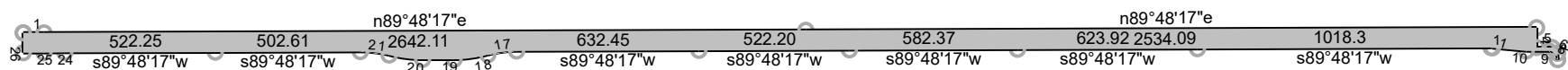


2/15/2023

Scale: 1 inch= 125 feet | File: E. 65th Ave. ROW.ndp

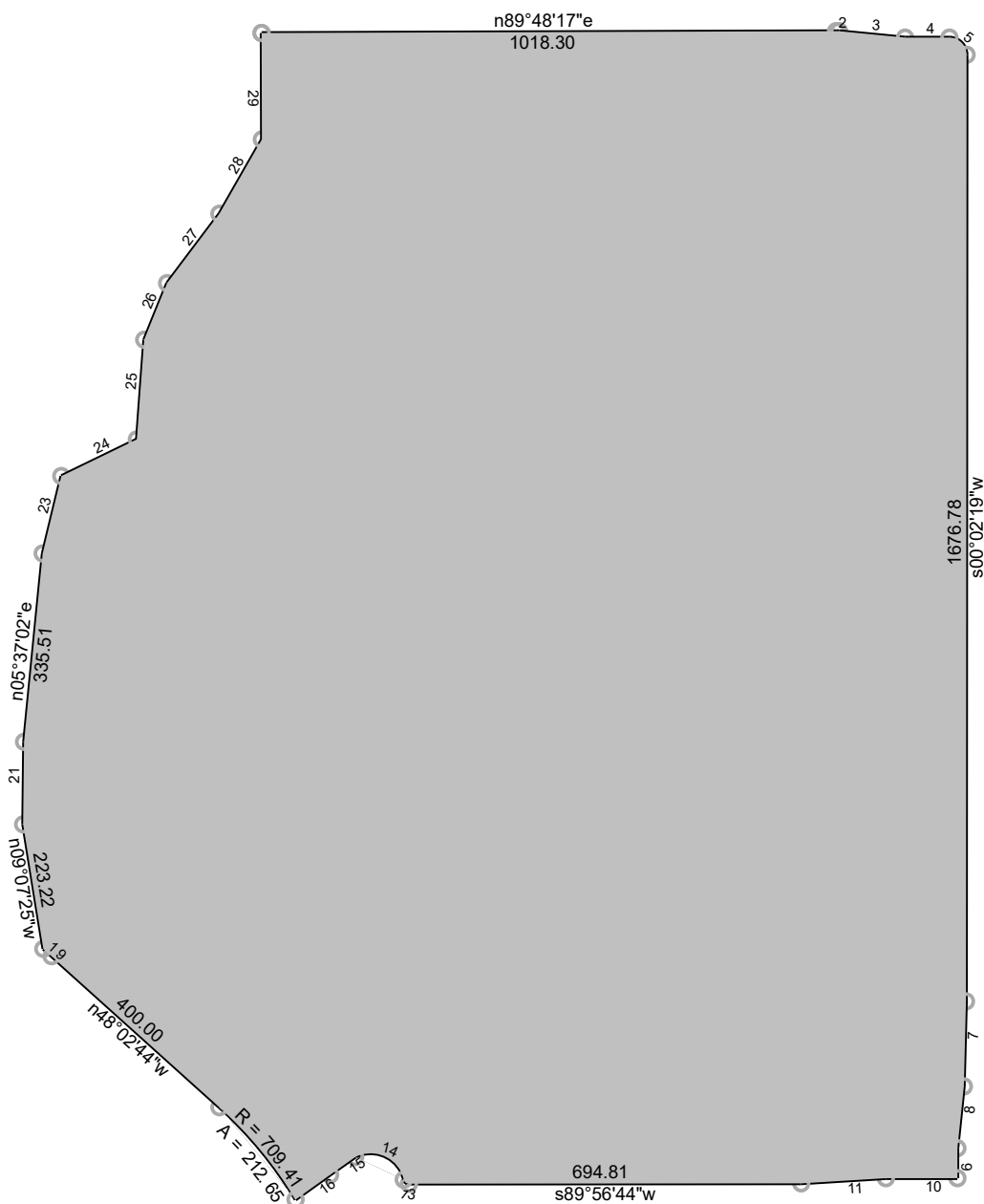
Tract 1: 1.8179 Acres (79187 Sq. Feet), Closure: s46.0205e 0.01 ft. (1/303767), Perimeter=2386 ft.

01 s89.5646w 1068.72	08 n89.5709e 127.07
02 Lt, r=784.41, delta=006.4800, arc=93.10, chord=n27.5505w 93.04	09 s00.2110e 75.37
03 n54.2726e 54.37	
04 Rt, r=60.50, delta=103.5712, arc=109.77, chord=s65.1439e 95.32	
05 Lt, r=9.50, delta=076.4713, arc=12.73, chord=s51.3939e 11.80	
06 n89.5644e 694.81	
07 n86.3308e 150.15	



2/15/2023

Tract 1: 8.5151 Acres (370919 Sq. Feet), Closure: s86.2904w 0.03 ft. (1/415911), Perimeter=10836 ft.



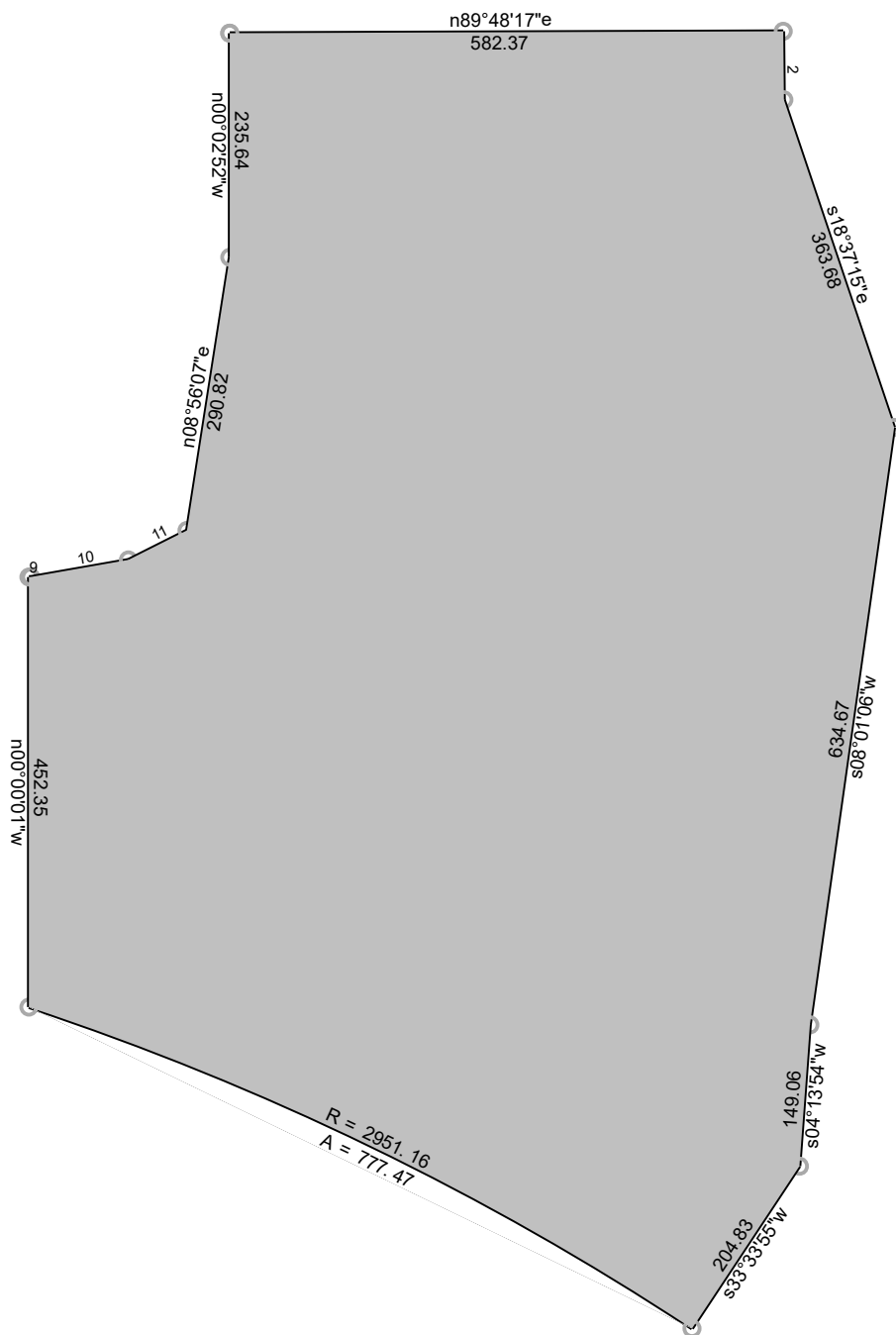
2/15/2023

Scale: 1 inch= 325 feet

File: Lot 1, Block 1.ndp

Tract 1: 69.6637 Acres, Closure: s75.2056e 0.01 ft. (1/521345), Perimeter=6889 ft.

01 n89.4817e 1018.30	18 n48.0244w 400.00
02 Rt, r=50.00, delta=005.4421, arc=5.01, chord=s87.1933e 5.01	19 Lt, r=2951.16, delta=000.2307, arc=19.84, chord=n48.1417w 19.84
03 s84.2722e 117.49	20 n09.0725w 223.22
04 n89.4817e 78.75	21 n00.3447e 146.38
05 Rt, r=30.50, delta=090.1402, arc=48.03, chord=s45.0442e 43.22	22 n05.3702e 335.51
06 s00.0219w 1676.78	23 n13.3017e 140.93
07 s01.2715w 150.63	24 n64.1032e 149.06
08 s06.0333w 110.13	25 n04.0804e 176.77
09 s00.2110e 53.31	26 n22.0101e 108.20
10 s89.5709w 127.07	27 n37.0541e 153.90
11 s86.3308w 150.15	28 n29.3935e 151.72
12 s89.5644w 694.81	29 n00.1143w 188.39
13 Rt, r=9.50, delta=076.4713, arc=12.73, chord=n51.3939w 11.80	
14 Lt, r=60.50, delta=103.5712, arc=109.77, chord=n65.1439w 95.32	
15 s54.2726w 54.37	
16 s54.2726w 75.22	
17 Lt, r=709.41, delta=017.1030, arc=212.65, chord=n39.2729w 211.86	



2/15/2023

Scale: 1 inch= 200 feet

File: Lot 2, Block 1.ndp

Tract 1: 20.7517 Acres, Closure: n00.0000e 0.00 ft. (1/999999), Perimeter=3938 ft.

01 n89.4817e 582.37

02 s00.3206e 72.02

03 s18.3715e 363.68

04 s08.0106w 634.67

05 s04.1354w 149.06

06 s33.3355w 204.83

07 Lt, r=2951.16, delta=015.0540, arc=777.47, chord=n64.0826w 775.23

08 n00.0001w 452.35

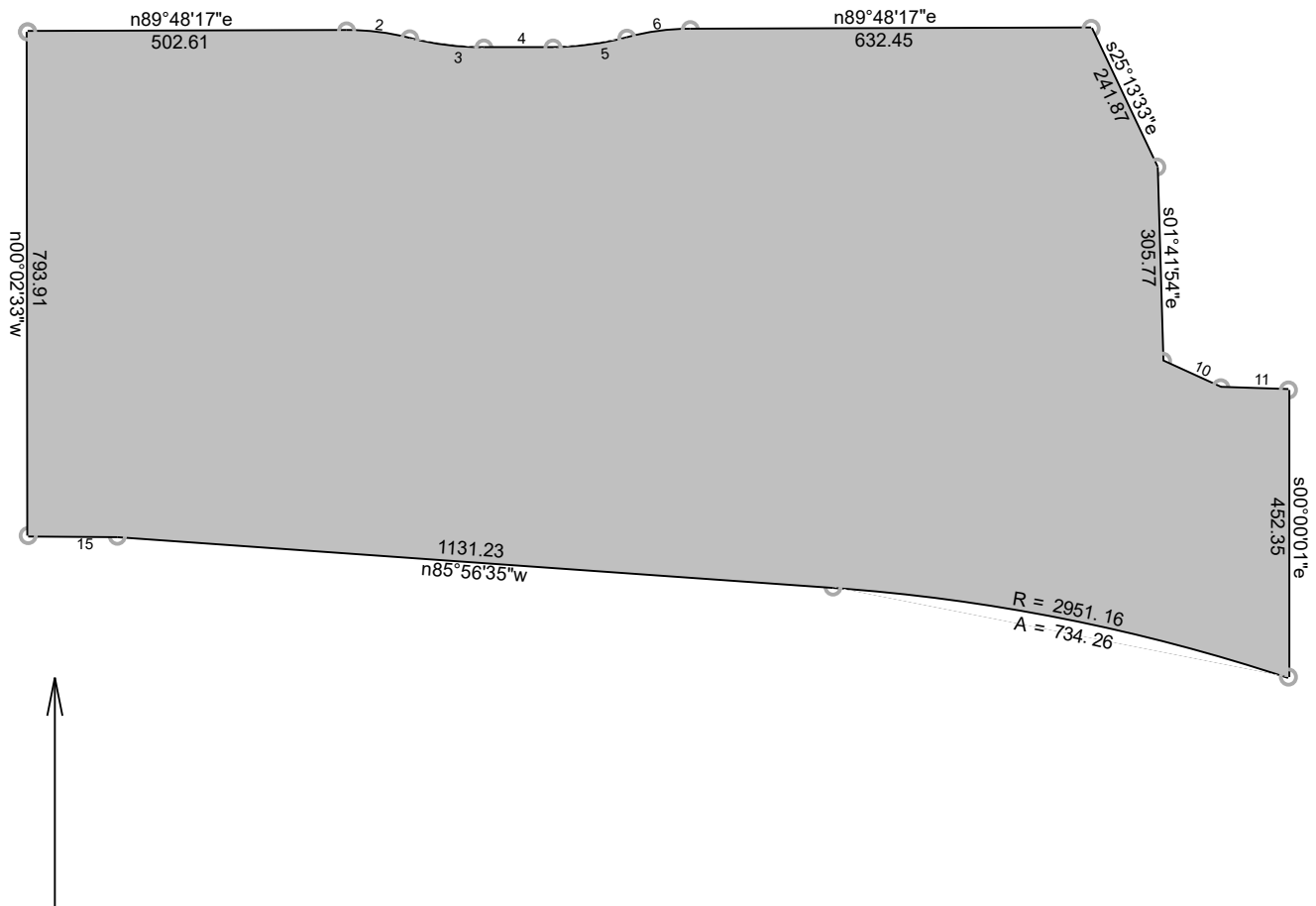
09 s88.0242e 2.04

10 n80.0301e 104.31

11 n63.0914e 68.89

12 n08.5607e 290.82

13 n00.0252w 235.64



2/15/2023

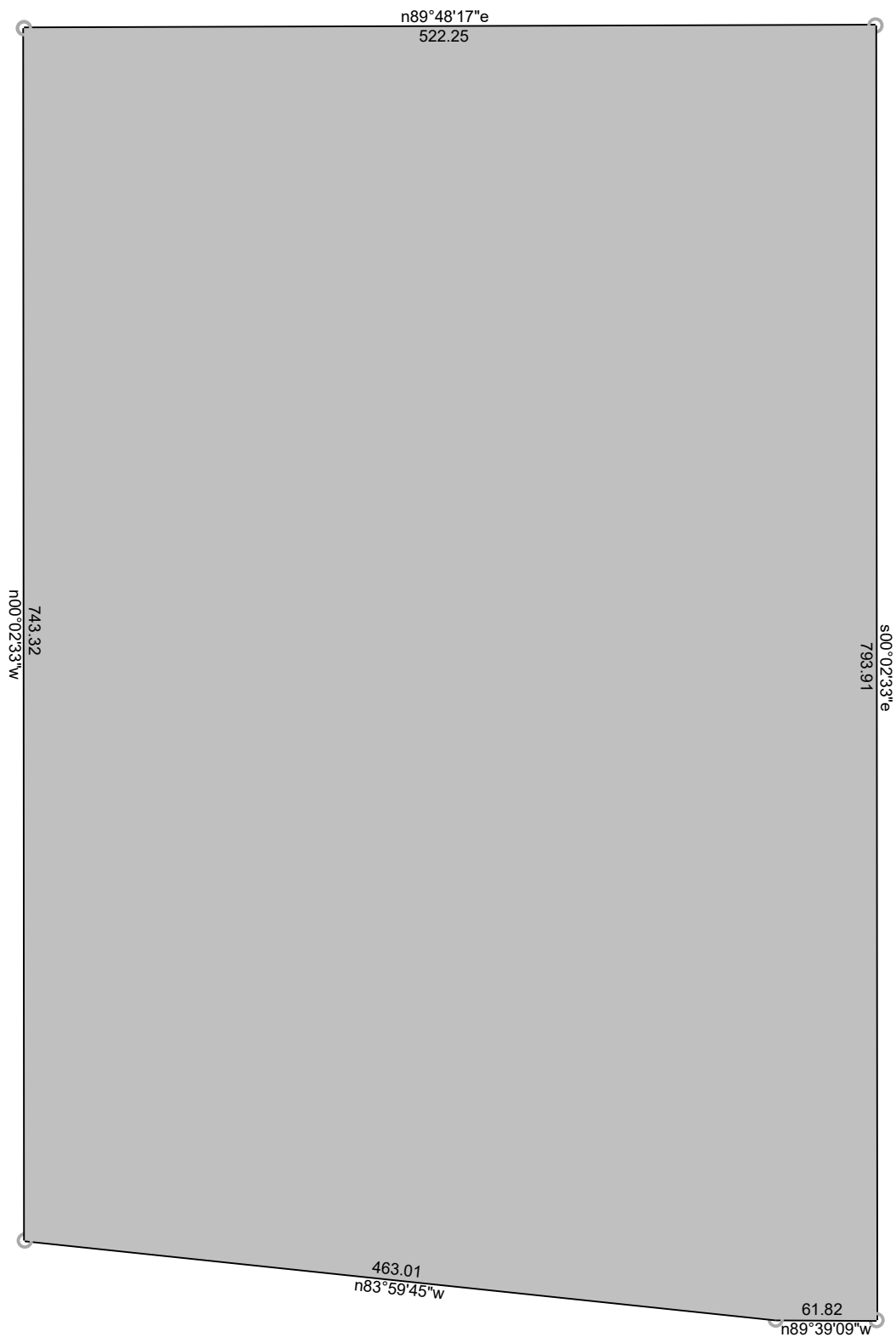
Scale: 1 inch= 300 feet

File: Lot 3, Block 1.ndp

Tract 1: 36.5922 Acres, Closure: s31.0318w 0.01 ft. (1/421163), Perimeter=5690 ft.

01 n89.4817e 502.61
 02 Rt, r=392.00, delta=014.4450, arc=100.90, chord=s82.4919e 100.62
 03 Lt, r=458.00, delta=014.4450, arc=117.88, chord=s82.4919e 117.56
 04 n89.4817e 109.22
 05 Lt, r=458.00, delta=014.4450, arc=117.88, chord=n82.2552e 117.56
 06 Rt, r=392.00, delta=014.4450, arc=100.90, chord=n82.2552e 100.62
 07 n89.4817e 632.45
 08 s25.1333e 241.87
 09 s01.4154e 305.77
 10 s65.2314e 101.13

11 s88.0242e 106.96
 12 s00.0001e 452.35
 13 Lt, r=2951.16, delta=014.1519, arc=734.26, chord=n78.4855w 732.36
 14 n85.5635w 1131.23
 15 n89.3909w 140.56
 16 n00.0233w 793.91



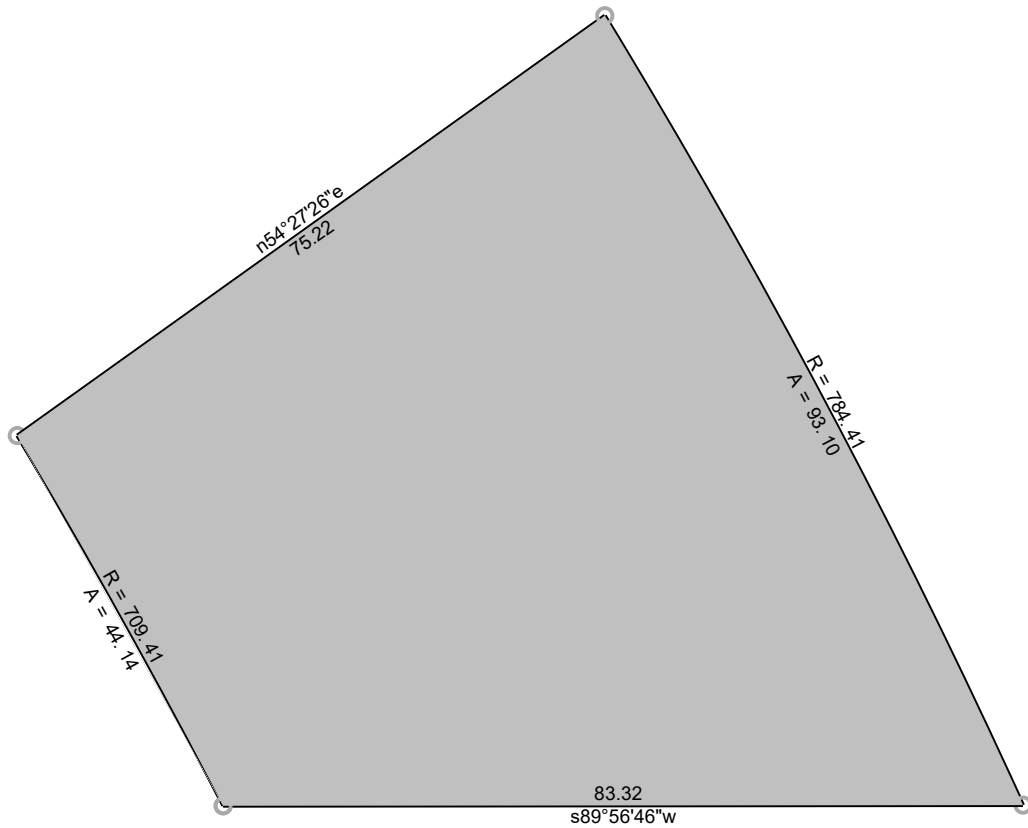
2/15/2023

Scale: 1 inch= 100 feet

File: Lot 4, Block 1.ndp

Tract 1: 9.2475 Acres (402820 Sq. Feet), Closure: n48.4417e 0.01 ft. (1/438212), Perimeter=2584 ft.

01 n89.4817e 522.25
02 s00.0233e 793.91
03 n89.3909w 61.82
04 n83.5945w 463.01
05 n00.0233w 743.32



2/15/2023

Scale: 1 inch= 20 feet

File: Lot 5, Block 1.ndp

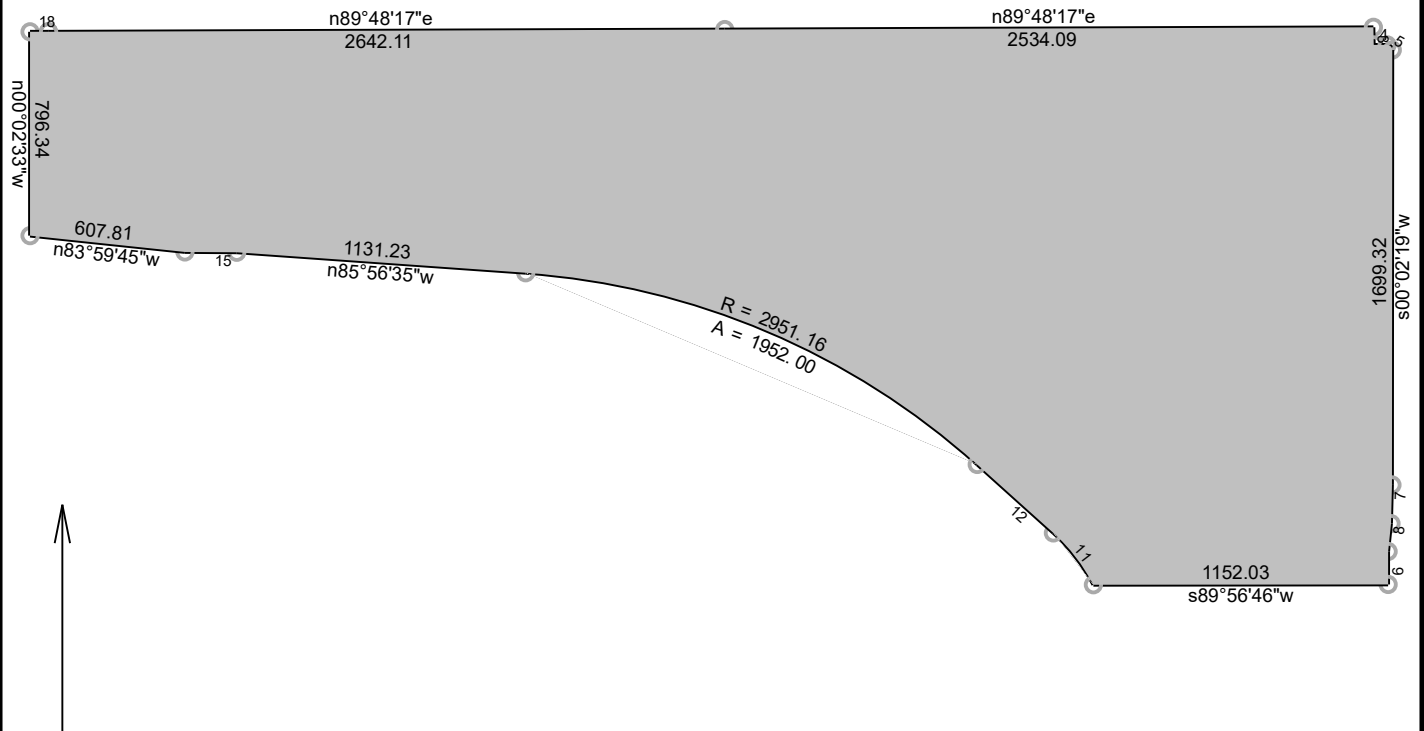
Tract 1: 0.1183 Acres (5151 Sq. Feet), Closure: n78.4432e 0.01 ft. (1/48283), Perimeter=296 ft.

01 Lt, r=709.41, delta=003.3353, arc=44.14, chord=n29.0517w 44.13

02 n54.2726e 75.22

03 Rt, r=784.41, delta=006.4800, arc=93.10, chord=s27.5505e 93.04

04 s89.5646w 83.32



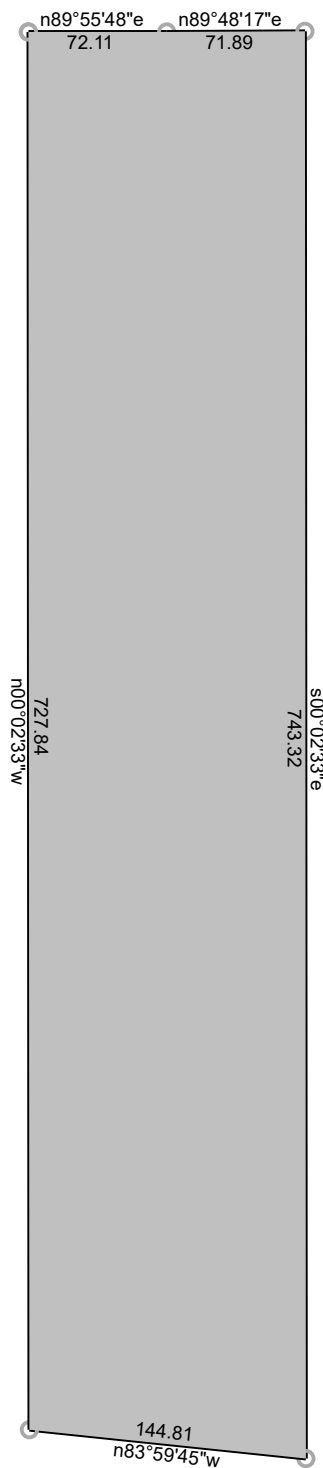
10/12/2022

Scale: 1 inch= 750 feet

File: Overall Legal.ndp

Tract 1: 165.9483 Acres, Closure: n53.0226w 0.01 ft. (1/999999), Perimeter=13989 ft.

01 n89.4817e 2642.11	12 n48.0244w 400.00
02 n89.4817e 2534.09	13 Lt, r=2951.16, delta=037.5351, arc=1952.00, chord=n66.5940w 1916.61
03 s00.1143e 68.50	14 n85.5635w 1131.23
04 n89.4817e 52.95	15 n89.3909w 202.38
05 Rt, r=20.00, delta=090.1404, arc=31.50, chord=s45.0442e 28.34	16 n83.5945w 607.81
06 s00.0219w 1699.32	17 n00.0233w 796.34
07 s01.2715w 150.63	18 n89.5548e 72.00
08 s06.0333w 110.13	
09 s00.2110e 128.69	
10 s89.5646w 1152.03	
11 Lt, r=709.41, delta=020.4423, arc=256.79, chord=n37.4032w 255.39	



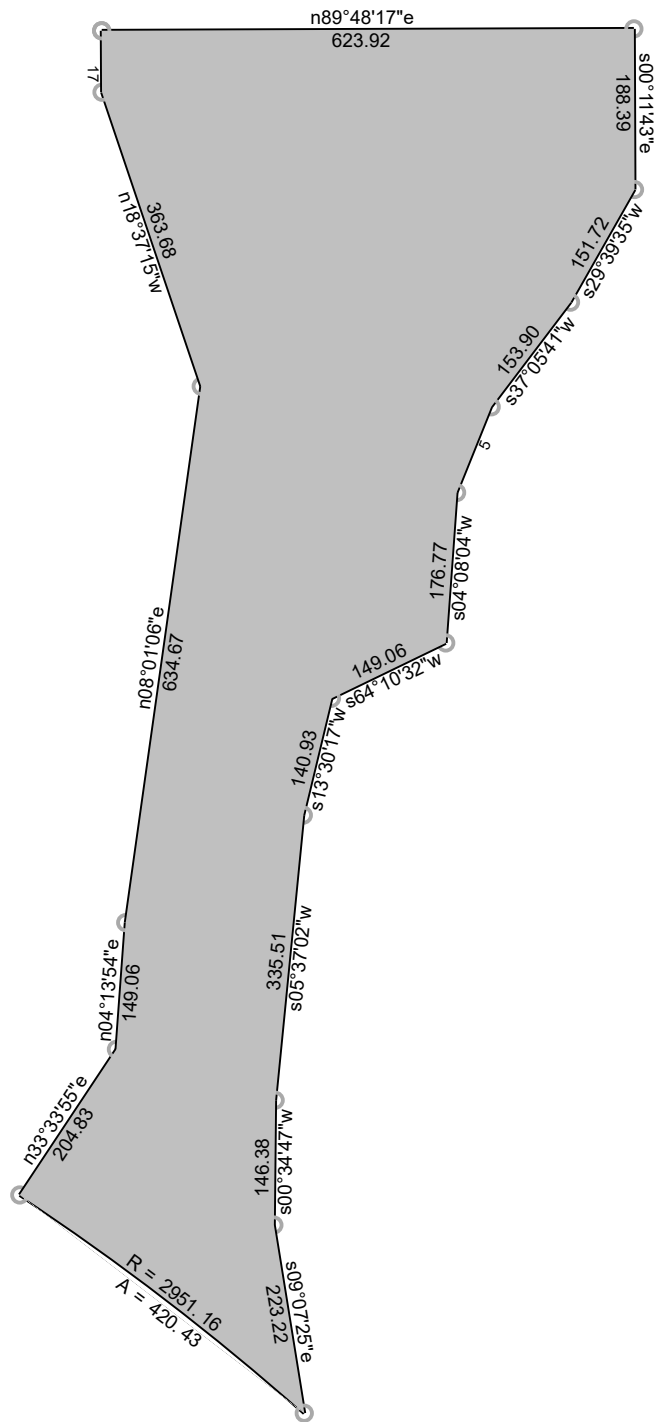
2/15/2023

Scale: 1 inch= 100 feet

File: Piccadilly Rd. ROW.ndp

Tract 1: 2.4316 Acres (105919 Sq. Feet), Closure: n00.0000e 0.00 ft. (1/381071), Perimeter=1760 ft.

01 n89.5548e 72.11
02 n89.4817e 71.89
03 s00.0233e 743.32
04 n83.5945w 144.81
05 n00.0233w 727.84



2/15/2023

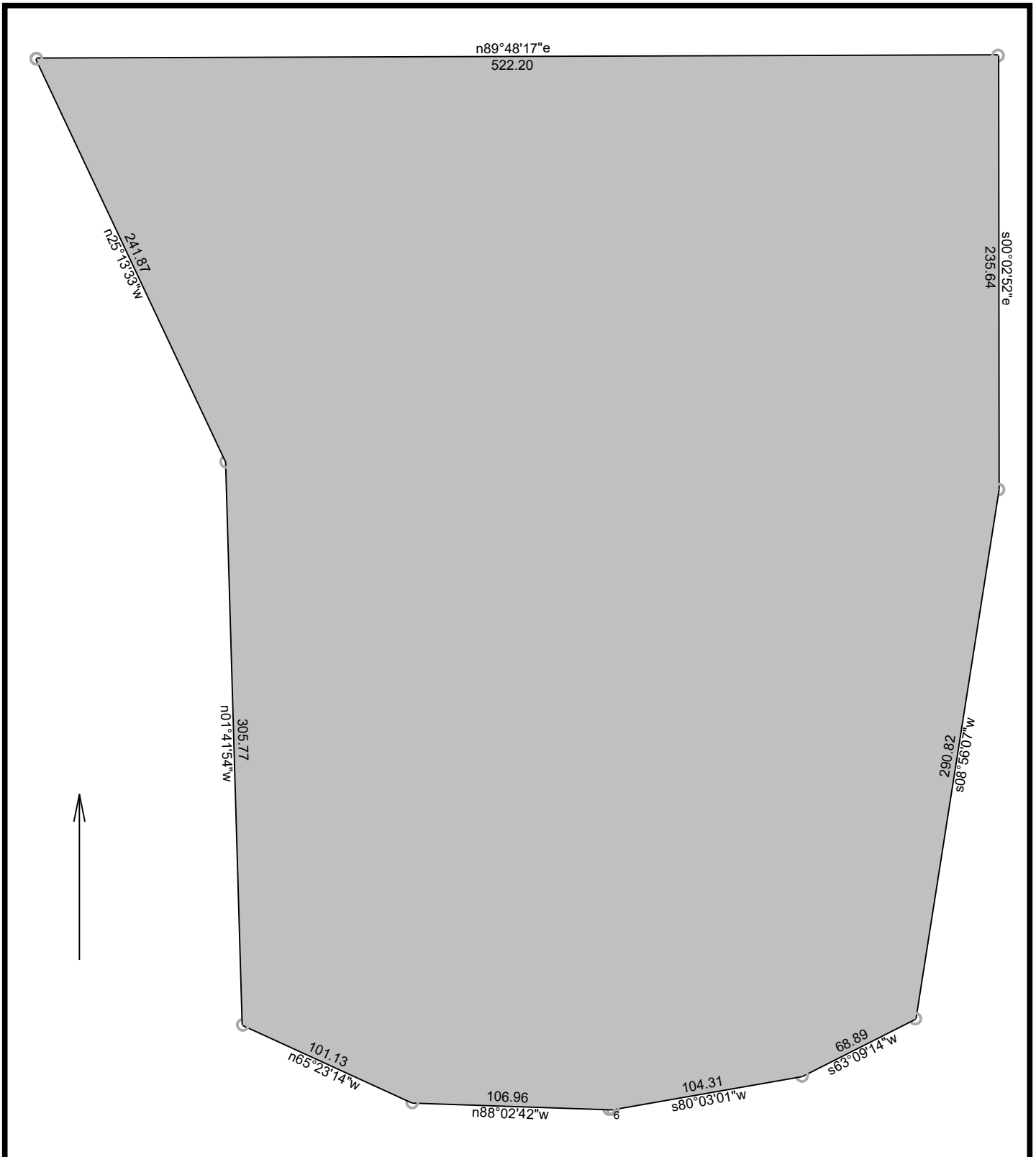
Scale: 1 inch= 225 feet

File: Tract A.ndp

Tract 1: 11.4178 Acres, Closure: n00.0000e 0.00 ft. (1/976670), Perimeter=4243 ft.

01 n89.4817e 623.92
02 s00.1143e 188.39
03 s29.3935w 151.72
04 s37.0541w 153.90
05 s22.0101w 108.20
06 s04.0804w 176.77
07 s64.1032w 149.06
08 s13.3017w 140.93
09 s05.3702w 335.51
10 s00.3447w 146.38
11 s09.0725e 223.22

12 Lt, r=2951.16, delta=008.0945, arc=420.43, chord=n52.3043w 420.07
13 n33.3355e 204.83
14 n04.1354e 149.06
15 n08.0106e 634.67
16 n18.3715w 363.68
17 n00.3206w 72.02



2/15/2023

Scale: 1 inch= 75 feet

File: Tract B.ndp

Tract 1: 5.3918 Acres (234868 Sq. Feet), Closure: n34.3559e 0.01 ft. (1/227061), Perimeter=1980 ft.

01 n89.4817e 522.20
02 s00.0252e 235.64
03 s08.5607w 290.82
04 s63.0914w 68.89
05 s80.0301w 104.31
06 n88.0242w 2.04
07 n88.0242w 106.96

08 n65.2314w 101.13
09 n01.4154w 305.77
10 n25.1333w 241.87