

LANDSCAPE DESIGN STANDARDS MATRIX

Landscape Item	Brief Description of the Feature	Location of the Standards in the Applications Package
1. Overall landscape concept and palette of plant materials used to carry it out	The overall landscape character for this commercial development will fit within the surrounding rolling prairie landscape with the use of a native plant palette. Generally, landscape will be used to screen or soften views of commercial activity within sight of adjacent land uses.	Reference TAB 11.2
2. Landscape design at entry monumentation and key entry points	The primary entry point will be at the intersection of Powhatan Rd & Colfax Avenue. Landscape in this area will use native colors to accent the entry monumentation. These plantings will help frame monument areas as an arrival point for pedestrian and vehicle traffic with the use of trees in the background, accent shrubs to highlight, and short grasses / perennial mixes in the foreground to frame the monument.	Reference TAB 10.8
3. Landscape standards along E-470 or I-70	N/A	
4. Landscape standards along arterial and collector roads	Landscape along arterial and collector roads, namely Powhatan Rd and Colfax Ave, will provide buffering for the interior of the site through the use of street trees and shrub beds, while providing year round interest to both pedestrian and vehicle traffic. This design will be dependent on a creative use of horizontal and vertical layering of landscape and will cluster planting beds to break up uniform views along the corridor as well as highlight commercial architecture and buffer parking.	Reference TAB 12.2
5. Landscape standards along local roadways	The landscape along local roadways, in this case referring the boundary road, will consist mainly of street trees and tree lawn. Street trees will have a significant visual impact on this commercial development. Not only do they provide a pleasing pedestrian scaled environment and frame the interior of the property, but they provide wildlife habitat and reduce air pollution.	Reference TAB 11.3
6. Landscape standards in commercial and public gathering areas	Landscape within these areas will work in conjunction the commercial look of the architecture and hardscape theme. These landscape plantings will help soften some of the hard rectilinear edges of the architecture and all parking shall be screened per the COA landscape requirements.	Reference TAB 10.9
7. Landscape standards at detention / retention ponds and water features	Landscape within detention areas will propose natural pockets of plantings and trees to help soften views and use species of native plants that work well in drainage areas such as Cottonwoods and Sandbar Willows.	
8. Landscape buffers at parks, open space and drainage	Landscape design of landscape buffers at open space and drainages will meet COA landscape requirements through the use of native species. Specifically, a landscape berm with a minimum 4ft height will be constructed along the southeast edge of the site with pockets of evergreen and deciduous trees to screen views of self storage facilities from the adjacent Sky Ranch Subdivision. This berm will be covered with a native seed mix to match the surrounding prairie landscape. The trees species within this buffer shall be 75% evergreen. Per the UDO, the other following buffers shall be used: - 25 ft landscape buffer between Jamaso and adjacent residential property lines. - 20 ft landscape buffer between commercial uses and adjacent R.O.W. - 10 ft landscape buffer between Jamaso and adjacent non-residential property lines.	Reference TAB 11.4
9. Landscape integration at retaining walls	While we do not anticipate a significant amount of walls within this commercial property due to its very gently sloped terrain, we understand that there may be instances where they are required. The landscape will be used to soften the uniformity of any such as by screening with the same overall contemporary landscape theme we have envisioned.	

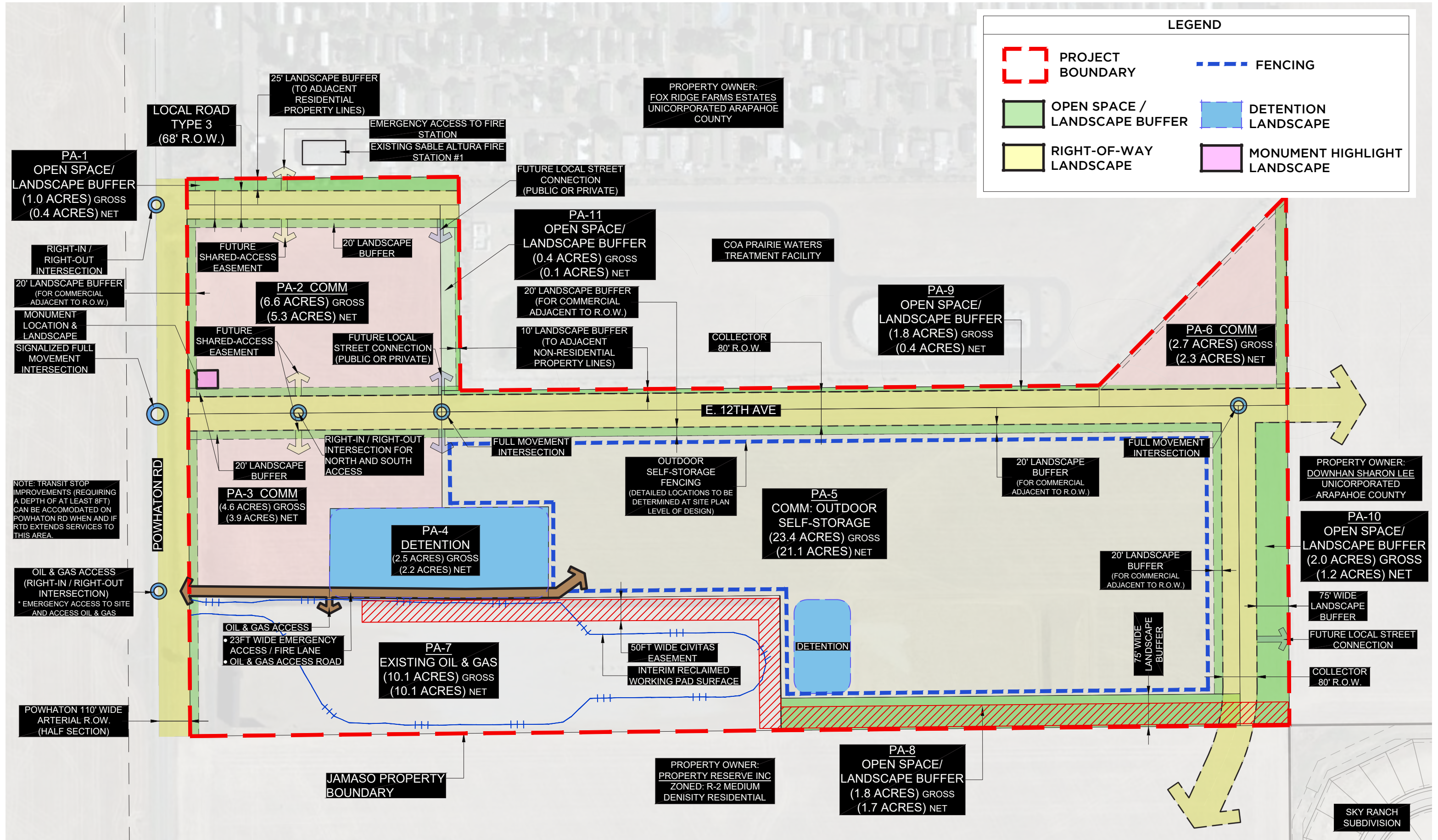
The design standards listed in this matrix implement the design themes of the Master Plan and are intended to complement and exceed the Unified Development Ordinance (UDO) standards. Unless an adjustment has been specifically requested and granted, if a conflict should exist between any specific provisions of this matrix and any other ordinance standards, the more restrictive standards shall govern.

All the photos and illustrations referenced by this matrix are representative of the level of design quality required by this Master Plan. Final designs to be submitted at the Site Plan level will not necessarily duplicate the exact illustrations, but will contain the same themes and dimensions as shown, and will be at the same or higher level of design quality, extent, and detail.

*All landscape requirements listed in the City of Aurora's current landscape ordinance shall be met or exceeded.

** All commercial development shall conform to the UDO at the time a site plan is submitted for individual pad sites.

JAMASO LANDSCAPE OVERVIEW PLAN



COMMERCIAL BUILDING PERIMETER**LANDSCAPING:**

Building Perimeter Landscaping: All building elevations facing public streets, transportation corridors, public open space, residential neighborhoods, or whenever an entrance door is present, shall be landscaped with a variety of plant materials to ensure seasonal interest.

Amount: Perimeter plantings shall consist of one tree or one tree equivalent per 35 linear feet of elevation length.

Location: Plantings shall be arranged to screen utility hardware and mechanical equipment, define entrances, and soften featureless walls. Trees shall be located at building corners, primary entrances, and along expanses of featureless walls.

PARKING LOT LANDSCAPING - EXTERIOR :

All parking lots shall be screened pursuant to the following landscape standards:

- All parking lots shall be screened from public rights-of-way, public open space, and adjacent property. Parking lot screening shall be integrated into adjacent street buffers and street frontages, but shall not block sight triangles at intersections and parking lot entrances.
- Type: Screening shall consist of a berm between 30 and 36 inches in height with a maximum slope of 4:1. Berm shall be planted with a combination of evergreen and deciduous trees, evergreen and deciduous shrubs, perennials and ornamental grasses. If landscaped berms are not practical, one of the following options shall provide equivalent screening:
 1. A low landscape 'hedge' between 30 and 36 inches in height at maturity consisting of a double row of plant material planted a maximum of three feet on center in a triangular pattern. Planting should be a mix of species in overlapping massings to provide a more natural character fitting of JAMASO
 2. A decorative wall between 30 and 36 inches in height in combination with landscaping.
- Plant Materials: Plant material may consist of evergreen and deciduous shrubs, perennials and ornamental grasses. Shrub species shall

reach a minimum height of 36 inches at maturity with at least 50 percent of the species being deciduous flowering species.

- Accent Plantings: Large shade and evergreen tree species and/ or small tree or large shrub species shall be used as accents throughout the screen plantings.

PARKING LOT LANDSCAPING - INTERIOR :

All parking lots shall meet the following landscape standards:

Islands: Each landscape island shall consist of:

Single Islands (9'x19')

- One shade tree or ornamental tree (as accents only, not the primary tree)
- Understory treatments to be living plant materials consisting of six (6) shrubs or equivalent perennials, ornamental grasses (no more than 30%), and/or groundcovers. Plant materials must not exceed 26" in height at maturity. Areas may be mulched with organic or inorganic mulches.

Double Islands (9'x38')

- Two shade trees or ornamental trees (as accents only, not the primary tree)
- Understory treatments to be living plant materials consisting of Twelve (12) shrubs or equivalent perennials, ornamental grasses (no more than 30%), and/or groundcovers. Plant materials must not exceed 26" in height at maturity. Areas may be mulched with organic or inorganic mulches.

Medians: Landscaped medians shall consist of:

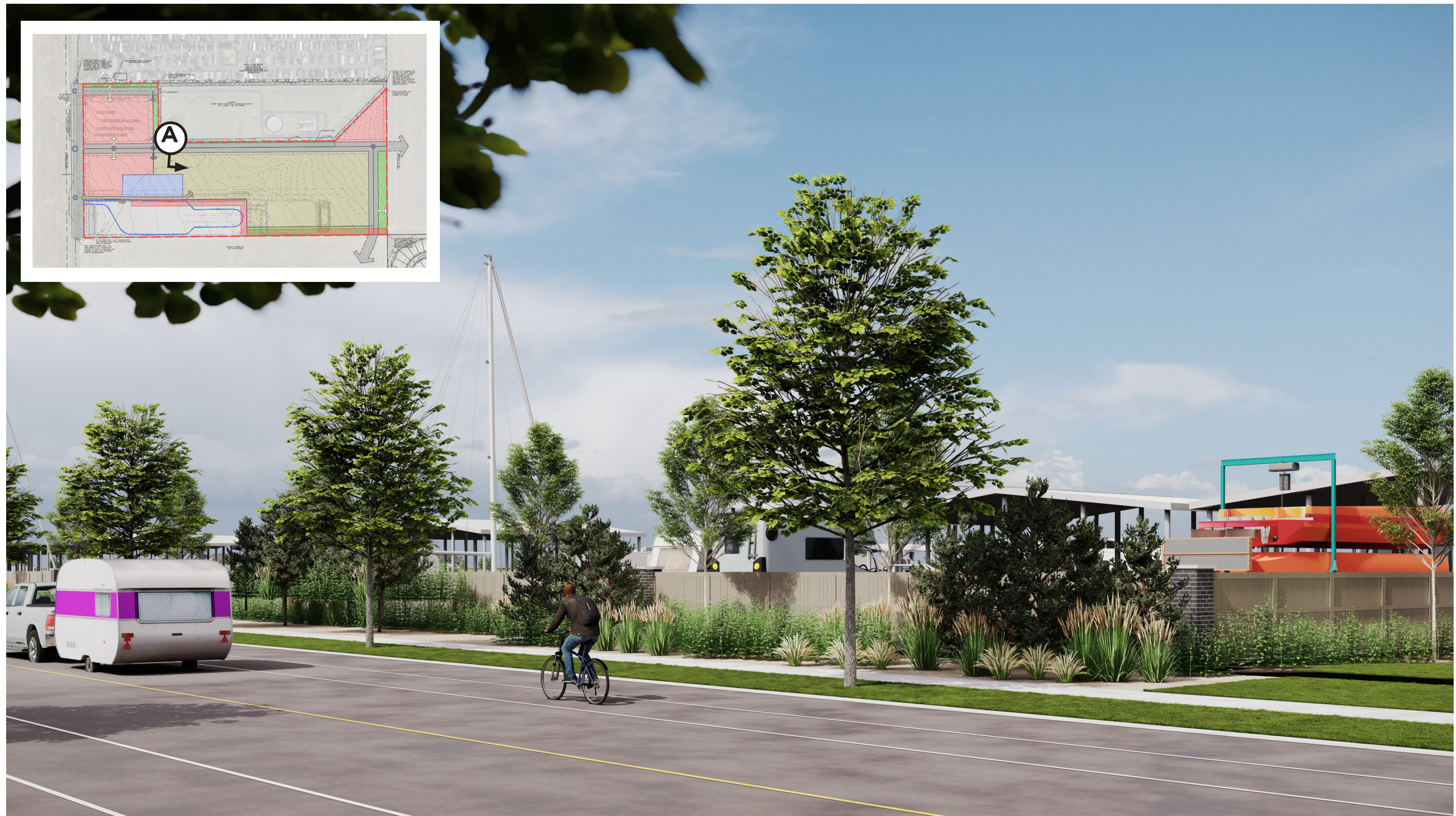
1. One shade or ornamental tree for each 30 linear feet of median length.
2. One or more understory treatments providing 100 percent surface coverage, which may include:
 - Living plant materials consisting of shrubs at a ratio of six shrubs per 36 linear feet. Perennials, ornamental grasses, and/or groundcovers, may be used at defined shrub equivalent values. Areas may be mulched with organic or inorganic mulches.
 - Decorative concrete
 - Decorative paving; including stone or concrete pavers

Irrigation: Landscaping in islands and medians that are less than 12 feet in width shall be irrigated by an underground drip system.

ENTRY MONUMENTATION LANDSCAPE



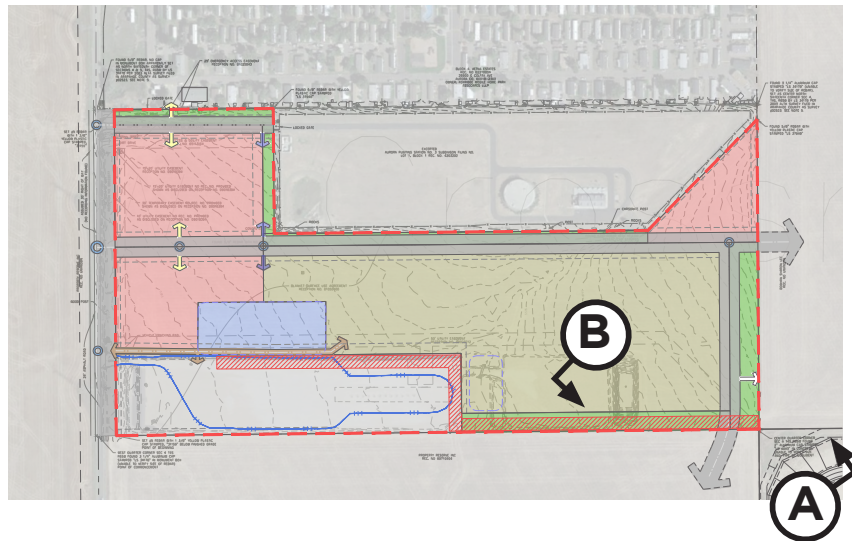
E. 12th AVENUE RIGHT-OF-WAY LANDSCAPE



VIEW A: VIEW OF JAMASO PROPERTY LANDSCAPE BUFFER FROM SKY RANCH SUBDIVISION



VIEW B: VIEW OF JAMASO PROPERTY LANDSCAPE BUFFER FROM WITHIN OUTDOOR SELF STORAGE AREA



LANDSCAPE PLANT LIST

PLANT LIST					
DECIDUOUS TREES					
Botanical Name	Common Name	Height X Spread	Spacing	Min. Size	Notes
Acer platanoides ‘Royal Red’	Royal Red Maple	30-40’ x 40-50’	NA	2.5” Caliper	Restricted to The Gardens and Parkside Neighborhoods
Acer freemanii ‘Autumn Blaze’	Autumn Blaze Maple	40-50’ x 30-40	NA	2.5” Caliper	Restricted to The Gardens and Parkside Neighborhoods
Aesculus x camea ‘Ft. McNair’	Red Horsechestnut	40-50’ x 20-30’	NA	2.5” Caliper	City of Aurora recommended xeriscape plant
Catalpa speciosa	Western Catalpa	40-60’ x 30-50’	NA	2.5” Caliper	City of Aurora recommended xeriscape plant
Celtis occidentalis	Western Hackberry	50-60’ x 40-50’	NA	2.5” Caliper	City of Aurora recommended xeriscape plant
Gleditsia triacanthos inemis ‘Shademaster’ TM	Shademaster Honeylocust	40-50’ x 30-35’	NA	2.5” Caliper	City of Aurora recommended xeriscape plant
Gleditsia triacanthos ‘Imperial’	Imperial Honeylocust	30-35’ x 30-35’	NA	2.5” Caliper	City of Aurora recommended xeriscape plant
Gleditsia triacanthos ‘Skyline’	Skyline Honeylocust	40-50’ x 30-35’	NA	2.5” Caliper	City of Aurora recommended xeriscape plant
Gymnocladus dioica	Kentucky Coffeetree	50-60’ x 40-50’	NA	2.5” Caliper	City of Aurora recommended xeriscape plant
Pyrus calleryana ‘Chanticleer’	Chanticleer Pear	20-30’ x 15-20’	NA	2.5” Caliper	City of Aurora recommended xeriscape plant
Quercus bicolor	Swamp White Oak	40-60’ x 40-60’	NA	2.5” Caliper	City of Aurora recommended xeriscape plant
Quercus ‘Crimson Spire’	Crimson Spire Oak	40-60’ x 15-20’	NA	2.5” Caliper	City of Aurora recommended xeriscape plant
Quercus macrocarpa	Bur Oak	50-80’ x 50-80’	NA	2.5” Caliper	City of Aurora recommended xeriscape plant
Quercus robur	English Oak	40-60’ x 40-60’	NA	2.5” Caliper	City of Aurora recommended xeriscape plant
Quercus robur ‘Fastigiata’	Columnar English Oak	40-60’ x 15-20’	NA	2.5” Caliper	City of Aurora recommended xeriscape plant
Quercus robur x bicolor ‘Long’	Regal Prince Oak	40-45’ x 15-20’	NA	2.5” Caliper	City of Aurora recommended xeriscape plant
Quercus rubra	Northern Red Oak	40-60’ x 40-60’	NA	2.5” Caliper	City of Aurora recommended xeriscape plant
Salix alba ‘Vitellina’	Golden Willow	40-50’ x 30-40’	NA	2.5” Caliper	Restricted to The Lakes Neighborhood and drainage corridors
Tilia americana ‘Redmond’	Redmond American Linden	40-50’ x 30-40’	NA	2.5” Caliper	Xeric-rated plant from the Garden Centers of Colorado
Tilia cordata ‘Greenspire’	Greenspire Littleleaf Linden	30-40’ x 25-35’	NA	2.5” Caliper	Xeric-rated plant from the Garden Centers of Colorado
Tilia tomentosa	Silver Linden	40-50’ x 30-40’	NA	2.5” Caliper	Xeric-rated plant from the Garden Centers of Colorado

ORNAMENTAL TREES					
Botanical Name	Common Name	Height X Spread	Spacing	Min. Size	Notes
Acer ginnala	Amur Maple	15-20’ x 15-20’	NA	2” Caliper	City of Aurora recommended xeriscape plant
Acer tataricum	Tatarian Maple	20-25’ x 15-20’	NA	6’-8’ Clump	City of Aurora recommended xeriscape plant
Amelanchier canadensis	Shadblow Serviceberry	15-25’ x 15-20’	NA	6’-8’ Clump	City of Aurora recommended xeriscape plant
Amelanchier x grand. ‘Autumn Brilliance’	Autumn Brilliance Serviceberry	15-25’ x 15-20’	NA	6’-8’ Clump	City of Aurora recommended xeriscape plant
Cercis canadensis	Eastern Redbud	15-20’ x 15-20’	NA	6’-8’ Clump	City of Aurora recommended xeriscape plant
Crataegus sp.	Hawthorn	15-30’ x 15-30’	NA	6’-8’ Clump	City of Aurora recommended xeriscape plant
Koelreuteria paniculata	Golden Rain Tree	20-30’ x 20-30’	NA	2” Caliper	City of Aurora recommended xeriscape plant
Malus sp.	Crabapple	15-25’ x 15-25’	NA	2” Caliper	City of Aurora recommended xeriscape plant
Prunus cerasifera ‘Newport’	Newport Flowering Plum	15-20’ x 15-20’	NA	2” Caliper	City of Aurora recommended xeriscape plant
Prunus maackii	Amur Chokecherry	20-30’ x 20-25’	NA	2” Caliper	City of Aurora recommended xeriscape plant
Prunus padus	Mayday Tree	20-30’ x 20-30’	NA	6’-8’ Clump	City of Aurora recommended xeriscape plant
Prunus subhirtella ‘Pendula’	Weeping Cherry	20-30’ x 15-20’	NA	6’-8’ Clump	City of Aurora recommended xeriscape plant
Prunus virginiana ‘Shubert’	Shubert Chokecherry	20-30’ x 15-20’	NA	2” Caliper	City of Aurora recommended xeriscape plant
Prunus avium ‘Stella’	Compact Stella Cherry	10’ x 8’	NA	2” Caliper	City of Aurora recommended xeriscape plant
Prunus avium ‘Lapins’	Lapins Cherry	15’ x 10’	NA	2” Caliper	City of Aurora recommended xeriscape plant
Prunus cerasus ‘Montmorency’	Montmorency Sour Pie Cherry	15’ x 10’	NA	2” Caliper	City of Aurora recommended xeriscape plant
Prunus domestica ‘Italian’	Italian Plum	15’ x 15’	NA	2” Caliper	City of Aurora recommended xeriscape plant
Prunus domestica ‘Stanley’	Stanley Plum	15’ x 12’	NA	2” Caliper	City of Aurora recommended xeriscape plant
Prunus ‘Mount Royal’	Mount Royal Plum	15’ x 10’	NA	2” Caliper	City of Aurora recommended xeriscape plant
Prunus persica ‘Elberta’	Elberta Peach	15’ x 12’	NA	2” Caliper	City of Aurora recommended xeriscape plant

LANDSCAPE PLANT LIST - Cont'd.

Prunus persica 'Polly'	Polly Peach	12' x 10'	NA	2" Caliper	City of Aurora recommended xeriscape plant
Prunus persica 'Reliance'	Reliance Peach	15' x 12'	NA	2" Caliper	City of Aurora recommended xeriscape plant
Prunus 'Superior'	Superior Plum	15' x 10'	NA	2" Caliper	City of Aurora recommended xeriscape plant
Pyrus calleryana 'Cleveland Select'	Cleveland Select Pear	25-30' x 12-15'	NA	2" Caliper	City of Aurora recommended xeriscape plant
Pyrus x 'Summercrisp'	Summercrisp Pear	15' x 15'	NA	2" Caliper	City of Aurora recommended xeriscape plant
Syringa reticulata	Japanese Tree Lilac	15-25' x 15-20'	NA	6'-8' Clump	City of Aurora recommended xeriscape plant

EVERGREEN TREES					
Botanical Name	Common Name	Height X Spread	Spacing	Min. Size	Notes
Juniperus chinensis 'Spartan'	Spartan Juniper	15-20' x 4-6'	NA	6'	City of Aurora recommended xeriscape plant
Juniperus scopulorum 'Medora'	Medora Juniper	15-20' x 3-5'	NA	6'	City of Aurora recommended xeriscape plant
Juniperus scopulorum 'Skyrocket'	Skyrocket Juniper	15-20' x 2-3'	NA	6'	City of Aurora recommended xeriscape plant
Picea abies 'Cupressina'	Fastigate Norway Spruce	15-20' x 2-3'	NA	6'	Restricted to The Lakes Neighborhood
Pinus aristata	Bristlecone Pine	20-40- x irregular	NA	6'	City of Aurora recommended xeriscape plant
Pinus cembra 'Swiss Stone'	Swiss Stone Pine	20-25' x 10-12'	NA	6'	City of Aurora recommended xeriscape plant
Pinus densiflora 'Umbraculifera'	Tanyosho Pine	6-10' x 6-10'	NA	6'	City of Aurora recommended xeriscape plant
Pinus edulis	Pinyon Pine	20-30' x 10-20'	NA	6'	City of Aurora recommended xeriscape plant
Pinus flexilis 'Vanderwolf's Pyramidal'	Vanderwolf's Pyramidal Pine	20-30' x 10-15'	NA	6'	City of Aurora recommended xeriscape plant
Pinus heldreichii var. Leucodermis	Bosnian Pine	15-20' x 8-12'	NA	6'	City of Aurora recommended xeriscape plant
Pinus nigra	Austrian Pine	40-60', x 20-40'	NA	6'	City of Aurora recommended xeriscape plant
Pinus nigra 'Arnold Sentinel'	Columnar Austrian Pine	20-25' x 5-7'	NA	6'	City of Aurora recommended xeriscape plant
Pinus ponderosa	Ponderosa Pine	60-80' x 25-30'	NA	8'	City of Aurora recommended xeriscape plant
Pinus strobiformis	Southwestern White Pine	40-50' x 20-30'	NA	8'	City of Aurora recommended xeriscape plant
Pinus sylvestris	Scotch Pine	30-50' x 20-30'	NA	8'	City of Aurora recommended xeriscape plant
Pseudotsuga menziesii	Douglas Fir	50-80' x 15-25'	NA	8'	City of Aurora recommended xeriscape plant

EVERGREEN AND BROADLEAF EVERGREEN SHRUBS					
Botanical Name	Common Name	Height X Spread	Spacing	Min. Size	Notes
Buxus species	Boxwood	varies	+/-3'o.c.	5 gallon	Restricted to The Gardens Neighborhood
Cytisus Dallimorei 'Lena'	Lena Broom	3' x 4'	3'o.c.	5 gallon	City of Aurora recommended xeriscape plant
Euonymus fortunei 'Coloratus'	Purpleleaf Winter Creeper	18-24" x 3-4'	3'o.c.	5 gallon	City of Aurora recommended xeriscape plant
Euonymus fortunei 'Emerald Gaiety'	Emerald Gaiety Euonymus	3' x 5'	4'o.c.	5 gallon	City of Aurora recommended xeriscape plant
Euonymus kiautschovica 'Manhattan'	Manhattan Euonymus	4-6' x 6-8'	4'o.c.	5 gallon	City of Aurora recommended xeriscape plant
Juniperus sp.	Spreading Juniper	8"-3' x 6-10'	+/-4'o.c.	5 gallon	City of Aurora recommended xeriscape plant
Mahonia aquifolium	Oregon Grape Holly	4-6' x 4-6'	4'o.c.	5 gallon	Xeric-rated plant from the Garden Centers of Colorado
Mahonia aquifolium 'Compacta'	Compact Oregan Grape Holly	3' x 3'	3'o.c.	5 gallon	Xeric-rated plant from the Garden Centers of Colorado
Pinus mugo 'Mops'	Miniature Mugo Pine	2-3' x 2-3'	3'o.c.	5 gallon	City of Aurora recommended xeriscape plant
Pinus sylvestris 'Hillside Creeper'	Hillside Creeper	3' x 8'	6'o.c.	5 gallon	City of Aurora recommended xeriscape plant
Pyracantha angustifolia 'Gnozam'	Gnome Pyracantha	6' x 6'	6'o.c.	5 gallon	Xeric-rated plant from the Garden Centers of Colorado

SHRUBS - LARGE (over 6' high)					
Botanical Name	Common Name	Height X Spread	Spacing	Min. Size	Notes
Acer glabrum	Rocky Mountain Maple	10-20' x 10-15'	10'o.c.	5 gallon	Xeric-rated plant from the Garden Centers of Colorado
Amelanchier utahensis	Utah Serviceberry	6-12' x 6-12'	6'o.c.	5 gallon	City of Aurora recommended xeriscape plant
Amelanchier alnifolia	Saskatoon Serviceberry	10' x 8'	8'o.c.	5 gallon	City of Aurora recommended xeriscape plant
Aronia arbutifolia 'Brilliantissima'	Brilliant Red Chokecherry	6-8' x 4-6'	4'o.c.	5 gallon	City of Aurora recommended xeriscape plant
Aronia melanocarpa	Black Chokeberry	6-8' x 4-6"	4'o.c.	5 gallon	City of Aurora recommended xeriscape plant

LANDSCAPE PLANT LIST - Cont'd.

Betula fontinalis	Native River Birch	15-25' x 15-25'	15'o.c.	5 gallon	Restricted to drainage corridors
Buddleia alternifolia	Alternate-Leaf Butterfly Bush	10-15' x 8-12'	6'o.c.	5 gallon	City of Aurora recommended xeriscape plant
Buddleia davidii	Butterfly Bush	6-12' x 4-8'	4'o.c.	5 gallon	City of Aurora recommended xeriscape plant
Caragana arborescens	Siberian Peashrub	10-15' x 8-12'	8'o.c.	5 gallon	City of Aurora recommended xeriscape plant
Cercocarpus ledifolius	Mountain Mahogany, Curlleaf	10-20' x 10-20'	10'o.c.	5 gallon	City of Aurora recommended xeriscape plant
Cercocarpus montanus	Mountain Mahogany, Curlleaf	6-8' x 4-6'	4'o.c.	5 gallon	City of Aurora recommended xeriscape plant
Cornus sericea	Redtwig Dogwood	6-8' x 6-10'	6'o.c.	5 gallon	Restricted to drainage corridors
Cotinus coggygria	Smoke Tree	8-10' x 8-10'	6'o.c.	5 gallon	Xeric-rated plant from the Garden Centers of Colorado
Cotoneaster lucidus	Peking Cotoneaster	6-12' x 4-6'	4'o.c.	5 gallon	City of Aurora recommended xeriscape plant
Cotoneaster multiflorus	Many-Flowered Cotoneaster	8-12' x 4-6'	4'o.c.	5 gallon	City of Aurora recommended xeriscape plant
Euonymus alata	Burning Bush	8-12' x 8-12'	6'o.c.	5 gallon	City of Aurora recommended xeriscape plant
Forsythia x intermedia	Forsythia	6-10' x 6-8'	6'o.c.	5 gallon	Xeric-rated plant from the Garden Centers of Colorado
Hibiscus syriacus	Rose of Sharon	8-10' x 6-8'	6'o.c.	5 gallon	Restricted to The Gardens Neighborhood
Kolkwitzia amabilis	Beauty Bush	10-12' x 10-12'	8'o.c.	5 gallon	City of Aurora recommended xeriscape plant
Ligustrum vulgare 'Cheyenne'	Cheyenne Privet	4-6' x 6-8'	5'o.c.	5 gallon	City of Aurora recommended xeriscape plant
Lonicera tatarica	Tatarian Honeysuckle	6-12' x 6-12'	5'o.c.	5 gallon	City of Aurora recommended xeriscape plant
Prunus americana	American Plum	8-12' x 6-8'	6'o.c.	5 gallon	City of Aurora recommended xeriscape plant
Prunus fruticosa	European Dwarf Cherry	6-8' x 6-8'	5'o.c.	5 gallon	City of Aurora recommended xeriscape plant
Prunus tomentosa	Nanking Cherry	8-12' x 6-10'	8'o.c.	5 gallon	City of Aurora recommended xeriscape plant
Prunus virginiana metanocarpa	Chokecherry	8-12' x 6-8'	6' o.c.	5 gallon	City of Aurora recommended xeriscape plant
Prunus x cistena	Purple Leaf Plum	6-8' x 4-6'	8' o.c.	5 gallon	City of Aurora recommended xeriscape plant
Quercus gambelii	Gambel Oak	8-20' x 6-12'	6'o.c.	5 gallon	City of Aurora recommended xeriscape plant
Rhamnus frangula 'Columnaris'	Columnar Buckthorn	8-12' x 3-4'	3' o.c.	5 gallon	City of Aurora recommended xeriscape plant
Rhus glabra	Smooth Sumac	8-15' x 8-10'	6'o.c.	5 gallon	City of Aurora recommended xeriscape plant
Rhus typhina	Saghorn Sumac	10-25' x 10-25'	6'o.c.	5 gallon	City of Aurora recommended xeriscape plant
Rhus typhina 'Lacinata'	Cutleaf Staghorn Sumac	6-8' x 6-8'	4'o.c.	5 gallon	City of Aurora recommended xeriscape plant
Rosa woodsii	Woods Rose	3-6' x 3-6'	4'o.c.	5 gallon	City of Aurora recommended xeriscape plant
Rubus deliciosus	Boulder Raspberry	3-6' x 3-6'	3'o.c.	5 gallon	City of Aurora recommended xeriscape plant
Rubus idaeus	Red Raspberry	4-6' x 3-6'	4'o.c.	5 gallon	City of Aurora recommended xeriscape plant
Rubus 'Autumn Bliss'	Autumn Bliss Raspberry	3-4' x 3-4'	4'o.c.	5 gallon	City of Aurora recommended xeriscape plant
Rubus 'Heritage'	Heritage Raspberry	5-6' x 3-4'	4' o.c.	5 gallon	City of Aurora recommended xeriscape plant
Rubus 'Jewell'	Jewell Black Raspberry	3-4' x 3-4'	4'o.c.	5 gallon	City of Aurora recommended xeriscape plant
Rubus ursinus 'Black Satin'	Black Satin Blackberry	5-6' x 3-4'	4'o.c.	5 gallon	City of Aurora recommended xeriscape plant
Rubus parviflorus	Thimbleberry	3-4' x 3-4'	3'o.c.	5 gallon	City of Aurora recommended xeriscape plant
Salix exigua	Coyote Willow	6-12' x 4-8'	6'o.c.	5 gallon	Restricted to drainage corridors
Salix purpurea pendula	Blue Fountain Willow	6-8' x 8-12'	6'o.c.	5 gallon	Restricted to drainage corridors
Sambucus canadensis 'Aurea'	Golden Elder	10' x 6'	8'o.c.	5 gallon	Xeric-rated plant from the Garden Centers of Colorado
Sambucus pubens	Native Red Berried Elder	4-12' x 6-12'	6'o.c.	5 gallon	Xeric-rated plant from the Garden Centers of Colorado
Shepherdia argentea	Buffaloberry	8-12' x 6-12'	6'o.c.	5 gallon	City of Aurora recommended xeriscape plant
Syringa sp.	Lilac	8-12' x 8-12'	6'o.c.	5 gallon	City of Aurora recommended xeriscape plant
Viburnum dentatum	Arrowwood Viburnum	6-8' x 6-8'	6' o.c.	5 gallon	City of Aurora recommended xeriscape plant
Viburnum lantana	Wayfaring Tree	10-15' x 6-8'	8'o.c.	5 gallon	City of Aurora recommended xeriscape plant
Viburnum lentago	Nannyberry Viburnum	8-15' x 6-8'	6'o.c.	5 gallon	City of Aurora recommended xeriscape plant
Viburnum opulus 'Roseum'	Snowball Viburnum	8-12' x 8-12'	6'o.c.	5 gallon	City of Aurora recommended xeriscape plant
Viburnum trilobum	Highbush Cranberry	8-12' x 6-10'	6'o.c.	5 gallon	City of Aurora recommended xeriscape plant
Viburnum x burkwoodii	Burkwood Viburnum	10-12' x 10-12'	6'o.c.	5 gallon	City of Aurora recommended xeriscape plant

LANDSCAPE PLANT LIST - Cont'd.

SHRUBS - MEDIUM (4-6' high)					
Botanical Name	Common Name	Height X Spread	Spacing	Min. Size	Notes
Berberis sp.	Barberry	4-6' x 4-6'	3'o.c.	5 gallon	City of Aurora recommended xeriscape plant
Chaenomeles speciosa	Flowering Quince	4-6' x 4-8'	4'o.c.	5 gallon	Xeric-rated plant from the Garden Centers of Colorado
Cornus sericea 'Isanti'	Isanti Dogwood	4-6' x 4-6'	4'o.c.	5 gallon	Restricted to drainage corridors
Cotoneaster divaricatus	Spreading Cotoneaster	4-6' x 6-8'	4'o.c.	5 gallon	City of Aurora recommended xeriscape plant
Ericameria nauseosa var. speciosa	Tall Blue/Green Rabbitbrush	4-6' x 4-6'	4'o.c.	5 gallon	City of Aurora recommended xeriscape plant
Euonymus alata 'Compacta'	Dwarf Burning Bush	4-6' x 4-6'	4'o.c.	5 gallon	City of Aurora recommended xeriscape plant
Fallugia paradoxa	Apache Plume	3-6' x 3-6'	4'o.c.	5 gallon	City of Aurora recommended xeriscape plant
Hydrangea species	Hydrangea	3-6' x 3-6'	4'o.c.	5 gallon	Restricted to The Gardens Neighborhood
Hydrangea macrophylla 'Endless Summer'	Endless Summer Hydrangea	3-5' x 3-5'	4'o.c.	5 gallon	Restricted to The Gardens Neighborhood
Perovskia artiplicifolia	Russian Sage	3-5' x 3-5'	4'o.c.	5 gallon	City of Aurora recommended xeriscape plant
Philadelphus vir. 'Minnesota Snowflake'	Minnesota Snowflake Mockorange	4-6' x 4-6'	4'o.c.	5 gallon	City of Aurora recommended xeriscape plant
Physocarpus opulifolius 'Diablo'	Diablo Ninebark	6-8' x 4-6'	5'o.c.	5 gallon	City of Aurora recommended xeriscape plant
Prunus glandulosa rosea	Pink Flowering Almond	4-6' x 4-6'	4'o.c.	5 gallon	City of Aurora recommended xeriscape plant
Prunus tenella	Dwarf Russian Almond	4-5' x 4-5'	4'o.c.	5 gallon	City of Aurora recommended xeriscape plant
Rhus trilobata	Three Leaf Sumac	3-6' x 3-6'	4'o.c.	5 gallon	City of Aurora recommended xeriscape plant
Ribes alpinum	Alpine Currant	3-6' x 3-6'	4'o.c.	5 gallon	City of Aurora recommended xeriscape plant
Ribes aureum	Yellow Flowering Currant	4-6' x 4-6'	4'o.c.	5 gallon	City of Aurora recommended xeriscape plant
Ribes x nidigrolaria	Jostaberry	3-4' x 3-4'	4'o.c.	5 gallon	City of Aurora recommended xeriscape plant
Ribes sativum 'Red Lake'	Red Lake Currant	4' x 3'	3'o.c.	5 gallon	City of Aurora recommended xeriscape plant
Ribes uva-crispa 'Pixwell'	Pixwell Gooseberry	3-4' x 3-4'	3'o.c.	5 gallon	City of Aurora recommended xeriscape plant
Rosa sp.	Shrub Roses	2-6' x 2-6'	4' o.c.	5 gallon	City of Aurora recommended xeriscape plant
Salix irrorata	Blue Stem Willow	4-12' x 4-8'	4' o.c.	5 gallon	Restricted to drainage corridors
Sorboria sorbifolia	Ural False Spirea	4-6' x 6-8'	4'o.c.	5 gallon	City of Aurora recommended xeriscape plant
Spirea japonica 'Snowmound'	Snowmound Spirea	3-5' x 3-5'	3'o.c.	5 gallon	City of Aurora recommended xeriscape plant
Spirea x vanhouttei	Vanhoutte Spirea	5-7' x 6-8'	6' o.c.	5 gallon	City of Aurora recommended xeriscape plant
Syringa meyeri	Dwarf Korean Lilac	4-6' x 4-6'	4'o.c.	5 gallon	City of Aurora recommended xeriscape plant
Syringa patula 'Miss Kim'	Miss Kim Lilac	3-5' x 3-5'	4'o.c.	5 gallon	City of Aurora recommended xeriscape plant
Viburnum trilobum 'Compactum'	American Compact Cranberrybush	4-5' x 4-5'	4'o.c.	5 gallon	City of Aurora recommended xeriscape plant
Viburnum cariesii	Korean Spice Viburnum	4-6' x 4-6'	4'o.c.	5 gallon	City of Aurora recommended xeriscape plant
Viburnum juddii	Judd Viburnum	4-6' x 4-6'	4'o.c.	5 gallon	City of Aurora recommended xeriscape plant

SHRUBS - LOW (under 4' high)					
Botanical Name	Common Name	Height X Spread	Spacing	Min. Size	Notes
Amorpha canescens	Leadplant	2-4' x 2-4'	3'o.c.	5 gallon	City of Aurora recommended xeriscape plant
Berberis thunbergii 'Crimson Pygmy'	Crimson Pygmy Barberry	1-2' x 1-2'	2'o.c.	5 gallon	City of Aurora recommended xeriscape plant
Caryopteris clandonensis	Blue Mist Spirea	3-4' x 2-4'	3.5'o.c.	5 gallon	City of Aurora recommended xeriscape plant
Cornus serica 'Kelseyii'	Kelsey Dogwood	2-3' x 2-3'	3'o.c.	5 gallon	Restricted to drainage corridors
Cotoneaster apiculatus	Cranberry Cotoneaster	18-24" x 4-6'	3'o.c.	5 gallon	City of Aurora recommended xeriscape plant
Daphne x burkwoodi 'Carol Mackie'	Carol Mackie Daphne	3-5' x 3-5'	3'o.c.	5 gallon	City of Aurora recommended xeriscape plant
Daphne x burkwoodi 'Somerset'	Somerset Daphne	3-5' x 3-5'	3'o.c.	5 gallon	City of Aurora recommended xeriscape plant
Ephedra viridis	Mormon Tea	2-3' x 2-3'	2'o.c.	5 gallon	Xeric-rated plant from the Garden Centers of Colorado
Ericameria nauseosa var. nauseosa	Dwarf Blue Rabbitbrush	1-4' x 1-4'	3'o.c.	5 gallon	City of Aurora recommended xeriscape plant
Forsythia intermedia 'Arnold's Dwarf'	Arnold's Dwarf Forsythia	2-3' x 3-6'	3'o.c.	5 gallon	Xeric-rated plant from the Garden Centers of Colorado
Hydrangea arborescens	Annabelle Hydrangea	3-4' x 3-4'	3'o.c.	5 gallon	Restricted to The Gardens Neighborhood
Ligustrum vulgare 'Lodense'	Lodense Privet	2-3' x 3-4'	18"o.c.	5 gallon	City of Aurora recommended xeriscape plant

LANDSCAPE PLANT LIST - Cont'd.

Lonicera xylosteum 'Emerald Mound'	Emerald Mound Honeysuckle	2-3' x 3-4'	3'o.c.	5 gallon	City of Aurora recommended xeriscape plant
Philadelphus vir. 'Dwarf Minn. Snowflake'	Dwf. Minn. Snowflake Mockorange	3-4' x 2-3'	3'o.c.	5 gallon	City of Aurora recommended xeriscape plant
Potentilla sp.	Cinquefoil	2-4' x 2-4'	3'o.c.	5 gallon	City of Aurora recommended xeriscape plant
Prunus besseyi	Western Sandcherry	3-6' x 3-5'	4'o.c.	5 gallon	City of Aurora recommended xeriscape plant
Prunus besseyi 'Pawnee Buttes'	Pawnee Buttes Sandcherry	2-4' x 4-6'	4'o.c.	5 gallon	City of Aurora recommended xeriscape plant
Rhus aromatica 'Gro-Low'	Dwarf Fragrant Sumac	2-3' x 6-8'	4'o.c.	5 gallon	City of Aurora recommended xeriscape plant
Rhus glabra crismontana	Rocky Mountain Sumac	2-3' x 2-3'	2'o.c.	5 gallon	City of Aurora recommended xeriscape plant
Spirea japonica 'Anthony Waterer'	Anthony Waterer Spirea	2-3' x 2-3'	3'o.c.	5 gallon	City of Aurora recommended xeriscape plant
Spirea japonica 'Goldflame'	Goldflame Spirea	2-3' x 2-3'	3'o.c.	5 gallon	City of Aurora recommended xeriscape plant
Spirea japonica 'Little Princess'	Little Princess Spirea	12-18" x 2-3'	2'o.c.	5 gallon	City of Aurora recommended xeriscape plant
Spirea nipponica	Snowmound Spirea	3-4' x 3-4'	4'o.c.	5 gallon	City of Aurora recommended xeriscape plant
Yucca filimentosa	Adam's Needle	2-3' x 3-4'	3'o.c.	5 gallon	City of Aurora recommended xeriscape plant

GROUNDCOVERS AND PERENNIALS					
Botanical Name	Common Name	Height X Spread	Spacing	Min. Size	Notes
Achillea sp.	Yarrow	18-24" x 2-3'	24"o.c.	1 gallon	City of Aurora recommended xeriscape plant
Agastache sp.	Hyssop	varies	varies	1 galon	City of Aurora recommended xeriscape plant
Ajuga	Carpet Bugle	4-6" x 12-24"	24"o.c.	1 gallon	City of Aurora recommended xeriscape plant
Alchemilla mollis	Lady's Mantle	18-24" x 18-24"	18" o.c.	1 gallon	City of Aurora recommended xeriscape plant
Alyssum saxatile	Basket of Gold	12-18" x 12-18"	18"o.c.	1 gallon	City of Aurora recommended xeriscape plant
Anemone sp.	Windflower	1-2' x 12-18"	18"o.c.	1 gallon	City of Aurora recommended xeriscape plant
Anemone sylvestris	Snow Drop Windflower	12-18" x 12-18"	12"o.c.	1 gallon	City of Aurora recommended xeriscape plant
Aquilegia caerulea	Rocky Mountain Columbine	18-24" x 12-18"	18"o.c.	1 gallon	City of Aurora recommended xeriscape plant
Artemisia sp.	Sage	varies	varies	1 gallon	City of Aurora recommended xeriscape plant
Aster 'Monch'	Monch Aster	24-36" x 18-24"	18"o.c.	1 gallon	City of Aurora recommended xeriscape plant
Aster sp.	Aster	1-3' x 12-30"	18"o.c.	1 gallon	City of Aurora recommended xeriscape plant
Bergenia cordifolia	Heart-Leafed Bergenia	12-18" x 18-24"	18"o.c.	1 gallon	City of Aurora recommended xeriscape plant
Callirhoe involucrata	Poppy Mallow	6-12" x 2-3'	24"o.c.	1 gallon	City of Aurora recommended xeriscape plant
Campanula carpatica	Carpathian Harebell	6-12" x 12-18"	18"o.c.	1 gallon	City of Aurora recommended xeriscape plant
Campanula persicifolia	Harebell/Bellflower	18-24" x 12-18"	18"o.c.	1 gallon	City of Aurora recommended xeriscape plant
Campanula rotundifolia	Native Bluebells	6-18" x 12-18"	18"o.c.	1 gallon	City of Aurora recommended xeriscape plant
Centaurea montana	Perennial Bachelor Button	12-24" x 24-36"	18"o.c.	1 gallon	City of Aurora recommended xeriscape plant
Centranthus ruber	Red Valerian	18-36" x 18-24"	24"o.c.	1 gallon	City of Aurora recommended xeriscape plant
Ceratostigma plumbaginoides	Plumbago	8-12" x 12-18"	18"o.c.	1 gallon	City of Aurora recommended xeriscape plant
Coreopsis verticullata 'Moonbeam'	Moonbeam Coreopsis	12-18" x 12-18"	18"o.c.	1 gallon	City of Aurora recommended xeriscape plant
Cotoneaster dammeri 'Coral Beauty'	Coral Beauty Cotoneaster	1-2' x 4-6'	3.5'o.c.	5 gallon	City of Aurora recommended xeriscape plant
Delosperma sp.	Ice Plant	varies	18"o.c.	1 gallon	City of Aurora recommended xeriscape plant
Dianthus sp.	Pinks	varies	18"o.c.	1 gallon	City of Aurora recommended xeriscape plant
Diascia integerrima 'Coral Canyon'	Coral Canyon Twinspur	12-15" x 8-12"	12"o.c.	1 gallon	City of Aurora recommended xeriscape plant
Echinacea sp.	Coneflower	24-36" x 18-24"	24"o.c.	1 gallon	City of Aurora recommended xeriscape plant
Epilobium canum latifolium	Hummingbird Flower	18-24" x 18-24"	18"o.c.	1 gallon	City of Aurora recommended xeriscape plant
Euonymus fortunei 'Coloratus'	Purpleleaf Wintercreeper	18-24" x 3-4'	3'o.c.	1 gallon	City of Aurora recommended xeriscape plant
Gaillardia arista	Blanket Flower	18-24" x 18-24"	18"o.c.	1 gallon	City of Aurora recommended xeriscape plant
Galium odoratum	Sweet Woodruff	6-8" x 8-12"	18"o.c.	1 gallon	City of Aurora recommended xeriscape plant
Gaura lindheimeri	Whirling Butterflies	2-3' x 18-24"	24"o.c.	1 gallon	City of Aurora recommended xeriscape plant
Gazania sp.	Hardy Gazania	2-4' x 8-10'	10"o.c.	1 gallon	City of Aurora recommended xeriscape plant
Geranium sp.	Cranesbill	12-18" x 18-24"	18"o.c.	1 gallon	City of Aurora recommended xeriscape plant

Geum sp.	Avens	6-24" x 6-18"	12"o.c.	1 gallon	City of Aurora recommended xeriscape plant
Glechoma hederacea	Ground Ivy	3-6" x 18-24"	24"o.c.	1 gallon	City of Aurora recommended xeriscape plant
Gypsophila sp.	Baby's Breath	varies	18"o.c.	1 gallon	City of Aurora recommended xeriscape plant
Helianthemum sp.	Sun Rose	6-12" x 18-24"	18"o.c.	1 gallon	City of Aurora recommended xeriscape plant
Heliopsis helianthoides	False Sunflower	36-42" x 12-24"	24"o.c.	1 gallon	City of Aurora recommended xeriscape plant
Hemerocallis sp.	Daylily	12-36" x 12-36"	24"o.c.	1 gallon	City of Aurora recommended xeriscape plant
Heuchera sp.	Coral Bells	varies	24"o.c	1 gallon	City of Aurora recommended xeriscape plant
Hosta sp.	Hosta	12-24" x 12-24"	18"o.c.	1 gallon	City of Aurora recommended xeriscape plant
Iberis sempervirens	Candy Tuft	8-12" x 18-24"	24"o.c.	1 gallon	City of Aurora recommended xeriscape plant
Iris germanica	Bearded Iris	2-3' x 12-18"	18"o.c.	1 gallon	City of Aurora recommended xeriscape plant
Iris pumila	Dwarf Iris	8-12" x 8-12"	12"o.c.	1 gallon	Xeric-rated plant from the Garden Centers of Colorado
Iris siberica	Siberian Iris	3-4' x 18-24"	24"o.c.	1 gallon	Xeric-rated plant from the Garden Centers of Colorado
Knifophia 'Corallina'	Torch Lily	3-4' x 18-24"	18"o.c.	1 gallon	City of Aurora recommended xeriscape plant
Lavandula angustifolia	Lavander	12-24" x 12-18"	18"o.c.	1 gallon	City of Aurora recommended xeriscape plant
Leucanthemum sp.	Shasta Daisy	varies	24"o.c.	1 gallon	City of Aurora recommended xeriscape plant
Liatris spicata	Gayfeather	varies	24"o.c.	1 gallon	City of Aurora recommended xeriscape plant
Linum sp.	Flax	varies	18"o.c.	1 gallon	City of Aurora recommended xeriscape plant
Mahonia repens	Oregon Grape	12-18" x 12-18"	24"o.c.	1 gallon	City of Aurora recommended xeriscape plant
Monarda sp.	Bee-Balm	2-3' x 1-3'	18"o.c.	1 gallon	City of Aurora recommended xeriscape plant
Nepeta sp.	Catmint	varies	18"o.c.	1 gallon	City of Aurora recommended xeriscape plant
Oenothera sp.	Evening Primrose	varies	24"o.c.	1 gallon	City of Aurora recommended xeriscape plant
Origanum laevigatum 'Herrenhausen'	Purple Oregano	18-24" x 18-24"	18"o.c.	1 gallon	City of Aurora recommended xeriscape plant
Osteospermum sp.	Perennial Sun Daisy	8-12" x 10-15"	14"o.c.	1 gallon	City of Aurora recommended xeriscape plant
Paeonia lactifolia	Peony	24-36" x 24-36"	24"o.c.	1 gallon	City of Aurora recommended xeriscape plant
Papavar orientale 'Salmon'	Salmon Oriental Poppy	24-36" x 18-24"	18"o.c.	1 gallon	City of Aurora recommended xeriscape plant
Penstemon sp.	Penstemon	varies	18"o.c.	1 gallon	City of Aurora recommended xeriscape plant
Persicana affinis	Himalayan Border Jewel	6-8" x 18-24"	18"o.c.	1 gallon	City of Aurora recommended xeriscape plant
Phlox sp.	Phlox	varies	18"o.c.	1 gallon	City of Aurora recommended xeriscape plant
Platycodon grandiflorus	Balloon Flower	12-24" x 12-18"	18"o.c.	1 gallon	City of Aurora recommended xeriscape plant
Rosmarinus officinalis 'Arp'	Lemon Rosemary	2-4' x 2-3'	2'o.c.	1 gallon	City of Aurora recommended xeriscape plant
Rudbeckia sp.	Black-Eyed Susan	varies	24"o.c.	1 gallon	City of Aurora recommended xeriscape plant
Salvia officinalis	Garden Sage	18-24" x 18-24"	24"o.c.	1 gallon	City of Aurora recommended xeriscape plant
Salvia sp.	Salvia varieties	18-24" x 12-18"	24"o.c.	1 gallon	City of Aurora recommended xeriscape plant
Santolina sp.	Lavender Cotton	12-18" x 12-18"	18"o.c.	1 gallon	City of Aurora recommended xeriscape plant
Saponaria sp.	Soapwort	varies	18"o.c.	1 gallon	City of Aurora recommended xeriscape plant
Sedum sp.	Stonecrop	varies	24"o.c.	1 gallon	City of Aurora recommended xeriscape plant
Stachys byzantina 'Silver Carpet'	Flowerless Lamb's Ear	12-18" x 12-18"	18"o.c.	1 gallon	City of Aurora recommended xeriscape plant
Thymus sp.	Thyme	1/2-4" x 12-24"	18"o.c.	1 gallon	City of Aurora recommended xeriscape plant
Veronica sp.	Speedwell	varies	18"o.c.	1 gallon	City of Aurora recommended xeriscape plant
Vinca minor 'Bowlesii'	Bowles Periwinkle	4-6" x 12-18"	24"o.c.	1 gallon	City of Aurora recommended xeriscape plant

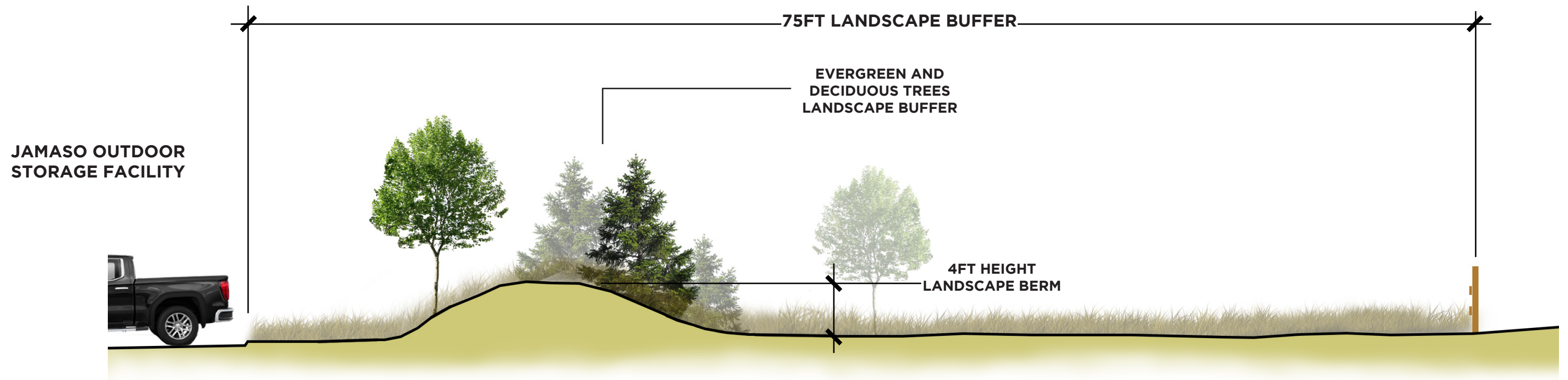
ORNAMENTAL GRASSES					
Botanical Name	Common Name	Height X Spread	Spacing	Min. Size	Notes
Andropogon gerardii	Big Bluestem Grass	5-6' x 2-3'	3'o.c.	1 gallon	City of Aurora recommended xeriscape plant
Calamagrostis sp.	Feather Reed Grass	3-4' x 2-3'	2-3'o.c.	1 gallon	City of Aurora recommended xeriscape plant
Chasmanthium latifolium	Northern Sea Oats	2-3' x 18-24"	18"o.c.	1 gallon	City of Aurora recommended xeriscape plant
Deschampsia caespitosa	Tufted Hair Grass	2-3' x 18-24"	24"o.c.	1 gallon	City of Aurora recommended xeriscape plant

LANDSCAPE PLANT LIST - Cont'd.

ORNAMENTAL GRASSES					
Festuca sp.	Fescue Grass	4-10" x 6-10"	8-12"o.c.	1 gallon	City of Aurora recommended xeriscape plant
Helictotrichon sempervirens	Blue Avena Grass	2-3' x 18-24"	24"o.c.	1 gallon	City of Aurora recommended xeriscape plant
Miscanthus sinensis	Maiden Grass	varies	varies	1 gallon	City of Aurora recommended xeriscape plant
Panicum virgatum	Switch Grass	3-5' x 16-20"	18"o.c.	1 gallon	City of Aurora recommended xeriscape plant
Pennisetum setaceum (hardy varieties)	Hardy Fountain Grass	varies	varies	1 gallon	City of Aurora recommended xeriscape plant
Saccharum ravennae	Plume Grass	10-15' x 5-6'	5'o.c.	1 gallon	Xeric-rated plant from the Garden Centers of Colorado
Schizachyrium scoparium	Little Bluestem	2-3' x 18-24"	18"o.c.	1 gallon	City of Aurora recommended xeriscape plant
Sorghastrum nutans	Blue Indian Grass	5-6' x 2-3'	24"o.c.	1 gallon	City of Aurora recommended xeriscape plant

VINES AND CLIMBERS					
Botanical Name	Common Name	Height X Spread	Spacing	Min. Size	Notes
Campsis radicans	Trumpet Vine	25-50'	as desired	1 gallon	City of Aurora recommended xeriscape plant
Clematis sp.	Clematis	6-10'	as desired	1 gallon	City of Aurora recommended xeriscape plant
Humulus lupulus neomexicana	Native Hop Vine	10-15'	as desired	1 gallon	Xeric-rated plant from the Garden Centers of Colorado
Lonicera japonica 'Halliana'	Hall's Honeysuckle	15-25'	as desired	1 gallon	City of Aurora recommended xeriscape plant
Parthenocissus tricuspidata	Boston Ivy	30-50'	as desired	1 gallon	Xeric-rated plant from the Garden Centers of Colorado
Rosa sp.	Climbing Rose	8-20'	as desired	1 gallon	City of Aurora recommended xeriscape plant
Vitis sp.	Grape	30-50'	as desired	1 gallon	Xeric-rated plant from the Garden Centers of Colorado
Vitis labrusca 'Eastern Concord'	Concord Grape	20-25' x 3-4'	3'o.c.	1 gallon	Xeric-rated plant from the Garden Centers of Colorado
Vitis labrusca 'Himrod'	Himrod White Grape	20-25' x 3-4'	3'o.c.	1 gallon	Xeric-rated plant from the Garden Centers of Colorado
Vitis labrusca 'Niagara'	Niagara White Grape	20-25' x 3-4'	3'o.c.	1 gallon	Xeric-rated plant from the Garden Centers of Colorado
Wisteria sinensis	Wisteria	20-30'	as desired	1 gallon	Xeric-rated plant from the Garden Centers of Colorado

LANDSCAPE BUFFER BETWEEN OUTDOOR SELF-STORAGE AND THE SKY RANCH SUBDIVISION



NOTE: 75% OF TREES SHALL BE EVERGREEN WITHIN BUFFER