

General Comment - Please
standardize font and size
throughout document.



Crestone Peak Resources Operating LLC

Letter of Introduction

ASPEN 3-65 15-14-13 3BH, 4AH, 4BH

QUICKSILVER 3-65 16-17-18-13 2BH, 3AH, 3BH, 4AH, 4BH

City File No. DA-2394-00

(Aspen 3-65 15-14 South Facility)

TABLE OF CONTENTS

Letter of Introduction.....	1-3
Name, Address, Email and Telephone Number of the Applicant.....	1
Summary Statement of the Project	2-3
 Best Management Practices	 3-10
Definitions	3
Access Roads.....	3
Air Quality.....	3
Anchoring	4
Automatic Safety Protective Systems/Surface Safety Valves	4
Burning	4
Chemical Disclosure and Storage	4
Class II Underground Injection Control Wells	4
Closed-Loop Pitless Systems for the Containment and/or Recycling of Drilling Fluids	4
Color/Paint Color	4
Combustion Devices	5
Containment Berms.....	5
Cultural and Historical Resource Protection	5
Discharge Valves.....	5
Electric Equipment	5
Events or Incidents/Events to be Reported	5
Emergency Response/Action Plan	5
Fencing/Security Fencing	6
Flammable Material	6
Flowlines.....	6
Fugitive Dust Suppression.....	6
General Maintenance	6
Landscaping.....	6
Lighting	6
Low Profile Equipment/Low Profile Tanks.....	6
Maintenance of Machinery	6
Mud Tracking.....	7
Noise Management Plan/Noise Mitigation	7
Notifications to the City Regarding Commencement of Operations and Phases of Operations/Notification to the City Regarding Commencement of Construction at CGF and Pipeline Operations/Notifications to the City.....	7
Noxious Weed Control.....	8

Odor.....	8
PHA-Hazard and Operability Study	8
Plugged and Decommissioned Well Testing.....	8
Reclamation.....	8
Interim	8
Final	8
Reduced Emission Completions (Commonly Known as Green Completions)	8
Removal of Debris.....	9
Removal of Equipment	9
Road Repairs.....	9
Spills.....	9
Stormwater Management	9
Trailers.....	9
Transportation and Circulation	9
Transportation and Storage of Fluids.....	10
Tree Mitigation	10
Visual Mitigation.....	10
Wastewater and Waste Management	10
Water Protection Requirements.....	10
Water Quality Monitoring Plan/Groundwater Pollution Mitigation	10
Water Supply	11
 Neighborhood Meeting Results	 12
Typical Photos.....	13-26
Plat Package (excerpts)	27-44

**ASPEN 3-65 15-14-13 3BH, 4AH, 4BH
QUICKSILVER 3-65 16-17-18-13 2BH, 3AH, 3BH, 4AH, 4BH
(Aspen 3-65 15-14 South Facility)**

**OIL & GAS PERMIT
W/2 SW/4 SEC. 15-T3S-R65W, 6TH P.M.
ADAMS COUNTY, COLORADO
(CITY OF AURORA)**

Prepared for:



Crestone Peak Resources Operating LLC

555 17th Street, Suite 3300
Denver, CO 80202
303.294.7876
sfarkas@civiresources.com

Prepared by:
Uintah Engineering and Land Surveying
85 South 200 East, Vernal, UT 84078
O: 435.789.1017

Project Summary

Project Location

Crestone Peak Resources Operating LLC, the applicant, plans the new Aspen 3-65 15-14 South oil and gas well location in the west half of the southwest quarter, Section 15, Township 3 South, Range 65 West, of the 6th Principal Meridian. Eight new wells are planned on one pad with wells spaced 20' apart in a north to south direction, where the Northern most well 3BH is located approximately 510 feet from the west section line, and approximately 1,460 feet from the south section line. The existing topography generally falls from southwest to northeast. The site is located within the Coyote Run watershed and lies approximately 1.25 miles east of the 100-year floodplain to the west. No other non-storm water sources are contemplated at this project site. The land use is currently for cropland. The proposed project location is zoned Airport District (AD). Please refer to **Site Plan and Vicinity Map**.

Purpose, Well Site Construction and Access Road

To support drilling operations of the eight (8) wells, a graded sloped (.5%) 570'W by 700'L granular pad will be constructed. After drilling operations are completed, the pad will be reclaimed, reducing the pad to a total size of 385'W x 520'L granular sloped (.5%) pad to support production equipment and 8 wells. The total disturbance for the pad will be 18.26 acres that will be reduced to 12.85 acres during interim reclamation. The well pad will be accessed by a 678' long, 30' wide, granular access road that will connect to the 56th Ave. and

Construction of the pad and access road will take approximately 2 months. BMPs will be installed to mitigate the earthmoving activities and the disturbed surfaces to achieve re-vegetation. A four-foot-tall wildlife fence will be installed around the Well Site and a locked gate will be installed at the access road/Well Site Entrance. In conjunction with the interim reclamation phase, an eight foot (8') tall opaque fence and locking gate will be installed around the pad. This fencing and gate will provide security for the life of the well.

Please include a description of the distance and depth of the horizontals will travel. This is in relation to the OGD map on page 74.

Following the pad and access road construction, a drilling rig will be brought to the site, commencing a seven- day a week, twenty-four hours a day, drilling operation for each well. As depicted on page 44 the Aspen 3-65 15-14 South wellpad will develop the Quicksilver 3-65 16-17-18-13 DSU from east to west from section 15, 3S-65W into sections 16, 17, and 18, of 3S-65W, continuing through section 13, 3S-66W. The Aspen 3-65 15-14 South wellpad will also develop the Aspen 3-65 15-14-13 DSU from west to east from section 15, 3S-65W into sections 15, 14, and 13, 3S-65W. Typical operations on the well pad site will consist of a rig at the center of the pad along with water storage to be used in the drilling operation, pipe racks to temporarily store drill pipe, a mud pump to circulate the drilling fluids through the system, power generators, tool storage, fuel storage for said generators and pumps, and a doghouse enclosure to protect workers from inclement weather. Several mud tanks will be located adjacent to the rig to store drilling fluid until it is required down the wellbore. The site will be operated 24 hours per day, 7 days a week.

Crestone Peak Resources Operating LLC and the City of Aurora have executed a Water Use Agreement that will secure water for the drilling and completion operations. A third-party water provider will be contracted to manage the transportation of the water to the drill site. Crestone Peak Resources Operating LLC and the City of Aurora executed a Road Maintenance Agreement dated January 3, 2018, and subsequently amended December 18, 2019, which includes the Aspen 3-65 15-14 South well pad.

Construction trailers, portable toilets, garbage storage, and extra fuel storage will be located near the edge of the pad site. The portable toilets shall have hand washing facilities which will be readily accessible to employees and contractors and will ensure that employees and contractors wash their hands immediately or as soon as feasible after removal of gloves or other personal protective equipment pursuant to OSHA requirements under Occupational Exposure to Bloodborne Pathogens, 29 CFR 1910.1030, required in sections (d)(2)(iii) and (v).

Crestone Peak Resources Operating LLC utilizes a “closed loop system” where water used to support drilling operations will be piped in and temporarily stored on site and then be disposed of offsite, in a manner approved by the Colorado Energy and Carbon Management Commission (ECMC).

The Completion Phase follows drilling, which combined, will last approximately two weeks for each well. The Completion Phase is the phase that the formation fracturing occurs. Fracturing materials, mainly sand, are trucked in and used for the fracturing process. Said equipment consists of a pumping unit, 4 oil and 2 water tanks for water and other fracturing fluids. Production equipment is installed concurrent with the Completion Phase. Said equipment consists of a pumping unit, 4 oil and 2 water tanks for extracted minerals, vapor recovery facilities, a meter run, combustors, and compressors. Produced oil will be transported by pipeline takeaway that will be in place prior to first production. Produced gas will continue to be delivered to the gathering system already in place. Produced water will be disposed of offsite as approved by the ECMC. Production of a viable well can last thirty years.

The BMP Site Specific narratives that follow summarize the BMPs listed in Exhibit C of the Operator Agreement (OA) between the City of Aurora and ConocoPhillips Company and its subsidiaries, dated June 5, 2019, and subsequently assigned to Crestone Peak Resources Operating LLC, with a brief explanation of how the Applicant intends to accomplish the obligation of each specific BMP for the Aspen 3-65 15-14 South project.

Please note that the numbering does not correlate to the individual BMP Operating Agreement numbers.

- 1. Definitions:** The Operator Agreement references the following defined terms that have been used throughout this application: **Residential Building Unit, High Occupancy Building, Construction Phase, Drilling Phase, Completion Phase, Production Phase, and Reclamation Phase.** (see Operator Agreement. Exhibit C, BMP No. 1).
- 2. Access Roads:** The final access road alignment was laid out during the civil survey. The route was also based on the surface ownership of the Applicant along with the local topography. The access point at the nearest public roadway was determined by sight distances and setbacks from existing intersections. The first one hundred feet (100') will be constructed of asphalt. The access road will be constructed in conformance with the City's 2023 Roadway Specification Manual. (See Operator Agreement, Exhibit C, BMP No. 28; Site Plan: General Construction Notes 4&6; Fire Access Road and Pad Construction Note Nos. 1, 2 and 3; and Operations Plan.)
- 3. Air Quality:** The Fieldwide plan addresses policies and procedures used to evaluate, eliminate, capture, or minimize all potentially harmful emissions and compliance with all applicable state and federal regulations, including regulations promulgated by Colorado Department of Public Health and Environment, Colorado Oil and Gas Conservation Commission and United States Environmental Protection Agency. The Applicant will be working with Project Canary, a third-party vendor who manufactures and services the air quality monitoring stations within 500 feet of the Well Site. At least five days prior to oil and gas operations commencing, the background monitoring station(s) will be

placed away from and upwind of the emission concern areas. The air quality monitoring stations will provide continuous monitoring throughout the life of the well(s). Vendor will also manually deploy at least one whole-air canister to collect samples for a one-week time span prior to oil and gas operations commencing. *(See Operator Agreement, Exhibit C, BMP No. 15; Air Quality Plan, and Site Plan.)*

4. **Anchoring:** During Drilling and Completion phases of the Aspen 3-65 15-14 South, all equipment requiring anchoring is anchored using surface anchors or removable anchoring systems, no anchors are left behind for future use. During Production Phase, tanks and separation equipment are secured to the ground using anchors engineered to resist flotation, collapse, lateral movement, or subsidence. The Aspen 3-65 15-14 South location is not in a floodplain. *(See Operator Agreement, Exhibit C, BMP No. 41.)*
5. **Automatic Safety Protective Systems and Surface Safety Valves:** The Aspen 3-65 15-14 South Well Site will be equipped to operate remotely via the automated safety protective system. This system monitors flowing pressures and other operating parameters which have predetermined threshold values programmed and will remotely shut the well in should certain upset conditions be detected. All vessels and tanks are equipped with high level remote shutdowns to prevent an overflow scenario. Additionally, the automated safety system provides the ability to remotely shut-in wells on demand through operator remote intervention. *(See Operator Agreement, Exhibit C, BMP No. 45 and Operations Plan.)*
6. **Burning:** The Applicant will not allow open burning of debris to occur on the Aspen 3-65 15-14 South Well Site or any oil and gas operation, as per City code. This does not include emergency flares. *(See Operator Agreement, Exhibit C, BMP No. 6 and Operations Plan.)*
7. **Chemical Disclosure and Storage:** All hydraulic fracturing chemicals will be disclosed to the Aurora Fire Rescue department. Prior to the bringing of such chemicals onto the Aspen 3-65 15-14 South property, the Applicant will make available to the City the storage, containment and disposal method for such chemicals. *(See Operator Agreement, Exhibit C, BMP No. 7 and Operations Plan.)*
8. **Class II Underground Injection Control Wells:** The Applicant will not develop, use, operate, or contract with any third party for the use of any Class II underground injection control wells within the city limits or within a four-mile buffer of the City's existing or planned critical infrastructure. *(See Operator Agreement, Exhibit C, BMP No. 34; and Operations Plan.)*
9. **Closed-Loop Pitless System for the Containment and/or Recycling of Drilling Fluids:** Aspen 3-65 15-14 South wells will be drilled, completed and operated using closed-loop pitless systems for containment and/or reuse of all drilling, completion, flowback and produced fluids. Applicant will reuse fluids to the maximum extent practicable, with the City's understanding that Applicant is limited in its ability to reuse all fluids. All above ground storage, including tanks and separators, for use during drilling, completion, flowback and other produced fluids will have secondary containment. The secondary containment system used around the tank battery is an engineered steel panel containment wall with a full impermeable synthetic liner under all tanks and up the sides of the containment wall. This system is consistent across our operations, no difference between site specific and field wide design. *(See Operator Agreement, Exhibit C, BMP No. 5; Operations Plan and Site Plan.)*
10. **Color/Paint Color:** All permanent above ground associated production equipment, structures and stationary equipment for the Aspen 3-65 15-14 South will be painted in a tan or brown matte finish unless a different color is necessary for safety per regulations. *(See Operator Agreement, Exhibit C, BMP No. 8; Operations Plan)*

- 11. Combustion Devices:** Combustors will be available at the Aspen 3-65 15-14 South Well Site during the entire production phase to eliminate fugitive emissions for maintenance or emergency use only. The device will be fired using natural gas and operate with a 98% or higher hydrocarbon destruction efficiency. The device will be designed and operated in a manner that will ensure invisible emissions during normal operation. Visible emissions do not include radiant energy or water vapor. (See *Operator Agreement, Exhibit C, BMP No. 19; Operations Plan; Air Quality Plan and Site Plan (Production page) Best Management Practices Note No. 7.*)
- 12. Containment Berms:** A containment system capable of containing one and one-half times (150%) the capacity of the largest vessel, plus sufficient freeboard to prevent overflow will be constructed around all permanent tanks at the Aspen 3-65 15-14 South Well Site. The containment system will be constructed of a steel-rim berm and lined with a synthetic or engineered liner, mechanically connected to the steel-rim which will surround all primary containment vessels. When used, temporary vessels will have secondary containment constructed from lined earthen berms or pre-engineered, duck-pond style containment systems. All berms and containment devices will be inspected quarterly. (See *Operator Agreement, Exhibit C, BMP No. 40; Site Plan; Notes #2, Best Management Practices Note No. 2.*)
- 13. Cultural and Historical Resource Protection:** Applicant has not discovered any landmark buildings or sites within the disturbance area for the Aspen 3-65 15-14 South. Construction, alteration, removal or demolition of a building or feature or any changes that would impair the cultural or historical association of the landmark building, landmark site or historical district pursuant to those qualities depicted in the City of Aurora Municipal Code will not be made without first obtaining approval. If there is a discovery of historical artifacts at the Aspen 3-65 15-14 South Well Site, the City will be notified. (See *Operator Agreement, Exhibit C, BMP No.47 and Operations Plan.*)
- 14. Discharge Valves:** Open-ended discharge valves on all storage tanks and other containers within the Aspen 3-65 15-14 South Well Site will be secured, capped, or blind- flanged, and so they will not be accessible to the general public. The Applicant will ensure that all open-ended discharge valves within the Well Site are placed within the interior of the secondary containment area. (See *Operator Agreement, Exhibit C, BMP No. 11 and Operations Plan.*)
- 15. Electric Equipment:** Pursuant to the OA, electric equipment is required at sites drilled after June 1, 2020. The Applicant is required to use electric power if electric power is technically and economically feasible as of the date of this application. The applicant plans to use electric power for drilling and facilities at this site pending availability from Xcel Energy. (See *Operator Agreement, Exhibit C, BMP No. 13 and Operations Plan.*)
- 16. Events or Incidents:** In the event of a medical, fire, or explosion incident on the Aspen 3-65 15-14 South Well Site, 911 will be called and local emergency services will be dispatched. Any ECMC reportable safety events or OSHA reportable injuries at the Aspen 3-65 15-14 South Well Site will be reported to the City within 24 hours. (See *Operator Agreement, Exhibit C, BMP No. 37 and Emergency Response Plan.*)
- 17. Emergency Response Plan:** A site-specific Emergency Response Plan (ERP) has been submitted for this site. The Applicant's emergency response will be uniform and will be executed in the format outlined in the ERP for all emergencies. The ERP provides 24-hour contact information for persons responsible for emergency field operations, information on evacuation routes and locations of healthcare facilities and other emergency services. The ERP also provides information on response to emergencies that may include any or all of the following: water pipeline leaks or ruptures. The ERP also provides information on and communication with City emergency personnel. (See *Operator Agreement, Exhibit C, BMP No. 14, and*
- Due to proximity to DIA, there may be specific 911 requirements (e.g., helicopter dispatch, etc.) or please include where in the PHA-HAZOP/EAP/ERP this is located.

18. **Fencing:** Secure, eight (8) foot in height opaque fencing will be installed at the Aspen 3-65 15-14 South Well Site after interim reclamation has been completed.
(See *Operator Agreement, Exhibit C, BMP No. 17 and Site Plan.*)
19. **Flammable Material:** The Aspen 3-65 15-14 South Well Site will be maintained in a manner so to ensure that all ground within twenty-five (25) feet of any tank or other structure containing flammable or combustible materials will be kept free of dry weeds, grass, rubbish or landscaping. (See *Operations Plan and Operator Agreement, Exhibit C, BMP No. 18.*)
20. **Flowlines:** All flowlines (the pipeline connecting the wellhead to the production facility) are contained entirely within the boundary of the well pad. No off-location flowlines as defined and set forth in ECMC Rule 1101, will be utilized. (See *Operations Plan, Operator Agreement, Exhibit C, BMP No. 42 and Site Plan; Notes #11.*)
21. **Fugitive Dust Suppression:** Dust associated with Site activities and traffic on roads will be minimized throughout all phases such that there are no visible dust emissions from sites or roads to the maximum extent practicable given wind conditions. Numerous mitigation measures are in place to minimize dust emissions including (but not limited to): application of fresh water to roads and ground during earth moving activities, curtailment of work during windy conditions and re-establishment of vegetation on disturbed areas that are not graveled. (See *Operations Plan and Operator Agreement, Exhibit C, BMP No. 12, Dust Suppression Plan.*)
22. **General Maintenance:** All equipment will be operated and maintained pursuant to manufacture specifications consistent with technological limitations and reasonable and customary maintenance practices. In addition to automated shutdowns, preventative maintenance and best practices are in place to prevent leaks from vessels. These include (but are not limited to) yearly shut-downs and visual inspections of each 2-phase and 3-phase vessel on site, yearly non-destructive testing of each 2-phase and 3-phase vessel shell and head on site, internal coating to prevent corrosion, weekly environmental checks by operations personnel, non-destructive testing of all water piping, and non-destructive testing of various flowlines to monitor for thin-walled piping caused by erosion or corrosion. (See *Operator Agreement, Exhibit C, BMP No. 35 and Operations Plan.*)
23. **Landscaping:** Landscaping will be performed on the Aspen 3-65 15-14 South once reasonable access to a City water main is within four hundred feet (400') of the Well Site and a residential building unit is constructed within 1,500' of the wellsite. (See *Operations Plan and Operator Agreement, Exhibit C, BMP No. 20, and Site Plan: Landscape Plan Sheet(s).*)
24. **Lighting:** Lighting is only used during the Drilling and Completion Phases of operations. No permanent lighting will be installed. All lighting used will be situated so that it is downcast and does not shine beyond the boundary of the oil and gas operations area. (See *Operations Plan and Operator Agreement, Exhibit C, BMP No. 21 and Lighting Plan, Site Plan; Photometric Sheet(s).*)
25. **Low Profile Tanks:** All tanks installed on the well site will be no taller than sixteen feet (16'). (See *Operations Plan and Operator Agreement, Exhibit C, BMP No. 9, and Site Plan: Production Equipment Representative Table.*)
26. **Maintenance of Machinery:** Routine field maintenance of vehicles and mobile machinery will not be performed within 500 feet of navigable waters of the United States. All fueling will occur over impervious material. The Maintenance Supervisor and all supporting personnel will be responsible for compliance with BMP No. 22. (See *Operator Agreement, Exhibit C, BMP No. 22 and Operations*

Plan.)

27. Mud Tracking: The Applicant will take all practicable measures to ensure that vehicles do not track mud or debris onto City streets. If mud or debris is deposited on City streets the Applicant will clean the streets in a reasonable amount of time, or within 24 hours of notice by the City. If the clean-up cannot be done or is postponed the Applicant will notify the City. Further information may be found in the Operations Plan. This will be accomplished by the Construction Supervisor, Drilling Superintendent, Completions Supervisor and Maintenance Supervisor who understand this requirement, and has the responsibility to ensure their teams will meet this requirement. (See *Operator Agreement, Exhibit C, BMP No. 23 and Operations Plan.*)

28. Noise Management Plan/Noise Mitigation: The Applicant will comply with the sound limitation regulations set forth in the ECMC Rule 423 Noise regulations. Due to the proposed site not being within 2,640' of any (0) Residential Building Units and the site not being depicted on Exhibit A-2 as requiring noise mitigation in the OA neither a baseline or noise mitigation plan is required for this location. Please see the following details of criteria confirming the lack of need for these studies.

Per Section 2.2 of the OA, Applicant is required to conduct a baseline noise study if a New Well is planned within 2,640' of 5 Residential Building Units (RBU) or 1 High Occupancy Building (HOB). There are no (0) RBUs within 2,640' of the Aspen 3-65 15-14 South Well Site, and there are no (0) HOB's within 2,640' of the Aspen 3-65 15-14 South Well Site, so a baseline noise study is not required.

Per Section 2.3 of the OA, Applicant is required to use noise mitigation if a New Well is within the area identified on Exhibit A-2 to the OA or if the New Well is within 1,320' of a RBU or 1,500' of a HOB. There are no (0) RBU's within 1,320' of the Aspen 3-65 15-14 South Well Site, and there are no (0) HOB's within 1,500' of the Aspen 3-65 15-14 South Well Site. The Aspen 3-65 15-14 South Well Site is not located within the area identified on Exhibit A-2 to the OA, so Applicant is not required to use noise mitigation during the Drilling and Completion Phases for the Aspen 3-65 15-14 South Well Site.

Per Section 2.4 of the OA, Applicant may be required to conduct additional noise mitigation for New Wells within 1,320' of an RBU. As stated above, there are no RBU's within 1,320' of the Aspen 3-65 15-14 South Well Site.

Per Section 2.6 of the OA, Applicant is required to address C scale noise/vibration if a New Well is within 1,320' of a RBU or 1,500' of a HOB. As stated above, there are no (0) RBU's within 1,320' of the Aspen 3-65 15-14 South Well Site, and there are no (0) HOB's within 1,500' of the Aspen 3-65 15-14 South Well Site.

Due to the lack of RBUs or HOBs triggering the need for a sound study for this location as stated initially above Applicant did not have a sound study performed.

29. Notifications to the City: (*Regarding Commencement of Operations and Phases of Operations/ Notifications to the City Regarding Commencement of Construction at CGF and Pipeline Operations/Notifications to the City*) The Applicant will notify the City, through the designated City representative, no less than 30 days prior to the commencement of the Construction for the Aspen 3-65 15-14 South (unless the Construction Phase commences within 45 days of the approval of

the applicable Form 2, Form 2A, or local permit), Drilling, or Completion Phases, and 30 days prior to recompleting, re-drilling, or plugging and abandonment of the well. Operator will provide all required notifications under the OA to the City by notifying David Scott by e-mail at DScott@auroragov.org and to Jeffrey Moore by e-mail at jmoore@auroragov.org. (See Operator Agreement, Exhibit C, BMP No. 4.)

- 30. Noxious Weed Control:** All disturbed ground not needed for subsequent operations for Aspen 3-65 15-14 South, including stockpiles and cut and fill slopes, are seeded and mulched in accordance with the permits. Approved weed-free seed mix is used, and these areas are monitored and maintained for weed establishment for the life of the well. (See Operator Agreement, Exhibit C, BMP No. 33, Weed Control Plan and Operations Plan.)
- 31. Odor:** Applicant will mitigate odors by routing to closed loop systems to the maximum extent practicable. If the Applicant receives complaints from a Residential Building within 1,320 feet from the site, Applicant will take measures to mitigate the odor within 24 hours, based on the specific circumstances. Further detail may be found in the Air Quality Plan and Operations Plan provided with this application. (See Operator Agreement, Exhibit C, BMP No. 36, Air Quality Plan and Operations Plan.)
- 32. PHA-Hazard and Operability Study:** The Applicant has provided a letter that the engineer of record has incorporated all applicable PHA-HAZOP recommendations in the design. On January 29, 2018 a PHA-HAZOP was facilitated by Dawn Keeler, a certified facilitator, and conducted by a multi-disciplined team for the Multi-Well Pad Facility with Individual Separation. While the facility design being evaluated does not fall under Process Safety Management (PSM) pursuant to OSHA 29 CFR 1910.119, the HAZOP process was similar. This study consisted of a risk assessment utilizing methodology commonly used while conducting a Process Hazard Analysis. (PHA) with a Layers of Protection Analysis (LOPA). (See Operator Agreement, Exhibit C, BMP No. 44 and PHA- HAZOP Letter.)
- 33. Plugged and Decommissioned Well Testing:** Pursuant to ECMC regulation, an offset well evaluation for the Aspen 3-65 15-14 South will be submitted to the ECMC for review. This evaluation reveals that no (0) Previously Abandoned wells are located within one thousand five hundred feet (1,500') of the proposed well tracts for the New Wells proposed to be drilled from the Aspen 3-65 15-14 South Location. (See Operator Agreement, Exhibit C, BMP No. 43 and Operations Plan.)
- 34. Reclamation:** Because the Aspen 3-65 15-14 South is surrounded by cropland, pursuant to ECMC rule 1003(b.), Interim Reclamation will occur within three months of first production. The Applicant will comply with ECMC Rules 1000 series governing the reclamation of sites. An **Interim Reclamation Plan** has been provided within the Site Plan for this application further detailing site- specific reclamation that will take place following the well(s) being put into production. Additional information regarding Interim reclamation may also be found in the Storm Water Management Plan (SWMP), submitted to the Public Works Department.
A **Final Reclamation Plan** will be submitted to the City concurrently with the Applicant's plugging and abandonment permit submission to the CECMC. Areas reaching substantial completion of grading and topsoil placement operations will be drill seeded and crimp mulched within 14 days of substantial completion of grading and topsoil operations. If an incomplete area is to remain inactive for longer than 30 days, it will be drill seeded and crimp mulched or otherwise landscaped within 14 days from the suspension or completion of land disturbance activities. (See Operator Agreement, Exhibit C, BMP No. 39 and Operations Plan.)
- 35. Reduced Emission Completions (Commonly known as Green Completions):** The Applicant will comply with the EPA Reduced Emission Completions rules (under 40 CFR 60 Subpart OOOO and

OOOOa) for oil and gas wells. The Applicant will apply best management practices to safely maximize program and is committed to reducing emissions from flaring and venting. For resource recovery and minimize releases to the environment. Applicant was an early adopter of reduced emissions completions (green completions), a charter member of the Natural Gas Star all projects in the City including the Aspen 3-65 15-14 South project, we plan to have a oil and gas pipeline installed and ready to accept oil and natural gas production immediately after initial flowback of wells on this site. Further detail may be found in the Operations Plan and the Air Quality Plan provided with this application. *(See Operator Agreement, Exhibit C, BMP No. 16, Operations Plan and Air Quality Plan)*

36. **Removal of Debris:** The Applicant will ensure that all construction-related debris is removed from the Well Site for proper disposal in a timely manner. The Applicant will ensure that Well Site is reasonably free of debris and excess materials at all times during all phases of operations. Applicant shall not stockpile debris at the Well Sites. *(See Operator Agreement, Exhibit C, BMP No. 24 and Operations Plan.)*
37. **Removal of Equipment:** At the end of the flowback stage of development (the beginning of the Production Phase), all temporary equipment will be removed from the Aspen 3-65 15-14 South site (within 30 days), leaving only the wellhead(s) and the permanent production facilities, including, separators, storage tanks and emissions control equipment. No permanent storage of removable equipment will occur on any well site. *(See Operator Agreement, Exhibit C, BMP No. 25 and Operations Plan.)*
38. **Road Repairs:** Road repairs will be addressed pursuant to the terms of Road Maintenance Agreement (RMA) executed January 3, 2018, and included with this submission. An amendment to the RMA was executed by the city and ConocoPhillips December 18, 2019, and subsequently assigned to Crestone Peak Resources. Pursuant to the RMA, the Applicant has agreed to pay traffic impact fees in lieu of road repair maintenance for the life of the well. The Applicant and the City have agreed that the Applicant will pay an initial fee of \$9,000 per well for traffic impact fees. *(See Operator Agreement, Exhibit C, BMP No. 29, Operations Plan and Road Maintenance Agreement.)*
39. **Spills:** The Applicant will notify the City of any spill of materials on permeable ground at Aspen 3-65 15-14 South Well Site that has a reportable quantity under any applicable laws. Applicant will provide a copy of the self-reporting submissions that the Applicant provides to the ECOM due to any spill on the Well Site. *(See Operator Agreement, Exhibit C, BMP No. 38 and Operations Plan.)*
40. **Stormwater Management:** The Applicant will not begin construction of the Aspen 3-65 15-14 South Well Site until a Stormwater Water Management Plan (SWMP) is approved by the City and a stormwater quality discharge permit has been acquired for the Well Site. The Applicant will perform monthly inspections of stormwater BMPs, or after a storm event. Further detail may be found in the SWMP provided with this application. *(See Operator Agreement, Exhibit C, BMP No. 30, Operations Plan and Stormwater Management Plan.)*
41. **Trailers:** The Applicant will not place any permanent trailers on the Aspen 3-65 15-14 South Well Site. The Applicant will have temporary construction trailers on site during the Construction, Drilling and Completion phases of development and up to 6 months following the Completions phase of development. *(See Operator Agreement, Exhibit C, BMP No. 26, Operations Plan, and Site Plan (Drilling sheet).)*
42. **Transportation and Circulation:** The Applicant has provided the Traffic Management Plan/Traffic Letter with this application. The Aspen 3-65 15-14 South haul route is depicted on the Haul Route Sheet of the site plan. *(See Operator Agreement, Exhibit C, BMP No. 27 and Road Maintenance Agreement.)*

- 43. Transportation and Storage of Fluids:** The Applicant will utilize pipelines for the transportation of hydrocarbons for the Aspen 3-65 15-14 South. Non-potable water used for hydraulic fracturing will be transported by above-ground water supply line, typically 12" in diameter and typically made of synthetic rubber or similar "hose" material. They are used for the transfer of water from an identified water source to support company's hydraulic fracturing operations. Permanent tanks will be used for storage and transportation of produced water, and for storage of oil under downtime due to third parties. All third-party trucking operations will be subject to the Applicant's HSE policies and procedures. (See *Operator Agreement, Exhibit C, BMP No. 3, Site Plan (Operations Plan page), and the Water Delivery Method.*)
- 44. Tree Mitigation:** There are no trees required to be removed at the Aspen 3-65 15-14 South Well Site. (See *Operator Agreement, Exhibit C, BMP No. 10, and Operations Plan.*)
- 45. Visual Mitigation:** Operator Agreement, Exhibit C, BMP No. 49 applies to four specific Well Sites, the Aspen 3-65 15-14 South is not one of these Well Sites. (See *Operator Agreement, Exhibit C, BMP No. 49.*)
- 46. Wastewater and Waste Management:** All fluids and waste will be contained and disposed of at licensed disposal or recycling facilities outside of the City. (See *Operator Agreement, Exhibit C, BMP No. 31, Waste Management Plan and the SPCC Plan attached as an appendix thereto, and Operations Plan.*)
- 47. Water Protection Requirements:** Identification of sensitive water resources begins in the pre-development planning stage of the project. The proximity of wells to existing City infrastructure is depicted on the Adjacent Visible Improvements sheet of the Site Plan. BMP No. 48 describes that all new wells will be located a minimum of 500' from City Infrastructure unless vibratory studies confirm that no negative impacts occur to the City Infrastructure, in this case the wells may be setback 350' from City Infrastructure. The results of a vibratory study were provided to the City of Aurora Water Department, and it was confirmed that a 350' setback was acceptable. See *Operator Agreement, Exhibit C, BMP No. 48 and Operations Plan.*)
- 48. Water Quality Monitoring Plan/Groundwater Pollution Mitigation:**
The Applicant will sample existing water wells prior to drilling activities and will continue to sample existing or installed wells through the Production Phase, until final Reclamation Phase is completed for the well site to ensure that groundwater has not been contaminated by the Applicant's activity. As the well is constructed, concentric layers of steel casing and cement form the barrier to protect groundwater resources from the contents that will later flow inside the well mitigating any potential pollution for groundwater pollution. The depth of the casing will extend to the deepest known depth of the freshwater aquifers. Surface casing is set at +/-2600 ft TVD and cemented to surface. The production casing is a long string and is cemented to 200 ft inside the surface casing by design. If needed during the Drilling Phase, Applicant shall run temperature or cement log if surface casing cement is not circulated to the surface to ensure integrity. Completion well preparation tests production casing to 9800 psi before opening toe sleeve or perforating toe. If pressure test is unsuccessful (i.e., the toe valve leaks) a plug is deployed to test to 9800 psi as deep as the plug will go on wireline. During the production phase the Applicant will monitor casing pressures using pressure transmitters in the surface. Bradenhead testing will be performed during the completions phase with ECMC staff onsite. (See *Operator Agreement, Exhibit C, BMP No. 46, Fieldwide Water Quality Monitoring Plan, Site Specific Water Quality Monitor location on the Site Plan and Operations Plan.*)

49. Water Supply: Pursuant to the terms of the Agreement for Delivery of Reusable Raw Water effective September 26, 2017 between the City of Aurora and ConocoPhillips Company, that was subsequently assigned to Crestone Peak Resources Operating LLC, the Applicant will take delivery from the City of water to be used during the Drilling, Completions, and Production Phases of development. Further details may be found within the Agreement for Delivery of Reusable Raw Water and in the Water Delivery Method. The Operator has a site- specific Water Delivery Plan and Method that has been provided to the City with this application. The applicant will use temporary, above-ground water supply lines (“Lay Flat Lines”) that are typically 12” in diameter and made of synthetic rubber or similar “hose” material. They are used for the transfer of water from an identified water source to support hydraulic fracturing operations. The source of ground water used for operations on this project is Pure Cycle. This agreement was executed on September 13, 2023. The source of surface water used for operation is from Farmers Reservoir and Irrigation Company through an agreement executed June 19, 2023. *(See Operator Agreement, Exhibit C, BMP No. 32, Agreement for Delivery of Reusable Raw Water effective September 26, 2017 between the City of Aurora and ConocoPhillips Company, and Operations Plan.)*

NEIGHBORHOOD MEETING RESULTS

Will be provided following Neighborhood Meeting

TYPICAL PHOTOS



AURORA COLORADO OIL & GAS OPERATIONS
DRILLING RIG



10333 E. Dry Creek Rd
Suite 24
Englewood, CO 80111
Tel: (720) 482-952
Fax: (720) 482-954



AURORA COLORADO OIL & GAS OPERATIONS
DRILLING RIG WITH AUTOMATIC PIPE HANDLING



10333 E. Dry Creek Rd.
Suite 240
Englewood, CO 80112
Tel: (720)482-9526
Fax: (720)482-9546



AURORA COLORADO OIL & GAS OPERATIONS
DIESEL FUEL AND GENERATORS WITH SECONDARY CONTAINMENT



10333 E. Dry Creek Rd.
Suite 240
Englewood, CO 80112
Tel: (720)482-9526
Fax: (720)482-9546



AURORA COLORADO OIL & GAS OPERATIONS
MATERIALS STORAGE WITH SECONDARY CONTAINMENT



10333 E. Dry Creek Rd.
Suite 240
Englewood, CO 80112
Tel: (720)482-9526
Fax: (720)482-9546



AURORA COLORADO OIL & GAS OPERATIONS
PIPE STORAGE RACK



AURORA COLORADO OIL & GAS OPERATIONS
OFFICES & TEMPORARY LIVING QUARTERS



10333 E. Dry Creek Rd.
Suite 240
Englewood, CO 80112
Tel: (720)482-9526
Fax: (720)482-9546



SAND CASTLES AND TRUCKS

TRUCKS AND PUMPS



AURORA COLORADO OIL & GAS OPERATIONS
COMPLETION SITE



10333 E. Dry Creek Rd.
Suite 240
Englewood, CO 80112
Tel: (720)482-9526
Fax: (720)482-9546



AURORA COLORADO OIL & GAS OPERATIONS
TEMPORARY SOUND MITIGATION WALLS



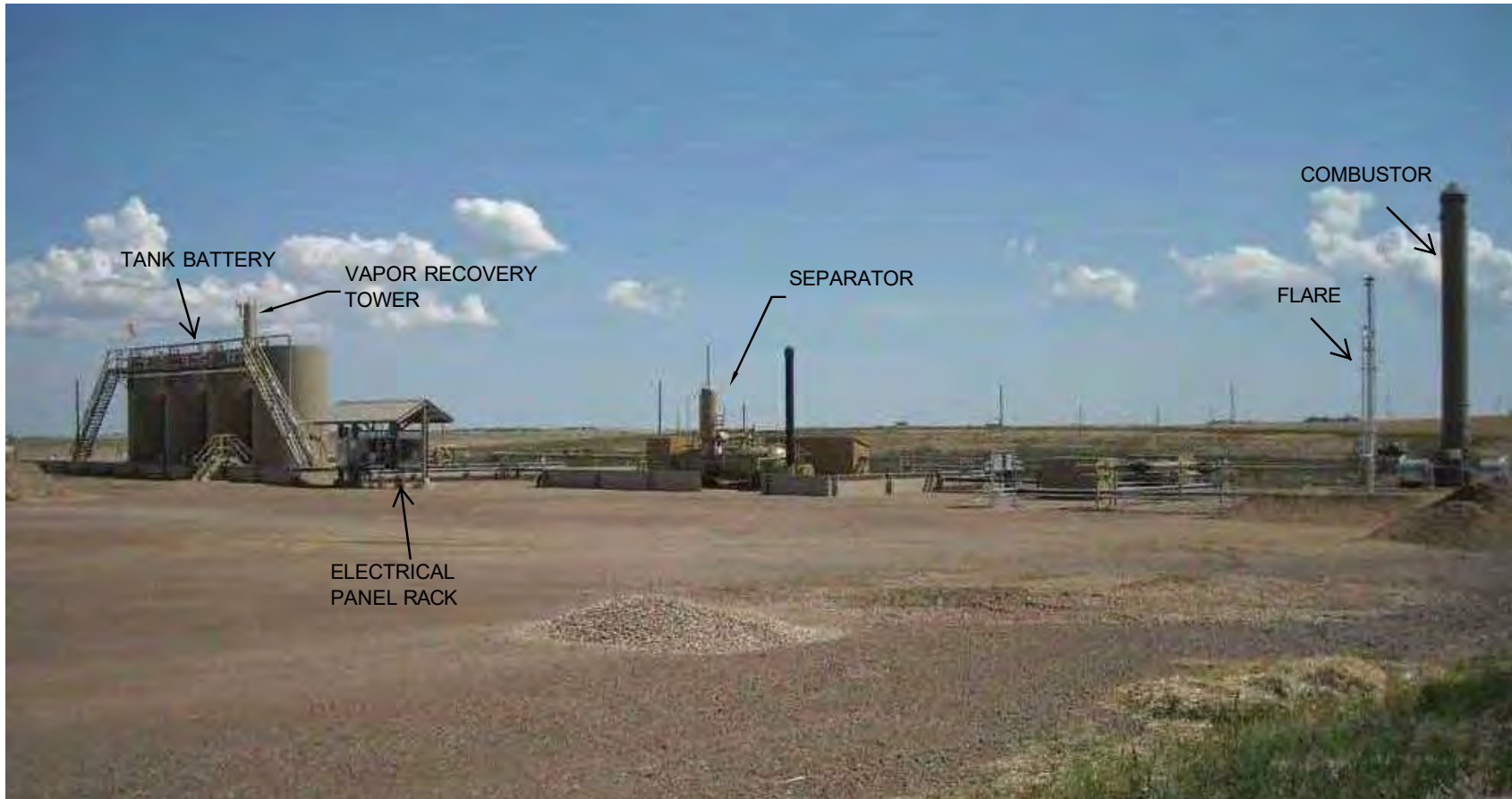
10333 E. Dry Creek Rd.
Suite 240
Englewood, CO 80112
Tel: (720)482-9526
Fax: (720)482-9546



AURORA COLORADO OIL & GAS OPERATIONS
MOBILE TORNADO SHELTER



10333 E. Dry Creek Rd.
Suite 240
Englewood, CO 80112
Tel: (720)482-9526
Fax: (720)482-9546



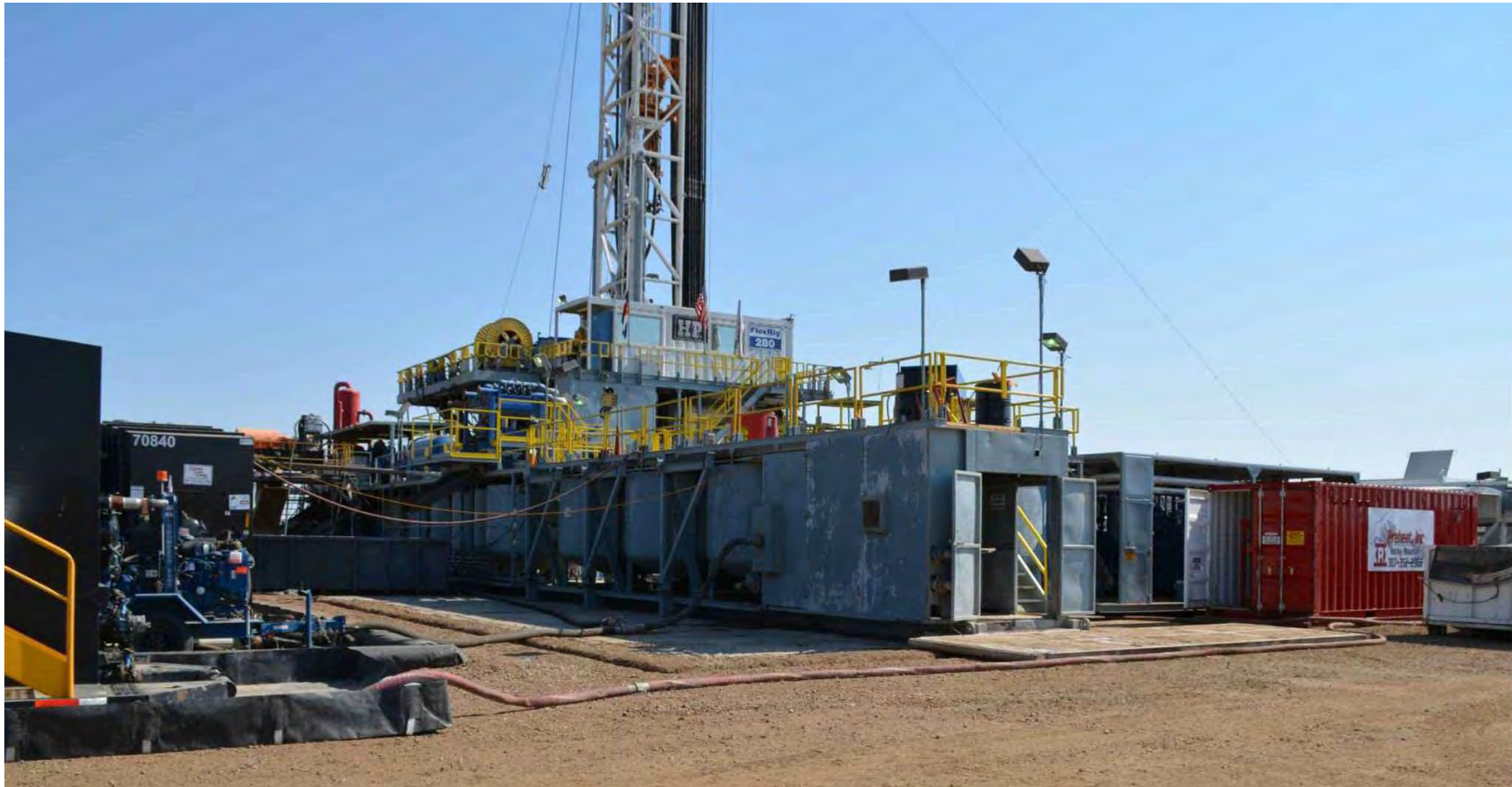
AURORA COLORADO OIL & GAS OPERATIONS
PRODUCTION FACILITY





AURORA COLORADO OIL & GAS OPERATIONS
WORKOVER RIG-PRODUCTION SETTING





AURORA COLORADO OIL & GAS OPERATIONS
CLOSED LOOP DRILLING SYSTEM (MUD TANKS)



10333 E. Dry Creek Rd.
Suite 240
Englewood, CO 80112
Tel: (720)482-9526
Fax: (720)482-9546



AURORA COLORADO OIL & GAS OPERATIONS
SIGNAGE



10333 E. Dry Creek Rd.
Suite 240
Englewood, CO 80112
Tel: (720)482-9526
Fax: (720)482-9546

PLAT PACKAGE

T3S

16

15

5500

5450

T3S R65W

PROPOSED ACCESS 678' +/-

MONAGHAN ROAD

**PROPOSED LOCATION:
ASPEN 3-65 15-14 SOUTH PAD**

**2,000' OFFSET
FROM PROPOSED
ACCESS ROAD**

22x

22

**R
65
W**

NOTES:

- There are no RBU's within 2,000' of the proposed access road.

REV: 2 04-16-24 D.J.G. (ADD OIL & GAS LOCATION)

PROPOSED ACCESS 678' +/-

16

15

T3S R65W

MONAGHAN ROAD

**2,000' OFFSET
FROM PROPOSED
ACCESS ROAD**







NOTES:

- There are no RBU's within 2,000' of the proposed access road.



REV: 2 04-16-24 D.J.G. (ADD OIL & GAS LOCATION)

LEGEND:

-
-  **WORKING PAD SURFACE**  **INSTALL 12' GATE**
 **EXISTING ROAD**
 **PROPOSED ACCESS ROAD**
 OIL & GAS LOCATION
 **PROPOSED FENCE**
 **INSTALL 24" CULVERT**



**CRESTONE PEAK
RESOURCES OPERATING LLC**

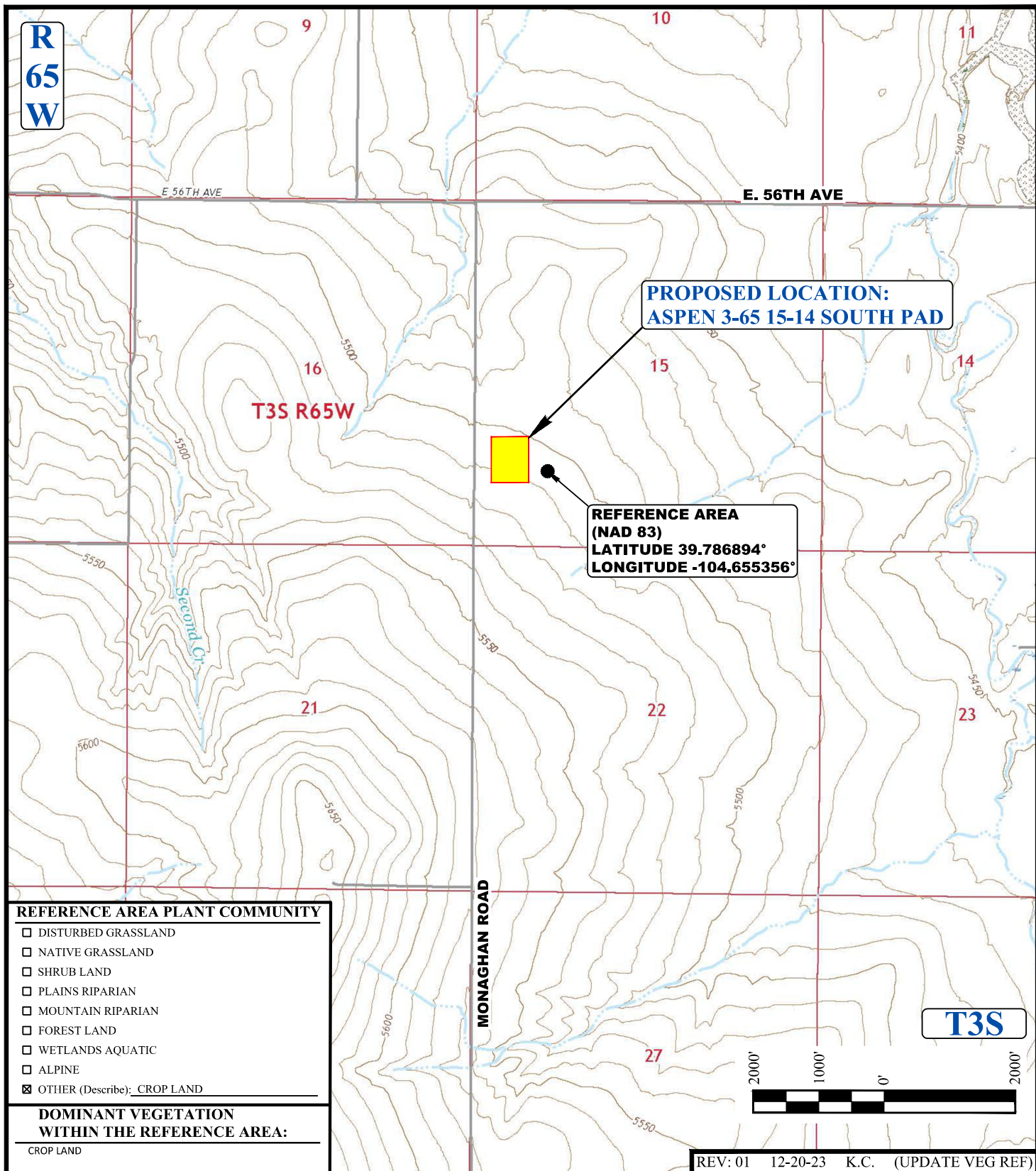
**ASPEN 3-65 15-14 SOUTH PAD
W 1/2 SW 1/4, SECTION 15, T3S, R65W, 6th P.M.
ADAMS COUNTY, COLORADO**

SURVEYED BY	O.R.	11-23-21	SCALE
DRAWN BY	M.D.	02-08-22	1 : 12,000

ACCESS ROAD MAP



UELS, LLC
Corporate Office * 85 South 200 East
Vernal, UT 84078 * (435) 789-1017



LEGEND:

WORKING PAD SURFACE



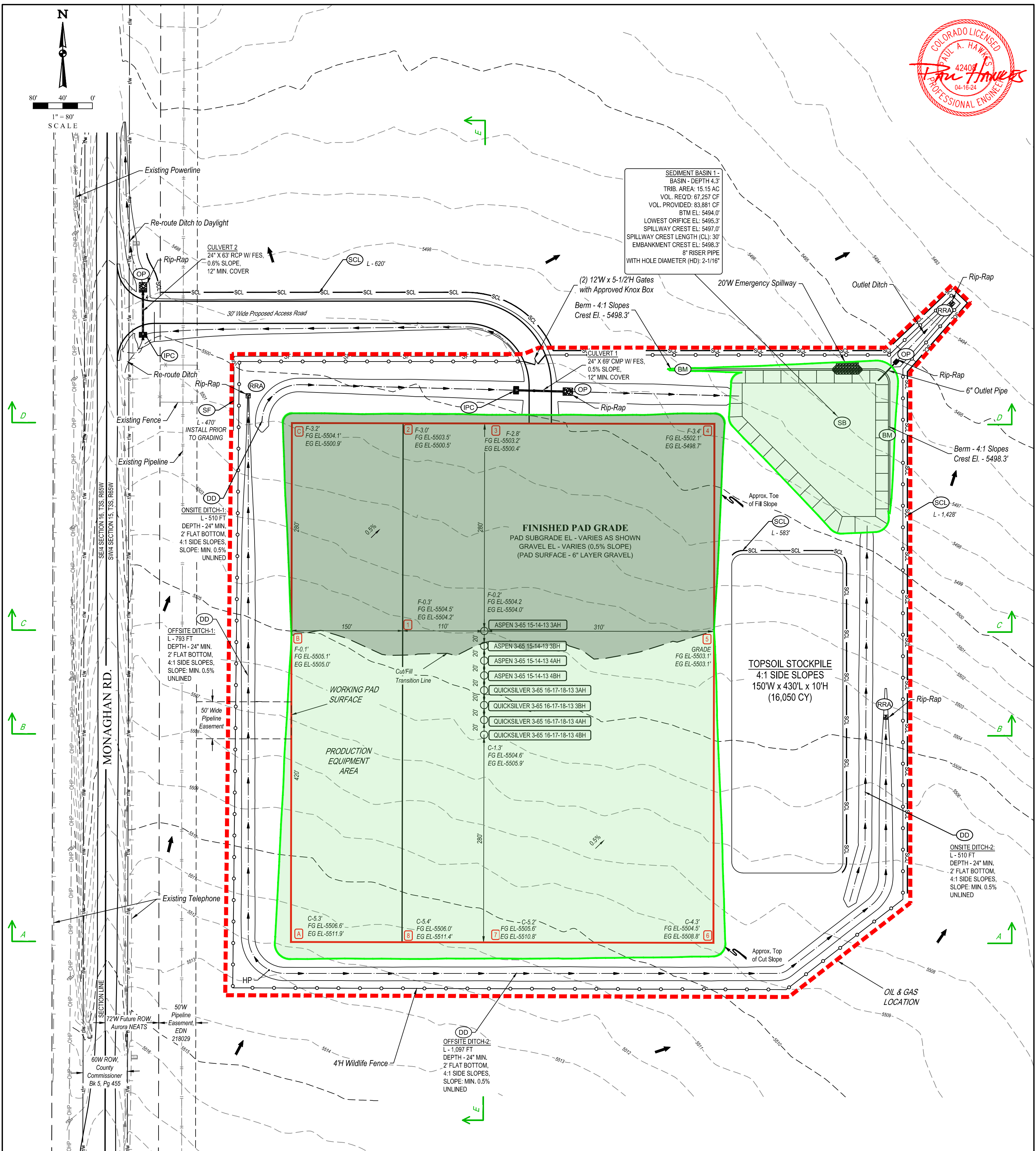
UELS, LLC
Corporate Office * 85 South 200 East
Vernal, UT 84078 * (435) 789-1017



CRESTONE PEAK RESOURCES OPERATING LLC

ASPEN 3-65 15-14 SOUTH PAD
W 1/2 SW 1/4, SECTION 15, T3S, R65W, 6th P.M.
ADAMS COUNTY, COLORADO

SURVEYED BY	G.W.	12-20-23	SCALE
DRAWN BY	K.C.	11-16-23	1 : 24,000
REFERENCE AREA MAP		REF TOPO	



LEGEND		LEGEND		LEGEND	
HP	HIGH POINT ELEVATION	OP	OUTLET PROTECTION	PROPOSED WILDLIFE FENCE	
F-8.1'	WELL PAD CORNER STAKE DESIGN "C" CUT OR "F" FILL AT CORNER STAKE	SB	SEDIMENT BASIN	PROPOSED PIPELINE	
EG EL-5552.1'	EXISTING GROUND ELEV. AT CORNER STAKE	SCL	SEDIMENT CONTROL LOG	EXISTING PIPELINE	
FG EL-5512.9'	FINISHED GROUND ELEV. AT CORNER STAKE	BM	BERM	EXISTING FENCE	
DD	DIVERSION DITCH	SF	SILT FENCE	EXISTING TELEPHONE	
IPC	RRB FOR CULVERT PROTECTION			EXISTING R-O-W	
RRA	RIP-RAP APRON			FUTURE R-O-W	
				EXISTING OVERHEAD POWER	
				EXISTING MAJOR CONTOUR	
				EXISTING MINOR CONTOUR	
				PIPELINE EASMENT	

WORKING PAD SURFACE DISTURBANCE = 9.16 ACRES
DISTURBANCE DURING CONSTRUCTION = 9.10 ACRES
TOTAL OIL & GAS LOCATION = 18.26 ACRES

REV: 02 04-16-24 D.J.G. (UPDATE TOPSOIL STRIPPING)

CRESTONE PEAK RESOURCES OPERATING LLC

ASPEN 3-65 15-14 SOUTH PAD
W 1/2 SW 1/4, SECTION 15, T3S, R65W, 6th P.M.
ADAMS COUNTY, COLORADO

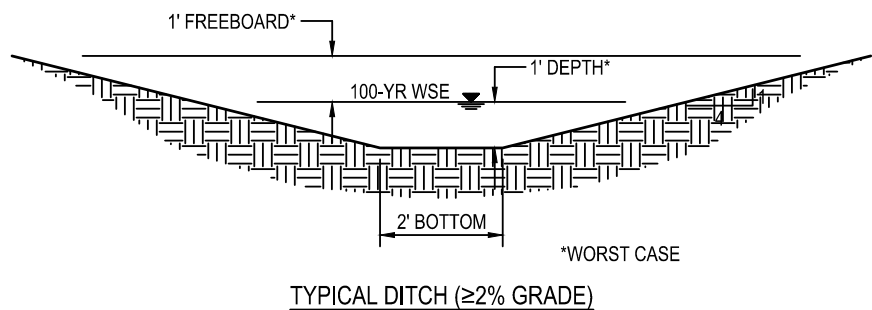
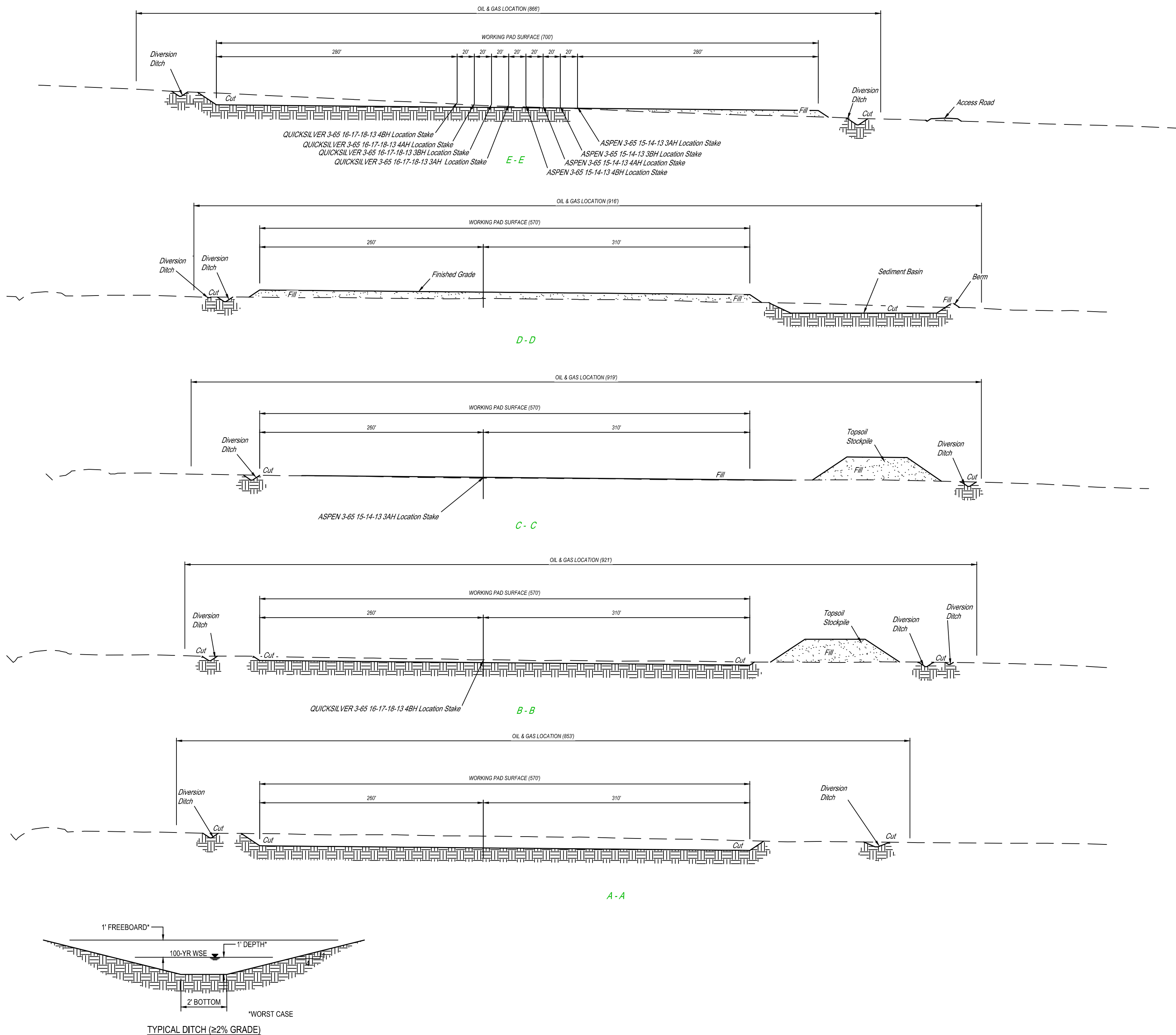
SURVEYED BY	ORION RICE, N.W.	11-23-21	SCALE
DRAWN BY	M.D.	02-08-22	1" = 80'

CONSTRUCTION LAYOUT - PLAN VIEW

UELS, LLC
Corporate Office * 85 South 200 East
Vernal, UT 84078 * (435) 789-1017

NOTE: Earthwork calculations require a fill @ some of the location stakes for balance. All fill is to be compacted to a minimum of 95% of the maximum dry density obtained by AASHTO method T-99.

1" = 30'
X-Section
Scale
1" = 80'



APPROXIMATE EARTHWORK QUANTITIES	
(11") TOPSOIL STRIPPING	16,050 Cu. Yds.
WELL PAD CUT	14,570 Cu. Yds.
ACCESS ROAD CUT	60 Cu. Yds.
DITCH & SED BASIN CUT	6,580 Cu. Yds.
TOTAL CUT	37,260 Cu. Yds.
WELL PAD FILL	19,430 Cu. Yds.
ACCESS ROAD FILL	1,520 Cu. Yds.
DITCH & SED BASIN FILL	260 Cu. Yds.
TOTAL FILL	21,210 Cu. Yds.
EXCESS MATERIAL	16,050 Cu. Yds.
TOPSOIL	16,050 Cu. Yds.
DEFICIT UNBALANCE	0 Cu. Yds.
GRAVEL BASE ON PAD (6")	7,390 Cu. Yds.

APPROXIMATE WELL SITE DISTURBANCE AREAS	
WORKING PAD SURFACE DISTURBANCE	±9.16 ACRES
CONSTRUCTION DISTURBANCE	±9.10
TOTAL OIL & GAS LOCATION	±18.26

APPROXIMATE SURFACE DISTURBANCE AREAS		
	DISTANCE	ACRES
WELL SITE DISTURBANCE	NA	±18.26
ACCESS ROAD DISTURBANCE	±678'	±1.05
TOTAL SURFACE USE AREA		±19.31

- NOTES:
- Fill quantity includes 10% for compaction.
 - Calculations based on 11" of topsoil stripping.
 - Cut/Fill slopes 4:1 (Typ.).



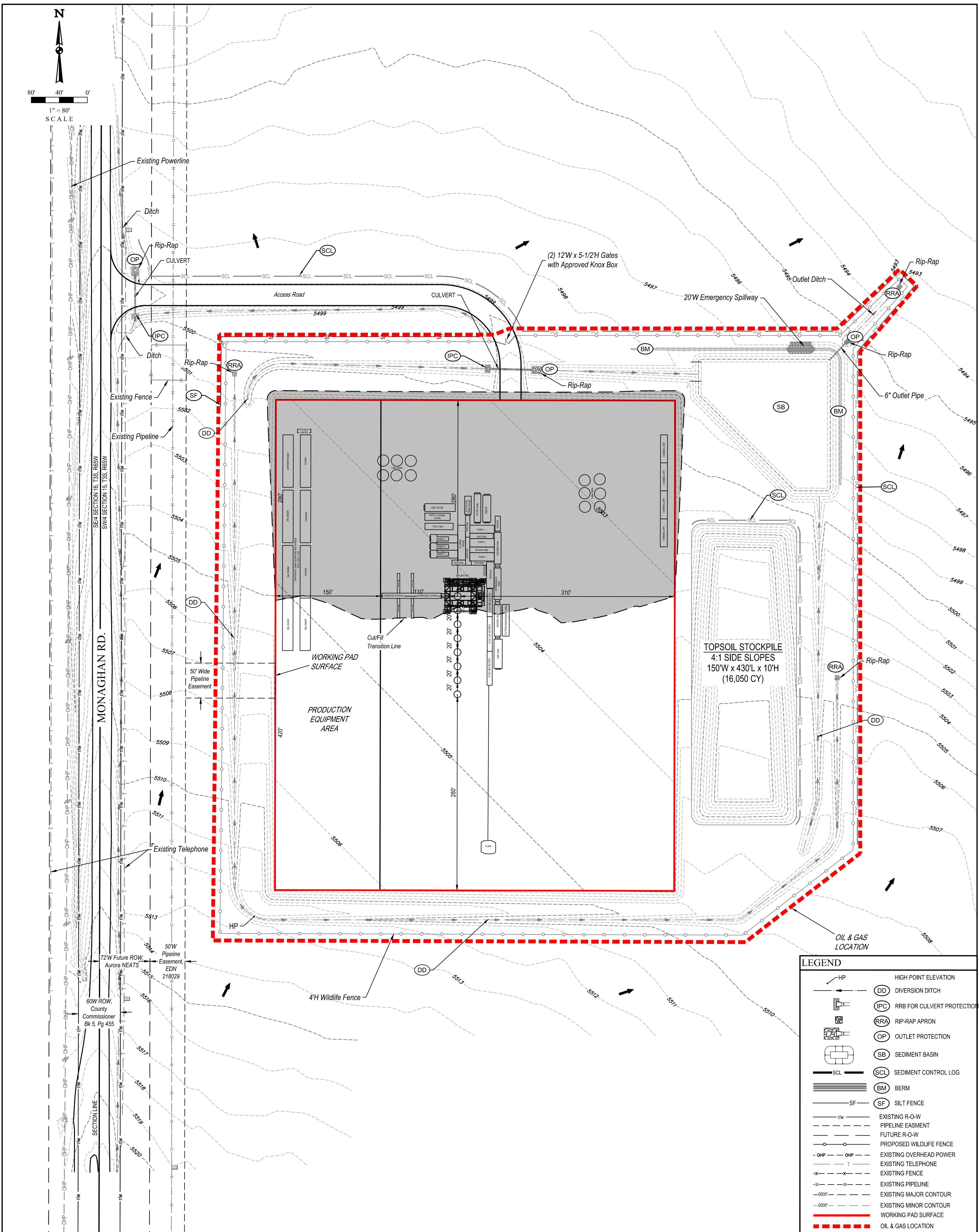
UELS, LLC
Corporate Office * 85 South 200 East
Vernal, UT 84078 * (435) 789-1017

REV: 02 04-16-24 D.J.G. (CORRECT ACCESS DISTANCE)

CRESTONE PEAK RESOURCES OPERATING LLC

ASPEN 3-65 15-14 SOUTH PAD
W 1/2 SW 1/4, SECTION 15, T3S, R65W, 6th P.M.
ADAMS COUNTY, COLORADO

SURVEYED BY	ORION RICE, N.W.	11-23-21	SCALE
DRAWN BY	M.D.	02-08-22	AS SHOWN
CONSTRUCTION LAYOUT - CROSS SECTIONS			



NOTES:

- Contours shown at 1' intervals.
- Overall working pad surface = 700' x 570'

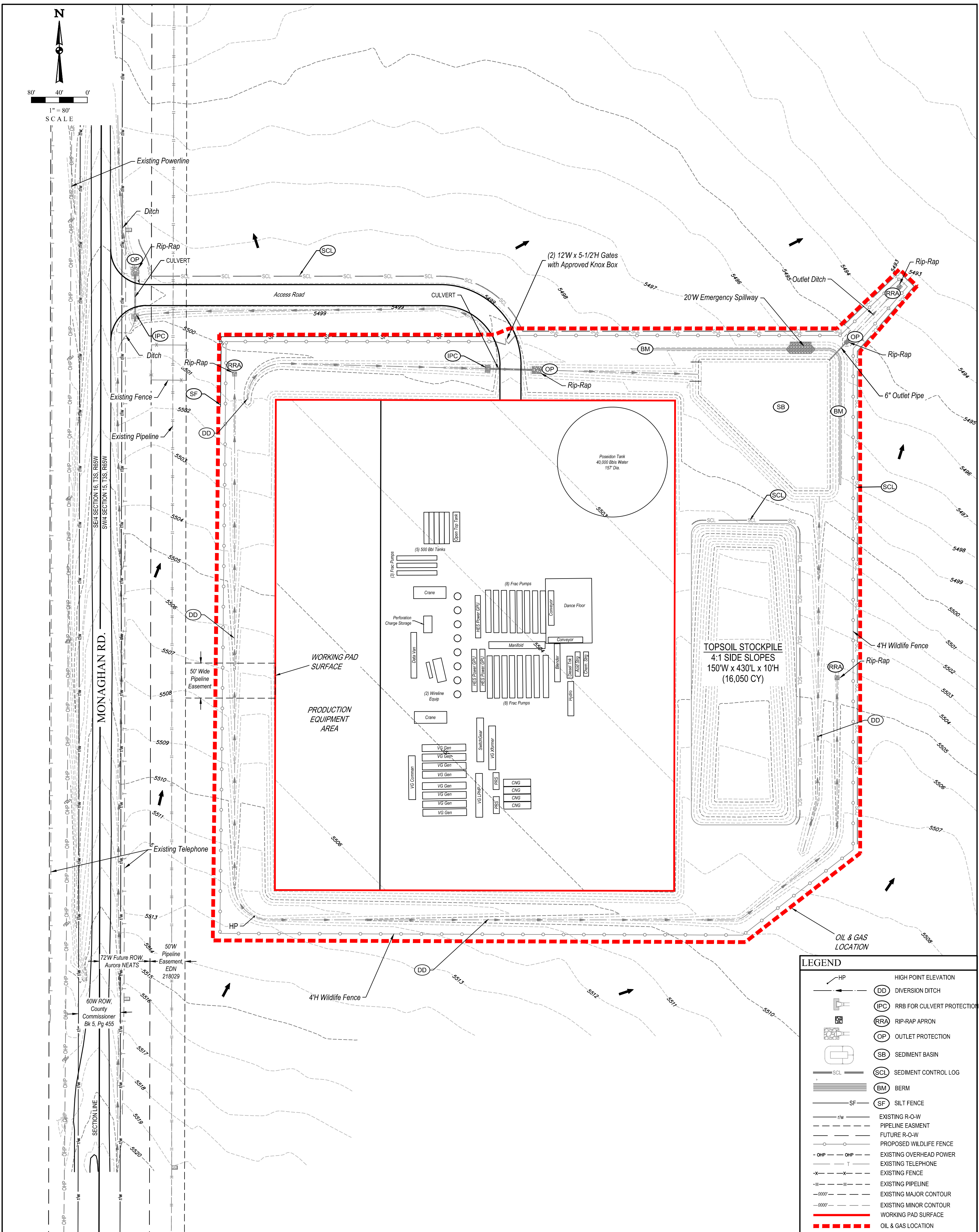
UETS, LLC
 Corporate Office * 85 South 200 East
 Vernal, UT 84078 * (435) 789-1017

CRESTONE PEAK RESOURCES OPERATING LLC

ASPEN 3-65 15-14 SOUTH PAD
W 1/2 SW 1/4, SECTION 15, T3S, R65W, 6th P.M.
ADAMS COUNTY, COLORADO

SURVEYED BY	ORION RICE, N.W.	11-23-21	SCALE
DRAWN BY	M.D.	02-08-22	1" = 80'
PRELIMINARY DRILL RIG LAYOUT			

REV: 02 04-16-24 D.J.G. (ADDED PIPELINE EASEMENT)



NOTES:
• Contours shown at 1' intervals.
• Overall working pad surface = 700' x 570'

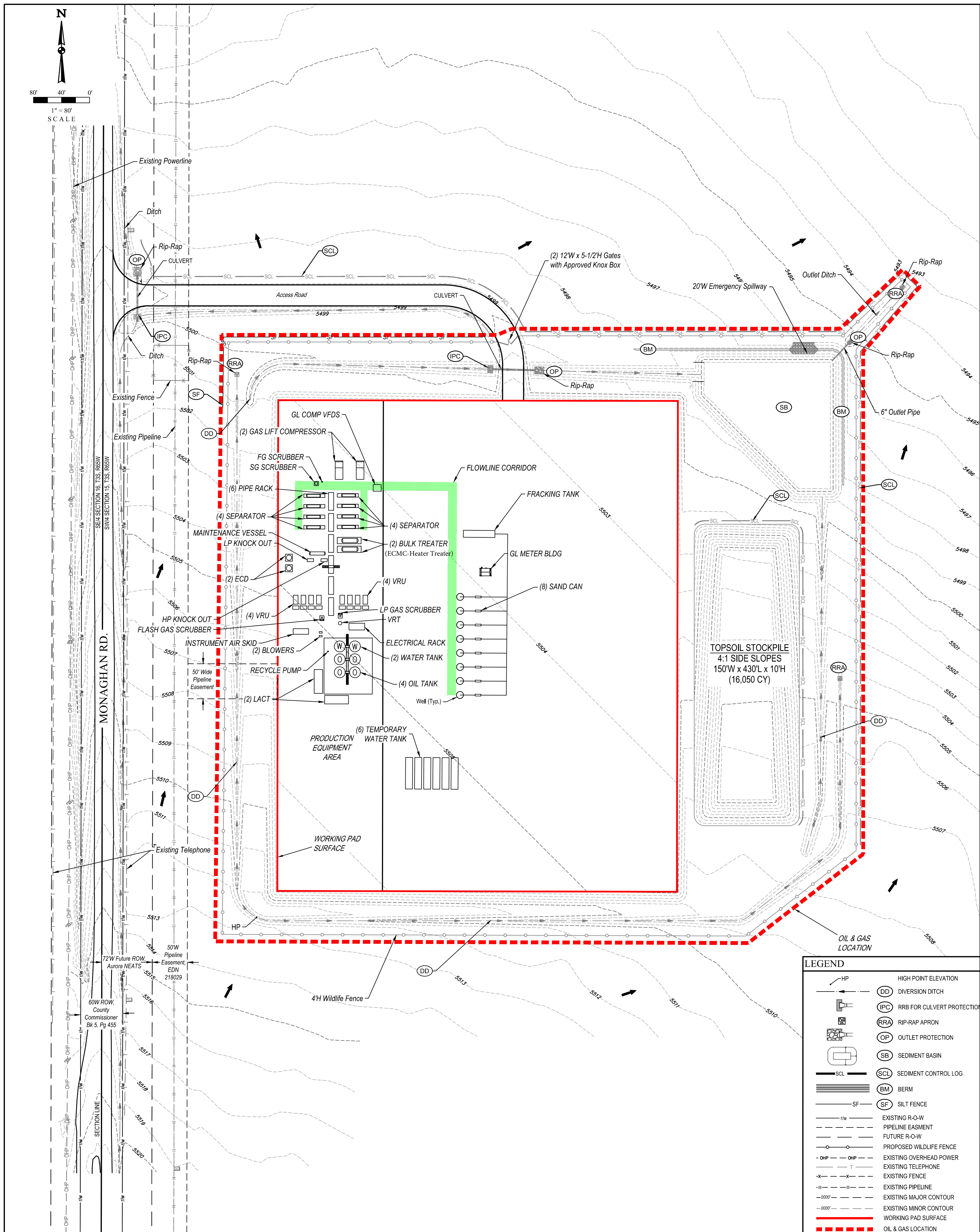
CRESTONE PEAK RESOURCES OPERATING LLC

ASPEN 3-65 15-14 SOUTH PAD
W 1/2 SW 1/4, SECTION 15, T3S, R65W, 6th P.M.
ADAMS COUNTY, COLORADO

UELS, LLC
Corporate Office * 85 South 200 East
Vernal, UT 84078 * (435) 789-1017

SURVEYED BY	ORION RICE, N.W.	11-23-21	SCALE
DRAWN BY	M.D.	02-08-22	1" = 80'
PRELIMINARY WELL COMPLETION & STIMULATION LAYOUT			

REV: 02 04-16-24 D.J.G. (ADDED PIPELINE EASEMENT)



NOTES:

- Contours shown at 1' intervals.
- Overall working pad surface = 700' x 570'

CRESTONE PEAK RESOURCES OPERATING LLC

ASPEN 3-65 15-14 SOUTH PAD
W 1/2 SW 1/4, SECTION 15, T3S, R65W, 6th P.M.
ADAMS COUNTY, COLORADO

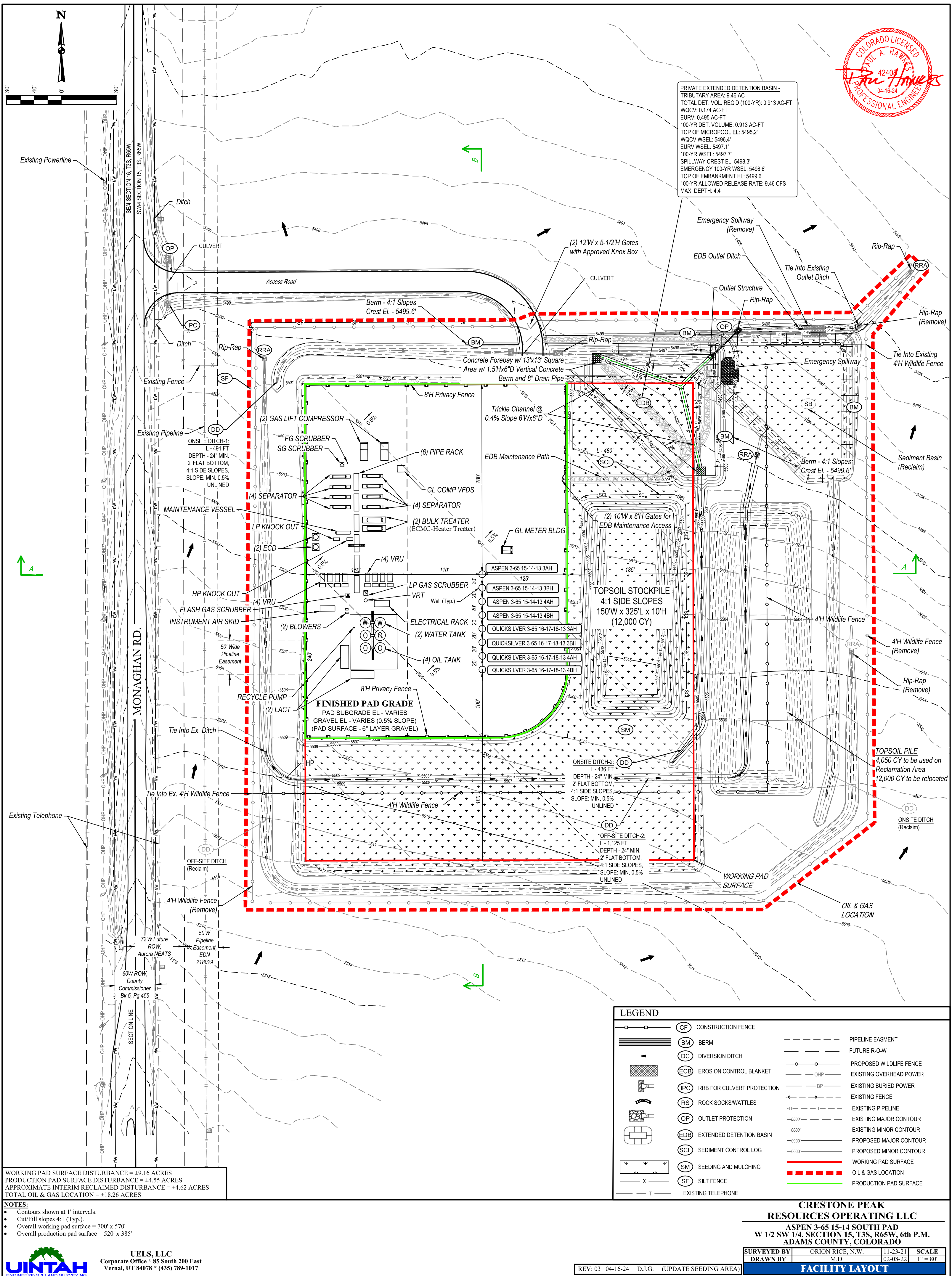


UELLS, LLC
Corporate Office * 85 South 200 East
Vernal, UT 84078 * (435) 789-1017

REV: 03 04-16-24 D.J.G. (ADDED PIPELINE EASEMENT)

SURVEYED BY	ORION RICE, N.W.	11-23-21	SCALE
DRAWN BY	M.D.	02-08-22	1" = 80'

PRELIMINARY FLOWBACK EQUIPMENT LAYOUT



PRIVATE EXTENDED DETENTION BASIN -
TRIBUTARY AREA: 9.46 AC
TOTAL DET. VOL. REQ'D (100-YR): 0.913 AC-FT
WQCV: 0.174 AC-FT
EURV: 0.495 AC-FT
100-YR DET. VOLUME: 0.913 AC-FT
TOP OF MICROPOL EL.: 5495.2'
WQCV WSEL: 5496.4'
EURV WSEL: 5497.1'
100-YR WSEL: 5497.7'
SPILLWAY CREST EL.: 5498.3'
EMERGENCY 100-YR WSEL: 5498.6'
TOP OF EMBANKMENT EL.: 5499.6'
100-YR ALLOWED RELEASE RATE: 9.46 CFS
MAX. DEPTH: 4.4'



LEGEND		
	CF	CONSTRUCTION FENCE
	BM	BERM
	DC	DIVERSION DITCH
	ECB	EROSION CONTROL BLANKET
	IPC	RRB FOR CULVERT PROTECTION
	RS	ROCK SOCKS/WATTLES
	OP	OUTLET PROTECTION
	EDB	EXTENDED DETENTION BASIN
	SCL	SEDIMENT CONTROL LOG
	SM	SEEDING AND MULCHING
	SF	SILT FENCE
	T	EXISTING TELEPHONE
		PIPELINE EASEMENT
		FUTURE R.O.W.
		PROPOSED WILDLIFE FENCE
	OHP	EXISTING OVERHEAD POWER
	BP	EXISTING BURIED POWER
	X	EXISTING FENCE
		EXISTING PIPELINE
	-0000-	EXISTING MAJOR CONTOUR
	-0000'	EXISTING MINOR CONTOUR
	-0000'	PROPOSED MAJOR CONTOUR
	-0000'	PROPOSED MINOR CONTOUR
		WORKING PAD SURFACE
		OIL & GAS LOCATION
		PRODUCTION PAD SURFACE

WORKING PAD SURFACE DISTURBANCE = ±9.16 ACRES
PRODUCTION PAD SURFACE DISTURBANCE = ±4.55 ACRES
APPROXIMATE INTERIM RECLAIMED DISTURBANCE = ±4.62 ACRES
TOTAL OIL & GAS LOCATION = ±18.26 ACRES

- NOTES:
- Contours shown at 1' intervals.
 - Cut/Fill slopes 4:1 (Typ.).
 - Overall working pad surface = 700' x 570'
 - Overall production pad surface = 520' x 385'



UETLS, LLC
Corporate Office * 85 South 200 East
Vernal, UT 84078 * (435) 789-1017

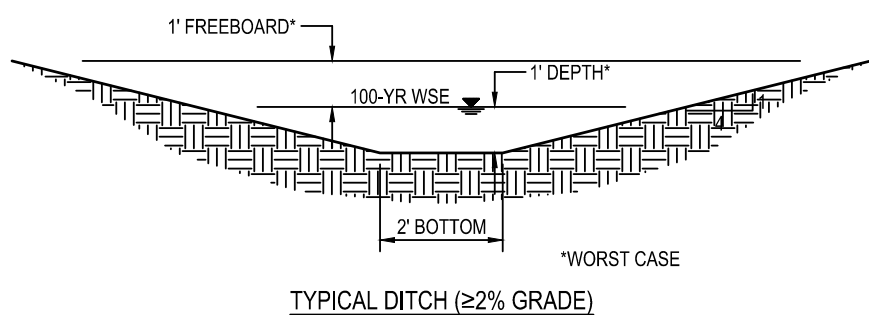
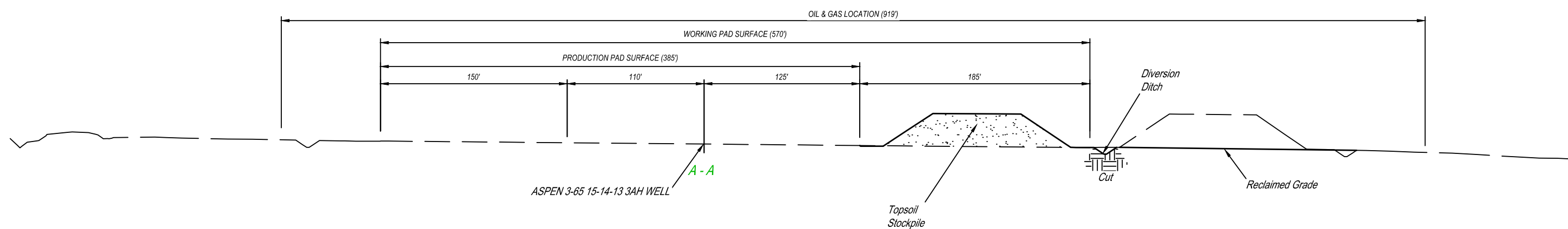
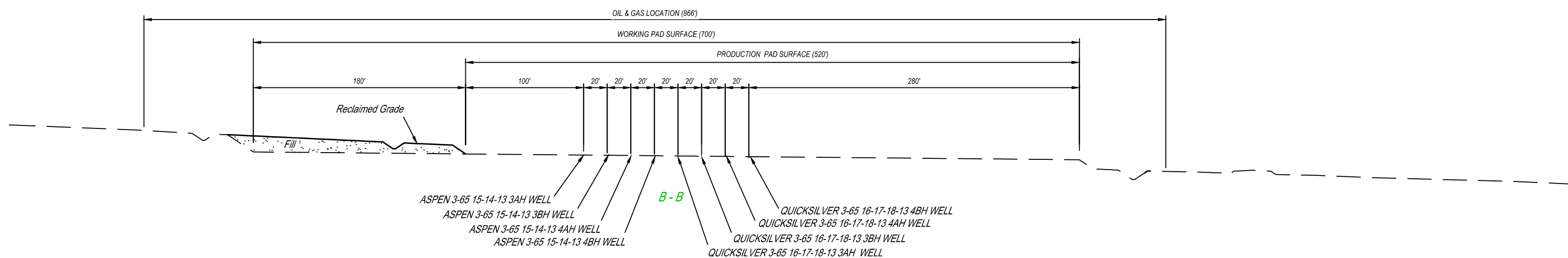
CRESTONE PEAK
RESOURCES OPERATING LLC
ASPEN 3-65 15-14 SOUTH PAD
W 1/2 SW 1/4, SECTION 15, T3S, R65W, 6th P.M.
ADAMS COUNTY, COLORADO

SURVEYED BY	ORION RICE, N.W.	11-23-21	SCALE
DRAWN BY	M.D.	02-08-22	1" = 80'

FACILITY LAYOUT

REV: 03 04-16-24 D.J.G. (UPDATE SEEDING AREA)

1" = 30'
X-Section
Scale
1" = 80'



APPROXIMATE EARTHWORK QUANTITIES	
(11") TOPSOIL STRIPPING	0 Cu. Yds.
PAD RECLAMATION	30,430 Cu. Yds.
TOTAL CUT	30,430 Cu. Yds.
PAD RECLAIM - FILL	30,430 Cu. Yds.
DEFICIT MATERIAL	0 Cu. Yds.
TOPSOIL ON RECLAIMED PAD	4,050 Cu. Yds.

REV: 01 11-16-23 K.C. (UPDATE SURFACE)

NOTES:

- Fill quantity includes 10% for compaction.
- Calculations based on 11" of topsoil stripping.
- Cut/Fill slopes 4:1 (Typ.).

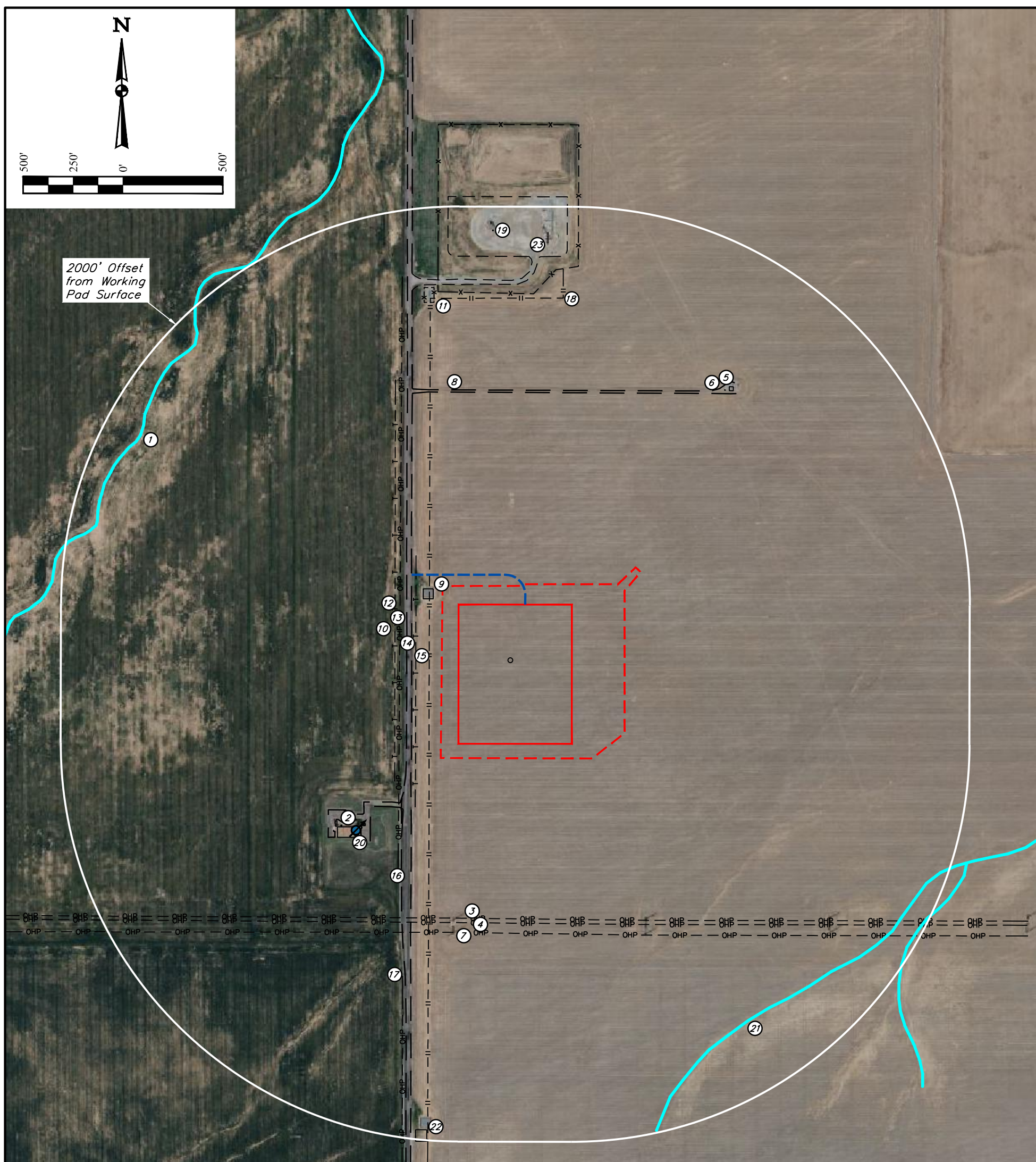
CRESTONE PEAK RESOURCES OPERATING LLC

ASPEN 3-65 15-14 SOUTH PAD
W 1/2 SW 1/4, SECTION 15, T3S, R65W, 6th P.M.
ADAMS COUNTY, COLORADO

SURVEYED BY	ORION RICE, N.W.	11-23-21	SCALE
DRAWN BY	K.C.	11-16-22	AS SHOWN
INTERIM RECLAMATION - CROSS SECTIONS			



UELS, LLC
Corporate Office * 85 South 200 East
Vernal, UT 84078 * (435) 789-1017














#	FEATURE	BEARING	DISTANCE	#	FEATURE	BEARING	DISTANCE
1	RIVERINE - R4SBA	NW	1870'±	23	ASPEN 3-65 15-14 2DH TANK	NORTH	1807'
2	BUILDING	SW	674'±				
3	POWER LINE	SOUTH	877'±				
4	POWER LINE	SOUTH	899'±				
5	FENCE	NE	1335'±				
6	ELECTRICAL BOX	NE	1323'±				
7	POWER LINE	SOUTH	948'±				
8	GRAVEL ROAD	NORTH	1067'±				
9	VALVE SITE FENCE	NW	131'±				
10	TELEPHONE LINE	WEST	320'±				
11	VALVE SITE FENCE	NW	1523'±				
12	POWER LINE	WEST	295'±				
13	MONAGHAN ROAD	WEST	237'±				
14	TELEPHONE LINE	WEST	215'±				
15	PIPELINE	WEST	147'±				
16	POWER POLE	SW	694±				
17	POWER POLE	SW	1200'±				
18	PIPELINE	NORTH	1541'±				
19	EX. ASPEN 3-65 15-14 2DH WELL	NORTH	1880'±				
20	WATER WELL	SW	685'±				
21	RIVERINE - R4SBC	SE	1605'±				
22	VALVE SITE FENCE	SOUTH	1946'±				

Reference:
 15-14-13
 Lat: 39.7
 Long: -10
 1460' FSL
 Ungraded
 PDOP: 1

REV. 5 12-20-23 K.G. (UPDATE D

LEGEND

- | | |
|---|------------------------|
|  | = OIL & GAS LOCATION |
|  | = WORKING PAD SURFACE |
|  | = PROPOSED ACCESS ROAD |
|  | = PIPELINE |
|  | = ROAD |
|  | = FENCE |
|  | = POWER LINE |
|  | = TELEPHONE LINE |
|  | = REFERENCE POINT |
|  | = DRAINAGE |
|  | = WATER WELL |

NOTES:

- Bearings & distances shown are from the nearest edge of working pad surface.



UELS, LLC
Corporate Office * 85 South 200 East
Vernal, UT 84078 * (435) 789-1017

**CRESTONE PEAK
RESOURCES OPERATING LLC**

**ASPEN 3-65 15-14 SOUTH PAD
W 1/2 SW 1/4, SECTION 15, T3S, R65W, 6th P.M.
ADAMS COUNTY, COLORADO**

SURVEYED BY	ORION RICE, N.W.	11-23-21	SCALE
DRAWN BY	C.IVIE	04-12-21	1" = 500'
LOCATION DRAWING			



PHOTO: VIEW OF PROPOSED LOCATION

CAMERA ANGLE: NORTHERLY



PHOTO: VIEW OF PROPOSED LOCATION

CAMERA ANGLE: EASTERLY

REV: 2 12-20-23 K.C. (UPDATE PHOTO)

CRESTONE PEAK RESOURCES OPERATING LLC

ASPEN 3-65 15-14 SOUTH PAD
W 1/2 SW 1/4, SECTION 15, T3S, R65W, 6th P.M.
ADAMS COUNTY, COLORADO

TAKEN BY	G.W.	12-20-23	
DRAWN BY	C.IVIE	04-12-21	
LOCATION PHOTOS		PHOTO 1	



UELS, LLC
Corporate Office * 85 South 200 East
Vernal, UT 84078 * (435) 789-1017



PHOTO: VIEW OF PROPOSED LOCATION

CAMERA ANGLE: SOUTHERLY



PHOTO: VIEW OF PROPOSED LOCATION

CAMERA ANGLE: WESTERLY

REV: 2 12-20-23 K.C. (UPDATE PHOTO)

CRESTONE PEAK RESOURCES OPERATING LLC

ASPEN 3-65 15-14 SOUTH PAD
W 1/2 SW 1/4, SECTION 15, T3S, R65W, 6th P.M.
ADAMS COUNTY, COLORADO

TAKEN BY	G.W.	12-20-23	
DRAWN BY	C.IVIE	04-12-21	
LOCATION PHOTOS		PHOTO 2	



UELS, LLC
Corporate Office * 85 South 200 East
Vernal, UT 84078 * (435) 789-1017



REV: 3 12-20-23 K.C. (UPDATE PAD)

LEGEND:

- WORKING PAD SURFACE
- PROPOSED ACCESS ROAD
- NORTH FIELD OF VIEW
- EAST FIELD OF VIEW
- SOUTH FIELD OF VIEW
- WEST FIELD OF VIEW
- STANDING POINT
- LOCATION STAKE



UELS, LLC
Corporate Office * 85 South 200 East
Vernal, UT 84078 * (435) 789-1017



**CRESTONE PEAK
RESOURCES OPERATING LLC**

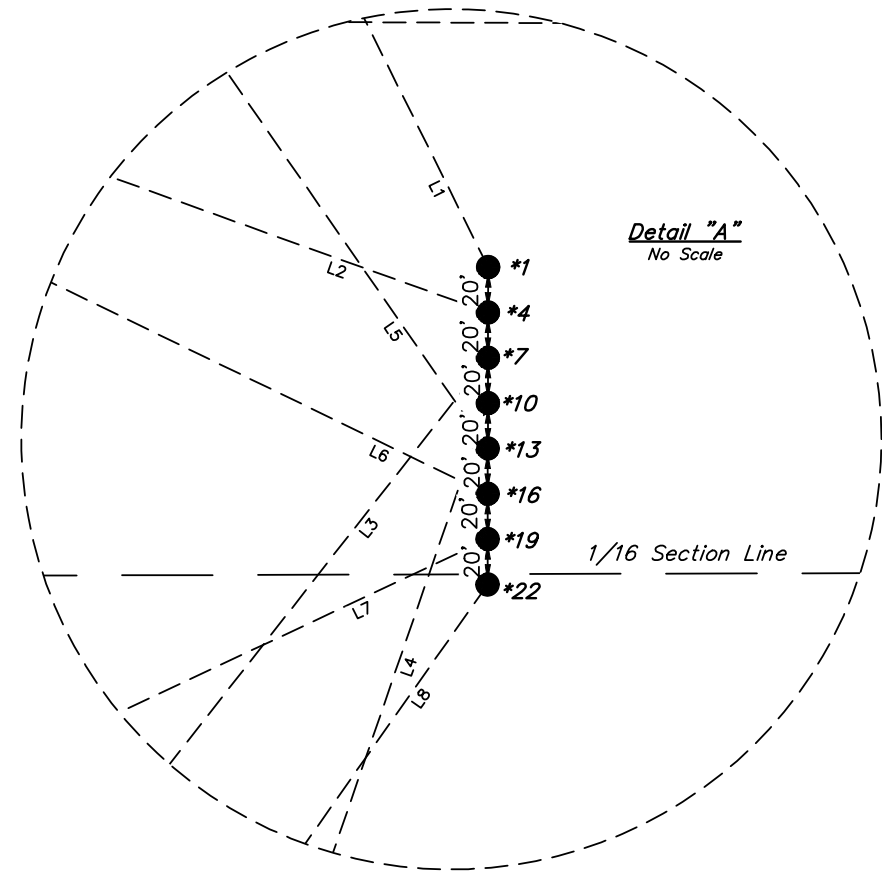
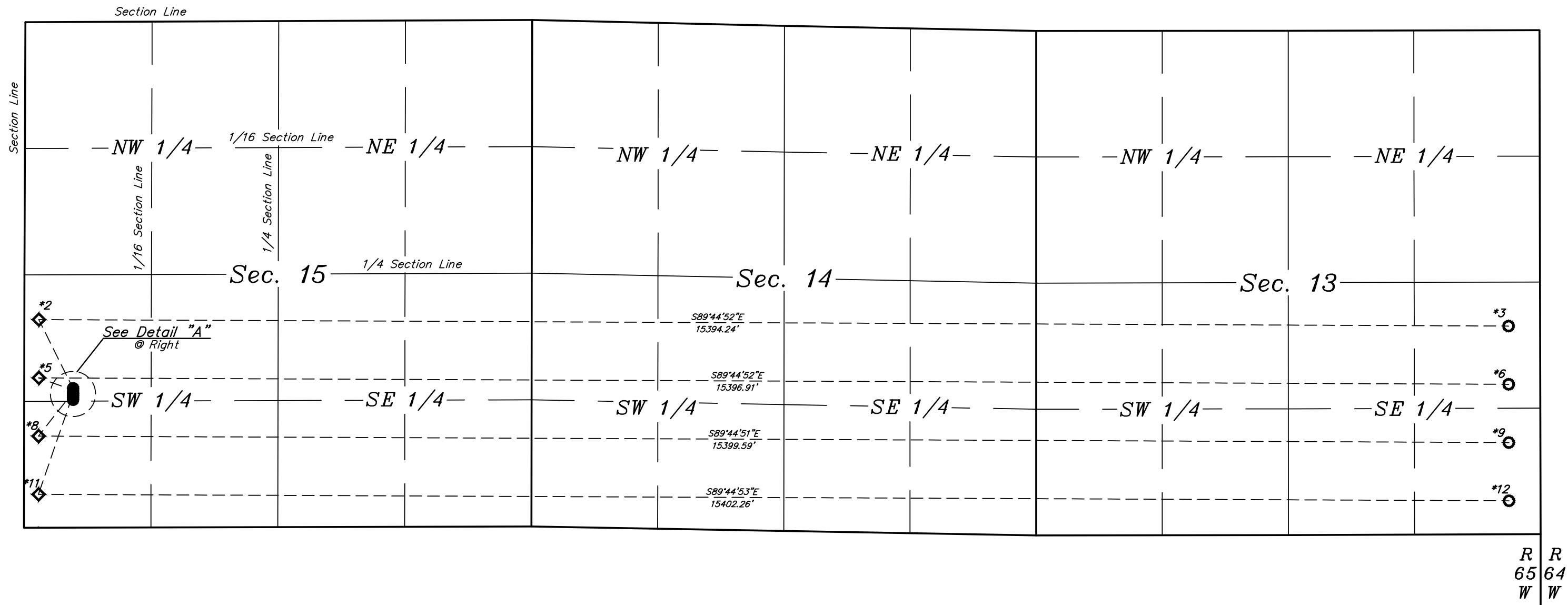
ASPEN 3-65 15-14 SOUTH PAD
W 1/2 SW 1/4, SECTION 15, T3S, R65W, 6th P.M.
ADAMS COUNTY, COLORADO

TAKEN BY	G.W.	12-20-23	SCALE
DRAWN BY	C.IVIE	04-12-21	1" = 200'
LOCATION PHOTOS			AERIAL

LEGEND:
● = SURFACE LOCATION.
◇ = TOP PRODUCTION ZONE.
○ = TARGET BOTTOM HOLE.



LINE TABLE		
LINE	DIRECTION	LENGTH
L1	N26°29'39"W	803.82'
L2	N70°13'10"W	382.35'
L3	S38°05'10"W	585.21'
L4	S19°01'15"W	1111.29'
L5	N34°43'43"W	1155.23'
L6	N64°09'10"W	732.70'
L7	S64°49'25"W	730.03'
L8	S35°08'16"W	1150.15'



WELL	SHL	SHL FOOTAGES	TPZ	TPZ FOOTAGES	TBH	TBH FOOTAGES
ASPEN 3-65 15-14-13 3AH	*1	1460' FSL 510' FWL	*2	2180' FSL 150' FWL	*3	2180' FSL 330' FEL
ASPEN 3-65 15-14-13 3BH	*4	1440' FSL 510' FWL	*5	1570' FSL 150' FWL	*6	1570' FSL 330' FEL
ASPEN 3-65 15-14-13 4AH	*7	1420' FSL 510' FWL	*8	960' FSL 150' FWL	*9	960' FSL 330' FEL
ASPEN 3-65 15-14-13 4BH	*10	1400' FSL 510' FWL	*11	350' FSL 150' FWL	*12	350' FSL 330' FEL



UELS, LLC
Corporate Office * 85 South 200 East
Vernal, UT 84078 * (435) 789-1017



CRESTONE PEAK RESOURCES OPERATING LLC

ASPEN 3-65 15-14 SOUTH PAD
W 1/2 SW 1/4, SECTION 15, T3S, R65W, 6th P.M.
ADAMS COUNTY, COLORADO

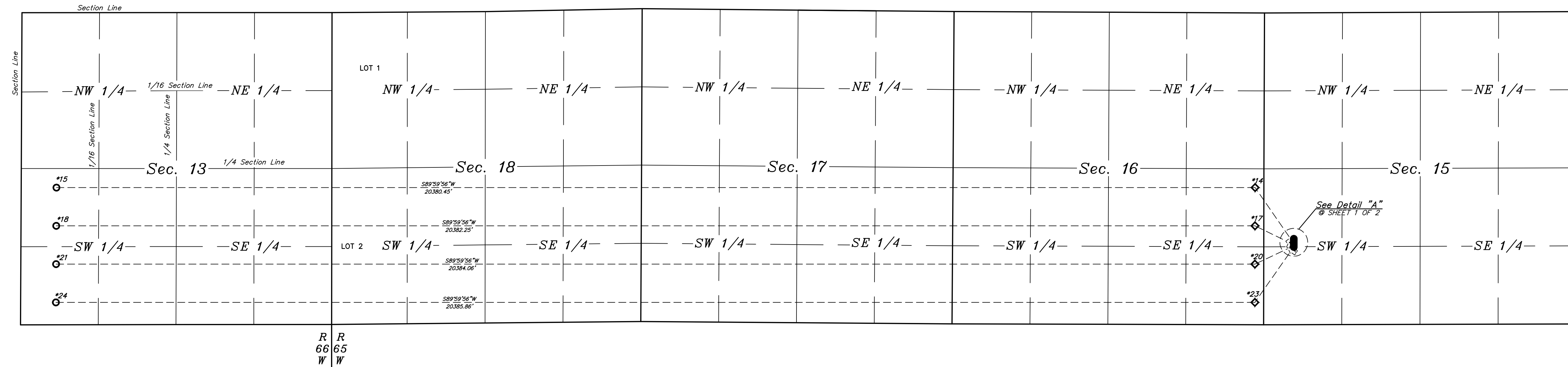
SURVEYED BY	ORION RICE, N.W.	11-23-21	SCALE
DRAWN BY	K.C.	11-16-23	1" = 1000'
DIRECTIONAL WELL PLAT			

SHEET 1 OF 2

● = SURFACE LOCATION.
 ◆ = TOP PRODUCTION ZONE.
 ○ = TARGET BOTTOM HOLE.



LINE TABLE		
LINE	DIRECTION	LENGTH
L5	N34°43'43"W	1155.23'
L6	N64°09'10"W	732.70'
L7	S64°49'25"W	730.03'
L8	S35°08'16"W	1150.15'



WELL	SHL	SHL FOOTAGES	TPZ	TPZ FOOTAGES	TBH	TBH FOOTAGES
QUICKSILVER 3-65 16-17-18-13 3AH	*13	1380' SHL 510' FWL	*14	2330' SHL 150' FWL	*15	2330' SHL 600' FWL
QUICKSILVER 3-65 16-17-18-13 3BH	*16	1360' SHL 510' FWL	*17	1680' SHL 150' FWL	*18	1680' SHL 600' FWL
QUICKSILVER 3-65 16-17-18-13 4AH	*19	1340' SHL 510' FWL	*20	1030' SHL 150' FWL	*21	1030' SHL 600' FWL
QUICKSILVER 3-65 16-17-18-13 4BH	*22	1320' SHL 510' FWL	*23	380' SHL 150' FWL	*24	380' SHL 600' FWL

