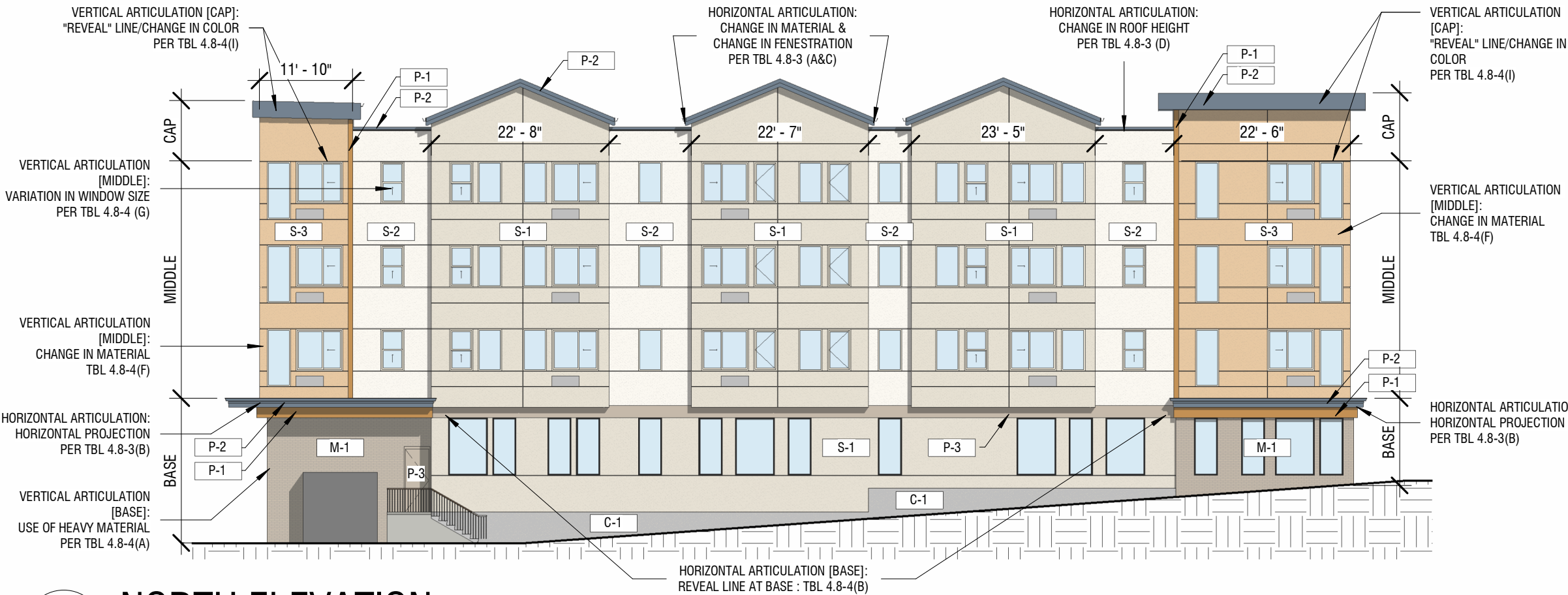
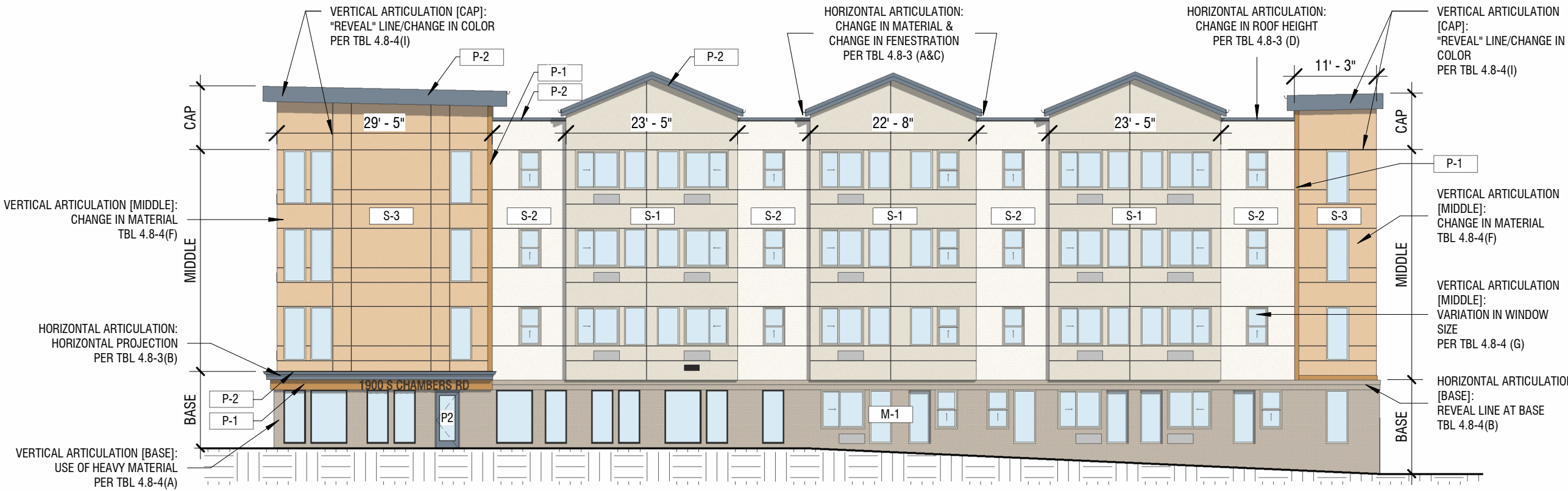


MATERIAL LEGEND

|     |   |
|-----|---|
| S-1 | MATERIAL : STUCCO<br>SW 7562 'ROMAN COLUMN'       |
| S-2 | MATERIAL : STUCCO<br>SW 6148 'WOOL SKEIN'         |
| S-3 | MATERIAL : STUCCO<br>SW 6381 'ANJOU PEAR'         |
| M-1 | MATERIAL : BRICK MASONRY<br>SUMMIT TWILIGHT GRAIN |
| C-1 | MATERIAL : CONCRETE                               |
| P-1 | MATERIAL : PAINT<br>SW 6250 'GRANITE PEAK'        |
| P-2 | MATERIAL : PAINT<br>SW 6384 'CUT THE MUSTARD'     |
| P-3 | MATERIAL : PAINT<br>SW 9117 'URBAN JUNGLE'        |



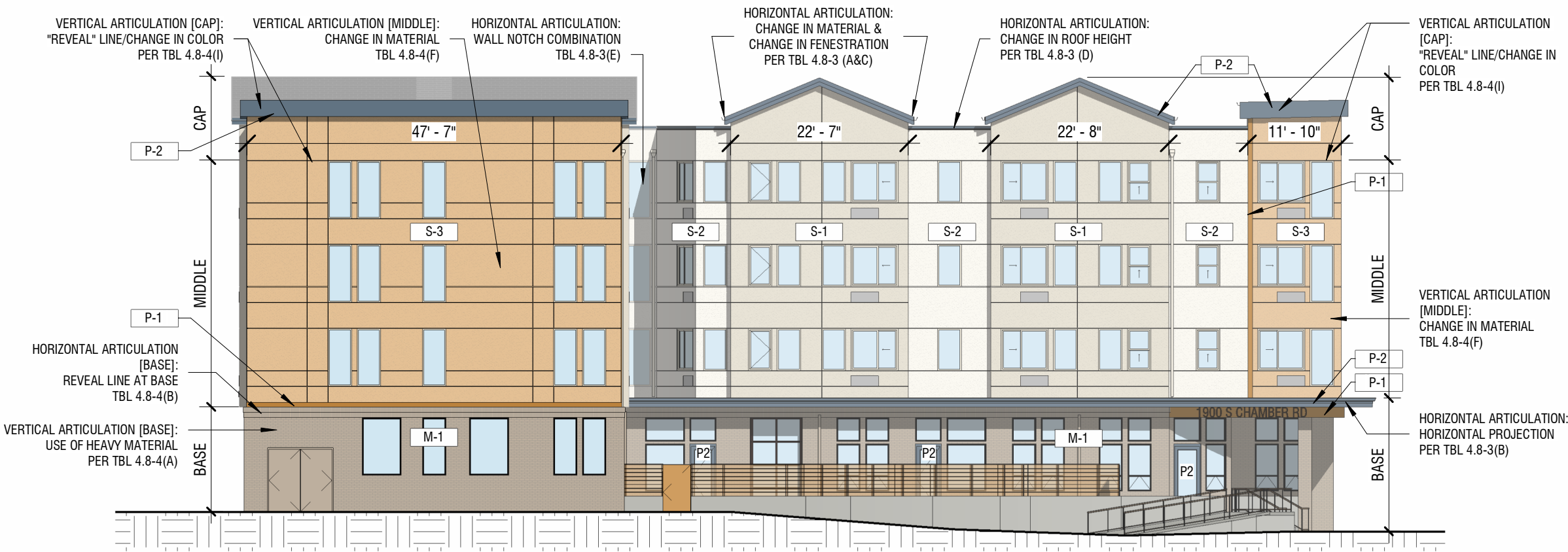
2 NORTH ELEVATION  
1/16" = 1'-0"



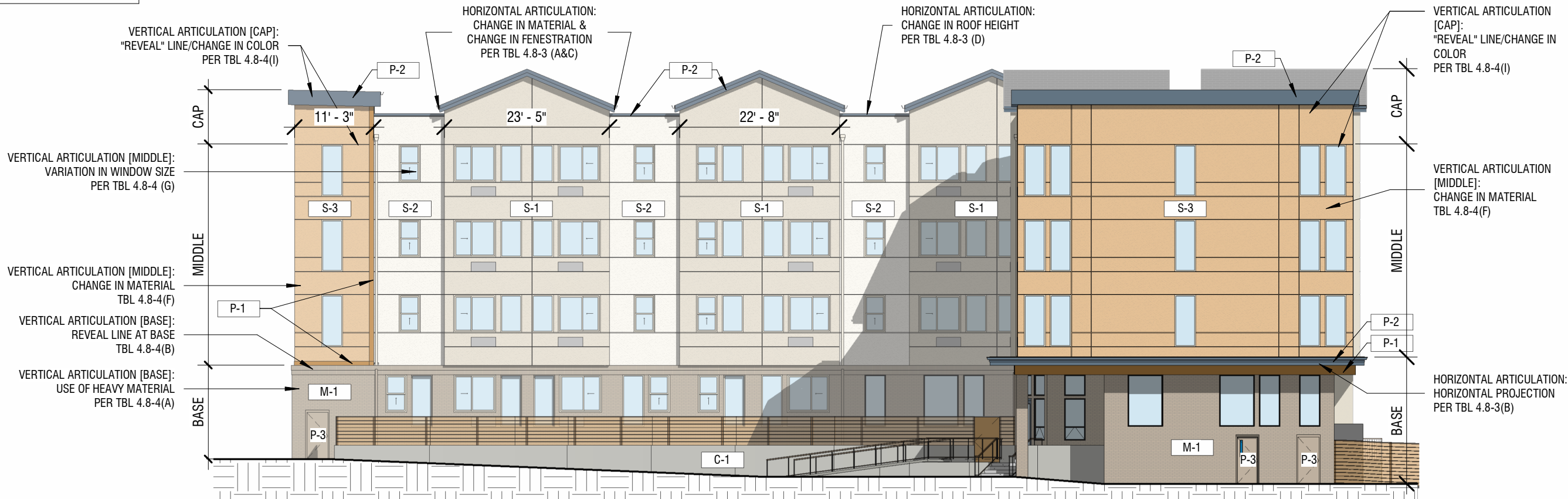
1 WEST ELEVATION  
1/16" = 1'-0"

MATERIAL LEGEND

|     |   |
|-----|---|
| S-1 | MATERIAL : STUCCO<br>SW 7562 'ROMAN COLUMN'       |
| S-2 | MATERIAL : STUCCO<br>SW 6148 'WOOL SKEIN'         |
| S-3 | MATERIAL : STUCCO<br>SW 6381 'ANJOU PEAR'         |
| M-1 | MATERIAL : BRICK MASONRY<br>SUMMIT TWILIGHT GRAIN |
| C-1 | MATERIAL : CONCRETE                               |
| P-1 | MATERIAL : PAINT<br>SW 6250 'GRANITE PEAK'        |
| P-2 | MATERIAL : PAINT<br>SW 6384 'CUT THE MUSTARD'     |
| P-3 | MATERIAL : PAINT<br>SW 9117 'URBAN JUNGLE'        |



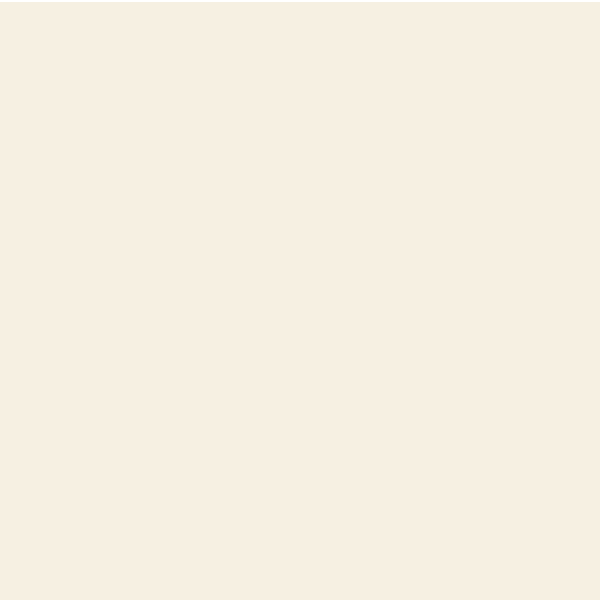
2 SOUTH ELEVATION  
1/16" = 1'-0"



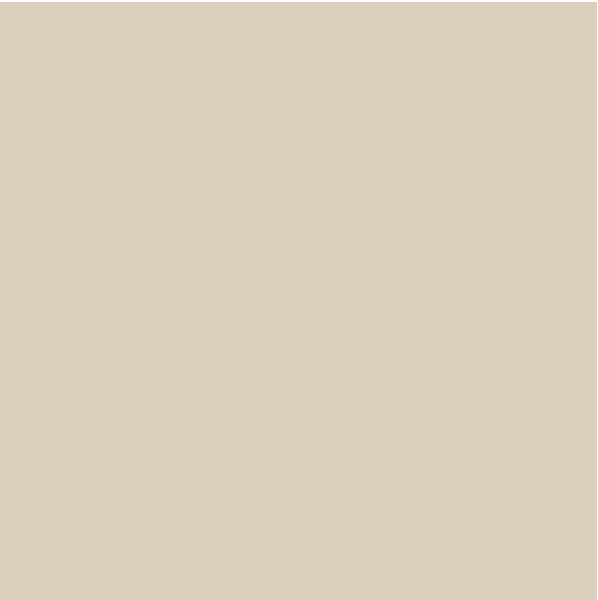
1 EAST ELEVATION  
1/16" = 1'-0"

# MATERIAL LEGEND

|     |   |
|-----|---|
| S-1 | MATERIAL : STUCCO<br>SW 7562 'ROMAN COLUMN'       |
| S-2 | MATERIAL : STUCCO<br>SW 6148 'WOOL SKEIN'         |
| S-3 | MATERIAL : STUCCO<br>SW 6381 'ANJOU PEAR'         |
| M-1 | MATERIAL : BRICK MASONRY<br>SUMMIT TWILIGHT GRAIN |
| C-1 | MATERIAL : CONCRETE                               |
| P-1 | MATERIAL : PAINT<br>SW 6250 ' GRANITE PEAK'       |
| P-2 | MATERIAL : PAINT<br>SW 6384 'CUT THE MUSTARD'     |
| P-3 | MATERIAL : PAINT<br>SW 9117 'URBAN JUNGLE'        |



STUCCO : S-1



STUCCO : S-2



STUCCO : S-3



BRICK MASONRY : M-1



PAINT : P-1



PAINT : P-2



PAINT : P-3



1

SOUTHEAST COURTYARD PERSPECTIVE



1

NORTHWEST PERSPECTIVE



1

NORTHEAST PERSPECTIVE