

FILE:K:\2024\1024170 DIA Pre-Flight Parking Facility\CAD\1024170_PDP.dwg DATE:2/26/2025 TIME:12:02 PM (by:garrett.walstad)

DRAINAGE LEGEND

- PROPERTY LINE
--- BASIN DELINEATION
● DESIGN POINT
A - DRAINAGE BASIN
B - DRAINAGE BASIN ACREAGE
C - 2-YEAR RUNOFF COEFFICIENT
D - 100-YEAR RUNOFF COEFFICIENT
--- EXISTING CONTOUR

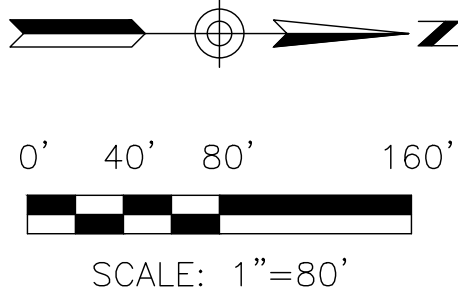
BENCHMARK

▲ CITY OF AURORA ID: 3S6505SW002
NGS CONTROL POINT KNOWN AS "TYNIE" BEING A PUNCH IN THE CENTER OF A STAINLESS-STEEL ROD ENCLOSED IN A 6-INCH PVC PIPE WITH A LOGO LID, ALL SURROUNDED BY A CONCRETE COLLAR FLUSH WITH THE GROUND, HAVING A PUBLISHED ELEVATION OF 5406.21 FEET 1988 NAVD. THE MONUMENT IS LOCATED IN THE NORTHWEST QUARTER OF SECTION 5, TOWNSHIP 3 SOUTH, RANGE 65 WEST BEING N 85°39'39" W, 96.73 FEET FROM THE CENTER QUARTER CORNER OF SAID SECTION 5. THE MONUMENT IS APPROXIMATELY 6.8 FEET NORTH OF THE SOUTH LINE OF THE NORTHWEST QUARTER.

Revise Benchmark to match Benchmark description on the City's website (Typical):

<https://auroraco.maps.arcgis.com/apps/webappviewer/index.html?id=72179202572d45cbb2709c801b4a7ad0>

Benchmark information updated



APPROVED ONE YEAR FROM THIS DATE

AURORA WATER - DRAINAGE DIVISION

DATE

1st Review

Comments in magenta red provided by Chris Hill, chhill@auroragov.org (Drainage)

Please provide your Response To Comment adjacent to the comment made on the page prior to upload. While this is not required, it does facilitate faster reviews.

Advisory Comment:

The Review Fees paid at the time of Initial Submission cover three Preliminary Drainage Report Reviews. If these comments are not addressed or design changes are made on the second submittal generating additional comments such that approval cannot be obtained within those three reviews, a new Review fee will be assessed upon receipt of the 4th Submittal covering up to three additional reviews. This fee will be assessed for each set of three additional reviews as required. Current fee schedules can be found at (https://www.auroragov.org/business_services/development_center/fees/development_fees_checklist).

Noted

On the first sheet of the drainage plan, include a table for all proposed detention, water quality facilities, and channels, each with an identifier. The table must state the facility identifier, public or private ownership, the party responsible for maintenance, and identify facilities designed to be MEP (MHFD Maintenance Eligible). Refer to the SDDTC sections listed below for an example. (SDDTC 2.3.5, 2.4.4, 2.5.3.3)

The Preliminary Drainage Plans and Site Plan will need to match in order for the Preliminary Drainage Report & Plans to be approved

Noted

Existing drainage plans moved to back so proposed informations shows per comments

EXISTING DETENTION BASIN EDN: 220232

EXISTING 3'X5' RBC
Q₂=5.26 CFS
Q₁₀₀=18.23 CFS
EDN: 214020

For the Preliminary Drainage Report and Plans as well as the eventual Final Drainage Report and Civil Plans, refer to the project's full subdivision name: "Porteos Subdivision Filing #10". The PA-11 Middle Subdivision can be included as a second line. Note that this does not apply to the Site Plan submittal. (Typical all Title Blocks)

Revisions removed from PDP

Advisory Comment

The City views "Revision Tables" such as this as applicable to documents once approved by the City. If there is a need to track "submittals" or "printings" (or similar) a separate table can be included, but anything listed in the "Revision" section prior to an EDN being assigned after approval will receive a comment to delete it.

DIBBLE

2696 SOUTH COLORADO BLVD,
SUITE 330
DENVER, CO 80222
PHONE: 303.872.5756
CONTACT: GARRETT WALSTAD, PE

InterPark

INTERPARK, LLC
200 N. LA SALLE ST. STE. 400
CHICAGO, IL 60601
PHONE: 312.835.2800
CONTACT: PATRICK MARTIN

dcb
construction company, inc.

DCB CONSTRUCTION COMPANY, INC.
909 EAST 62ND AVE.
DENVER, CO 80216
PHONE: 303.287.5525
CONTACT: KATHERINE HAWKINS

**PORTEOS PA-11 MIDDLE
DIA PRE-FLIGHT PARKING FACILITY**
NWC OF N JACKSON GAP W & E 56TH AVE, AURORA, CO 80019

PRELIMINARY DRAINAGE PLAN

Issued for _____ Rev. _____ Date _____

Project No. **1024170**

Designed: KEN Drawn: CJN Checked: KEN

Drawing Title
**EXISTING OVERALL
DRAINAGE PLAN**

SHEET

PDP1.1

DRAINAGE PLAN NOTES

1. CITY OF AURORA PLAN REVIEW IS ONLY FOR GENERAL CONFORMANCE WITH CITY OF AURORA DESIGN CRITERIA AND THE CITY CODE. THE CITY IS NOT RESPONSIBLE FOR THE ACCURACY AND ADEQUACY OF THE DESIGN, OF DIMENSIONS AND ELEVATIONS WHICH MUST BE CONFIRMED AND CORRELATED AT THE JOB SITE. THE CITY OF AURORA, THROUGH THE APPROVAL OF THIS DOCUMENT, ASSUMES NO RESPONSIBILITY FOR THE COMPLETENESS AND/OR ACCURACY OF THIS DOCUMENT.
2. APPROVAL OF THIS DOCUMENT BY CITY OF AURORA DOES NOT IMPLY APPROVAL FOR ANY OFF-SITE WORK ON ADJACENT PRIVATE PROPERTY. IN IS THE OWNER'S RESPONSIBILITY TO COORDINATE WITH ADJACENT PROPERTY OWNERS AND OBTAIN ALL NECESSARY APPROVALS AND EASEMENTS FOR SUCH WORK.
3. ALL STORM INFRASTRUCTURE IS PRIVATE AND DESIGNED FOR THE 100-YR STORM EVENT.
4. ENSURE THAT THE PROVISIONS OF CRS 37-92-602, AS AMENDED BY SENATE BILL 15-212, REGARDING NOTIFICATION OF DOWNSTREAM WATER RIGHTS HOLDERS ARE UPHELD.
5. THE DEVELOPER SHALL HAVE A LICENSED PROFESSIONAL ENGINEER CERTIFY EACH STORMWATER DETENTION POND AND/OR WATER QUALITY SCM IS BUILT ACCORDING TO THE APPROVED PLANS AND SPECIFICATIONS AND THE REQUIRED DETENTION VOLUME, INCLUDING THE WQCV WHEN USED, IS MET. THE CERTIFICATION SHALL ALSO VERIFY ALL PERTINENT DIMENSIONS, ELEVATIONS, REQUIRED OUTLET ORIFICE PLATES FOR DETENTION AND WQCV AND OTHER PERMANENT SCMS REQUIREMENTS ARE INSTALLED PER THE APPROVED PLANS AND SPECIFICATIONS, AND SHALL SHOW THE AS-BUILT DESIGN VOLUMES (WQCV, EURV, 100 YEAR) AND OTHER PERTINENT DIMENSIONS, ELEVATIONS AND CAPACITY REQUIREMENTS ASSOCIATED WITH THE SCM USED. THE CERTIFICATION SHALL BE PROVIDED TO THE CITY OF AURORA ENGINEERING CONTROL SECTION PRINCIPAL ENGINEER. AN APPROVED POND CERTIFICATE SHALL BE REQUIRED PRIOR TO THE RETURN OF ANY FISCAL SECURITY DEPOSIT (AS WELL AS SATISFYING OTHER CONDITIONS OF THE STORMWATER PERMIT) FOR SITES THAT DO NOT REQUIRE A CERTIFICATE OF OCCUPANCY. EXAMPLES OF THESE SITES INCLUDE BUT ARE NOT LIMITED TO: SITES WITHOUT VERTICAL CONSTRUCTION, OIL AND GAS WELL PADS, OUTDOOR STORAGE, AND TOW YARDS. AN APPROVED POND CERTIFICATE SHALL BE REQUIRED PRIOR TO COMMENCEMENT OF BUSINESS OPERATIONS. IN NO CASE SHALL A CERTIFICATE OF OCCUPANCY OR TEMPORARY CERTIFICATE OF OCCUPANCY BE ISSUED WITHOUT AN APPROVED POND CERTIFICATE.

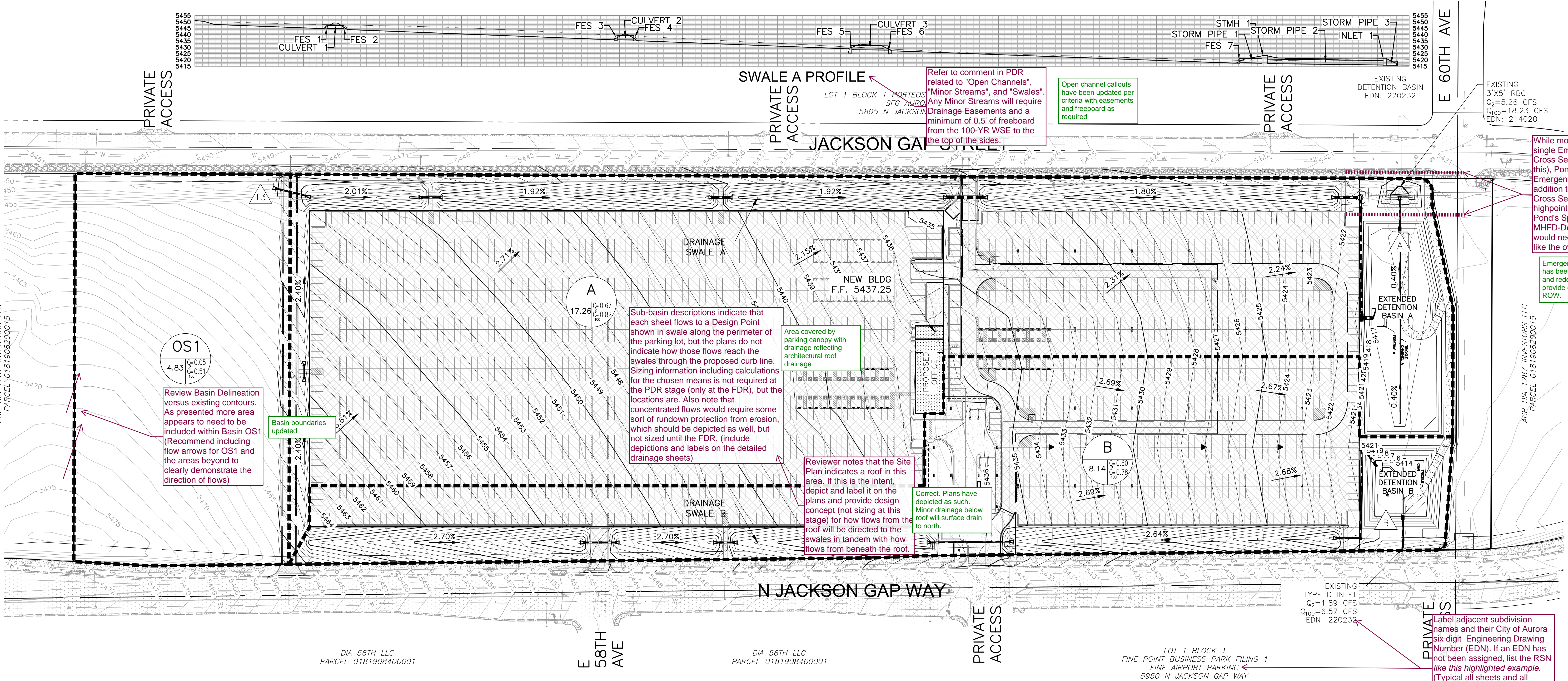
DEVELOPED ROUTED SUMMARY TABLE							
DESIGN POINT	BASIN	AREA (ac.)	IMP. (%)	C ₂	C ₁₀₀	Q ₂ (cfs)	Q ₁₀₀ (cfs)
POND A	A + OS1	22.09	64.8%	0.53	0.75	14.0	57.4
POND B	B	8.14	73.3%	0.60	0.78	7.7	28.6
13	OS1	4.83	7.27%	0.05	0.51	0.3	9.4

Revise Tables as necessary after addressing comments in report (typical all sheets, comment appears once)

All tables revised and updated

EXTENDED DETENTION POND B SUMMARY TABLE					
STAGE	W.S.E. (FEET)	REQUIRED STORAGE (FT³)	PROVIDED STORAGE (FT³)	ALLOWABLE RELEASE (CFS)	PROPOSED RELEASE (CFS)
WQCV	5,415.10	8,591	8,698	NA	0.1
EURV	5,417.10	25,352	26,174	NA	2.2
100-YEAR	5,418.60	42,551	43,681	6.57	6.57
SPILLWAY	5,419.00	NA	49,050	NA	NA
100-YR FLOW	5,419.33	NA	NA	NA	28.64
FREEBOARD	5,420.33	NA	NA	NA	NA

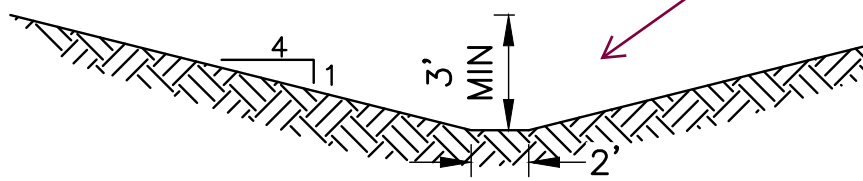
EXTENDED DETENTION POND A SUMMARY TABLE					
STAGE	W.S.E. (FEET)	REQUIRED STORAGE (FT³)	PROVIDED STORAGE (FT³)	ALLOWABLE RELEASE (CFS)	PROPOSED RELEASE (CFS)
WQCV	5,417.50	20,316	22,118	NA	0.3
EURV	5,418.70	60,226	63,212	NA	4.70
100-YEAR	5,420.00	105,172	107,523	18.2	18.2
SPILLWAY	5,420.00	NA	107,523	NA	NA
100-YR FLOW	5,420.33	NA	NA	NA	57.4
FREEBOARD	5,421.33	NA	NA	NA	NA



DRAINAGE LEGEND

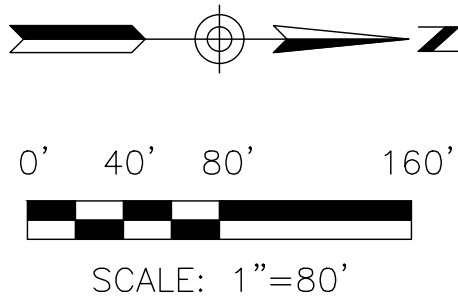
- PROPERTY LINE
- BASIN DELINEATION
- DESIGN POINT
- A - DRAINAGE BASIN
- B - DRAINAGE BASIN ACREAGE
- C - 2-YEAR RUNOFF COEFFICIENT
- D - 100-YEAR RUNOFF COEFFICIENT
- PROPOSED CONTOUR
- EXISTING CONTOUR

TYPICAL SWALE SECTION



BENCHMARK

▲ CITY OF AURORA ID: 3S6505SW002. NGS CONTROL POINT KNOWN AS "LYNNE" BEING A PUNCH IN THE CENTER OF A STAINLESS-STEEL ROD ENCLOSED IN A 6-INCH PVC PIPE WITH A LOGO LID, ALL SURROUNDED BY A CONCRETE COLLAR FLUSH WITH THE GROUND, HAVING A PUBLISHED ELEVATION OF 5406.21 FEET 1988 NAVD. THE MONUMENT IS LOCATED IN THE NORTHWEST QUARTER OF SECTION 5, TOWNSHIP 3 SOUTH, RANGE 65 WEST BEING N 85°39'39" W, 96.73 FEET FROM THE CENTER QUARTER CORNER OF SAID SECTION 5. THE MONUMENT IS APPROXIMATELY 6.8 FEET NORTH OF THE SOUTH LINE OF THE NORTHWEST QUARTER.



DIBBLE

2696 SOUTH COLORADO BLVD,
SUITE 330
DENVER, CO 80222
PHONE: 303.872.5756
CONTACT: GARRETT WALSTAD, PE

InterPark

INTERPARK, LLC
200 N. LA SALLE ST. STE. 400
CHICAGO, IL 60601
PHONE: 312.935.2800
CONTACT: PATRICK MARTIN

dcb
construction company, inc.

DCB CONSTRUCTION COMPANY, INC.
909 EAST 62ND AVE.
DENVER, CO 80216
PHONE: 303.287.5525
CONTACT: KATHERINE HAWKINS

While most Extended Detention Basins require a single Emergency Overflow Calculation and Cross Section (Pond B below is an example of this), Pond A has two locations where Emergency Overflows could be passed. In addition to the Emergency Spillway Overflow Cross Section, include a second one for the highpoint in Jackson Gap Street. (Note that the Pond's Spillway WSE can be calculated by the MHFD-Detention Spreadsheet, but the Road would need to be analyzed as an irregular weir like the overflows for the proposed culverts.

Emergency overflow has been evaluated and redesigned to provide conveyance to ROW.

Label adjacent subdivision names and their City of Aurora six digit Engineering Drawing Number (EDN). If an EDN has not been assigned, list the RSN like this highlighted example. (Typical all sheets and all adjacent projects and properties. Comment appears once.) (SDDTC 2.3.5, 2.4.4, 2.5.3.1)

Labels updated to include EDN where available

For each emergency overflow location, include a cross section with the emergency overflow discharge, WSEL, dimensioned freeboard, and adjacent building lowest point of entry (LPE) if applicable.

(SDDTC 2.2.4.U)

Emergency overflow cross sections added

Project No. 1024170

Designed: KEN Drawn: CJN Checked: KEN

Drawing Title

PROPOSED OVERALL DRAINAGE PLAN

SHEET

PDP1.2

MATCH LINE SEE SHEET PDP2.2

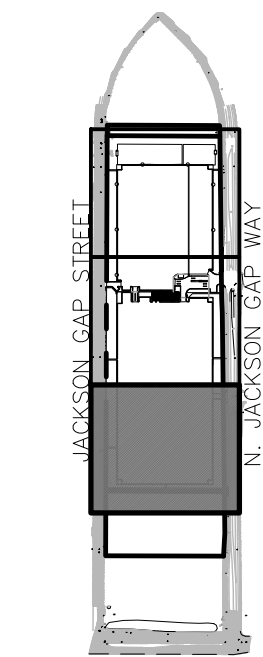
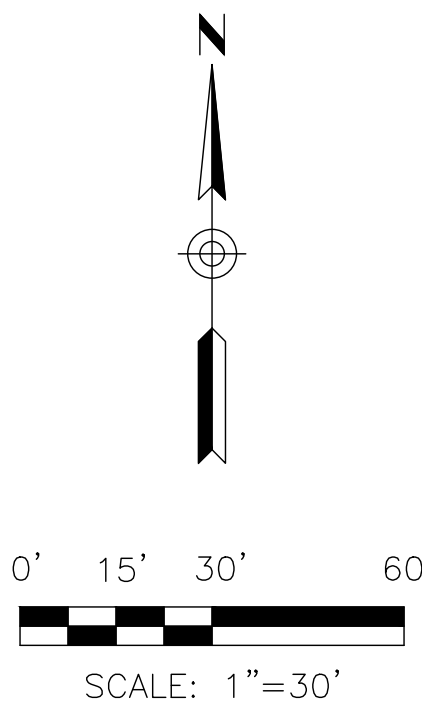
DEVELOPED ROUTED SUMMARY TABLE					
DESIGN POINT	BASIN	AREA (ac.)	IMP. (%)	Q ₂ (cfs)	Q ₁₀₀ (cfs)
1	A6-A7 + OS1	7.39	31.9%	2.8	22.1
2	A5-A7 + OS1	12.57	54.4%	8.8	44.0
3	A4-A7 + OS1	16.50	62.0%	12.8	58.0
4	A3-A7 + OS1	17.27	63.2%	12.3	54.8
5	A2	3.45	93.2%	6.1	20.6
6	A1-A7 + OS1	22.09	64.8%	14.0	57.4
7	B6	1.26	59.4%	1.4	6.4
8	B5-B6	1.83	61.2%	2.0	8.9
9	B4-B6	2.69	61.6%	2.7	12.1
10	B3-B6	3.31	55.2%	2.5	12.3
11	B2	4.18	91.2%	7.4	25.0
12	B1-B6	8.14	73.3%	7.7	28.6
13	OS1	4.83	7.3%	0.3	9.4
14	A7	0.20	38.3%	0.1	0.8

DRAINAGE LEGEND

- PROPERTY LINE
BASIN DELINEATION
CULVERT
- DESIGN POINT
A - DRAINAGE BASIN
B - DRAINAGE BASIN ACREAGE
C - 2-YEAR RUNOFF COEFFICIENT
D - 100-YEAR RUNOFF COEFFICIENT
- POND EMERGENCY OVERFLOW PATH
BASIN EMERGENCY OVERFLOW PATH
PROPOSED CONTOUR
EXISTING CONTOUR

BENCHMARK

▲ CITY OF AURORA ID: 3S6505SW002
NCS CONTROL POINT KNOWN AS "LYNNE" BEING A PUNCH IN THE CENTER OF A STAINLESS-STEEL ROD ENCLOSED IN A 6-INCH PVC PIPE WITH A LOGO LID, ALL SURROUNDED BY A CONCRETE COLLAR FLUSH WITH THE GROUND, HAVING A PUBLISHED ELEVATION OF 5406.21 FEET 1988 NAVD. THE MONUMENT IS LOCATED IN THE NORTHWEST QUARTER OF SECTION 5, TOWNSHIP 3 SOUTH, RANGE 65 WEST BEING N 85°39'39" W, 96.73 FEET FROM THE CENTER QUARTER CORNER OF SAID SECTION 5. THE MONUMENT IS APPROXIMATELY 6.8 FEET NORTH OF THE SOUTH LINE OF THE NORTHWEST QUARTER.



1" = 1000'

DIBBLE

2696 SOUTH COLORADO BLVD,
SUITE 330
DENVER, CO 80222
PHONE: 303.872.5756
CONTACT: GARRETT WALSTAD, PE

InterPark

INTERPARK, LLC
200 N. LA SALLE ST. STE. 400
CHICAGO, IL 60601
PHONE: 312.835.2800
CONTACT: PATRICK MARTIN

dcb
construction company, inc.

DCB CONSTRUCTION COMPANY, INC.
909 EAST 62ND AVE.
DENVER, CO 80216
PHONE: 303.287.5525
CONTACT: KATHERINE HAWKINS

ORTEOS PA-11 MIDDLE
DIA PRE-FLIGHT PARKING FACILITY
NWC OF N JACKSON GAP W & E 56TH AVE, AURORA, CO 80019

PRELIMINARY DRAINAGE PLAN

Issued for Rev. Date

Project No. 1024170

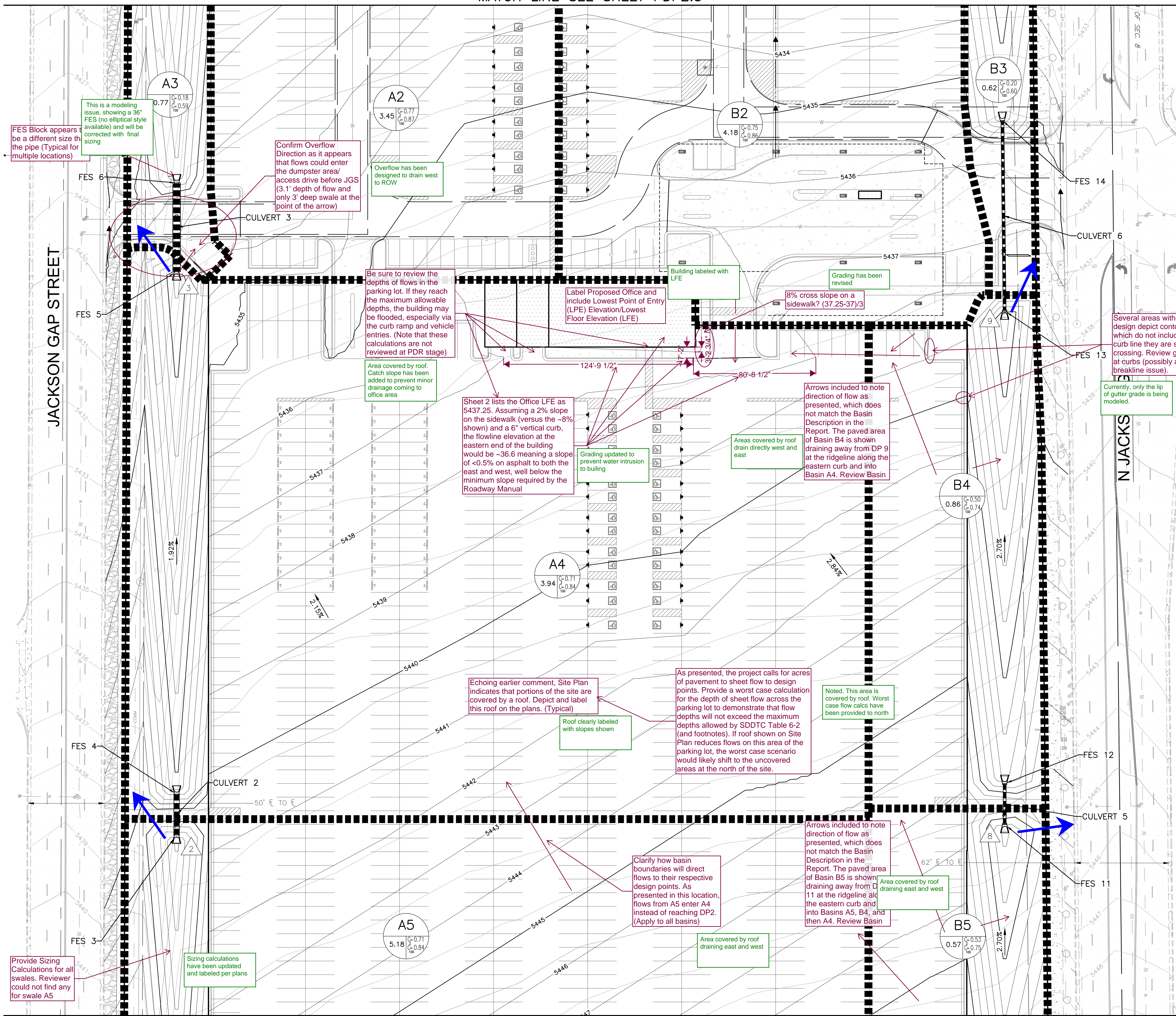
Designed: KEN Drawn: CJN Checked: KEN

Drawing Title
DETAILED DRAINAGE
PLAN 1

SHEET

PDP2.1

MATCH LINE SEE SHEET PDP2.3



DEVELOPED ROUTED SUMMARY TABLE					
DESIGN POINT	BASIN	AREA (ac.)	IMP. (%)	O ₂ (cfs)	O ₁₀₀₀ (cfs)
1	A6-A7 + OS1	7.39	31.9%	2.8	22.1
2	A5-A7 + OS1	12.57	54.4%	8.8	44.0
3	A4-A7 + OS1	16.50	62.0%	12.8	58.0
4	A3-A7 + OS1	17.27	63.2%	12.3	54.8
5	A2	3.45	93.2%	6.1	20.6
6	A1-A7 + OS1	22.09	64.8%	14.0	57.4
7	B6	1.26	59.4%	1.4	6.4
8	B5-B6	1.83	61.2%	2.0	8.9
9	B4-B6	2.69	61.6%	2.7	12.1
10	B3-B6	3.31	55.2%	2.5	12.3
11	B2	4.18	91.2%	7.4	25.0
12	B1-B6	8.14	73.3%	7.7	28.6
13	OS1	4.83	7.3%	0.3	9.4
14	A7	0.20	38.3%	0.1	0.8

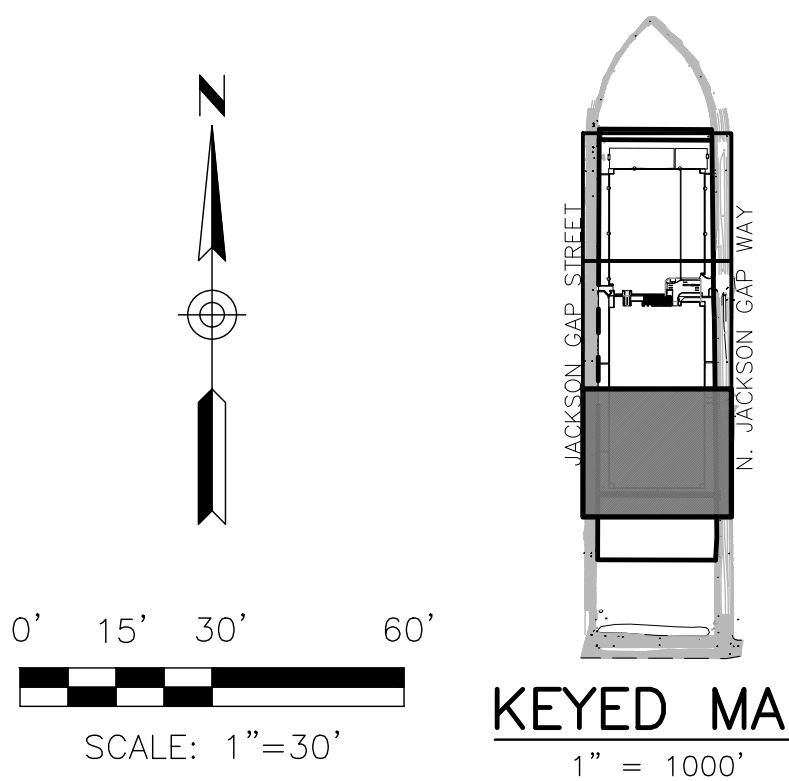
DRAINAGE LEGEND

-
- PROPERTY LINE
- BASIN DELINEATION
- CULVERT
- DESIGN POINT
- A – DRAINAGE BASIN
B – DRAINAGE BASIN ACREAGE
C – 2-YEAR RUNOFF COEFFICIENT
D – 100-YEAR RUNOFF COEFFICIENT
- POND EMERGENCY OVERFLOW PATH
- BASIN EMERGENCY OVERFLOW PATH
- PROPOSED CONTOUR
- EXISTING CONTOUR

BENCHMARK

▲ CITY OF AURORA ID: 356505SW002

NGS CONTROL POINT KNOWN AS "LYNNE" BEING A PUNCH IN THE CENTER OF A STAINLESS-STEEL ROD ENCLOSED IN A 6-INCH PVC PIPE WITH A LOGO LID, ALL SURROUNDED BY A CONCRETE COLLAR FLUSH WITH THE GROUND, HAVING A PUBLISHED ELEVATION OF 5406.21 FEET 1988 NAVD. THE MONUMENT IS LOCATED IN THE NORTHWEST QUARTER OF SECTION 5, TOWNSHIP 36N, RANGE 65E, BEING WESTING N 85°39'39" W, 96.73 FEET FROM THE CENTER QUARTER CORNER OF SAID SECTION 5. THE MONUMENT IS APPROXIMATELY 6.8 FEET NORTH OF THE SOUTH LINE OF THE NORTHWEST QUARTER.



DIBBLE

2696 SOUTH COLORADO BLVD,
SUITE 330
DENVER, CO 80222
PHONE: 303.872.5756
CONTACT: GARRETT WALSTAD, PE

InterPark 

INTERPARK, LLC
200 N. LA SALLE ST. STE. 400
CHICAGO, IL 60601
PHONE: 312.935.2800
CONTACT: PATRICK MARTIN



DCB CONSTRUCTION COMPANY, INC.
909 EAST 62ND AVE.
DENVER, CO 80216
PHONE: 303.287.5525
CONTACT: KATHERINE HAWKINS

ORTEOS PA-11 MIDDLE
DIA PRE-FLIGHT PARKING FACILITY
NWC OF N JACKSON GAP W & E 56TH AVE. AURORA, CO 80019

PRELIMINARY DRAINAGE PLAN

Rev. Date

Issued for

Project No. 1024170

Designed: KEN Drawn: CJN Checked: KEN

Drawing Title
DETAILED DRAINAGE
PLAN 2

SHEET

PDP2.2

FILE:K:\2024\1024170 DIA Pre-Flight Parking Facility\CD\1024170_PDP.dwg DATE:2/26/2025 TIME:12:03 PM (by:garrett.walstad)

"For each pond, label the WQCV, EURV, and 100-year storage volumes and WSELs. Note the allowable release rates, maximum depths, ponding limits, and any other water quality SCM data as needed for the proposed SCM. Label pond side slopes, bottom slopes, trickle channel slopes, etc. as applicable. Label maintenance access, material, and turn radius as applicable." (SDDTC 2.2.4.7)

Maintenance Access to Detention Ponds is not allowed from Collectors and should be provided from within the Site. (Typical both proposed ponds)

Show and label Drainage Easements on Plans. Note that the Drainage Easement for the proposed EDBs will need to encompass any external slopes as well (Typical all sheets, comment appears once)

Easements shown and labeled

Maintenance Access Path

Provide vehicle access to forebay, top of outlet structure, and to spillway as well (refer to SDDTC section 10.7)

Access modified and rollover curb will provide access across pond

DEVELOPED ROUTED SUMMARY TABLE					
DESIGN POINT	BASIN	AREA (ac.)	IMP. (%)	Q ₂ (cfs)	Q ₁₀₀ (cfs)
1	A6-A7 + OS1	7.39	31.9%	2.8	22.1
2	A5-A7 + OS1	12.57	54.4%	8.8	44.0
3	A4-A7 + OS1	16.50	62.0%	12.8	58.0
4	A3-A7 + OS1	17.27	63.2%	12.3	54.8
5	A2	3.45	93.2%	6.1	20.6
6	A1-A7 + OS1	22.09	64.8%	14.0	57.4
7	B6	1.26	59.4%	1.4	6.4
8	B5-B6	1.83	61.2%	2.0	8.9
9	B4-B6	2.69	61.6%	2.7	12.1
10	B3-B6	3.31	55.2%	2.5	12.3
11	B2	4.18	91.2%	7.4	25.0
12	B1-B6	8.14	73.3%	7.7	28.6
13	OS1	4.83	7.3%	0.3	9.4
14	A7	0.20	38.3%	0.1	0.8

DIBBLE

2696 SOUTH COLORADO BLVD,
SUITE 330
DENVER, CO 80222
PHONE: 303.872.5756
CONTACT: GARRETT WALSTAD, PE

InterPark

INTERPARK, LLC
200 N. LA SALLE ST. STE. 400
CHICAGO, IL 60601
PHONE: 312.835.2800
CONTACT: PATRICK MARTIN

dcb
construction company, inc.

DCB CONSTRUCTION COMPANY, INC.
909 EAST 62ND AVE.
DENVER, CO 80216
PHONE: 303.287.5525
CONTACT: KATHERINE HAWKINS

ORTEOS PA-11 MIDDLE
DIA PRE-FLIGHT PARKING FACILITY
NWC OF N JACKSON GAP W & E 56TH AVE, AURORA, CO 80019

PRELIMINARY DRAINAGE PLAN

Issued for _____ Rev. _____ Date _____

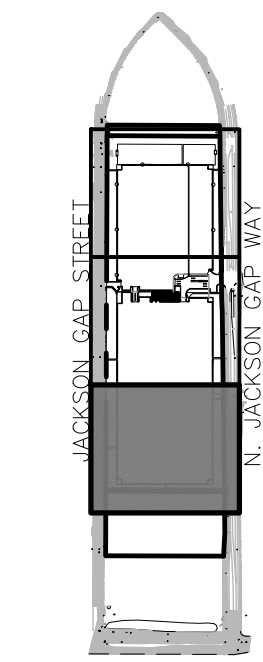
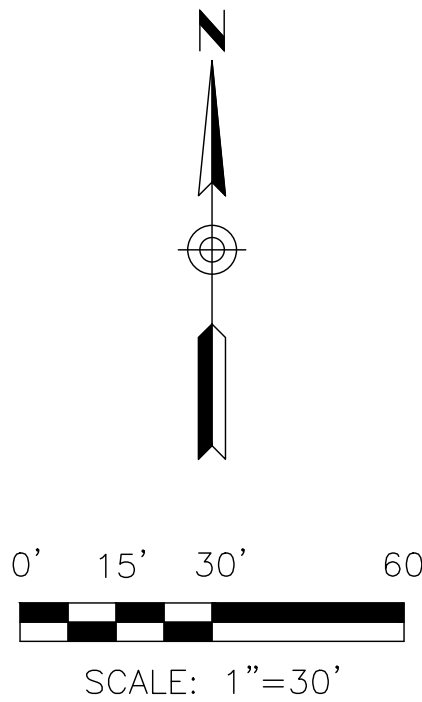
Label classifications of surrounding/adjacent roads (Typical)

Street classifications added throughout plans

- DRAINAGE**
- BASIN DELINEATION
 - CULVERT
 - DESIGN POINT
 - A - DRAINAGE BASIN
 - B - DRAINAGE BASIN ACREAGE
 - C - 2-YEAR RUNOFF COEFFICIENT
 - D - 100-YEAR RUNOFF COEFFICIENT
 - POND EMERGENCY OVERFLOW PATH
 - BASIN EMERGENCY OVERFLOW PATH
 - PROPOSED CONTOUR
 - EXISTING CONTOUR

BENCHMARK

▲ CITY OF AURORA ID: 3S6505SW002
NGS CONTROL POINT KNOWN AS "LYNNE" BEING A PUNCH IN THE CENTER OF A STAINLESS-STEEL ROD ENCLOSED IN A 6-INCH PVC PIPE WITH A LOGO LID, ALL SURROUNDED BY A CONCRETE COLLAR FLUSH WITH THE GROUND, HAVING A PUBLISHED ELEVATION OF 5406.21 FEET 1988 NAVD. THE MONUMENT IS LOCATED IN THE NORTHWEST QUARTER OF SECTION 5, TOWNSHIP 3 SOUTH, RANGE 65 WEST BEING N 85°39'39" W, 96.73 FEET FROM THE CENTER QUARTER CORNER OF SAID SECTION 5. THE MONUMENT IS APPROXIMATELY 6.8 FEET NORTH OF THE SOUTH LINE OF THE NORTHWEST QUARTER.



KEYED MAP
1" = 1000'

MATCH LINE SEE SHEET PDP2.2

PDP2.3

Project No. 1024170

Designed: KEN Drawn: CJN Checked: KEN

Drawing Title
**DETAILED DRAINAGE
PLAN 3**

SHEET