

2/25/2025

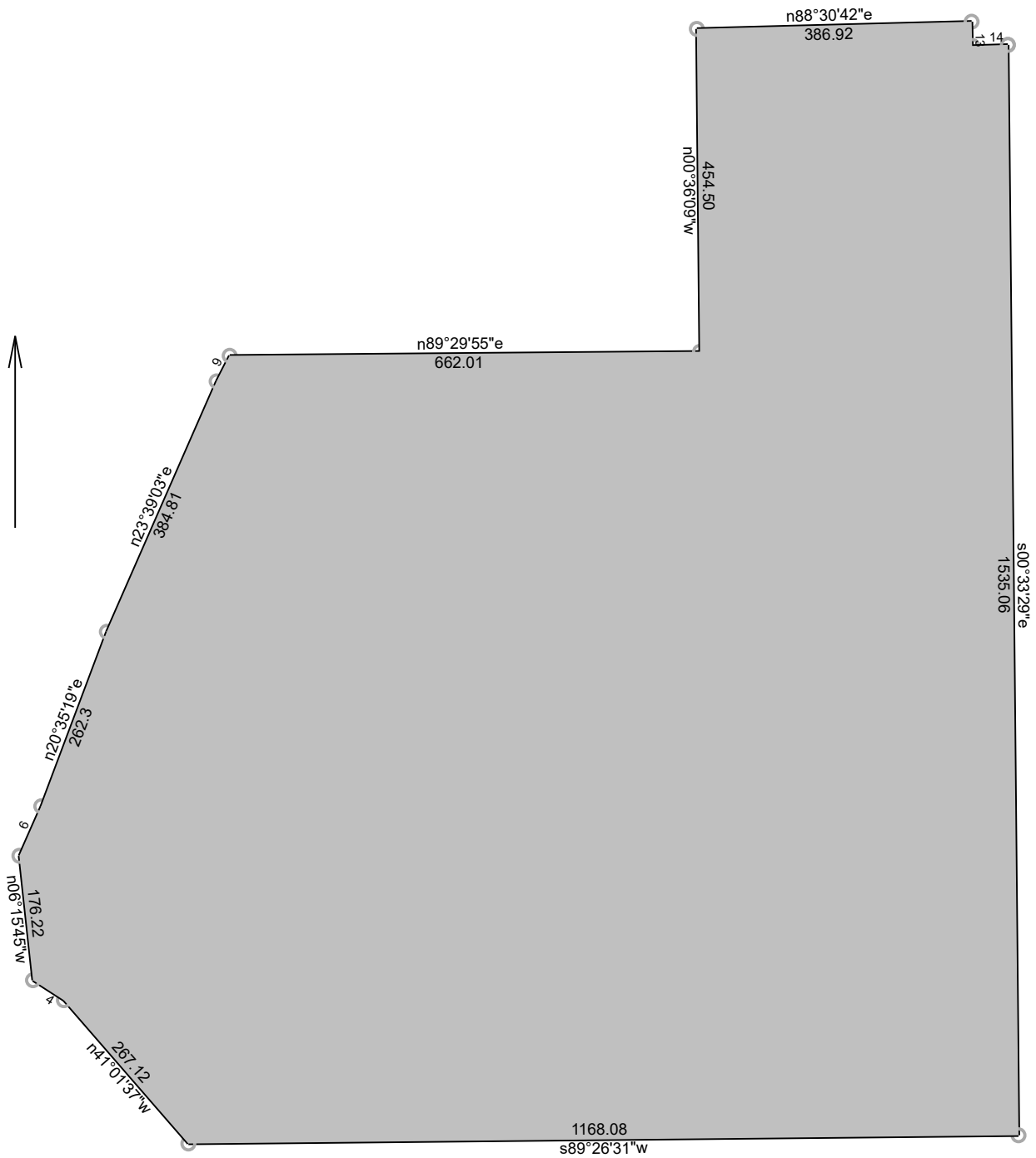
Scale: 1 inch= 100 feet

File: Tract B.ndp

Tract 1: 2.7873 Acres (121417 Sq. Feet), Closure: n00.0000e 0.00 ft. (1/409241), Perimeter=1690 ft.

01 n41.0137w 178.96
02 n56.5406w 51.87
03 n06.1545w 176.22
04 n23.5743e 76.24
05 n20.3519e 262.30
06 n23.3903e 108.39
07 s66.2052e 11.73
08 Rt, r=91.00, delta=065.4723, arc=104.49, chord=s33.2710e 98.84
09 s00.3329e 530.04

10 Lt, r=39.00, delta=040.0259, arc=27.26, chord=s20.3458e 26.71
11 s40.3628e 40.06
12 s48.5824w 122.48



2/24/2025

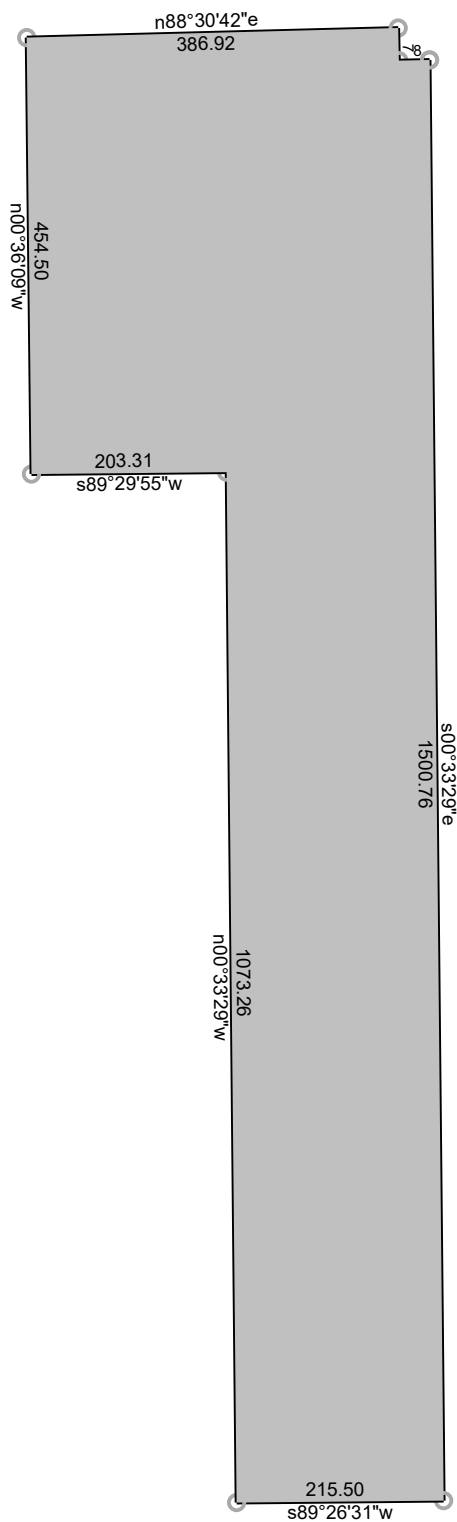
Scale: 1 inch= 225 feet

File: Overall.ndp

Tract 1: 37.1066 Acres, Closure: n00.0000e 0.00 ft. (1/999999), Perimeter=5550 ft.

01 s00.3329e 1535.06
 02 s89.2631w 1168.08
 03 n41.0137w 267.12
 04 n56.5406w 51.87
 05 n06.1545w 176.22
 06 n23.5743e 76.24
 07 n20.3519e 262.3
 08 n23.3903e 384.81
 09 n27.0356e 40.45
 10 n89.2955e 662.01

11 n00.3609w 454.50
 12 n88.3042e 386.92
 13 s01.2918e 34.00
 14 n88.3042e 50.25



2/25/2025

Scale: 1 inch= 200 feet

File: Lot 1, Block 1.ndp

Tract 1: 9.6906 Acres (422121 Sq. Feet), Closure: s56.3636w 0.01 ft. (1/749275), Perimeter=3900 ft.

01 s00.3329e 1500.76

08 n88.3042e 31.75

02 s89.2631w 215.50

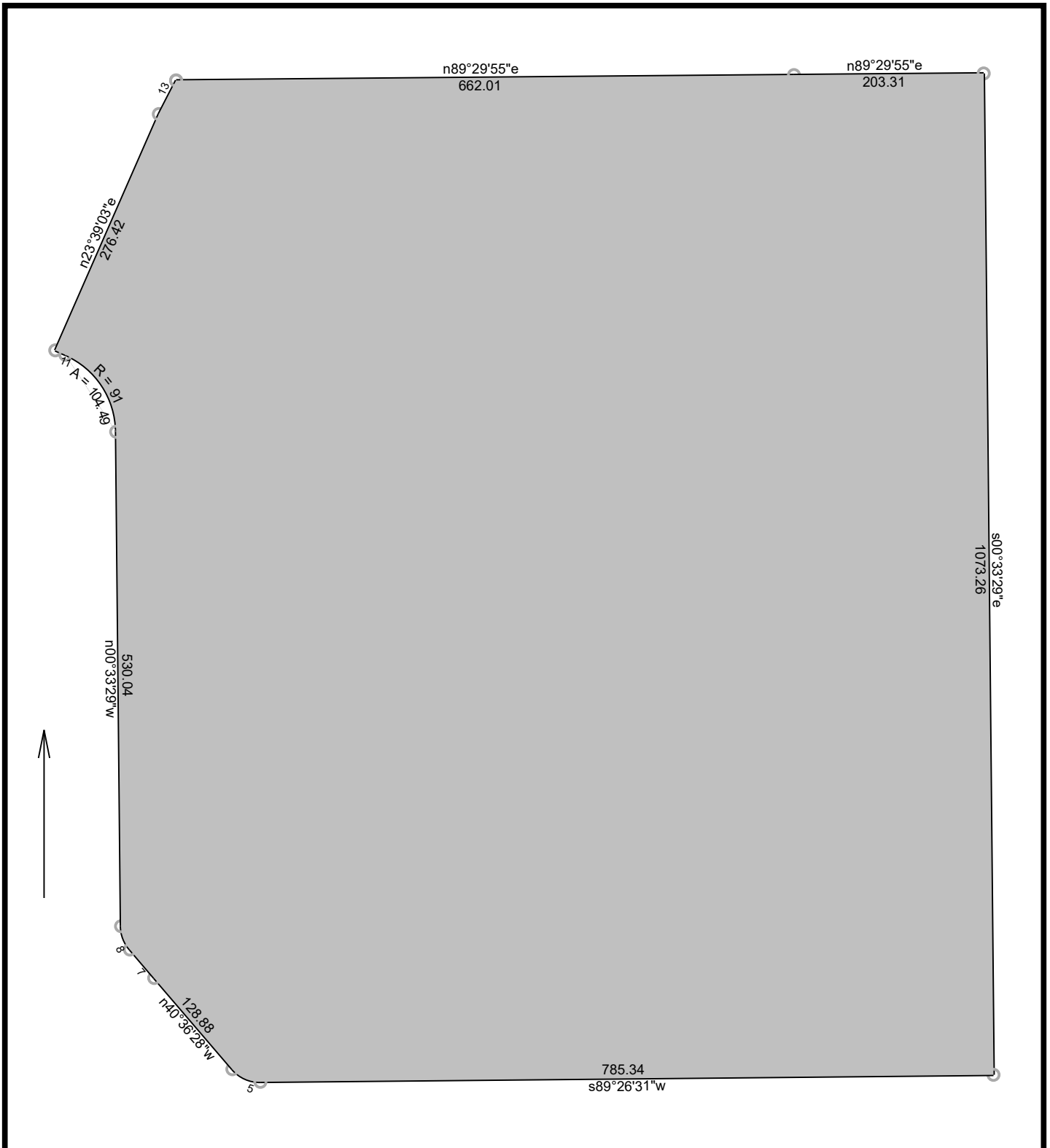
03 n00.3329w 1073.26

04 s89.2955w 203.31

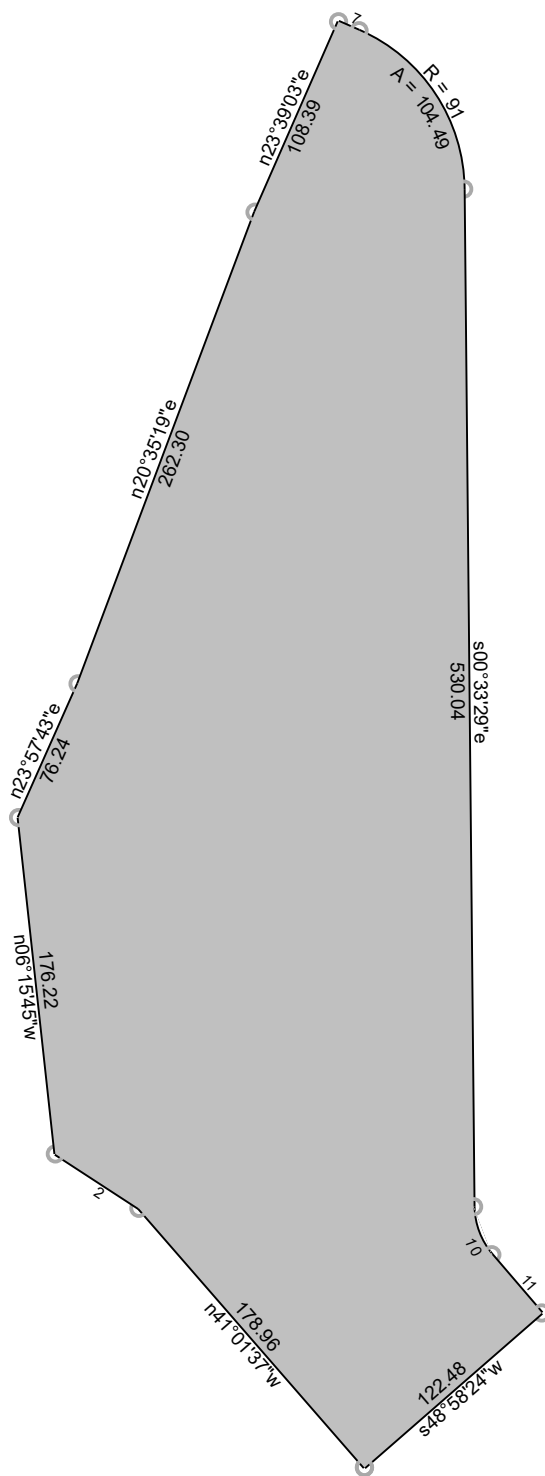
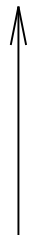
05 n00.3609w 454.50

06 n88.3042e 386.92

07 s01.2918e 34.00



Scale: 1 inch= 150 feet		File: Lot 2, Block 1.ndp	2/25/2025
Tract 1: 22.7999 Acres, Closure: n00.0000e 0.00 ft. (1/999999), Perimeter=3917 ft.			
01 n89.2955e 662.01	10 Lt, r=91.00, delta=065.4723, arc=104.49, chord=n33.2710w 98.84		
02 n89.2955e 203.31	11 n66.2052w 11.73		
03 s00.3329e 1073.26	12 n23.3903e 276.42		
04 s89.2631w 785.34	13 n27.0356e 40.45		
05 Rt, r=39.00, delta=049.5701, arc=34.00, chord=n65.3458w 32.93			
06 n40.3628w 128.88			
07 n40.3628w 40.06			
08 Rt, r=39.00, delta=040.0259, arc=27.26, chord=n20.3458w 26.71			
09 n00.3329w 530.04			



2/25/2025

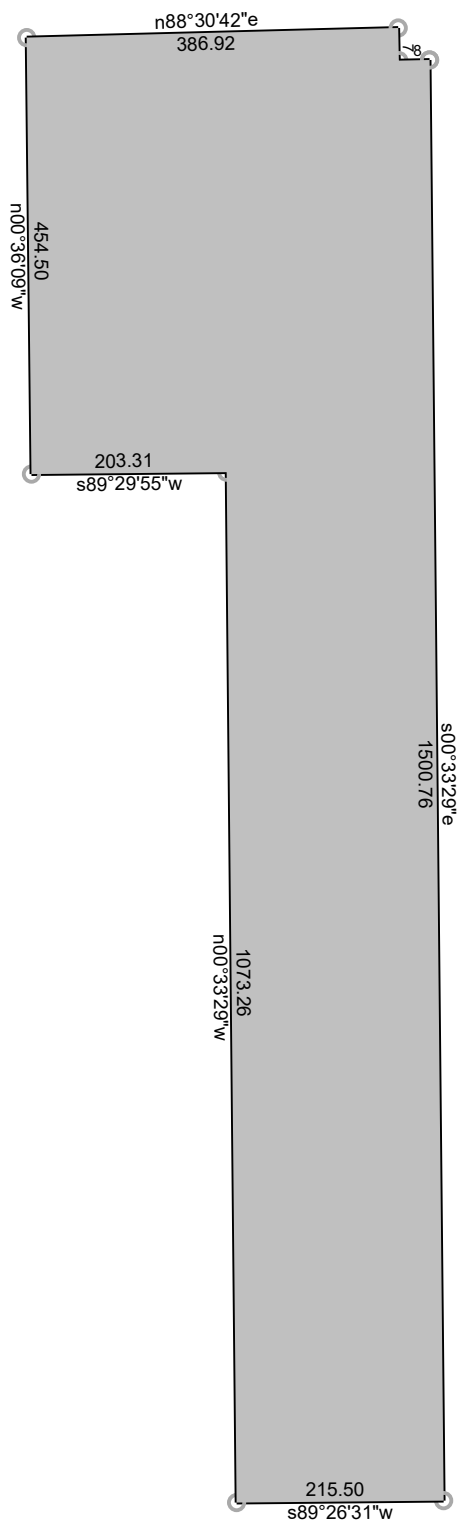
Scale: 1 inch= 100 feet

File: Tract B.ndp

Tract 1: 2.7873 Acres (121417 Sq. Feet), Closure: n00.0000e 0.00 ft. (1/409241), Perimeter=1690 ft.

01 n41.0137w 178.96
02 n56.5406w 51.87
03 n06.1545w 176.22
04 n23.5743e 76.24
05 n20.3519e 262.30
06 n23.3903e 108.39
07 s66.2052e 11.73
08 Rt, r=91.00, delta=065.4723, arc=104.49, chord=s33.2710e 98.84
09 s00.3329e 530.04

10 Lt, r=39.00, delta=040.0259, arc=27.26, chord=s20.3458e 26.71
11 s40.3628e 40.06
12 s48.5824w 122.48



2/25/2025

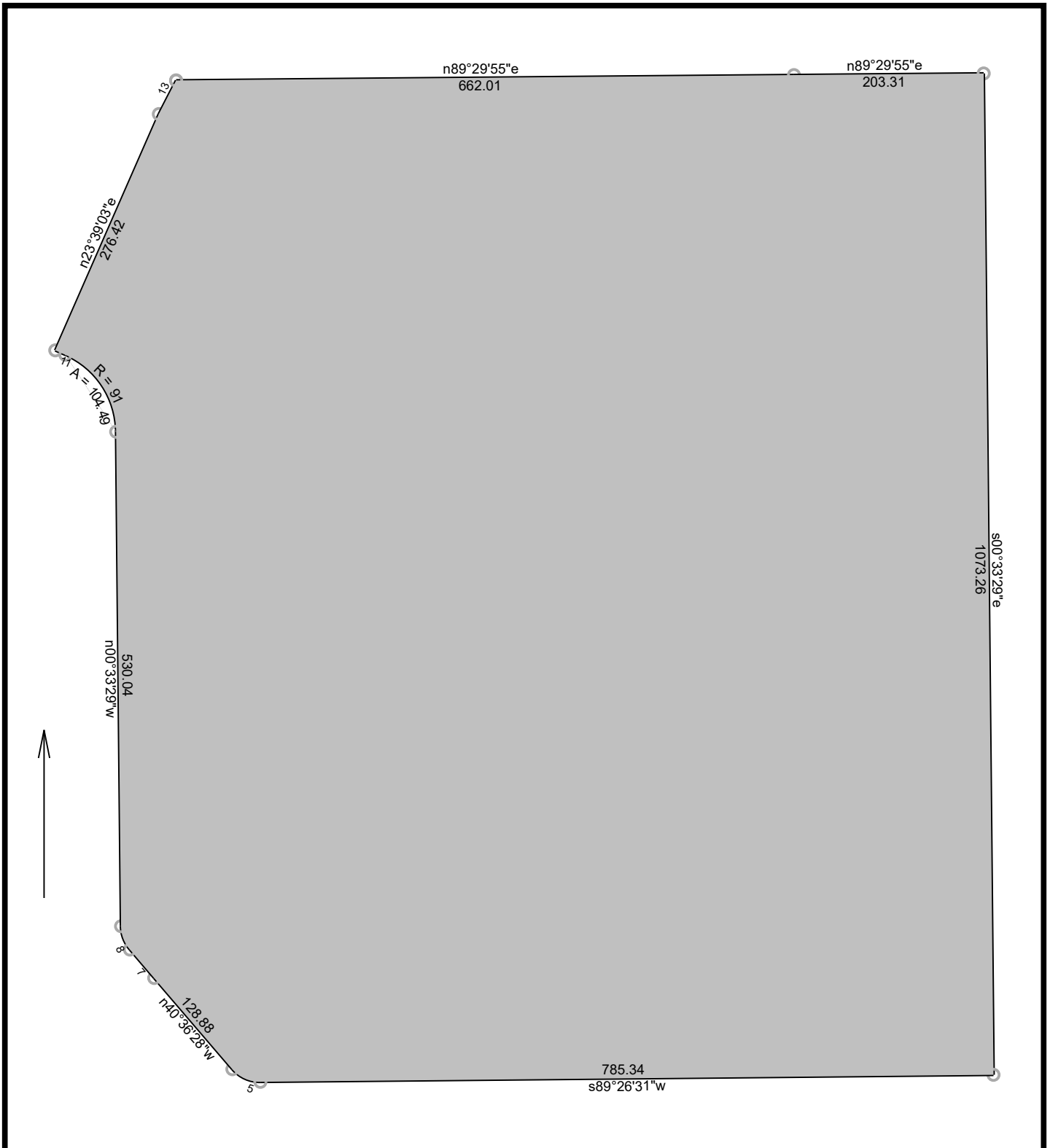
Scale: 1 inch= 200 feet

File: Lot 1, Block 1.ndp

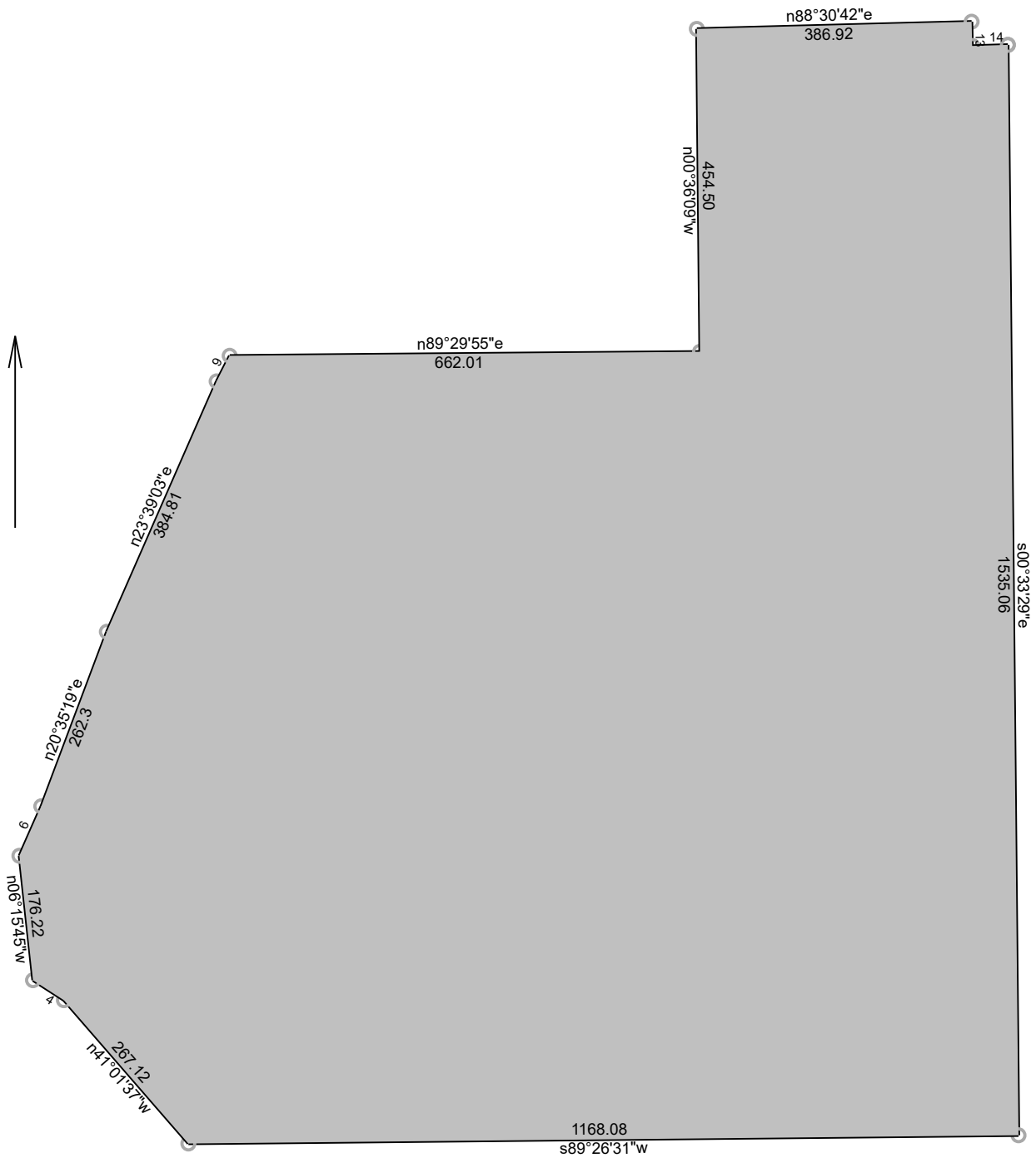
Tract 1: 9.6906 Acres (422121 Sq. Feet), Closure: s56.3636w 0.01 ft. (1/749275), Perimeter=3900 ft.

01 s00.3329e 1500.76
02 s89.2631w 215.50
03 n00.3329w 1073.26
04 s89.2955w 203.31
05 n00.3609w 454.50
06 n88.3042e 386.92
07 s01.2918e 34.00

08 n88.3042e 31.75



Scale: 1 inch= 150 feet		File: Lot 2, Block 1.ndp	2/25/2025
Tract 1: 22.7999 Acres, Closure: n00.0000e 0.00 ft. (1/999999), Perimeter=3917 ft.			
01 n89.2955e 662.01	10 Lt, r=91.00, delta=065.4723, arc=104.49, chord=n33.2710w 98.84		
02 n89.2955e 203.31	11 n66.2052w 11.73		
03 s00.3329e 1073.26	12 n23.3903e 276.42		
04 s89.2631w 785.34	13 n27.0356e 40.45		
05 Rt, r=39.00, delta=049.5701, arc=34.00, chord=n65.3458w 32.93			
06 n40.3628w 128.88			
07 n40.3628w 40.06			
08 Rt, r=39.00, delta=040.0259, arc=27.26, chord=n20.3458w 26.71			
09 n00.3329w 530.04			



2/24/2025

Scale: 1 inch= 225 feet

File: Overall.ndp

Tract 1: 37.1066 Acres, Closure: n00.0000e 0.00 ft. (1/999999), Perimeter=5550 ft.

01 s00.3329e 1535.06
 02 s89.2631w 1168.08
 03 n41.0137w 267.12
 04 n56.5406w 51.87
 05 n06.1545w 176.22
 06 n23.5743e 76.24
 07 n20.3519e 262.3
 08 n23.3903e 384.81
 09 n27.0356e 40.45
 10 n89.2955e 662.01

11 n00.3609w 454.50
 12 n88.3042e 386.92
 13 s01.2918e 34.00
 14 n88.3042e 50.25

