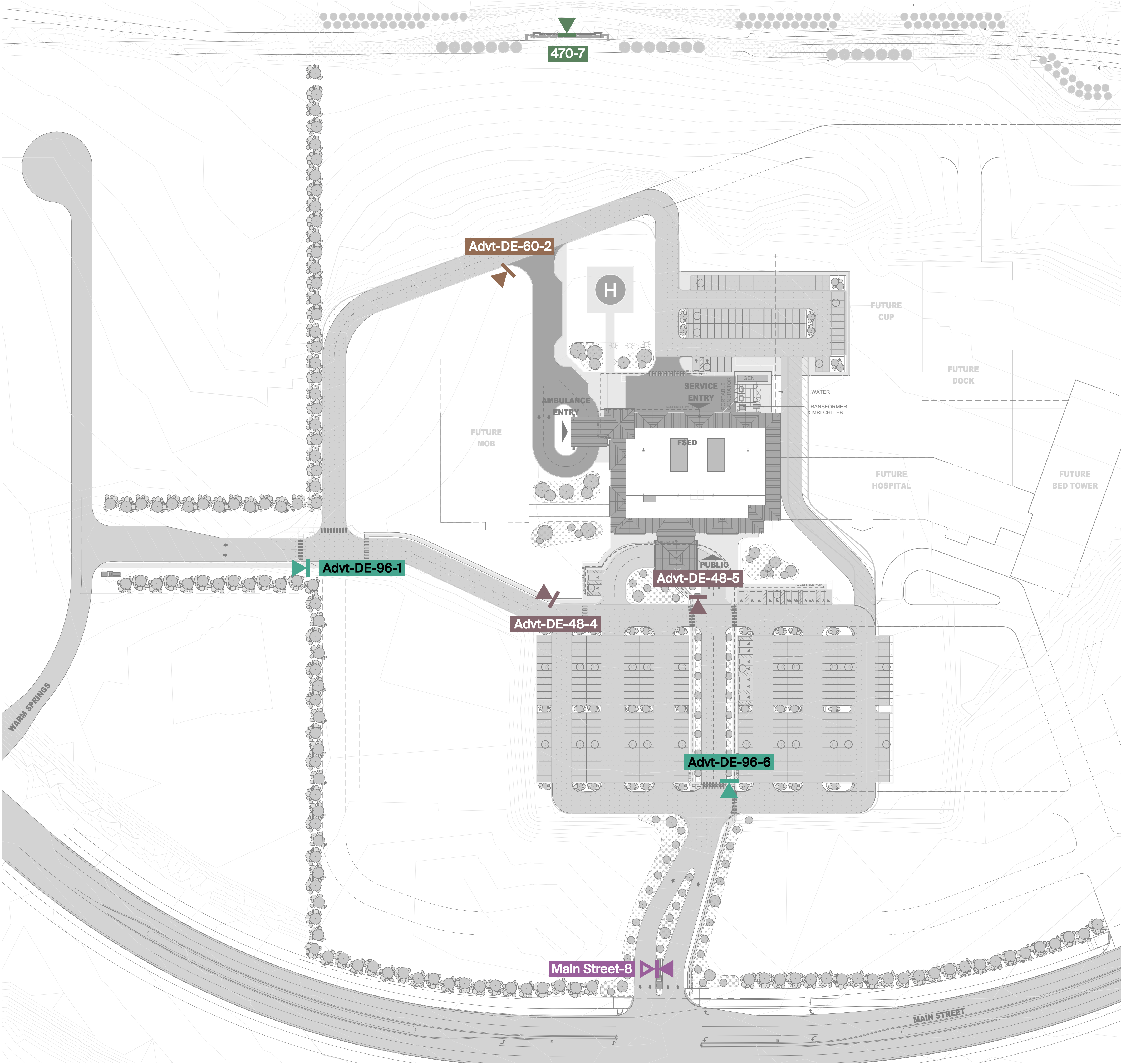


Advent Health

Aurora Highlands Exterior Sign Package

March 25, 2025




AdventHealth Aurora Highlands
Exterior Sign Package
3405 N Main Street, Aurora, CO 80019

ISSUANCES		
NO.	DESCRIPTION	DATE
1	CD	02.06.25
2	Revised SQ FT	02.07.25
3	Resize 470 Monument	03.25.25
PROJECT NO.	<div>NOT FOR CONSTRUCTION</div>	
024-039		
DRAWN BY		
ML		
CHECKED BY		
AE		
Location Plan		
2		



3405 N Main Street, Aurora, CO 80019

PROJECT NO. 024-039	
DRAWN BY	
ML	
CHECKED BY	
AE	

470 Highway Sign Monument Sign	3
-----------------------------------	---



	Type	Actual SQ FT	SQ FT Allowed by Zoning
	Main Street	121	100'
	470	645	
	Total	831	100'

Sign ID	Message	Description	Artwork	Qty
EXT-FSED - FSED				
Advt- DE-96-1		DE-96-IL		1
Advt- DE-60-2		DE-60-IL		1
Advt- DE-48-4		DE-48-NIL		1
Advt- DE-48-5		DE-48-NIL		1

Sign ID	Message	Description	Artwork	Qty
Advt- DE-96-6		DE-96-IL		1
470-7		Monument		1
Main Street-8		Monument		1
Subtotal:				7



HKS
999 18th St, #2255N
Denver, CO 80202
www.hksinc.com

AdventHealth Aurora Highlands
Exterior Sign Package
3405 N Main Street, Aurora, CO 80019

ISSUANCES

NO.	DESCRIPTION	DATE
1	CD	02.06.25
2	Revised SQ FT	02.07.25
3	Resize 470 Monument	03.25.25

PROJECT NO. 024-039	<div>NOT FOR CONSTRUCTION</div>
DRAWN BY ML	
CHECKED BY AE	

Directional Signage



Denver, CO 80202
www.hksinc.com

3405 N Main Street, Aurora, CO 80019

5





AdventHealth Aurora Highlands
Exterior Sign Package
3405 N Main Street, Aurora, CO 80019

PROJECT NO.	024-039
DRAWN BY	ML
CHECKED BY	AE

NOT FOR
CONSTRUCTION

6



REV 10.09.18
Vinyl decorate
extrusion covers

NOTES:

- [illegible]

4. .125" BENT ARMED ALUMINUM BASE/EXTRUSION COVER, PAINT FINISH AH BLUE, SEMI-GLOSS FINISH. ATTACH AT SIDES WITH COUNTERSUNK FLATHEAD STAINLESS STEEL SCREWS. PAINT HEADS TO MATCH. 5. 2" ROUND STRUCTURAL STEEL TUBES TO SUPPORT TUBE TO BE SIZED BY A LICENSED STRUCTURAL ENGINEER TO MEET OR EXCEED ALL APPLICABLE LOCAL, STATE AND NATIONAL CODES. MATCH PLATE ATTACH TO TUBES WITH 1/2" DIA. 1/4" THREADED STUDS WELDED TO TOP FOR ATTACHMENT TO ALUMINUM ANGLE FRAME. IN CONCRETE FOUNDATION, PAINT FINISH TUBE WITH LIGHT ENHANCEMENT PAINT.
6. 1/2" STEEL TOP PLATE AS REQUIRED, PRE-DRILL HOLES IN PLATE TO MATCH 1/2" DIA. 1/4" THREADED STUDS WELDED TO ANGLE FRAME TOP MEMBER. BOLT ATTACH TO STEEL PLATE.
7. USE SIGNCOMP EXTRUSION #2107 FLEX FACE FULL BLEED RETAINER, MECHANICALLY ATTACH TO ALUMINUM ANGLE FRAME. USE 1/2" DIA. 1/4" THREADED STUDS AT CORNERS. USE CORNER KEYS AS REQUIRED.

8. USE 1" x 1/2" x 1/2" .125" ALUMINUM GRATE FRAME AT PERIMETER, MITER, CUT, WELD AND GRIND SMOOTH TO MATCH EXISTING GRATE. GRATE TO BE PROPOSED SPECIFICATIONS WHITE, SEMI-GLOSS FINISH.
9. .125" ALUMINUM GRATE FRAMING AS REQUIRED.
10. WELD TO STEEL SUPPORT TUBES. WELD TO STEEL SUPPORT BOLT ATTACH TO STEEL ANGLE(S) WELDED TO STEEL SUPPORT TUBES.
11. WELD TO STEEL ANGLE(S) WELDED TO STEEL SUPPORT TUBES TO PROVIDE ATTACHMENT POINTS FOR ALUMINUM ANGLE FRAMING.
12. PROVIDE LIGHT SOURCE TO BE AGILIGHT RETRO RAYZ 700 AS REQUIRED TO PROVIDE EVEN ILLUMINATION ACROSS SIGN FACE WITHOUT HOT SPOTS OR SHADOWS. LED LIGHT SOURCE TO BE AGILIGHT RETRO RAYZ 700 FROM MODULE LAYOUTS AND POWER SUPPLY SPECIFICATIONS, 6500K WHITE.
13. PROVIDE LIGHT SOURCE IN U.S. APPROVED RACEWAY AS REQUIRED.
14. ALL STRUCTURAL COMPONENTS INCLUDING, BUT NOT LIMITED TO THE CONCRETE FOUNDATION, ANCHOR BOLTS, STEEL TUBES, STEEL ANGLE FRAMING, TO BE DESIGNED BY A LICENSED STRUCTURAL ENGINEER TO MEET OR EXCEED ALL APPLICABLE LOCAL, STATE, AND FEDERAL REQUIREMENTS.

GENERAL NOTES:

- FINAL SIZING FOR ALL STRUCTURAL MEMBERS (I.E. COLUMNS, MATCH PLATES, CONNECTION BOLTS, ANCHOR BOLTS, FOUNDATIONS AND REINFORCEMENT) TO BE SIZED BY A LICENSED ENGINEER TO MEET OR EXCEED ALL APPLICABLE LOCAL, STATE, AND FEDERAL CODES.
- FABRICATOR IS RESPONSIBLE FOR THE PREVENTION OF ANY LIGHT LEAKS.
- LEADS FROM BACK OF ILLUMINATED LETTERS / SYMBOL SHALL BE A MINIMUM OF 6'-0" IN LENGTH MEASURED FROM THE BACK SURFACE OF THE LETTERS / SYMBOL.
- PAINT INTERIORS OF ALL CABINETS W/ SPRAY-LAT STAIN WHITE LIGHT ENHANCEMENT PAINT.
- ALL PAINT TO BE TWO-PART POLYURETHANE.
- COLOR FILM TO BE MATCHED IN 3M #3632 SERIES FILM.

MATERIAL SPECIFICATIONS:

PAINT:
 AH DARK BLUE: -MP74410 R174561 (PMS 7691)
 AH LIGHT BLUE: -MP77101 R174561 (PMS 299)
 AH DARK GREEN: -MP76487 R174561 (PMS 7720)
 AH GREEN: -MP77120 R174561 (PMS 376)

AM DK GRAY: -MP95649 R176076
AM RED: -MP11140 R176076

AH RED: -RP 3249 K179001
 AH WHITE: -MATTHEWS NATURAL WHITE
OPAQUE FILM:
 AH WHITE: -3M 180-10
 AH DK. BLUE DUAL COLOR FILM: 3M TO MATCH PMS 769
OPAQUE FILM FOR WINDOW VINYL:
 AH WHITE: -3M 7725-10 WHITE

TRANSLUCENT FILM:	
AH DARK BLUE:	-MIRATEC SYSTEMS
AH LIGHT BLUE:	-MIRATEC SYSTEMS
AH DARK GREEN:	-MIRATEC SYSTEMS
AH GREEN:	
AH EMERGENCY RED:	-MIRATEC SYSTEMS
AH WHITE:	-3M 3630-20 WHITE
DIFFUSER FILM:	-3M 3635-20 WHITE

REFLECTIVE FILM: 43M 680*10 WHITE

Illuminated Directional Section Details

These documents are for design intent and shall be used only as a guide to produce the finished sizes, appearances and functions shown. Nothing contained in these documents shall be construed as a design for any engineered element. The fabricator/contractor shall be responsible for all structural, electrical, mechanical and foundation engineering. See General Specifications for additional requirements. These documents were not

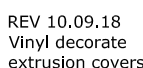
produced under an architectural services agreement. These drawings are part of an original unpublished design by Monigle Associates, Inc. The detailing and information contained on these pages shall not be reproduced, copied or utilized except for the specific project for which they were created, without previous written authorization from Monigle Associates, Inc. © Monigle Associates, Inc. "All Rights Reserved" 150 Adams Street - Denver, Colorado 80206

Client:	ADVENTHEALTH	Checked By:	
Job Number:	969	Approval:	
Drawn By:	JML	Scale:	As Indicated
Date:	04.16.18		

Rev No:	03.08.2018
Rev No:2	09.28.18
Rev No:	
Rev No:	

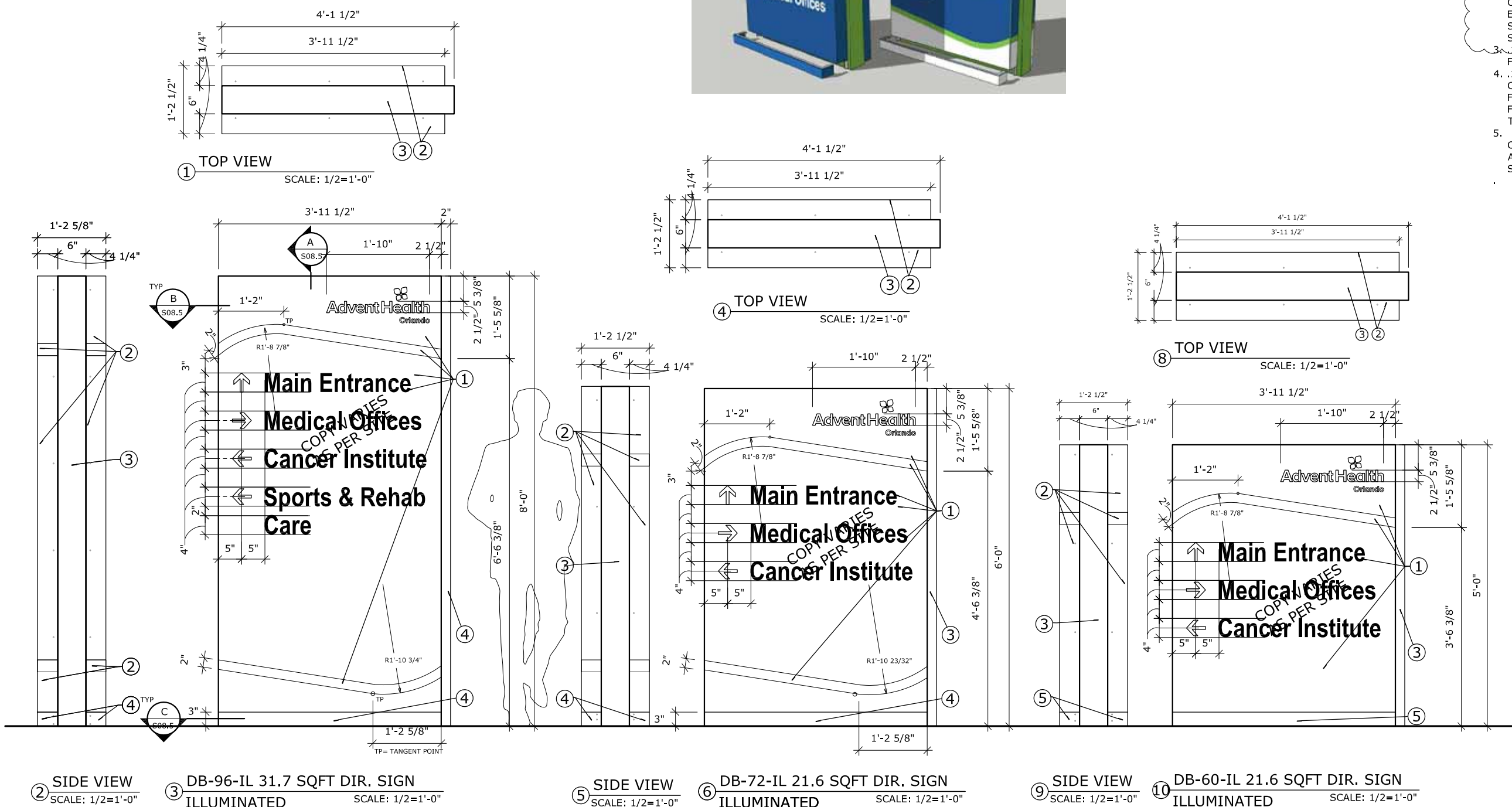
S8.5

monigle



NOTES - FLEXFACE WITHOUT EMERGENCY

- [illegible]



GENERAL NOTES:

- FINAL SIZING FOR ALL STRUCTURAL MEMBERS (I.E. COLUMNS, MATCH PLATES, CONNECTION BOLTS, ANCHOR BOLTS, FOUNDATIONS AND REINFORCEMENT) TO BE SIZED BY A LICENSED ENGINEER TO MEET OR EXCEED ALL APPLICABLE LOCAL, STATE, AND FEDERAL CODES.
- FABRICATOR IS RESPONSIBLE FOR THE PREVENTION OF ANY LIGHT LEAKS.
- LEADS FROM BACK OF ILLUMINATED LETTERS / SYMBOL SHALL BE A MINIMUM OF 6'-0" IN LENGTH MEASURED FROM THE BACK SURFACE OF THE LETTERS / SYMBOL.
- PAINT INTERIORS OF ALL CABINETS W/ SPRAY-LAT STAR BRITTE WHITE LIGHT ENHANCEMENT PAINT.
- ALL PAINT TO BE TWO-PART POLYURETHANE.
- COLOR FILM TO BE MATCHED IN 3M #3632 SERIES FILM.

MATERIAL SPECIFICATIONS:

PAIN:
 AH DARK BLUE: -MP74410 R174561 (PMS 7691)
 AH LIGHT BLUE: -MP77101 R174561 (PMS 299)
 AH DARK GREEN: -MP76487 R174561 (PMS 7720)
 AH GREEN: -MP77120 R174561 (PMS 376)
 AH DK GRAY: -MP95649 R176076 (PMS 430)
 AH RED: -MP73249 R174561

AH WHITE: -MATTHEWS NATURAL WHITE
OPAQUE FILM:
 AH WHITE: -3M 180-10
 AH DK. BLUE DUAL COLOR FILM: 3M TO MATCH PMS 7691
OPAQUE FILM FOR WINDOW VINYLs:
 AH WHITE: -3M 7725-10 WHITE

TRANSLUCENT FILM:
 AH DARK BLUE: -MIRATEC SYSTEMS
 AH LIGHT BLUE: -MIRATEC SYSTEMS
 AH DARK GREEN: -MIRATEC SYSTEMS
 AH GREEN:
 AH EMERGENCY RED: -MIRATEC SYSTEMS

AH WHITE: -3M 3630-20 WHITE
 DIFFUSER FILM: -3M 3635-70 WHITE
 REFLECTIVE FILM: -3M 680-10 WHITE

Illuminated Directional

These documents are for design intent and shall be used only as a guide to produce the finished sizes, appearances and functions shown. Nothing contained in these documents shall be construed as a design for any engineered element. The fabricator/contractor shall be responsible for all structural, electrical, mechanical and foundation engineering. See General Specifications for additional requirements. These documents were not

produced under an architectural services agreement. These drawings are part of an original unpublished design by Monigle Associates, Inc. The detailing and information contained on these pages shall not be reproduced, copied or utilized except for the specific project for which they were created, without previous written authorization from Monigle Associates, Inc. © Monigle Associates, Inc. "All Rights Reserved" 150 Adams Street - Denver, Colorado 80206

Client:	ADVENTHEALTH	Checked By:	
Job Number:	969	Approval:	
Drawn By:	JML	Scale:	As indicated
Date:	04.16.18		

Rev No:	03.08.2018
Rev No:2	09.28.18
Rev No:	
Rev No:	

S8.3

monigle



AdventHealth Aurora Highlands
Exterior Sign Package
3405 N Main Street, Aurora, CO 80019

ISSUANCES

NO.	DESCRIPTION	DATE
1	CD	02.06.25
2	Revised SQ FT	02.07.25
3	Resize 470 Monument	03.25.25

PROJECT NO.
024-039

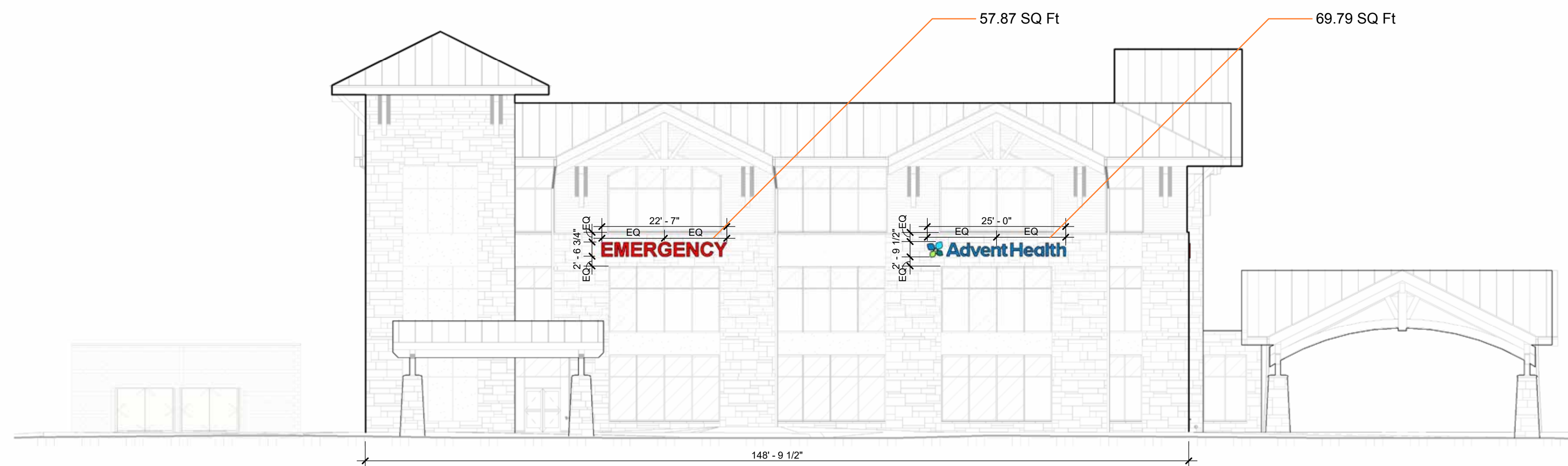
DRAWN BY

CHECKED BY

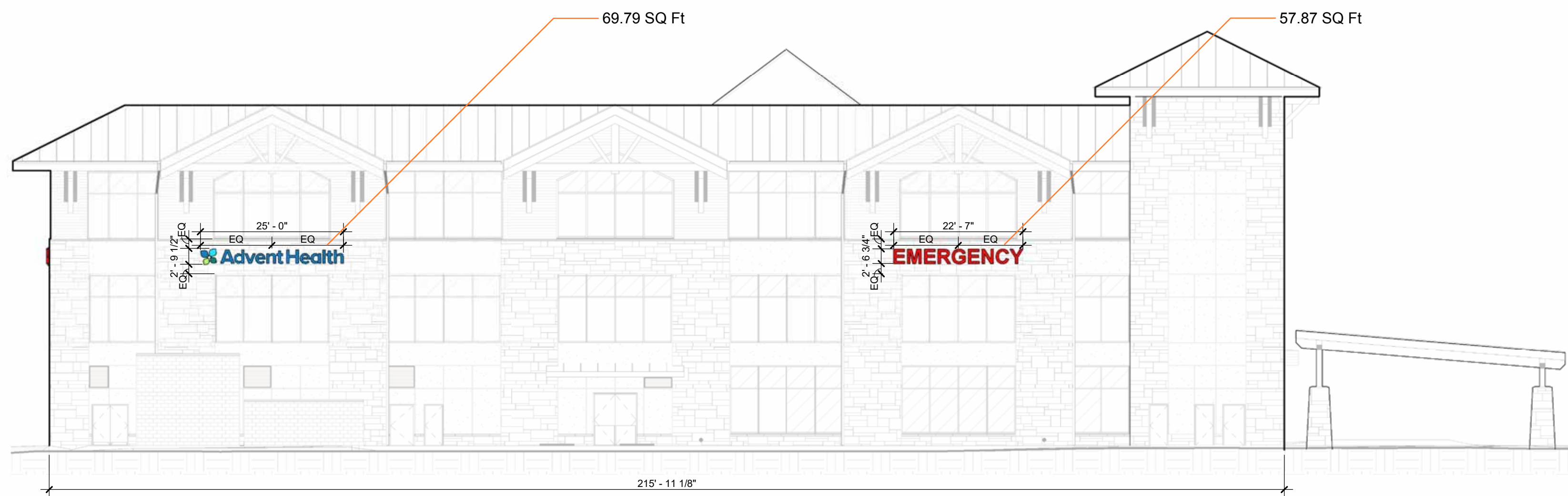
NOT FOR
CONSTRUCTION

On-Building Signage

7



02 SOUTH OVERALL SIGNAGE ELEVATION



01 WEST OVERALL SIGNAGE ELEVATION

Square Foot Calculations				
	Type	Actual SQ FT	Linear FT of Building	SQ FT Allowed by Zoning
South	Logo	69.79	149'	224
	Emergency	57.87		
	Total	127.66		
West	Logo	69.79	216'	208
	Emergency	57.87		
	Total	127.66		

AdventHealth Aurora Highlands
Exterior Sign Package
3405 N Main Street, Aurora, CO 80019

ISSUANCES

NO.	DESCRIPTION	DATE
1	CD	02.06.25
2	Revised SQ FT	02.07.25
3	Resize 470 Monument	03.25.25

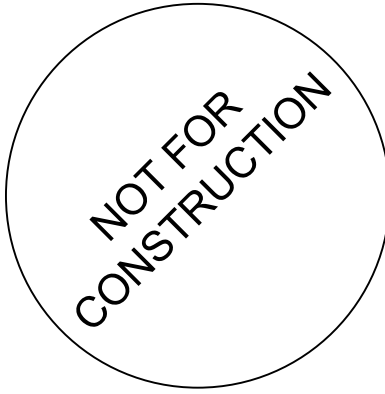
PROJECT NO.
024-039

DRAWN BY

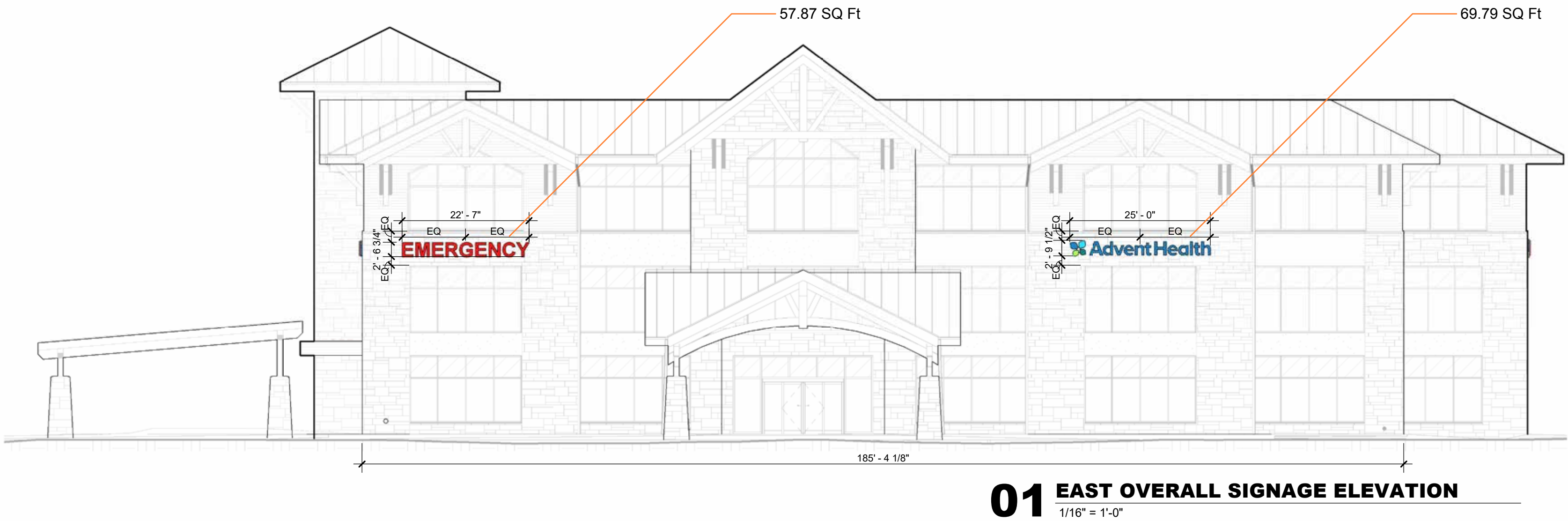
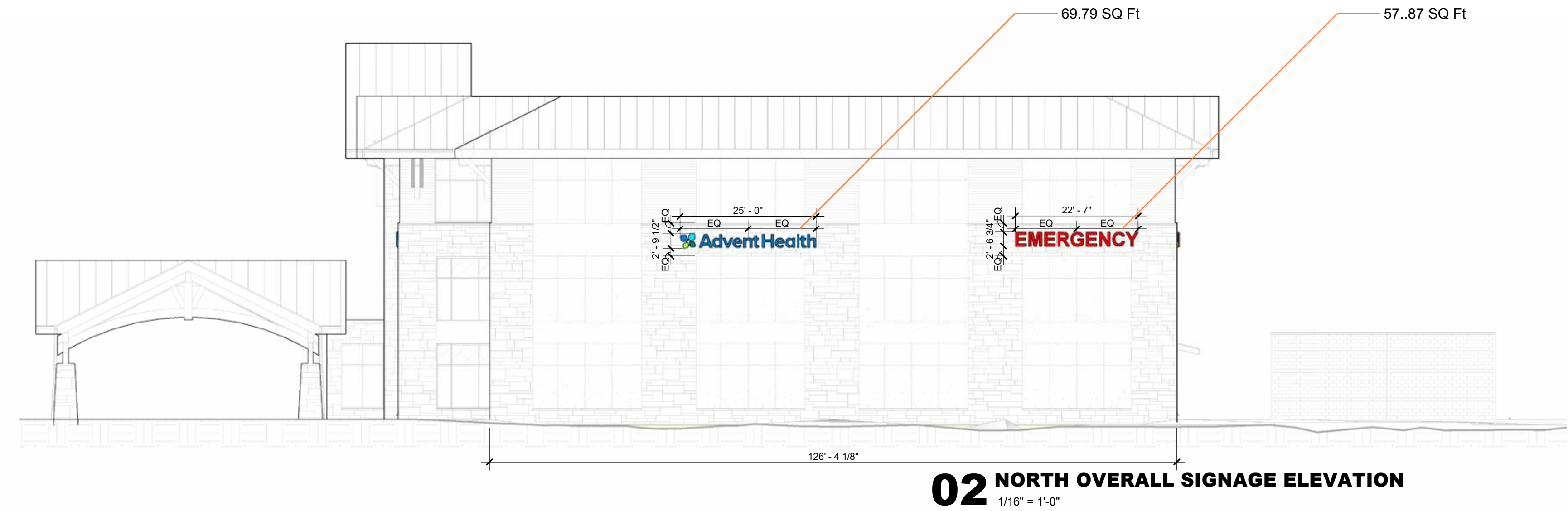
ML

CHECKED BY

AE



On-Building Signage



Number of permitted signs: 5
Total number of signs: 10 (On-building and monument)
Minimum sign area: 80 SQ FT
Maximum total sign area: 600 SQ FT
Maximum individual sign area: 200 SQ FT

Square Foot Calculations				
	Type	Actual SQ FT	Linear FT of Building	SQ FT Allowed by Zoning
North	Logo	69.79	126'	113
	Emergency	57.87		
	Total	127.66		
East	Logo	69.79	185'	242
	Emergency	57.87		
	Total	127.66		

