

# WASHINGTON PRIME GROUP™

## RESTAURANT BOLT-ON DESIGN CONCEPT

TOWN CENTER AT AURORA | Aurora, CO

21.0001952.000

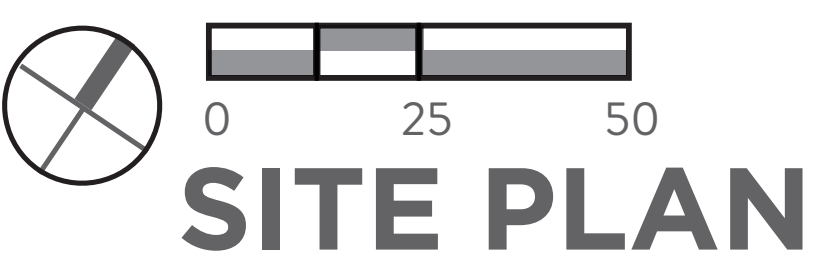
FEBRUARY 23, 2022

# NELSON





- NOTES**
- 1 Sign with concrete seating plinth for instagram moment
  - 2 Seat wall adjacent to passenger drop off
  - 3 Screened Loading Dock
  - 4 New Stair/Elevator
  - 5 Gathering spot with outdoor seating and fire pit
  - 6 Green with seating and festoon lighting
  - 7 Restaurant outdoor seating
  - 8 Sculpture
  - 9 Farmer's Market Zone
  - 10 Mall Entrance
  - 11 Sprinkler Room







Perspective Mall entry





Perspective new Mall entrance at night





Perspective new Mall entrance at day





elevation



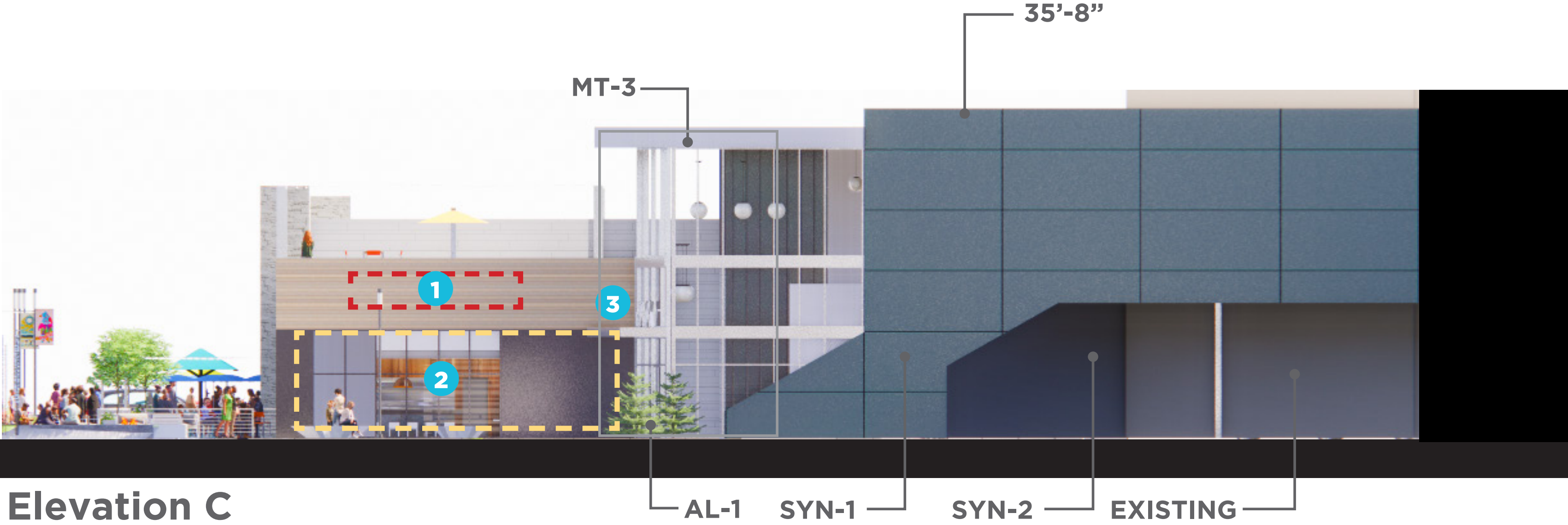
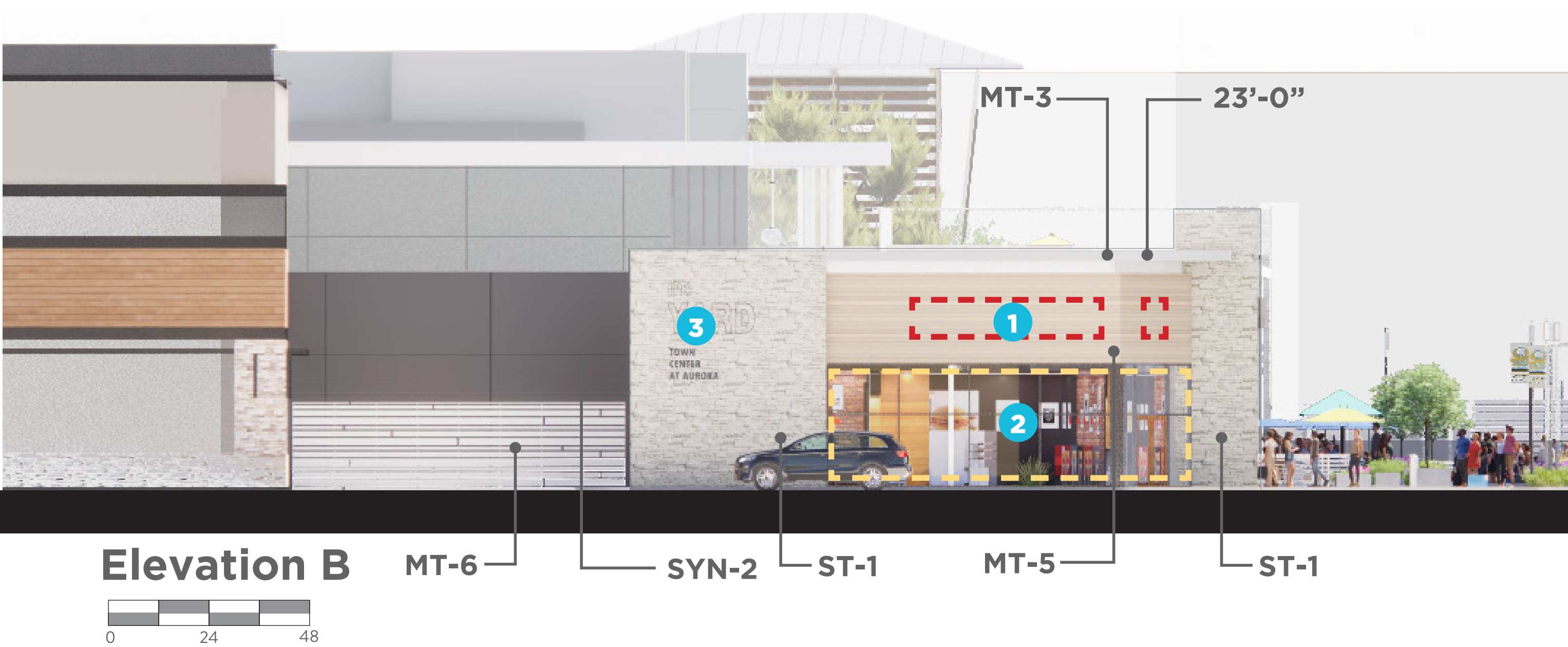
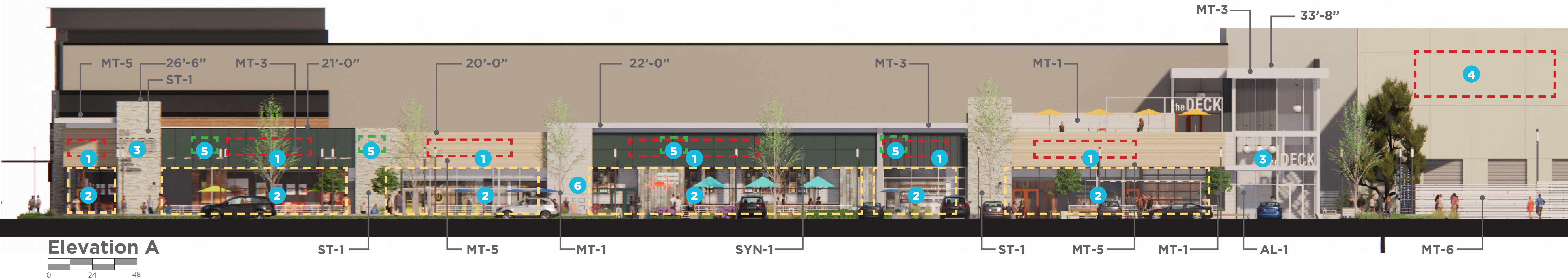
Perspective Tenant 2 and 3





Perspective Tenant 1



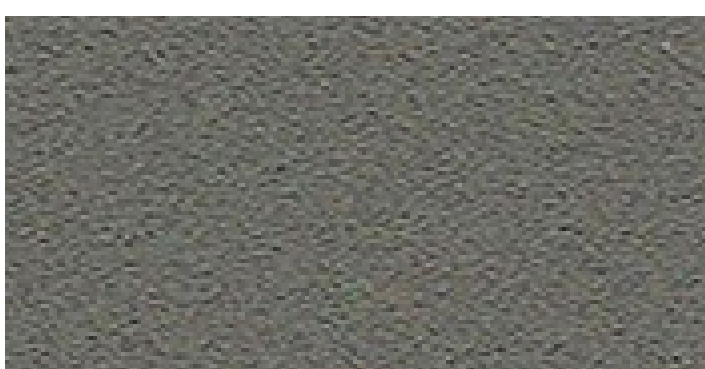


# Materials

MT-3 Metal Ceiling/Fascia



MT-2 Metal Siding 2



SYN-2 EIFS 2



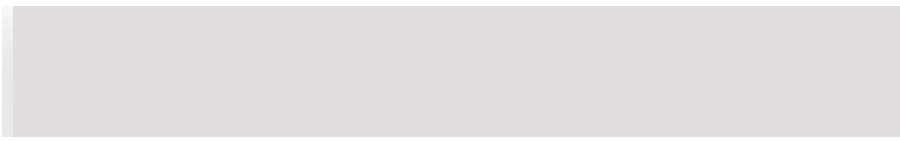
SYN-1 EIFS 1

MT-5 Linear metal siding

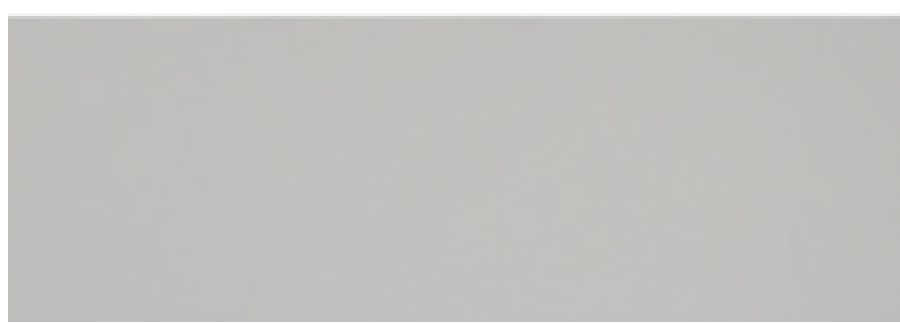


ST-1 Stone

MT-4 Alum. Storefront



MT-1 Linear metal siding  
MT-6 Linear metal fence



## NOTES

- 1 Tenant Sign by future tenant
- 2 Tenant Storefront by future tenant per local code.
- 3 Property sign
- 4 Mall tenant sign by future tenant
- 5 Roof top unit
- 6 Knock Box and FDC with signage

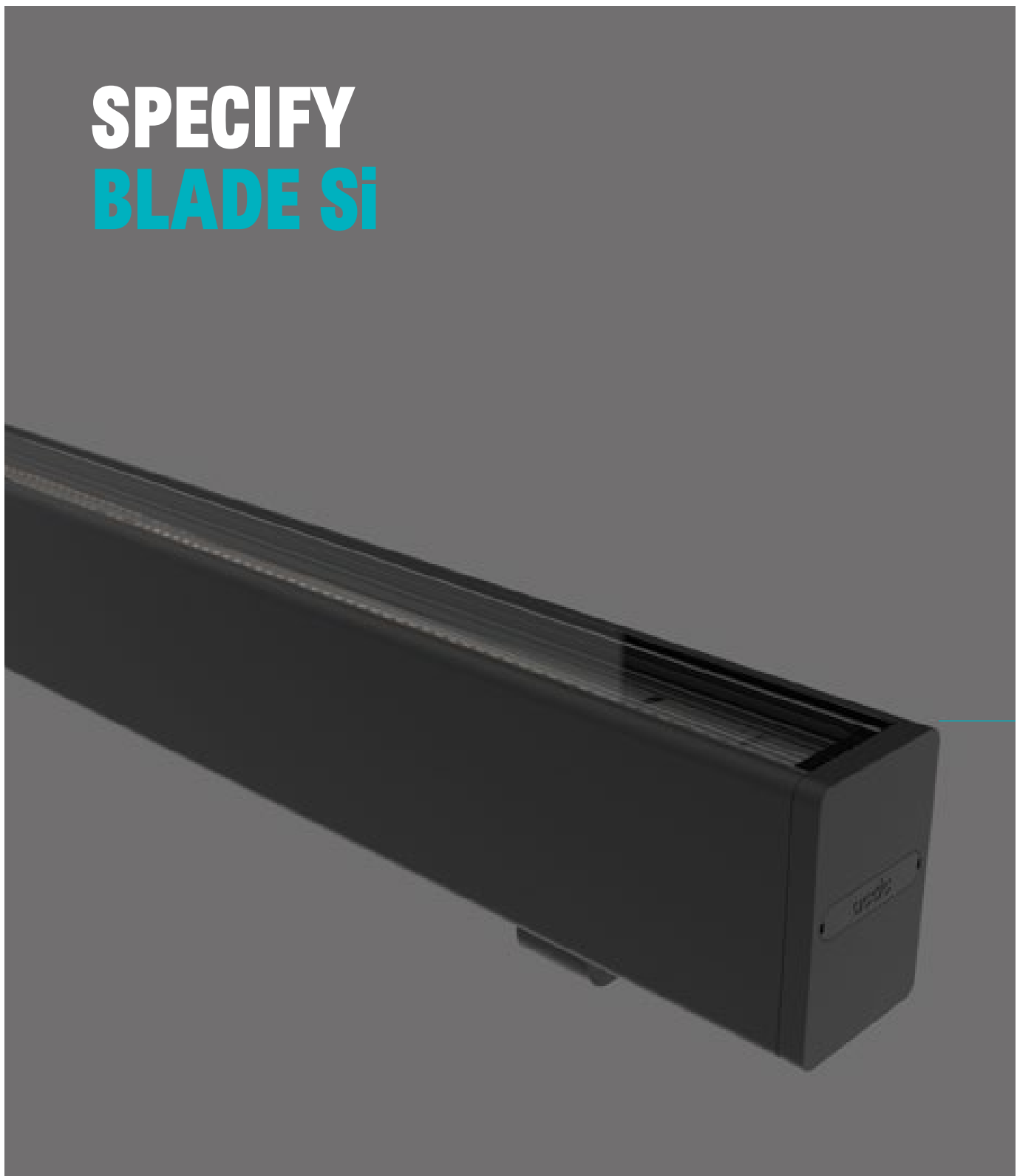




F-1 Pole Light



F-3 Indirect canopy/cornice  
light



F-4 Wall sconce



F-6 Festoon lights



# Light Fixtures



**NELSON**