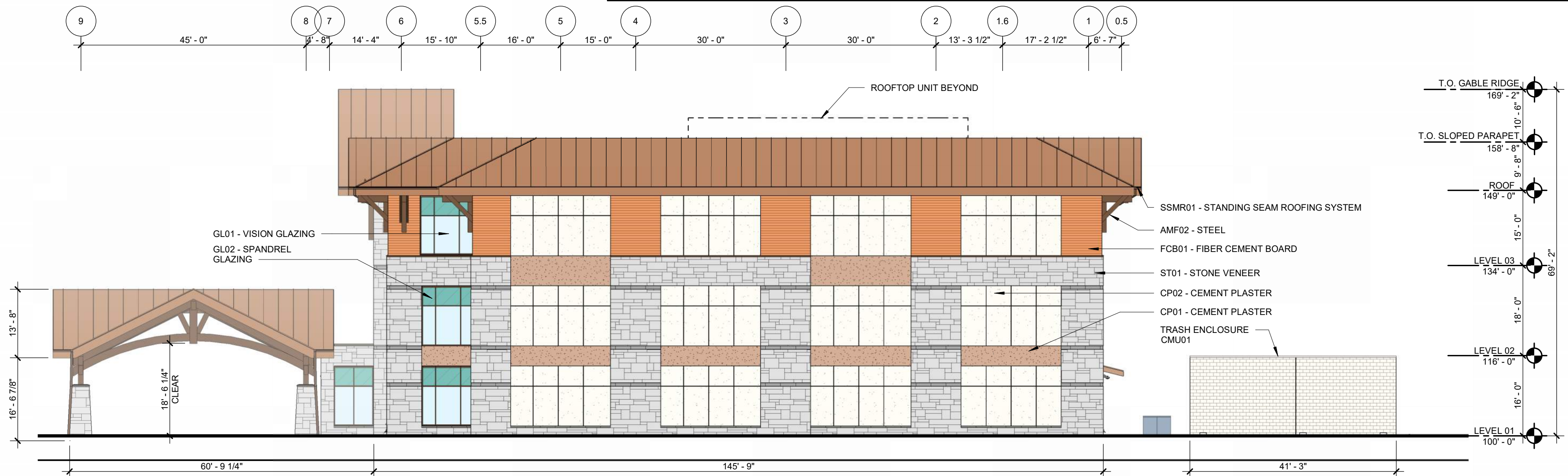
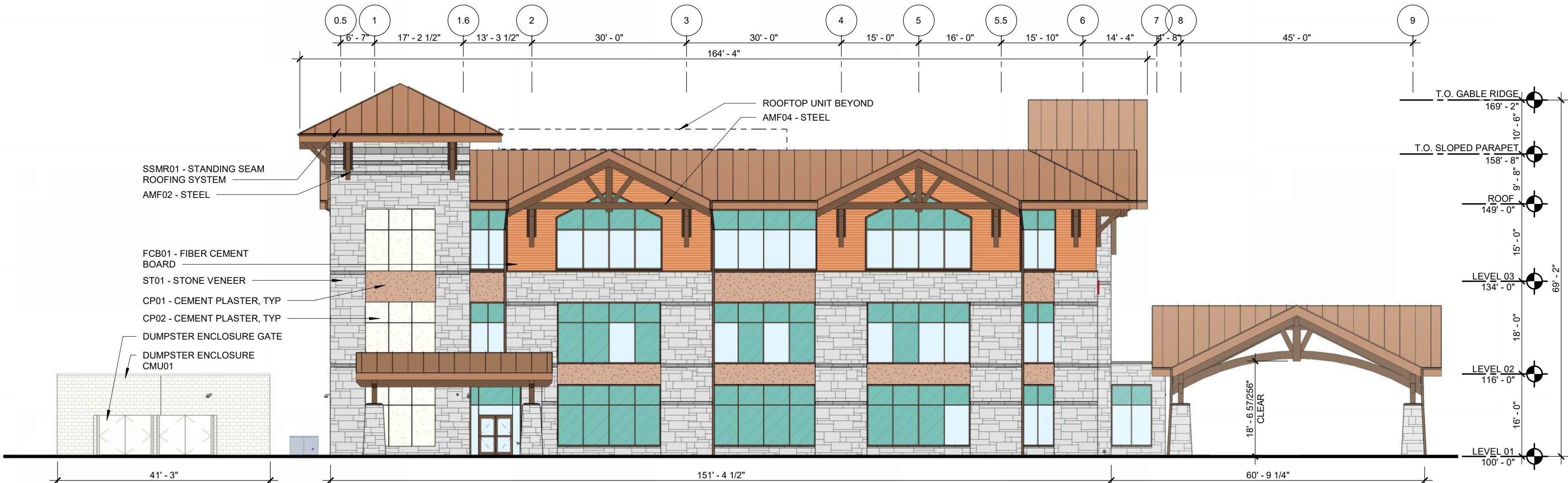


EXTERIOR MATERIAL LEGEND					REFER TO SECTION 010510				
	ST01 - STONE VENEER RANDOM ASHLAR PATTERN PRINCETON GRANITE NEWPORT GREY		GL01 - VISION GLAZING VIRACON VE1-2M CLEAR LITE		GAFS01 - STOREFRONT, BOD: JRB 6" J650X, AMF01		AMF01 (ALUMINUM) PPG DURANAR UC105735 COCOA BEAN		XPT01 MATCH ST01
	FCB01 - WOOD GRAIN FIBER CEMENT BOARD NICHHA VINTAGEWOOD CEDAR		GL02 - SPANDREL GLAZING VIRACON VE1-2M CLEAR LITE		GAFS02 - CURTAIN WALL, BOD: JRB 8 1/2" J3015T WITH 1 1/4" CAP, AMF01		AMF02 (STEEL) PPG DURANAR UC105735 COCOA BEAN		XPT02 MATCH CP01
	CP01 - CEMENT PLASTER FINISH STOSIGNATURE WOOD-10 16066 (WARM BROWN)		SSMR01 - STANDING SEAM ROOFING SYSTEM BERRIDGE CEE-LOCK MEDIUM BRONZE				AMF03 (STEEL) PPG DURANAR UC105747 NATURAL WICKER		XPT03 MATCH CP02
	CP02 - CEMENT PLASTER FINISH STOLIT X - MEDIUM 16040 (CREAM)		CMU01 - CONCRETE MASONRY UNIT XPT03				AMF04 (STEEL) PPG DURANAR UC105735 COCOA BEAN		XPT04 MATCH FCB01





EXTERIOR MATERIAL LEGEND				REFER TO SECTION 010510			
	ST01 - STONE VENEER RANDOM ASHLAR PATTERN PRINCETON GRANITE NEWPORT GREY		GL01 - VISION GLAZING VIRACON VE1-2M CLEAR LITE	GAFS01 - STOREFRONT, BOD: JRB 6" J650X, AMF01			AMF01 (ALUMINUM) PPG DURANAR UC105735 COCOA BEAN
	FCB01 - WOOD GRAIN FIBER CEMENT BOARD NICHHA VINTAGEWOOD CEDAR		GL02 - SPANDREL GLAZING VIRACON VE1-2M CLEAR LITE	GAFS02 - CURTAIN WALL, BOD: JRB 8 1/2" J3015T WITH 1 1/4" CAP, AMF01			AMF02 (STEEL) PPG DURANAR UC105735 COCOA BEAN
	CP01 - CEMENT PLASTER FINISH STOSIGNATURE WOOD-10 16066 (WARM BROWN)		SSMR01 - STANDING SEAM ROOFING SYSTEM BERRIDGE CEE-LOCK MEDIUM BRONZE				AMF03 (STEEL) PPG DURANAR UC105747 NATURAL WICKER
	CP02 - CEMENT PLASTER FINISH STOLIT X - MEDIUM 16040 (CREAM)		CMU01 - CONCRETE MASONRY UNIT XPT03				AMF04 (STEEL) PPG DURANAR UC105735 COCOA BEAN
							XPT01 MATCH ST01
							XPT02 MATCH CP01
							XPT03 MATCH CP02
							XPT04 MATCH FCB01



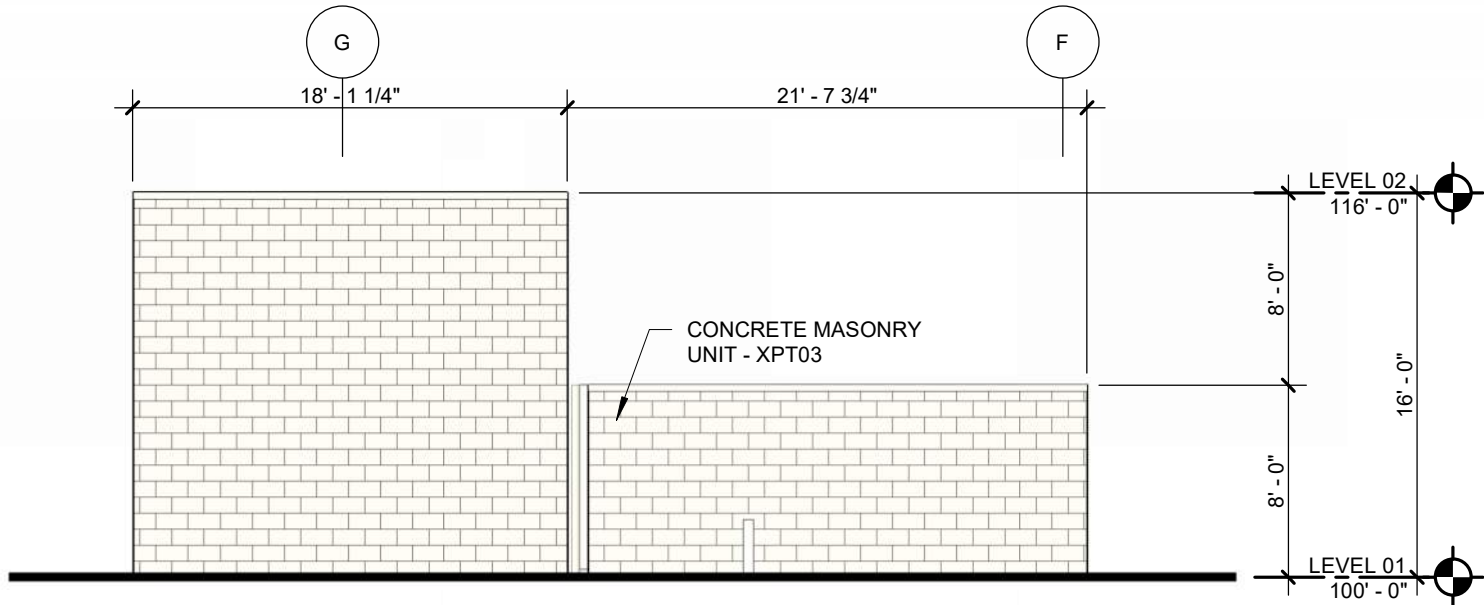
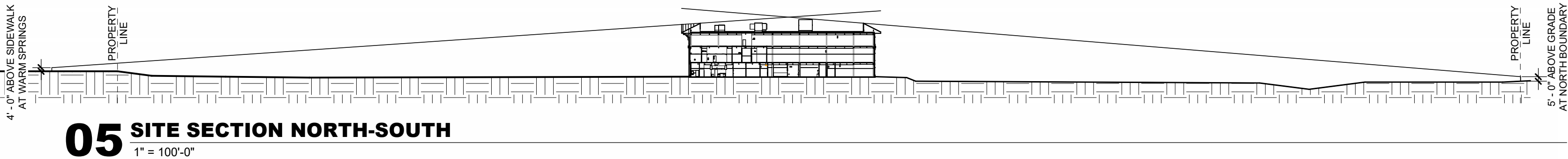
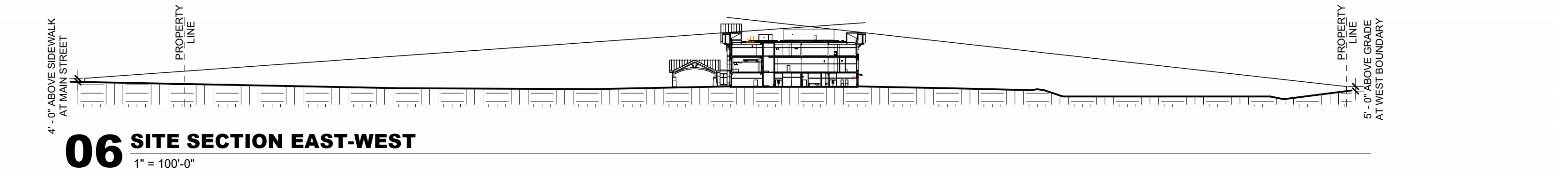
02 SOUTH OVERALL BUILDING ELEVATION - SDP  
1/16" = 1'-0"



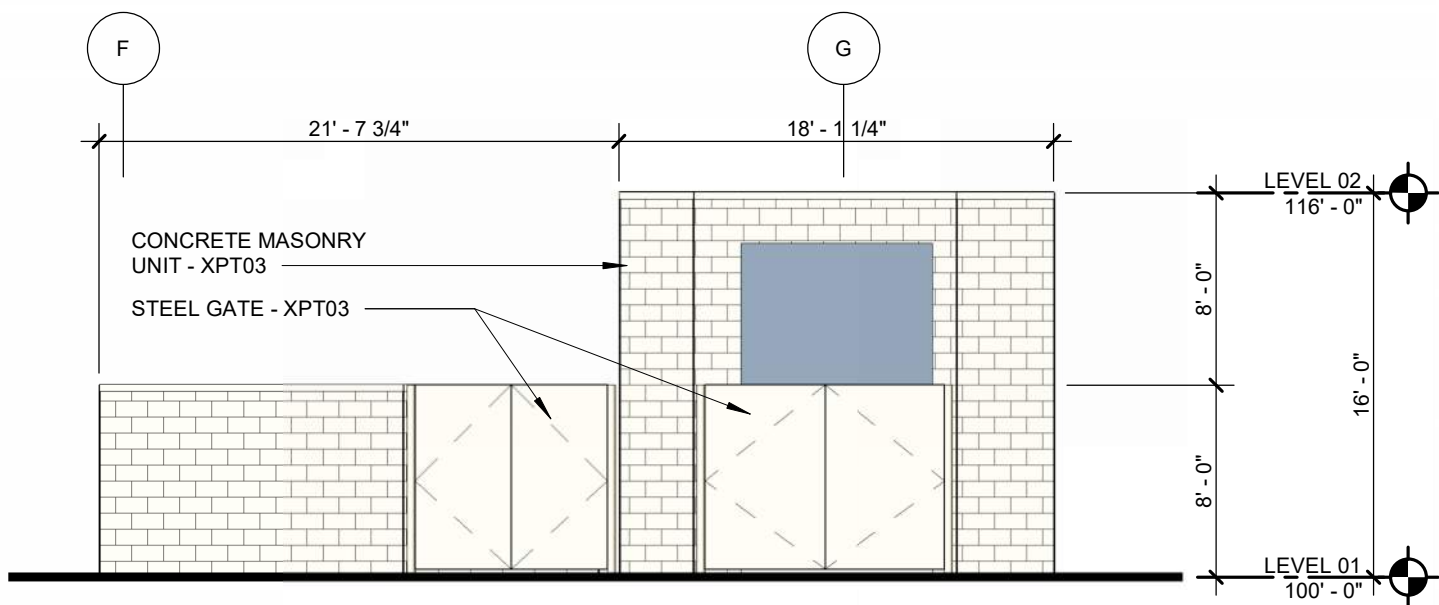
01 WEST OVERALL BUILDING ELEVATION - SDP  
1/16" = 1'-0"



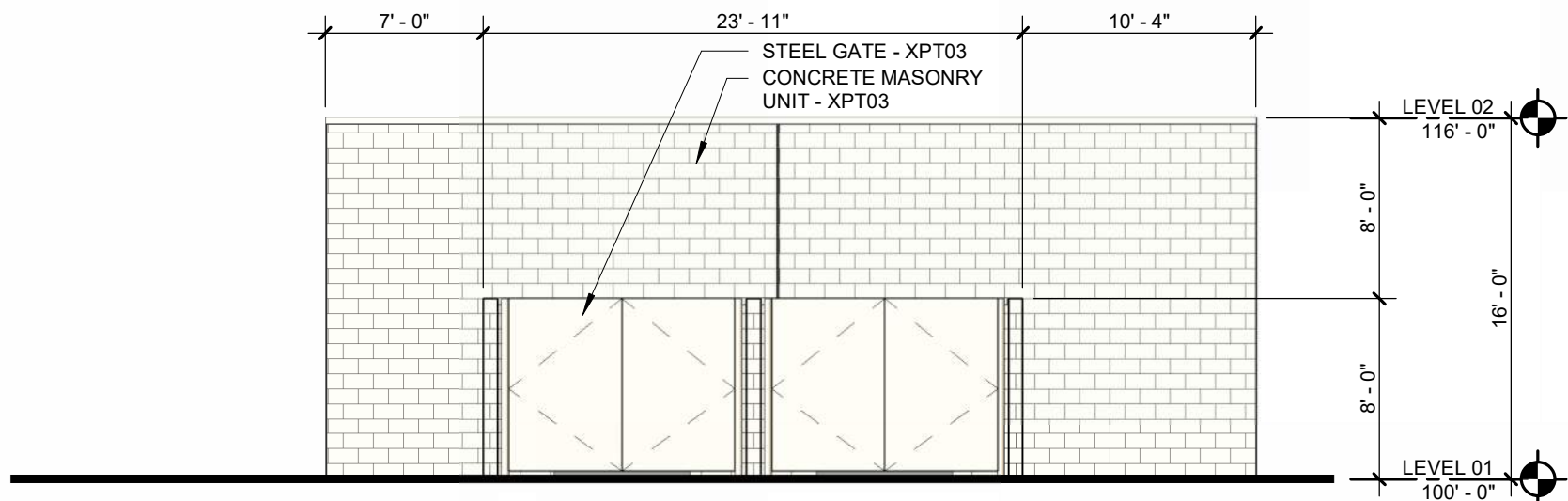
EXTERIOR MATERIAL LEGEND					REFER TO SECTION 010510				
	ST01 - STONE VENEER RANDOM ASHLAR PATTERN PRINCETON GRANITE NEWPORT GREY		GL01 - VISION GLAZING VIRACON VE1-2M CLEAR LITE		GAFS01 - STOREFRONT, BOD: JRB 6" J650X, AMF01		AMF01 (ALUMINUM) PPG DURANAR UC105735 COCOA BEAN		XPT01 MATCH ST01
	FCB01 - WOOD GRAIN FIBER CEMENT BOARD NICHIIA VINTAGEWOOD CEDAR		GL02 - SPANDREL GLAZING VIRACON VE1-2M CLEAR LITE		GAFS02 - CURTAIN WALL, BOD: JRB 8 1/2" J3015T WITH 1 1/4" CAP, AMF01		AMF02 (STEEL) PPG DURANAR UC105735 COCOA BEAN		XPT02 MATCH CP01
	CP01 - CEMENT PLASTER FINISH STOSIGNATURE WOOD-10 16066 (WARM BROWN)		SSMR01 - STANDING SEAM ROOFING SYSTEM BERRIDGE CEE-LOCK MEDIUM BRONZE		AMF03 (STEEL) PPG DURANAR UC105747 NATURAL WICKER		XPT03 MATCH CP02		XPT04 MATCH FCB01
	CP02 - CEMENT PLASTER FINISH STOLIT X - MEDIUM 16040 (CREAM)		CMU01 - CONCRETE MASONRY UNIT XPT03		AMF04 (STEEL) PPG DURANAR UC105735 COCOA BEAN				



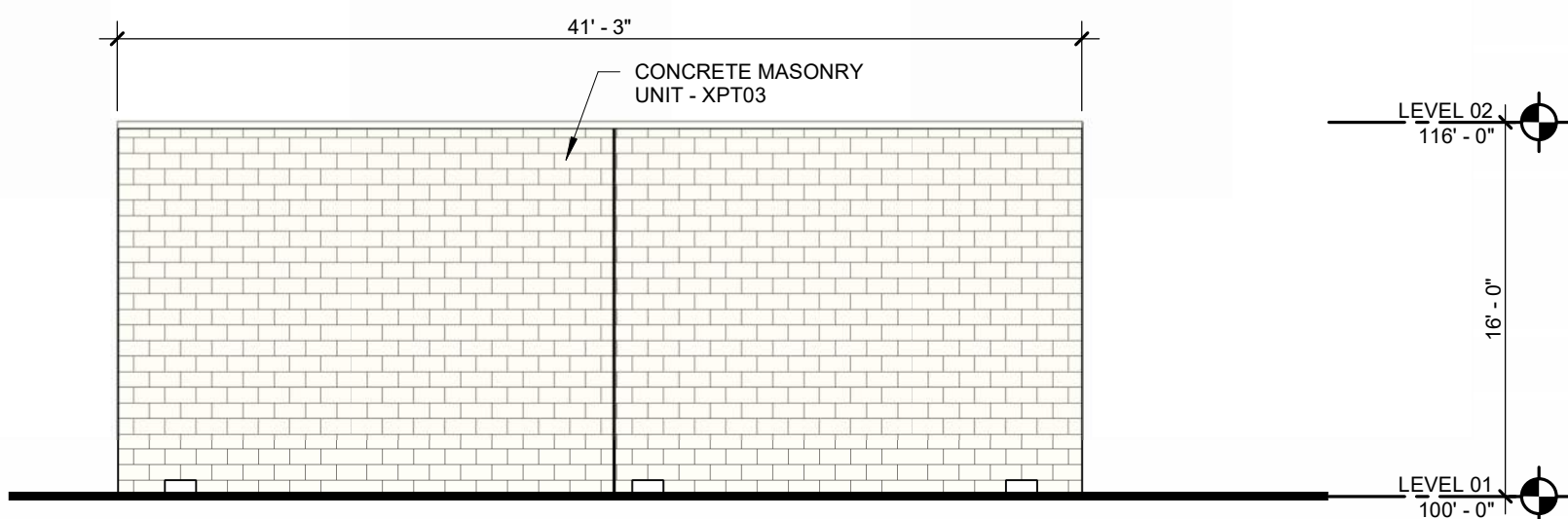
**04 WEST TRASH/GENERATOR ENCLOSURE ELEVATION SDP**  
1/8" = 1'-0"



**02 EAST TRASH/GENERATOR ENCLOSURE ELEVATION SDP**  
1/8" = 1'-0"



**03 SOUTH TRASH/GENERATOR ENCLOSURE ELEVATION SDP**  
1/8" = 1'-0"



**01 NORTH TRASH/GENERATOR ENCLOSURE ELEVATION SDP**  
1/8" = 1'-0"