

7/11/2024

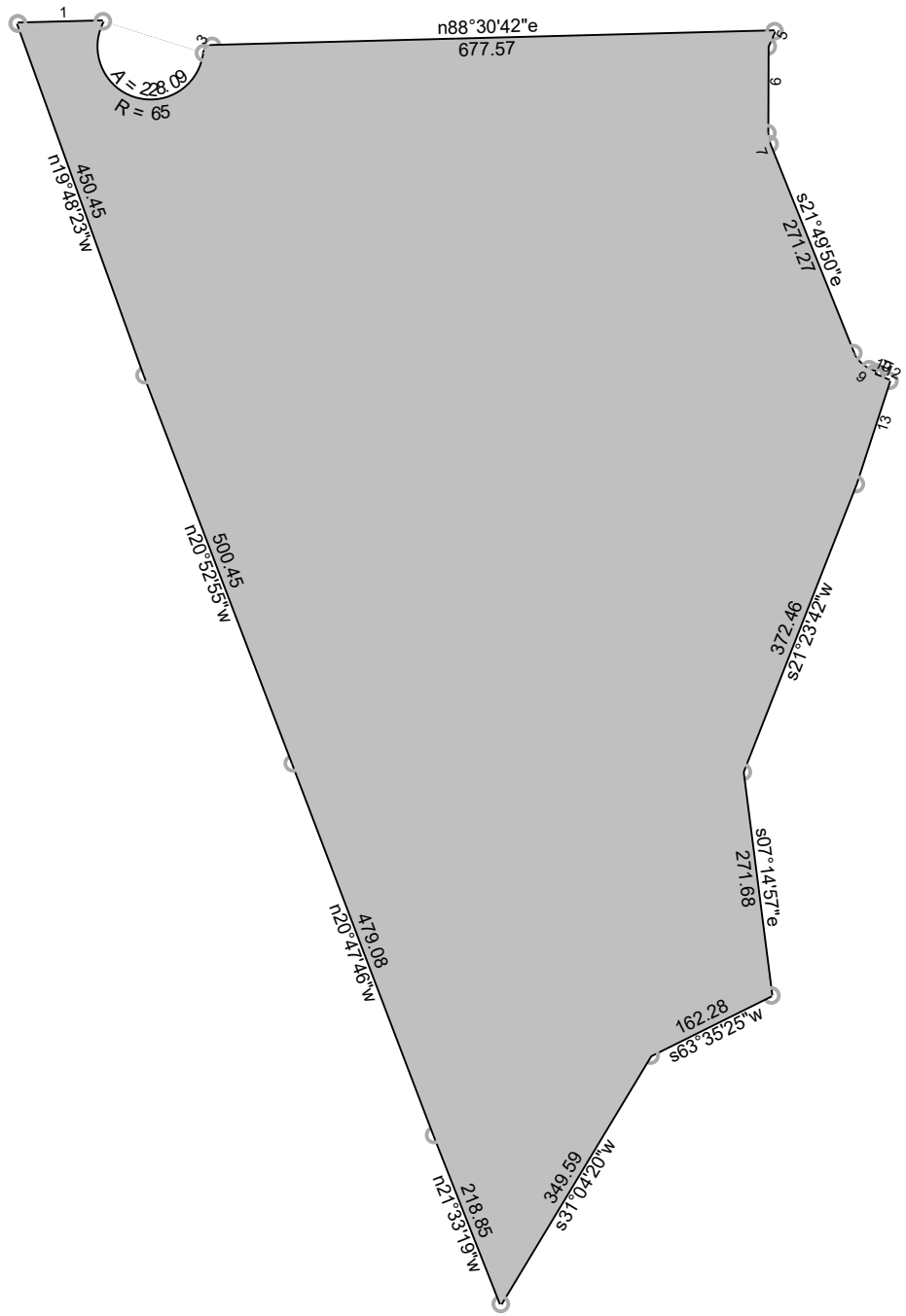
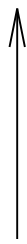
Scale: 1 inch= 225 feet

File: Overall.ndp

Tract 1: 23.4083 Acres, Closure: n32.4951e 0.01 ft. (1/462006), Perimeter=4662 ft.

01 s22.0514w 400.76  
 02 s18.0238w 226.64  
 03 s21.2342w 372.46  
 04 s07.1457e 271.68  
 05 s63.3525w 162.28  
 06 s31.0420w 349.59  
 07 n21.3319w 218.85  
 08 n20.4746w 479.08  
 09 n20.5255w 500.45

10 n19.4823w 450.45  
 11 n88.3042e 1230.18

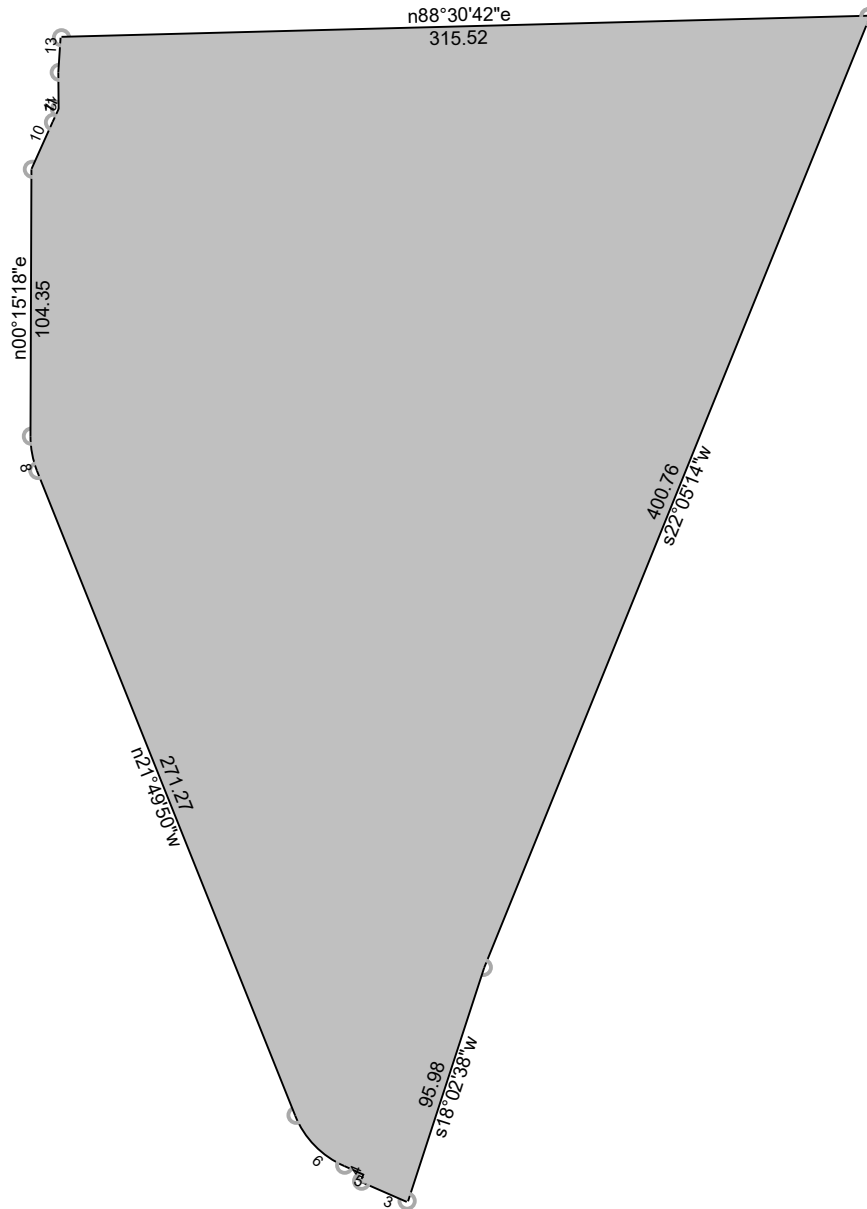


7/11/2024

Scale: 1 inch= 225 feet | File: Lot 1, Block 1.ndp

Tract 1: 20.5959 Acres, Closure: n00.0000e 0.00 ft. (1/999999), Perimeter=4426 ft.

- |  |                     |
|--|---------------------|
| 01 n88.3042e 102.41  | 14 s21.2342w 372.46 |
| 02 Lt, r=65.00, delta=201.0331, arc=228.09, chord=s72.3131e 127.81 | 15 s07.1457e 271.68 |
| 03 Rt, r=10.00, delta=081.3358, arc=14.24, chord=n47.4343e 13.06   | 16 s63.3525w 162.28 |
| 04 n88.3042e 677.57  | 17 s31.0420w 349.59 |
| 05 s24.1832w 20.07   | 18 n21.3319w 218.85 |
| 06 s00.1518w 104.35  | 19 n20.4746w 479.08 |
| 07 Lt, r=36.00, delta=021.4435, arc=13.66, chord=s10.5733e 13.58   | 20 n20.5255w 500.45 |
| 08 s21.4950e 271.27  | 21 n19.4823w 450.45 |
| 09 Lt, r=36.00, delta=044.3102, arc=27.97, chord=s44.0521e 27.27   |                     |
| 10 s66.2052e 8.50  |                     |
| 11 s23.3908w 3.00  |                     |
| 12 s66.2052e 19.39   |                     |
| 13 s18.0238w 130.66  |                     |



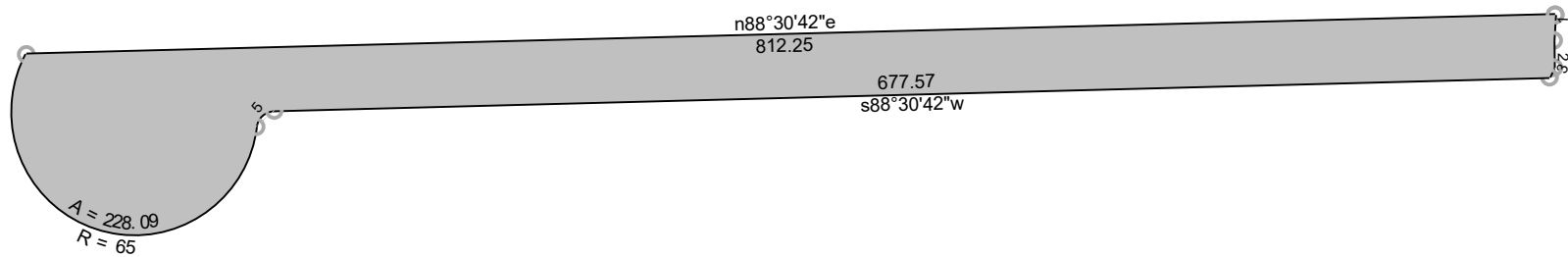
7/11/2024

Scale: 1 inch= 75 feet

File: Tract A.ndp

Tract 1: 2.0438 Acres (89028 Sq. Feet), Closure: n37.4125e 0.01 ft. (1/91373), Perimeter=1314 ft.

01 s22.0514w 400.76	11 n24.1832e 5.59
02 s18.0238w 95.98	12 n00.2057w 14.45
03 n66.2052w 19.39	13 n03.3205e 13.57
04 n23.3908e 3.00	14 n88.3042e 315.52
05 n66.2052w 8.50	
06 Rt, r=36.00, delta=044.3102, arc=27.97, chord=n44.0521w 27.27	
07 n21.4950w 271.27	
08 Rt, r=36.00, delta=021.4435, arc=13.66, chord=n10.5733w 13.58	
09 n00.1518e 104.35	
10 n24.1832e 20.07	



7/11/2024

Scale: 1 inch= 100 feet

File: E 63rd Ave.ndp

Tract 1: 0.7685 Acres (33476 Sq. Feet), Closure: s68.3154w 0.01 ft. (1/299592), Perimeter=1766 ft.

01 s03.3205w 13.57

07 n88.3042e 812.25

02 s00.2057e 14.45

03 s24.1832w 5.59

04 s88.3042w 677.57

05 Lt, r=10.00, delta=081.3358, arc=14.24, chord=s47.4343w 13.06

06 Rt, r=65.00, delta=201.0331, arc=228.09, chord=n72.3131w 127.81