



UNIT A
LEFT ELEVATION
ELEVATION A 1/8" = 1'-0"



UNIT B UNIT A
REAR ELEVATION
ELEVATION A 1/8" = 1'-0"



UNIT B
RIGHT ELEVATION
ELEVATION A 1/8" = 1'-0"



UNIT A UNIT B
FRONT ELEVATION

- COMPOSITE ROOF SHINGLES
- 4" LAP SIDING
- 8" LAP SIDING
- MASONRY VENEER

BLVDWAY
COMMUNITIES
600 Grant Street, Suite 404
Denver, CO 80203

FELTENGROUP
ARCHITECTURE | ENGINEERING | FORENSICS
PHONE: 602.887.2500 WWW.FELTENGROUP.COM
www.feltengroup.com copyright 2020

Calibre
ENGINEERING
Calibre Engineering, Inc.
8000 South Lincoln Street, Unit 5
Littleton, CO 80122 (303) 720-0434
Municipal Engineering Development Master Planning
Prepared for: KINGSTON PLACE DEVCO, LLC

KINGSTON PLACE
ELEVATION A-B
SITE PLAN
11/23/2020

Sheet
E1
of
Design: JCSM Drafter: JCSM Checked: -
Drawing Name:
Path:



UNIT C
LEFT ELEVATION
ELEVATION A 1/8" = 1'-0"



UNIT D UNIT C
REAR ELEVATION
ELEVATION A 1/8" = 1'-0"



UNIT D
RIGHT ELEVATION
ELEVATION A 1/8" = 1'-0"



UNIT C UNIT D
FRONT ELEVATION

BLVDWAY
COMMUNITIES
600 Grant Street, Suite 404
Denver, CO 80203

FELTENGROUP
ARCHITECTURE | ENGINEERING | FORENSICS
PHONE: 802.867.2500 WWW.FELTENGROUP.COM
www.feltengroup.com copyright 2020

Calibre
ENGINEERING
Calibre Engineering, Inc.
8000 South Lincoln Street, Unit 5
Littleton, CO 80122 (303) 720-0434
Municipal Engineering Development Master Planning
Prepared for: KINGSTON PLACE DEVCO, LLC

KINGSTON PLACE
ELEVATION C-D
SITE PLAN
11/23/2020

Sheet
E1
of
Design: JCSM Drafter: JCSM Checked: -
Drawing Name:
Path:

KINGSTON PLACE

A Development of Kingston Place Devco, LLC

10164/Junco Run, Littleton, Colorado 80125

Voice: 303-948-7450 Fax: 303-948-7451

DATE:
DRAWN:
REV: 10/10/07

PROJECT

DRAWING
AR-1

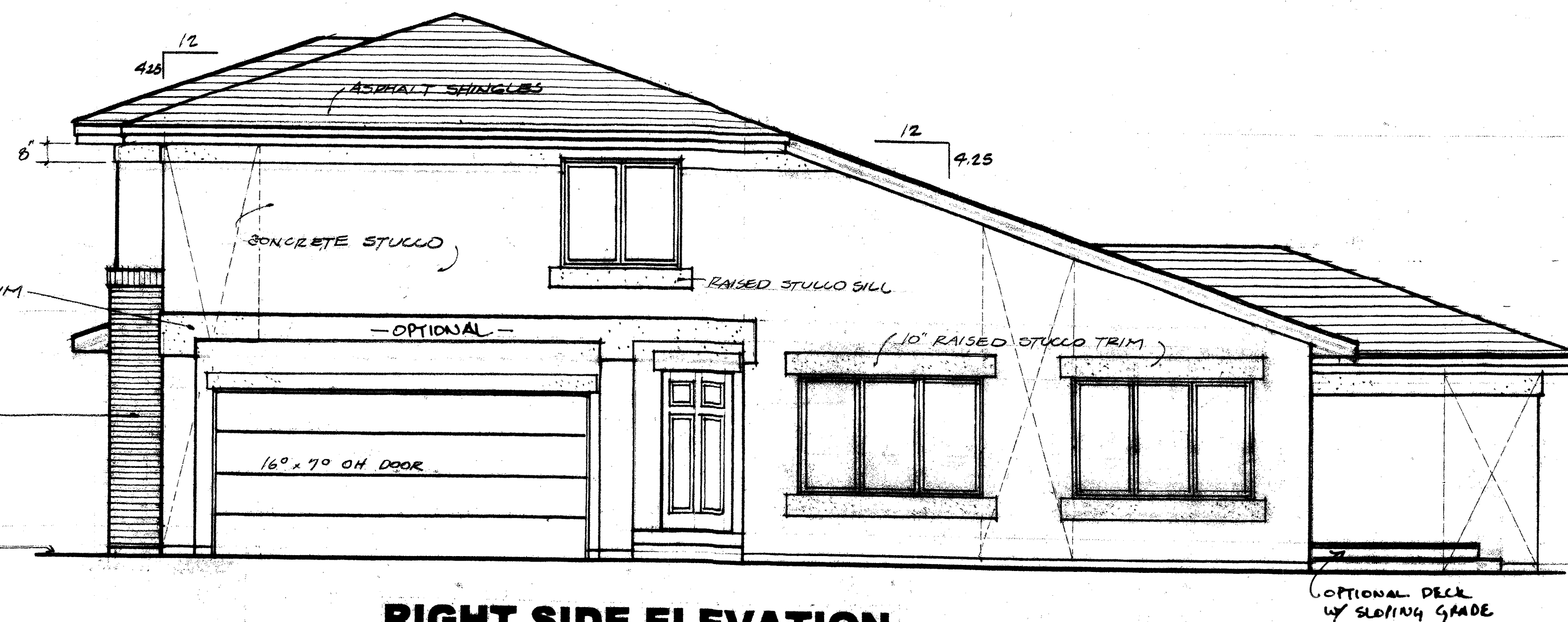
SHEET 9 OF 12

KINGSTON PLACE 2004-4008-00



FRONT ELEVATION

1/4" = 1'-0"

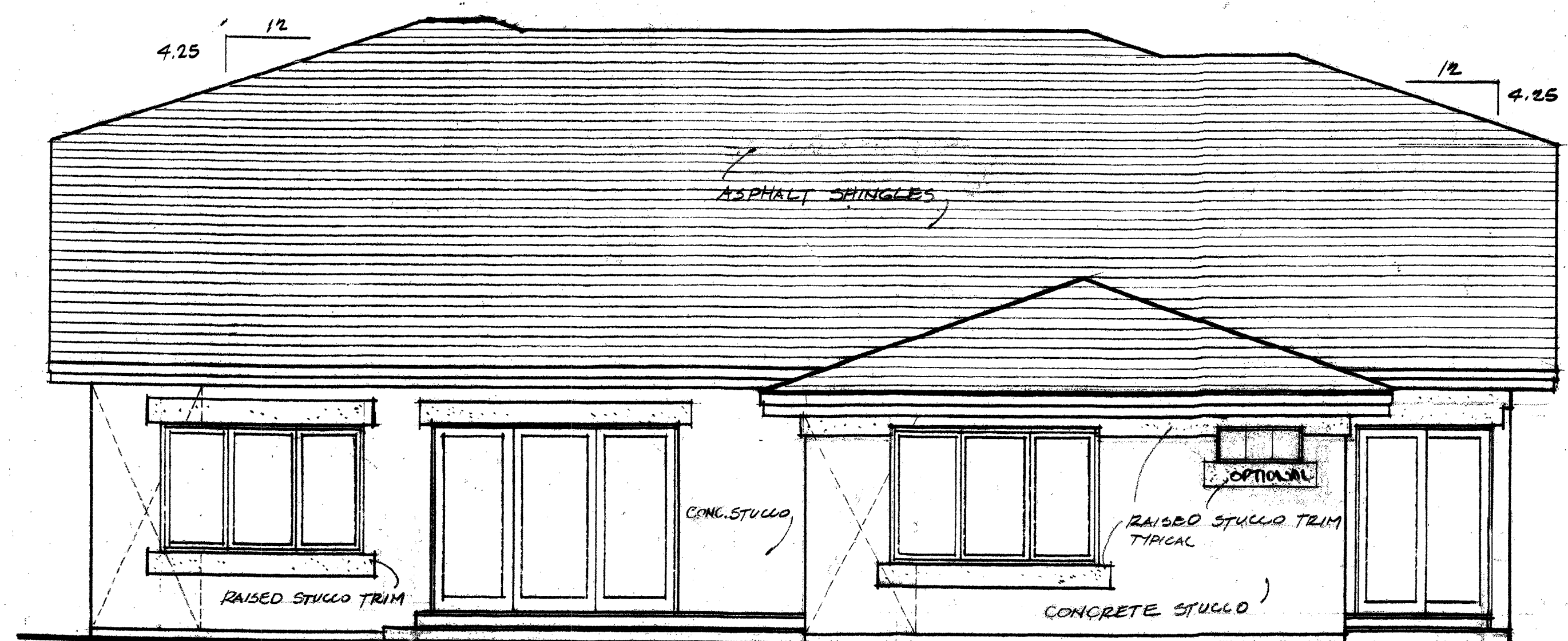


RIGHT SIDE ELEVATION

1/4" = 1'-0"

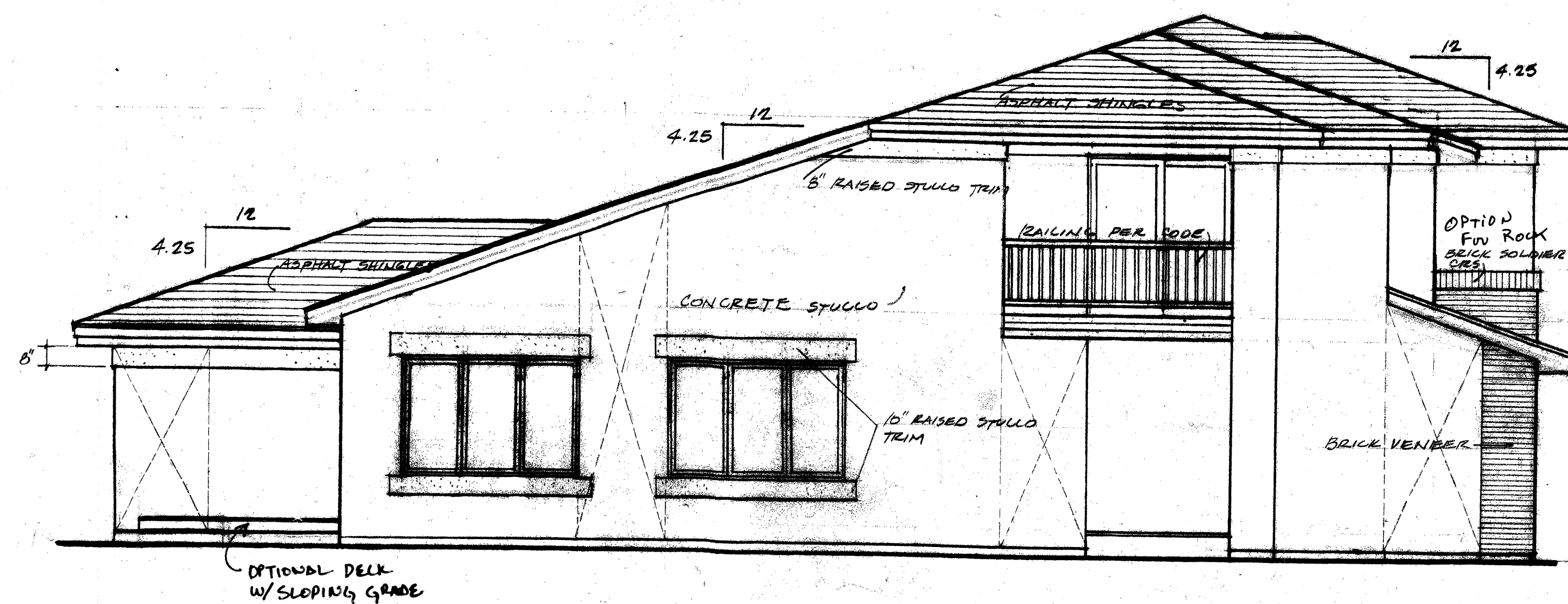
ELEVATION NOTES:

1. DASHED LINES INDICATE WIND SHEAR PANEL AREA. NAIL 1/6" O.S.D. W/ Bd NAILS @ 12" O.C. TOP, BOTTOM & STUDDING
2. PROVIDE 1 S.F. OF ROOF VENTILATION PER 100 S.F. ROOF AREA PER CODE
3. PROVIDE ADDRESS SIGN PER CODE
4. PROVIDE GUTTERS AND DOWNSPOUTS PER CODE. DO NOT ALLOW DOWNSPOUTS TO DISCHARGE ON SIDEWALKS



REAR ELEVATION

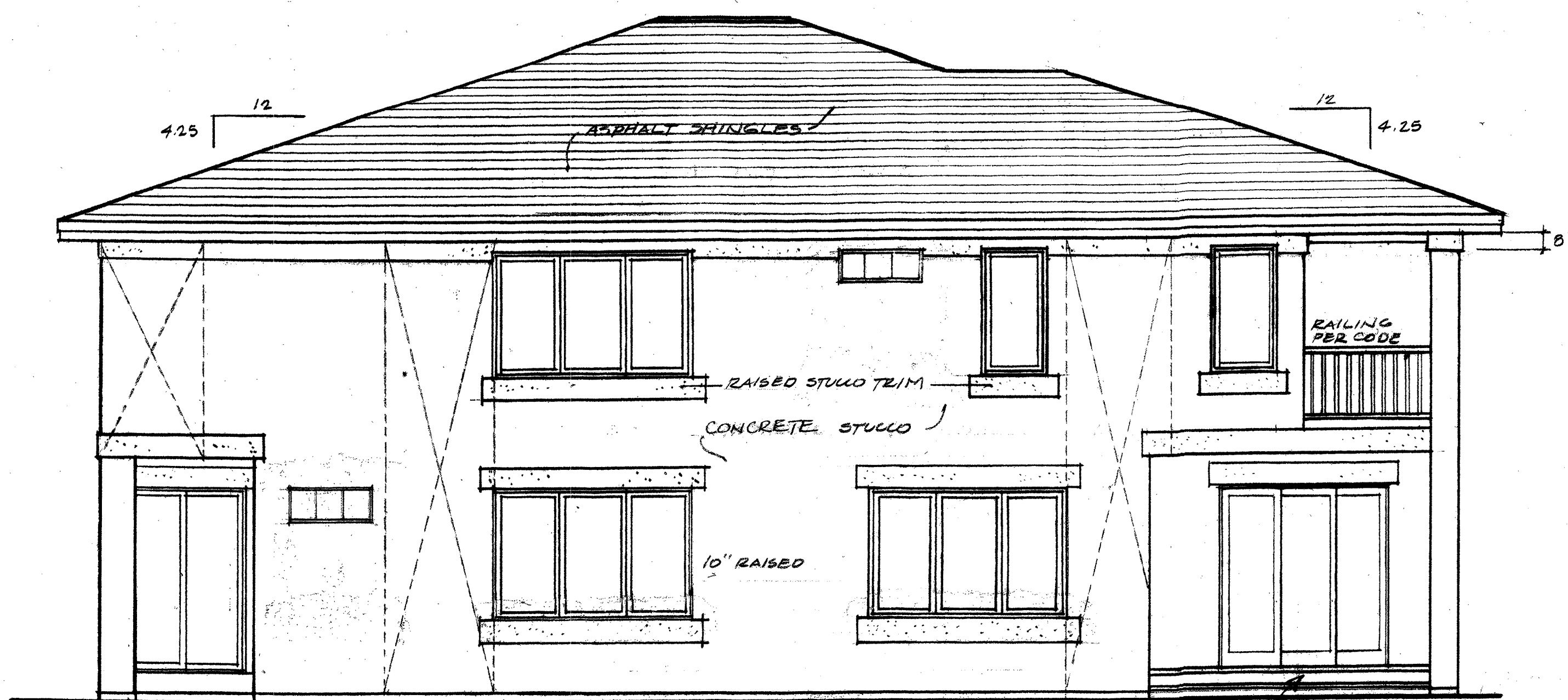
1/4" = 1'-0"



LEFT SIDE ELEVATION

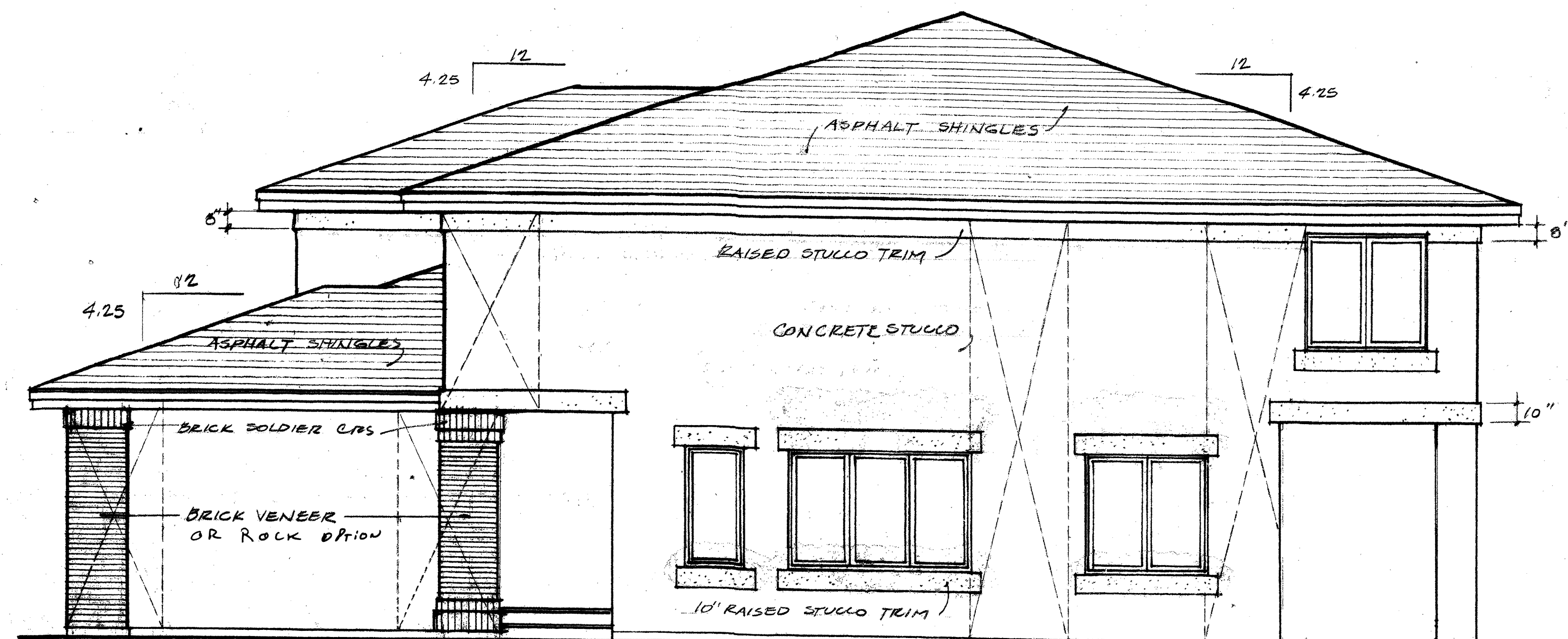
1/4" = 1'-0"

UNIT "A" UNIT "B"
UNIT E UNIT F



REAR ELEVATION

1/4" = 1'-0"

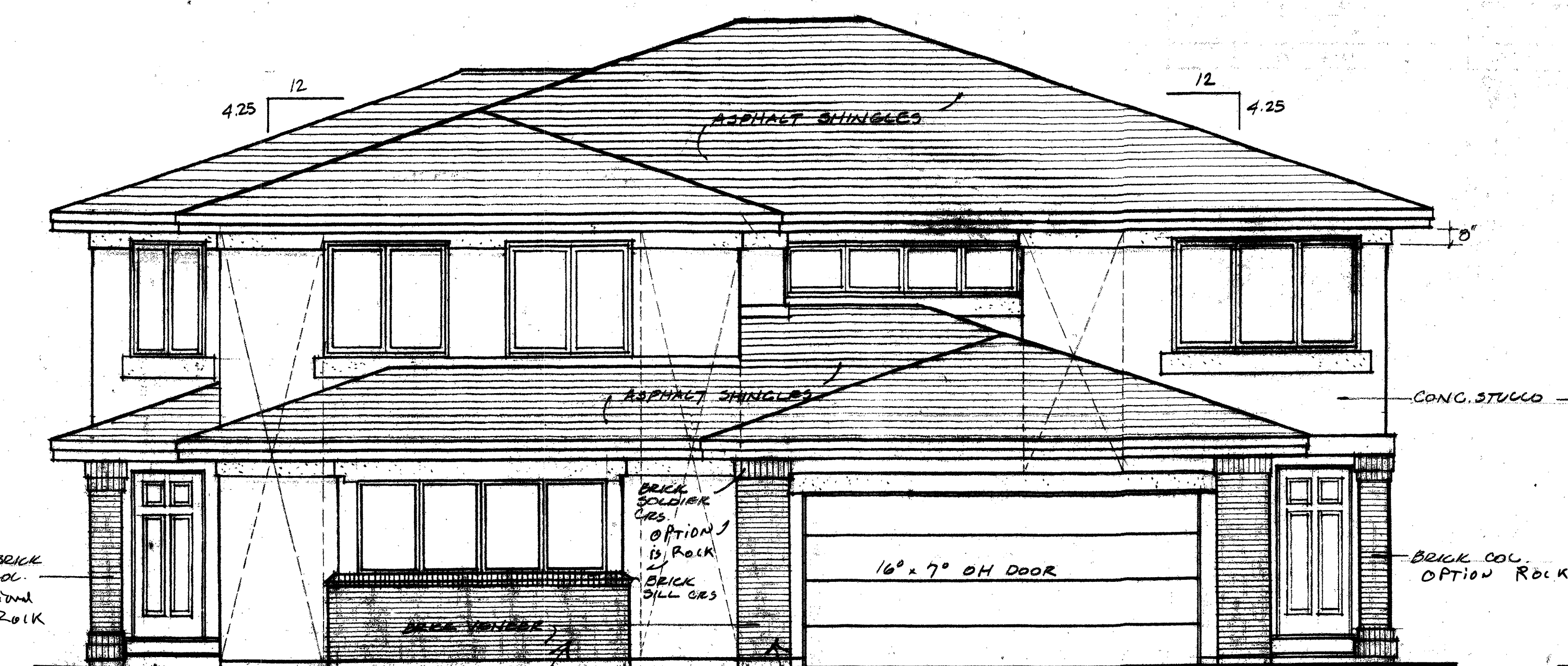


RIGHT SIDE ELEVATION

1/4" = 1'-0"

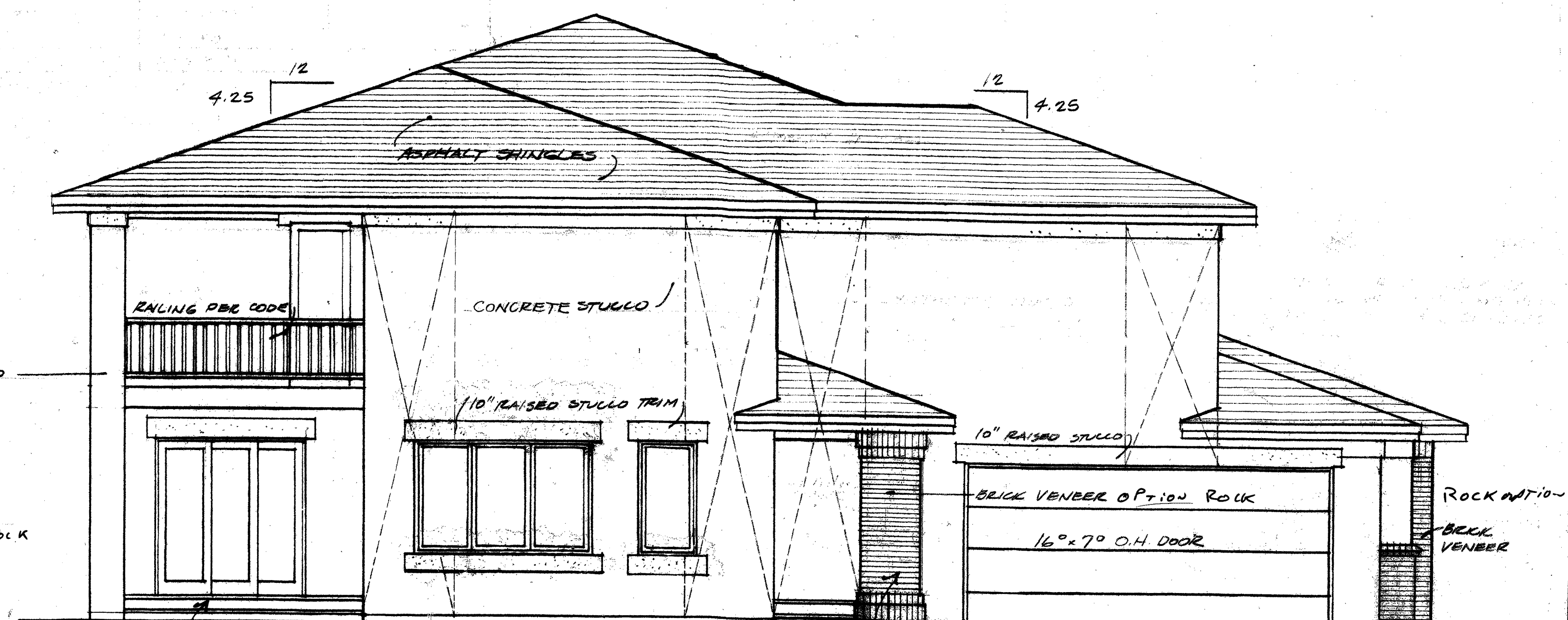
ELEVATION NOTES:

1. DASHED LINES INDICATE WIND SHEAR PANEL AREA. NAIL 7/16" D.S.B. w/ 8d NAILS @ 12" O.C. TOP, BOTTOM, & STUDDING.
2. PROVIDE 1 S.F. OF ROOF VENTILATION PER 150 S.F. ROOF AREA PER CODE.
3. PROVIDE ADDRESS SIGN PER CODE.
4. PROVIDE GUTTERS AND DOWNSPOUTS PER CODE. DO NOT ALLOW DOWNSPOUTS TO DISCHARGE ON SIDEWALKS.



FRONT ELEVATION

1/4" = 1'-0"



LEFT SIDE ELEVATION

1/4" = 1'-0"

UNIT "C" UNIT "D"
UNIT G UNIT H

William Hardison & Associates

6638 West Ottawa Avenue
Ste. 140-3
Littleton, CO. 80123

(303) 979-3034

KINGSTON PLACE

A Development of Kingston Place Devco, LLC

10104 Junco Run, Littleton, Colorado 80125

Voice: 303-948-7450 Fax: 303-948-7451

DATE:
DRAWN:
REV: 10/10/04

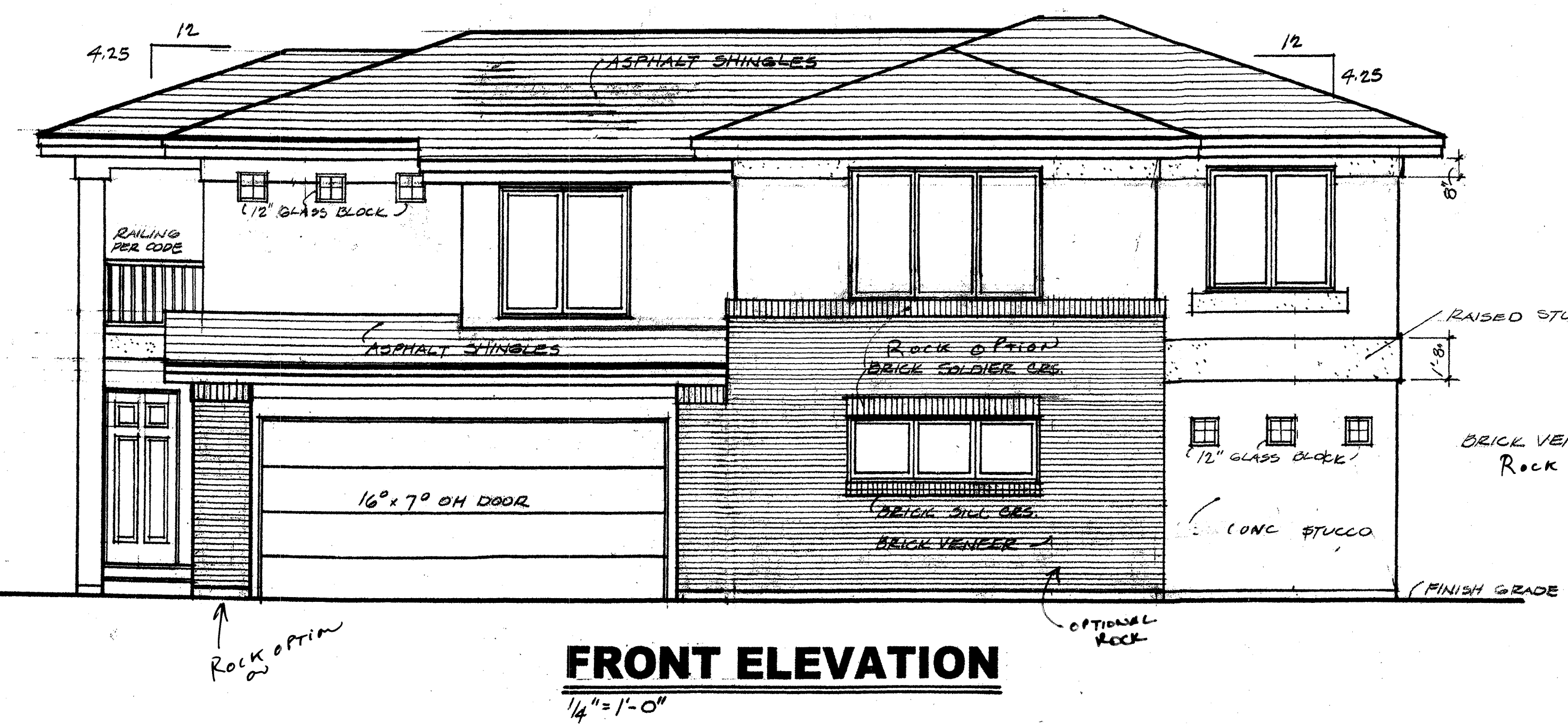
PROJECT

DRAWING
AR-2

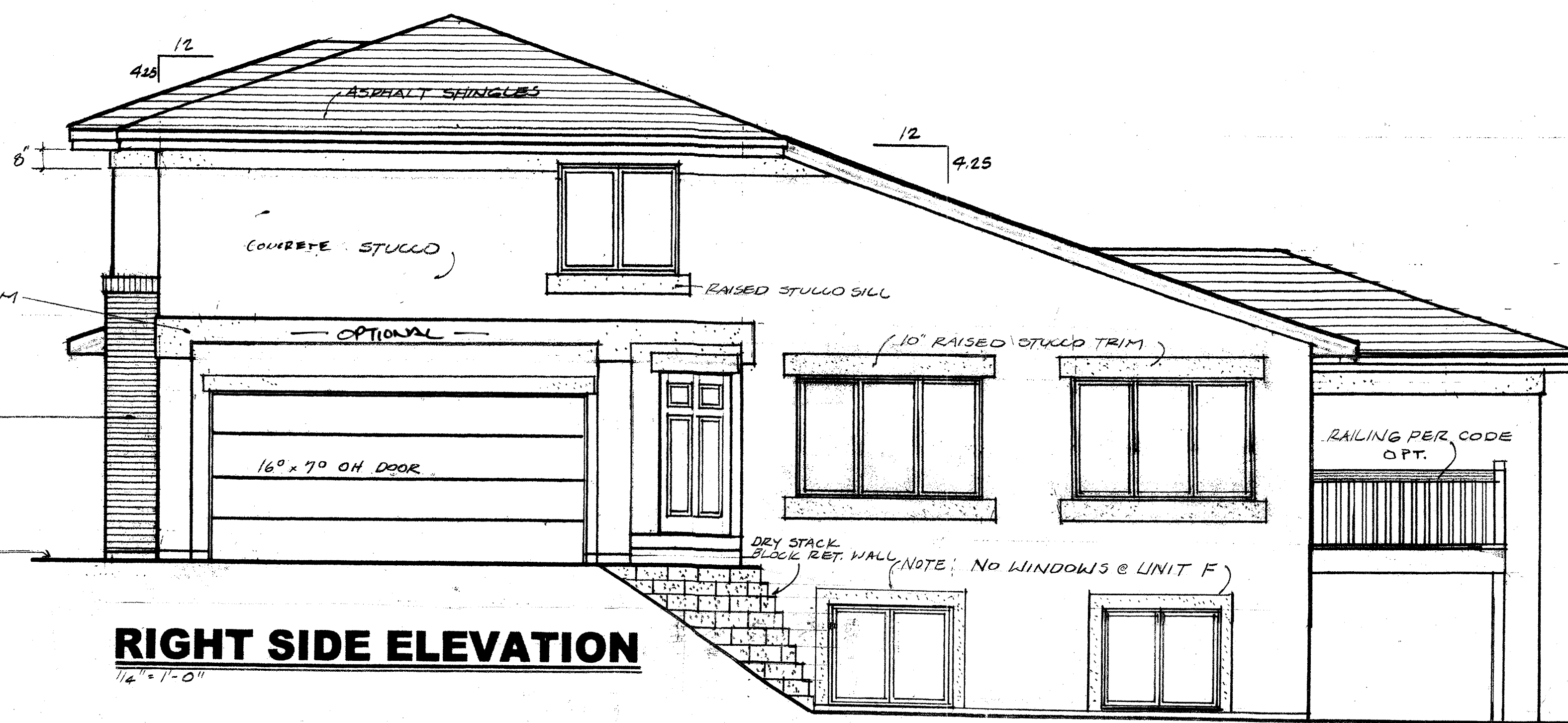
SHEET 10 OF 12

KINGSTON PLACE 2004-4008-00

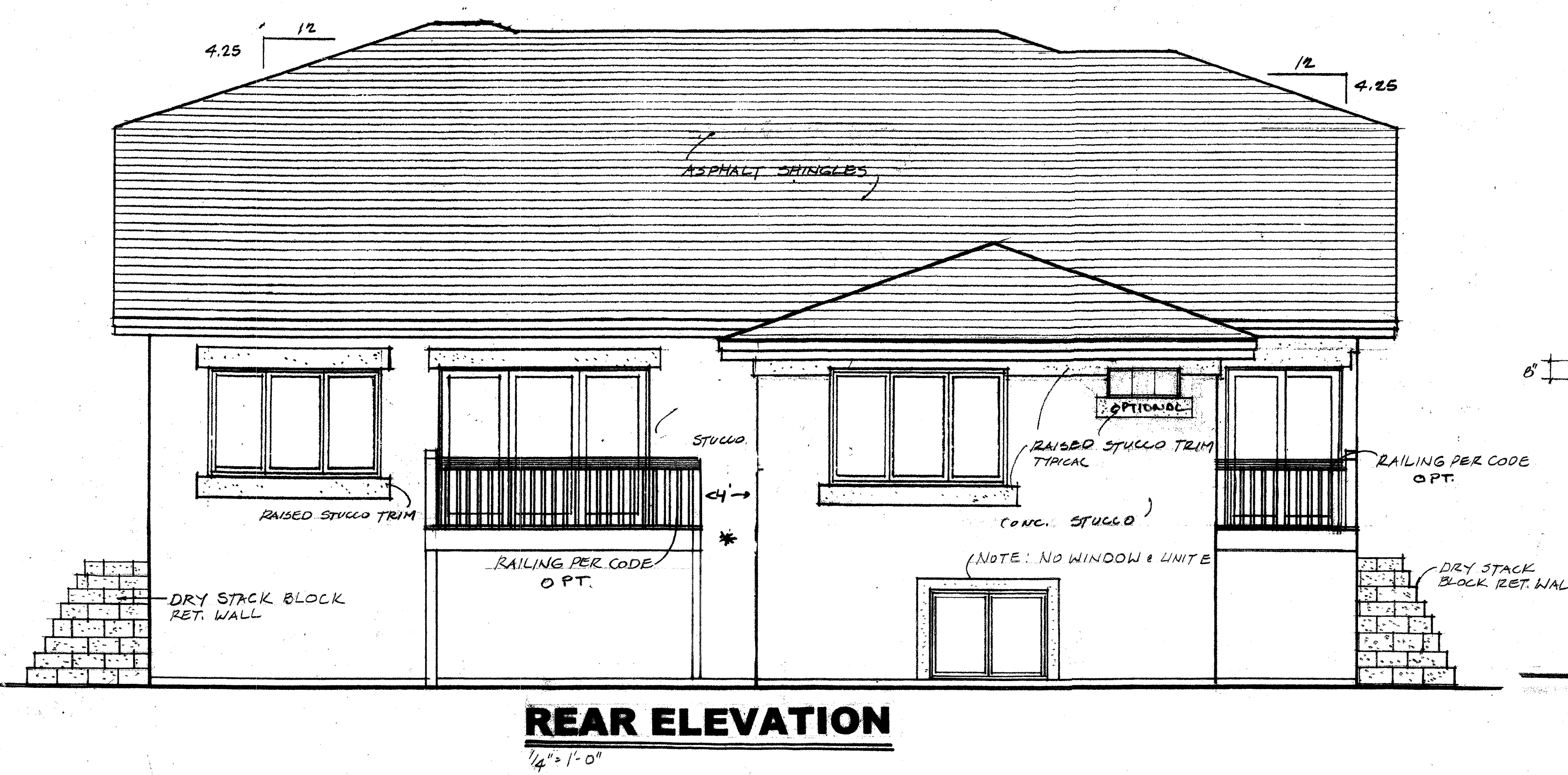
Typical For
UNIT "E" UNIT "F"
UNIT "A" UNIT "B"
GARDEN LEVEL OPTION



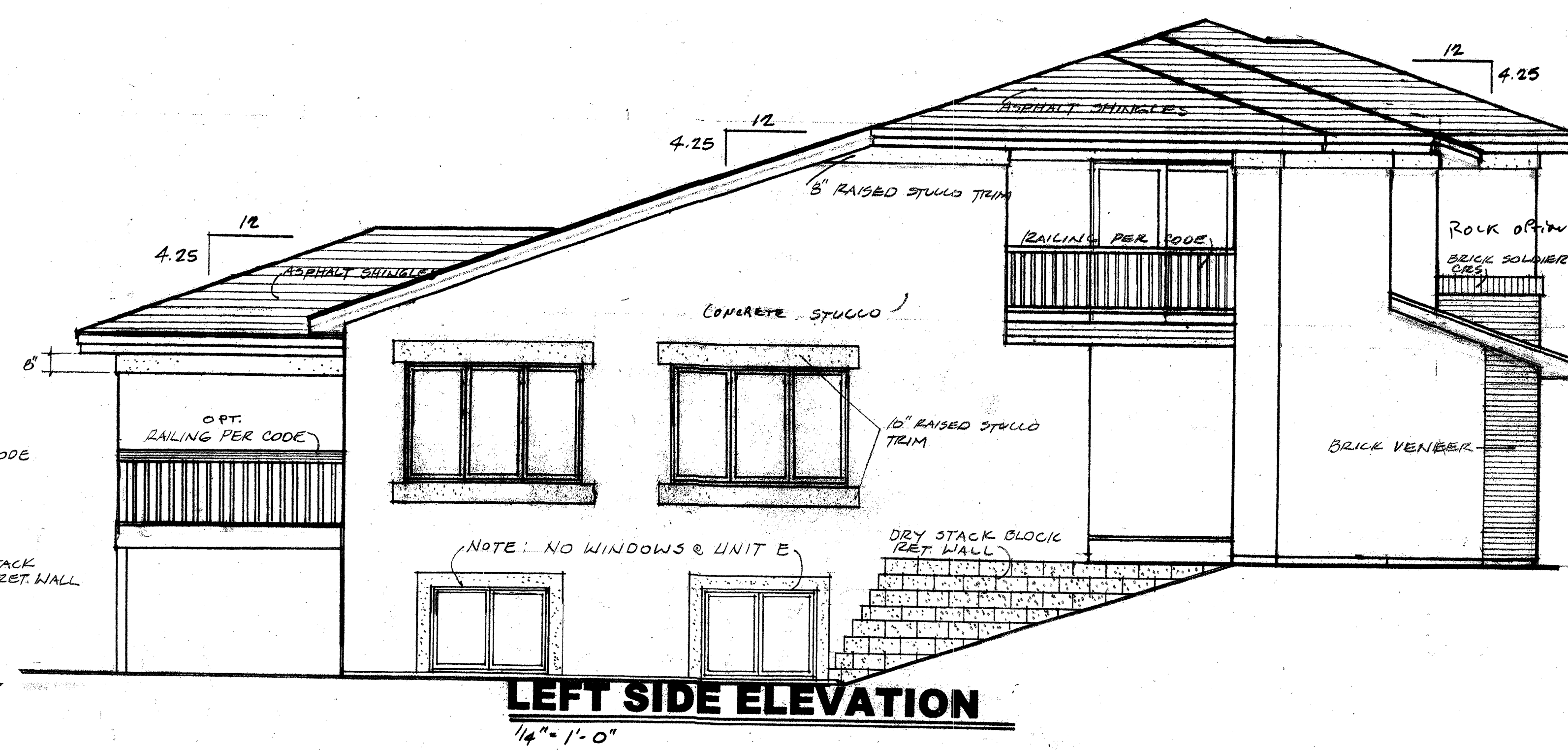
FRONT ELEVATION
 1/4" = 1'-0"



RIGHT SIDE ELEVATION
 1/4" = 1'-0"

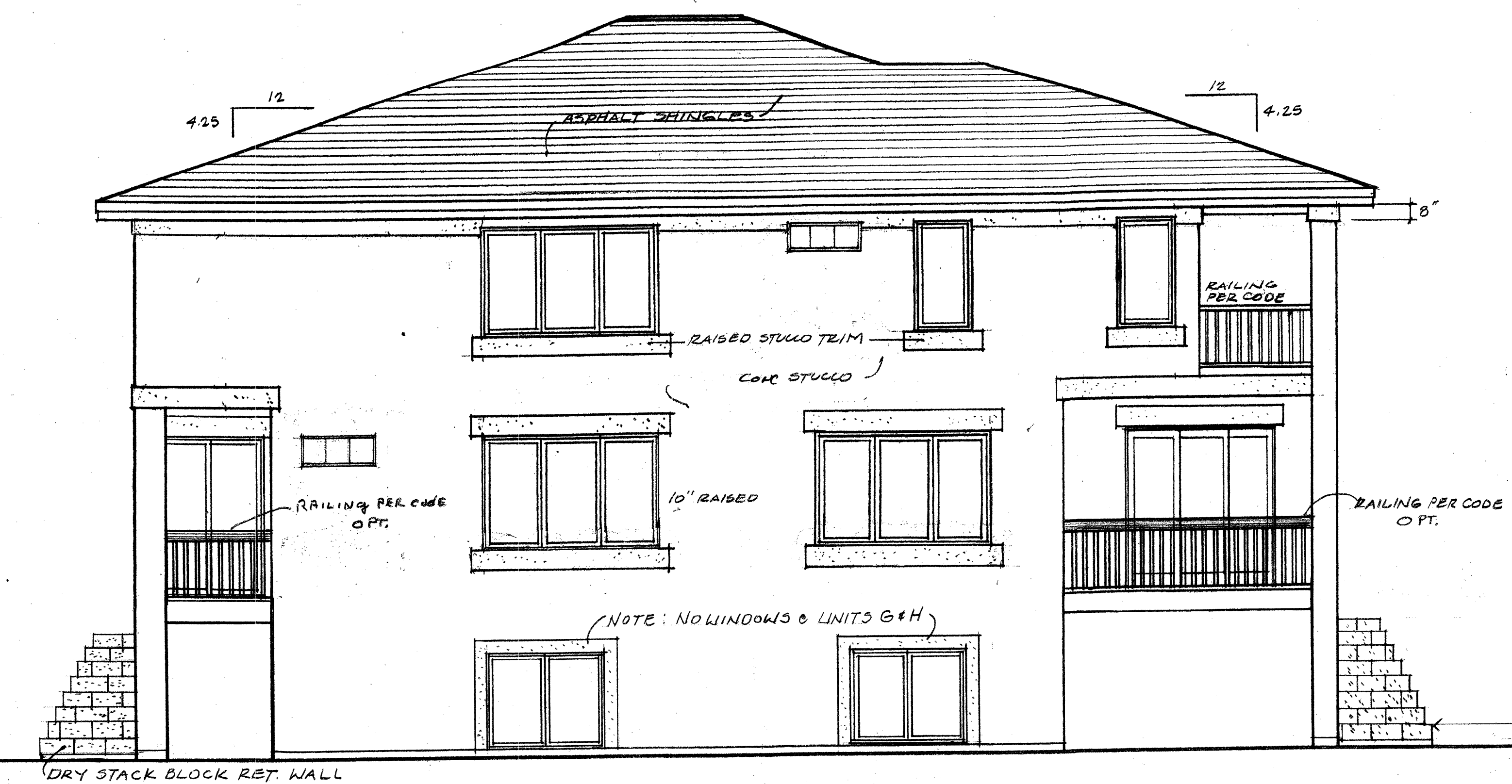


REAR ELEVATION
 1/4" = 1'-0"



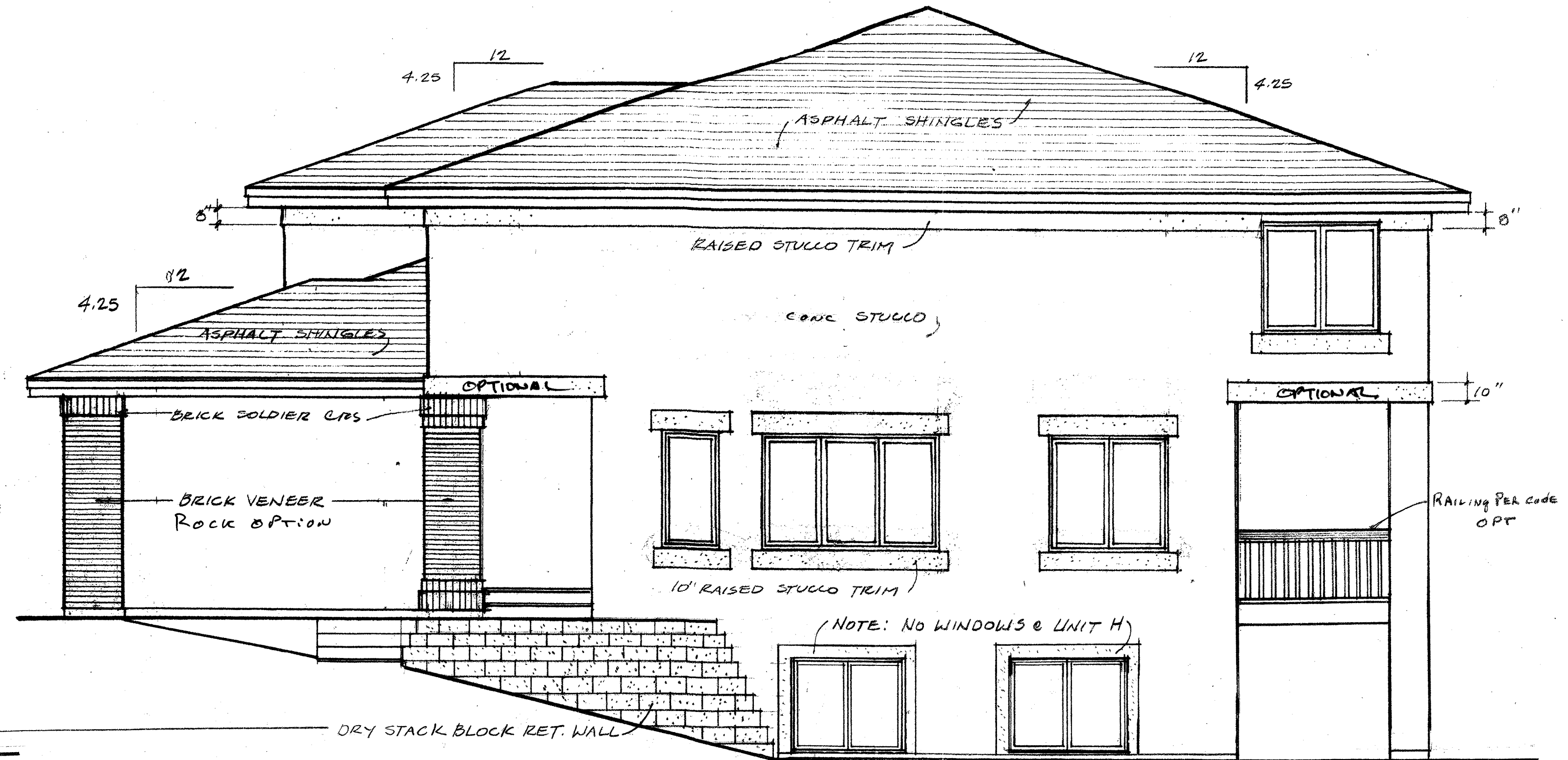
LEFT SIDE ELEVATION
 1/4" = 1'-0"

4-13
 Mylar Change 12/15/05



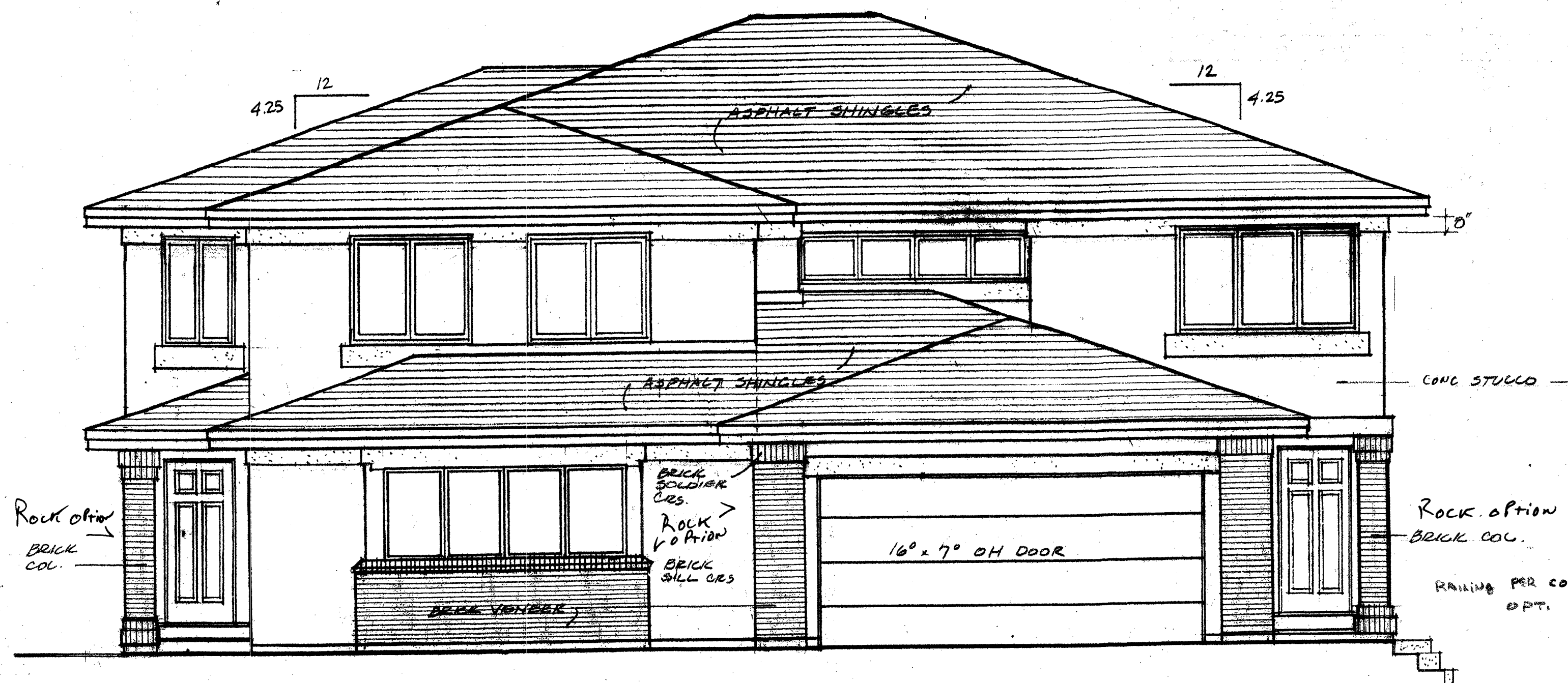
REAR ELEVATION

1/4" = 1'-0"



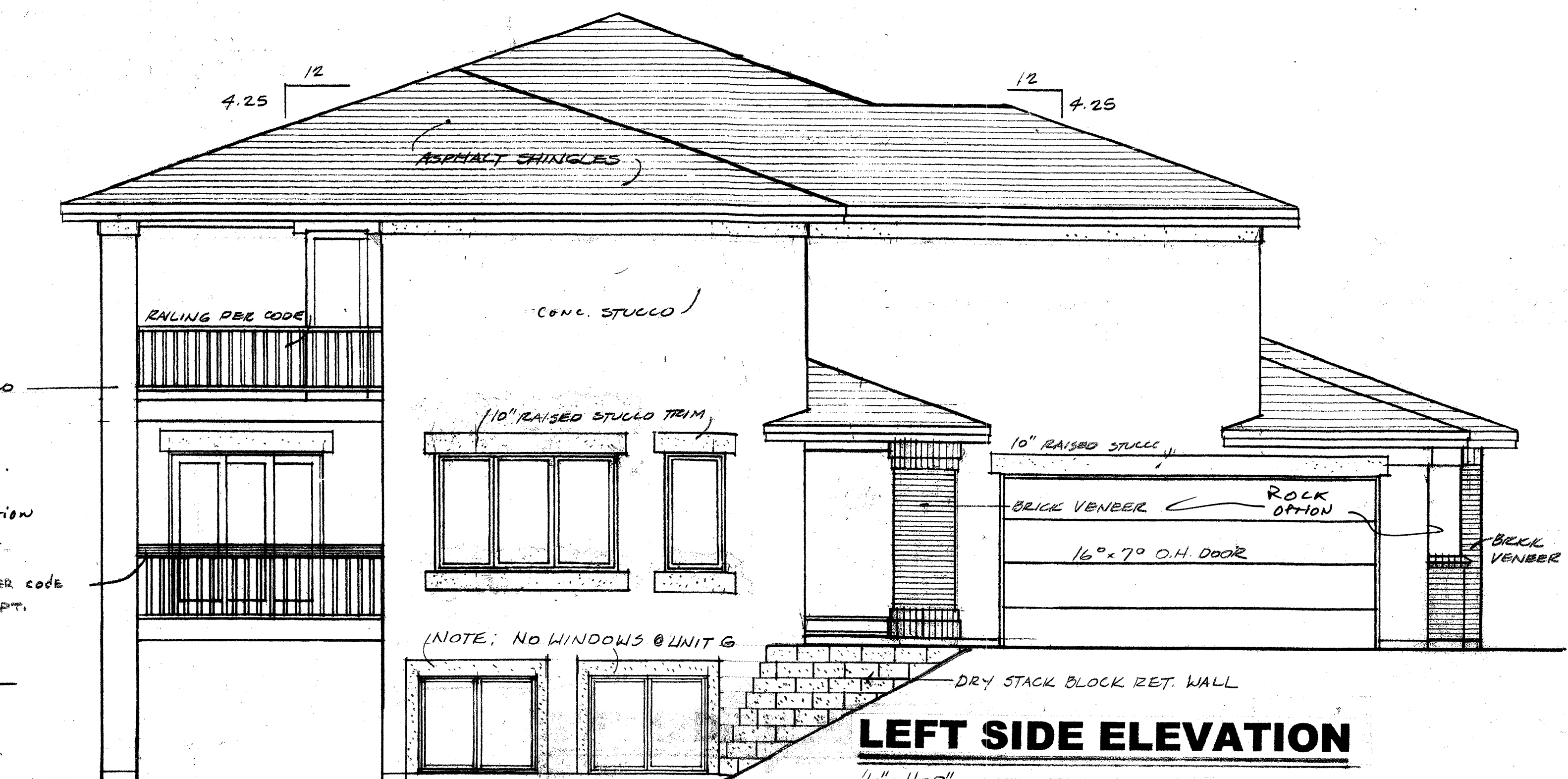
RIGHT SIDE ELEVATION

1/4" = 1'-0"



FRONT ELEVATION

1/4" = 1'-0"



LEFT SIDE ELEVATION

1/4" = 1'-0"

**Typical For
UNIT "G" UNIT "H"
UNIT "C" UNIT "D"
GARDEN LEVEL OPTION**

William Hardison & Associates

8638 West Ottawa Avenue
Ste. 140-B
Littleton, CO. 80123
(303) 979-3024

KINGSTON PLACE

A Development of Kingston Place Devco, LLC
10164 Umca Run, Littleton, Colorado 80125
Voice: 303-948-7450 Fax: 303-948-7451

DATE:
DRAWN:
REV: 10/10/04

PROJECT

DRAWING

AR-4

SHEET 12 OF 12

KINGSTON PLACE 2004-4008-00