

# WASHINGTON PRIME GROUP™

## RESTAURANT BOLT-ON DESIGN CONCEPT

TOWN CENTER AT AURORA | Aurora, CO

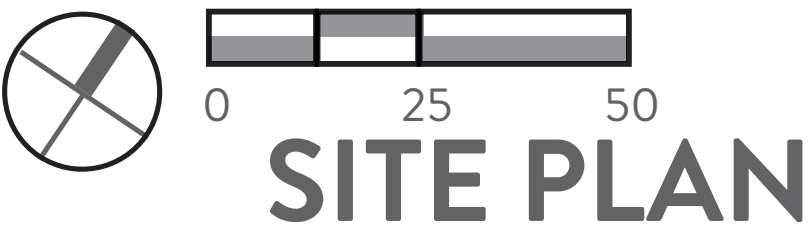
21.0001952.000

SEPTEMBER 20, 2023

# NELSON



- NOTES
- 1 Sign with concrete seating plinth for instagram moment
  - 2 Seat wall adjacent to passenger drop off
  - 3 Screened Loading Dock
  - 4 New Stair/Elevator
  - 5 Gathering spot with outdoor seating and fire pit
  - 6 Green with seating and festoon lighting
  - 7 Restaurant outdoor seating
  - 8 Sculpture
  - 9 Farmer's Market Zone
  - 10 Mall Entrance
  - 11 Sprinkler Room





Perspective Mall entry



Perspective new Mall entrance at night



Perspective new Mall entrance at day



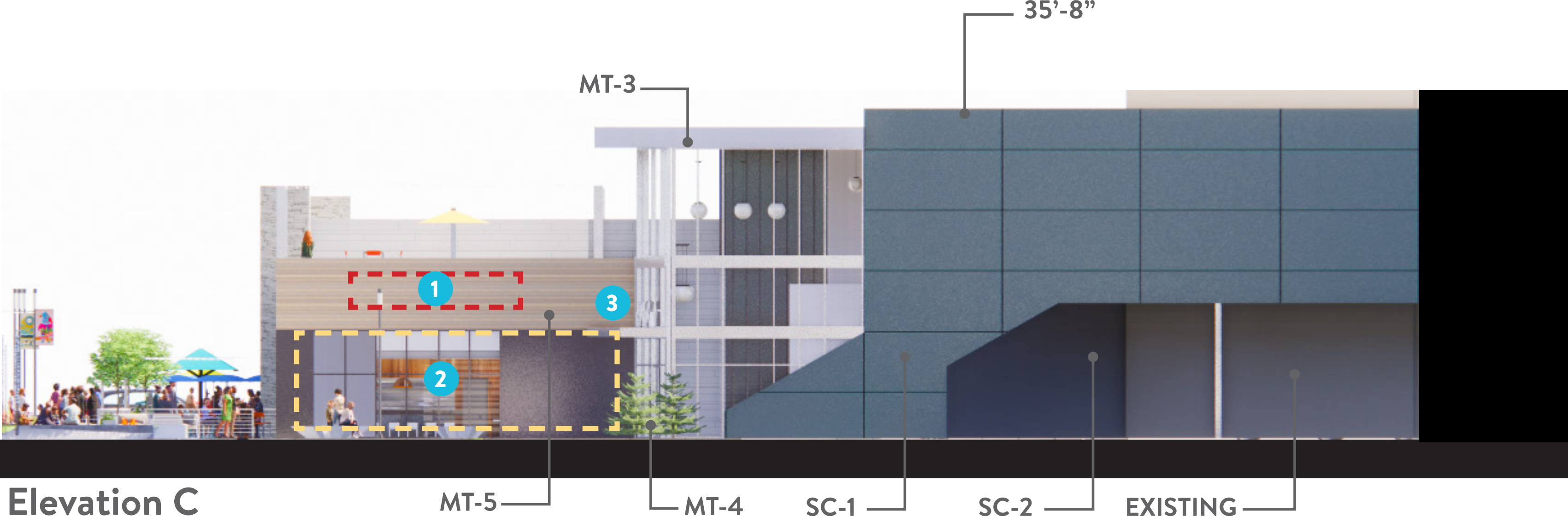
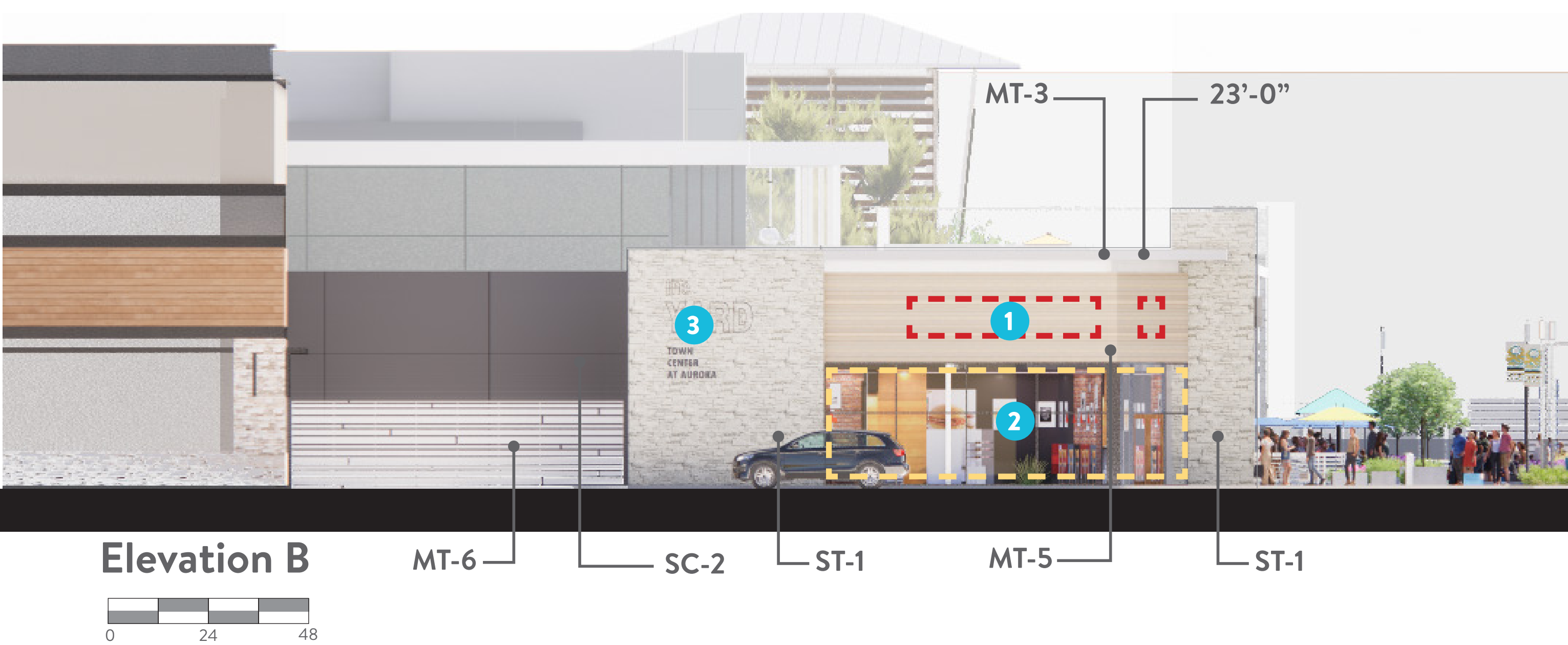
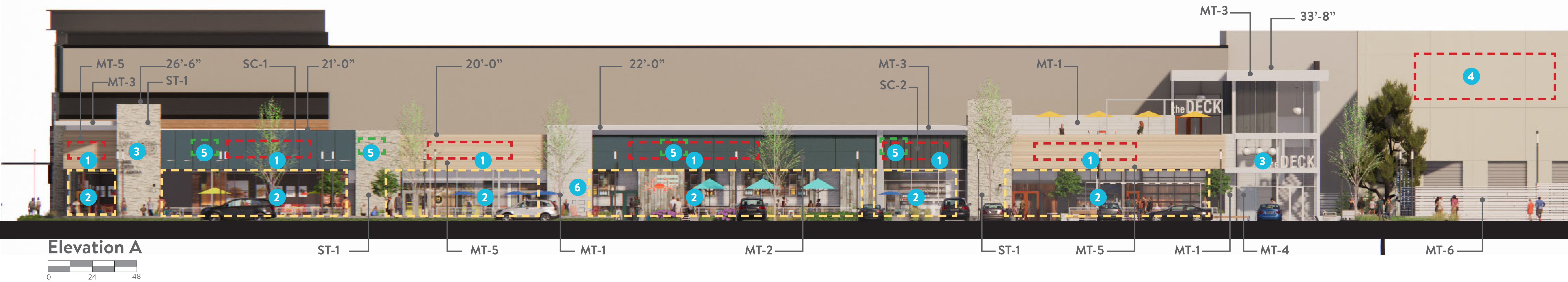
elevation



Perspective Tenant 2 and 3



Perspective Tenant 1



# Materials

MT-3 Metal Ceiling/Fascia

MT-5 Linear metal siding

Three coat stucco SC- 2

MT-2 Metal Siding 2

Three coat stucco SC- 1

ST-1 Stone

MT-4 Alum. Storefront

MT-1 Linear metal siding  
MT-6 Linear metal fence

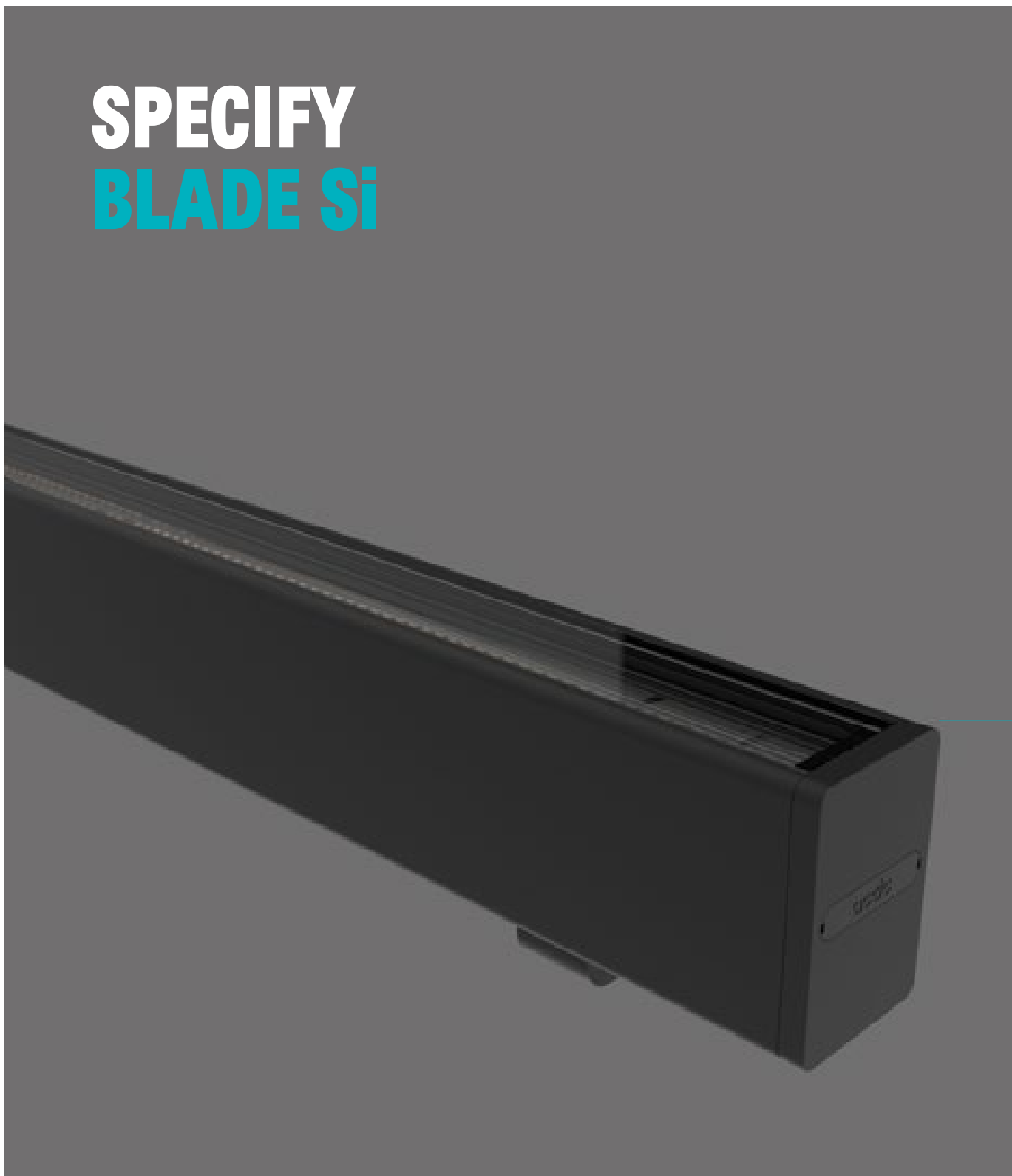
- NOTES
- 1 Tenant Sign by future tenant
  - 2 Tenant Storefront by future tenant per local code.
  - 3 Property sign
  - 4 Mall tenant sign by future tenant
  - 5 Roof top unit
  - 6 Knock Box and FDC with signage



F-1 Pole Light



F-3 Indirect canopy/cornice light



F-4 Wall sconce



F-6 Festoon lights



# Light Fixtures

**NELSON**