

KINGS POINT NORTH

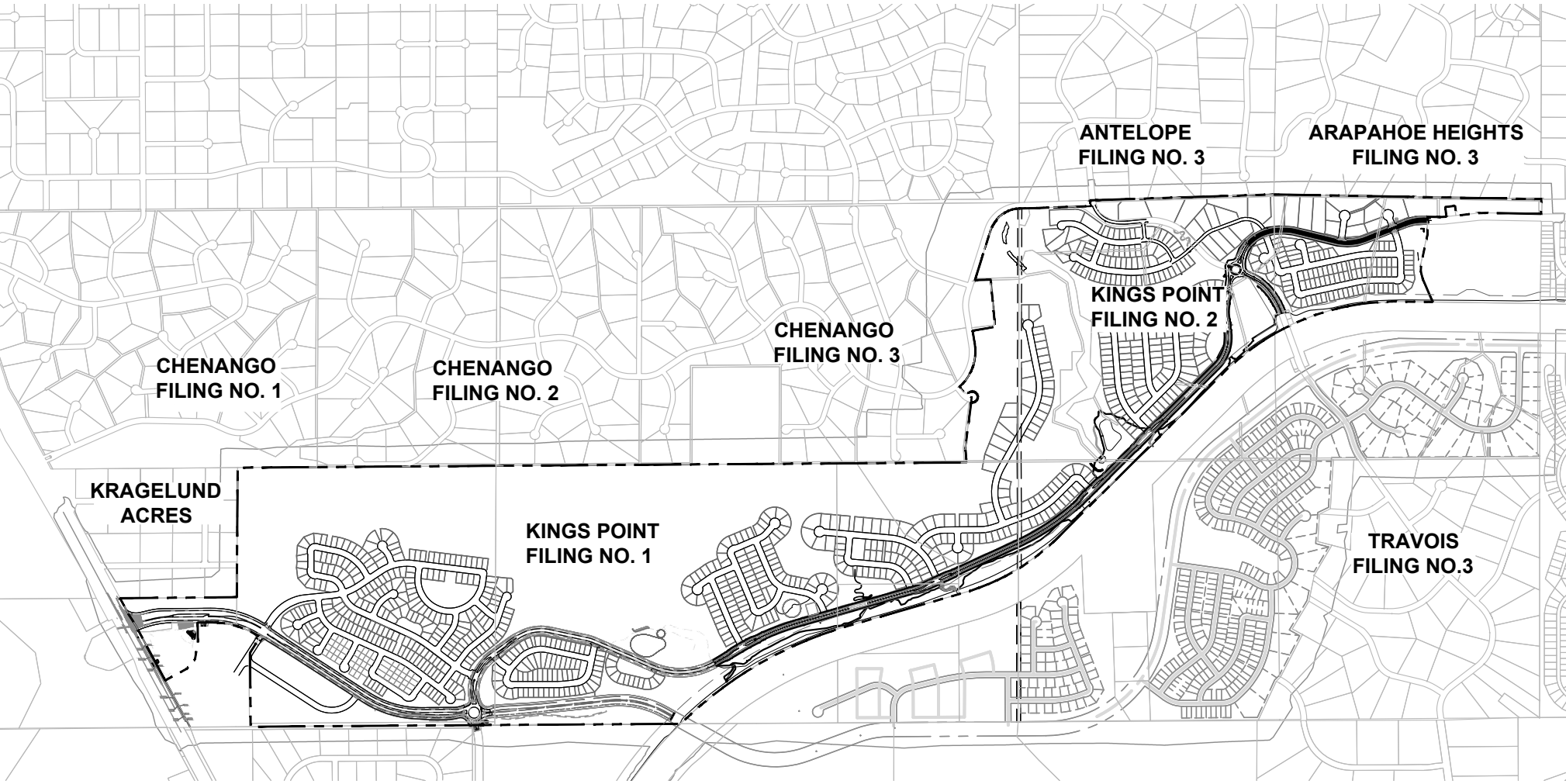
ISP EAST & FILING 1&2 TREE PROTECTION PLAN

AURORA, COLORADO

SHEET INDEX

| | |
|-------|---|
| TP-1 | COVER |
| TP-2 | FILING 1 TREE PROTECTION PLAN |
| TP-3 | FILING 1 RELOCATED TREES PLAN |
| TP-4 | MITIGATED TREES PLAN |
| TP-5 | FILING 1 TREE INVENTORY DATA |
| TP-6 | FILING 1 TREE MITIGATION/PROTECTION CHARTS |
| TP-7 | FILING 2 TREE PROTECTION PLAN |
| TP-8 | FILING 2 TREE INVENTORY DATA |
| TP-9 | FILING 2 TREE MITIGATION/PROTECTION CHARTS |
| TP-10 | FILING 2 NON BLACK FOREST TREE MITIGATION/PROTECTION CHARTS |
| TP-11 | TREE MITIGATION DETAILS |
| TP-12 | TREE PROTECTION NOTES |

VICINITY MAP



CITY OF AURORA APPROVALS

THIS TREE PROTECTION PLAN IS APPROVED IN ACCORDANCE WITH THE CITY OF AURORA BLACK FOREST ORDINANCE.

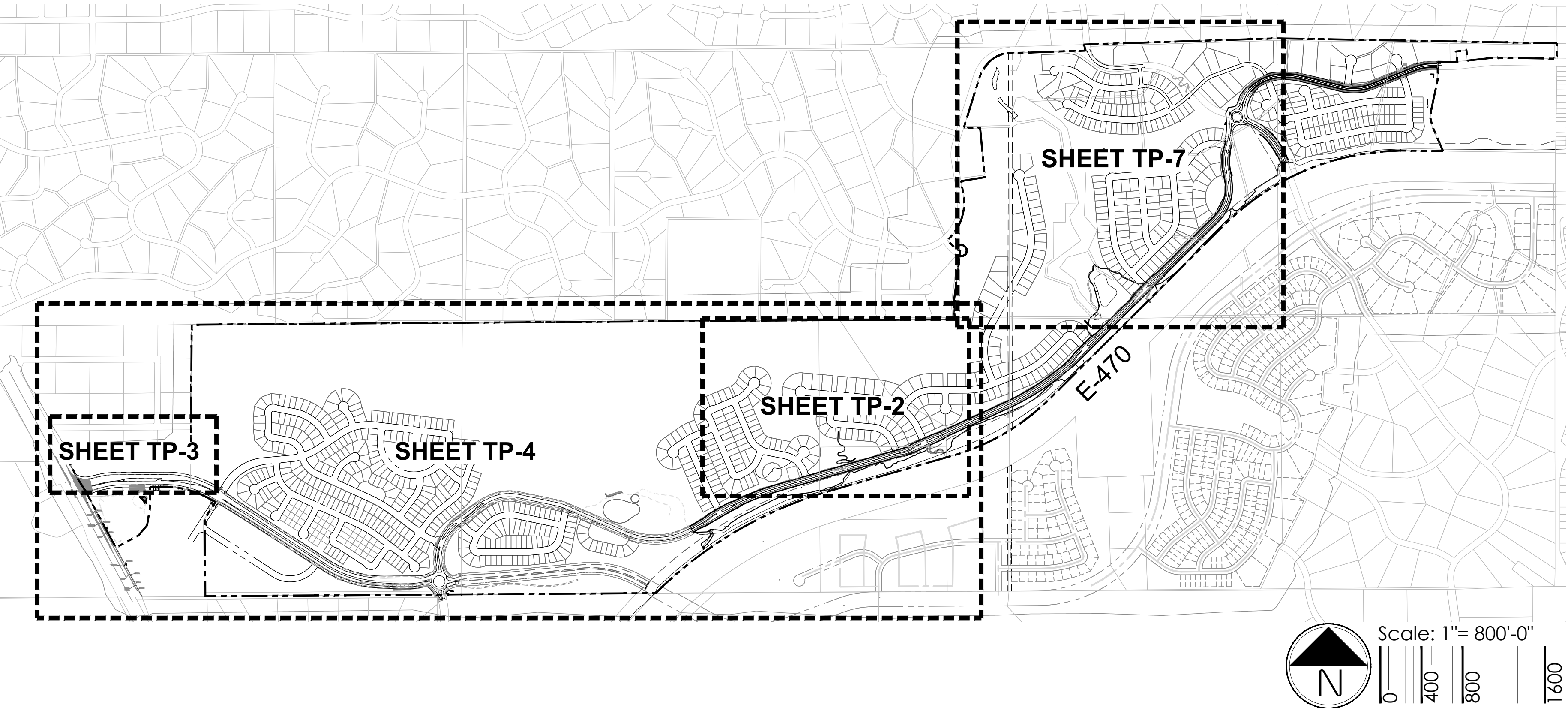
FORESTRY DIVISION: _____ DATE: _____

RECORDER'S CERTIFICATE:
Accepted for filing in the office of the Clerk and Recorder of _____, COLORADO AT _____
O'CLOCK ____ M,
THIS ____ DAY OF _____ AD, ____.

CLERK AND RECORDER: _____
DEPUTY: _____

REFER TO SHEET TPP 5 & 8 FOR SUMMARY TABLES AND OVERALL TREE PROTECTION PLAN SUMMARY.

SHEET KEY MAP



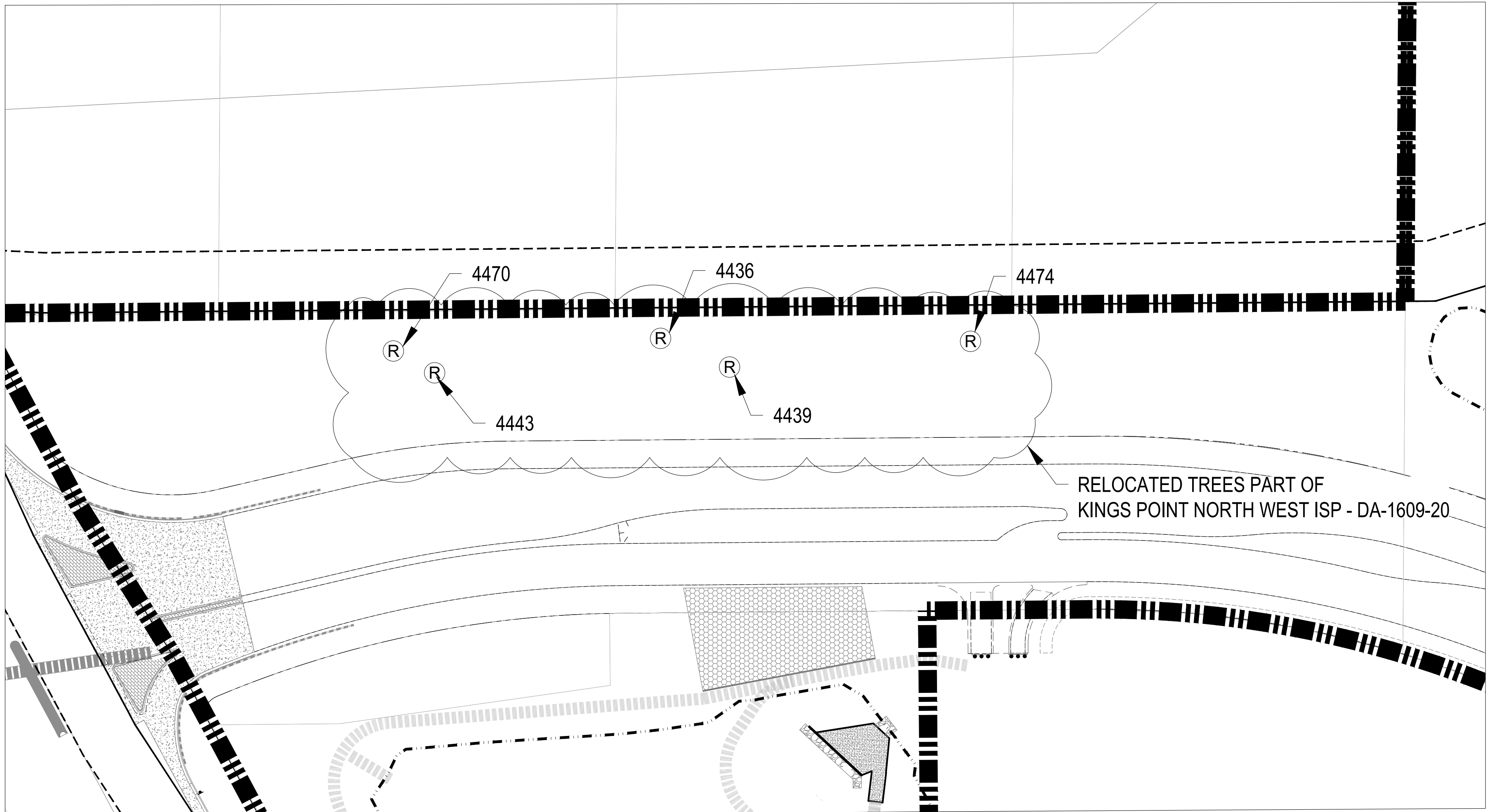
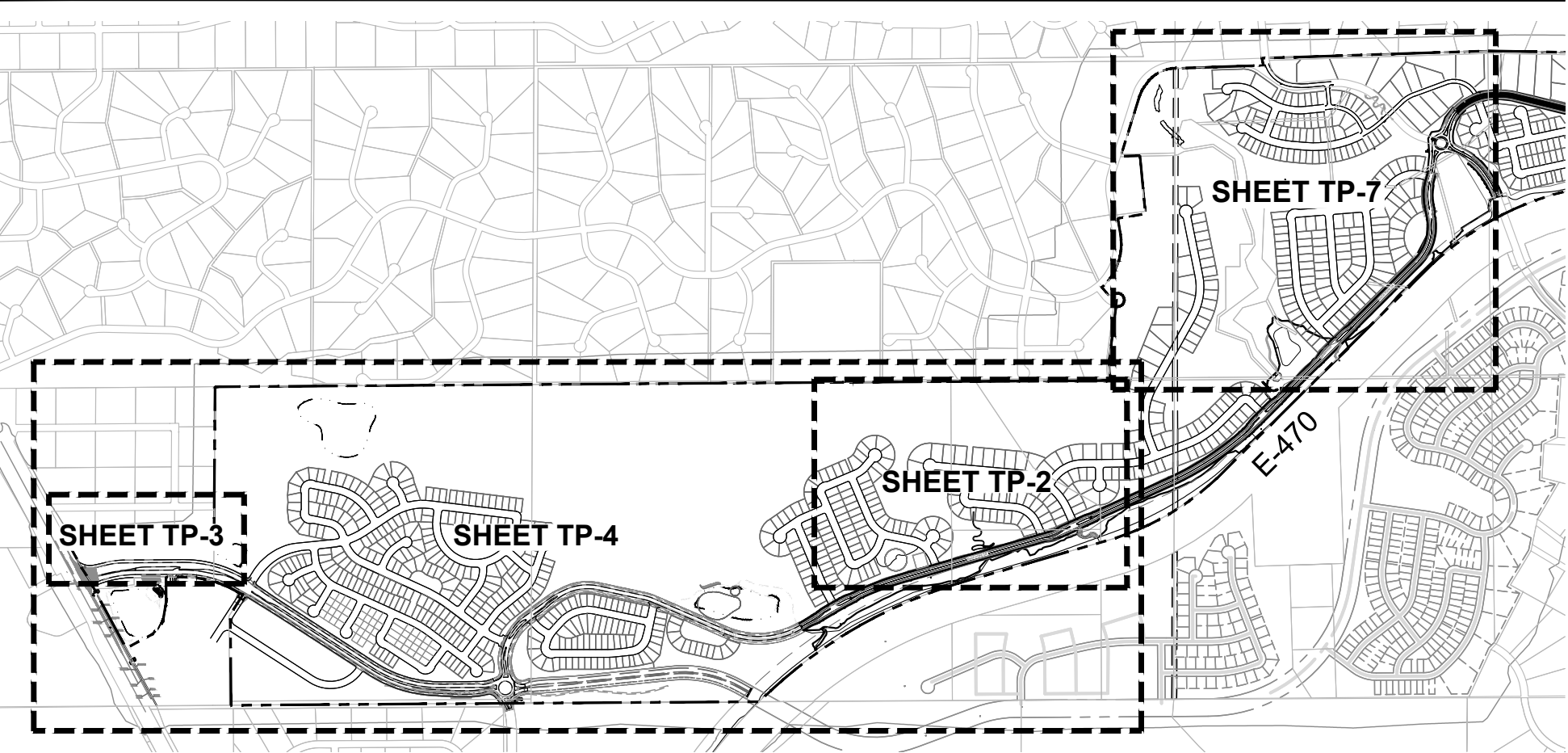
NOTES

1. TREE INVENTORY REFLECTED IN THIS PLAN SET WAS UPDATED BY SCOTT GRIMES, ARBORIST ON JUNE 14TH 2021 & OCTOBER 13,2022. ORIGINAL INVENTORY BY STEVE DAY ON MAY 4TH, 2015.

ISP EAST FILING 1&2

| TREE PROTECTION OVERALL SITE DATA | | |
|-----------------------------------|----------|---------------------|
| BLACK FOREST TREES | QUANTITY | PROPOSED PERCENTAGE |
| REMOVED TREES | 19 | 32% |
| PRESERVED TREES | 29 | 68% |
| PRESERVED TREES (RELOCATED) | 11 | |
| TOTAL | 59 | |

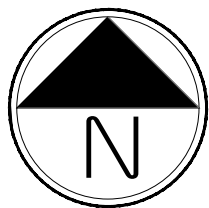
SHEET KEY MAP



FILING 1 RELOCATED TREES

LEGEND

(R) Relocated Tree Location



Scale: 1"= 150'-0"

KINGS POINT NORTH
AURORA, COLORADO
TREE PROTECTION PLAN

SHEET TITLE

FILING 1
RELOCATED TREES
PLAN

SHEET NUMBER

TP.3

SHEET 3 OF 12

NOVEMBER 30, 2022

BLACK FOREST TREE MITIGATION SUMMARY - FILING 1

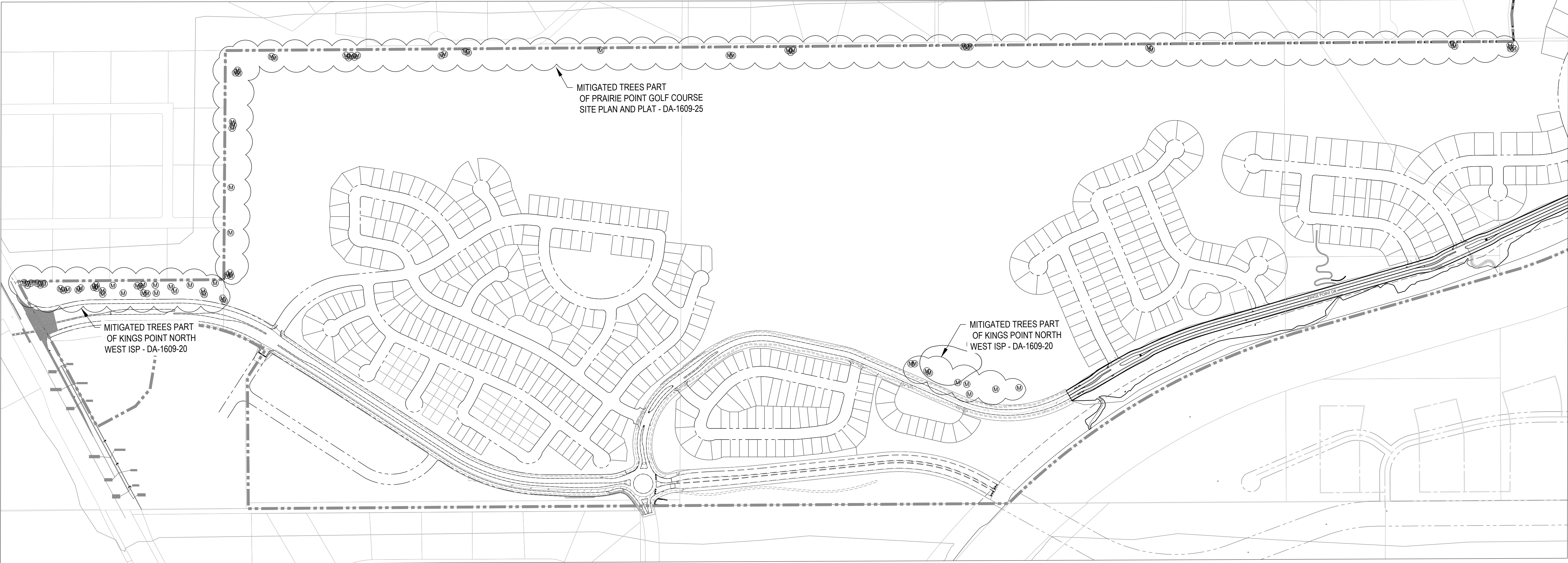
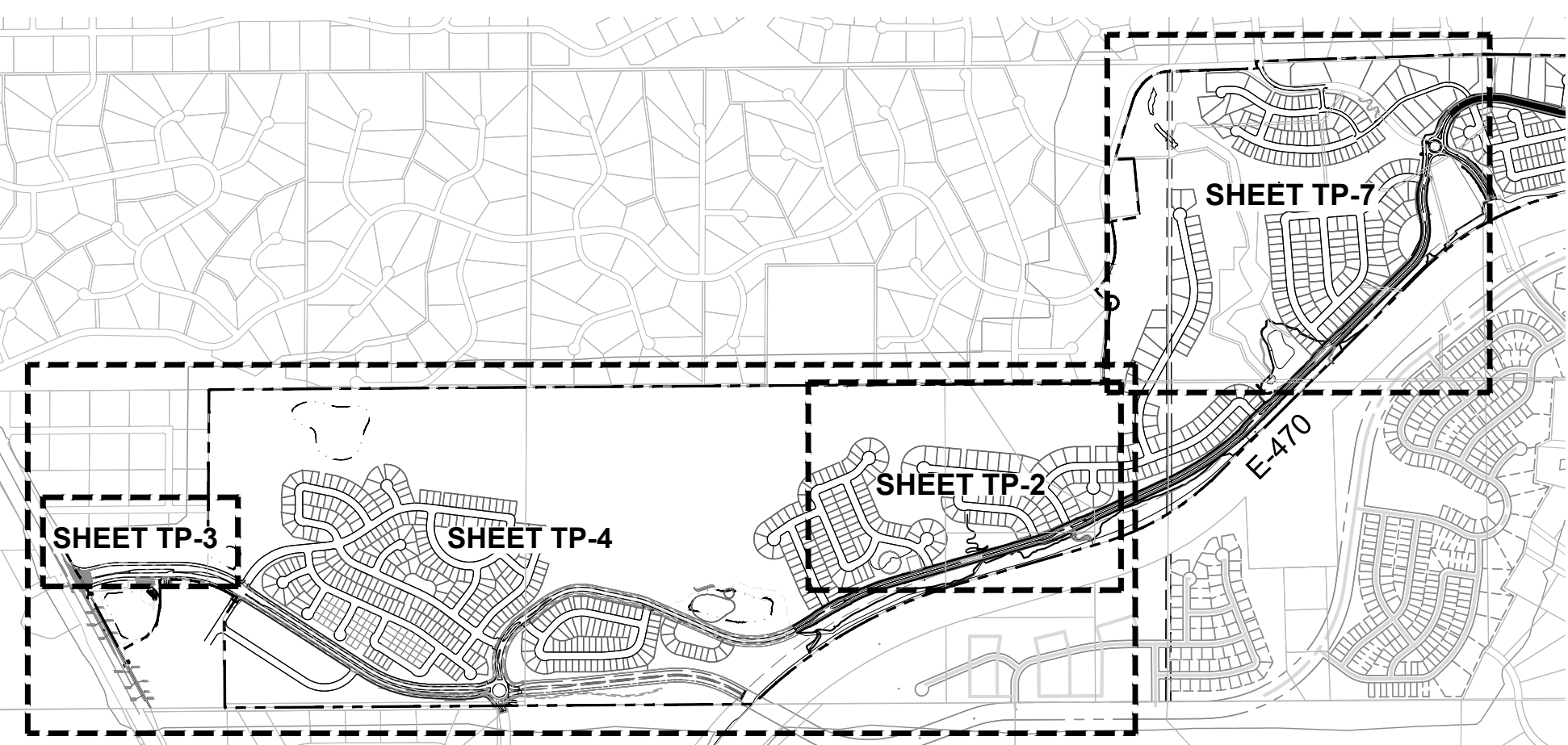
| | PRESERVED TREES | RELOCATED TREES | ESCROW TREES | REMOVED AND REQ. MITIGATED TREES | MITIGATION TREES PROVIDED | | |
|-------------|-----------------|-----------------|--------------|----------------------------------|---------------------------|-----|--------|
| TOTAL TREES | TREES RELOCATED | | | | HEIGHT | QTY | INCHES |
| 36 | 21 | 5 | 24 | 10 | 6' HT. PONDEROSA PINES | 42 | 126" |
| | 58% | 14% | \$102,095 | 28% | | | |
| | | | | MITIGATION INCHES 124.6" | | | |

BLACK FOREST TREE MITIGATION SUMMARY - FILING 2

| | PRESERVED TREES | RELOCATED TREES | ESCROW TREES | REMOVED AND REQ. MITIGATED TREES | MITIGATION TREES PROVIDED | | |
|-------------|-----------------|-----------------|--------------|----------------------------------|---------------------------|-----|--------|
| TOTAL TREES | TREES RELOCATED | | | | HEIGHT | QTY | INCHES |
| 23 | 8 | 6 | 14 | 9 | 6' HT. PONDEROSA PINES | 38 | 114" |
| | 35% | 26% | \$ 21,031 | 39% | | | |
| | | | | MITIGATION INCHES 112.7" | | | |

TOTAL MITIGATED TREES REQUIRED: 80

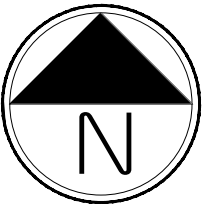
SHEET KEY MAP



MITIGATED TREES

LEGEND

Ⓜ Mitigated Tree Location



Scale: 1"= 150'-0"

KINGS POINT NORTH
AURORA, COLORADO
TREE PROTECTION PLAN

SHEET TITLE

MITIGATED TREES
PLAN

SHEET NUMBER

TP.4

SHEET 4 OF 12

NOVEMBER 30, 2022

BLACK FOREST TREE INVENTORY - FILING 1

| TREE # | SPECIES | DBH | SPEC % | LOC. % | COND % 2021 | MITIGATION INCHES 2021 | \$ VALUE 2021 | COMMENTS | ACTION |
|--------|----------------|------|--------|--------|-------------|------------------------|---------------|--------------------|---------------------|
| 4396 | Ponderosa Pine | 18 | 80% | 70% | 40% | 7.2 | \$3,709.00 | | Remove |
| 4397 | Ponderosa Pine | 20 | 80% | 70% | 0% | 0 | - | | Dead |
| 4398 | Ponderosa Pine | 19 | 80% | 70% | 60% | 11.4 | \$6,199.00 | | Preserve |
| 4399 | Ponderosa Pine | 19.5 | 80% | 70% | 65% | 12.7 | \$7,073.00 | | Preserve |
| 4400A | Ponderosa Pine | 19.5 | 80% | 70% | 60% | 11.7 | \$6,529.00 | | Preserve |
| 4400B | Ponderosa Pine | 6 | 80% | 70% | 60% | 3.6 | \$618.00 | | Preserve |
| 4402 | Ponderosa Pine | 22 | 80% | 70% | 0% | 0 | - | | Dead |
| 4403 | Ponderosa Pine | 0 | 80% | 70% | 0% | 0 | - | | Dead |
| 4404 | Ponderosa Pine | 14.5 | 80% | 70% | 0% | 8.7 | \$3,610.00 | | Dead |
| 4405 | Ponderosa Pine | 15 | 80% | 70% | 0% | 0 | - | | Dead |
| 4409 | Ponderosa Pine | 22.5 | 80% | 70% | 60% | 13.5 | \$8,693.00 | | Preserve |
| 4410 | Ponderosa Pine | 17 | 80% | 70% | 0% | 8.5 | \$4,135.00 | | Dead |
| 4412 | Ponderosa Pine | 20 | 80% | 70% | 0% | 12 | \$6,868.00 | | Dead |
| 4414 | Ponderosa Pine | 24 | 80% | 70% | 65% | 15.6 | \$10,715.00 | | Remove |
| 4415 | Ponderosa Pine | 27 | 80% | 70% | 65% | 17.6 | \$13,561.00 | | Remove |
| 4425 | Ponderosa Pine | 18 | 80% | 70% | 60% | 10.8 | \$5,563.00 | | Preserve |
| 4426 | Ponderosa Pine | 17.5 | 80% | 70% | 65% | 11.4 | \$5,697.00 | | Preserve |
| 4427 | Ponderosa Pine | 22 | 80% | 70% | 65% | 14.3 | \$9,003.00 | | Preserve |
| 4428 | Ponderosa Pine | 21 | 80% | 70% | 60% | 12.6 | \$7,572.00 | | Preserve |
| 4429 | Ponderosa Pine | 15.5 | 80% | 70% | 35% | 5.4 | \$2,406.00 | | Preserve |
| 4430 | Ponderosa Pine | 10.5 | 80% | 70% | 40% | 4.7 | \$1,420.00 | | Preserve |
| 4431 | Ponderosa Pine | 11.5 | 80% | 70% | 70% | 8.1 | \$2,649.00 | | Preserve |
| 4436 | Ponderosa Pine | 7.5 | 80% | 70% | 70% | 5.3 | \$1,127.00 | | Preserve (Relocate) |
| 4439 | Ponderosa Pine | 9 | 80% | 70% | 75% | 6.8 | \$1,739.00 | | Preserve (Relocate) |
| 4440 | Ponderosa Pine | 21 | 80% | 70% | 60% | 12.6 | \$7,572.00 | | Remove |
| 4441 | Ponderosa Pine | 0 | 80% | 70% | 0% | 0.0 | - | | Dead |
| 4442 | Ponderosa Pine | 0 | 80% | 70% | 0% | 0.0 | - | | Dead |
| 4443 | Ponderosa Pine | 5 | 80% | 70% | 55% | 2.8 | \$393.00 | | Preserve (Relocate) |
| 4444 | Ponderosa Pine | 0 | 80% | 70% | 0% | 0.0 | - | | Dead |
| 4445 | Ponderosa Pine | 0 | 80% | 70% | 0% | 0.0 | - | | Gone |
| 4446 | Ponderosa Pine | 18 | 80% | 70% | 50% | 9 | \$4,636.00 | Fill Against Trunk | Preserve |
| 4447 | Ponderosa Pine | 0 | 80% | 70% | 0% | 0.0 | - | | Gone |
| 4448 | Ponderosa Pine | 0 | 80% | 70% | 0% | 0.0 | - | | Gone |
| 4449 | Ponderosa Pine | 0 | 80% | 70% | 0% | 0.0 | - | | Gone |
| 4450 | Ponderosa Pine | 24 | 80% | 70% | 0% | 0 | - | | Dead |
| 4451 | Ponderosa Pine | 26 | 80% | 70% | 60% | 15.6 | \$11,607.00 | | Remove |
| 4452 | Ponderosa Pine | 13.5 | 80% | 70% | 70% | 10.1 | \$3,912.00 | | Remove |
| 4453 | Ponderosa Pine | 15 | 80% | 70% | 60% | 9 | \$3,863.00 | | Remove |
| 4455A | Ponderosa Pine | 23 | 80% | 70% | 45% | 12.7 | \$8,326.00 | | Remove |
| 4455B | Ponderosa Pine | 8.5 | 80% | 70% | 55% | 4.7 | \$1,137.00 | | Remove |
| 4456 | Ponderosa Pine | 26 | 80% | 70% | 75% | 19.5 | \$14,509.00 | | Remove |
| 4457 | Ponderosa Pine | 0 | 80% | 70% | 0% | 0.0 | - | | Gone |
| 4458 | Ponderosa Pine | 0 | 80% | 70% | 0% | 0.0 | - | | Gone |
| 4463 | Ponderosa Pine | 15 | 80% | 70% | 40% | 6 | \$2,576.00 | | Preserve |
| 4464 | Ponderosa Pine | 0 | 80% | 70% | 0% | 0.0 | - | | Dead |
| 4466A | Ponderosa Pine | 15 | 80% | 70% | 60% | 9.3 | \$4,125.00 | | Preserve |
| 4466B | Ponderosa Pine | 5 | 80% | 70% | 60% | 3 | \$429.00 | | Preserve |
| 4468 | Ponderosa Pine | 20 | 80% | 70% | 40% | 8 | \$4,579.00 | | Preserve |
| 4469 | Ponderosa Pine | 24 | 80% | 70% | 55% | 13.2 | \$9,066.00 | | Preserve |
| 4470 | Ponderosa Pine | 12 | 80% | 70% | 60% | 7.2 | \$2,473.00 | | Preserve (Relocate) |
| 4473 | Ponderosa Pine | 17.5 | 80% | 70% | 60% | 10.5 | \$5,259.00 | | Preserve |
| 4474 | Ponderosa Pine | 11.5 | 80% | 70% | 60% | 6.9 | \$2,271.00 | | Preserve (Relocate) |
| 4475 | Ponderosa Pine | 21 | 80% | 70% | 60% | 12.6 | \$7,572.00 | | Preserve |
| 4476 | Ponderosa Pine | 20 | 80% | 70% | 70% | 14 | \$8,013.00 | | Preserve |

NON-BLACK FOREST TREE INVENTORY - FILING 1

| Tree # | Species | DBH | SPEC % | COND % 2021 | LOC. % | \$ VALUE 2021 | MITIGATION INCHES 2021 | Comments | Action |
|--|--------------|-----|--------|-------------|--------|---------------|------------------------|----------|--------|
| Kings Point Tree Inventory Data-Filing 1 | | | | | | | | | |
| Trees Other Than Ponderosa Pine : | | | | | | | | | |
| A | Black Willow | 17 | 75 | 50 | 70 | \$ 3,099.00 | 6.0 | 7 Stems | Remove |
| C | Black Willow | 11 | 75 | 30 | 70 | \$ 778.00 | 3.8 | 7 Stems | Remove |



PROJECT NAME

KINGS POINT NORTH
AURORA, COLORADO
TREE PROTECTION PLAN

SHEET TITLE

FILING 1 TREE
INVENTORY DATA

SHEET NUMBER

TP.5

SHEET 5 OF 12

NOVEMBER 30, 2022

BLACK FOREST TREE INVENTORY - FILING 1

| BLACK FOREST - TREE PRESERVATION DATA - FILING 1 | | | | | | | | | |
|--|----------------|------|--------|--------|-------------|------------------------|---------------|--------------------|----------|
| TREE # | SPECIES | DBH | SPEC % | LOC. % | COND % 2021 | MITIGATION INCHES 2021 | \$ VALUE 2021 | COMMENTS | ACTION |
| 4398 | Ponderosa Pine | 19 | 80% | 70% | 60% | 11.4 | \$6,199.00 | | Preserve |
| 4399 | Ponderosa Pine | 19.5 | 80% | 70% | 65% | 12.7 | \$7,073.00 | | Preserve |
| 4409 | Ponderosa Pine | 22.5 | 80% | 70% | 60% | 13.5 | \$8,693.00 | | Preserve |
| 4425 | Ponderosa Pine | 18 | 80% | 70% | 60% | 10.8 | \$5,563.00 | | Preserve |
| 4426 | Ponderosa Pine | 17.5 | 80% | 70% | 65% | 11.4 | \$5,697.00 | | Preserve |
| 4427 | Ponderosa Pine | 22 | 80% | 70% | 65% | 14.3 | \$9,003.00 | | Preserve |
| 4428 | Ponderosa Pine | 21 | 80% | 70% | 60% | 12.6 | \$7,572.00 | | Preserve |
| 4429 | Ponderosa Pine | 15.5 | 80% | 70% | 35% | 5.4 | \$2,406.00 | | Preserve |
| 4430 | Ponderosa Pine | 10.5 | 80% | 70% | 40% | 4.7 | \$1,420.00 | | Preserve |
| 4431 | Ponderosa Pine | 11.5 | 80% | 70% | 70% | 8.1 | \$2,649.00 | | Preserve |
| 4446 | Ponderosa Pine | 18 | 80% | 70% | 50% | 9 | \$4,636.00 | Fill Against Trunk | Preserve |
| 4463 | Ponderosa Pine | 15 | 80% | 70% | 40% | 6 | \$2,576.00 | | Preserve |
| 4468 | Ponderosa Pine | 20 | 80% | 70% | 40% | 8 | \$4,579.00 | | Preserve |
| 4469 | Ponderosa Pine | 24 | 80% | 70% | 55% | 13.2 | \$9,066.00 | | Preserve |
| 4473 | Ponderosa Pine | 17.5 | 80% | 70% | 60% | 10.5 | \$5,259.00 | | Preserve |
| 4475 | Ponderosa Pine | 21 | 80% | 70% | 60% | 12.6 | \$7,572.00 | | Preserve |
| 4476 | Ponderosa Pine | 20 | 80% | 70% | 70% | 14 | \$8,013.00 | | Preserve |
| 4400A | Ponderosa Pine | 19.5 | 80% | 70% | 60% | 11.7 | \$6,529.00 | | Preserve |
| 4400B | Ponderosa Pine | 6 | 80% | 70% | 60% | 3.6 | \$618.00 | | Preserve |
| 4466A | Ponderosa Pine | 15 | 80% | 70% | 60% | 9.3 | \$4,125.00 | | Preserve |
| 4466B | Ponderosa Pine | 5 | 80% | 70% | 60% | 3 | \$429.00 | | Preserve |
| | | | | | | 205.8 | \$109,677.00 | | |

| BLACK FOREST - TREE TO RELOCATE - FILING 1 | | | | | | | | | |
|--|----------------|------|--------|--------|-------------|------------------------|---------------|----------|---------------------|
| TREE # | SPECIES | DBH | SPEC % | LOC. % | COND % 2021 | MITIGATION INCHES 2021 | \$ VALUE 2021 | COMMENTS | ACTION |
| 4436 | Ponderosa Pine | 7.5 | 80% | 70% | 70% | 5.3 | \$1,127.00 | | Preserve (Relocate) |
| 4439 | Ponderosa Pine | 9 | 80% | 70% | 75% | 6.8 | \$1,739.00 | | Preserve (Relocate) |
| 4443 | Ponderosa Pine | 5 | 80% | 70% | 55% | 2.8 | \$393.00 | | Preserve (Relocate) |
| 4470 | Ponderosa Pine | 12 | 80% | 70% | 60% | 7.2 | \$2,473.00 | | Preserve (Relocate) |
| 4474 | Ponderosa Pine | 11.5 | 80% | 70% | 60% | 6.9 | \$2,271.00 | | Preserve (Relocate) |
| | | | | | | 29 | \$8,003.00 | | |

| BLACK FOREST - TREES TO REMOVE - FILING 1 | | | | | | | | | |
|---|----------------|------|--------|--------|-------------|------------------------|---------------|----------|--------|
| TREE # | SPECIES | DBH | SPEC % | LOC. % | COND % 2021 | MITIGATION INCHES 2021 | \$ VALUE 2021 | COMMENTS | ACTION |
| 4396 | Ponderosa Pine | 18 | 80% | 70% | 40% | 7.2 | \$3,709.00 | | Remove |
| 4414 | Ponderosa Pine | 24 | 80% | 70% | 65% | 15.6 | \$10,715.00 | | Remove |
| 4415 | Ponderosa Pine | 27 | 80% | 70% | 65% | 17.6 | \$13,561.00 | | Remove |
| 4440 | Ponderosa Pine | 21 | 80% | 70% | 60% | 12.6 | \$7,572.00 | | Remove |
| 4451 | Ponderosa Pine | 26 | 80% | 70% | 60% | 15.6 | \$11,607.00 | | Remove |
| 4452 | Ponderosa Pine | 13.5 | 80% | 70% | 70% | 10.1 | \$3,912.00 | | Remove |
| 4453 | Ponderosa Pine | 15 | 80% | 70% | 60% | 9 | \$3,863.00 | | Remove |
| 4455A | Ponderosa Pine | 23 | 80% | 70% | 45% | 12.7 | \$8,326.00 | | Remove |
| 4455B | Ponderosa Pine | 8.5 | 80% | 70% | 55% | 4.7 | \$1,137.00 | | Remove |
| 4456 | Ponderosa Pine | 26 | 80% | 70% | 75% | 19.5 | \$14,509.00 | | Remove |
| | | | | | | 124.6 | \$78,911.00 | | |

BLACK FOREST TREE MITIGATION SUMMARY - FILING 1

| | PRESERVED TREES | RELOCATED TREES | ESCROW TREES | REMOVED AND REQ. MITIGATED TREES | MITIGATION TREES PROVIDED | | |
|-------------|-----------------|-----------------|--------------|----------------------------------|---------------------------|-----|--------|
| TOTAL TREES | TREES RELOCATED | | | | HEIGHT | QTY | INCHES |
| 36 | 21 | 5 | 24 | 10 | 6' HT. PONDEROSA PINES | 42 | 126" |
| | 58% | 14% | \$102,095 | 28% | | | |
| | | | | MITIGATION INCHES 124.6" | | | |

- NOTE:
1. REPLACEMENT TREES ARE TO BE MINIMUM 6' TALL PONDEROSA PINES ON THE MITIGATION RATIO OF 1" DBH=2' HEIGHT.
 2. TOTAL TREES ABOVE EXCLUDES DEAD OR MISSING TREES.
 3. ESCROW TREES INCLUDE PRESERVED TREES WITHIN LIMIT OF CONSTRUCTION (LOC) AND RELOCATED TREES.

NON-BLACK FOREST TREE INVENTORY - FILING 1

| Tree # | Species | DBH | SPEC % | COND % 2021 | LOC. % | \$ VALUE 2021 | MITIGATION INCHES 2021 | Comments | Action |
|--|--------------|-----|--------|-------------|--------|---------------|------------------------|----------|--------|
| Kings Point Tree Inventory Data-Filing 1 | | | | | | | | | |
| Trees Other Than Ponderosa Pine : | | | | | | | | | |
| A | Black Willow | 17 | 75 | 50 | 70 | \$ 3,099.00 | 6.0 | 7 Stems | Remove |
| C | Black Willow | 11 | 75 | 30 | 70 | \$ 778.00 | 3.8 | 7 Stems | Remove |

NON-BLACK FOREST TREE MITIGATION SUMMARY-FILING 1

| Non-Black Forest- Tree Mitigation Summary- Filing 1 | | | | | | |
|---|-----------------|----------------------------------|----------------------|---------------------------|-----|--------|
| | PRESERVED TREES | REMOVED AND REQ. MITIGATED TREES | RELOCATED TREES | MITIGATION TREES PROVIDED | | |
| TOTAL TREES | | | TREES RELOCATED | HEIGHT | QTY | INCHES |
| 2 | 0 | 2 | 0 | 6' HT. PONDEROSA | 4 | 12 |
| | 0% | 100% | 0% | | | |
| | | | MITIGATION INCHES 12 | | | |

TREES WITHIN 50' BUFFER

| TREE # | SPECIES | DBH | SPEC % | LOC. % | COND % 2021 | MITIGATION INCHES 2021 | \$ VALUE 2021 | COMMENTS | ACTION |
|--------|----------------|-----|--------|--------|-------------|------------------------|---------------|--------------------|----------|
| 4446 | Ponderosa Pine | 18 | 80% | 70% | 50% | 9 | \$4,636.00 | Fill Against Trunk | Preserve |

TREES OUTSIDE LOC & 50' BUFFER

| TREE # | SPECIES | DBH | SPEC % | LOC. % | COND % 2021 | MITIGATION INCHES 2021 | \$ VALUE 2021 | COMMENTS | ACTION |
|--------|----------------|-----|--------|--------|-------------|------------------------|---------------|----------|----------|
| 4475 | Ponderosa Pine | 21 | 80% | 70% | 60% | 12.6 | \$7,572.00 | | Preserve |
| 4476 | Ponderosa Pine | 20 | 80% | 70% | 70% | 14 | \$8,013.00 | | Preserve |

BLACK FOREST ESCROW TREES - FILING 1

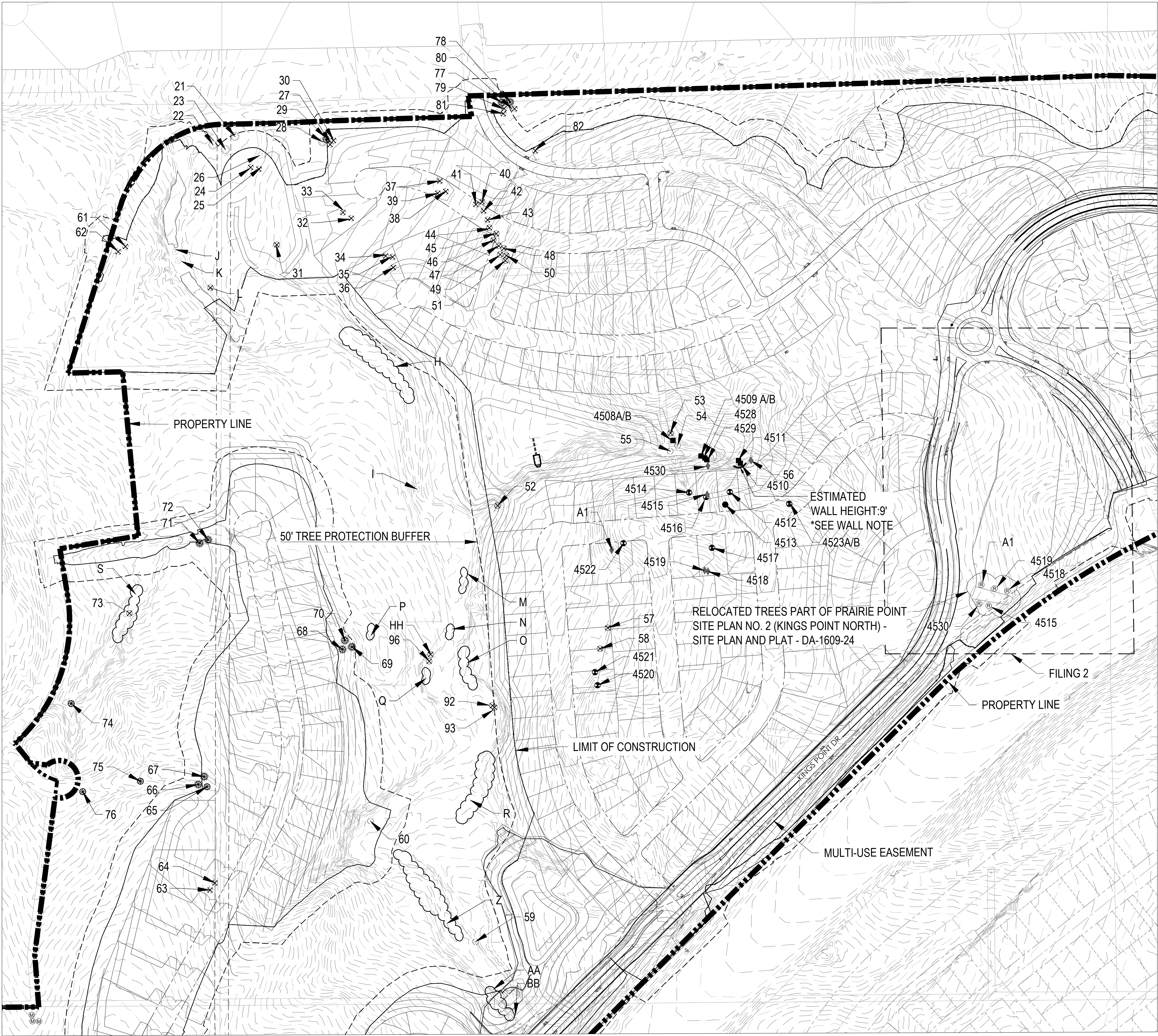
| TREE # | SPECIES | DBH | SPEC % | LOC. % | COND % 2021 | MITIGATION INCHES 2021 | \$ VALUE 2021 | COMMENTS | ACTION |
|--------|----------------|------|--------|--------|-------------|------------------------|---------------|--------------------|---------------------|
| 4398 | Ponderosa Pine | 19 | 80% | 70% | 60% | 11.4 | \$6,199.00 | | Preserve |
| 4399 | Ponderosa Pine | 19.5 | 80% | 70% | 65% | 12.7 | \$7,073.00 | | Preserve |
| 4409 | Ponderosa Pine | 22.5 | 80% | 70% | 60% | 13.5 | \$8,693.00 | | Preserve |
| 4425 | Ponderosa Pine | 18 | 80% | 70% | 60% | 10.8 | \$5,563.00 | | Preserve |
| 4426 | Ponderosa Pine | 17.5 | 80% | 70% | 65% | 11.4 | \$5,697.00 | | Preserve |
| 4427 | Ponderosa Pine | 22 | 80% | 70% | 65% | 14.3 | \$9,003.00 | | Preserve |
| 4428 | Ponderosa Pine | 21 | 80% | 70% | 60% | 12.6 | \$7,572.00 | | Preserve |
| 4429 | Ponderosa Pine | 15.5 | 80% | 70% | 35% | 5.4 | \$2,406.00 | | Preserve |
| 4430 | Ponderosa Pine | 10.5 | 80% | 70% | 40% | 4.7 | \$1,420.00 | | Preserve |
| 4431 | Ponderosa Pine | 11.5 | 80% | 70% | 70% | 8.1 | \$2,649.00 | | Preserve |
| 4436 | Ponderosa Pine | 7.5 | 80% | 70% | 70% | 5.3 | \$1,127.00 | | Preserve (Relocate) |
| 4439 | Ponderosa Pine | 9 | 80% | 70% | 75% | 6.8 | \$1,739.00 | | Preserve (Relocate) |
| 4443 | Ponderosa Pine | 5 | 80% | 70% | 55% | 2.8 | \$393.00 | | Preserve (Relocate) |
| 4446 | Ponderosa Pine | 18 | 80% | 70% | 50% | 9 | \$4,636.00 | Fill Against Trunk | Preserve |
| 4463 | Ponderosa Pine | 15 | 80% | 70% | 40% | 6 | \$2,576.00 | | Preserve |
| 4468 | Ponderosa Pine | 20 | 80% | 70% | 40% | 8 | \$4,579.00 | | Preserve |
| 4469 | Ponderosa Pine | 24 | 80% | 70% | 55% | 13.2 | \$9,066.00 | | Preserve |
| 4470 | Ponderosa Pine | 12 | 80% | 70% | 60% | 7.2 | \$2,473.00 | | Preserve (Relocate) |
| 4473 | Ponderosa Pine | 17.5 | 80% | 70% | 60% | 10.5 | \$5,259.00 | | Preserve |
| 4474 | Ponderosa Pine | 11.5 | 80% | 70% | 60% | 6.9 | \$2,271.00 | | Preserve (Relocate) |
| 4400A | Ponderosa Pine | 19.5 | 80% | 70% | 60% | 11.7 | \$6,529.00 | | Preserve |
| 4400B | Ponderosa Pine | 6 | 80% | 70% | 60% | 3.6 | \$618.00 | | Preserve |
| 4466A | Ponderosa Pine | 15 | 80% | 70% | 60% | 9.3 | \$4,125.00 | | Preserve |
| 4466B | Ponderosa Pine | 5 | 80% | 70% | 60% | 3 | \$429.00 | | Preserve |
| | | | | | | 208.2 | \$102,095.00 | | |



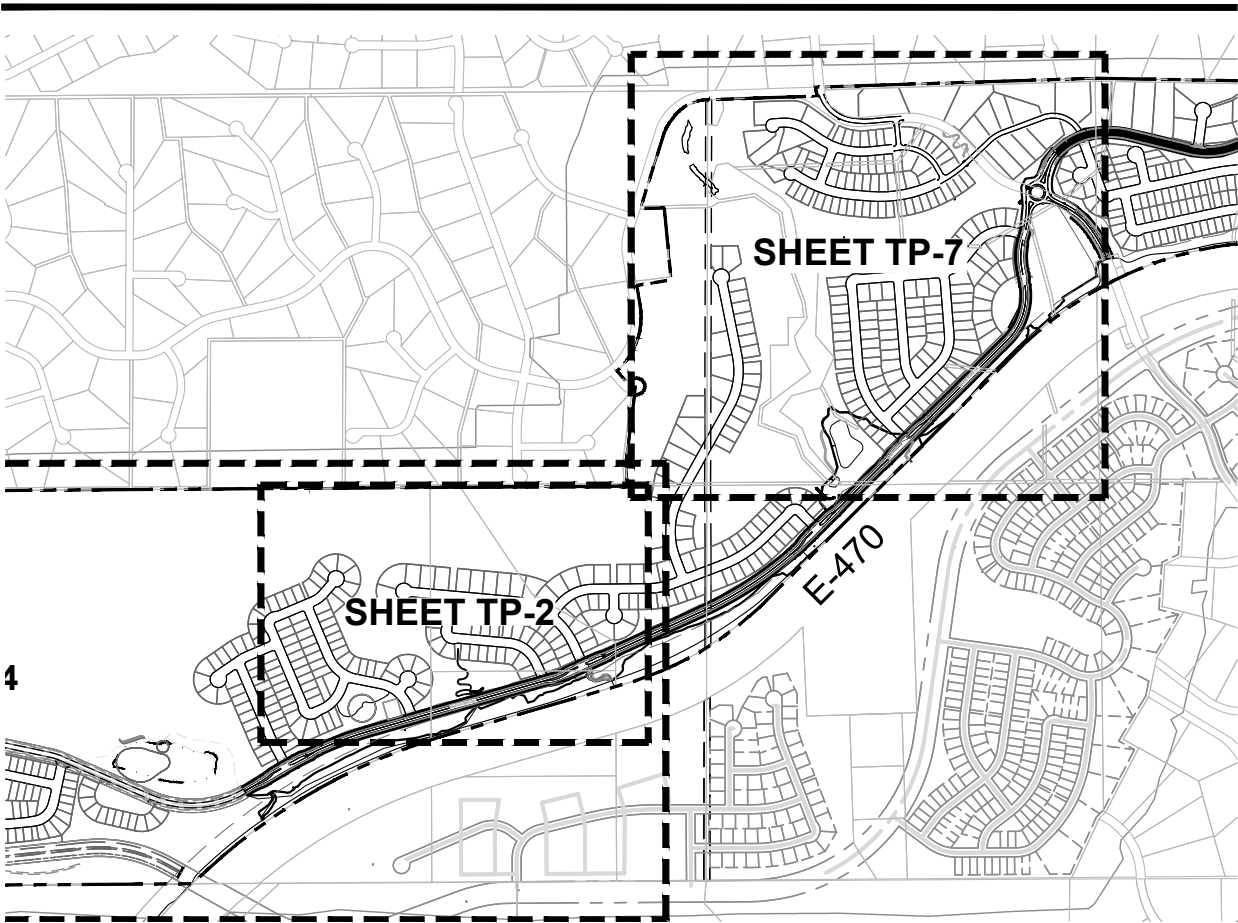
KINGS POINT NORTH
AURORA, COLORADO
TREE PROTECTION PLAN

FILING 1 TREE
MITIGATION/
PROTECTION DATA

TP.6



SHEET KEY MAP



KINGS POINT NORTH
AURORA, COLORADO
TREE PROTECTION PLAN

SHEET TITLE

FILING 2
TREE PROTECTION
PLAN

SHEET NUMBER

TP.7

SHEET 7 OF 12

NOVEMBER 30, 2022

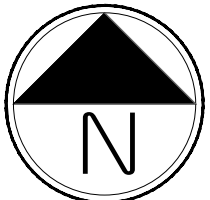
PROJECT NAME

FILING 2

| TREE PROTECTION SITE DATA | |
|-----------------------------|----------|
| BLACK FOREST TREES | QUANTITY |
| REMOVED TREES | 9 |
| PRESERVED TREES | 8 |
| PRESERVED TREES (RELOCATED) | 6 |
| TOTAL | 23 |

- *Note: 12 Non Black Forest Trees to be preserved
- (R) Relocated Tree Location
- (M) Mitigation Trees
- Tree Protection Fence
- * Dead/Gone Trees

*WALL NOTE: WALLS SHOWN ARE APPROXIMATE & DIAGRAMMATIC. FINAL DESIGN TO BE DETERMINED AT TIME OF CD'S. NUMBER OF WALLS, SIZE, AND LOCATION ARE SUBJECT TO CHANGE. CONDITION OF TREE WILL BE REEVALUATED PRIOR TO CONSTRUCTION TO DETERMINE VIABILITY OF TREE HAS NOT CHANGED.



Scale: 1"= 150'-0"

0 75 150 300

NON-BLACK FOREST TREE INVENTORY - FILING 2

| Tree # | Species | DBH | SPEC % | COND % 2021 | LOC. % | \$ VALUE 2021 | MITIGATION INCHES 2021 | Comments | Action |
|--|-------------------|---------------------|--------|----------------|--------|------------------|---------------------------|------------------|----------|
| Kings Point Tree Inventory Data—Filing 2 | | | | | | | | | |
| Trees Other Than Ponderosa Pine : | | | | | | | | | |
| 21 | Pinyon pine | 8 | 90 | 55 | 70 | \$693 | 9.8 | | Preserve |
| 22 | Pinyon pine | 7 | 90 | 40 | 70 | \$383 | 2.8 | | Preserve |
| 23 | Pinyon pine | 6,5 | 90 | 60 | 70 | \$756 | 3.6, 3 | | Preserve |
| 24 | Pinyon pine | 8 | 90 | 55 | 70 | \$693 | 4.4 | | Remove |
| 25 | Pinyon pine | 6,5 | 90 | 70 | 70 | \$882 | 4.2, 3.5 | | Remove |
| 26 | Pinyon pine | 5 | 90 | 80 | 70 | \$403 | 4 | | Remove |
| 27 | Pinyon pine | 5 | 90 | 40 | 70 | \$202 | 2 | | Remove |
| 28 | Pinyon pine | 6 | 90 | 75 | 70 | \$529 | 4.5 | | Remove |
| 29 | Pinyon pine | 5,4 | 90 | 80 | 70 | \$766 | 4, 3,2 | | Remove |
| 30a | Pinyon pine | 4 | 90 | 65 | 70 | \$622 | 2.6 | | Remove |
| 30b | Pinyon pine | 4 | | | | | 2.6 | | Remove |
| 30c | Pinyon pine | 3 | | | | | 2 | | Remove |
| 31a | Siberian elm | 18 | 70 | 45 | 70 | \$13,428 | 0 | 90% Dead | Remove |
| 31b | Siberian elm | 10 | | | | | 1 | | Remove |
| 31c | Siberian elm | 10 | | | | | 1 | | Remove |
| 31d | Siberian elm | 9 | | | | | 0.9 | | Remove |
| 31e | Siberian elm | 9 | | | | | 0.9 | | Remove |
| 31f | Siberian elm | 6 | | | | | 0.6 | | Remove |
| 32 | Pinyon pine | 7 | 90 | 55 | 70 | \$527 | 3.9 | | Remove |
| 33 | Pinyon pine | 6 | 90 | 55 | 70 | \$388 | 3.3 | | Remove |
| 34 | Pinyon pine | 7 | 90 | 70 | 70 | \$670 | 4.9 | | Remove |
| 35 | Pinyon pine | 8 | 90 | 55 | 70 | \$693 | 4.4 | | Remove |
| 36 | Pinyon pine | 8 | 90 | 70 | 70 | \$882 | 5.6 | | Remove |
| 37 | Pinyon pine | 6 | 90 | 90 | 70 | \$635 | 4.2 | | Remove |
| 38 | Pinyon pine | 8 | 90 | 55 | 70 | \$693 | 4.4 | | Remove |
| 39a | Pinyon pine | 6 | 90 | 45 | 70 | \$567 | 2.7 | | Remove |
| 39b | Pinyon pine | 4 | | | | | 18 | | Remove |
| 40 | Plains cottonwood | (decayed—collapsed) | | | | \$0 | | Dead | Remove |
| 41 | Plains cottonwood | (decayed—collapsed) | | | | \$0 | | Dead | Remove |
| 42 | Plains cottonwood | 8 | 85 | 10 | 70 | \$140 | 0.9 | Drought Stressed | Remove |
| 43 | Plains cottonwood | (decayed—collapsed) | | | | \$0 | | Dead | Remove |
| 44a | Plains cottonwood | 5 | 85 | 0 | 70 | \$0 | | Dead | Remove |
| 44b | Plains cottonwood | 3 | | | | | | Dead | Remove |
| 45 | Plains cottonwood | 8 | 85 | 30 | 70 | \$419 | 0.9 | Drought Stressed | Remove |
| 46 | Plains cottonwood | (decayed—collapsed) | | | | \$0 | | Dead | Remove |
| 47 | Plains cottonwood | 8 | 85 | 60 | 70 | \$839 | 1.8 | Drought Stressed | Remove |
| 48 | Plains cottonwood | 4 | 85 | 0 | 70 | \$0 | 0 | Dead | Remove |
| 49 | Plains cottonwood | 6 | 85 | 40 | 70 | \$313 | 1.4 | Drought Stressed | Remove |
| 50 | Plains cottonwood | (decayed—collapsed) | | | | \$0 | | Dead | Remove |
| 51 | Plains cottonwood | 8 | 85 | 40 | 70 | \$559 | 1.8 | Drought Stressed | Remove |
| 52 | Plains cottonwood | 33 | 85 | 60 | 70 | \$14,010 | 3.3 | | Remove |
| 53a | Plains cottonwood | 4 | 85 | 0 | 70 | \$0 | 0 | Dead | Remove |
| 53b | Plains cottonwood | 3 | | | | | Dead | Remove | |
| 54 | Plains cottonwood | 23 | 85 | 50 | 70 | \$5,803 | 2.3 | | Preserve |
| 55a | Plains cottonwood | 5 | 85 | 60 | 70 | \$638 | 1 | | Preserve |
| 55b | Plains cottonwood | 4 | | | | | | Preserve | |
| 57a | Plains cottonwood | 7 | 85 | 60 | 70 | \$2,970 | 0.2 | | Remove |
| 57b | Plains cottonwood | 7 | | | | | | | Remove |
| 57c | Plains cottonwood | 5 | | | | | | | Remove |
| 57d | Plains cottonwood | 5 | | | | | | | Remove |
| 58a | Plains cottonwood | 9 | 85 | 5 | 70 | \$317 | 0 | Dead | Remove |
| 58b | Plains cottonwood | 9 | | | | | Dead | Remove | |
| 58c | Plains cottonwood | 7 | | | | | Dead | Remove | |
| 59 | Plains cottonwood | 68 | 85 | 55 | 70 | \$31,930 | 6.8 | Hazard Tree | Remove |
| 60 | Plains cottonwood | 32 | 85 | 15 | 70 | \$3,305 | 3.2 | | Remove |
| (one of two original codominant trunks tore out—collapsed) | | | | | | | | | |
| 61 | Pinyon pine | 8 | 90 | 55 | 70 | \$693 | 3.6 | | Remove |
| 62 | Pinyon pine | 5 | 90 | 80 | 70 | \$403 | 3 | | Remove |
| 63 | Pinyon pine | 9 | 90 | 60 | 70 | \$968 | 3.6 | | Remove |
| 64a | Pinyon pine | 6 | 90 | 45 | 70 | \$896 | 2.1 | | Remove |
| 64b | Pinyon pine | 5 | | | | | 1.8 | | Remove |
| 64c | Pinyon pine | 4 | | | | | 1.8 | | Remove |
| 65 | Pinyon pine | 5 | 90 | 70 | 70 | \$353 | 3.5 | | Remove |
| 66 | Pinyon pine | 5 | 90 | 40 | 70 | \$202 | 2 | | Remove |
| 67 | Pinyon pine | 5 | 90 | 50 | 70 | \$252 | 2.5 | | Remove |
| 68 | Pinyon pine | 6 | 90 | 55 | 70 | \$388 | 3.5 | | Remove |
| 69 | Pinyon pine | 6 | 90 | 55 | 70 | \$388 | 35 | | Remove |
| 70 | Pinyon pine | 7 | 90 | 35 | 70 | \$335 | 2.4 | | Remove |
| 71 | Pinyon pine | 5 | 90 | 50 | 70 | \$252 | 2.5 | | Remove |
| 72 | Pinyon pine | 4 | 90 | 50 | 70 | \$164 | 2 | | Remove |
| 73 | Plains cottonwood | 19,17,13 | 85 | 75 | 70 | \$18,499 | 9.4 | 3 Stems | Remove |

td terracina
design
10200 E. Girard Ave, A-314
Denver, CO 80231
ph: 303.632.8867

KINGS POINT NORTH
AURORA, COLORADO
TREE PROTECTION PLAN

FILING 2
TREE INVENTORY
DATA

TP.8

NOVEMBER 30, 20

BLACK FOREST TREE INVENTORY - FILING 2

| BLACK FOREST - TREE PRESERVATION DATA - FILING 2 | | | | | | | | | |
|--|----------------|------|--------|--------|----------------|---------------------------|---------------|----------|----------|
| TREE # | SPECIES | DBH | SPEC % | LOC. % | COND % 2021 | MITIGATION INCHES 2021 | \$ VALUE 2021 | COMMENTS | ACTION |
| 4510 | Ponderosa Pine | 17 | 80% | 70% | 80% | 13.6 | \$6,616.00 | | Preserve |
| 4511 | Ponderosa Pine | 16 | 80% | 70% | 60% | 9.6 | \$4,396.00 | | Preserve |
| 4528 | Ponderosa Pine | 5 | 80% | 70% | 75% | 3.8 | \$537.00 | | Preserve |
| 4529 | Ponderosa Pine | 5.5 | 80% | 70% | 75% | 4.1 | \$649.00 | | Preserve |
| 4508A | Ponderosa Pine | 7.5 | 80% | 70% | 80% | 6 | \$1,288.00 | | Preserve |
| 4508B | Ponderosa Pine | 3 | 80% | 70% | 80% | 2.4 | \$206.00 | | Preserve |
| 4509A | Ponderosa Pine | 8.5 | 80% | 70% | 75% | 6.4 | \$1,551.00 | | Preserve |
| 4509B | Ponderosa Pine | 3.25 | 80% | 70% | 75% | 2.4 | \$227.00 | | Preserve |
| | | | | | | 48.275 | \$15,470.00 | | |

| BLACK FOREST - TREES TO RELOCATE - FILING 2 | | | | | | | | | |
|---|----------------|-----|--------|--------|----------------|---------------------------|---------------|----------|---------------------|
| TREE # | SPECIES | DBH | SPEC % | LOC. % | COND % 2021 | MITIGATION INCHES 2021 | \$ VALUE 2021 | COMMENTS | ACTION |
| 56 | Ponderosa Pine | 5 | 80% | 70% | 80% | 4 | \$572.00 | | Preserve (Relocate) |
| 4515 | Ponderosa Pine | 3 | 80% | 70% | 60% | 1.8 | \$155.00 | | Preserve (Relocate) |
| 4518 | Ponderosa Pine | 12 | 80% | 70% | 75% | 9 | \$3,091.00 | | Preserve (Relocate) |
| 4519 | Ponderosa Pine | 7.5 | 80% | 70% | 75% | 5.6 | \$1,207.00 | | Preserve (Relocate) |
| 4530 | Ponderosa Pine | 3 | 80% | 70% | 75% | 2.3 | \$193.00 | | Preserve (Relocate) |
| A1 | Ponderosa Pine | 4 | 80% | 70% | 75% | 3 | \$343.00 | | Preserve (Relocate) |
| | | | | | | 25.65 | \$5,561.00 | | |

| BLACK FOREST - TREES TO REMOVE - FILING 2 | | | | | | | | | |
|---|----------------|------|--------|--------|----------------|---------------------------|---------------|----------|--------|
| TREE # | SPECIES | DBH | SPEC % | LOC. % | COND % 2021 | MITIGATION INCHES 2021 | \$ VALUE 2021 | COMMENTS | ACTION |
| 4512 | Ponderosa Pine | 23 | 80% | 70% | 60% | 13.8 | \$9,083.00 | | Remove |
| 4514 | Ponderosa Pine | 15 | 80% | 70% | 70% | 17.5 | \$12,520.00 | | Remove |
| 4516 | Ponderosa Pine | 26 | 80% | 70% | 50% | 13 | \$9,673.00 | | Remove |
| 4517 | Ponderosa Pine | 23 | 80% | 70% | 55% | 12.7 | \$8,326.00 | | Remove |
| 4520 | Ponderosa Pine | 18.5 | 80% | 70% | 60% | 11.1 | \$5,877.00 | | Remove |
| 4521 | Ponderosa Pine | 17 | 80% | 70% | 60% | 10.2 | \$4,962.00 | | Remove |
| 4522 | Ponderosa Pine | 26.5 | 80% | 70% | 70% | 18.6 | \$14,068.00 | | Remove |
| 4523A | Ponderosa Pine | 15 | 80% | 70% | 70% | 10.5 | \$4,507.00 | | Remove |
| 4523B | Ponderosa Pine | 7.5 | 80% | 70% | 70% | 5.3 | \$1,127.00 | | Remove |
| | | | | | | 112.7 | \$70,143.00 | | |

BLACK FOREST ESCROW TREES - FILING 2

| BLACK FOREST - TREE PRESERVATION DATA - FILING 2 | | | | | | | | | |
|--|----------------|------|--------|--------|----------------|---------------------------|---------------|----------|---------------------|
| TREE # | SPECIES | DBH | SPEC % | LOC. % | COND % 2021 | MITIGATION INCHES 2021 | \$ VALUE 2021 | COMMENTS | ACTION |
| 56 | Ponderosa Pine | 5 | 80% | 70% | 80% | 4 | \$572.00 | | Preserve (Relocate) |
| 4510 | Ponderosa Pine | 17 | 80% | 70% | 80% | 13.6 | \$6,616.00 | | Preserve |
| 4511 | Ponderosa Pine | 16 | 80% | 70% | 60% | 9.6 | \$4,396.00 | | Preserve |
| 4528 | Ponderosa Pine | 5 | 80% | 70% | 75% | 3.8 | \$537.00 | | Preserve |
| 4529 | Ponderosa Pine | 5.5 | 80% | 70% | 75% | 4.1 | \$649.00 | | Preserve |
| 4508A | Ponderosa Pine | 7.5 | 80% | 70% | 80% | 6 | \$1,288.00 | | Preserve |
| 4508B | Ponderosa Pine | 3 | 80% | 70% | 80% | 2.4 | \$206.00 | | Preserve |
| 4509A | Ponderosa Pine | 8.5 | 80% | 70% | 75% | 6.4 | \$1,551.00 | | Preserve |
| 4509B | Ponderosa Pine | 3.25 | 80% | 70% | 75% | 2.4 | \$227.00 | | Preserve |
| 4515 | Ponderosa Pine | 3 | 80% | 70% | 60% | 1.8 | \$155.00 | | Preserve (Relocate) |
| 4518 | Ponderosa Pine | 12 | 80% | 70% | 75% | 9 | \$3,091.00 | | Preserve (Relocate) |
| 4519 | Ponderosa Pine | 7.5 | 80% | 70% | 75% | 5.6 | \$1,207.00 | | Preserve (Relocate) |
| 4530 | Ponderosa Pine | 3 | 80% | 70% | 75% | 2.3 | \$193.00 | | Preserve (Relocate) |
| A1 | Ponderosa Pine | 4 | 80% | 70% | 75% | 3 | \$343.00 | | Preserve (Relocate) |
| | | | | | | 73.9 | \$21,031.00 | | |

BLACK FOREST TREE MITIGATION SUMMARY - FILING 2

| | PRESERVED TREES | RELOCATED TREES | ESCROW TREES | REMOVED AND REQ. MITIGATED TREES | MITIGATION TREES PROVIDED | | |
|-------------|-----------------|-----------------|--------------|----------------------------------|---------------------------|-----|--------|
| TOTAL TREES | TREES RELOCATED | | | | HEIGHT | QTY | INCHES |
| 23 | 8 | 6 | 14 | 9 | 6' HT. PONDEROSA PINES | 38 | 114" |
| | 35% | 26% | \$ 21,031 | 39% | | | |
| | | | | MITIGATION INCHES 112.7" | | | |

- NOTE:
1. REPLACEMENT TREES ARE TO BE MINIMUM 6' TALL PONDEROSA PINES ON THE MITIGATION RATIO OF 1" DBH=2' HEIGHT.
 2. TOTAL TREES ABOVE EXCLUDES DEAD OR MISSING TREES.
 3. ESCROW TREES INCLUDE PRESERVED TREES WITHIN LIMIT OF CONSTRUCTION (LOC) AND RELOCATED TREES.
 4. ALL TREES ARE WITHIN LIMIT OF CONSTRUCTION.



PROJECT NAME

KINGS POINT NORTH
AURORA, COLORADO
TREE PROTECTION PLAN

SHEET TITLE

FILING 2 TREE
MITIGATION/
PROTECTION
CHARTS

SHEET NUMBER

TP.9

SHEET 9 OF 12

NOVEMBER 30, 2022

NON-BLACK FOREST TREE MITIGATION SUMMARY - FILING 2

| Tree No. (Tag No.) | Species (common name) | Size (in.) | Unit Tree Cost | Condition Category | Species Factor (%) | Condition Factor (%) | Location Factor (%) | Appraised Value | Mitigation Inches 2018 | Comments | Action |
|--|--------------------------|------------------------|----------------|-----------------------|-----------------------|-------------------------|------------------------|--------------------|---------------------------|-------------------------|----------|
| Kings Point Tree Inventory Data—Filing 2 | | | | | | | | | | | |
| Trees Other Than Ponderosa Pine : | | | | | | | | | | | |
| 21 | Pinyon pine | 8 | \$2,000 | Fair | 90 | 55 | 70 | \$693 | 9.8 | | Preserve |
| 22 | Pinyon pine | 7 | \$1,520 | Poor | 90 | 40 | 70 | \$383 | 2.8 | | Preserve |
| 23 | Pinyon pine | 6.5 | \$2,000 | Fair | 90 | 60 | 70 | \$756 | 3.6, 3 | | Preserve |
| 24 | Pinyon pine | 8 | \$2,000 | Fair | 90 | 55 | 70 | \$693 | 4.4 | | Remove |
| 25 | Pinyon pine | 6.5 | \$2,000 | Fair | 90 | 70 | 70 | \$882 | 4.2, 3.5 | | Remove |
| 26 | Pinyon pine | 5 | \$800 | Good | 90 | 80 | 70 | \$403 | 4 | | Remove |
| 27 | Pinyon pine | 5 | \$800 | Poor | 90 | 40 | 70 | \$202 | 2 | | Remove |
| 28 | Pinyon pine | 6 | \$1,120 | Fair | 90 | 75 | 70 | \$529 | 4.5 | | Remove |
| 29 | Pinyon pine | 5.4 | \$1,520 | Good | 90 | 80 | 70 | \$766 | 4, 3.2 | | Remove |
| 30a | Pinyon pine | 4 | \$1,520 | Fair | 90 | 65 | 70 | \$622 | 2.6 | | Remove |
| 30b | Pinyon pine | 4 | | | | | | | 2.6 | | Remove |
| 30c | Pinyon pine | 3 | | | | | | | 2 | | Remove |
| 31a | Siberian elm | 18 | | | | | | | 0 | 90% Dead | Remove |
| 31b | Siberian elm | 10 | \$60,897 | Poor | 70 | 45 | 70 | \$13,428 | 1 | | Remove |
| 31c | Siberian elm | 10 | | | | | | | 0.9 | | Remove |
| 31d | Siberian elm | 9 | | | | | | | 0.9 | | Remove |
| 31e | Siberian elm | 9 | | | | | | | 0.6 | | Remove |
| 31f | Siberian elm | 6 | | | | | | | | | |
| 32 | Pinyon pine | 7 | | | | | | | \$1,520 | Fair | 90 |
| 33 | Pinyon pine | 6 | \$1,120 | Fair | 90 | 55 | 70 | \$388 | 3.3 | | Remove |
| 34 | Pinyon pine | 7 | \$1,520 | Fair | 90 | 70 | 70 | \$670 | 4.9 | | Remove |
| 35 | Pinyon pine | 8 | \$2,000 | Fair | 90 | 55 | 70 | \$693 | 4.4 | | Remove |
| 36 | Pinyon pine | 8 | \$2,000 | Fair | 90 | 70 | 70 | \$882 | 5.6 | | Remove |
| 37 | Pinyon pine | 6 | \$1,120 | Good | 90 | 90 | 70 | \$635 | 4.2 | | Remove |
| 38 | Pinyon pine | 8 | \$2,000 | Fair | 90 | 55 | 70 | \$693 | 4.4 | | Remove |
| 39a | Pinyon pine | 6 | \$2,000 | Poor | 90 | 45 | 70 | \$567 | 2.7 | | Remove |
| 39b | Pinyon pine | 4 | | | | | | | 18 | | Remove |
| 40 | Plains cottonwood | | | (decayed—collapsed) | | | | \$0 | | Dead | Remove |
| 41 | Plains cottonwood | | | (decayed—collapsed) | | | | \$0 | | Dead | Remove |
| 42 | Plains cottonwood | 8 | \$2,350 | Dying | 85 | 10 | 70 | \$140 | 0.9 | Drought Stressed | Remove |
| 43 | Plains cottonwood | | | (decayed—collapsed) | | | | \$0 | | Dead | Remove |
| 44a | Plains cottonwood | 5 | N/A | Dead | 85 | 0 | 70 | \$0 | | Dead | Remove |
| 44b | Plains cottonwood | 3 | | | | | | | | Dead | Remove |
| 45 | Plains cottonwood | 8 | \$2,350 | Poor | 85 | 30 | 70 | \$419 | 0.9 | Drought Stressed | Remove |
| 46 | Plains cottonwood | | | (decayed—collapsed) | | | | \$0 | | Dead | Remove |
| 47 | Plains cottonwood | 8 | \$2,350 | Fair | 85 | 60 | 70 | \$839 | 1.8 | Drought Stressed | Remove |
| 48 | Plains cottonwood | 4 | N/A | Dead | 85 | 0 | 70 | \$0 | 0 | Dead | Remove |
| 49 | Plains cottonwood | 6 | \$1,316 | Poor | 85 | 40 | 70 | \$313 | 1.4 | Drought Stressed | Remove |
| 50 | Plains cottonwood | | | (decayed—collapsed) | | | | \$0 | | Dead | Remove |
| 51 | Plains cottonwood | 8 | \$2,350 | Poor | 85 | 40 | 70 | \$559 | 1.8 | Drought Stressed | Remove |
| 52 | Plains cottonwood | 33 | \$39,245 | Fair | 85 | 60 | 70 | \$14,010 | 3.3 | | Remove |
| 53a | Plains cottonwood | 4 | N/A | Dead | 85 | 0 | 70 | \$0 | 0 | Dead | Remove |
| 53b | Plains cottonwood | 3 | | | | | | | | Dead | Remove |
| 54 | Plains cottonwood | 23 | \$19,505 | Poor | 85 | 50 | 70 | \$5,803 | 2.3 | | Preserve |
| 55a | Plains cottonwood | 5 | \$1,786 | Fair | 85 | 60 | 70 | \$638 | 1 | | Preserve |
| 55b | Plains cottonwood | 4 | | | | | | | | | Preserve |
| 57a | Plains cottonwood | 7 | | | | | | | | | Remove |
| 57b | Plains cottonwood | 7 | \$8,319 | Fair | 85 | 60 | 70 | \$2,970 | 0.2 | | Remove |
| 57c | Plains cottonwood | 5 | | | | | | | | | Remove |
| 57d | Plains cottonwood | 5 | | | | | | | | | Remove |
| 58a | Plains cottonwood | 9 | | | | | | | | | Remove |
| 58b | Plains cottonwood | 9 | \$10,669 | Dying | 85 | 5 | 70 | \$317 | 0 | Dead | Remove |
| 58c | Plains cottonwood | 7 | | | | | | | | Dead | Remove |
| 59 | Plains cottonwood | 68 | \$97,572 | Fair | 85 | 55 | 70 | \$31,930 | 6.8 | Hazard Tree | Remove |
| 60 | Plains cottonwood | 32 | \$37,036 | Dying | 85 | 15 | 70 | \$3,305 | 3.2 | | Remove |
| (one of two original codominant trunks tore out—collapsed) | | | | | | | | | | | |
| 61 | Pinyon pine | 8 | \$2,000 | Fair | 90 | 55 | 70 | \$693 | 3.6 | | Remove |
| 62 | Pinyon pine | 5 | \$800 | Good | 90 | 80 | 70 | \$403 | 3 | | Remove |
| 63 | Pinyon pine | 9 | \$2,560 | Fair | 90 | 60 | 70 | \$968 | 3.6 | | Remove |
| 64a | Pinyon pine | 6 | \$3,160 | Poor | 90 | 45 | 70 | \$896 | 2.1 | | Remove |
| 64b | Pinyon pine | 5 | | | | | | | 1.8 | | Remove |
| 64c | Pinyon pine | 4 | | | | | | | 1.8 | | Remove |
| 65 | Pinyon pine | 5 | \$800 | Fair | 90 | 70 | 70 | \$353 | 3.5 | | Remove |
| 66 | Pinyon pine | 5 | \$800 | Poor | 90 | 40 | 70 | \$202 | 2 | | Remove |
| 67 | Pinyon pine | 5 | \$800 | Poor | 90 | 50 | 70 | \$252 | 2.5 | | Remove |
| 68 | Pinyon pine | 6 | \$1,120 | Fair | 90 | 55 | 70 | \$388 | 3.5 | | Remove |
| 69 | Pinyon pine | 6 | \$1,120 | Fair | 90 | 55 | 70 | \$388 | 35 | | Remove |
| 70 | Pinyon pine | 7 | \$1,520 | Poor | 90 | 35 | 70 | \$335 | 2.4 | | Remove |
| 71 | Pinyon pine | 5 | \$800 | Poor | 90 | 50 | 70 | \$252 | 2.5 | | Remove |
| 72 | Pinyon pine | 4 | \$520 | Poor | 90 | 50 | 70 | \$164 | 2 | | Remove |
| 73 | Plains cottonwood | 19,17,13 | \$41,454 | Fair | 85 | 75 | 70 | \$18,499 | 9.4 | 3 Stems | Remove |
| 74 | Plains cottonwood | (21,20,22,15,13,16,10) | \$98,700 | Fair | 85 | 75 | 70 | \$44,045 | 47.6 | 7 Stems | Remove |
| 75 | Pinyon pine | 6 | \$1,120 | Poor | 90 | 50 | 70 | \$353 | 3 | | Remove |
| 76 | Siberian elm | 10,13,8,5 | \$23,956 | Poor | 70 | 40 | 70 | \$4,695 | 3.6 | 4 Stems | Remove |
| (completely missing) | | | | | | | | | | | |
| 78 | Pinyon pine | 5 | \$800 | Good | 90 | 80 | 70 | \$403 | 3.5 | | Remove |
| 79 | Pinyon pine | 5 | \$800 | Good | 90 | 80 | 70 | \$403 | 3.5 | | Remove |
| 80 | Pinyon pine | 6 | \$1,120 | Fair | 90 | 70 | 70 | \$494 | 4.2 | | Remove |
| 81 | Pinyon pine | 5 | \$800 | Fair | 90 | 70 | 70 | \$353 | 3.5 | | Remove |
| 82 | Pinyon pine | 6 | \$1,120 | Fair | 90 | 70 | 70 | \$494 | 4.2 | | Remove |
| 83 | American plum | 9 | \$971 | | 80 | N/A | 70 | | 5.4 | 2 Stems, Poor condition | Remove |
| 92 | Pinyon pine | 7 | \$753 | | 65 | N/A | 70 | | 5.6 | good condition | Remove |
| 93 | Pinyon pine | 5 | \$485 | | 65 | N/A | 70 | | 4 | good condition | Remove |
| 96 | Pinyon pine | 14 | \$1,794 | | 65 | N/A | 70 | | 8.4 | fair condition | Remove |
| AAA | Pinyon pine | 6.5 | \$2,000 | Poor | 90 | 30 | 70 | \$378 | 1.8, 1.5 | | Remove |
| A | Chokecherry | 4 | \$11,466 | Fair | 85 | 70 | 70 | \$4,776 | | | Remove |
| (clump—14 trees >4") | | | | | | | | | | | |
| B | Black willow | 4 | \$2,028 | Fair | 75 | 55 | 70 | \$586 | | | Remove |
| (clump—3 trees >4") | | | | | | | | | | | |
| H | Plains cottonwood | 12 | \$5,311 | Fair | 85 | 70 | 70 | \$2,212 | 50.1 | 11 Stems | Remove |

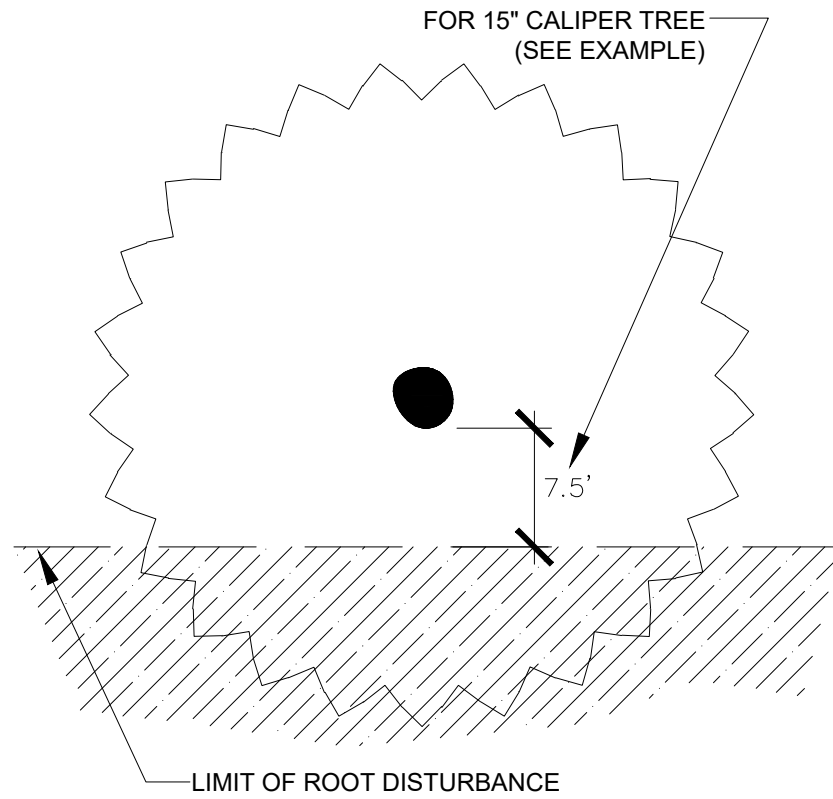
| | | | | | | | | | | | |
|-----------------------------|-------------------|---------------------|-----------|----------------------------|----|----|----|----------|---------------|-----------------------|----------|
| | | | | (clump—7 trees @ 12" avg.) | | | | | | | |
| J | Plains cottonwood | 21 | \$16,262 | Fair | 85 | 70 | 70 | \$6,773 | 12.6 | | |
| J | Plains cottonwood | 16,11,8 | \$23,077 | Fair | 85 | 70 | 70 | \$9,612 | 2.4, 3.9, 4.8 | Included Bark | Preserve |
| K | Plains cottonwood | 17,15 | \$21,244 | Fair | 85 | 65 | 70 | \$8,216 | 5.4, 4.5 | Included Bark | Preserve |
| L | Black willow | (8,8,6,8,9,6,5,7,8) | \$52,936 | Poor | 75 | 30 | 70 | \$8,337 | 8.1 | 9 Stems | Remove |
| M | Plains cottonwood | (13,14,13,22) | \$57,951 | Fair | 85 | 75 | 70 | \$25,861 | 4.8 | Severe Diaback | Remove |
| N | Plains cottonwood | 12 | \$74,352 | Fair | 85 | 65 | 70 | \$28,756 | 20.4 | Included Bark | Remove |
| (clump—14 trees @ 12" avg.) | | | | | | | | | | | |
| O | American plum | 4 | \$13,039 | Poor | 85 | 50 | 70 | \$3,879 | 4.5 | 5 Stems, severe decay | Remove |
| (clump—17 trees >4") | | | | | | | | | | | |
| P | Plains cottonwood | 10 | \$11,139 | Fair | 85 | 65 | 70 | \$4,308 | 9 | 5 Stems | Remove |
| (clump—3 trees @ 10" avg.) | | | | | | | | | | | |
| Q | Plains cottonwood | 25 | \$23,077 | Fair | 85 | 60 | 70 | \$8,238 | 15 | good condition | Remove |
| R | Chokecherry/Bl. | 5 | \$10,260 | Fair | 80 | 60 | 70 | \$3,447 | 5.4 | 3 Stems | Remove |
| (clump—9 trees >5") | | | | | | | | | | | |
| S | Chokecherry/Bl. | 4 | \$5,928 | Fair | 80 | 60 | 70 | \$1,992 | 16 | 8 Stems | Remove |
| (clump—8 trees >4") | | | | | | | | | | | |
| Z | Plains cottonwood | 11 | \$111,625 | Fair | 85 | 65 | 70 | \$43,171 | 135 | Drought Stressed | Remove |
| (clump—25 trees @ 11" avg.) | | | | | | | | | | | |
| AA | Chokecherry | 4 | \$4,914 | Fair | 85 | 75 | 70 | \$2,193 | 6.4 | 4 Stems | Remove |
| (clump—6 trees >4") | | | | | | | | | | | |
| BB | Plains cottonwood | 13 | \$43,757 | Fair | 85 | 70 | 70 | \$18,225 | 176.4 | 49 Stems, fair cond. | Remove |
| (clump—7 trees @ 13" avg.) | | | | | | | | | | | |
| CC | Black willow | 8 | \$2,600 | Poor | 75 | 30 | 70 | \$410 | 4 | 4 Stems, poor cond. | Remove |
| DD | Chokecherry | 4 | \$819 | Good | 85 | 80 | 70 | \$390 | 2.4 | | Remove |
| EE | Chokecherry | 6 | \$1,764 | Fair | 85 | 70 | 70 | \$735 | 3.6 | | Remove |
| FF | Black willow | 6 | \$1,456 | Fair | 75 | 60 | 70 | \$459 | 4 | 4 Stems | Remove |
| GG | Plains cottonwood | 7 | \$12,502 | Fair | 85 | 60 | 70 | \$4,463 | 16.2 | 9 Stems, poor cond. | Remove |
| (clump—7 trees @ 7" avg.) | | | | | | | | | | | |
| HH | Plains cottonwood | 14 | \$36,190 | Fair | 85 | 60 | 70 | \$12,920 | 109.2 | 14 stems, good cond. | Remove |

TREE PROTECTION NOTES

1. PRIOR TO THE BEGINNING OF CONSTRUCTION, ESTABLISH THE TREE PROTECTION ZONE BY INSTALLING TREE PROTECTION FENCING AROUND ALL EXISTING TREES TO REMAIN. LOCATE FENCING AT THE OUTSIDE OF THE DRIP LINE OF THE TREES OR AT A DISTANCE FROM THE TREE TRUNK OF ONE(1) FOOT OF RADIUS FOR EVERY INCH OF TRUNK DIAMETER, WHICHEVER IS GREATER. FOR GROUPS OF TREES, THE MINIMUM DISTANCE BETWEEN THE TREE TRUNK AND THE FENCING SHALL BE ONE(1) FOOT FOR EACH INCH OF TRUNK DIAMETER. FOLLOWING INSTALLATION OF FENCING, REQUEST INSPECTION BY THE CITY OF AURORA PARKS & FORESTRY DIVISION (303-739-7177) OR AUTHORIZED DESIGNEE.
2. TREE PROTECTION FENCING SHALL BE 4' HEIGHT, ORANGE MESH FENCING ATTACHED TO T POSTS. FENCING SHALL BE INSPECTED AND MAINTAINED DAILY.
3. CONTRACTORS SHALL BE RESPONSIBLE FOR ALL OF THEIR WORKERS, SUBCONTRACTORS AND SUPPLIERS UNDER THIS REQUIREMENT. WITHIN THE TREE PROTECTION ZONE, THE FOLLOWING CONSTRUCTION ACTIVITIES SHALL NOT BE ALLOWED EXCEPT AS NECESSARY TO EXECUTE DETAILS TP-2.0, 2, 1, 3.1 & 3.2:
 - A. EQUIPMENT USE AND STORAGE
 - B. MATERIAL DELIVERY OR STORAGE
 - C. VEHICLE TRAFFIC, PARKING, USE OR STORAGE
 - D. SPREADING, EXCAVATING, COMPACTING OR STOCKPILING OF SOIL
 - E. CONCRETE WASH-OUT AREAS AND RUN-OFF FROM CONCRETE WASH-OUT AREAS
 - F. FOOT TRAFFIC
 - G. RUN-OFF CONTAINING HARMFUL LIQUIDS SUCH AS OIL, GAS, PAINT, SOLVENTS, FERTILIZER, ASPHALT, MORTAR, TAR OR SIMILAR MATERIALS
4. VIOLATION OF THE TREE PROTECTION ZONE SHALL RESULT IN A FINE OF \$500 PER INCIDENT AND MAY BE INCREASED BASED ON THE PERCENTAGE OF THE ZONE AFFECTED MULTIPLIED BY THE FULL VALUE OF THE TREE (OR TREES) ESTABLISHED PRIOR TO CONSTRUCTION. IF MORE THAN 30% OF THE TREE PROTECTION ZONE IS DAMAGED, THE FINE SHALL BE THE FULL VALUE OF THE ADJACENT TREE (OR TREES). FOR THE PURPOSE OF THESE REQUIREMENTS, CONSTRUCTION FENCING (LOCATED AT THE LIMITS OF CONSTRUCTION) SHALL BE TREATED AS TREE PROTECTION FENCING AND SHALL ESTABLISH A TREE PROTECTION ZONE FOR NEARBY TREES.
5. DAMAGE TO THE MAIN TRUNKS OF TREES IS PROHIBITED. DAMAGE NOT PREVIOUSLY DOCUMENTED SHALL RESULT IN A FINE BASED ON THE PERCENTAGE OF THE CIRCUMFERENCE AFFECTED. DAMAGE GREATER THAN 30% OF THE CIRCUMFERENCE OR AFFECTING THE STRUCTURAL INTEGRITY OF THE TREE WILL RESULT IN A FINE EQUAL TO THE FULL VALUE OF THE TREE.
6. LIMB REMOVAL IS PROHIBITED, UNLESS APPROVED PRIOR TO CONSTRUCTION OR AS AUTHORIZED BY THE CITY OF AURORA PARKS & FORESTRY DIVISION. LIMB REMOVAL, IF APPROVED, SHALL BE DONE PRIOR TO THE START OF CONSTRUCTION. DAMAGED BRANCHES SHALL BE PRUNED WITHIN 10 DAYS OF THE OCCURRENCE UTILIZING ANSI A300 STANDARDS. UNAUTHORIZED LIMB DAMAGE OR REMOVAL CAN RESULT IN A FINE OF \$500 PER BRANCH AS MAY BE DETERMINED BY THE CONSTRUCTION MANAGER OR HIS FORESTRY CONSULTANT. LIMB REMOVAL AND ALL OTHER APPROVED PRUNING SHALL BE PERFORMED BY A PROFESSIONAL COMPANY THAT IS LICENSED BY THE CITY OF AURORA FORESTRY DIVISION.
7. IF ROOTS GREATER THAN ONE(1) INCH DIAMETER REQUIRE CUTTING/REMOVAL, A CLEAN CUT SHALL BE ACCOMPLISHED USING A SHARP HAND TOOL. A MAXIMUM OF TWO(2) 3-INCH DIAMETER ROOTS PER TREE ARE PERMITTED FOR REMOVAL. THE REMOVAL OF ADDITIONAL ROOTS 3-INCHES OR GREATER IN DIAMETER REQUIRES APPROVAL OF THE CITY FORESTER OR AUTHORIZED DESIGNEE.
8. EXISTING TREES DAMAGED BY CONSTRUCTION ACTIVITIES SHALL BE IMMEDIATELY REPAIRED AND IF DAMAGED BEYOND REPAIR, REPLACED PER THE MITIGATION SPECIFICATIONS OUTLINED IN SECTION IV, SUBSECTION A, ITEM 3 OF THE TREE PRESERVATION POLICY. THE MITIGATION PLAN FOR THESE TREES SHALL FOLLOW THAT APPROVED THROUGH THE SITE PLAN SUBMITTAL.

CITY OF AURORA STANDARD DETAIL

TREE PROTECTION - ONE SIDE



CITY OF AURORA STANDARD DETAIL

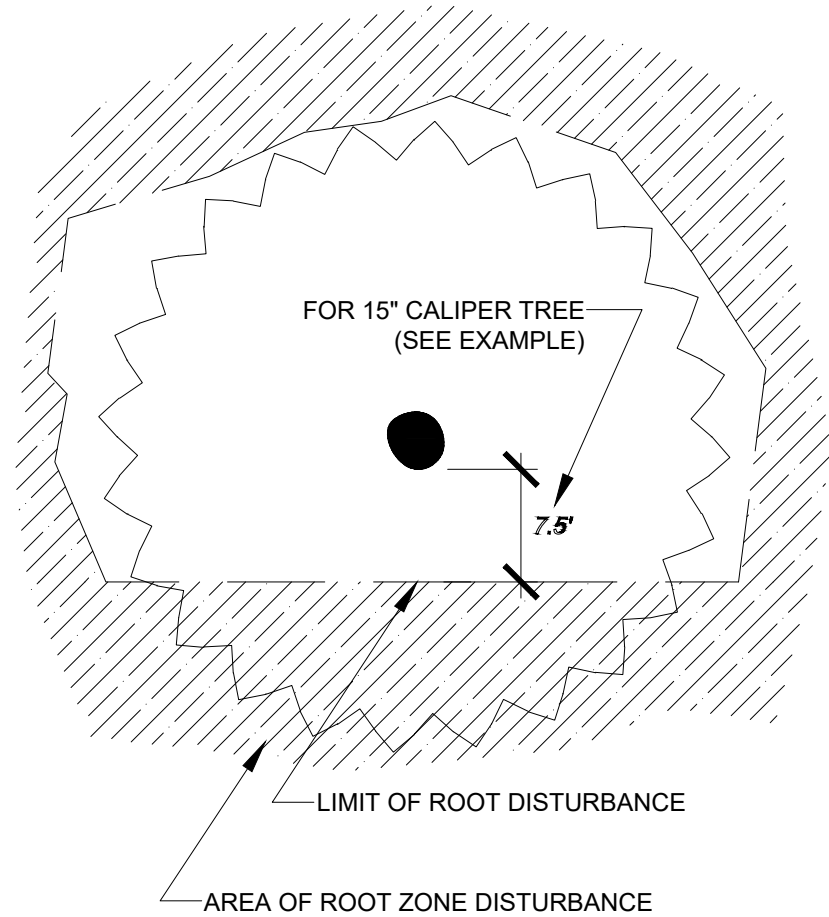
FORMULA FOR LIMIT OF DISTURBANCE:

ROOT ZONE DISTURBANCE SHALL NOT BE ALLOWED CLOSE TO THE TRUNK OF ANY TREE TO BE PRESERVED. MINIMUM DISTANCE BETWEEN THE TRUNK AND THE DISTURBANCE SHALL BE EQUAL TO 1/2 OF THE TREES DIAMETER CONVERTED TO FEET. (FOR EXAMPLE, FOR A TREE WITH A 15" DIAMETER TRUNK, THE DISTURBANCE CANNOT BE CLOSER THAN 7.5 FEET FROM THE TRUNK.

REQUIRED TREATMENTS:

1. APPLY PREVENTATIVE SPRAY FOR MOUNTAIN PINE BEETLE (MPB) AND IPS TO PONDEROSA, AUSTRIAN & SCOTCH PINES. TREAT ALL BARK SURFACES, INCLUDING TOP BRANCHES.
2. IF DISTURBANCE LEAVES A CUT SLOPE, IMMEDIATELY APPLY MULCH AND WATER. IF DISTURBANCE IS A TRENCH, IMMEDIATELY BACKFILL AND WATER.
3. ONCE PER MONTH, EVALUATE TREE TO DETERMINE IF TREE IS LEANING OR IF BRANCHES/ LEAVES ARE AFFECTED BY ROOT LOSS.
4. DO NOT FERTILIZE.
5. INSPECT TREE 2-3 TIMES PER YEAR FOR WATER NEEDS AND MONITOR FOR INSECTS.
6. PROVIDE SUPPLEMENTAL WATERING DURING 1-3 WINTERS.

TREE PROTECTION - MORE THAN ONE SIDE



CITY OF AURORA STANDARD DETAIL

LIMITATIONS OF ROOT ZONE DISTURBANCE:

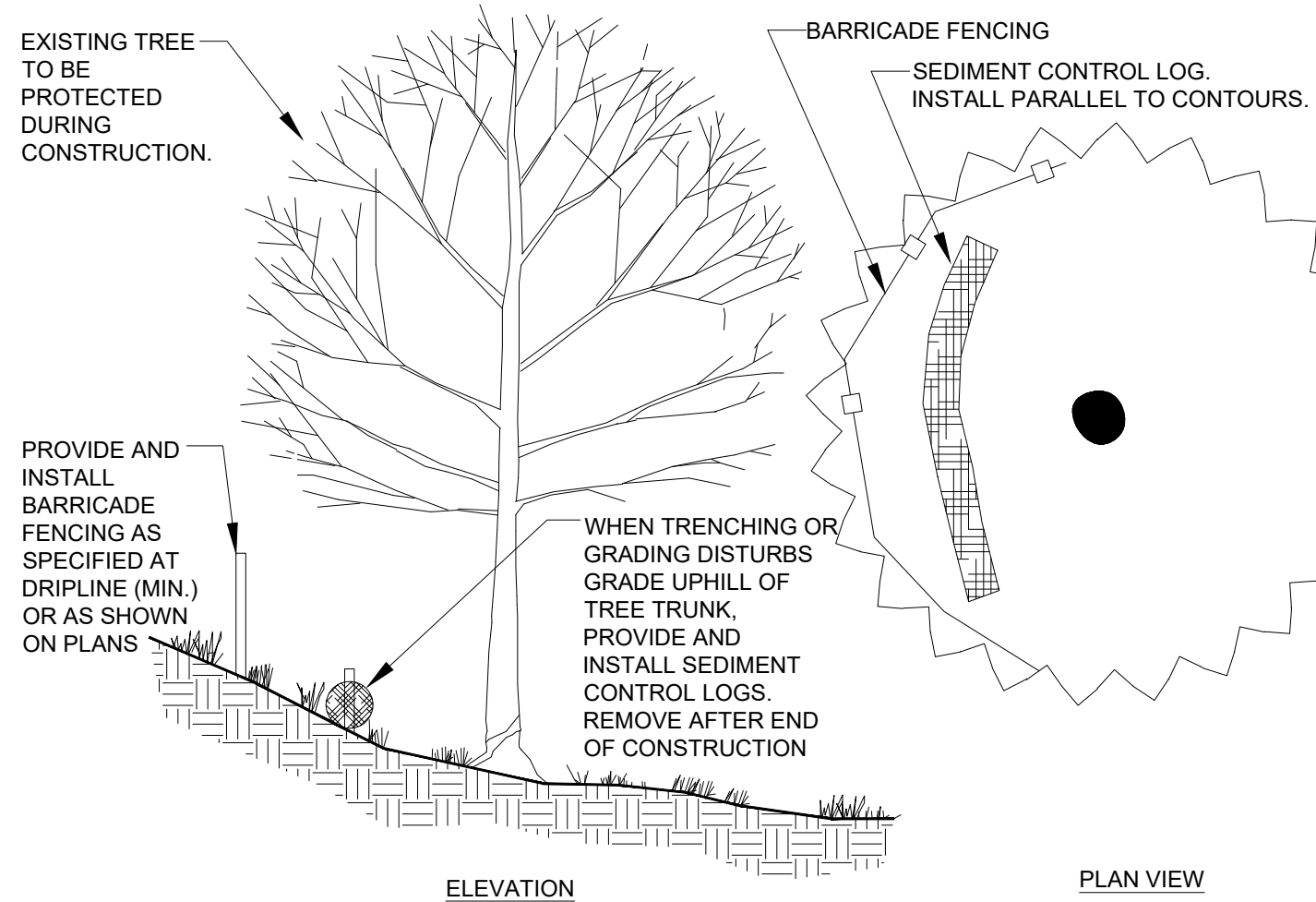
ROOT ZONE DISTURBANCE WITHIN THE DRIP LINE SHALL BE LIMITED TO ONE SIDE OF THE TRUNK OF TREES TO BE PRESERVED. MINIMUM DISTANCE BETWEEN THE TRUNK AND THE DISTURBANCE SHALL BE EQUAL TO 1/2 OF THE TREES DIAMETER CONVERTED TO FEET. (FOR EXAMPLE, FOR A TREE WITH A 1 1/2" DIAMETER TRUNK, THE DISTURBANCE CANNOT BE CLOSER THAN 7.5 FEET FROM THE TRUNK.

REQUIRED TREATMENTS:

1. APPLY PREVENTATIVE SPRAY FOR MOUNTAIN PINE BEETLE (MPB) AND IPS TO PONDEROSA, AUSTRIAN AND SCOTCH PINES. TREAT ALL BARK SURFACES, INCLUDING TOP BRANCHES.
2. IF DISTURBANCE LEAVES A CUT SLOPE WITHIN THE DRIFLINE, IMMEDIATELY APPLY MULCH AND WATER.
3. APPLY 3"-5" OF ORGANIC MULCH OVER THE AREA WITHIN THE DRIFLINE.
4. EVERY 1-2 WEEKS, APPLY 50-100 GALLONS OF SUPPLEMENTAL WATER.
5. PROVIDE SUPPLEMENTAL WATER DURING 1-3 WINTERS.
6. REGULARLY EVALUATE TREE TO DETERMINE IF TREE IS LEANING OR IF BRANCHES/LEAVES ARE AFFECTED BY ROOT LOSS.
7. INSPECT TREE 2-3 TIMES PER YEAR FOR WATER NEEDS AND MONITOR FOR INSECTS.
8. INSTALL STAKING OR SUPPORT FOR SMALLER PINE TREES.

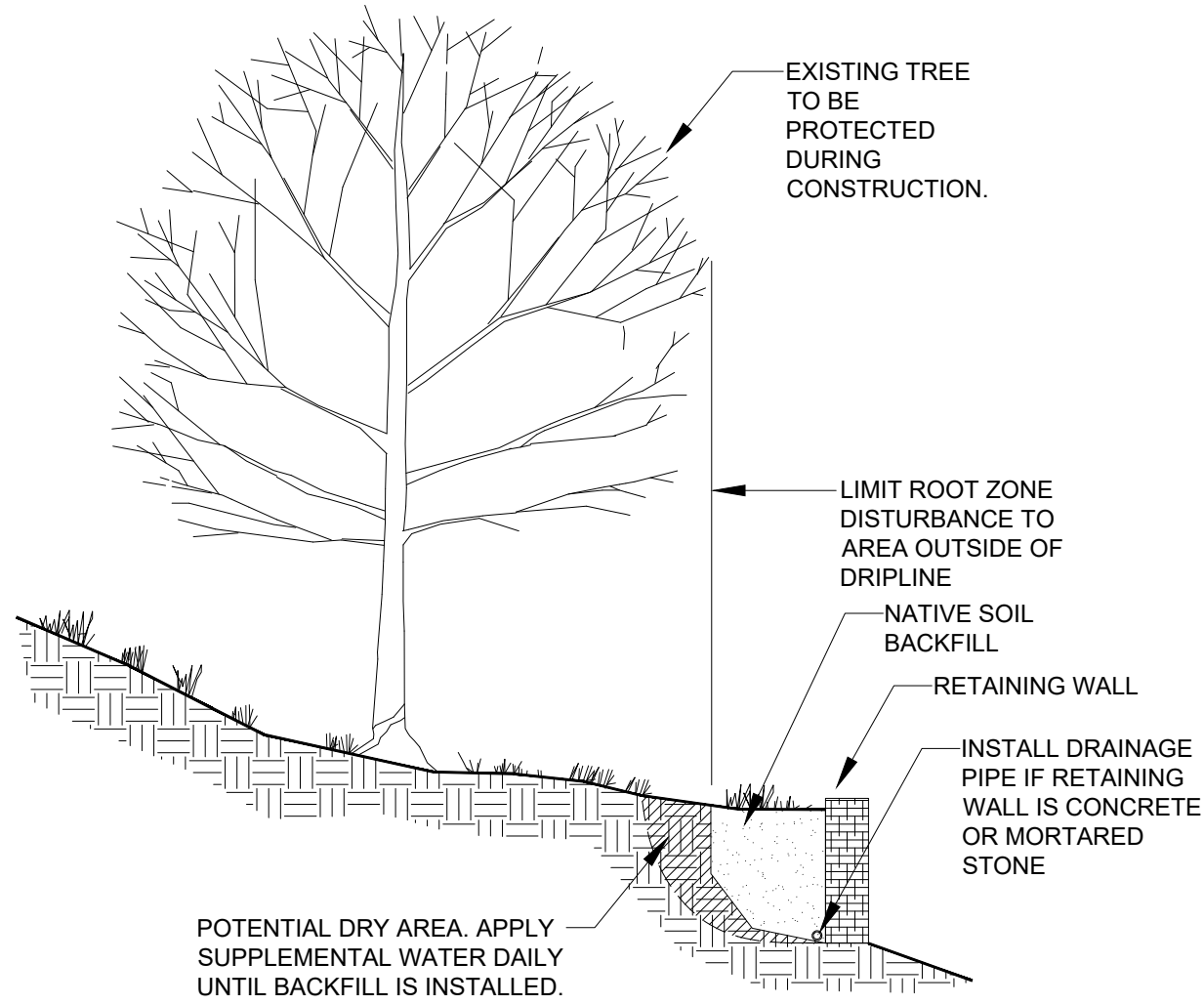
TREE PROTECTION - ON A SLOPE

CITY OF AURORA STANDARD DETAIL



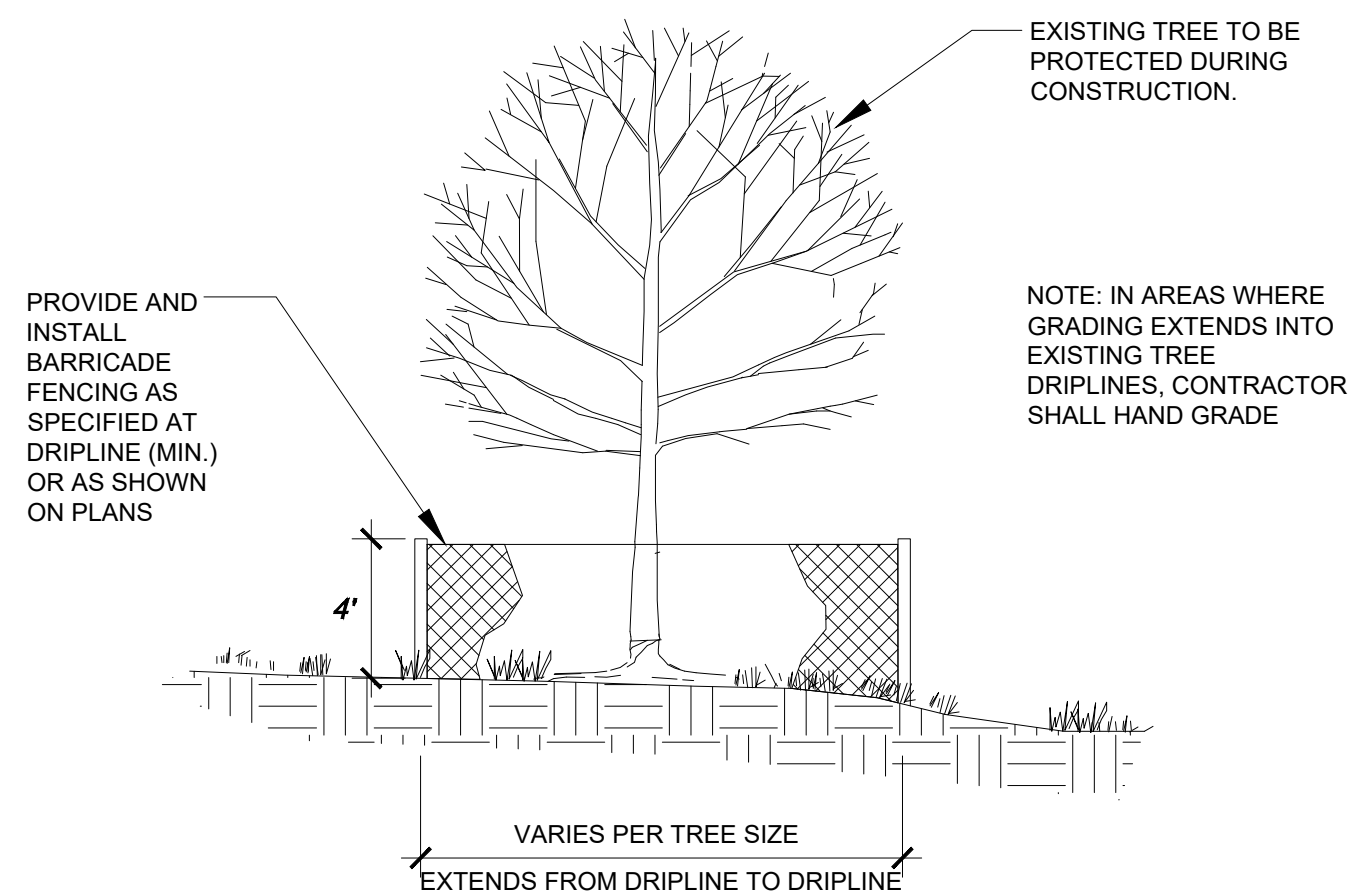
TREE PROTECTION - NEW RETAINING WALL

CITY OF AURORA STANDARD DETAIL

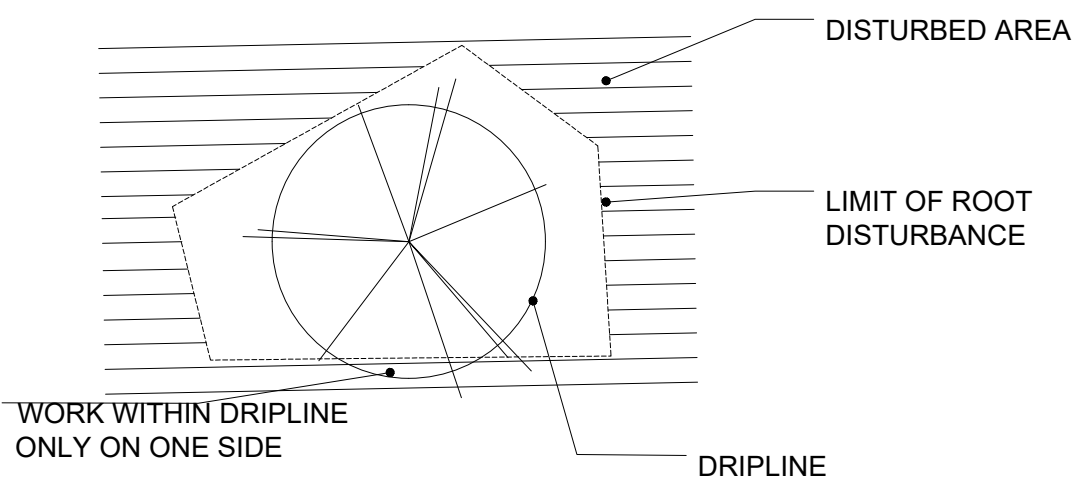


TREE PROTECTION - ELEVATION

CITY OF AURORA STANDARD DETAIL



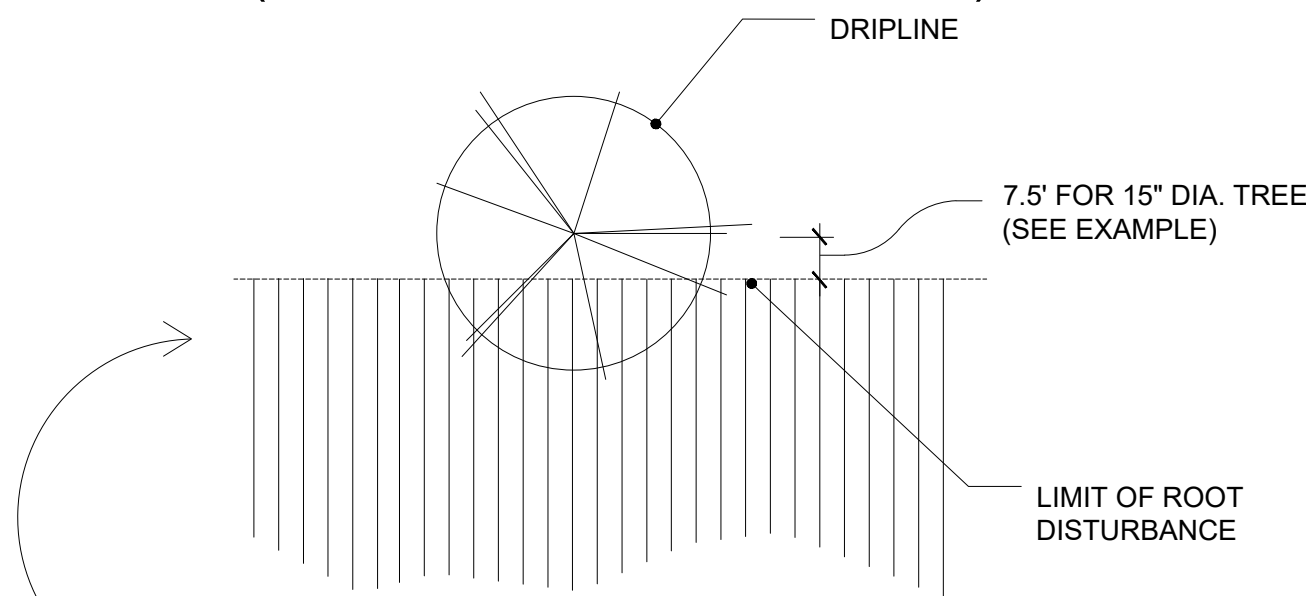
ROOT LOSS ON ONE SIDE WITH SIGNIFICANT IMPACT ON THE TREE SURVIVAL



WHEN WORKING COMPLETELY AROUND A TREE, DO NOT WORK WITHIN THE DRIFLINE ON MORE THAN ONE SIDE. APPLIES TO TRANSPLANTED AND INTRODUCED PINES AS WELL AS CONSTRUCTION IMPACTED TREES.

- TREATMENT:
- USE 3"-5" OF MULCH EXTENDING TO DRIFLINE.
 - PREVENTATIVE SPRAY FOR MPB AND IPS.
 - ALL BARK SURFACES TO BE TREATED INCLUDING TOP AND BRANCHES
 - SUPPLEMENTAL WATERING, 50-100 GALLONS, APPLIED EVERY 1-2 WEEKS.
 - WINTER WATER FOR 1-3 WINTERS.
 - EVALUATE FOR LEAN OR DEFECT.
 - INSPECT 2-3 TIMES PER YEAR FOR WATER NEEDS AND MONITOR FOR INSECTS.
 - STAKING / SUPPORT ON SMALLER PINES.

ROOT LOSS ON ONE SIDE WITH MINIMAL IMPACT ON THE TREE SURVIVAL (30-120 YEARS OLD PINES)



***DO NOT WORK CLOSER TO THE TRUNK THAN 1/2 THE TREE'S DIAMETER CONVERTED TO FEET.

EXAMPLE: 15" DIAMETER PINE
15" CONVERTS TO 7.5'

- TREATMENT:
- PREVENTATIVE SPRAY FOR MOUNTAIN PINE BEETLE (MPB).
 - ALL BARK SURFACES TO BE TREATED INCLUDING TOP BRANCHES.
 - MULCH EDGE OF CUT AREA AND WATER IN.
 - EVALUATE FOR LEAN OR DEFECT.
 - DO NOT FERTILIZE.

NOTE: THIS IS INTENDED AS A GUIDELINE ONLY AND IT IS NOT INTENDED TO BE A HARD AND FAST RULE. TREE AGE, HEALTH AND PROXIMITY TO IMPROVEMENTS CAN AFFECT WORKING DISTANCES.

KINGS POINT NORTH
AURORA, COLORADO
TREE PROTECTION PLAN

SHEET TITLE

TREE
MITIGATION
DETAILS

SHEET NUMBER

TP.11

SHEET11 OF12

NOVEMBER 30, 2022

TRANSPLANTING

1. Transplanting trees shall occur in the spring (March/April) and fall (October/November).
2. For eligible transplants, pines smaller than 6 inch diameter should be moved with a 60 inch spade; pines between 6 inch and 10 inch diameter should be moved with a 90 inch spade minimum.; pines between 10 inch and 12 inch diameter should be moved with 102 inch spade minimum.
3. When extracting a planting hole 'plug' with a tree spade, glazing or smearing of the hole walls can prevent or impede the penetration of roots into surrounding soil, resulting in 'hole-bound' roots, poor root development, subnormal tree growth, or decline. Roughening or scarifying planting hole walls with a claw-type tool or garden fork can greatly improve development of a tree's root system. Scarifying should occur to a depth of three feet around the inside perimeter of the planting hole.

POST-TRANSPLANT AND GENERAL MAINTENANCE

Tree Protection Zone = Critical Root Zone = Area encompassing one linear Foot (Radius) per inch of trunk diameter (e.g., a 12 inch diameter tree will have a critical root zone with a 12-foot radius, or 24-foot diameter)

1. Immediately prior to or immediately after transplanting, all pines should be sprayed with the insecticide Permethrin (Astro or Dagnet) to prevent infestation by species of bark and/or engraver beetles (e.g., Dendroctonus and Ips spp.). Spraying should occur twice per year for three years. Reputable tree services know the specific timing for each spray, and if timed properly using the highest label rate, the some application will suffice for both insect species.
2. Whether or not to guy trees to prevent windthrow or lean depends on several factors such as: crown configuration; tree height and diameter; root ball diameter and structural integrity; and site topography. If guying occurs it shall be performed according to specifications and standards as described in the following publications:

Specifications Handbook - Associated Landscape Contractors of Colorado - current version;
Associated Landscape Contractors of Colorado, Denver, CO.
ANSI A300 (Part 3) - 2000; American Notional Standard for Tree Care Operations - Tree, Shrub and Other Woody Plant Maintenance - Standard Practices (Support Systems a. Cabling, Bracing and Guying)
Best Management Practices -Tree Support Systems: Cabling, Bracing and Gyyjng -2001: International Society of Arboriculture, Champaign, IL

3. After a tree is transplanted, native gross over the soil ball should be treated with a non-selective herbicide. After treatment, the soil ball surface should be mulched with wood chips to a depth of three to four inches. If the grass over the soil ball is dormant, mulch can be applied without prior herbicide treatment.
4. Surface application of water from existing or temporary sprinkler systems may be sufficient for maintenance. During hot and/or dry periods, however, supplemental watering will be necessary. In addition, the trees will need supplemental watering during the foll and winter months. The quantity and frequency of 'winter' watering should be determined after probing the soil and assessing its moisture content. If edaphic and climatic factors warrant, it is reasonable to assume the trees will need watering once every two weeks between October and April. Surface application will be effective only if the ground is not frozen, and a soil berm is established around the perimeter of the root ball: otherwise, a soil needle should be used. Positive drainage away from the tree's trunk should be maintained to prevent puddling of water and rotting of bark and /or wood tissues near the trunk base.
5. One year after completion of site development (grading and landscaping), all trees transplanted or otherwise directly subjected to construction related activities should be fertilized using a liquid formulation containing a balanced fertilizer and mycorrhizal inoculont, and applied according to standards as described in the following publications:

ANSI A300 (Part 2) - 1998: American National Standard for Tree Care Operations - Tree, Shrub and Other Woody Plant Maintenance - Standard Practices (Fertilization) American Notional Standards Institute, New York, NY
Best Management Practices -Tree and Shrub Fertilization -2002; International Society of Arboriculture, Campaighn, IL

6. No pruning should occur on any tree until at least two years offer transplanting, unless such pruning is necessary for reasons of safety, road/sidewalk clearance, hazard mitigation or to remove dead and/or obviously dying branches. All pruning shall conform to standards as described in the following publications:

ANSI A300 (Part 1) - 2001 Pruning; American National Standard for Tree Care Operations Tree, Shrub and Other Woody Plant Maintenance - Standard Practices (Pruning) American National Standards Institute, New York, NY
ANSI Z133.1 2000: American National Standard for Arboricultural Operations - Pruning, Repairing, Maintaining, Removing Trees, and Cutting Brush - Safety Requirements, American National Standards Institute, New York, NY

7. All trees subjected to root pruning, excavation or other construction activity where it is determined that roots greater than 1 inch diameter were cut or removed shall be watered. All such trees shall have the remaining undisturbed root system extending 1 /5 times past the dripline radius watered at a depth of six inches. Holes made by a soil needle shall be on a 3-foot staggered grid pattern. Approximately two gallons of water should be applied per hole. Water should be delivered at 150 to 200 psi, which is sufficient pressure to provide good lateral distribution between holes. For example, for a tree with a dripline radius of 10 feet, water should be applied in an adequate number of holes between the base of the trunk (or within a couple feet of the trunk) and 15 feet away for the entire area not isolated by a root pruning trench. The frequency and duration of a supplemental watering program should be determined by a registered consulting arborist or certified professional plant pathologist.
8. All trees subject to construction related activities shall have a 3- to 4 inch layer of wood chip mulch evenly applied within the tree protection zone. This mulch layer shall be maintained throughout the construction period.
9. Soil in the tree protection zone shall not be compacted to a level greater than that existing prior to construction, and in no case shall soil penetration resistance exceed 2 M Pascal (290 psi). If soil compaction in any tree protection zone exceeds 290 psi, relatively nondisruptive remedial measures (e.g., installation of shallow radial trenches backfilled with amended soil to an acceptable bulk density; or drilling 'aeration' holes) will be specified by a registered consulting arborist or certified professional plant pathologist.
10. Trees should be inspected by a registered consulting arborist or certified professional plant pathologist at least once every two months during construction, between the months of April and November. Pest management treatments should occur if an inspection indicated an existing or potentially injurious pest infestation. Inspections will focus primarily on infestations of bark beetles (i.e., Ips, mountain pine beetle, or red turpentine beetle), wood boring insects, spider mites and infections of dwarf mistletoe. Any required pesticide applications shall be performed by a certified operator licensed by the State Department of Agriculture./or
11. Owner/Developer/Contractor will make every effort to relocate trees indicated on the plan. In a case of unforeseen circumstances such as rocks, soils, or grade and access to the tree makes the tree unable to be transplanted the tree will be removed and the escrow amount will be used to provide trees relocated from another site not on the property.

TREE PRESERVATION/ PROTECTION

(Tree Protection Zone = Critical Root Zone = Area Encompassing One Linear Foot (Radius)
Per Inch of Trunk Diameter (e.g., a 12 inch diameter tree will have a critical root zone with a 12-foot radius, or 24-foot diameter)

1. Fencing shall be placed at construction limits to prevent vehicle and equipment access. Fencing shall be maintained daily. Trespassing beyond established construction limits shall result in a fine of \$100. If not paid within 30 days, the fine shall be deducted from the money due to the contractor. Contractor shall be responsible for all of their workers, subcontractors and material men under this requirement. No vehicle parking is allowed beyond construction limits.
2. Construction within the root zone of trees to remain shall be restricted to the agreed upon limits with regard to excavation access, dirt stockpiling and backfill. Violation of set limits shall result in a fine of \$100 per incidence and may be increased based on the percentage of root zone affected times the value of the tree established prior to construction. If more than 30% of the root zone is damaged, the fine shall be the full value of the tree.
3. Damage to the main trunks of trees is prohibited. Damage not previously approved shall result in a fine or \$100 per incident. Damage to greater than 10% of the main trunk, not resulting in structural damage shall result in a fine based on the percentage of the circumference affected. Damage greater than 30% of the circumference or affecting the structural integrity of the tree will result in a fine equal to the full appraised value of the tree.
4. Limb damage is prohibited, unless approved prior to construction or as authorized by the City Forestry Department. Pruning of affected branches shall be done prior to the start of construction. Damaged branches shall be pruned within 10 days of occurrence utilizing International Society of Arboriculture Standards. Unauthorized branch damage or loss can result in a fine of \$100 per branch as may be determined by the construction manager or his forestry consultant.
5. Concrete truck washout areas shall be in designated areas only. Washout run-off shall not flow into or across the root zones of trees.
6. Tree protection measures shall be in place prior to construction and inspected by the City Forestry Division.
7. When working near trees that were retained in their original location, the soil or terrain in a radius equal to one linear foot from the trunk base for every inch of tree diameter should not be disturbed (e.g., grade changes (cut or fill), trenching, curb and gutter installation, road grading/paving, material/equipment storage). For example, if the subject tree is 12 inches in diameter (as measured at 4.5 feet above grade), then there should be a disturbance-free zone representing a minimum 12-foot radius around the tree. Exceptions to this recommendation can be made on a case by case basis. For example, if construction related activities will occur near the critical root zone on only one side of the tree, then the formula described above can be divided by two (i.e., if the subject tree is 12 inches in diameter, then there should be a disturbance-free zone representing a minimum 6-foot radius for that side of the tree).
8. Any root larger than 1 inch diameter that is severed, torn or otherwise injured by construction should be cut cleanly using a sharp hand tool (pruner, saw or lopper). No paint or dressing of any type shall be used to coat or dress pruning cuts on roots or branches.
9. No objects or materials shall be leaned against or supported by a tree's trunk, branches or exposed roots. The attachment or installation to trees of any sign coble, wire, nail or any other material that . ,s not needed to help support the natural structure of the tree is prohibited.
10. Any herbicides applied under paving materials must be safe for use around trees and labeled for such use. Soil sterilants shall not be used in any location or for any purpose.
11. Prior to construction, root pruning of established or retained trees is a necessary practice to prevent or minimize the ripping, pulling or tearing of roots by construction equipment, especially during grading and trenching. Trees subject to or affected by conditions described in No. 7 above shall be identified and root pruned after the limits of construction have been staked, and before construction commences. Root pruning trench lines shall be marked with paint. The distance between the root pruning trench and the tree trunk will be determined in the field, based on factors such as: the limits of construction staking; tree health, size and location; extent of the existing dripline; and related factors. In most cases the root pruning trench will occur outside the critical root zone. Pruning shall occur with a mechanical root pruner, or equivalent, and trench depth shall be approximately 14-20 inches. Excavated soil shall be backfilled in the trench immediately after trenching. Roots shall be pruned by hand in areas inaccessible to the root pruning machine. All root pruned trees shall receive supplemental water.
12. The need for H construction protection devices and measures ff such as retaining walls, special fencing, aeration systems and sand wells around tree trunks shall be determined on a case by case basis.



PROJECT NAME

KINGS POINT NORTH
AURORA, COLORADO
TREE PROTECTION PLAN

SHEET TITLE

TREE
PROTECTION
NOTES

SHEET NUMBER

TP.12

SHEET 12 OF 12

NOVEMBER 30, 2022