

Name: Existing Boundary_1st Submittal_10.29.2024

North: 1159529.3485' East: 3196966.5752'

Segment #1 : Line

Course: N89.3442E (dms) Length: 185.04'
North: 1159530.7103' East: 3197151.6102'

Segment #2 : Line

Course: N00.3035E (dms) Length: 172.98'
North: 1159703.6835' East: 3197153.1491'

Segment #3 : Line

Course: N89.3435E (dms) Length: 89.88'
North: 1159704.3480' East: 3197243.0266'

Segment #4 : Line

Course: N00.3035E (dms) Length: 96.92'
North: 1159801.2641' East: 3197243.8888'

Segment #5 : Line

Course: N89.3435E (dms) Length: 289.86'
North: 1159803.4072' East: 3197533.7409'

Segment #6 : Curve

Length: 23.97' Radius: 15.00'
Delta: 091°34'28" Tangent: 15.42'
Chord: 21.50' Course: S44.5626E (dms)
Course In: S00.4340E (dms) Course Out: S89.0912E (dms)
RP North: 1159788.4084' East: 3197533.9314'
End North: 1159788.1886' East: 3197548.9279'

Segment #7 : Line

Course: S00.2223W (dms) Length: 545.70'
North: 1159242.5002' East: 3197545.3749'

Segment #8 : Line

Course: N89.3435E (dms) Length: 3.62'
North: 1159242.5269' East: 3197548.9948'

Segment #9 : Line

Course: S00.3035W (dms) Length: 397.47'
North: 1158845.0727' East: 3197545.4588'

Segment #10 : Line

Course: S89.3615W (dms) Length: 2.23'
North: 1158845.0573' East: 3197543.2288'

Segment #11 : Line

Course: S00.2051W (dms) Length: 45.20'
North: 1158799.8581' East: 3197542.9547'

Segment #12 : Line

Course: S00.2035W (dms) Length: 241.13'
North: 1158558.7324' East: 3197541.5110'

Segment #13 : Curve

Length: 23.37' Radius: 15.00'
Delta: 089°16'11" Tangent: 14.81'
Chord: 21.08' Course: S44.5841W (dms)
Course In: N89.3925W (dms) Course Out: S00.2314E (dms)
RP North: 1158558.8222' East: 3197526.5112'
End North: 1158543.8209' East: 3197526.6109'

Segment #14 : Line

Course: S89.3646W (dms) Length: 543.46'
North: 1158540.1481' East: 3196983.1633'

Segment #15 : Curve

Length: 39.66' Radius: 25.00'
Delta: 090°53'47" Tangent: 25.39'

Chord: 35.63' Course: N44.5620W (dms)
Course In: N00.2314W (dms) Course Out: N89.2927W (dms)
RP North: 1158565.1475' East: 3196982.9943'
End North: 1158565.3691' East: 3196957.9959'

Segment #16 : Line

Course: N00.3033E (dms) Length: 275.67'
North: 1158841.0282' East: 3196960.4457'

Segment #17 : Line

Course: N00.3035E (dms) Length: 688.34'
North: 1159529.3410' East: 3196966.5693'

Perimeter: 3664.51' Area: 674910 Sq. Ft.
Error Closure: 0.0096 Course: S38.0822W (dms)
Error North: -0.00751 East: -0.00590

Precision 1: 380803.13

Name: Parcel 1: L1, B1, Rollins Sub Flg 4_1st Submittal_10.21.2024

North: 1159029.9150' East: 3196857.8608'

Segment #1 : Line

Course: N89.3442E (dms) Length: 185.04'
North: 1159031.2768' East: 3197042.8958'

Segment #2 : Line

Course: N00.3035E (dms) Length: 172.98'
North: 1159204.2499' East: 3197044.4346'

Segment #3 : Line

Course: N89.3435E (dms) Length: 89.88'
North: 1159204.9144' East: 3197134.3122'

Segment #4 : Line

Course: N00.3035E (dms) Length: 96.92'
North: 1159301.8306' East: 3197135.1744'

Segment #5 : Line

Course: N89.3435E (dms) Length: 289.86'
North: 1159303.9736' East: 3197425.0265'

Segment #6 : Curve

Length: 23.97' Radius: 15.00'
Delta: 091°34'28" Tangent: 15.42'
Chord: 21.50' Course: S44.5626E (dms)
Course In: S00.4340E (dms) Course Out: S89.0912E (dms)
RP North: 1159288.9748' East: 3197425.2170'
End North: 1159288.7551' East: 3197440.2135'

Segment #7 : Line

Course: S00.2223W (dms) Length: 545.70'
North: 1158743.0666' East: 3197436.6604'

Segment #8 : Line

Course: S89.3435W (dms) Length: 581.41'
North: 1158738.7681' East: 3196855.2663'

Segment #9 : Line

Course: N00.3035E (dms) Length: 291.16'
North: 1159029.9165' East: 3196857.8566'

Perimeter: 2276.93' Area: 267088 Sq. Ft.
Error Closure: 0.0045 Course: N69.3521W (dms)
Error North: 0.00157 East: -0.00423

Precision 1: 505433.33

Name: Parcel 2: Parcel 2, SWD Rec. No. 2017000081056_1st Submittal_10.21.2024

North: 1158704.5952' East: 3196852.6750'

Segment #1 : Line

Course: N89.3435E (dms) Length: 585.03'
North: 1158708.9206' East: 3197437.6890'

Segment #2 : Line

Course: S00.3035W (dms) Length: 397.47'
North: 1158311.4663' East: 3197434.1530'

Segment #3 : Line

Course: S89.3615W (dms) Length: 585.02'
North: 1158307.4247' East: 3196849.1469'

Segment #4 : Line

Course: N00.3035E (dms) Length: 397.19'
North: 1158704.5989' East: 3196852.6804'

Perimeter: 1964.70' Area: 232416 Sq. Ft.
Error Closure: 0.0066 Course: N55.5706E (dms)
Error North: 0.00370 East: 0.00548

Precision 1: 297683.33

Name: Parcel 3: L1, B1_Chambers Road Exchange Sub Flg 1_1st Submittal_10.21.2024

North: 1158214.1732' East: 3196836.4341'

Segment #1 : Line

Course: N89.3615E (dms) Length: 178.95'
North: 1158215.4095' East: 3197015.3799'

Segment #2 : Curve

Length: 130.80' Radius: 280.00'
Delta: 026°45'56" Tangent: 66.62'
Chord: 129.61' Course: S77.0047E (dms)
Course In: N26.2211E (dms) Course Out: S00.2345E (dms)
RP North: 1158466.2745' East: 3197139.7452'
End North: 1158186.2823' East: 3197141.6746'

Segment #3 : Line

Course: N89.3615E (dms) Length: 262.16'
North: 1158188.0935' East: 3197403.8283'

Segment #4 : Curve

Length: 23.76' Radius: 15.00'
Delta: 090°44'20" Tangent: 15.19'
Chord: 21.35' Course: S45.0135E (dms)
Course In: S00.2345E (dms) Course Out: S89.3925E (dms)
RP North: 1158173.0938' East: 3197403.9320'
End North: 1158173.0037' East: 3197418.9320'

Segment #5 : Line

Course: S00.2035W (dms) Length: 241.13'
North: 1157931.8780' East: 3197417.4883'

Segment #6 : Curve

Length: 23.37' Radius: 15.00'
Delta: 089°16'11" Tangent: 14.81'

Chord: 21.08' Course: S44.5841W (dms)
Course In: N89.3925W (dms) Course Out: S00.2314E (dms)
RP North: 1157931.9678' East: 3197402.4886'
End North: 1157916.9665' East: 3197402.5882'

Segment #7 : Line

Course: S89.3646W (dms) Length: 543.46'
North: 1157913.2937' East: 3196859.1406'

Segment #8 : Curve

Length: 39.66' Radius: 25.00'
Delta: 090°53'47" Tangent: 25.39'
Chord: 35.63' Course: N44.5620W (dms)
Course In: N00.2314W (dms) Course Out: N89.2927W (dms)
RP North: 1157938.2931' East: 3196858.9716'
End North: 1157938.5147' East: 3196833.9733'

Segment #9 : Line

Course: N00.3033E (dms) Length: 275.67'
North: 1158214.1739' East: 3196836.4230'

Perimeter: 1718.96' Area: 164479 Sq. Ft.
Error Closure: 0.0111 Course: N86.3206W (dms)
Error North: 0.00067 East: -0.01112

Precision 1: 153967.57

Name: Vacated E 35th Place_1st Submittal_10.21.2024

North: 1158266.0680' East: 3197028.3396'

Segment #1 : Line

Course: N89.3615E (dms) Length: 403.84'
North: 1158268.8579' East: 3197432.1700'

Segment #2 : Line

Course: S00.2051W (dms) Length: 45.20'
North: 1158223.6587' East: 3197431.8958'

Segment #3 : Curve

Length: 23.76' Radius: 15.00'
Delta: 090°44'20" Tangent: 15.19'
Chord: 21.35' Course: N45.0135W (dms)
Course In: N89.3925W (dms) Course Out: N00.2345W (dms)
RP North: 1158223.7486' East: 3197416.8961'
End North: 1158238.7485' East: 3197416.7921'

Segment #4 : Line

Course: S89.3615W (dms) Length: 262.16'
North: 1158236.9374' East: 3197154.6384'

Segment #5 : Curve

Length: 130.80' Radius: 280.00'
Delta: 026°45'56" Tangent: 66.62'
Chord: 129.61' Course: N77.0047W (dms)
Course In: N00.2345W (dms) Course Out: S26.2211W (dms)
RP North: 1158516.9307' East: 3197152.7040'
End North: 1158266.0645' East: 3197028.3436'

Perimeter: 865.75' Area: 10927 Sq. Ft.
Error Closure: 0.0053 Course: S49.3047E (dms)
Error North: -0.00346 East: 0.00406

Precision 1: 162671.70

Name: Lot 1, Block 1_1st Submittal_10.29.2024

North: 1159620.1518' East: 3198694.3893'

Segment #1 : Line

Course: N89.3442E (dms) Length: 168.01'
North: 1159621.3883' East: 3198862.3947'

Segment #2 : Line

Course: N00.3035E (dms) Length: 172.98'
North: 1159794.3614' East: 3198863.9336'

Segment #3 : Line

Course: N89.3435E (dms) Length: 89.88'
North: 1159795.0259' East: 3198953.8111'

Segment #4 : Line

Course: N00.3035E (dms) Length: 96.92'
North: 1159891.9421' East: 3198954.6734'

Segment #5 : Line

Course: N89.3435E (dms) Length: 280.82'
North: 1159894.0183' East: 3199235.4857'

Segment #6 : Curve

Length: 31.68' Radius: 20.00'
Delta: 090°45'51" Tangent: 20.27'
Chord: 28.47' Course: S45.0220E (dms)
Course In: S00.2516E (dms) Course Out: S89.3925E (dms)
RP North: 1159874.0188' East: 3199235.6327'
End North: 1159873.9006' East: 3199255.6307'

Segment #7 : Line

Course: S00.2035W (dms) Length: 539.04'
North: 1159334.8703' East: 3199252.4032'

Segment #8 : Line

Course: N89.2925W (dms) Length: 560.52'
North: 1159339.8568' East: 3198691.9054'

Segment #9 : Line

Course: N00.3035E (dms) Length: 280.30'
North: 1159620.1457' East: 3198694.3990'

Perimeter: 2220.15' Area: 256366 Sq. Ft.
Error Closure: 0.0115 Course: S57.5444E (dms)
Error North: -0.00610 East: 0.00973

Precision 1: 192777.39

Name: Lot 2, Block 1_1st Submittal_10.29.2023

North: 1158966.7393' East: 3198686.3094'

Segment #1 : Line

Course: N00.3035E (dms) Length: 188.27'
North: 1159155.0018' East: 3198687.9843'

Segment #2 : Line

Course: S89.2925E (dms) Length: 212.48'
North: 1159153.1116' East: 3198900.4558'

Segment #3 : Line

Course: S00.3035W (dms) Length: 188.27'
North: 1158964.8490' East: 3198898.7810'

Segment #4 : Line

Course: N89.2925W (dms) Length: 212.48'
North: 1158966.7393' East: 3198686.3094'

Perimeter: 801.49' Area: 40003 Sq. Ft.
Error Closure: 0.0000 Course: N00.0000E (dms)
Error North: 0.00000 East: 0.00000

Precision 1: 801500000.00

Name: Lot 3, Block 1_1st Submittal_10.29.2024

North: 1158598.8001' East: 3198679.0334'

Segment #1 : Line

Course: N00.3035E (dms) Length: 351.63'
North: 1158950.4162' East: 3198682.1616'

Segment #2 : Line

Course: S89.2925E (dms) Length: 212.48'
North: 1158948.5259' East: 3198894.6331'

Segment #3 : Line

Course: S00.3035W (dms) Length: 368.62'
North: 1158579.9205' East: 3198891.3538'

Segment #4 : Line

Course: S89.3646W (dms) Length: 192.19'
North: 1158578.6216' East: 3198699.1682'

Segment #5 : Curve

Length: 31.73' Radius: 20.00'
Delta: 090°53'49" Tangent: 20.32'
Chord: 28.50' Course: N44.5619W (dms)
Course In: N00.2314W (dms) Course Out: N89.2925W (dms)
RP North: 1158598.6212' East: 3198699.0330'
End North: 1158598.7958' East: 3198679.0373'

Perimeter: 1156.66' Area: 78589 Sq. Ft.
Error Closure: 0.0058 Course: S41.5426E (dms)
Error North: -0.00434 East: 0.00389

Precision 1: 198865.52

Name: Lot 4, Block 1_1st Submittal_10.29.2024

North: 1159167.3570' East: 3199267.8907'

Segment #1 : Line

Course: S00.2035W (dms) Length: 564.64'
North: 1158602.7271' East: 3199264.5100'

Segment #2 : Curve

Length: 31.16' Radius: 20.00'
Delta: 089°16'11" Tangent: 19.75'
Chord: 28.10' Course: S44.5841W (dms)
Course In: N89.3925W (dms) Course Out: S00.2314E (dms)
RP North: 1158602.8469' East: 3199244.5103'
End North: 1158582.8498' East: 3199244.6479'

Segment #3 : Line

Course: S89.3646W (dms) Length: 330.37'
North: 1158580.6171' East: 3198914.2854'

Segment #4 : Line

Course: N00.3035E (dms) Length: 589.87'
North: 1159170.4638' East: 3198919.5330'

Segment #5 : Line

Course: S89.2925E (dms) Length: 348.37'
North: 1159167.3646' East: 3199267.8892'

Perimeter: 1864.41' Area: 204956 Sq. Ft.
Error Closure: 0.0077 Course: N10.5154W (dms)
Error North: 0.00757 East: -0.00145

Precision 1: 241733.77

Name: ROW Dedication_1st Submittal_10.29.2024

North: 1159588.9510' East: 3197824.4722'

Segment #1 : Line

Course: N89.3442E (dms) Length: 17.04'
North: 1159589.0764' East: 3197841.5118'

Segment #2 : Line

Course: S00.3035W (dms) Length: 965.10'
North: 1158624.0146' East: 3197832.9260'

Segment #3 : Curve

Length: 31.73' Radius: 20.00'
Delta: 090°53'49" Tangent: 20.32'
Chord: 28.50' Course: S44.5619E (dms)
Course In: S89.2925E (dms) Course Out: S00.2314E (dms)
RP North: 1158623.8367' East: 3197852.9252'
End North: 1158603.8405' East: 3197853.0570'

Segment #4 : Line

Course: N89.3646E (dms) Length: 522.56'
North: 1158607.3721' East: 3198375.6050'

Segment #5 : Curve

Length: 31.16' Radius: 20.00'
Delta: 089°16'11" Tangent: 19.75'
Chord: 28.10' Course: N44.5841E (dms)
Course In: N00.2314W (dms) Course Out: S89.3925E (dms)
RP North: 1158627.3716' East: 3198375.4699'
End North: 1158627.2494' East: 3198395.4671'

Segment #6 : Line

Course: N00.2035E (dms) Length: 1215.60'
North: 1159842.8276' East: 3198402.7454'

Segment #7 : Curve

Length: 31.68' Radius: 20.00'
Delta: 090°45'51" Tangent: 20.27'
Chord: 28.47' Course: N45.0220W (dms)
Course In: N89.3925W (dms) Course Out: N00.2516W (dms)
RP North: 1159842.9473' East: 3198382.7458'
End North: 1159862.9452' East: 3198382.6004'

Segment #8 : Line

Course: N89.3435E (dms) Length: 9.04'
North: 1159863.0121' East: 3198391.6402'

Segment #9 : Curve

Length: 23.97' Radius: 15.00'
Delta: 091°34'28" Tangent: 15.42'
Chord: 21.50' Course: S44.5626E (dms)
Course In: S00.4340E (dms) Course Out: S89.0912E (dms)
RP North: 1159848.0133' East: 3198391.8307'
End North: 1159847.7935' East: 3198406.8272'

Segment #10 : Line

Course: S00.2223W (dms) Length: 545.70'
North: 1159302.1051' East: 3198403.2741'

Segment #11 : Line

Course: N89.3435E (dms) Length: 3.62'
North: 1159302.1318' East: 3198406.8941'

Segment #12 : Line

Course: S00.3035W (dms) Length: 397.47'
North: 1158904.6776' East: 3198403.3581'

Segment #13 : Line

Course: S89.3615W (dms) Length: 2.23'
North: 1158904.6622' East: 3198401.1281'

Segment #14 : Line

Course: S00.2051W (dms) Length: 45.20'
North: 1158859.4630' East: 3198400.8540'

Segment #15 : Line

Course: S00.2035W (dms) Length: 241.13'
North: 1158618.3373' East: 3198399.4102'

Segment #16 : Curve

Length: 23.37' Radius: 15.00'
Delta: 089°16'11" Tangent: 14.81'
Chord: 21.08' Course: S44.5841W (dms)
Course In: N89.3925W (dms) Course Out: S00.2314E (dms)
RP North: 1158618.4271' East: 3198384.4105'
End North: 1158603.4258' East: 3198384.5101'

Segment #17 : Line

Course: S89.3646W (dms) Length: 543.46'
North: 1158599.7530' East: 3197841.0626'

Segment #18 : Curve

Length: 39.66' Radius: 25.00'
Delta: 090°53'47" Tangent: 25.39'
Chord: 35.63' Course: N44.5620W (dms)
Course In: N00.2314W (dms) Course Out: N89.2927W (dms)
RP North: 1158624.7524' East: 3197840.8936'
End North: 1158624.9740' East: 3197815.8952'

Segment #19 : Line

Course: N00.3033E (dms) Length: 275.67'
North: 1158900.6331' East: 3197818.3450'

Segment #20 : Line

Course: N00.3035E (dms) Length: 688.34'
North: 1159588.9459' East: 3197824.4686'

Perimeter: 5653.73' Area: 25236 Sq. Ft.
Error Closure: 0.0062 Course: S35.3454W (dms)

Error North: -0.00508 East: -0.00364

Precision 1: 908941.94

Name: Subdivision Boundary_1st Submittal_10.29.2024

North: 1158006.7838' East: 3197019.8221'

Segment #1 : Line

Course: N89.3442E (dms) Length: 168.01'
North: 1158008.0203' East: 3197187.8276'

Segment #2 : Line

Course: N00.3035E (dms) Length: 172.98'
North: 1158180.9935' East: 3197189.3664'

Segment #3 : Line

Course: N89.3435E (dms) Length: 89.88'
North: 1158181.6580' East: 3197279.2440'

Segment #4 : Line

Course: N00.3035E (dms) Length: 96.92'
North: 1158278.5741' East: 3197280.1062'

Segment #5 : Line

Course: N89.3435E (dms) Length: 280.82'
North: 1158280.6503' East: 3197560.9185'

Segment #6 : Curve

Length: 31.68' Radius: 20.00'
Delta: 090°45'51" Tangent: 20.27'
Chord: 28.47' Course: S45.0220E (dms)
Course In: S00.2516E (dms) Course Out: S89.3925E (dms)
RP North: 1158260.6509' East: 3197561.0655'
End North: 1158260.5327' East: 3197581.0635'

Segment #7 : Line

Course: S00.2035W (dms) Length: 1215.60'
North: 1157044.9545' East: 3197573.7852'

Segment #8 : Curve

Length: 31.16' Radius: 20.00'
Delta: 089°16'11" Tangent: 19.75'
Chord: 28.10' Course: S44.5841W (dms)
Course In: N89.3925W (dms) Course Out: S00.2314E (dms)
RP North: 1157045.0742' East: 3197553.7856'
End North: 1157025.0771' East: 3197553.9231'

Segment #9 : Line

Course: S89.3646W (dms) Length: 522.56'
North: 1157021.5456' East: 3197031.3751'

Segment #10 : Curve

Length: 31.73' Radius: 20.00'
Delta: 090°53'49" Tangent: 20.32'
Chord: 28.50' Course: N44.5619W (dms)
Course In: N00.2314W (dms) Course Out: N89.2925W (dms)
RP North: 1157041.5451' East: 3197031.2399'
End North: 1157041.7197' East: 3197011.2441'

Segment #11 : Line

Course: N00.3035E (dms) Length: 965.10'
North: 1158006.7815' East: 3197019.8298'

Perimeter: 3606.44' Area: 649674 Sq. Ft.
Error Closure: 0.0081 Course: S73.0405E (dms)
Error North: -0.00236 East: 0.00774

Precision 1: 444066.67

Name: Tract B_1st Submittal_10.29.2024

North: 1159307.3656' East: 3199269.9865'

Segment #1 : Line

Course: S00.2035W (dms) Length: 111.92'
North: 1159195.4476' East: 3199269.3164'

Segment #2 : Line

Course: N89.2925W (dms) Length: 348.37'
North: 1159198.5467' East: 3198920.9602'

Segment #3 : Line

Course: N00.3035E (dms) Length: 111.92'
North: 1159310.4623' East: 3198921.9559'

Segment #4 : Line

Course: S89.2925E (dms) Length: 348.04'
North: 1159307.3661' East: 3199269.9821'

Perimeter: 920.26' Area: 38972 Sq. Ft.
Error Closure: 0.0045 Course: N83.2402W (dms)
Error North: 0.00051 East: -0.00443

Precision 1: 204500.00

Name: Tract C_1st Submittal_10.29.2024

North: 1159167.6910' East: 3198688.4194'

Segment #1 : Line

Course: N00.3035E (dms) Length: 144.90'
North: 1159312.5852' East: 3198689.7085'

Segment #2 : Line

Course: S89.2925E (dms) Length: 212.48'
North: 1159310.6950' East: 3198902.1801'

Segment #3 : Line

Course: S00.3035W (dms) Length: 144.90'
North: 1159165.8007' East: 3198900.8910'

Segment #4 : Line

Course: N89.2925W (dms) Length: 212.48'
North: 1159167.6910' East: 3198688.4194'

Perimeter: 714.76' Area: 30788 Sq. Ft.
Error Closure: 0.0000 Course: N00.0000E (dms)
Error North: 0.00000 East: 0.00000

Precision 1: 714760000.00

COLORADO LAND SURVEY MONUMENT RECORD

Department of Regulatory Agencies

Board of Licensure for Architects, Professional Engineers and Professional Land Surveyors

1560 Broadway, Suite 1350

Denver, CO 80202

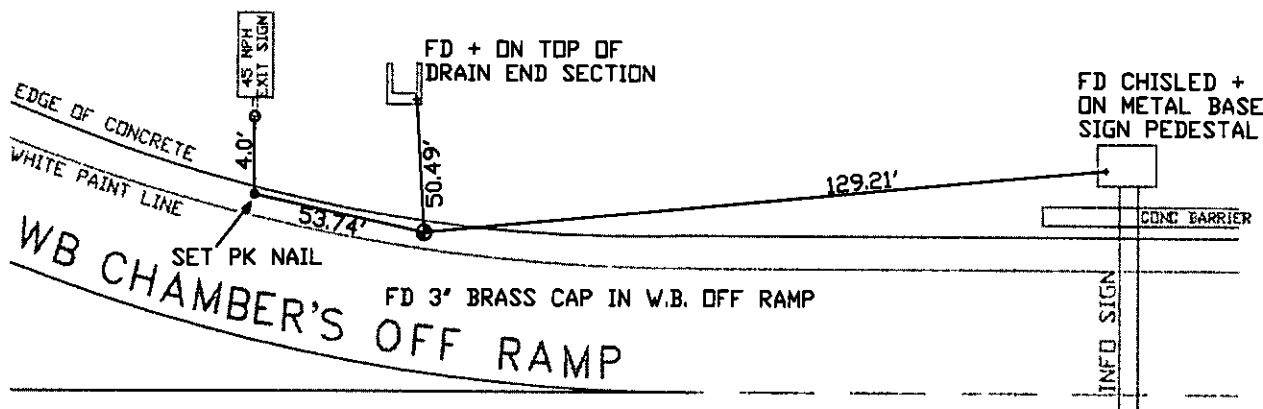
Phone (303) 894-7800; Fax (303) 894-2310; EMAIL aes@dora.state.co.us; V/TDD 711

SEP 10 2014

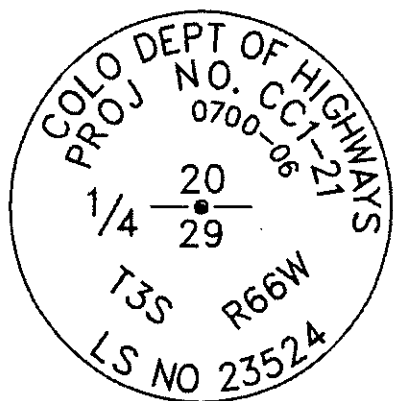
COLO. ST. BD. OF LIC.

Report one monument only on this form - Reproduction of this form is authorized. **FORAES**
All items are to be filled in by the Land Surveyor using **PERMANENT BLACK LETTERING** and lines which can be reproduced.

1. TYPE OF MONUMENT: ☐ SECTION CORNER ☒ QUARTER CORNER ☐ SIXTEENTH CORNER ☐ OTHER _____
2. DESCRIPTION AND DATE OF MONUMENT FOUND:
3. DESCRIPTION OF MONUMENT SET BY YOU TO PERPETUATE THE LOCATION OF THIS POINT:
FOUND 3" BRASS CAP AT SURFACE ON 8/25/2014
4. SKETCH SHOWING RELATIVE LOCATION OF MONUMENT, ACCESSORIES AND REFERENCE POINTS STATING WHETHER FOUND OR SET, SHOW SUPPORTING AND/OR CONTRADICTORY EVIDENCE WHERE APPLICABLE:



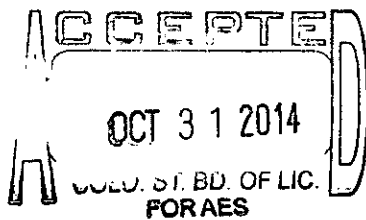
I-70 WEST BOUND



Stamping on Cap

- a. Date of field Work to Establish, Restore or Rehabilitate Monument: **AUGUST 25, 2014**
- b. Date Monument was used as a Control corner: _____

(Surveyor, do not fill in)



RECEIVED AT OFFICE OF THE COUNTY CLERK
_____ COUNTY

BY: _____

DATE: _____

Record to be filed numerically by Index Reference Number, then alphabetically by letter in the index reference number, then under appropriate Township, Range, and Meridian.

5. CERTIFICATION

This is to certify that I was in responsible charge of the surveying work described in this record and that to the best of my knowledge the information presented herein is true and correct.

Name (Please Print): **GREG PAYNE**

Firm Name: **CITY OF AURORA**

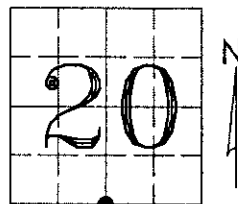
Firm Address: **13636 E. ELLSWORTH AVE.**

AURORA, COLORADO 80012

Phone: **303-326-8015**

6. LOCATION DIAGRAM

1" = 1 Mile



● = Location of Monument



Signature/Date through Seal

7. SEC **20** T **3S** R **66W**, **6TH** P.M.
COUNTY **ADAMS** INDEX REF NUMBER **07-J**

**8. SEC _____ T _____ R _____, _____ P.M.
COUNTY _____ INDEX REF NUMBER _____

** To be used only for monuments located on county lines



Dora
Department of Regulatory Agencies

Rev.02/01/2011

COLORADO LAND SURVEY MONUMENT RECORD

Department of Regulatory Agencies
Board of Licensure for Architects, Professional Engineers and Professional Land Surveyors
1560 Broadway, Suite 1350
Denver, CO 80202
Phone (303) 894-7800; Fax (303) 894-2310; EMAIL aes@dora.state.co.us
APR 21 2011
COLO. ST. BD. OF LIC. FOR AES

Report one monument only on this form - Reproduction of this form is authorized.
All items are to be filled in by the Land Surveyor using **PERMANENT BLACK LETTERING** and lines which can be reproduced.

1. TYPE OF MONUMENT: ☐ SECTION CORNER ☒ QUARTER CORNER ☐ SIXTEENTH CORNER ☐ OTHER _____

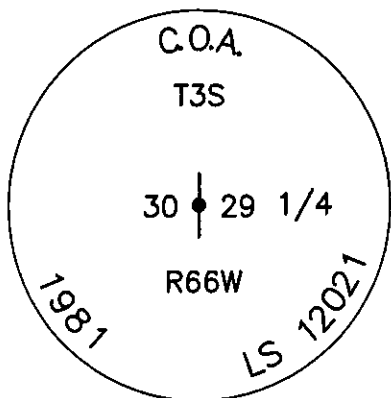
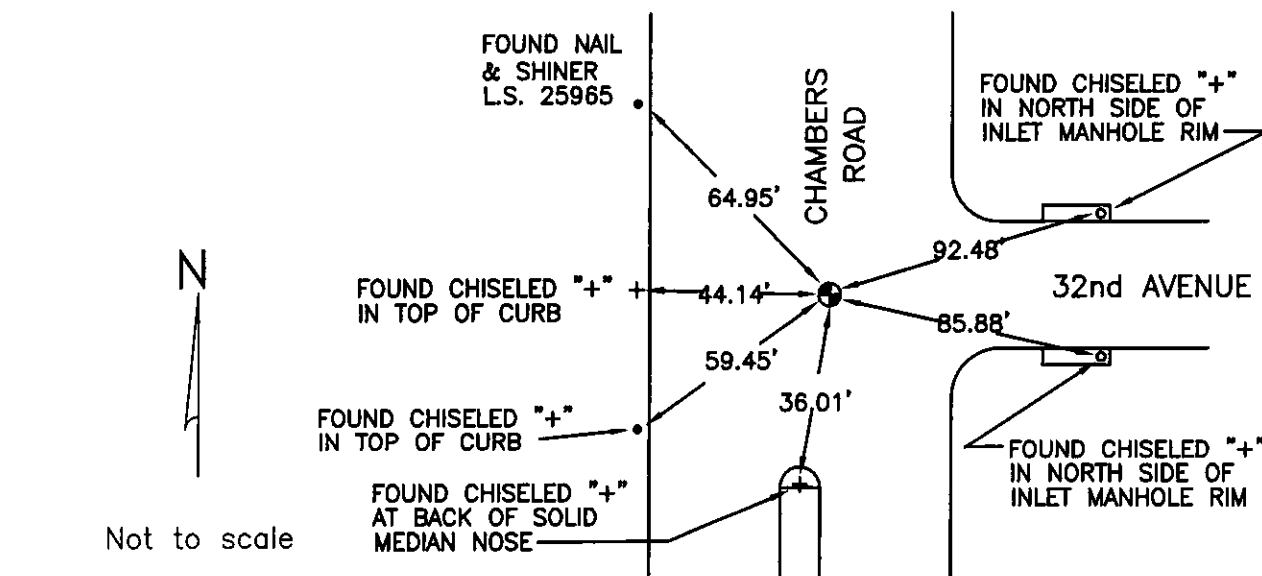
2. DESCRIPTION AND DATE OF MONUMENT FOUND:

FOUND 3" CITY OF AURORA CAP L.S. #12021 IN RANGE BOX
(SEE CAP MARKINGS BELOW)

3. DESCRIPTION OF MONUMENT SET BY YOU TO PERPETUATE THE LOCATION OF THIS POINT:

NONE

4. SKETCH SHOWING RELATIVE LOCATION OF MONUMENT, ACCESSORIES AND REFERENCE POINTS STATING WHETHER FOUND OR SET, SHOW SUPPORTING AND/OR CONTRADICTORY EVIDENCE WHERE APPLICABLE:



Stamping on Cap

a. Date of field Work to Establish, Restore or Rehabilitate Monument: 2/23/2011

b. Date Monument was used as a Control corner: _____

(Surveyor, do not fill in)

ACCEPTED
MAY 31 2011
COLO. ST. BD. OF LIC. FOR AES

RECEIVED AT OFFICE OF THE COUNTY CLERK
_____ COUNTY

BY: _____
DATE: _____

Record to be filed numerically by Index Reference Number, then alphabetically by letter in the index reference number, then under appropriate Township, Range, and Meridian.

5. CERTIFICATION

This is to certify that I was in responsible charge of the surveying work described in this record and that to the best of my knowledge the information presented herein is true and correct.

Name (Please Print): CHRISTOPHER R. RAML

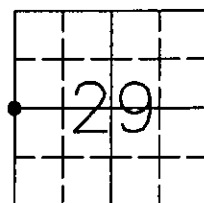
Firm Name: WOOLPERT, INC.

Firm Address: 116 INVERNESS DRIVE E. #105
ENGLEWOOD, CO 80112-5125

Phone: 303-925-1400

6. LOCATION DIAGRAM

1" = 1 Mile



● = Location of Monument



Signature/Date through Seal

7. SEC 29 T 3S R 66W, 6TH P.M.
COUNTY ADAMS INDEX REF NUMBER 05-G

**8. SEC _____ T _____ R _____, _____ P.M.
COUNTY _____ INDEX REF NUMBER _____

** To be used only for monuments located on county lines



Dora
Department of Regulatory Agencies

Rev.02/01/2011