

02 NORTH OVERALL BUILDING ELEVATION - SDP
1/16" = 1'-0"



01 EAST OVERALL BUILDING ELEVATION - SDP
1/16" = 1'-0"

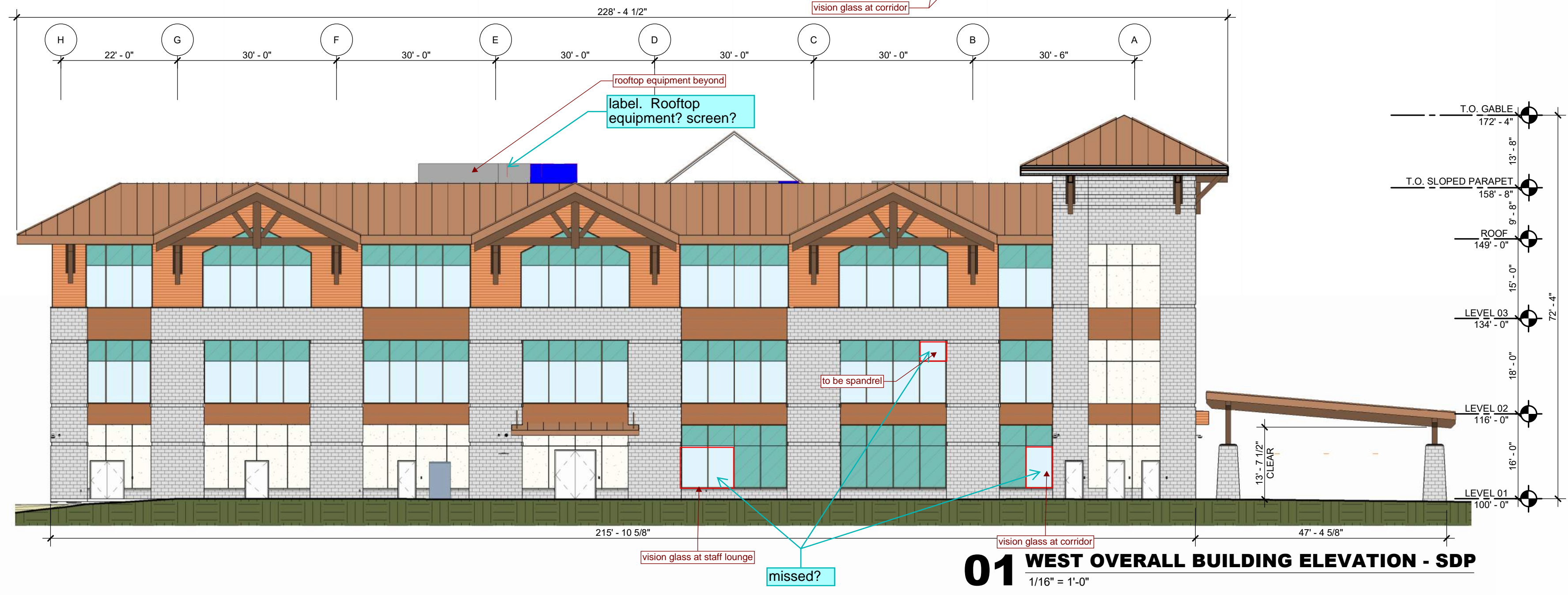
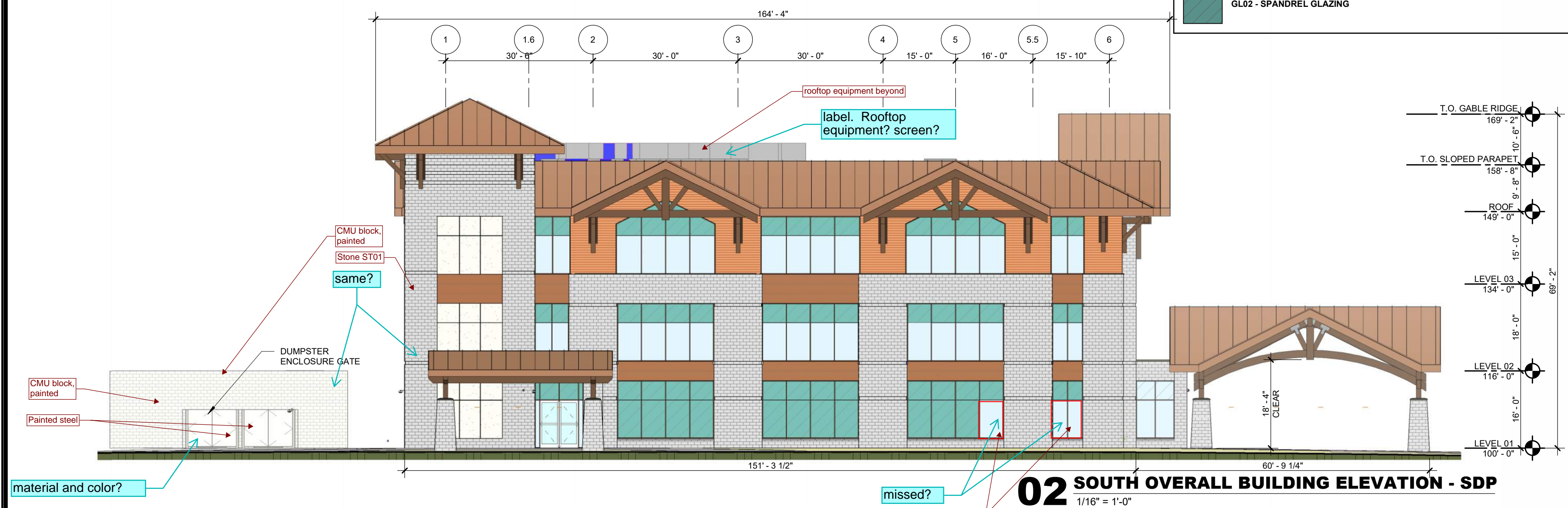
Rooftop Equipment.

1. All rooftop mechanical equipment shall be screened from view from a point four feet above grade level on each property line with an abutting property, and from a point four feet above grade from each sidewalk on the far side of each adjacent street, or if there is no sidewalk then from a point five feet above grade at the curb line on the far side of each adjacent street. Appropriate methods for rooftop screening include:

- Freestanding screen wall
- Extended parapet wall
- Other similar technique

EXTERIOR MATERIAL LEGEND			
ST01 - STONE VENEER RANDOM ASHLAR PATTERN PRINCETON GRANITE NEWPORT GREY	GL01 - VISION GLAZING VIRACON VEI-2M CLEAR LITE	GAF501 - STOREFRONT, BOD: JRB 6" J650X, AMF01	AMF01 (ALUMINUM) PPG DURANAR UC105735 COCOA BEAN
FCB01 - WOOD GRAIN FIBER CEMENT BOARD NICHHA VINTAGEWOOD CEDAR	GL02 - SPANDREL GLAZING VIRACON VEI-2M CLEAR LITE	GAF502 - CURTAIN WALL, BOD: JRB 8 1/2" J301ST WITH 1 1/4" CAP, AMF01	AMF02 (STEEL) PPG DURANAR UC105735 COCOA BEAN
CP01 - CEMENT PLASTER FINISH STOGSIA NATURE WOOD-10 16066 (WARM BROWN)	SSMR01 - STANDING SEAM ROOFING SYSTEM BERRIDGE CEE-LOCK MEDIUM BRONZE		AMF03 (STEEL) PPG DURANAR UC105747 NATURAL WICKER
CP02 - CEMENT PLASTER FINISH STOUT 3 - MEDIUM 16040 (CREAM)			AMF04 (STEEL) PPG DURANAR UC105735 COCOA BEAN
			XPT01 MATCH ST01
			XPT02 MATCH CP01
			XPT03 MATCH CP02
			XPT04 MATCH FCB01

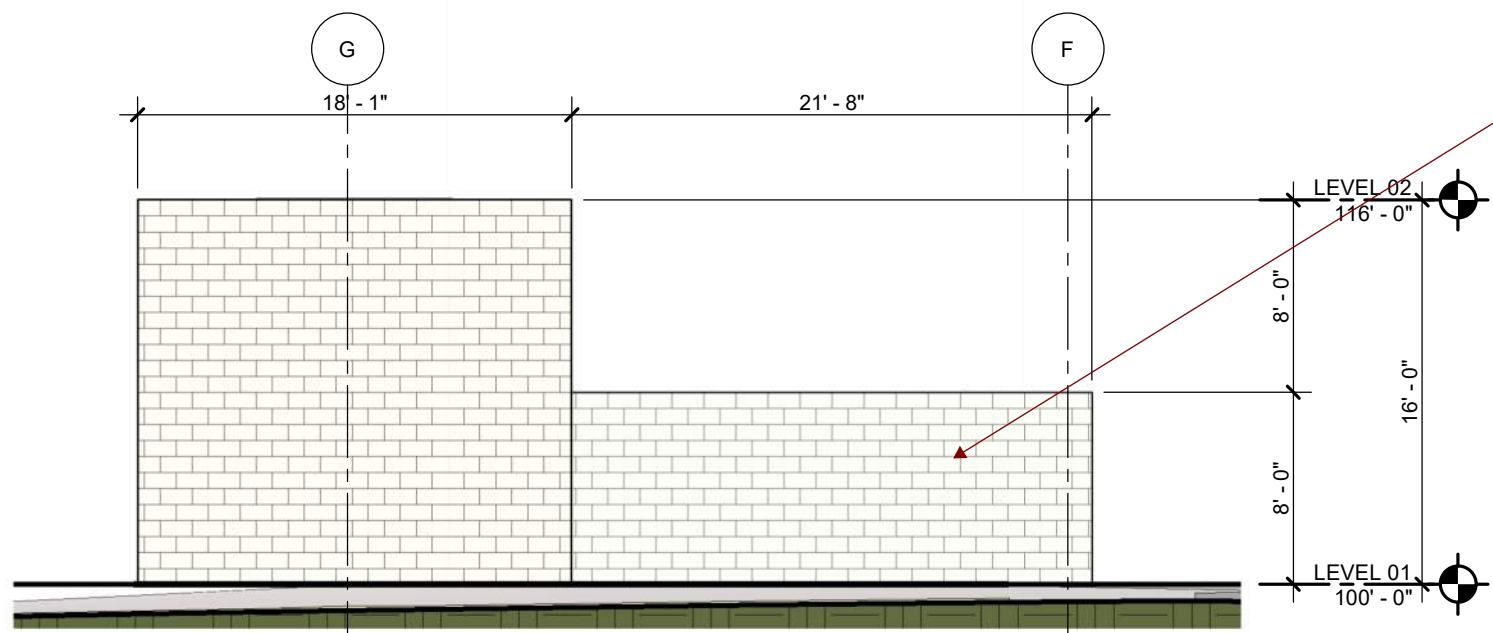
EXTERIOR MATERIAL LEGEND			
ST01 - STONE VENEER	CP01 - CEMENT PLASTER FINISH		
FCB01 - WOOD GRAIN FIBER CEMENT BOARD	CP02 - CEMENT PLASTER FINISH		
GL01 - VISION GLAZING	SSMR01 - STANDING SEAM ROOFING SYSTEM		
GL02 - SPANDREL GLAZING			



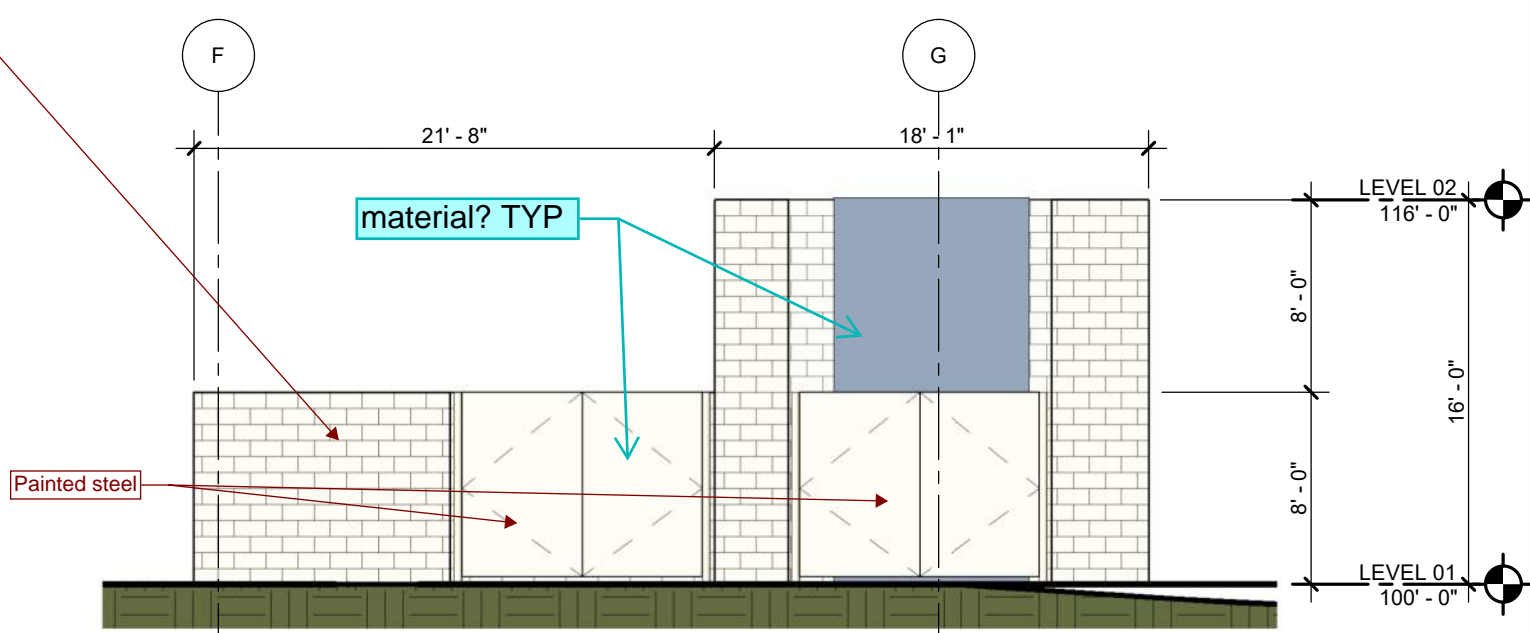
provide a materials board
colors in legend should match elevations better

EXTERIOR MATERIAL LEGEND			
REFER TO SECTION 010510			
ST01 - STONE VENEER RANDOM ASHLAR PATTERN PRINCETON GRANITE NEWPORT GREY	GL01 - VISION GLAZING VIRACON VE1-2M CLEAR LITE	GAFS01 - STOREFRONT, BOD: JRB 6" J550X, AMF01	AMF01 (ALUMINUM) PPG DURANAR UC105735 COCOA BEAN
FCB01 - WOOD GRAIN FIBER CEMENT BOARD NICHHA VINTAGEWOOD CEDAR	GL02 - SPANDREL GLAZING VIRACON VE1-2M CLEAR LITE	GAFS02 - CURTAIN WALL, BOD: JRB 6 1/2" J3015T WITH 1 1/4" CAP, AMF01	AMF02 (STEEL) PPG DURANAR UC105735 COCOA BEAN
CP01 - CEMENT PLASTER FINISH STOSIGNATURE WOOD-10 16006 (WARM BROWN)	SSMR01 - STANDING SEAM ROOFING SYSTEM BERRIDGE CEE-LOCK MEDIUM BRONZE	AMF03 (STEEL) PPG DURANAR UC105747 NATURAL WICKER	XPT01 MATCH ST01
CP02 - CEMENT PLASTER FINISH STOLIT X - MEDIUM 16940 (CREAM)		AMF04 (STEEL) PPG DURANAR UC105735 COCOA BEAN	XPT02 MATCH CP01
			XPT03 MATCH CP02
			XPT04 MATCH FCB01

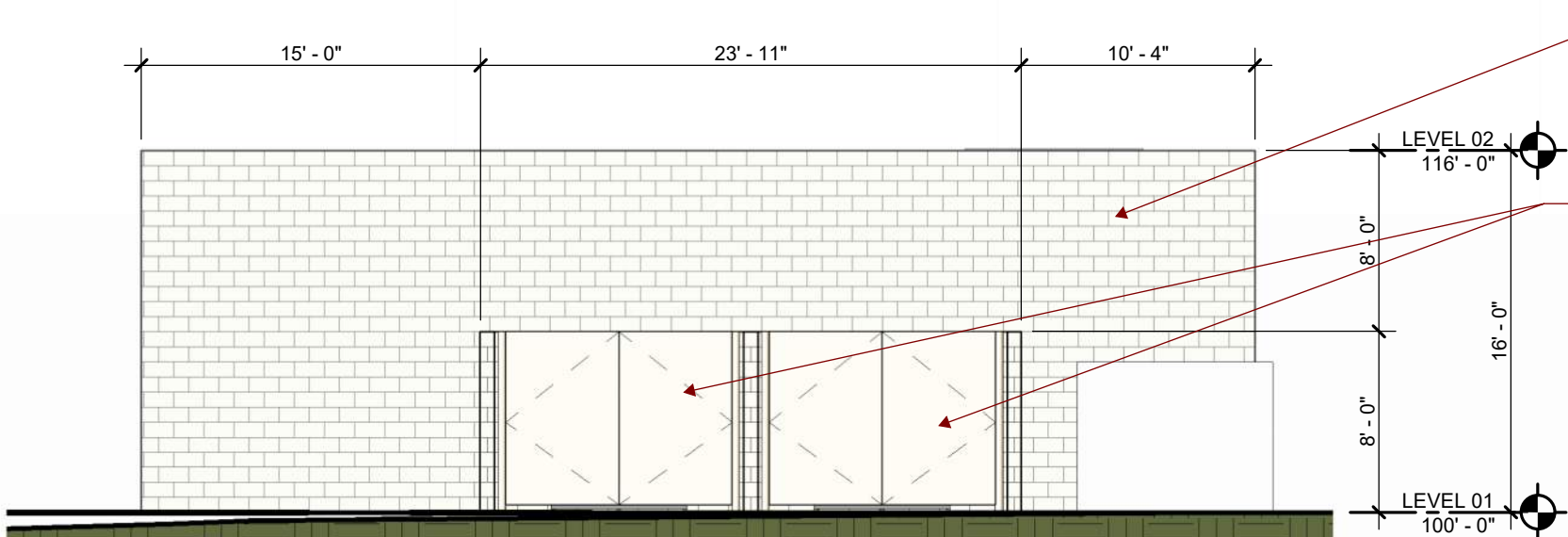
EXTERIOR MATERIAL LEGEND			
ST01 - STONE VENEER	CP01 - CEMENT PLASTER FINISH		
FCB01 - WOOD GRAIN FIBER CEMENT BOARD	CP02 - CEMENT PLASTER FINISH		
GL01 - VISION GLAZING	SSMR01 - STANDING SEAM ROOFING SYSTEM		
GL02 - SPANDREL GLAZING			



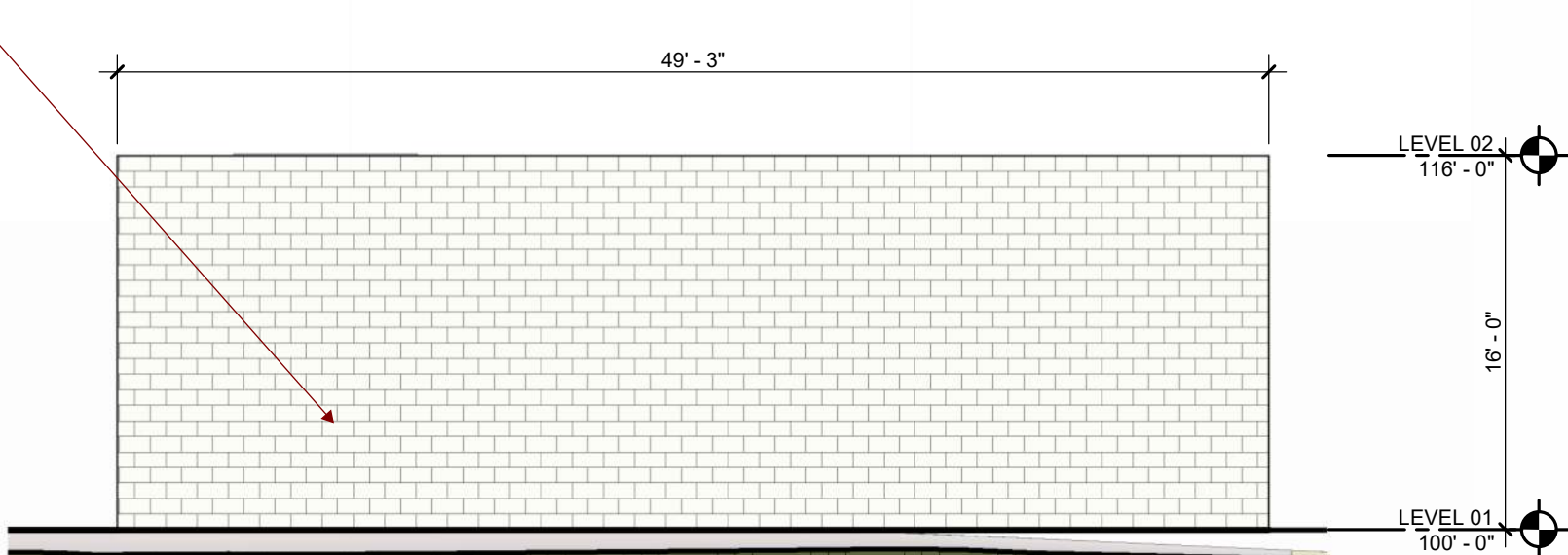
04 WEST TRASH/GENERATOR ENCLOSURE ELEVATION
1/8" = 1'-0"



02 EAST TRASH/GENERATOR ENCLOSURE ELEVATION
1/8" = 1'-0"



03 SOUTH TRASH/GENERATOR ENCLOSURE ELEVATION
1/8" = 1'-0"



01 NORTH TRASH/GENERATOR ENCLOSURE ELEVATION
1/8" = 1'-0"