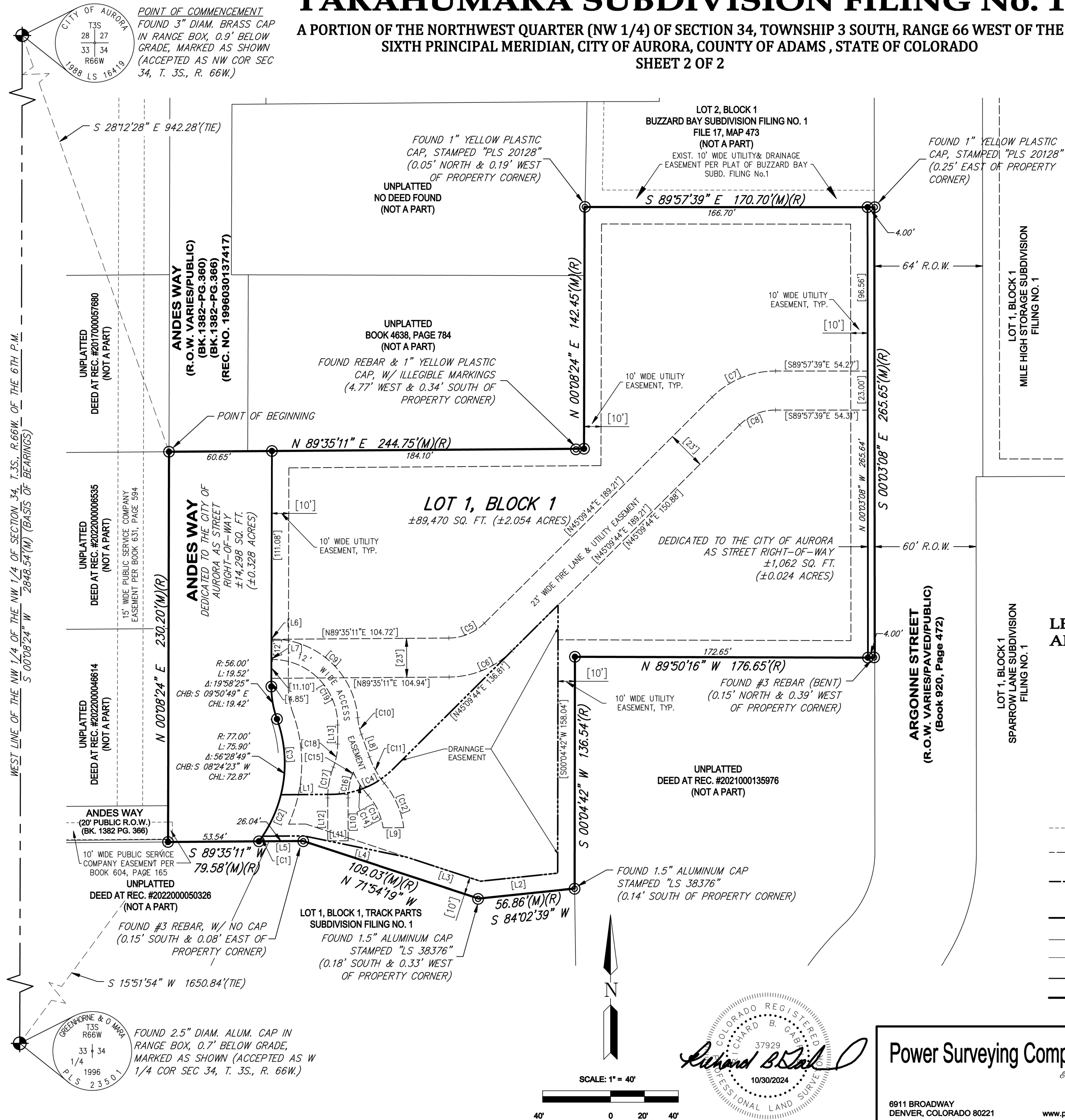


TARAHUMARA SUBDIVISION FILING No. 1

A PORTION OF THE NORTHWEST QUARTER (NW 1/4) OF SECTION 34, TOWNSHIP 3 SOUTH, RANGE 66 WEST OF THE SIXTH PRINCIPAL MERIDIAN, CITY OF AURORA, COUNTY OF ADAMS, STATE OF COLORADO
SHEET 2 OF 2



LINE TABLE (EASEMENTS)

LINE	BEARING	LENGTH
[L1]	N89°35'07"E	30.19'
[L2]	S84°02'39"W	45.73'
[L3]	N71°54'19"W	45.32'
[L4]	N78°20'30"W	62.45'
[L5]	S89°35'33"W	24.38'
[L6]	N89°51'36"W	0.65'
[L7]	S89°51'36"E	0.65'
[L8]	N19°44'48"W	14.17'
[L9]	N89°35'33"E	12.11'
[L10]	N00°04'52"W	25.24'
[L11]	N89°55'08"E	12.00'
[L12]	S00°04'52"E	25.23'
[L13]	S00°08'24"W	11.25'

CURVE TABLE (EASEMENTS)

CURVE	RADIUS	DELTA	LENGTH	CHORD BRG	CHORD LENGTH
[C1]	77.00'	2°45'04"	3.70'	N35°16'25"E	3.70'
[C2]	77.00'	20°00'09"	26.88'	N23°53'48"E	26.75'
[C3]	77.00'	33°43'45"	45.33'	N02°58'09"W	44.68'
[C4]	52.00'	44°25'23"	40.32'	N67°22'26"E	39.31'
[C5]	30.00'	44°25'27"	23.26'	N67°22'28"E	22.68'
[C6]	53.00'	44°25'27"	41.09'	N67°22'28"E	40.07'
[C7]	53.00'	44°52'37"	41.51'	S67°36'03"W	40.46'
[C8]	30.00'	44°52'37"	23.50'	S67°36'03"W	22.90'
[C9]	50.50'	85°07'16"	75.03'	N47°17'58"W	68.31'
[C10]	38.50'	15°00'28"	10.08'	S12°14'34"E	10.06'
[C11]	50.50'	20°22'02"	17.95'	S29°55'49"E	17.86'
[C12]	50.50'	32°51'03"	28.95'	N23°41'18"W	28.56'
[C13]	38.50'	32°09'47"	21.61'	N25°29'49"W	21.33'
[C14]	50.50'	18°24'27"	16.22'	S32°22'29"E	16.15'
[C15]	50.50'	1°39'09"	1.46'	N20°16'28"E	1.46'
[C16]	38.40'	21°16'30"	14.26'	S10°27'48"W	14.18'
[C17]	50.40'	21°05'30"	18.55'	S10°23'00"W	18.45'
[C18]	38.50'	20°47'22"	13.97'	N10°32'05"E	13.89'
[C19]	38.50'	90°00'00"	60.48'	N44°51'36"W	54.45'

LEGEND OF SYMBOLS AND ABBREVIATIONS

	SECTION CORNER AS NOTED
	SET 18" LONG #5 REBAR & 1.25" YELLOW PLASTIC CAP OR 1" BRASS TAG & NAIL, STAMPED "PLS 37929" UNLESS NOTED OTHERWISE
	MONUMENT FOUND, AS NOTED
(C)	CALCULATED
(M)	MEASURED
(R)	RECORD
---	EXISTING RECORD EASEMENT LINE
- - - - -	EASEMENT GRANTED PER THIS PLAT (DIMENSIONED IN [] BRACKETS)
- . - . -	DRAINAGE EASEMENT GRANTED PER THIS PLAT (DIMENSIONED IN [] BRACKETS)
---	PLAT BOUNDARY LIMITS TO BE DEDICATED
---	ADJOINING PARCEL OR LOT LINE
---	CENTER LINE
---	PUBLIC LANDS SURVEY SECTION LINE
---	SUBJECT PROPERTY BOUNDARY

TYPE OF SUBMITTAL:	MINOR SUBDIVISION PLAT
PREPARATION DATE:	MARCH 2, 2023
REVISION DATE:	SEPTEMBER 6, 2023
REVISION DATE:	
DRAWN BY: MB	APPROVED BY: FZ
JOB NO. 501-23-021	DWG: 501-23-021.dwg

SHEET 2 OF 2

Power Surveying Company, Inc.

6911 BROADWAY
DENVER, COLORADO 80221

PH. 303-702-1617
FAX. 303-702-1488
www.powersurveying.com

