

KEYNOTES	
NO.	DESCRIPTION
901	THROUGH WALL OVERFLOW DRAIN.
908	SEALANT COLOR TO MATCH ALUMINUM STOREFRONT FRAME SYSTEM.
909	DISTRACTION DECAL (BY SIGN VENDOR).
910	SIGN BY BANK VENDOR. REFER TO VENDOR DRAWINGS FOR FURTHER INFORMATION.
912	END OF METAL PANEL.
913	STAINLESS STEEL FLASHING. FINISH SHALL MATCH FINISH OF METAL PANEL ABOVE.
914	RTU SCREEN.



AURORA PLAZA

15241 E MISSISSIPPI AVE
AURORA, CO 80012

SERIAL NUM./MANH. ID: C01-152
VERSION: 2.0
BULLETIN: Q2-2024

EXTERIOR FINISH SCHEDULE

ALUMINUM GLAZING FRAME	
AF-2	ALUMINUM STOREFRONT SYSTEM. COLOR: CLEAR ANODIZED ALUMINUM FINISH
GLAZING	
GL-2	1" CLEAR TEMPERED INSULATED GLAZING AS SPECIFIED
STUCCO/PLASTER	
PT-3	PAREX USA PREMIER STUCCO - PAREX ARMOURWALL 3000 STUCCO ASSEMBLY. COLOR: BENJAMIN MOORE CHARCOAL SLATE FLAT
STUCCO ACCESSORIES	
(PAINTED TO MATCH STUCCO)	
SA-2	NARROW CHANNEL SCREED AS SPECIFIED. PAINTED TO MATCH STUCCO FINISH COLOR
EXTERIOR CLADDING SYSTEM	
EPS-1	CITADEL ENVELOPE 2000 RAINSCREEN (RS). FINISH: CITADEL CLEAR ANODIZED SATIN
EPS-3	CITADEL ENVELOPE 2000 RAINSCREEN (RS). FINISH: CITADEL ARCTIC WHITE SATIN
EPS-5	PURE-FREEFORM HORIZONTAL FLUSH WALL METAL PANEL SYSTEM. FINISH: ROMA NOCE #SN043 SATIN
FLASHING BASE	
SS-1	BRAKE METAL BASE AT PT-3 COLOR SHALL MATCH WALL FINISH PER SAMPLE
SS-2	BRAKE METAL BASE AT EPS-3/EPS-3A COLOR SHALL MATCH WALL FINISH PER SAMPLE
SS-3	BRAKE METAL BASE AT EPS-5 COLOR SHALL MATCH WALL FINISH PER SAMPLE
EXTERIOR PAINT	
(PAINTED TO MATCH STUCCO)	
EXPT-17	BENJAMIN MOORE CHARCOAL SLATE FLAT
EXTERIOR SEALANT COLOR	
GLAZING AT STOREFRONT	BLACK
METAL PANEL/SIDING TO METAL PANEL/ SIDING	MATCH CLIP
WINDOW FRAME/ STOREFRONT TO STUCCO	MATCH FRAME
METAL PANEL/SIDING TO STUCCO	MATCH STUCCO
METAL PANEL/SIDING TO STOREFRONT	MATCH FRAME

NOT FOR
CONSTRUCTION

5	ISSUED FOR CD 90% REVIEW	11.01.2024
4	ISSUED FOR DD FINAL	07.10.2024
3	ISSUED FOR DD 90% REVIEW	06.24.2024
2	ISSUED FOR COE REVIEW	04.26.2024
1	ISSUED FOR SD FINAL	04.23.2024

DELTA	ISSUE	DESCRIPTION	DATE
-------	-------	-------------	------



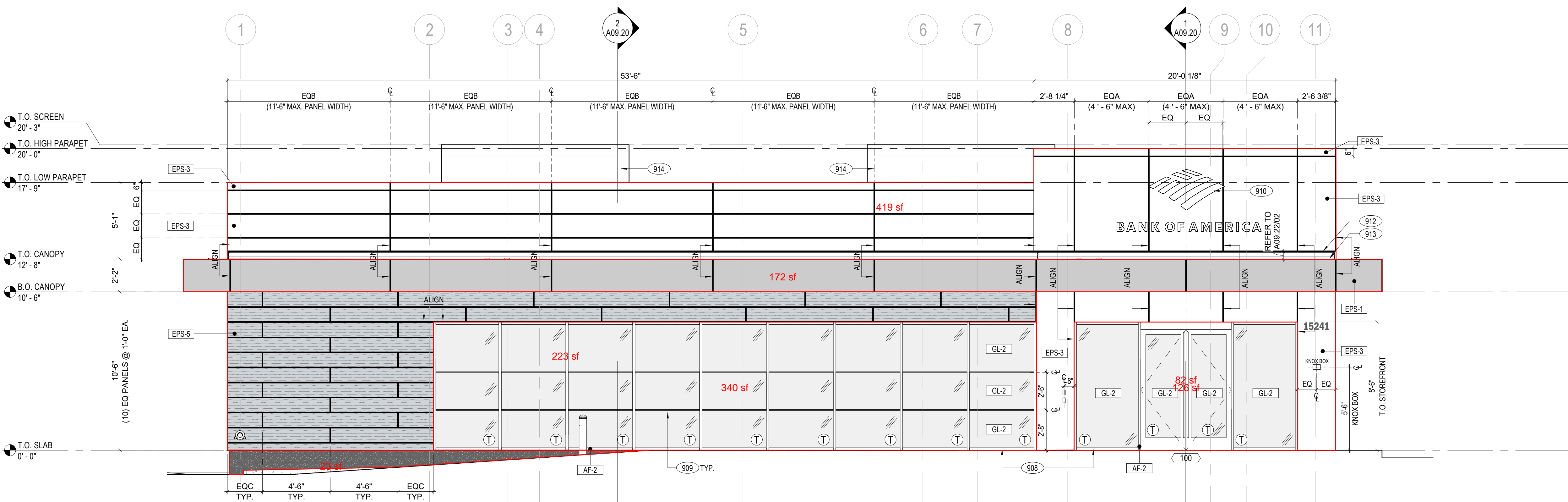
DENVER
175 15TH ST. 3RD FLOOR
DENVER, CO 80202
TEL 303-672-8500

© 2024 INTERIOR ARCHITECTS, P.C., A NEW YORK PROFESSIONAL SERVICES CORPORATION.
ALL DRAWINGS AND WRITTEN MATERIAL HEREIN CONSTITUTE THE ORIGINAL AND UNPUBLISHED
WORK OF THE ARCHITECT. AND THE SAME MAY NOT BE DUPLICATED, USED, OR DISCLOSED
WITHOUT THE WRITTEN CONSENT OF THE ARCHITECT.

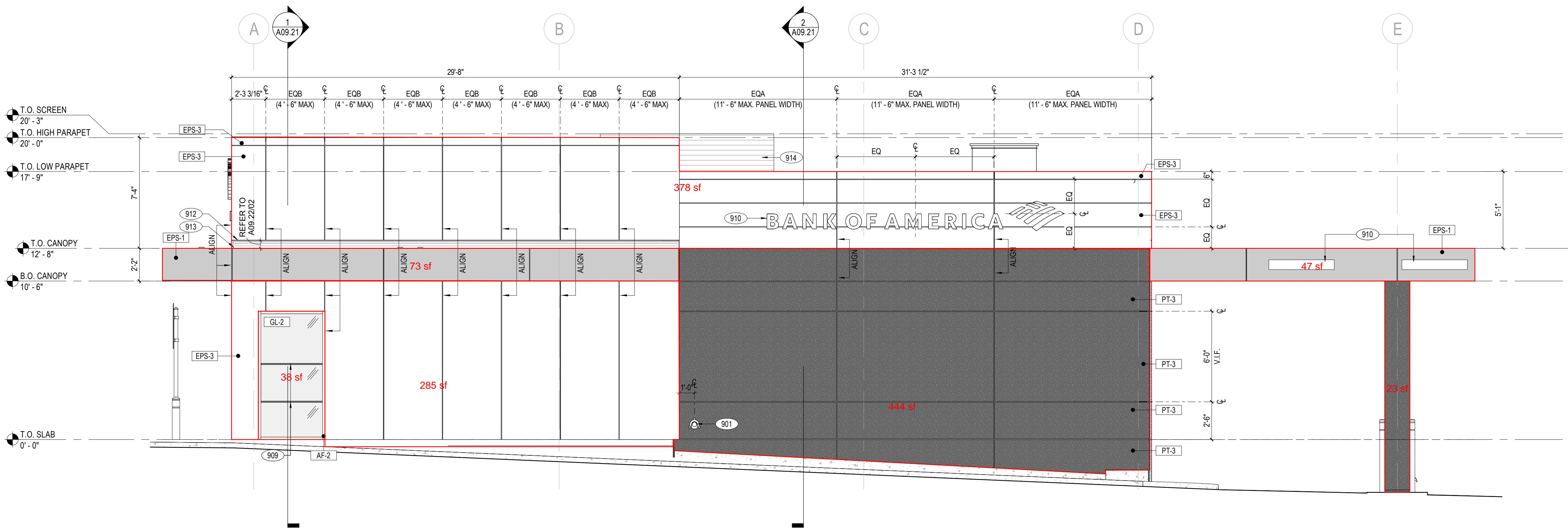
Owner Approval	
47BACK.1104.032	As indicated
Job No.	Scale

EXTERIOR ELEVATIONS

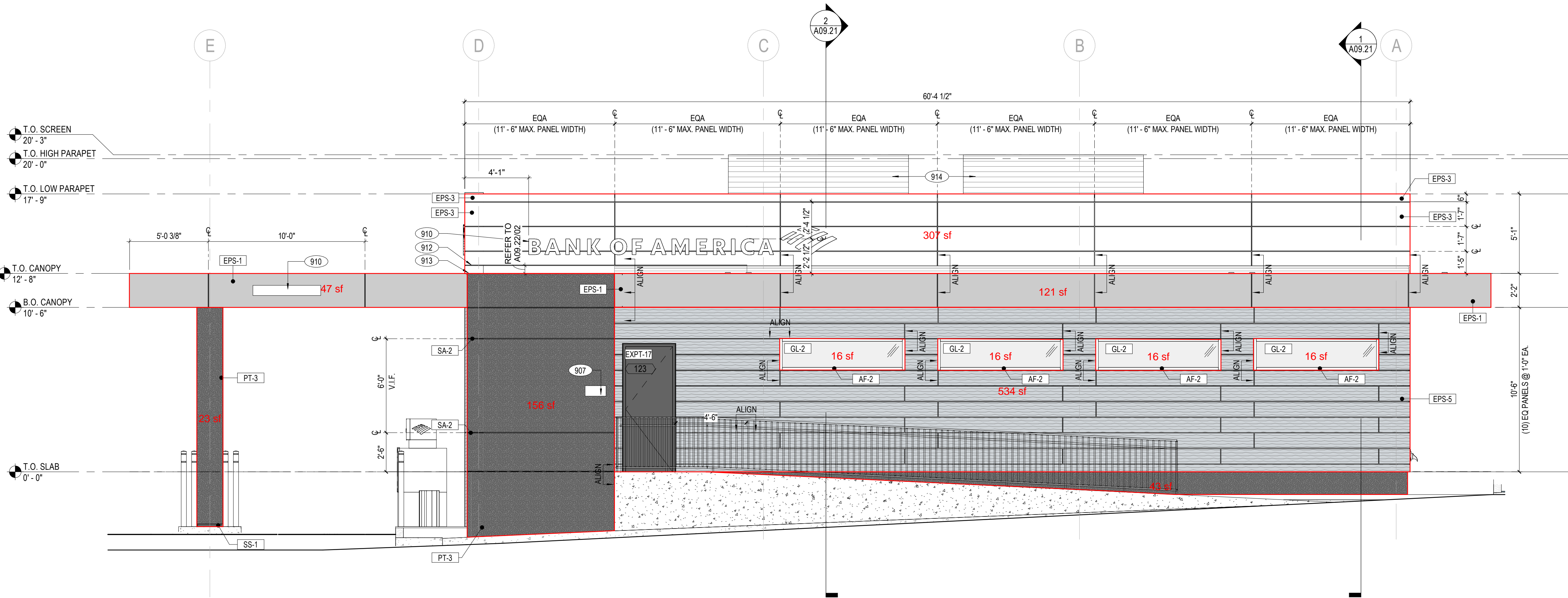
A09.11



1 EXTERIOR ELEVATION - WEST (PRIMARY ELEVATION)	
1/4" = 1'-0"	
MATERIAL CALCULATIONS:	
EPS-1	172 SF = 12.4%
EPS-3	501 SF = 36.2%
EPS-5	223 SF = 16.1%
GLAZING	466 SF = 33.7%
STUCCO	23 SF = 1.6%
TOTAL	1385 SF

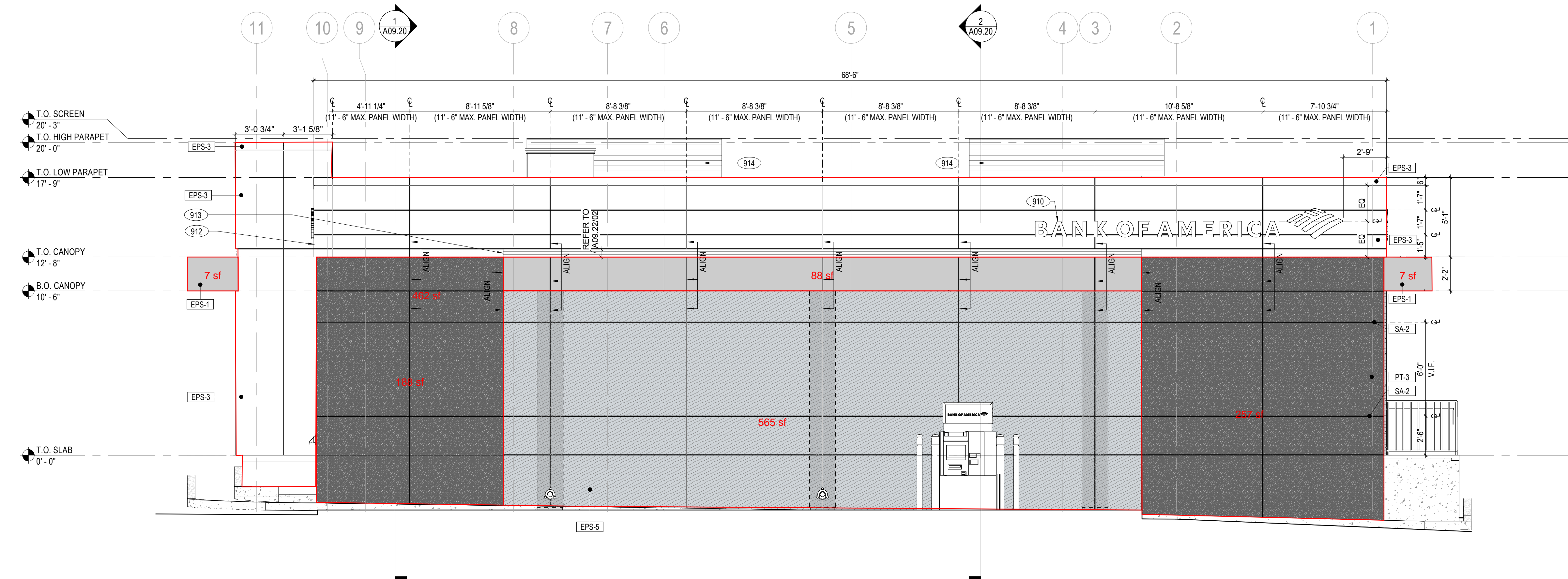


2 EXTERIOR ELEVATION - SOUTH (PRIMARY ELEVATION)	
1/4" = 1'-0"	
MATERIAL CALCULATIONS:	
EPS-1	120 SF = 9.3%
EPS-3	663 SF = 51.5%
EPS-5	0 SF = 0.0%
GLAZING	38 SF = 2.9%
STUCCO (PT-3)	467 SF = 36.3%
TOTAL	1288 SF



1 EXTERIOR ELEVATION - NORTH
1/4" = 1'-0"

MATERIAL CALCULATIONS:	
EPS-1	168 SF = 13.6%
EPS-3	307 SF = 25.0%
EPS-5	470 SF = 38.2%
GLAZING	64 SF = 5.2%
STUCCO	222 SF = 18.0%
TOTAL	1231 SF



2 EXTERIOR ELEVATION - EAST
1/4" = 1'-0"

MATERIAL CALCULATIONS:	
EPS-1	102 SF = 6.5%
EPS-3	462 SF = 29.4%
EPS-5	565 SF = 35.8%
GLAZING	0 SF = 0.0%
STUCCO	445 SF = 28.3%
TOTAL	1574 SF

KEYNOTES

NO.	DESCRIPTION
907	NO SMOKING SIGN
907	SIGN BY BANK VENDOR. REFER TO VENDOR DRAWINGS FOR FURTHER INFORMATION.
912	END OF METAL PANEL
913	STAINLESS STEEL FLASHING. FINISH SHALL MATCH FINISH OF METAL PANEL ABOVE.
914	RTU SCREEN

EXTERIOR FINISH SCHEDULE

ALUMINUM GLAZING FRAME

AF-2	ALUMINUM STOREFRONT SYSTEM. COLOR: CLEAR ANODIZED ALUMINUM FINISH
------	---

GLAZING

GL-2	1" CLEAR TEMPERED INSULATED GLAZING AS SPECIFIED
------	--

STUCCO/PLASTER

PT-3	PARTEX USA PREMIER STUCCO - PARTEX ARMOURWALL 3000 STUCCO ASSEMBLY. COLOR: BENJAMIN MOORE CHARCOAL SLATE FLAT
------	---

STUCCO ACCESSORIES

(PAINTED TO MATCH STUCCO)	
---------------------------	--

SA-2	NARROW CHANNEL SCREED AS SPECIFIED. PAINTED TO MATCH STUCCO FINISH COLOR
------	--

EXTERIOR CLADDING SYSTEM

EPS-1	CITADEL ENVELOPE 2000 RAINSCREEN (RS). FINISH: CITADEL CLEAR ANODIZED SATIN
EPS-3	CITADEL ENVELOPE 2000 RAINSCREEN (RS). FINISH: CITADEL ARCTIC WHITE SATIN
EPS-5	PURE-FREEFORM HORIZONTAL FLUSH WALL METAL PANEL SYSTEM. FINISH: ROMA NOCE #SN043 SATIN

FLASHING BASE

SS-1	BRAKE METAL BASE AT PT-3 COLOR SHALL MATCH WALL FINISH PER SAMPLE
SS-2	BRAKE METAL BASE AT EPS-3/EPS-3A COLOR SHALL MATCH WALL FINISH PER SAMPLE
SS-3	BRAKE METAL BASE AT EPS-5 COLOR SHALL MATCH WALL FINISH PER SAMPLE

EXTERIOR PAINT

(PAINTED TO MATCH STUCCO)	
---------------------------	--

EXP1-17	BENJAMIN MOORE CHARCOAL SLATE FLAT
---------	------------------------------------

EXTERIOR SEALANT COLOR

GLAZING AT STOREFRONT	BLACK
METAL PANELS/DIODE TO METAL PANEL/DIODE	MATCH CLIP
WINDOW FRAME/ STOREFRONT TO STUCCO	MATCH FRAME
METAL PANELS/DIODE TO STUCCO	MATCH STUCCO
METAL PANELS/DIODE TO STOREFRONT	MATCH FRAME

BANK OF AMERICA

AURORA PLAZA

15241 E MISSISSIPPI AVE
AURORA, CO 80012

SERIAL NUM./MANH. ID: C01-152
VERSION: 2.0
BULLETIN: Q2-2024

NOT FOR
CONSTRUCTION

5	ISSUED FOR CD 90% REVIEW	11.01.2024
4	ISSUED FOR DD FINAL	07.10.2024
3	ISSUED FOR DD 90% REVIEW	06.24.2024
2	ISSUED FOR COE REVIEW	04.26.2024
1	ISSUED FOR SD FINAL	04.23.2024

DELTA	ISSUE	DESCRIPTION	DATE
-------	-------	-------------	------

IA INTERIOR ARCHITECTS

DENVER
175 15TH ST. 3RD FLOOR
DENVER, CO 80202
TEL 303-672-8500

© 2024 INTERIOR ARCHITECTS, P.C., A NEW YORK PROFESSIONAL SERVICES CORPORATION. ALL DRAWINGS AND WRITTEN MATERIAL HEREIN CONSTITUTE THE ORIGINAL AND UNPUBLISHED WORK OF THE ARCHITECT. AND THIS SAME MAY NOT BE DUPLICATED, USED, OR DISCLOSED WITHOUT THE WRITTEN CONSENT OF THE ARCHITECT.

Owner Approval	
478ACX.1104.032	As indicated
Job No.	Scale

EXTERIOR ELEVATIONS

A09.12