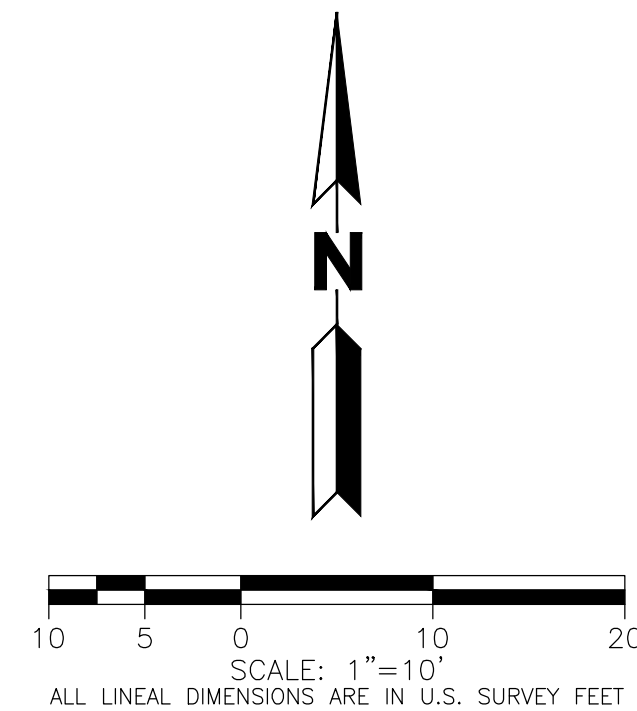




1. ALL PRIVATE STORM SEWER IS SIZED FOR THE 100-YEAR EVENT, UNLESS OTHERWISE NOTED.
2. ALL PROPOSED STORM DRAINAGE FEATURES (INLETS, STORM SEWER, ETC) ARE PRIVATE AND WILL BE MAINTAINED BY THE OWNER (ECLT BLACKHAWK COMMONS LLC) IN PERPETUITY.
3. ONE DRAINAGE EASEMENT WILL BE PROVIDED THAT ENCOMPASSES ALL PROPOSED RAIN GARDENS AND THE EXTENTS OF THE 100-YEAR DETENTION AREA FOR BOTH PROPOSED DETENTION AREAS.


LEGEND

<i>EXISTING</i>		<i>PROPOSED</i>
	PROPERTY LINE	
	RIGHT-OF-WAY LINE	
	SECTION LINE	
	EASEMENT	
	RETAINING WALL	
	CURB & GUTTER	
	CURB & GUTTER (CATCH)	
	CURB & GUTTER (SPILL)	
- - - - -ST- - - - - 	STORM SEWER	ST
- - - - -RD- - - - - 	STORM MANHOLE	
	ROOF DRAIN	RD
	STORM INLET	
<i>DRIVE</i>	DESCRIPTIONS	DRIVE
	RAIN GARDEN	
	100-YEAR PONDING EXTENTS	
	10-YEAR PONDING EXTENTS	
	CONCRETE PAVEMENT	
	ASPHALT PAVEMENT	
	BASIN BOUNDARY	
	SUB-BASIN BOUNDARY	
	DIRECTION OF OVERFLOW ROUTE	
	DESIGN POINT	
 60 FEET		
	BASIN	
	AREA IN ACRES	

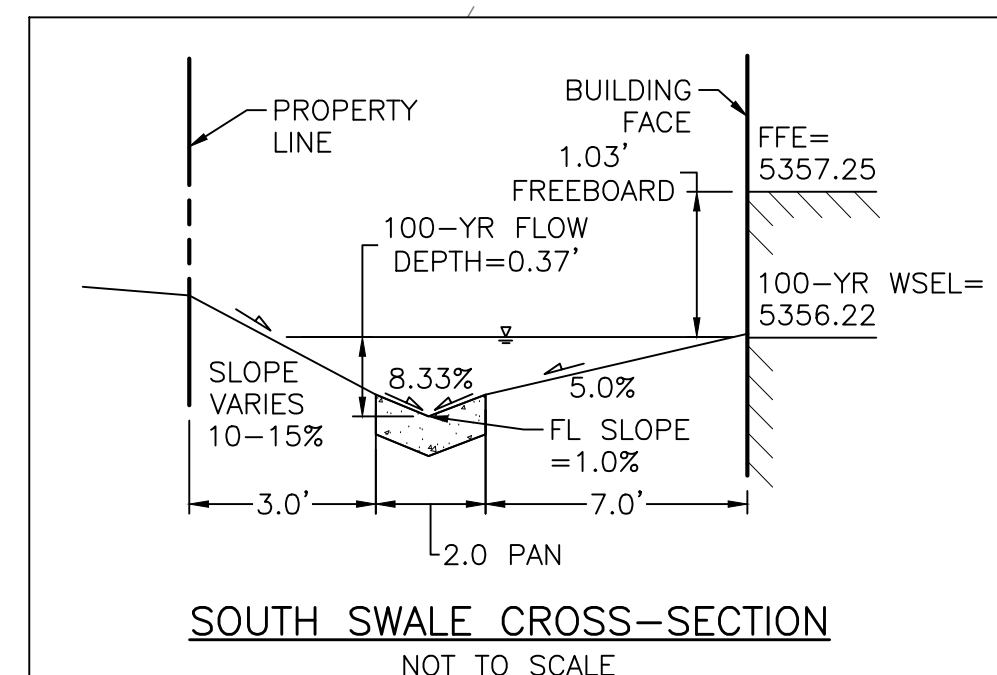


THE PROJECT SITE IS
CONTAINED WITHIN ZONE 'X',
0.2% ANNUAL CHANCE
FLOOD HAZARD AREA.

	PARKING LOT	COURTYARD
BASIN AREA	0.29 ACRES	0.25 ACRES
BASIN IMPERVIOUSNESS	80.2%	37.6%
WQCV	333 FT ³	123 FT ³
10-YEAR VOL.	938 FT ³	368 FT ³
10-YEAR RELEASE RATE	0.057 FT ³ /S	0.028 FT ³ /S
10-YEAR WSEL	5354.80 FT	5354.15 FT
100-YEAR VOL.	1,773 FT ³	733 FT ³
100-YEAR RELEASE RATE	0.237 FT ³ /S	0.163 FT ³ /S
100-YEAR WSEL	5354.91 FT	5354.56 FT
FREEBOARD FROM FFE*	1.84 FT	2.19 FT
MAXIMUM PONDING DEPTH	1.57 FT	1.47 FT

RAIN GARDEN SUMMARY TABLE				
	A1	A2	A3	B1
BASIN AREA	0.10 ACRES	0.07 ACRES	0.04 ACRES	0.29 ACRES
BASIN IMPERVIOUSNESS	28.0%	42.7%	43.7%	80.2%
WQCV	51 FT³	46 FT³	26 FT³	287 FT³
RELEASE RATE	0.002 FT³/S	0.001 FT³/S	0.001 FT³/S	0.006 FT³/S
WQCV WSEL	5353.65 FT	5353.73 FT	5355.08 FT	5354.51 FT
FREEBOARD FROM FFE*	3.10 FT	3.02 FT	2.17 FT	2.74 FT

*LOWEST ADJACENT FINISHED FLOOR ELEVATION WAS USED FOR FREEBOARDS SHOWN.



CITY OF AURORA APPROVAL BLOCK

CITY OF AURORA PLAN REVIEW IS ONLY FOR GENERAL CONFORMANCE WITH CITY OF AURORA DESIGN CRITERIA AND CITY CODE. THE CITY IS NOT RESPONSIBLE FOR THE ACCURACY AND ADEQUACY OF THE DESIGN, OF DIMENSIONS AND ELEVATIONS WHICH SHALL BE CONFIRMED AND CORRELATED AT THE JOB SITE. THE CITY OF AURORA, THROUGH THE APPROVAL OF THIS DOCUMENT, ASSUMES NO RESPONSIBILITY FOR THE COMPLETENESS AND/OR ACCURACY OF THIS DOCUMENT.

BASIN	AREA (ACRES)	% IMP.	DESIGN POINT	Q ₁₀ (CFS)	Q ₁₀₀ (CFS)	ROUTED Q ₁₀ (CFS)	ROUTED Q ₁₀₀ (CFS)	ROUTING NOTES
A1	0.10	28.0	A1	0.19	0.32			
A2	0.07	42.2	A2	0.20	0.33			
A3	0.04	43.7	A3	0.10	0.17			
A4	0.04	46.1	A4	0.10	0.18	0.59	1.00	A1+A1+A3+A4
B1	0.25	80.2	B1	1.03	1.71	1.19	1.98	OS2+B1
C1	0.02	2.0	C1	0.01	0.03			
C2	0.03	2.0	C2	0.02	0.04			
C3	0.01	2.0	C3	0.01	0.01			
D1	0.05	2.0	D1	0.04	0.07	2.33	3.91	OS1+D1
OS1	0.50	92.2	OS1	2.29	3.84			
OS2	0.04	80.4	OS2	0.16	0.27			

AMENDMENT NOTES:

1. MA #2019-4019-01: DECK REDUCTION FOR HOUSE A AND B AND SIDEWALK EXPANSION TO DECKS. FACADE MODIFICATIONS FOR HOUSE B AND REMOVAL OF TRELLIS ON HOUSE A. NEW FLOOR PLAN FOR HOUSE D.

BASIS OF BEARING

BEARINGS ARE BASED ON THE CITY OF AURORA NAD83 STATE PLANE
COORDINATE SYSTEM (ZONE 502) BEARING OF N0°04'03"E ALONG THE
WESTERLY LINE OF THE NORTHWEST QUARTER OF SECTION 36, T3S, R67 W OF
THE 6TH P.M. BEING MONUMENTED BY A FOUND 3" BRASS CAP PLS #16419
IN RANGE BOX AT THE NORTHWEST CORNER AND A FOUND 3" BRASS CAP PLS
#16419 IN RANGE BOX AT THE WEST QUARTER CORNER.

BENCHMARK

ELEVATION ARE BASED ON A THE CITY OF AURORA BENCHMARK NUMBER 356631SW003, A CHISELED SQUARE ON AN INLET AT THE NORTHWEST CORNER OF THE INTERSECTION OF SABLE BLVD AND EVERGREEN ST.
ELEVATION = 5372.42 (NAVD88)



CALL **811** 2-BUSINESS DAYS IN ADVANCE
BEFORE YOU DIG, GRADE OR EXCAVATE FOR
MARKING OF UNDERGROUND MEMBER UTILITIES

MARTIN/MARTIN ASSUMES NO RESPONSIBILITY FOR UTILITY LOCATIONS. THE UTILITIES SHOWN ON THIS DRAWING HAVE BEEN PLOTTED FROM (PROVIDED) ASCE (38) UTILITY QUALITY LEVEL D (Q_{UD}) AVAILABLE INFORMATION. IT IS, HOWEVER, THE CONTRACTORS RESPONSIBILITY TO FIELD VERIFY THE SIZE, MATERIAL, HORIZONTAL AND VERTICAL LOCATION OF ALL UTILITIES (DEPICTED OR NOT DEPICTED) PRIOR TO THE COMMENCEMENT OF ANY CONSTRUCTION.