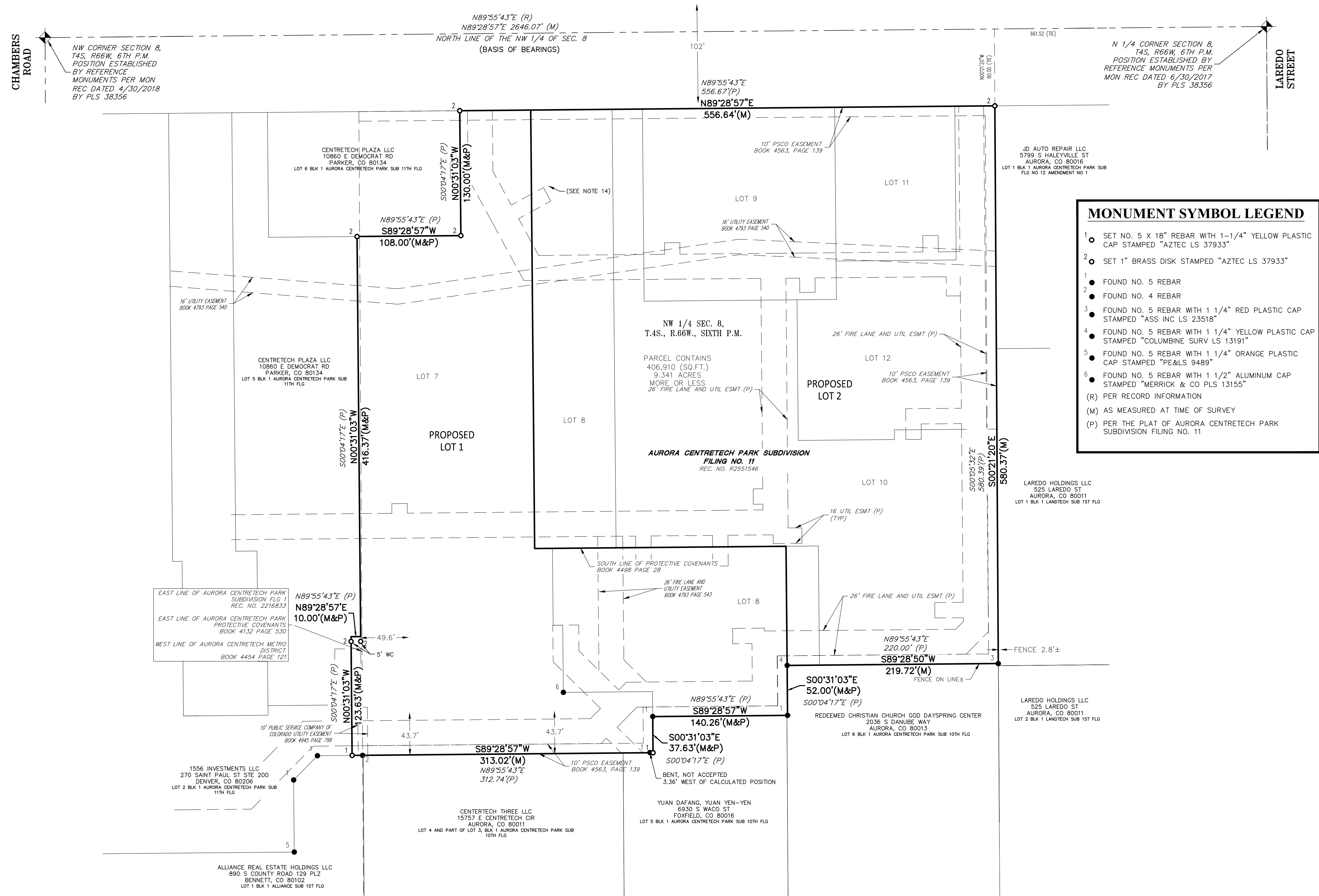


ALTA/NSPS LAND TITLE SURVEY
A PARCEL LOCATED IN THE NORTHWEST QUARTER OF SECTION 8,
TOWNSHIP 4 SOUTH, RANGE 66 WEST OF THE SIXTH PRINCIPAL MERIDIAN,
CITY OF AURORA, COUNTY OF ARAPAHOE, STATE OF COLORADO

[illegible]

AZTEC
CONSULTANTS, INC.

300 East Mineral Ave., Suite
Littleton, Colorado 80122
Phone: (303) 713-1898
Fax: (303) 713-1897
www.aztecconsultants.com

ALIA/NSPS LAND TITLE SURVEY
15660 EAST 6TH AVENUE
AURORA, COLORADO

PREPARED FOR
COMMUNITY DEVELOPMENT PARTNERS
3416 VIA OPORTO, STE. 301, NEWPORT BEACH, CA 92663

SHEET
TWO
OF 2 SHEETS
178422-01
JOB NO.

FOR REVIEW

FOR AND ON BEHALF OF
AZTEC CONSULTANTS, INC