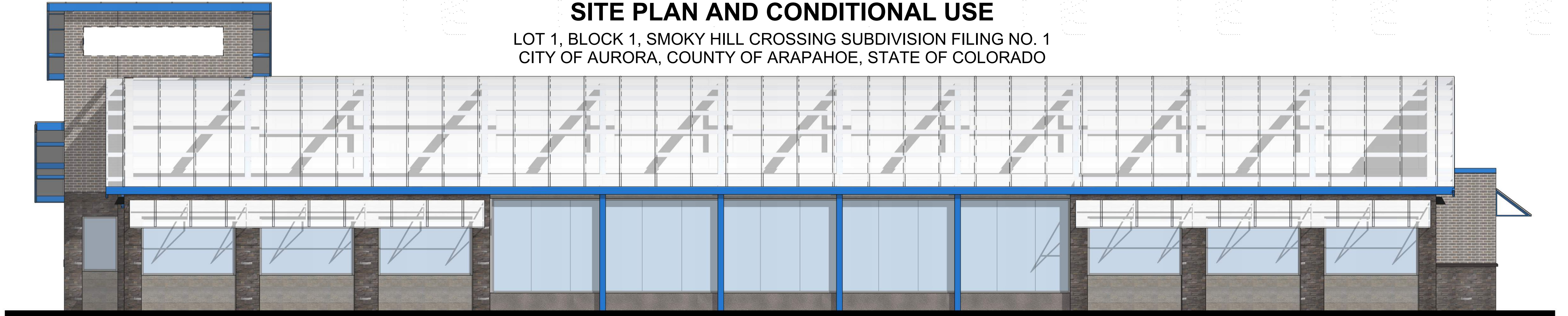


LIVING WATER AT SMOKY HILL CROSSING

SITE PLAN AND CONDITIONAL USE

LOT 1, BLOCK 1, SMOKY HILL CROSSING SUBDIVISION FILING NO. 1
CITY OF AURORA, COUNTY OF ARAPAHOE, STATE OF COLORADO



1 ELEVATION - NORTH
13 OF 12 1/4" = 1'-0"



2 ELEVATION SOUTH
13 OF 12 1/4" = 1'-0"



3 ELEVATION - EAST
13 OF 12 1/4" = 1'-0"



4 ELEVATION - WEST
13 OF 12 1/4" = 1'-0"

DATE: 07.30.2020
SCALE: 1/4" = 1'-0"
DRAWN BY: ALW
CHECKED BY: PEW

H O V E R
ARCHITECTURE
8930 BARRONS BLVD, SUITE 102
HIGHLANDS RANCH, CO 80129
(720) 770-9800

COPYRIGHT NOTICE
THESE PLANS ARE AN INSTRUMENT OF SERVICE AND ARE THE PROPERTY OF H O V E R ARCHITECTURE. AND MAY NOT BE DUPLICATED, DISCLOSED, OR REPRODUCED WITHOUT THE WRITTEN CONSENT OF H O V E R ARCHITECTURE. COPYRIGHTS AND INFRINGEMENTS WILL BE ENFORCED AND PROSECUTED.

PROJECT NUMBER
0202.24

SHEET
13 OF 12

COLOR
ELEVATIONS