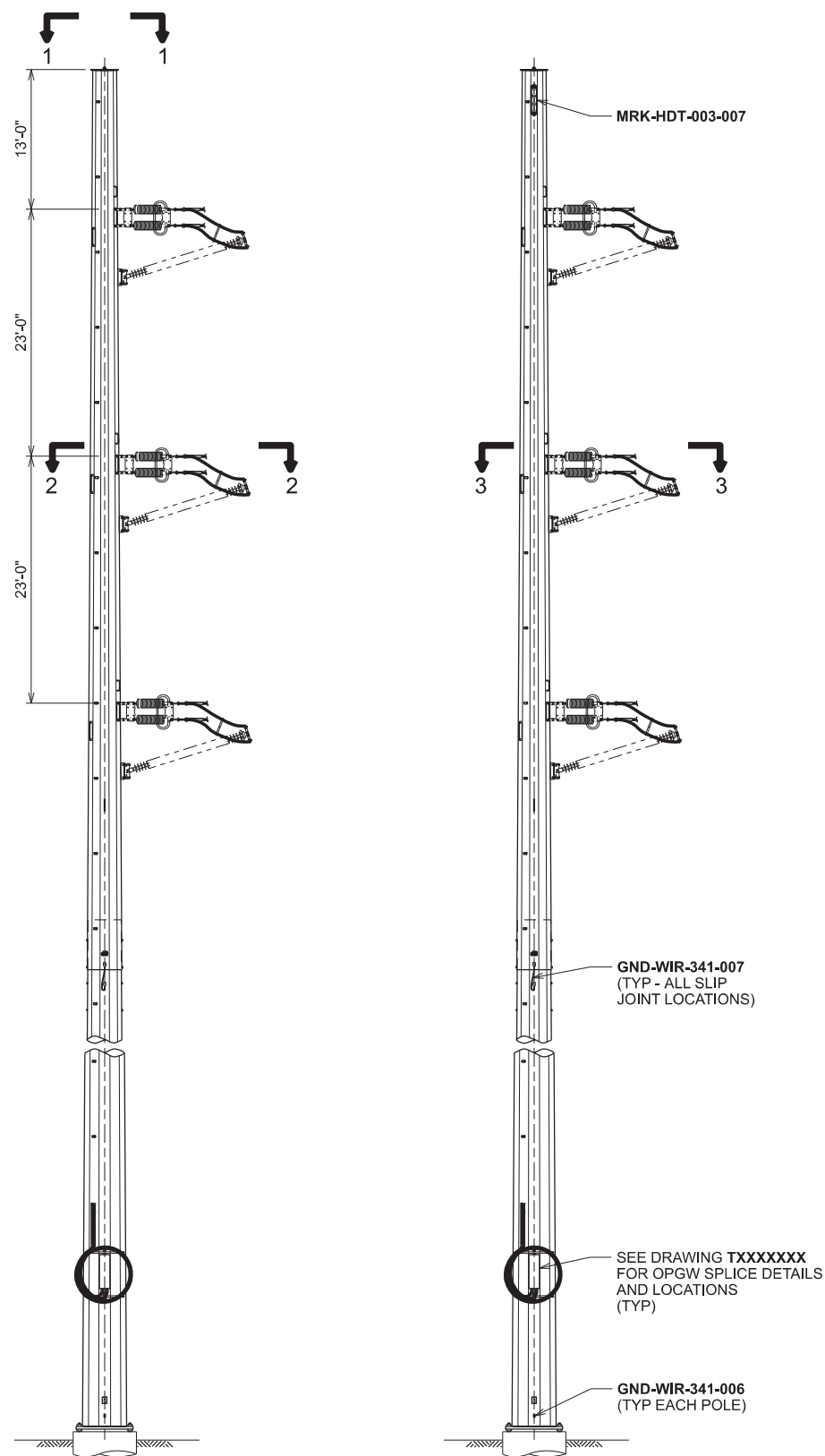
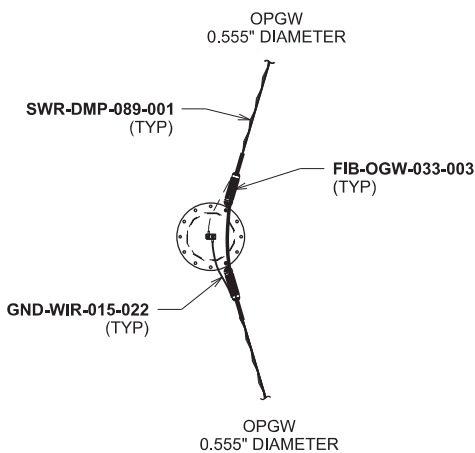


ATTACHMENT D: TYPICAL POLE CONFIGURATIONS, REPRESENTATIVE PHOTOGRAPH, AND VISUAL SIMULATION

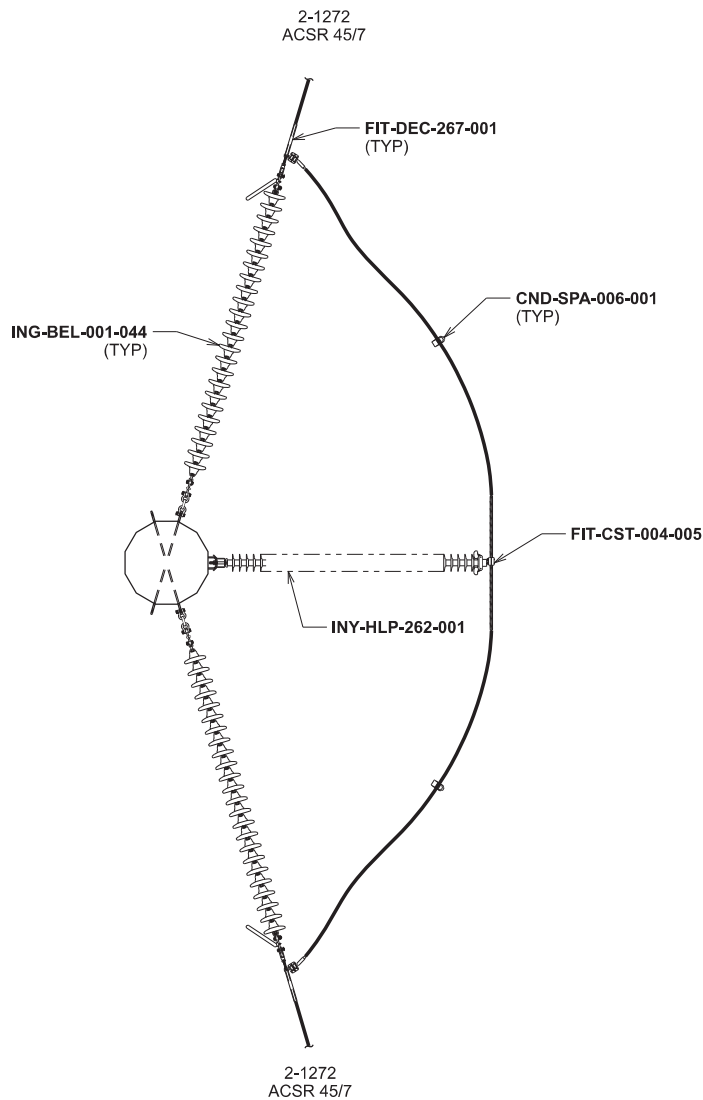
D1: Typical Transmission Pole Configuration



ELEVATION VIEW
SCALE: 1/16" = 1'-0"

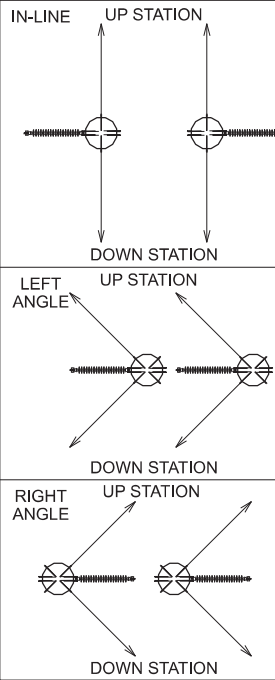


SECTION 1-1
OPGW SHIELD WIRE
SCALE: NONE
(TYPICAL BOTH POLES)



SECTION 2-2
CONDUCTOR
SCALE: NONE
(TYPICAL BOTH POLES)

JUMPER POST ORIENTATION



ASSEMBLY STR SWDBHLZ1-P1 FOR STEEL POLES LD T366C007	
QTY	SUBASSEMBLIES
12	CND-SPA-006-001
4	FIB-OGW-033-003
3	FIT-CST-004-005
12	FIT-DEC-267-001
3	GND-WIR-015-022
2	GND-WIR-341-006
4	GND-WIR-341-007
6	ING-BEL-001-044
3	INY-HLP-262-001
1	MRK-HDT-003-007
4	SWR-DMP-089-001

ASSEMBLY STR SWDBHLZ1-P2	
QTY	SUBASSEMBLIES
3	FIT-CST-004-005
12	FIT-DEC-267-001
6	ING-BEL-001-044
3	INY-HLP-262-001

NOTE:
1. TWO SLIP JOINTS ASSUMED FOR BONDING SUBASSEMBLY
GND-WIR-341-007 QUANTITY ON THIS TYPICAL DRAWING.
ADDITIONAL QUANTITY WILL BE PROVIDED FOR POLES
WITH MORE THAN TWO JOINTS.

DRAWING REFERENCE

PLAN & PROFILE _____ XXXXXXXX
SUBASSEMBLY INDEX _____ XXXXXXXX

THIS PE SEAL IS ONLY APPLICABLE TO THE CURRENT CONSTRUCTION REVISION

ISSUED BY ENGINEERING DEPT FOR: CONSTRUCTION

THIS MAP/DOCUMENT IS A TOOL TO ASSIST EMPLOYEES IN THE PERFORMANCE OF THEIR JOBS.YOUR PERSONAL SAFETY IS PROVIDED FOR BY USING SAFETY PRACTICES, PROCEDURES AND EQUIPMENT AS DESCRIBED IN THE SAFETY TRAINING PROGRAMS, MANUALS AND SPARS.
INTERNAL INFORMATION; DO NOT COPY OR DISTRIBUTE WITHOUT EXPRESS WRITTEN CONSENT FROM XCEL ENERGY

CIRCUIT 7251 345 kV
DEADEND (2 POLES)



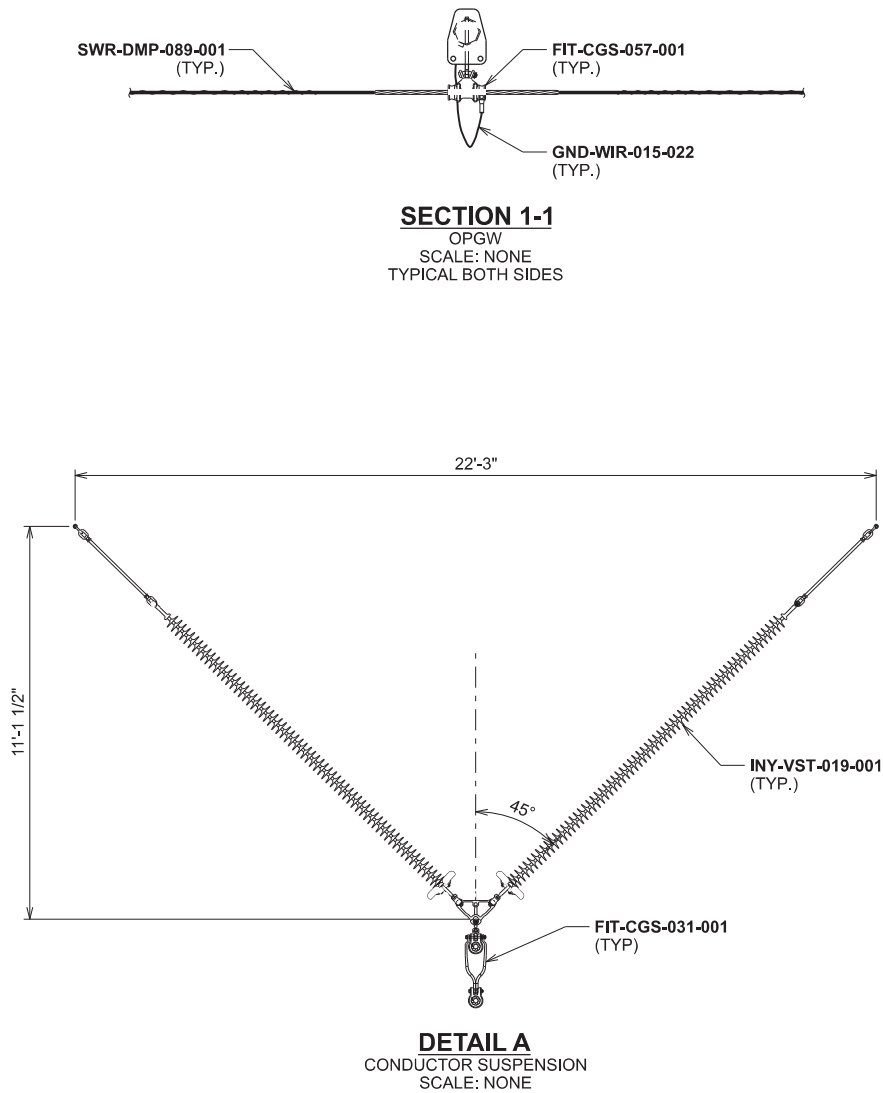
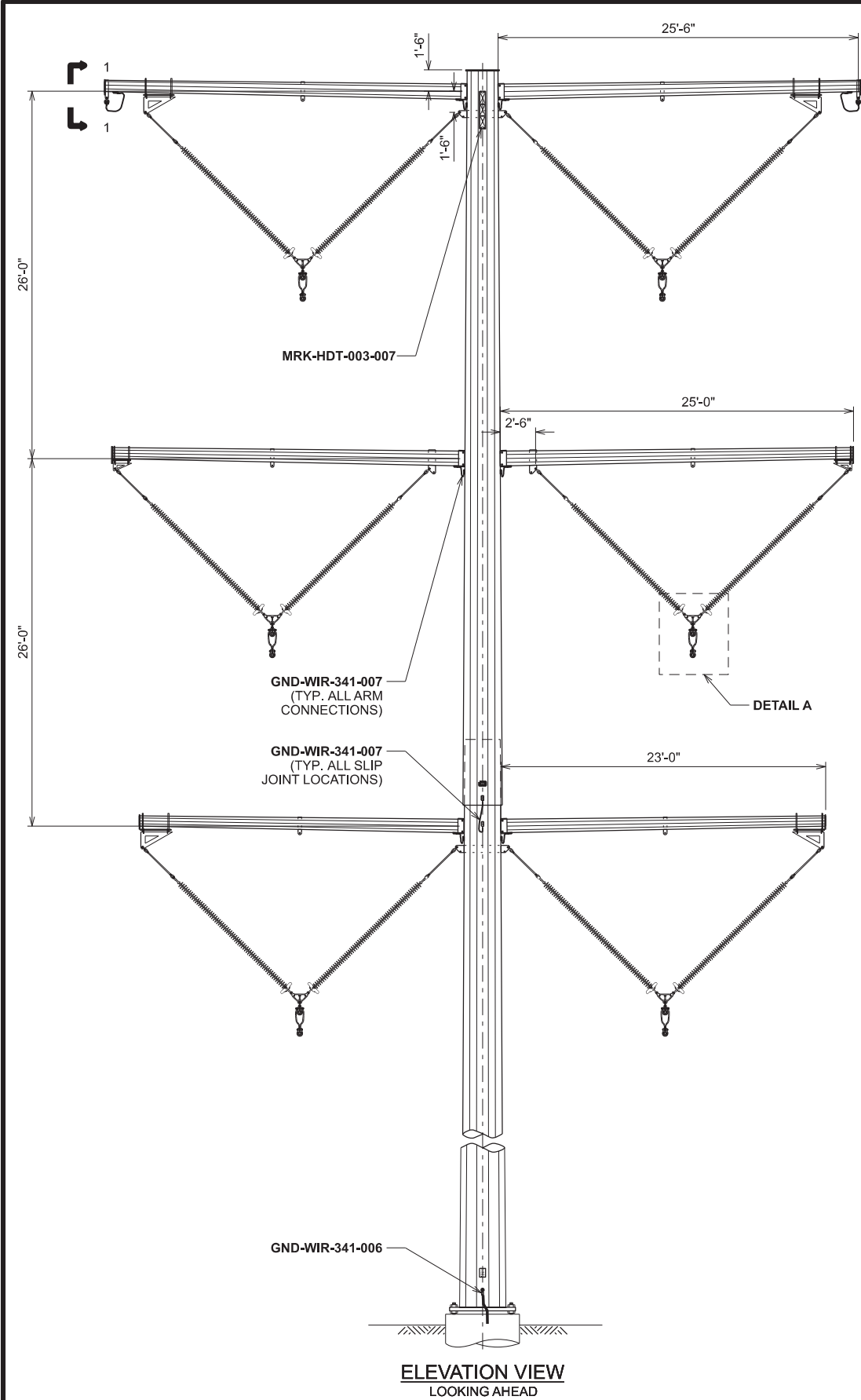
SWDBHLZ1-1

SCALE
AS NOTED

REV
0

REV	DATE	WBS 4	REVISION DESCRIPTION
0	10/26/2021	A.0001672.004.001.003	IFC - INSTALLATION OF 345KV TRANSMISSION LINE

SWDBHLZ1-1.DGN 8/26/2021 9:15:14 AM



NOTE:
1. TWO SLIP JOINTS ASSUMED FOR BONDING SUBASSEMBLY
GND-WIR-341-007 QUANTITY ON THIS TYPICAL DRAWING.
ADDITIONAL QUANTITY WILL BE PROVIDED FOR POLES
WITH MORE THAN TWO JOINTS.

DRAWING REFERENCE
PLAN & PROFILE _____ T366G001
SUBASSEMBLY INDEX _____ T366X001

ELEVATION: <7,300 FT

ISSUED BY ENGINEERING DEPT FOR: CONSTRUCTION

THIS MAP/DOCUMENT IS A TOOL TO ASSIST EMPLOYEES IN THE PERFORMANCE OF THEIR JOBS.YOUR PERSONAL SAFETY IS PROVIDED FOR BY USING SAFETY PRACTICES, PROCEDURES AND EQUIPMENT AS DESCRIBED IN THE SAFETY TRAINING PROGRAMS, MANUALS AND SPARS.
INTERNAL INFORMATION; DO NOT COPY OR DISTRIBUTE WITHOUT EXPRESS WRITTEN CONSENT FROM XCEL ENERGY

CIRCUIT 7251345 kV

TANGENT POLE

SWSAHQZ1-1

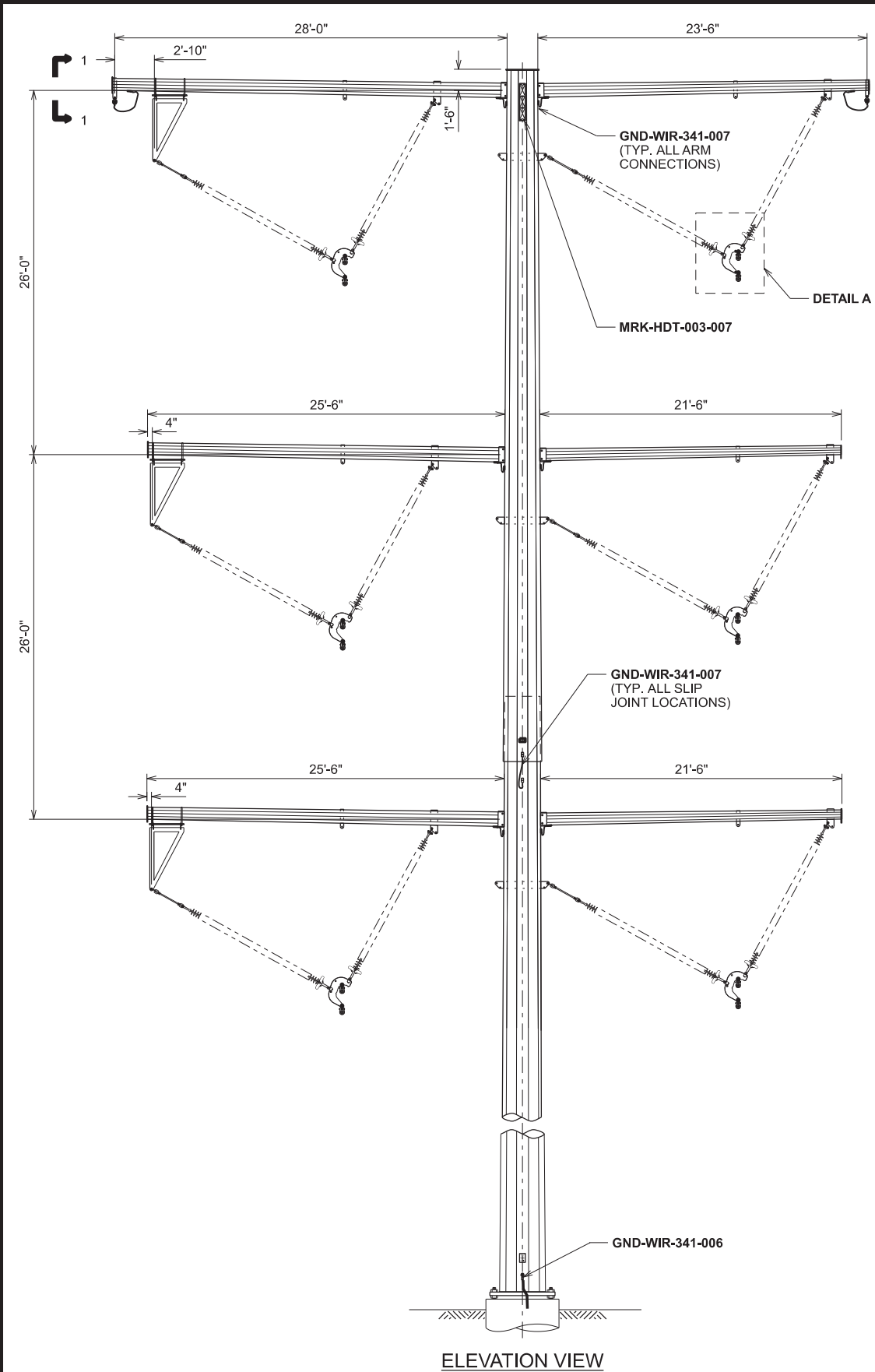
SCALE
AS NOTED

REV
0

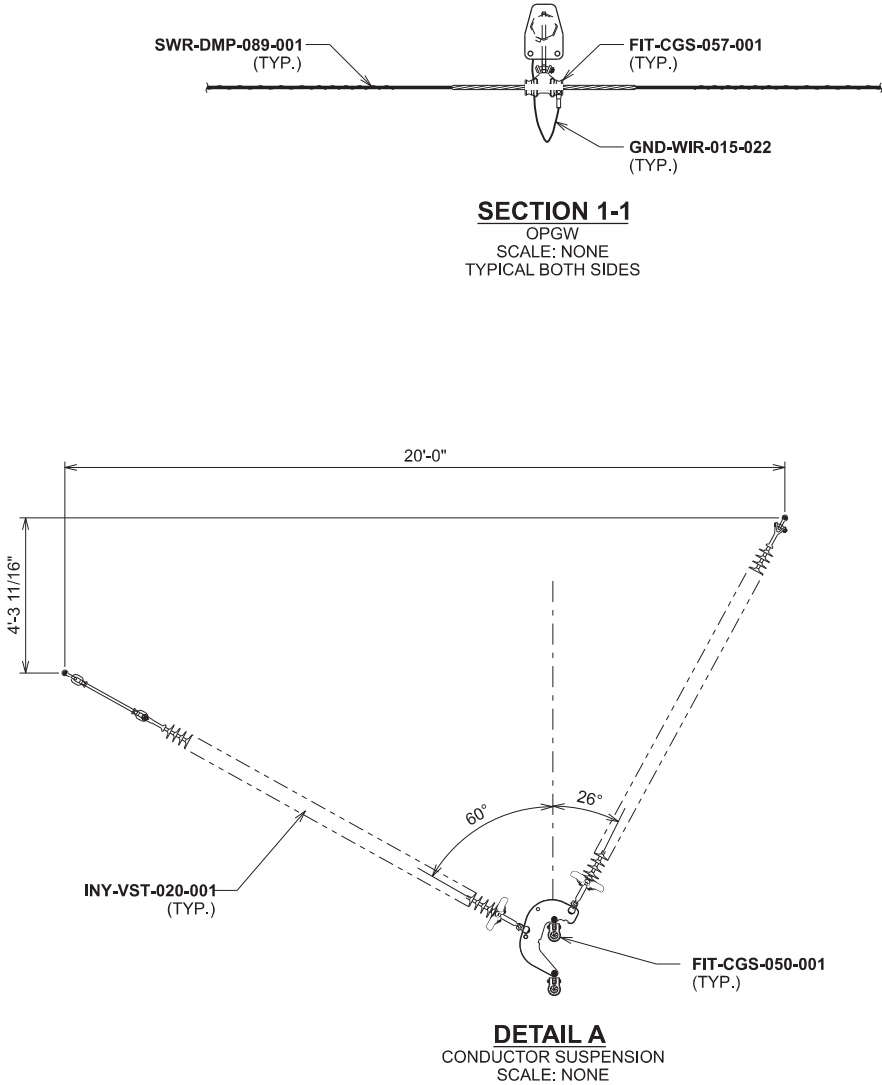
REV	DATE	WBS 4	REVISION DESCRIPTION
0	10/26/2021	A.0001672.004.001.003	IFC - INSTALLATION OF 345KV TRANSMISSION LINE

ASSEMBLY STR SWSAHQZ1-P1 FOR STEEL POLES LD T366C017	
QTY	SUBASSEMBLIES
2	FIT-CGS-057-001
3	FIT-CGS-031-001
2	GND-WIR-015-022
1	GND-WIR-341-006
8	GND-WIR-341-007
3	INY-VST-019-001
1	MRK-HDT-003-007
4	SWR-DMP-089-001

ASSEMBLY STR SWSAHQZ1-P2 FOR STEEL POLES LD T366C017	
QTY	SUBASSEMBLIES
3	FIT-CGS-031-001
3	INY-VST-019-001



POLE SHOWN IS RIGHT
(POSITIVE) ANGLE CONFIGURATION -
ROTATE 180° FOR LEFT
(NEGATIVE) ANGLE CONFIGURATION



NOTE:
1. TWO SLIP JOINTS ASSUMED FOR BONDING SUBASSEMBLY
GND-WIR-341-007 QUANTITY ON THIS TYPICAL DRAWING.
ADDITIONAL QUANTITY WILL BE PROVIDED FOR POLES
WITH MORE THAN TWO JOINTS.

DRAWING REFERENCE

PLAN & PROFILE _____ T366G001
SUBASSEMBLY INDEX _____ T366X001

ELEVATION: <7,300 FT

ISSUED BY ENGINEERING DEPT FOR: CONSTRUCTION

THIS MAP/DOCUMENT IS A TOOL TO ASSIST EMPLOYEES IN THE PERFORMANCE OF THEIR JOBS.YOUR PERSONAL SAFETY IS PROVIDED
FOR BY USING SAFETY PRACTICES, PROCEDURES AND EQUIPMENT AS DESCRIBED IN THE SAFETY TRAINING PROGRAMS, MANUALS AND SPARS.
INTERNAL INFORMATION; DO NOT COPY OR DISTRIBUTE WITHOUT EXPRESS WRITTEN CONSENT FROM XCEL ENERGY

CIRCUIT 7251 345 kV

ANGLE POLE



SWSAHQZ2-1

SCALE
AS NOTED

REV
0

REV	DATE	WBS 4	REVISION DESCRIPTION
0	10/26/2021	A.0001672.004.001.003	IFC - INSTALLATION OF 345KV TRANSMISSION LINE

ASSEMBLY STR SWSAHQZ2-P1 FOR STEEL POLES LD T366C028	
QTY	SUBASSEMBLIES
2	FIT-CGS-057-001
6	FIT-CGS-050-001
2	GND-WIR-015-022
1	GND-WIR-341-006
8	GND-WIR-341-007
3	INY-VST-020-001
1	MRK-HDT-003-007
4	SWR-DMP-089-001

ASSEMBLY STR SWSAHQZ2-P2 FOR STEEL POLES LD T366C028	
QTY	SUBASSEMBLIES
6	FIT-CGS-050-001
3	INY-VST-020-001

B2: Representative Photograph



Representative Transmission Line

D3: Visual Simulation

COLORADO'S POWER PATHWAY

AURORA VISUAL SIMULATION

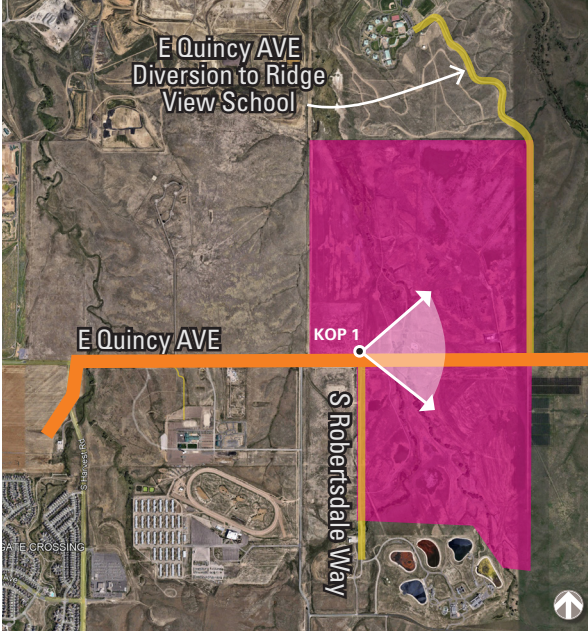
DECEMBER 2023

KOP 1: QUINCY AVE + S ROBERTSDALE WAY (PRONGHORN NATURAL AREA)



EXISTING CONDITION

PRINT GUIDE / IMAGE NOTES:
This sheet should be printed at 11 by 17 inches; full size with no scaling; and viewed at 10 inches. If viewed on a computer monitor, the document should be scaled to 100 percent and viewed at 10 inches away.



KEY LOCATION MAP

LEGEND

- Proposed transmission line route
- Pronghorn Natural Area

Viewpoint Number:	1
Viewpoint Location:	Pronghorn Natural Area
Date of Photograph:	4/11/2022
Time of Photograph:	1:18PM (MST)
Latitude:	39.638522° N
Longitude:	-104.674062° W
Viewing Direction:	East
Weather Condition:	Partly Cloudy
Ground Elevation + Camera Height:	6 feet

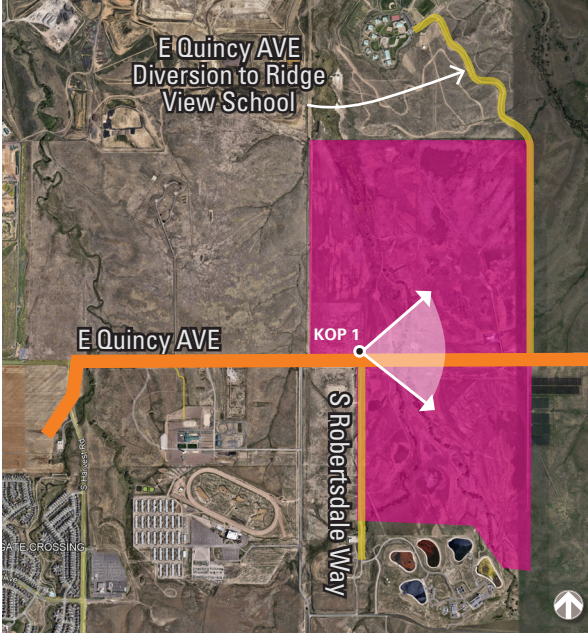
IMAGE DATA

KOP 1: QUINCY AVE + S ROBERTSDALE WAY (PRONGHORN NATURAL AREA)



SIMULATED CONDITION

PRINT GUIDE / IMAGE NOTES:
This sheet should be printed at 11 by 17 inches; full size with no scaling; and viewed at 10 inches. If viewed on a computer monitor, the document should be scaled to 100 percent and viewed at 10 inches away.



KEY LOCATION MAP

LEGEND

- Proposed transmission line route
- Pronghorn Natural Area

Viewpoint Number:	1
Viewpoint Location:	Pronghorn Natural Area
Date of Photograph:	4/11/2022
Time of Photograph:	1:18PM (MST)
Latitude:	39.638522° N
Longitude:	-104.674062° W
Viewing Direction:	East
Weather Condition:	Partly Cloudy
Ground Elevation + Camera Height:	6 feet

IMAGE DATA