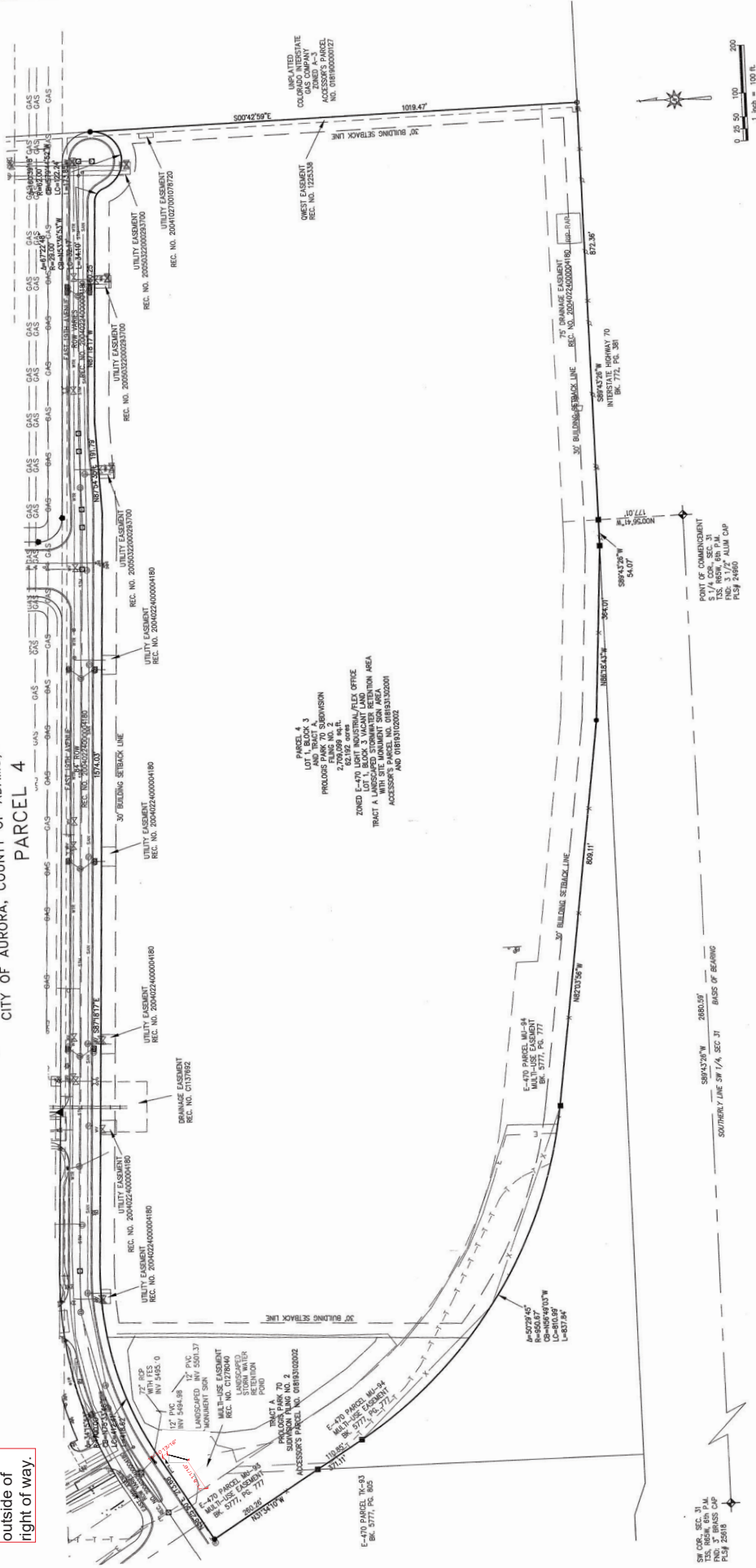


# ALIA/ACSM LAND TITLE SURVEY A PART OF TRACT A, PROLOGIS PARK 70 SUBDIVISION FILING NO. 1 A PART OF LOT 1, BLOCK 1, ALL OF LOT 1, BLOCK 2, LOT 1, BLOCK 3, TRACT A A PART OF LOT 1, BLOCK 1, PROLOGIS PARK 70 SUBDIVISION FILING NO. 2 AND AN UNPLATTED PART OF THE SOUTHEAST QUARTER OF SECTION 31, TOWNSHIP 3 SOUTH, RANGE 65 WEST OF THE 6th P.M. CITY OF AURORA, COUNTY OF ADAMS, STATE OF COLORADO

## PARCEL 4

Item 2A.

Sign is  
outside of  
right of way.



DATE	DESCRIPTION	REFERENCE
10/1/2018	ALIA/ACSM LAND TITLE SURVEY	
10/1/2018	A PART OF TRACT A, PROLOGIS PARK 70 SUBDIVISION FILING NO. 1	
10/1/2018	A PART OF LOT 1, BLOCK 1, ALL OF LOT 1, BLOCK 2, LOT 1, BLOCK 3, TRACT A	
10/1/2018	A PART OF LOT 1, BLOCK 1, PROLOGIS PARK 70 SUBDIVISION FILING NO. 2	
10/1/2018	AND AN UNPLATTED PART OF THE SOUTHEAST QUARTER OF	
10/1/2018	SECTION 31, TOWNSHIP 3 SOUTH, RANGE 65 WEST OF THE 6th P.M.	
10/1/2018	CITY OF AURORA, COUNTY OF ADAMS, STATE OF COLORADO	
10/1/2018	SCALE	1" = 100'
10/1/2018	DRAWN	WHN
10/1/2018	DATE	10/1/2018
10/1/2018	DESCRIPTION	ALIA/ACSM LAND TITLE SURVEY
10/1/2018	REFERENCE	

### MONUMENT LEGEND

- FGD. 2" ALUM CAP IN RANGE BOX
- FGD. 2" ALUM CAP PLS# 28038
- FGD. 2" ALUM CAP PLS# 35001
- FGD. 2" ALUM CAP PLS# 35001
- FGD. 2 1/2" ALUM CAP E-470 ROW MONUMENT PLS# 28649
- FGD. PLASTIC CAP PLS# 24670
- FGD. PLASTIC CAP. ILLIBLE

LEGEND	DESCRIPTION
UNDERGROUND GAS LINE	TELEPHONE PEDISTAL
UNDERGROUND LIGHT	TRAFFIC CONTROL BOX
METAL POST SIGN	WATER METER
WOOD POST SIGN	WATER MANHOLE
SANITARY MANHOLE	WATER VALVE
UNDERGROUND SANITARY LINE	IRRIGATION VALVE
STORM CATCH BASIN	IRRIGATION MANHOLE
STORM MANHOLE	
ELECTRIC BOX	
LIGHT POLE	
ELECTRIC METER	
ELECTRIC MARKER	
UNDERGROUND ELECTRIC LINE	
POWER POLE	
TRANSFORMER	

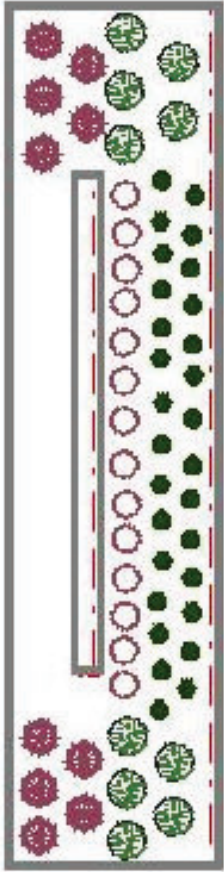







Revised Landscaping Plan Legend

Item 4A. Landscaping plan for area inside flower bed where existing monument and new monument will be going.  
All other landscaping to remain the same.



Legend		
	Common Name	Qty
Flower, Grass		
	Grass, Feather Reed	10
Flower, Perennial		
	Daylily, Stella d'Oro	29
	Salvia, Blue May Night	14
Shrub, Deciduous		
	Barberry, Crimson Pygmy	10

	
Project Title <b>PROLOGIS</b>	
Date <b>09.14.20</b>	
AGI Eor <b>N. CARRELL</b>	Lead Drafter NJC
Drawn By <b>POR</b>	Project Mgr. <b>C. SKINNER</b>
General Sign Specifications <input type="checkbox"/> Interior <input checked="" type="checkbox"/> Exterior <input type="checkbox"/> Single Faced <input checked="" type="checkbox"/> Double Faced <input type="checkbox"/> Non-Illuminated <input checked="" type="checkbox"/> Illuminated X.X Volts    X.X Amps(+/-) Location <b>AURORA, CO</b> Windspeed <b>115 MPH/ASCE 7-10 CAT II</b>	
Change	
Date	
Drawn By	
Drawing Revisions	
This document is the sole property of AGI, and all design, manufacturing, reproduction, use and sale of this document is prohibited without written consent. It is submitted under a confidential relationship, for a special purpose and the recipient by accepting this special purpose agrees to keep the contents confidential. In part, nor its contents revealed in any manner or to any person, nor to be used for any purpose other than intended, nor any special features peculiar to this design be incorporated in other projects.	
Code <b>43868</b>	Type <b>A</b>
Sign Type <b>PRO300-PREPARK70-PP-M-25-RT OPT2</b>	
PG. #: <b>01</b>	



# PROJECT PLANT LIST, LEGEND, AND TYPICAL PLAN SYMBOLS

## SHADE TREES

SYMBOL	COMMON NAME/BOTANICAL NAME	SIZE	REMARKS / SPACING	WATER REQ.
CA	Catalpa	2 1/2" min. cal.	B4B, full crown, staked	L
HB	Hackberry	2 1/2" min. cal.	Specimen Quality	L
HLI	Celtis occidentalis	2 1/2" min. cal.	Specimen Quality	L
KC	Honey Locust, Imperial	2 1/2" min. cal.	B4B, full crown, staked	L
NLC	Gleditsia triacanthos 'Imperial'	2 1/2" min. cal.	Specimen Quality	M
MSA	Kentucky Coffee Tree	2 1/2" min. cal.	Specimen Quality	L
PA	Gymnocladus dioica	2 1/2" min. cal.	Specimen Quality	L
	Narrowleaf Cottonwood	2 1/2" min. cal.	Specimen Quality	L
	Populus angustifolia	2 1/2" min. cal.	Specimen Quality	L
	Marshall Ash	2 1/2" min. cal.	B4B, full crown, staked	L
	Frax. pennsylvanica 'Marshall'	2 1/2" min. cal.	Specimen Quality	L
	Frax. pennsylvanica 'Patmore'	2 1/2" min. cal.	Specimen Quality	L

## ORNAMENTAL TREES

GRT	Golden Rain Tree	2" Cal.	B4B, specimen quality, staked	L
TCH	Koeleruteria paniculata	2 1/2" Cal.	B4B, specimen quality, staked	L
	Thornless Cockspur Hawthorn	2 1/2" Cal.	Specimen Quality	L
	Crataegus crus-galli 'hermis'	2 1/2" Cal.	Specimen Quality	L
AP	Austrian Pine	6' ht. min.	B4B, full form, gyled	L
PP	Pinus nigra	6' ht. min.	Specimen Quality	L
	Ponderosa Pine	6' ht. min.	B4B, full form, gyled	L
	Pinus ponderosa	6' ht. min.	Specimen Quality	L

## EVERGREEN SHRUBS

BJ	Buffalo Juniper	5' 18"-24" spread	48" o.c. max.	L
BFJ	Juniperus sabina 'Buffalo'	5' 18"-24" spread	8' o.c. max.	L
WJ	Blue Fritzer Juniper	5' 18"-24" spread	48" o.c. max.	L
	Juniperus x media 'Pfitzeriana Glauca'	5' 18"-24" spread	48" o.c. max.	L
	Wilton Carpet Juniper	5' 18"-24" spread	48" o.c. max.	L
	Juniperus horizontalis 'Wilton'	5' 18"-24" spread	48" o.c. max.	L
RS	Russian Sage	5' 18"-24" spread,	36" o.c.	L
	Perovskia atriplicifolia	5 canes min.		
TBR	Tall Blue Rabbitbrush	5' 18"-24" spread,	36" o.c.	L
	Chrysothamnus nauseosus albicaulis	5 canes min.		
BM	Blue Mist Spirea	5' 18"-24" spread,	36" o.c.	L
	Caryopteris x candonensis 'Blue Mist'	5 canes min.		

Small Shrubs (3)

# PROJECT PLANT LIST, LEGEND, AND TYPICAL PLAN SYMBOLS

## SHRUBS CONT'D

BR	Boulder Raspberry	5'	18" - 24" spread,	48" o.c.	L
	Rubus deliciosus	5 canes min.			
RM	Rocky Mountain Sumac	5'	18" - 24" spread,	48" o.c.	L
	Rhus glabra var. cismontana	5 canes min.			
FRN	Ferdoush	5'	18" - 24" spread,	48" o.c.	L
	Chamaebatiaria millerifolia	5 canes min.			
RB	Redleaf Barbary	5'	18" - 24" spread,	48" o.c.	M
	Berberis thunbergii 'Atropurpurea'	5 canes min.			
TUS	Tall Western Sage	5'	18" - 24" spread,	48" o.c.	L
	Artemisia tridentatum	5 canes min.			
WSC	Western Sand Cherry	5'	18" - 24" spread,	48" o.c.	L
	Prunus besseyi	5 canes min.			
APL	Apache Plume	5'	18" - 24" spread,	60" o.c.	L
	Fallugia paradoxa	5 canes min.			
RLR	Red Leaved Rose	5'	18" - 24" spread,	60" o.c.	L
	Rosa glauca	5 canes min.			
ARH	Arnold's Red Honeysuckle	5'	18" - 24" spread,	72" o.c.	M
	Lonicera tartarica 'Arnold's Red'	5 canes min.			
CML	Common Lilac	5'	18" - 24" spread,	72" o.c.	L
	Syringa vulgaris	5 canes min.			
ACR	Austrian Copper Rose	5'	18" - 24" spread,	8' o.c.	L
	Rosa foetida 'Bicolor'	5 canes min.			
STS	Staghorn Sumac	5'	18" - 24" spread,	8' o.c.	L
	Rhus typhina	5 canes min.			
SPS	Siberian Raspberry	5'	18" - 24" spread,	8' - 10' o.c.	L
	Caragana arborescens	5 canes min.			
NCC	Native Chokeberry	5'	18" - 24" spread,	10' o.c.	M
	Prunus virginiana melanocarpa	5 canes min.			
UTV	Wuyfaringtres Viburnum	5'	18" - 24" spread,	8' o.c.	L
	Viburnum lantana	5 canes min.			

## PERENNIALS & GRASSES

BA	Blue Avena Grass	1"	Fully Established	24" o.c.	L
DFG	Helictotrichon sempervirens	1"	Fully Established	18" o.c.	L
BGG	Dwarf Fountain Grass	1"	Fully Established	18" o.c.	M
DAY	Fernisetum alopecuroides 'Hamlet'	1"	Fully Established	24" o.c.	L
DMG	Blue Switch Grass	1"	Fully Established	24" o.c.	M
FRG	Panicum virgatum 'Heavy Metal'	1"	Fully Established	24" o.c.	M
FRG	Daylily	1"	Fully Established	24" o.c.	M
FRG	Hemerocallis 'Sheila de Oro'	1"	Fully Established	24" o.c.	M
FRG	Dwarf Maiden Grass	1"	Fully Established	24" o.c.	M
FRG	Miscanthus sinensis 'Adagio'	1"	Fully Established	24" o.c.	M
FRG	Feather Reed Grass	1"	Fully Established	24" o.c.	M
FRG	Grass, Calamagrostis acutiflora Karl Foerster'	4" Pots	Fully Established	24" o.c.	L
9F	Ribbon Grass	1"	Fully Established	24" o.c.	M
VCR	Phalaris arundinacea 'Pivia'	1"	Fully Established	24" o.c.	M
	Shouy Fleabane	1"	Fully Established	24" o.c.	M
	Eriogon speciosa	4" Pots	Fully Established	24" o.c.	M
	Crystal River Speedwell	4" Pots	Fully Established	24" o.c.	M
	Veronica 'Crystal River'	4" Pots	Fully Established	24" o.c.	M

Irrigated Sod

The Native Seed Mixes include: Little Bluestem, Sidecats grama, Western wheatgrass, Needle and thread, Blue grama, Slender wheatgrass, and Idaho fescue.

PROLOGIS  
The Global Distribution Solution

14100 East 35th Place  
Aurora, Colorado 80011  
Phone: 303.375.9292  
Fax: 303.576.2804

REV: 10.04.04  
DATE: 7.02.04 SHEET: L7

PROLOGIS PARK 70 ENTRY AND OPEN SPACE 2004-6022-00

PLANT LOCATION 

NOTE:  
ALIGN FRONT ROW PARALLEL TO BED LINE

8 SHRUB/FLOWER/GROUND COVER

18 PLANTING 1' AYC/IT

NOT TO SCALE

<p>ALL JOINTS TO BE SECURELY STAKED.</p> <p>CONTRACTOR SHALL CUT TOP EDGE(S) AS NEEDED BE PARALLEL WITH GRADE.</p>	<p>1</p> <p>18</p>	<p>STEEL EDGER</p>
--	--------------------	--------------------

4	SHRUB PLANTING	5	TREE PLANTING
1.8	NOT TO SCALE	1.8	

NOTE: HOLD GRADE 1" BELOW EDGE OF WALK OR CURB

NOTE: THIS INSTALLATION SHALL BE IN ACCORDANCE WITH THE CITY OF CHICAGO PLANTING SPECIFICATIONS, LATEST EDITION. THIS INSTALLATION SHALL BE IN ACCORDANCE WITH THE CITY OF CHICAGO PLANTING SPECIFICATIONS, LATEST EDITION. THIS INSTALLATION SHALL BE IN ACCORDANCE WITH THE CITY OF CHICAGO PLANTING SPECIFICATIONS, LATEST EDITION.

TABLE 1. *Continued*



Project Title  
**PROLOGIS**

Date 10.05.20

AGI Eor **N. CARRELL**  
Lead Drafter **NJC**  
Drawn By **POR**  
Project Mgr. **C. SKINNER**

General Sign Specifications  
☐ Interior ☒ Exterior  
☐ Single Faced ☒ Double Faced  
☐ Non-Illuminated  
☒ Illuminated  
\_XX\_ Volts \_XX\_ Amps(+/-)  
Location **AUROMA, CO**  
Windspeed **115 MPH/ASCE 7-10 CAT B**

Change  
Date  
Drawn By  
Drawing Revisions

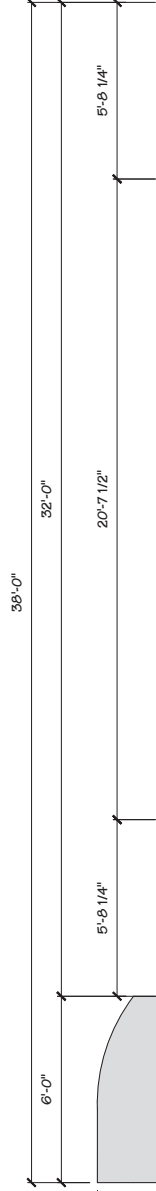
This document is the property of AGI and is not to be reproduced, copied, or used for any other purpose without the written consent of AGI. It is loaned to you for your use only and is to be returned to AGI upon completion of the project. The document will be held in confidence and its use for any other purpose without the written consent of AGI is prohibited. AGI is not responsible for any errors or omissions in this document. AGI is not responsible for any damage to property or persons caused by the use of this document. AGI is not responsible for any consequences of any action taken based on the information contained in this document. AGI is not responsible for any claims, damages, losses, or expenses of any kind or nature, including reasonable attorneys' fees, that may be incurred by or for any third party as a result of the use of this document. AGI is not responsible for any claims, damages, losses, or expenses of any kind or nature, including reasonable attorneys' fees, that may be incurred by or for any third party as a result of the use of this document.

Code **43868** Type **A**  
Sign Type **PP-3000-5-REPARK70-001-**  
PG. # **01**  
PP-M-25-LT OPT2

2855 International Pkwy.  
Virginia Beach, VA 23452



2  
1  
1/4" = 1'-0"



38'-0"

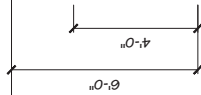
32'-0"

20'-7 1/2"

5'-8 1/4"

5'-8 1/4"

6'-0"



6'-0"

4'-0"

4'-0"

4'-0"

4'-0"

4'-0"

4'-0"

4'-0"

4'-0"

4'-0"

4'-0"

4'-0"

4'-0"

4'-0"

4'-0"

4'-0"

4'-0"

4'-0"

4'-0"

4'-0"

4'-0"

4'-0"

4'-0"

4'-0"

4'-0"

4'-0"

4'-0"

4'-0"

4'-0"

4'-0"

4'-0"

4'-0"

4'-0"

4'-0"

4'-0"

4'-0"

4'-0"

4'-0"

4'-0"

4'-0"

4'-0"

4'-0"

4'-0"

4'-0"

4'-0"

4'-0"

4'-0"

4'-0"

4'-0"

4'-0"

4'-0"

4'-0"

4'-0"

4'-0"

4'-0"

4'-0"

4'-0"

4'-0"

4'-0"

4'-0"

4'-0"

4'-0"

4'-0"

4'-0"

4'-0"

4'-0"

4'-0"

4'-0"

4'-0"

4'-0"

4'-0"

4'-0"

4'-0"

4'-0"

4'-0"

4'-0"

4'-0"

4'-0"

4'-0"

4'-0"

4'-0"

4'-0"

4'-0"

4'-0"

4'-0"

4'-0"

4'-0"

4'-0"

4'-0"

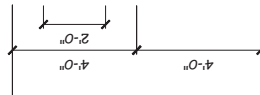
4'-0"

4'-0"

Item 3A. Sign is fabricated out of ACM  
Item 3B. Overall SQFT 406 SqFt



25'-0"



8'-0"

4'-0"

4'-0"

4'-0"

4'-0"

4'-0"

4'-0"

4'-0"

4'-0"

4'-0"

4'-0"

4'-0"

4'-0"

4'-0"

4'-0"

4'-0"

4'-0"

4'-0"

4'-0"

4'-0"

4'-0"

4'-0"

4'-0"

4'-0"

4'-0"

4'-0"

4'-0"

4'-0"

4'-0"

4'-0"

4'-0"

4'-0"

4'-0"

4'-0"

4'-0"

4'-0"

4'-0"

4'-0"

4'-0"

4'-0"

4'-0"

4'-0"

4'-0"

4'-0"

4'-0"

4'-0"

4'-0"

4'-0"

4'-0"

4'-0"

4'-0"

4'-0"

4'-0"

4'-0"

4'-0"

4'-0"

4'-0"

4'-0"

4'-0"

4'-0"

4'-0"

4'-0"

4'-0"

4'-0"

4'-0"

4'-0"

4'-0"

4'-0"

4'-0"

4'-0"

4'-0"

4'-0"

4'-0"

4'-0"

4'-0"

4'-0"

4'-0"

4'-0"

4'-0"

4'-0"

4'-0"

4'-0"

4'-0"

4'-0"

4'-0"

4'-0"

4'-0"

4'-0"

4'-0"

4'-0"

4'-0"

1  
1/4" = 1'-0"

FRONT ELEVATION