

# Nick's Convenience

64<sup>TH</sup> & JACKSON GAP, AURORA, CO 80019



N-1 HANDCRAFTED VENEER STONE  
BY NITTERHOUSE -SUMMIT LEDGE



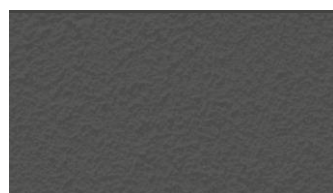
N-2 FIBERON COMPOSITE WOOD  
PANELING BY FIBERON – WENGÉ



CMU-1 SPLIT FACE CONCRETE  
MASONRY – BASALITE EBONY



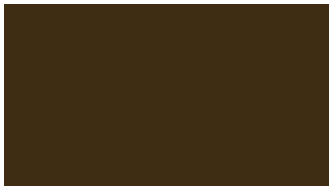
E-1 THREE COAT STUCCO SYSTEM  
ANEW GRAY SW7030



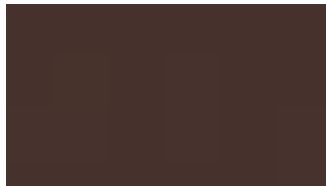
E-2 THREE COAT STUCCO SYSTEM  
IRON ORE SW 7069



S-1 ALUMINUM STOREFRONT  
GLAZING – DARK BRONZE



P-3 PREFINISHED PARAPET CAP  
DARK BRONZE



C-1 PREFINISHED ALUMINUM  
CANOPY - MAPES BRONZE BAKED  
ENAMEL



C-2 PREFINISHED ALUMINUM  
CANOPY - TBD

EXTERIOR MATERIALS SCHEDULE (NOT ALL MATERIALS IN SCHEDULE ARE USED)		
N0.	MATERIAL	MANUF.-COLOR
N-1	HANDCRAFTED VENEER STONE	STONE STYLER - PA MASONRY
N-2	FIBERON COMPOSITE WOOD PANELING	FIBERON - MORA
CMU-1	SPLIT-FACE CONCRETE MASONRY UNIT	BASALITE - SPLIT FACE - EBONY
E-1	THREE COAT STUCCO SYSTEM	THREE COAT STUCCO SYSTEM - STAINLESS
E-2	THREE COAT STUCCO SYSTEM	THREE COAT STUCCO SYSTEM - FLINT
S-1	ALUMINUM STOREFRONT GLAZING	METAL ACCENTS - SW 7675 'SEAL SKIN'
P-3	PREFINISHED PARAPET CAP	20 GA. PREFINISHED METAL CAP- DARK BRONZE
C-1	PREFINISHED ALUMINUM CANOPY	MAPES LUMISHADE CANOPY - ALUMINUM - BAKED ENAMEL W/ REAR GUTTER CONNECTIONS
C-2	FUELING CANOPY	20 GA. PREFINISHED METAL - DARK BRONZE