



ALDRIDGE TRANSPORTATION CONSULTANTS, LLC

Advanced Transportation Planning and Traffic Engineering

JOHN M.W. ALDRIDGE, PE
COLORADO LICENSED PROFESSIONAL ENGINEER

1082 CHIMNEY ROCK ROAD
HIGHLANDS RANCH, CO 80126
TELE: 303-703-9112

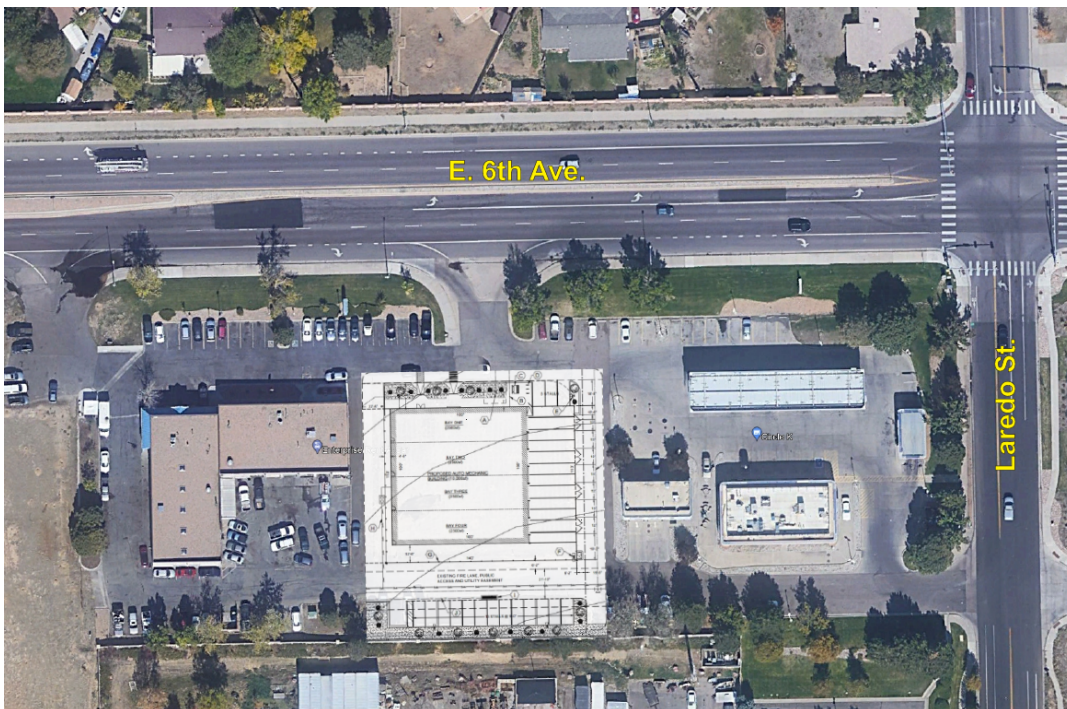
December 1, 2023

Mihajlo Crnogorac
MC Architecture
mc@mcarchitecture.net

RE: Traffic Letter
Genaros Automotive – Aurora, CO

Dear Mihajlo:

This letter provides an analysis of the potential traffic impact that would be occasioned by the construction of a 10,000 square foot auto mechanic building near the southwest corner of E. 6th Ave. and Laredo St. in Aurora. The building site is a “fill in” between an existing Enterprise Car Rental and Circle K gas station and convenience store. The figure below shows the site plan and the adjacent streets and intersection. The site will be accessible from an existing right in/right out access on 6th Ave. and full movement access on Laredo St.





E. 6th Ave. is a state highway, CO-30A, and categorized R-A. It is a four-lane Major Arterial divided by a raised concrete median. It currently carries approximately 17,000 AADT per the CDOT OTIS website. The speed limit is 40 mph. The heavy truck percentage is 5.1 percent, and the 20-year growth factor is 1.23.

Lardo St. is two-lane Collector roadway that carries approximately 5,000 AADT on the north leg and 3,500 AADT on the south leg. The speed limit is 30 mph on the north leg and 25 mph on the south leg.

The intersection of the two streets is signalized and features a complete array of auxiliary turn lanes on each approach.

According to the 11th Edition of the ITE Trip Generation Manual, the facility will generate little traffic. The table below shows the Auto Care Center (Land Use Code 942) trip generation in the AM and PM peak hours. A daily volume is not available.

Trip Generation Table								
ITE Code	Land Use	Variable	Quantity	ADT	AM in	AM out	PM in	PM out
942	Auto Care Center	Bays	4	n/a	1.03	0.49	1.04	1.13
					4	2	4	5
Total Trips					4	2	4	5

In terms of circulation, all left turn in and out movements and southbound Laredo St. right turns in and westbound 6th Ave. right turns in will occur on Laredo St. behind the Circle K gas station. Only eastbound right turns in and out will occur on 6th Ave. No vehicle queuing is anticipated with this low amount of traffic.

This volume of peak hour traffic will have no discernible impact on the right in/right out access at 6th Ave. or the full movement access on Laredo St. The volume of traffic using the 6th Ave. access is too low to warrant a State Highway Access Permit for a change in use.

Based on the analysis herein and in my professional opinion, the trip generation of the Genaros auto care facility can be accommodated harmoniously with existing and future traffic operations on 6th Ave. and Laredo St. No improvements to the adjacent streets and intersections are necessitated by the development of the facility.



ATC appreciates the opportunity to be of service. Please call if you have any questions. We can be reached on 303-703-9112.



Respectfully submitted,

Aldridge Transportation Consultants, LLC

John M.W. Aldridge, PE
Principal

ATC is a professional service firm specializing in traffic engineering and transportation planning. ATC's principal, John M.W. Aldridge is a Colorado licensed professional engineer. In the past 20 years, ATC has prepared over 1,000 traffic impact studies, designed over 100 traffic signals, and has provided expert witness testimony on engineering design and access issues on multi-million-dollar interchange and highway projects in Kansas and Colorado.