

EXHIBIT A

A Fire Lane Easement situated in a portion of Lot 1, Block 1, Weatherstone Subdivision Filing No. 2, recorded November 13, 1980, in Book 47, Page 54, in the official records of Arapahoe County, Colorado, located in the NW1/4 of Section 5, Township 4 South, Range 66 West, of the Sixth Principal Meridian, being more particularly described as follows:

Easement "A"

COMMENCING at the southwest corner of said Lot 1; thence along the south line of said Lot 1, N89°26'26"E (Bearings are based upon the west line of the NW1/4 of Section 5, Township 4 South, Range 66 West, of the Sixth Principal Meridian, monumented at the W1/4 Corner of said Section 5 with a 2" brass cap stamped "LS 13327", properly marked, and at the NW Corner of said Section 5 with a 2 1/2 inch pipe with 3 inch brass cap stamped "LS 16848" in monument box, properly marked, and measured to bear N00°36'55"W, a distance of 2652.41 feet), a distance of 563.13 feet, to the **POINT OF BEGINNING**; thence leaving said south line, N00°38'22"W, a distance of 30.00 feet, to a point on a south line of an existing Fire Lane Easement, depicted on said Weatherstone Subdivision Filing No. 2; thence along said south line, N89°26'28"E, a distance of 1.00 feet, to an angle point on said south line; thence along an east line of said Easement, S00°38'22"E, a distance of 30.00 feet, to a point on the south line of said Lot 1; thence along said south line, S89°26'26"W, a distance of 1.00 feet, to the **POINT OF BEGINNING**.

Containing 30 Sq. Ft. or 0.001 acres, more or less.

Easement "B"

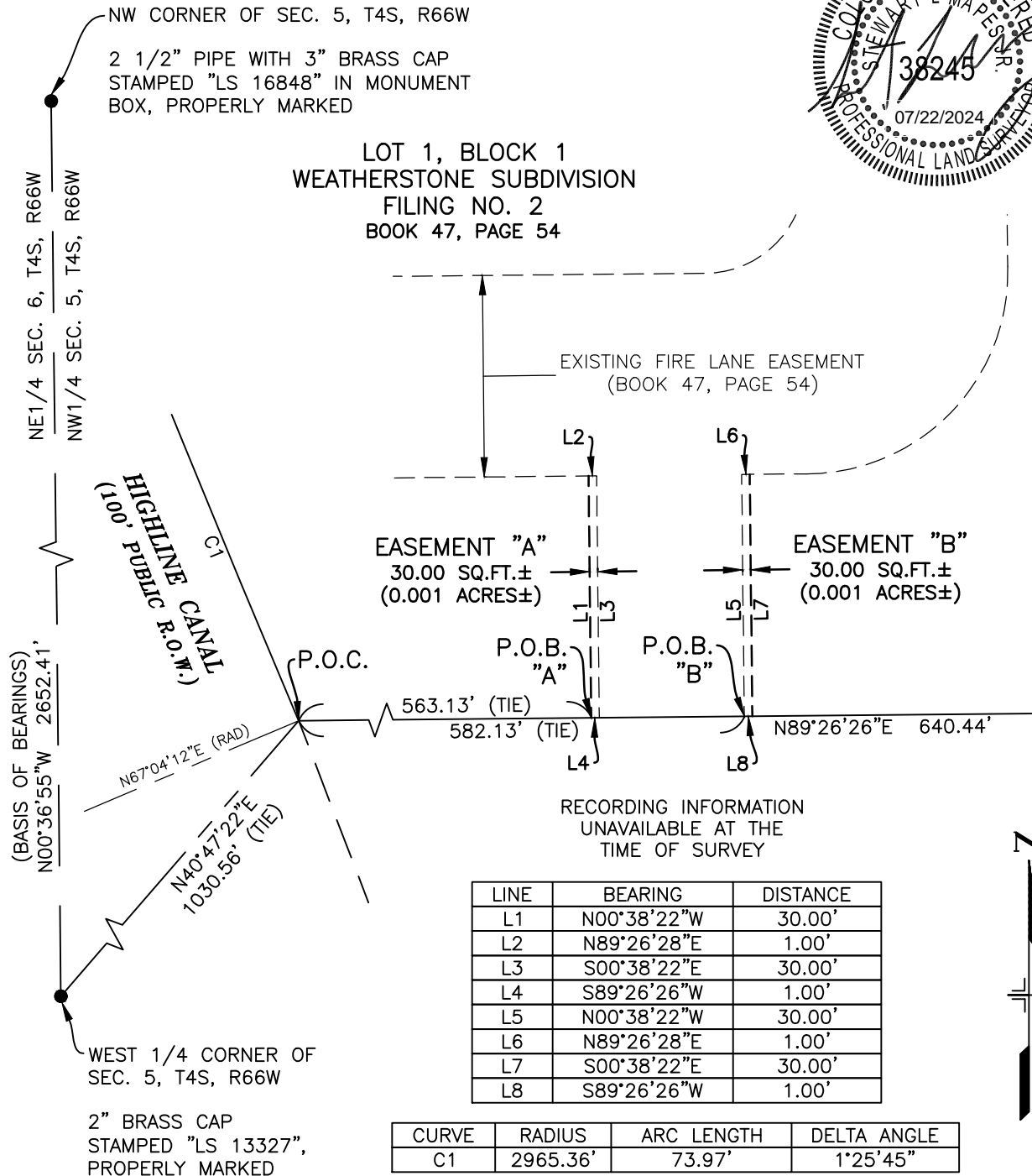
COMMENCING at the southwest corner of said Lot 1; thence along the south line of said Lot 1, N89°26'26"E, a distance of 582.13 feet, to a point on an east line of an existing Fire Lane Easement, depicted on said Weatherstone Subdivision Filing No. 2, and the **POINT OF BEGINNING**; thence leaving said south line, along said east line, N00°38'22"W, a distance of 30.00 feet, to an angle point on the south line of said Easement; thence along said south line, N89°26'28"E, a distance of 1.00 feet; thence leaving said south line, S00°38'22"E, a distance of 30.00 feet, to a point on the south line of said Lot 1; thence along said south line, S89°26'26"W, a distance of 1.00 feet, to the **POINT OF BEGINNING**.

Containing 30 Sq. Ft. or 0.001 acres, more or less.



Stewart L. Mapes, Jr.
Colorado Professional Land Surveyor No. 38245

ILLUSTRATION FOR
EXHIBIT A



BEARINGS ARE BASED ON THE WEST LINE OF THE NW 1/4 OF SECTION 5, T4S, R66W, 6TH P.M., BEING N00°36'55"W.

This drawing does not represent a monumented survey. It is intended only to depict the attached legal description.

CITY OF AURORA, COLORADO

| | | |
|--------------------|---------------------|---------------------------|
| DRAWN BY: DHP | SCALE: 1"=20' | R.O.W. FILE NUMBER N/A |
| CHECKED BY: SLM | DATE: 07/22/2024 | JOB NUMBER: 232264 |

A FIRE LANE EASEMENT SITUATED IN THE NW 1/4 OF SECTION 5, T4S, R66W OF THE 6th P.M., CITY OF AURORA, COUNTY OF ARAPAHOE, STATE OF COLORADO, BEING PART OF LOT 1, BLOCK 1, WEATHERSTONE SUBDIVISION FILING NO. 2, RECORDED IN ARAPAHOE.