

BUILDING 300 PERSPECTIVES

NOTE: LANDSCAPE INFORMATION IS NOT SHOWN AND IS TO BE REFERENCED ON LANDSCAPE PLANS.



BUILDING 300 - LOOKING SOUTH ALONG BLACKHAWK STREET



BUILDING 300 - VIEW LOOKING EAST DOWN E 2ND PLACE

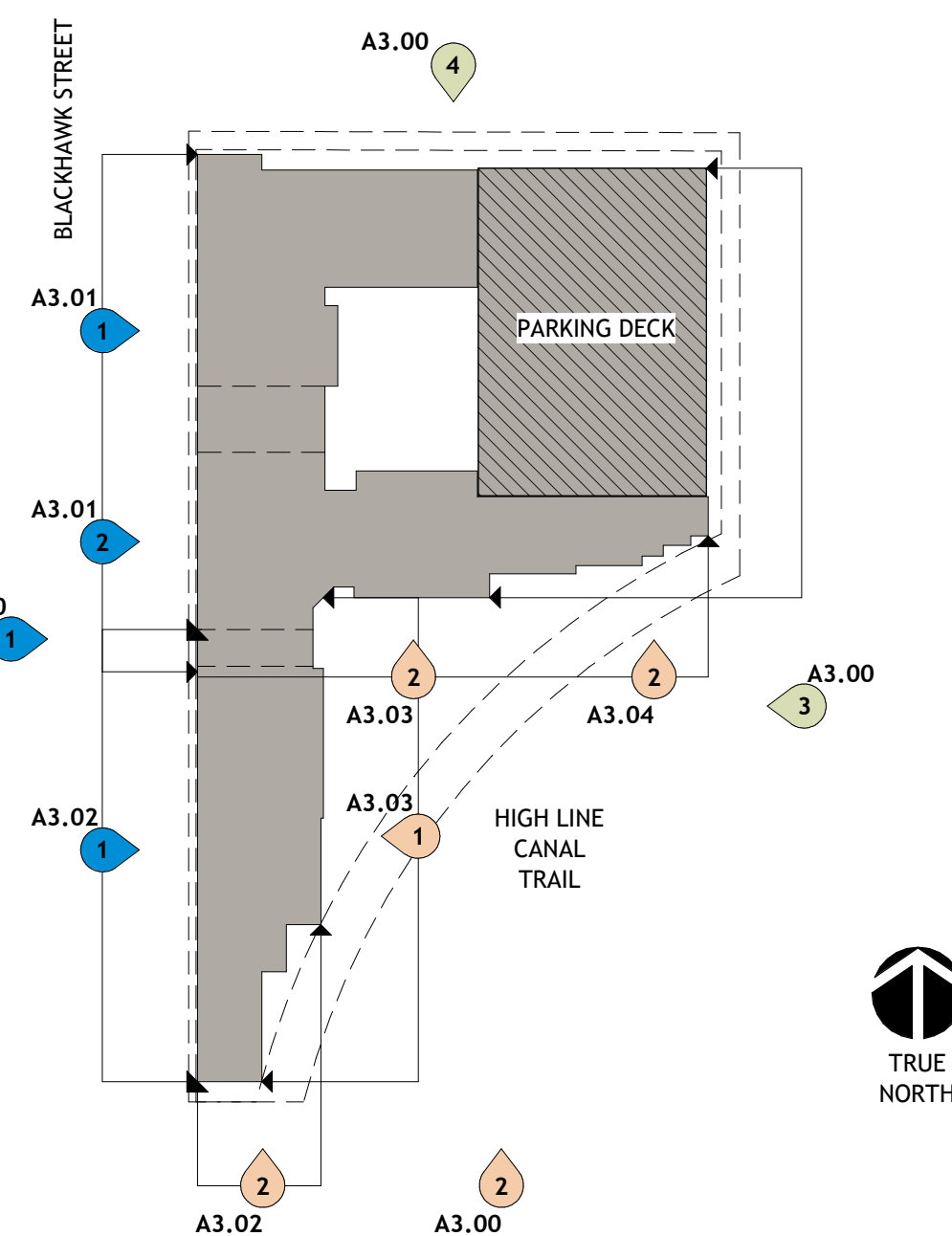


BUILDING 300 - LOOKING NORTH ALONG BLACKHAWK STREET



BUILDING 300 KEY PLAN

NOTE: REFER TO BUILDING PLANS FOR ADDITIONAL INFORMATION. KEY PLAN IS DIAGRAMMATIC ONLY.



BUILDING ELEVATION KEY NOTES	
Key Value	Keynote Text
BR1	BRICK - ALPINE SELECT
BR2	BRICK - IRON MOUNTAIN
BR3	BRICK SOLDIER/ ROWLOCK COURSE (MATCH ADJACENT COLOR)
BR4	BRICK SOLDIER COURSE (MATCH ADJACENT COLOR)
BR5	BRICK ROWLOCK COURSE (MATCH ADJACENT COLOR)
E01	2 LINE ALUMINUM BALCONY RAIL W/ VERTICAL PICKETS @ 4" O.C. - DARK BRONZE
E02	GLASS BALCONY RAILING
E03	GLASS BALCONY RAILING W/ HANDRAIL
E04	VINYL WINDOWS (SEE SCHEDULE)
E05	BALCONY DOOR (SEE SCHEDULE)
E06	PAINTED METAL DOOR & FRAME (SEE SCHEDULE)
E09	
E20	EXTERIOR LIGHT FIXTURE (SEE RCPS & LIGHTING SCHEDULE)
E21	HOSE BIB CONNECTION (SEE PLUMBING DRAWINGS)
E30	ROOF SHINGLES - COLOR TBD
E31	RIDGE VENT
E32	PREFINISHED METAL COPING - DARK BRONZE
E33	PREFINISHED METAL GUTTER - DARK BRONZE
E34	PREFINISHED METAL DOWNSPOUT - DARK BRONZE
E35	PREFINISHED METAL SCUPPER WITH CONDUCTOR HEAD - DARK BRONZE
E36	PREFINISHED METAL OVER-FLOW SCUPPER - DARK BRONZE
E37	TPO CANOPY ROOF
FC1	FIBER CEMENT - CARIBBEAN CORAL
FC3	FIBER CEMENT - CREWEL TAN
FC4	FIBER CEMENT - PEPPERCORN
FC5	FIBER CEMENT - WILD CURRANT
FC6	FIBER CEMENT - GRAY MATTERS
FC7	FIBER CEMENT LAP SIDING - GRAY MATTERS
G04	FIRE DEPARTMENT KNOX BOX (VERIFY LOCATION WITH AHJ)
G05	HANDRAIL (SEE DETAILS)
G06	ROOF DRAIN WITH INSULATION (SEE PLUMBING PLANS FOR SIZE)
G07	TV LOCATION; COORDINATE MOUNTING HGT., SIZE AND FINAL LOCATION WITH ID DRAWINGS
PC1	PRECAST STRUCTURAL CONCRETE

EXTERIOR VENEER TAKE OFFS  
TOTAL BRICK SF: 34,061 (51%)  
TOTAL FC SF: 33,282 (49%)

NOTE:  
1. PARKING DECK NOT INCLUDED.  
2. SEE ELEVATIONS FOR BREAKDOWN OF EACH ELEVATION.

	SW 7020 BLACK FOX		SW 0011 CREWEL TAN
	IRON MOUNTAIN NOTE: MATCHES B400 AND 500 BRICK AT GROUND LEVEL AND RETAIL ZONES TO PROVIDE COMMON MATERIAL BETWEEN BUILDINGS.		SW 2854 CARIBBEAN CORAL
	PRE-CAST PANELS NOTE: AT PARKING GARAGE ONLY.		SW 2837 AURORA BROWN

**NILES BOLTON ASSOCIATES**  
3060 Peachtree Rd. N.W.  
Suite 600  
Atlanta, GA 30305  
T 404 365 7600  
www.nilesbolton.com  
This drawing, as an instrument of service, is and shall remain the property of the Architects and shall not be reproduced, published or used in any way without the permission of the Architect.

CORTLAND AT ABILENE STATION SITE PLAN WITH ADJUSTMENTS  
BLACKHAWK ST AND 2ND PLACE  
AURORA, COLORADO

OWNER:  
CORTLAND  
3424 PEACHTREE RD NE  
SUITE 300  
ATLANTA, GA 30326

NOT FOR CONSTRUCTION

DATE:  
03.30.22 SUBMITTAL  
06.30.22 SUBMITTAL  
09.19.22 SUBMITTAL

SHEET TITLE:  
ELEVATIONS-  
EXTERIOR - BUILDING  
300

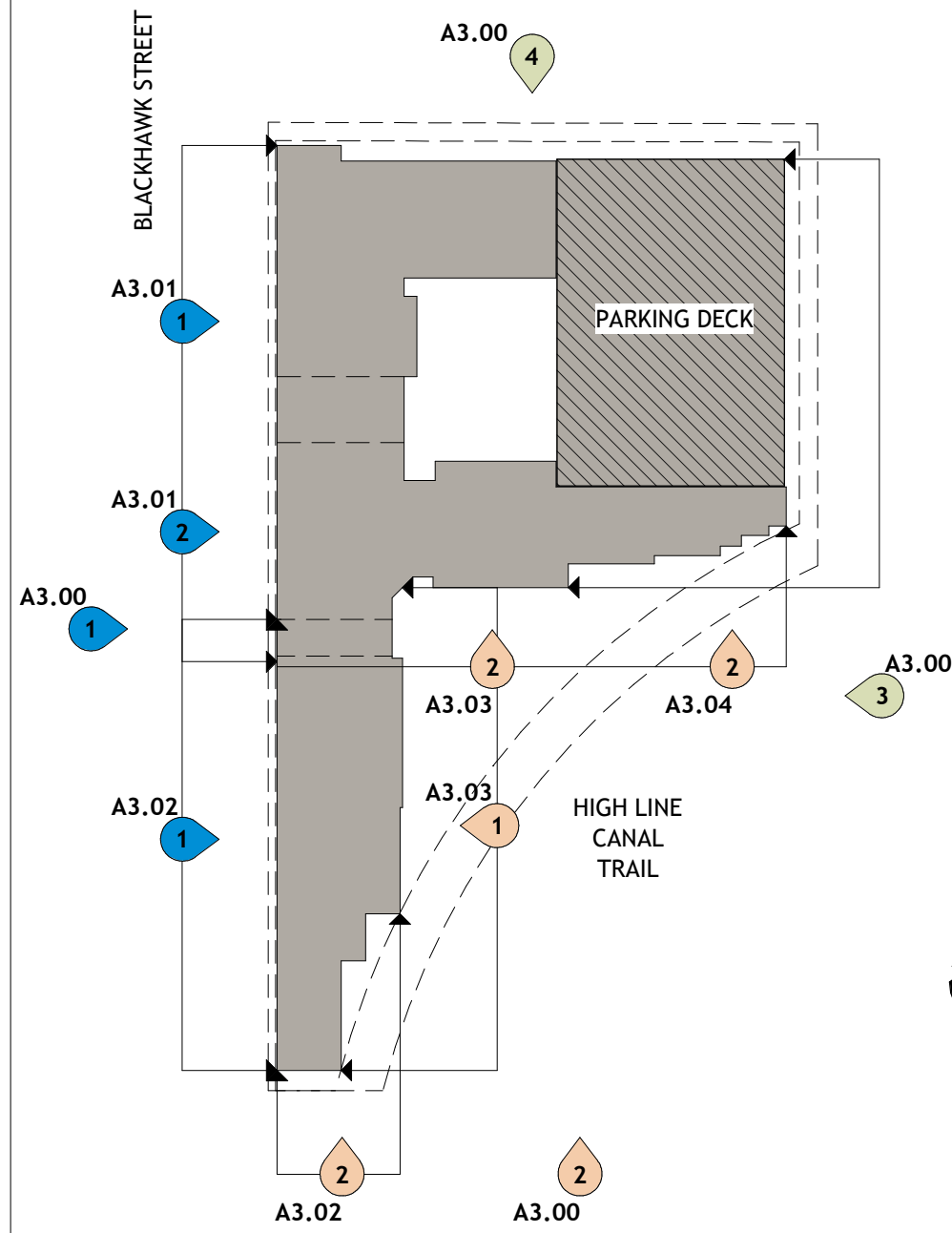


A3.01



## BUILDING 300 KEY PLAN

NOTE: REFER TO BUILDING PLANS FOR ADDITIONAL INFORMATION.  
KEY PLAN IS DIAGMATIC ONLY.



### BUILDING ELEVATION KEY NOTES

Key Value	Keynote Text
BR1	BRICK - ALPINE SELECT
BR2	BRICK - IRON MOUNTAIN
BR3	BRICK SOLDIER/ ROWLOCK COURSE (MATCH ADJACENT COLOR)
BR4	BRICK SOLDIER COURSE (MATCH ADJACENT COLOR)
BR5	BRICK ROWLOCK COURSE (MATCH ADJACENT COLOR)
E01	2 LINE ALUMINUM BALCONY RAIL W/ VERTICAL PICKETS @ 4" O.C. - DARK BRONZE
E02	GLASS BALCONY RAILING
E03	GLASS BALCONY RAILING W/ HANDRAIL
E04	VINYL WINDOWS (SEE SCHEDULE)
E05	BALCONY DOOR (SEE SCHEDULE)
E06	PAINTED METAL DOOR & FRAME (SEE SCHEDULE)
E09	
E20	EXTERIOR LIGHT FIXTURE (SEE RCPS & LIGHTING SCHEDULE)
E21	HOSE BIB CONNECTION (SEE PLUMBING DRAWINGS)
E30	ROOF SHINGLES - COLOR TBD
E31	RIDGE VENT
E32	PREFINISHED METAL COPING - DARK BRONZE
E33	PREFINISHED METAL GUTTER - DARK BRONZE
E34	PREFINISHED METAL DOWNSPOUT - DARK BRONZE
E35	PREFINISHED METAL SCUPPER WITH CONDUCTOR HEAD - DARK BRONZE
E36	PREFINISHED METAL OVER-FLOW SCUPPER - DARK BRONZE
E37	TPO CANOPY ROOF
FC1	FIBER CEMENT - CARIBBEAN CORAL
FC3	FIBER CEMENT - CREWEL TAN
FC4	FIBER CEMENT - PEPPERCORN
FC5	FIBER CEMENT - WILD CURRANT
FC6	FIBER CEMENT - GRAY MATTERS
FC7	FIBER CEMENT LAP SIDING - GRAY MATTERS
G04	FIRE DEPARTMENT KNOX BOX (VERIFY LOCATION WITH AHJ)
G05	HANDRAIL (SEE DETAILS)
G06	ROOF DRAIN WITH INSULATION (SEE PLUMBING PLANS FOR SIZE)
G07	TV LOCATION; COORDINATE MOUNTING HGT., SIZE AND FINAL LOCATION WITH ID DRAWINGS
PC1	PRECAST STRUCTURAL CONCRETE

## EXTERIOR VENEER TAKE OFFS

TOTAL BRICK SF: 34,061 (51%)

TOTAL FC SF: 33,282 (49%)

### NOTE:

1. PARKING DECK NOT INCLUDED.
2. SEE ELEVATIONS FOR BREAKDOWN OF EACH ELEVATION.



SW 7020  
BLACK FOX



SW 0011  
CREWEL  
TAN



IRON  
MOUNTAIN

NOTE: MATCHES B400 AND  
500 BRICK AT GROUND LEVEL  
AND RETAIL ZONES TO  
PROVIDE COMMON MATERIAL  
BETWEEN BUILDINGS.



SW 2854  
CARIBBEAN  
CORAL



PRE-CAST  
PANELS

NOTE: AT PARKING  
GARAGE ONLY.



SW 2837  
AURORA  
BROWN



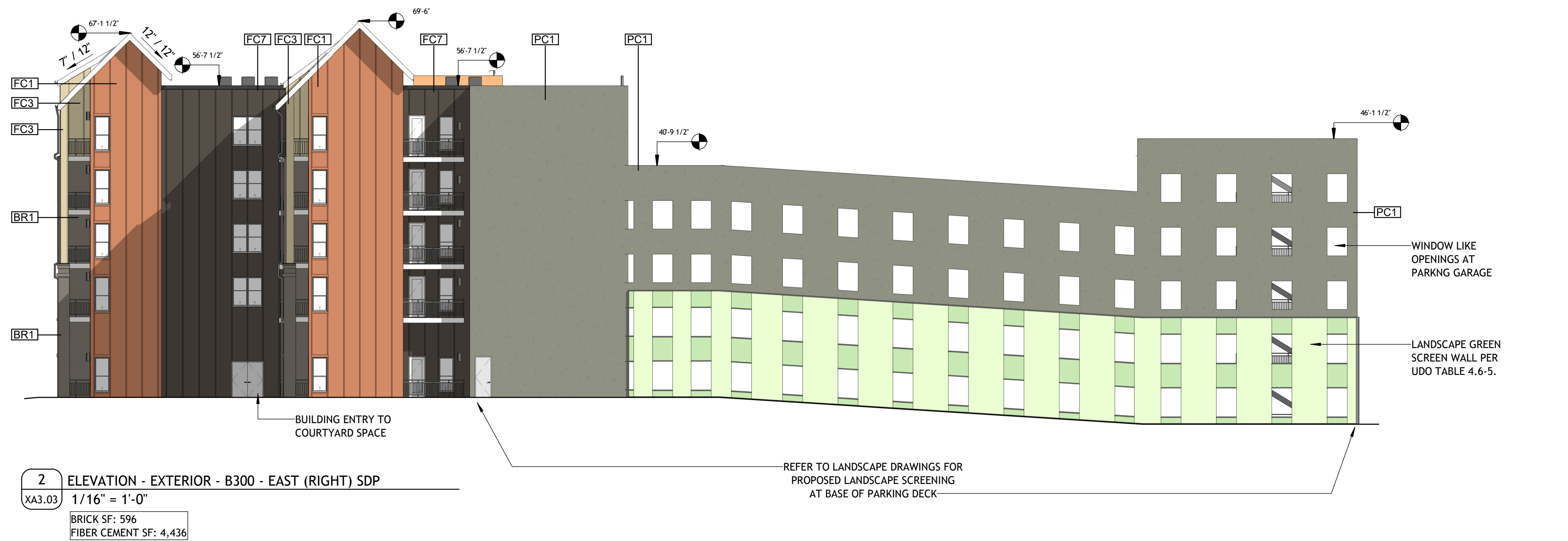
3 ELEVATION - EXTERIOR - B300 - SOUTH (LEFT) SDP  
XA3.02 1/16" = 1'-0"  
BRICK SF: 3,545  
FIBER CEMENT SF: 2,402

2 ELEVATION - EXTERIOR - B300 - SOUTH (RIGHT) SDP  
XA3.02 1/16" = 1'-0"  
BRICK SF: 6,769  
FIBER CEMENT SF: 6,578



1 ELEVATION - EXTERIOR - B300 - EAST (LEFT) SDP  
XA3.02 1/16" = 1'-0"  
BRICK SF: 8,884  
FIBER CEMENT SF: 5,377





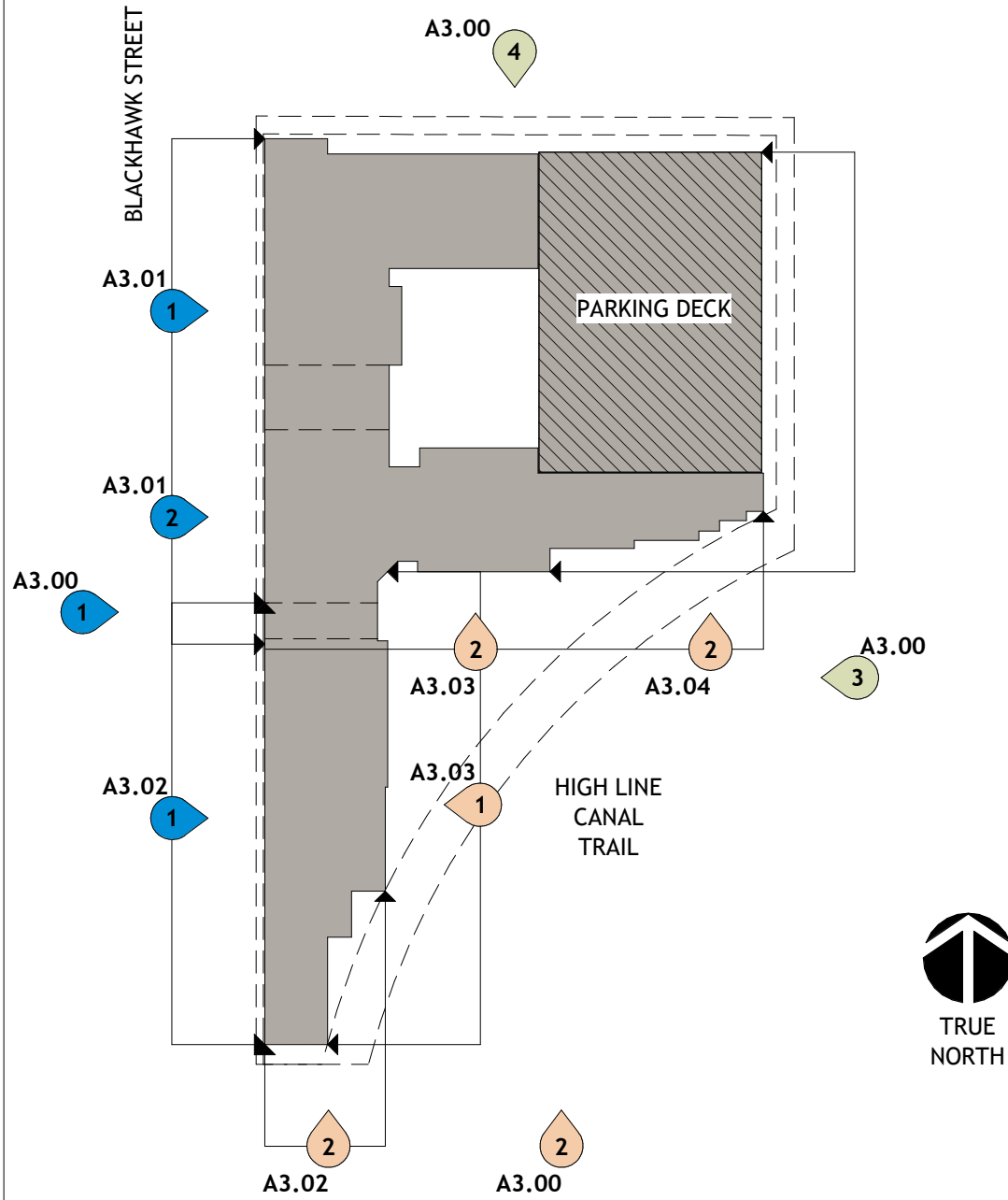
2 ELEVATION - EXTERIOR - B300 - EAST (RIGHT) SDP  
1/16" = 1'-0"  
BRICK SF: 596  
FIBER CEMENT SF: 4,436



1 ELEVATION - EXTERIOR - B300 - NORTH SDP  
1/16" = 1'-0"  
BRICK SF: 4,931  
FIBER CEMENT SF: 4,378

BUILDING 300 KEY PLAN

NOTE: REFER TO BUILDING PLANS FOR ADDITIONAL INFORMATION.  
KEY PLAN IS DIAGRAMMATIC ONLY.



BUILDING ELEVATION KEY NOTES

Key Value	Keynote Text
BR1	BRICK - ALPINE SELECT
BR2	BRICK - IRON MOUNTAIN
BR3	BRICK SOLDIER/ ROWLOCK COURSE (MATCH ADJACENT COLOR)
BR4	BRICK SOLDIER COURSE (MATCH ADJACENT COLOR)
BR5	BRICK ROWLOCK COURSE (MATCH ADJACENT COLOR)
E01	2 LINE ALUMINUM BALCONY RAIL W/ VERTICAL PICKETS @ 4" O.C. - DARK BRONZE
E02	GLASS BALCONY RAILING
E03	GLASS BALCONY RAILING W/ HANDRAIL
E04	VINYL WINDOWS (SEE SCHEDULE)
E05	BALCONY DOOR (SEE SCHEDULE)
E06	PAINTED METAL DOOR & FRAME (SEE SCHEDULE)
E09	
E20	EXTERIOR LIGHT FIXTURE (SEE RCPS & LIGHTING SCHEDULE)
E21	HOSE BIB CONNECTION (SEE PLUMBING DRAWINGS)
E30	ROOF SHINGLES - COLOR TBD
E31	RIDGE VENT
E32	PREFINISHED METAL COPING - DARK BRONZE
E33	PREFINISHED METAL GUTTER - DARK BRONZE
E34	PREFINISHED METAL DOWNSPOUT - DARK BRONZE
E35	PREFINISHED METAL SCUPPER WITH CONDUCTOR HEAD - DARK BRONZE
E36	PREFINISHED METAL OVER-FLOW SCUPPER - DARK BRONZE
E37	TPO CANOPY ROOF
FC1	FIBER CEMENT - CARIBBEAN CORAL
FC3	FIBER CEMENT - CREWEL TAN
FC4	FIBER CEMENT - PEPPERCORN
FC5	FIBER CEMENT - WILD CURRANT
FC6	FIBER CEMENT - GRAY MATTERS
FC7	FIBER CEMENT LAP SIDING - GRAY MATTERS
G04	FIRE DEPARTMENT KNOX BOX (VERIFY LOCATION WITH AHJ)
G05	HANDRAIL (SEE DETAILS)
G06	ROOF DRAIN WITH INSULATION (SEE PLUMBING PLANS FOR SIZE)
G07	TV LOCATION; COORDINATE MOUNTING HGT., SIZE AND FINAL LOCATION WITH ID DRAWINGS
PC1	PRECAST STRUCTURAL CONCRETE

EXTERIOR VENEER TAKE OFFS

TOTAL BRICK SF: 34,061 (51%)

TOTAL FC SF: 33,282 (49%)

- NOTE:  
1. PARKING DECK NOT INCLUDED.  
2. SEE ELEVATIONS FOR BREAKDOWN OF EACH ELEVATION.

	SW 7020 BLACK FOX		SW 0011 CREWEL TAN
	IRON MOUNTAIN NOTE: MATCHES #400 AND 500 BRICK AT GROUND LEVEL AND RETAIL ZONES TO PROVIDE COMMON MATERIAL BETWEEN BUILDINGS.		SW 2854 CARIBBEAN CORAL
	PRE-CAST PANELS NOTE: AT PARKING GARAGE ONLY.		SW 2837 AURORA BROWN

NILES BOLTON  
ASSOCIATES

3060 Peachtree Rd. N.W.  
Suite 600  
Atlanta, GA 30305

T 404 365 7600

www.nilesbolton.com

This drawing, as an instrument of service, is and shall remain the property of the Architects and shall not be reproduced, published or used in any way without the permission of the Architect.

CORTLAND AT ABILENE STATION SITE PLAN WITH ADJUSTMENTS  
BLACKHAWK ST AND 2ND PLACE  
AURORA, COLORADO

OWNER:  
CORTLAND

3424 PEACHTREE RD NE  
SUITE 300  
ATLANTA, GA 30326

NOT FOR  
CONSTRUCTION

DATE:  
03.30.22 SUBMITTAL  
06.30.22 SUBMITTAL  
09.19.22 SUBMITTAL

SHEET TITLE:  
ELEVATIONS -  
EXTERIOR - BUILDING  
300



A3.03



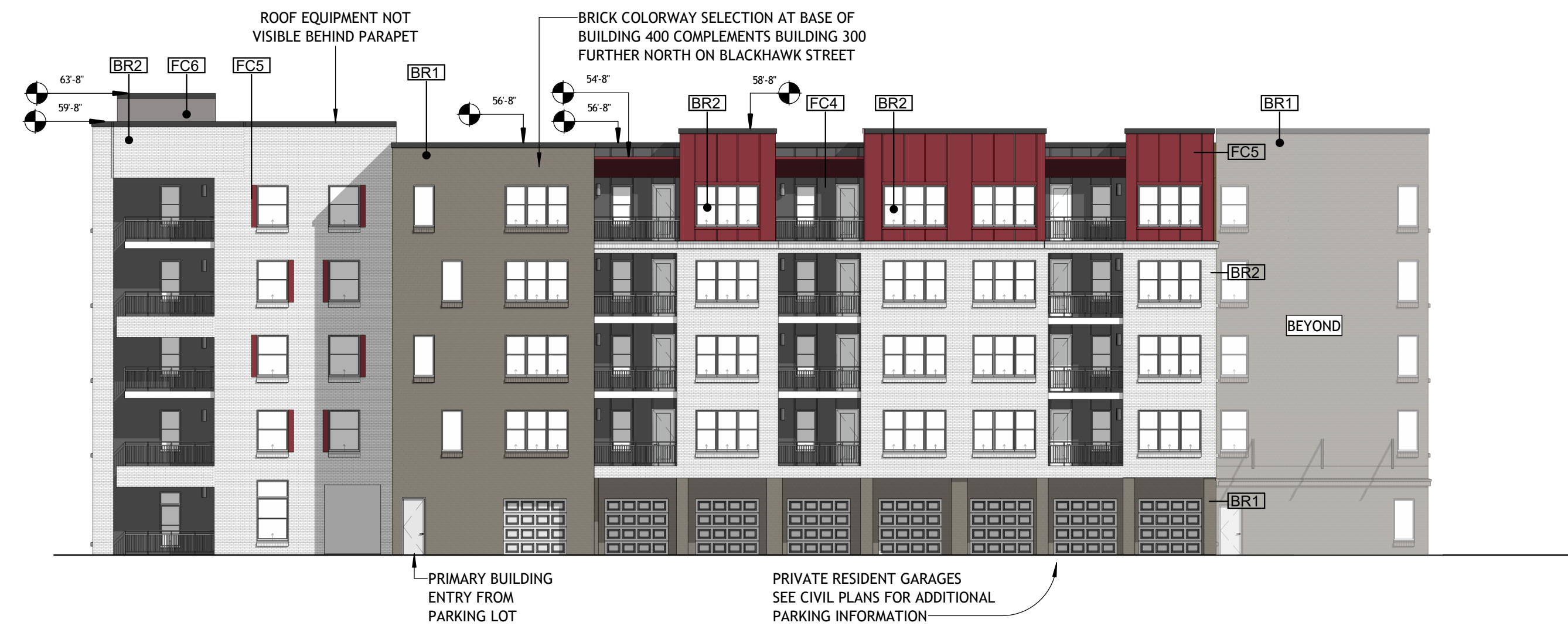
NOTE: LANDSCAPE INFORMATION IS NOT SHOWN AND IS TO BE REFERENCED ON LANDSCAPE PLANS.



BUILDING 400 - LOOKING NORTH FROM EXISTING HIGH LINE CANAL TRAIL



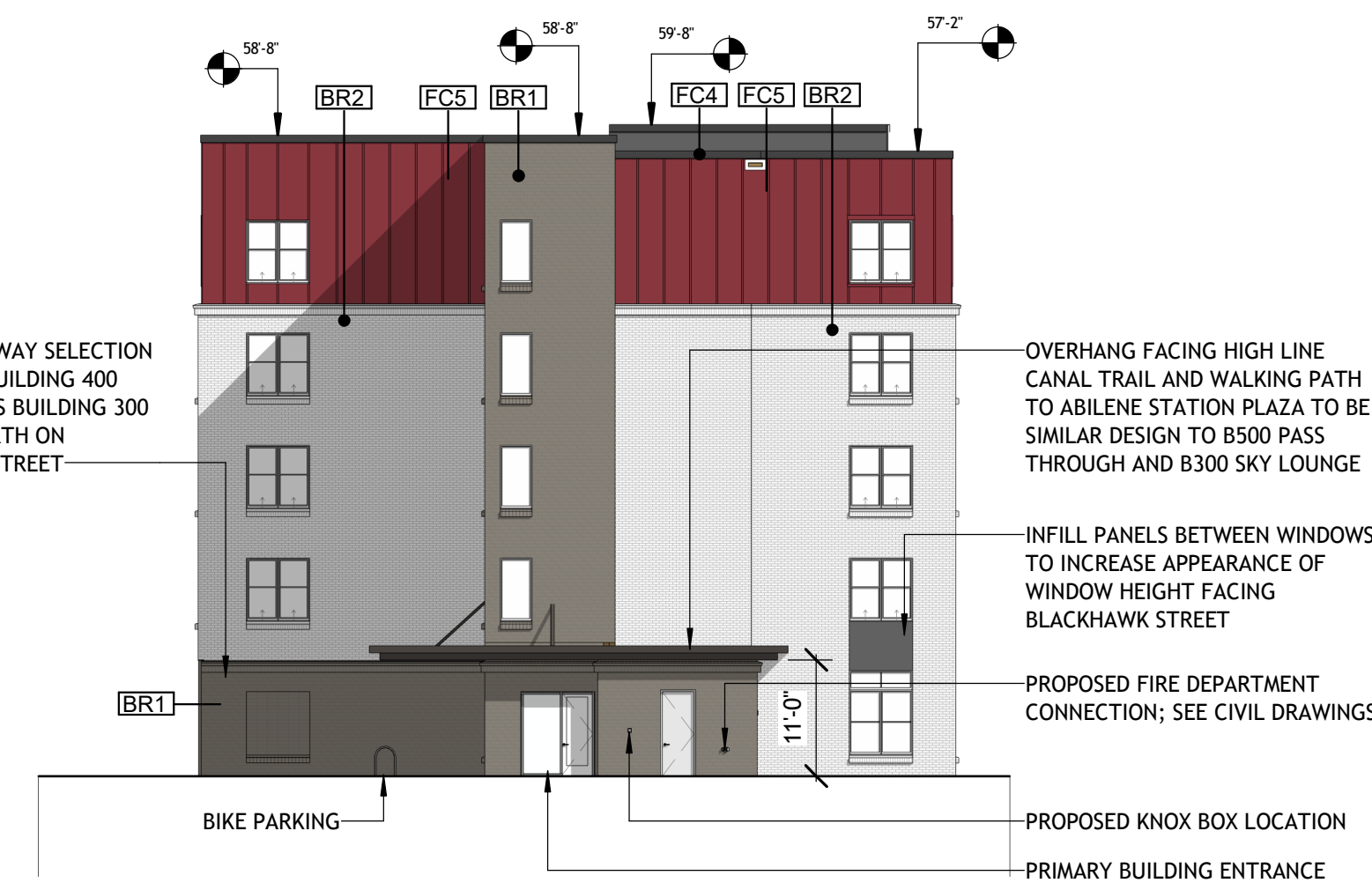
BUILDING 400 - ON RIGHT  
VIEW DRIVING EAST ON BLACKHAWK STREET FROM E 2ND AVENUE



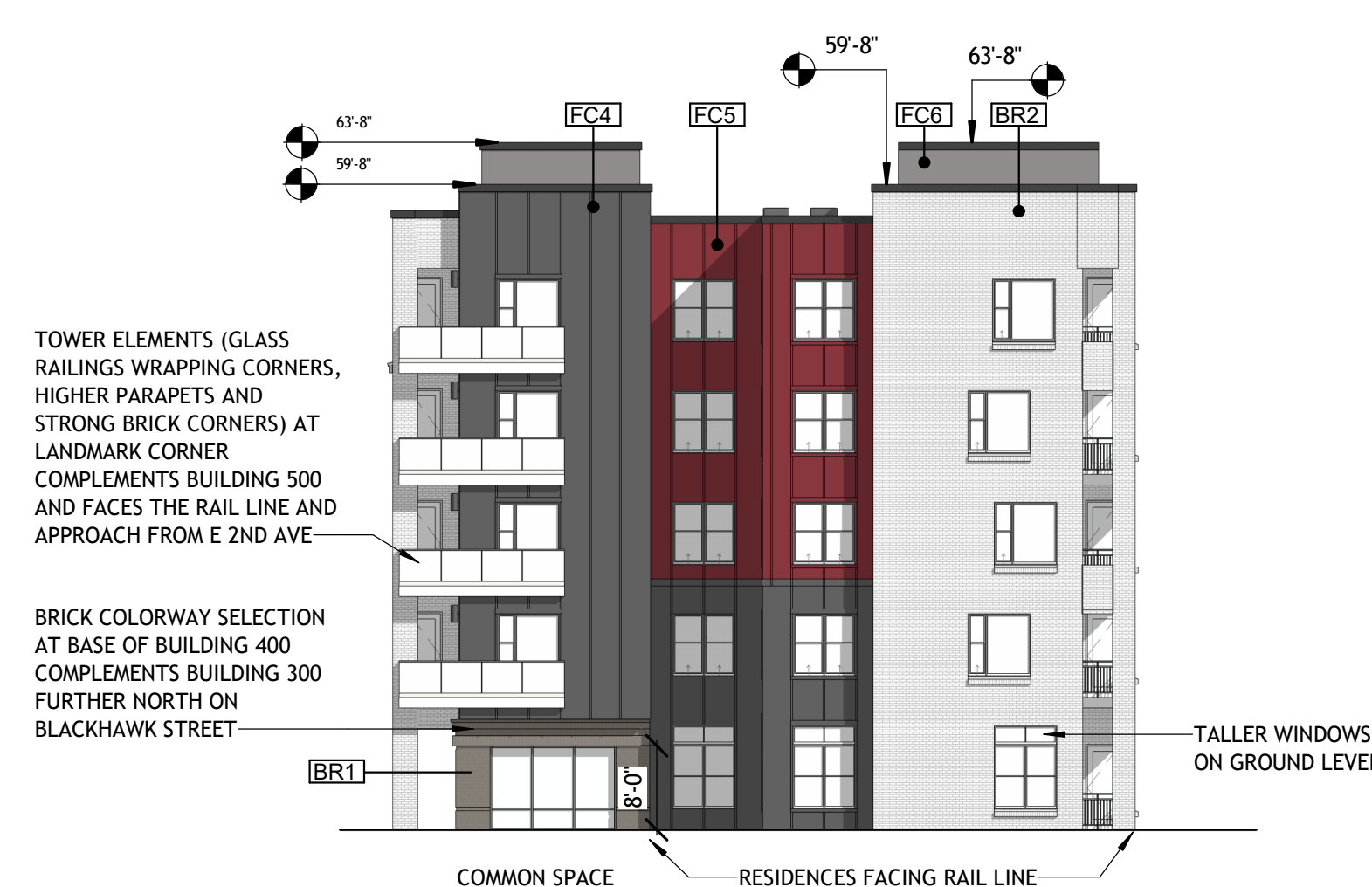
BRICK SF: 8,441  
FIBER CEMENT SF: 2,876



BRICK SF: 6,403  
FIBER CEMENT SF: 4,433

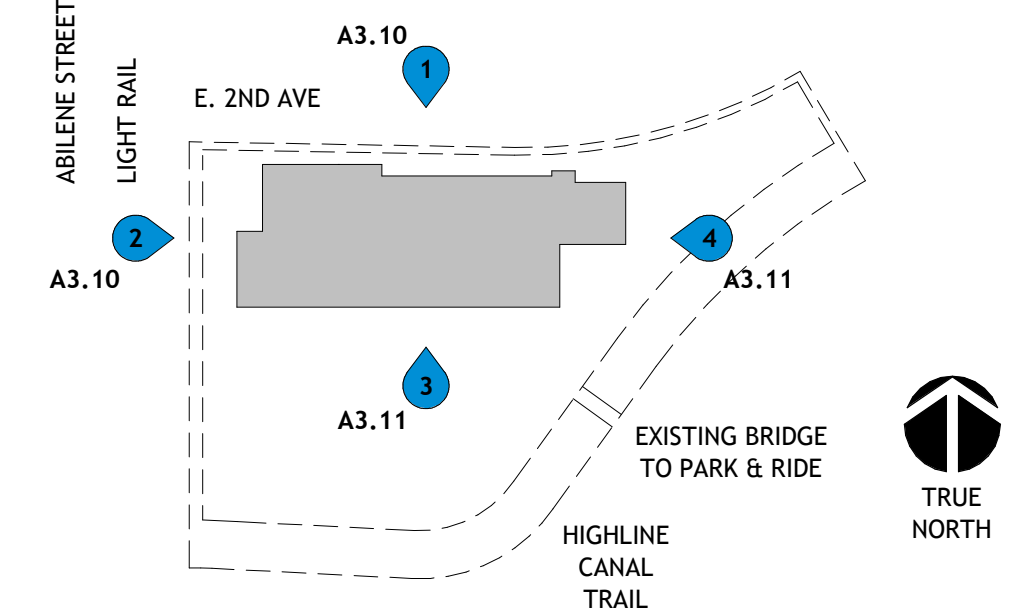


BRICK SF: 4,659  
FIBER CEMENT SF: 819



BRICK SF: 1,507
FIBER CEMENT SF: 1,75

NOTE: REFER TO BUILDING PLANS FOR ADDITIONAL INFORMATION.  
KEY PLAN IS DIAGRAMMATIC ONLY.



BUILDING ELEVATION KEY NOTES	
Key Value	Keynote Text
BR1	BRICK - ALPINE SELECT
BR2	BRICK - IRON MOUNTAIN
BR3	BRICK SOLDIER/ ROWLOCK COURSE (MATCH ADJACENT COLOR)
BR4	BRICK SOLDIER COURSE (MATCH ADJACENT COLOR)
BR5	BRICK ROWLOCK COURSE (MATCH ADJACENT COLOR)
E01	2 LINE ALUMINUM BALCONY RAIL W/ VERTICAL PICKETS @ 4" O.C. - DARK BRONZE
E02	GLASS BALCONY RAILING
E03	GLASS BALCONY RAILING W/ HANDRAIL
E04	VINYL WINDOWS (SEE SCHEDULE)
E05	BALCONY DOOR (SEE SCHEDULE)
E06	PAINTED METAL DOOR & FRAME (SEE SCHEDULE)
E09	
E20	EXTERIOR LIGHT FIXTURE (SEE RCPS & LIGHTING SCHEDULE)
E21	HOSE BIB CONNECTION (SEE PLUMBING DRAWINGS)
E30	ROOF SHINGLES - COLOR TBD
E31	RIDGE VENT
E32	PREFINISHED METAL COPING - DARK BRONZE
E33	PREFINISHED METAL GUTTER - DARK BRONZE
E34	PREFINISHED METAL DOWNSPOUT - DARK BRONZE
E35	PREFINISHED METAL SCUPPER WITH CONDUCTOR HEAD - DARK BRONZE
E36	PREFINISHED METAL OVER-FLOW SCUPPER - DARK BRONZE
E37	TPO CANOPY ROOF
FC1	FIBER CEMENT - CARIBBEAN CORAL
FC3	FIBER CEMENT - CREWEL TAN
FC4	FIBER CEMENT - PEPPER CORN
FC5	FIBER CEMENT - WILD CURRANT
FC6	FIBER CEMENT - GRAY MATTERS
FC7	FIBER CEMENT LAP SIDING - GRAY MATTERS
G04	FIRE DEPARTMENT KNOX BOX (VERIFY LOCATION WITH AHJ)
G05	HANDRAIL (SEE DETAILS)
G06	ROOF DRAIN WITH INSULATION (SEE PLUMBING PLANS FOR SIZE)
G07	TV LOCATION; COORDINATE MOUNTING HGT., SIZE AND FINAL LOCATION WITH ID DRAWINGS
PC1	PRECAST STRUCTURAL CONCRETE

TOTAL BRICK SF: 21,010 (68%)  
TOTAL FC SF: 9,878 (32%)

NOTE:

1. PARKING DECK NOT INCLUDED.
2. SEE ELEVATIONS FOR BREAKDOWN OF EACH ELEVATION.

	SW 7066 GRAY MATTERS		IRON MOUNTAIN
	SW 7674 PEPPERCORN		ALPINE SELECT
	SW 7583 WILD CURRANT		PRE-CAST PANELS
		<div>NOTE: AT PARKING GARAGE ONLY.</div>	

424 PEACHTREE RD NE  
SUITE 300  
ATLANTA, GA 30326

NOT FOR  
CONSTRUCTION

DATE:
03.30.22 SUBMITTAL
06.30.22 SUBMITTAL
09.19.22 SUBMITTAL

HEET TITLE:  
ELEVATIONS-  
TERIOR- BUILDING  
400



## BUILDING 500 PERSPECTIVE

NOTE: LANDSCAPE INFORMATION IS NOT SHOWN AND IS TO BE REFERENCED ON LANDSCAPE PLANS.



BUILDING 500 - LOOKING AT PASS THROUGH FROM BLACKHAWK STREET ONCE VISITORS ARE OFF THE HIGH LINE CANAL TRAIL



SW 7066  
GRAY  
MATTERS

SW 7674  
PEPPERCORN  
WILD  
CURRANT

SW 7583  
IRON  
MOUNTAIN



IRON  
MOUNTAIN



ALPINE  
SELECT



PRE-CAST  
PANELS

NOTE: AT PARKING GARAGE ONLY.

BUILDING ELEVATION KEY NOTES		BUILDING ELEVATION KEY NOTES	
Key Value	Keynote Text	Key Value	Keynote Text
BR1	BRICK - ALPINE SELECT	E33	PREFINISHED METAL GUTTER - DARK BRONZE
BR2	BRICK - IRON MOUNTAIN	E34	PREFINISHED METAL DOWNSPOUT - DARK BRONZE
BR3	BRICK SOLDIER/ ROWLOCK COURSE (MATCH ADJACENT COLOR)	E35	PREFINISHED METAL SCUPPER WITH CONDUCTOR HEAD - DARK BRONZE
BR4	BRICK SOLDIER COURSE (MATCH ADJACENT COLOR)	E36	PREFINISHED METAL OVER-FLOW SCUPPER - DARK BRONZE
BR5	BRICK ROWLOCK COURSE (MATCH ADJACENT COLOR)	E37	TPO CANOPY ROOF
E01	2 LINE ALUMINUM BALCONY RAIL W/ VERTICAL PICKETS @ 4" O.C. - DARK BRONZE	FC1	FIBER CEMENT - CARIBBEAN CORAL
E02	GLASS BALCONY RAILING	FC3	FIBER CEMENT - CREWEL TAN
E03	GLASS BALCONY RAILING W/ HANDRAIL	FC4	FIBER CEMENT - PEPPERCORN
E04	VINYL WINDOWS (SEE SCHEDULE)	FC5	FIBER CEMENT - WILD CURRANT
E05	BALCONY DOOR (SEE SCHEDULE)	FC6	FIBER CEMENT - GRAY MATTERS
E06	PAINTED METAL DOOR & FRAME (SEE SCHEDULE)	FC7	FIBER CEMENT LAP SIDING - GRAY MATTERS
E09		G04	FIRE DEPARTMENT KNOX BOX (VERIFY LOCATION WITH AHJ)
E20	EXTERIOR LIGHT FIXTURE (SEE RCPS & LIGHTING SCHEDULE)	G05	HANDRAIL (SEE DETAILS)
E21	HOSE BIB CONNECTION (SEE PLUMBING DRAWINGS)	G06	ROOF DRAIN WITH INSULATION (SEE PLUMBING PLANS FOR SIZE)
E30	ROOF SHINGLES - COLOR TBD	G07	TV LOCATION: COORDINATE MOUNTING HGT., SIZE AND FINAL LOCATION WITH ID DRAWINGS
E31	RIDGE VENT	PC1	PRECAST STRUCTURAL CONCRETE
E32	PREFINISHED METAL COPING - DARK BRONZE		

## EXTERIOR VENEER TAKE OFFS

TOTAL BRICK SF: 57,269 (59%)

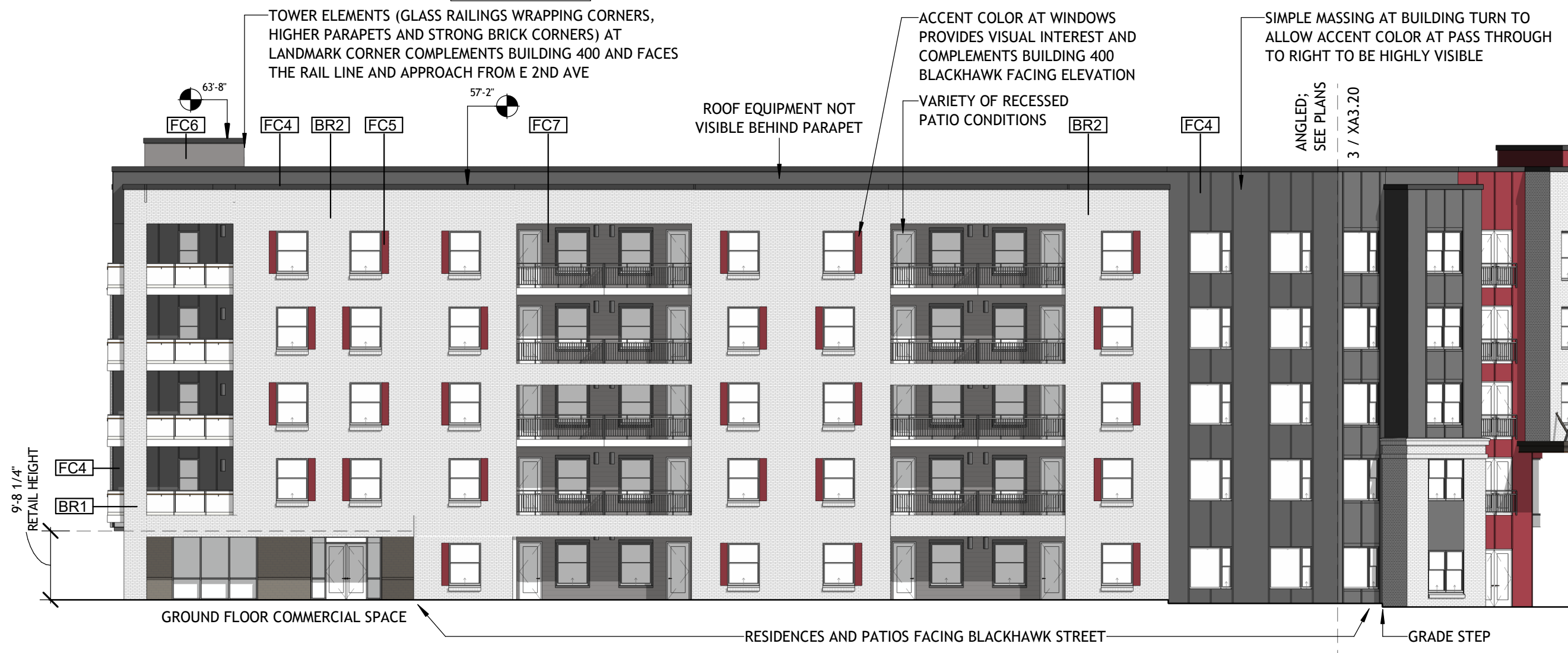
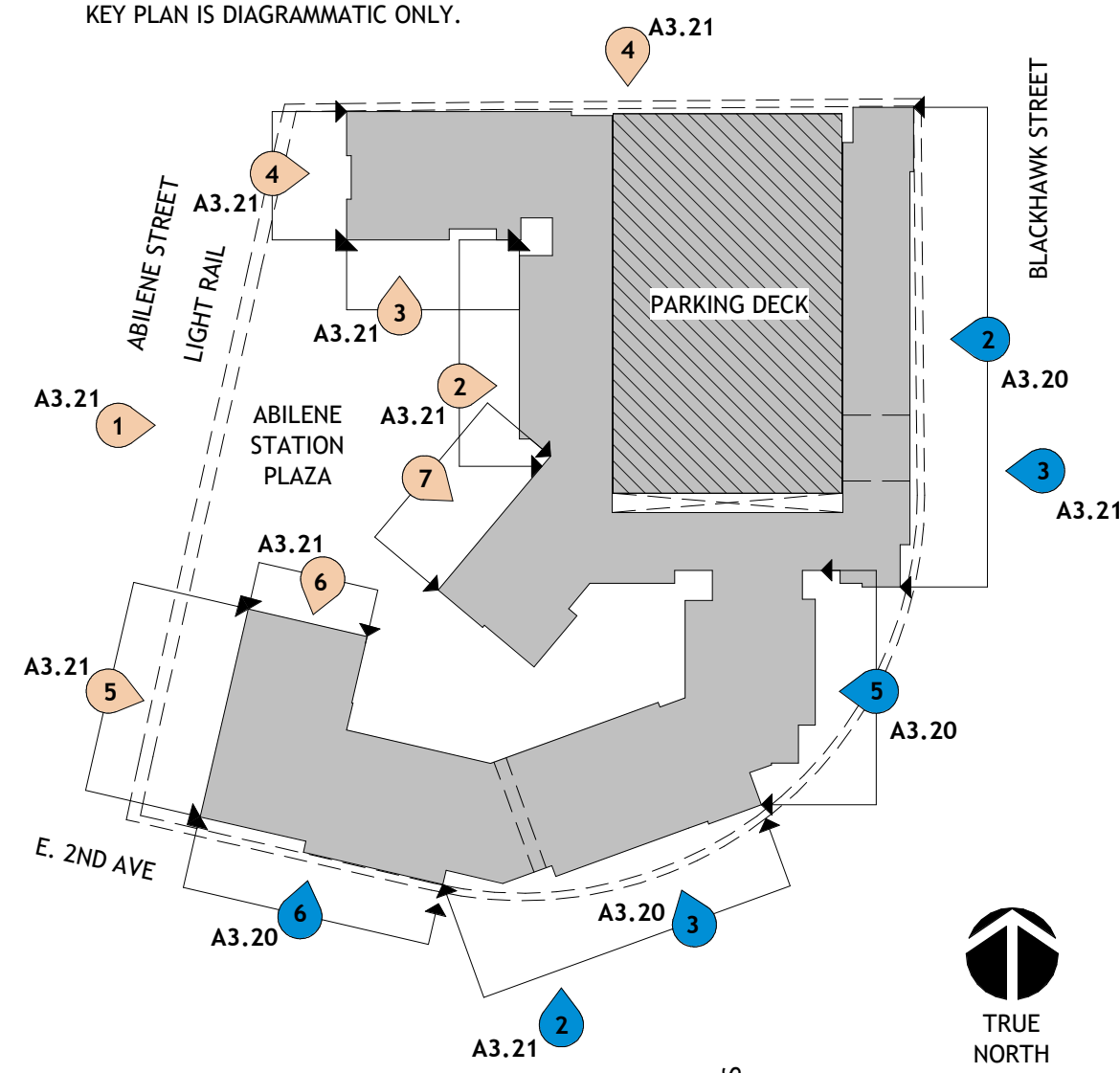
TOTAL FC SF: 40,317 (41%)

NOTE:

1. PARKING DECK NOT INCLUDED.
2. SEE ELEVATIONS FOR BREAKDOWN OF EACH ELEVATION.

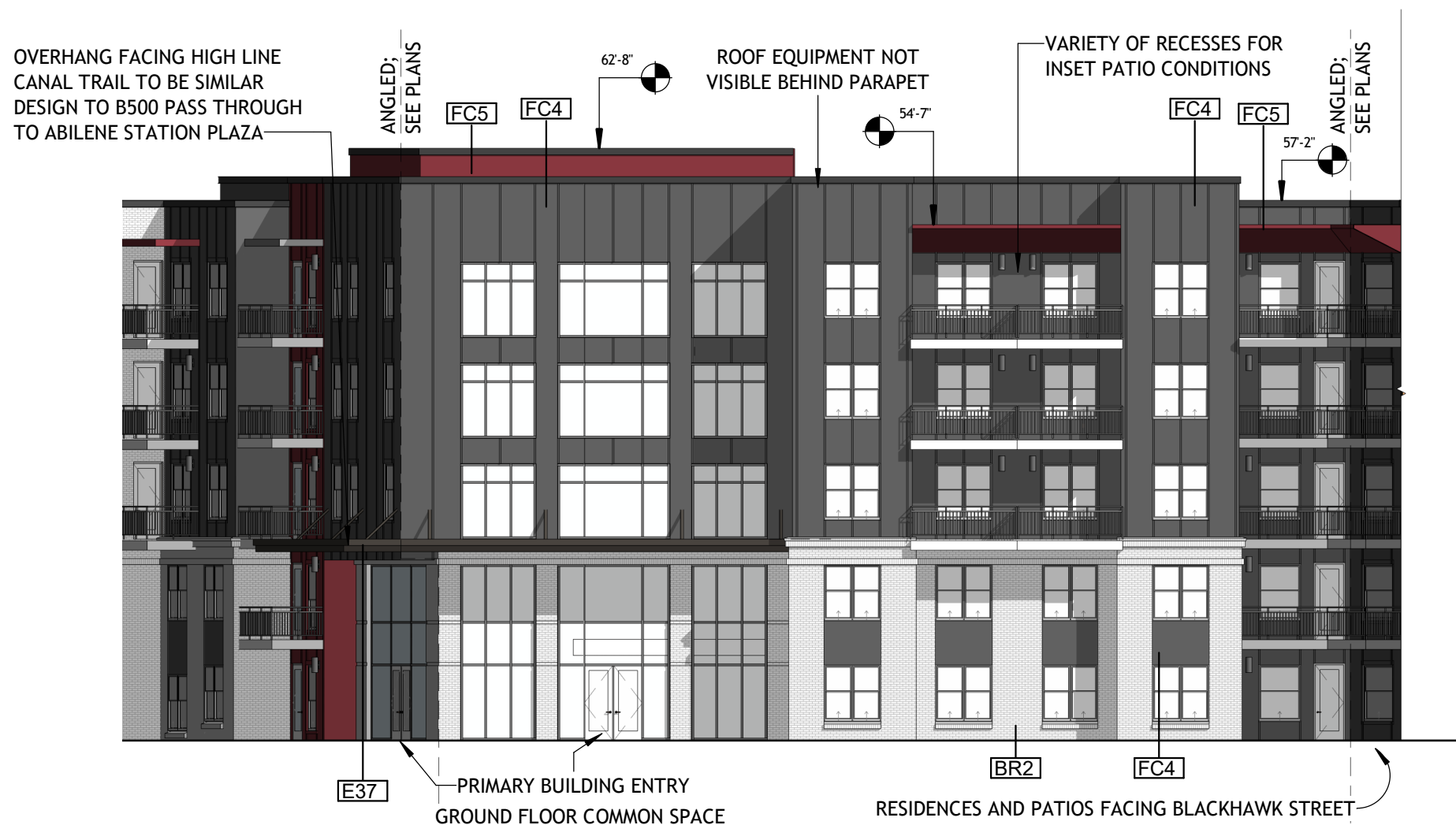
## BUILDING 500 KEY PLAN

NOTE: REFER TO BUILDING PLANS FOR ADDITIONAL INFORMATION. KEY PLAN IS DIAGRAMMATIC ONLY.



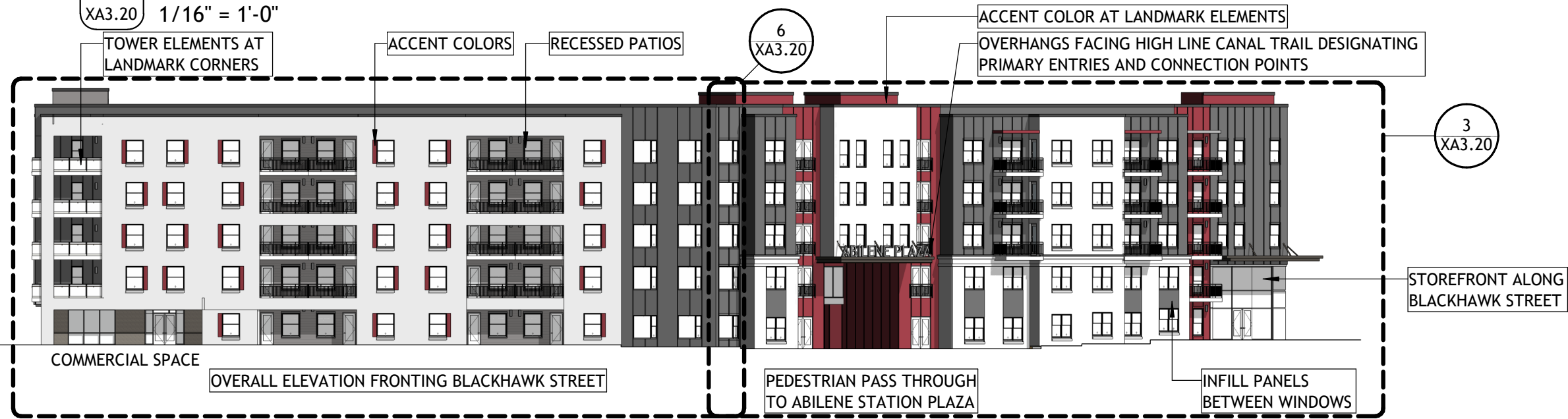
6 ELEVATION - EXTERIOR - B500 - SOUTH (LEFT)  
XA3.20 1/16" = 1'-0"

BRICK SF: 5,987  
FIBER CEMENT SF: 3,829

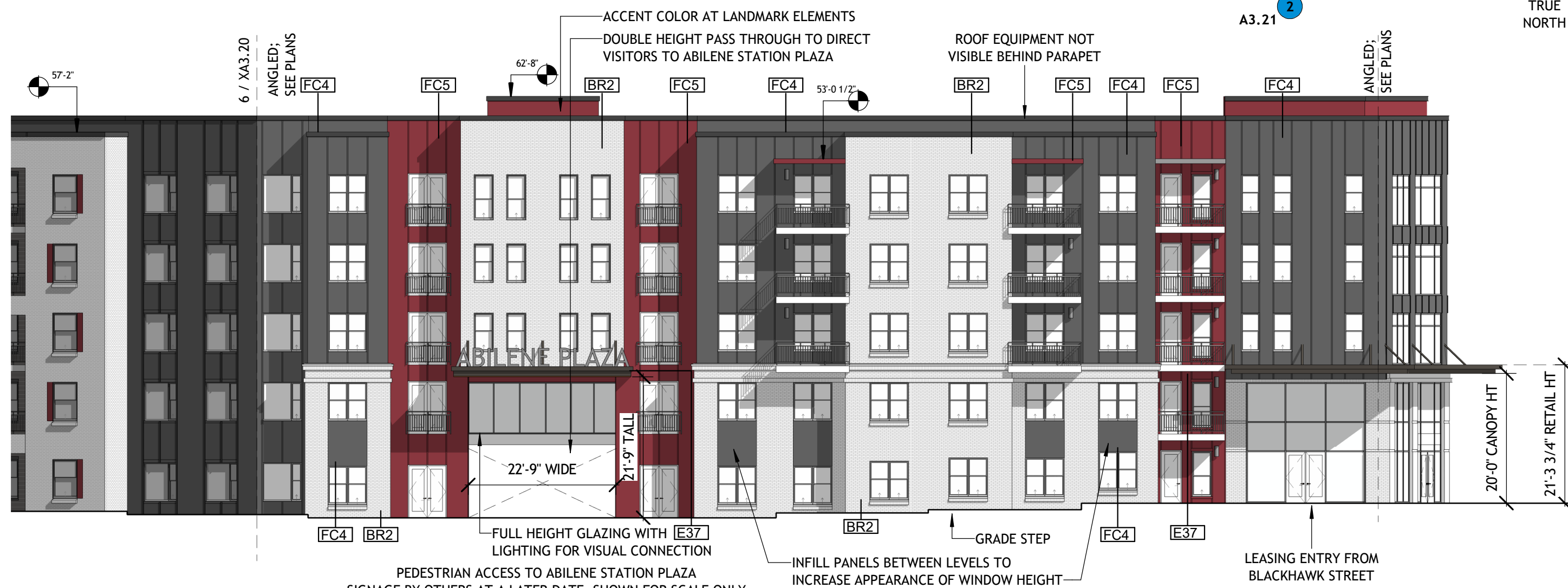


5 ELEVATION - EXTERIOR - B500 - EAST (LEFT)  
XA3.20 1/16" = 1'-0"

BRICK SF: 1,464  
FIBER CEMENT SF: 2,827

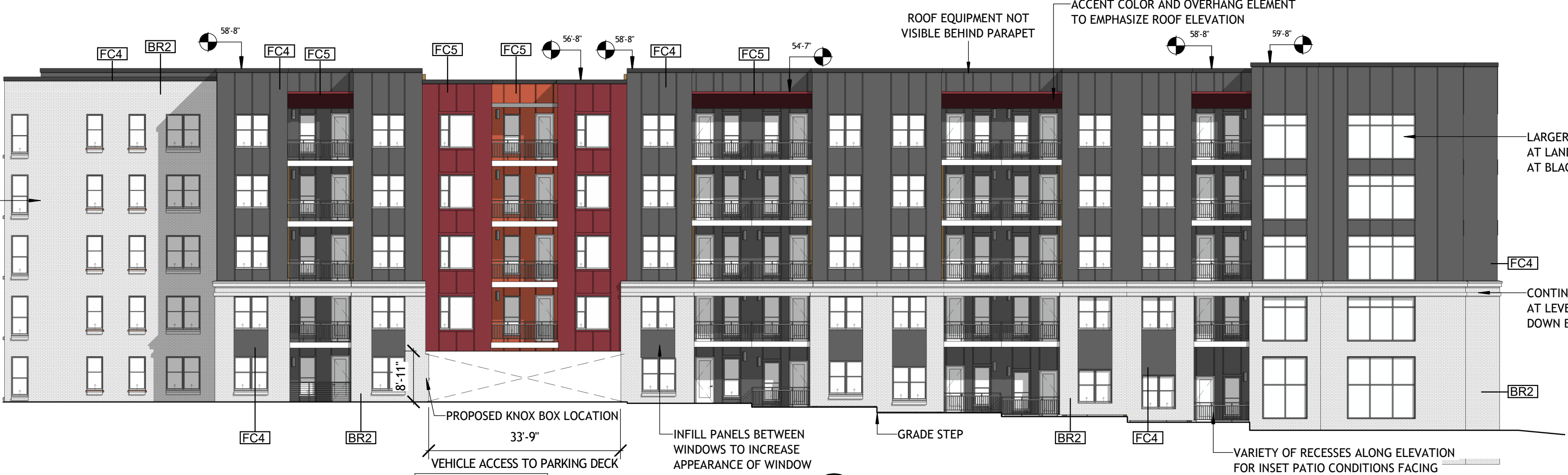


4 ELEVATION - EXTERIOR - B500 - SOUTH (OVERALL) SDP  
XA3.20 1/32" = 1'-0"



3 ELEVATION - EXTERIOR - B500 - SOUTH (RIGHT)  
XA3.20 1/16" = 1'-0"

BRICK SF: 4,098  
FIBER CEMENT SF: 4,453



2 ELEVATION - EXTERIOR - B500 - EAST (RIGHT)  
XA3.20 1/16" = 1'-0"

BRICK SF: 5,260  
FIBER CEMENT SF: 6,985



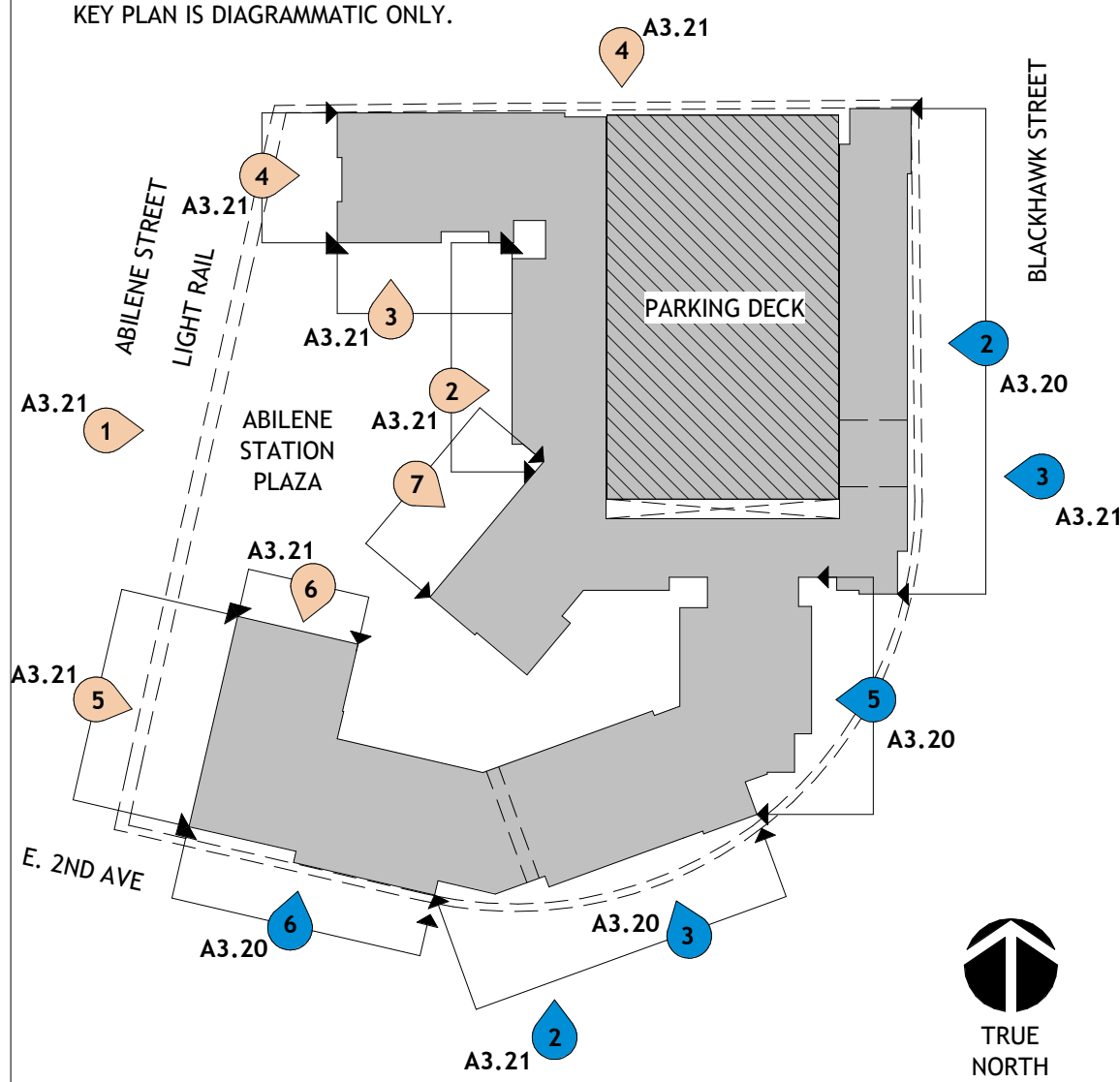
1 ELEVATION - EXTERIOR - B500 - EAST (OVERALL) SDP  
XA3.20 1/32" = 1'-0"

BRICK SF: 5,260  
FIBER CEMENT SF: 6,985



## BUILDING 500 KEY PLAN

NOTE: REFER TO BUILDING PLANS FOR ADDITIONAL INFORMATION.  
KEY PLAN IS DIAGRAMMATIC ONLY.



### BUILDING ELEVATION KEY NOTES

Key Value	Keynote Text
BR1	BRICK - ALPINE SELECT
BR2	BRICK - IRON MOUNTAIN
BR3	BRICK SOLDIER/ ROWLOCK COURSE (MATCH ADJACENT COLOR)
BR4	BRICK SOLDIER COURSE (MATCH ADJACENT COLOR)
BR5	BRICK ROWLOCK COURSE (MATCH ADJACENT COLOR)
E01	2 LINE ALUMINUM BALCONY RAIL W/ VERTICAL PICKETS @ 4" O.C. - DARK BRONZE
E02	GLASS BALCONY RAILING
E03	GLASS BALCONY RAILING W/ HANDRAIL
E04	VINYL WINDOWS (SEE SCHEDULE)
E05	BALCONY DOOR (SEE SCHEDULE)
E06	PAINTED METAL DOOR & FRAME (SEE SCHEDULE)
E09	
E20	EXTERIOR LIGHT FIXTURE (SEE RCPS & LIGHTING SCHEDULE)
E21	HOSE BIB CONNECTION (SEE PLUMBING DRAWINGS)
E30	ROOF SHINGLES - COLOR TBD
E31	RIDGE VENT
E32	PREFINISHED METAL COPING - DARK BRONZE
E33	PREFINISHED METAL GUTTER - DARK BRONZE
E34	PREFINISHED METAL DOWNSPOUT - DARK BRONZE
E35	PREFINISHED METAL SCUPPER WITH CONDUCTOR HEAD - DARK BRONZE
E36	PREFINISHED METAL OVER-FLOW SCUPPER - DARK BRONZE
E37	TPO CANOPY ROOF
FC1	FIBER CEMENT - CARIBBEAN CORAL
FC3	FIBER CEMENT - CREWEL TAN
FC4	FIBER CEMENT - PEPPERCORN
FC5	FIBER CEMENT - WILD CURRANT
FC6	FIBER CEMENT - GRAY MATTERS
FC7	FIBER CEMENT LAP SIDING - GRAY MATTERS
G04	FIRE DEPARTMENT KNOX BOX (VERIFY LOCATION WITH AHJ)
G05	HANDRAIL (SEE DETAILS)
G06	ROOF DRAIN WITH INSULATION (SEE PLUMBING PLANS FOR SIZE)
G07	TV LOCATION; COORDINATE MOUNTING HGT., SIZE AND FINAL LOCATION WITH ID DRAWINGS
PC1	PRECAST STRUCTURAL CONCRETE

## EXTERIOR VENEER TAKE OFFS

TOTAL BRICK SF: 57,269 (59%)

TOTAL FC SF: 40,317 (41%)

### NOTE:

1. PARKING DECK NOT INCLUDED.
2. SEE ELEVATIONS FOR BREAKDOWN OF EACH ELEVATION.

	SW 7066 GRAY MATTERS		IRON MOUNTAIN
	SW 7674 PEPPERCORN		ALPINE SELECT
	SW 7583 WILD CURRANT		PRE-CAST PANELS NOTE: AT PARKING GARAGE ONLY.





BUILDING 500 PERSPECTIVES & VIEW OF ABILENE STATION PLAZA AND PROPOSED FRONTAGE ELEVATIONS

NOTE: LANDSCAPE INFORMATION IS NOT SHOWN AND IS TO BE REFERENCED ON LANDSCAPE PLANS.



BUILDING 500 - LOOKING AT ABILENE STATION PLAZA FROM RAIL LINE



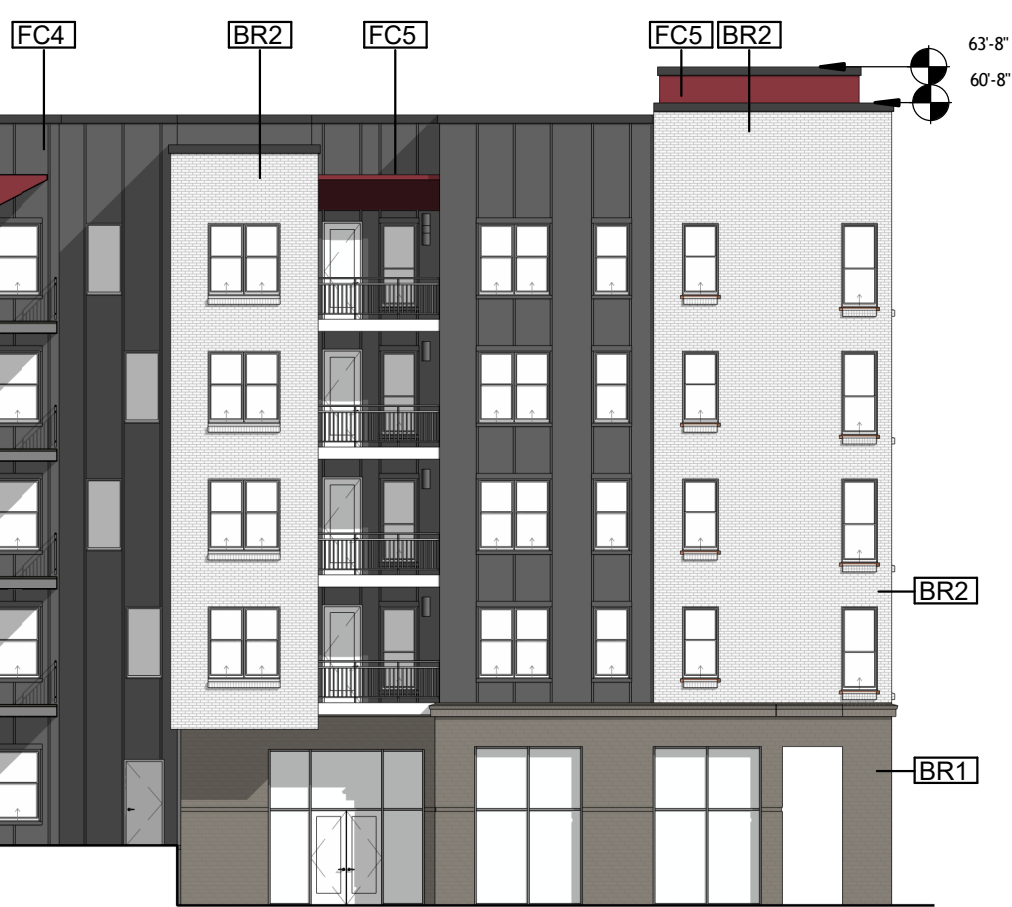
BUILDING 500 - VIEW LOOKING EAST DOWN E 2ND AVENUE AND BLACKHAWK STREET INTERSECTION



BUILDING 500 - LOOKING NORTH FROM HIGH LINE CANAL TRAIL



BUILDING 500 - LOOKING AT PASS THROUGH FROM COMMERCIAL PLAZA



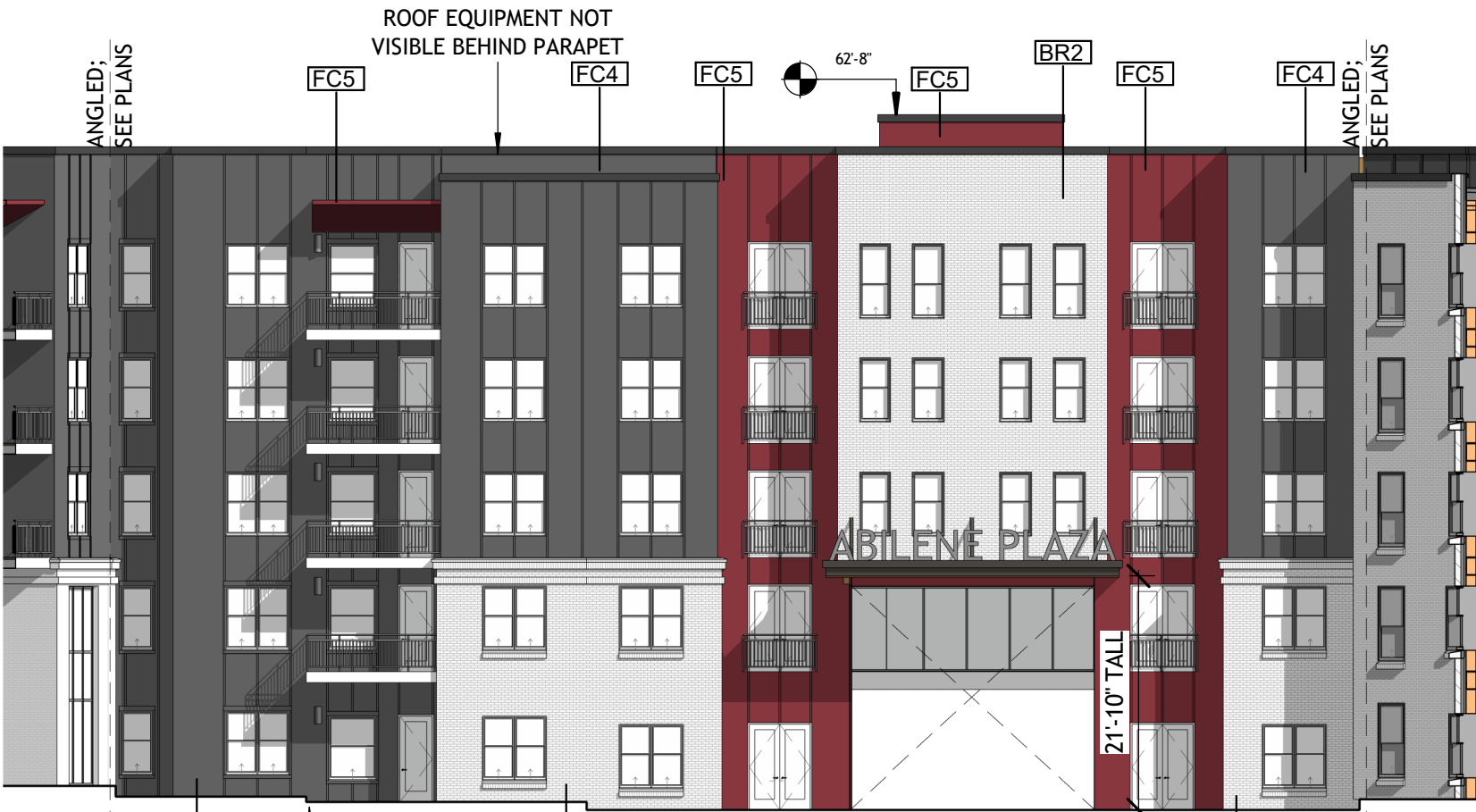
5 ELEVATION - EXTERIOR - B500 - PLAZA (SOUTH/RIGHT) BRICK SF: 2,884 FIBER CEMENT SF: 1,901 XA3.22 1/16" = 1'-0"



4 ELEVATION - EXTERIOR - B500 - PRIVATE COURTYARD (EAST) BRICK SF: 2,226 FIBER CEMENT SF: 2,252 XA3.22 1/16" = 1'-0"



1 ELEVATION - EXTERIOR - B500 - PRIVATE COURTYARD (SOUTH) BRICK SF: 2,661 FIBER CEMENT SF: 1,342 XA3.22 1/16" = 1'-0"



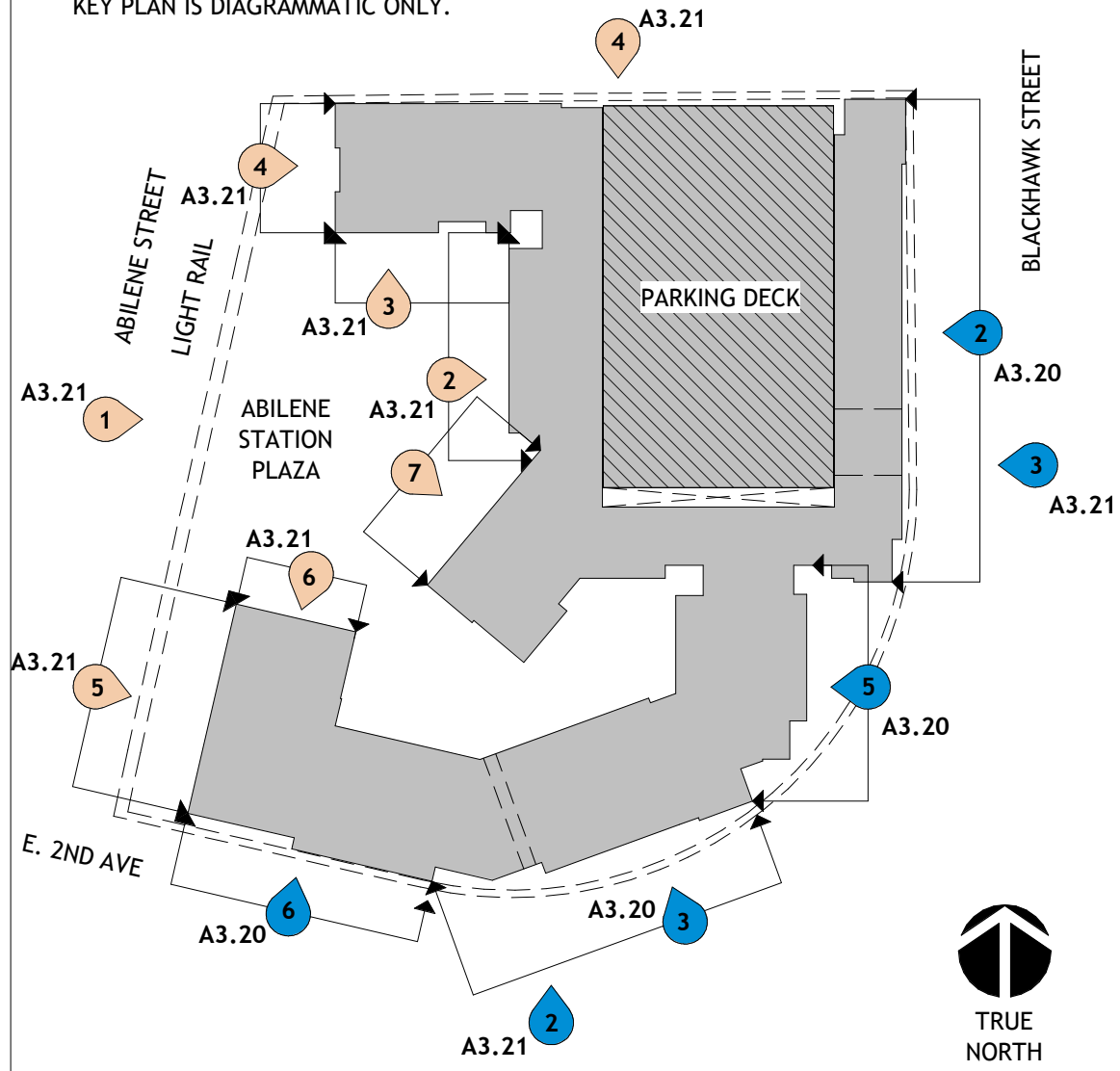
2 ELEVATION - EXTERIOR - B500 - PRIVATE COURTYARD (WEST/RIGHT) SDP BRICK SF: 2,353 FIBER CEMENT SF: 3,356 XA3.22 1/16" = 1'-0"



3 ELEVATION - EXTERIOR - B500 - PRIVATE COURTYARD - (WEST/LEFT) SDP BRICK SF: 928 FIBER CEMENT SF: 1,932 XA3.22 1/16" = 1'-0"

BUILDING 500 KEY PLAN

NOTE: REFER TO BUILDING PLANS FOR ADDITIONAL INFORMATION. KEY PLAN IS DIAGRAMMATIC ONLY.



BUILDING ELEVATION KEY NOTES	
Key Value	Keynote Text
BR1	BRICK - ALPINE SELECT
BR2	BRICK - IRON MOUNTAIN
BR3	BRICK SOLDIER/ ROWLOCK COURSE (MATCH ADJACENT COLOR)
BR4	BRICK SOLDIER COURSE (MATCH ADJACENT COLOR)
BR5	BRICK ROWLOCK COURSE (MATCH ADJACENT COLOR)
E01	2 LINE ALUMINUM BALCONY RAIL W/ VERTICAL PICKETS @ 4" O.C. - DARK BRONZE
E02	GLASS BALCONY RAILING
E03	GLASS BALCONY RAILING W/ HANDRAIL
E04	VINYL WINDOWS (SEE SCHEDULE)
E05	BALCONY DOOR (SEE SCHEDULE)
E06	PAINTED METAL DOOR & FRAME (SEE SCHEDULE)
E09	
E20	EXTERIOR LIGHT FIXTURE (SEE RCPS & LIGHTING SCHEDULE)
E21	HOSE BIB CONNECTION (SEE PLUMBING DRAWINGS)
E30	ROOF SHINGLES - COLOR TBD
E31	RIDGE VENT
E32	PREFINISHED METAL COPING - DARK BRONZE
E33	PREFINISHED METAL GUTTER - DARK BRONZE
E34	PREFINISHED METAL DOWNSPOUT - DARK BRONZE
E35	PREFINISHED METAL SCUPPER WITH CONDUCTOR HEAD - DARK BRONZE
E36	PREFINISHED METAL OVER-FLOW SCUPPER - DARK BRONZE
E37	TPO CANOPY ROOF
FC1	FIBER CEMENT - CARIBBEAN CORAL
FC3	FIBER CEMENT - CREWEL TAN
FC4	FIBER CEMENT - PEPPERCORN
FC5	FIBER CEMENT - WILD CURRANT
FC6	FIBER CEMENT - GRAY MATTERS
FC7	FIBER CEMENT LAP SIDING - GRAY MATTERS
G04	FIRE DEPARTMENT KNOX BOX (VERIFY LOCATION WITH AHJ)
G05	HANDRAIL (SEE DETAILS)
G06	ROOF DRAIN WITH INSULATION (SEE PLUMBING PLANS FOR SIZE)
G07	TV LOCATION; COORDINATE MOUNTING HGT., SIZE AND FINAL LOCATION WITH ID DRAWINGS
PC1	PRECAST STRUCTURAL CONCRETE

EXTERIOR VENEER TAKE OFFS

TOTAL BRICK SF: 57,269 (59%)  
TOTAL FC SF: 40,317 (41%)

NOTE:  
1. PARKING DECK NOT INCLUDED.  
2. SEE ELEVATIONS FOR BREAKDOWN OF EACH ELEVATION.

SW 7066 GRAY MATTERS	IRON MOUNTAIN
SW 7674 PEPPERCORN	ALPINE SELECT
SW 7583 WILD CURRANT	PRE-CAST PANELS
NOTE: AT PARKING GARAGE ONLY.	

NILES BOLTON ASSOCIATES

3060 Peachtree Rd. N.W.  
Suite 600  
Atlanta, GA 30305

T 404 365 7600

www.nilesbolton.com

This drawing, as an instrument of service, is and shall remain the property of the Architects and shall not be reproduced, published or used in any way without the permission of the Architect.

CORTLAND AT ABILENE STATION SITE PLAN WITH ADJUSTMENTS  
BLACKHAWK ST AND 2ND PLACE  
AURORA, COLORADO

OWNER:  
CORTLAND

3424 PEACHTREE RD NE  
SUITE 300  
ATLANTA, GA 30326

NOT FOR CONSTRUCTION

DATE:  
03.30.22 SUBMITTAL  
06.30.22 SUBMITTAL  
09.19.22 SUBMITTAL

SHEET TITLE:  
ELEVATIONS - BUILDING 500



A3.22