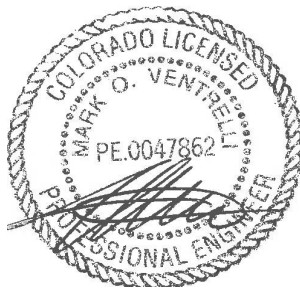


COPYRIGHTED DOCUMENT: THIS DRAWING AND THE BROAD FILE FROM WHICH IT HAS BEEN GENERATED ARE PROVIDED AS AN INSTRUMENT OF SERVICE FOR THE PROJECT. THESE DOCUMENTS ARE THE SOLE PROPERTY OF GOREE ARCHITECTS, INC. ANY USE OF THESE DOCUMENTS FOR PURPOSES OTHER THAN THOSE ASSOCIATED WITH THIS PROJECT WITHOUT THE EXPRESSED, WRITTEN PERMISSION OF GOREE ARCHITECTS, INC. IS PROHIBITED.

CONSULTANTS



Mechanical, Electrical, Plumbing  
Engineering and Consulting  
WWW.TRUSTEDENGINEERING.COM



PROJECT NAME

**LAZYDAYS AURORA,  
CO**

PROJECT DESCRIPTION

**GROUND UP CONSTRUCTION  
OF AN RV SALES AND SERVICE  
CENTER**

PROJECT ADDRESS

OWNER INFORMATION

**LAZYDAYS RV  
4042 PARK OAKS BLVD, #350  
TAMPA, FL 33610**

**NOT FOR CONSTRUCTION**

GOREE PROJECT NUMBER  
**C23017**

STAMP / SIGNATURE

**FOR INTERIM REVIEW.  
NOT INTENDED FOR  
BIDDING, PERMITTING OR  
CONSTRUCTION PURPOSES.**

ISSUE HISTORY

DATE	MARK	DESCRIPTION
06/28/2023		55% CD FOR REVIEW
09/11/2023		75% CD FOR REVIEW
10/13/2023		95% CD FOR REVIEW
11/02/2023		UTILITY COORDINATION

KEY PLAN

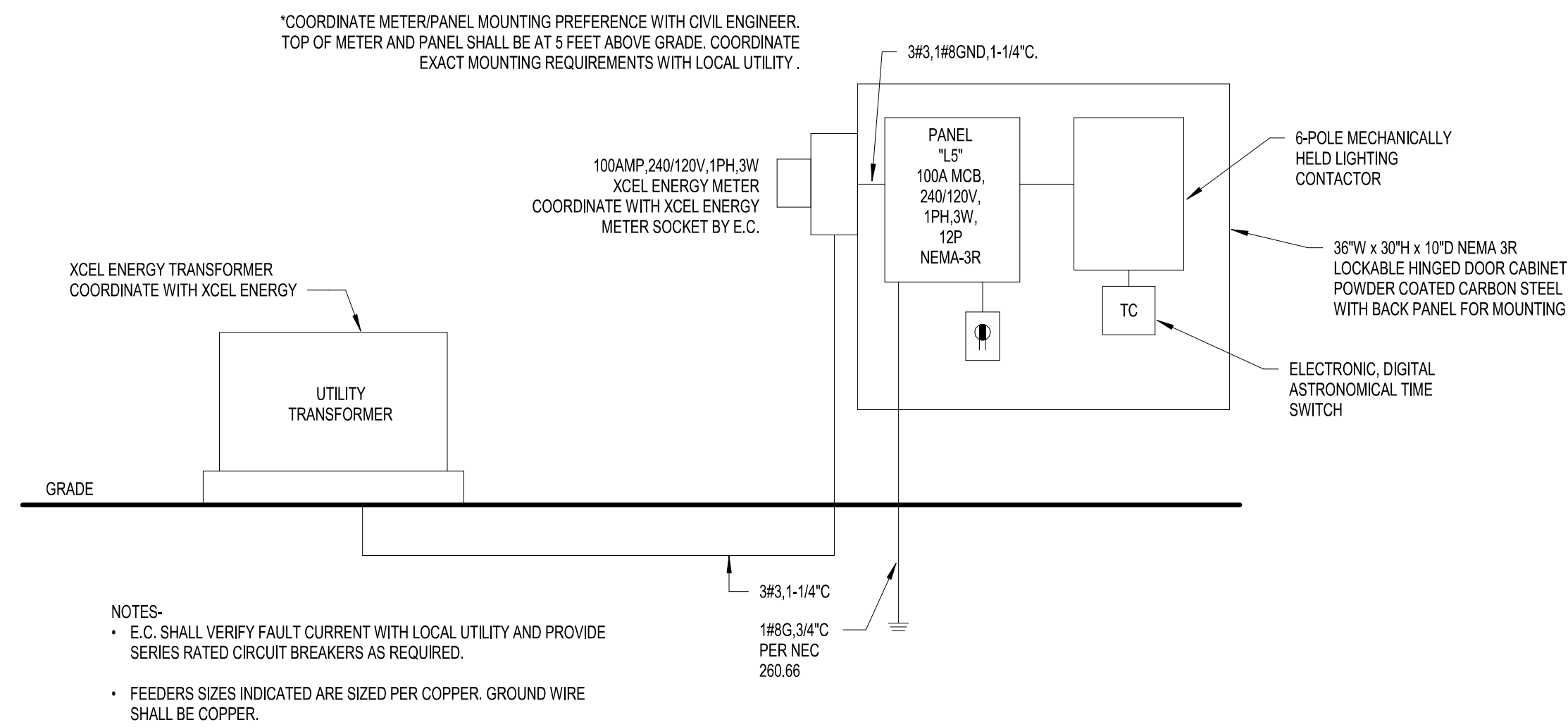
SHEET NAME

**ELECTRICAL ONE-LINE  
DIAGRAM**

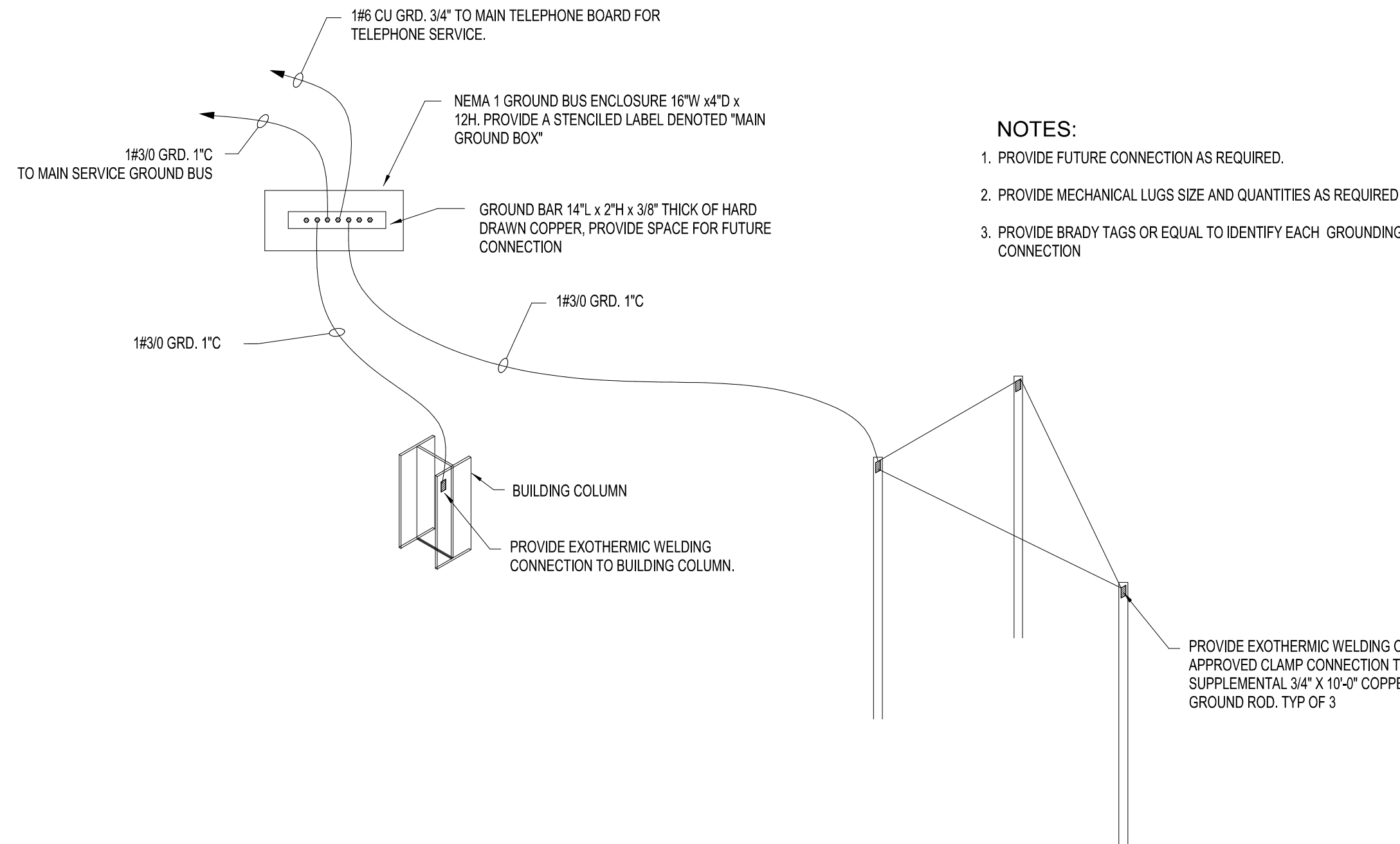
SHEET NUMBER

**E301**

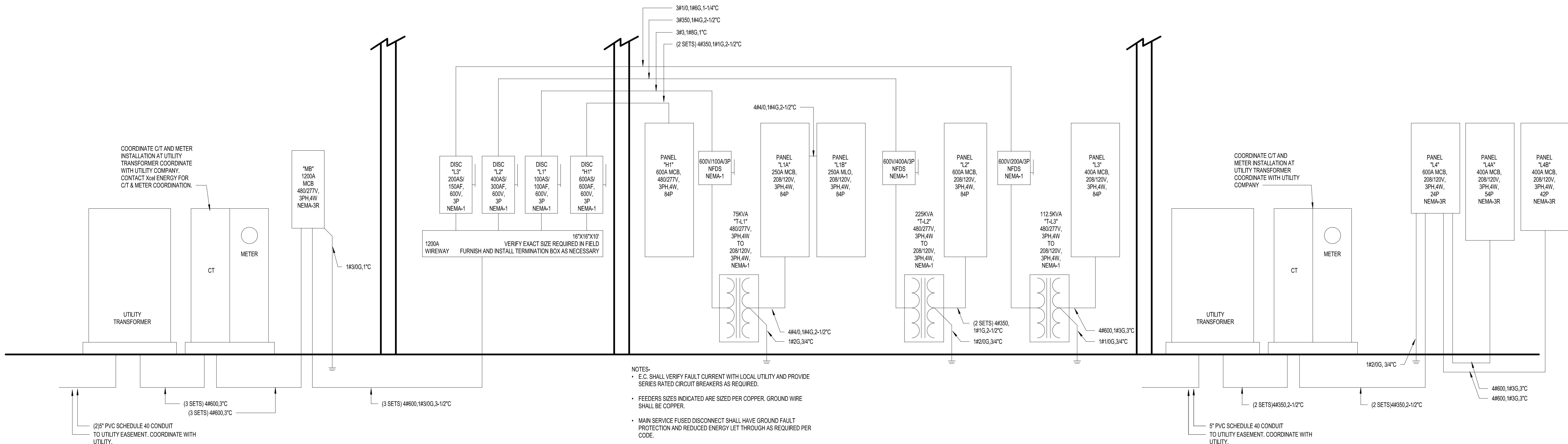
© GOREE ARCHITECTS 2021



**3 ELECTRICAL ONE-LINE DIAGRAM - PATH LIGHTING**  
N.T.S.



**2 GROUNDING DETAIL**  
N.T.S.



**1 ELECTRICAL ONE-LINE DIAGRAM**  
N.T.S.







Branch Panel: L5												
Location: Supply From: Mounting: Surface Enclosure: 1				Volts: 120/240 Single Phases: 1 Wires: 3				A.I.C. Rating: 10kA Mains Type: MCB Mains Rating: 100 A MCB Rating: 100 A				
CKT	Circuit Description		Trip	Poles	A		B		Poles	Trip	Circuit Description	CKT
1	Lighting		20	2	116	--			1	--	Space	2
3	--		--	--			116	--	1	--	Space	4
5	Lighting		20	2	198	--			1	--	Space	6
7	--		--	--			198	--	1	--	Space	8
9	Space		--	1	--	--			1	--	Space	10
11	Space		--	1			--	--	1	--	Space	12
Total Load:					314 VA		314 VA					
Total Amps:					3 A		3 A					
Load Classification		Connected Load		Demand Factor		Estimated Demand		Panel Totals				
Lighting		627 VA		100.00%		627 VA						
								Total Conn. Load: 627 VA				
								Total Est. Demand: 627 VA				
								Total Conn.: 3 A				
								Total Est. Demand: 3 A				
Notes:												

Branch Panel: L4											
Location: Supply From: Mounting: Surface Enclosure: 1				Volts: 120/208 Wye Phases: 3 Wires: 4				A.I.C. Rating: 10kA Mains Type: MCB Mains Rating: 600 A MCB Rating: 600 A			
CKT	Circuit Description	Trip	Poles	A	B	C	Poles	Trip	Circuit Description	CKT	
1	L4A	400	3	88400	--			1 --	Space	2	
3	--	--	--		88400	--		1 --	Space	4	
5	--	--	--			83200	--	1 --	Space	6	
7	L4B	400	3	41600	--			1 --	Space	8	
9	--	--	--		41600	--		1 --	Space	10	
11	--	--	--			41600	--	1 --	Space	12	
13	Space	--	1	--	--			1 --	Space	14	
15	Space	--	1	--	--	--	--	1 --	Space	16	
17	Space	--	1	--	--	--	--	1 --	Space	18	
19	Space	--	1	--	--			1 --	Space	20	
21	Space	--	1	--	--	--	--	1 --	Space	22	
23	Space	--	1	--	--			1 --	Space	24	
		Total Load:		130,000 VA	130,000 VA	124,800 VA					
		Total Amps:		1090 A	1090 A	1040 A					
Load Classification		Connected Load		Demand Factor		Estimated Demand		Panel Totals			
Charging Station		384800 VA		41.00%		157768 VA					
								Total Conn. Load: 384,800 VA			
								Total Est. Demand: 157,768 VA			
								Total Conn.: 1068 A			
								Total Est. Demand: 438 A			
Notes:											

Branch Panel: L4A											
Location: Supply From: L4 Mounting: Surface Enclosure: 1				Volts: 120/208 Wye Phases: 3 Wires: 4				A.I.C. Rating: 10kA Mains Type: MCB Mains Rating: 400 A MCB Rating: 400 A			
CKT	Circuit Description	Trip	Poles	A	B	C	Poles	Trip	Circuit Description	CKT	
1	RV-5	50	2	5200	5200			2	50	RV-17	2
3	--	--	--		5200	5200		--	--	--	4
5	RV-6	50	2			5200	5200	2	50	RV-18	6
7	--	--	--	5200	5200			--	--	--	8
9	RV-7	50	2		5200	5200		2	50	RV-19	10
11	--	--	--			5200	5200	--	--	--	12
13	RV-8	50	2	5200	5200			2	50	RV-20	14
15	--	--	--		5200	5200		--	--	--	16
17	RV-9	50	2			5200	5200	2	50	RV-21	18
19	--	--	--	5200	5200			--	--	--	20
21	RV-10	50	2		5200	5200		2	50	RV-22	22
23	--	--	--			5200	5200	--	--	--	24
25	RV-11	50	2	5200	5200			2	50	RV-23	26
27	--	--	--		5200	5200		--	--	--	28
29	RV-12	50	2			5200	5200	2	50	RV-24	30
31	--	--	--	5200	5200			--	--	--	32
33	RV-13	50	2		5200	5200		2	50	RV-25	34
35	--	--	--			5200	5200	--	--	--	36
37	RV-14	50	2	5200	5200			2	50	RV-26	38
39	--	--	--		5200	5200		--	--	--	40
41	RV-15	50	2			5200	5200	2	50	RV-27	42
43	--	--	--	5200	5200			--	--	--	44
45	RV-16	50	2		5200	5200		2	50	RV-28	46
47	--	--	--			5200	5200	--	--	--	48
49	Space	--	1	--	5200			2	50	RV-29	50
51	Space	--	1		--	5200		--	--	--	52
53	Space	--	1			--	--	1	--	Space	54
		Total Load:		88,400 VA	88,400 VA	83,200 VA					
		Total Amps:		743 A	743 A	693 A					
Load Classification		Connected Load		Demand Factor		Estimated Demand		Panel Totals			
Charging Station		260000 VA		42.00%		109200 VA					
								Total Conn. Load: 260,000 VA			
								Total Est. Demand: 109,200 VA			
								Total Conn.: 722 A			
								Total Est. Demand: 303 A			
Notes:											

Branch Panel: L4B													
Location: Supply From: L4 Mounting: Surface Enclosure: 3R				Volts: 120/208 Wye Phases: 3 Wires: 4				A.I.C. Rating: 10kA Mains Type: MCB Mains Rating: 400 A MCB Rating: 400 A					
CKT	Circuit Description	Trip	Poles	A		B		C		Poles	Trip	Circuit Description	CKT
1	RV-36	50	2	5200	5200					2	50	RV-30	2
3	--	--	--			5200	5200			--	--	--	4
5	RV-37	50	2					5200	5200	2	50	RV-31	6
7	--	--	--	5200	5200					--	--	--	8
9	RV-38	50	2			5200	5200			2	50	RV-32	10
11	--	--	--					5200	5200	--	--	--	12
13	RV-39	50	2	5200	5200					2	50	RV-33	14
15	--	--	--			5200	5200			--	--	--	16
17	RV-40	50	2					5200	5200	2	50	RV-34	18
19	--	--	--	5200	5200					--	--	--	20
21	RV-41	50	2			5200	5200			2	50	RV-35	22
23	--	--	--					5200	5200	--	--	--	24
25	Space	--	1	--	--					1	--	Space	26
27	Space	--	1			--	--			1	--	Space	28
29	Space	--	1					--	--	1	--	Space	30
31	Space	--	1	--	--					1	--	Space	32
33	Space	--	1			--	--			1	--	Space	34
35	Space	--	1					--	--	1	--	Space	36
37	Space	--	1	--	--					1	--	Space	38
39	Space	--	1			--	--			1	--	Space	40
41	Space	--	1					--	--	1	--	Space	42
		Total Load:		41,600 VA		41,600 VA		41,600 VA					
		Total Amps:		347 A		347 A		347 A					
Load Classification		Connected Load		Demand Factor		Estimated Demand		Panel Totals					
Charging Station		124800 VA		50.00%		62400 VA							
								Total Conn. Load: 124,800 VA					
								Total Est. Demand: 62,400 VA					
								Total Conn.: 346 A					
								Total Est. Demand: 173 A					
Notes:													

CONSULTANTS



Mechanical, Electrical, Plumbing  
Engineering and Consulting  
WWW.TRUSTEDENGINEERING.COM



PROJECT NAME

LAZYDAYS AURORA,  
CO

PROJECT DESCRIPTION

GROUND UP CONSTRUCTION  
OF AN RV SALES AND SERVICE  
CENTER

PROJECT ADDRESS

OWNER INFORMATION



COPYRIGHTED DOCUMENT: THIS DRAWING AND THE BROAD FILE FROM WHICH IT HAS BEEN GENERATED ARE PROVIDED AS AN INSTRUMENT OF SERVICE FOR THE PROJECT. THESE DOCUMENTS ARE THE SOLE PROPERTY OF GOREE ARCHITECTS, INC. ANY USE OF THESE DOCUMENTS FOR ANY OTHER THAN THE PROJECT ASSOCIATED WITH THIS PROJECT WITHOUT THE EXPRESSED, WRITTEN PERMISSION OF GOREE ARCHITECTS, INC. IS PROHIBITED.

1

2

3

4

5

6

7

8

9

10

11

12

13

14

15

16

17

18

19

20

21

22

23

24

25

26

27

28

29

30

31

32

33

34

35

36

37

38

39

40

41

42

43

44

45

46

47

48

49

50

51

52

53

54

55

56

57

58

59

60

61

62

63

64

65

66

67

68

69

70

71

72

73

74

75

76

77

78

79

80

81

82

83

84

85

86

87

88

89

90

91

92

93

94

95

96

97

98

99

100

101

102

103

104

105

106

107

108

109

110

111

112

113

114

115

116

117

118

119

120

121

122

123

124

125

126

127

128

129

130

131

132

133

134

135

136

137

138

139

140

141

142

143

144

145

146

147

148

149

150

151

152

153

154

155

156

157

158

159

160

161

162

163

164

165

166

167

168

169

170

171

172

173

174

175

176

177

178

179

180

181

182

183

184

185

186

187

188

189

190

191

192

193

194

195

196

197

198

199

200

201

202

203

204

205

206

207

208

209

210

211

212

213

214

215

216

217

218

219

220

221

222

223

224

225

226

227

228

229

230

231

232

233

234

235

236

237

238

239

240

241

242

243

244

245

246

247

248

249

250

251

252

253

254

255

256

257

258

259

260

261

262

263

264

265

266

267

268

269

270

271

272

273

274

275

276

277

278

279

280

281

282

283

284

285

286

287

288

289

290

291

292

293

294

295

296

297

298

299

300

301

302

303

304

305

306

307

308

309

310

311

312

313

314

315

316

317

318

319

320

321

322

323

324

325

326

327

328

329

330

331

332

333

334

335

336

337

338

339

340

341

342

343

344

345

346

347

348

349

350

351

352

353

354

355

356

357

358

359

360

361

362

363

364

365

366

367

368

369

370