

K: \DEN_Civil\196617000_Fine Parking\CADD\PlanSheets\FDP\196617000_Landscape Design Standards.dwg Langer, Maria 6/16/2023 2:08 PM

Fine Point Business Park Master Plan Amendment
E. 56th Avenue & Powathon Road
Form G: Landscape Standards Matrix

Landscape Item	Commercial Area Brief description of the Feature	Industrial areas Brief description of the Feature	Location of the Standards in Application Package
1. Overall landscape concept and palette of plant materials used to carry it out.	The landscape character will be a defining characteristic for the Business park; and the landscape design will generally respect the contextual prairie landscape through the use of an indigenous and adapted native plant palette, selective use of turf lawn, and bold landscape design.	Same as commercial area requirements when visible from public ROW. No requirements when screened from public view	Imagery is located in the Landscape Design Standards - TAB 11.2-11.5
2. Landscape design at entry monumentation and key entry points	The landscape design surrounding the entry features will compliment the monumentation without competing with it. Through the use of native plantings, the monuments can either be integrated into more passive spaces for vehicular viewing or into more active plaza type spaces for pedestrian interaction, where the landscape design will be used to define the use areas.	Same as commercial area.	Imagery is located in the Urban Design standards - TAB 10.2-10.4
3. Landscape standards along E-470 or I-70 (If applicable)	N/A	N/A	
4. Landscape standards along arterial and collector roads	The landscape along arterial and collector roads will provide year round interest, while being engaging for both the vehicular and pedestrian experience. Plant materials will be used for architectural effect through the design of curvilinear planter beds that also integrate horizontal and vertical layering of plants. This will serve to create interesting and dynamic visual corridors for drivers that allow for a different experience for pedestrians. Plant quantities will follow the City of Aurora landscape requirements, but may be clustered as opposed to on-center spacing to allow for flexibility and interest within the design. Also, this allows flexibility for plant material to be arranged to highlight architectural features of the mixed use commercial buildings.	Same as commercial area.	Imagery is located in the Landscape Design Standards - TAB 11.5-11.7
5. Landscape standards along local roadways	The landscape along the local roadways will primarily consist of street trees. Street trees have significant impact on the overall experience of a neighborhood, and will consist of deciduous canopy trees that provide for winter exposure and summer shade. The landscape along local roads will reflect the overall theme, but will have more formal tree spacing and should strive to blend with the landscape on adjacent parcels.	Same as commercial area.	Imagery is located in the Landscape Design standards - TAB 11.5-11.8
6. Landscape standards in commercial and public gathering areas. (Tree grates & protectors, planters, flower beds, screening at parking lots, etc..)	The landscape design in commercial and public gathering areas will utilize the native plant palette, albeit in a more formal setting. A variety of raised planters, at grade planters and pots can be used in these more urban spaces to aid in circulation and define space, while providing a comfortable setting for resting and social interaction. Planter beds with enhanced planting of signature species will be utilized to enhance key areas of the plan to bring attention to entrances, architectural features and gathering spaces.	Same as commercial area. Only required at entrances plazas to industrial buildings. See 4.6 Form F-1: Urban Design Standards Matrix item 8.b	Imagery is located in the Landscape Design Standards - TAB 11.5 and in the Urban Design Standards - TAB 10.2, 10.3, 10.5, 10.9, 10.10, 10.12 and 10.13

The design standards listed in this matrix implement the design themes of the Master Plan and are intended to complement and exceed Airport District (AD) zoning designation and landscape standards found in 146–4.7 Landscape, Water conservation, Stormwater Management. Unless a waiver has been specifically requested and granted, if a conflict should exist between any specific provisions of this matrix and Article 14 Landscaping, the higher standards shall govern.

All the photos and illustrations referenced by this matrix are representative of the level of design quality required by this Master Plan. Final designs to be submitted at the Site Plan level will not necessarily duplicate the exact illustrations, but will contain the same themes and dimensions as shown, and will be at the same or higher level of design quality, extent, and detail.

K: \DEN_Civil\196617000_Fine Parking\CADD\PlanSheets\FDP\196617000_Landscape Design Standards.dwg Langer, Maria 6/16/2023 2:08 PM

Fine Point Business Park Master Plan Amendment
E. 56th Avenue & Powathon Road
Form G: Landscape Standards Matrix

Landscape Item	Commercial Area Brief Description of the Feature	Industrial Areas Brief Description of the Feature	Location of Standards in Application Package
8. Landscape buffers at parks, open space, and drainage	The main open space in the development will be along Gopher Gulch drainage and will connect to the larger open space system in Porteos. Landscape buffers will be utilized to blend the adjacent mixed use commercial areas with the open space and will meet with the City of Aurora landscape buffer requirements.	Same as commercial area.	Imagery is located in the Landscape Design Standards - TAB 11.10
9. Special standards at residential lots. (If residential backyards border open space or parks, indicate special standards.)	N/A	N/A	
10. Landscape integration at retaining walls	While we do not anticipate a significant amount of retaining walls within the Fine Point Business Park we acknowledge that it is likely that we will have some. The intent of the landscape design integrating with the retaining walls will be to anchor the walls to the environment while softening them. The planting styles will be consistent with the landscape design of the greater area surrounding the specific retaining walls. Plant material should be appropriate to the space created by the retaining walls. No trees should be planted within 5' of the wall foundation or in any area that would compromise retaining wall geogrid integrity. If trees are required in these areas that shall be allowed to be transferred to the surrounding landscape so as to not negatively affect the viability of the retaining wall.	Same as commercial area requirements when visible from public ROW. No requirements when screened from public view.	Imagery is located in the Urban Design Standards - TAB 10.5
11. Landscape standards at special facilities	N/A	N/A	
12. Buffer and setback exemptions for traditional street frontages	N/A	N/A	
13. Landscape standards for parking as a primary use	Parking lot buffers shall integrate low berming where appropriate and feasible. Screening shall utilize a mix of deciduous and evergreen trees and shrubs for adequate screening while providing seasonal interest throughout the year. When parking facilities are included as a primary use, such as an airport parking facility, they shall not be subject to interior parking lot landscape requirements nor shall interior islands be required. A waiver will be processed in this regard at the time of the Site Plan.	Same as commercial area requirements when visible from public ROW. No requirements when screened from public view.	Imagery is located in the Landscape Design Standards - TAB 11.9

The design standards listed in this matrix implement the design themes of the Master Plan and are intended to complement and exceed Airport District (AD) zoning designation and landscape standards found in 146–4.7 Landscape, Water conservation, Stormwater Management. Unless a waiver has been specifically requested and granted, if a conflict should exist between any specific provisions of this matrix and Article 14 Landscaping, the higher standards shall govern.

All the photos and illustrations referenced by this matrix are representative of the level of design quality required by this Master Plan. Final designs to be submitted at the Site Plan level will not necessarily duplicate the exact illustrations, but will contain the same themes and dimensions as shown, and will be at the same or higher level of design quality, extent, and detail.

Kimley»Horn

PROJECT NO.
196617000

DATE: 11/24/2023
DESIGNED BY: BJC
DRAWN BY: CTM
CHECKED BY: BJC

TAB
11

FINE POINT BUSINESS PARK
MASTER PLAN AMENDMENT
LANDSCAPE STANDARDS

TAB ELEVEN

DECIDUOUS TREES

Botanical	Common
Acer freemanii 'Autumn Blaze'	Autumn Blaze Maple
Acer grandidentatum	Bigtooth Maple
Acer platanoides	Norway Maple
Acer platanoides 'Columnare'	Columnar Norway Maple
Aesculus glabra	Ohio Buckeye
Catalpa speciosa	Northern Catalpa
Celtis occidentalis	Common Hackberry
Gleditsia triacanthos inermis 'Shademaster' TM	Shademaster Locust
Gleditsia triacanthos 'Imperial'	Imperial Honeylocust
Gleditsia triacanthos 'Skyline'	Skyline Honey Locust
Gymnocladus dioica	Kentucky Coffee Tree
Populus angustifolia	Narrowleaf Cottonwood
Populus deltoides	Eastern Cottonwood
Populus x acuminata	Lanceleaf Poplar
Quercus bicolor	Swamp White Oak
Quercus macrocarpa	Burr Oak
Quercus robur 'Fastigiata'	Columnar English Oak
Quercus rubra	Red Oak
Tilia americana 'Redmond'	Redmond American Linden
Tilia cordata	Littleleaf Linden
Ulmus x 'Triumph'	Triumph Elm

EVERGREEN TREES

Botanical	Common
Abies concolor	White Fir
Juniperus chinensis 'Blue Point'	Blue Point Juniper
Juniperus scopulorum 'Gray Gleam'	Gray Gleam Juniper
Juniperus scopulorum 'Skyrocket'	Skyrocket Juniper
Juniperus scopulorum 'Wichita Blue'	Wichita Blue Juniper
Malus x 'Spring Snow'	Spring Snow Crab Apple
Picea pungens	Colorado Spruce
Pinus edulis	Pinon Pine
Pinus Flexilis 'Vanerwolf's Pyramid'	Vanerwolf's Pyramid Pine
Pinus nigra	Austrian Black Pine
Pinus ponderosa	Ponderosa Pine
Pinus strobiformis	Southwestern White Pine

ORNAMENTAL TREES

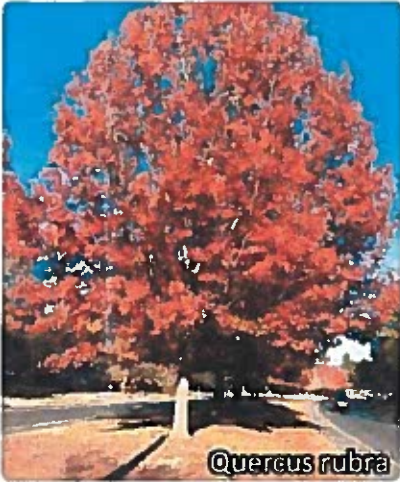
Botanical	Common
Acer ginnala compactum	Compact Amur Maple
Acer tataricum	Tatarian Maple
Amelanchier x grandiflora 'Autumn Brilliance'	'Autumn Brilliance' Serviceberry
Crataegus phaenopyrum	Washington Hawthorn
Malus x 'Brandywine'	Brandywine Crab Apple
Malus x 'Radiant'	Radiant Crab Apple
Malus x 'Spring Snow'	Spring Snow Crab Apple
Prunus maackii	Amur Chokecherry
Prunus virginiana 'Canada Red'	Canada Red Chokecherry
Pyrus calleryana	Ornamental Pear



Populus angustifolia



Quercus macrocarpa



Quercus rubra



Tilia cordata



Acer tartaricum



Amelanchier x grandiflora



Crataegus phaenopyrum



Prunus virginiana



Abies concolor



Juniperus scopulorum



Pinus edulis



Pinus nigra

EVERGREEN SHRUBS

Botanical	Common
Arctostaphylos x 'Panchito'	Panchito Manzanita
Cotoneaster apiculatus	Coral Beauty Cotoneaster
Cytisus purgans 'Spanish Gold'	Spanish Gold Broom
Cytisus scoparius 'Lilac Time'	Scotch Broom 'Lilac Time'
Ephedra equisetina	Bluestem Joint Fir
Genista lydia	Lydia Woadwaxen
Juniperus horizontalis 'Blue Chip'	Blue Chip Juniper
Juniperus horizontalis 'Hughes'	Hughes Juniper
Juniperus horizontalis 'Wiltonii'	Blue Rug Juniper
Juniperus sabina 'Buffalo'	Buffalo Juniper
Mahonia repens	Creeping Mahonia
Picea pungens glauca 'R.H. Montgomery'	Blue Spruce
Picea pungens 'Globe'	Dwarf Globe Green Spruce
Yucca baccata	Banana Yucca

LARGE DECIDUOUS SHRUBS

Botanical	Common
Amelanchier alnifolia	Serviceberry
Buddleja alternifolia	Alternate Leaf Butterfly Bush
Cercocarpus ledifolius	Curl-Leaf Mountain Mahogany
Cornus sericea 'Beileyi'	Red Twig Dogwood
Cotinus coggygria	Smoke Tree
Cotoneaster lucidus	Peking Cotoneaster
Forestiera neomexicana	New Mexican Privet
Ligustrum vulgare 'Cheyenne'	Cheyenne Privet
Lonicera x heckrottii	Goldflame Honeysuckle
Prunus americana	American Plum
Prunus besseyi 'Pawnee Buttes'	Sand Cherry
Prunus tomentosa	Nanking Cherry
Prunus virginiana	Chokecherry
Prunus x cistena	Purple Leaf Sand Cherry
Rhamnus smithii	Smith's Buckthorn
Rhus glabra	Smooth Sumac
Rhus typhina	Staghorn Sumac
Shepherdia argentea	Silver Buffaloberry
Syringa vulgaris	Common Lilac
Viburnum x rhytidophylloides 'Alleghany'	Alleghany Viburnum

MEDIUM DECIDUOUS SHRUBS

Botanical	Common
Amelanchier alnifolia 'Regent'	Saskatoon Serviceberry
Aronia melanocarpa 'Iroquois Beauty' TM	Black Chokeberry
Artemisia cana	Silver Sagebrush
Cowania mexicana	Mexican Cliffrose
Euonymus alatus 'Compactus'	Compact Burning Bush
Rhus trilobata 'Autumn Amber'	Autumn Amber Sumac
Ribes aureum	Golden Currant
Rosa foetida bicolor	Austrian Copper Rose
Rosa x harissonii	Harrison's Yellow Rose
Shepherdia canadensis	Russett Buffaloberry
Spiraea x vanhouttei	Vanhoutte Spirea
Syringa patula 'Miss Kim'	Miss Kim Lilac
Viburnum lantana 'Mohican'	Mohican Wayfaring Tree



TAB ELEVEN

SMALL DECIDUOUS SHRUBS

Botanical	Common
Amorpha canescens	Leadplant
Artemisia filifolia	Sand Sagebrush
Berberis thunbergii 'Atropurpurea Nana'	Dwarf Redleaf Japanses Barberry
Caragana pygmaea	Pygmy Peashrub
Caryopteris x clandonensis 'Dark Knight'	Blue Mist Shrub
Chrysothamnus nauseosus nauceosus	Dwarf Blue Rabbitbrush
Daphne x burkwoodii 'Carol Mackie'	Carol Mackie Daphne
Potentilla fruticosa 'Gold Drop'	Gold Drop Potentilla
Rhus aromatica 'Gro-Low'	Gro-Low Fragrant Sumac
Ribes rubrum 'Red Lake'	Red Currant
Rosa woodsii ultramontana	Woods' Rose
Spiraea japonica 'Goldflame'	Spirea
Symphoricarpos x chenaultii 'Hancock'	Hancock Coralberry
Yucca glauca	Soapweed

ANNUALS / PERENNIALS

Botanical	Common
Achillea x 'Moonshine'	Moonshine Yarrow
Agastache x 'Blue Fortune'	Anise Hyssop
Centranthus ruber	Red Valerian
Diascia integerrima 'Coral Canyon'	Coral Canyon Twinspur
Echinacea purpurea	Purple Coneflower
Gaillardia aristata	Blanket Flower
Leucanthemum x 'Snow Lady'	Dwarf Shasta Daisy
Nepeta x faassenii 'Walkers Low'	Walkers Low Catmint
Penstemon pinifolius	Threadleaf Beardtongue
Rudbeckia fulgida 'Goldsturm'	Goldsturm Black-eyed Susan
Salvia x sylvestris 'May Night'	Sage
Sedum spectabile 'Autumn Joy'	Stonecrop

ORNAMENTAL GRASSES

Botanical	Common
Bouteloua gracilis 'Blonde Ambition'	Blue Grama
Calamagrostis x acutiflora 'Karl Foerster'	Feather Reed Grass
Festuca glauca 'Elijah Blue'	Blue Fescue
Helictotrichon sempervirens	Blue Oat Grass
Nassella tenuissima 'Pony Tails'	Mexican Feathergrass
Panicum virgatum	Switch Grass
Pennisetum alopecuroides 'Hameln'	Dwarf Fountain Grass
Schizachyrium scoparium	Little Bluestem Grass

GROUNDCOVERS

Botanical	Common
Arctostaphylos uva-ursi	Kinnikinnick
Dianthus deltoides 'Zing Rose'	Zing Rose Maiden Pink
Veronica x 'Reavis'	Crystal River Speedwell



Caryopteris x clandonensis



Chrysothamnus var.



Rhus aromatica



Spiraea golden flame



Boutelous gracillis



Calamagrostis acutiflora



Nassella tenuissima pony tails



Schizachyrium scoparium



Nepeta faassenii



Achillea



Echinacea purpurea



Penstemon pinifolius



Rudbeckia fulgida



Sedum autumn joy

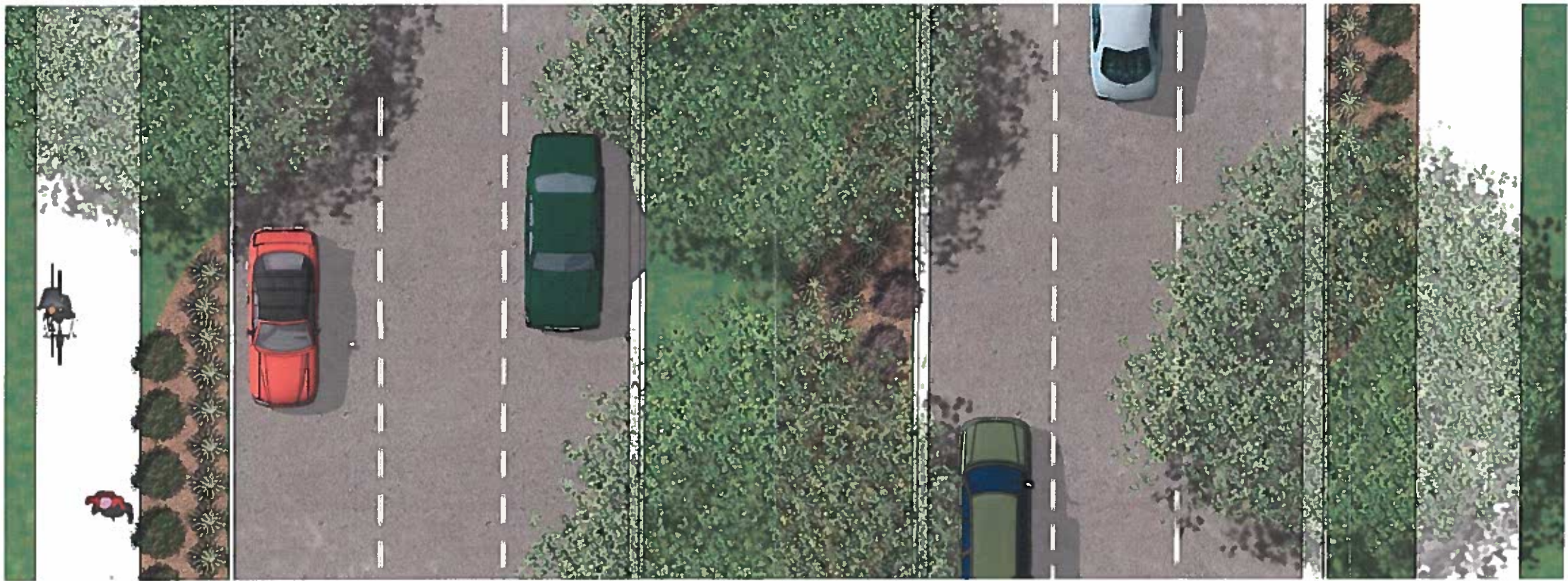
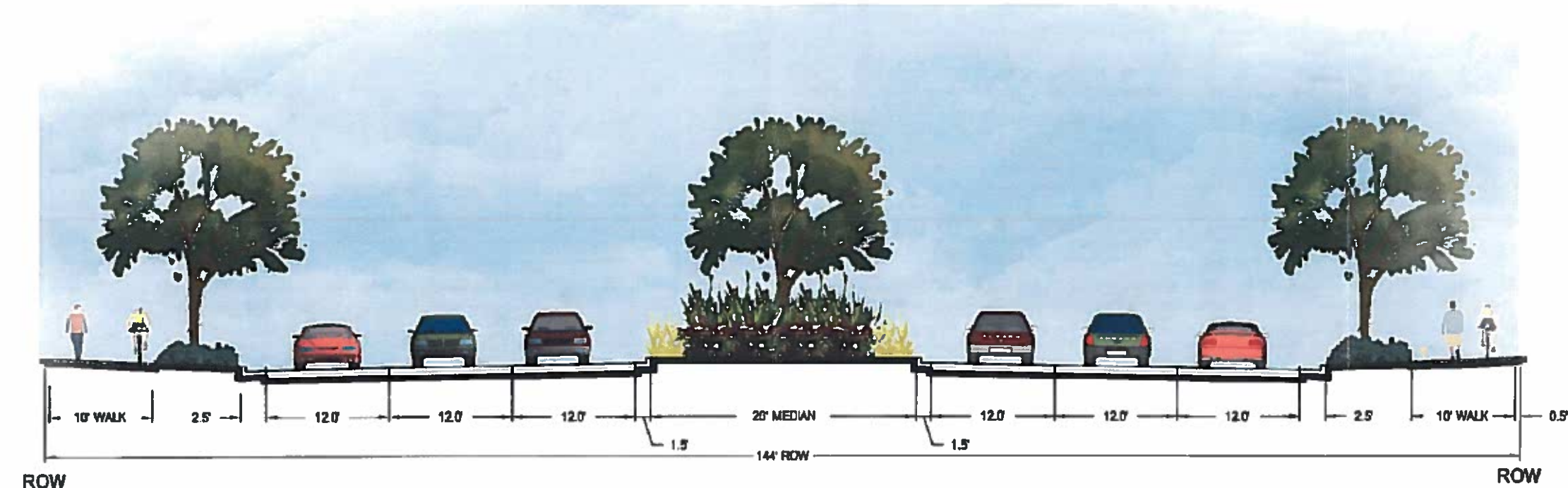


Monoculture grasses mimic the native front range ecosystems while prairie flowers and ornamental trees provide colorful accents to the identity of Fine Point Business Park. In the urban environment, deciduous and evergreen trees provide shade and wind buffering as well as visual interest.

The planting and streetscape concept is intended to use a largely native plant palette for striking architectural and season interest, and will be combined with both evergreen and deciduous plants for textural effect. Within given areas of the plan differing color palette combinations will be used to enhance both the pedestrian and vehicular experience. In vehicular oriented locations, large drifts of plants will be used to create patterns and interest in the landscape.



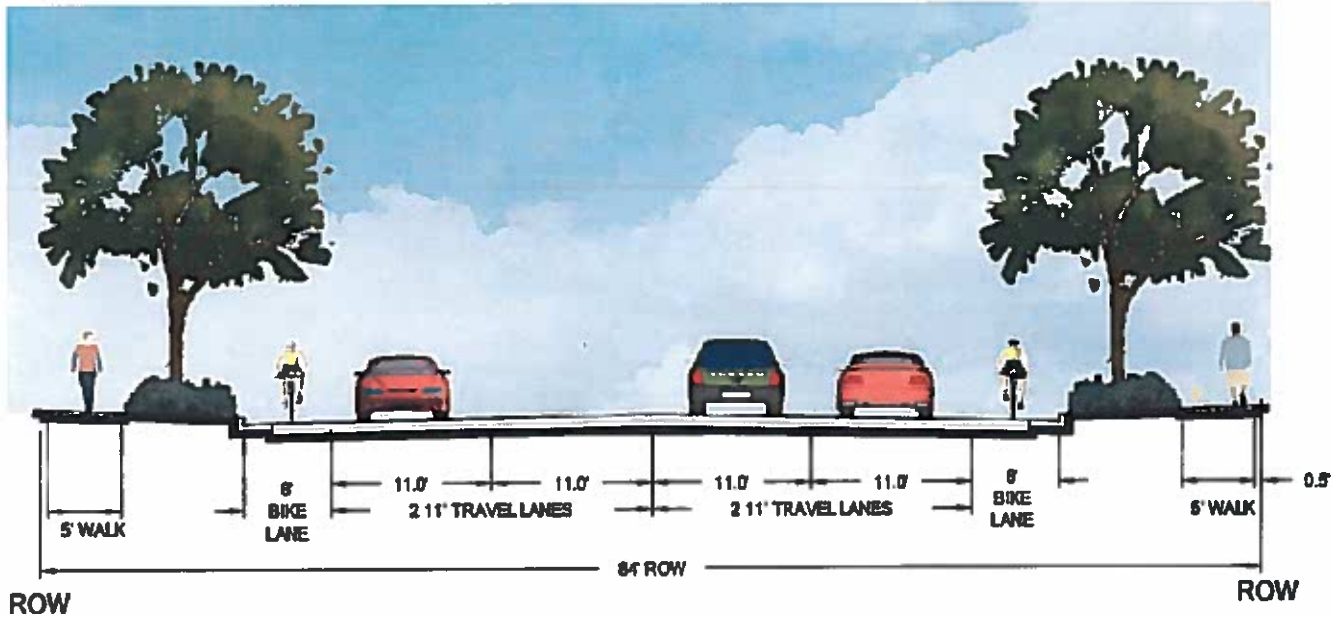
Six Lane Arterial



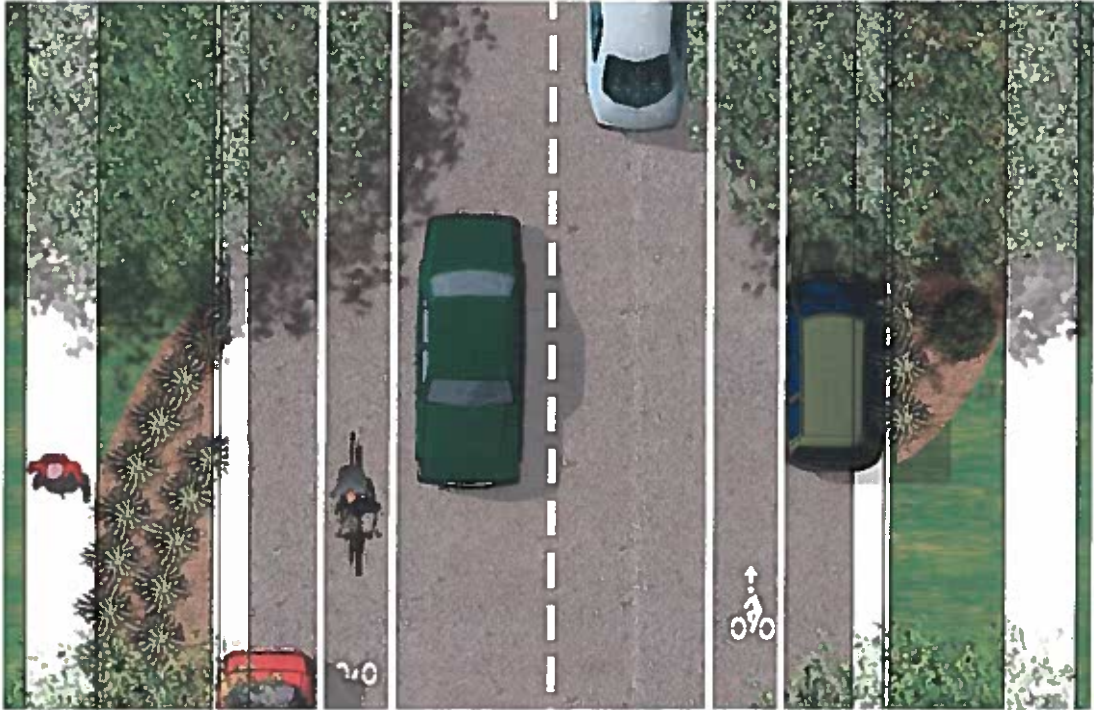
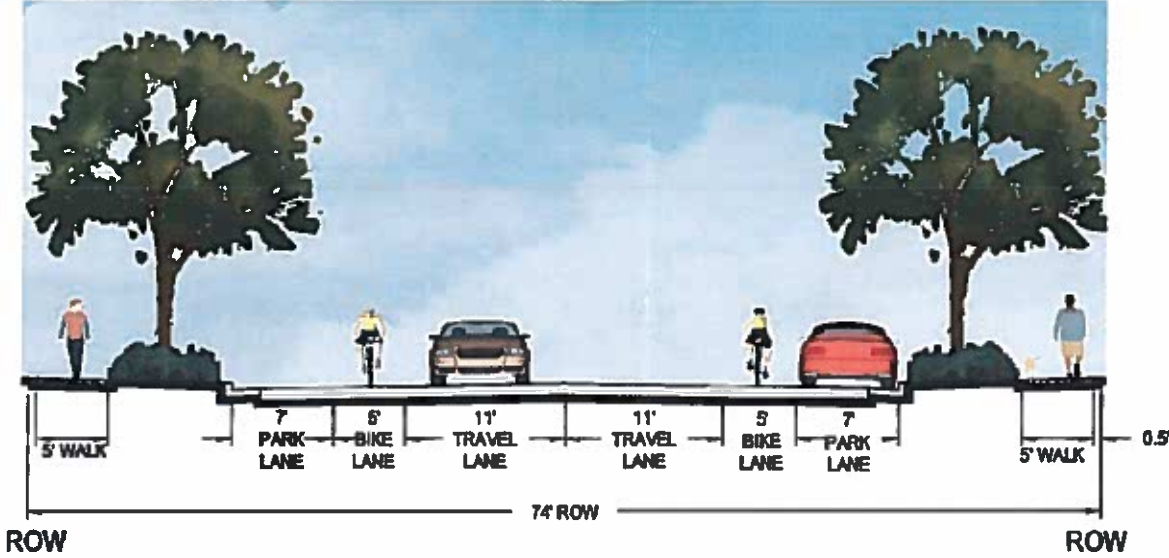
October 6, 2015

Page 11.7

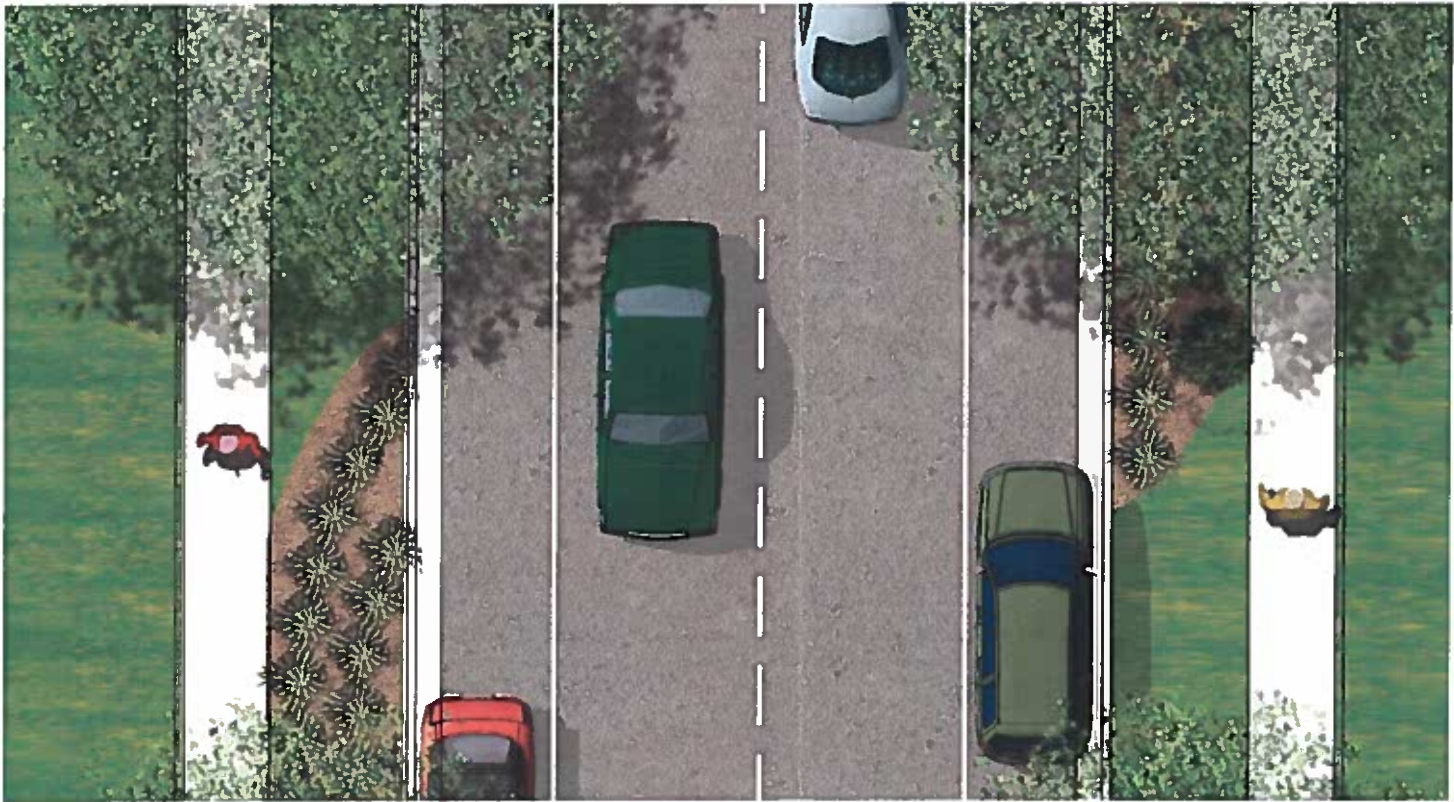
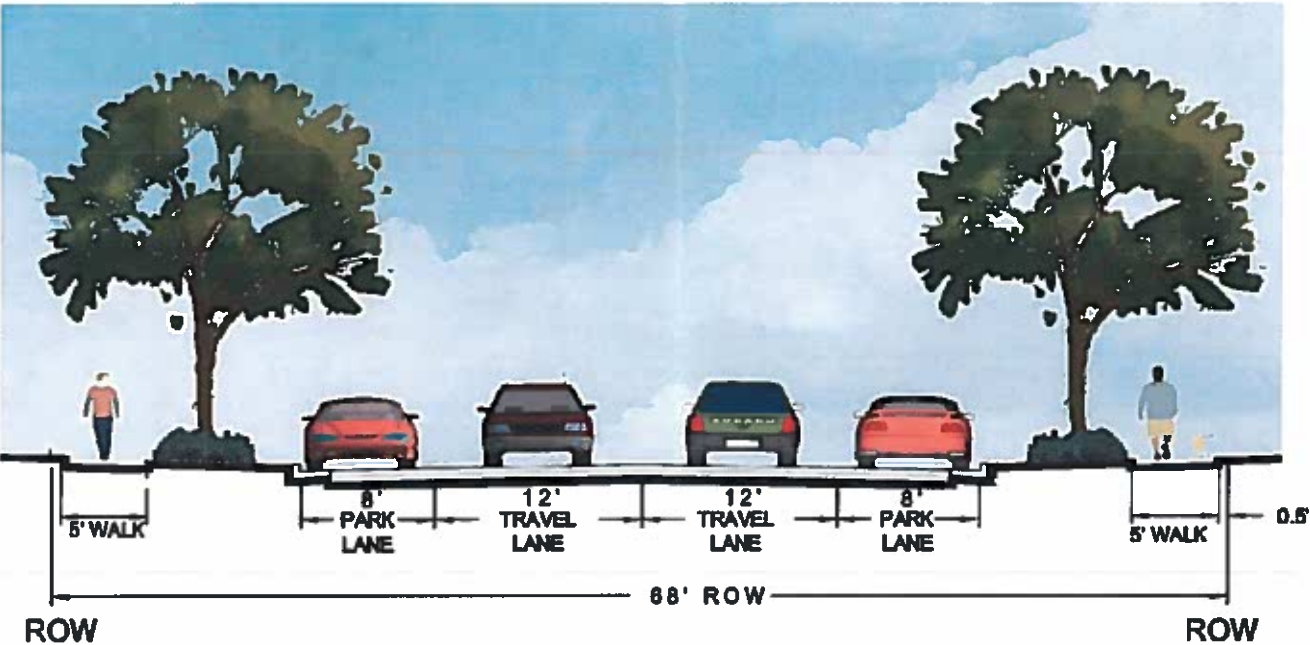
Four Lane Collector



Two Lane Collector



Two Lane Local

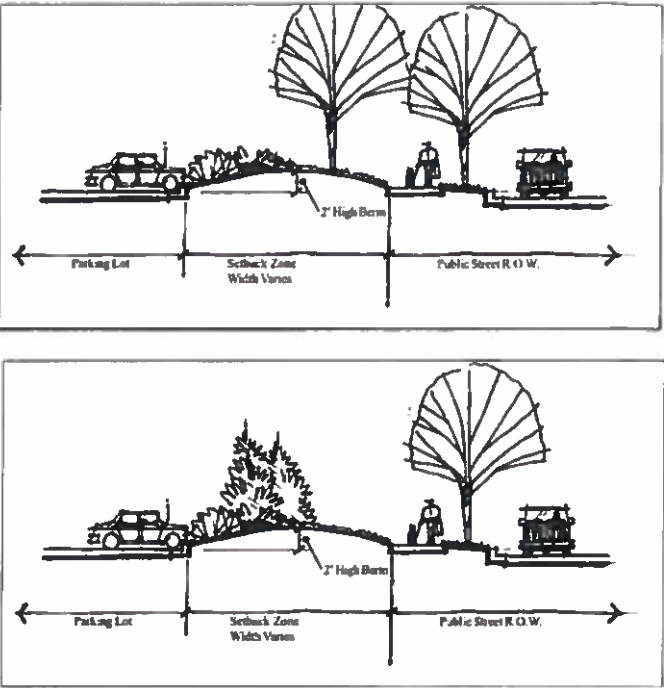


TAB ELEVEN

Parking as a Primary Use

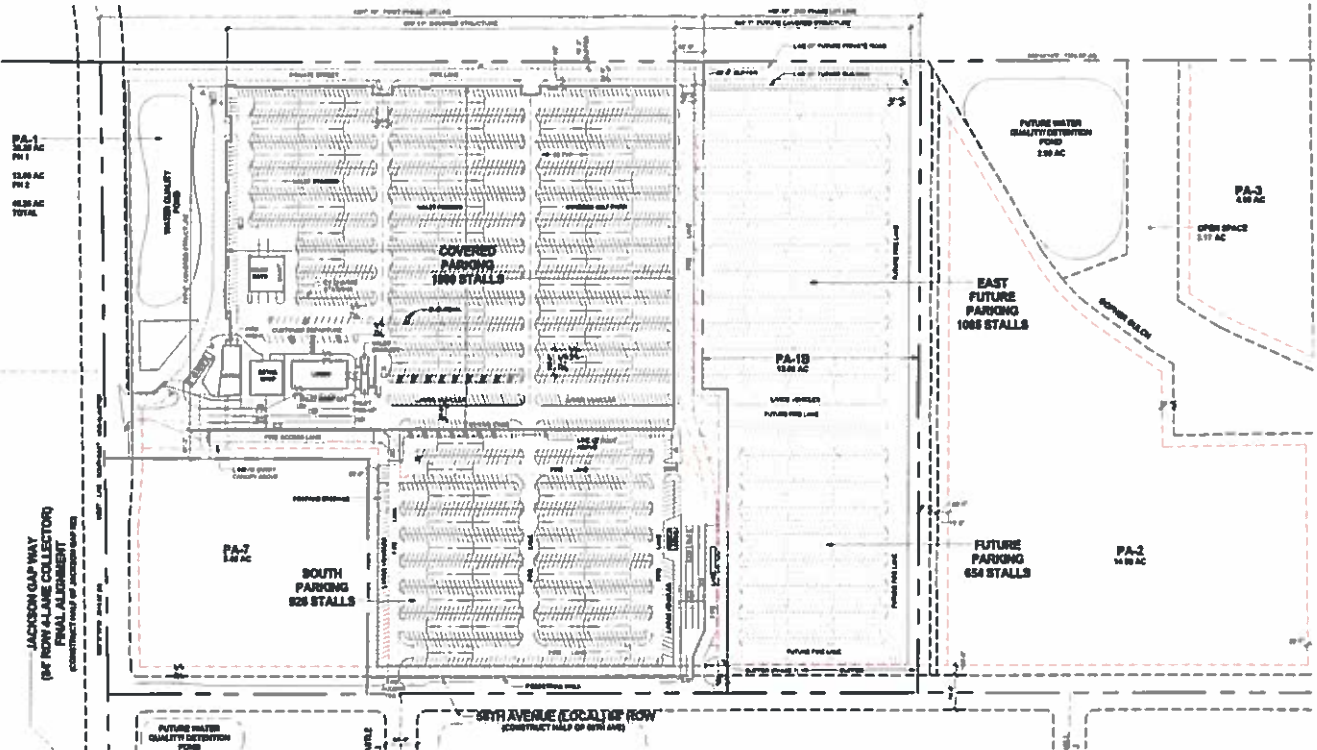


Parking lot screening shall utilize a mix of deciduous and evergreen shrubs and trees to provide an appropriate buffer while also providing seasonal interest. Parking buffers shall be consistent with the planting styles utilized throughout Fine Point Business Park.



Parking lot buffers shall integrate low berms within the landscape plan where appropriate and feasible.

When parking facilities are included as a primary use, they shall not be subject to interior parking lot landscape requirements, nor shall interior islands be required. Perimeter street buffers shall be provided in keeping with the City of Aurora Landscape Code.



With the proximity to DIA, airport parking facilities as a primary use are both a feasible and desirable land use within the Fine Point Business Park. Given the specific nature of these business plans and operating models, they shall not be subject to parking lot interior landscape requirements as this would negatively affect the feasibility of this use. If curbed, interior islands are included within the parking areas, the applicant may choose to include landscape within these areas at their discretion.



A mixture of native and riparian vegetation shall be used to integrate detention ponds into their surroundings. Creative solutions should be examined for the possible use of water quality areas into the development. These methods can slow runoff, improve water quality, provide habitat for water fowl and can look very attractive throughout the seasons.

Walls should be kept to a minimum with preference towards vegetated slopes not greater than 3:1.



Native grass seed shall be applied in open space areas.

