

# **SITE SAFETY AND EMERGENCY ACTION PLAN**



**District Office  
650 Southgate Drive  
Windsor, CO 80550**

**Jamaso Lateral**

**Address: Not Required**

**CITY OF AURORA, COLORADO**

**Proposed Start Date: 1st Quarter 2023**



## **Table of Contents**

Section 1 – Signature Page

Section 2 – Site specific information

- a. Site Safety Requirements
- b. Emergency muster/assembly point(s)
- c. 911 Address and GPS coordinates
- d. Site description
- e. Nearby schools and other High Occupancy Buildings
- f. Directions to project locations
- g. Location of SDS sheets
- h. Location of sign-in sheets, JSA, safety forms

Section 3 – Maps & Documents

- a) Site Map
  - i. 1,000' Buffer zones and location of nearest Building Unit(s)

Section 4 – List of Emergency Contacts

- a) Crestone Peak Resources contact information.
- a) Crestone Peak Resources community/media relations contact information
- b) First responder contact information
- c) Regulatory contact information
- d) Nearest hospital
- e) Spill response organization contact information.

Section 5 – Spill Response and Reporting

- a) Spill Response
- b) Spill Reporting

Section 6 – Reportable storage quantity's

- a) Reportable quantities
- b) Tier II Reporting

Section 7 – Evacuation Information

- a) Evacuation plan procedures (public)

Section 8 – Coordination with First Responder Agencies



**SECTION 1**  
**SITE SPECIFIC INFORMATION**

<b>Crestone Peak Resources</b>			
<b>Name</b>	<b>Signature</b>	<b>Title</b>	<b>Date</b>
<b>Fire District</b>			
<b>Name</b>	<b>Signature</b>	<b>Title</b>	<b>Date</b>

.



## **SECTION 2**

### **SITE SPECIFIC INFORMATION**

**a) Site Safety Requirements and General Information**

The minimum personal protective equipment (PPE) to enter any Crestone Peak Resources production location includes hard hat, safety glasses, safety toe boots, fire resistant clothing (FRC), and a 4-gas monitor. All contractors and visitors are responsible for providing their employees with the appropriate training on and use of PPE while on Crestone Peak Resources locations. In addition, all contract personnel entering a Crestone Peak Resources location to perform work must understand and abide by Crestone Peak Resources' contractor expectations relating to environmental, health, and safety requirements.

The primary hazards that any person must be aware of while on a Crestone Peak Resources pipeline project is limited due to this being a new build. Hazards increase when working close to existing gas pipelines and will be identified on the daily JSA. Known hazards are open trenches, large construction equipment, welding and cutting, overhead loads, and other moving vehicles. These hazards can vary depending on the work being performed daily.

**b) Emergency Muster/Assembly point(s)**

**Jamaso Lateral**

Muster points will be changing as the work progresses daily. Muster locations will be identified during all safety briefings and established on the JSA's.

**c) 911 Address**

**Legal Description** – Sections 3 and 4, Township 4 South, Range 65 West

**Address** – Not Required

**d) Site description**

The Jamaso Lateral pipeline easements is located within both the City of Aurora and Arapahoe County, in Sections 3 & 4, Township 4 South, Range 65 West. The portions of the Jamaso Lateral pipeline easement that are located in the City of Aurora are approximately 4,660 feet long (2,420 feet in Section 3 and 2,240 feet in Section 4). The Jamaso Lateral pipeline easement within the City of Aurora will be within an existing thirty-foot-wide (Section 3) and fifty-foot-wide (Section 4) permanent easement. The easement will contain a steel, natural gas pipeline, six inches in diameter, and a steel, crude oil pipeline, six inches in diameter. The Jamaso Lateral pipelines will run from the Jamaso Oil & Gas Pad to the existing Spine G North. The Jamaso Oil & Gas Well Pad is located in Section 4, Township 4 South, Range 65 West in the City of Aurora.



e) **Nearby schools and other High Occupancy Buildings**

No Schools or high occupancy buildings near this project

f) **Directions to Project Locations**

**Jamaso Lateral**

Access to the Jamaso Lateral will be taken from the existing Jamaso Oil & Gas Well Pad gravel access road off of North Powhatan Road onto the Jamaso Lateral pipeline easement in Section 4, within the City of Aurora. Access to the lateral will also be taken from the existing Property Reserve Pad 2 Oil & Gas Well Pad gravel access road off of North Hayesmount Rd, located in Section 3, within the City of Aurora. The construction traffic will follow routes per the approved Road Maintenance Agreement (Crestone Aurora Road Maintenance Agreement Version 2018.01.03). The weight of the loads for construction traffic will have a maximum load of 140,000 lbs.

g) **Location of SDS sheets**

Depending on the operations taking place on location, the chemicals that may be present will vary. Regardless, hazard communication is a critical safety measure and Safety Data Sheets (SDS's) will be available from the Company Representative present or the contractor performing work on location. All SDS sheets are available through the following link, but can only be accessed by Civitas employees- <https://chemmanagement.ehs.com/9/52B6C4F1-9454-4F70-86F1-15370D01243A>

h) **Sign-In Sheets, JSAs, and Safety Forms**

During construction activities all employees and approved visitors to the **Jamaso Lateral** will be required to sign the contractor JSA at the construction location where they will be provided with a detailed safety briefing of current operations and all safety precautions that must be adhered to while on location. In addition, all who enter the location must also sign out upon their departure. Contractors are required to account for all persons entering or leaving location during active operations and in the event of an incident.

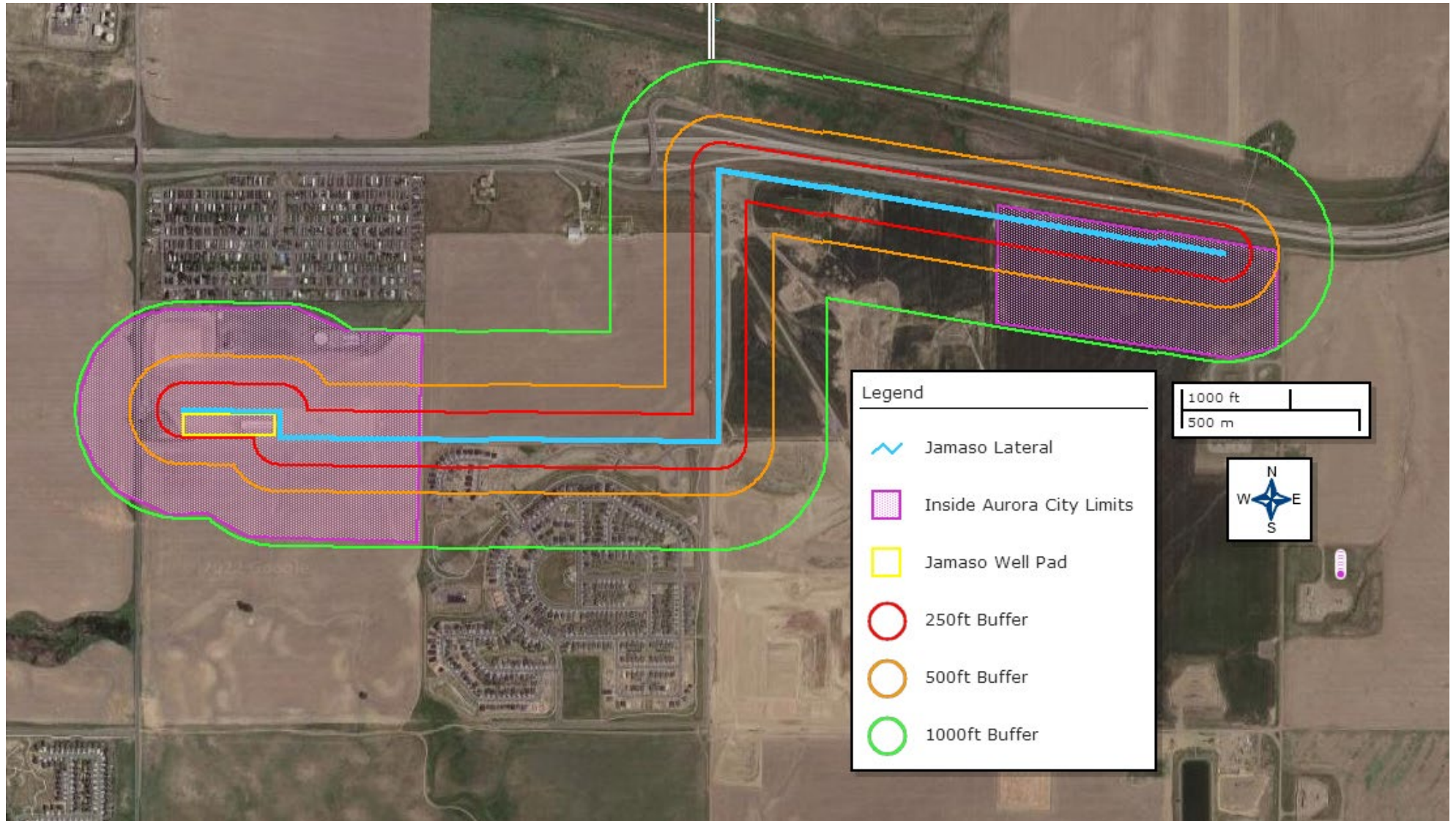
No unauthorized personnel will be allowed on location without first contacting a company representative. JSA's are written every day, per task, or per shift if work crews are working 24/7 and can be found on location. This is performed by each contractor and kept in their files for review.



### Section 3

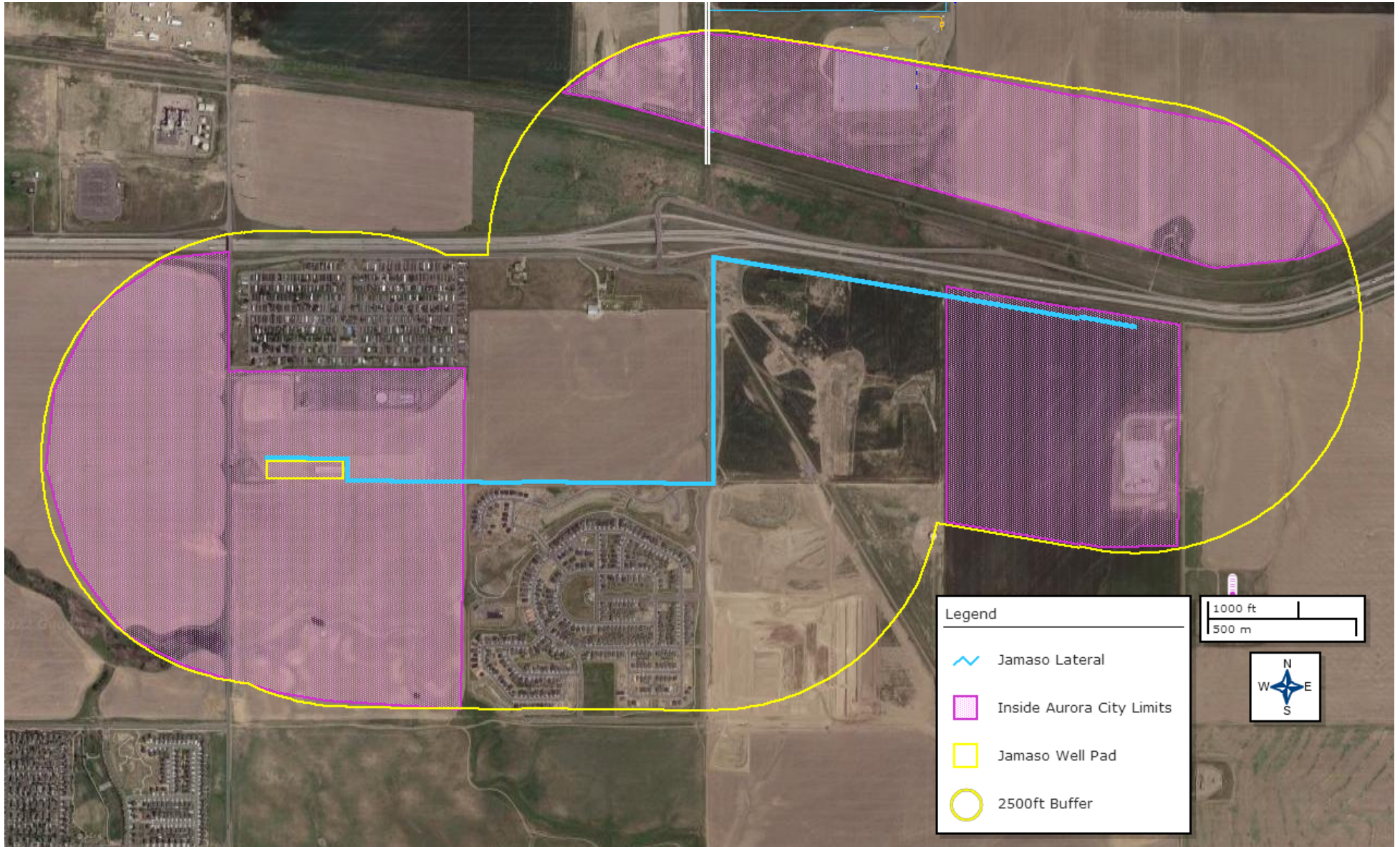
#### Jamasso Lateral

250', 500', & 1,000' Buffer





Jamaso Lateral  
2500ft Buffer Map





**Section 4**  
**List of Emergency Contacts**

**a) Crestone Peak Resources**

Name	Office Phone	Emergency/Cell

**b) Crestone Peak Resources community/media relations**

Name	Office	Cell Phone

**c) First Responders**

Name	Emergency	Office Number
Aurora Fire Department	911	303-326-8999
Aurora Police Department	911	303-739-6000
Aurora OEM	911	303-739-7000
Colorado State Highway Patrol	911	719-775-2964

**d) Regulator Contacts**

Name	Office Phone	Cell Phone
COGCC	303-894-2100	none
CDPHE	877-518-5608	none
Colorado Parks & Wildlife	303-291-7227	none
National Response Center	800-424-8802	none



**e) Medical Facilities**

Name	Office Phone	Address
University of Colorado Hospital, Level 1 Trauma	720-848-0000 (911)	12605 E. 16 <sup>th</sup> Avenue Aurora Co 80045
Medical Center of Aurora, Level 2 Trauma	303-695-2600 (911)	1501 S Potomac St, Aurora Co 80012

**f) Spill Response Organization**

Name	24/7 Emergency	Non-emergency
EnviroServe	800-488-0910	NA
CES	800-310-7445	NA

**g) Fire or explosion**

Name	Office Phone
Aurora Fire Department	911
Northern Colorado Medical Facility (Burn Unit)	970-810-4121
City of Aurora Office of Emergency Management	911 or 303-739-7000

**h) Government Agencies**

Name	Office Phone
Aurora Police Department	911 or 303-739-6000
COGCC	303-894-2100
CDPHE	877-518-5608
Aurora OEM	911 or 303-739-7000

**i) Railroad Emergency Response**

Name	Office Phone
Union Pacific Railroad	888-877-7267



## **Section 5**

### **Spill Response and Clean Up**

#### **a) Spill Response**

There are multiple types of hydrocarbons which can be released/spilled during pipeline construction. Refined petroleum products such as diesel, gasoline, and motor oil spills are less common, but still equally important to mitigate. If a spill is found reportable, it will be mitigated in accordance with Colorado Oil and Gas Conservation Commission (COGCC) and Colorado Department of Public Health and Environment (CDPHE) guidelines.

Once a release has been identified, it will be immediately stopped and contained if possible and is safe to do so. When containing a spill; pig blankets, snakes, absorbent materials, or earthen berms will be constructed around the release to keep material from spreading. These materials will be provided by third party contractors and kept on-site. Diligent efforts will be made to minimize contact with live vegetation or open water if release is outside of secondary containment structures.

In the event of a large incident requiring outside assistance, Crestone Peak Resources has contracted with Apex who possesses a working knowledge of oil and gas operations, emergency response and Incident Command. Once notified Apex personnel can be on location from 1 to 2 hours.

#### **b) Spill Reporting**

What determines a reportable spill and to whom does the report go?

- A spill/release will be reported to the COGCC if released material is property of Crestone Peak Resources and meets the COGCC reporting thresholds (see below), an example would be crude oil released from a separator or produced water from a water vault.
- A spill/release will be reported to the Arapahoe County LEPC and City of Aurora OEM if released material is property of Crestone Peak Resources and meets the COGCC reporting thresholds (see below),
- A spill/release will be reported to the CDPHE if released material is in the custody of a third party for spills that meet CDPHE reporting thresholds, are of any size that impact or threaten to impact waters of the state, a residence or occupied structure, livestock or public byway. An example would be an oil hauler over filling a truck and spills product onto the ground next to a flowing irrigation ditch.



Spills are reportable to the COGCC in the following circumstances:

1. the spill or release impacts or threatens to impact any waters of the state, a residence or occupied structure, livestock, or a public byway.
2. a spill or release in which 1 barrel or more is released outside of berms or other secondary containment; or
3. any spill or release of 5 barrels or more. If the spill impacts or threatens to impact waters of the state (which include surface water, ground water and dry gullies or storm sewers leading to surface water), it must also be reported immediately to CDPHE (25-8-601 CRS).
4. Petroleum releases of 25 gallons or more

Once a spill is determined reportable, there is a 24-hour deadline to make initial notification to the COGCC or CDPHE depending on product ownership. Spills/releases in the custody of Crestone Peak Resources will be reported by a Company representative. Spills/releases in the custody of a third party will be reported by the responsible company's EHS Department to the appropriate agency and to Crestone Peak Resources.

These regulatory guidelines will be strictly followed by Crestone Peak Resources and any contractors operating under Crestone Peak Resources guidance during all activities.



## **Section 6**

### **Reportable quantities**

#### **a) Reportable quantities**

Mandated by Section 312 of the Emergency Planning and Community Right-To-Know Act (EPCRA) – also known as SARA Title III – the Tier II form captures information about the types, quantities, and locations of hazardous chemicals at a given facility. The form also lists contact information for the facility's designated emergency point-of-contact.

Any facility that is required to maintain MSDSs (or SDSs) under the Occupational Safety and Health Administration (OSHA) regulations for hazardous chemicals stored or used in the workplace.

Facilities with chemicals in quantities that equal or exceed the lists of lists thresholds must report.

- Propane, benzene, propene, and methane are on the lists and are known to be in crude oil. In addition, diesel is on the lists and may be stored on sites during construction.

#### **b. Reportable requirements**

If your facility will meet the requirements under 40 CFR, you must submit your Tier II report to the state every year before March 1<sup>st</sup>.

These regulatory guidelines will be strictly followed by Crestone Peak Resources and any contractors operating under Crestone Peak Resources guidance during all activities.



## **Section 7**

### **Evacuation Information**

#### **a. Evacuation Plan Procedures (public)**

The procedure to be used in alerting nearby persons in the event of any occurrence that could pose a threat to life or property will be arranged and completed with public officials in detail.

In the event of an actual emergency, the following steps will be immediately taken:

1. The Crestone Peak Resources representative will immediately notify proper authorities, including the sheriff's office, highway patrol, and any other public officials as described above and will enlist their assistance in warning residents and transients in the calculated radius of exposure.
2. The Crestone Peak Resources will coordinate with local authorities to warn residents' down-wind of the location and within radius of exposure from the well site. Additional evacuation zones may be necessary as the situation warrants.
3. The Crestone Peak Resources representative will coordinate with appropriate emergency personnel to divert traffic in the vicinity away from the potentially dangerous area. No trespassing and warning signs will be posted at the entrance to the well site. The contract company will monitor essential and non-essential traffic on-site.
4. General:
  - a. The area included within the radius of exposure is the zone with the maximum potential hazard. When it is determined that conditions exist which create an additional area (beyond the initial zone of maximum potential hazard) vulnerable to possible hazard, public areas in the additional hazardous area will be evacuated.
  - b. In the event of a disaster, after the public areas have been evacuated and traffic stopped, it is expected that local civil authorities will have arrived and within a few hours will have assumed direction of and control of the public, including all public areas. Crestone Peak Resources will fully cooperate with these authorities and will exert every effort by careful advice to such authorities to prevent panic or rumors.
  - c. Crestone Peak Resources will dispatch appropriate personnel to the disaster site as soon as possible. The company's personnel will cooperate with and provide such information to civil authorities as they might require.



**Section 8**  
**Coordination with First Responder Agencies**

- a) Crestone Peak Resources will communicate site construction, drill spud, completion operations and Production Turn-In-Line dates to the City of Aurora Office of Emergency Management for coordination/communication with local first responders. These start dates will be provided a minimum of 7 business days prior to commencement or change in oil and gas development operations.
- b) In the event of an emergency requiring First Responders, Unified Command will be established between the Crestone Peak Resources appointed company man on location and First Responders present. Unified Command post will be established based on conditions present at time of incident.
- c) Bennett- Watkins Fire has a cache of foam at the ARB facility located at I-70 and Manilla Rd that can be deployed via mutual aid to this location if needed.
- d) Crestone Peak Resources EHS representative and first responders identified in this Site Safety and Emergency Action Plan have reviewed this plan and discussed coordination efforts in the event of an emergency requiring first responder assistance.