

TAB 11: LANDSCAPE STANDARDS

Landscape Standards

FORM G: LANDSCAPE STANDARD MATRIX

Landscape Item	Brief Description of the Feature	Location of the Standards in the Application Package
1. Overall landscape concept and palette of plant materials used to carry it out	The landscape character will be a defining characteristic for the community; and the landscape design will generally respect the contextual prairie landscape through the use of an indigenous and adapted native plant palette, selective/limited use of turf grass, and bold landscape design.	Imagery is located in the Landscape Design Standards Tab 11.4-11.8
2. Landscape design at entry monumentation and key entry points	The landscape design surrounding the entry features will complement the monumentation without competing with it. Through the use of native plantings, the monuments can either be integrated into more passive spaces for vehicular viewing or into more active plaza type spaces for pedestrian interaction, where the landscape design will be used to define the use areas. The landscape will provide year-round interest.	Imagery is located in the Urban Design Standards Tab 10.3-10.7
3. Landscape Standards along E-470 or I-70 (if applicable)	N/A	N/A
4. Landscape standards along arterial and collector roads	The landscape along arterial and collector roads will provide year-round interest, while being engaging for both the vehicular and pedestrian experience. Plant materials will be used for architectural effect through the design of planter beds that also integrate horizontal and vertical layering of plants. This will serve to create interesting and dynamic visual corridors for drivers that also allow for a different experience for pedestrians. Plant quantities and buffer widths for all development within Everlea will meet or exceed the City of Aurora landscape requirements. Dense plantings along arterials is encouraged to provide privacy and reduce noise pollution from the adjacent roads. Where townhomes or duplexes are adjacent to local roads no buffer requirement shall apply.	Imagery is located in the Urban Design Standards Tab 10.11
5. Landscape standards along local roadways	The landscape along the local roadways will primarily consist of street trees. Street trees have a significant impact on the overall experience of a neighborhood and will consist of deciduous canopy trees that provide for winter exposure and summer shade. The landscape along local roads will have more formal tree spacing and should strive to blend with the landscape on adjacent parcels. Where commercial or multifamily buildings are located along local roads the requirements in the Unified Development Ordinance (UDO) shall apply. Where roadways have detached sidewalks curbside landscaping shall be required per the UDO requirements.	Imagery is located in the Urban Design Standards Tab 10.5-10.7
6. Landscape standards in commercial and public gathering areas (tree openings, planters, flower beds, screening at parking lots, etc.)	The landscape design in commercial and public gathering areas will utilize the native plant palette, albeit in a more formal setting. A variety of raised planters, in grade planters and pots can be used in these more urban spaces to aid in circulation and define space, while providing a comfortable setting for resting and social interaction. Planter beds with enhanced native and ornamental planting will be utilized to enhance key areas of the plan to bring attention to entrances, architectural features and gathering spaces.	Imagery is located in the Urban Design Standards Tab 10.15-10.16, and the Landscape Design Standards Tab 11.4 - 11.6
7. Landscape standards at detention/retention ponds and water features	A mixture of adaptable native plants and riparian vegetation shall be used to integrate detention ponds with their surroundings. Further, these plants will be utilized to aid in water quality filtration, flood control and the creation of wildlife habitat. Where necessary, the integration of walls shall be permitted in detention areas and should follow the wall standards established in this Master Plan, but vegetated slopes are still preferable. In more urban settings, creative solutions for the integration of water quality treatment are encouraged, and underground detention is permitted. The requirements for detention/ retention ponds will comply with the City of Aurora Unified Development Ordinance.	Imagery is located in the Landscape Design Standards Tab 11.8

The design standards listed in this matrix implement the design themes of the Master Plan and are intended to meet and/or exceed the current landscape standards provided by the Unified Development Ordinance and/or the landscape standards in effect at the time of submittal. If a conflict should exist between the Master Plan standards and the Unified Development Code or code in affect at the time of development, the more restrictive shall apply. All the photos and illustrations referenced by this matrix are representative of the level of design quality required by this Master Plan. Final designs to be submitted at the Site Plan level will not necessarily duplicate the exact illustrations, but will contain the same themes and dimensions as shown, and will be at the same or higher level of design quality, extent, and details.

FORM G: LANDSCAPE STANDARD MATRIX

Landscape Item	Brief Description of the Feature	Location of the Standards in the Application Package
8. Landscape buffers at parks, open space, and drainage	The main open space in the development will be the community park located along the northwest portion of the site along with the connections to the centrally located neighborhood park and open space/park spine that runs north/south through Everlea. In most cases, the parks and open spaces at Everlea are located across the road from residential and mixed uses to ensure their integration into the public realm, and to maximize visual connectivity, promoting safety and a sense of activity within the community. When units are located directly adjacent to parks and open space, landscape and planting design will be used to balance the fine line between creating privacy and still providing visual connectivity to the park, based upon the surroundings and unique situation relating to the architecture. Within the community park, landscape will be selectively located to preserve the view shed corridor that had been identified.	Imagery is located in the Urban Design Standards Tab 10.22-10.25, and the Landscape Design Standards Tab 11.6 - 11.8
9. Special standards at residential lots. (If residential backyards border open space or parks, indicate special standards)	The landscape design for residential lots along open space corridors and parks will be designed to create privacy for the homes as well provide interest along the public spaces. Elements such as large shrubs, dense trees, berming, and privacy fencing are encouraged. Privacy fencing along lot lines will also be allowed except when abutting parks and open space. Open rail fencing with individual gates are required along the edges of blocks, open space and park spaces.	Imagery is located in the Landscape Design Standards Tab 11.7
10. Landscaping integration at retaining walls	The intent of the landscape design integrating with the retaining walls will be to anchor the walls to the environment while softening them. The planting styles will be consistent with the landscape design of the greater area surrounding the specific retaining walls. Plant material should be appropriate to the space created by the retaining walls. No trees should be planted within 5’ of the wall foundation or in any area that would compromise retaining wall geo-grid integrity. If trees are required in these areas that shall be allowed to be transferred to the surrounding landscape so as to not negatively affect the viability of the retaining wall. Retaining walls shall be designed/located such that their placement does not negate the required buffer plant material should buffers be required where walls have been proposed.	Imagery is located in the Urban Design Standards Tab 10.8
11. Landscape standards at special facilities	Specimen plants and trees may be used to highlight civic and mixed-use buildings. The landscape design shall compliment the architecture and may be used to assist in pedestrian circulation. Shade trees may be located along trails and sitting areas to provide pedestrians with shade and create an inviting environment.	Imagery is located in the Urban Design Standards Tab 10.22-10.25
12. Buffer and setback exemptions for traditional street frontages	We are not seeking exemptions for traditional street frontages, but rather envision a scenario where street trees, in combination with curbside landscaping are used to define both the street frontage and specific neighborhood within Everlea.	Imagery is located in the Landscape Design Standards Tab 11.7
13. Commercial area screening adjacent to residential	Commercial areas adjacent to residential will follow the UDO with respect to screening and buffering.	N/A
14. Drive through screening, median landscaping, parking lot internal & external landscaping, and building perimeter landscaping	These landscape items will comply with the Unified Development Ordinance version in effect at the time of site plan approval.	N/A

The design standards listed in this matrix implement the design themes of the Master Plan and are intended to meet and/or exceed the current landscape standards provided by the Unified Development Ordinance and/or the landscape standards in effect at the time of submittal. If a conflict should exist between the Master Plan standards and the Unified Development Code or code in affect at the time of development, the more restrictive shall apply. All the photos and illustrations referenced by this matrix are representative of the level of design quality required by this Master Plan. Final designs to be submitted at the Site Plan level will not necessarily duplicate the exact illustrations, but will contain the same themes and dimensions as shown, and will be at the same or higher level of design quality, extent, and details.

Landscape Standards

Refined Prairie Plant Palette

Landscape design in Everlea is intended to highlight the various neighborhoods within the overall Community. Careful attention will be given to plant selection in terms of texture, variation of height, and seasonal color. All proposed landscape is to adhere to these standards as well as the requirements of the City of Aurora Codes. In case of a conflict between these standards and the City of Aurora requirements, the most restrictive requirements will govern. The landscape will at a minimum meet the landscape requirements in the UDO unless an adjustment is requested and granted at the site plan level. The landscape will aid in creating a distinctive character for the project by adding aesthetic value through the creation of pedestrian scale, displaying the seasonal characteristics and beauty of our regions’ plant material. The plant palette will employ a variety of forms, shapes, sizes, colors and textures to provide year round interest. The landscape will respond to technical site plan elements including building and surface parking locations, utilities, signage and sight lines. Most importantly the landscape will emphasize pedestrian amenity areas and entry points into the various areas of the project.

Native & Adapted Plant Species:

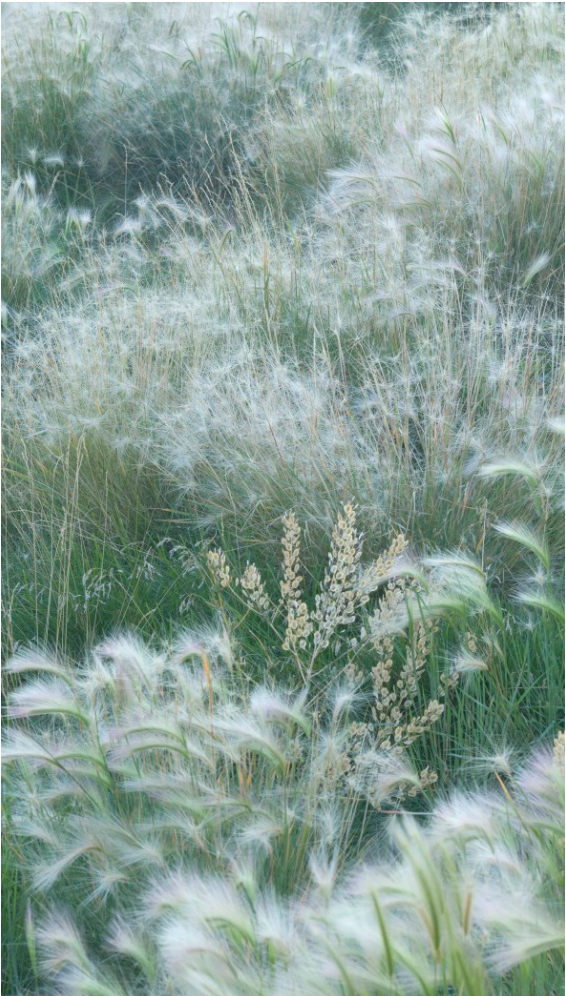
The plant list for Everlea is largely comprised of native and adapted plants inspired by the prairie landscape. These plants reinforce the sense of place created by this environment, re-establish plant and animal habitat and create beautiful, environmentally friendly spaces. Using native and regionally adapted plants celebrates the natural high prairie landscape and promotes a higher degree of sustainability due to the lower requirements for water, soil amendments and fertilizer.

Selective Use of Turf Lawn:

In accordance with the turf ordinance, turf is only permitted for programmed spaces and shall not be used for aesthetic or visual purposes. Turf shall not be used in any curbside landscape or medians. All turf areas and location will comply with the updated City of Aurora standards on the use of turf. The residential lot landscape and turf usage will comply with the updated COA requirements.

Bold Landscape Design:

Throughout the Everlea community the landscape design should be bold in terms of forms and massing of plants. The intent is to encourage larger massing of species. Native and regionally adapted shrubs, grasses, wildflowers, perennials, and groundcovers should be used as the dominant plant palette. A focus to vary plantings creates texture, color and contrast throughout the seasons.



Landscape Standards

Elements of a Low-Water Landscape

Waterwise landscapes deliver all of the bold forms and colors of traditional landscapes, but with minimal resources and less maintenance. As with any landscape, waterwise landscapes incorporate all the elements necessary for outdoor living and entertaining such as: Paths, parks and plazas to give the landscape form and direction. Arbors, trellises, outdoor furnishings for comfort, and plantings help divide the landscape into ‘rooms’, and to create shade and visual interest. It’s possible to have a garden that’s both water-conserving and beautiful, with plenty of lush foliage and a generous dose of seasonal flowers. Waterwise gardens take a bit more planning than ordinary landscapes, but over time they offer significant savings in labor costs—and, of course, water. A waterwise landscape can be as inviting as any other, and the Everlea community landscape design will utilize the following water saving principles.

Improve the Soil

- Test the existing soil in landscape areas for mineral and organic matter content to determine the proper soil amendment.
- Provide soil amendments per Landscape Installation Specification 02900 Section 3.7 of the Parks Manual.
- Use swales and buffers to direct run-off flow and encourage infiltration.

Plant in the right place

- Locate plants where they’ll get the sun (or shade) exposure and soil drainage they need.
- Group plants that have similar water needs so none get too little or too much water.

Shrink the lawn

- Blue grass turf needs significant amounts of water to stay green and lush. Everlea will employ a philosophy of reducing the amount of bluegrass turf by only utilizing bluegrass turf in areas that have programmed uses, as allowed by the City of Aurora Turf Ordinance.

Control weeds

- Weeds steal water needed by desirable plants. Use landscape fabrics and mulches to discourage growth.

Efficient irrigation system

- A fully automated irrigation system is required to support landscaping.
- Use of spray irrigation should be limited to turf or seeded areas. Shrub and perennial beds should use point source drip or dripper line with integral emitters as appropriate based on plant types and spacing.
- The irrigation system will use a rain or moisture sensor with an automatic control system to suspend operation during rain events.

Mulch

- Cover bare ground around each plant with a 3-inch layer of mulch to help conserve soil moisture, suppress weeds, and keep the soil cooler; renew annually. Organic types such as bark chips, shredded bark, or compost improve the soil as they break down, and encourage beneficial microbes.
- The use of rock mulch of different sizes and colors is also encouraged in appropriate areas. This mixing of rock sizes and colors can add visual interest to a xeric landscape are.



Landscape Standards

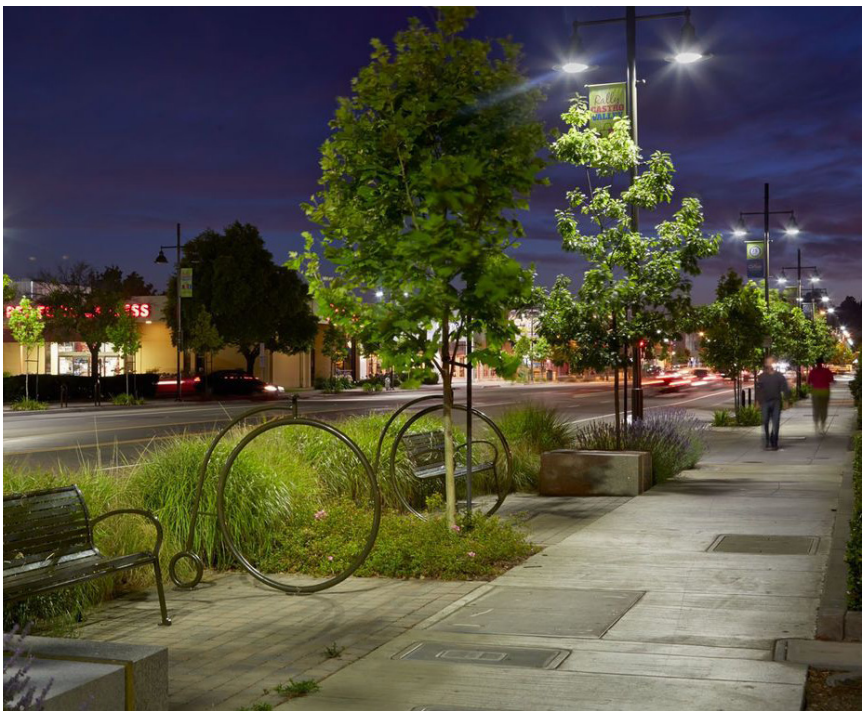
Plazas & Expanded Streetscapes

The intent of the plaza and expanded streetscape standards is the following:

- To provide open spaces such as plazas and publicly accessible courtyards, or promenades that serve as areas for relaxation, community interaction and create variety and interest in the pedestrian realm.
- To introduce elements of nature into the urban environment.
- To allow for additional space adjacent to trails or buildings to accommodate special amenities such as seating, sculpture and planters.
- To provide organizing features for site planning.
- To establish links in a system of open spaces within and outside of the site design.

The design standards utilized to accomplish the intent are the following:

- Plazas shall be architecturally defined by the use of appropriate plantings, or buildings that surround them.
- All plazas, publicly-accessed courtyards, and promenades shall provide direct, unobstructed access at the public right-of-way on a portion of the open space frontage. Where elevation changes or other obstructions must be accommodated, no walls or other obstructions within twenty feet (20') of the public right-of-way may be more than three feet (3') in height above the adjoining public sidewalk and not exceed height limitations within sight distance triangles.
- Seating shall be integrated into public plaza spaces.
- Seating shall have a minimum depth of sixteen inches (16").
- Seating thirty inches (30") or more in depth may count double provided there is access to both sides.
- Surfaces higher than thirty-six inches (36") or less than twelve inches (12") shall not count toward meeting the seating requirements.
- The tops of walls, including those for planters, pools, and fountains, may be counted toward meeting the seating requirements provided they meet the dimensional requirements above and are not obstructed by foliage.
- One tree (minimum 2-1/2" caliper at time of planting) must be provided for each 625 square feet of plaza up to 2,500 square feet. One additional tree is required for each additional 1,000 square feet of plaza. No less than twenty-five percent (25%) or more than forty percent (40%) of the plaza area shall be utilized for planted landscaping.
- Food or retail kiosks, such as for a Farmers market or flower stand, shall be no more than 200 square feet in area per kiosk.
- Arbors and trellises may exceed maximum landscape area when incorporating public seating.
- Appropriate litter receptacles shall be provided at each plaza or courtyard area.
- Plazas and expanded streetscapes should connect to trail systems, parks or other similar community amenities.
- As public amenities, open space and plazas should be designed to be easily accessible and comfortable for as much of the year as possible. They should provide shade in summer, sun in winter and protection from wind at all times of the year.
- Plazas and expanded streetscapes are appropriate locations for public art.
- Design of plazas, publicly accessible courtyards and expanded streetscapes should take into consideration ease of maintenance and snow and ice removal.



LANDSCAPE STANDARDS

Landscape Buffers

BUFFER ALONG LOCAL ROADS

Landscape along local roads may be a mixture of trees and low water native and adapted plants, within the curbside landscape. The landscape design may vary somewhat throughout the neighborhoods, but use of key plant species will ensure consistency within the overall community. Where landscape areas wider than 8’ occur, the use of multiple ground covers, in addition to planting, are required to provide visual interest on the ground plane while plants are establishing.



BUFFER BETWEEN RESIDENTIAL AND OPEN SPACE

Where attached or multifamily units are located directly adjacent to parks or open space, vegetative buffering is required to reduce the impact of the uses upon each other and provide some privacy for the residential units. Where site conditions and grading permit it, berming may be incorporated to enhance the buffer. From a landscape perspective, 1 tree and 10 shrubs per 30’ of adjacent frontage are required.



Example of landscape buffer between homes and a park / open space.



Example of landscape buffer with berming between homes and a park / open space.

LANDSCAPE STANDARDS

Detention/Retention Ponds and Water Quality

A mixture of native, adapted and riparian vegetation shall be used to integrate detention ponds into their surroundings.

In the more urban portions and commercial portions of the community creative stormwater solutions are encouraged. These may include more structured and formal arrangements that are integrated within plaza or hardscape areas, and may require walls that are consistent with their surroundings due to spatial constraints. Underground detention is permitted in these situations.



Detention ponds which can be used when dry are encouraged.



More naturalistic detention ponds are encouraged in residential areas.



Underground detention is permitted in more urban areas.



Creative solutions to detention and water quality are encouraged in commercial areas.



An example of water quality and detention with tree and shrub planting



Here water quality treatment occurs near a commercial building.

In other areas of the Everlea, a mixture of native, adapted and riparian vegetation shall be used to integrate detention ponds into their surroundings. As much as is feasible, within engineering constraints, these ponds should be organic in nature. Large boulders may be integrated into the landscape design to bring visual interest. 1 tree / 10 shrubs are required per 4,000sf of pond area above the 100yr water surface elevation. Walls should be kept to a minimum with preference towards vegetated slopes not greater than 3:1.

SAMPLE DETENTION BASIN

Detention basin shall be organic in shape, as much as is feasible, to compliment its natural surroundings.



PLANT LIST					
DECIDUOUS TREES					
Botanical Name	Common Name	Height X Spread	Spacing	Min. Size	Notes
<i>Acer platanoides</i> ‘Royal Red’	Royal Red Maple	30-40’ x 40-50’	NA	2.5” Caliper	
<i>Acer freemanii</i> ‘Autumn Blaze’	Autumn Blaze Maple	40-50’ x 30-40	NA	2.5” Caliper	
<i>Aesculus x camea</i> ‘Ft. McNair’	Red Horsechestnut	40-50’ x 20-30’	NA	2.5” Caliper	City of Aurora recommended xeriscape plant
<i>Betula platyphylla</i> ‘Whitespire’	Asian White Birch	30-40’ x 20-30’	NA	2.5” Caliper	Restricted to drainage corridors or detention areas
<i>Catalpa speciosa</i>	Western Catalpa	40-60’ x 30-50’	NA	2.5” Caliper	City of Aurora recommended xeriscape plant
<i>Celtis occidentalis</i>	Western Hackberry	50-60’ x 40-50’	NA	2.5” Caliper	City of Aurora recommended xeriscape plant
<i>Gleditsia triacanthos inemis</i> ‘Shademaster’ TM	Shademaster Honeylocust	40-50’ x 30-35’	NA	2.5” Caliper	City of Aurora recommended xeriscape plant
<i>Gleditsia triacanthos</i> ‘Imperial’	Imperial Honeylocust	30-35’ x 30-35’	NA	2.5” Caliper	City of Aurora recommended xeriscape plant
<i>Gleditsia triacanthos</i> ‘Skyline’	Skyline Honeylocust	40-50’ x 30-35’	NA	2.5” Caliper	City of Aurora recommended xeriscape plant
<i>Gymnocladus dioica</i>	Kentucky Coffeetree	50-60’ x 40-50’	NA	2.5” Caliper	City of Aurora recommended xeriscape plant
<i>Pyrus calleryana</i> ‘Chanticleer’	Chanticleer Pear	20-30’ x 15-20’	NA	2.5” Caliper	City of Aurora recommended xeriscape plant
<i>Quercus bicolor</i>	Swamp White Oak	40-60’ x 40-60’	NA	2.5” Caliper	City of Aurora recommended xeriscape plant
<i>Quercus</i> ‘Crimson Spire’	Crimson Spire Oak	40-60’ x 15-20’	NA	2.5” Caliper	City of Aurora recommended xeriscape plant
<i>Quercus macrocarpa</i>	Bur Oak	50-80’ x 50-80’	NA	2.5” Caliper	City of Aurora recommended xeriscape plant
<i>Quercus robur</i>	English Oak	40-60’ x 40-60’	NA	2.5” Caliper	City of Aurora recommended xeriscape plant
<i>Quercus robur</i> ‘Fastigiata’	Columnar English Oak	40-60’ x 15-20’	NA	2.5” Caliper	City of Aurora recommended xeriscape plant
<i>Quercus robur x bicolor</i> ‘Long’	Regal Prince Oak	40-45’ x 15-20’	NA	2.5” Caliper	City of Aurora recommended xeriscape plant
<i>Quercus rubra</i>	Northern Red Oak	40-60’ x 40-60’	NA	2.5” Caliper	City of Aurora recommended xeriscape plant
<i>Salix alba</i> ‘Vitellina’	Golden Willow	40-50’ x 30-40’	NA	2.5” Caliper	Restricted to drainage corridors or detention areas
<i>Tilia americana</i> ‘Redmond’	Redmond American Linden	40-50’ x 30-40’	NA	2.5” Caliper	Xeric-rated plant from the Garden Centers of Colorado
<i>Tilia cordata</i> ‘Greenspire’	Greenspire Littleleaf Linden	30-40’ x 25-35’	NA	2.5” Caliper	Xeric-rated plant from the Garden Centers of Colorado
<i>Tilia tomentosa</i>	Silver Linden	40-50’ x 30-40’	NA	2.5” Caliper	Xeric-rated plant from the Garden Centers of Colorado
ORNAMENTAL TREES					
Botanical Name	Common Name	Height X Spread	Spacing	Min. Size	Notes
<i>Acer ginnala</i>	Amur Maple	15-20’ x 15-20’	NA	2” Caliper	City of Aurora recommended xeriscape plant
<i>Acer tataricum</i>	Tatarian Maple	20-25’ x 15-20’	NA	6’-8’ Clump	City of Aurora recommended xeriscape plant
<i>Aesculus glabra</i>	Ohio Buckeye	20-30’ x 30-40’	NA	2” Caliper	City of Aurora recommended xeriscape plant
<i>Amelanchier canadensis</i>	Shadblow Serviceberry	15-25’ x 15-20’	NA	6’-8’ Clump	City of Aurora recommended xeriscape plant
<i>Amelanchier x grand.</i> ‘Autumn Brilliance’	Autumn Brilliance Serviceberry	15-25’ x 15-20’	NA	6’-8’ Clump	City of Aurora recommended xeriscape plant

Plant list is a sample. Additional trees/shrubs/grasses/perennials may be used in appropriate landscape areas.

<i>Carpinus betulus ‘Fastigiata’</i>	Columnar European Hornbeam	30-35’ x 15-18’	NA	2” Caliper	Xeric-rated plant from the Garden Centers of Colorado
<i>Crataegus sp.</i>	Hawthorn	15-30’ x 15-30’	NA	6’-8’ Clump	City of Aurora recommended xeriscape plant
<i>Koelreuteria paniculata</i>	Golden Rain Tree	20-30’ x 20-30’	NA	2” Caliper	City of Aurora recommended xeriscape plant
<i>Malus sp.</i>	Crabapple	15-25’ x 15-25’	NA	2” Caliper	City of Aurora recommended xeriscape plant
<i>Malus ‘Honey Crisp’</i>	Honeycrisp Semi-Dwarf Apple	15’ x 12’	NA	2” Caliper	City of Aurora recommended xeriscape plant
<i>Malus sylv. ‘McIntosh Semi-Dwarf’</i>	McIntosh Semi-Dwarf Apple	12-15’ x 10-14’	NA	2” Caliper	City of Aurora recommended xeriscape plant
<i>Malus x ‘Red Delicious’</i>	Red Delicious Apple	15’ x 12’	NA	2” Caliper	City of Aurora recommended xeriscape plant
<i>Prunus cerasifera ‘Newport’</i>	Newport Flowering Plum	15-20’ x 15-20’	NA	2” Caliper	City of Aurora recommended xeriscape plant
<i>Prunus maackii</i>	Amur Chokecherry	20-30’ x 20-25’	NA	2” Caliper	City of Aurora recommended xeriscape plant
<i>Prunus padus</i>	Mayday Tree	20-30’ x 20-30’	NA	6’-8’ Clump	City of Aurora recommended xeriscape plant
<i>Prunus subhirtella ‘Pendula’</i>	Weeping Cherry	20-30’ x 15-20’	NA	6’-8’ Clump	City of Aurora recommended xeriscape plant
<i>Prunus virginiana ‘Shubert’</i>	Shubert Chokecherry	20-30’ x 15-20’	NA	2” Caliper	City of Aurora recommended xeriscape plant
<i>Prunus americana ‘Chinese’</i>	Chinese Apricot	15’ x 10’	NA	2” Caliper	City of Aurora recommended xeriscape plant
<i>Prunus americana ‘Goldcot’</i>	Goldcot Apricot	15-20’ x 15-25’	NA	2” Caliper	City of Aurora recommended xeriscape plant
<i>Prunus ameniaca ‘Moongold’</i>	Moongold Apricot	15-20’ x 15-25’	NA	2” Caliper	City of Aurora recommended xeriscape plant
<i>Prunus avium ‘Stella’</i>	Compact Stella Cherry	10’ x 8’	NA	2” Caliper	City of Aurora recommended xeriscape plant
<i>Prunus avium ‘Lapins’</i>	Lapins Cherry	15’ x 10’	NA	2” Caliper	City of Aurora recommended xeriscape plant
<i>Prunus cerasus ‘Montmorency’</i>	Montmorency Sour Pie Cherry	15’ x 10’	NA	2” Caliper	City of Aurora recommended xeriscape plant
<i>Prunus domestica ‘Italian’</i>	Italian Plum	15’ x 15’	NA	2” Caliper	City of Aurora recommended xeriscape plant
<i>Prunus domestica ‘Stanley’</i>	Stanley Plum	15’ x 12’	NA	2” Caliper	City of Aurora recommended xeriscape plant
<i>Prunus ‘Mount Royal’</i>	Mount Royal Plum	15’ x 10’	NA	2” Caliper	City of Aurora recommended xeriscape plant
<i>Prunus persica ‘Elberta’</i>	Elberta Peach	15’ x 12’	NA	2” Caliper	City of Aurora recommended xeriscape plant
<i>Prunus persica ‘Polly’</i>	Polly Peach	12’ x 10’	NA	2” Caliper	City of Aurora recommended xeriscape plant
<i>Prunus persica ‘Reliance’</i>	Reliance Peach	15’ x 12’	NA	2” Caliper	City of Aurora recommended xeriscape plant
<i>Prunus ‘Superior’</i>	Superior Plum	15’ x 10’	NA	2” Caliper	City of Aurora recommended xeriscape plant
<i>Pyrus calleryana ‘Cleveland Select’</i>	Cleveland Select Pear	25-30’ x 12-15’	NA	2” Caliper	City of Aurora recommended xeriscape plant
<i>Pyrus communis ‘Beaurre d’Anjou’</i>	D’Anjou Pear	15’ x 12’	NA	2” Caliper	City of Aurora recommended xeriscape plant
<i>Pyrus x ‘Summercrisp’</i>	Summercrisp Pear	15’ x 15’	NA	2” Caliper	City of Aurora recommended xeriscape plant
<i>Sorbus aucuparia ‘Cardinal Royal’</i>	Cardinal Royal Mountain Ash	30-35’ x 15-20’	NA	2” Caliper	Xeric-rated plant from the Garden Centers of Colorado
<i>Syringa reticulata</i>	Japanese Tree Lilac	15-25’ x 15-20’	NA	6’-8’ Clump	City of Aurora recommended xeriscape plant
EVERGREEN TREES					
Botanical Name	Common Name	Height X Spread	Spacing	Min. Size	Notes
<i>Juniperus chinensis ‘Spartan’</i>	Spartan Juniper	15-20’ x 4-6’	NA	6’	City of Aurora recommended xeriscape plant
<i>Juniperus scopulorum ‘Medora’</i>	Medora Juniper	15-20’ x 3-5’	NA	6’	City of Aurora recommended xeriscape plant

Plant list is a sample. Additional trees/shrubs/grasses/perennials may be used in appropriate landscape areas.

<i>Juniperus scopulorum</i> ‘Skyrocket’	Skyrocket Juniper	15-20’ x 2-3’	NA	6’	City of Aurora recommended xeriscape plant
<i>Picea abies</i> ‘Cupressina’	Fastigate Norway Spruce	15-20’ x 2-3’	NA	6’	
<i>Pinus aristata</i>	Bristlecone Pine	20-40- x irregular	NA	6’	City of Aurora recommended xeriscape plant
<i>Pinus cembra</i> ‘Swiss Stone’	Swiss Stone Pine	20-25’ x 10-12’	NA	6’	City of Aurora recommended xeriscape plant
<i>Pinus densiflora</i> ‘Umbraculifera’	Tanyosho Pine	6-10’ x 6-10’	NA	6’	City of Aurora recommended xeriscape plant
<i>Pinus edulis</i>	Pinyon Pine	20-30’ x 10-20’	NA	6’	City of Aurora recommended xeriscape plant
<i>Pinus flexilis</i> ‘Vanderwolf’s Pyramidal’	Vanderwolf’s Pyramidal Pine	20-30’ x 10-15’	NA	6’	City of Aurora recommended xeriscape plant
<i>Pinus heldreichii</i> var. <i>Leucodermis</i>	Bosnian Pine	15-20’ x 8-12’	NA	6’	City of Aurora recommended xeriscape plant
<i>Pinus nigra</i>	Austrian Pine	40-60’, x 20-40’	NA	6’	City of Aurora recommended xeriscape plant
<i>Pinus nigra</i> ‘Arnold Sentinel’	Columnar Austrian Pine	20-25’ x 5-7’	NA	6’	City of Aurora recommended xeriscape plant
<i>Pinus ponderosa</i>	Ponderosa Pine	60-80’ x 25-30’	NA	8’	City of Aurora recommended xeriscape plant
<i>Pinus strobiformis</i>	Southwestern White Pine	40-50’ x 20-30’	NA	8’	City of Aurora recommended xeriscape plant
<i>Pinus sylvestris</i>	Scotch Pine	30-50’ x 20-30’	NA	8’	City of Aurora recommended xeriscape plant
<i>Pseudotsuga menziesii</i>	Douglas Fir	50-80’ x 15-25’	NA	8’	City of Aurora recommended xeriscape plant
EVERGREEN AND BROADLEAF EVERGREEN SHRUBS					
Botanical Name	Common Name	Height X Spread	Spacing	Min. Size	Notes
<i>Cytisus Dallimorei</i> ‘Lena’	Lena Broom	3’ x 4’	3’o.c.	5 gallon	City of Aurora recommended xeriscape plant
<i>Euonymus fortunei</i> ‘Coloratus’	Purpleleaf Winter Creeper	18-24" x 3-4'	3’o.c.	5 gallon	City of Aurora recommended xeriscape plant
<i>Euonymus fortunei</i> ‘Emerald Gaiety’	Emerald Gaiety Euonymus	3’ x 5’	4’o.c.	5 gallon	City of Aurora recommended xeriscape plant
<i>Euonymus kiautschovica</i> ‘Manhattan’	Manhattan Euonymus	4-6' x 6-8'	4’o.c.	5 gallon	City of Aurora recommended xeriscape plant
<i>Juniperus</i> sp.	Spreading Juniper	8"-3' x 6-10'	+/-4’o.c.	5 gallon	City of Aurora recommended xeriscape plant
<i>Mahonia aquifolium</i>	Oregon Grape Holly	4-6' x 4-6'	4’o.c.	5 gallon	Xeric-rated plant from the Garden Centers of Colorado
<i>Mahonia aquifolium</i> ‘Compacta’	Compact Oregon Grape Holly	3’ x 3’	3’o.c.	5 gallon	Xeric-rated plant from the Garden Centers of Colorado
<i>Pinus mugo</i> ‘Mops’	Miniature Mugo Pine	2-3' x 2-3'	3’o.c.	5 gallon	City of Aurora recommended xeriscape plant
<i>Pinus sylvestris</i> ‘Hillside Creeper’	Hillside Creeper	3’ x 8’	6’o.c.	5 gallon	City of Aurora recommended xeriscape plant
<i>Pyracantha angustifolia</i> ‘Gnozam’	Gnome Pyracantha	6’ x 6’	6’o.c.	5 gallon	Xeric-rated plant from the Garden Centers of Colorado
SHRUBS - LARGE (over 6’ high)					
Botanical Name	Common Name	Height X Spread	Spacing	Min. Size	Notes
<i>Acer glabrum</i>	Rocky Mountain Maple	10-20' x 10-15'	10’o.c.	5 gallon	Xeric-rated plant from the Garden Centers of Colorado
<i>Amelanchier utahensis</i>	Utah Serviceberry	6-12' x 6-12'	6’o.c.	5 gallon	City of Aurora recommended xeriscape plant
<i>Amelanchier alnifolia</i>	Saskatoon Serviceberry	10' x 8'	8’o.c.	5 gallon	City of Aurora recommended xeriscape plant
<i>Aronia arbutifolia</i> ‘Brilliantissima’	Brilliant Red Chokecherry	6-8' x 4-6'	4’o.c.	5 gallon	City of Aurora recommended xeriscape plant
<i>Aronia melanocarpa</i>	Black Chokeberry	6-8' x 4-6"	4’o.c.	5 gallon	City of Aurora recommended xeriscape plant
<i>Betula fontinalis</i>	Native River Birch	15-25' x 15-25'	15’o.c.	5 gallon	Restricted to drainage corridors or detention areas
<i>Buddleia alternifolia</i>	Alternate-Leaf Butterfly Bush	10-15' x 8-12'	6’o.c.	5 gallon	City of Aurora recommended xeriscape plant

Plant list is a sample. Additional trees/shrubs/grasses/perennials may be used in appropriate landscape areas.

<i>Buddleia davidii</i>	Butterfly Bush	6-12' x 4-8'	4'o.c.	5 gallon	City of Aurora recommended xeriscape plant
<i>Caragana arboresceus</i>	Siberian Peashrub	10-15' x 8-12'	8'o.c.	5 gallon	City of Aurora recommended xeriscape plant
<i>Cercocarpus ledifolius</i>	Mountain Mahogany, Curlleaf	10-20' x 10-20'	10'o.c.	5 gallon	City of Aurora recommended xeriscape plant
<i>Cercocarpus montanus</i>	Mountain Mahogany, Curlleaf	6-8' x 4-6'	4'o.c.	5 gallon	City of Aurora recommended xeriscape plant
<i>Cornus sericea</i>	Redtwig Dogwood	6-8' x 6-10'	6'o.c.	5 gallon	High water use plant-restrict use
<i>Cotinus coggygria</i>	Smoke Tree	8-10' x 8-10'	6'o.c.	5 gallon	Xeric-rated plant from the Garden Centers of Colorado
<i>Cotoneaster lucidus</i>	Peking Cotoneaster	6-12' x 4-6'	4'o.c.	5 gallon	City of Aurora recommended xeriscape plant
<i>Cotoneaster multiflorus</i>	Many-Flowered Cotoneaster	8-12' x 4-6'	4'o.c.	5 gallon	City of Aurora recommended xeriscape plant
<i>Euonymus alata</i>	Burning Bush	8-12' x 8-12'	6'o.c.	5 gallon	City of Aurora recommended xeriscape plant
<i>Forsythia x intermedia</i>	Forsythia	6-10' x 6-8'	6'o.c.	5 gallon	Xeric-rated plant from the Garden Centers of Colorado
<i>Hibiscus syriacus</i>	Rose of Sharon	8-10' x 6-8'	6'o.c.	5 gallon	High water use plant-restrict use
<i>Kolkwitzia amabilis</i>	Beauty Bush	10-12' x 10-12'	8'o.c.	5 gallon	City of Aurora recommended xeriscape plant
<i>Ligustrum vulgare 'Cheyenne'</i>	Cheyenne Privet	4-6' x 6-8'	5'o.c.	5 gallon	City of Aurora recommended xeriscape plant
<i>Lonicera tatarica</i>	Tatarian Honeysuckle	6-12' x 6-12'	5'o.c.	5 gallon	City of Aurora recommended xeriscape plant
<i>Prunus americana</i>	American Plum	8-12' x 6-8'	6'o.c.	5 gallon	City of Aurora recommended xeriscape plant
<i>Prunus fruticosa</i>	European Dwarf Cherry	6-8' x 6-8'	5'o.c.	5 gallon	City of Aurora recommended xeriscape plant
<i>Prunus tomentosa</i>	Nanking Cherry	8-12' x 6-10'	8'o.c.	5 gallon	City of Aurora recommended xeriscape plant
<i>Prunus virginiana metanocarpa</i>	Chokecherry	8-12' x 6-8'	6' o.c.	5 gallon	City of Aurora recommended xeriscape plant
<i>Prunus x cistena</i>	Purple Leaf Plum	6-8' x 4-6'	8' o.c.	5 gallon	City of Aurora recommended xeriscape plant
<i>Quercus gambelii</i>	Gambel Oak	8-20' x 6-12'	6'o.c.	5 gallon	City of Aurora recommended xeriscape plant
<i>Rhamnus frangula 'Columnaris'</i>	Columnar Buckthorn	8-12' x 3-4'	3' o.c.	5 gallon	City of Aurora recommended xeriscape plant
<i>Rhus glabra</i>	Smooth Sumac	8-15' x 8-10'	6'o.c.	5 gallon	City of Aurora recommended xeriscape plant
<i>Rhus typhina</i>	Saghorn Sumac	10-25' x 10-25'	6'o.c.	5 gallon	City of Aurora recommended xeriscape plant
<i>Rhus typhina 'Lacinata'</i>	Cutleaf Staghorn Sumac	6-8' x 6-8'	4'o.c.	5 gallon	City of Aurora recommended xeriscape plant
<i>Rosa woodsii</i>	Woods Rose	3-6' x 3-6'	4'o.c.	5 gallon	City of Aurora recommended xeriscape plant
<i>Rubus deliciosus</i>	Boulder Raspberry	3-6' x 3-6'	3'o.c.	5 gallon	City of Aurora recommended xeriscape plant
<i>Rubus idaeus</i>	Red Raspberry	4-6' x 3-6'	4'o.c.	5 gallon	City of Aurora recommended xeriscape plant
<i>Rubus 'Autumn Bliss'</i>	Autumn Bliss Raspberry	3-4' x 3-4'	4'o.c.	5 gallon	City of Aurora recommended xeriscape plant
<i>Rubus 'Heritage'</i>	Heritage Raspberry	5-6' x 3-4'	4' o.c.	5 gallon	City of Aurora recommended xeriscape plant
<i>Rubus 'Jewell'</i>	Jewell Black Raspberry	3-4' x 3-4'	4'o.c.	5 gallon	City of Aurora recommended xeriscape plant
<i>Rubus ursinus 'Black Satin'</i>	Black Satin Blackberry	5-6' x 3-4'	4'o.c.	5 gallon	City of Aurora recommended xeriscape plant
<i>Rubus parviflorus</i>	Thimbleberry	3-4' x 3-4'	3'o.c.	5 gallon	City of Aurora recommended xeriscape plant
<i>Salix exigua</i>	Coyote Willow	6-12' x 4-8'	6'o.c.	5 gallon	Restricted to drainage corridors or detention areas
<i>Salix purpurea pendula</i>	Blue Fountain Willow	6-8' x 8-12'	6'o.c.	5 gallon	Restricted to drainage corridors or detention areas
<i>Sambucus canadensis 'Aurea'</i>	Golden Elder	10' x 6'	8'o.c.	5 gallon	Xeric-rated plant from the Garden Centers of Colorado
<i>Sambucus pubens</i>	Native Red Berried Elder	4-12' x 6-12'	6'o.c.	5 gallon	Xeric-rated plant from the Garden Centers of Colorado
<i>Shepherdia argentea</i>	Buffaloberry	8-12' x 6-12'	6'o.c.	5 gallon	City of Aurora recommended xeriscape plant
<i>Syringa sp.</i>	Lilac	8-12' x 8-12'	6'o.c.	5 gallon	City of Aurora recommended xeriscape plant
<i>Viburnum dentatum</i>	Arrowwood Viburnum	6-8' x 6-8'	6' o.c.	5 gallon	City of Aurora recommended xeriscape plant

Plant list is a sample. Additional trees/shrubs/grasses/perennials may be used in appropriate landscape areas.

<i>Viburnum lantana</i>	Wayfaring Tree	10-15' x 6-8'	8'o.c.	5 gallon	City of Aurora recommended xeriscape plant
<i>Viburnum lentago</i>	Nannyberry Viburnum	8-15' x 6-8'	6'o.c.	5 gallon	City of Aurora recommended xeriscape plant
<i>Viburnum opulus 'Roseum'</i>	Snowball Viburnum	8-12' x 8-12'	6'o.c.	5 gallon	City of Aurora recommended xeriscape plant
<i>Viburnum trilobum</i>	Highbush Cranberry	8-12' x 6-10'	6'o.c.	5 gallon	City of Aurora recommended xeriscape plant
<i>Viburnum x burkwoodii</i>	Burkwood Viburnum	10-12' x 10-12'	6'o.c.	5 gallon	City of Aurora recommended xeriscape plant
SHRUBS - MEDIUM (4-6' high)					
Botanical Name	Common Name	Height X Spread	Spacing	Min. Size	Notes
<i>Berberis sp.</i>	Barberry	4-6' x 4-6'	3'o.c.	5 gallon	City of Aurora recommended xeriscape plant
<i>Chaenomeles speciosa</i>	Flowering Quince	4-6' x 4-8'	4'o.c.	5 gallon	Xeric-rated plant from the Garden Centers of Colorado
<i>Cornus sericea 'Isanti'</i>	Isanti Dogwood	4-6' x 4-6'	4'o.c.	5 gallon	High water use plant-restrict use
<i>Cotoneaster divaricatus</i>	Spreading Cotoneaster	4-6' x 6-8'	4'o.c.	5 gallon	City of Aurora recommended xeriscape plant
<i>Ericameria nauseosa var. speciosa</i>	Tall Blue/Green Rabbitbrush	4-6' x 4-6'	4'o.c.	5 gallon	City of Aurora recommended xeriscape plant
<i>Euonymus alata 'Compacta'</i>	Dwarf Burning Bush	4-6' x 4-6'	4'o.c.	5 gallon	City of Aurora recommended xeriscape plant
<i>Fallugia paradoxa</i>	Apache Plume	3-6' x 3-6'	4'o.c.	5 gallon	City of Aurora recommended xeriscape plant
<i>Hydrangea species</i>	Hydrangea	3-6' x 3-6'	4'o.c.	5 gallon	High water use plant-restrict use
<i>Hydrangea macrophylla 'Endless Summer'</i>	Endless Summer Hydrangea	3-5' x 3-5'	4'o.c.	5 gallon	High water use plant-restrict use
<i>Perovskia artiplicifolia</i>	Russian Sage	3-5' x 3-5'	4'o.c.	5 gallon	City of Aurora recommended xeriscape plant
<i>Philadelphus vir. 'Minnesota Snowflake'</i>	Minnesota Snowflake Mockorange	4-6' x 4-6'	4'o.c.	5 gallon	City of Aurora recommended xeriscape plant
<i>Physocarpus opulifolius 'Diablo'</i>	Diablo Ninebark	6-8' x 4-6'	5'o.c.	5 gallon	City of Aurora recommended xeriscape plant
<i>Prunus glandulosa rosea</i>	Pink Flowering Almond	4-6' x 4-6'	4'o.c.	5 gallon	City of Aurora recommended xeriscape plant
<i>Prunus tenella</i>	Dwarf Russian Almond	4-5' x 4-5'	4'o.c.	5 gallon	City of Aurora recommended xeriscape plant
<i>Rhus trilobata</i>	Three Leaf Sumac	3-6' x 3-6'	4'o.c.	5 gallon	City of Aurora recommended xeriscape plant
<i>Ribes alpinum</i>	Alpine Currant	3-6' x 3-6'	4'o.c.	5 gallon	City of Aurora recommended xeriscape plant
<i>Ribes aureum</i>	Yellow Flowering Currant	4-6' x 4-6'	4'o.c.	5 gallon	City of Aurora recommended xeriscape plant
<i>Ribes x nidigrolaria</i>	Jostaberry	3-4' x 3-4'	4'o.c.	5 gallon	City of Aurora recommended xeriscape plant
<i>Ribes sativum 'Red Lake'</i>	Red Lake Currant	4' x 3'	3'o.c.	5 gallon	City of Aurora recommended xeriscape plant
<i>Ribes uva-crispa 'Pixwell'</i>	Pixwell Gooseberry	3-4' x 3-4'	3'o.c.	5 gallon	City of Aurora recommended xeriscape plant
<i>Rosa sp.</i>	Shrub Roses	2-6' x 2-6'	4' o.c.	5 gallon	City of Aurora recommended xeriscape plant
<i>Salix irrorata</i>	Blue Stem Willow	4-12' x 4-8'	4' o.c.	5 gallon	Restricted to drainage corridors or detention areas
<i>Sorboria sorbifolia</i>	Ural False Spirea	4-6' x 6-8'	4'o.c.	5 gallon	City of Aurora recommended xeriscape plant
<i>Spirea japonica'Snowmound'</i>	Snowmound Spirea	3-5' x 3-5'	3'o.c.	5 gallon	City of Aurora recommended xeriscape plant
<i>Spirea x vanhouttei</i>	Vanhoutte Spirea	5-7' x 6-8'	6' o.c.	5 gallon	City of Aurora recommended xeriscape plant
<i>Syringa meyeri</i>	Dwarf Korean Lilac	4-6' x 4-6'	4'o.c.	5 gallon	City of Aurora recommended xeriscape plant
<i>Syringa patula 'Miss Kim'</i>	Miss Kim Lilac	3-5' x 3-5'	4'o.c.	5 gallon	City of Aurora recommended xeriscape plant
<i>Viburnum trilobum 'Compactum'</i>	American Compact Cranberrybush	4-5' x 4-5'	4'o.c.	5 gallon	City of Aurora recommended xeriscape plant
<i>Viburnum cariesii</i>	Korean Spice Viburnum	4-6' x 4-6'	4'o.c.	5 gallon	City of Aurora recommended xeriscape plant
<i>Viburnum juddii</i>	Judd Viburnum	4-6' x 4-6'	4'o.c.	5 gallon	City of Aurora recommended xeriscape plant

Plant list is a sample. Additional trees/shrubs/grasses/perennials may be used in appropriate landscape areas.

SHRUBS - LOW (under 4' high)					
Botanical Name	Common Name	Height X Spread	Spacing	Min. Size	Notes
<i>Amorpha canescens</i>	Leadplant	2-4' x 2-4'	3'o.c.	5 gallon	City of Aurora recommended xeriscape plant
<i>Berberis thunbergii</i> 'Crimson Pygmy'	Crimson Pygmy Barberry	1-2' x 1-2'	2'o.c.	5 gallon	City of Aurora recommended xeriscape plant
<i>Caryopteris clandonensis</i>	Blue Mist Spirea	3-4' x 2-4'	3.5'o.c.	5 gallon	City of Aurora recommended xeriscape plant
<i>Cornus serica</i> 'Kelseyii'	Kelsey Dogwood	2-3' x 2-3'	3'o.c.	5 gallon	High water use plant-restrict use
<i>Cotoneaster apiculatus</i>	Cranberry Cotoneaster	18-24" x 4-6'	3'o.c.	5 gallon	City of Aurora recommended xeriscape plant
<i>Daphne x burkwoodi</i> 'Carol Mackie'	Carol Mackie Daphne	3-5' x 3-5'	3'o.c.	5 gallon	City of Aurora recommended xeriscape plant
<i>Daphne x burkwoodi</i> 'Somerset'	Somerset Daphne	3-5' x 3-5'	3'o.c.	5 gallon	City of Aurora recommended xeriscape plant
<i>Ephedra viridis</i>	Mormon Tea	2-3' x 2-3'	2'o.c.	5 gallon	Xeric-rated plant from the Garden Centers of Colorado
<i>Ericameria nauseosa</i> var. <i>nauseosa</i>	Dwarf Blue Rabbitbrush	1-4' x 1-4'	3'o.c.	5 gallon	City of Aurora recommended xeriscape plant
<i>Forsythia intermedia</i> 'Arnold's Dwarf'	Arnold's Dwarf Forsythia	2-3' x 3-6'	3'o.c.	5 gallon	Xeric-rated plant from the Garden Centers of Colorado
<i>Hydrangea arborescens</i>	Annabelle Hydrangea	3-4' x 3-4'	3'o.c.	5 gallon	High water use plant-restrict use
<i>Ligustrum vulgare</i> 'Lodense'	Lodense Privet	2-3' x 3-4'	18"o.c.	5 gallon	City of Aurora recommended xeriscape plant
<i>Lonicera xylosteum</i> 'Emerald Mound'	Emerald Mound Honeysuckle	2-3' x 3-4'	3'o.c.	5 gallon	City of Aurora recommended xeriscape plant
<i>Philadelphus vir.</i> 'Dwarf Minn. Snowflake'	Dwf. Minn. Snowflake Mockorange	3-4' x 2-3'	3'o.c.	5 gallon	City of Aurora recommended xeriscape plant
<i>Potentilla</i> sp.	Cinquefoil	2-4' x 2-4'	3'o.c.	5 gallon	City of Aurora recommended xeriscape plant
<i>Prunus besseyi</i>	Western Sandcherry	3-6' x 3-5'	4'o.c.	5 gallon	City of Aurora recommended xeriscape plant
<i>Prunus besseyi</i> 'Pawnee Buttes'	Pawnee Buttes Sandcherry	2-4' x 4-6'	4'o.c.	5 gallon	City of Aurora recommended xeriscape plant
<i>Rhus aromatica</i> 'Gro-Low'	Dwarf Fragrant Sumac	2-3' x 6-8'	4'o.c.	5 gallon	City of Aurora recommended xeriscape plant
<i>Rhus glabra</i> <i>crismontana</i>	Rocky Mountain Sumac	2-3' x 2-3'	2'o.c.	5 gallon	City of Aurora recommended xeriscape plant
<i>Spirea japonica</i> 'Anthony Waterer'	Anthony Waterer Spirea	2-3' x 2-3'	3'o.c.	5 gallon	City of Aurora recommended xeriscape plant
<i>Spirea japonica</i> 'Goldflame'	Goldflame Spirea	2-3' x 2-3'	3'o.c.	5 gallon	City of Aurora recommended xeriscape plant
<i>Spirea japonica</i> 'Little Princess'	Little Princess Spirea	12-18" x 2-3'	2'o.c.	5 gallon	City of Aurora recommended xeriscape plant
<i>Spirea nipponica</i>	Snowmound Spirea	3-4' x 3-4'	4'o.c.	5 gallon	City of Aurora recommended xeriscape plant
<i>Yucca filimentosa</i>	Adam's Needle	2-3' x 3-4'	3'o.c.	5 gallon	City of Aurora recommended xeriscape plant
GROUNDCOVERS AND PERENNIALS					
Botanical Name	Common Name	Height X Spread	Spacing	Min. Size	Notes
<i>Achillea</i> sp.	Yarrow	18-24" x 2-3'	24"o.c.	1 gallon	City of Aurora recommended xeriscape plant
<i>Agastache</i> sp.	Hyssop	varies	varies	1 galon	City of Aurora recommended xeriscape plant
<i>Ajuga</i>	Carpet Bugle	4-6" x 12-24"	24"o.c.	1 gallon	City of Aurora recommended xeriscape plant
<i>Alchemilla mollis</i>	Lady's Mantle	18-24" x 18-24"	18" o.c.	1 gallon	City of Aurora recommended xeriscape plant
<i>Alyssum saxatile</i>	Basket of Gold	12-18" x 12-18"	18"o.c.	1 gallon	City of Aurora recommended xeriscape plant
<i>Anemone</i> sp.	Windflower	1-2' x 12-18"	18"o.c.	1 gallon	City of Aurora recommended xeriscape plant
<i>Anemone sylvestris</i>	Snow Drop Windflower	12-18" x 12-18"	12"o.c.	1 gallon	City of Aurora recommended xeriscape plant
<i>Aquilegia caerulea</i>	Rocky Mountain Columbine	18-24" x 12-18"	18"o.c.	1 gallon	City of Aurora recommended xeriscape plant

Plant list is a sample. Additional trees/shrubs/grasses/perennials may be used in appropriate landscape areas.

<i>Artemisia</i> sp.	Sage	varies	varies	1 gallon	City of Aurora recommended xeriscape plant
<i>Aster</i> 'Monch'	Monch Aster	24-36" x 18-24"	18"o.c.	1 gallon	City of Aurora recommended xeriscape plant
<i>Aster</i> sp.	Aster	1-3' x 12-30"	18"o.c.	1 gallon	City of Aurora recommended xeriscape plant
<i>Bergenia cordifolia</i>	Heart-Leafed Bergenia	12-18" x 18-24"	18"o.c.	1 gallon	City of Aurora recommended xeriscape plant
<i>Callirhoe involucrata</i>	Poppy Mallow	6-12" x 2-3'	24"o.c.	1 gallon	City of Aurora recommended xeriscape plant
<i>Campanula carpatica</i>	Carpathian Harebell	6-12" x 12-18"	18"o.c.	1 gallon	City of Aurora recommended xeriscape plant
<i>Campanula persicifolia</i>	Harebell/Bellflower	18-24" x 12-18"	18"o.c.	1 gallon	City of Aurora recommended xeriscape plant
<i>Campanula rotundifolia</i>	Native Bluebells	6-18" x 12-18"	18"o.c.	1 gallon	City of Aurora recommended xeriscape plant
<i>Centaurea montana</i>	Perennial Bachelor Button	12-24" x 24-36"	18"o.c.	1 gallon	City of Aurora recommended xeriscape plant
<i>Centranthus ruber</i>	Red Valerian	18-36" x 18-24"	24"o.c.	1 gallon	City of Aurora recommended xeriscape plant
<i>Ceratostigma plumbaginoides</i>	Plumbago	8-12" x 12-18"	18"o.c.	1 gallon	City of Aurora recommended xeriscape plant
<i>Coreopsis verticillata</i> 'Moonbeam'	Moonbeam Coreopsis	12-18" x 12-18"	18"o.c.	1 gallon	City of Aurora recommended xeriscape plant
<i>Cotoneaster dammeri</i> 'Coral Beauty'	Coral Beauty Cotoneaster	1-2' x 4-6'	3.5'o.c.	5 gallon	City of Aurora recommended xeriscape plant
<i>Delosperma</i> sp.	Ice Plant	varies	18"o.c.	1 gallon	City of Aurora recommended xeriscape plant
<i>Dianthus</i> sp.	Pinks	varies	18"o.c.	1 gallon	City of Aurora recommended xeriscape plant
<i>Diascia integrerrima</i> 'Coral Canyon'	Coral Canyon Twinspur	12-15" x 8-12"	12"o.c.	1 gallon	City of Aurora recommended xeriscape plant
<i>Echinacea</i> sp.	Coneflower	24-36" x 18-24"	24"o.c.	1 gallon	City of Aurora recommended xeriscape plant
<i>Epilobium canum latifolium</i>	Hummingbird Flower	18-24" x 18-24"	18"o.c.	1 gallon	City of Aurora recommended xeriscape plant
<i>Euonymus fortunei</i> 'Coloratus'	Purpleleaf Wintercreeper	18-24" x 3-4'	3'o.c.	1 gallon	City of Aurora recommended xeriscape plant
<i>Gaillardia arista</i>	Blanket Flower	18-24" x 18-24"	18"o.c.	1 gallon	City of Aurora recommended xeriscape plant
<i>Galium odoratum</i>	Sweet Woodruff	6-8" x 8-12"	18"o.c.	1 gallon	City of Aurora recommended xeriscape plant
<i>Gaura lindheimeri</i>	Whirling Butterflies	2-3' x 18-24"	24"o.c.	1 gallon	City of Aurora recommended xeriscape plant
<i>Gazania</i> sp.	Hardy Gazania	2-4' x 8-10'	10"o.c.	1 gallon	City of Aurora recommended xeriscape plant
<i>Geranium</i> sp.	Cranesbill	12-18" x 18-24"	18"o.c.	1 gallon	City of Aurora recommended xeriscape plant
<i>Geum</i> sp.	Avens	6-24" x 6-18"	12"o.c.	1 gallon	City of Aurora recommended xeriscape plant
<i>Glechoma hederacea</i>	Ground Ivy	3-6" x 18-24"	24"o.c.	1 gallon	City of Aurora recommended xeriscape plant
<i>Gypsophila</i> sp.	Baby's Breath	varies	18"o.c.	1 gallon	City of Aurora recommended xeriscape plant
<i>Helianthemum</i> sp.	Sun Rose	6-12" x 18-24"	18"o.c.	1 gallon	City of Aurora recommended xeriscape plant
<i>Heliopsis helianthoides</i>	False Sunflower	36-42" x 12-24"	24"o.c.	1 gallon	City of Aurora recommended xeriscape plant
<i>Hemerocallis</i> sp.	Daylily	12-36" x 12-36"	24"o.c.	1 gallon	City of Aurora recommended xeriscape plant
<i>Heuchera</i> sp.	Coral Bells	varies	24"o.c	1 gallon	City of Aurora recommended xeriscape plant
<i>Hosta</i> sp.	Hosta	12-24" x 12-24"	18"o.c.	1 gallon	City of Aurora recommended xeriscape plant
<i>Iberis sempervirens</i>	Candy Tuft	8-12" x 18-24"	24"o.c.	1 gallon	City of Aurora recommended xeriscape plant
<i>Iris germanica</i>	Bearded Iris	2-3' x 12-18"	18"o.c.	1 gallon	City of Aurora recommended xeriscape plant
<i>Iris pumila</i>	Dwarf Iris	8-12" x 8-12"	12"o.c.	1 gallon	Xeric-rated plant from the Garden Centers of Colorado
<i>Iris siberica</i>	Siberian Iris	3-4' x 18-24"	24"o.c.	1 gallon	Xeric-rated plant from the Garden Centers of Colorado
<i>Knifophia</i> 'Corallina'	Torch Lily	3-4' x 18-24"	18"o.c.	1 gallon	City of Aurora recommended xeriscape plant
<i>Lavandula angustifolia</i>	Lavander	12-24" x 12-18"	18"o.c.	1 gallon	City of Aurora recommended xeriscape plant
<i>Leucanthemum</i> sp.	Shasta Daisy	varies	24"o.c.	1 gallon	City of Aurora recommended xeriscape plant

Plant list is a sample. Additional trees/shrubs/grasses/perennials may be used in appropriate landscape areas.

<i>Liatris spicata</i>	Gayfeather	varies	24”o.c.	1 gallon	City of Aurora recommended xeriscape plant
<i>Linum sp.</i>	Flax	varies	18”o.c.	1 gallon	City of Aurora recommended xeriscape plant
<i>Mahonia repens</i>	Oregon Grape	12-18” x 12-18”	24”o.c.	1 gallon	City of Aurora recommended xeriscape plant
<i>Monarda sp.</i>	Bee-Balm	2-3’ x 1-3’	18”o.c.	1 gallon	City of Aurora recommended xeriscape plant
<i>Nepeta sp.</i>	Catmint	varies	18”o.c.	1 gallon	City of Aurora recommended xeriscape plant
<i>Oenothera sp.</i>	Evening Primrose	varies	24”o.c.	1 gallon	City of Aurora recommended xeriscape plant
<i>Origanum laevigatum</i> ‘Herrenhausen’	Purple Oregano	18-24” x 18-24”	18”o.c.	1 gallon	City of Aurora recommended xeriscape plant
<i>Osteospermum sp.</i>	Perennial Sun Daisy	8-12” x 10-15”	14”o.c.	1 gallon	City of Aurora recommended xeriscape plant
<i>Paeonia lactifolia</i>	Peony	24-36” x 24-36”	24”o.c.	1 gallon	City of Aurora recommended xeriscape plant
<i>Papavar orientale</i> ‘Salmon’	Salmon Oriental Poppy	24-36” x 18-24”	18”o.c.	1 gallon	City of Aurora recommended xeriscape plant
<i>Penstemon sp.</i>	Penstemon	varies	18”o.c.	1 gallon	City of Aurora recommended xeriscape plant
<i>Persicana affinis</i>	Himalayan Border Jewel	6-8” x 18-24”	18”o.c.	1 gallon	City of Aurora recommended xeriscape plant
<i>Phlox sp.</i>	Phlox	varies	18”o.c.	1 gallon	City of Aurora recommended xeriscape plant
<i>Platycodon grandiflorus</i>	Balloon Flower	12-24” x 12-18”	18”o.c.	1 gallon	City of Aurora recommended xeriscape plant
<i>Rosmarinus officinalis</i> ‘Arp’	Lemon Rosemary	2-4’ x 2-3’	2’o.c.	1 gallon	City of Aurora recommended xeriscape plant
<i>Rudbeckia sp.</i>	Black-Eyed Susan	varies	24”o.c.	1 gallon	City of Aurora recommended xeriscape plant
<i>Salvia officinalis</i>	Garden Sage	18-24” x 18-24”	24”o.c.	1 gallon	City of Aurora recommended xeriscape plant
<i>Salvia sp.</i>	Salvia varieties	18-24” x 12-18”	24”o.c.	1 gallon	City of Aurora recommended xeriscape plant
<i>Santolina sp.</i>	Lavender Cotton	12-18” x 12-18”	18”o.c.	1 gallon	City of Aurora recommended xeriscape plant
<i>Saponaria sp.</i>	Soapwort	varies	18”o.c.	1 gallon	City of Aurora recommended xeriscape plant
<i>Sedum sp.</i>	Stonecrop	varies	24”o.c.	1 gallon	City of Aurora recommended xeriscape plant
<i>Stachys byzantina</i> ‘Silver Carpet’	Flowerless Lamb’s Ear	12-18” x 12-18”	18”o.c.	1 gallon	City of Aurora recommended xeriscape plant
<i>Thymus sp.</i>	Thyme	1/2-4” x 12-24”	18”o.c.	1 gallon	City of Aurora recommended xeriscape plant
<i>Veronica sp.</i>	Speedwell	varies	18”o.c.	1 gallon	City of Aurora recommended xeriscape plant
<i>Vinca minor</i> ‘Bowlesii’	Bowles Periwinkle	4-6” x 12-18”	24”o.c.	1 gallon	City of Aurora recommended xeriscape plant
ORNAMENTAL GRASSES					
Botanical Name	Common Name	Height X Spread	Spacing	Min. Size	Notes
<i>Andropogon gerardii</i>	Big Bluestem Grass	5-6’ x 2-3’	3’o.c.	1 gallon	City of Aurora recommended xeriscape plant
<i>Calamagrostis sp.</i>	Feather Reed Grass	3-4’ x 2-3’	2-3’o.c.	1 gallon	City of Aurora recommended xeriscape plant
<i>Chasmanthium latifolium</i>	Northern Sea Oats	2-3’ x 18-24”	18”o.c.	1 gallon	City of Aurora recommended xeriscape plant
<i>Deschampsia caespitosa</i>	Tufted Hair Grass	2-3’ x 18-24”	24”o.c.	1 gallon	City of Aurora recommended xeriscape plant
<i>Festuca sp.</i>	Fescue Grass	4-10” x 6-10”	8-12”o.c.	1 gallon	City of Aurora recommended xeriscape plant
<i>Helictotrichon sempervirens</i>	Blue Avena Grass	2-3’ x 18-24”	24”o.c.	1 gallon	City of Aurora recommended xeriscape plant
<i>Miscanthus sinensis</i>	Maiden Grass	varies	varies	1 gallon	City of Aurora recommended xeriscape plant
<i>Panicum virgatum</i>	Switch Grass	3-5’ x 16-20”	18”o.c.	1 gallon	City of Aurora recommended xeriscape plant
<i>Pennisetum setaceum</i> (hardy varieties)	Hardy Fountain Grass	varies	varies	1 gallon	City of Aurora recommended xeriscape plant
<i>Saccharum ravennae</i>	Plume Grass	10-15’ x 5-6’	5’o.c.	1 gallon	Xeric-rated plant from the Garden Centers of Colorado

Plant list is a sample. Additional trees/shrubs/grasses/perennials may be used in appropriate landscape areas.

<i>Schizachyrium scoparium</i>	Little Bluestem	2-3' x 18-24"	18"o.c.	1 gallon	City of Aurora recommended xeriscape plant
<i>Sorghastrum nutans</i>	Blue Indian Grass	5-6' x 2-3'	24"o.c.	1 gallon	City of Aurora recommended xeriscape plant
VINES AND CLIMBERS					
Botanical Name	Common Name	Height X Spread	Spacing	Min. Size	Notes
<i>Campsis radicans</i>	Trumpet Vine	25-50'	as desired	1 gallon	City of Aurora recommended xeriscape plant
<i>Clematis sp.</i>	Clematis	6-10'	as desired	1 gallon	City of Aurora recommended xeriscape plant
<i>Humulus lupulus neomexicana</i>	Native Hop Vine	10-15'	as desired	1 gallon	Xeric-rated plant from the Garden Centers of Colorado
<i>Lonicera japonica 'Halliana'</i>	Hall's Honeysuckle	15-25'	as desired	1 gallon	City of Aurora recommended xeriscape plant
<i>Parthenocissus tricuspidata</i>	Boston Ivy	30-50'	as desired	1 gallon	Xeric-rated plant from the Garden Centers of Colorado
<i>Rosa sp.</i>	Climbing Rose	8-20'	as desired	1 gallon	City of Aurora recommended xeriscape plant
<i>Vitis sp.</i>	Grape	30-50'	as desired	1 gallon	Xeric-rated plant from the Garden Centers of Colorado
<i>Vitis labrusca 'Eastern Concord'</i>	Concord Grape	20-25' x 3-4'	3'o.c.	1 gallon	Xeric-rated plant from the Garden Centers of Colorado
<i>Vitis labrusca 'Himrod'</i>	Himrod White Grape	20-25' x 3-4'	3'o.c.	1 gallon	Xeric-rated plant from the Garden Centers of Colorado
<i>Vitis labrusca 'Niagara'</i>	Niagara White Grape	20-25' x 3-4'	3'o.c.	1 gallon	Xeric-rated plant from the Garden Centers of Colorado
<i>Wisteria sinensis</i>	Wisteria	20-30'	as desired	1 gallon	Xeric-rated plant from the Garden Centers of Colorado
SPECIAL PLANTED TREE LAWN					
Botanical Name	Common Name	Height X Spread	Spacing	Min. Size	Notes
TREES					
<i>Acer ginnala</i>	Amur Maple	15-20' x 15-20'	NA	2" Caliper	City of Aurora recommended xeriscape plant
<i>Acer tataricun</i>	Tatarian Maple	20-25' x 15-20'	NA	6'-8' Clump	City of Aurora recommended xeriscape plant
<i>Amelanchier canadensis</i>	Shadblow Serviceberry	15-25' x 15-20'	NA	6'-8' Clump	City of Aurora recommended xeriscape plant
<i>Amelanchier grand. 'Autumn Brilliant'</i>	Autun Brilliant Serviceberry	15-25' x 15-20'	NA	6'-8' Clump	City of Aurora recommended xeriscape plant
<i>Crataegus sp.</i>	Hawthorn	15-30' x 15-30'	NA	6'-8' Clump	City of Aurora recommended xeriscape plant
<i>Malus sp.</i>	Crabapple	15-25' x 15-25'	NA	2" Caliper	City of Aurora recommended xeriscape plant
LOW SHRUBS (under 4' high)					
<i>Ericameria nauseosa var. nauseosa</i>	Dwarf Blue Rabbitbrush	1-4' x 1-4'	3'o.c.	5 gallon	Xeric-rated plant from the Garden Centers of Colorado
<i>Juniperus sp.</i>	Spreading Juniper	8"-3' x 6-10'	4'o.c.	5 gallon	City of Aurora recommended xeriscape plant
<i>Prunus besseyi 'Pawnee Buttes'</i>	Pawnee Butte Sandcherry	2-4' x 4-6'	4'o.c.	5 gallon	City of Aurora recommended xeriscape plant
<i>Rhus aromatica 'Gro-low'</i>	Dwarf Fragrant Sumac	2-3' x 6-8'	4'o.c.	5 gallon	City of Aurora recommended xeriscape plant
GRASSES					
<i>Deschampsia caespitosa</i>	Tufted Hair Grass	2-3' x 18-24"	24"o.c.	1 gallon	City of Aurora recommended xeriscape plant
<i>Helictotrichon sempervirens</i>	Blue Avena Grass	2-3' x 18-24"	24"o.c.	1 gallon	City of Aurora recommended xeriscape plant
<i>Pennisetum setaceum (hardy varieties)</i>	Hardy Fountain Grass	varies	varies	1 gallon	City of Aurora recommended xeriscape plant

Plant list is a sample. Additional trees/shrubs/grasses/perennials may be used in appropriate landscape areas.

GROUNDCOVERS AND PERENNIALS					
<i>Achillea 'Moonshine'</i>	Moonshine Yarrow	18-24" x 2-3'	24"o.c.	1 gallon	City of Aurora recommended xeriscape plant
<i>Agastache sp.</i>	Hyssop	varies	varies	1 galon	City of Aurora recommended xeriscape plant
<i>Artemisia sp.</i>	Sage	varies	varies	1 gallon	City of Aurora recommended xeriscape plant
<i>Aster nova-belgii 'Audrey'</i>	Dwarf Blue Fall Aster	18-24" x 18-24"	18"o.c.	1 gallon	City of Aurora recommended xeriscape plant
<i>Callirhoe involucrata</i>	Poppy Mallow	6-12" x 2-3'	24"o.c.	1 gallon	City of Aurora recommended xeriscape plant
<i>Centranthus ruber</i>	Red Valerian	18-36" x 18-24"	24"o.c.	1 gallon	City of Aurora recommended xeriscape plant
<i>Coreopsis verticullata 'Moonbeam'</i>	Moonbeam Coreopsis	12-18" x 12-18"	18"o.c.	1 gallon	City of Aurora recommended xeriscape plant
<i>Echinacea sp.</i>	Coneflower	24-36" x 18-24"	24"o.c.	1 gallon	City of Aurora recommended xeriscape plant
<i>Epilobium canum latifolium</i>	Hummingbird Flower	18-24" x 18-24"	18"o.c.	1 gallon	City of Aurora recommended xeriscape plant
<i>Gaillardia arista</i>	Blanket Flower	18-24" x 18-24"	18"o.c.	1 gallon	City of Aurora recommended xeriscape plant
<i>Hemerocallis sp.</i>	Daylily	12-36" x 12-36"	24"o.c.	1 gallon	City of Aurora recommended xeriscape plant
<i>Iris siberica</i>	Siberian Iris	3-4' x 18-24"	24"o.c.	1 gallon	Xeric-rated plant from the Garden Centers of Colorado
<i>Liatris spicata</i>	Gayfeather	varies	24"o.c.	1 gallon	City of Aurora recommended xeriscape plant
<i>Linum perenne</i>	Blue Flax	1-2' x 12-18"	12"o.c.	1 gallon	City of Aurora recommended xeriscape plant
<i>Narcissus sp.</i>	Daffodil	12-18" x 12-18"	12"o.c.	1 gallon	Xeric-rated plant from the Garden Centers of Colorado
<i>Penstemon sp.</i>	Penstemon	varies	18"o.c.	1 gallon	City of Aurora recommended xeriscape plant
<i>Rudbeckia sp.</i>	Black-Eyed Susan	varies	24"o.c.	1 gallon	City of Aurora recommended xeriscape plant
<i>Salvia sp.</i>	Blue Salvia	18-24" x 12-18"	24"o.c.	1 gallon	City of Aurora recommended xeriscape plant
<i>Saponaria sp.</i>	Soapwort	varies	18"o.c.	1 gallon	City of Aurora recommended xeriscape plant
<i>Sedum sp.</i>	Stonecrop	varies	24"o.c.	1 gallon	City of Aurora recommended xeriscape plant
<i>Veronica sp.</i>	Speedwell	varies	18"o.c.	1 gallon	City of Aurora recommended xeriscape plant

Plant list is a sample. Additional trees/shrubs/grasses/perennials may be used in appropriate landscape areas.