

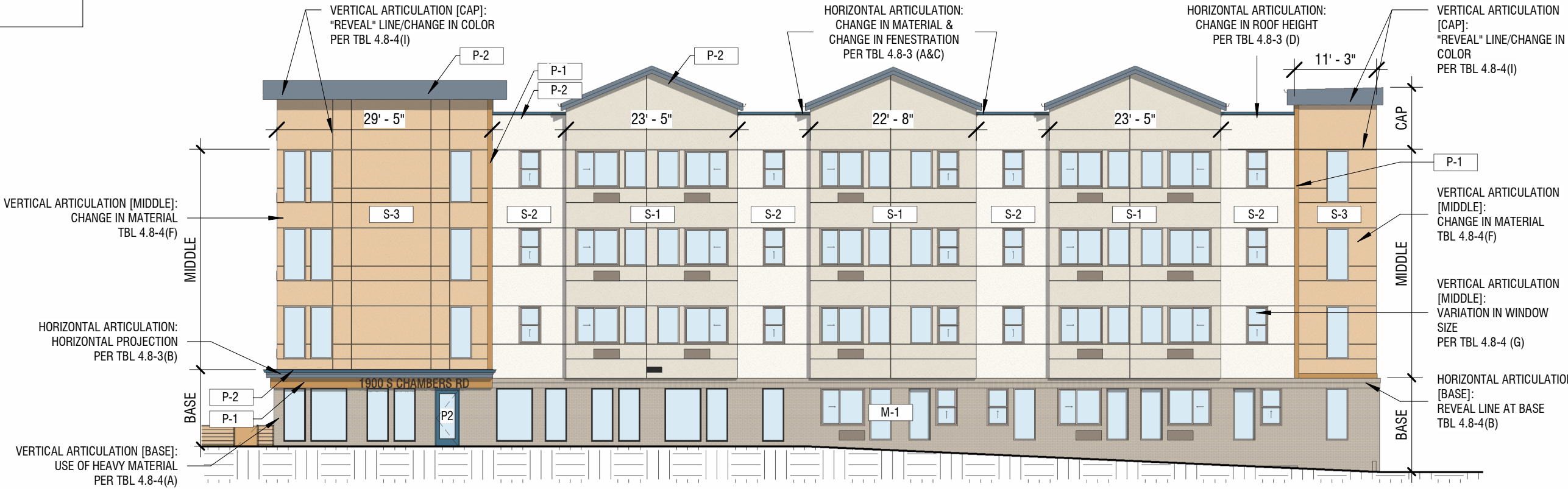
MATERIAL LEGEND

| | |
|-----|---|
| S-1 | MATERIAL : STUCCO SW 7562 'ROMAN COLUMN' |
| S-2 | MATERIAL : STUCCO SW 6148 'WOOL SKEIN' |
| S-3 | MATERIAL : STUCCO SW 6381 'ANJOU PEAR' |
| M-1 | MATERIAL : BRICK MASONRY SUMMIT TWILIGHT GRAIN |
| C-1 | MATERIAL : CONCRETE |
| P-1 | MATERIAL : PAINT SW 6250 'GRANITE PEAK' |
| P-2 | MATERIAL : PAINT SW 6384 'CUT THE MUSTARD' |
| P-3 | MATERIAL : PAINT SW 9117 'URBAN JUNGLE' |

*ALL MATERIAL SELECTIONS TO MATCH THE ABOVE, OR APPROVED EQUAL



2 NORTH ELEVATION
1/16" = 1'-0"

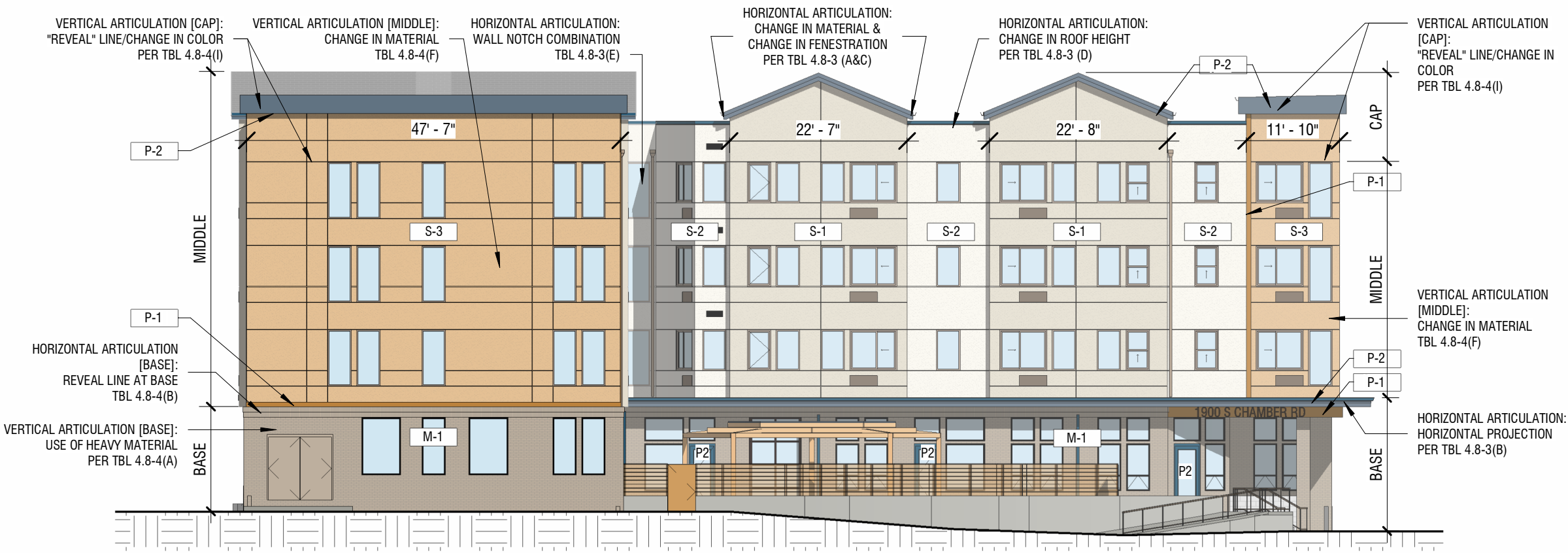


1 WEST ELEVATION
1/16" = 1'-0"

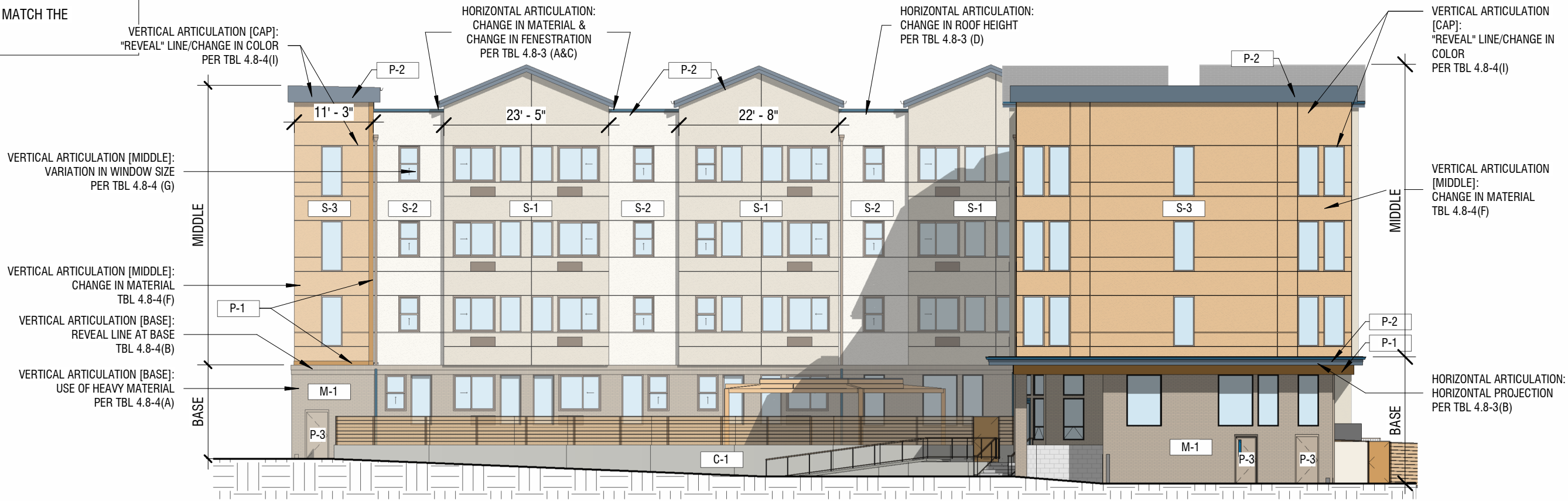
MATERIAL LEGEND

| | |
|-----|---|
| S-1 | MATERIAL : STUCCO SW 7562 'ROMAN COLUMN' |
| S-2 | MATERIAL : STUCCO SW 6148 'WOOL SKEIN' |
| S-3 | MATERIAL : STUCCO SW 6381 'ANJOU PEAR' |
| M-1 | MATERIAL : BRICK MASONRY SUMMIT TWILIGHT GRAIN |
| C-1 | MATERIAL : CONCRETE |
| P-1 | MATERIAL : PAINT SW 6250 'GRANITE PEAK' |
| P-2 | MATERIAL : PAINT SW 6384 'CUT THE MUSTARD' |
| P-3 | MATERIAL : PAINT SW 9117 'URBAN JUNGLE' |

*ALL MATERIAL SELECTIONS TO MATCH THE ABOVE, OR APPROVED EQUAL



2 SOUTH ELEVATION
1/16" = 1'-0"

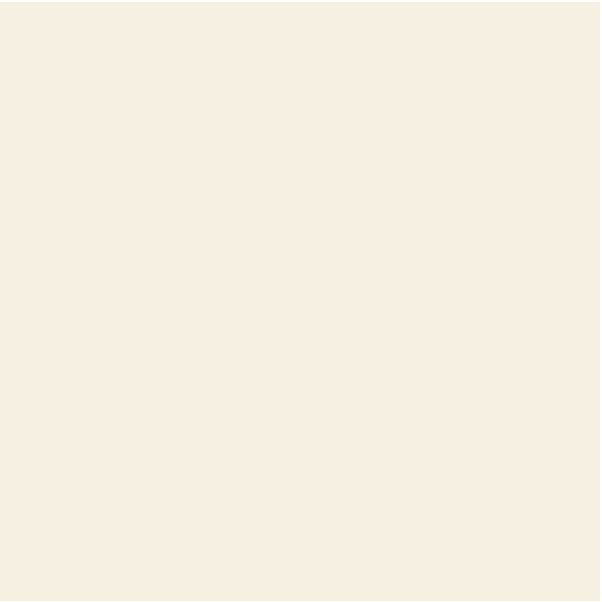


1 EAST ELEVATION
1/16" = 1'-0"

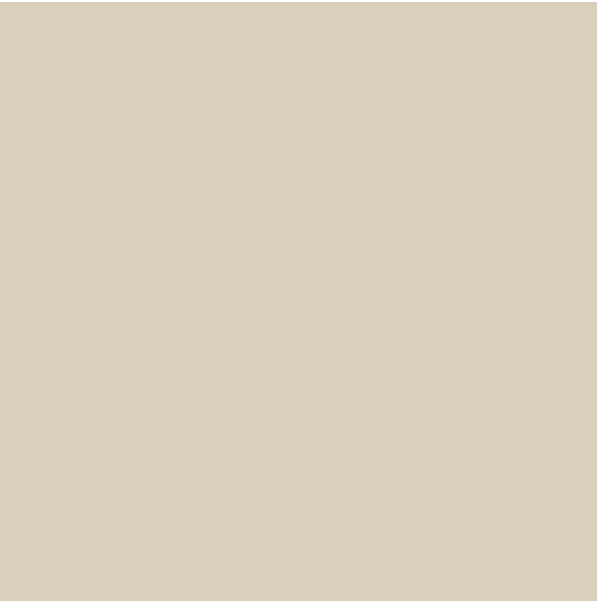
MATERIAL LEGEND

| | |
|-----|---|
| S-1 | MATERIAL : STUCCO SW 7562 'ROMAN COLUMN' |
| S-2 | MATERIAL : STUCCO SW 6148 'WOOL SKEIN' |
| S-3 | MATERIAL : STUCCO SW 6381 'ANJOU PEAR' |
| M-1 | MATERIAL : BRICK MASONRY SUMMIT TWILIGHT GRAIN |
| C-1 | MATERIAL : CONCRETE |
| P-1 | MATERIAL : PAINT SW 6250 ' GRANITE PEAK' |
| P-2 | MATERIAL : PAINT SW 6384 'CUT THE MUSTARD' |
| P-3 | MATERIAL : PAINT SW 9117 'URBAN JUNGLE' |

*ALL MATERIAL SELECTIONS TO MATCH THE ABOVE, OR APPROVED EQUAL



STUCCO : S-1



STUCCO : S-2



STUCCO : S-3



BRICK MASONRY : M-1



PAINT : P-1



PAINT : P-2



PAINT : P-3



1

SOUTHEAST COURTYARD PERSPECTIVE



1

NORTHWEST PERSPECTIVE



1

NORTHEAST PERSPECTIVE