

**LOCATED IN THE EAST 1/2 SECTION 18, TOWNSHIP 4 SOUTH, RANGE 65 WEST OF THE 6TH P.M.,  
CITY OF AURORA, COUNTY OF ARAPAHOE, STATE OF COLORADO**

KNOWN ALL PEOPLE BY THESE PRESENTS THAT THE UNDERSIGNED WARRANT THEY ARE THE OWNER OF A PARCEL OF LAND SITUATED IN THE EAST HALF OF SECTION 18, TOWNSHIP 4 SOUTH, RANGE 65 WEST OF THE SIXTH PRINCIPAL MERIDIAN: CITY OF AURORA, COUNTY OF ARAPAHOE, STATE OF COLORADO, BEING MORE PARTICULARLY DESCRIBED AS FOLLOWS:

THENCE ALONG THE EAST LINE OF THE SAID SOUTH HALF OF THE NORTHEAST QUARTER OF SECTION 18, S 00°12'27" E, A DISTANCE OF 1325.70 FEET TO SAID EAST QUARTER CORNER OF SECTION 18:

THENCE N 36°29'11" W, A DISTANCE OF 84.53 FEET;  
THENCE N 58°15'00" W, A DISTANCE OF 480.00 FEET;  
THENCE N 73°00'00" W, DISTANCE OF 195.00 FEET;  
THENCE N 79°00'00" W, A DISTANCE OF 220.00 FEET;  
THENCE N 69°15'00" W, A DISTANCE OF 360.00 FEET;  
THENCE N 74°45'00" W, A DISTANCE OF 225.00 FEET;  
THENCE S 70°00'00" W, A DISTANCE OF 30.00 FEET;  
THENCE N 82°00'00" W, A DISTANCE OF 495.00 FEET TO A POINT ON A CURVE:

THENCE N 87°00'00" W, A DISTANCE OF 190.00 FEET TO THE WEST LINE OF SAID SOUTH HALF OF THE NORTHEAST QUARTER OF SECTION 18;

THENCE ALONG THE NORTH LINE OF SAID SOUTH HALF OF NORTHEAST QUARTER OF SECTION 18, N 89°41'33" E, A DISTANCE OF 2654.68 FEET TO THE POINT OF BEGINNING.

RICHMOND AMERICAN HOMES OF COLORADO, INC., A DELAWARE CORPORATION

BY: \_\_\_\_\_

NAME: \_\_\_\_\_

TITLE: \_\_\_\_\_

STATE OF COLORADO  
COUNTY OF \_\_\_\_\_

THE FOREGOING INSTRUMENT WAS ACKNOWLEDGED BEFORE ME THIS \_\_\_\_ DAY OF \_\_\_\_\_, A.D. 20\_\_\_\_, BY \_\_\_\_\_ AS \_\_\_\_\_ OF \_\_\_\_\_.

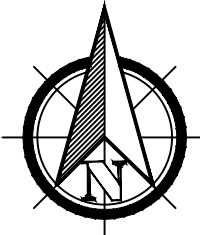
WITNESS MY HAND AND OFFICIAL SEAL,

NOTARY PUBLIC

MY COMMISSION EXPIRES: \_\_\_\_\_

ALL CROSSINGS OR ENCROACHMENTS, INCLUDING BUT NOT LIMITED TO, PRIVATE LANDSCAPE IRRIGATION SYSTEMS, UNDERDRAINS, OR PRIVATE UTILITIES INTO EASEMENTS OWNED BY THE CITY OF AURORA ARE ACKNOWLEDGED BY THE UNDERSIGNED AS BEING SUBJECT TO THE CITY OF AURORA'S USE AND OCCUPANCY OF SAID EASEMENTS AND RIGHTS-OF-WAY. THE UNDERSIGNED, THEIR SUCCESSORS AND ASSIGNS, HEREBY AGREE TO INDEMNIFY AND HOLD HARMLESS THE CITY OF AURORA FOR ANY LOSS, DAMAGE, OR REPAIR TO PRIVATE LANDSCAPE IRRIGATION SYSTEMS, UNDERDRAINS, OR PRIVATE UTILITIES THAT MAY RESULT FROM THE CITY OF AURORA'S USE AND OCCUPANCY OF SAID EASEMENTS AND RIGHTS-OF-WAY. THE UNDERSIGNED, ITS SUCCESSORS AND ASSIGNS, FURTHER AGREES TO REMOVE, REPAIR, REPLACE, RELOCATE, MODIFY, OR OTHERWISE ADJUST SAID PRIVATE LANDSCAPE IRRIGATION SYSTEMS, UNDERDRAINS, PRIVATE DETENTION POND AND DRAINAGE FEATURES, OR PRIVATE UTILITIES UPON REQUEST FROM THE CITY OF AURORA AND AT NO EXPENSE TO THE CITY OF AURORA.

LAND USE SUMMARY CHART				
TYPE	LOTS	SQ. FT.	ACRES	%
LOT AREA - RESIDENTIAL	163	1,016,527	23.336	37.9%
PUBLIC RIGHT-OF-WAY AREA		548,926	12.602	20.5%
TRACTS - {13}		1,114,025	25.574	41.6%
TOTALS		2,679,478	61.512	100%



### VICINITY MAP

SCALE: 1" = 1000

- NOTICE: ACCORDING TO COLORADO LAW YOU MUST COMMENCE ANY LEGAL ACTION BASED UPON ANY DEFECT IN THIS SURVEY WITHIN THREE YEARS AFTER YOU FIRST DISCOVER SUCH DEFECT. IN NO EVENT MAY ANY ACTION BASED UPON ANY DEFECT IN THIS SURVEY BE COMMENCED MORE THAN TEN YEARS FROM THE DATE OF THE CERTIFICATION SHOWN HEREON.
2. ANY PERSON WHO KNOWINGLY REMOVES, ALTERS OR DEFEACES ANY PUBLIC LAND SURVEY MONUMENT OR LAND BOUNDARY MONUMENT OR ACCESSORY, COMMITS A CLASS TWO (2) MISDEMEANOR PURSUANT TO STATE STATUTE 18-4-508, C.R.S.
3. THIS SURVEY DOES NOT CONSTITUTE A TITLE SEARCH BY LIA SURVEYING TO DETERMINE OWNERSHIP OR EASEMENTS OF RECORD. FOR ALL INFORMATION REGARDING EASEMENTS, RIGHTS-OF-WAY, AND TITLE OF RECORD, LIA SURVEYING RELIED UPON THE TITLE COMMITMENT PREPARED BY LAND TITLE GUARANTEE COMPANY, ORDER NUMBER AB22507086-2 WITH A EFFECTIVE DATE OF AUGUST 10, 2023 AT 5:00 P.M.
4. THE LINEAL UNIT USED IN THE PREPARATION OF THIS SURVEY IS THE U.S. SURVEY FOOT AS DEFINED BY THE UNITED STATES DEPARTMENT OF COMMERCE, NATIONAL INSTITUTE OF STANDARDS AND TECHNOLOGY.
5. BASIS OF BEARINGS: THE EAST LINE OF THE SOUTH HALF OF THE NORTHEAST QUARTER OF SECTION 18, TOWNSHIP 4 SOUTH, RANGE 65 WEST OF THE SIXTH PRINCIPAL MERIDIAN IS ASSUMED TO BEAR SOUTH 00°12'27" EAST. SAID LINE BEING MONUMENTED ON THE NORTH BY THE NORTH SIXTEENTH-SECTION CORNER OF SAID SECTION 18 BEING A 3.25" ALUMINUM CAP STAMPED "T45 R65W N1/16 S18/S17 2006 PLS 28668" AND ON THE SOUTH BY THE EAST QUARTER-SECTION CORNER BEING A 3.25" ALUMINUM CAP STAMPED "CITY OF AURORA T45 R65W 1/4 S18/S17 2005 PLS 23527" WITH ALL BEARINGS CONTAINED HEREIN RELATIVE THERETO.
6. NONEXCLUSIVE TRAIL EASEMENTS ARE HEREBY GRANTED TO THE CITY OF AURORA FOR THE PURPOSE OF MAINTAINING, RECONSTRUCTING, AND USING SUCH TRAILS TOGETHER WITH THE RIGHT OF INGRESS AND EGRESS, PROVIDED THE CITY SHALL NOT INTERFERE WITH ANY OTHER STRUCTURES OR IMPROVEMENTS.
7. ALL OWNERS OF LOTS OR TRACTS ADJACENT TO (INSERT NAMES OF ANY ARTERIAL, COLLECTOR, AND CONTINUOUS TYPE 1 LOCAL STREETS HERE) SHALL BE REQUIRED TO COMPLY WITH REQUIREMENTS OF THE AURORA CITY CODE RESTRICTING THE ABILITY TO BUILD A FENCE ALONG THOSE STREETS OR THE TYPES AND SIZES OF FENCES THAT CAN BE BUILT ALONG THOSE STREET.
8. RIGHT-OF-WAY FOR INGRESS AND EGRESS FOR SERVICE AND EMERGENCY VEHICLES IS GRANTED OVER, ACROSS, ON, AND THROUGH ANY AND ALL PRIVATE ROADS, WAYS, AND FIRE LANES NOW OR HEREAFTER ESTABLISHED ON THE DESCRIBED PROPERTY. THE SAME ARE HEREBY DESIGNATED AS FIRE LANES AND EMERGENCY AND SERVICE VEHICLE ROADS AND SHALL BE POSTED "NO PARKING FIRE LANE".
9. THE EASEMENT AREA WITHIN EACH LOT OR TRACT IS TO BE CONTINUOUSLY MAINTAINED BY THE OWNER OF THE LOT OR TRACT EXCEPTING THE CITY OF AURORA FROM SUCH RESPONSIBILITY. ANY STRUCTURES INCONSISTENT WITH THE USE GRANTED IN THE EASEMENT ARE PROHIBITED.
10. THE CORRIDOR AREA WITHIN EACH LOT IS TO BE CONTINUOUSLY MAINTAINED BY THE CITY OF AURORA. ANY STRUCTURE INCONSISTENT WITH THE DESIGNATED USE OF THE CORRIDOR IS PROHIBITED.
11. TRACT A IS GRANTED TO THE CITY OF AURORA FOR PUBLIC LAND PURPOSES AND WILL BE CONSTRUCTED BY THE DEVELOPER TO CITY OF AURORA SPECIFICATIONS. TRACT B IS GRANTED TO THE CITY OF AURORA FOR UTILITY AND DRAINAGE PURPOSES AND WILL BE CONSTRUCTED BY THE DEVELOPER TO CITY OF AURORA SPECIFICATIONS. TRACT C IS GRANTED TO THE CITY OF AURORA FOR PUBLIC LAND PURPOSES AND WILL BE CONSTRUCTED BY THE DEVELOPER TO CITY OF AURORA SPECIFICATIONS. TRACT D IS GRANTED TO THE CITY OF AURORA FOR LANDSCAPE & IRRIGATION PURPOSES AND WILL BE CONSTRUCTED BY THE DEVELOPER TO CITY OF AURORA SPECIFICATIONS. TRACT E IS GRANTED TO THE CITY OF AURORA FOR UTILITY AND DRAINAGE PURPOSES AND WILL BE CONSTRUCTED BY THE DEVELOPER TO CITY OF AURORA SPECIFICATIONS. TRACT F IS GRANTED TO THE CITY OF AURORA FOR LANDSCAPE & IRRIGATION PURPOSES AND WILL BE CONSTRUCTED BY THE DEVELOPER TO CITY OF AURORA SPECIFICATIONS. TRACT G IS GRANTED TO THE CITY OF AURORA FOR UTILITY AND DRAINAGE PURPOSES AND WILL BE CONSTRUCTED BY THE DEVELOPER TO CITY OF AURORA SPECIFICATIONS. TRACT H IS GRANTED TO THE CITY OF AURORA FOR UTILITY AND DRAINAGE PURPOSES AND WILL BE CONSTRUCTED BY THE DEVELOPER TO CITY OF AURORA SPECIFICATIONS. TRACT I IS GRANTED TO THE CITY OF AURORA FOR PUBLIC LAND PURPOSES AND WILL BE CONSTRUCTED BY THE DEVELOPER TO CITY OF AURORA SPECIFICATIONS. TRACT J IS GRANTED TO THE CITY OF AURORA FOR UTILITY AND DRAINAGE PURPOSES AND WILL BE CONSTRUCTED BY THE DEVELOPER TO CITY OF AURORA SPECIFICATIONS. TRACT K IS GRANTED TO THE CITY OF AURORA FOR UTILITY AND DRAINAGE PURPOSES AND WILL BE CONSTRUCTED BY THE DEVELOPER TO CITY OF AURORA SPECIFICATIONS. TRACT L IS GRANTED TO THE CITY OF AURORA FOR UTILITY AND DRAINAGE PURPOSES AND WILL BE CONSTRUCTED BY THE DEVELOPER TO CITY OF AURORA SPECIFICATIONS. TRACT M IS GRANTED TO THE CITY OF AURORA FOR UTILITY AND DRAINAGE PURPOSES AND WILL BE CONSTRUCTED BY THE DEVELOPER TO CITY OF AURORA SPECIFICATIONS.
12. TRACTS A - M ARE TO BE PRIVATELY OWNED AND MAINTAINED.

THE FOREGOING INSTRUMENT IS APPROVED FOR FILING AND CONVEYANCE OF STREETS AND EASEMENTS AS SHOWN HEREON AND IS ACCEPTED BY THE CITY OF AURORA, COLORADO, THIS \_\_\_\_\_ DAY OF \_\_\_\_\_, 20\_\_\_\_ A.D., SUBJECT TO THE CONDITION THAT THE CITY SHALL UNDERTAKE THE MAINTENANCE OF ANY SUCH STREETS ONLY AFTER CONSTRUCTION AS BEEN COMPLETED BY THE SUBDIVIDER TO CITY OF AURORA SPECIFICATIONS.

CITY ENGINEER

DATE \_\_\_\_\_

PLANNING DIRECTOR

DATE \_\_\_\_\_

I HEREBY CERTIFY I WAS IN RESPONSIBLE CHARGE OF THE SURVEY WORK USED IN THE PREPARATION OF THIS PLAT; THE POSITIONS OF THE PLATTED POINTS SHOWN HEREON HAVE AN ACCURACY OF NOT LESS THAN ONE (1) FOOT IN TEN THOUSAND (10,000) FEET PRIOR TO ADJUSTMENTS; AND ALL BOUNDARY MONUMENTS AND CONTROL CORNERS SHOWN HEREON WERE IN PLACE AS DESCRIBED ON JUNE 20, 2023.

I FURTHER CERTIFY THAT THE INFORMATION CONTAINED HEREIN IS ACCURATE AND IN ACCORDANCE WITH APPLICABLE STANDARDS OF PRACTICE TO MY KNOWLEDGE, INFORMATION, AND BELIEF. THIS CERTIFICATION IS NOT A GUARANTY OR WARRANTY, EITHER EXPRESSED OR IMPLIED.

I ATTEST THE ABOVE ON THIS \_\_\_\_\_ DAY OF \_\_\_\_\_, 20\_\_\_\_

MARK A. HALL  
COLORADO PLS NO. 36073  
FOR AND ON BEHALF OF LJA SURVEYING, INC.  
7800 E UNION AVE, SUITE 575,  
DENVER, COLORADO 80237

# LJA SURVEYING

7800 E. Union Avenue  
Suite 575  
Denver, CO 80237  
303-930-8510 • [www.ija.com](http://www.ija.com)

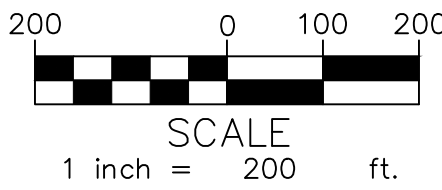
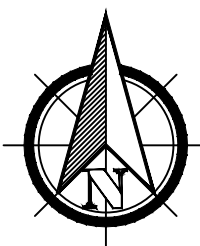
Date: 4/30/2025	Job No.: 1023-0004	Sheet: 1 of 5
-----------------	--------------------	---------------

# WATERSTONE SUBDIVISION FILING NO. 4

LOCATED IN THE EAST 1/2 SECTION 18, TOWNSHIP 4 SOUTH, RANGE 65 WEST OF THE 6TH P.M.,  
CITY OF AURORA, COUNTY OF ARAPAHOE, STATE OF COLORADO

## MONUMENT SYMBOL LEGEND

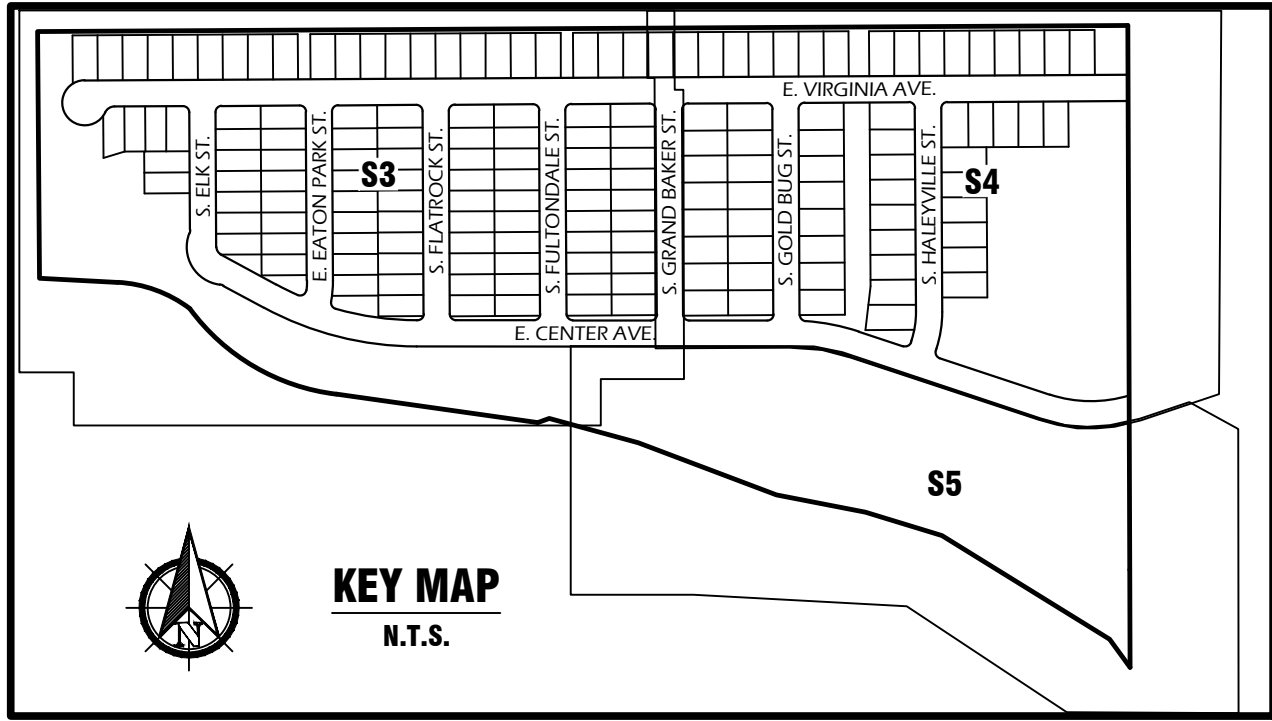
- ◆ RECOVERED SECTION CORNER AS NOTED HEREON
- RECOVERED NO. 5 REBAR WITH 1-1/4" ORANGE PLASTIC CAP STAMPED "PLS 35585"
- SET 18" LONG NO. 5 REBAR WITH 1-1/4" BLUE PLASTIC CAP STAMPED "LJA PLS 36073" FLUSH WITH GROUND
- (R1) RECORDED DIMENSION PER SPECIAL WARRANTY DEED, REC. NO. 20220035689



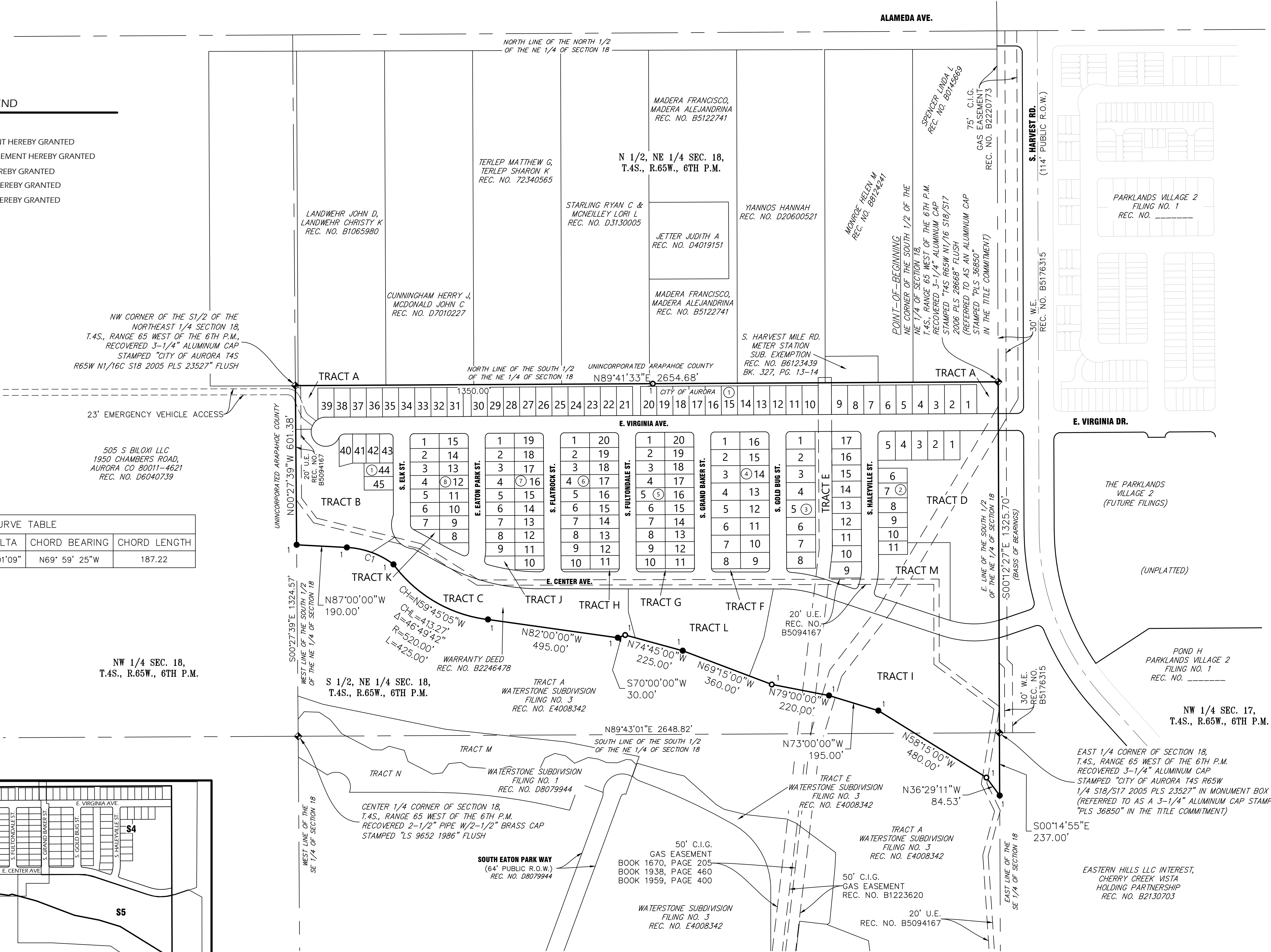
## LEGEND

- # = BLOCK NUMBER
- D.E. = DRAINAGE EASEMENT HEREBY GRANTED
- SD.E. = SIGHT DISTANCE EASEMENT HEREBY GRANTED
- T.E. = TRAIL EASEMENT HEREBY GRANTED
- U.E. = UTILITY EASEMENT HEREBY GRANTED
- STM.E. = STORM EASEMENT HEREBY GRANTED
- REC. NO. = RECEPTION NUMBER
- BK., PG. = BOOK & PAGE

CURVE TABLE					
CURVE	LENGTH	RADIUS	DELTA	CHORD BEARING	CHORD LENGTH
C1	190.00'	320.00'	34°01'09"	N69° 59' 25"W	187.22



KEY MAP  
N.T.S.



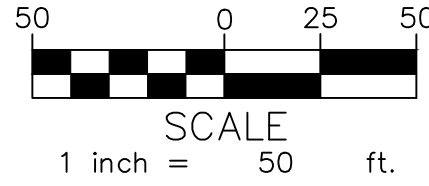
LJA SURVEYING

7800 E Union Avenue  
Suite 575  
Denver, CO 80237  
303-950-8510 • www.lja.com



# MONUMENT SYMBOL LEGEND

MONUMENT BOX WITH 24" LONG NO. 5 REBAR WITH CAP BEARING THE REGISTRATION NUMBER OF THE RESPONSIBLE SURVEYOR, TO BE SET AFTER CONSTRUCTION IS COMPLETED PER SEC. 147-47 AURORA CITY CODE AND PER SEC. 38-51-105(9)(A)&(B) COLORADO REVISED STATUTES 2020.

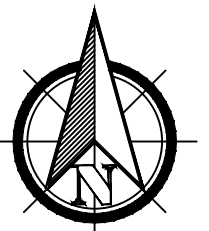


# WATERSTONE SUBDIVISION FILING NO. 4

## LOCATED IN THE EAST 1/2 SECTION 18, TOWNSHIP 4 SOUTH, RANGE 65 WEST OF THE 6TH P.M., CITY OF AURORA, COUNTY OF ARAPAHOE, STATE OF COLORADO

# LEGEND

- # = BLOCK NUMBER
- D.E. = DRAINAGE EASEMENT HEREBY GRANTED
- SD.E. = SIGHT DISTANCE EASEMENT HEREBY GRANTED
- T.E. = TRAIL EASEMENT HEREBY GRANTED
- U.E. = UTILITY EASEMENT HEREBY GRANTED
- STM.E. = STORM EASEMENT HEREBY GRANTED
- REC. NO. = RECEPTION NUMBER
- BK., PG. = BOOK & PAGE



MADERA FRANCISCO,  
MADERA ALEJANDRINA  
REC. NO. B5122741

UNINCORPORATED ARAPAHOE COUNTY

STARLING RYAN C &  
MCNEILLEY LORI L  
REC. NO. D3130005

TERLEP MATTHEW G.  
TERLEP SHARON K  
REC. NO. 72340565

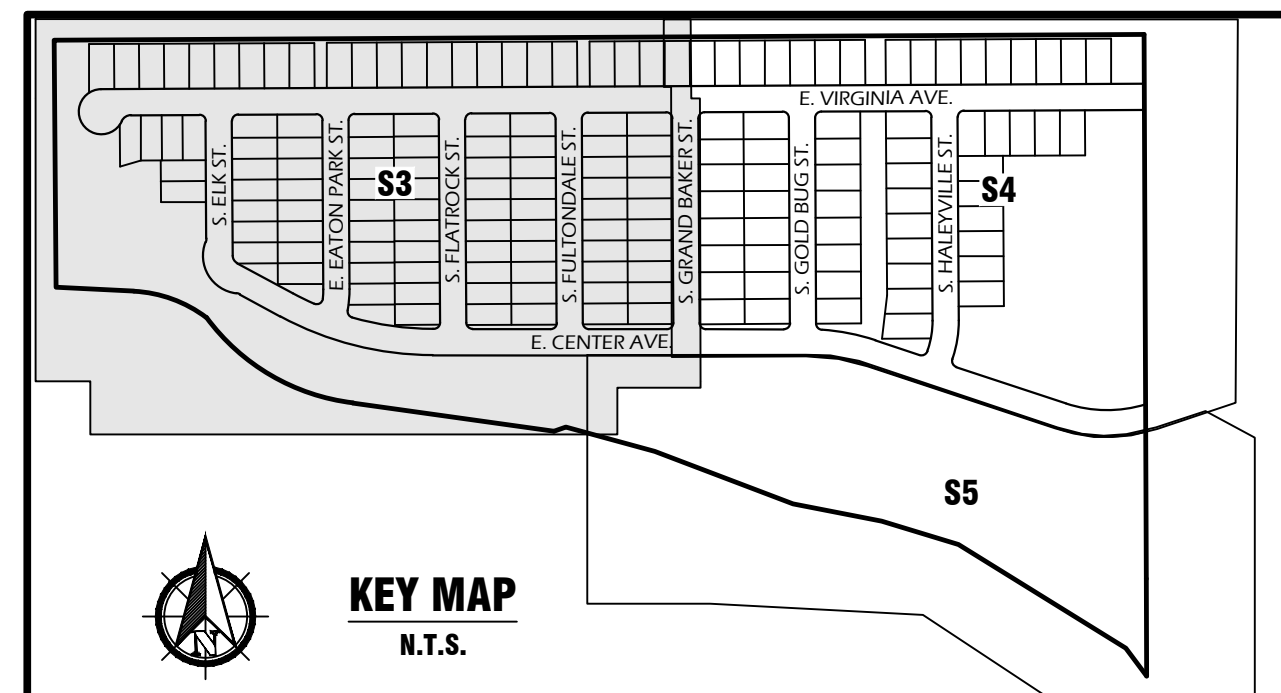
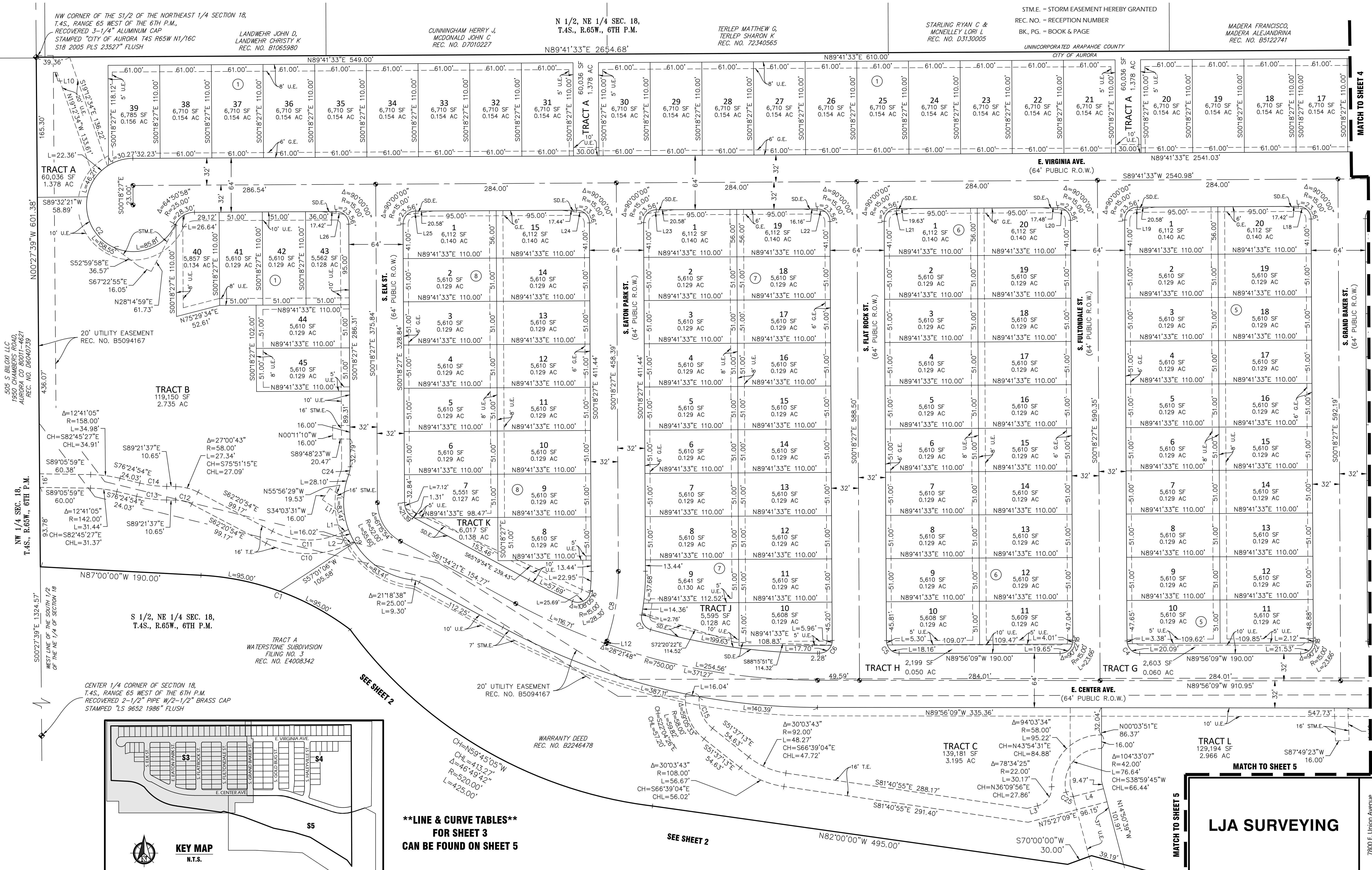
CUNNINGHAM HERRY J.  
MCDONALD JOHN C  
REC. NO. D7010227

LANDWEHR JOHN D.  
LANDWEHR CHRISTY K  
REC. NO. B1065980

NW CORNER OF THE S1/2 OF THE NORTHEAST 1/4 SECTION 18,  
T.4S., RANGE 65 WEST OF THE 6TH P.M.,  
RECOVERED 3-1/4" ALUMINUM CAP  
STAMPED "CITY OF AURORA T4S R65W N1/16C  
S18 2005 PLS 23527" FLUSH

N 1/2, NE 1/4 SEC. 18,  
T.4S., R.65W., 6TH P.M.

N89°41'33"E 2654.68'



**\*\*LINE & CURVE TABLES\*\*  
FOR SHEET 3  
CAN BE FOUND ON SHEET 5**

MATCH TO SHEET 5

LJA SURVEYING

7800 E Union Avenue

Suite 575

Denver, CO 80237

303-950-8510 • www.lja.com

4/30/2025

1023-0004

3 of 5

**LOCATED IN THE EAST 1/2 SECTION 18, TOWNSHIP 4 SOUTH, RANGE 65 WEST OF THE 6TH P.M.,  
CITY OF AURORA, COUNTY OF ARAPAHOE, STATE OF COLORADO**

**SEE SHEET 2**

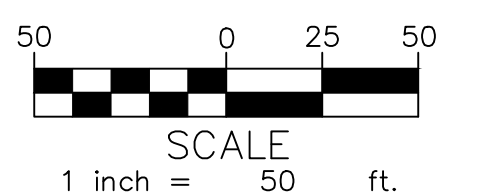
CURVE TABLE			
CURVE	DELTA	RADIUS	LENGTH
C3	89°37'42"	15.00'	23.46'
C16	90°00'00"	15.00'	23.56'
C17	90°00'00"	15.00'	23.56'
C18	18°34'55"	250.00'	81.08'
C19	85°42'44"	15.00'	22.44'
C20	90°22'18"	15.00'	23.66'
C21	18°12'36"	500.00'	158.91'

MONUMENT BOX WITH 24" LONG NO. 5 REBAR WITH CAP  
BEARING THE REGISTRATION NUMBER OF THE  
RESPONSIBLE SURVEYOR, TO BE SET AFTER  
CONSTRUCTION IS COMPLETED PER SEC. 147-47 AURORA  
CITY CODE AND PER SEC. 38-51-105(9)(A)&(B)  
COLORADO REVISED STATUTES 2020.

PARKLANDS VILLAGE 2  
(FUTURE FILINGS)

(UNPLATTED)

NW 1/4 SEC. 17,  
T.4S., R.65W., 6TH P.M.



7800 E. Union Avenue  
Suite 575  
Denver, CO 80237  
803-930-8510 • [www.lja.com](http://www.lja.com)

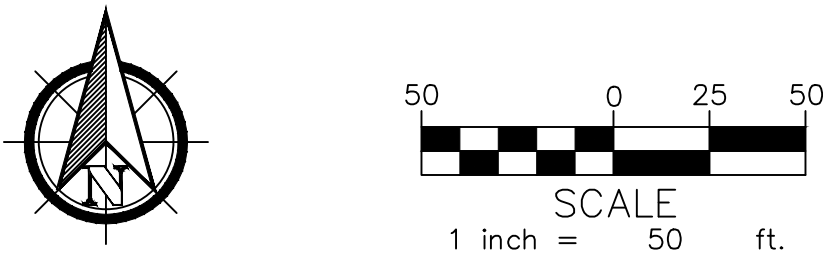
Date:	Job No.:	Sheet:
4/30/2025	1023-0004	4 of 5

### LEGEND

( # ) = BLOCK NUMBER  
 D.E. = DRAINAGE EASEMENT HEREBY GRANTED  
 S.D.E. = SIGHT DISTANCE EASEMENT HEREBY GRANTED  
 T.E. = TRAIL EASEMENT HEREBY GRANTED  
 U.E. = UTILITY EASEMENT HEREBY GRANTED  
 S.T.M.E. = STORM EASEMENT HEREBY GRANTED  
 C. NO. = RECEPTION NUMBER  
 K. PG. = BOOK & PAGE

I:\JOB FOLDERS\1023 - LENNAR\1023-0004\SURVEY\06 CAD\PRODUCTION FILES\1023-0004\_WATERSTONE - DETAILS PRINTED ON: 4/30/2025 8:45 AM

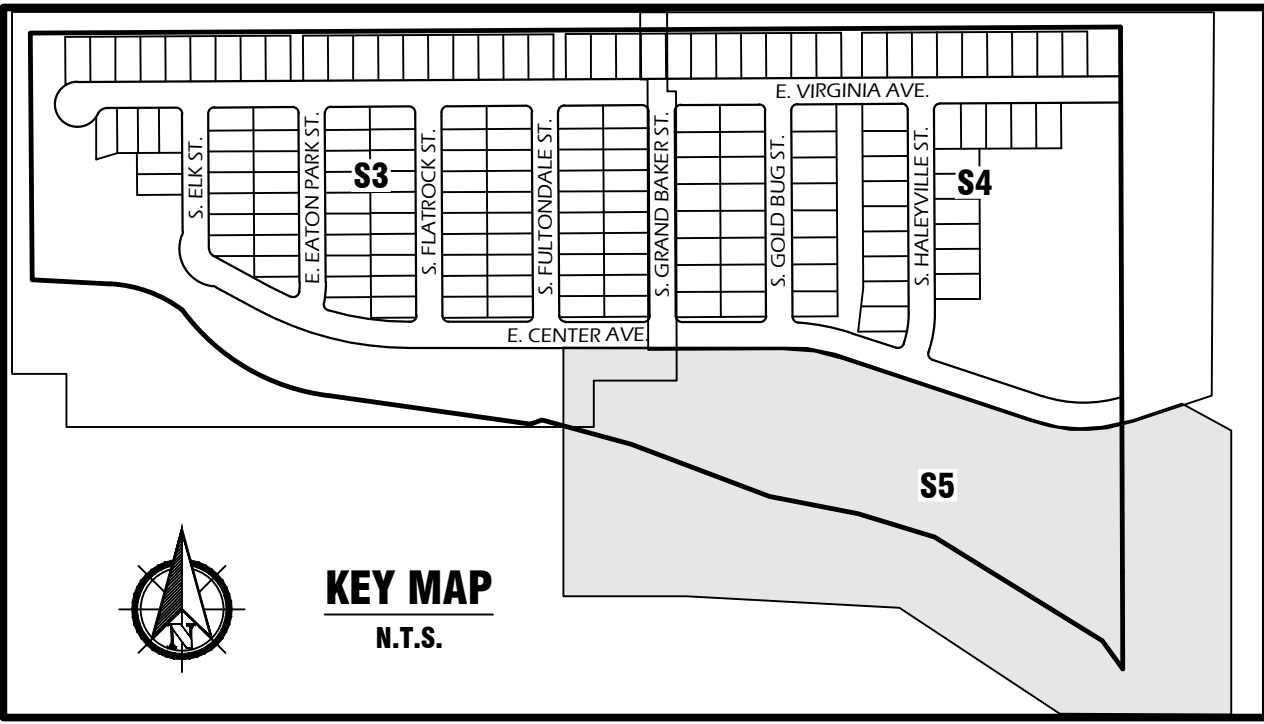




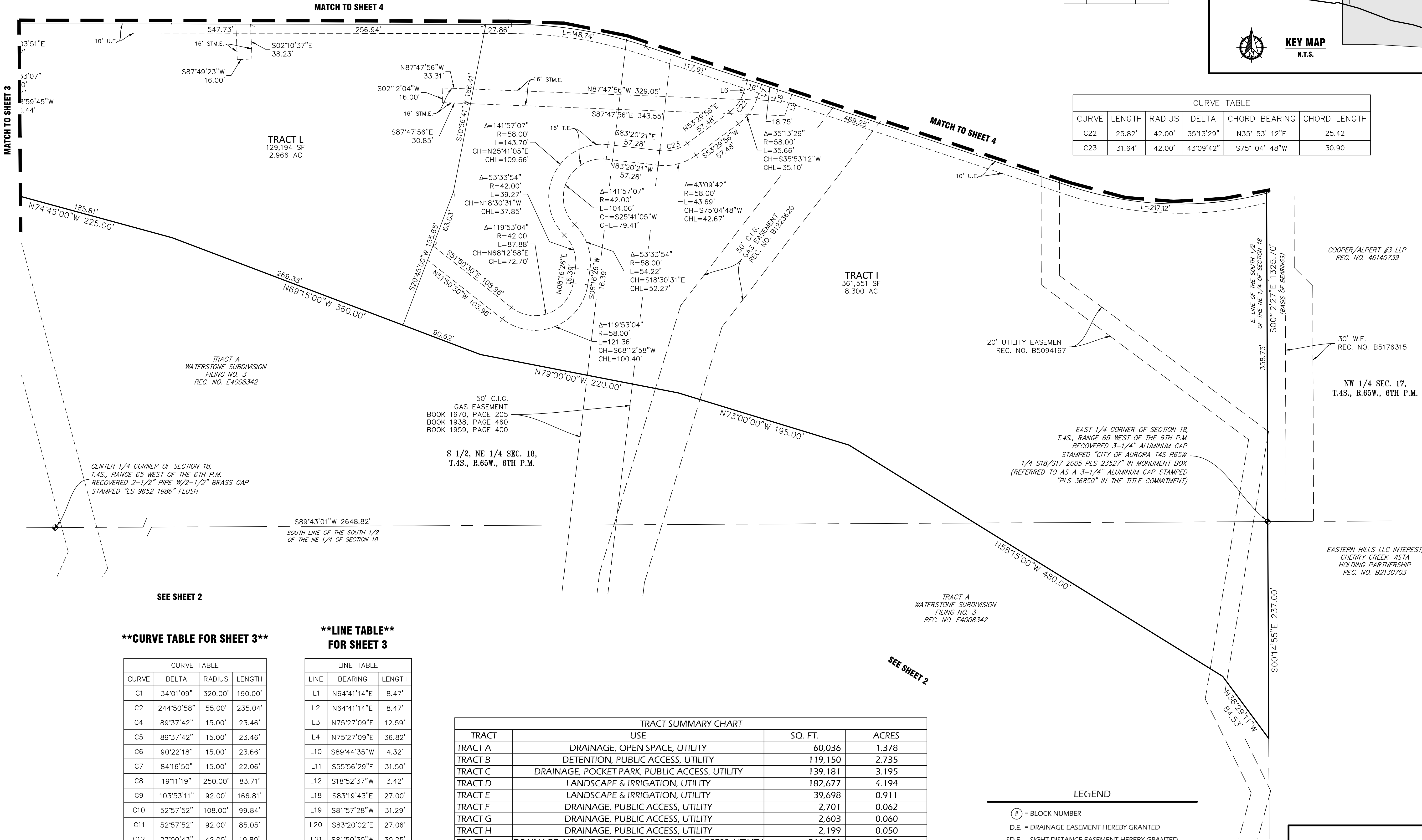
# WATERSTONE SUBDIVISION FILING NO. 4

LOCATED IN THE EAST 1/2 SECTION 18, TOWNSHIP 4 SOUTH, RANGE 65 WEST OF THE 6TH P.M.,  
CITY OF AURORA, COUNTY OF ARAPAHOE, STATE OF COLORADO

LINE TABLE		
LINE	BEARING	LENGTH
L6	N18°16'27"E	15.45'
L7	S18°16'27"W	15.45'
L8	S18°16'27"W	12.52'
L9	N18°16'27"E	24.56'



CURVE TABLE					
CURVE	LENGTH	RADIUS	DELTA	CHORD BEARING	CHORD LENGTH
C22	25.82'	42.00'	35°13'29"	N35° 53' 12"E	25.42
C23	31.64'	42.00'	43°09'42"	S75° 04' 48"W	30.90



**\*\*CURVE TABLE FOR SHEET 3\*\***

CURVE	DELTA	RADIUS	LENGTH
C1	34°01'09"	320.00'	190.00'
C2	244°50'58"	55.00'	235.04'
C4	89°37'42"	15.00'	23.46'
C5	89°37'42"	15.00'	23.46'
C6	90°22'18"	15.00'	23.66'
C7	84°16'50"	15.00'	22.06'
C8	19°11'19"	250.00'	83.71'
C9	103°53'11"	92.00'	166.81'
C10	52°57'52"	108.00'	99.84'
C11	52°57'52"	92.00'	85.05'
C12	27°00'43"	42.00'	19.80'
C13	12°56'42"	158.00'	35.70'
C14	12°56'42"	142.00'	32.08'
C15	57°46'11"	42.00'	42.35'
C24	21°18'38"	25.00'	9.30'
C25	91°23'21"	7.00'	11.17'

**\*\*LINE TABLE\*\*  
FOR SHEET 3**

LINE	BEARING	LENGTH
L1	N64°41'14"E	8.47'
L2	N64°41'14"E	8.47'
L3	N75°27'09"E	12.59'
L4	N75°27'09"E	36.82'
L10	S89°44'35"W	4.32'
L11	S55°56'29"E	31.50'
L12	S18°52'37"W	3.42'
L18	S83°19'43"E	27.00'
L19	S81°57'28"W	31.29'
L20	S83°20'02"E	27.06'
L21	S81°50'30"W	30.25'
L22	S83°11'56"E	25.59'
L23	S81°57'28"W	31.29'
L24	S83°19'45"E	27.01'
L25	S81°57'25"W	31.28'
L26	S83°19'43"E	27.00'

TRACT SUMMARY CHART			
TRACT	USE	SQ. FT.	ACRES
TRACT A	DRAINAGE, OPEN SPACE, UTILITY	60,036	1.378
TRACT B	DETENTION, PUBLIC ACCESS, UTILITY	119,150	2.735
TRACT C	DRAINAGE, POCKET PARK, PUBLIC ACCESS, UTILITY	139,181	3.195
TRACT D	LANDSCAPE & IRRIGATION, UTILITY	182,677	4.194
TRACT E	LANDSCAPE & IRRIGATION, UTILITY	39,698	0.911
TRACT F	DRAINAGE, PUBLIC ACCESS, UTILITY	2,701	0.062
TRACT G	DRAINAGE, PUBLIC ACCESS, UTILITY	2,603	0.060
TRACT H	DRAINAGE, PUBLIC ACCESS, UTILITY	2,199	0.050
TRACT I	DRAINAGE, NEIGHBORHOOD PARK, PUBLIC ACCESS, UTILITY	361,551	8.300
TRACT J	DRAINAGE, PUBLIC ACCESS, UTILITY	5,595	0.128
TRACT K	DRAINAGE, PUBLIC ACCESS, UTILITY	6,017	0.138
TRACT L	DRAINAGE, PUBLIC ACCESS, UTILITY	129,194	2.966
TRACT M	DRAINAGE, PUBLIC ACCESS, UTILITY	63,424	1.456
TOTAL AREA		1,114,026	25.575

**LEGEND**

- # = BLOCK NUMBER
- D.E. = DRAINAGE EASEMENT HEREBY GRANTED
- S.D.E. = SIGHT DISTANCE EASEMENT HEREBY GRANTED
- T.E. = TRAIL EASEMENT HEREBY GRANTED
- U.E. = UTILITY EASEMENT HEREBY GRANTED
- STM.E. = STORM EASEMENT HEREBY GRANTED
- REC. NO. = RECEPTION NUMBER
- BK., PG. = BOOK & PAGE

**LJA SURVEYING**

7800 E Union Avenue  
Suite 575  
Denver, CO 80237  
303-950-8510 • www.lja.com