

Parcel Map Check Report

Date: 1/17/2025 2:21:56 PM Parcel Name: ROW Description: Process segment
order counterclockwise: False Enable mapcheck across chord: False
North: 701,206.799' East: 223,433.148'

Segment# 1: Line Course: N0° 00' 19"W Length: 17.00' North:
701,223.799' East: 223,433.146'

Segment# 2: Line Course: N89° 37' 52"E Length: 321.03' North:
701,225.866' East: 223,754.170'

Segment# 3: Line Course: N89° 37' 52"E Length: 139.34' North:
701,226.763' East: 223,893.507'

Segment# 4: Line Course: N89° 37' 55"E Length: 537.09' North:
701,230.213' East: 224,430.586'

Segment# 5: Curve Length: 39.11' Radius: 25.00' Delta: 89° 37' 58"
Tangent: 24.84' Chord: 35.24' Course: N44° 48' 56"E Course In: N0° 22' 05"W
Course Out: N89° 59' 57"E RP North: 701,255.212' East: 224,430.425' End
North: 701,255.213' East: 224,455.425'

Segment# 6: Line Course: N0° 00' 03"W Length: 4.27' North:
701,259.483' East: 224,455.425'

Segment# 7: Line Course: N89° 59' 57"E Length: 82.00' North:
701,259.484' East: 224,537.425'

Segment# 8: Line Course: S0° 00' 03"E Length: 3.42' North:
701,256.064' East: 224,537.425'

Segment# 9: Curve Length: 39.43' Radius: 25.00' Delta: 90° 22' 01"
Tangent: 25.16' Chord: 35.47' Course: S45° 11' 03"E Course In: N89° 59'
57"E Course Out: S0° 22' 04"E RP North: 701,256.064' East: 224,562.425' End
North: 701,231.065' East: 224,562.585'

Segment# 10: Line Course: N89° 37' 56"E Length: 642.24' North:
701,235.187' East: 225,204.812'

Segment# 11: Line Course: N89° 37' 58"E Length: 40.93' North:
701,235.450' East: 225,245.741'

Segment# 12: Curve Length: 22.92' Radius: 49.50' Delta: 26° 31' 31"
Tangent: 11.67' Chord: 22.71' Course: N76° 22' 11"E Course In: N0° 22' 04"W
Course Out: S26° 53' 35"E RP North: 701,284.948' East: 225,245.424' End
North: 701,240.802' East: 225,267.814'

Segment# 13: Curve Length: 29.86' Radius: 64.50'
Delta: 26° 31' 31" Tangent: 15.20' Chord: 29.59' Course: N76° 22' 11"E
Course In: S26° 53' 35"E Course Out: N0° 22' 04"W RP North:
701,183.277' East: 225,296.989' End North: 701,247.776' East:
225,296.575'

Segment# 14: Line Course: N89° 37' 56"E Length: 2.77' North:
701,247.794' East: 225,299.345'

Segment# 15: Curve Length: 7.95' Radius: 480.00' Delta: 0° 56' 58"
Tangent: 3.98' Chord: 7.95' Course: S0° 50' 33"E Course In: S88° 40' 58"W
Course Out: N89° 37' 56"E RP North: 701,236.760' East: 224,819.472' End
North: 701,239.841' East: 225,299.462'

Segment# 16: Line Course: S0° 22' 04"E Length: 31.05' North:
701,208.791' East: 225,299.661'

Segment# 17: Line Course: N89° 37' 56"E Length: 78.00' North:
701,209.292' East: 225,377.659'

Segment# 18: Line Course: N0° 30' 57"W Length: 39.00' North:
701,248.290' East: 225,377.308'

Segment# 19: Line Course: N89° 37' 56"E Length: 275.29' North:
701,250.057' East: 225,652.593'

Segment# 20: Curve Length: 64.91' Radius: 324.00' Delta: 11°28'42"
 Tangent: 32.56' Chord: 64.80' Course: S84° 37' 43"E Course In: S0° 22' 04"E
 Course Out: N11° 06' 38"E RP North: 700,926.064' East: 225,654.672' End
 North: 701,243.991' East: 225,717.108'

Segment# 21: Curve Length: 55.29' Radius: 276.00' Delta: 11°
 °28'42" Tangent: 27.74' Chord: 55.20' Course: S84° 37' 43"E Course In:
 N11° 06' 38"E Course Out: S0° 22' 04"E RP North: 701,514.818' East:
 225,770.294' End North: 701,238.824' East: 225,772.066'

Segment# 22: Line Course: N89° 37' 56"E Length: 774.70' North:
 701,243.797' East: 226,546.750'

Segment# 23: Line Course: N89° 35' 42"E Length: 1,931.61' North:
 701,257.450' East: 228,478.311'

Segment# 24: Line Course: N85° 34' 36"E Length: 271.15' North:
 701,278.363' East: 228,748.654'

Segment# 25: Line Course: N89° 35' 42"E Length: 512.02' North:
 701,281.982' East: 229,260.661'

Segment# 26: Line
 Course: S0° 24' 18"E Length: 139.00' North: 701,142.986' East:
 229,261.643'

Segment# 27: Line Course: S89° 35' 42"W Length: 508.37' North:
 701,139.392' East: 228,753.286'

Segment# 28: Line Course: N89° 07' 55"W Length: 269.85' North:
 701,143.480' East: 228,483.467'

Segment# 29: Line Course: S89° 35' 42"W Length: 1,935.94' North:
 701,129.796' East: 226,547.576'

Segment# 30: Line Course: N0° 42' 26"W Length: 27.00' North:
 701,156.794' East: 226,547.242'

Segment# 31: Line Course: S89° 37' 56"W Length: 2,653.08' North:
 701,139.764' East: 223,894.217'

Segment# 32: Line Course: S89° 37' 52"W Length: 1,742.21' North:
 701,128.547' East: 222,152.043'

Segment# 33: Line Course: N0° 30' 31"W Length: 70.00' North:
 701,198.545' East: 222,151.422'

Segment# 34: Line Course: N89° 37' 52"E Length: 440.64' North:
 701,201.382' East: 222,592.053'

Segment# 35: Line Course: N0° 12' 47"W Length: 23.86'
 North: 701,225.241' East: 222,591.964'

Segment# 36: Curve Length: 22.14' Radius: 299.50' Delta: 4°14'10"
 Tangent: 11.08' Chord: 22.14' Course: S86° 58' 40"E Course In: N5° 08' 25"E
 Course Out: S0° 54' 15"W RP North: 701,523.537' East: 222,618.797' End
 North: 701,224.074' East: 222,614.071'

Segment# 37: Line Course: S89° 05' 45"E Length: 249.89' North:
 701,220.131' East: 222,863.930'

Segment# 38: Line Course: N89° 37' 52"E Length: 217.58' North:
 701,221.532' East: 223,081.506'

Segment# 39: Line Course: S1° 37' 37"W Length: 17.01' North:
 701,204.529' East: 223,081.023'

Segment# 40: Line Course: N89° 37' 52"E Length: 352.14' North:
 701,206.796' East: 223,433.155'

Perimeter: 14,631.07' Area: 700,244Sq.Ft. Error Closure: 0.008 Course:
 S69° 51' 54"E Error North : -0.0028 East: 0.0076
 Precision 1: 1,828,886.25

Parcel Map Check Report

Date: 1/17/2025 2:20:14 PM Parcel Name: Site 1 - E 26TH AVE BNDY Description:
E 26TH AVE BNDY Process segment order counterclockwise: False Enable mapcheck
across chord: False North: 700,131.204' East: 234,919.868'

Segment# 1: Line Course: N89° 37' 52"E Length: 440.64' North:
700,134.041' East: 235,360.499'

Segment# 2: Line Course: N0° 12' 47"W Length: 23.86' North:
700,157.901' East: 235,360.410'

Segment# 3: Curve Length: 22.14' Radius: 299.50' Delta: 4° 14' 10"
Tangent: 11.08' Chord: 22.14' Course: S86° 58' 40"E Course In: N5° 08' 25"E
Course Out: S0° 54' 15"W RP North: 700,456.196' East: 235,387.244' End
North: 700,156.734' East: 235,382.518'

Segment# 4: Line Course: S89° 05' 45"E Length: 249.89' North:
700,152.790' East: 235,632.376'

Segment# 5: Line Course: N89° 37' 52"E Length: 217.58' North:
700,154.191' East: 235,849.952'

Segment# 6: Line Course: S1° 37' 37"W Length: 17.01'
North: 700,137.188' East: 235,849.469'

Segment# 7: Line Course: N89° 37' 53"E Length: 352.14' North:
700,139.454' East: 236,201.602'

Segment# 8: Line Course: N0° 00' 18"E Length: 17.00' North:
700,156.454' East: 236,201.603'

Segment# 9: Line Course: N89° 37' 53"E Length: 321.03' North:
700,158.519' East: 236,522.627'

Segment# 10: Line Course: N89° 37' 52"E Length: 139.34' North:
700,159.416' East: 236,661.964'

Segment# 11: Line Course: N89° 37' 55"E Length: 537.09' North:
700,162.866' East: 237,199.043'

Segment# 12: Curve Length: 39.11' Radius: 25.00' Delta: 89° 37' 58"
Tangent: 24.84' Chord: 35.24' Course: N44° 48' 56"E Course In: N0° 22' 05"W
Course Out: N89° 59' 57"E RP North: 700,187.866' East: 237,198.882' End
North: 700,187.866' East: 237,223.882'

Segment# 13: Line Course: N0° 00' 03"W Length: 4.27' North:
700,192.136' East: 237,223.882'

Segment# 14: Line Course: N89° 59' 57"E Length: 82.00'
North: 700,192.137' East: 237,305.882'

Segment# 15: Line Course: S0° 00' 03"E Length: 3.42' North:
700,188.717' East: 237,305.882'

Segment# 16: Curve Length: 39.43' Radius: 25.00' Delta: 90° 22' 01"
Tangent: 25.16' Chord: 35.47' Course: S45° 11' 03"E Course In: N89° 59'
57"E Course Out: S0° 22' 04"E RP North: 700,188.718' East: 237,330.882' End
North: 700,163.718' East: 237,331.042'

Segment# 17: Line Course: N89° 37' 56"E Length: 642.24' North:
700,167.841' East: 237,973.269'

Segment# 18: Line Course: N0° 39' 09"W Length: 32.66' North:
700,200.498' East: 237,972.897'

Segment# 19: Line Course: N89° 34' 54"E Length: 16.42' North:
700,200.618' East: 237,989.317'

Segment# 20: Line Course: N44° 27' 27"E Length: 72.85' North:
700,252.617' East: 238,040.340'

Segment# 21: Line Course: N79° 34' 44"E Length: 20.00' North:
700,256.234' East: 238,060.010'

Segment# 22: Curve Length: 84.22' Radius: 480.00'

Delta: 10°03'13" Tangent: 42.22' Chord: 84.12' Course: S5° 23' 40"E
Course In: S79° 34' 44"W Course Out: N89° 37' 56"E RP North:
700,169.411' East: 237,587.927' End North: 700,172.492' East:
238,067.917'
Segment# 23: Line Course: S0° 22' 04"E Length: 31.05' North:
700,141.443' East: 238,068.117'
Segment# 24: Line Course: N89° 37' 56"E Length: 78.00' North:
700,141.943' East: 238,146.115'
Segment# 25: Line Course: N0° 30' 57"W Length: 39.00' North:
700,180.942' East: 238,145.764'
Segment# 26: Line Course: N89° 37' 56"E Length: 275.29' North:
700,182.709' East: 238,421.048'
Segment# 27: Curve Length: 64.91' Radius: 324.00' Delta: 11°
°28'42" Tangent: 32.56' Chord: 64.80' Course: S84° 37' 43"E Course In: S0°
° 22' 04"E Course Out: N11° 06' 38"E RP North: 699,858.716' East:
238,423.128' End North: 700,176.643' East: 238,485.564'
Segment# 28: Curve Length: 55.29' Radius: 276.00' Delta: 11°
°28'42" Tangent: 27.74'
Chord: 55.20' Course: S84° 37' 43"E Course In: N11° 06' 38"E Course Out:
S0° 22' 04"E RP North: 700,447.470' East: 238,538.750' End North:
700,171.476' East: 238,540.521'
Segment# 29: Line Course: N89° 37' 56"E Length: 774.70' North:
700,176.448' East: 239,315.205'
Segment# 30: Line Course: N89° 35' 42"E Length: 1,931.61' North:
700,190.102' East: 241,246.767'
Segment# 31: Line Course: N85° 34' 36"E Length: 271.15' North:
700,211.014' East: 241,517.109'
Segment# 32: Line Course: N89° 35' 42"E Length: 512.02' North:
700,214.634' East: 242,029.117'
Segment# 33: Line Course: S0° 24' 18"E Length: 139.00' North:
700,075.637' East: 242,030.099'
Segment# 34: Line Course: S89° 35' 42"W Length: 508.37' North:
700,072.044' East: 241,521.742'
Segment# 35: Line Course: N89° 07' 55"W Length: 269.85' North:
700,076.132' East: 241,251.923'
Segment# 36: Line Course: S89° 35' 42"W Length: 1,935.94'
North: 700,062.448' East: 239,316.031'
Segment# 37: Line Course: N0° 42' 26"W Length: 27.00' North:
700,089.445' East: 239,315.698'
Segment# 38: Line Course: S89° 37' 56"W Length: 2,653.08' North:
700,072.416' East: 236,662.673'
Segment# 39: Line Course: S89° 37' 52"W Length: 1,742.21' North:
700,061.199' East: 234,920.499'
Segment# 40: Line Course: N0° 30' 31"W Length: 70.00' North:
700,131.196' East: 234,919.877'
Perimeter: 14,752.79' Area: 705,567Sq.Ft. Error Closure: 0.012 Course:
S49° 08' 42"E Error North : -0.0081 East: 0.0093
Precision 1: 1,229,400.83

Parcel Map Check Report

Date: 1/17/2025 2:21:27 PM Parcel Name: Site 1 - TRACT A Description: TRACT A
Process segment order counterclockwise: False Enable mapcheck across chord:
False North: 701,267.841' East: 225,204.443'

Segment# 1: Line Course: N89° 34' 54"E Length: 16.42' North:
701,267.961' East: 225,220.862'

Segment# 2: Line Course: N44° 27' 27"E Length: 72.85' North:
701,319.959' East: 225,271.885'

Segment# 3: Line Course: N79° 34' 44"E Length: 20.00' North:
701,323.577' East: 225,291.555'

Segment# 4: Curve Length: 76.27' Radius: 480.00' Delta: 9° 06' 15"
Tangent: 38.22' Chord: 76.19' Course: S5° 52' 09"E Course In: S79° 34' 44"W
Course Out: N88° 40' 58"E RP North: 701,236.753' East: 224,819.473' End
North: 701,247.788' East: 225,299.346'

Segment# 5: Line Course: S89° 37' 56"W Length: 2.77' North:
701,247.770' East: 225,296.576'

Segment# 6: Curve Length: 29.86' Radius: 64.50' Delta: 26° 31' 31"
Tangent: 15.20'

Chord: 29.59' Course: S76° 22' 11"W Course In: S0° 22' 04"E Course Out:
N26° 53' 35"W RP North: 701,183.271' East: 225,296.990' End North:
701,240.796' East: 225,267.815'

Segment# 7: Curve Length: 22.92' Radius: 49.50' Delta: 26° 31' 31"
Tangent: 11.67' Chord: 22.71' Course: S76° 22' 11"W Course In: N26° 53'
35"W Course Out: S0° 22' 04"E RP North: 701,284.942' East: 225,245.425' End
North: 701,235.443' East: 225,245.742'

Segment# 8: Line Course: S89° 37' 58"W Length: 40.93' North:
701,235.181' East: 225,204.813'

Segment# 9: Line Course: N0° 39' 09"W Length: 32.66' North:
701,267.839' East: 225,204.441'

Perimeter: 314.68' Area: 5,323Sq.Ft. Error Closure: 0.002 Course: S34°
07' 07"W Error North : -0.0020 East: -0.0014

Precision 1: 157,340.00

COLORADO LAND SURVEY MONUMENT RECORD

REPORT ONE MONUMENT ONLY ON THIS FORM
REPRODUCTION OF THIS FORM IS AUTHORIZED.

005881

All items to be filled in by the Land Surveyor using permanent black lettering and lines which can be reproduced. (Except)*

1. TYPE OF MONUMENT

(Check one)

☐ Section Corner☒ Quarter Corner☐ Bench mark☐ Other _____

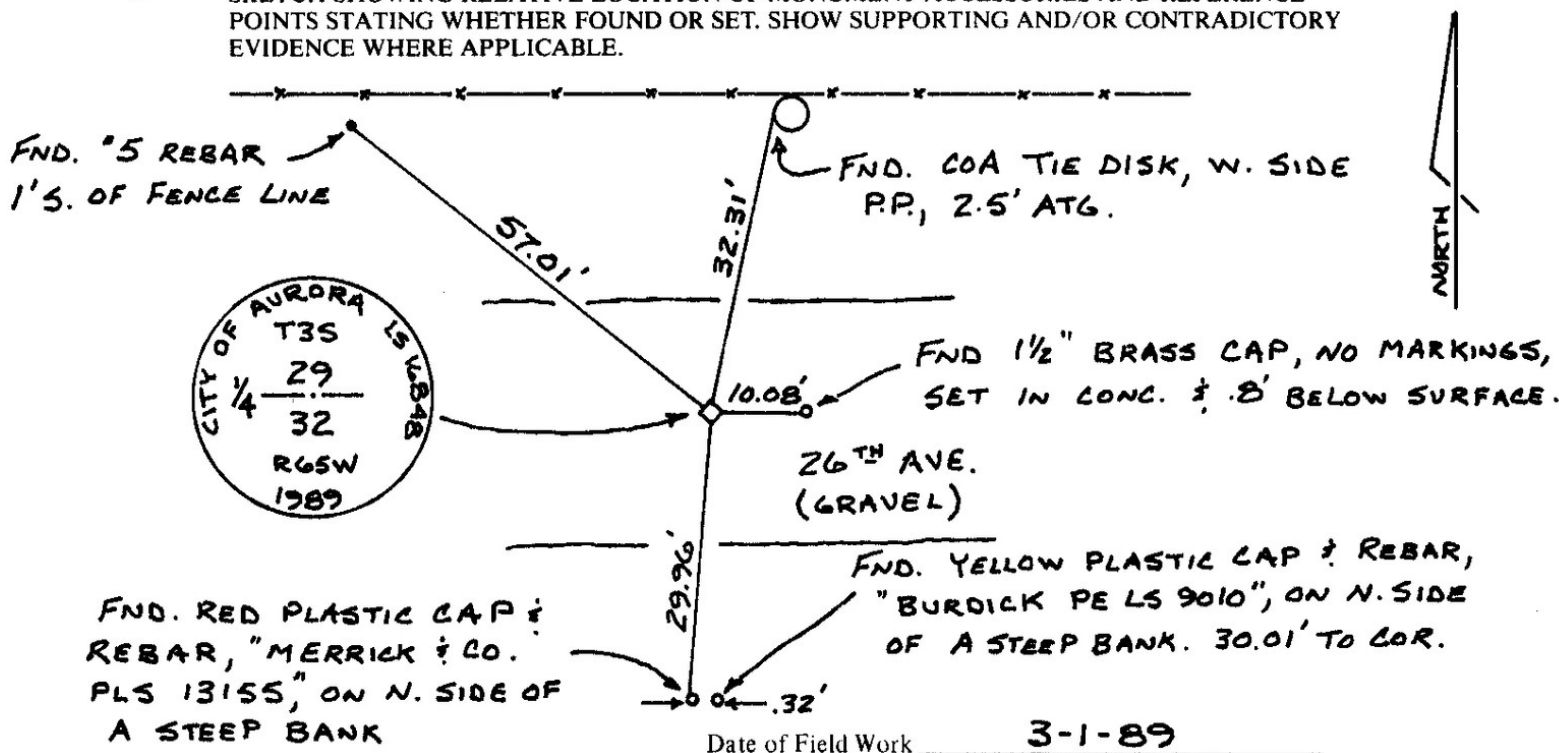
2. DESCRIPTION OF MONUMENT FOUND.

Found 3" dia. aluminum cap on a 5/8" dia. aluminum rod, 1' below surface of gravel road.

3. DESCRIPTION OF MONUMENT ESTABLISHED BY YOU TO PERPETUATE THE LOCATION OF THIS POINT.

Set a 3" dia. brass cap in 3" dia. galv. pipe 30" long, in concrete, 1.1' below surface of road, in place of the 3" dia. aluminum cap. Set COA range box .5' below surface of road.

4. SKETCH SHOWING RELATIVE LOCATION OF MONUMENT ACCESSORIES AND REFERENCE POINTS STATING WHETHER FOUND OR SET. SHOW SUPPORTING AND/OR CONTRADICTORY EVIDENCE WHERE APPLICABLE.

Date of Field Work 3-1-89

5. CERTIFICATION

This is to certify that I was in responsible charge of the surveying work described in this record and that to the best of my knowledge the information presented herein is true and correct.

RECEIVED
JUN 1 1989

Date MAY 4, 1989

Signature

Name

Phone

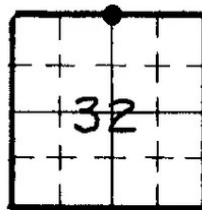
COLO. ST. BD. OF REG.
FOR PE AND PLS

CITY OF AURORA

695-7550

6. LOCATION DIAGRAM

1" = 1 Mile



• = Location of
Monument



Surveyor's Seal

*(Do not fill in)

Accepted for Filing

State Board of Registration for Professional
Engineers and Land Surveyors

By

Date

JUN 14 1989

RECEIVED AT OFFICE OF THE COUNTY CLERK;

_____ COUNTY

By

Date

Record to be filed by Index Reference Number,
numerically, then alphabetically, under appro-
priate Township, Range, and Meridian.

7. SEC. 32, T 35, R 65W, 6TH P.M.COUNTY ADAMS INDEX REF. NO. 7-E

8. SEC. _____, T _____, R _____, _____ P.M.

COUNTY _____ INDEX REF. NO. _____

COLORADO LAND SURVEY MONUMENT RECORD

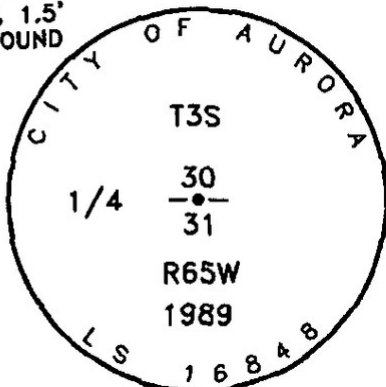
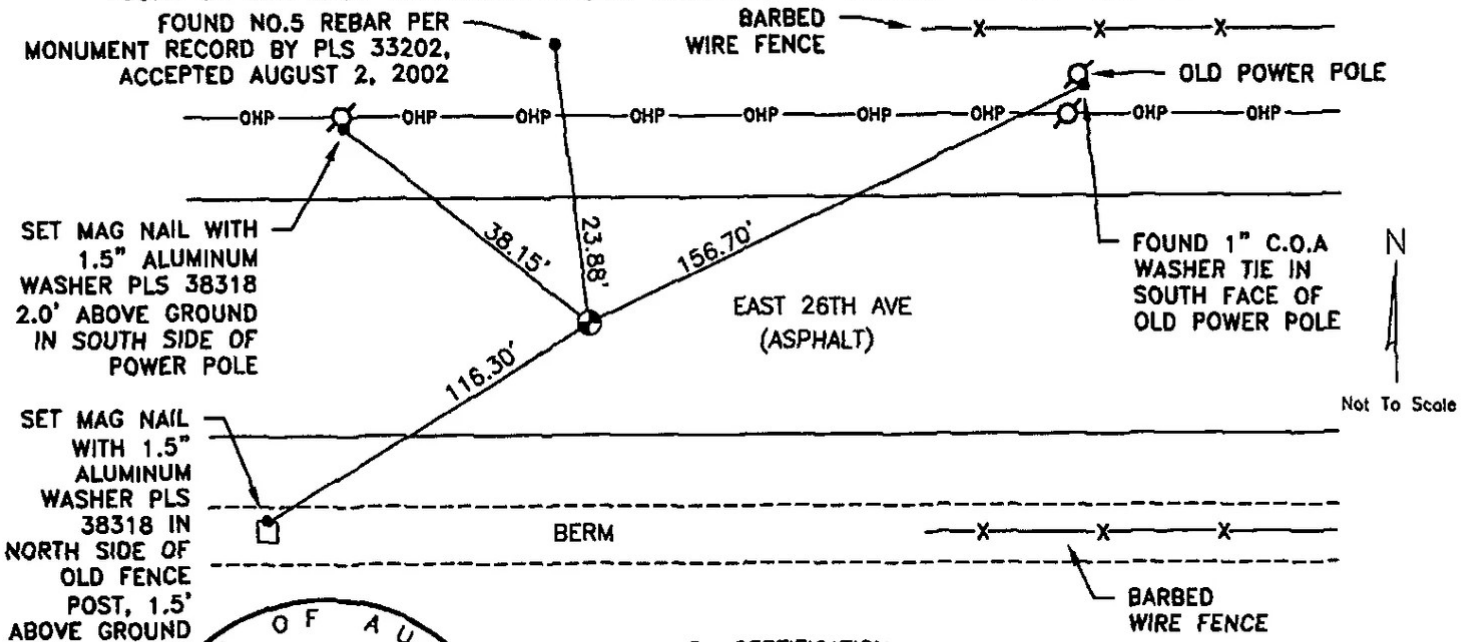
Department of Regulatory Agencies
Board of Licensure for Architects, Professional Engineers and Professional Land Surveyors
1560 Broadway, Suite 1350
Denver, CO 80202
Phone: (303) 894-7800; Fax: (303) 984-2310; EMAIL: aes@dora.state.co.us; V/TDD 711

RECEIVED
AUG 14 2018

Report one monument only on this form - Reproduction of this form is prohibited by COLO. ST. BD. OF LIC.
All items are to be filled in by the Land Surveyor using **PERMANENT BLACK LETTERING** and **FOR ARCH. PE & PLS** AND **REPRODUCED**.

1. TYPE OF MONUMENT: ☐ SECTION CORNER ☒ QUARTER CORNER ☐ SIXTEENTH CORNER ☐ OTHER _____
2. DESCRIPTION AND DATE OF MONUMENT FOUND:
FOUND 3" BRASS CAP, PLS 16848, 1989, 1.7' BELOW LID OF CITY OF AURORA RANGE BOX.
UNABLE TO VERIFY SIZE AND MATERIAL OF MONUMENT.
3. DESCRIPTION OF MONUMENT SET BY YOU TO PERPETUATE THE LOCATION OF THIS POINT:
FOUND AND SET REFERENCE TIES AS SHOWN.

4. SKETCH SHOWING RELATIVE LOCATION OF MONUMENT, ACCESSORIES AND REFERENCE POINTS STATING WHETHER FOUND OR SET. SHOW SUPPORTING AND/OR CONTRADICTORY EVIDENCE WHERE APPLICABLE:



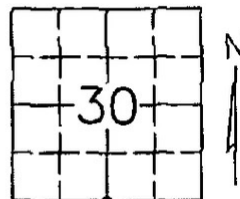
5. CERTIFICATION

This is to certify that I was in responsible charge of the surveying work described in this record and that to the best of my knowledge the information presented herein is true and correct.

Name (Please Print): Peter E. Paulus
Firm Name: Lamp, Rynearson & Associates, Inc.
Firm Address: 4715 Innovation Drive, Fort Collins, CO 80525
Phone: (970) 226-0342

6. LOCATION DIAGRAM

1" = 1 Mile



● = Location of Monument



Signature/Date through Seal

7. SEC 30 T 3S R 65W, 6TH P.M.
COUNTY ADAMS INDEX REF NUMBER 3-E
- **8. SEC _____ T _____ R _____, 6TH P.M.
COUNTY _____ INDEX REF NUMBER _____

** To be used only for monuments located on county lines.



Rev. 02/01/2011

L:\Engineering\0218003 XOG - Howkoye Ave 2018\SURVEY\MONUMENT RECORDS\T3S R65W SEC 30\54.dwg PETE PAULUS

a. Date of Field Work to Establish, Restore or Rehabilitate Monument: 4/28/2018

b. Date Monument was used as a Control Corner: _____
(Surveyor, do not fill in)

ACCEPTED

SEP 30 2018

COLO. ST. BD. OF LIC.
FOR ARCH. PE & PLS

RECEIVED AT OFFICE OF THE COUNTY CLERK
_____ COUNTY

BY: _____

DATE: _____

Record to be filed numerically by Index Reference Number, then alphabetically by letter in the index reference number, then under appropriate Township, Range, and Meridian.

COLORADO LAND SURVEY MONUMENT RECORD

Department of Regulatory Agencies
Board of Licensure for Architects, Professional Engineers and Professional Land Surveyors
1560 Broadway, Suite 1350
Denver, CO 80202

Phone (303) 894-7800; Fax (303) 894-2310; EMAIL aes@dora.state.co.us; V/TDD 711

RECEIVED
MAR 27 2018

Report one monument only on this form - Reproduction of this form is authorized for use by the Land Surveyor using PERMANENT BLACK LETTERING and lines which can be reproduced.

1. TYPE OF MONUMENT: ☒ SECTION CORNER ☐ QUARTER CORNER ☐ SIXTEENTH CORNER ☐ OTHER _____

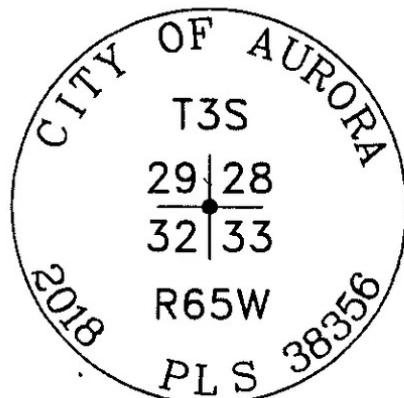
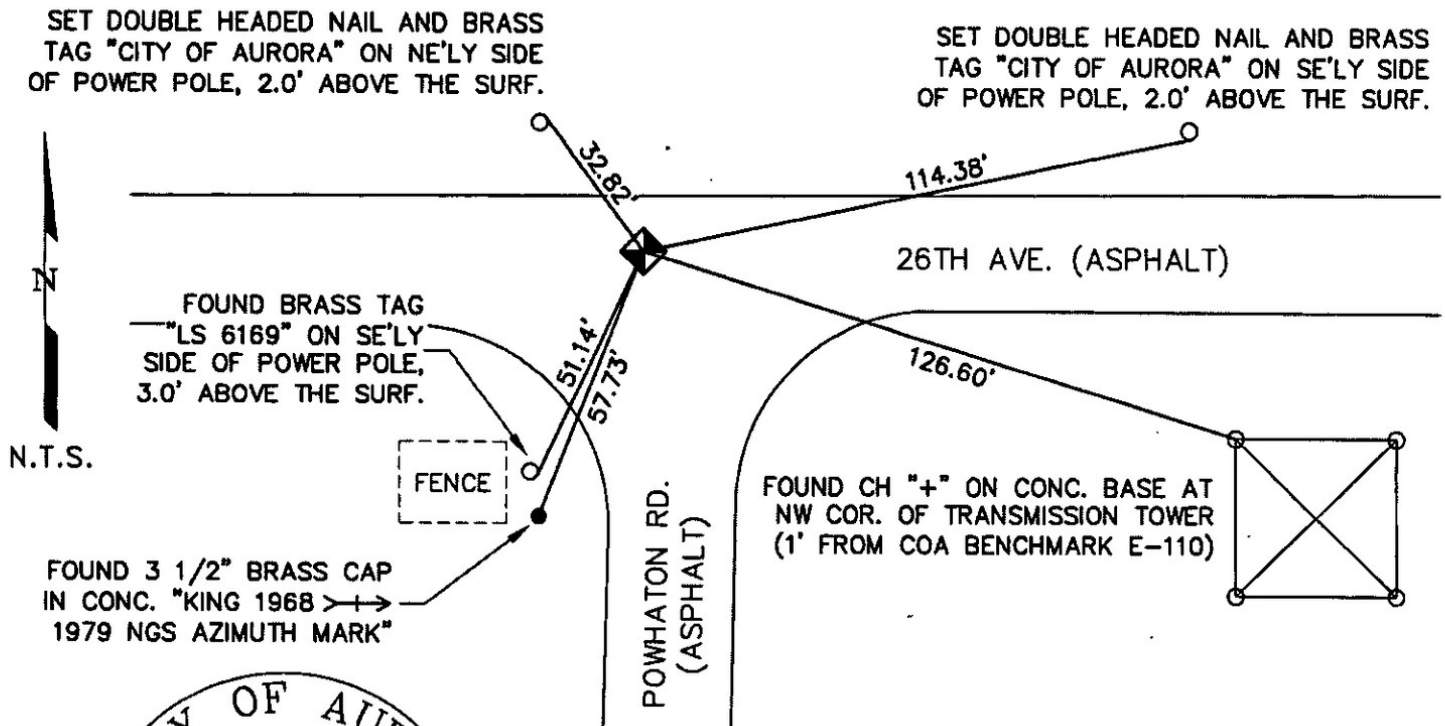
2. DESCRIPTION AND DATE OF MONUMENT FOUND:

FOUND 3" BRASS CAP "CITY OF AURORA LS 16848 1989" 2.3' BELOW THE SURFACE IN A RANGE BOX (LID 2' BELOW THE SURF.) ON 3/12/2018.

3. DESCRIPTION OF MONUMENT SET BY YOU TO PERPETUATE THE LOCATION OF THIS POINT:

SET 2 1/2" ALUMINUM CAP ON A #6 REBAR, IN CONCRETE & ON TOP OF THE FOUND BRASS CAP, 0.5' BELOW THE SURFACE IN A RANGE BOX ON 3/13/2018.

4. SKETCH SHOWING RELATIVE LOCATION OF MONUMENT, ACCESSORIES AND REFERENCE POINTS STATING WHETHER FOUND OR SET, SHOW SUPPORTING AND/OR CONTRADICTORY EVIDENCE WHERE APPLICABLE:



Stamping on Cap

a. Date of field Work to Establish, Restore or Rehabilitate Monument: MARCH 13, 2018

b. Date Monument was used as a Control corner: _____

(Surveyor, do not fill in)

ACCEPTED

APR 30 2018

COLO. ST. BD. OF LIC.
FOR ARC, PE & PLS

RECEIVED AT OFFICE OF THE COUNTY CLERK
_____ COUNTY

BY: _____

DATE: _____

Record to be filed numerically by Index Reference Number, then alphabetically by letter in the index reference number, then under appropriate Township, Range, and Meridian.

5. CERTIFICATION

This is to certify that I was in responsible charge of the surveying work described in this record and that to the best of my knowledge the information presented herein is true and correct.

Name (Please Print): ERIC W. ANSART

Firm Name: CITY OF AURORA

Firm Address: 13636 E. ELLSWORTH AVE.

AURORA, COLORADO 80012

Phone: 303-326-8015

6. LOCATION DIAGRAM

1" = 1 Mile



● = Location of Monument



Signature/Date through Seal

7. SEC 32 T 3S R 65W, 6TH P.M.
COUNTY ADAMS INDEX REF NUMBER 09E

**8. SEC _____ T _____ R _____, _____ P.M.
COUNTY _____ INDEX REF NUMBER _____

** To be used only for monuments located on county lines



Dora
Department of Regulatory Agencies

Rev.02/01/2011

COLORADO LAND SURVEY MONUMENT RECORD

Department of Regulatory Agencies
Board of Licensure for Architects, Professional Engineers and Professional Land Surveyors
1560 Broadway, Suite 1350
Denver, CO 80202

Phone: (303) 894-7800; Fax: (303) 984-2310; EMAIL: aes@dora.state.co.us; V/TDD 711

RECEIVED
AUG 14 2018

Report one monument only on this form - Reproduction of this form is a violation of COLO. ST. BD. OF LIC. FOR ARC, PE, AND PLS. All items are to be filled in by the Land Surveyor using **PERMANENT BLACK LETTERING** and lines which can be reproduced.

1. TYPE OF MONUMENT: ☒ SECTION CORNER ☐ QUARTER CORNER ☐ SIXTEENTH CORNER ☐ OTHER _____

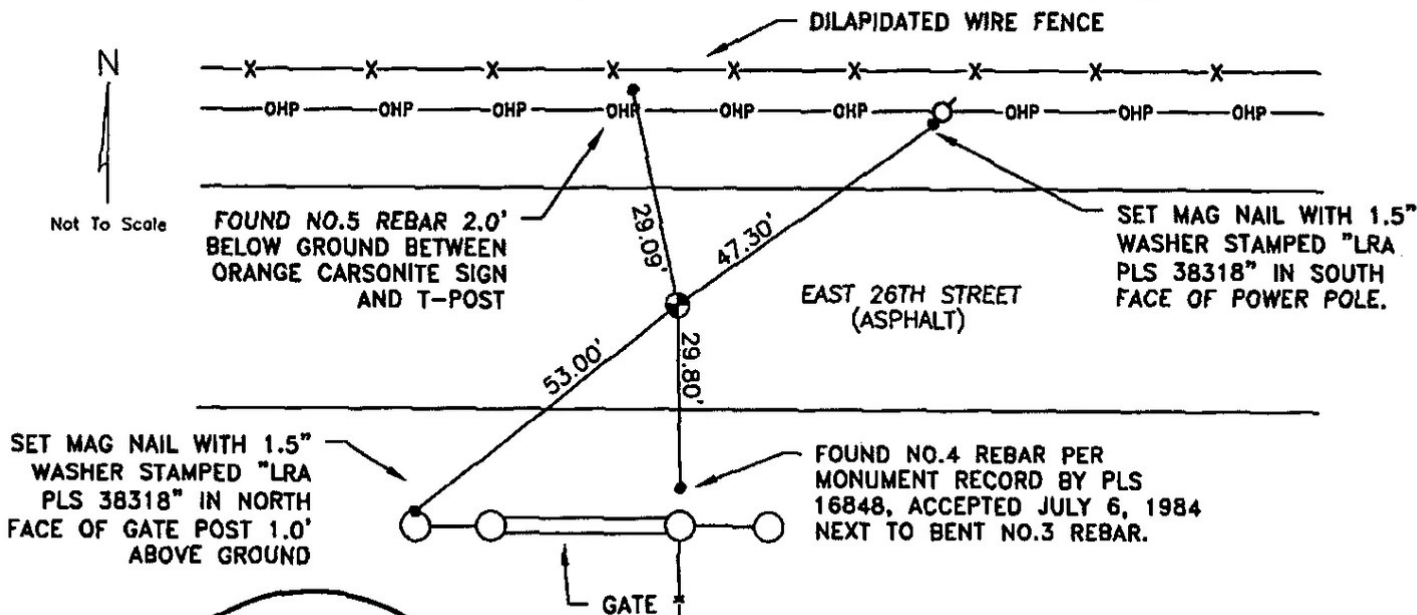
2. DESCRIPTION AND DATE OF MONUMENT FOUND:

FOUND 3" BRASS CAP, ILLEGIBLE, IN CITY OF AURORA RANGE BOX 2.5' BELOW RIM OF BOX.
UNABLE TO VERIFY SIZE AND MATERIAL OF MONUMENT.

3. DESCRIPTION OF MONUMENT SET BY YOU TO PERPETUATE THE LOCATION OF THIS POINT:

FOUND AND SET REFERENCE TIES AS SHOWN.

4. SKETCH SHOWING RELATIVE LOCATION OF MONUMENT, ACCESSORIES AND REFERENCE POINTS STATING WHETHER FOUND OR SET. SHOW SUPPORTING AND/OR CONTRADICTORY EVIDENCE WHERE APPLICABLE:



5. CERTIFICATION

This is to certify that I was in responsible charge of the surveying work described in this record and that to the best of my knowledge the information presented herein is true and correct.

Name (Please Print): Peter E. Paulus

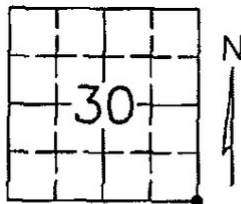
Firm Name: Lamp, Rynearson & Associates, Inc.

Firm Address: 4715 Innovation Drive, Fort Collins, CO 80525

Phone: (970) 226-0342

6. LOCATION DIAGRAM

1" = 1 Mile



● = Location of Monument



Signature/Date through Seal

7. SEC 30 T 3S R 65W, 6TH P.M.

COUNTY ADAMS, INDEX REF NUMBER 5-E

**8. SEC _____ T _____ R _____, 6TH P.M.

COUNTY _____, INDEX REF NUMBER _____

** To be used only for monuments located on county lines.



Dora
Department of Regulatory Agencies

Rev. 02/01/2011

L:\Engineering\0218003 X06 - Howkeys Area 2018\SURVEY\MONUMENT RECORDS\T35 R65W\SEC 30\SE.dwg PETE PAULUS

a. Date of Field Work to Establish, Restore or Rehabilitate Monument: 4/25/2018

b. Date Monument was used as a Control Corner: _____
(Surveyor, do not fill in)

ACCEPTED

SEP 30 2018

COLO. ST. BD. OF LIC.
FOR ARC, PE & PLS

RECEIVED AT OFFICE OF THE COUNTY CLERK
_____ COUNTY

BY: _____

DATE: _____

Record to be filed numerically by Index Reference Number, then alphabetically by letter in the index reference number, then under appropriate Township, Range, and Meridian.

COLORADO LAND SURVEY MONUMENT RECORD

Department of Regulatory Agencies
Board of Registration for Professional Engineers and Professional Land Surveyors
1560 Broadway, Suite 1370, Denver, CO 80202
Phone (303) 894-7788 • Fax (303) 894-7790 • TDD LINE (303) 894-2900

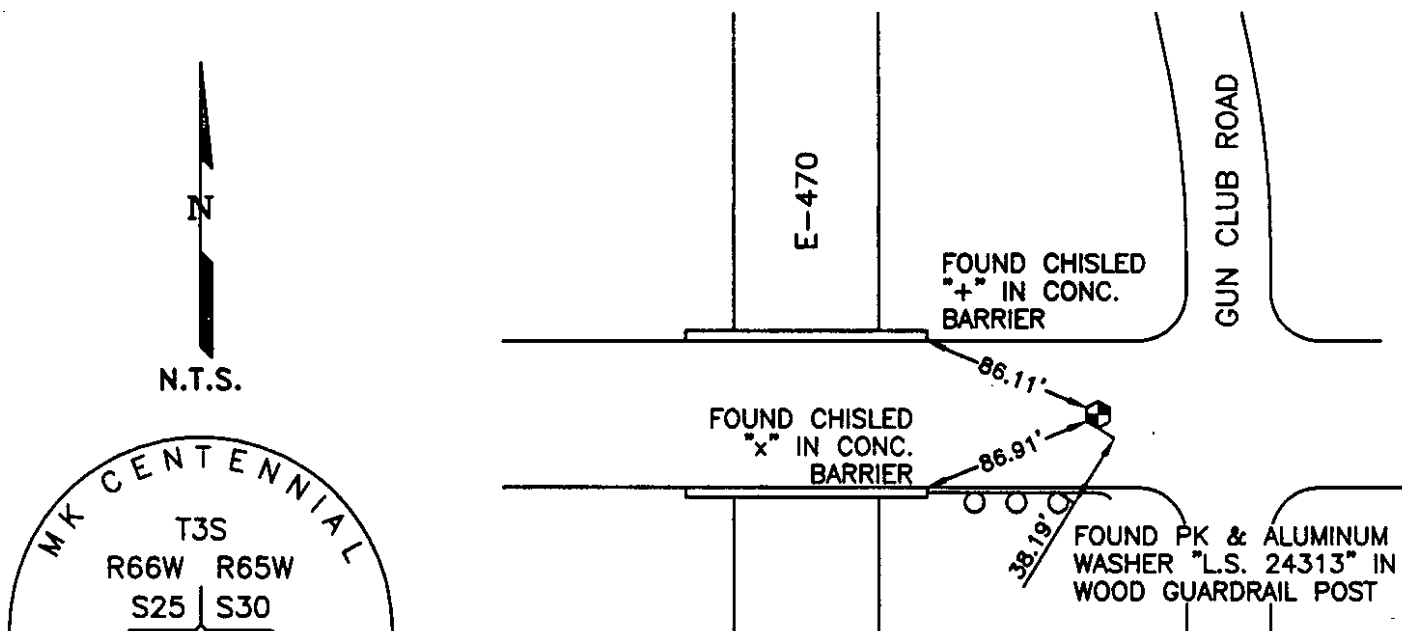
DO NOT WRITE
JUN 11 2002
ST. BD. OF REG.

1. TYPE OF MONUMENT: ☒ SECTION CORNER ☐ QUARTER CORNER ☐ BENCH MARK ☐ OTHER_____

2. DESCRIPTION OF MONUMENT FOUND:
FOUND 3 1/4" ALUMINUM CAP IN RANGE BOX IN ASPHALT ROAD (STAMPED AS SHOWN BELOW).

3. DESCRIPTION OF MONUMENT ESTABLISHED BY YOU TO PERPETUATE THE LOCATION OF THIS POINT:

4. SKETCH SHOWING RELATIVE LOCATION OF MONUMENT, ACCESSORIES AND REFERENCE POINTS STATING WHETHER FOUND OR SET, SHOW SUPPORTING AND/OR CONTRADICTIONARY EVIDENCE WHERE APPLICABLE:



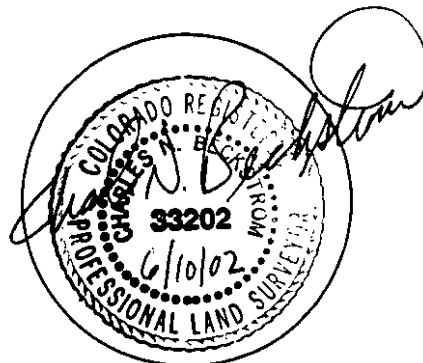
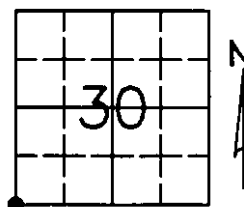
5. CERTIFICATION

This is to certify that I was in responsible charge of the surveying work described in this record and that to the best of my knowledge the information presented herein is true and correct.

Name (Please Print): Charles N. Beckstrom
Firm Name: Engineering Service Company
Firm Address: 1300 South Potomac St., Suite 126, Aurora, Colorado
Phone: 303-337-1393

6. LOCATION DIAGRAM

1" = 1 Mile



● = Location of Monument Signature/Date through Seal

7. SEC 30 T 3S. R 65W. 6TH P.M.
COUNTY ADAMS INDEX REF NUMBER 1-E

**8. SEC _____ T _____ R _____ P.M.
COUNTY _____ INDEX REF NUMBER _____

** To be used only for monuments located on county lines

a. Date of field Work to Establish, Restore or Rehabilitate Monument: APRIL 18, 2002

b. Date Monument was used as Control: APRIL 18, 2002

(Do not fill in)

ACCEPTED
AUG 02 2002
COLD. ST. BD. OF REG.
FOR PE AND PLS

RECEIVED AT OFFICE OF THE COUNTY CLERK
_____ COUNTY

BY: _____
DATE: _____

Record to be filed by Index Reference Number
Numerically, then Alphabetically, under
appropriate Township, Range, and Meridian.