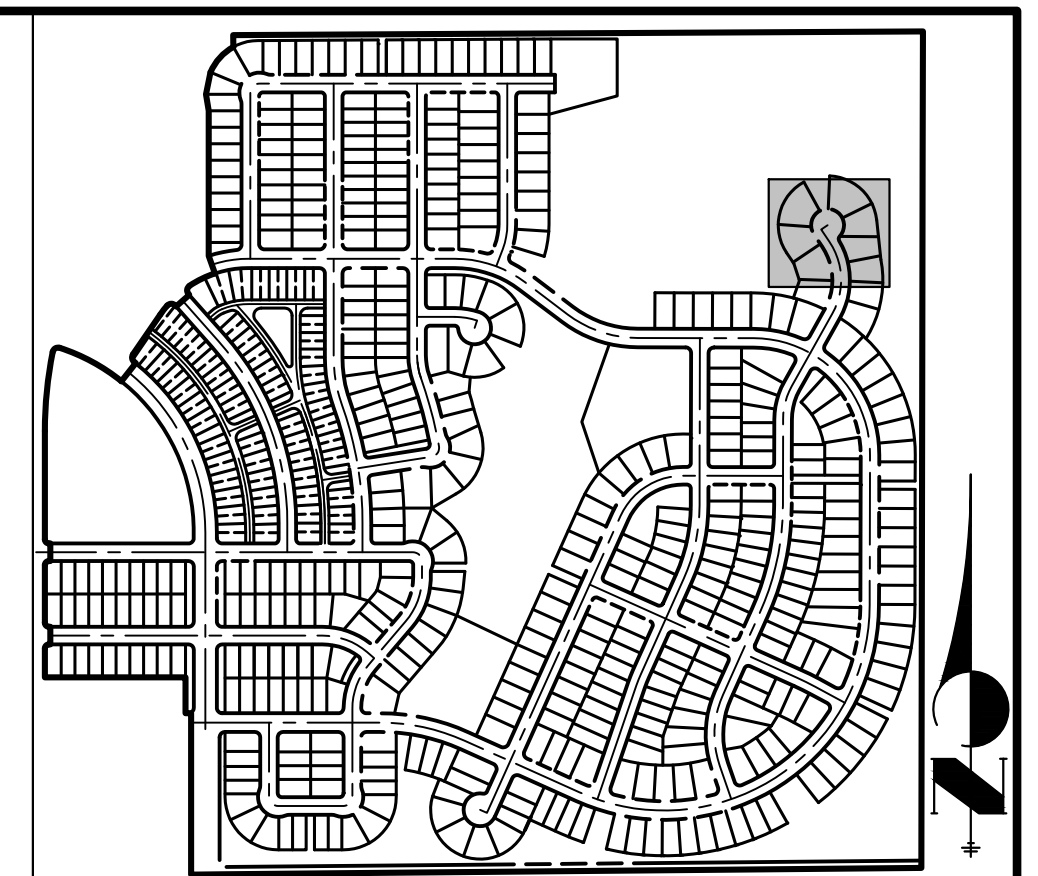


OVERLAND RANCH FILING NO. 2

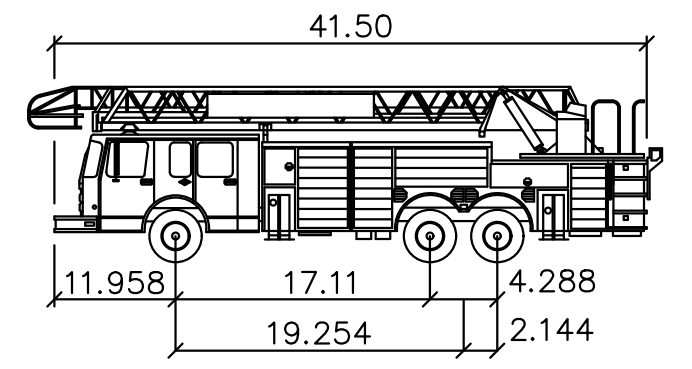
FIRE TRUCK MOVEMENT EXHIBIT



KEY MAP
SCALE: 1"=700'

LEGEND:

- FIRE TRUCK TIRE PATH
- FIRE TRUCK TIRE PATH EXIT
- VEHICLE ENVELOPE



OVERALL LENGTH	: 41.500ft
OVERALL WIDTH	: 8.330ft
OVERALL BODY HEIGHT	: 10.475ft
MIN BODY GROUND CLEARANCE	: 0.906ft
TRACK WIDTH	: 8.250ft
LOCK TO LOCK TIME	: 6.00s
MAX STEERING ANGLE (VIRTUAL)	: 31.90deg

AURORA FIRE TRUCK DETAIL

NOTES

- IN ACCORDANCE WITH CITY OF AURORA "ROADWAY DESIGN AND CONSTRUCTION SPECIFICATIONS", SECTION 4.04.6.04.01; THE EQUIVALENT TURNING TEMPLATE FOR A CITY OF AURORA FIRE TRUCK IS THE BUS-45. THIS EXHIBIT USES THE ABOVE AURORA FIRE TRUCK DETAIL. OVERALL LENGTH 41.5', OVERALL WIDTH 8.33', TRACK WIDTH 8.25', MAX STEERING ANGLE 31.90 DEG.
- IN ACCORDANCE WITH CITY OF AURORA "ROADWAY DESIGN AND CONSTRUCTION SPECIFICATIONS", SECTION 4.07.1.01;
 - WHERE THE FIRE LANE WIDTH IS 26' WIDE THE INSIDE RADIUS SHALL BE 26' AND AN OUTSIDE RADIUS OF 52'.
 - WHERE THE FIRE LANE WIDTH IS 23' WIDE THE INSIDE RADIUS SHALL BE 29' AND AN OUTSIDE RADIUS OF 52'.
 - WHERE A 23' AND 26' FIRE LANE EASEMENT INTERCONNECTS THE INSIDE TURNING RADII MUST BE 29'

FIRE TRUCK MOVEMENT EXHIBIT
OVERLAND RANCH FILING, NO 2
JOB NO. 1611820
9/13/2024
SHEET 1 OF 1



Centennial 303-740-9393 • Colorado Springs 719-593-2593
Fort Collins 970-491-9888 • www.jrengineering.com