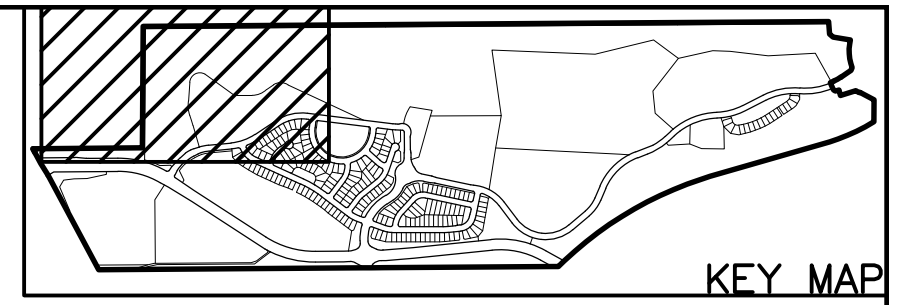


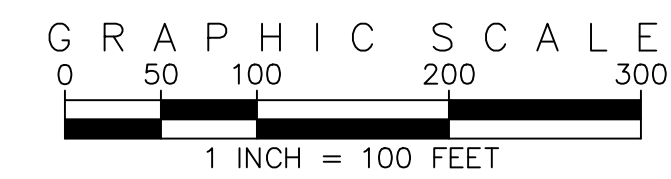
KINGS POINT CONTEXTUAL SITE PLAN NO. 1
CONTEXTUAL SITE PLAN WITH WAIVERS
A PART OF SECTIONS 33 AND 34, TOWNSHIP 5 SOUTH, RANGE 66 WEST OF THE 6TH P.M.
CITY OF AURORA, COUNTY OF ARAPAHOE, STATE OF COLORADO



KEY MAP



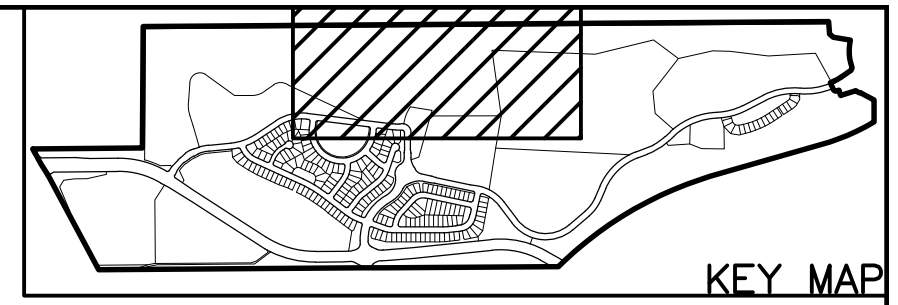
EMK CONSULTANTS, INC.
ENGINEERING & SURVEYING
LAND DEVELOPMENT
SERVICES AND SOLUTIONS
7006 SOUTH ALTON WAY, BLDG. F
CENTENNIAL, COLORADO 80112-2019
(303) 694-1520 www.EMKC.com



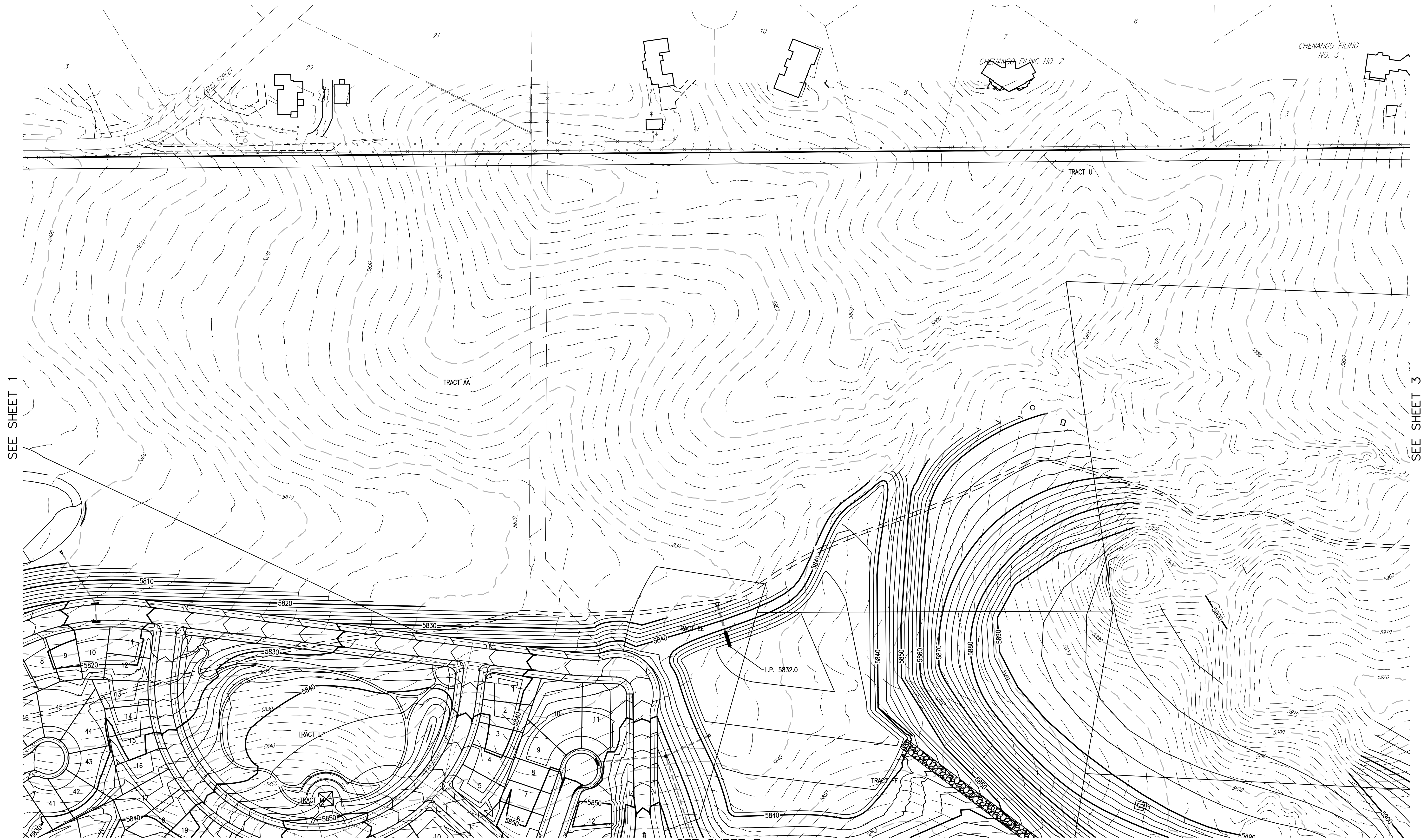
DEVELOPER
KINGSPPOINT LLC
c/o CASTLE ROCK DEVELOPMENT COMPANY
3033 E FIRST AVENUE, SUITE 410
DENVER, COLORADO 80206
PHONE: (303) 394-5525
CONTACT: BRUCE STOKES

PRELIMINARY GRADING PLAN
KINGS POINT FILING
NO. 1 CONTEXTUAL SITE PLAN
PREPARED: 03.15.17
REVISED: 06.15.17
SHEET 1 OF 6

KINGS POINT CONTEXTUAL SITE PLAN NO. 1
CONTEXTUAL SITE PLAN WITH WAIVERS
A PART OF SECTIONS 33 AND 34, TOWNSHIP 5 SOUTH, RANGE 66 WEST OF THE 6TH P.M.
CITY OF AURORA, COUNTY OF ARAPAHOE, STATE OF COLORADO



KEY MAP



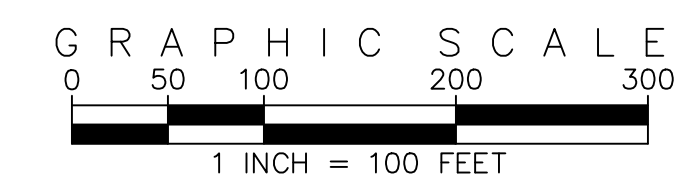
SEE SHEET 1

SEE SHEET 3

SEE SHEET 5



EMK CONSULTANTS, INC.
ENGINEERING & SURVEYING
LAND DEVELOPMENT
SERVICES AND SOLUTIONS
7006 SOUTH ALTON WAY, BLDG. F
CENTENNIAL, COLORADO 80112-2019
(303) 694-1520 www.EMKC.com

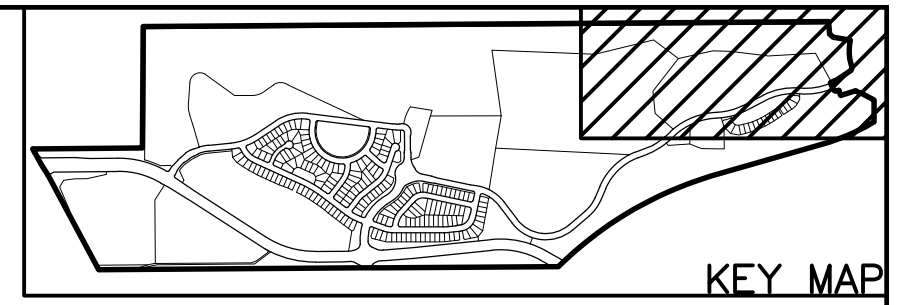


DEVELOPER
KINGSPPOINT LLC
c/o CASTLE ROCK DEVELOPMENT COMPANY
3033 E FIRST AVENUE, SUITE 410
DENVER, COLORADO 80206
PHONE: (303) 394-5525
CONTACT: BRUCE STOKES

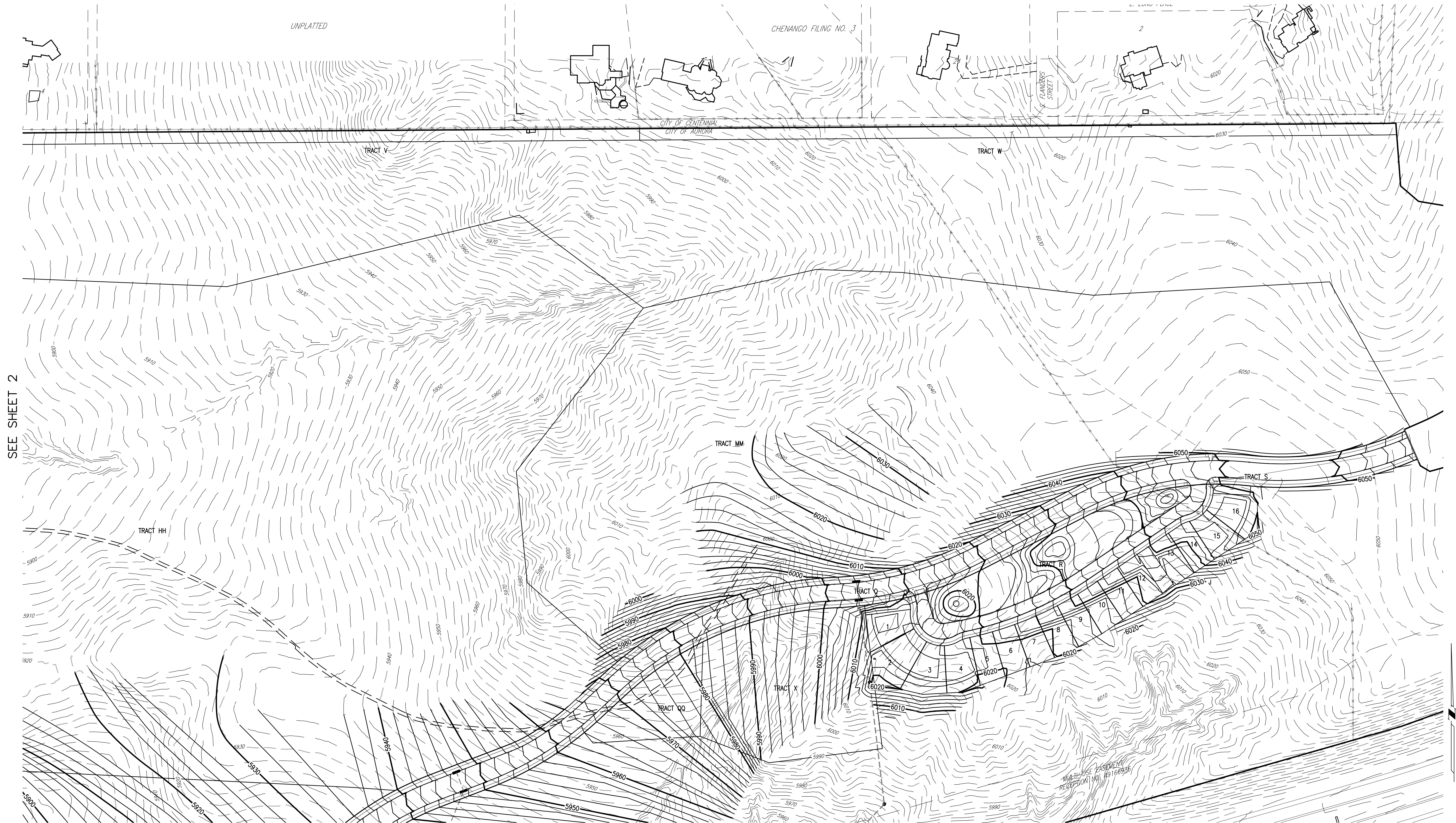
PRELIMINARY GRADING PLAN
KINGS POINT FILING
NO. 1 CONTEXTUAL SITE PLAN
PREPARED: 03.15.17
REVISED: 06.15.17
SHEET 2 OF 6

EMK JOB NO. 12187.17

KINGS POINT CONTEXTUAL SITE PLAN NO. 1
CONTEXTUAL SITE PLAN WITH WAIVERS
A PART OF SECTIONS 33 AND 34, TOWNSHIP 5 SOUTH, RANGE 66 WEST OF THE 6TH P.M.
CITY OF AURORA, COUNTY OF ARAPAHOE, STATE OF COLORADO



KEY MAP

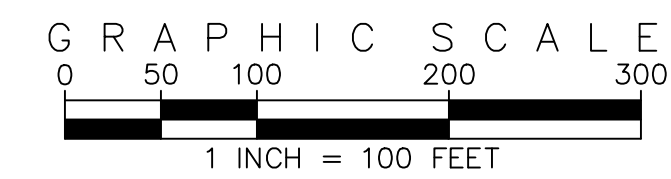


SEE SHEET 2

SEE SHEET 6



EMK CONSULTANTS, INC.
ENGINEERING & SURVEYING
LAND DEVELOPMENT
SERVICES AND SOLUTIONS
7006 SOUTH ALTON WAY, BLDG. F
CENTENNIAL, COLORADO 80112-2019
(303) 694-1520 www.EMKC.com



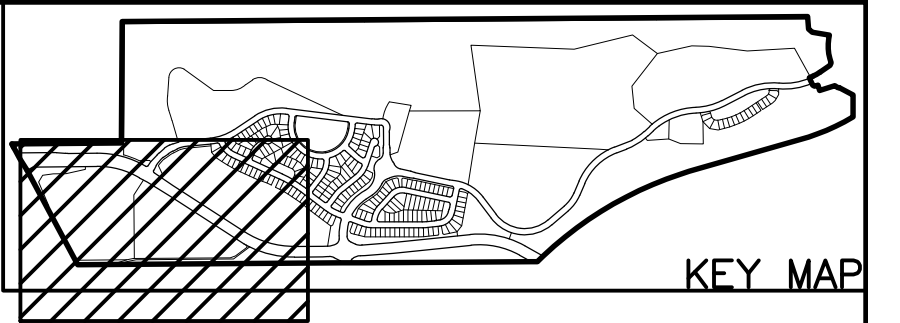
DEVELOPER
KINGSPPOINT LLC
c/o CASTLE ROCK DEVELOPMENT COMPANY
3033 E FIRST AVENUE, SUITE 410
DENVER, COLORADO 80206
PHONE: (303) 394-5525
CONTACT: BRUCE STOKES

PRELIMINARY GRADING PLAN
KINGS POINT FILING
NO. 1 CONTEXTUAL SITE PLAN
PREPARED: 03.15.17
REVISED: 06.15.17
SHEET 3 OF 6

EMK JOB NO. 12187.17

KINGS POINT CONTEXTUAL SITE PLAN NO. 1
CONTEXTUAL SITE PLAN WITH WAIVERS
A PART OF SECTIONS 33 AND 34, TOWNSHIP 5 SOUTH, RANGE 66 WEST OF THE 6TH P.M.
CITY OF AURORA, COUNTY OF ARAPAHOE, STATE OF COLORADO

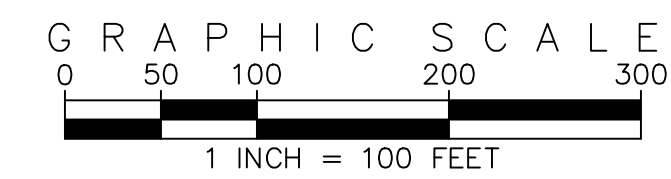
SEE SHEET 1



SEE SHEET 5



EMK CONSULTANTS, INC.
ENGINEERING & SURVEYING
LAND DEVELOPMENT
SERVICES AND SOLUTIONS
7006 SOUTH ALTON WAY, BLDG. F
CENTENNIAL, COLORADO 80112-2019
(303) 694-1520 www.EMKC.com

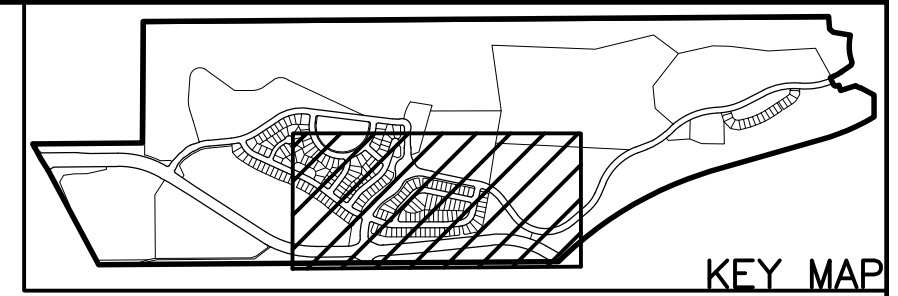


DEVELOPER
KINGSPPOINT LLC
c/o CASTLE ROCK DEVELOPMENT COMPANY
3033 E FIRST AVENUE, SUITE 410
DENVER, COLORADO 80206
PHONE: (303) 394-5525
CONTACT: BRUCE STOKES

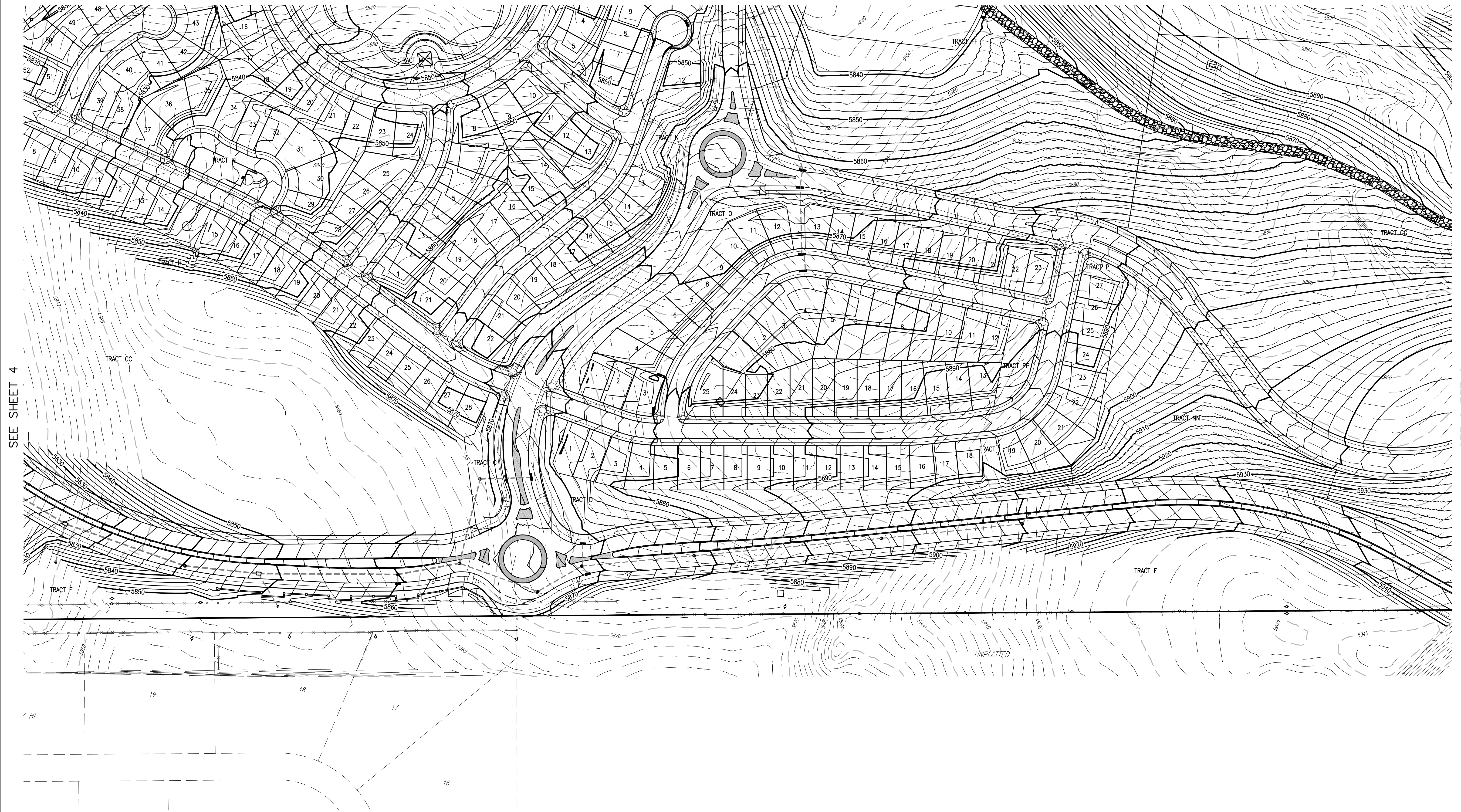
PRELIMINARY GRADING PLAN
KINGS POINT FILING
NO. 1 CONTEXTUAL SITE PLAN
PREPARED: 03.15.17
REVISED: 06.15.17
SHEET 4 OF 6

EMK JOB No. 12187.17

KINGS POINT CONTEXTUAL SITE PLAN NO. 1
CONTEXTUAL SITE PLAN WITH WAIVERS
 A PART OF SECTIONS 33 AND 34, TOWNSHIP 5 SOUTH, RANGE 66 WEST OF THE 6TH P.M.
 CITY OF AURORA, COUNTY OF ARAPAHOE, STATE OF COLORADO



SEE SHEET 2

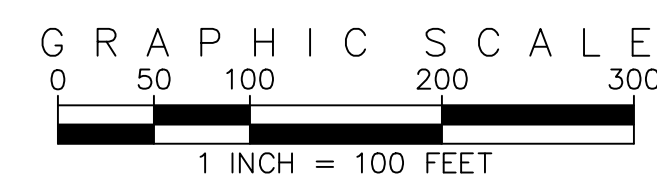


SEE SHEET 4

SEE SHEET 6



EMK CONSULTANTS, INC.
 ENGINEERING & SURVEYING
 LAND DEVELOPMENT
 SERVICES AND SOLUTIONS
 7006 SOUTH ALTON WAY, BLDG. F
 CENTENNIAL, COLORADO 80112-2019
 (303) 694-1520 www.EMKC.com

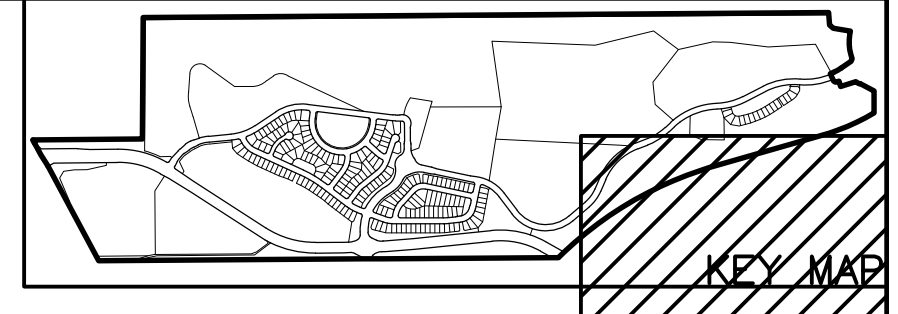


DEVELOPER
 KINGSPPOINT LLC
 c/o CASTLE ROCK DEVELOPMENT COMPANY
 3033 E FIRST AVENUE, SUITE 410
 DENVER, COLORADO 80206
 PHONE: (303) 394-5525
 CONTACT: BRUCE STOKES

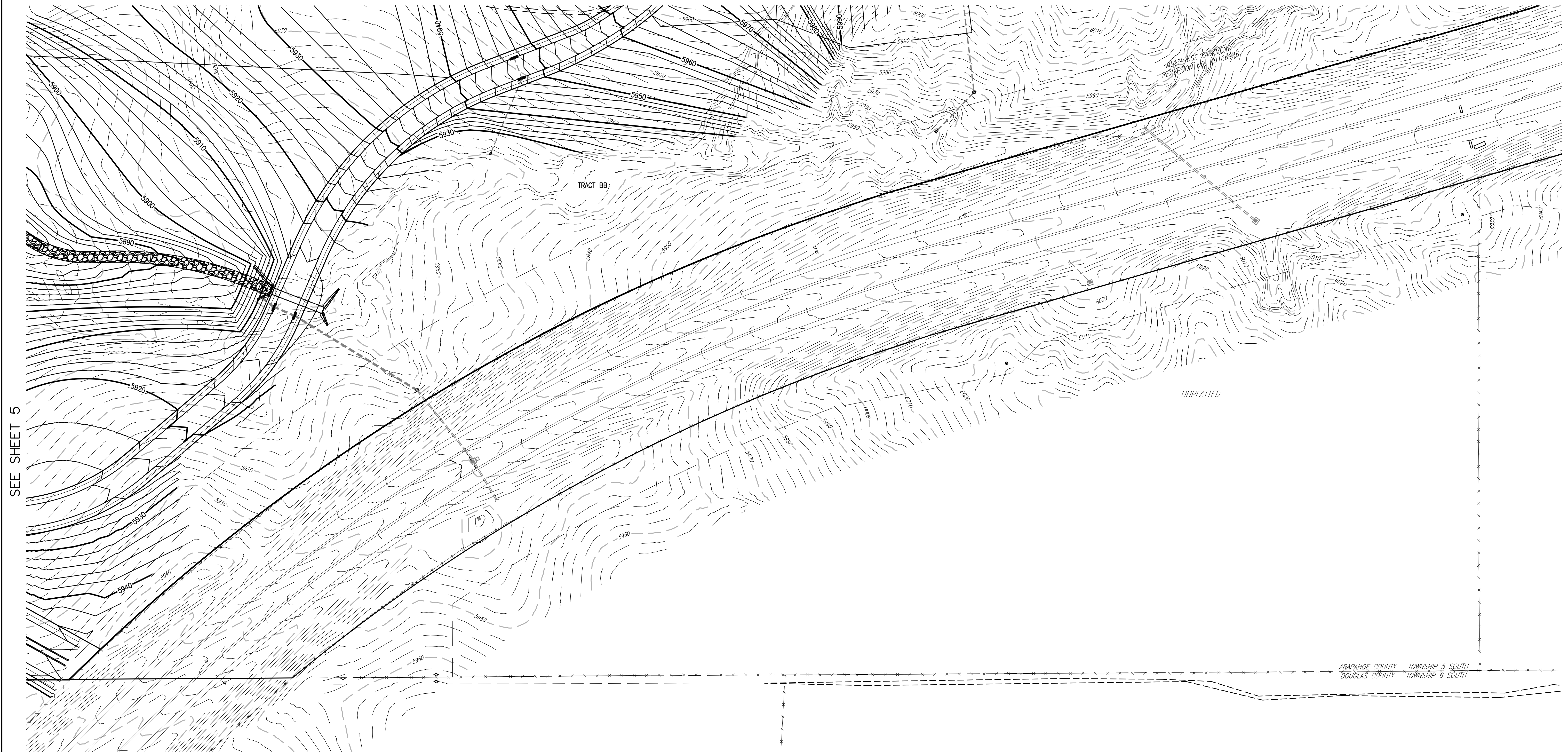
PRELIMINARY GRADING PLAN
KINGS POINT FILING
NO. 1 CONTEXTUAL SITE PLAN
 PREPARED: 03.15.17
 REVISED: 06.15.17
 SHEET 5 OF 6

EMK JOB NO. 12187.17

KINGS POINT CONTEXTUAL SITE PLAN NO. 1
CONTEXTUAL SITE PLAN WITH WAIVERS
A PART OF SECTIONS 33 AND 34, TOWNSHIP 5 SOUTH, RANGE 66 WEST OF THE 6TH P.M.
CITY OF AURORA, COUNTY OF ARAPAHOE, STATE OF COLORADO



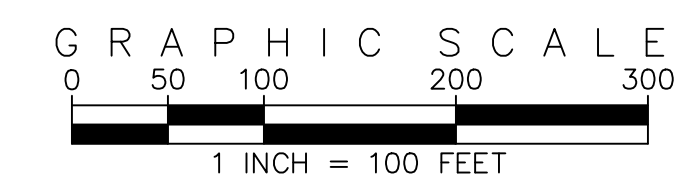
SEE SHEET 3



SEE SHEET 5



EMK CONSULTANTS, INC.
ENGINEERING/SURVEYING
LAND DEVELOPMENT
SERVICES AND SOLUTIONS
7006 SOUTH ALTON WAY, BLDG. F
CENTENNIAL, COLORADO 80112-2019
(303)694-1520 www.EMKC.com



DEVELOPER
KINGSPPOINT LLC
c/o CASTLE ROCK DEVELOPMENT COMPANY
3033 E FIRST AVENUE, SUITE 410
DENVER, COLORADO 80206
PHONE: (303) 394-5525
CONTACT: BRUCE STOKES

PRELIMINARY GRADING PLAN
KINGS POINT FILING
NO. 1 CONTEXTUAL SITE PLAN
PREPARED: 03.15.17
REVISED: 06.15.17
SHEET 6 OF 6

EMK JOB No. 12187.17