



LSC TRANSPORTATION CONSULTANTS, INC.

1889 York Street
Denver, CO 80206
(303) 333-1105
FAX (303) 333-1107
E-mail: lsc@lscdenver.com

August 16, 2019

Ms. Camille Courtney
AMH Development
3131 S. Vaughn Way, Suite 220
Aurora, CO 80014

Re: Sterling Hills
Traffic Memorandum
Aurora, CO
LSC #190890

Dear Ms. Courtney:

Per your request, we have completed this trip generation report for Sterling Hills development in Aurora, Colorado. Figure 1 shows the vicinity map.

The site is proposed to include 67 single-family dwelling units. Figure 2 shows the conceptual site and circulation plan.

Table 1 shows the estimated average weekday, morning peak-hour, and afternoon peak-hour trip generation potential for the site based on rates from Trip Generation, 10th Edition, 2017 by the Institute of Transportation Engineers (ITE).

The site is projected to generate about 632 vehicle-trips on the average weekday, with about half entering and half exiting the site during a 24-hour period. During the morning peak-hour, which generally occurs for one hour between 6:30 and 8:30 a.m., about 12 vehicles would enter and about 37 vehicles would exit the site. During the afternoon peak-hour, which generally occurs for one hour between 4:00 and 6:30 p.m., about 42 vehicles would enter and about 25 vehicles would exit the site.

Traffic calming measures should be considered to better accommodate pedestrians. A reasonable approach would be to provide curb bump-outs at one or more intersection locations to shelter on-street parking and reduce walk distances across intersections.

* * *

We trust this information will assist you in planning for the Sterling Hills development.

Respectfully submitted,

LSC Transportation Consultants, Inc.

By: 

Christopher S. McGranahan, P.E., PTOE



CSM/wc

8-16-19

Enclosure: Table 1
Figures 1 and 2

Table 1
ESTIMATED TRAFFIC GENERATION
Sterling Hills
Aurora, CO
(LSC #190890; August, 2019)

Trip Generating Category	Quantity	Trip Generation Rates ⁽¹⁾					Vehicle - Trips Generated				
		Average Weekday	AM Peak-Hour		PM Peak-Hour		Average Weekday	AM Peak-Hour		PM Peak-Hour	
		In	Out	In	Out	In	Out	In	Out	In	Out
CURRENTLY PROPOSED LAND USE											
Single-Family Housing ⁽²⁾	67 DU ⁽³⁾	9.44	0.185	0.555	0.624	0.366	632	12	37	42	25

Notes:

(1) Source: *Trip Generation*, Institute of Transportation Engineers, 10th Edition, 2017.

(2) ITE Land Use No. 210 - Single-Family Detached Housing

(3) DU = Dwelling Unit

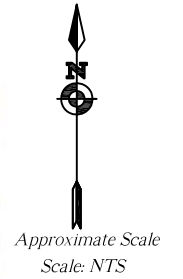
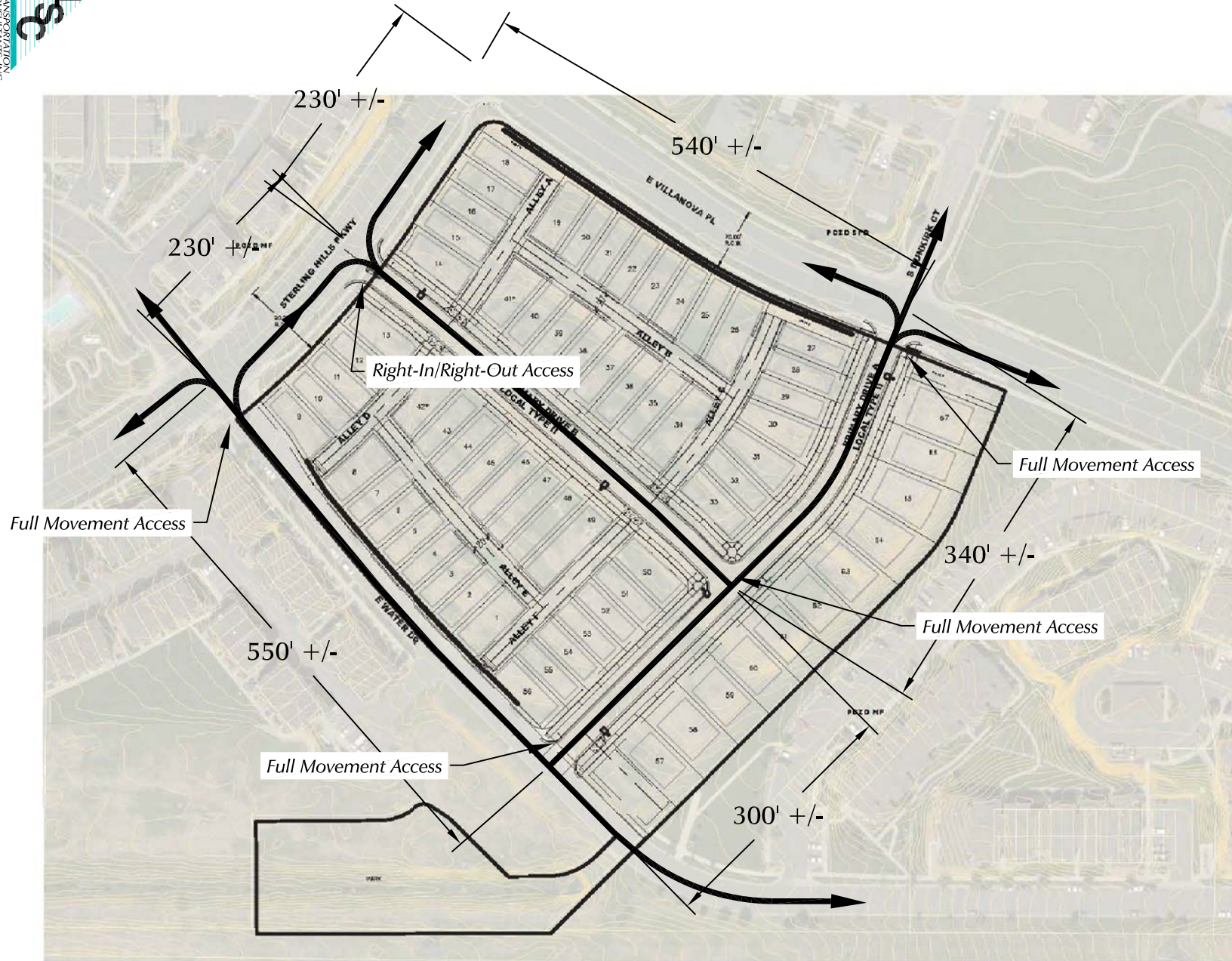


Figure 2
Site Plan

Sterling Hills (LSC #190890)