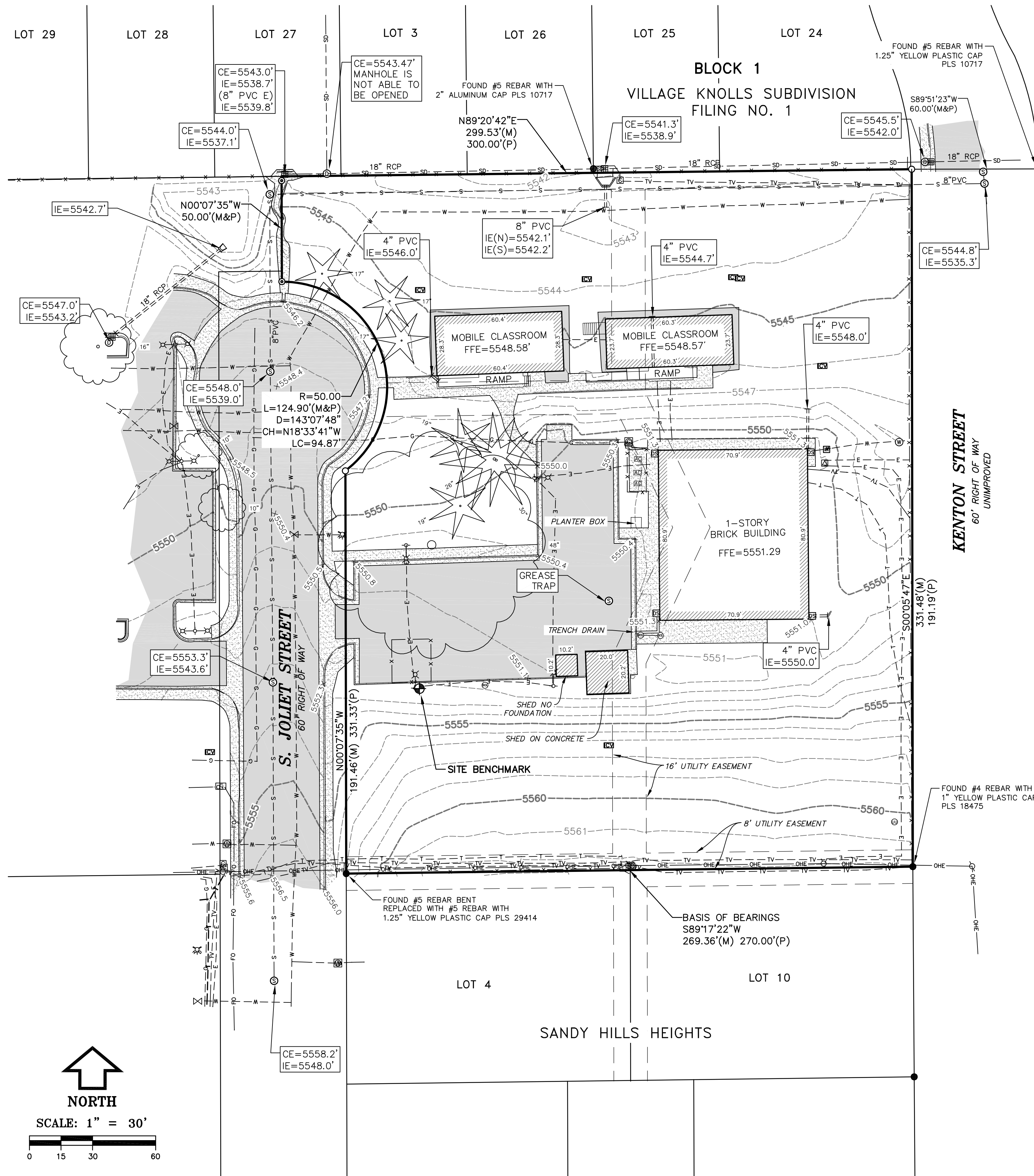


**LEGEND**

- FOUND MONUMENT AS DESCRIBED
- SET #5 REBAR AND 1.25" YELLOW PLASTIC CAP, EHRHART PLS 29414
- ⊙ SET NAIL & 1" BRASS DISK, EHRHART PLS 29414  
— UNLESS NOTED OTHERWISE
- ⊕ BENCHMARK
- WC WITNESS CORNER
- (P) PLATTED DISTANCE
- (M) MEASURED DISTANCE
- FFE FINISH FLOOR ELEVATION
- CE MANHOLE COVER ELEVATION
- IE INVERT ELEVATION
- X5107.3 SPOT ELEVATION
- ⌂ DRAIN INLET
- ⌂ FLARED END SECTION
- ⌂ CULVERT
- ⌂ FIRE HYDRANT
- ⌂ WATER VALVE
- ⌂ STORM MANHOLE
- ⌂ WATER MANHOLE
- ⌂ SANITARY MANHOLE
- ⌂ GAS METER
- ⌂ WATER METER
- ⌂ ELECTRIC METER
- ⌂ CABLE TV PEDESTAL/PULL BOX
- ⌂ TELEPHONE PEDESTAL/PULL BOX
- ⌂ FIBER OPTIC PEDESTAL/PULL BOX
- ⌂ ELECTRIC PEDESTAL/PULL BOX
- ⌂ ELECTRICAL TRANSFORMER
- ⌂ DRAIN SPOUT
- T- UNDERGROUND TELEPHONE
- FO- FIBEROPTIC LINE
- TV- CABLE TV LINE
- G- GAS LINE
- W- WATER LINE
- E- UNDERGROUND ELECTRIC LINE
- OHE- OVERHEAD ELECTRIC LINE
- S- SANITARY LINE
- SD- STORM LINE
- X- FENCE
- ⌂ STREET LIGHT POLE
- ⌂ POWER POLE
- ⌂ CONIFEROUS TREE
- ⌂ DECIDUOUS TREE
- ⌂ IRRIGATION CONTROL VALVE
- ⌂ IRRIGATION RISER
- ⌂ SIGN
- ⌂ BOLLARD
- ⌂ AIR CONDITIONER
- ⌂ UNKNOWN RISER/UTILITY
- ASPHALT
- CONCRETE
- BUILDING



**NOTES:**

- 1) THIS SURVEY WAS PREPARED FOR THE EXCLUSIVE USE OF PERSONS NAMED IN THE STATEMENT HEREON. SAID STATEMENT DOES NOT EXTEND TO ANY UNNAMED PERSON WITHOUT AN EXPRESS STATEMENT BY THE SURVEYOR NAMING SAID PERSON.
- 2) LINEAL UNITS USED ARE U.S. SURVEY FEET.
- 3) BASIS OF BEARINGS: THE SOUTH LINE OF THE SUBJECT PROPERTY, BEARING S89°17'22"W (ASSUMED), A DISTANCE OF 269.36 FEET, MONUMENTED AS SHOWN HEREON.
- 4) BENCHMARK: NGS "A 408"—PID: KK1499 — STEEL ROD IN MONUMENT WELL. ELEV=5562.32' (NAVD88—GEOID18)  
  
SITE BENCHMARK: CP-98 "X" IN CONCRETE CURB, LOCATED EAST OF JOLIET STREET AS SHOWN HEREON. ELEV=5552.17' (NAVD88—GEOID18)
- 5) UTILITY LOCATIONS AND PIPE SIZES SHOWN ARE FROM VISIBLE SURFACE EVIDENCE AND LOCATES BY OTHERS. THIS OFFICE CANNOT ACCEPT RESPONSIBILITY FOR THE ACCURACY OF THE UNDERGROUND IMPROVEMENTS SHOWN HEREON. FOR SPECIFIC LOCATIONS DURING CONSTRUCTION CALL THE UTILITY NOTIFICATION CENTER OF COLORADO AT 1-800-922-1987.
- 6) ALL RIGHT-OF-WAY AND LOT AND BLOCK INFORMATION WAS TAKEN FROM THE PLAT OF SANDY HILLS HEIGHTS, RECORDED NOVEMBER 5, 1963 AT RECEPTION NO. 885181.
- 7) NOTICE: ACCORDING TO COLORADO LAW YOU MUST COMMENCE ANY LEGAL ACTION BASED UPON ANY DEFECT IN THIS SURVEY WITHIN THREE YEARS AFTER YOU FIRST DISCOVER SUCH DEFECT. IN NO EVENT MAY ANY ACTION BASED UPON ANY DEFECT IN THIS SURVEY BE COMMENCED MORE THAN TEN YEARS FROM THE DATE OF THE SURVEYOR'S STATEMENT SHOWN HEREON.

**ALTA/NSPS LAND TITLE SURVEY**  
**1820 S JOLIET STREET**  
**SW 1/4 SECTION 23, T4S, R67W OF THE 6TH P.M.**  
**CITY OF AURORA, ARAPAHOE COUNTY, COLORADO**

**EHRHART**  
LAND SURVEYING

P.O. Box 930 • Erie, Colorado 80516  
(303) 828-3340  
www.coloradolands.com

SHEET:  
**1 OF 1**  
DATE: 7/21/21  
DRAWN BY: JMH  
PROJECT: S215303