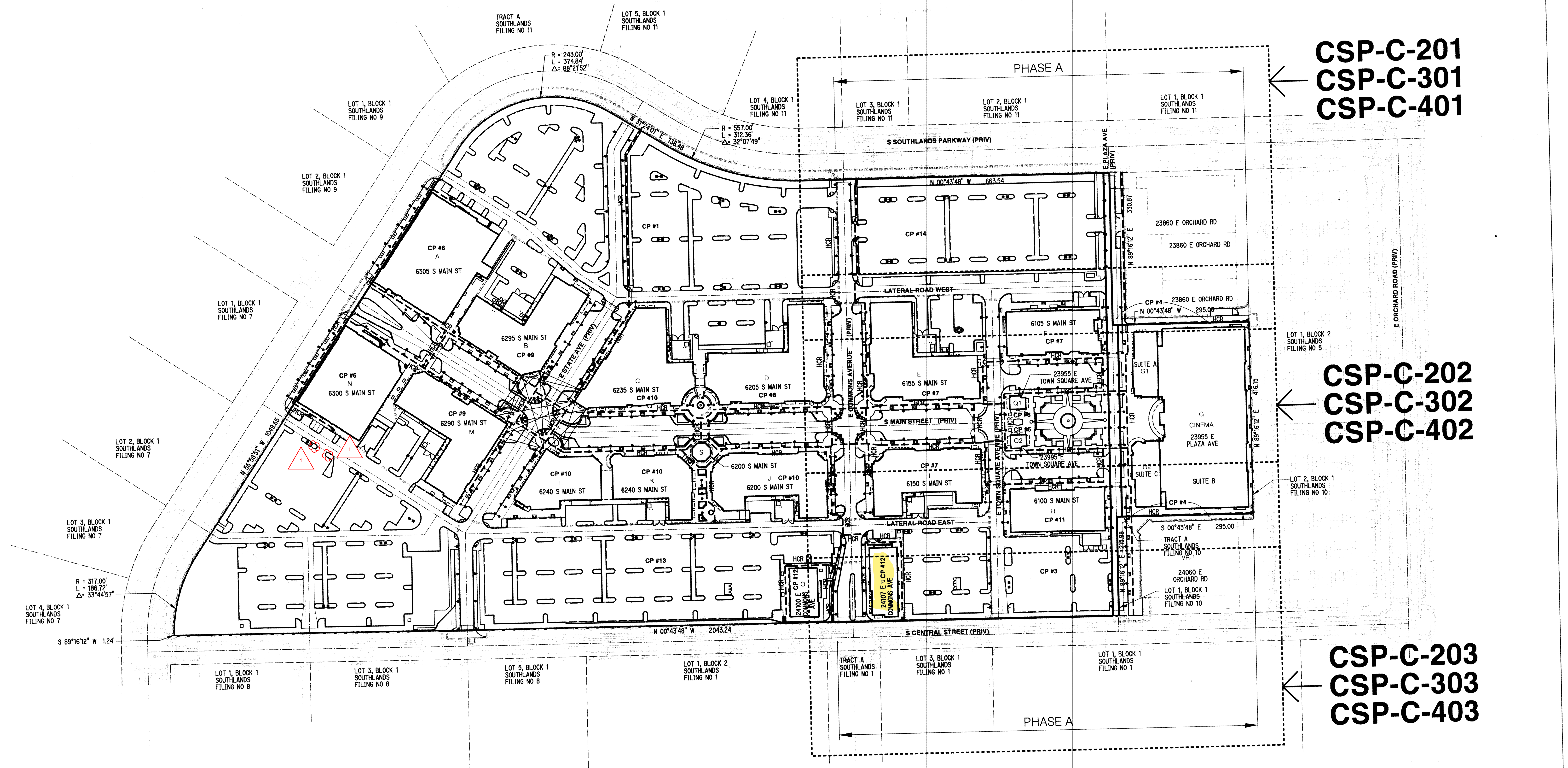


12/15/2006 11:31:39 AM JB (S:\WB\_006\Civil\01031 ES WTS Monrabit) j:\landisocivil\csp-c-111.dgn



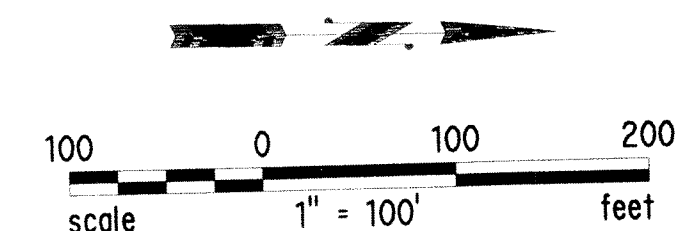
CSP-C-201  
CSP-C-301  
CSP-C-401

CSP-C-202  
CSP-C-302  
CSP-C-402

CSP-C-203  
CSP-C-303  
CSP-C-403

NOTES:

1. FOR PHASE A, THE EMERGENCY ACCESS ROUTES FOLLOW EAST COMMONS AVENUE IN THE EAST-WEST DIRECTION. IT ALSO LOOPS FROM EAST COMMONS AVENUE TO THE NORTH ALONG THE LATERAL ROADS, LOOPING AROUND EAST TOWN SQUARE AVENUE, EAST PLAZA AVENUE AND THE NORTH SIDE OF CINEMA IN THE EAST-WEST DIRECTION FROM SOUTH SOUTHLANDS PARKWAY TO SOUTH CENTRAL STREET PROVIDE EMERGENCY ACCESS ACROSS THE NORTH OF PHASE A.
2. FOR PHASE A, WATER SUPPLY LOOPING IS PROPOSED ALONG EAST COMMONS AVENUE AND EAST PLAZA AVENUE CONNECTING TO THE WATER MAINS ON SOUTH SOUTHLANDS PARKWAY AND SOUTH CENTRAL STREET. ADDITIONAL WATER SUPPLY LOOPING IS PROPOSED FROM EAST COMMONS AVENUE NORTH ALONG BOTH LATERAL ROADS AND AROUND EAST TOWN SQUARE AVENUE.



CONSULTANT:  
**MAGNUSSON KLEMENCIC ASSOCIATES**  
Structural & Civil Engineers  
1301 Fifth Avenue, Suite 3200  
Seattle, Washington 98101-2699  
T: 206 292 1200 F: 206 292 1201  
www.mka.com

OWNER:  
**ALBERTA DEVELOPMENT PARTNERS**  
5460 South Quebec Street, Suite 210  
Englewood, CO 80111  
T: 303 771 4004  
F: 303 771 4086  
www.albdev.com/

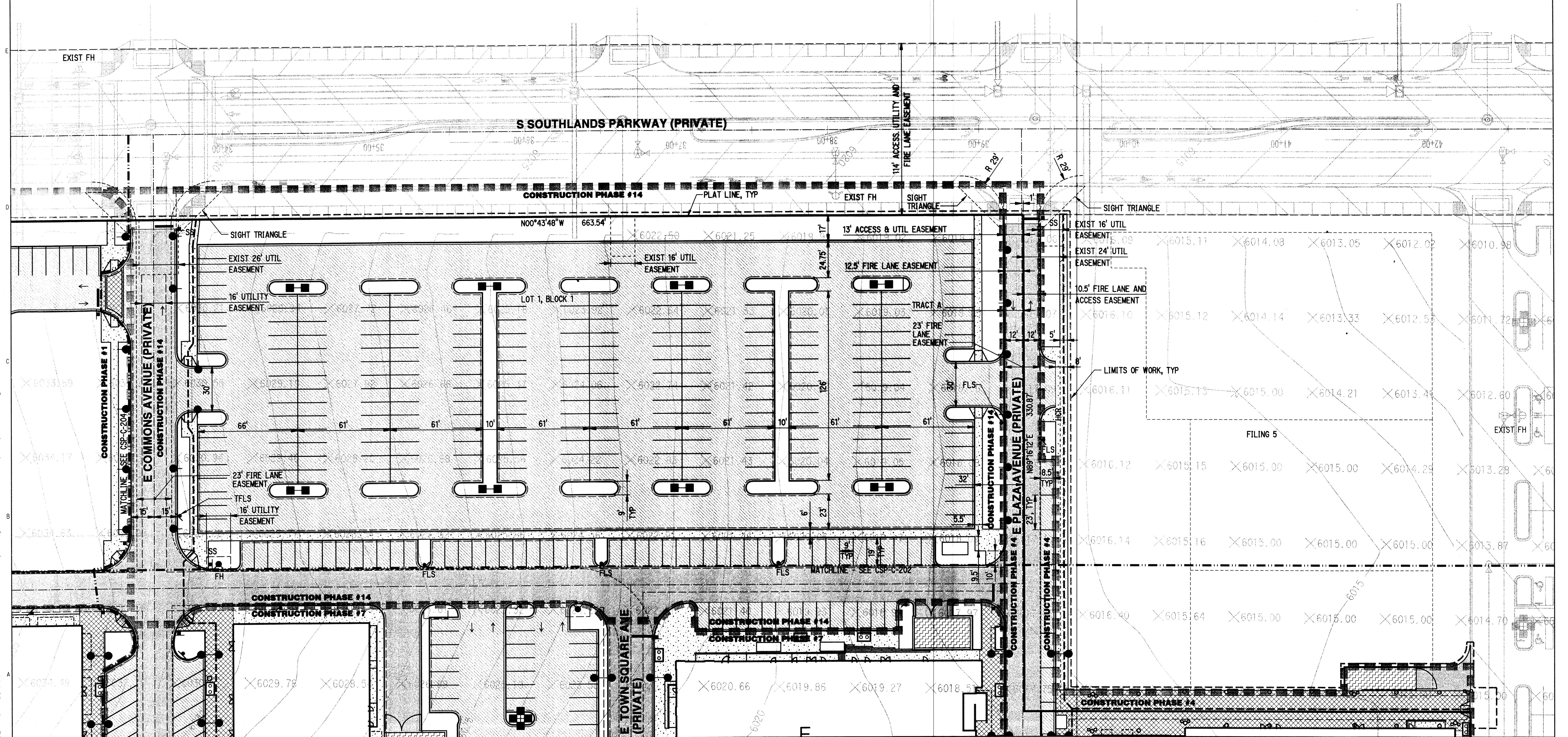
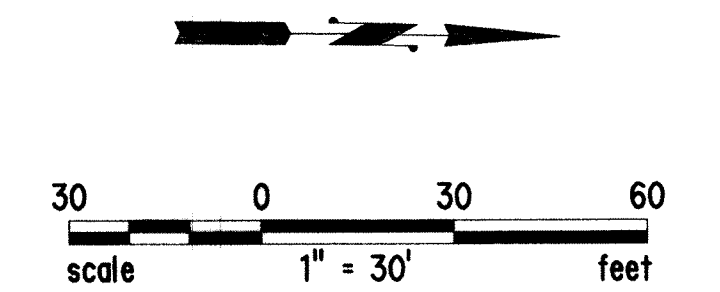
**CALLISON**  
CALLISON ARCHITECTURE, INC.  
1420 Fifth Avenue #2400  
Seattle, Washington 98101-2343  
T: 206 623 4646  
F: 206 623 4625  
www.callison.com

**SOUTHLANDS**  
LIFESTYLE CENTER, PHASE A  
E-470 and Smoky Hill Road  
Aurora, CO 80012  
PROJECT # 203183.00

ISSUED / REVISED	DATE	
CSP SUBMITTAL #2	1/06/05	SOUTHLANDS CONTEXTUAL SITE PLAN FILING #11 APPLICATION PHASE A OCTOBER 15, 2004
CSP SUBMITTAL #3	2/15/05	
CSP SUBMITTAL #4	3/17/05	
CSP SUBMITTAL #5	4/19/05	
CSP SUBMITTAL #6	3/10/06	
CSP SUBMITTAL #7	4/12/06	
CSP SUBMITTAL #8	12/15/06	
2022-07-27 MA: INSTALL ELECTRIC VEHICLE CHARGING STATION (LEVEL 2)		
		KEY PLAN
		<b>CSP-C-111</b>
		<b>SOUTHLANDS LIFESTYLE CENTER AT SOUTHLANDS CSP NO 11 2004-6074-01</b>



NOTES:  
1. SEE SHEET CSP-C-102 FOR LEGEND AND ABBREVIATIONS.



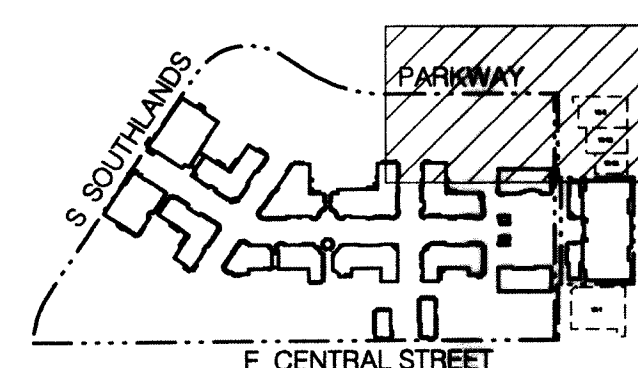
CONSULTANT:

**MAGNUSSON  
KLEMENCIC  
ASSOCIATES**

Structural + Civil Engineers  
1301 Fifth Avenue, Suite 3200  
Seattle Washington 98101-2699  
T: 206 292 1200 F: 206 292 1201  
www.mka.com



OWNER:  
ALBERTA DEVELOPMENT PARTNERS  
5460 South Quebec Street, Suite 210  
Englewood, CO 80111  
T 303 771 4004  
F 303 771 4086  
www.albdev.com/



KEY MAP



CALLISON ARCHITECTURE, INC.  
1420 Fifth Avenue #2400  
Seattle, Washington 98101-2343  
T 206 623 4646  
F 206 623 4625  
www.callison.com

**SOUTHLANDS**  
LIFESTYLE CENTER, PHASE A  
E-470 and Smoky Hill Road  
Aurora, CO 80012

PROJECT # 203183.00

ISSUED / REVISED	DATE
CSP SUBMITTAL #2	1/06/05
CSP SUBMITTAL #3	2/16/05
CSP SUBMITTAL #4	3/17/05
CSP SUBMITTAL #5	4/19/05
CSP SUBMITTAL #6	3/10/06
CSP SUBMITTAL #7	4/12/06
CSP SUBMITTAL #8	12/15/06

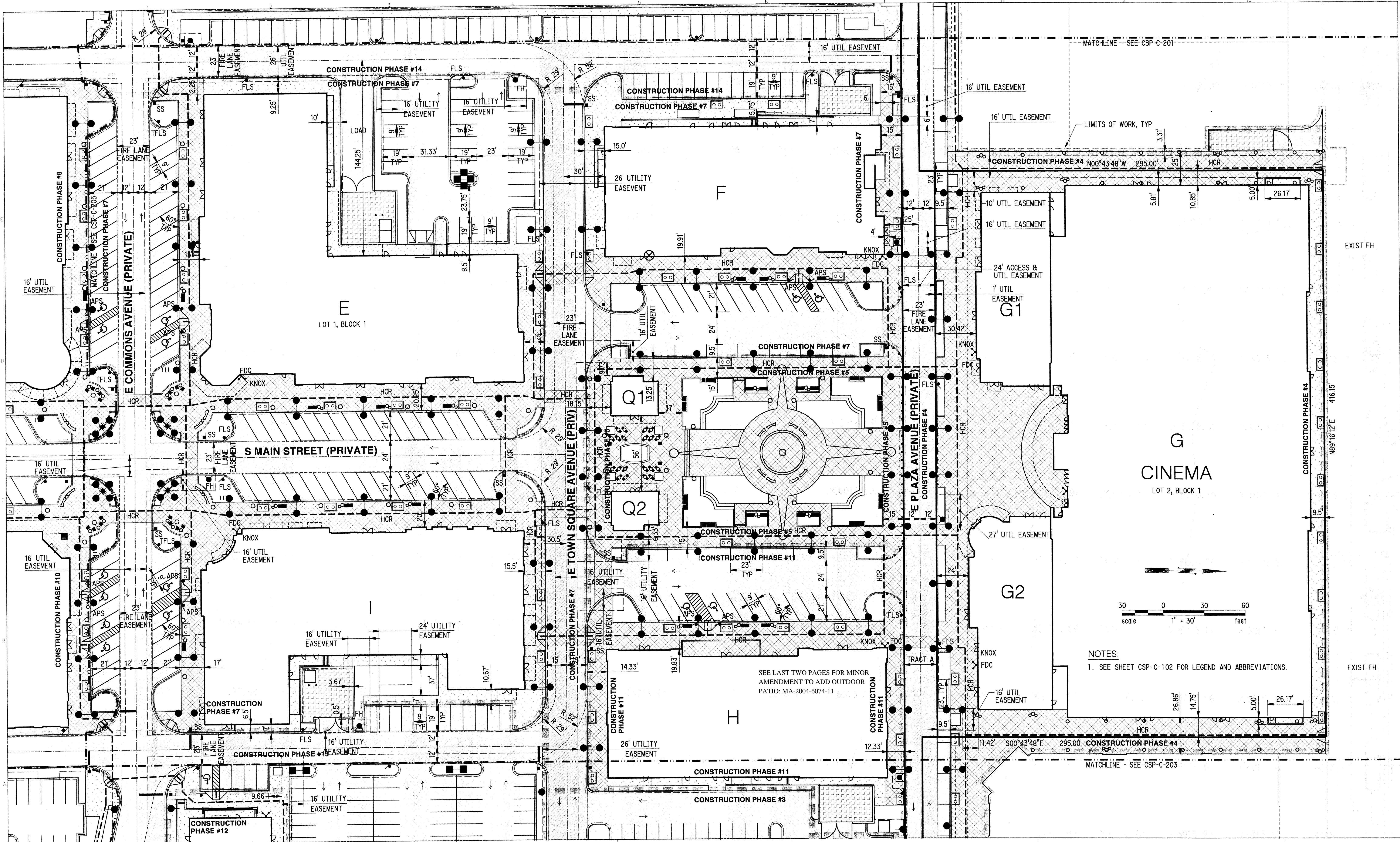
SOUTHLANDS CONTEXTUAL  
SITE PLAN FILING #11  
APPLICATION PHASE A  
OCTOBER 15, 2004

SITE PLAN

**CSP-C-201**

SOUTHLANDS LIFESTYLE CENTER AT SOUTHLANDS CSP NO 11 2004-6074-01





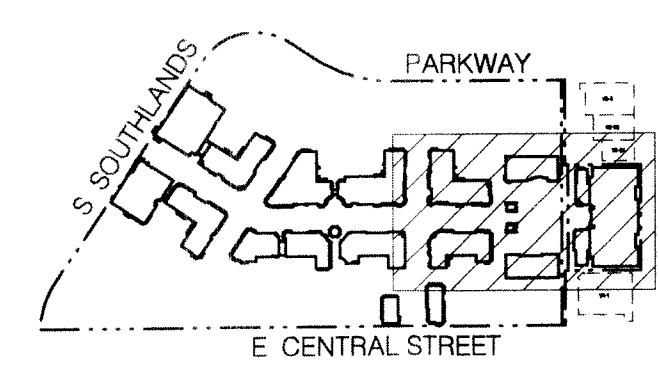
NOTES:  
1. SEE SHEET CSP-C-102 FOR LEGEND AND ABBREVIATIONS.

MAGNUSSON  
KLEMENCIC  
ASSOCIATES

CONSULTANT:  
Structural + Civil Engineers  
1301 Fifth Avenue, Suite 3200  
Seattle, Washington 98101-2699  
T: 206 292 1200 F: 206 292 1201  
www.mka.com



OWNER:  
ALBERTA DEVELOPMENT PARTNERS  
5460 South Quebec Street, Suite 210  
Englewood, CO 80111  
T: 303 771 4004  
F: 303 771 4086  
www.albdev.com/



KEY MAP



CALLISON ARCHITECTURE, INC.  
1420 Fifth Avenue #2400  
Seattle, Washington 98101-2343  
T: 206 623 4646  
F: 206 623 4625  
www.callison.com



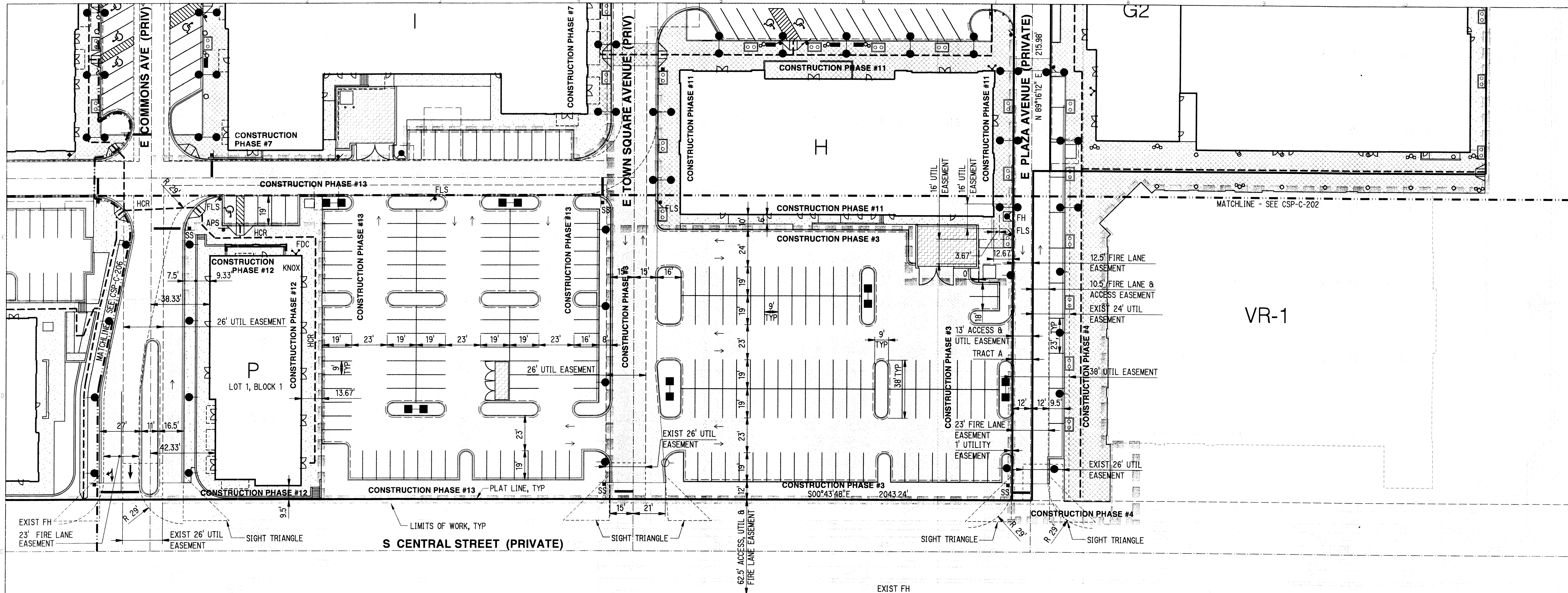
LIFESTYLE CENTER, PHASE A  
E-470 and Smoky Hill Road  
Aurora, CO 80012

PROJECT # 203183.00

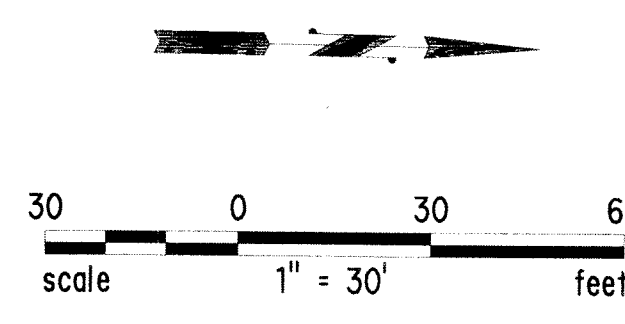
ISSUED / REVISED	DATE	
CSP SUBMITTAL #2	1/06/05	SOUTHLANDS CONTEXTUAL
CSP SUBMITTAL #3	2/15/05	SITE PLAN FILING #11
CSP SUBMITTAL #4	3/17/05	APPLICATION PHASE A
CSP SUBMITTAL #5	4/19/05	OCTOBER 15, 2004
CSP SUBMITTAL #6	3/10/06	
CSP SUBMITTAL #7	4/12/06	
CSP SUBMITTAL #8	12/15/06	

SITE PLAN





NOTES:  
1. SEE SHEET CSP-C-102 FOR LEGEND AND ABBREVIATIONS.



CONSULTANT:

**MAGNUSSON KLEMENCIC ASSOCIATES**

Structural & Civil Engineers  
1301 Fifth Avenue, Suite 3200  
Seattle, Washington 98101-2699  
T: 206 292 1200 F: 206 292 1201  
www.mka.com

OWNER:

**ALBERTA DEVELOPMENT PARTNERS**

5460 South Quebec Street, Suite 210  
Englewood, CO 80111  
T 303 771 4004  
F 303 771 4086  
www.albdev.com/

**KEY MAP**

**CALLISON**

CALLISON ARCHITECTURE, INC.  
1420 Fifth Avenue #2400  
Seattle, Washington 98101-2343  
T 206 623 4646  
F 206 623 4625  
www.callison.com

**SOUTHLANDS**

LIFESTYLE CENTER, PHASE A  
E-470 and Smoky Hill Road  
Aurora, CO 80012

PROJECT # 203183.00

ISSUED / REVISED	DATE
CSP SUBMITTAL #2	1/06/05
CSP SUBMITTAL #3	2/15/05
CSP SUBMITTAL #4	3/17/05
CSP SUBMITTAL #5	4/19/05
CSP SUBMITTAL #6	3/10/06
CSP SUBMITTAL #7	4/12/06
CSP SUBMITTAL #8	12/15/06

SOUTHLANDS CONTEXTUAL SITE PLAN FILING #11 APPLICATION PHASE A OCTOBER 15, 2004

SITE PLAN

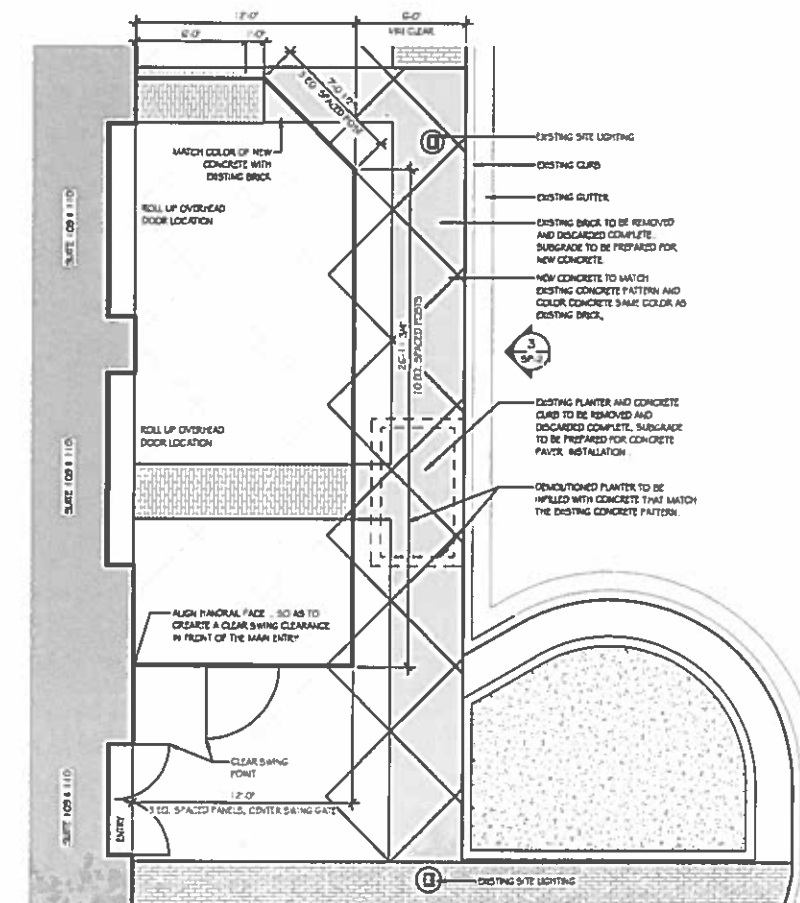
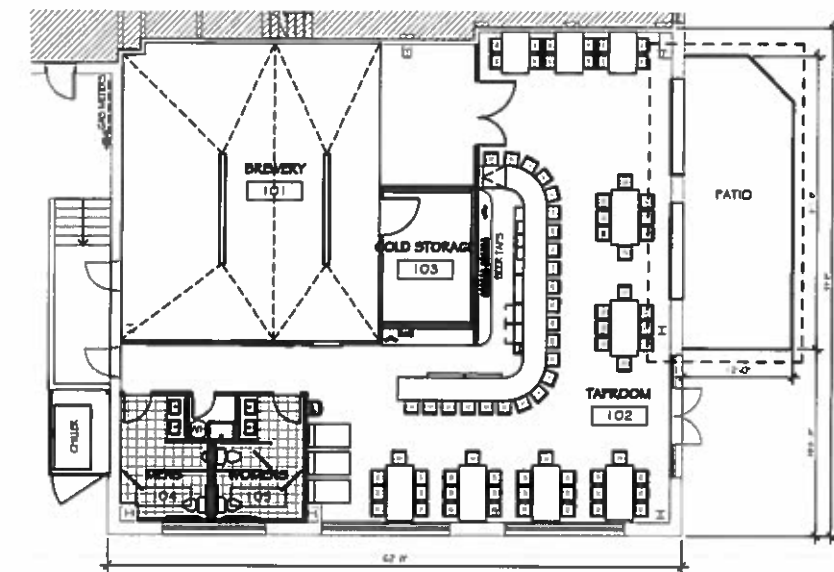
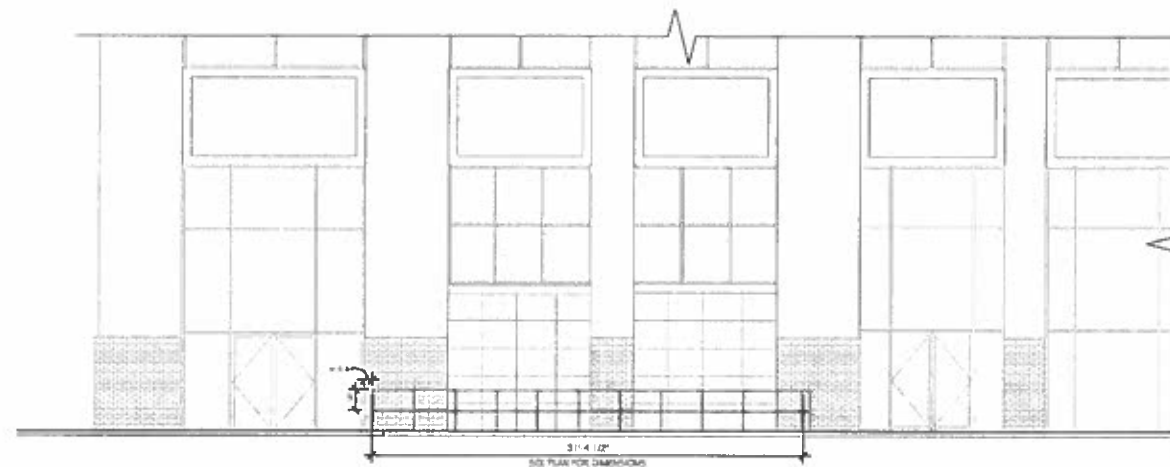
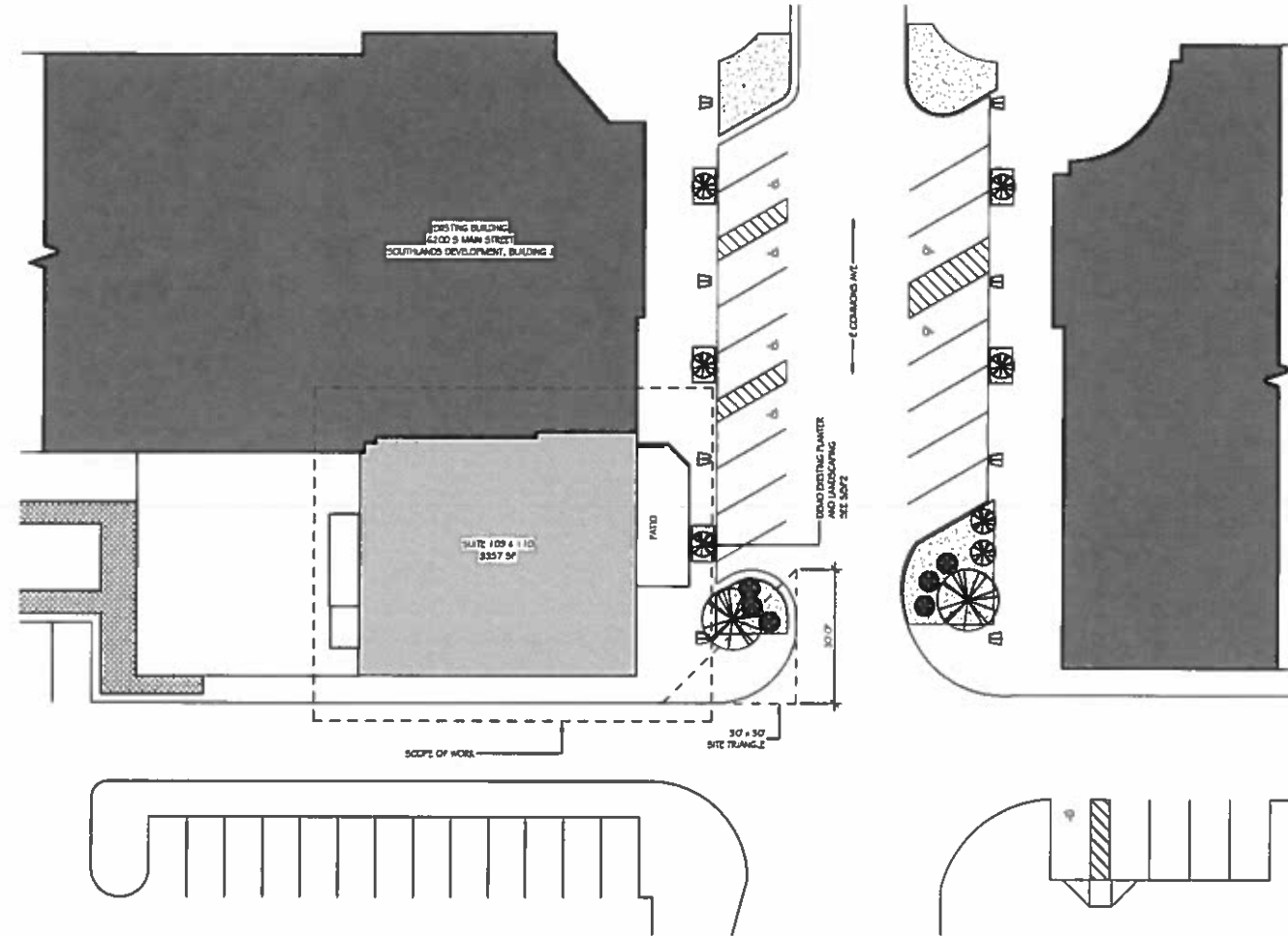
**CSP-C-203**

SOUTHLANDS LIFESTYLE CENTER AT SOUTHLANDS CSP NO. 11 2004-6074-01









**ARCWEST**  
ARCHITECTS

1625 Raleigh St. Suite 328 Denver, CO 80211  
ARROWEST ASSURANCE CO. 303-455-7741

**BENT BARLEY BREWERY**  
**MINOR SITE PLAN AMENDMENT**  
**6200 S MAIN ST. SUITE 109 & 110, AURCO**

[illegible]

SHEET ISSUE DATE:  
08/15/19  
PROJ. NO. 18005

**SHEET TITLE:**  
**PATIO ZONING**

SHEET NUMBER:

SP-2

**SOUTHLANDS CSP NO. 11 2004-6074-14**