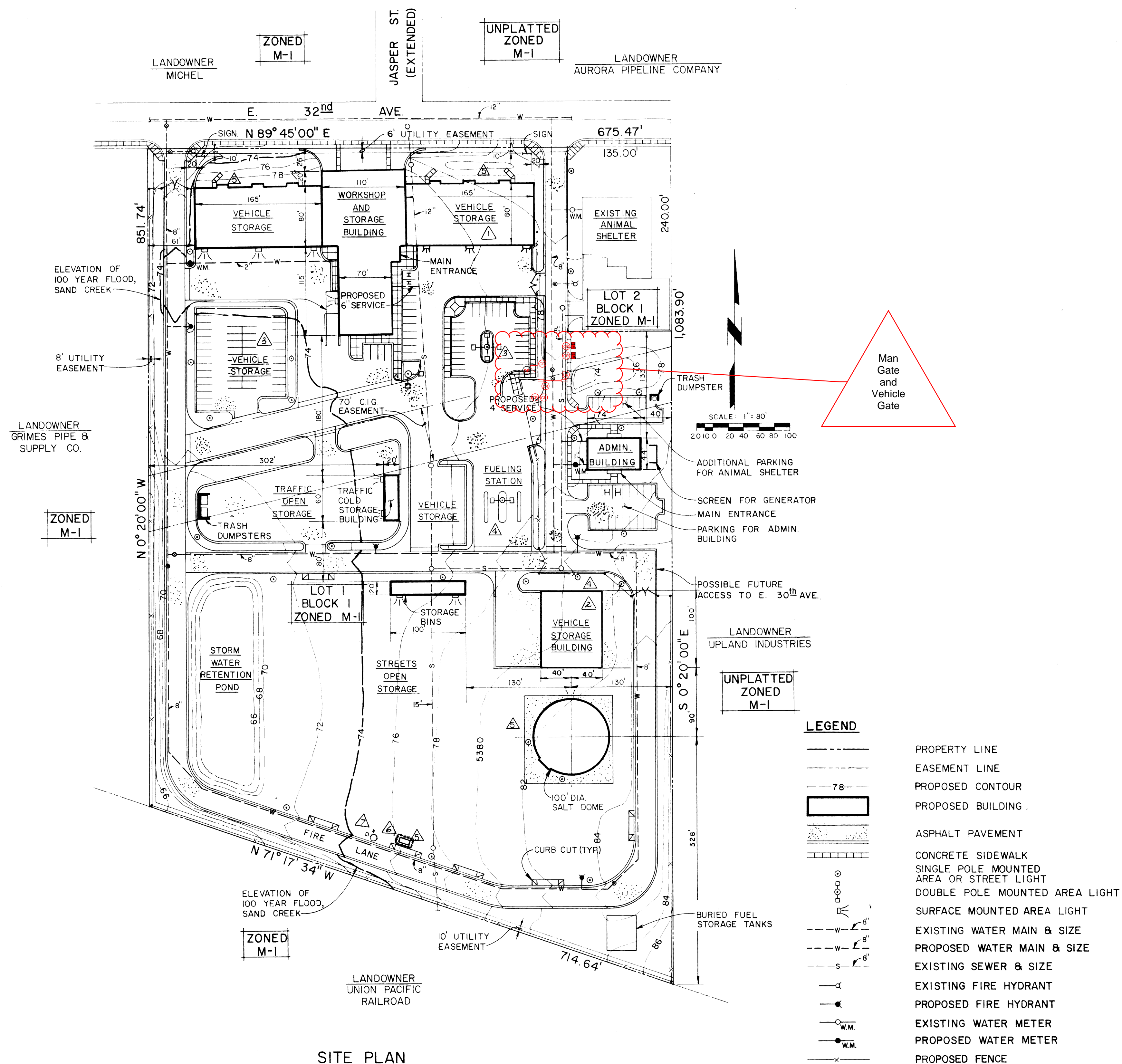


NORTH SATELLITE FACILITY PLANNED BUILDING GROUP



SITE PLAN

ADMINISTRATIVE AMENDMENT, JULY 22, 1985

- △ Revise Light Pole Locations
- △ Add Curb Cuts, Asphalt Pad At Salt Dome And Revise Walks

- △ ADMINISTRATIVE AMENDMENT 2/1/91. ADD 16' L x 8' W x 8' H HAZARDOUS STORAGE BUILDING FOR TEMPORARY STORAGE OF HAZARDOUS WASTES. INSTALL 6' HIGH CHAIN LINK FENCE AROUND BUILDING FOR SECURITY.
- ADM AMDT. 2-14-92
- △ ADD PREWETTING FACILITY FOR SALT AND SAND OPERATION.

DATA

1. GENERAL:

TOTAL LAND AREA = 14.27 ACRES
TOTAL GROSS FLOOR AREA = 26,200 SQ.FT.
TOTAL FLOOR SPACE (6 STRUCTURES) = 78,600 SQ.FT.
TOTAL BUILDING COVERAGE = 10.9% (67,790 SQ.FT.)
TOTAL HARD SURFACE AREA = 68.5% (425,800 SQ.FT.)
TOTAL LANDSCAPED AREA = 20.6% (127,920 SQ.FT.)

2. OFF-STREET PARKING:

ADMINISTRATION BUILDING

GROSS FLOOR AREA = 4,900 SQ.FT.
REQUIRED PARKING SPACES = 17
(BASED ON ONE PER 300 SQ.FT. OF GROSS FLOOR AREA)
PARKING SPACES PROVIDED = 27 (37% COMPACT)
(THE "ADDITIONAL PARKING" AREA WILL ALSO)
(SERVE THE EXISTING ANIMAL SHELTER)

WORKSHOP AND STORAGE BUILDING
GROSS FLOOR AREA = 21,300 SQ.FT.
REQUIRED PARKING SPACES = 71
(BASED ON ONE PER 300 SQ.FT. OF GROSS FLOOR AREA)
SPACES PROVIDED = 88 (0% COMPACT)
(THE SPACES PROVIDED ARE 30% MORE THAN THE)
(TOTAL NUMBER OF EMPLOYEES PROJECTED TO BE)
(EMPLOYED AT THE SITE IN 1990, ACCORDING TO THE 1981)
(MASTER SITE PLAN)

GENERAL NOTES

- ALL ROOF-TOP MECHANICAL UNITS SHALL BE SCREENED FROM VIEW WITH METAL FACIA PANELS, COLORED TO BLEND WITH BRICK AND WALL PANELS, CONTINUOUS AROUND THE PERIMETER OF EACH BUILDING.
- SIGNS ALONG EAST 32ND AVENUE SHALL CONFORM TO THE CITY OF AURORA SIGN CODE AND SHALL BE AS DETAILED HEREON.
- THE APPROVAL OF THIS DOCUMENT DOES NOT CONSTITUTE FINAL APPROVAL OF GRADING, DRAINAGE, UTILITY, PUBLIC IMPROVEMENTS AND BUILDING PLANS. CONSTRUCTION PLANS MUST BE REVIEWED AND APPROVED BY THE APPROPRIATE DEPARTMENTS PRIOR TO THE ISSUANCE OF BUILDING PERMITS.
- RIGHT-OF-WAY FOR INGRESS AND EGRESS FOR SERVICE AND EMERGENCY VEHICLES IS GRANTED OVER, ACROSS, ON AND THROUGH ANY AND ALL PRIVATE ROADS AND WAYS NOW OR HEREAFTER ESTABLISHED ON THE DESCRIBED PROPERTY, AND THE SAME ARE HEREBY DESIGNATED AS FIRE LANES AND EMERGENCY AND SERVICE VEHICLE ROADS, AND SHALL BE POSTED "NO PARKING - FIRE LANE".
- ALL LANDSCAPING SHALL BE INSTALLED PRIOR TO ISSUANCE OF CERTIFICATE OF OCCUPANCY.
- THE DEVELOPER, HIS SUCCESSORS AND ASSIGNS, SHALL BE RESPONSIBLE FOR INSTALLATION, MAINTENANCE AND REPLACEMENT OF ALL LANDSCAPING MATERIALS SHOWN OR INDICATED ON THE APPROVED LANDSCAPE PLAN ON FILE IN THE PLANNING DEPARTMENT.
- TRASH DUMPSTERS SHALL BE SCREENED FROM VIEW USING BRICK SCREENS AS SHOWN IN ELEVATION ON THE PLANS ON FILE IN THE PLANNING DEPARTMENT.
- YARD LIGHTING SHOWN SHALL BE RECESSED LAMPS WITH CUTOFF TYPE HOUSING TO ELIMINATE GLARE WHEN VIEWED FROM SURROUNDING AREAS.
- ALL COMPACT PARKING SPACES SHALL BE CLEARLY DESIGNATED AS SUCH.
- PERIMETER FENCE SHALL BE 6-FOOT CHAIN LINK, GALVANIZED 9 GAGE FENCING WITH 2-INCH MESH.
- THE DEVELOPER, HIS SUCCESSORS AND ASSIGNS, INCLUDING THE HOMEOWNERS ASSOCIATION, SHALL BE RESPONSIBLE FOR INSTALLATION, MAINTENANCE AND REPLACEMENT OF ALL FIRE LANE SIGNS AS REQUIRED BY THE CITY OF AURORA. SUCH SIGNS SHALL CONFORM TO SECTION 16-29 OF THE AURORA CITY CODE.

Part of the SW 1/4 of Section 29, T3S, R66W of the 6th P.M., more particularly described as follows:

Lot One, Block One, North Satellite
Subdivision Filing No. One, Adams County, Colorado

All Special Plans registered and recorded hereunder shall be binding upon the applicants therefor, their successors and assigns, shall limit and control the issuance and validity of all building permits and shall restrict and limit the construction, location, use and operation of all land and structures included within such Plans to all conditions and limitations set forth in such Plans.

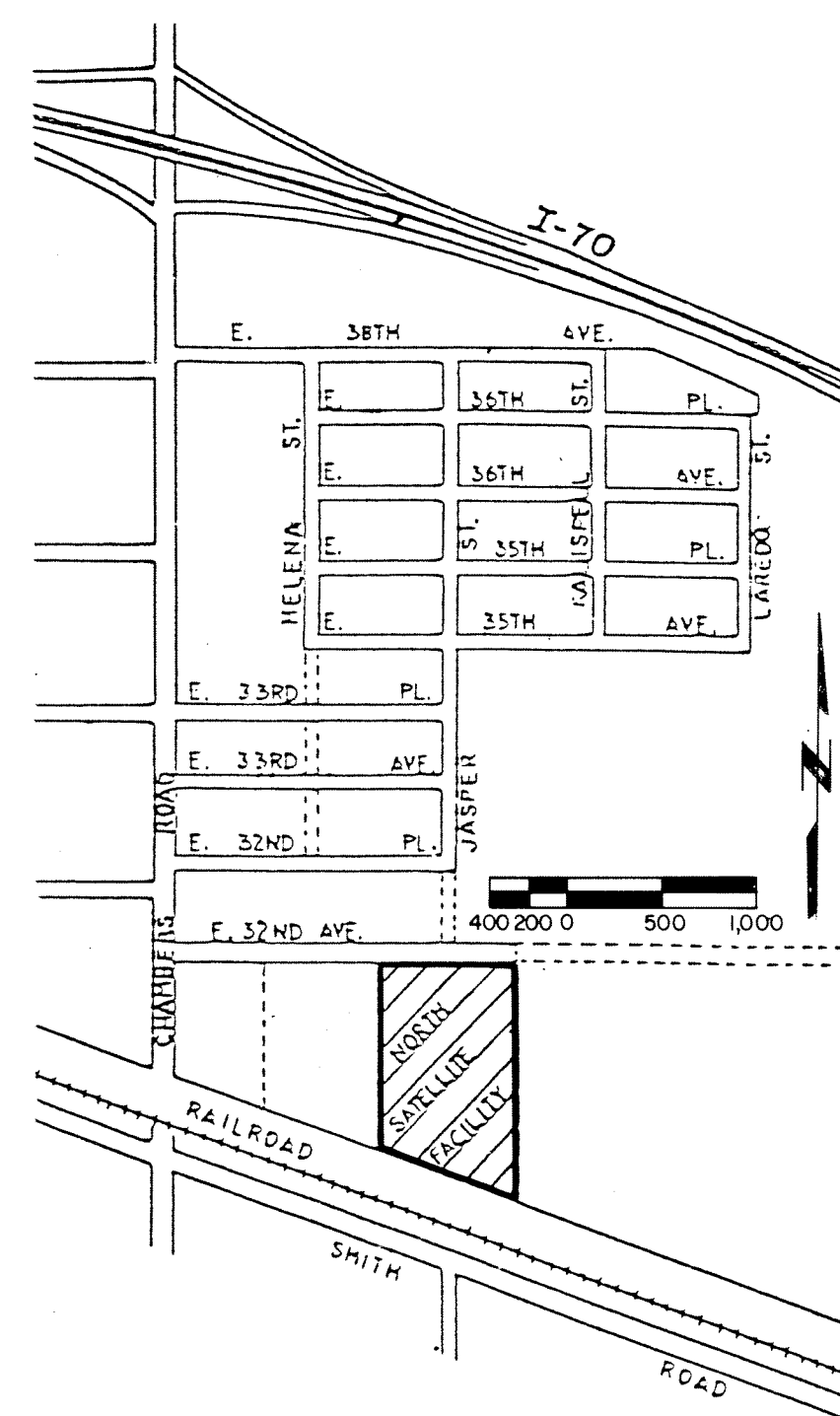
In witness thereof City of Aurora has caused these presents to be executed this 23rd day of Feb AD 1984

By: _____
(Principals or Owners)

CORPORATE
SEAL

SIGN DETAIL

1/4" = 1'-0"



VICINITY MAP

NOTARIAL:

State of Colorado) SS
County of Arapahoe)

The foregoing instrument was acknowledged before me this 23rd day of Feb AD 1984 by Barbara Champagne, Mayor
(Principals or Owners)

Witness my hand and official seal

Judith D. Nelson
Notary Public

NOTARY
SEAL

My commission expires 4-19-84
Business Address: 1470 S. Havana #820
Aurora, Co 80012

CITY OF AURORA APPROVALS:

Planning Director: Samuel L. Zlot Date: 2/23/84

ADMINISTRATIVE AMENDMENT, JANUARY 12, 1984, JULY 3, 1984

- △ Construct East Wing Workshop and Storage Building
- △ Construct New Vehicle Storage Building
- △ Revise Off-Street Parking

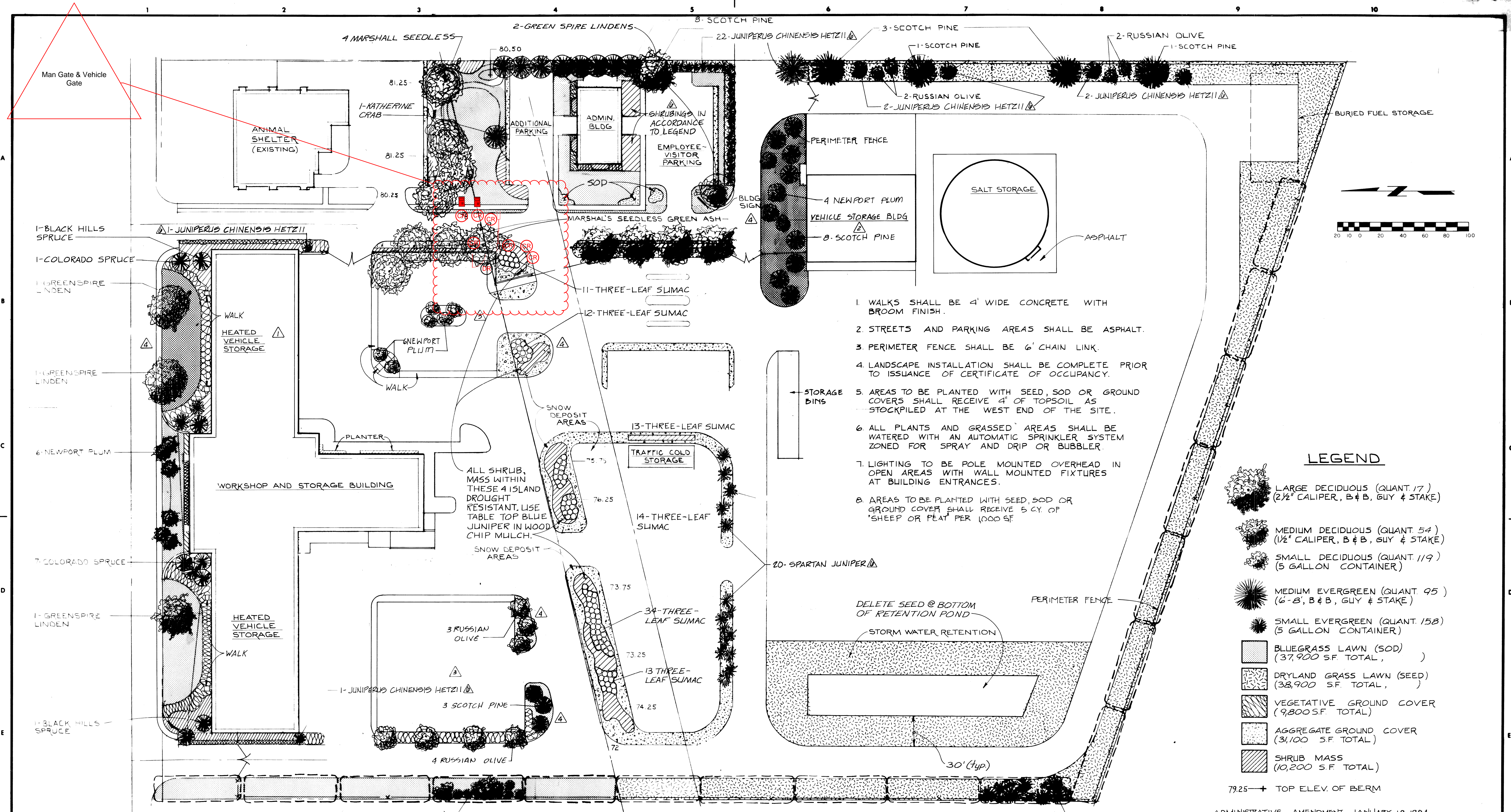
RECORDER'S CERTIFICATE:

Accepted for filing in the office of the Clerk and Recorder of Adams
County, Colorado at _____ o'clock _____ M, This _____ Day of
_____ Ad, 19____.
Clerk and Recorder: _____ Deputy: _____

C.O.A. NORTH SATELLITE FACILITY.

83-6064-2

ADM. AMTS: 7-22-85, 2/1/91, 2-14-92
1-12-84, 7-3-84



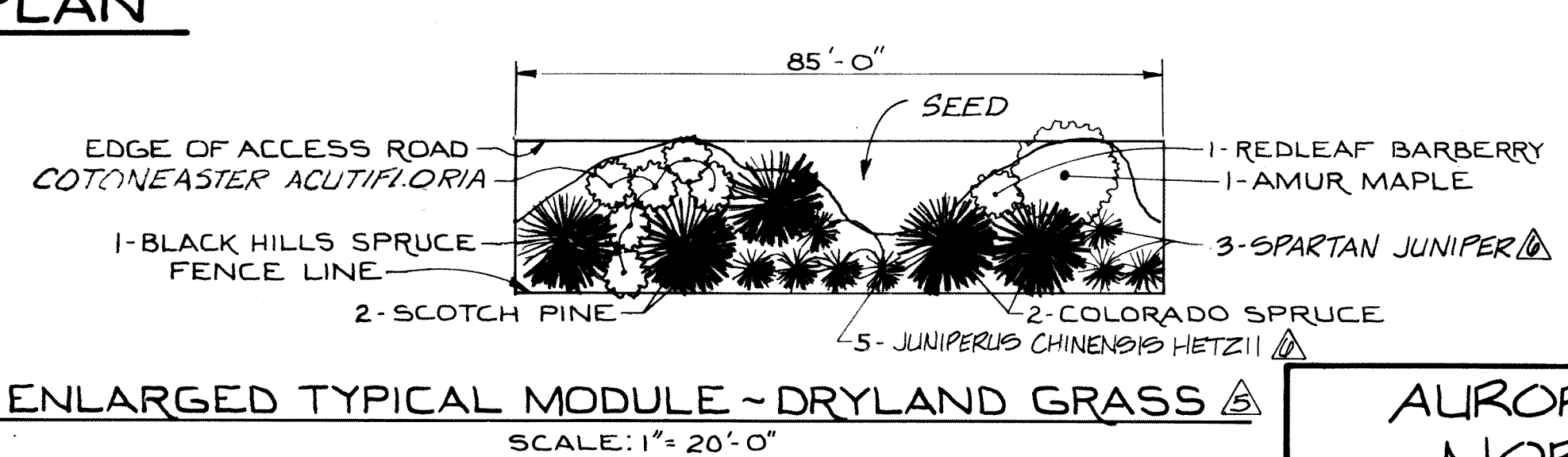
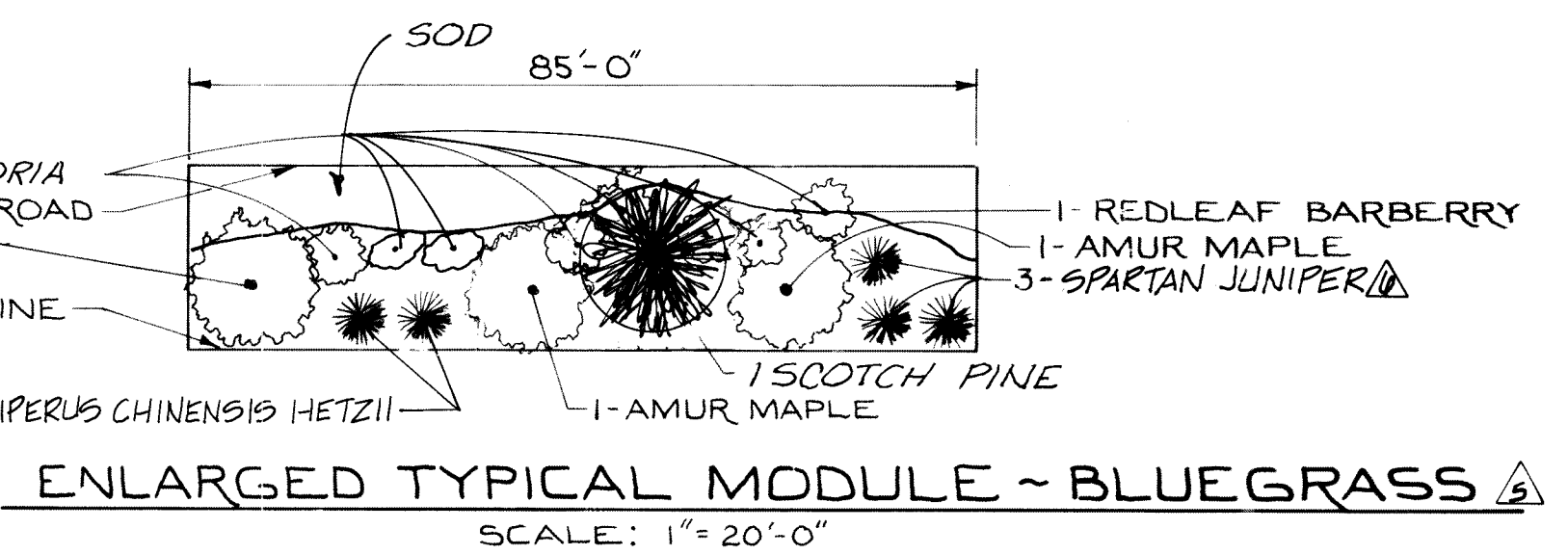
1. WALKS SHALL BE 4' WIDE CONCRETE WITH BROOM FINISH.
2. STREETS AND PARKING AREAS SHALL BE ASPHALT.
3. PERIMETER FENCE SHALL BE 6' CHAIN LINK.
4. LANDSCAPE INSTALLATION SHALL BE COMPLETE PRIOR TO ISSUANCE OF CERTIFICATE OF OCCUPANCY.
5. AREAS TO BE PLANTED WITH SEED, SOD OR GROUND COVERS SHALL RECEIVE 4" OF TOPSOIL AS STOCKPILED AT THE WEST END OF THE SITE.
6. ALL PLANTS AND GRASSED AREAS SHALL BE WATERED WITH AN AUTOMATIC SPRINKLER SYSTEM ZONED FOR SPRAY AND DRIP OR BUBBLER.
7. LIGHTING TO BE POLE MOUNTED OVERHEAD IN OPEN AREAS WITH WALL MOUNTED FIXTURES AT BUILDING ENTRANCES.
8. AREAS TO BE PLANTED WITH SEED, SOD OR GROUND COVER SHALL RECEIVE 5 CY. OF SHEEP OR PEAT PER 1000 SF.

LEGEND

- LARGE DECIDUOUS (QUANT. 17)
(2 1/2" CALIPER, B & B, GUY & STAKE)
- MEDIUM DECIDUOUS (QUANT. 54)
(1 1/2" CALIPER, B & B, GUY & STAKE)
- SMALL DECIDUOUS (QUANT. 119)
(5 GALLON CONTAINER)
- MEDIUM EVERGREEN (QUANT. 95)
(6" B, B & B, GUY & STAKE)
- SMALL EVERGREEN (QUANT. 158)
(5 GALLON CONTAINER)
- BLUEGRASS LAWN (SOD)
(37,900 SF. TOTAL)
- DRYLAND GRASS LAWN (SEED)
(38,900 SF. TOTAL)
- VEGETATIVE GROUND COVER
(9,800 SF. TOTAL)
- AGGREGATE GROUND COVER
(31,100 SF. TOTAL)
- SHRUB MASS
(10,200 SF. TOTAL)

79.25 - TOP ELEV. OF BERM

LANDSCAPING PLAN



- ADMINISTRATIVE AMENDMENT, JANUARY 12, 1984
- 1. CONSTRUCT EAST WING WORKSHOP & STORAGE BUILDING
 - 2. CONSTRUCT NEW VEHICLE STORAGE BUILDING
 - 3. REVISE OFF-SITE PARKING
 - 4. REVISE LANDSCAPE PLAN ACCORDINGLY
- ADMINISTRATIVE AMENDMENT, MARCH 4, 1985
- 1. REVISE LANDSCAPE PLAN
- ADMINISTRATIVE AMENDMENT, JUNE 20, 1985
- 1. REVISE LANDSCAPE PLAN

AURORA, COLORADO
NORTH SATELLITE
PHASE II

LANDSCAPING PLAN

C.O.A. NORTH SATELLITE FACILITY

83-6064-2 LIS

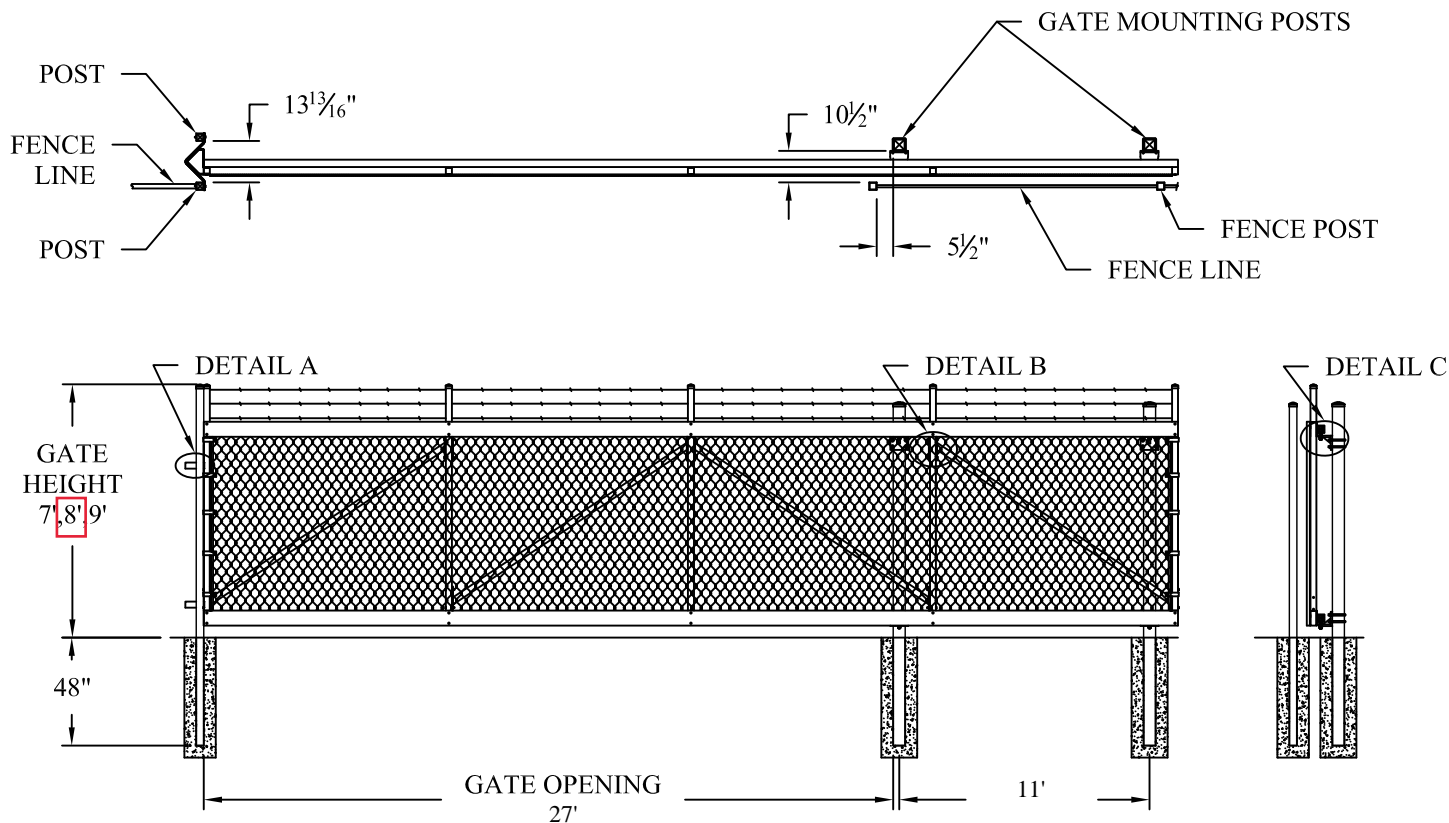
ADM. AMOT: 3-5-85, 6-20-85

DESIGNED PEJ, JAJ
DETAILED PEJ, GLS
CHECKED
APPROVED
DATE

Black & Veatch
Engineers - Architects
Denver, Colorado
Kansas City, Missouri

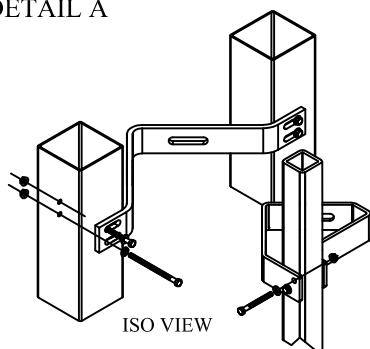
PROJECT NO.
10801

DATE	REVISIONS AND RECORD OF ISSUE	NO.	BY	CK	APP

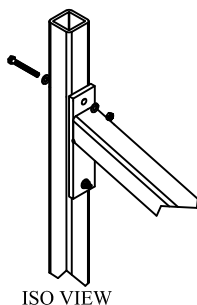


Values shown are nominal and not to be used for installation purposes. See product specification for installation requirements.

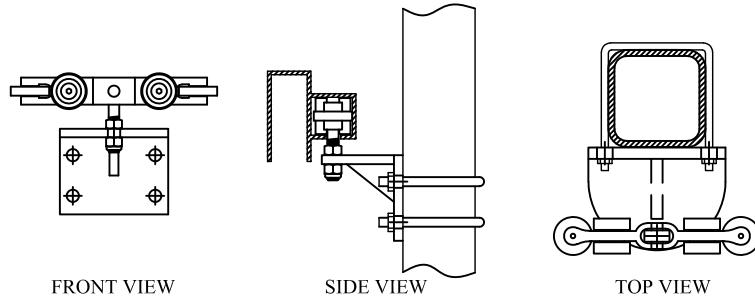
DETAIL A



DETAIL B



DETAIL C



CHAIN LINK CANTILEVER GATE SPECIFICATION SUMMARY

U.S.A. PATENT NO. 5,136,813

Material: Aluminum (ASTM B221 - 6005-T5)

Track: Proprietary Fast-Trak Extruded Shape



Uprights and Diagonal Braces: 2" Square

Cantilever Gate Hardware: Kit # TGKCD

Ameristar's TransPort Ornamental Cantilever Gates are designed to be mounted on posts that are off-set from the fence line. By off-setting the gate posts, the gate will pass between the fence and the mounting posts, keeping it from falling in the event of a track or hardware failure (a requirement of ASTM F2200).

CTBISO

Title: **TRANSPORT LINK CANTILEVER GATE BARB**

DR: CI SH . 1 of 1 SCALE: DO NOT SCALE

CK: PB Date: 6/28/10 REV: C



AMERISTAR®

1555 N. Mingo
Tulsa, OK 74116
1-888-333-3422
www.ameristarfence.com



Virtual Loop 2.0

Model number : OVS-02GT

The Virtual Loop 2.0 is a Vehicle Presence Sensor for use on Gates and Barriers.

The advanced Distance Measuring Radar reliably detects vehicles of all sizes while ignoring nearly all human movement. Eliminate all the hassles of installing and servicing in-ground loops and give your customer reliable activation and presence for all their gate applications.



26 Feet Extended Range



No cutting, coring or drilling of concrete or asphalt required



Extremely stable under all types of weather conditions



Presence Detection for all types of vehicles

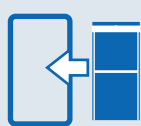


Can be programmed to ignore or detect humans based on application

Settings via
Smartphone App



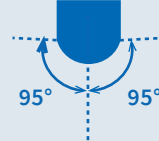
Direct conduit
access



Direct installation
for single gang box



Flexible
power supply



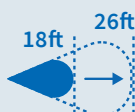
Wide angle
adjustment



Improved
built-in heater



Visible
indicator



Longer
detection range



Water
resistance



2 outputs



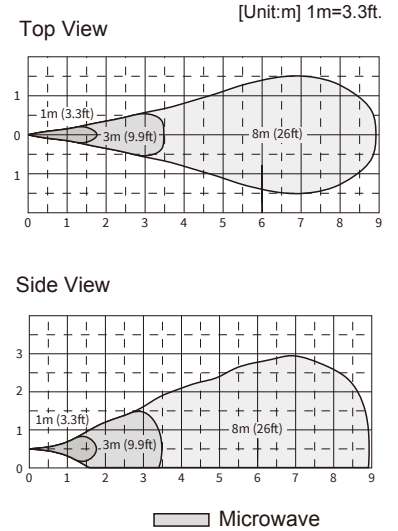
Improved human
cancellation

Specifications

Name		Vehicle Detection Sensor
Model		OVS-02GT
Detection method		Microwave (FMCW)
Frequency		Microwave: 24GHz, BLE communication: 2.4GHz
Response		Min 500ms
Supply voltage		12 to 24VAC/DC
Power consumption		Heater enabled: Up to 300mA, Heater disabled: Up to 80mA (at 24V)
Output	1	Non-Voltage Relay Output 30VDC 0.3A or less (resistance load)
	2	Non-Voltage Relay Output 30VDC 1A or less (N.O./N.C.)
RS485		n/a
Detection range		6 to 26ft range adjustable
Detectable vehicle speed		1 to 21mph
Application		Gate-activation, protection / count / traffic control
Parameter	Angle	Gate: 90°/45°, Traffic control: 45°, Count: 45°
	Detection area range	6 to 26ft
	Detected sensitivity	Level 1 to 7
	Undetected sensitivity	Level 1 to 7
	Sensitivity boost	OFF / Low / Middle / High
	Sensitivity boost timer [s]	Off / 0.5 / 1 / 2 / 3 / 4 / 5 / 10 / 20 / 40
	Detection response time (min)	Off / 5 / 60 / 180 / ∞
Indicator	ON / OFF	Possible to switch with the app
	Normal operation	Standby: solid green, Detected: solid red, Bad environment: blinking green (slow), BLE connected: solid blue
	Detection area check	Not detected: blinking blue, Pre-detected: blinking green, Detected: blinking red
	Calibration	Calibrating: quick blinking blue, Error: alternate blinking red & blue
	Sensor reset	Reset complete: solid yellow for 2 seconds
Ambient temperature		-22 to 122°F
Operating ambient humidity		95% max.
Degree of protection		IP66
Installation location		Indoor/outdoor, pole mounting (diameter: φ2.56in)
Installation height		18 to 20 in (from the road surface to the bottom of the unit)
Sensor angle adjustment		Left and right: ±93°
Weight		770g (including accessories)
Accessories		Retaining screw x 4, quick manual

Specifications are subject to change without notice for improvement.

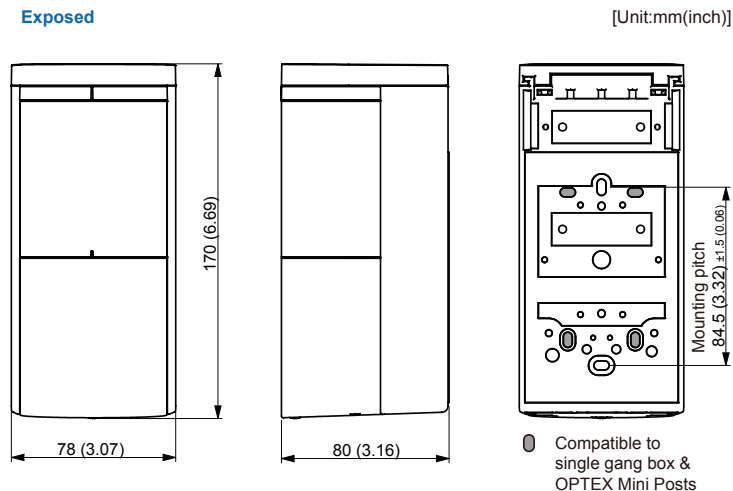
Detection Area Diagram



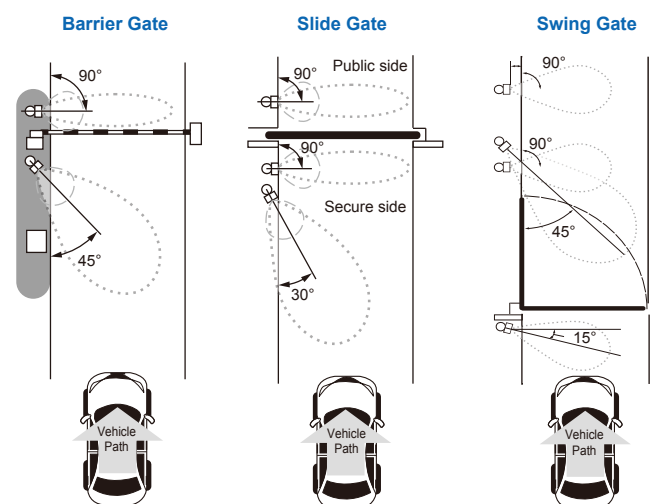
Installation height 0.5m(1.6ft.),
Operation type: Device activation,
Sensitivity: 4,

*Under normal operation, the detection area by an actual vehicle may be smaller.

Dimensions



Sensor Installation Conditions



Contact us: 800.966.7839
sales@optexamerica.com

www.optexamerica.com

