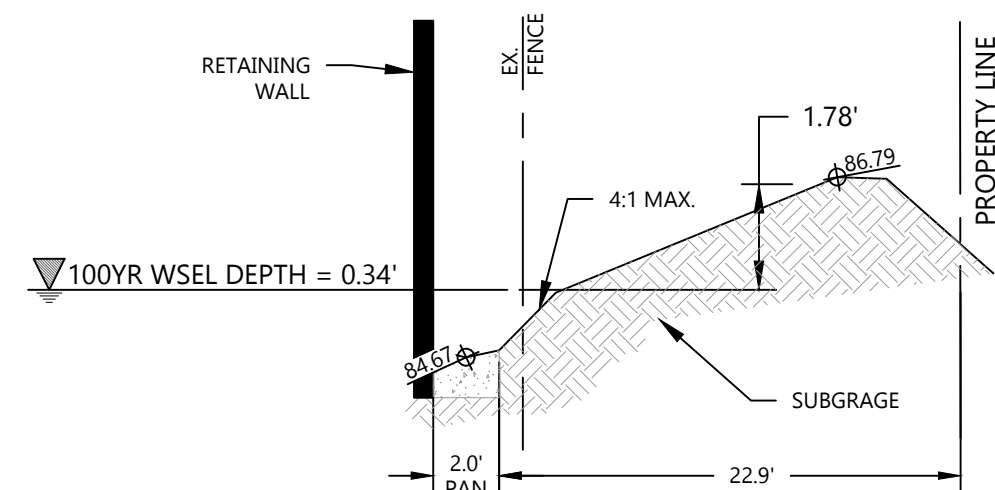
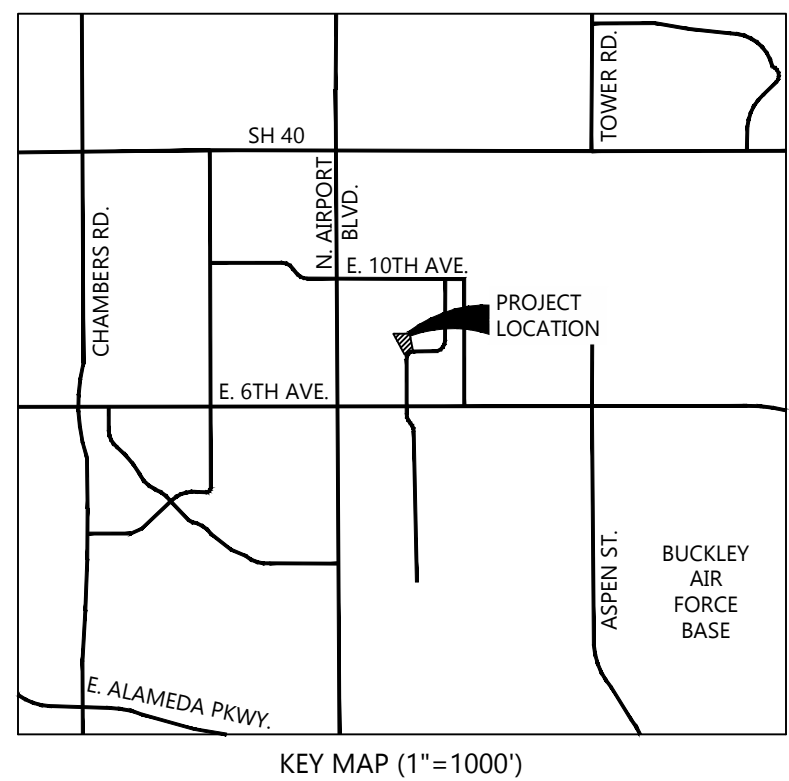


EXISTING CONCRETE PAN @ DP04  
EXISTING PAN GRADING ALONG NORTHEAST SIDE OF SITE (N.T.S.)

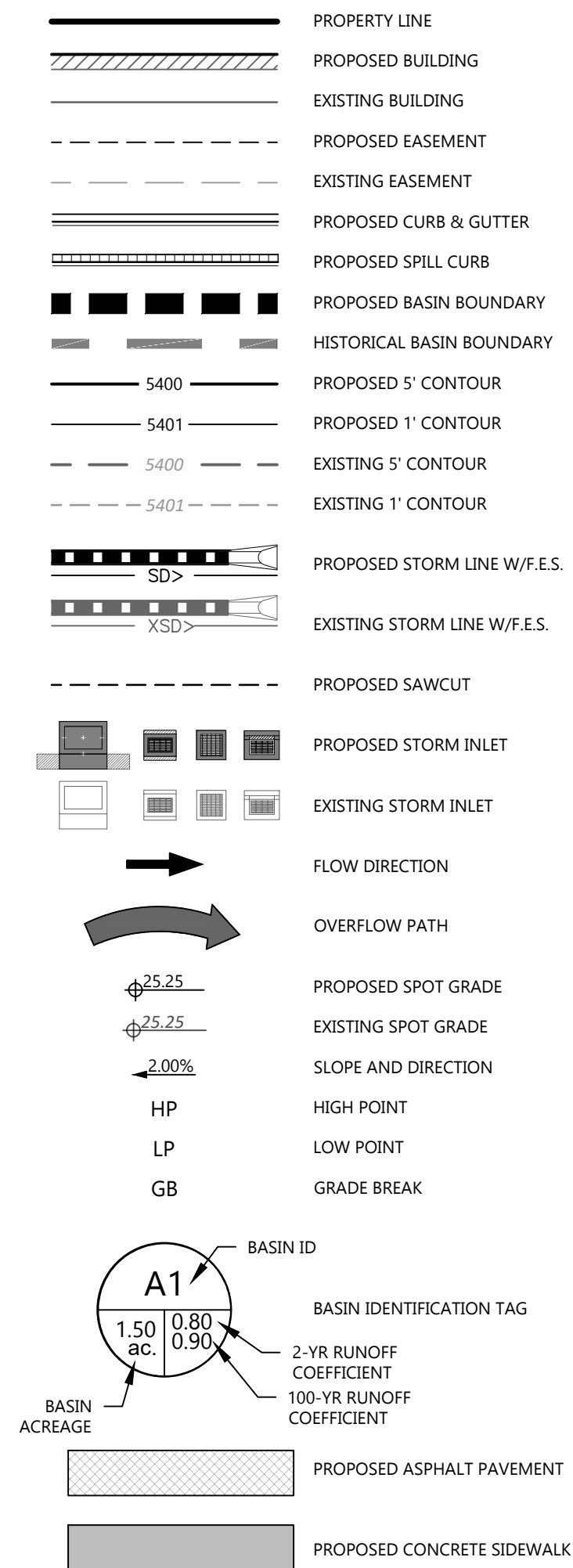


PROPOSED CONCRETE PAN @ DP 03  
PROPOSED PAN ALONG NORTH SIDE OF SITE (N.T.S.)

Basin Summary Table							
Description	Design Point	Area (ac.)	Imp. (%)	Direct Flow, Q		Cumulative Flow, Q	
				2-Year Storm (CFS)	100-Year Storm (CFS)	2-Year Storm (CFS)	100-Year Storm (CFS)
A-1	1	0.72	87%	1.7	5.1		
A-2	2	0.96	97%	2.7	7.7	5.2	15.1
A-3	3	0.03	16%	0.0	0.1	0.9	2.9
A-4	4	0.25	62%	0.5	1.5	0.9	2.8
A-5	5	0.26	52%	0.4	1.3	0.4	1.3
B-1	6	0.08	4%	0.0	0.1		
B-2	7	0.17	5%	0.09	0.3		
OS-1	4	0.04	4%	0.02	0.1		
OS-2	5	0.02	5%	0.01	0.04		



LEGEND:



BASIS OF BEARINGS:

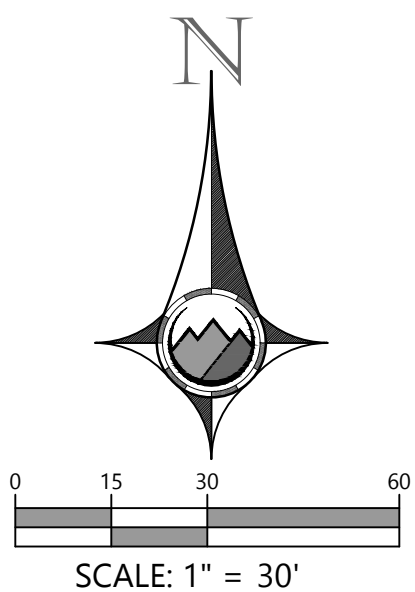
BEARINGS ARE BASED ON THE EAST LINE OF THE SW 1/4 OF SECTION 4, TOWNSHIP 4 SOUTH RANGE 66 WEST OF THE 6TH PRINCIPAL MERIDIAN BEARING S00°34'47" E PER THE CITY OF AURORA, COLORADO CONTROL NETWORK AND BOUNDED BY THE MONUMENTS SHOWN HEREON.

BENCHMARK:

COA ID 456604SW005  
ELEVATION US FEET 5,498.05  
3" DIAM. BRASS CAP STAMPED (C.O.A. - BM, I-52.5A)  
ON A 30' LONG STEEL PIPE IN CONC. AT THE NW COR. OF E. SALIDA WAY AND E. 6TH AVE. CAP IS 4' +/- W OF W FLOWLINE SALIDA WAY, FL AT END OF CURB TO BENCH MARK +/- 4' WEST, AND 59' +/- S OF S WALL LINE OF BLDG. NO. 601 SPRINGHILL PLAZA. SUFFIXED EXT. WITH "A" TO REFLECT SIGNIFICANT CHANGE IN ELEVATION.

NOTES:

- CITY OF AURORA PLAN REVIEW IS ONLY FOR GENERAL CONFORMANCE WITH CITY OF AURORA DESIGN CRITERIA AND THE CITY CODE. THE CITY IS NOT RESPONSIBLE FOR THE ACCURACY AND ADEQUACY OF THE DESIGN, OF DIMENSIONS AND ELEVATION WHICH SHALL BE CONFIRMED AND CORRELATED AT THE JOB SITE. THE CITY OF AURORA, THROUGH THE APPROVAL OF THIS DOCUMENT, ASSUMES NO RESPONSIBILITY FOR THE COMPLETENESS AND/ OR ACCURACY OF THIS DOCUMENT.
- ALL ONSITE STORM SEWER IS PRIVATE AND WAS SIZED FOR THE 100 YEAR STORM EVENT.
- FUTURE ADJACENT DEVELOPMENTS TO PROVIDE SURFACE CONVEYANCE FOR EMERGENCY OVERFLOWS.
- ENSURE THE PROVISIONS OF CRS-37-92-602, AS AMENDED BY SENATE BILL 15-212, REGARDING NOTIFICATION OF DOWNSTREAM WATER RIGHTS HOLDERS ARE UPHOLD.



PROOFcivil  
consulting engineers  
600 Grant Street | Suite 210 | Denver, CO

SEAL:

FOR AND ON BEHALF OF PROOF CIVIL CO.

REVISIONS

NO.	DATE	DESCRIPTION

PROJ. NO.: 24019

DATE: 7/10/24

DRAWN BY: KYS

CHECKED BY: MAA

FINAL DRAINAGE PLAN

L3, B2, SPRINGHILL INDUSTRIAL PARK SUB. FIL. NO. 1

AURORA

MFH ENVIRONMENTAL

CO

DRAWING NO.

DR1