

KEY NOTES

- C EXISTING CANOPY
- L NEW TYPICAL WALL SCONCE LIGHT SEE ELECTRICAL
- S NEW SIGNAGE - BY OTHERS - SEE ELEVATIONS
- RL EXISTING ROOF LADDER
- T EXISTING TRELLIS

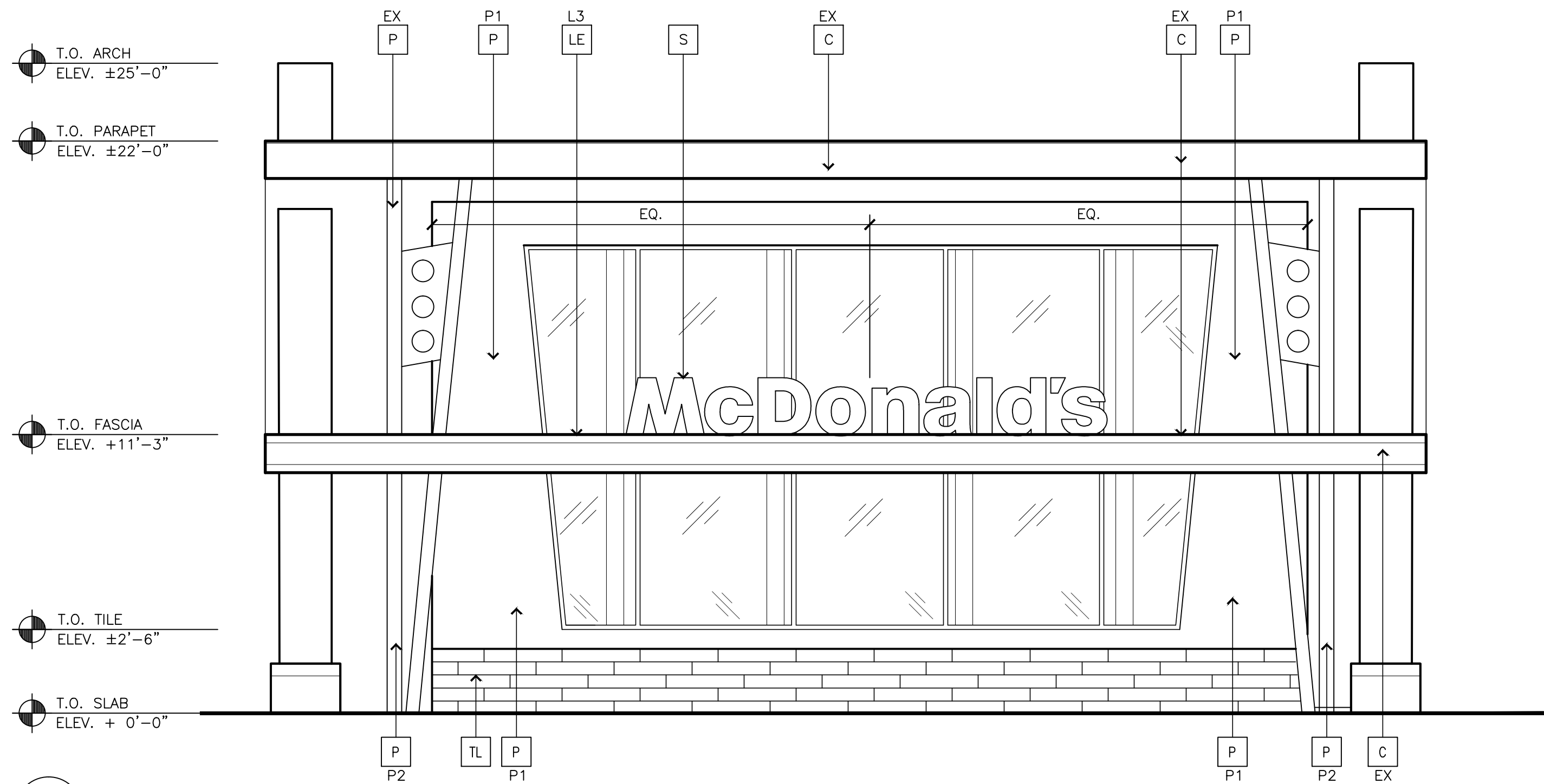
1 PROPOSED BRANDING PLAN
A1.0 SCALE: 3/16" = 1'-0"

SHEET NO.	TITLE	DRAWN BY	DATE	REVIEWED BY	DATE	REV	DATE	DESCRIPTION	BY
2017 MRP 2.0	CORE 16 EXTERIOR	FE	NOV 2016	AECOM Team	04/19/17				
005-0001	11025 E. COLFAX AVE.								
005-0001.00.0	FLOOR PLAN								
A1.0	FLOOR PLAN								

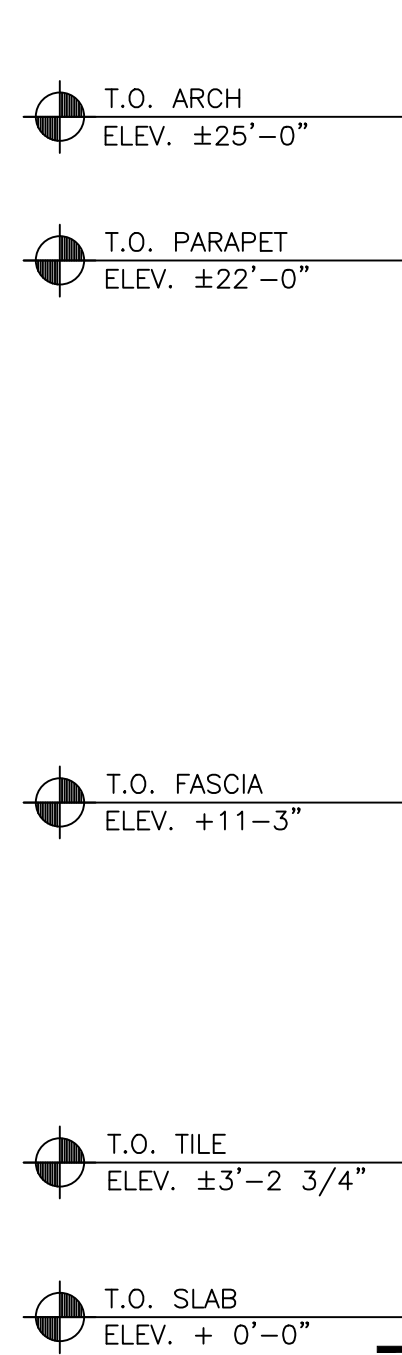
PREPARED FOR:
McDonald's USA, LLC

© 2017 McDonald's USA, LLC
These drawings and specifications are the confidential and proprietary property of McDonald's USA, LLC and shall not be copied or reproduced without written authorization. The contract documents were prepared by URS Corporation and are not suitable for use on a different site or at a later time. Use of these drawings for reference or example on another project requires the written consent of URS Corporation. The contract documents for the project are not authorized for reuse on another project.

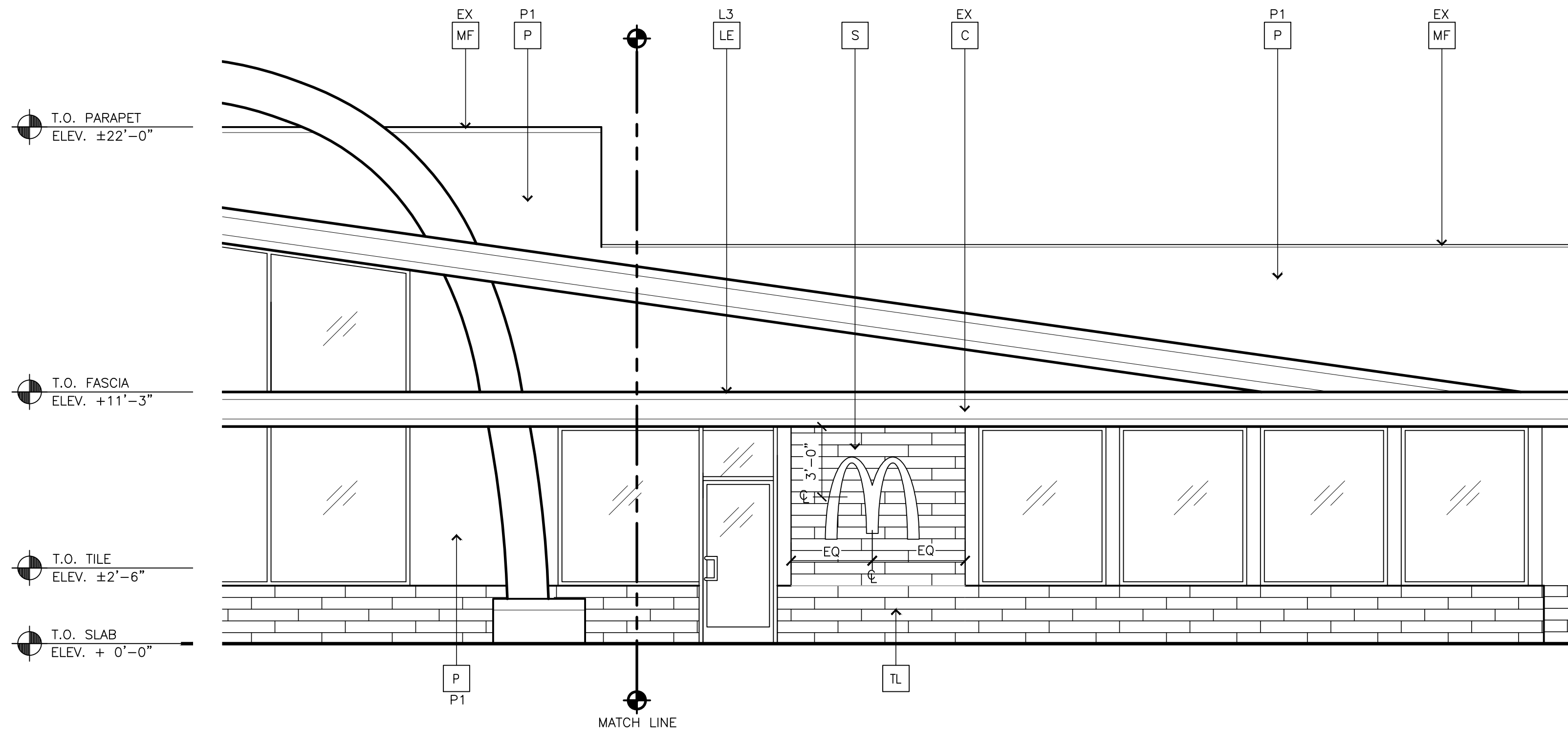
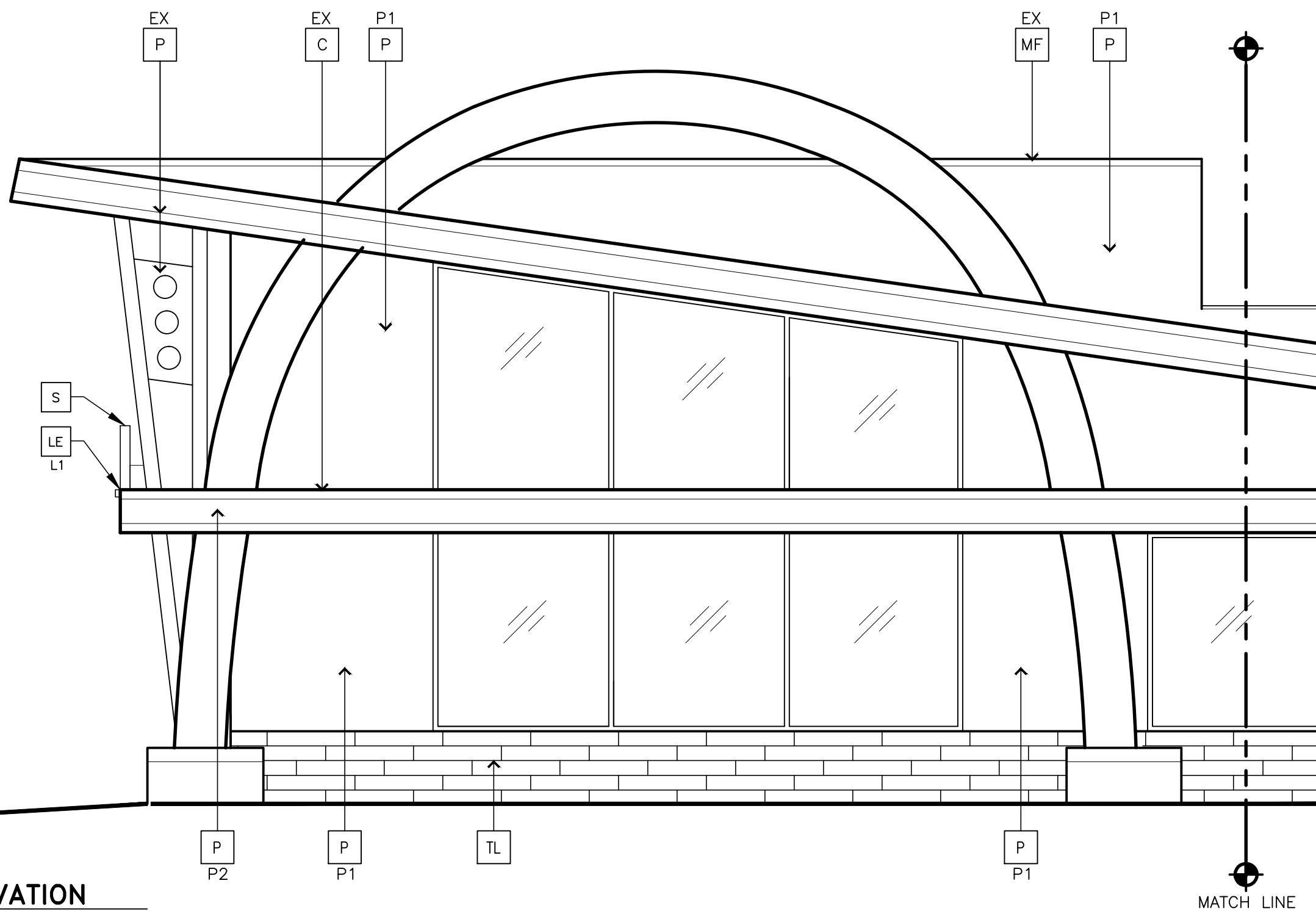
PREPARED BY:
URS Corporation
architects - engineers - planners
1255 Broad Street, Suite 201
Clifton, NJ 07013-3988
973.883.8590 fax 973.883.8501
http://www.urscorp.com



1 FRONT ELEVATION
1/4" = 1'-0"



2 NON DRIVE-THRU ELEVATION
1/4" = 1'-0"



3 NON DRIVE-THRU ELEVATION
1/4" = 1'-0"

KEY NOTES:

- C** EXISTING CANOPY
EX
- T** EXISTING TRELLIS - RECLAD - COLOR CHARCOAL BY TRELLIS VENDOR
- DS** DOWNSPOUT - PAINT TO MATCH COLOR OF SURROUNDING MATERIAL
- D** HOLLOW METAL DOOR - PAINT TO MATCH COLOR OF SURROUNDING MATERIAL
- GR** GUARD RAIL -SEE SITE PLAN FOR EXACT LOCATION AND LENGTH
- L** LIGHT FIXTURE - SEE ELECTRICAL
TYPE:
L1 = UP AND DOWN FIXTURE
L2 = DOWN ONLY FIXTURE
L3 = RECESSED DOWN FIXTURE
COLOR:
C1 = SILVER
C2 = WHITE
- LE** ACCENT LIGHTING - SEE ELECTRICAL
L1- LED LIGHT:
L1 = UP AND DOWN FIXTURE
L2 = DOWN ONLY FIXTURE
L3 = INTEGRAL CANOPY FIXTURE
- MF** METAL FASCIA - COLOR TO MATCH CORRUGATED METAL PANEL
1 - TYPE:
1 = PRE-FAB ANCHOR-TITE FASCIA
2 = PRE-FAB CUSTOM ARCADE FASCIA
3 = PRE-FAB MASONRY CAP FASCIA
EX = EXISTING TO REMAIN - PAINT TO MATCH COLOR OF SURROUNDING MATERIAL
- P** PAINT FINISH
P1- TYPE: (COLOR-SEE COLOR LEGEND)
P1 = PAINTED COLOR BASE BUILDING
P2 = PAINTED COLOR BASE BUILDING ACCENT
P3 = NOT USED
- PB** PIPE BOLLARD - PAINTED YELLOW
- PT** (RWHC) COIN COLLECTOR UNIT #FWPT DT2000 STD CALL 1-888-743-7435 TO ORDER
- S** McDONALD'S SIGNAGE BY OTHERS - UNDER SEPARATE PERMIT.
- T3** ALUMINUM TRELLIS 2" x 8" WALL FASCIA SYSTEM COLOR: CITYSCAPE
- TL** TILE: 6X24 BRUSH STROKE SERIES BY EUROWEST COLOR: EBONY STROKE TYPE: (COLOR-SEE COLOR LEGEND)

EUROWEST TILE

- TILE: EUROWEST TILE BRUSHSTROKE
6"x24x3/8" EBONY STROKE
LAYOUT PATTERN: 3/4" RUNNING BOND
FINISH: R9
- WATERPROOFING, SETTING MATERIAL AND GROUT: BY MAPEI
GROUT COLOR: MAPEI 47-CHARCOAL
GROUT WIDTH: 1/8" TO 3/16"
- INITIAL CLEANING: DETERDEK
*** POST INSTALLATION CLEANER IS REQUIRED ON ALL TILE APPLICATIONS. VERIFY CLEANING SOLUTION PRODUCT AND INSTRUCTIONS WITH MANUFACTURER.***
- EUROWEST CONTACT: JAN DETER, (714) 937-7500
- ADDITIONAL MATERIALS
BY SCHLUTER SCHLUTER SYSTEMS L.P.
- OUTSIDE CORNERS
COLOR: FOR WOOD TILE - RONDEC RO100TSDA (COLOR DARK ANTHRACITE BY SCHLUTER)
- MOVEMENT JOINTS / SOFT JOINT:
COLOR: FOR WOOD TILE - DILEX BWB100GS BLACK BY SCHLUTER
- SCHLUTER SYSTEMS L.P. CONTACT: EARL MAICUS, (518) 324-3410
- TILE GENERAL NOTES:
REFERENCE 2014 TCNA HANDBOOK -EJ171 MOVEMENT JOINT GUIDELINES
1. LOCATION AND FREQUENCY OF JOINTS
EXTERIOR: 8' TO 12' FEET IN EACH DIRECTION, OR AS INDICATED ON ELEVATIONS.
2. JOINT WIDTH
EXTERIOR: MINIMUM 3/8" FOR JOINTS 8' ON CENTER, MINIMUM 1/2" FOR JOINTS 12' ON CENTER.
3. PERIMETER JOINTS - MOVEMENT JOINTS ARE REQUIRED WHERE TILE WORK ABUTS RESTRAINING SURFACES SUCH AS PERIMETER WALLS, AND GRADE, FLEXIBLE SEALANT AND COMPRESSIBLE BACK-UP WHEN REQUIRED OR BOND BREAKER TAPE.
JOINT MATERIAL: URETHANE
COLOR: TO MATCH TILE AND GROUT COLOR
4. TIE-BACK AND SIGNAGE ATTACHEMENT - PRE-DRILL TILE AND SLEEVE AND SEAL ALL ATTACHEMENT POINTS.

COLOR LEGEND (ALL COLORS ARE PER BENJAMIN MOORE PAINTS, U.N.O.)

NEW ENGLAND GRAY SCHEME	BRAND WALLS NOT USED
	BASE BUILDING STORMY SKY BM# 1616
	BASE BUILDING / ACCENT - TIMBER WOLF BM# 1600
	DRIVE THRU SURROUND / ACCENT - NOT USED

BUILDING SIGNAGE SCHEDULE

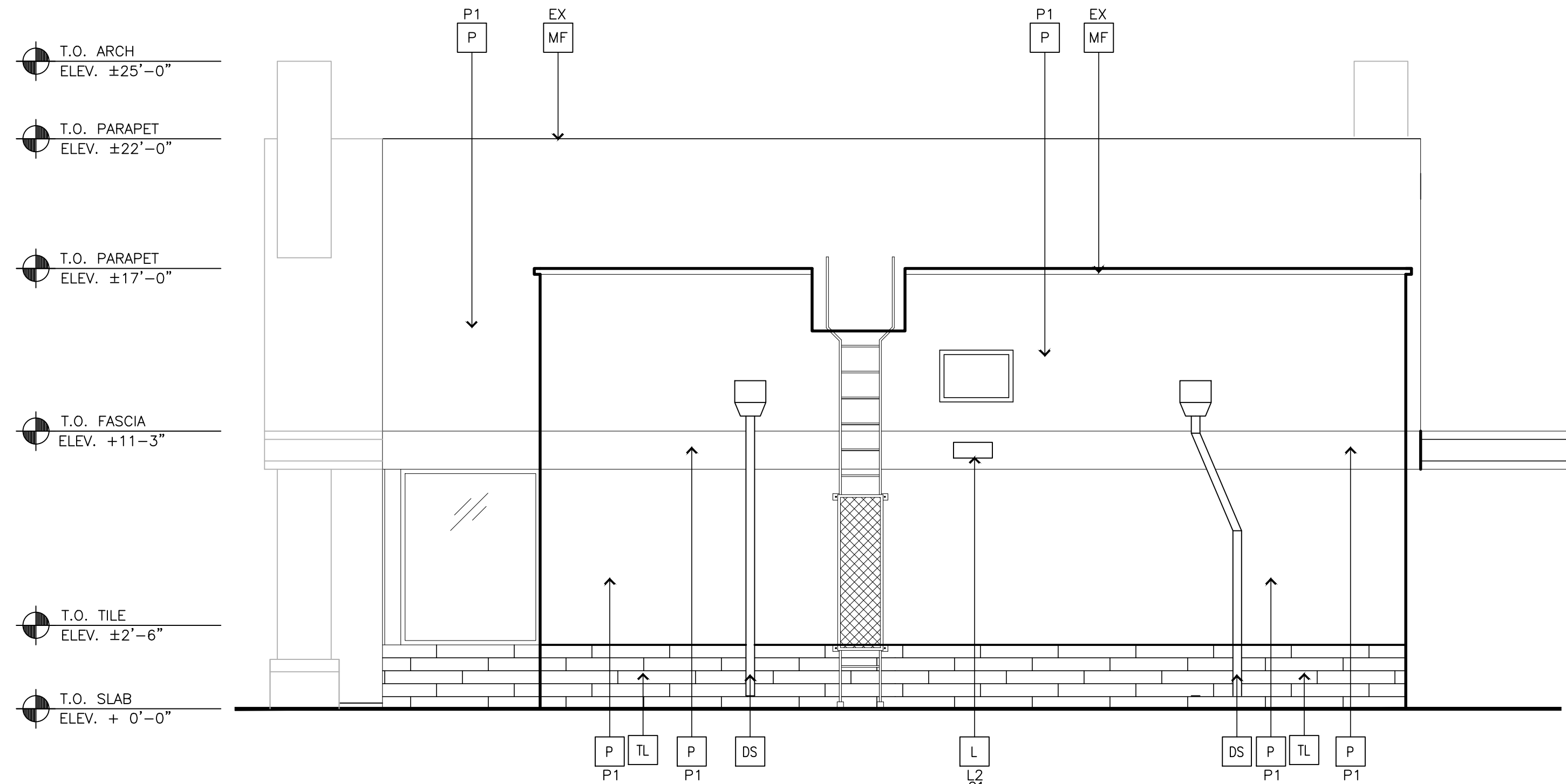
FACADE	SIGN ELEMENT	S.F.
FRONT	① McDONALD'S LOGO (2'-3"H X 18'-6"W)	41.6
	TOTAL:	41.6
NON-DRIVE THRU SIDE	① McDONALD'S "M" ARCH LOGO (3'-6"H X 4'-0"W)	14
	TOTAL:	14

TOTAL BUILDING SIGNAGE 55.6

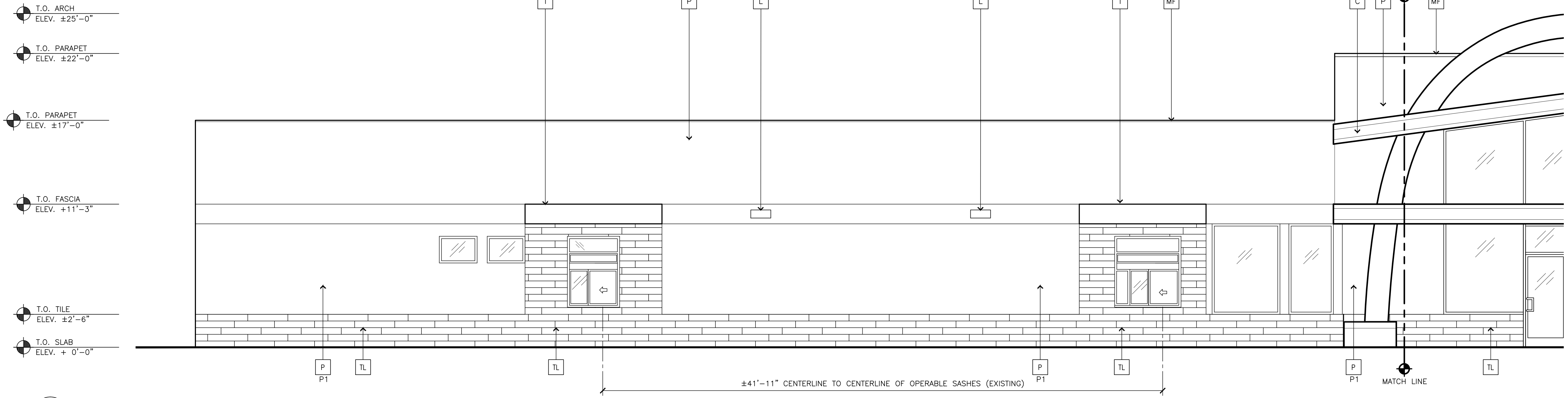
SHEET NO.	TITLE	DRAWN BY FE	STD ISSUE DATE NOV 2016	REVIEWED BY AECOM Team	DATE ISSUED 04/19/17	SITE ADDRESS 11025 E. COLFAX AVE.	SITE ID 005-0001	AURORA, CO 80010	DESCRIPTION	005-0001.00.0			ELEVATIONS														
										A2.0																	
										2017 MRP 2.0																	
										CORE 16 EXTERIOR																	
										DESCRIPTION																	
© 2017 McDonald's USA, LLC										PREPARED BY:			URS Corporation			architects - engineers - planners			1255 Broad Street, Suite 201			Clifton, NJ 07013-3988			FE		
McDonald's USA, LLC										PREPARED FOR:			URS Corporation			architects - engineers - planners			1255 Broad Street, Suite 201			Clifton, NJ 07013-3988			FE		
These drawings and specifications are the confidential and proprietary property of McDonald's USA, LLC and shall not be copied or reproduced without the written consent of McDonald's USA, LLC. Use of these drawings on this specific site in conjunction with its date and are not suitable for use on a different site or at a later time. Use of these drawings on any other site without the written consent of McDonald's USA, LLC is prohibited. McDonald's USA, LLC and its affiliates shall not be held responsible for the reproduction of these drawings or specifications for any other project. Reproduction of the contract documents for reuse on another project is not authorized.										DATE:			REV			DATE			BY								

PREPARED BY:
URS Corporation
architects - engineers - planners
1255 Broad Street, Suite 201
Clifton, NJ 07013-3988
973.883.8590 fax 973.883.8501
http://www.urscorp.com

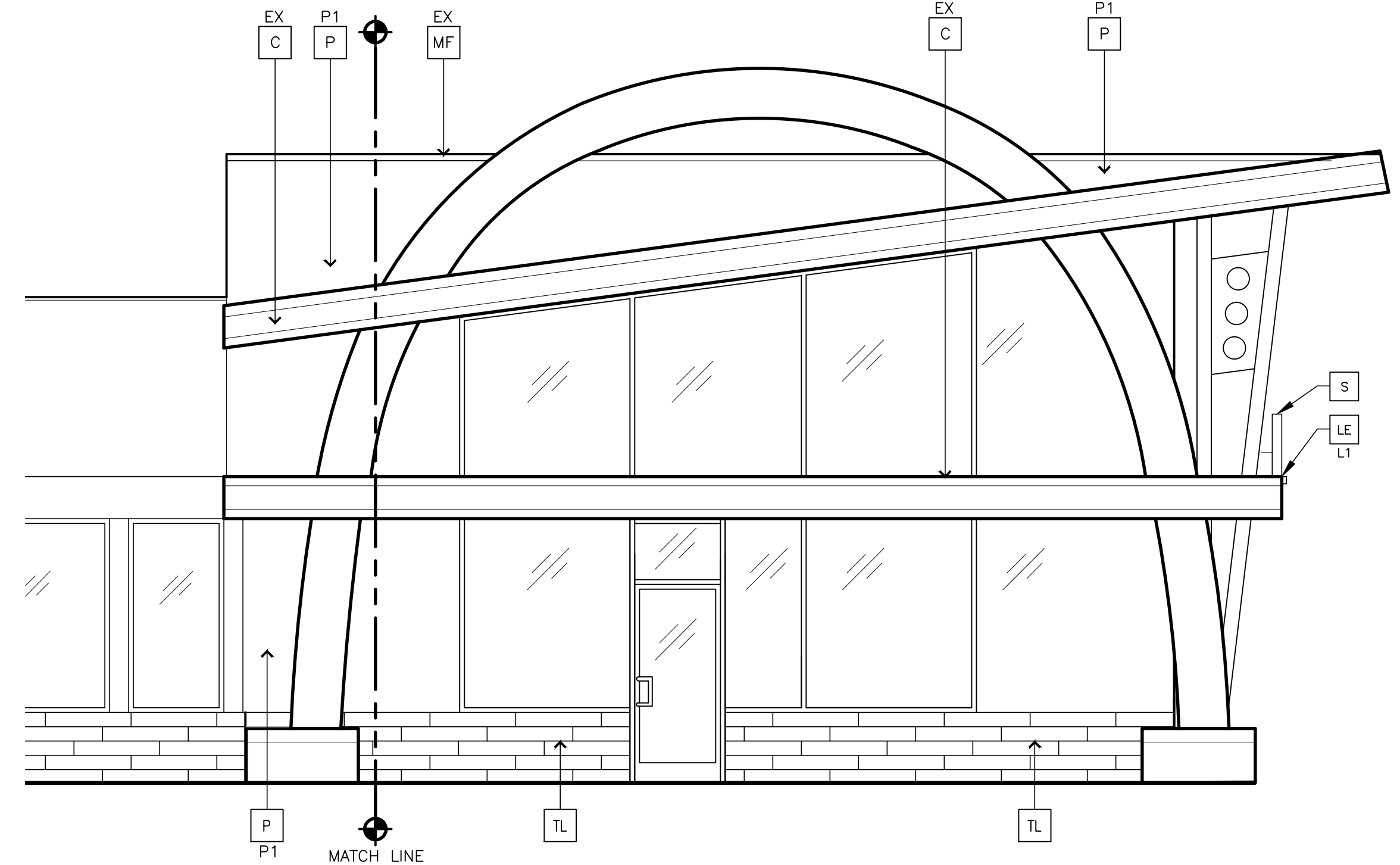
PREPARED FOR:
McDonald's USA, LLC
© 2017 McDonald's USA, LLC
These drawings and specifications are the confidential and proprietary property of McDonald's USA, LLC and shall not be copied or reproduced without written authorization. The contract documents were prepared for use on a different site or at a later time. Use of these drawings for reference or example on another project requires the approval of McDonald's USA, LLC. The contract documents for the project are not for reuse on another project is not authorized.



1 REAR ELEVATION
1/4" = 1'-0"



3 DRIVE-THRU ELEVATION
1/4" = 1'-0"



2 DRIVE-THRU ELEVATION
1/4" = 1'-0"

KEY NOTES:

- C** EXISTING CANOPY
EX

T EXISTING TRELLIS - RECLAD -
COLOR CHARCOAL BY TRELLIS
VENDOR

DS DOWNSPOUT - PAINT TO MATCH COLOR OF
SURROUNDING MATERIAL

D HOLLOW METAL DOOR - PAINT TO MATCH COLOR
OF SURROUNDING MATERIAL

GR GUARD RAIL -SEE SITE PLAN
FOR EXACT LOCATION AND LENGTH

L LIGHT FIXTURE - SEE ELECTRICAL

XX TYPE:
L1 = UP AND DOWN FIXTURE
L2 = DOWN ONLY FIXTURE
L3 = RECESSED DOWN FIXTURE
COLOR:
C1 = SILVER
C2 = WHITE
- LE** ACCENT LIGHTING - SEE ELECTRICAL
L1-LED LIGHT:
L1 = UP AND DOWN FIXTURE
L2 = DOWN ONLY FIXTURE
L3 = INTEGRAL CANOPY FIXTURE

MF METAL FASCIA - COLOR TO MATCH CORRUGATED
METAL PANEL
1-TYPE:
1 = PRE-FAB ANCHOR-TITE FASCIA
2 = PRE-FAB CUSTOM ARCADE FASCIA
3 = PRE-FAB MASONRY CAP FASCIA
EX = EXISTING TO REMAIN - PAINT TO MATCH
COLOR OF SURROUNDING MATERIAL

P PAINT FINISH
P1-TYPE: (COLOR-SEE COLOR LEGEND)
P1 = PAINTED COLOR BASE BUILDING
P2 = PAINTED COLOR BASE BUILDING ACCENT
P3 = NOT USED

PB PIPE BOLLARD - PAINTED YELLOW
- PT** (RMHC) COIN COLLECTOR
UNIT ##FWPT DT2000 STD
CALL 1-888-743-7435 TO ORDER

S McDONALD'S SIGNAGE BY OTHERS -
UNDER SEPARATE PERMIT.

T3 ALUMINUM TRELLIS 2" x 8" WALL FASCIA SYSTEM
COLOR: CITYSCAPE

TL TILE: 6X24 BRUSH STROKE SERIES BY EUROWEST
COLOR: EBONY STROKE
TYPE: (COLOR-SEE COLOR LEGEND)

EUROWEST TILE

TILE: EUROWEST TILE BRUSHSTROKE
6"x24x3/8" EBONY STROKE
LAYOUT PATTERN: 3/4" RUNNING BOND
FINISH: R9

WATERPROOFING, SETTING MATERIAL AND GROUT: BY MAPEI
GROUT COLOR: MAPEI 47-CHARCOAL
GROUT WIDTH: 1/8" TO 3/16"

INITIAL CLEANING: DETERDEK
*** POST INSTALLATION CLEANER IS REQUIRED ON ALL TILE
APPLICATIONS. VERIFY CLEANING SOLUTION PRODUCT AND
INSTRUCTIONS WITH MANUFACTURER.***

EUROWEST CONTACT: JAN DETER, (714) 937-7500

ADDITIONAL MATERIALS
BY SCHLUTER SCHLUTER SYSTEMS L.P.

OUTSIDE CORNERS
COLOR: FOR WOOD TILE - RONDEC R0100TSDA (COLOR
DARK ANTHRACITE BY SCHLUTER)

MOVEMENT JOINTS / SOFT JOINT:
COLOR: FOR WOOD TILE - DILEX BWB100GS BLACK BY
SCHLUTER

SCHLUTER SYSTEMS L.P., CONTACT: EARL MAICUS, (518) 324-3410

TILE GENERAL NOTES:
REFERENCE 2014 TCNA HANDBOOK -EJ171 MOVEMENT
JOINT GUIDELINES

1. LOCATION AND FREQUENCY OF JOINTS
EXTERIOR: 8' TO 12' FEET IN EACH DIRECTION, OR AS
INDICATED ON ELEVATIONS.
2. JOINT WIDTH
EXTERIOR: MINIMUM 3/8" FOR JOINTS 8' ON CENTER,
MINIMUM 1/2" FOR JOINTS 12' ON CENTER.
3. PERIMETER JOINTS - MOVEMENT JOINTS ARE REQUIRED
WHERE TILE WORK ABUTS RESTRAINING SURFACES
SUCH AS PERIMETER WALLS, AND GRADE. FLEXIBLE
SEALANT AND COMPRESSIBLE BACK-UP WHEN
REQUIRED OR BOND BREAKER TAPE.
JOINT MATERIAL: URETHANE
COLOR: TO MATCH TILE AND GROUT COLOR
4. TIE-BACK AND SIGNAGE ATTACHMENT - PRE-DRILL
TILE AND SLEEVE AND SEAL ALL ATTACHMENT POINTS.

COLOR LEGEND (ALL COLORS ARE PER BENJAMIN MOORE PAINTS, U.N.O.)

NEW ENGLAND GRAY SCHEME	BRAND WALLS NOT USED
	STORMY SKY BM# 1616
	BASE BUILDING / ACCENT - TIMBER WOLF BM# 1600
	DRIVE THRU SURROUND / ACCENT - NOT USED

BUILDING SIGNAGE SCHEDULE

FACADE	SIGN ELEMENT	S.F.
FRONT	① McDONALD'S LOGO (2'-3"H X 18'-6"W)	41.6
	TOTAL:	41.6
NON-DRIVE THRU SIDE	① McDONALD'S "M" ARCH LOGO (3'-6"H X 4'-0"W)	14
	TOTAL:	14
TOTAL BUILDING SIGNAGE		55.6

PREPARED BY: **URS Corporation**
architects - engineers - planners
1265 Broad Street, Suite 201
Clifton, NJ 07013-3988
973.883.8590 fax 973.883.8501
http://www.urscorp.com

PREPARED FOR: **McDonald's USA, LLC**
These drawings and specifications are the confidential and proprietary
property of McDonald's USA, LLC and shall not be copied or reproduced
without the express written authorization of McDonald's USA, LLC. These
drawings are not to be used for any other project without the express
written authorization of McDonald's USA, LLC. Use of
these drawings for reference or example on another project requires the
contract documents for reuse on another project is not authorized.

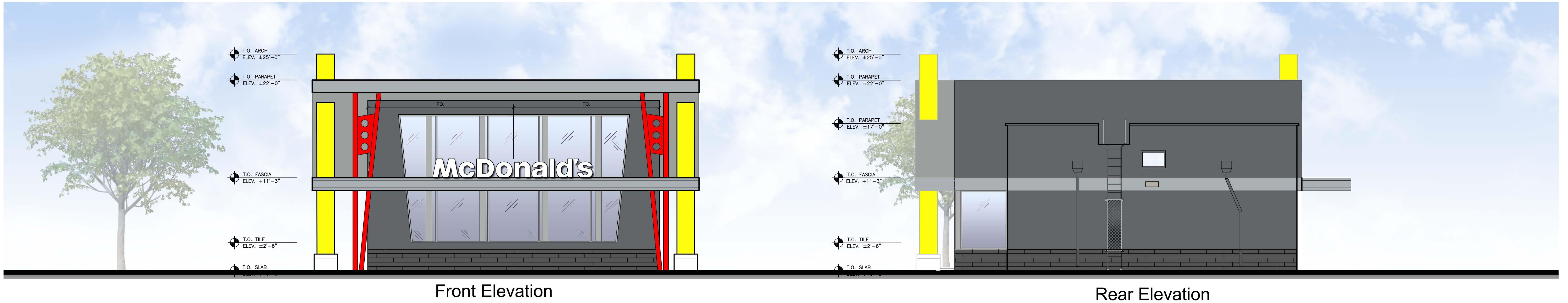
DRAWN BY: FE
STD ISSUE DATE: NOV 2016
REVIEWED BY: AECOM Team
DATE ISSUED: 04/19/17

TITLE: 2017 MRP 2.0
CORE 16 EXTERIOR
DESCRIPTION

SHEET NO. 005-0001.00.0
A2.1
ELEVATIONS

SITE ADDRESS: 11025 E. COLFAX AVE.
AURORA, CO 80010

DATE:
REV:
DESCRIPTION:
BY:



SCHEME: NEW ENGLAND GREY

Materials Legend:

Paint - Base Color: <i>Stormy Sky</i> BM-1616
Paint - Accent Color: <i>Timber Wolf</i> BM-1600
Tile - Eurowest: <i>Ebony Stroke</i> Size 6x24 Grout: 47 Charcoal
Aluminum Trellis (Existing): Cityscape
Glazing (Windows + Storefront)
Metal (Coping)