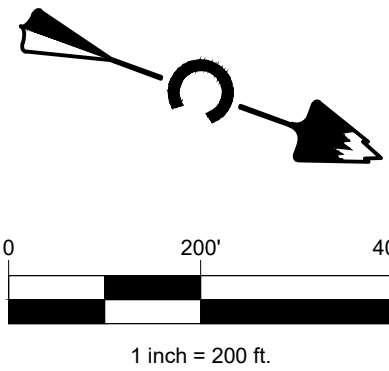


RUNOFF SUMMARY TABLE							
DESIGN POINT	BASIN	AREA (AC)	5-YEAR RUNOFF (CFS)	100-YEAR RUNOFF (CFS)	2-YEAR C VALUE	100-YEAR C VALUE	% IMPERVIOUS
A1	A1	4.923	6.87	24.57	0.66	0.82	81.0%
A2	A2	0.708	1.62	5.18	0.78	0.87	95.0%
A3	A3	0.936	2.08	6.78	0.76	0.86	92.8%
A4	A4	1.586	2.57	9.28	0.65	0.81	80.0%
B1	B1	6.384	3.44	19.45	0.34	0.67	45.1%
B2	B2	0.624	1.25	3.99	0.78	0.87	95.0%
B3	B3	0.822	1.41	4.79	0.71	0.84	87.2%
B4	B4	0.566	1.04	3.54	0.71	0.84	87.5%
B5	B5	0.434	0.90	2.88	0.78	0.87	95.0%
B6	B6	0.411	0.94	3.01	0.78	0.87	95.0%
B7	B7	0.461	1.00	3.24	0.76	0.86	92.8%
B8	B8	1.360	2.55	9.22	0.65	0.81	80.0%
Total	B9	19.215	25.67	95.92	0.71	0.84	86.5%
OS1	OS1	0.33	0.62	2.22	0.65	0.81	80.0%
OS2	OS2	0.20	0.38	1.38	0.65	0.81	80.0%
EX1	EX1	8.04	0.43	21.63	0.03	0.50	5.0%
EX2	EX2	12.13	2.43	33.43	0.12	0.55	17.3%
EX3	EX3	0.20	0.46	1.46	0.78	0.87	95.0%



LEGEND

- EXISTING PROPOSED
- AREA XX.X 0.45 0.60
- AREA XX.X 0.45 0.60
- DESIGN POINT
- DIRECTIONAL FLOW ARROW
- PROPOSED DRAINAGE BASIN
- PROPOSED MAJOR CONTOUR
- PROPOSED MINOR CONTOUR
- EXISTING MAJOR CONTOUR
- EXISTING MINOR CONTOUR
- PROPOSED STORM & STUB OUT
- EXISTING STORM & STUB OUT
- EXISTING STORM TO BE SURVEYED
- STORM MANHOLES
- STORM INLETS
- FES, FOREBAY, & TRICKLE CHANNEL
- EASEMENT
- RIGHT OF WAY (R.O.W.)
- CENTERLINE
- DRAINAGE EASEMENT
- PROJECT BOUNDARY
- 100 YEAR FLOODPLAIN
- 500 YEAR FLOODPLAIN
- STREAMLINE
- GOLF COURSE LIMITS

NOTES:

- APPROVAL OF THIS DOCUMENT BY CITY OF AURORA DOES NOT IMPLY APPROVAL FOR ANY OFF-SITE WORK ON ADJACENT PRIVATE PROPERTY. IT IS THE OWNER'S RESPONSIBILITY TO COORDINATE WITH ADJACENT PROPERTY OWNERS AND OBTAIN ALL NECESSARY APPROVALS AND EASEMENTS FOR SUCH WORK. IF APPROVALS ARE NOT OBTAINED BY THE START OF CONSTRUCTIONS, REVISIONS TO CIVIL PLANS WILL BE REQUIRED.
- CITY OR AURORA PLAN REVIEW IS ONLY FOR GENERAL CONFORMANCE WITH CITY OF AURORA DESIGN CRITERIA AND THE CITY CODE. THE CITY IS NOT RESPONSIBLE FOR THE ACCURACY AND ADEQUACY OF THE DESIGN, OF DIMENSIONS AND ELEVATIONS WHICH MUST BE CONFIRMED AND CORRELATED AT THE JOB SITE. THE CITY OF AURORA, THROUGH THE APPROVAL OF THIS DOCUMENT, ASSUMES NO RESPONSIBILITY FOR THE COMPLETENESS AND/OR ACCURACY OF THIS DOCUMENT.
- THERE IS A FLUVIAL STUDY WHICH ILLUSTRATES THAT THERE MAY BE ADVERSE IMPACTS TO THIS STUDY AREA FROM MOVEMENT FROM THE ADJACENT CREEK. THE DEVELOPER ACKNOWLEDGES THAT UNTIL BANK STABILIZATION IS IMPLEMENTED THAT THERE ARE CONCEPTUAL RISKS TO THE SITE.
- ALL STORM INFRASTRUCTURE IS PUBLIC AND SIZED FOR THE 100 YEAR STORM, UNLESS OTHERWISE NOTED.
- ZANTE STREET IS ENTIRELY VERTICAL CATCH CURB.
- ANY FUTURE DEVELOPMENT IN THE PLANNING AREA WILL REQUIRE PERPETUATION OF EMERGENCY OVERFLOWS THROUGH THEIR SITE.
- NO WORK IS ALLOWED IN THE FLOODPLAIN WITHOUT A FLOODPLAIN DEVELOPMENT PERMIT. NO WORK IS ALLOWED WITHIN THE FLOODWAY WITHOUT A CLOMR OR NO RISE ANALYSIS INCLUDED WITHIN THE FLOODPLAIN DEVELOPMENT PERMIT.

BENCHMARK  
CITY OF AURORA BENCHMARK 436519W001  
BENCHMARK IS A 3-INCH DIAMETER CAP, STAMPED "CITY OF AURORA LS 16419 -1986" SET IN A RANGE BOX. BENCHMARK IS EAST OF GUN CLUB ROAD 1 MILE SOUTH OF MISSISSIPPI AVENUE. BENCHMARK IS ALSO THE MONUMENT FOR THE 1/4 CORNER COMMON TO SECTIONS 24 & 19 R6616W, T4S. PUBLISHED ELEVATION = 5606.25 NAVD88

ENGINEER'S STATEMENT

PREPARED UNDER MY SUPERVISION

JESS KORDZIEL, PE, CFM  
COLORADO NO. 36130  
FOR AND ON BEHALF OF CORE CONSULTANTS INC.

DATE

Know what's below.  
Call before you dig.



DATE BY

# REVISION DESCRIPTION

MURPHY CREEK - ZANTE STREET

AURORA, COLORADO

OVERALL DRAINAGE MAP

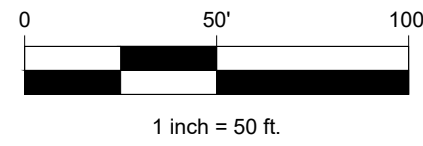
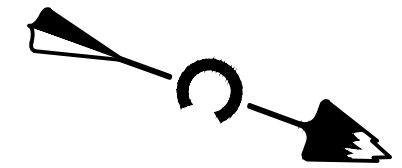
NOT FOR CONSTRUCTION

DESIGNED BY: GP  
DRAWN BY: GP  
CHECKED BY: JK

JOB NO.  
21-134  
SHEET  
1



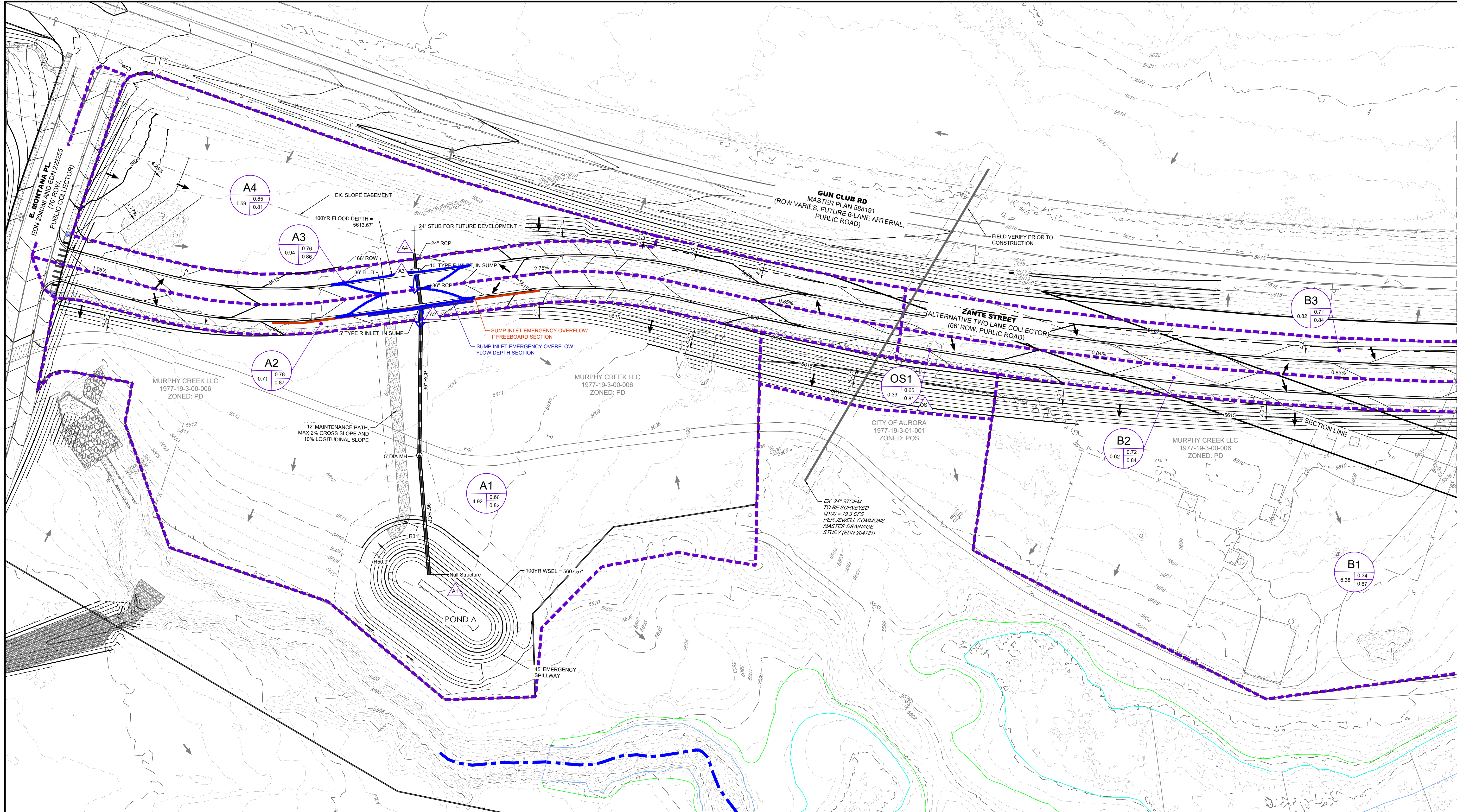
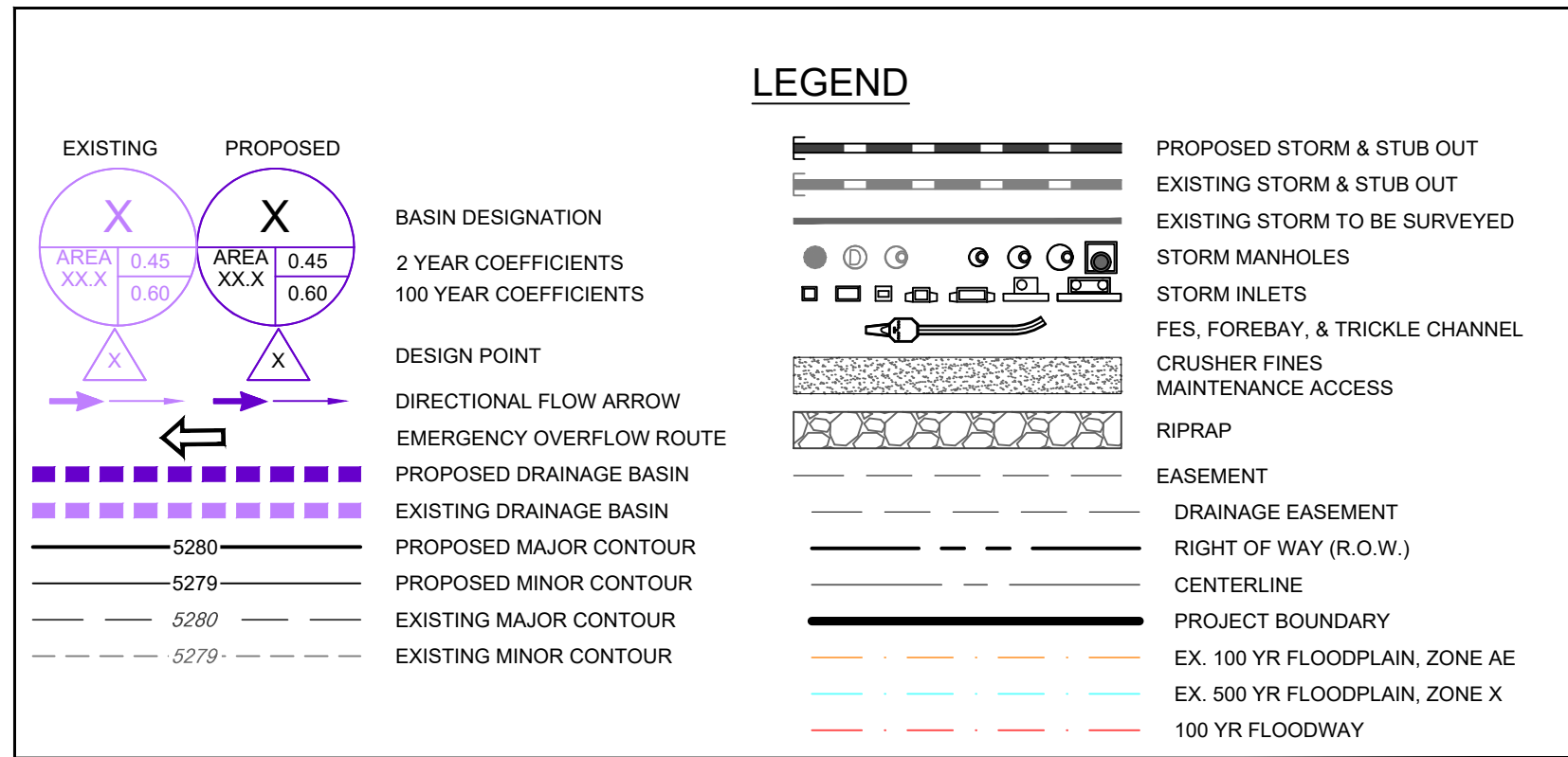
BENCHMARK  
CITY OF AURORA BENCHMARK 456519NW001  
BENCHMARK IS A 3-INCH DIAMETER CAP, STAMPED "CITY OF AURORA  
LS 16419-1986" SET IN A RANGE BOX. BENCHMARK IS EAST OF GUN  
CLUB ROAD 3/4 MILE SOUTH OF MISSISSIPPI AVENUE. BENCHMARK IS  
ALSO THE MONUMENT FOR THE 1/4 CORNER COMMON TO SECTIONS  
24 / 19 R66116SW, T4S. PUBLISHED ELEVATION = 5608.25 NAVD83.



#### NOTES:

- APPROVAL OF THIS DOCUMENT BY CITY OF AURORA DOES NOT IMPLY APPROVAL FOR ANY OFFSITE WORK ON ADJACENT PRIVATE PROPERTY. IT IS THE OWNER'S RESPONSIBILITY TO COORDINATE WITH ADJACENT PROPERTY OWNERS AND OBTAIN ALL NECESSARY APPROVALS AND EASEMENTS FOR SUCH WORK. IF APPROVALS ARE NOT OBTAINED BY THE START OF CONSTRUCTIONS, REVISIONS TO CIVIL PLANS WILL BE REQUIRED.
- CITY OF AURORA PLAN REVIEW IS ONLY FOR GENERAL CONFORMANCE WITH CITY OF AURORA DESIGN CRITERIA AND THE CITY CODE. THE CITY IS NOT RESPONSIBLE FOR THE ACCURACY AND ADEQUACY OF THE DESIGN, OF DIMENSIONS AND ELEVATIONS WHICH MUST BE CONFIRMED AND CORRELATED AT THE JOB SITE. THE CITY OF AURORA, THROUGH THE APPROVAL OF THIS DOCUMENT, ASSUMES NO RESPONSIBILITY FOR THE COMPLETENESS AND/OR ACCURACY OF THIS DOCUMENT.
- THERE IS A FLUVIAL STUDY WHICH ILLUSTRATES THAT THERE MAY BE ADVERSE IMPACTS TO THIS STUDY AREA FROM MOVEMENT FROM THE ADJACENT CREEK. THE DEVELOPER ACKNOWLEDGES THAT UNTIL BANK STABILIZATION IS IMPLEMENTED THAT THERE ARE CONCEPTUAL RISKS TO THE SITE.
- ALL STORM INFRASTRUCTURE IS PUBLIC AND SIZED FOR THE 100 YEAR STORM, UNLESS OTHERWISE NOTED.
- ZANTE STREET IS ENTIRELY VERTICAL, 6' CATCH CURB. ANY FUTURE DEVELOPMENT IN THE PLANNING AREA WILL REQUIRE PERPETUATION OF EMERGENCY OVERFLOWS THROUGH THEIR SITE.

NO WORK IS ALLOWED IN THE FLOODPLAIN WITHOUT A FLOODPLAIN DEVELOPMENT PERMIT. NO WORK IS ALLOWED WITHIN THE FLOODWAY WITHOUT A CLOMPR OR A NO RISE ANALYSIS INCLUDED WITHIN THE FLOODPLAIN DEVELOPMENT PERMIT.



MATCHLINE STA 25+00  
SEE NEXT SHEET

**MURPHY CREEK - ZANTE STREET**  
AURORA, COLORADO

PRELIMINARY DRAINAGE PLAN 1

NOT FOR  
CONSTRUCTION

DESIGNED BY: GP  
DRAWN BY: GP  
CHECKED BY: JK

JOB NO.  
21-134

SHEET  
2



Know what's below.  
Call before you dig.

#	REVISION DESCRIPTION	DATE	BY

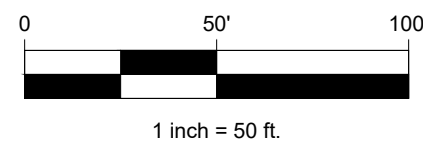
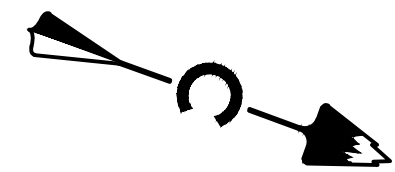
**CORE**

CORE CONSULTANTS, INC.  
3473 S. BROADWAY  
DENVER, CO 80113  
303.703.4444  
LIVEYOURCORE.COM

LAND DEVELOPMENT  
ENERGY  
PUBLIC INFRASTRUCTURE



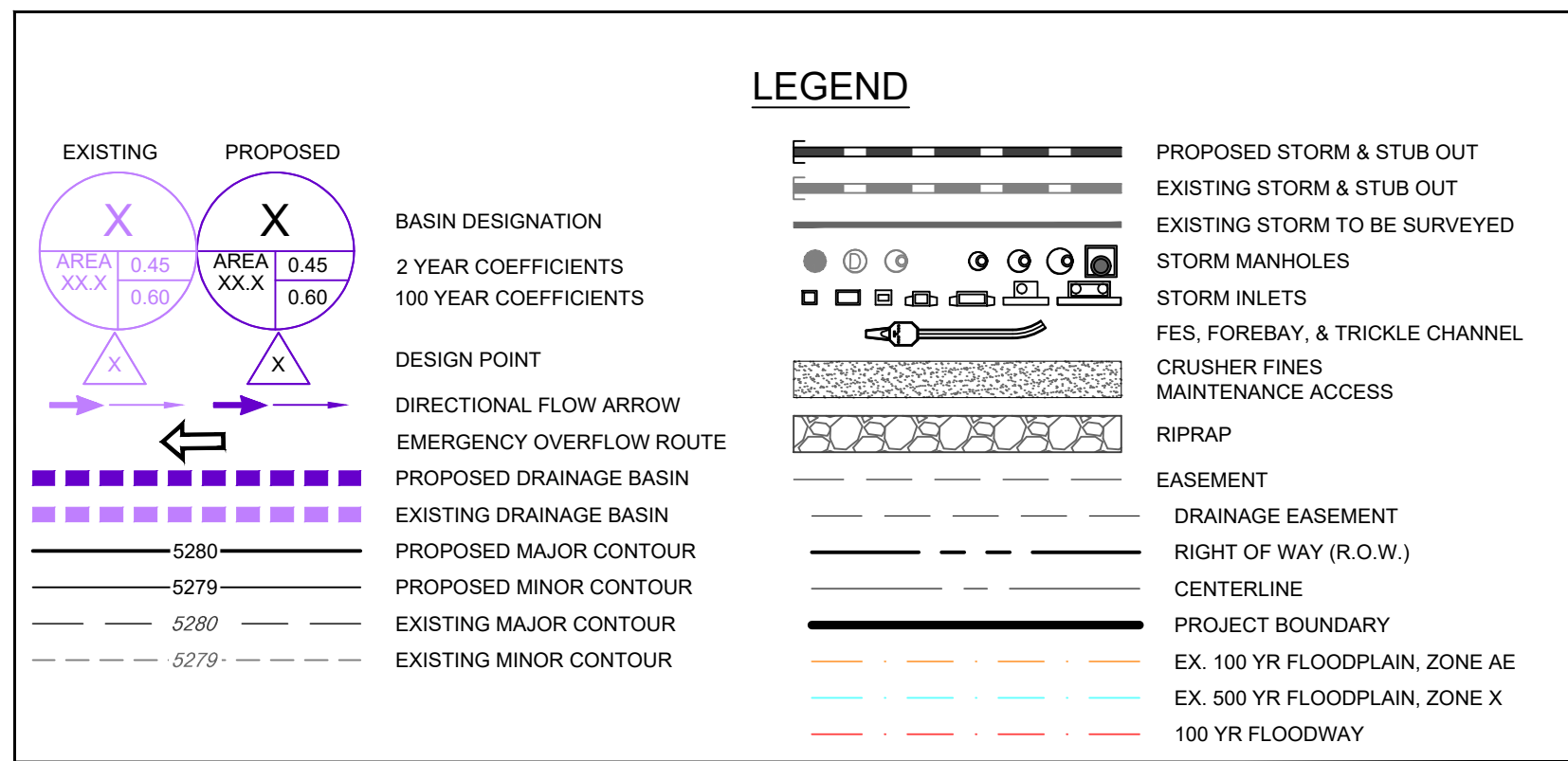
BENCHMARK  
CITY OF AURORA BENCHMARK 456519NW001  
BENCHMARK IS A 3-INCH DIAMETER CAP, STAMPED "CITY OF AURORA  
LS 16419-1986" SET IN A RANGE BOX. BENCHMARK IS EAST OF GUN  
CLUB ROAD 3/4 MILE SOUTH OF MISSISSIPPI AVENUE. BENCHMARK IS  
ALSO THE MONUMENT FOR THE 1/4 CORNER COMMON TO SECTIONS  
24 / 19 R66165W, T4S. PUBLISHED ELEVATION = 5608.25' NAVD83.



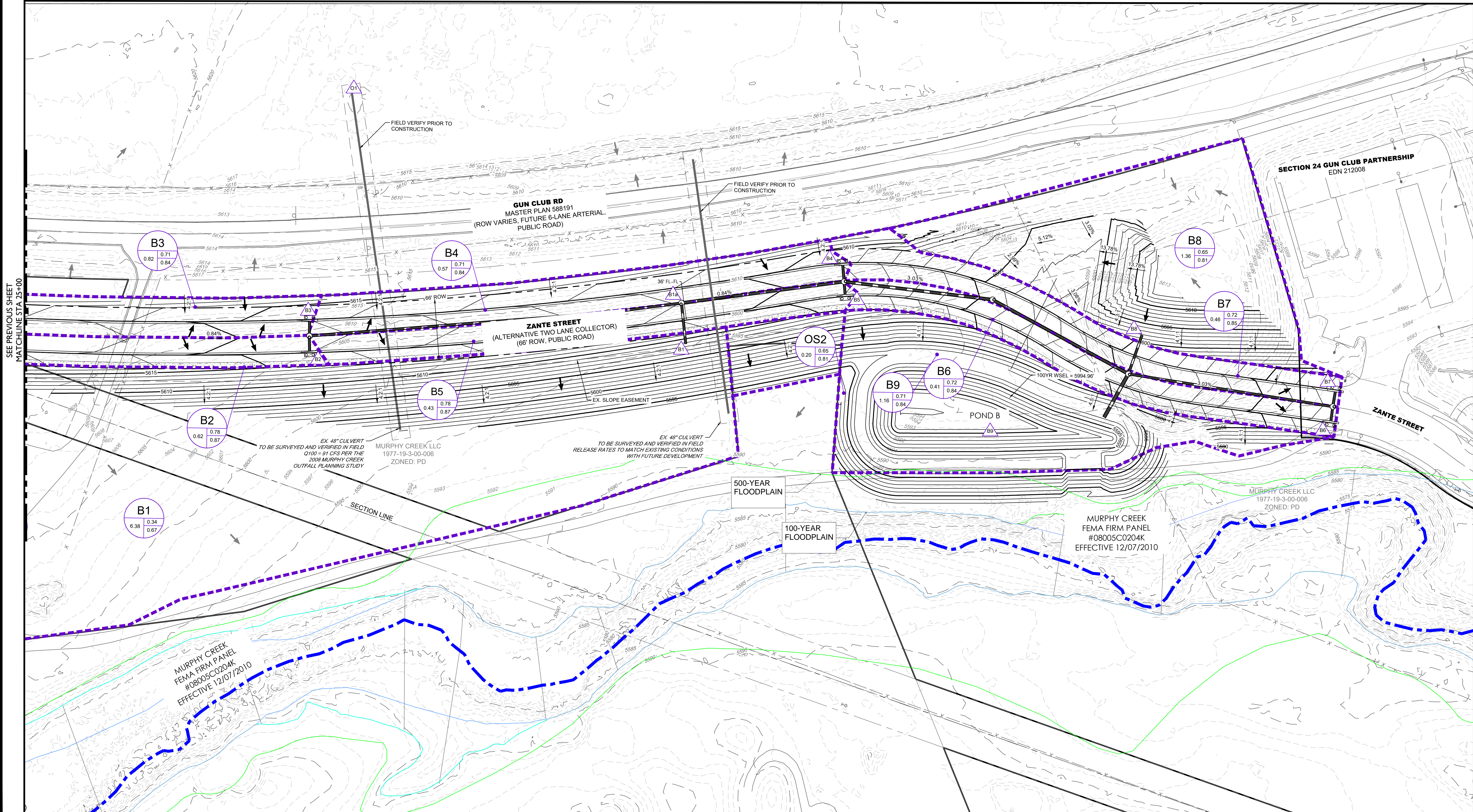
#### NOTES:

1. APPROVAL OF THIS DOCUMENT BY CITY OF AURORA DOES NOT IMPLY APPROVAL FOR ANY OFFSITE WORK ON ADJACENT PRIVATE PROPERTY. IT IS THE OWNER'S RESPONSIBILITY TO COORDINATE WITH ADJACENT PROPERTY OWNERS AND OBTAIN ALL NECESSARY APPROVALS AND EASEMENTS FOR SUCH WORK. IF APPROVALS ARE NOT OBTAINED BY THE START OF CONSTRUCTIONS, REVISIONS TO CIVIL PLANS WILL BE REQUIRED.
2. CITY OF AURORA PLAN REVIEW IS ONLY FOR GENERAL CONFORMANCE WITH CITY OF AURORA DESIGN CRITERIA AND THE CITY CODE. THE CITY IS NOT RESPONSIBLE FOR THE ACCURACY AND ADEQUACY OF THE DESIGN, OF DIMENSIONS AND ELEVATIONS WHICH MUST BE CONFIRMED AND CORRELATED AT THE JOB SITE. THE CITY OF AURORA, THROUGH THE APPROVAL OF THIS DOCUMENT, ASSUMES NO RESPONSIBILITY FOR THE COMPLETENESS AND/OR ACCURACY OF THIS DOCUMENT.
3. THERE IS A FLUVIAL STUDY WHICH ILLUSTRATES THAT THERE MAY BE ADVERSE IMPACTS TO THIS STUDY AREA FROM MOVEMENT FROM THE ADJACENT CREEK. THE DEVELOPER ACKNOWLEDGES THAT UNTIL BANK STABILIZATION IS IMPLEMENTED THAT THERE ARE CONCEPTUAL RISKS TO THE SITE.
4. ALL STORM INFRASTRUCTURE IS PUBLIC AND SIZED FOR THE 100 YEAR STORM, UNLESS OTHERWISE NOTED.
5. ZANTE STREET IS ENTIRELY VERTICAL, 6' CATCH CURB.
6. ANY FUTURE DEVELOPMENT IN THE PLANNING AREA WILL REQUIRE PERPETUATION OF EMERGENCY OVERFLOWS THROUGH THEIR SITE.

NO WORK IS ALLOWED IN THE FLOODPLAIN WITHOUT A FLOODPLAIN DEVELOPMENT PERMIT. NO WORK IS ALLOWED WITHIN THE FLOODWAY WITHOUT A CLOMPR OR A NO RISE ANALYSIS INCLUDED WITHIN THE FLOODPLAIN DEVELOPMENT PERMIT.



2021-09-11 (4:30 PM) X:\21-134 Murphy Creek\Civil\CAD\Plans\Zante Street\Drainage Proposed Drainage Basins.dwg



Know what's below.  
Call before you dig.



#	REVISION DESCRIPTION	DATE	BY

MURPHY CREEK - ZANTE STREET

AURORA, COLORADO

PROPOSED DRAINAGE PLAN 2

NOT FOR  
CONSTRUCTION

DESIGNED BY: GP  
DRAWN BY: GP  
CHECKED BY: JK

JOB NO.  
21-134

SHEET  
3

CORE CONSULTANTS, INC.  
3473 S. BROADWAY  
DENVER, CO 80113  
303.703.4444  
LIVEYOURCORE.COM

LAND DEVELOPMENT  
ENERGY  
PUBLIC INFRASTRUCTURE

CORE