



NORTH ELEVATION

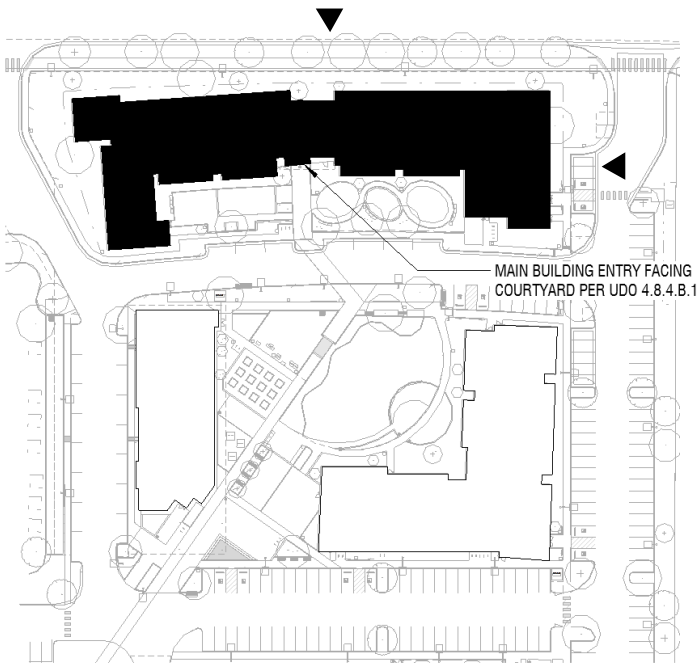
1"=30'-0"



EAST ELEVATION

1"=30'-0"

KEY PLAN



BUILDING A - COLORED ELEVATIONS

KING'S CROSSING CORNER
AURORA, COLORADO

shopworks
architecture



SOUTH ELEVATION

1"=30'-0"

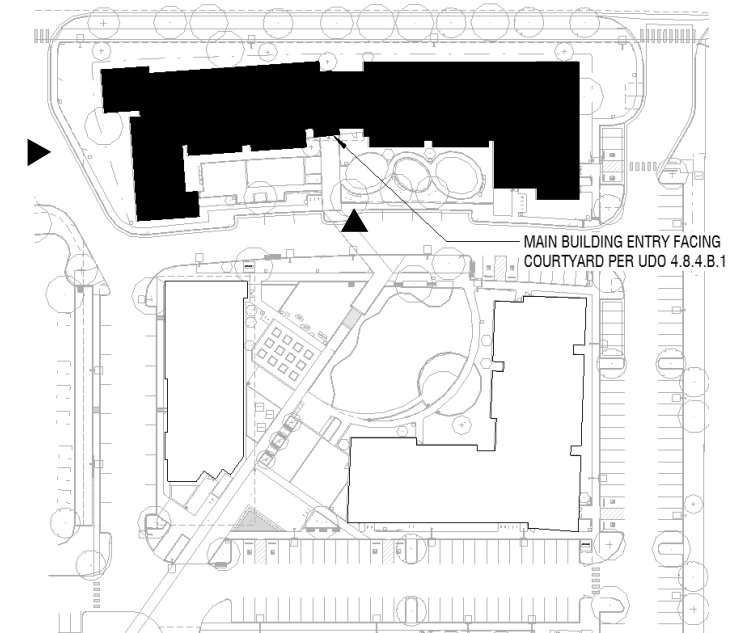
MAIN BUILDING ENTRY
FACING COURTYARD
PER UDO 4.8.4.B.1



WEST ELEVATION

1"=30'-0"

KEY PLAN



BUILDING A - COLORED ELEVATIONS

KING'S CROSSING CORNER
AURORA, COLORADO

shopworks
architecture



EAST ELEVATION

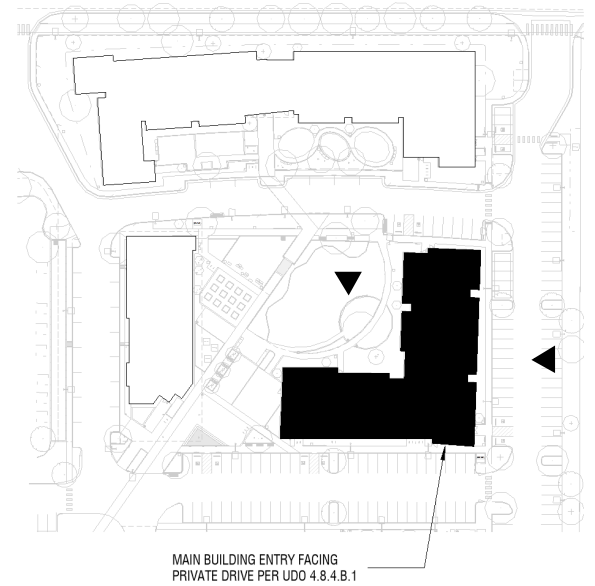
1"=20'-0"



NORTH ELEVATION

1"=20'-0"

KEY PLAN



BUILDING B - COLORED ELEVATIONS

KING'S CROSSING CORNER
AURORA, COLORADO

s h o p w o r k s
architecture

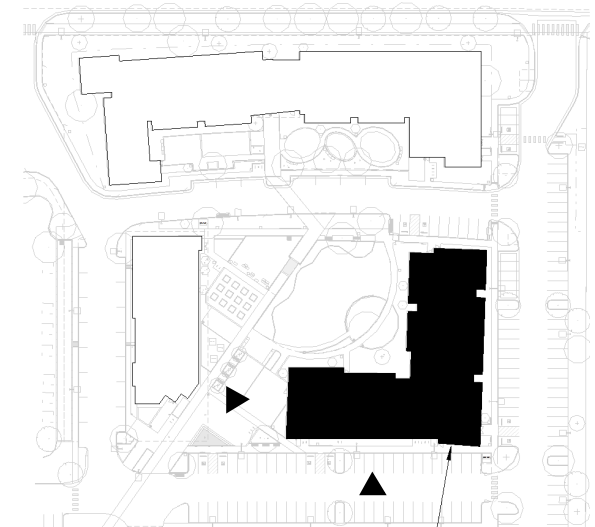


SOUTH ELEVATION

1"=20'-0"

MAIN BUILDING ENTRY
FACING PRIVATE DRIVE
PER UDO 4.8.4.B.1

KEY PLAN



MAIN BUILDING ENTRY FACING
PRIVATE DRIVE PER UDO 4.8.4.B.1



WEST ELEVATION

1"=20'-0"

BUILDING B - COLORED ELEVATIONS

KING'S CROSSING CORNER
AURORA, COLORADO

shopworks
architecture



EAST ELEVATION

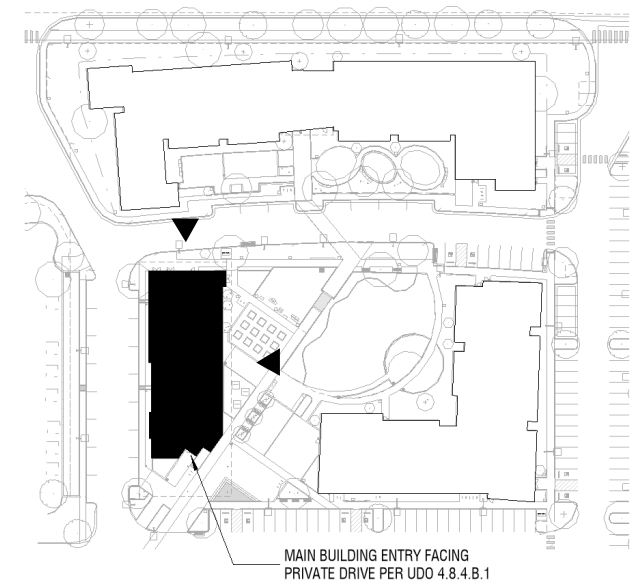
1"=20'-0"



NORTH ELEVATION

1"=20'-0"

KEY PLAN



BUILDING C - COLORED ELEVATIONS

KING'S CROSSING CORNER
AURORA, COLORADOH

s h o p w o r k s
a r c h i t e c t u r e



WEST ELEVATION

1"=20'-0"

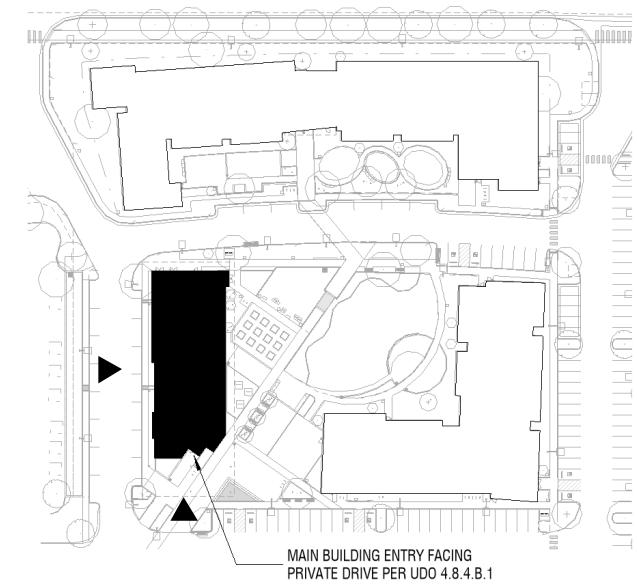


MAIN BUILDING ENTRY
FACING PRIVATE DRIVE
PER UDO 4.8.4.B.1

SOUTH ELEVATION

1"=20'-0"

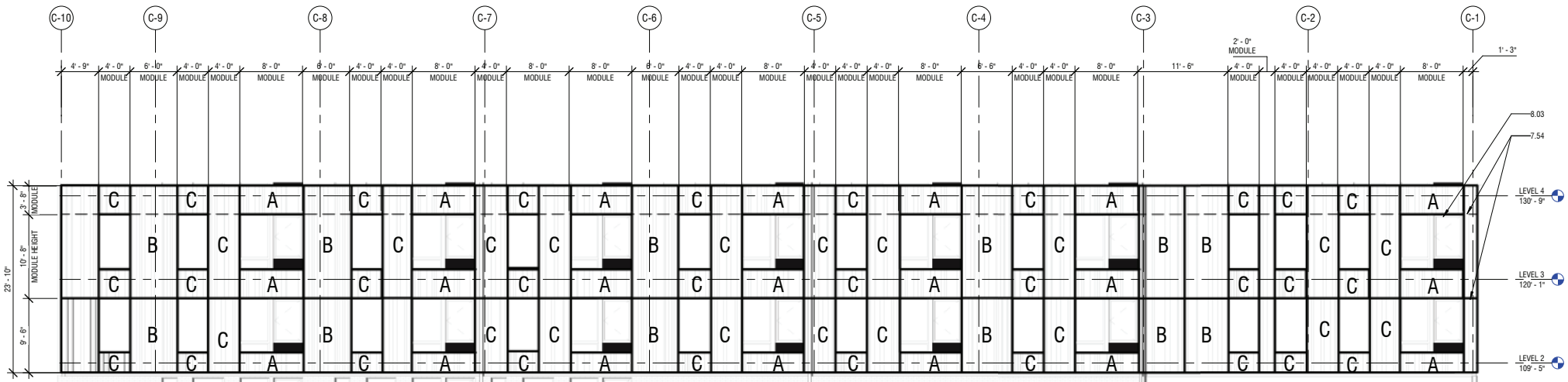
KEY PLAN



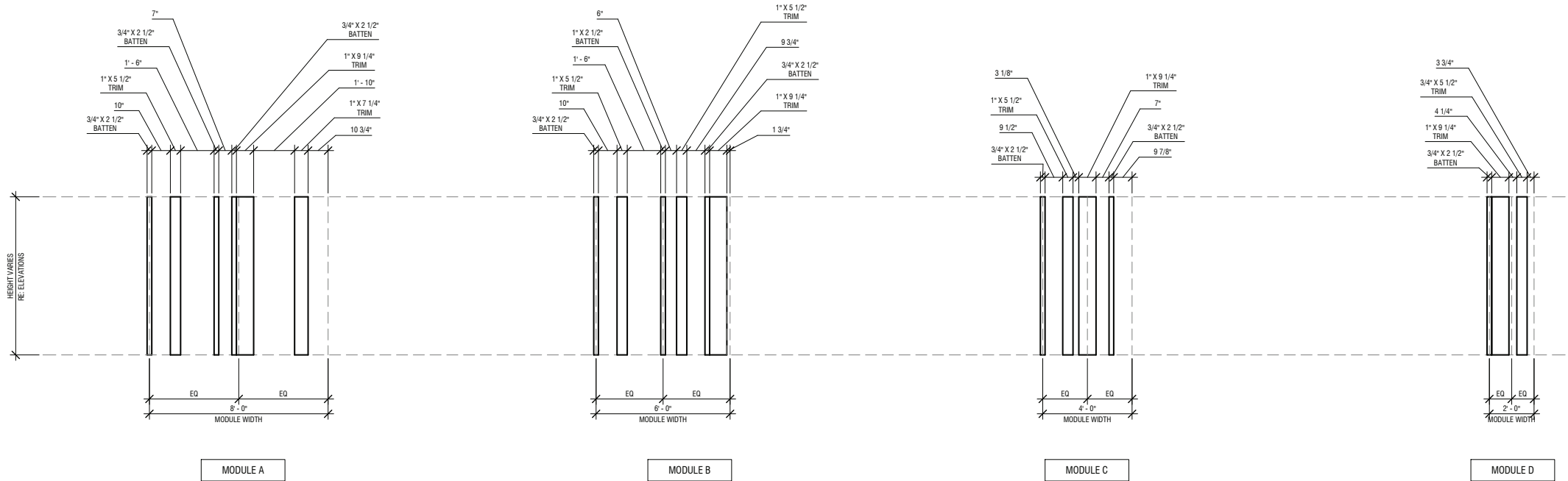
BUILDING C - COLORED ELEVATIONS

KING'S CROSSING CORNER
AURORA, COLORADO

s h o p w o r k s
architecture



D6 WEST ENLARGED ELEVATION
1/8" = 1'-0"



B6 BOARD AND BATTEN PATTERNING ELEVATIONS
3/8" = 1'-0"

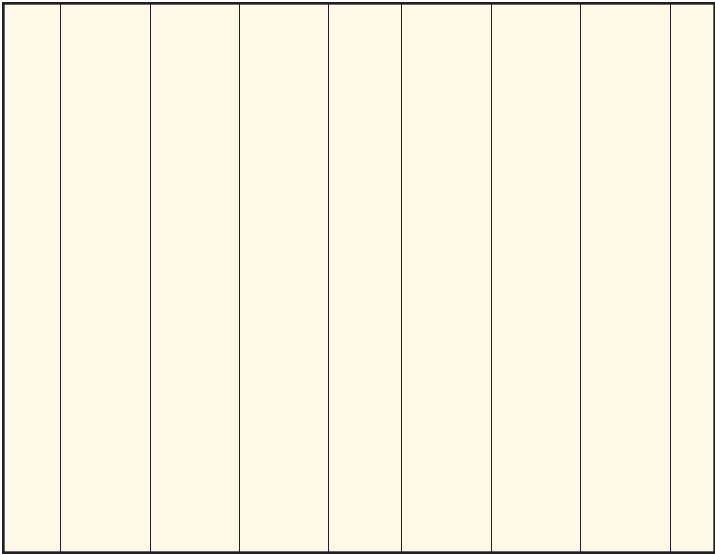
KEYNOTES PER SHEET	
Key Value	Keynote Text
7.54	PREFINISHED METAL Z-FLASHING
8.03	VINYL WINDOW, TYP. U.N.O.; RE: WINDOW TYPES AND ELEVATIONS

ELEVATIONS MATERIAL LEGEND	
	SD-01_BOARD AND BATTEN - 24" OC
	SD-02_BOARD AND BATTEN - 12" OC
	SD-03_BOARD AND BATTEN PATTERNING
	MU-01 MASONRY - CONCRETE MASONRY UNIT
	(BR-1) STACKED BRICK - BEIGE

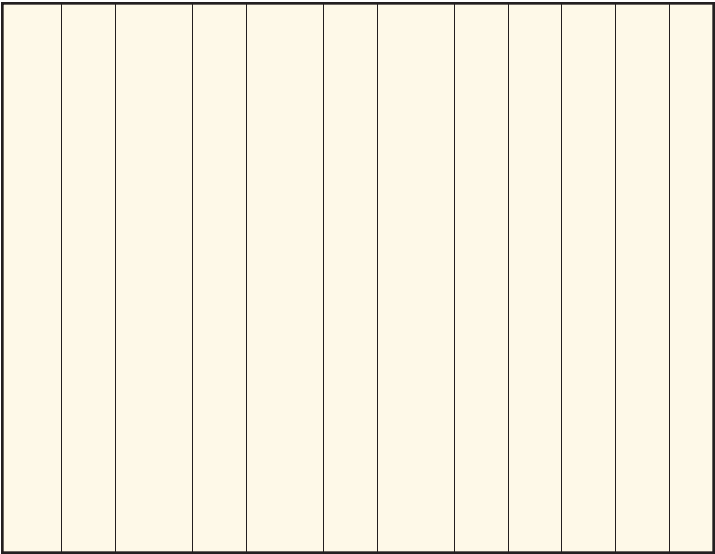
BOARD AND BATTEN PATTERN NOTES

PATTERNING RULES:

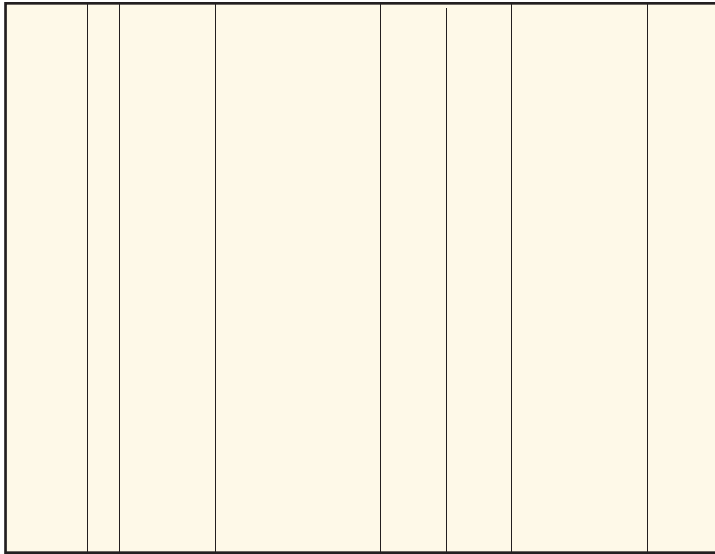
- SEE IMAGE FOR DESIGN INTENT:
 - RANDOM INSTALLATION OF BATTEN BOARDS AND TRIMS USING THE FOLLOWING BATTEN AND TRIM WIDTHS: 2 1/2", 3 1/2", 5 1/2", 7 1/4", 9 1/4", 11 1/4".
 - ~ 2/3 OF UNDERLYING VERTICAL PANEL BOARD (0.312") TO BE COVERED BY BATTEN BOARDS (.75").
 - PLACEMENT / LAYOUT IN EACH SECTION MUST FOLLOW.
- BATTEN MODULE WIDTHS DO NOT REPEAT (DO NOT INSTALL SAME BATTEN MODULE TWICE IN SEQUENCE).
- GAPS BETWEEN BATTENS DO NOT REPEAT (DO NOT USE THE SAME GAP MORE THAN TWICE IN A SEQUENCE).
- AVOID LINING UP BATTENS MAKING VERTICAL CONNECTIONS BETWEEN LEVELS.
- INSTALL BATTEN/TRIM AT EACH SIDE OF WINDOWS. BATTENS MUST BE DIFFERENT PER WINDOW.



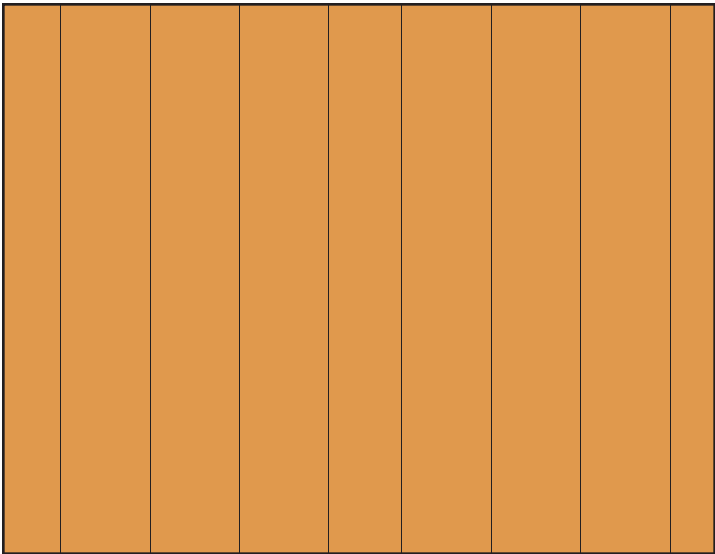
VERTICAL BOARD AND BATTEN - 24" O.C.
SD-1



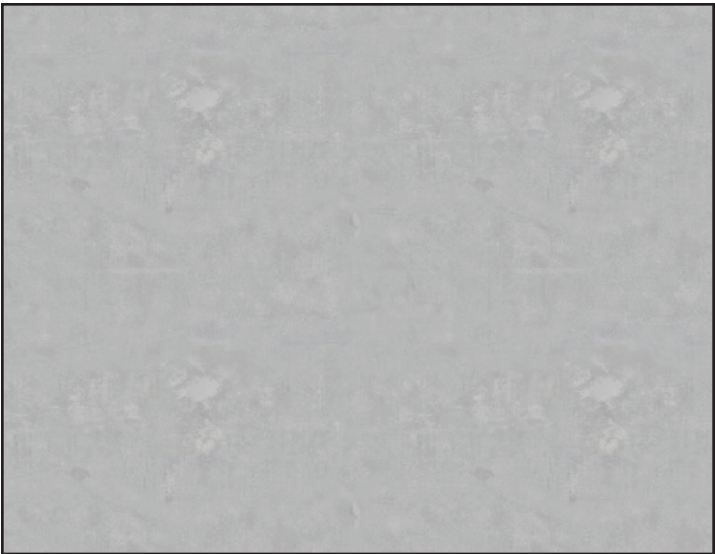
VERTICAL BOARD AND BATTEN - 12" O.C.
SD-2



VERTICAL BOARD AND BATTEN- RANDOM PATTERN
SD-3



VERTICAL BOARD AND BATTEN - 24" O.C.
SD-4



CONCRETE
C-1



MASONRY BRICK
M-1

MATERIAL LEGEND

- SD-1

MATERIAL: SIDING
COLOR TBD
- SD-2

MATERIAL: SIDING
COLOR TBD
- SD-3

MATERIAL: SIDING
COLOR TBD
- SD-4

MATERIAL: SIDING
COLOR TBD
- C-1

MATERIAL: CONCRETE
- M-1

MATERIAL: BRICK MASONRY
COLOR TBD