

6/17/2025

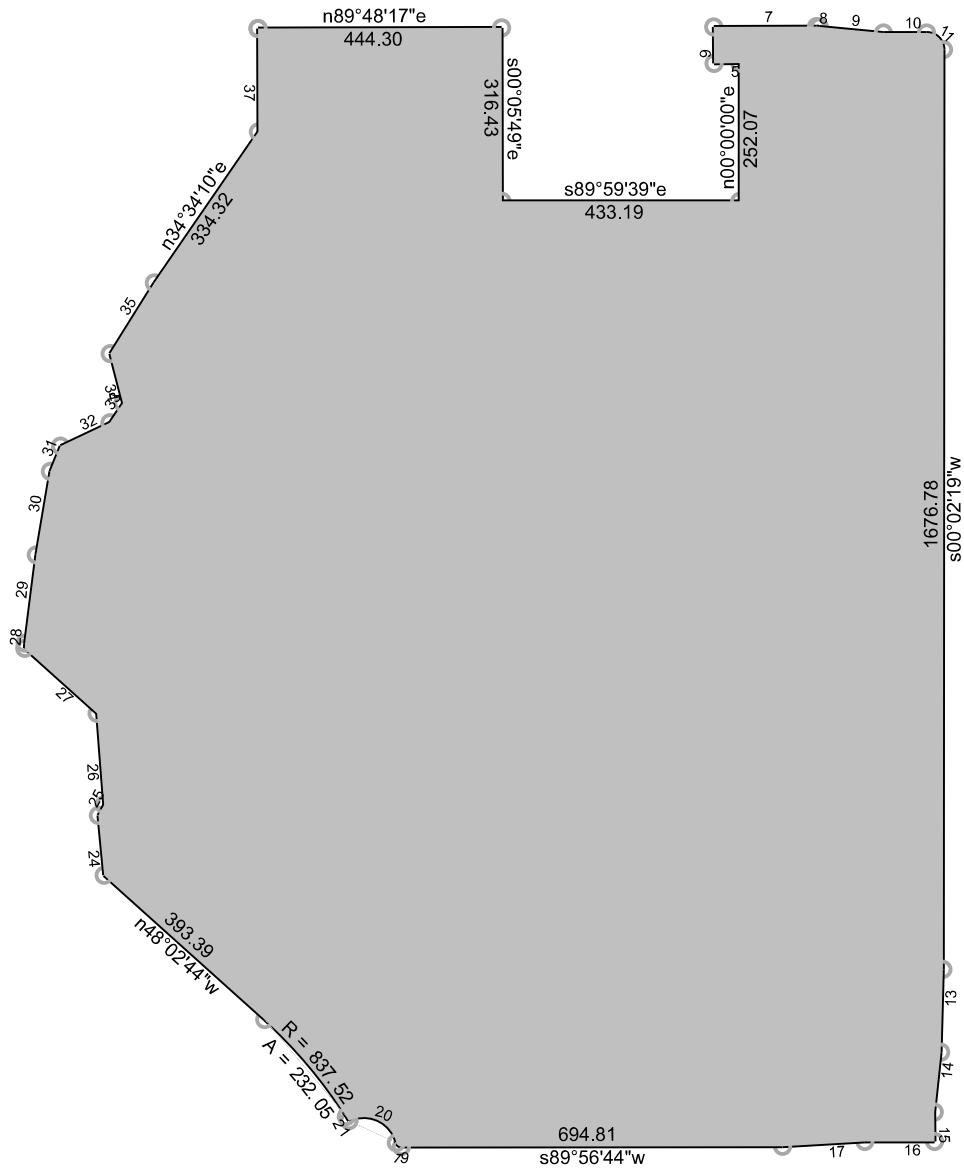
Scale: 1 inch= 750 feet

File: Overall Legal.ndp

Tract 1: 165.9483 Acres (7228718Sq. Feet), Closure: s87.3437w 0.01 ft. (1/9844164), Perimeter=13989 ft.

01 s89.5646w 1152.03
 02 Lt, r=709.41, delta=020.4423, arc=256.79, chord=n37.4032w 255.39
 03 n48.0244w 400.00
 04 Lt, r=2951.16, delta=037.5351, arc=1952.00, chord=n66.5939w 1916.61
 05 n85.5635w 1131.23
 06 n89.3909w 202.38
 07 n83.5945w 607.81
 08 n00.0233w 796.34
 09 n89.5548e 72.00
 10 n89.4817e 2642.11
 11 n89.4817e 2534.09

12 s00.1143e 68.50
 13 n89.4817e 52.95
 14 Rt, r=20.00, delta=090.1404, arc=31.50, chord=s45.0442e 28.34
 15 s00.0219w 1699.32
 16 s01.2715w 150.63
 17 s06.0333w 110.13
 18 s00.2110e 128.69



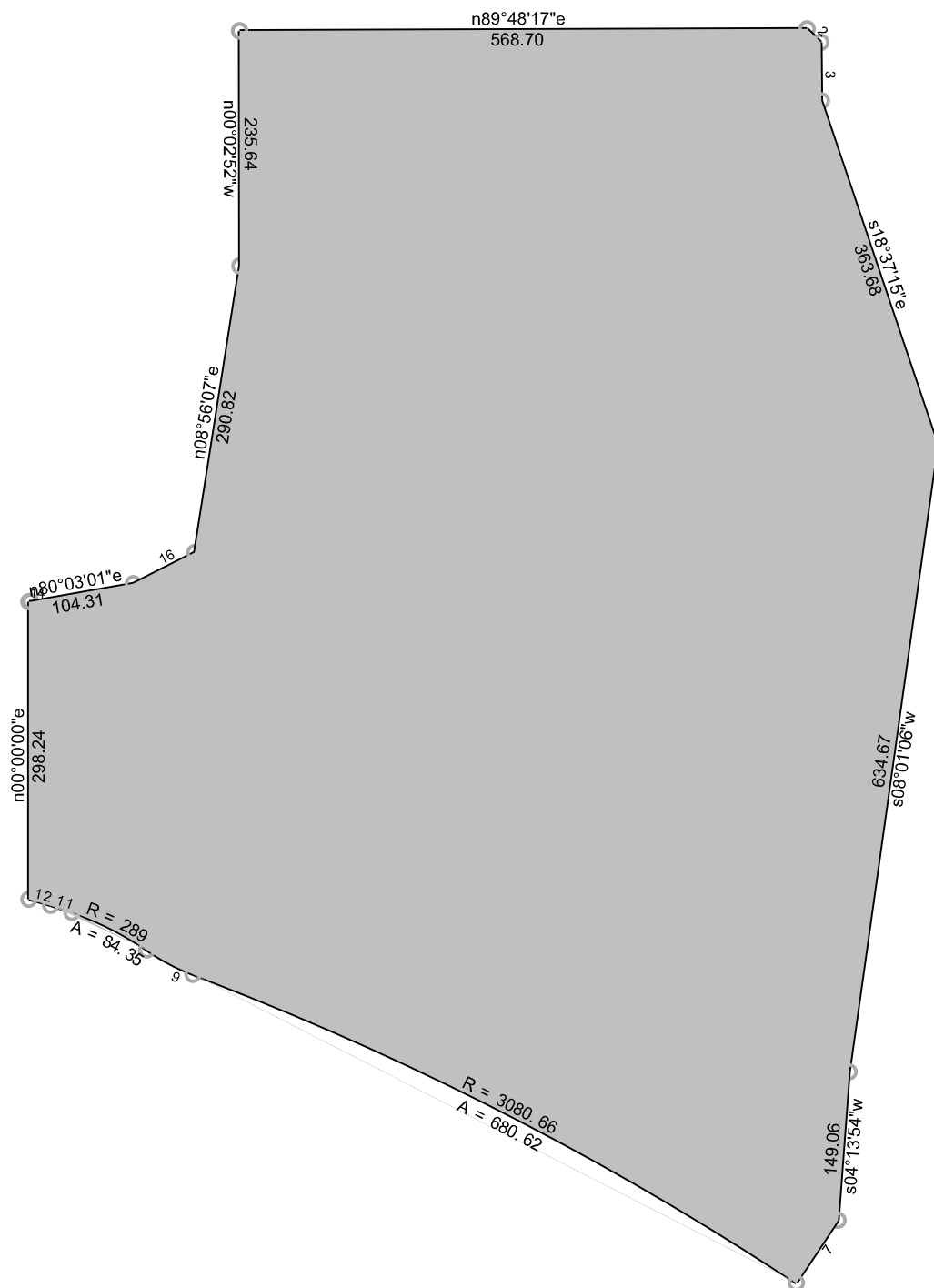
6/17/2025

Scale: 1 inch= 350 feet

File: Lot 1, Block 1.ndp

Tract 1: 64.0169 Acres (796101Sq. Feet), Closure: s05.4452e 0.01 ft. (1/560237), Perimeter=7477 ft.

01 n89.4817e 444.30	23 n48.0244w 393.39
02 s00.0549e 316.43	24 n05.2744w 109.47
03 s89.5939e 433.19	25 n27.2248e 22.04
04 n00.0000e 252.07	26 n04.2336w 167.37
05 s89.2858w 46.88	27 n47.5838w 177.16
06 n00.2728w 66.14	28 n04.1705e 9.36
07 n89.4817e 187.68	29 n07.0841e 162.23
08 Rt, r=50.00, delta=005.4421, arc=5.01, chord=s87.1933e 5.01	30 n09.3239e 154.17
09 s84.2722e 117.49	31 n22.0729e 49.62
10 n89.4817e 78.75	32 n64.4627e 99.50
11 Rt, r=30.50, delta=090.1402, arc=48.03, chord=s45.0442e 43.22	33 n33.3448e 43.25
12 s00.0219w 1676.78	34 n14.3518w 93.06
13 s01.2715w 150.63	35 n31.5348e 152.04
14 s06.0333w 110.13	36 n34.3410e 334.32
15 s00.2110e 53.31	37 n00.1143w 188.39
16 s89.5709w 127.07	
17 s86.3308w 150.15	
18 s89.5644w 694.81	
19 Rt, r=9.50, delta=076.4713, arc=12.73, chord=n51.3939w 11.80	
20 Lt, r=60.50, delta=103.3634, arc=109.40, chord=n65.0420w 95.09	
21 Rt, r=106.15, delta=004.4809, arc=8.90, chord=n32.3851w 8.89	
22 Lt, r=837.52, delta=015.5229, arc=232.05, chord=n40.0653w 231.31	



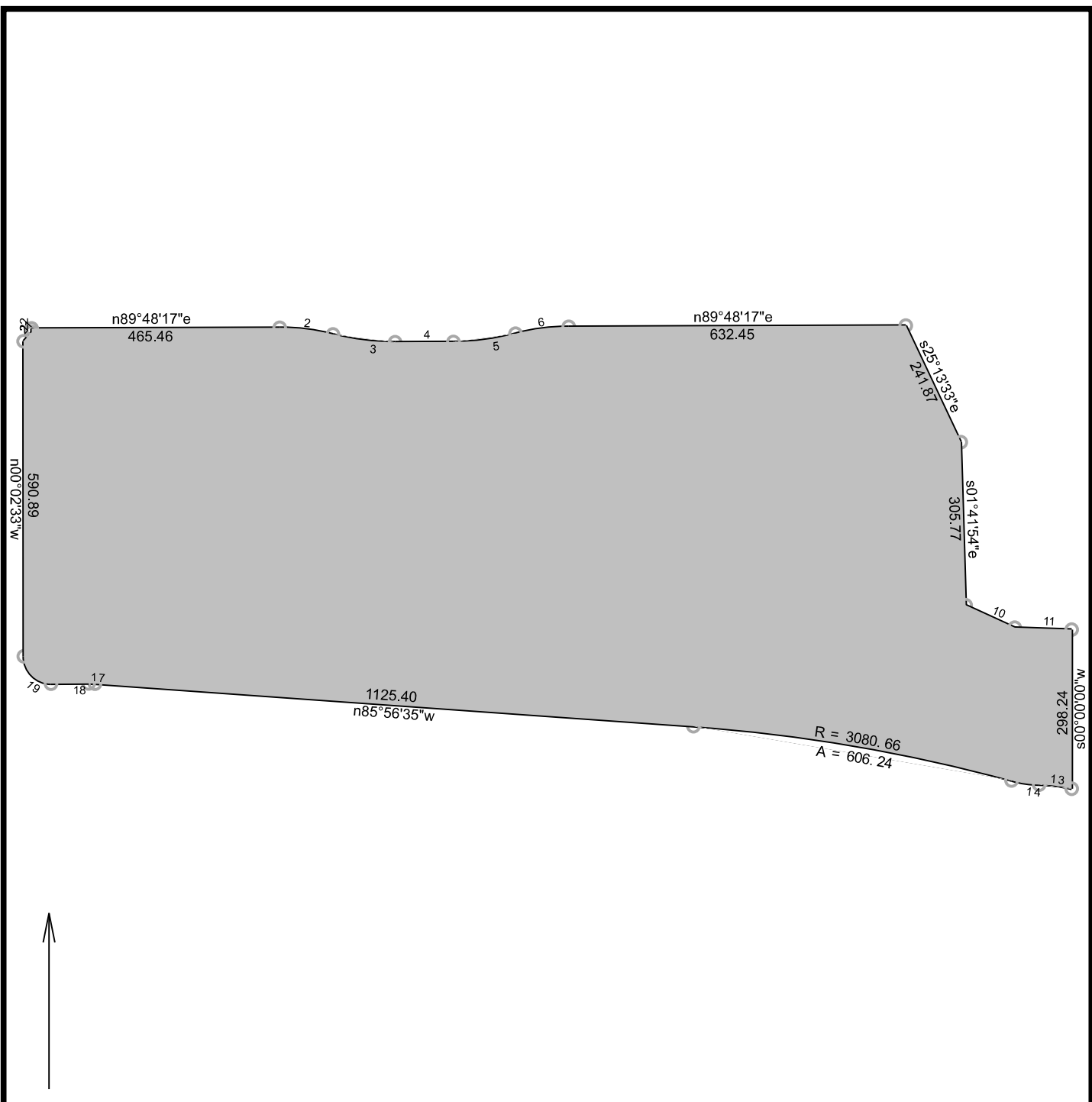
6/17/2025

Scale: 1 inch= 175 feet

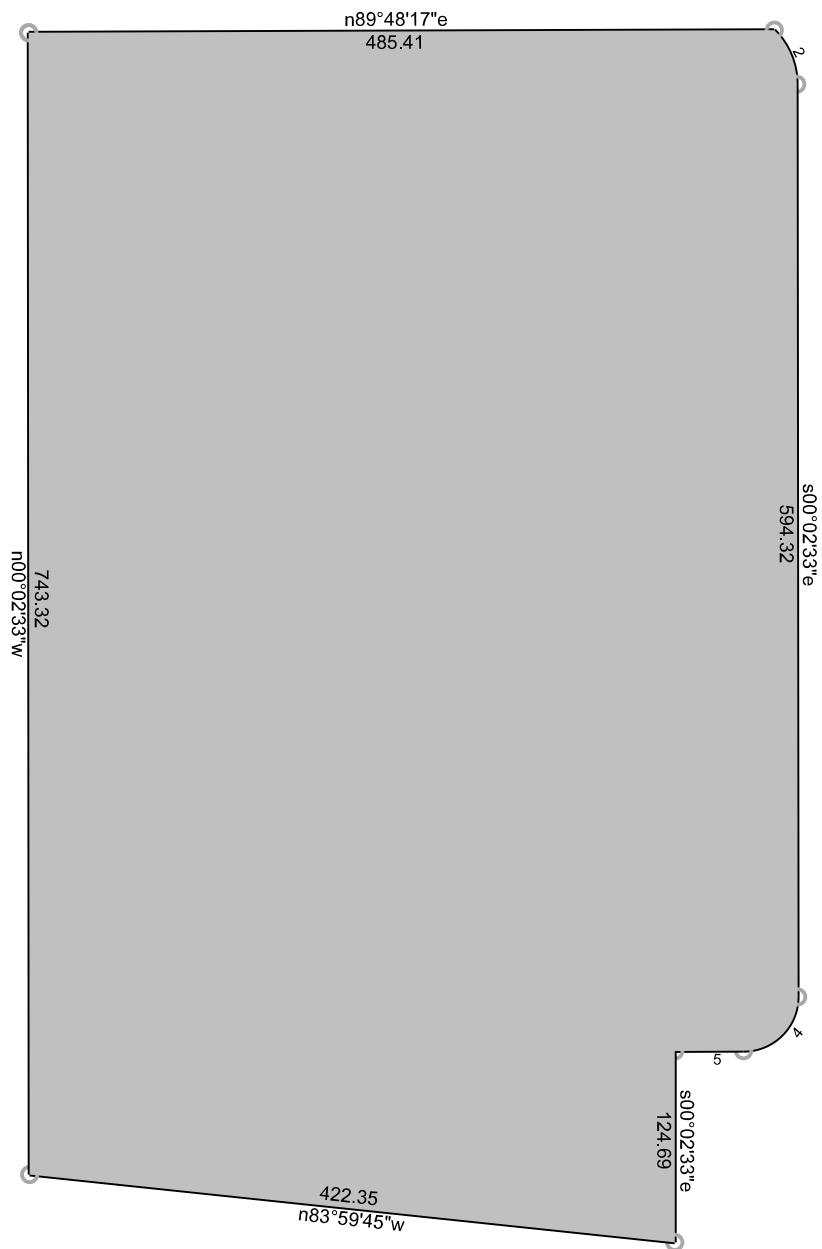
File: Lot 2, Block 1.ndp

Tract 1: 18.2761 Acres (796101Sq. Feet), Closure: s47.1339e 0.01 ft. (1/660807), Perimeter=3732 ft.

01 n89.4817e 568.70	12 Lt, r=289.00, delta=004.3039, arc=22.75, chord=n74.2506w 22.75
02 s45.3206e 19.33	13 n00.0000e 298.24
03 s00.3206e 58.44	14 s88.0242e 2.04
04 s18.3715e 363.68	15 n80.0301e 104.31
05 s08.0106w 634.67	16 n63.0914e 68.89
06 s04.1354w 149.06	17 n08.5607e 290.82
07 s33.3355w 75.33	18 n00.0252w 235.64
08 Lt, r=3080.66, delta=012.3931, arc=680.62, chord=n62.5457w 679.24	
09 Rt, r=211.00, delta=014.1303, arc=52.36, chord=n62.0811w 52.22	
10 Lt, r=289.00, delta=016.4322, arc=84.35, chord=n63.2320w 84.05	
11 Lt, r=3098.66, delta=000.2446, arc=22.32, chord=n71.5723w 22.32	



		6/17/2025	
Scale: 1 inch= 275 feet		File: Lot 3, Block 1.ndp	
Tract 1: 30.2529 Acres (1317827Sq. Feet), Closure: n58.4737w 0.01 ft. (1/565985), Perimeter=5327 ft.			
01 n89.4817e 465.46		15 Lt, r=3080.66, delta=011.1630, arc=606.24, chord=n80.1820w 605.25	
02 Rt, r=392.00, delta=014.4450, arc=100.90, chord=s82.4919e 100.62		16 n85.5635w 1125.40	
03 Lt, r=458.00, delta=014.4450, arc=117.88, chord=s82.4919e 117.56		17 Lt, r=166.00, delta=004.0559, arc=11.88, chord=n87.5934w 11.88	
04 n89.4817e 109.22		18 s89.5727w 70.51	
05 Lt, r=458.00, delta=014.4450, arc=117.88, chord=n82.2552e 117.56		19 Rt, r=51.00, delta=090.0000, arc=80.11, chord=n45.0233w 72.12	
06 Rt, r=392.00, delta=014.4450, arc=100.90, chord=n82.2552e 100.62		20 n00.0233w 590.89	
07 n89.4817e 632.45		21 n40.5816e 22.70	
08 s25.1333e 241.87		22 n00.0000e 6.76	
09 s01.4154e 305.77			
10 s65.2314e 101.13			
11 s88.0242e 106.96			
12 s00.0000w 298.24			
13 Lt, r=289.00, delta=012.1243, arc=61.60, chord=n82.4646w 61.48			
14 Rt, r=211.00, delta=014.1303, arc=52.36, chord=n81.4636w 52.22			



6/17/2025

Scale: 1 inch= 125 feet

File: Lot 4, Block 1.ndp

Tract 1: 8.5973 Acres (374496 Sq. Feet), Closure: n00.0000e 0.00 ft. (1/999999), Perimeter=2509 ft.

01 n89.4817e 485.41

08 n00.0233w 743.32

02 Rt, r=49.50, delta=045.0859, arc=39.01, chord=s22.3703e 38.01

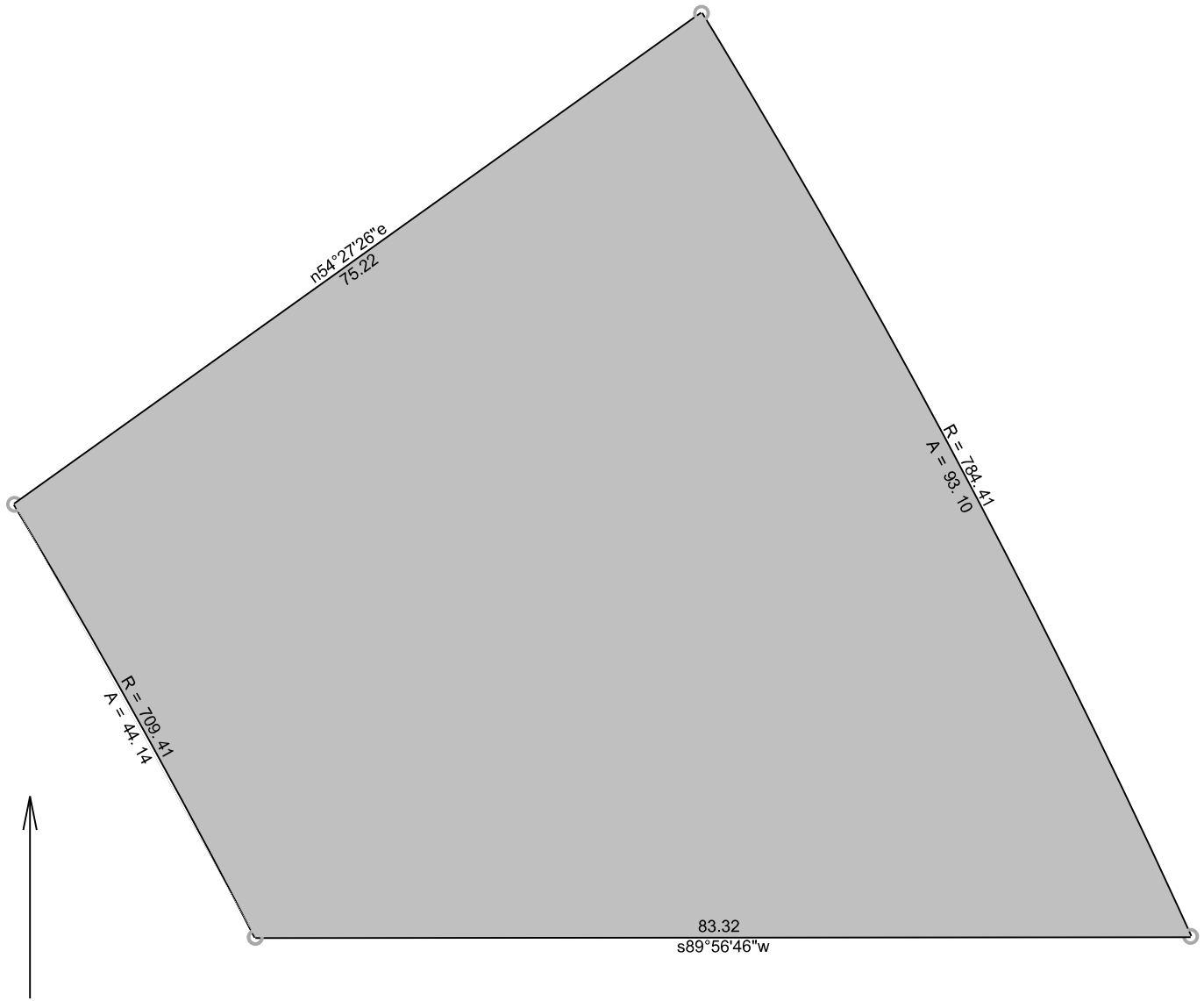
03 s00.0233e 594.32

04 Rt, r=35.00, delta=090.2325, arc=55.22, chord=s45.0909w 49.67

05 s89.5727w 44.76

06 s00.0233e 124.69

07 n83.5945w 422.35



6/17/2025

Scale: 1 inch= 15 feet

File: Lot 5, Block 1.ndp

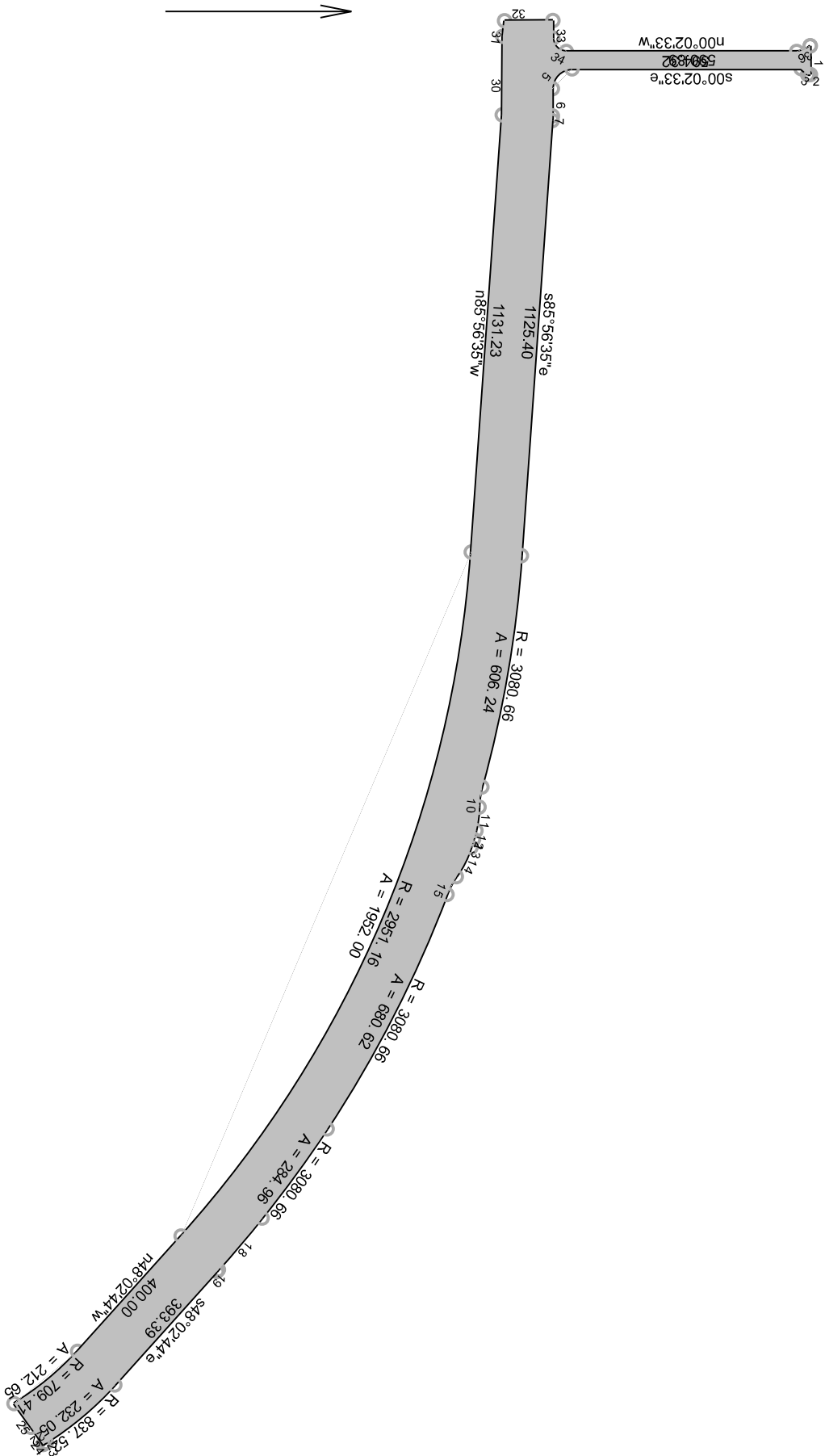
Tract 1: 0.1183 Acres (5151 Sq. Feet), Closure: n78.4432e 0.01 ft. (1/48283), Perimeter=296 ft.

01 Lt, r=709.41, delta=003.3353, arc=44.14, chord=n29.0517w 44.13

02 n54.2726e 75.22

03 Rt, r=784.41, delta=006.4800, arc=93.10, chord=s27.5505e 93.04

04 s89.5646w 83.32



Scale: 1 inch= 400 feet

File: Tract A.ndp

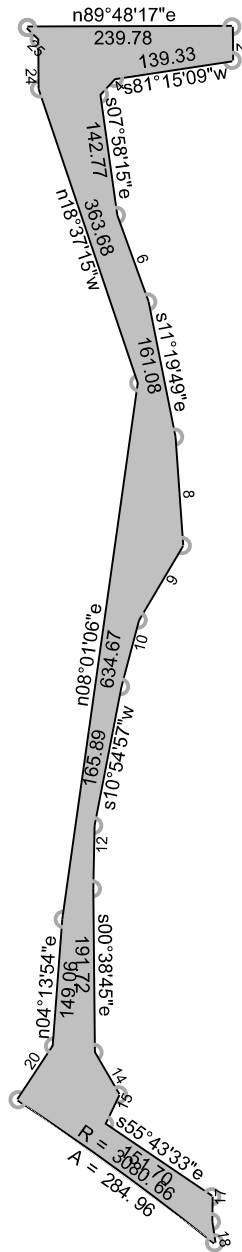
6/17/2025

Tract 1: 12.6633 Acres (551614sq. Feet), Closure: s37.4202e 0.02 ft. (1/550823), Perimeter=9592 ft.

Tract Data and Deed Calls: File= Tract A.ndp

Tract 01: 12.6633 Acres, Closure: s37.4202e 0.02 ft. (1/550823), Perimeter=9592 ft.

1: n89.4817e 73.99
2: s00.0000w 6.76
3: s40.5816w 22.70
4: s00.0233e 590.89
5: curve left radius 51.00 arc 80.11 delta 090.0000 chord s45.0233e 72.12
6: n89.5727e 70.51
7: curve right radius 166.00 arc 11.88 delta 004.0559 chord s87.5934e 11.87
8: s85.5635e 1125.40
9: curve right radius 3080.66 arc 606.24 delta 011.1630 chord s80.1820e 605.26
10: curve left radius 211.00 arc 52.36 delta 014.1303 chord s81.4636e 52.22
11: curve right radius 289.00 arc 61.60 delta 012.1243 chord s82.4646e 61.48
12: curve right radius 289.00 arc 22.75 delta 004.3039 chord s74.2506e 22.75
13: curve right radius 3098.66 arc 22.32 delta 000.2446 chord s71.5723e 22.32
14: curve right radius 289.00 arc 84.35 delta 016.4322 chord s63.2320e 84.05
15: curve left radius 211.00 arc 52.36 delta 014.1303 chord s62.0811e 52.22
16: curve right radius 3080.66 arc 680.62 delta 012.3931 chord s62.5457e 679.23
17: curve right radius 3080.66 arc 284.96 delta 005.1759 chord s53.5612e 284.86
18: curve right radius 3080.66 delta 003.1428 chord dir s49.3958e chord dist 174.25
19: s48.0244e 6.61
20: s48.0244e 393.39
21: curve right radius 837.52 arc 232.05 delta 015.5229 chord s40.0653e 231.31
22: curve left radius 106.15 arc 8.90 delta 004.4809 chord s32.3851e 8.90
23: curve left radius 60.50 arc 0.36 delta 000.2038 chord s62.5705w 0.36
24: s54.2726w 54.37
25: s54.2726w 75.22
26: curve left radius 709.41 arc 212.65 delta 017.1030 chord n39.2729w 211.86
27: n48.0244w 400.00
28: curve left radius 2951.16 arc 1952.00 delta 037.5351 chord n66.5939w 1916.61
29: n85.5635w 1131.23
30: n89.3909w 202.38
31: n83.5945w 40.66
32: n00.0233w 124.69
33: n89.5727e 44.76
34: curve left radius 35.00 arc 55.22 delta 090.2325 chord n45.0909e 49.67
35: n00.0233w 594.32
36: curve left radius 49.50 arc 39.01 delta 045.0859 chord n22.3703w 38.01



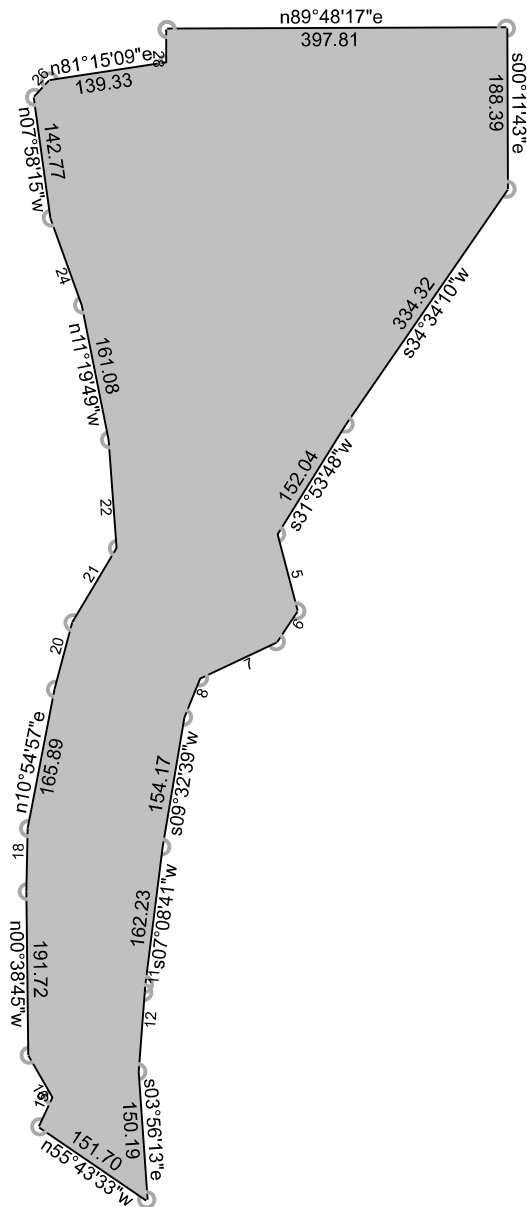
6/17/2025

Scale: 1 inch= 225 feet

File: Tract C.ndp

Tract 1: 1.7207 Acres (74952 Sq. Feet), Closure: n13.0240e 0.02 ft. (1/194290), Perimeter=3485 ft.

01 n89.4817e 239.78	17 s00.3447w 29.29
02 s00.1143e 39.34	18 s09.0725e 24.84
03 s81.1509w 139.33	19 Lt, r=3080.66, delta=005.1759, arc=284.96, chord=n53.5612w 284.85
04 s42.5047w 25.99	20 n33.3355e 75.33
05 s07.5815e 142.77	21 n04.1354e 149.06
06 s19.4610e 108.16	22 n08.0106e 634.67
07 s11.1949e 161.08	23 n18.3715w 363.68
08 s04.0444e 127.65	24 n00.3206w 58.44
09 s30.4327w 101.43	25 n45.3206w 19.33
10 s14.5120w 80.82	
11 s10.5457w 165.89	
12 s01.1746w 74.12	
13 s00.3845e 191.72	
14 s30.1112e 57.26	
15 s25.3546w 37.98	
16 s55.4333e 151.70	



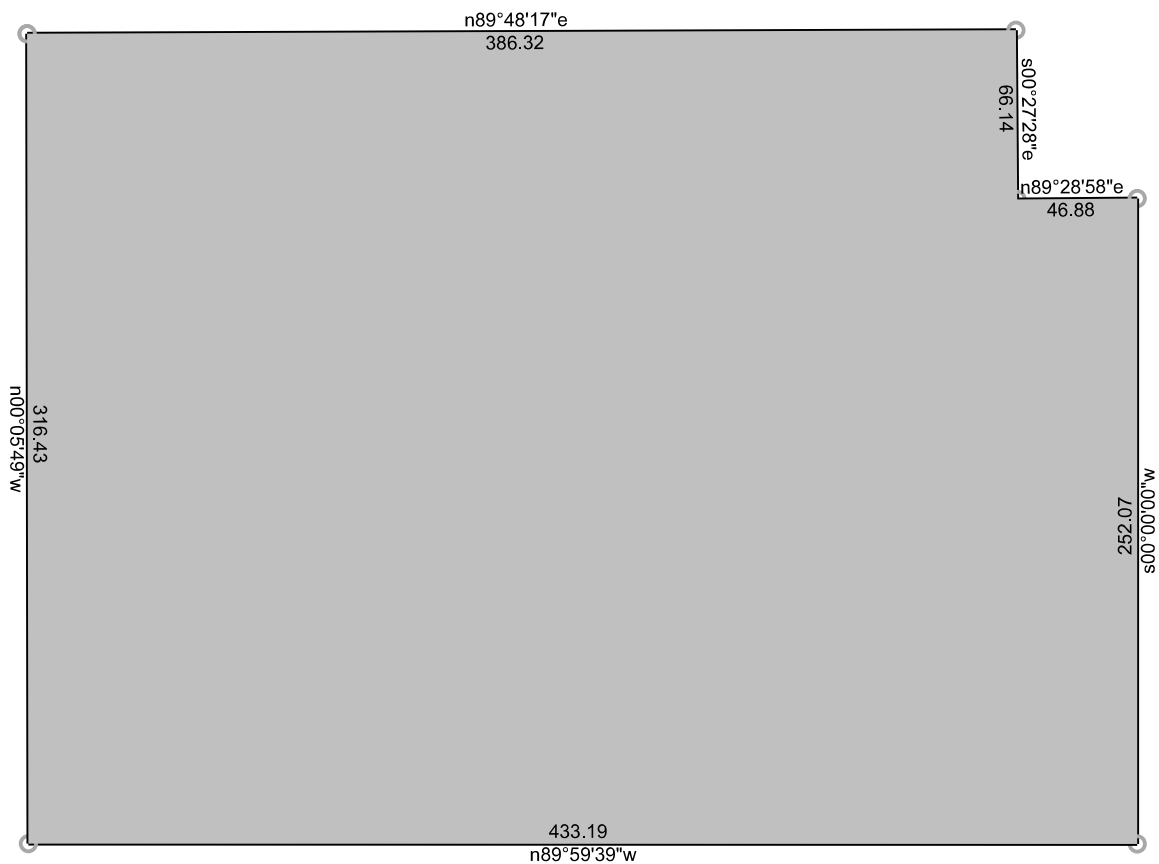
6/17/2025

Scale: 1 inch= 225 feet

File: Tract D.ndp

Tract 1: 8.1407 Acres (354610 Sq. Feet), Closure: n00.0000e 0.00 ft. (1/999999), Perimeter=3533 ft.

01 n89.4817e 397.81	18 n01.1746e 74.12
02 s00.1143e 188.39	19 n10.5457e 165.89
03 s34.3410w 334.32	20 n14.5120e 80.82
04 s31.5348w 152.04	21 n30.4327e 101.43
05 s14.3518e 93.06	22 n04.0444w 127.65
06 s33.3448w 43.25	23 n11.1949w 161.08
07 s64.4627w 99.50	24 n19.4610w 108.16
08 s22.0729w 49.62	25 n07.5815w 142.77
09 s09.3239w 154.17	26 n42.5047e 25.99
10 s07.0841w 162.23	27 n81.1509e 139.33
11 s04.1705w 9.36	28 n00.1143w 39.34
12 s04.1705w 93.43	
13 s03.5613e 150.19	
14 n55.4333w 151.70	
15 n25.3546e 37.98	
16 n30.1112w 57.26	
17 n00.3845w 191.72	



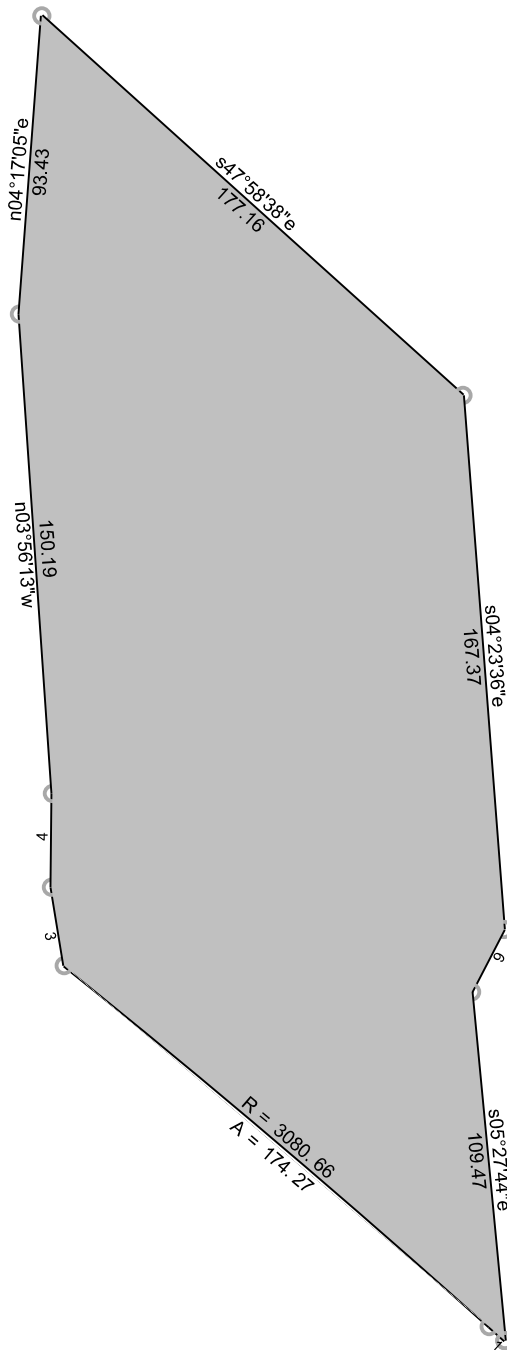
6/17/2025

Scale: 1 inch= 75 feet

File: Tract E.ndp

Tract 1: 3.0848 Acres (134376 Sq. Feet), Closure: s11.1338e 0.01 ft. (1/261876), Perimeter=1501 ft.

01 n89.4817e 386.32
02 s00.2728e 66.14
03 n89.2858e 46.88
04 s00.0000e 252.07
05 n89.5939e 433.19
06 n00.0549e 316.43



6/17/2025

Scale: 1 inch= 60 feet

File: Tract F.ndp

Tract 1: 0.9206 Acres (40100 Sq. Feet), Closure: n00.0000e 0.00 ft. (1/397486), Perimeter=955 ft.

01 n48.0244w 6.61

08 s04.2336e 167.37

02 Lt, r=3080.66, delta=003.1428, arc=174.27, chord=n49.3958w 174.24

09 s27.2248w 22.04

03 n09.0725w 24.84

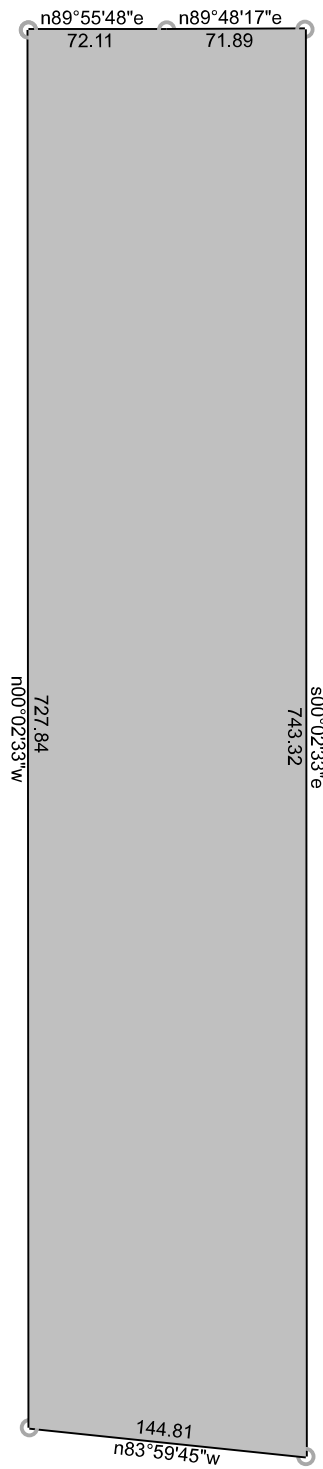
10 s05.2744e 109.47

04 n00.3447e 29.29

05 n03.5613w 150.19

06 n04.1705e 93.43

07 s47.5838e 177.16



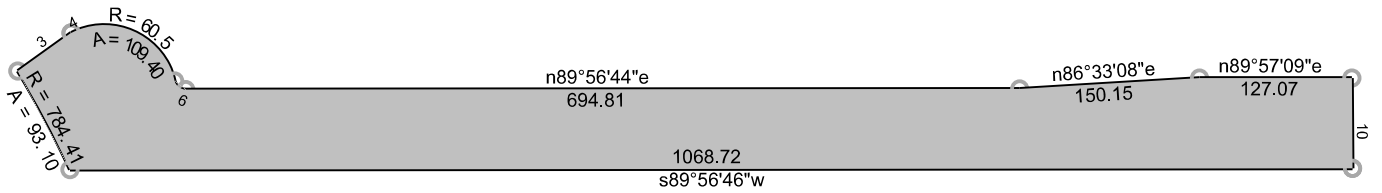
6/17/2025

Scale: 1 inch= 100 feet

File: Piccadilly Rd. ROW.ndp

Tract 1: 2.4316 Acres (105919 Sq. Feet), Closure: n00.0000e 0.00 ft. (1/381071), Perimeter=1760 ft.

01 n89.5548e 72.11
02 n89.4817e 71.89
03 s00.0233e 743.32
04 n83.5945w 144.81
05 n00.0233w 727.84



6/17/2025

Scale: 1 inch= 160 feet

File: E. 65th Ave. ROW.ndp

Tract 1: 1.8179 Acres (79187 Sq. Feet), Closure: s46.0220e 0.01 ft. (1/303831), Perimeter=2386 ft.

01 s89.5646w 1068.72

08 n86.3308e 150.15

02 Lt, r=784.41, delta=006.4800, arc=93.10, chord=n27.5505w 93.04

09 n89.5709e 127.07

03 n54.2726e 54.37

10 s00.2110e 75.37

04 Rt, r=60.50, delta=000.2038, arc=0.36, chord=n62.5705e 0.36

05 Rt, r=60.50, delta=103.3634, arc=109.40, chord=s65.0420e 95.09

06 Lt, r=9.50, delta=076.4713, arc=12.73, chord=s51.3939e 11.80

07 n89.5644e 694.81