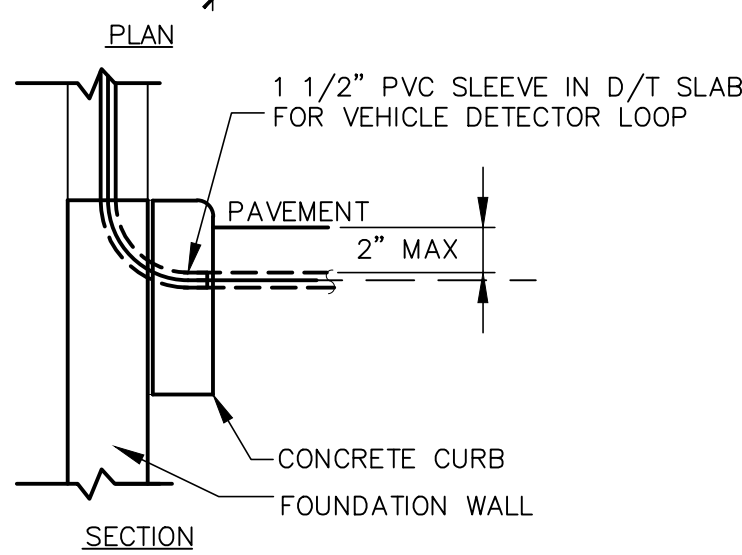


A - C.O.D. DETECTOR LOOP



**NOTE:** DETECTOR LOOPS AT PRESENTATION AND ORDER WINDOWS ARE OPTIONAL.  
GC TO COORDINATE WITH McDONALD'S ACM AND INSTALL PVC SLEEVES TO FACILITATE POSSIBLE FUTURE LOOP INSTALLATION.

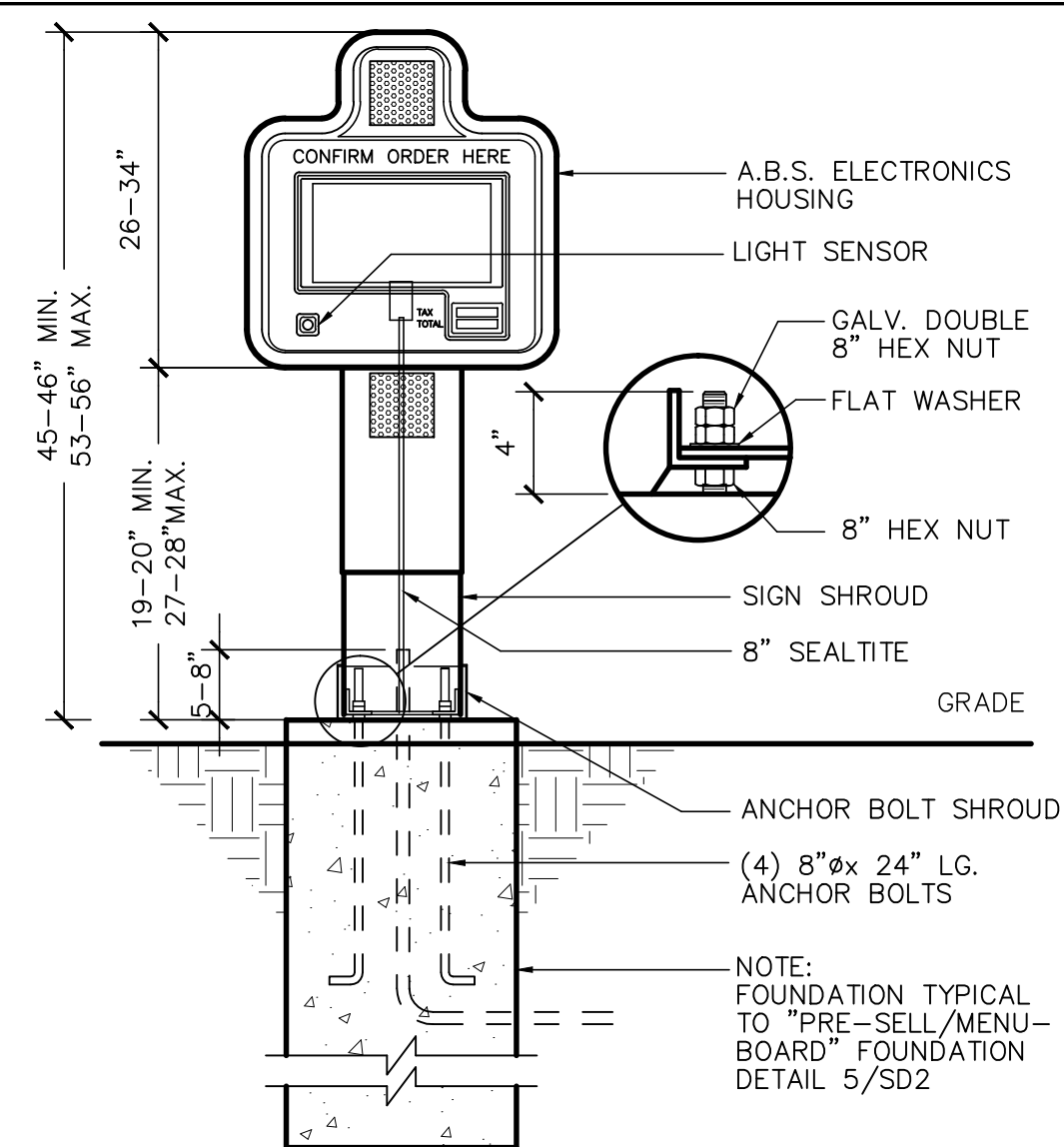
B - DT WINDOW DETECTOR LOOP

1. VERIFY CONDUIT SIZES AND LAYOUT WITH DETECTOR LOOP MANUFACTURER.
2. CENTER VEHICLE DETECTOR LOOP (ITEM # 217.11E1) IN DRIVE THRU LANE. INSTALL PER MFR. RECOMMENDATIONS.
3. SEE CIVIL FOR DIMENSIONS OF DRIVE-THRU LANE CONCRETE PAD FOR DETECTOR LOOP.
4. NO STEEL (REBAR OR ELECTRICAL WIRE) SHALL BE USED WITHIN 2' OF LOOP.

5. DETECTOR LOOP MANUFACTURERS:  
DETECTOR LOOPS MAY BE BY ONE OF THE  
FOLLOWINGS COMPANIES OR EQUAL.  
3M: 1-800-328-0033  
HME: 1-800-848-4468

6. DETECTOR LOOP MATERIAL:  
PVC TUBING 1/2" I.D. 100 PSI LOOP MADE FROM  
ONE LENGTH OF THIN FOURTEEN GAUGE STRANDED  
WIRE. LEAD-IN IS PRE-TWISTED AT FACTORY.

7. DETECTOR LOOP CONSTRUCTION:  
FORMED WITH ONE CONTINUOUS LENGTH OF PVC  
WITH NO SHARP CORNERS AS DETAILED. WIRE  
LOOPED, FORMED, & PIGTAILED AS DETAILED.



3 (COD) "CUSTOMER ORDER DISPLAY" (REFERENCE)

## SECTION

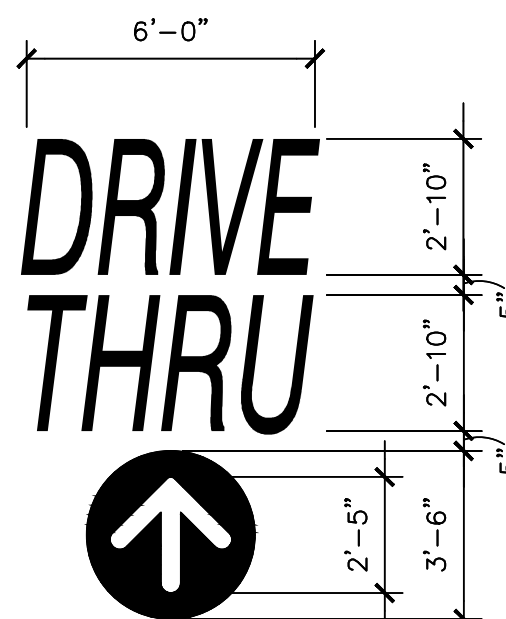
NOT TO SCALE

4 CURB RAMP DETAIL

SD1 NOT TO SCALE

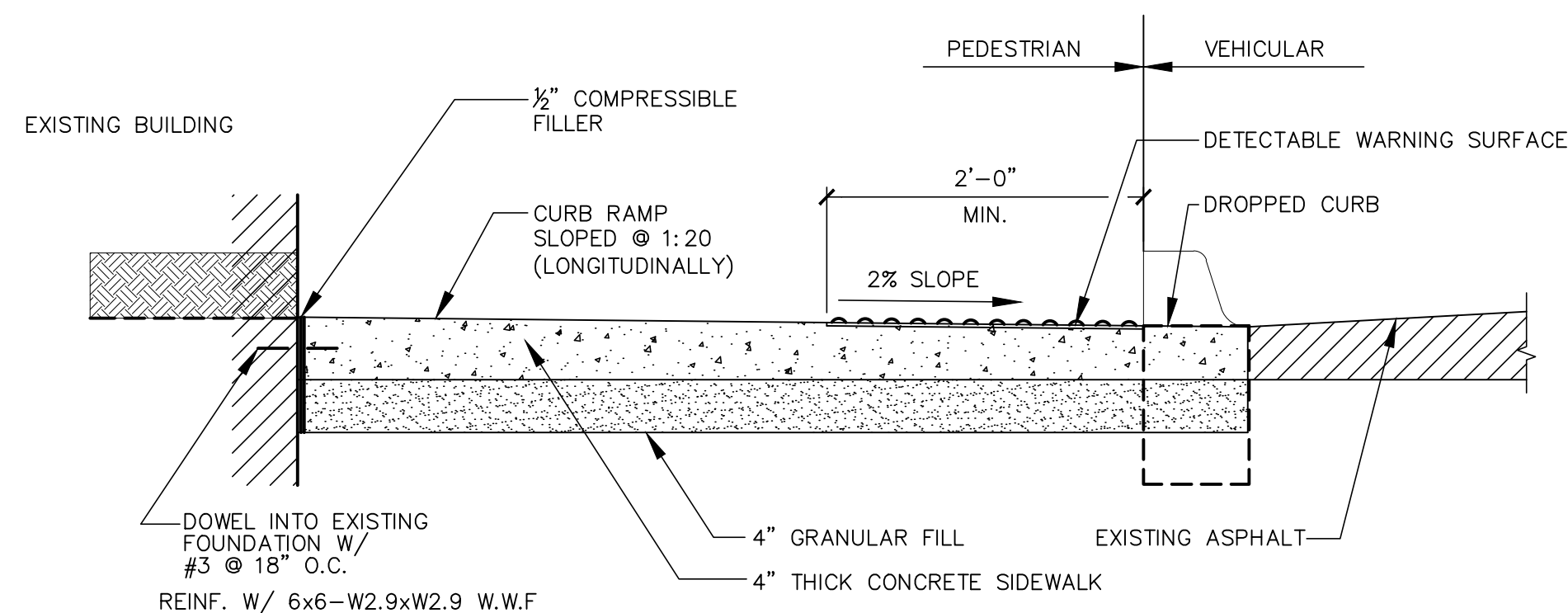
7 CONCRETE PAVEMENT JOINTS

SD1



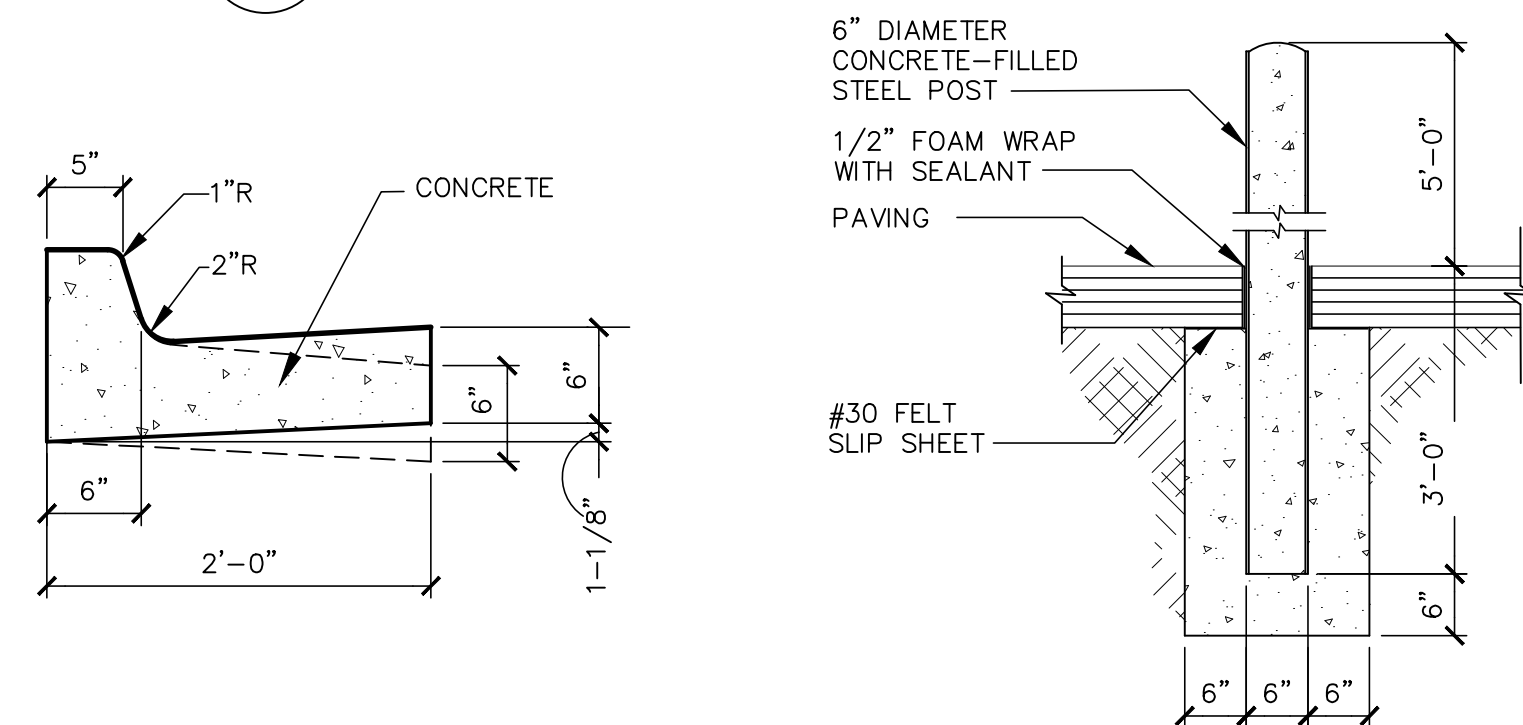
NOTE: ALL TEXT SHALL BE PAINTED  
YELLOW (PMS 123)

11 PAINTED



5 CURB RAMP SECTION

SD1  $1'' = 1' - 0''$

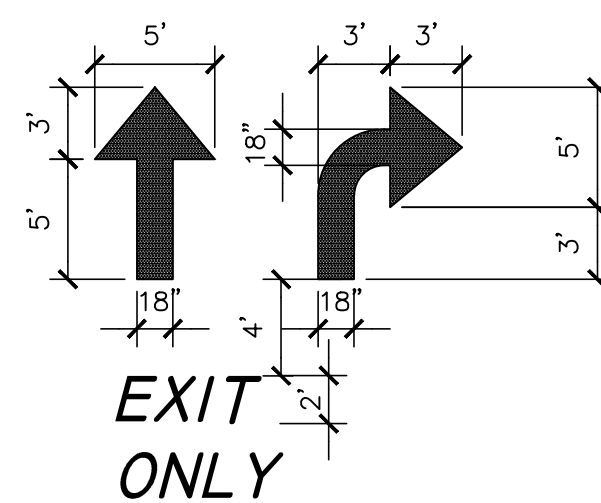


8 TYP. CONCRETE CURB & GUTTER

SD1  $1'' = 1' - 0''$

9 TYP BOLLARD DETAIL

SD1 N.T.S.



NOTE : ARROWS AND WORDS CAN BE ARRANGED  
IN OTHER COMBINATIONS THAN THOSE  
ILLUSTRATED HERE TO ACHIEVE DESIRED  
RESULT.

12 TYP. PAVEMENT MARKING

SD1

NOT TO SCALE



13 HANDICAP SYMBOL

SD1

[illegible]

DATE: .....

PREPARED BY:

**URS** Corporation  
architects - engineers - planners  
1255 Broad Street, Suite 201  
Clifton, NJ 07013-3988  
973.383.8590 fax 973.883.8501  
<http://www.urscorp.com>

© 2016 McDonald's USA, LLC  
 PREPARED FOR:  
**McDonald's USA, LLC**  
 These drawings and specifications are the confidential and proprietary information of McDonald's USA, LLC and are not to be used, copied, reproduced, or otherwise disclosed without written authorization. The contract documents were prepared for use on this specific site in conjunction with its issue date and are not suitable for use on a different site or at a later time. Use of these drawings and specifications for any other project without the express services of properly licensed architects and engineers is prohibited. Reproduction of the contract documents for reuse on another project is unauthorized.

|                |                           |                         |                         |
|----------------|---------------------------|-------------------------|-------------------------|
| DRAWN BY<br>MR | STD ISSUE DATE<br>2015_10 | REVIEWED BY<br>URSMTeam | DATE ISSUED<br>01/12/17 |
|----------------|---------------------------|-------------------------|-------------------------|

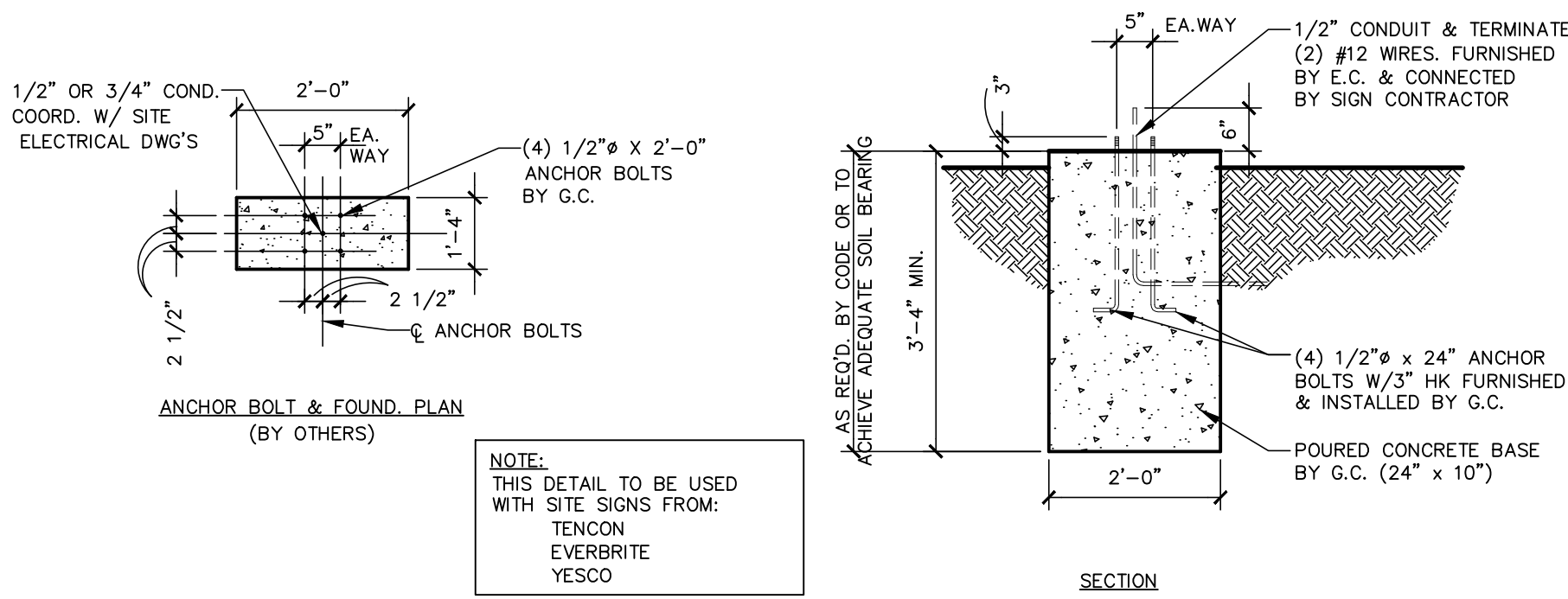
| TITLE                    | DESCRIPTION | SITE ID | SITE ADDRESS |
|--------------------------|-------------|---------|--------------|
| MRP CORE 16 EXTERIOR 2.0 |             |         |              |
|                          |             |         |              |
|                          |             |         |              |

005-0252.00.0

**SD.1**  
CIVIL SITE DETAILS

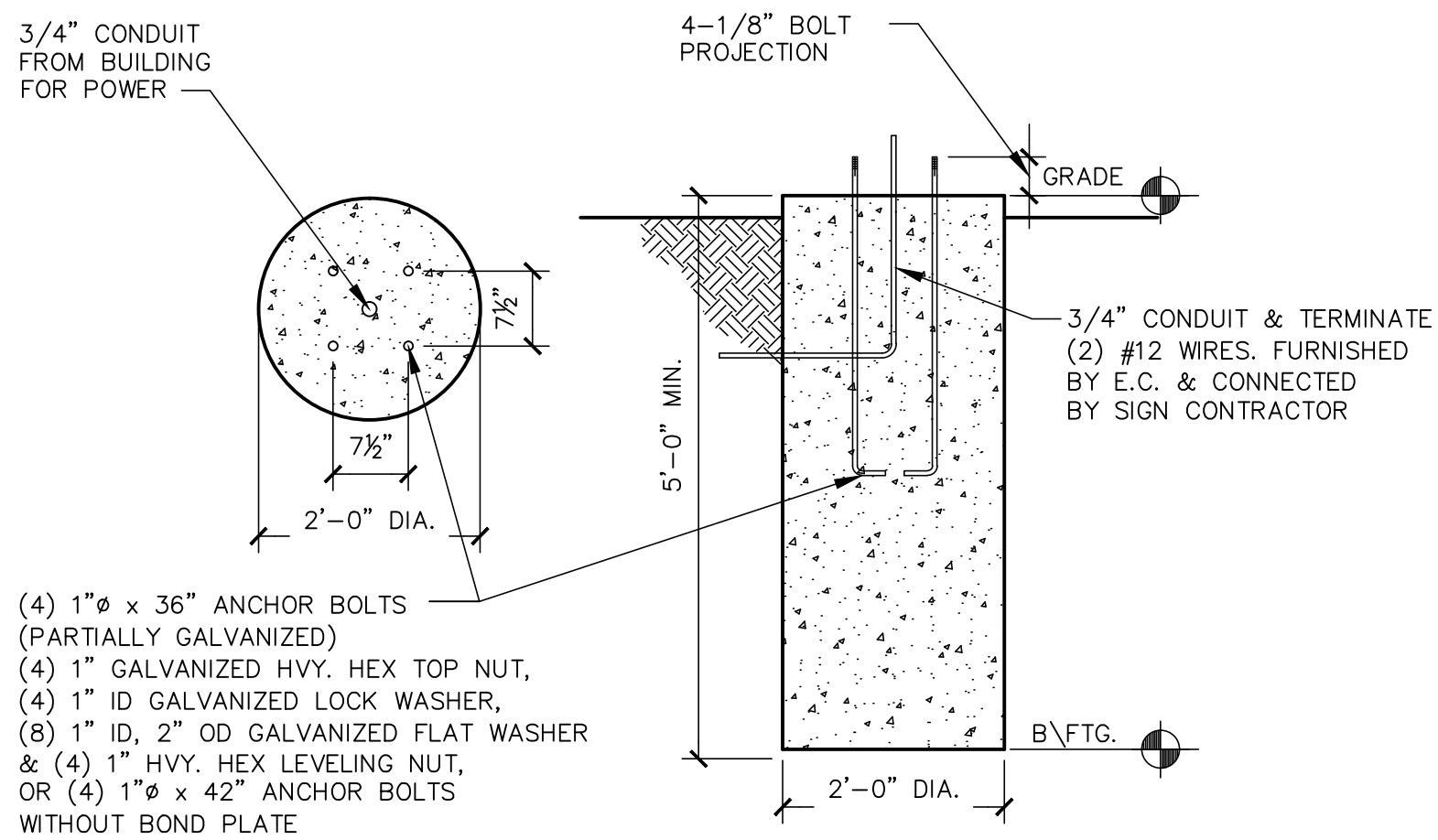
1 NOT USED  
SD2

3 DIRECTIONAL SIGN FTG.  
SD2 1/4"=1'-0"



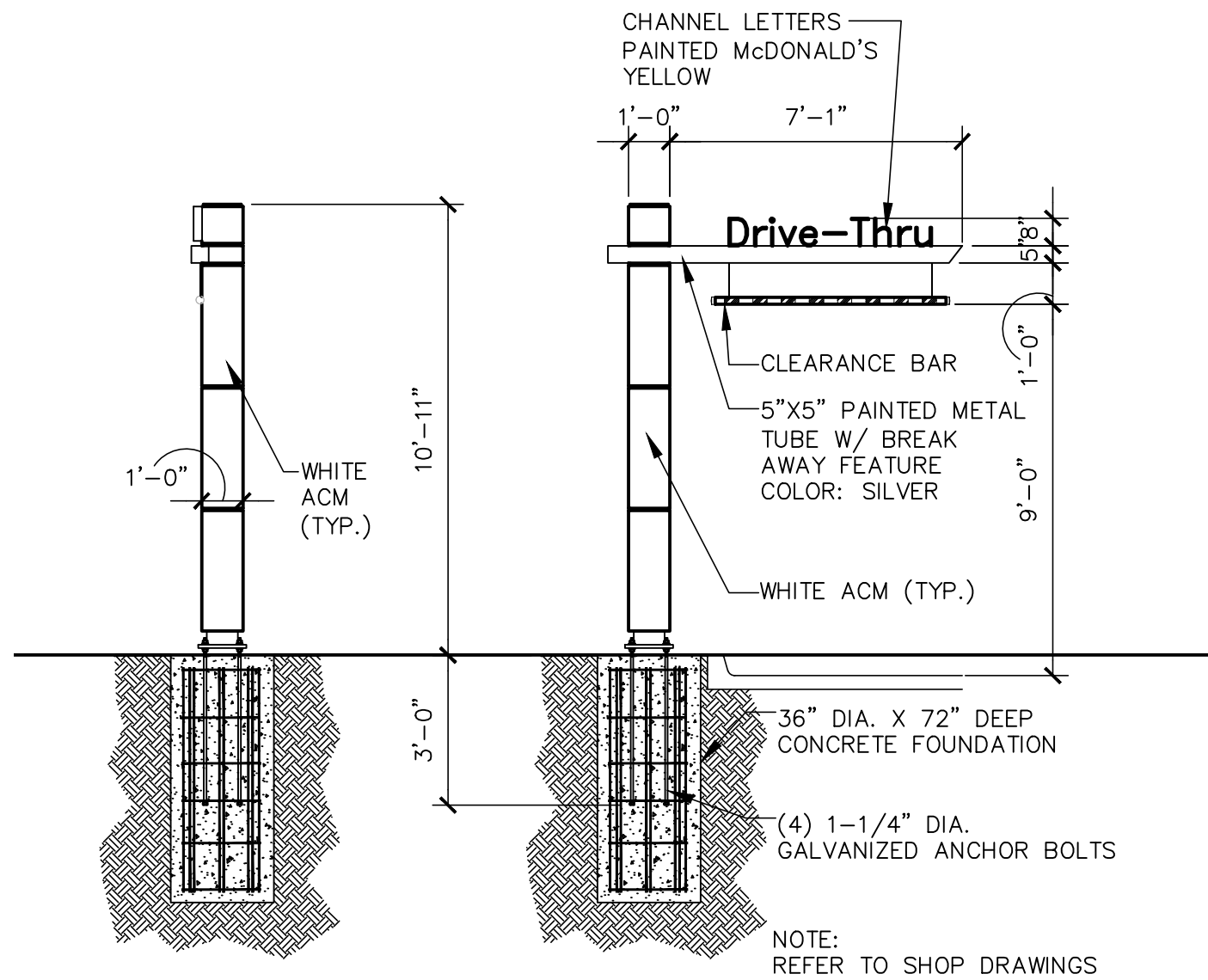
- NOTES:
- G.C. TO COORDINATE THE RESPONSIBILITIES OF THE ELECTRICAL CONTRACTOR AND THE SIGN SUPPLIER.
  - GENERAL CONTRACTOR TO INSTALL PRE-FORMED, PRE-WIRED VEHICLE DETECTOR LOOP.
  - #12 GREEN GROUNDING CONDUCTOR MUST BE RUN WITH CIRCUIT CONDUCTORS FROM GROUND BUS IN PANEL LP TO ALL MENU BOARDS AND REFERENCE BOARDS.
  - ALL UNDERGROUND CONDUIT FOR AUDIO TO BE P.V.C. NO METAL ALLOWED.
  - DIRECTIONAL SIGN FOOTING DETAIL TO BE USED FOR ALL ENTER/EXIT/WELCOME SIGNS AND DRIVE THRU DIRECTIONAL SIGNAGE. COORDINATE WITH THE SITE PLANS AND McDONALD'S PROJECT MANAGER FOR THE EXACT LOCATION, ORIENTATION AND NUMBER OF SIGNS TO BE INSTALLED AT THIS SITE. ALL WORK TO BE COORDINATED WITH THE OTHER TRADES.
  - ALL GALVANIZED ANCHOR BOLTS TO BE SUPPLIED BY THE CONTRACTOR.
  - MAINTAIN 2 1/2" MIN. CONCRETE COVER OF ALL CONDUIT, REBAR, ETC.
  - SLOPED 1:48 TOP FROM CENTER TO EDGES & USE NON-SHRINK GROUT UNDER BASE P.

2 GENERAL NOTES  
SD2

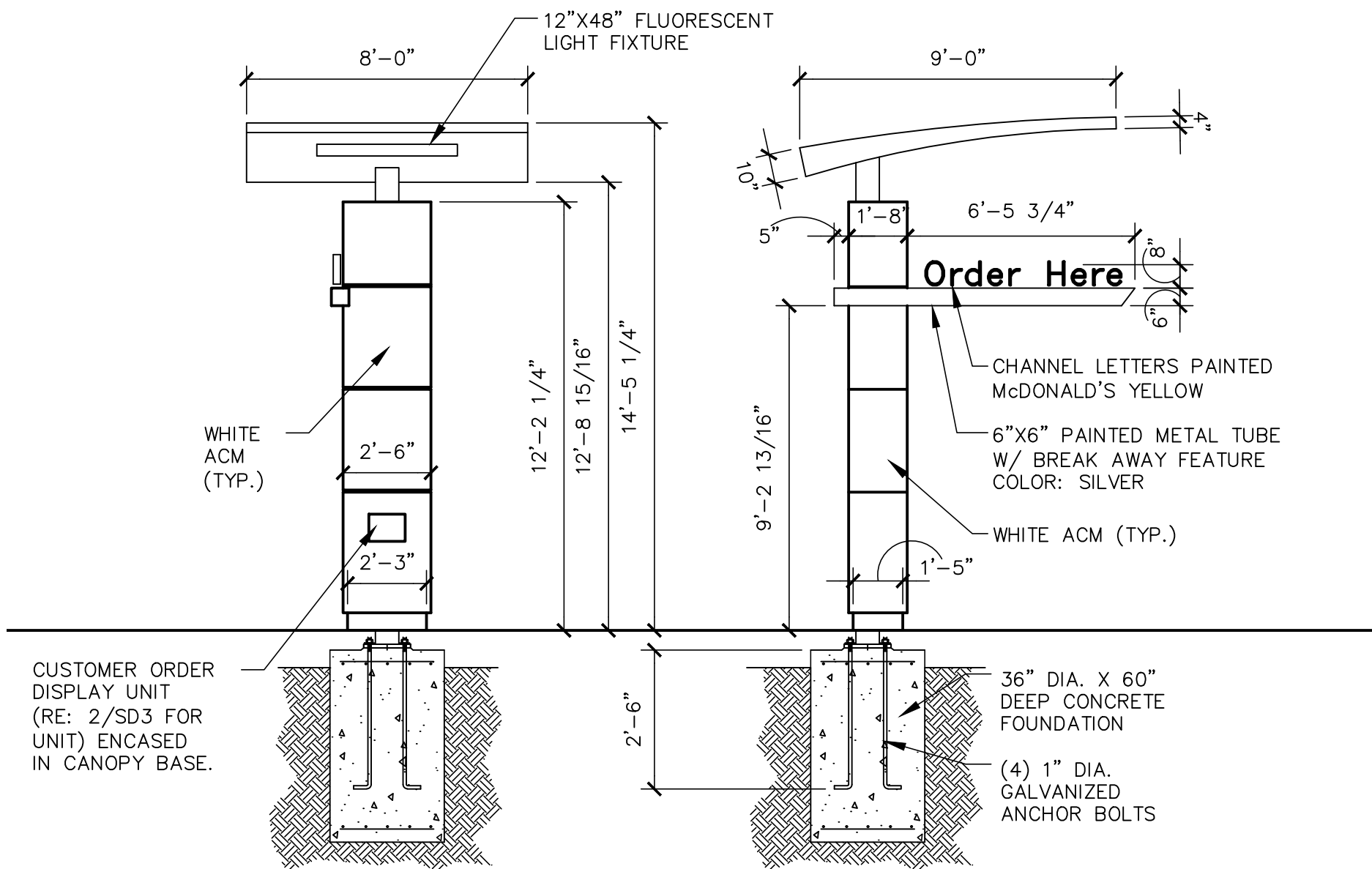


4 GATEWAY SIGN FTG.  
SD2 1/4"=1'-0"

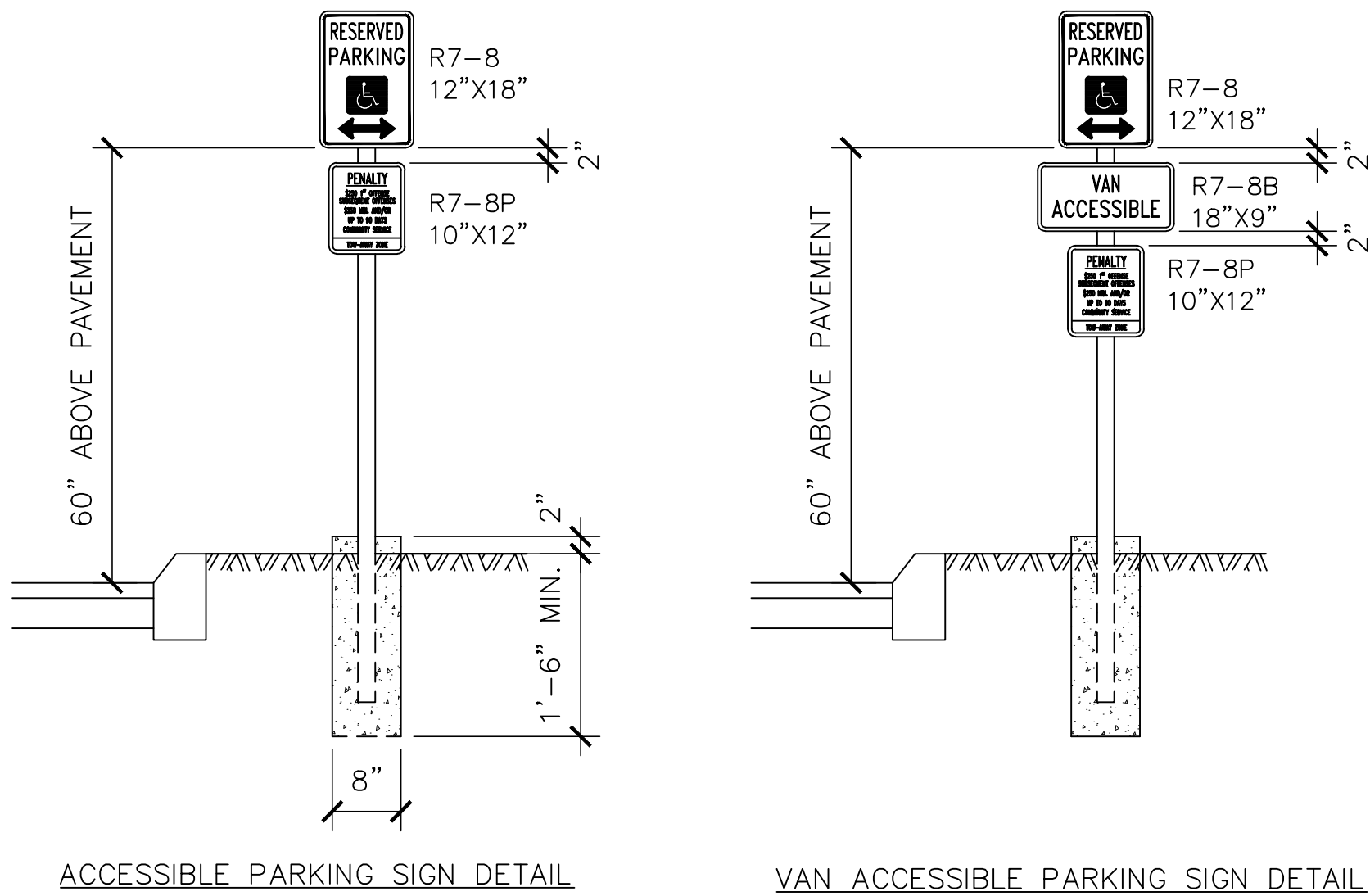
5 NOT USED  
SD2



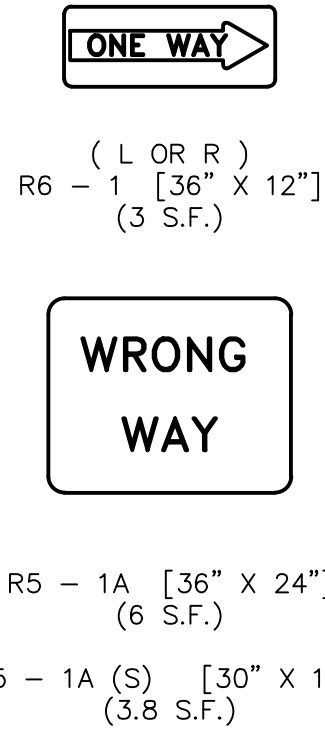
6 GATEWAY SIGN  
SD2 1/4"=1'-0"



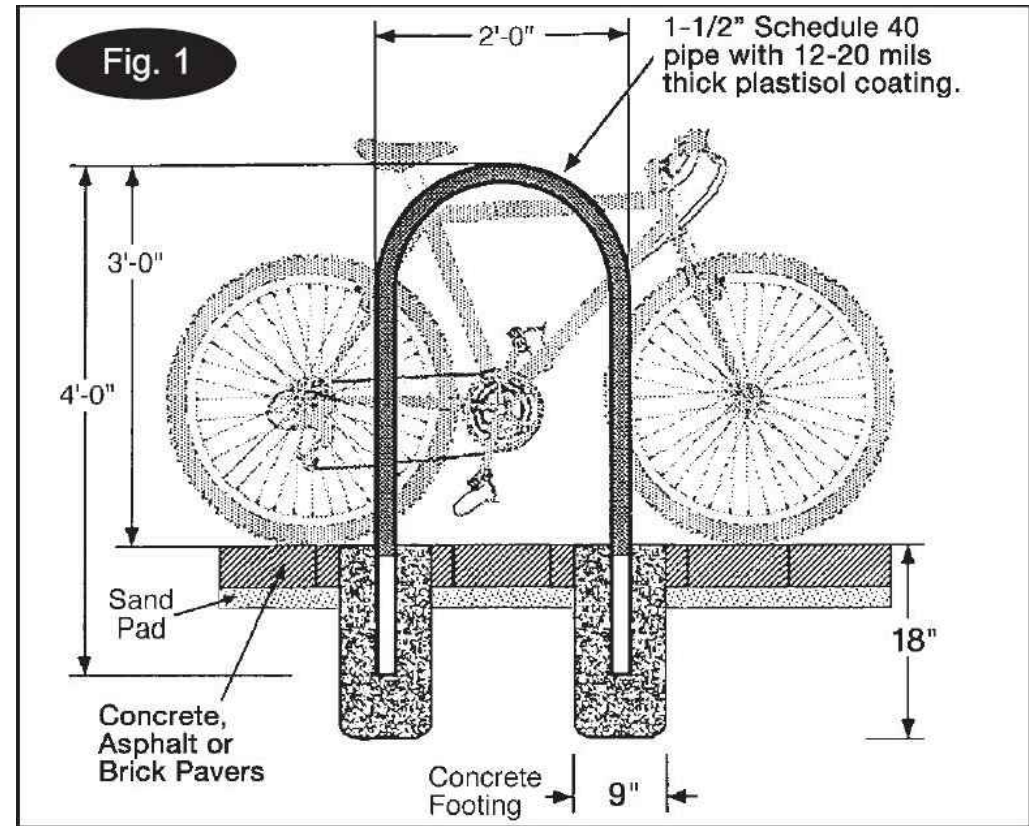
7 ORDER HERE CANOPY  
SD2 1/4"=1'-0"



8 ACCESSIBLE SIGN DESIGNATIONS  
SD2 1/2"=1'-0"



9 ONE WAY SIGNAGE  
SD2 NOT TO SCALE



10 BIKE RACK  
SD2 NOT TO SCALE

| SHEET NO.     |  | TITLE                    |  | DRAWN BY |  | STD ISSUE DATE |  | REVIEWED BY |  | DATE ISSUED |  | SITE ADDRESS         |  | LITTLETON, CO |  | DESCRIPTION |  | REV         |  | DATE |  | BY |  |
|---------------|--|--------------------------|--|----------|--|----------------|--|-------------|--|-------------|--|----------------------|--|---------------|--|-------------|--|-------------|--|------|--|----|--|
| SD.2          |  | MRP CORE 16 EXTERIOR 2.0 |  | HM       |  | 2015-10        |  | URS Team    |  | 01/12/17    |  | 10177 W PROGRESS AVE |  | LITTLETON, CO |  | 005-0252    |  | DESCRIPTION |  |      |  |    |  |
| 005-0252.00.0 |  | CIVIL SITE DETAILS       |  |          |  |                |  |             |  |             |  |                      |  |               |  |             |  |             |  |      |  |    |  |

PREPARED BY:  
**URS Corporation**  
architects - engineers - planners  
1255 Broad Street, Suite 201  
Clifton, NJ 07013-3988  
973.883.8590 fax 973.883.8501  
http://www.urscorp.com

© 2016 McDonald's USA, LLC  
**McDonald's USA, LLC**  
These drawings and specifications are the confidential and proprietary property of McDonald's USA, LLC and shall not be copied or reproduced without written authorization. The contract documents were prepared for use on a different site or at a later time. Use of these drawings for reference or example on another project requires the approval of McDonald's USA, LLC. The contract documents for the project are not authorized for reuse on another project is not authorized.