

COLORADO LAND SURVEY MONUMENT RECORD

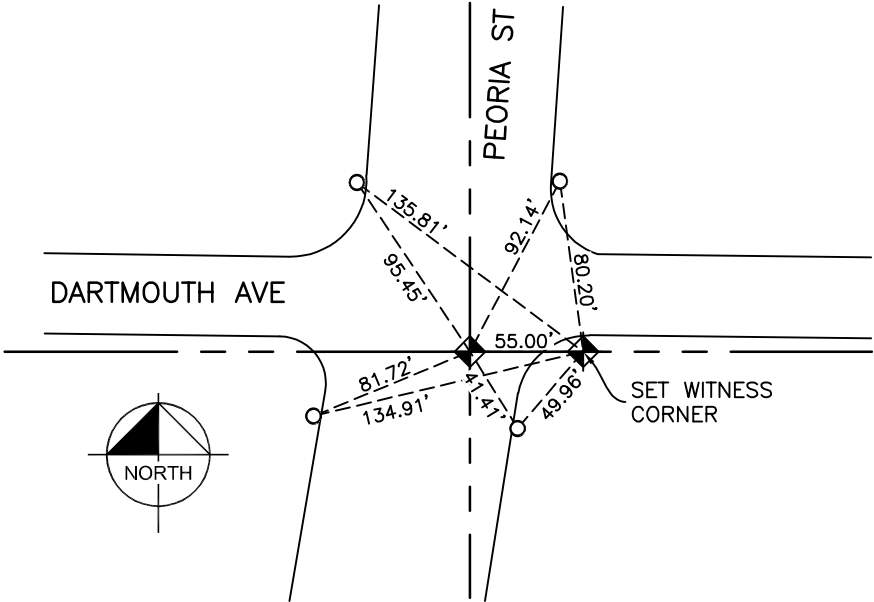
Department of Regulatory Agencies  
Board of Licensure for Architects, Professional Engineers and Professional Land Surveyors  
1560 Broadway, Suite 1350  
Denver, CO 80202  
Phone (303) 894-7800; Fax (303) 894-2310; EMAIL aes@dora.state.co.us; V/TDD 711

Report one monument only on this form – Reproduction of this form is authorized.  
All items are to be filled in by the Land Surveyor using **PERMANENT BLACK LETTERING** and lines which can be reproduced.

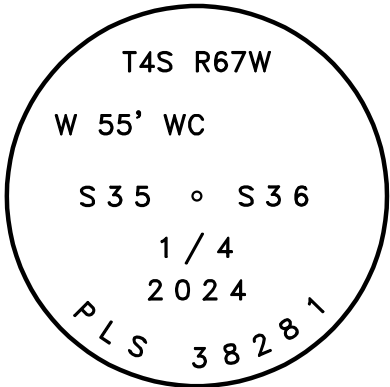
1. TYPE OF MONUMENT: ☐ SECTION CORNER ☒ QUARTER CORNER ☐ SIXTEENTH CORNER ☐ OTHER\_\_\_\_\_
2. DESCRIPTION AND DATE OF MONUMENT FOUND:  
SECTION CORNER NOT FOUND; OBLITERATED BY RECENT CONSTRUCTION. RECOVERED ACCESSORIES FROM MONUMENT RECORD ACCEPTED AUGUST 31, 2008
3. DESCRIPTION OF MONUMENT SET BY YOU TO PERPETUATE THE LOCATION OF THIS POINT:  
SET WITNESS CORNER 55.00 FEET EAST ALONG THE EAST-WEST CENTER OF SECTION LINE OF SECTION 36. SET 3-1/4" ALUMINUM ROCK CAP IN CONCRETE. POSITION RE-ESTABLISHED BASED ON RECOVERED MONUMENT PRIOR TO CONSTRUCTION AND RECOVERED ACCESSORIES.
4. SKETCH SHOWING RELATIVE LOCATION OF MONUMENT, ACCESSORIES AND REFERENCE POINTS STATING WHETHER FOUND OR SET, SHOW SUPPORTING AND/OR CONTRADICTORY EVIDENCE WHERE APPLICABLE:

LEGEND

- RECOVERED NAIL WITH 3/4" TAG IN CONCRETE "CITY OF AURORA"



Not to scale



Stamping on Cap

- a. Date of field Work to Establish, Restore or Rehabilitate Monument: 9/16/2024
- b. Date Monument was used as a Control corner: 9/16/2024

(Surveyor, do not fill in)

RECEIVED AT OFFICE OF THE COUNTY CLERK  
\_\_\_\_\_ COUNTY

BY: \_\_\_\_\_

DATE: \_\_\_\_\_

Record to be filed numerically by Index Reference Number, then alphabetically by letter in the index reference number, then under appropriate Township, Range, and Meridian.

5. CERTIFICATION

This is to certify that I was in responsible charge of the surveying work described in this record and that to the best of my knowledge the information presented herein is true and correct.

Name (Please Print): DARREN R. WOLTERSTORFF

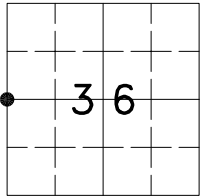
Firm Name: KIMLEY-HORN

Firm Address: 6200 S. SYRACUSE WAY, #300

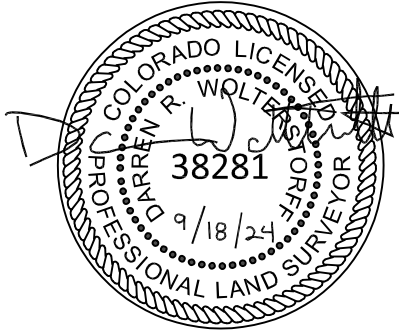
GREENWOOD VILLAGE, CO 80111

Phone: (303) 228-2300

6. LOCATION DIAGRAM  
1" = 1 Mile



● = Location of Monument



Signature/Date through Seal

7. SEC 36 T 4S R 67W , 6TH P.M.  
COUNTY ARAPAHOE INDEX REF NUMBER 21-C

\*\*8. SEC \_\_\_\_\_ T \_\_\_\_\_ R \_\_\_\_\_ , \_\_\_\_\_ P.M.  
COUNTY \_\_\_\_\_ INDEX REF NUMBER \_\_\_\_\_

\*\* To be used only for monuments located on county lines



**Dora**  
Department of Regulatory Agencies