





# HARVEST CROSSING SUBDIVISION FILING NO. 2

SITUATED IN THE NORTHWEST QUARTER OF SECTION 29,  
TOWNSHIP 4 SOUTH, RANGE 65 WEST OF THE SIXTH PRINCIPAL MERIDIAN,  
CITY OF AURORA, COUNTY OF ARAPAHOE, STATE OF COLORADO.

POINT OF  
COMMENCEMENT  
NW COR., SEC. 29  
T4S, R65W, 6TH P.M.  
FOUND 1" METAL PIPE WITH  
2-1/2" ALUMINUM CAP IN  
RANGE BOX  
STAMPED AS SHOWN

T4S R65W  
S19 | S20  
S30 | S29  
1984  
P.L.S. 13155

CITY OF AURORA  
T4S  
1/4 - 20 - 29  
R65W  
1994 LS 15244



## LEGEND

- FOUND ALIQUOT CORNER AS SHOWN HEREON
- SET NO. 5 X 18" REBAR WITH 1-1/4" YELLOW PLASTIC CAP STAMPED "AZTEC PLS 37933"
- FOUND NO. 5 REBAR WITH 1-1/4" YELLOW PLASTIC CAP STAMPED "AZTEC PLS 37933"
- FOUND NO. 5 REBAR WITH NO CAP
- (ROW) RIGHT-OF-WAY
- BLOCK NUMBER

## LINE TABLE

LINE	BEARING	LENGTH
L1	N89°58'17"W	32.00'
L2	S00°01'47"W	73.43'
L3	N89°58'08"W	153.02'
L4	N89°57'19"W	175.00'
L5	N00°02'41"E	190.81'
L6	N00°02'41"E	220.66'
L7	N45°02'41"E	39.64'

## CURVE TABLE

CURVE	DELTA	RADIUS	LENGTH
C1	89°59'43"	15.00'	23.56'
C2	89°45'53"	20.00'	31.33'
C3	2°48'30"	115.00'	5.64'

FOR REVIEW

0' 50' 100' 200'  
SCALE: 1" = 100'

FOR AND ON BEHALF OF  
AZTEC CONSULTANTS, INC.

**AzTEC**  
CONSULTANTS, INC.  
300 East Mineral Ave., Suite 1  
Littleton, Colorado 80122  
Phone: (303) 713-1898  
Fax: (303) 713-1897  
www.aztecconsultants.com

AzTec Proj. No: 192723-01 Drawn By: BAM

DEVELOPER  
INTEGRITY LAND VENTURES, LLC

7200 S. ALTON WAY  
CENTENNIAL, CO 80112

DATE OF PREPARATION: 2023-11-30

SCALE: 1" = 100'

SHEET 2 OF 10

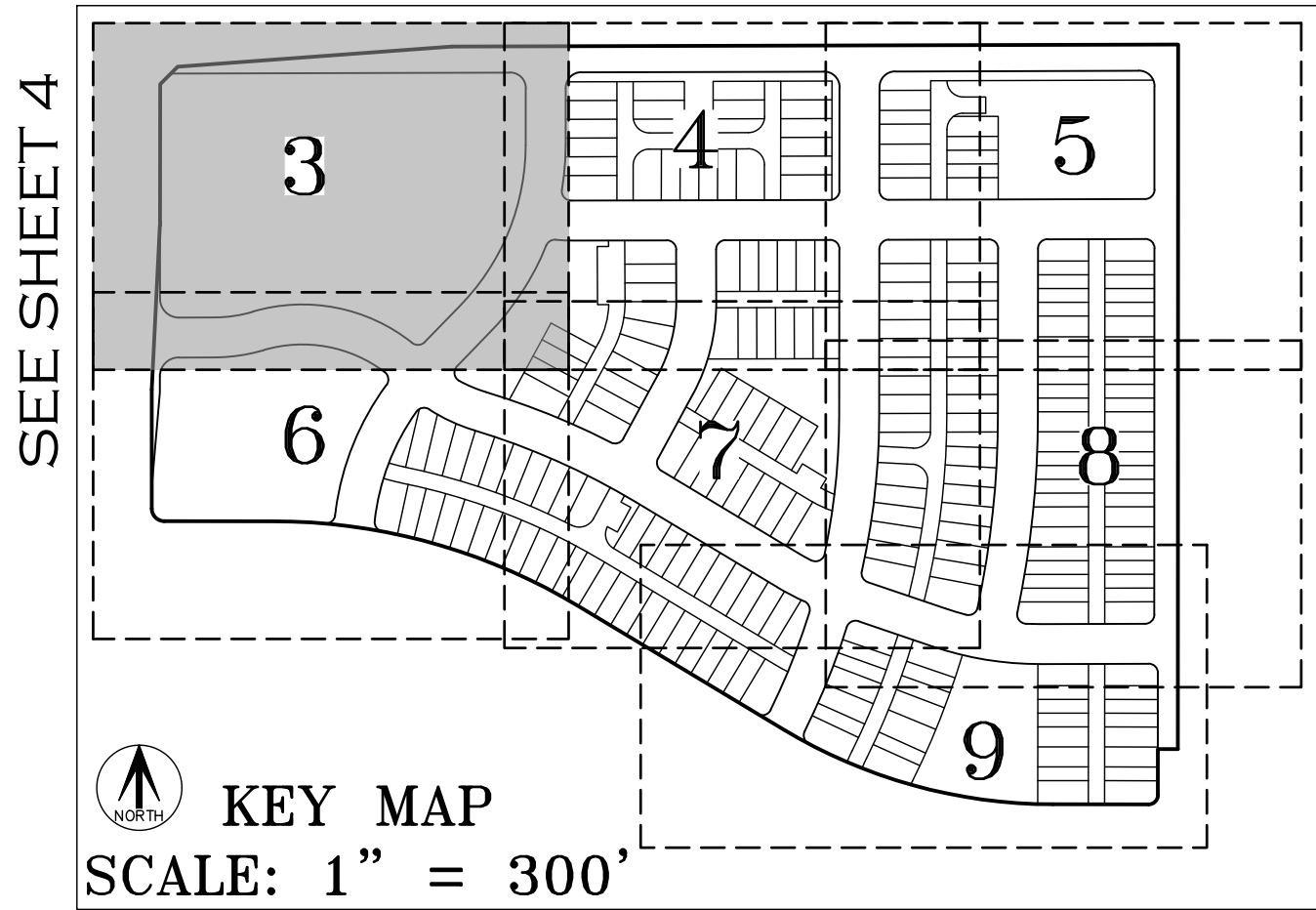
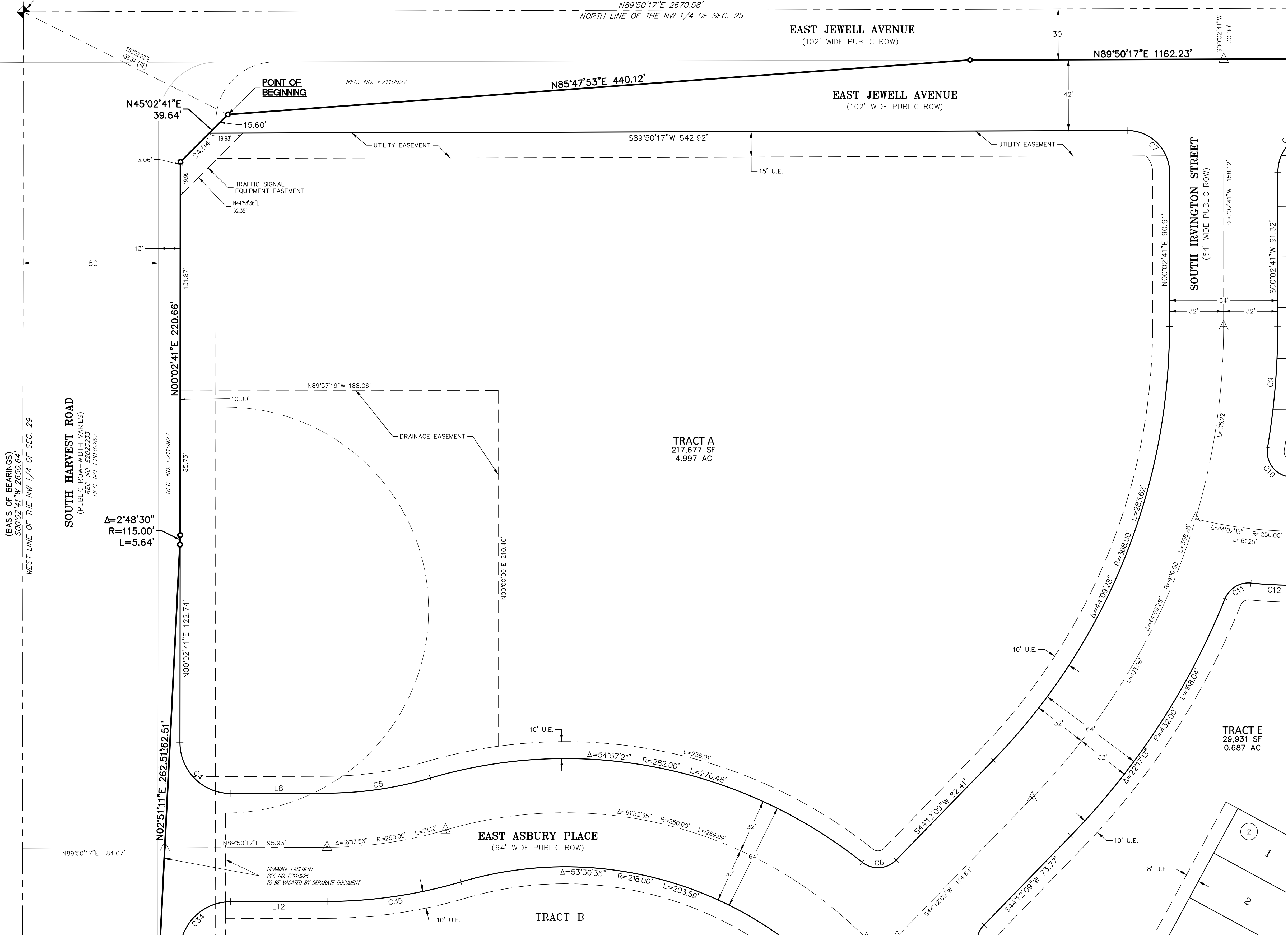


# HARVEST CROSSING SUBDIVISION FILING NO. 2

SITUATED IN THE NORTHWEST QUARTER OF SECTION 29,  
TOWNSHIP 4 SOUTH, RANGE 65 WEST OF THE SIXTH PRINCIPAL MERIDIAN,  
CITY OF AURORA, COUNTY OF ARAPAHOE, STATE OF COLORADO.

T4S R65W  
S19 | S20  
S30 | S29  
1984  
PLS 13155

POINT OF COMMENCEMENT  
NW COR., SEC. 29  
T4S, R65W, 6TH P.M.  
FOUND 1" METAL PIPE WITH 2-1/2  
STAMPED AS SHOWN



**LEGEND**

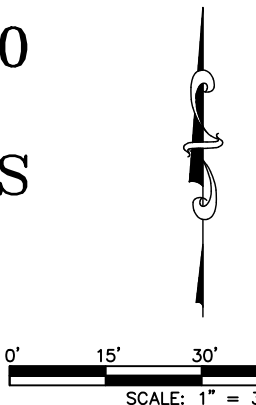
- FOUND ALIQUOT CORNER AS SHOWN HEREON
- SET NO. 5 X 18" REBAR WITH 1-1/4" YELLOW PLASTIC CAP STAMPED "AZTEC PLS 37933"
- U.E. UTILITY EASEMENT
- (ROW) RIGHT-OF-WAY
- ## BLOCK NUMBER
- MONUMENT BOXES WITH A REASONABLY PERMANENT MONUMENT BEARING THE LICENSE NUMBER OF THE RESPONSIBLE SURVEYOR, TO BE SET AFTER CONSTRUCTION IS COMPLETE PER SEC. 147-47 AURORA CITY CODE AND PER SEC. 38-51-105-(9) (a) & (b) COLORADO REVISED STATUTES 2020.

SEE SHEET 6

SEE SHEET 6

SEE SHEET 4

SEE SHEET 10  
FOR LINE &  
CURVE TABLES



FOR REVIEW

FOR AND ON BEHALF OF  
AZTEC CONSULTANTS, INC.

**AzTEC**  
CONSULTANTS, INC.

300 East Mineral Ave., Suite 1  
Littleton, Colorado 80122  
Phone: (303) 713-1898  
Fax: (303) 713-1897  
www.aztecconsultants.com

AzTec Proj. No.: 192723-01 Drawn By: BAM

DEVELOPER  
INTEGRITY LAND VENTURES, LLC

7200 S. ALTON WAY  
CENTENNIAL, CO 80112

DATE OF PREPARATION: 2023-11-30

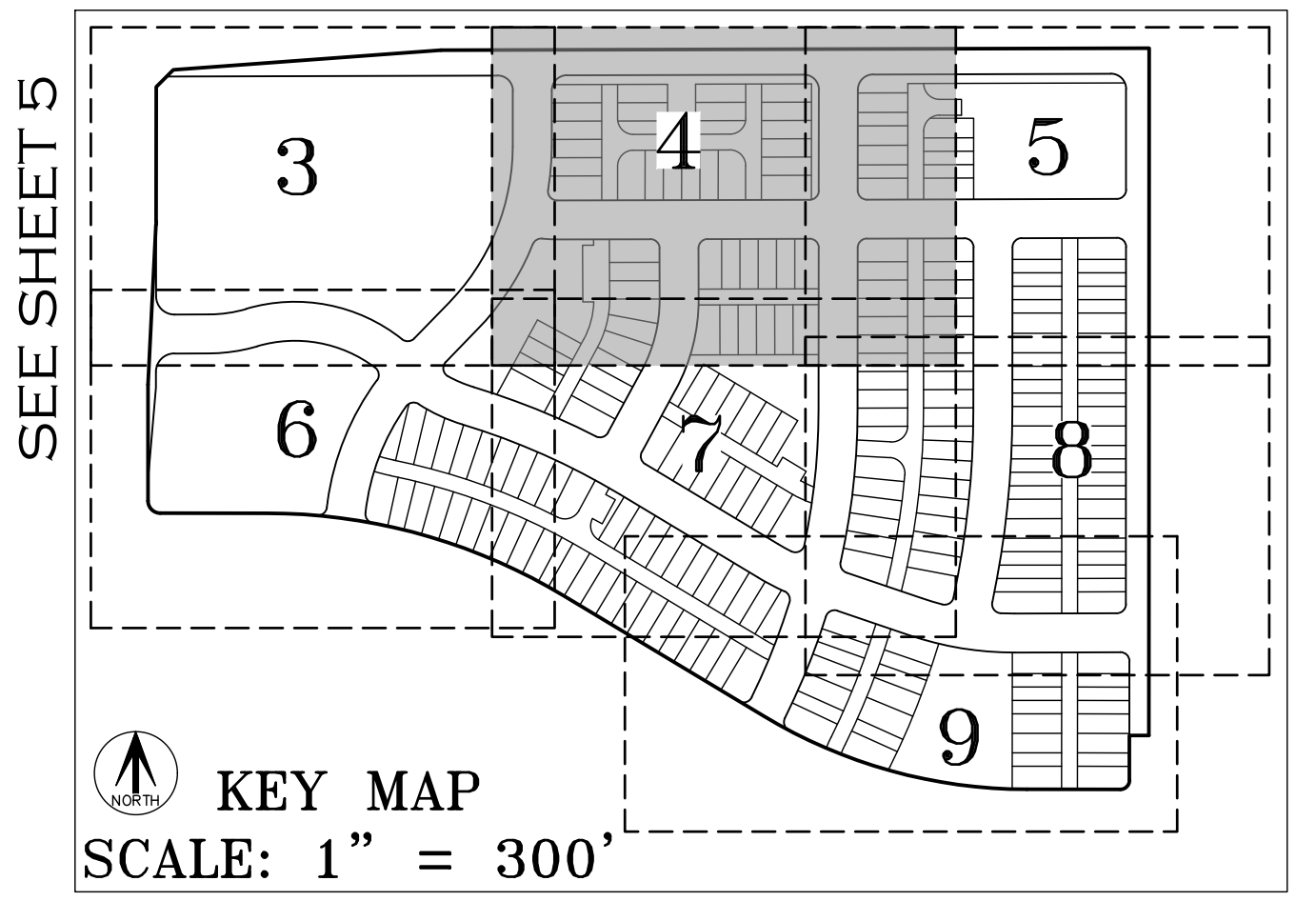
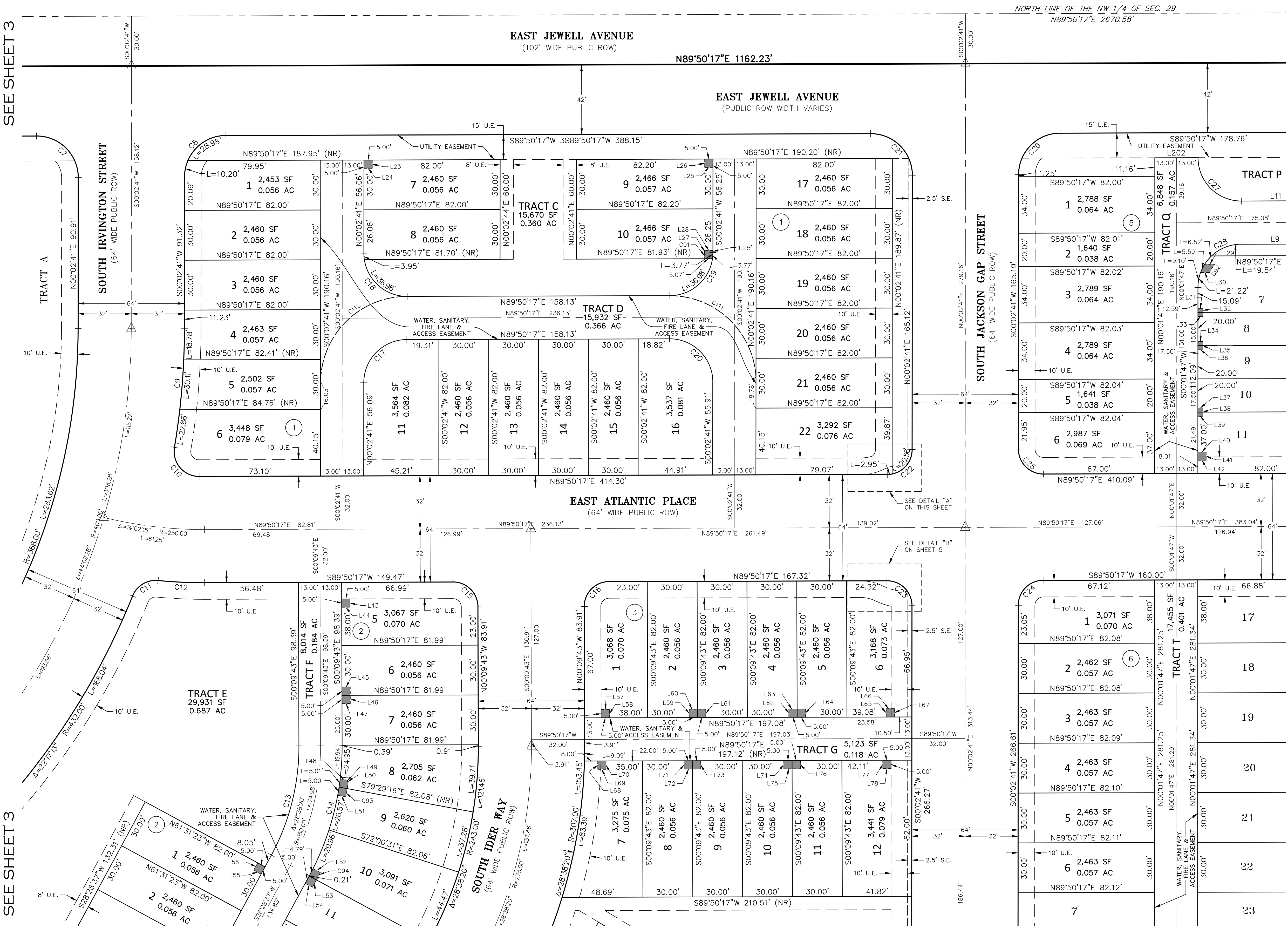
SCALE: 1" = 30'

SHEET 3 OF 10



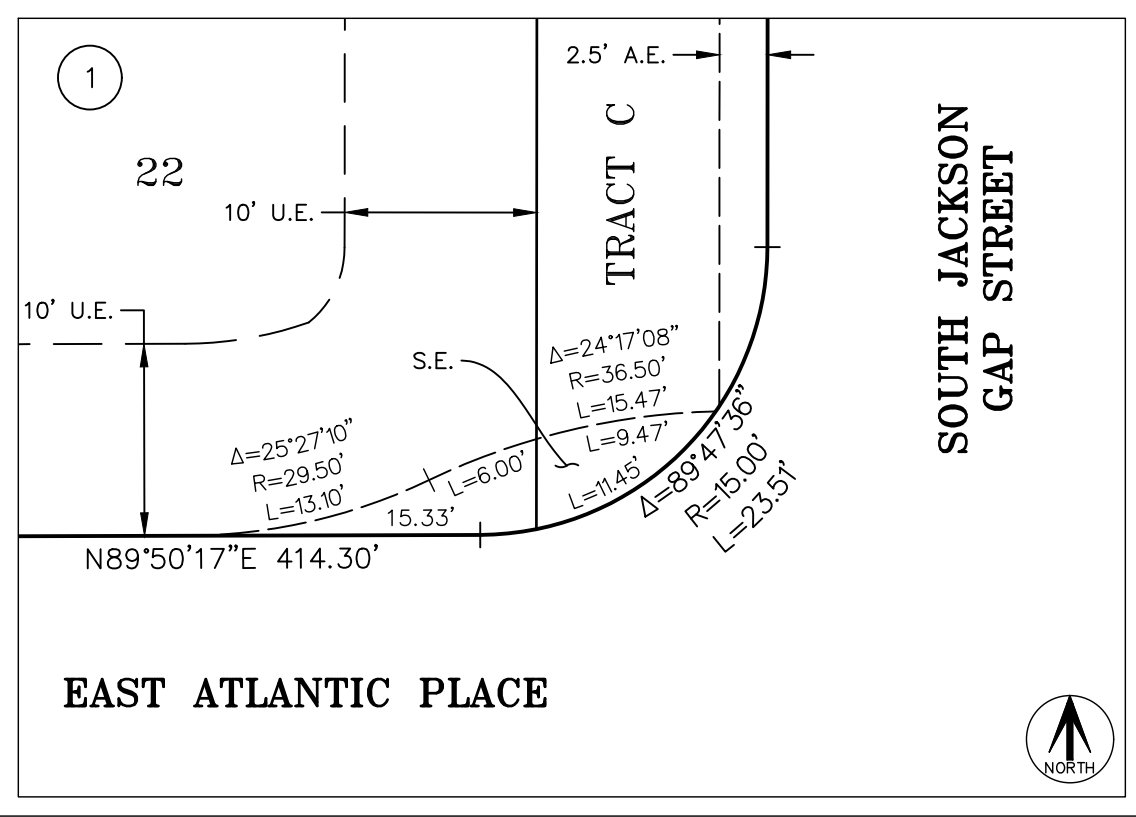
HARVEST CROSSING SUBDIVISION FILING NO. 2

SITUATED IN THE NORTHWEST QUARTER OF SECTION 29,  
TOWNSHIP 4 SOUTH, RANGE 65 WEST OF THE SIXTH PRINCIPAL MERIDIAN,  
CITY OF AURORA, COUNTY OF ARAPAHOE, STATE OF COLORADO.



**LEGEND**

- S.E. SIDEWALK EASEMENT
- U.E. UTILITY EASEMENT
- A.E. ACCESS EASEMENT
- (ROW) RIGHT-OF-WAY
- (NR) DENOTES NON-RADIAL
- ## BLOCK NUMBER
- MONUMENT BOXES WITH A REASONABLY PERMANENT MONUMENT BEARING THE LICENSE NUMBER OF THE RESPONSIBLE SURVEYOR, TO BE SET AFTER CONSTRUCTION IS COMPLETE PER SEC. 147-47 AURORA CITY CODE AND PER SEC. 38-51-105-(9) (a) & (b) COLORADO REVISED STATUTES 2020.
- WATER METER EASEMENT



SEE SHEET 10  
FOR LINE &  
CURVE TABLES

**AzTEC**  
CONSULTANTS, INC.

300 East Mineral Ave., Suite 1  
Littleton, Colorado 80122  
Phone: (303) 713-1898  
Fax: (303) 713-1897  
www.aztecconsultants.com

**DEVELOPER**  
INTEGRITY LAND VENTURES, LLC

7200 S. ALTON WAY  
CENTENNIAL, CO 80112

DATE OF PREPARATION: 2023-11-30

SCALE: 1" = 30'

SHEET 4 OF 10

SEE SHEET 3

SEE SHEET 5

SEE SHEET 3

SEE SHEET 5

SEE SHEET 7

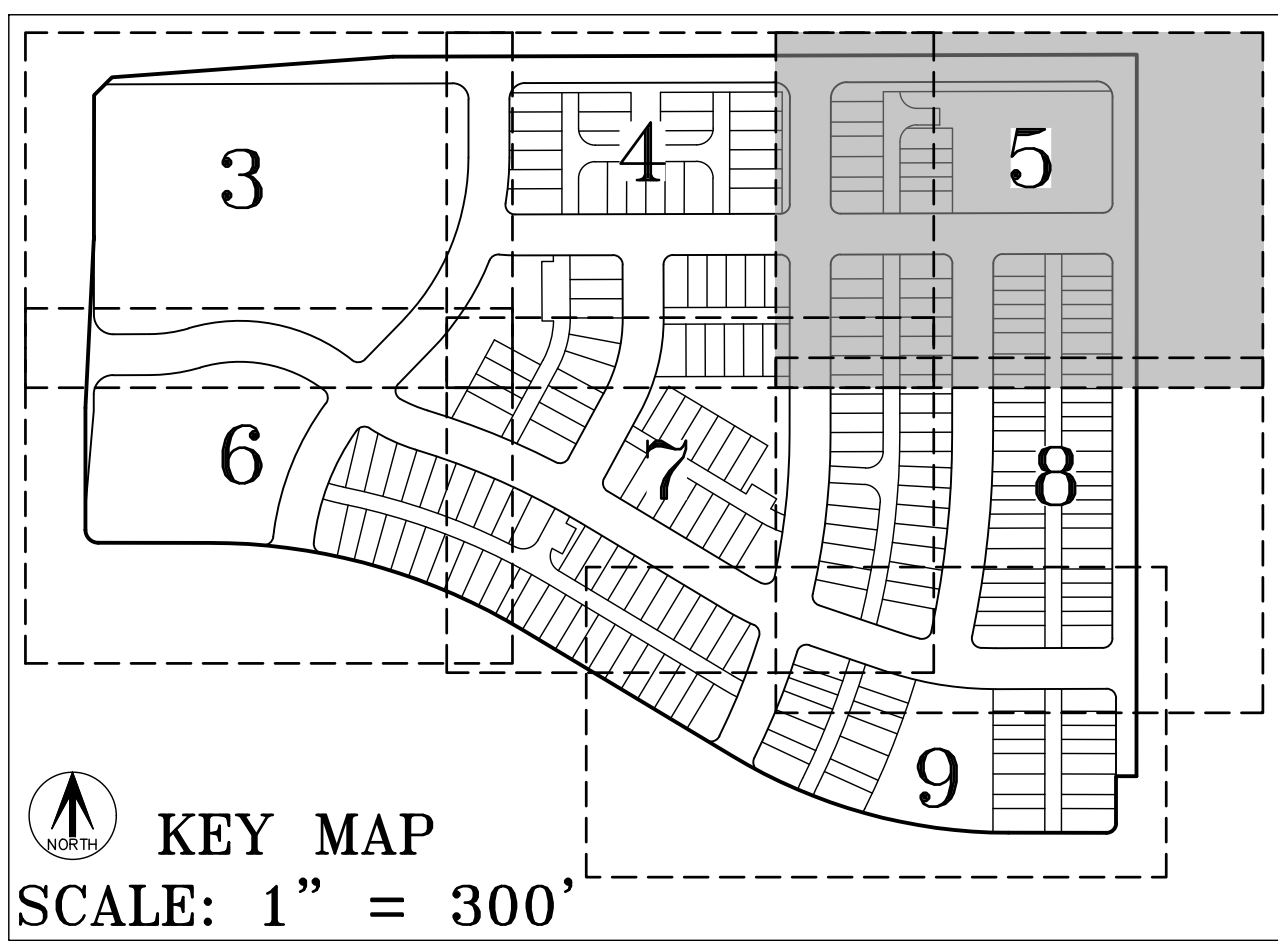
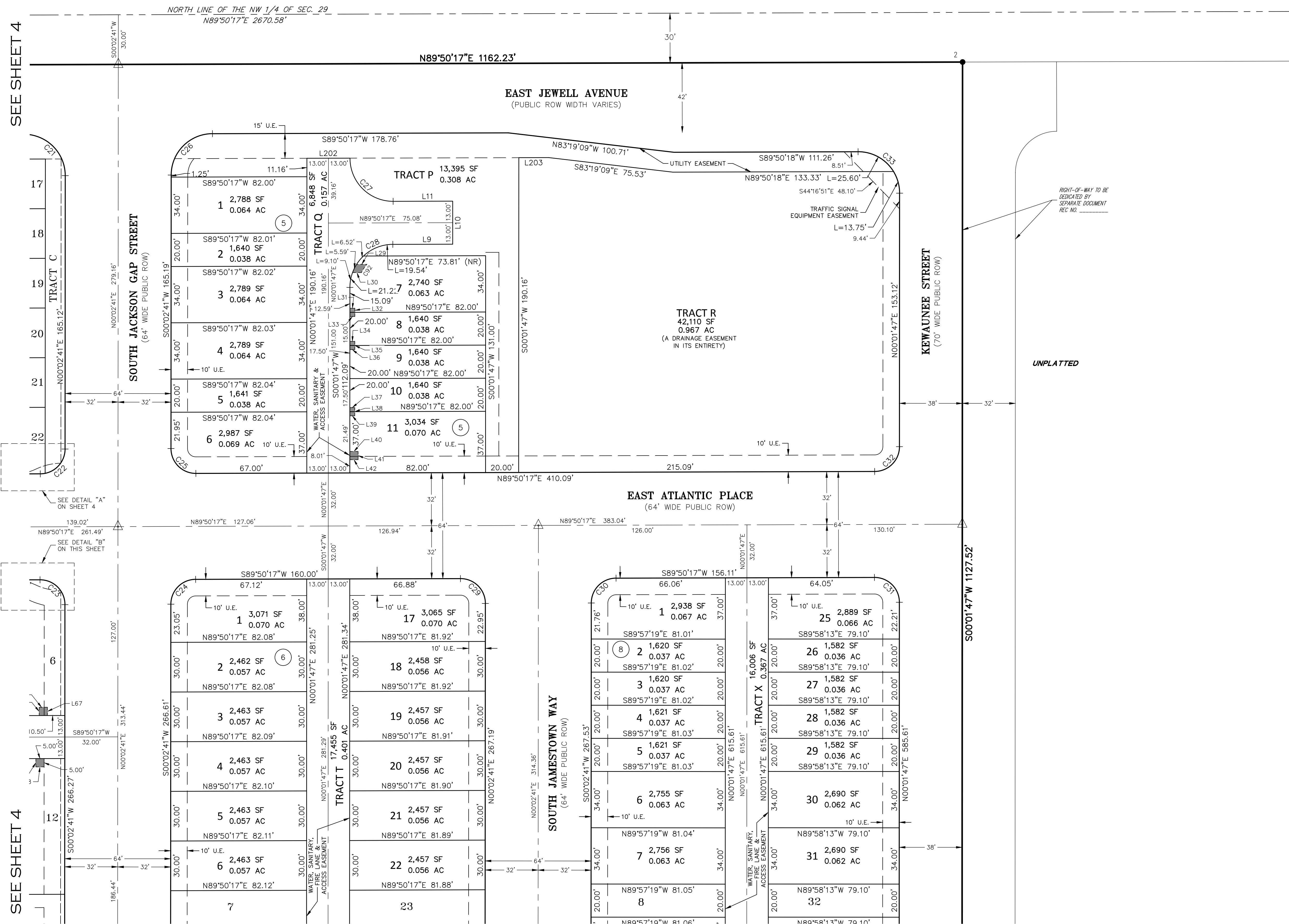
SEE SHEET 7

FOR REVIEW

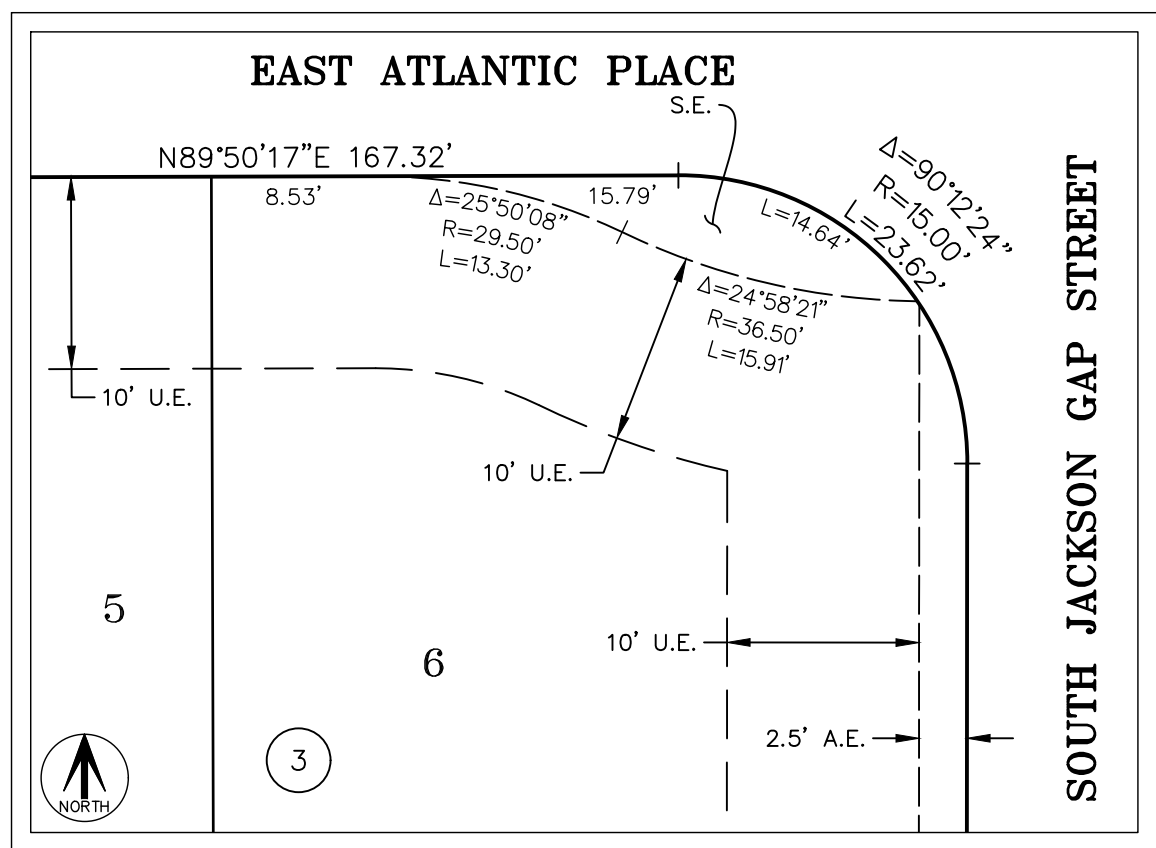


# HARVEST CROSSING SUBDIVISION FILING NO. 2

SITUATED IN THE NORTHWEST QUARTER OF SECTION 29,  
TOWNSHIP 4 SOUTH, RANGE 65 WEST OF THE SIXTH PRINCIPAL MERIDIAN,  
CITY OF AURORA, COUNTY OF ARAPAHOE, STATE OF COLORADO.



LEGEND	
●	FOUND NO. 5 REBAR WITH NO CAP
S.E.	SIDEWALK EASEMENT
U.E.	UTILITY EASEMENT
A.E.	ACCESS EASEMENT
(ROW)	RIGHT-OF-WAY
(NR)	DENOTES NON-RADIAL
##	BLOCK NUMBER
▲	MONUMENT BOXES WITH A REASONABLY PERMANENT MONUMENT BEARING THE LICENSE NUMBER OF THE RESPONSIBLE SURVEYOR, TO BE SET AFTER CONSTRUCTION IS COMPLETE PER SEC. 147-47 AURORA CITY CODE AND PER SEC. 38-51-105-(9) (a) & (b) COLORADO REVISED STATUTES 2020.
■	WATER METER EASEMENT



SEE SHEET 10  
FOR LINE &  
CURVE TABLES



0' 15' 30' 60'  
SCALE: 1" = 30'

FOR REVIEW

SEE SHEET 8

**AzTEC**  
CONSULTANTS, INC.

300 East Mineral Ave., Suite 1  
Littleton, Colorado 80122  
Phone: (303) 713-1898  
Fax: (303) 713-1897  
www.aztecconsultants.com

AzTec Proj. No: 192723-01 Drawn By: BAM

**DEVELOPER**  
INTEGRITY LAND VENTURES, LLC

7200 S. ALTON WAY  
CENTENNIAL, CO 80112

DATE OF PREPARATION: 2023-11-30

SCALE: 1" = 30'

SHEET 5 OF 10

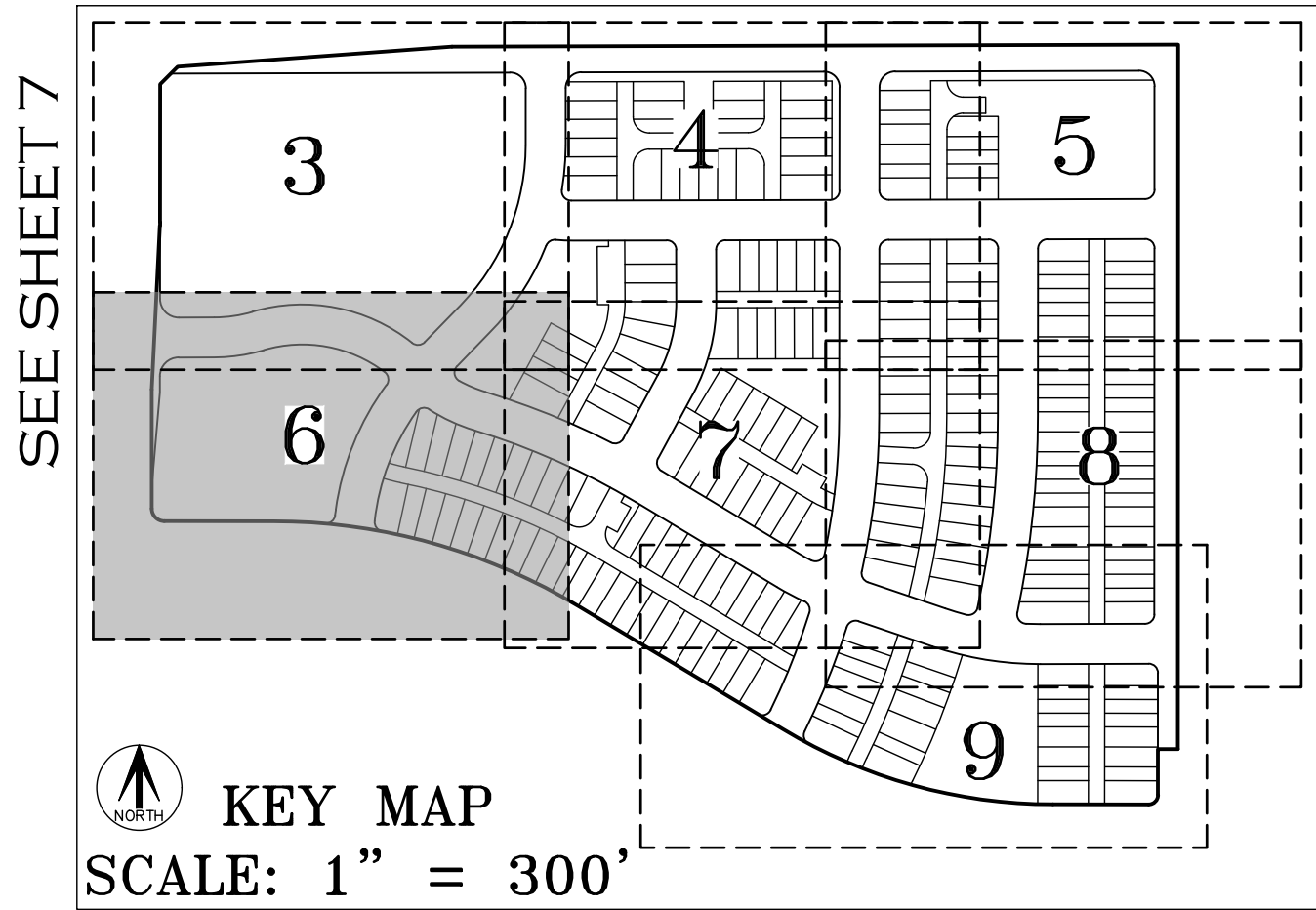
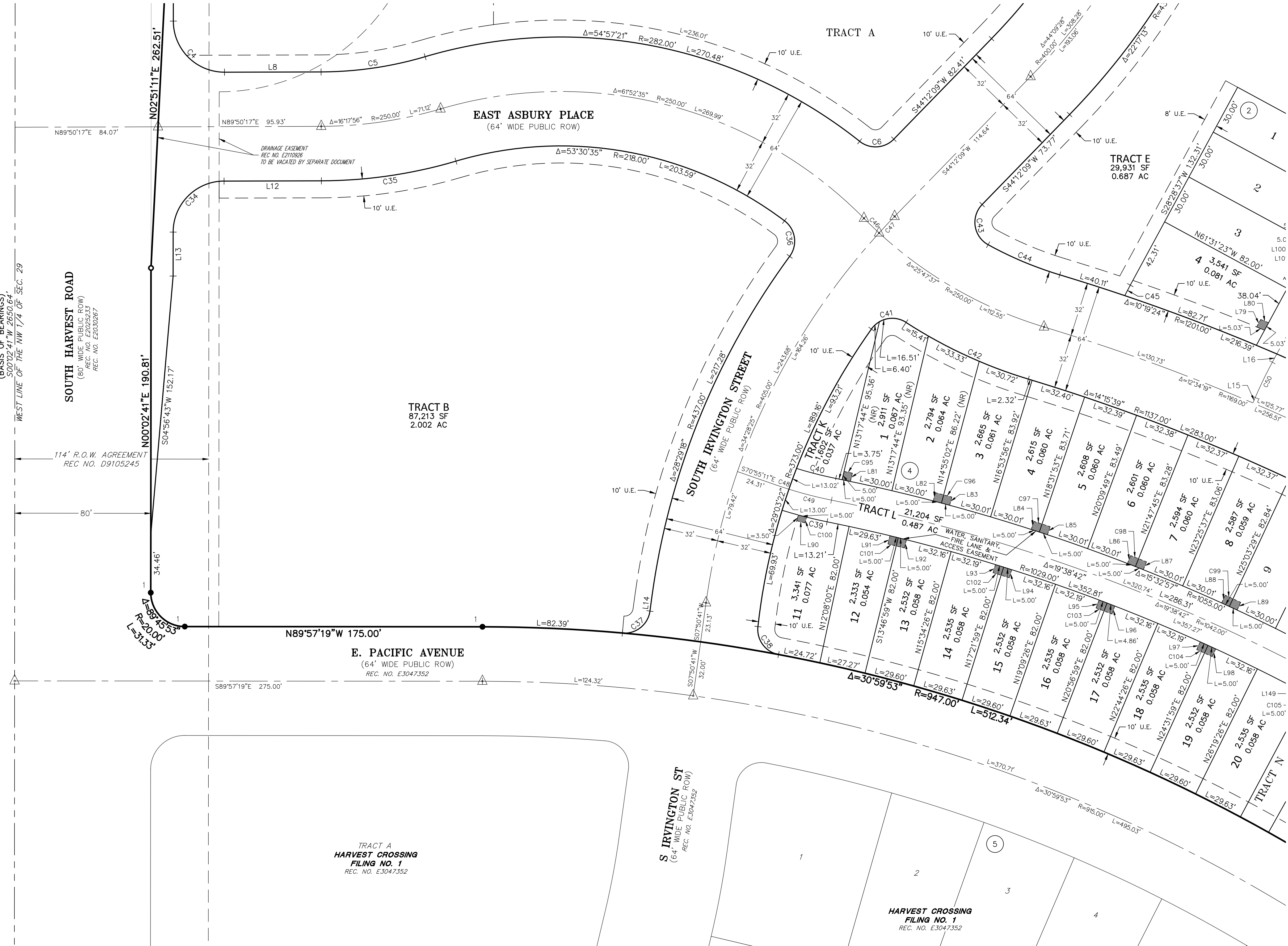


HARVEST CROSSING SUBDIVISION FILING NO. 2

SITUATED IN THE NORTHWEST QUARTER OF SECTION 29,  
TOWNSHIP 4 SOUTH, RANGE 65 WEST OF THE SIXTH PRINCIPAL MERIDIAN,  
CITY OF AURORA, COUNTY OF ARAPAHOE, STATE OF COLORADO.

SEE SHEET 3

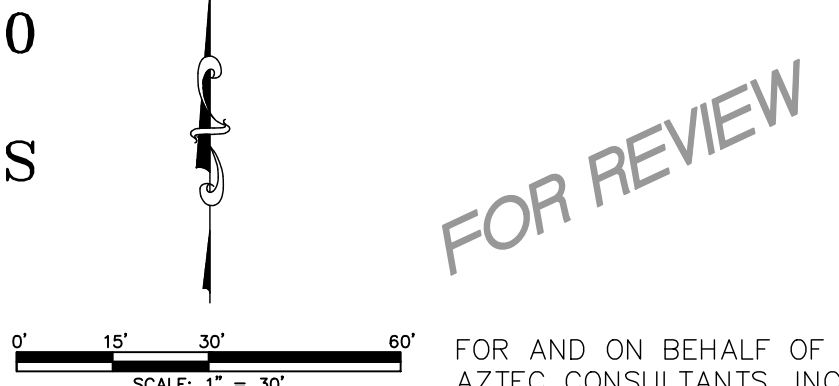
SEE SHEET 3



**LEGEND**

- SET NO. 5 X 18" REBAR WITH 1-1/4" YELLOW PLASTIC CAP STAMPED "AZTEC PLS 37933"
- FOUND NO. 5 REBAR WITH 1-1/4" YELLOW PLASTIC CAP STAMPED "AZTEC PLS 37933"
- U.E. UTILITY EASEMENT
- (ROW) RIGHT-OF-WAY
- ## BLOCK NUMBER
- MONUMENT BOXES WITH A REASONABLY PERMANENT MONUMENT BEARING THE LICENSE NUMBER OF THE RESPONSIBLE SURVEYOR, TO BE SET AFTER CONSTRUCTION IS COMPLETE PER SEC. 147-47 AURORA CITY CODE AND PER SEC. 38-51-105-(9) (a) & (b) COLORADO REVISED STATUTES 2020.
- WATER METER EASEMENT

SEE SHEET 10  
FOR LINE &  
CURVE TABLES

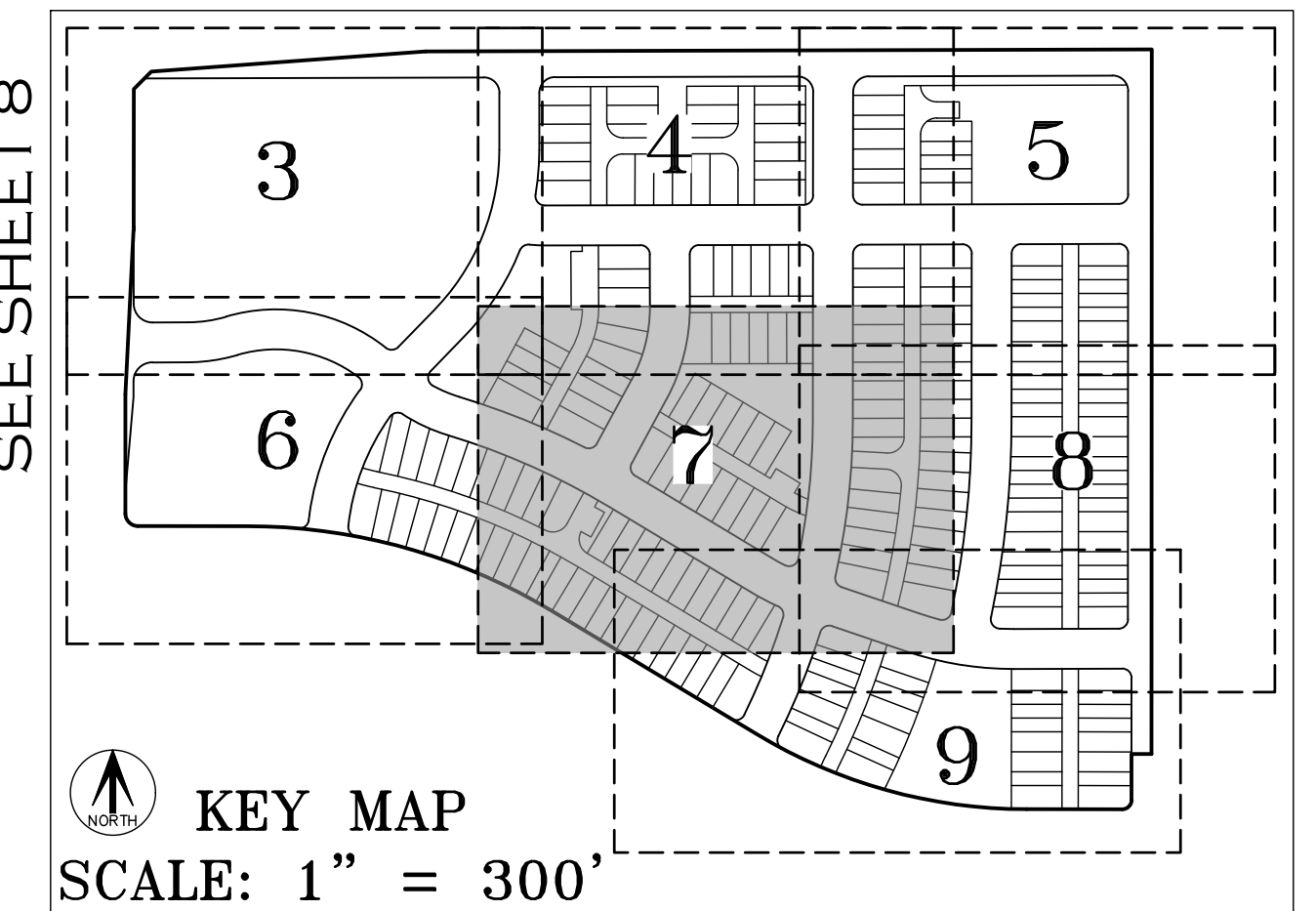



<b>AzTEC</b> CONSULTANTS, INC. <small>300 East Mineral Ave., Suite 1 Littleton, Colorado 80122 Phone: (303) 713-1898 Fax: (303) 713-1897 www.aztecconsultants.com</small>	<b>DEVELOPER</b> INTEGRITY LAND VENTURES, LLC  7200 S. ALTON WAY CENTENNIAL, CO 80112		<b>DATE OF PREPARATION:</b> 2023-11-30
	<b>SCALE:</b> 1" = 30'		<b>SHEET 6 OF 10</b>
	AzTec Proj. No.: 192723-01    Drawn By: BAM		



SITUATED IN THE NORTHWEST QUARTER OF SECTION 29,  
TOWNSHIP 4 SOUTH, RANGE 65 WEST OF THE SIXTH PRINCIPAL MERIDIAN,  
CITY OF AURORA, COUNTY OF ARAPAHOE, STATE OF COLORADO.

SEE SHEET 8




**KEY MAP**  
**SCALE: 1" = 300'**

1 ● FOUND NO. 5 REBAR WITH 1-1/4" YELLOW  
PLASTIC CAP STAMPED "AZTEC PLS 37933"

S.E. SIDEWALK EASEMENT

U.E. UTILITY EASEMENT

A.E. ACCESS EASEMENT

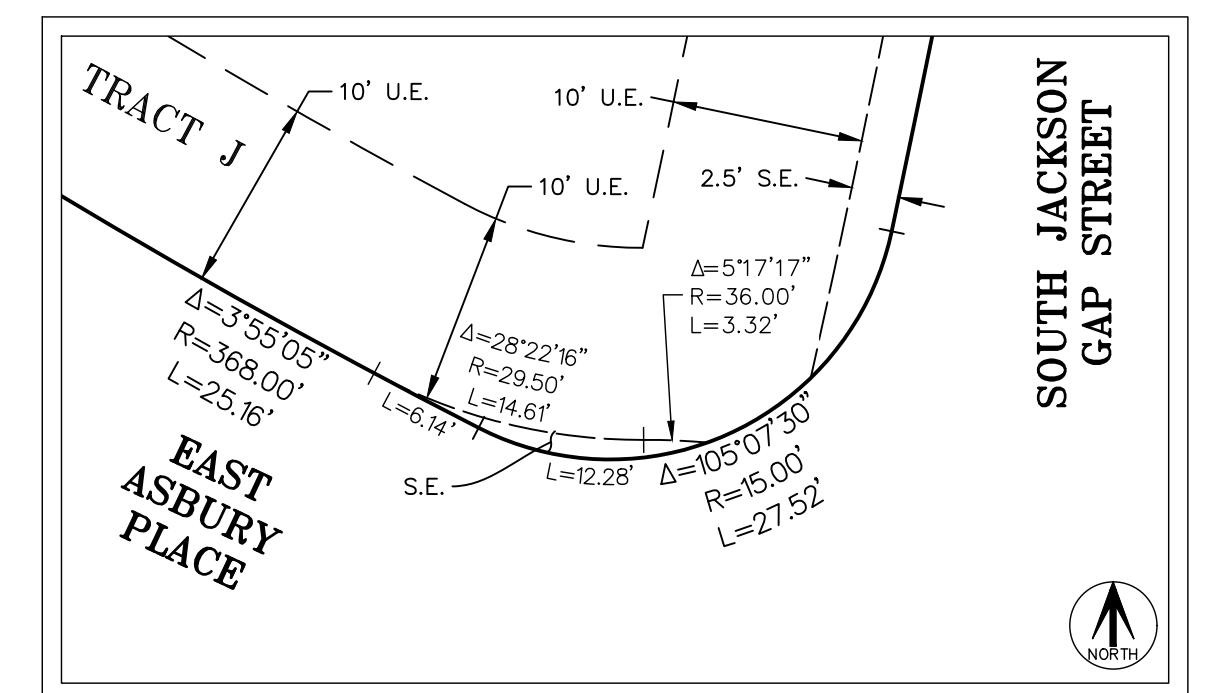
(ROW) RIGHT-OF-WAY

(NR) DENOTES NON-RADIAL

## BLOCK NUMBER

△ PERMANENT BOXES WITH A REASONABLY  
PERMANENT MONUMENT BEARING THE LICENSE  
NUMBER OF THE RESPONSIBLE SURVEYOR, TO  
BE SET AFTER CONSTRUCTION IS COMPLETE  
PER SEC. 147-4-A (LAURORA CITY CODE AND  
PER SEC. 38-51-105-(9) (c) & (b)  
COLORADO REVISED STATUTES 2020.

■ WATER METER EASEMENT



DETAIL "C"  
SCALE: 1" = 10'

SEE SHEET 10  
FOR LINE &  
CURVE TABLES

FOR REVIEW

FOR AND ON BEHALF OF  
AZTEC CONSULTANTS, INC.

**AZTEC**  
CONSULTANTS, INC.

300 East Mineral Ave., Suite 1  
Littleton, Colorado 80122  
Phone: (303) 713-1898  
Fax: (303) 713-1897  
[www.aztecconsultants.com](http://www.aztecconsultants.com)

te 1 DEVELOPER  
INTEGRITY LAND VENTURES, LLC

7200 S. ALTON WAY  
CENTENNIAL, CO 80112

DATE OF	2023-11-30
---------	------------

SCALE: 1" = 30'

SHEET 7 OF 10

AzTec Proj. No.: 192723-01      Drawn By: BAM

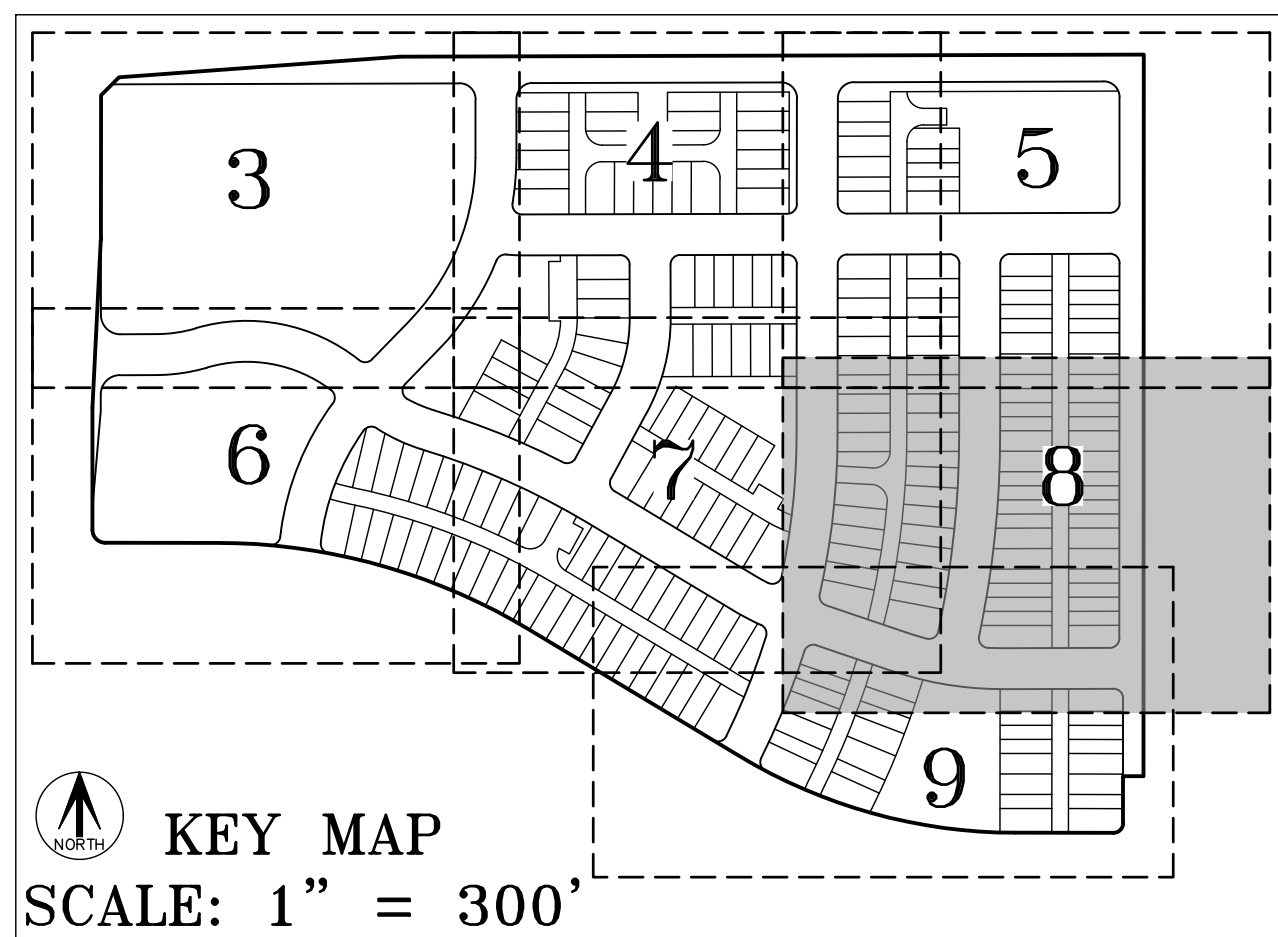


# HARVEST CROSSING SUBDIVISION FILING NO. 2

SITUATED IN THE NORTHWEST QUARTER OF SECTION 29,  
TOWNSHIP 4 SOUTH, RANGE 65 WEST OF THE SIXTH PRINCIPAL MERIDIAN,  
CITY OF AURORA, COUNTY OF ARAPAHOE, STATE OF COLORADO.

SEE SHEET 5

SEE SHEET 5



LEGEND	
U.E.	UTILITY EASEMENT
(ROW)	RIGHT-OF-WAY
(NR)	DENOTES NON-RADIAL
##	BLOCK NUMBER
▲	MONUMENT BOXES WITH A REASONABLY PERMANENT MONUMENT BEARING THE LICENSE NUMBER OF THE RESPONSIBLE SURVEYOR, TO BE SET AFTER CONSTRUCTION IS COMPLETE PER SEC. 147-47 AURORA CITY CODE AND PER SEC. 38-51-105-(9) (a) & (b) COLORADO REVISED STATUTES 2020.
■	WATER METER EASEMENT

SEE SHEET 10  
FOR LINE &  
CURVE TABLES

FOR REVIEW



HARVEST CROSSING SUBDIVISION FILING NO. 2

SITUATED IN THE NORTHWEST QUARTER OF SECTION 29,  
TOWNSHIP 4 SOUTH, RANGE 65 WEST OF THE SIXTH PRINCIPAL MERIDIAN,  
CITY OF AURORA, COUNTY OF ARAPAHOE, STATE OF COLORADO.





# HARVEST CROSSING SUBDIVISION FILING NO. 2

SITUATED IN THE NORTHWEST QUARTER OF SECTION 29,  
TOWNSHIP 4 SOUTH, RANGE 65 WEST OF THE SIXTH PRINCIPAL MERIDIAN,  
CITY OF AURORA, COUNTY OF ARAPAHOE, STATE OF COLORADO.

LINE TABLE		
LINE	BEARING	LENGTH
L1	N89°58'17"W	32.00'
L2	S00°01'47"W	73.43'
L3	N89°58'08"W	153.02'
L4	N89°57'19"W	175.00'
L5	N00°02'41"E	190.81'
L6	N00°02'41"E	220.66'
L7	N45°02'41"E	39.64'
L8	S89°50'17"W	56.78'
L9	N89°50'17"E	36.17'
L10	S00°01'47"W	26.00'
L11	N89°50'17"E	35.99'
L12	S89°50'17"W	57.22'
L13	S00°02'41"W	25.82'
L14	N07°50'41"E	9.29'
L15	S23°11'23"W	3.46'
L16	N28°28'37"E	5.53'
L17	S82°18'01"E	2.11'
L18	S71°14'20"E	0.54'
L19	N22°16'39"E	0.74'
L20	N22°16'39"E	0.74'
L21	S68°02'53"E	12.13'
L22	N22°16'39"E	0.84'
L23	N00°09'42"W	5.00'
L24	N89°50'18"E	5.02'
L25	N89°50'18"E	4.98'
L26	S00°09'42"E	5.00'
L27	S00°02'41"W	1.23'
L28	S89°50'18"W	5.00'
L29	S89°50'17"W	6.20'
L30	N89°50'17"E	5.39'
L31	N89°58'13"W	3.00'
L32	N00°01'47"E	5.00'
L33	S89°58'13"E	3.00'
L34	N89°58'13"W	3.00'
L35	N00°01'47"E	5.00'
L36	S89°58'13"E	3.00'
L37	N89°58'13"W	3.00'
L38	N00°01'47"E	5.00'
L39	S89°58'13"E	3.00'
L40	N89°58'13"W	5.00'
L41	N00°01'47"E	5.00'
L42	S89°58'13"E	5.00'
L43	N00°09'43"W	5.00'
L44	N89°50'17"E	5.00'
L45	S89°50'17"W	5.00'
L46	N00°09'43"W	10.00'
L47	N89°50'17"E	5.00'
L48	S79°29'16"E	4.29'
L49	S00°09'43"E	0.92'
L50	N89°50'17"E	0.60'
L51	N79°29'16"W	5.00'

LINE TABLE		
LINE	BEARING	LENGTH
L52	S61°31'23"E	5.00'
L53	S28°28'37"W	5.21'
L54	N61°31'23"W	5.00'
L55	N61°31'23"W	5.00'
L56	N28°28'37"E	5.00'
L57	N89°50'17"E	5.00'
L58	S00°09'43"E	5.00'
L59	N00°09'43"W	5.00'
L60	N89°50'17"E	10.00'
L61	S00°09'43"E	5.00'
L62	N00°09'43"W	5.00'
L63	N89°50'17"E	10.00'
L64	S00°09'43"E	5.00'
L65	N00°02'41"E	5.00'
L66	N89°50'17"E	5.00'
L67	S00°02'41"W	5.00'
L68	S00°09'43"E	5.00'
L69	N89°50'17"E	5.00'
L70	N00°09'43"W	5.00'
L71	S00°09'43"E	5.00'
L72	N89°50'17"E	10.00'
L73	N00°09'43"W	5.00'
L74	S00°09'43"E	5.00'
L75	N89°50'17"E	10.00'
L76	N00°09'43"W	5.00'
L77	S00°01'02"E	5.00'
L78	N89°50'17"E	5.00'
L79	S28°28'37"W	5.03'
L80	N67°24'18"W	5.03'
L81	S13°17'44"W	5.00'
L82	N14°55'02"E	5.00'
L83	S14°55'02"W	5.00'
L84	N18°31'53"E	5.00'
L85	S18°31'53"W	5.00'
L86	N21°47'45"E	5.00'
L87	S21°47'45"W	5.00'
L88	N25°03'29"E	5.00'
L89	S25°03'29"W	5.00'
L90	S75°20'20"E	5.00'
L91	S13°46'59"W	5.00'
L92	N13°46'59"E	5.00'
L93	S17°21'59"W	5.00'
L94	N17°21'59"E	5.00'
L95	S20°56'59"W	5.00'
L96	N19°20'34"E	5.00'
L97	S24°31'59"W	5.00'
L98	N24°31'59"E	5.00'
L99	S61°31'23"E	5.00'
L100	N28°28'37"E	10.00'
L101	N61°31'23"W	5.00'
L102	N61°31'23"W	5.00'

LINE TABLE		
LINE	BEARING	LENGTH
L103	N28°28'37"E	10.00'
L104	S61°31'23"E	5.00'
L105	N65°56'17"W	5.01'
L106	N28°28'37"E	5.01'
L107	N58°57'26"W	5.00'
L108	N31°02'34"E	5.00'
L109	S31°02'34"W	5.00'
L110	N58°57'26"W	10.00'
L111	N31°02'34"E	5.00'
L112	S31°02'34"W	5.00'
L113	N58°57'26"W	10.00'
L114	N31°02'34"E	5.00'
L115	N31°02'34"E	5.00'
L116	S58°57'26"E	5.00'
L117	S58°57'26"E	5.01'
L118	N28°28'37"E	5.01'
L119	S31°02'34"W	5.00'
L120	S58°57'26"E	10.00'
L121	N31°02'34"E	5.00'
L122	S31°02'34"W	5.00'
L123	S58°57'26"E	10.00'
L124	N31°02'34"E	5.00'
L125	S31°02'34"W	5.00'
L126	S58°57'26"E	10.00'
L127	N31°02'34"E	5.00'
L128	S31°02'34"W	5.00'
L129	S58°57'26"E	5.00'
L130	N28°28'37"E	10.16'
L131	S61°31'23"E	5.00'
L132	S28°28'37"W	5.00'
L133	S58°57'26"E	5.00'
L134	S31°02'34"W	5.00'
L135	N31°02'34"E	5.00'
L136	S58°57'26"E	10.00'
L137	S31°02'34"W	5.00'
L138	N31°02'34"E	5.00'
L139	S58°57'26"E	10.00'
L140	S31°02'34"W	5.00'
L141	N31°02'34"E	5.00'
L142	S58°57'26"E	10.00'
L143	S31°02'34"W	5.00'
L144	N31°02'34"E	5.00'
L145	S58°57'26"E	10.00'
L146	S31°02'34"W	5.00'
L147	N31°02'34"E	5.00'
L148	S58°57'26"E	5.00'
L149	N28°06'59"E	5.00'
L150	S29°15'29"W	5.00'
L151	S31°02'34"W	5.00'
L152	S58°57'26"E	10.00'
L153	N31°02'34"E	5.00'

LINE TABLE		
LINE	BEARING	LENGTH
L154	S31°02'34"W	5.00'
L155	S58°57'26"E	10.00'
L156	N31°02'34"E	5.00'
L157	S31°02'34"W	5.00'
L158	S58°57'26"E	10.00'
L159	N31°02'34"E	5.00'
L160	N71°25'10"W	5.00'
L161	S71°25'10"E	5.00'
L162	S71°25'10"E	3.42'
L163	S19°30'17"W	5.00'
L164	N71°25'10"W	3.34'
L165	S70°29'43"E	3.22'
L166	S19°30'17"W	5.00'
L167	N70°29'43"W	3.22'
L168	S89°50'17"W	5.00'
L169	S00°01'47"W	5.00'
L170	N89°50'17"E	5.00'
L171	S31°02'34"W	5.00'
L172	S58°57'26"E	10.00'
L173	N31°02'34"E	5.00'
L174	S31°02'34"W	5.00'
L175	S58°57'26"E	10.00'
L176	N31°02'34"E	5.00'
L177	S60°56'26"E	5.03'
L178	N67°59'59"W	5.00'
L179	S67°59'59"E	5.00'
L180	S65°30'16"E	3.06'
L181	S24°02'00"W	5.00'
L182	N65°30'16"W	3.10'
L183	S65°30'16"E	5.00'
L184	N65°30'16"W	5.00'
L185	N89°58'13"W	3.00'
L186	S00°01'47"W	5.00'
L187	S89°58'13"E	3.00'
L188	N89°58'13"W	3.00'
L189	S00°01'47"W	5.00'
L190	S89°58'13"E	3.00'
L191	S89°58'13"E	3.00'
L192	N00°01'47"E	5.00'
L193	N89°58'13"W	3.00'
L194	N89°58'13"W	5.00'
L195	S00°01'47"W	10.00'
L196	S89°58'13"E	5.00'
L197	N89°58'13"W	3.00'
L198	S00°01'47"W	5.00'
L199	S89°58'13"E	3.00'
L200	S89°58'08"E	5.00'
L201	N00°01'47"E	5.00'
L202	S89°50'17"W	26.00'
L203	S89°50'17"W	18.00'

CURVE TABLE			
CURVE	DELTA	RADIUS	LENGTH
C1	89°59'43"	15.00'	23.56'
C2	89°45'53"	20.00'	31.33'
C3	2°48'30"	115.00'	5.64'
C4	90°12'24"	30.00'	47.23'
C5	16°17'56"	218.00'	62.01'
C6	84°17'33"	15.00'	22.07'
C7	90°12'24"	25.00'	39.36'
C8	89°47'36"	25.00'	39.18'
C9	9°30'53"	432.00'	71.74'
C10	99°43'17"	15.00'	26.11'
C11	73°37'39"	15.00'	19.28'
C12	5°42'17"	282.00'	28.08'
C13	28°38'20"	137.00'	68.48'
C14	28°38'20"	163.00'	81.47'
C15	90°00'00"	15.00'	23.56'
C16	90°00'00"	15.00'	23.56'
C17	89°47'36"	26.00'	40.75'
C18	90°12'24"	26.00'	40.93'
C19	89°47'36"	26.00'	40.75'
C20	90°12'24"	26.00'	40.93'
C21	90°12'24"	25.00'	39.36'
C22	89°47'36"	15.00'	23.51'
C23	90°12'24"	15.00'	23.62'
C24	89°47'36"	15.00'	23.51'
C25	90°12'24"	15.00'	23.62'
C26	89°47'36"	25.00'	39.18'
C27	90°20'32"	26.00'	41.00'
C28	89°48'30"	26.00'	40.75'

CURVE TABLE			
CURVE	DELTA	RADIUS	LENGTH
C29	90°12'24"	15.00'	23.62'
C30	89°47'36"	15.00'	23.51'
C31	90°11'30"	15.00'	23.61'
C32	89°48'30"	15.00'	23.51'
C33	90°11'29"	25.00'	39.35'
C34	89°47'36"	30.00'	47.02'
C35	16°17'56"	282.00'	80.22'
C36	89°17'04"	15.00'	23.37'
C37	87°11'06"	15.00'	22.82'
C38	85°43'21"	15.00'	22.44'
C39	5°57'29"	263.00'	27.35'
C40	5°46'00"	237.00'	23.85'
C41	87°30'33"	15.00'	22.91'
C42	16°08'37"	282.00'	79.46'
C43	105°23'28"	15.00'	27.59'
C44	12°01'45"	218.00'	45.77'
C45	1°09'24"	345.00'	6.96'
C46	2°50'23"	250.00'	12.39'
C47	1°53'03"	405.00'	13.32'
C48	1°45'47"	250.00'	7.69'
C49	5°55'10"	250.00'	25.83'
C50	5°17'15"	250.00'	23.07'
C51	88°37'42"	15.00'	23.20'
C52	88°28'12"	26.00'	40.15'
C53	87°26'03"	26.00'	39.68'
C54	87°26'03"	15.00'	22.89'
C55	0°20'14"	1283.00'	7.55'
C56	0°22'53"	1309.00'	8.71'

CURVE TABLE			
CURVE	DELTA	RADIUS	LENGTH
C57	10°41'23"	137.00'	25.56'
C58	3°55'05"	368.00'	25.16'
C59	105°07'30"	15.00'	27.52'
C60	1°16'28"	1214.00'	27.00'
C61	91°52'02"	26.00'	41.69'
C62	91°53'43"	26.00'	41.70'
C63	83°59'02"	15.00'	21.99'
C64	6°34'49"	432.00'	49.61'
C65	82°45'05"	15.00'	21.66'
C66	91°18'35"	15.00'	23.90'
C67	4°13'20"	468.00'	34.49'
C68	92°25'45"	15.00'	24.20'
C69	1°41'19"	1169.00'	34.46'
C70	1°24'55"	1296.00'	32.01'
C71	0°21'34"	1296.00'	8.13'
C72	11°50'57"	150.00'	31.02'
C73	11°29'38"	150.00'	30.09'
C74	1°29'54"	1227.00'	32.09'
C75	1°29'45"	1227.00'	32.04'
C76	99°17'16"	15.00'	25.99'
C77	2°46'08"	468.00'	22.62'
C78	89°48'30"	15.00'	23.51'
C79	90°11'30"	15.00'	23.61'
C80	2°20'00"	155.00'	6.31'
C81	4°01'17"	237.00'	16.63'
C82	4°01'17"	263.00'	18.46'
C83	88°42'55"	15.00'	23.23'
C84	94°50'04"	15.00'	24.83'

CURVE TABLE			
CURVE	DELTA	RADIUS	LENGTH
C85	4°44'30"	263.00'	21.76'
C86	4°15'31"	237.00'	17.62'
C87	4°31'52"	250.00'	19.77'
C88	4°33'36"	250.00'	19.90'
C89	1°40'09"	1100.00'	32.04'
C90	4°01'17"	250.00'	17.55'
C91	10°20'48"	21.00'	3.79'
C92	16°23'44"	21.00'	6.01'
C93	3°08'30"	168.00'	9.21'
C94	1°37'59"	168.00'	4.79'
C95	0°16'13"	1060.00'	5.00'
C96	0°32'26"	1060.00'	10.00'
C97	0°32'26"	1060.00'	10.00'
C98	0°32'26"	1060.00'	10.00'
C99	0°32'26"	1060.00'	10.00'
C100	0°33'39"	358.00'	3.50'
C101	0°33'34"	1024.00'	10.00'
C102	0°33'34"	1024.00'	10.00'
C103	0°33'34"	1024.00'	10.00'
C104	0°33'34"	1024.00'	10.00'
C105	0°16'47"	1024.00'	5.00'
C106	0°16'47"	1024.00'	5.00'
C107	0°13'49"	1245.00'	5.00'
C108	0°16'35"	1050.50'	5.07'
C109	0°27'37"	1245.00'	10.00'
C110	0°13'49"	1245.00'	5.00'
C111	86°33'30"	52.00'	78.56'
C112	90°00'00"	52.00'	81.68'