

COLORADO LAND SURVEY MONUMENT RECORD

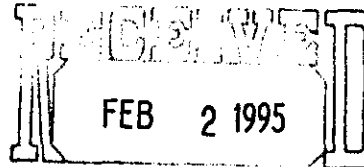
REPORT ONE MONUMENT ONLY ON THIS FORM
REPRODUCTION OF THIS FORM IS AUTHORIZED.

All items to be filled in by the Land Surveyor using permanent black lettering and lines which can be reproduced. (Except)*

1. TYPE OF MONUMENT (Check one)
- | | |
|--|--------------------------------------|
| <input type="checkbox"/> Section Corner | <input type="checkbox"/> Bench mark |
| <input checked="" type="checkbox"/> Quarter Corner | <input type="checkbox"/> Other _____ |

2. DESCRIPTION OF MONUMENT FOUND AND MONUMENT MARKINGS.

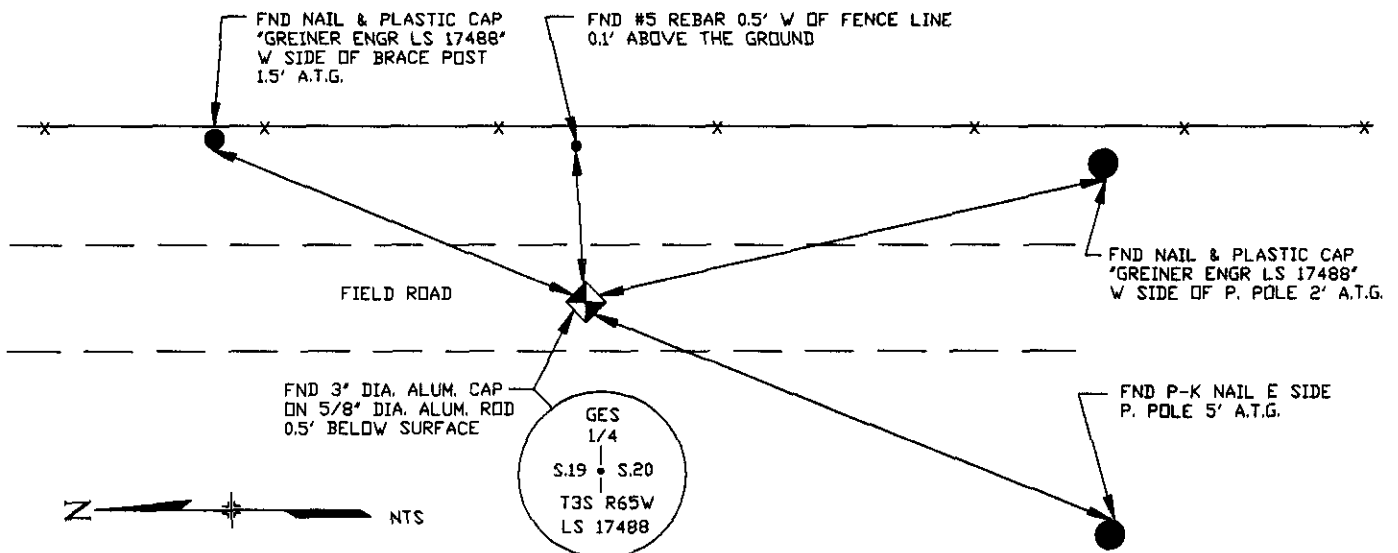
FOUND 3" DIA. ALUMINUM CAP (STAMPED AS SHOWN IN SKETCH BELOW) ON 5/8" ALUMINUM ROD
0.5' BELOW SURFACE.



3. DESCRIPTION OF MONUMENT AND MONUMENT MARKINGS ESTABLISHED BY YOU TO PERPETUATE THE LOCATION OF THIS POINT.

COLO. ST. BD. OF REG.
FOR PE AND PLS

4. SKETCH SHOWING RELATIVE LOCATION OF MONUMENT ACCESSORIES AND REFERENCE POINTS STATING WHETHER FOUND OR SET. SHOW SUPPORTING AND/OR CONTRADICTORY EVIDENCE WHERE APPLICABLE



Date of Field Work 6-7-94

5. CERTIFICATION

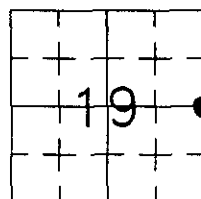
This is to certify that I was in responsible charge of the survey work described in this record and that to the best of my knowledge the information presented herein is true and correct.

Date 6-9-94

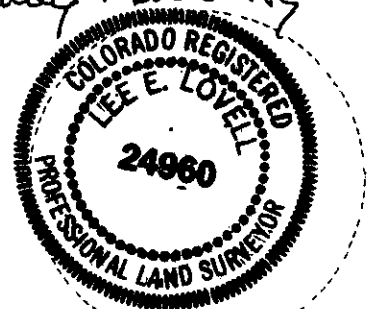
Signature Lee E. Lovell PLS 24960
Firm Name: WESTERN STATES SURVEYING, INC.
Firm Address: 19029 EAST PLAZA DRIVE #252 PARKER, CO. 80134
Phone: (303) 841-7436

E470 Public Highway Authority

6. LOCATION DIAGRAM
1" = 1 Mile



• = Location of Monument



Surveyor's Seal

*(Do not fill in)

Accepted for Filing

State Board of Registration for Professional Engineers and Land Surveyors:

By APR 03 1995

Date COLO. REG.

RECEIVED AT THE OFFICE OF THE COUNTY CLERK:

_____ COUNTY

By _____

Date _____

Record to be filed by Index Reference Number, numerically, then alphabetically, under appropriate Township, Range, and Meridian.

7. SEC. 19, T 3 S, R 65 W, 6th P.M.
COUNTY ADAMS INDEX REF. NO. 5-L
8. SEC. _____, T _____, R _____, _____ P.M.
COUNTY _____ INDEX REF. NO. _____

COLORADO LAND SURVEY MONUMENT RECORD

Department of Regulatory Agencies

Board of Licensure for Architects, Professional Engineers and Professional Land Surveyors

1560 Broadway, Suite 1350

Denver, CO 80202

Phone: (303) 894-7800; Fax: (303) 984-2310; EMAIL: aes@dora.state.co.us; V/TDD 711

RECEIVED
AUG 14 2018

COLO. ST. BD. OF LIC.

FOR ARC, PE, AND PLS

Report one monument only on this form - Reproduction of this form is authorized by the Board of Licensure for Architects, Professional Engineers and Professional Land Surveyors. All items are to be filled in by the Land Surveyor using **PERMANENT BLACK LETTERING** and lines which can be reproduced.

1. TYPE OF MONUMENT: ☒ SECTION CORNER ☐ QUARTER CORNER ☐ SIXTEENTH CORNER ☐ OTHER _____

2. DESCRIPTION AND DATE OF MONUMENT FOUND:

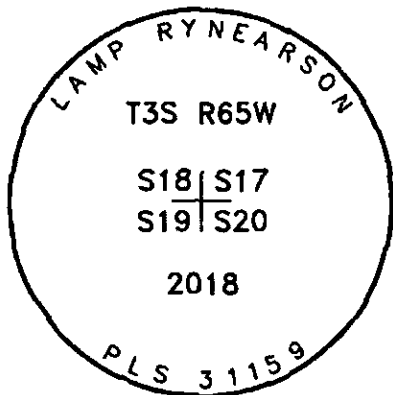
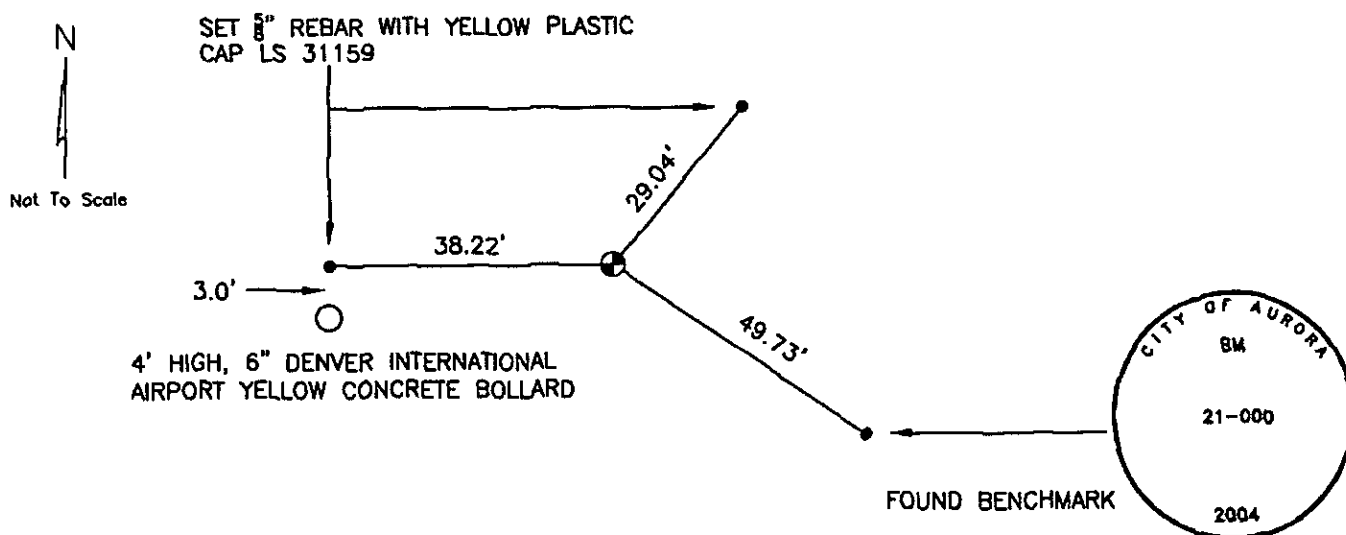
NO MONUMENT OR RECORD TIES FOUND. ENTIRE AREA DISTURBED BY RECENT CONSTRUCTION ACTIVITY.

3. DESCRIPTION OF MONUMENT SET BY YOU TO PERPETUATE THE LOCATION OF THIS POINT:

SET 3/4" X 30" REBAR WITH 3 1/4" ALUMINUM CAP, PLS 31159, 2018, FLUSH WITH GROUND.

POSITION OF PRIOR MONUMENT (1989 BRASS CAP, LS 16848, IN RANGE BOX) ESTABLISHED BY TIES TO EAST AND SOUTH QUARTER CORNERS OF SECTION 18 AS SHOWN ON WELL LOCATION PLAT BY UTAH ENGINEERING AND LAND SURVEYING FOR BISON EXPLORATION DATED JANUARY 13, 2017. FOUND OR SET REFERENCE TIES AS SHOWN.

4. SKETCH SHOWING RELATIVE LOCATION OF MONUMENT, ACCESSORIES AND REFERENCE POINTS STATING WHETHER FOUND OR SET. SHOW SUPPORTING AND/OR CONTRADICTORY EVIDENCE WHERE APPLICABLE:



Stamping on Cap

5. CERTIFICATION

This is to certify that I was in responsible charge of the surveying work described in this record and that to the best of my knowledge the information presented herein is true and correct.

Name (Please Print): Laine A. Landau

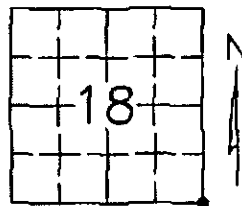
Firm Name: Lamp, Rynearson & Associates, Inc.

Firm Address: 4715 Innovation Drive, Fort Collins, CO 80525

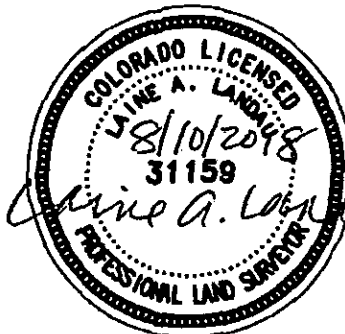
Phone: (970) 226-0342

6. LOCATION DIAGRAM

1" = 1 Mile



● = Location of Monument



Signature/Date through Seal

7. SEC 18 T 3S R 65W, 6TH P.M.

COUNTY ADAMS INDEX REF NUMBER 5-N

**8. SEC _____ T _____ R _____, 6TH P.M.

COUNTY _____ INDEX REF NUMBER _____

** To be used only for monuments located on county lines.



Dora
Department of Regulatory Agencies

Rev. 02/01/2011

a. Date of Field Work to Establish, Restore or Rehabilitate Monument: 02/12/2018

b. Date Monument was used as a Control Corner: _____
(Surveyor, do not fill in)

ACCEPTED

SEP 30 2018

COLO. ST. BD. OF LIC.
FOR ARC, PE & PLS

RECEIVED AT OFFICE OF THE COUNTY CLERK
_____ COUNTY

BY: _____

DATE: _____

Record to be filed numerically by Index Reference Number, then alphabetically by letter in the index reference number, then under appropriate Township, Range, and Meridian.

COLORADO LAND SURVEY MONUMENT RECORD

Department of Regulatory Agencies
Board of Licensure for Architects, Professional Engineers and Professional Land Surveyors
1560 Broadway, Suite 1350
Denver, CO 80202
Phone (303) 894-7800; Fax (303) 894-2310; EMAIL des@dora.state.co.us; V/TDD 711

OCT 08 2021

Report one monument only on this form - Reproduction of this form is authorized. PE & PLS
All items are to be filled in by the Land Surveyor using **PERMANENT BLACK LETTERING** and lines which can be reproduced.

1. TYPE OF MONUMENT: ☐ SECTION CORNER ☒ QUARTER CORNER ☐ SIXTEENTH CORNER ☐ OTHER _____

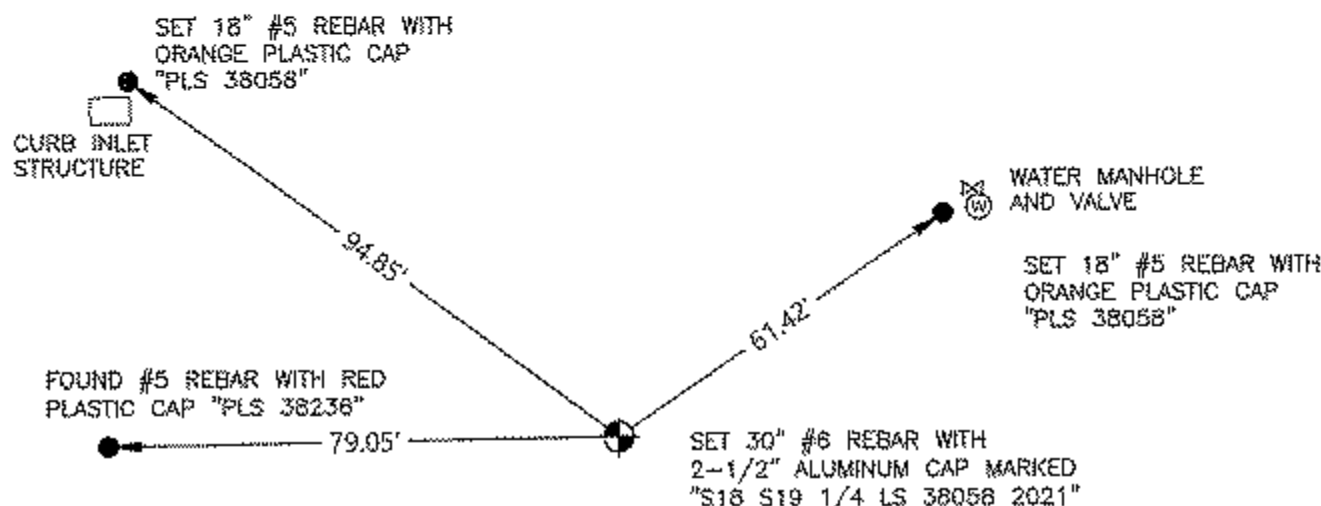
2. DESCRIPTION AND DATE OF MONUMENT FOUND:

NO MONUMENT FOUND

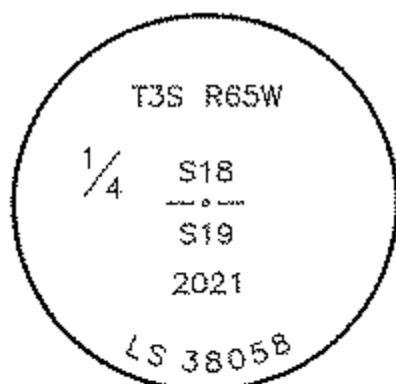
3. DESCRIPTION OF MONUMENT SET BY YOU TO PERPETUATE THE LOCATION OF THIS POINT:

SET 30" #6 REBAR WITH 2-1/2" ALUMINUM CAP MARKED "S18 S19 1/4 LS 38058 2021"

4. SKETCH SHOWING RELATIVE LOCATION OF MONUMENT, ACCESSORIES AND REFERENCE POINTS STATING WHETHER FOUND OR SET, SHOW SUPPORTING AND/OR CONTRADICTIONARY EVIDENCE WHERE APPLICABLE:



Not to scale



Stamping on Cap

- a. Date of Field Work to Establish, Restore or Rehabilitate Monument: 3/9/2021
b. Date Monument was used as a Control corner: 3/31/2021

(Surveyor, do not fill in)

OCT 31 2021

COLO. ST. BD. OF L.
ENG. & SURV. DIV.

RECEIVED AT OFFICE OF THE COUNTY CLERK
_____ COUNTY

BY: _____

DATE: _____

Record to be filed numerically by Index Reference Number, then alphabetically by letter in the index reference number, then under appropriate Township, Range, and Meridian.

5. CERTIFICATION

This is to certify that I was in responsible charge of the surveying work described in this record and that to the best of my knowledge the information presented herein is true and correct.

Name (Please Print): DALLAS WILLSON

Firm Name: SURVWEST

Firm Address: 6501 E. BELLEVUE AVE., SUITE 300
ENGLEWOOD, CO 80111

Phone: (720) 259 - 9316

6. LOCATION DIAGRAM

1" = 1 Mile



● = Location of Monument



Signature/Date through Seal

7. SEC 18 T 3 S R 65 W, 6TH P.M.
COUNTY ADAMS INDEX REF NUMBER 3-N

**8. SEC _____ T _____ R _____ P.M.
COUNTY _____ INDEX REF NUMBER _____

** To be used only for monuments located on county lines



Dora
Department of Regulatory Agencies

Rev.02/01/2011

Parcel Map Check Report

Date: 4/24/2024 9:48:59 AM

Parcel Name: PLAT - TAH F28 BNDY

Description: TAH F28 BNDY

Process segment order counterclockwise: False

Enable mapcheck across chord: False

North: 711,276.262' East: 221,627.688'

Segment# 1: Line

Course: N89° 08' 12"E Length: 1,071.55'

North: 711,292.408' East: 222,699.117'

Segment# 2: Line

Course: S0° 20' 44"E Length: 517.40'

North: 710,775.017' East: 222,702.237'

Segment# 3: Line

Course: S89° 59' 12"E Length: 54.03'

North: 710,775.005' East: 222,756.267'

Segment# 4: Line

Course: S0° 20' 41"E Length: 64.00'

North: 710,711.006' East: 222,756.652'

Segment# 5: Line

Course: N89° 59' 12"W Length: 54.03'

North: 710,711.018' East: 222,702.622'

Segment# 6: Line

Course: S0° 20' 44"E Length: 354.13'

North: 710,356.895' East: 222,704.758'

Segment# 7: Line

Course: S89° 40' 56"W Length: 75.68'

North: 710,356.475' East: 222,629.079'

Segment# 8: Line

Course: S76° 42' 09"W Length: 84.73'

North: 710,336.987' East: 222,546.621'

Segment# 9: Line

Course: N89° 59' 12"W Length: 62.77'

North: 710,337.001' East: 222,483.851'

Segment# 10: Line

Course: N77° 34' 07"W Length: 33.98'

North: 710,344.316' East: 222,450.668'

Segment# 11: Line

Course: N89° 15' 26"W Length: 50.00'
North: 710,344.964' East: 222,400.672'

Segment# 12: Line
Course: N89° 59' 12"W Length: 838.63'
North: 710,345.159' East: 221,562.042'

Segment# 13: Line
Course: N0° 00' 48"E Length: 80.00'
North: 710,425.159' East: 221,562.060'

Segment# 14: Curve
Length: 31.42' Radius: 20.00'
Delta: 90°00'00" Tangent: 20.00'
Chord: 28.28' Course: N45° 00' 48"E
Course In: S89° 59' 12"E Course Out: N0° 00' 48"E
RP North: 710,425.155' East: 221,582.060'
End North: 710,445.155' East: 221,582.065'

Segment# 15: Line
Course: N0° 00' 48"E Length: 64.00'
North: 710,509.155' East: 221,582.080'

Segment# 16: Curve
Length: 31.42' Radius: 20.00'
Delta: 89°59'59" Tangent: 20.00'
Chord: 28.28' Course: N44° 59' 07"W
Course In: N0° 00' 53"E Course Out: N89° 59' 08"W
RP North: 710,529.155' East: 221,582.085'
End North: 710,529.160' East: 221,562.085'

Segment# 17: Line
Course: N0° 00' 48"E Length: 160.00'
North: 710,689.160' East: 221,562.122'

Segment# 18: Curve
Length: 31.42' Radius: 20.00'
Delta: 90°00'00" Tangent: 20.00'
Chord: 28.28' Course: N45° 00' 48"E
Course In: S89° 59' 12"E Course Out: N0° 00' 48"E
RP North: 710,689.155' East: 221,582.122'
End North: 710,709.155' East: 221,582.127'

Segment# 19: Line
Course: N0° 00' 48"E Length: 64.00'
North: 710,773.155' East: 221,582.142'

Segment# 20: Curve
Length: 31.42' Radius: 20.00'
Delta: 90°00'00" Tangent: 20.00'

Chord: 28.28' Course: N44° 59' 12"W
Course In: N0° 00' 48"E Course Out: N89° 59' 12"W
RP North: 710,793.155' East: 221,582.147'
End North: 710,793.160' East: 221,562.147'

Segment# 21: Line
Course: N0° 00' 48"E Length: 243.88'
North: 711,037.040' East: 221,562.203'

Segment# 22: Line
Course: N4° 46' 38"E Length: 120.42'
North: 711,157.042' East: 221,572.232'

Segment# 23: Line
Course: N0° 00' 48"E Length: 93.77'
North: 711,250.812' East: 221,572.254'

Segment# 24: Curve
Length: 13.29' Radius: 25.00'
Delta: 30°27'20" Tangent: 6.81'
Chord: 13.13' Course: N15° 14' 28"E
Course In: S89° 59' 12"E Course Out: N59° 31' 52"W
RP North: 711,250.806' East: 221,597.254'
End North: 711,263.482' East: 221,575.706'

Segment# 25: Line
Course: N89° 08' 12"E Length: 1.27'
North: 711,263.502' East: 221,576.976'

Segment# 26: Curve
Length: 29.86' Radius: 64.50'
Delta: 26°31'31" Tangent: 15.20'
Chord: 29.59' Course: N75° 52' 26"E
Course In: N0° 51' 48"W Course Out: S27° 23' 19"E
RP North: 711,327.994' East: 221,576.004'
End North: 711,270.724' East: 221,605.676'

Segment# 27: Curve
Length: 22.92' Radius: 49.50'
Delta: 26°31'31" Tangent: 11.67'
Chord: 22.71' Course: N75° 52' 26"E
Course In: S27° 23' 19"E Course Out: N0° 51' 48"W
RP North: 711,226.773' East: 221,628.447'
End North: 711,276.267' East: 221,627.701'

Perimeter: 4,279.99' Area: 1,068,109Sq.Ft.
Error Closure: 0.014 Course: N68° 59' 23"E
Error North : 0.0049 East: 0.0127

Precision 1: 305,715.71

Parcel Map Check Report

Date: 4/24/2024 9:40:41 AM

Parcel Name: PLAT - B09 L01

Description: 1

Process segment order counterclockwise: False

Enable mapcheck across chord: False

North: 711,327.990' East: 225,378.633'

Segment# 1: Line

Course: S89° 59' 12"E Length: 5.00'

North: 711,327.989' East: 225,383.633'

Segment# 2: Line

Course: S0° 00' 48"W Length: 100.00'

North: 711,227.989' East: 225,383.610'

Segment# 3: Line

Course: N89° 59' 12"W Length: 45.00'

North: 711,228.000' East: 225,338.610'

Segment# 4: Line

Course: N0° 00' 48"E Length: 100.00'

North: 711,328.000' East: 225,338.633'

Segment# 5: Line

Course: S89° 59' 12"E Length: 40.00'

North: 711,327.990' East: 225,378.633'

Perimeter: 290.00' Area: 4,500Sq.Ft.

Error Closure: 0.000 Course: N0° 00' 00"E

Error North : 0.0000 East: 0.0000

Precision 1: 290,000,000.00

Parcel Name: PLAT - B09 L02

Description: 2

Process segment order counterclockwise: False

Enable mapcheck across chord: False

North: 711,327.989' East: 225,383.633'

Segment# 1: Line

Course: S89° 59' 12"E Length: 45.00'

North: 711,327.979' East: 225,428.633'

Segment# 2: Line

Course: S0° 00' 48"W Length: 100.00'

North: 711,227.979' East: 225,428.610'

Segment# 3: Line

Course: N89° 59' 12"W Length: 45.00'
North: 711,227.989' East: 225,383.610'

Segment# 4: Line
Course: N0° 00' 48"E Length: 100.00'
North: 711,327.989' East: 225,383.633'

Perimeter: 290.00' Area: 4,500Sq.Ft.
Error Closure: 0.000 Course: N0° 00' 00"E
Error North : 0.0000 East: 0.0000

Precision 1: 290,000,000.00

Parcel Name: PLAT - B09 L03
Description: 3
Process segment order counterclockwise: False
Enable mapcheck across chord: False
North:711,327.979' East:225,428.633'

Segment# 1: Line
Course: S89° 59' 12"E Length: 50.00'
North: 711,327.967' East: 225,478.633'

Segment# 2: Line
Course: S0° 00' 48"W Length: 85.00'
North: 711,242.967' East: 225,478.613'

Segment# 3: Curve
Length: 23.56' Radius: 15.00'
Delta: 90°00'00" Tangent: 15.00'
Chord: 21.21' Course: S45° 00' 49"W
Course In: N89° 59' 11"W Course Out: S0° 00' 49"W
RP North: 711,242.970' East: 225,463.613'
End North: 711,227.970' East: 225,463.610'

Segment# 4: Line
Course: N89° 59' 12"W Length: 35.00'
North: 711,227.979' East: 225,428.610'

Segment# 5: Line
Course: N0° 00' 48"E Length: 100.00'
North: 711,327.979' East: 225,428.633'

Perimeter: 293.56' Area: 4,952Sq.Ft.
Error Closure: 0.000 Course: N44° 59' 11"W
Error North : 0.0001 East: -0.0001

Precision 1: 293,560,000.00

Parcel Name: PLAT - B09 L04

Description: 4
Process segment order counterclockwise: False
Enable mapcheck across chord: False
North:711,396.209' East:225,428.649'

Segment# 1: Line
Course: S89° 59' 12"E Length: 50.00'
North: 711,396.197' East: 225,478.649'

Segment# 2: Line
Course: S0° 00' 48"W Length: 68.23'
North: 711,327.967' East: 225,478.633'

Segment# 3: Line
Course: N89° 59' 12"W Length: 50.00'
North: 711,327.979' East: 225,428.633'

Segment# 4: Line
Course: N89° 59' 12"W Length: 45.00'
North: 711,327.990' East: 225,383.633'

Segment# 5: Line
Course: N89° 59' 12"W Length: 5.00'
North: 711,327.991' East: 225,378.633'

Segment# 6: Line
Course: N0° 00' 48"E Length: 68.23'
North: 711,396.221' East: 225,378.649'

Segment# 7: Line
Course: S89° 59' 12"E Length: 5.00'
North: 711,396.220' East: 225,383.649'

Segment# 8: Line
Course: S89° 59' 12"E Length: 45.00'
North: 711,396.209' East: 225,428.649'

Perimeter: 336.46' Area: 6,823Sq.Ft.
Error Closure: 0.000 Course: N0° 00' 00"E
Error North : 0.0000 East: 0.0000

Precision 1: 336,460,000.00

Parcel Name: PLAT - B09 L05
Description: 5
Process segment order counterclockwise: False
Enable mapcheck across chord: False
North:711,542.201' East:225,463.734'

Segment# 1: Curve

Length: 23.51' Radius: 15.00'
Delta: 89°48'31" Tangent: 14.95'
Chord: 21.18' Course: S44° 53' 26"E
Course In: S0° 12' 18"W Course Out: S89° 59' 10"E
RP North: 711,527.201' East: 225,463.680'
End North: 711,527.197' East: 225,478.680'

Segment# 2: Line
Course: S0° 00' 48"W Length: 131.00'
North: 711,396.197' East: 225,478.649'

Segment# 3: Line
Course: N89° 59' 12"W Length: 50.00'
North: 711,396.209' East: 225,428.649'

Segment# 4: Line
Course: N0° 00' 48"E Length: 99.42'
North: 711,495.629' East: 225,428.673'

Segment# 5: Curve
Length: 40.92' Radius: 63.00'
Delta: 37°12'43" Tangent: 21.21'
Chord: 40.20' Course: N30° 27' 23"E
Course In: N40° 56' 16"W Course Out: S78° 08' 58"E
RP North: 711,543.220' East: 225,387.392'
End North: 711,530.283' East: 225,449.050'

Segment# 6: Curve
Length: 20.46' Radius: 15.00'
Delta: 78°09'50" Tangent: 12.18'
Chord: 18.91' Course: N50° 55' 55"E
Course In: S78° 09' 00"E Course Out: N0° 00' 50"E
RP North: 711,527.203' East: 225,463.730'
End North: 711,542.203' East: 225,463.734'

Perimeter: 365.31' Area: 6,523Sq.Ft.
Error Closure: 0.002 Course: N4° 39' 08"E
Error North : 0.0017 East: 0.0001

Precision 1: 182,655.00

Parcel Name: PLAT - B09 L06
Description: 6
Process segment order counterclockwise: False
Enable mapcheck across chord: False
North:711,396.220' East:225,383.649'

Segment# 1: Line
Course: N0° 00' 48"E Length: 84.11'
North: 711,480.330' East: 225,383.669'

Segment# 2: Curve
Length: 48.74' Radius: 63.00'
Delta: 44°19'34" Tangent: 25.66'
Chord: 47.53' Course: N71° 13' 31"E
Course In: N3° 23' 18"E Course Out: S40° 56' 16"E
RP North: 711,543.220' East: 225,387.392'
End North: 711,495.628' East: 225,428.672'

Segment# 3: Line
Course: S0° 00' 48"W Length: 99.42'
North: 711,396.208' East: 225,428.649'

Segment# 4: Line
Course: N89° 59' 12"W Length: 45.00'
North: 711,396.218' East: 225,383.649'

Perimeter: 277.27' Area: 3,981Sq.Ft.
Error Closure: 0.001 Course: S0° 17' 19"W
Error North : -0.0012 East: 0.0000

Precision 1: 277,270.00

Parcel Name: PLAT - B09 L07
Description: 7
Process segment order counterclockwise: False
Enable mapcheck across chord: False
North:711,396.230' East:225,338.649'

Segment# 1: Line
Course: N0° 00' 48"E Length: 107.04'
North: 711,503.270' East: 225,338.674'

Segment# 2: Curve
Length: 51.97' Radius: 63.00'
Delta: 47°15'47" Tangent: 27.57'
Chord: 50.51' Course: S62° 58' 48"E
Course In: N50° 39' 06"E Course Out: S3° 23' 18"W
RP North: 711,543.214' East: 225,387.392'
End North: 711,480.324' East: 225,383.669'

Segment# 3: Line
Course: S0° 00' 48"W Length: 84.11'
North: 711,396.214' East: 225,383.649'

Segment# 4: Line
Course: N89° 59' 12"W Length: 5.00'
North: 711,396.216' East: 225,378.649'

Segment# 5: Line

Course: N89° 59' 12"W Length: 40.00'
North: 711,396.225' East: 225,338.649'

Perimeter: 288.12' Area: 4,122Sq.Ft.
Error Closure: 0.005 Course: S1° 02' 25"E
Error North : -0.0053 East: 0.0001

Precision 1: 57,624.00

Parcel Name: PLAT - B09 L08
Description: 8
Process segment order counterclockwise: False
Enable mapcheck across chord: False
North:711,606.217' East:225,394.770'

Segment# 1: Line
Course: N89° 59' 12"W Length: 7.36'
North: 711,606.219' East: 225,387.410'

Segment# 2: Curve
Length: 0.00' Radius: 78.82'
Delta: 0°00'01" Tangent: 0.00'
Chord: 0.00' Course: N89° 59' 11"W
Course In: S0° 00' 49"W Course Out: N0° 00' 48"E
RP North: 711,527.399' East: 225,387.391'
End North: 711,606.219' East: 225,387.410'

Segment# 3: Curve
Length: 40.34' Radius: 63.00'
Delta: 36°41'06" Tangent: 20.89'
Chord: 39.65' Course: S71° 40' 15"W
Course In: S0° 00' 48"W Course Out: N36° 40' 18"W
RP North: 711,543.219' East: 225,387.395'
End North: 711,593.749' East: 225,349.770'

Segment# 4: Line
Course: N0° 00' 48"E Length: 112.48'
North: 711,706.229' East: 225,349.796'

Segment# 5: Line
Course: S89° 59' 12"E Length: 45.00'
North: 711,706.219' East: 225,394.796'

Segment# 6: Line
Course: S0° 00' 48"W Length: 100.00'
North: 711,606.219' East: 225,394.772'

Perimeter: 305.18' Area: 4,650Sq.Ft.
Error Closure: 0.003 Course: N55° 01' 45"E
Error North : 0.0017 East: 0.0025

Precision 1: 101,726.67

Parcel Name: PLAT - B09 L09

Description: 9

Process segment order counterclockwise: False

Enable mapcheck across chord: False

North:711,606.206' East:225,439.770'

Segment# 1: Line

Course: N89° 59' 12"W Length: 45.00'

North: 711,606.217' East: 225,394.770'

Segment# 2: Line

Course: N0° 00' 48"E Length: 100.00'

North: 711,706.217' East: 225,394.793'

Segment# 3: Line

Course: S89° 59' 12"E Length: 45.00'

North: 711,706.206' East: 225,439.793'

Segment# 4: Line

Course: S0° 00' 48"W Length: 100.00'

North: 711,606.206' East: 225,439.770'

Perimeter: 290.00' Area: 4,500Sq.Ft.

Error Closure: 0.000 Course: N0° 00' 00"E

Error North : 0.0000 East: 0.0000

Precision 1: 290,000,000.00

Parcel Name: PLAT - B09 L10

Description: 10

Process segment order counterclockwise: False

Enable mapcheck across chord: False

North:711,606.196' East:225,484.770'

Segment# 1: Line

Course: N89° 59' 12"W Length: 45.00'

North: 711,606.206' East: 225,439.770'

Segment# 2: Line

Course: N0° 00' 48"E Length: 100.00'

North: 711,706.206' East: 225,439.793'

Segment# 3: Line

Course: S89° 59' 12"E Length: 45.00'

North: 711,706.196' East: 225,484.793'

Segment# 4: Line

Course: S0° 00' 48"W Length: 100.00'
North: 711,606.196' East: 225,484.770'

Perimeter: 290.00' Area: 4,500Sq.Ft.
Error Closure: 0.000 Course: N0° 00' 00"E
Error North : 0.0000 East: 0.0000

Precision 1: 290,000,000.00

Parcel Name: PLAT - B09 L11
Description: 11
Process segment order counterclockwise: False
Enable mapcheck across chord: False
North:711,606.185' East:225,529.770'

Segment# 1: Line
Course: N89° 59' 12"W Length: 45.00'
North: 711,606.196' East: 225,484.770'

Segment# 2: Line
Course: N0° 00' 48"E Length: 100.00'
North: 711,706.196' East: 225,484.793'

Segment# 3: Line
Course: S89° 59' 12"E Length: 45.00'
North: 711,706.185' East: 225,529.793'

Segment# 4: Line
Course: S0° 00' 48"W Length: 100.00'
North: 711,606.185' East: 225,529.770'

Perimeter: 290.00' Area: 4,500Sq.Ft.
Error Closure: 0.000 Course: N0° 00' 00"E
Error North : 0.0000 East: 0.0000

Precision 1: 290,000,000.00

Parcel Name: PLAT - B09 L12
Description: 12
Process segment order counterclockwise: False
Enable mapcheck across chord: False
North:711,606.175' East:225,574.770'

Segment# 1: Line
Course: N89° 59' 12"W Length: 45.00'
North: 711,606.185' East: 225,529.770'

Segment# 2: Line
Course: N0° 00' 48"E Length: 100.00'
North: 711,706.185' East: 225,529.793'

Segment# 3: Line
Course: S89° 59' 12"E Length: 45.00'
North: 711,706.175' East: 225,574.793'

Segment# 4: Line
Course: S0° 00' 48"W Length: 100.00'
North: 711,606.175' East: 225,574.770'

Perimeter: 290.00' Area: 4,500Sq.Ft.
Error Closure: 0.000 Course: N0° 00' 00"E
Error North : 0.0000 East: 0.0000

Precision 1: 290,000,000.00

Parcel Name: PLAT - B09 L13
Description: 13
Process segment order counterclockwise: False
Enable mapcheck across chord: False
North:711,606.164' East:225,619.770'

Segment# 1: Line
Course: N89° 59' 12"W Length: 45.00'
North: 711,606.175' East: 225,574.770'

Segment# 2: Line
Course: N0° 00' 48"E Length: 100.00'
North: 711,706.175' East: 225,574.793'

Segment# 3: Line
Course: S89° 59' 12"E Length: 45.00'
North: 711,706.164' East: 225,619.793'

Segment# 4: Line
Course: S0° 00' 48"W Length: 100.00'
North: 711,606.164' East: 225,619.770'

Perimeter: 290.00' Area: 4,500Sq.Ft.
Error Closure: 0.000 Course: N0° 00' 00"E
Error North : 0.0000 East: 0.0000

Precision 1: 290,000,000.00

Parcel Name: PLAT - B09 L14
Description: 14
Process segment order counterclockwise: False
Enable mapcheck across chord: False
North:711,606.154' East:225,664.770'

Segment# 1: Line

Course: N89° 59' 12"W Length: 45.00'
North: 711,606.164' East: 225,619.770'

Segment# 2: Line
Course: N0° 00' 48"E Length: 100.00'
North: 711,706.164' East: 225,619.793'

Segment# 3: Line
Course: S89° 59' 12"E Length: 45.00'
North: 711,706.154' East: 225,664.793'

Segment# 4: Line
Course: S0° 00' 48"W Length: 100.00'
North: 711,606.154' East: 225,664.770'

Perimeter: 290.00' Area: 4,500Sq.Ft.
Error Closure: 0.000 Course: N0° 00' 00"E
Error North : 0.0000 East: 0.0000

Precision 1: 290,000,000.00

Parcel Name: PLAT - B09 L15
Description: 15
Process segment order counterclockwise: False
Enable mapcheck across chord: False
North:711,606.143' East:225,709.770'

Segment# 1: Line
Course: N89° 59' 12"W Length: 45.00'
North: 711,606.153' East: 225,664.770'

Segment# 2: Line
Course: N0° 00' 48"E Length: 100.00'
North: 711,706.153' East: 225,664.793'

Segment# 3: Line
Course: S89° 59' 12"E Length: 45.00'
North: 711,706.143' East: 225,709.793'

Segment# 4: Line
Course: S0° 00' 48"W Length: 100.00'
North: 711,606.143' East: 225,709.770'

Perimeter: 290.00' Area: 4,500Sq.Ft.
Error Closure: 0.000 Course: N0° 00' 00"E
Error North : 0.0000 East: 0.0000

Precision 1: 290,000,000.00

Parcel Name: PLAT - B09 L16

Description: 16
Process segment order counterclockwise: False
Enable mapcheck across chord: False
North:711,606.132' East:225,754.770'

Segment# 1: Line
Course: N89° 59' 12"W Length: 45.00'
North: 711,606.143' East: 225,709.770'

Segment# 2: Line
Course: N0° 00' 48"E Length: 100.00'
North: 711,706.143' East: 225,709.793'

Segment# 3: Line
Course: S89° 59' 12"E Length: 45.00'
North: 711,706.132' East: 225,754.793'

Segment# 4: Line
Course: S0° 00' 48"W Length: 100.00'
North: 711,606.132' East: 225,754.770'

Perimeter: 290.00' Area: 4,500Sq.Ft.
Error Closure: 0.000 Course: N0° 00' 00"E
Error North : 0.0000 East: 0.0000

Precision 1: 290,000,000.00

Parcel Name: PLAT - B09 L17
Description: 17
Process segment order counterclockwise: False
Enable mapcheck across chord: False
North:711,606.122' East:225,799.770'

Segment# 1: Line
Course: N89° 59' 12"W Length: 45.00'
North: 711,606.132' East: 225,754.770'

Segment# 2: Line
Course: N0° 00' 48"E Length: 100.00'
North: 711,706.132' East: 225,754.793'

Segment# 3: Line
Course: S89° 59' 12"E Length: 45.00'
North: 711,706.122' East: 225,799.793'

Segment# 4: Line
Course: S0° 00' 48"W Length: 100.00'
North: 711,606.122' East: 225,799.770'

Perimeter: 290.00' Area: 4,500Sq.Ft.

Error Closure: 0.000 Course: N0° 00' 00"E
Error North : 0.0000 East: 0.0000

Precision 1: 290,000,000.00

Parcel Name: PLAT - B09 L18
Description: 18
Process segment order counterclockwise: False
Enable mapcheck across chord: False
North: 711,606.114' East: 225,834.770'

Segment# 1: Line
Course: N89° 59' 12"W Length: 35.00'
North: 711,606.122' East: 225,799.770'

Segment# 2: Line
Course: N0° 00' 48"E Length: 100.00'
North: 711,706.122' East: 225,799.793'

Segment# 3: Line
Course: S89° 59' 12"E Length: 50.00'
North: 711,706.110' East: 225,849.793'

Segment# 4: Line
Course: S0° 00' 48"W Length: 85.00'
North: 711,621.110' East: 225,849.773'

Segment# 5: Curve
Length: 23.56' Radius: 15.00'
Delta: 90°00'00" Tangent: 15.00'
Chord: 21.21' Course: S45° 00' 48"W
Course In: N89° 59' 12"W Course Out: S0° 00' 48"W
RP North: 711,621.114' East: 225,834.773'
End North: 711,606.114' East: 225,834.770'

Perimeter: 293.56' Area: 4,952Sq.Ft.
Error Closure: 0.000 Course: N0° 00' 00"E
Error North : 0.0000 East: 0.0000

Precision 1: 293,560,000.00

Parcel Name: PLAT - B10 L01
Description: 1
Process segment order counterclockwise: False
Enable mapcheck across chord: False
North: 711,489.787' East: 225,642.671'

Segment# 1: Line
Course: N89° 59' 12"W Length: 100.00'
North: 711,489.810' East: 225,542.671'

Segment# 2: Line
Course: N0° 00' 48"E Length: 37.37'
North: 711,527.180' East: 225,542.680'

Segment# 3: Curve
Length: 23.56' Radius: 15.00'
Delta: 90°00'00" Tangent: 15.00'
Chord: 21.21' Course: N45° 00' 48"E
Course In: S89° 59' 12"E Course Out: N0° 00' 48"E
RP North: 711,527.177' East: 225,557.680'
End North: 711,542.177' East: 225,557.683'

Segment# 4: Line
Course: S89° 59' 12"E Length: 85.00'
North: 711,542.157' East: 225,642.683'

Segment# 5: Line
Course: S0° 00' 48"W Length: 52.37'
North: 711,489.787' East: 225,642.671'

Perimeter: 298.31' Area: 5,189Sq.Ft.
Error Closure: 0.000 Course: N0° 00' 00"E
Error North : 0.0000 East: 0.0000

Precision 1: 298,300,000.00

Parcel Name: PLAT - B10 L02
Description: 2
Process segment order counterclockwise: False
Enable mapcheck across chord: False
North:711,489.811' East:225,542.671'

Segment# 1: Line
Course: S89° 59' 12"E Length: 100.00'
North: 711,489.787' East: 225,642.671'

Segment# 2: Line
Course: S0° 00' 48"W Length: 52.37'
North: 711,437.417' East: 225,642.659'

Segment# 3: Line
Course: N89° 59' 12"W Length: 100.00'
North: 711,437.441' East: 225,542.659'

Segment# 4: Line
Course: N0° 00' 48"E Length: 52.37'
North: 711,489.811' East: 225,542.671'

Perimeter: 304.74' Area: 5,237Sq.Ft.

Error Closure: 0.000 Course: N0° 00' 00"E
Error North : 0.0000 East: 0.0000

Precision 1: 304,740,000.00

Parcel Name: PLAT - B10 L03
Description: 3
Process segment order counterclockwise: False
Enable mapcheck across chord: False
North:711,385.067' East:225,542.646'

Segment# 1: Line
Course: N0° 00' 48"E Length: 52.37'
North: 711,437.437' East: 225,542.659'

Segment# 2: Line
Course: S89° 59' 12"E Length: 100.00'
North: 711,437.414' East: 225,642.659'

Segment# 3: Line
Course: S0° 00' 48"W Length: 52.37'
North: 711,385.044' East: 225,642.646'

Segment# 4: Line
Course: N89° 59' 12"W Length: 100.00'
North: 711,385.067' East: 225,542.646'

Perimeter: 304.74' Area: 5,237Sq.Ft.
Error Closure: 0.000 Course: N0° 00' 00"E
Error North : 0.0000 East: 0.0000

Precision 1: 304,740,000.00

Parcel Name: PLAT - B10 L04
Description: 4
Process segment order counterclockwise: False
Enable mapcheck across chord: False
North:711,332.695' East:225,542.634'

Segment# 1: Line
Course: N0° 00' 48"E Length: 52.37'
North: 711,385.065' East: 225,542.646'

Segment# 2: Line
Course: S89° 59' 12"E Length: 100.00'
North: 711,385.042' East: 225,642.646'

Segment# 3: Line
Course: S0° 00' 48"W Length: 52.37'
North: 711,332.672' East: 225,642.634'

Segment# 4: Line
Course: N89° 59' 12"W Length: 100.00'
North: 711,332.695' East: 225,542.634'

Perimeter: 304.74' Area: 5,237Sq.Ft.
Error Closure: 0.000 Course: N0° 00' 00"E
Error North : 0.0000 East: 0.0000

Precision 1: 304,740,000.00

Parcel Name: PLAT - B10 L05
Description: 5
Process segment order counterclockwise: False
Enable mapcheck across chord: False
North:711,280.324' East:225,542.622'

Segment# 1: Line
Course: N0° 00' 48"E Length: 52.37'
North: 711,332.694' East: 225,542.634'

Segment# 2: Line
Course: S89° 59' 12"E Length: 100.00'
North: 711,332.670' East: 225,642.634'

Segment# 3: Line
Course: S0° 00' 48"W Length: 52.37'
North: 711,280.300' East: 225,642.622'

Segment# 4: Line
Course: N89° 59' 12"W Length: 100.00'
North: 711,280.324' East: 225,542.622'

Perimeter: 304.74' Area: 5,237Sq.Ft.
Error Closure: 0.000 Course: N0° 00' 00"E
Error North : 0.0000 East: 0.0000

Precision 1: 304,740,000.00

Parcel Name: PLAT - B10 L06
Description: 6
Process segment order counterclockwise: False
Enable mapcheck across chord: False
North:711,227.948' East:225,557.610'

Segment# 1: Curve
Length: 23.56' Radius: 15.00'
Delta: 90°00'00" Tangent: 15.00'
Chord: 21.21' Course: N44° 59' 12"W
Course In: N0° 00' 48"E Course Out: N89° 59' 12"W

RP North: 711,242.948' East: 225,557.613'
End North: 711,242.952' East: 225,542.613'

Segment# 2: Line
Course: N0° 00' 48"E Length: 37.37'
North: 711,280.322' East: 225,542.622'

Segment# 3: Line
Course: S89° 59' 12"E Length: 100.00'
North: 711,280.298' East: 225,642.622'

Segment# 4: Line
Course: S0° 00' 48"W Length: 52.37'
North: 711,227.928' East: 225,642.610'

Segment# 5: Line
Course: N89° 59' 12"W Length: 85.00'
North: 711,227.948' East: 225,557.610'

Perimeter: 298.31' Area: 5,189Sq.Ft.
Error Closure: 0.000 Course: N0° 00' 00"E
Error North : 0.0000 East: 0.0000

Precision 1: 298,300,000.00

Parcel Name: PLAT - B10 L07
Description: 7
Process segment order counterclockwise: False
Enable mapcheck across chord: False
North:711,227.928' East:225,642.610'

Segment# 1: Line
Course: N0° 00' 48"E Length: 52.37'
North: 711,280.298' East: 225,642.622'

Segment# 2: Line
Course: S89° 59' 12"E Length: 100.00'
North: 711,280.275' East: 225,742.622'

Segment# 3: Line
Course: S0° 00' 48"W Length: 37.37'
North: 711,242.905' East: 225,742.613'

Segment# 4: Curve
Length: 23.56' Radius: 15.00'
Delta: 90°00'00" Tangent: 15.00'
Chord: 21.21' Course: S45° 00' 48"W
Course In: N89° 59' 12"W Course Out: S0° 00' 48"W
RP North: 711,242.909' East: 225,727.613'
End North: 711,227.909' East: 225,727.610'

Segment# 5: Line
Course: N89° 59' 12"W Length: 85.00'
North: 711,227.928' East: 225,642.610'

Perimeter: 298.31' Area: 5,189Sq.Ft.
Error Closure: 0.000 Course: N0° 00' 00"E
Error North : 0.0000 East: 0.0000

Precision 1: 298,300,000.00

Parcel Name: PLAT - B10 L08
Description: 8
Process segment order counterclockwise: False
Enable mapcheck across chord: False
North:711,280.300' East:225,642.622'

Segment# 1: Line
Course: N0° 00' 48"E Length: 52.37'
North: 711,332.670' East: 225,642.634'

Segment# 2: Line
Course: S89° 59' 12"E Length: 100.00'
North: 711,332.647' East: 225,742.634'

Segment# 3: Line
Course: S0° 00' 48"W Length: 52.37'
North: 711,280.277' East: 225,742.622'

Segment# 4: Line
Course: N89° 59' 12"W Length: 100.00'
North: 711,280.300' East: 225,642.622'

Perimeter: 304.74' Area: 5,237Sq.Ft.
Error Closure: 0.000 Course: N0° 00' 00"E
Error North : 0.0000 East: 0.0000

Precision 1: 304,740,000.00

Parcel Name: PLAT - B10 L09
Description: 9
Process segment order counterclockwise: False
Enable mapcheck across chord: False
North:711,332.672' East:225,642.634'

Segment# 1: Line
Course: N0° 00' 48"E Length: 52.37'
North: 711,385.042' East: 225,642.646'

Segment# 2: Line

Course: S89° 59' 12"E Length: 100.00'
North: 711,385.019' East: 225,742.646'

Segment# 3: Line
Course: S0° 00' 48"W Length: 52.37'
North: 711,332.649' East: 225,742.634'

Segment# 4: Line
Course: N89° 59' 12"W Length: 100.00'
North: 711,332.672' East: 225,642.634'

Perimeter: 304.74' Area: 5,237Sq.Ft.
Error Closure: 0.000 Course: N0° 00' 00"E
Error North : 0.0000 East: 0.0000

Precision 1: 304,740,000.00

Parcel Name: PLAT - B10 L10
Description: 10
Process segment order counterclockwise: False
Enable mapcheck across chord: False
North:711,385.044' East:225,642.647'

Segment# 1: Line
Course: N0° 00' 48"E Length: 52.37'
North: 711,437.414' East: 225,642.659'

Segment# 2: Line
Course: S89° 59' 12"E Length: 100.00'
North: 711,437.390' East: 225,742.659'

Segment# 3: Line
Course: S0° 00' 48"W Length: 52.37'
North: 711,385.020' East: 225,742.646'

Segment# 4: Line
Course: N89° 59' 12"W Length: 100.00'
North: 711,385.044' East: 225,642.647'

Perimeter: 304.74' Area: 5,237Sq.Ft.
Error Closure: 0.000 Course: N0° 00' 00"E
Error North : 0.0000 East: 0.0000

Precision 1: 304,740,000.00

Parcel Name: PLAT - B10 L11
Description: 11
Process segment order counterclockwise: False
Enable mapcheck across chord: False
North:711,489.787' East:225,642.671'

Segment# 1: Line
Course: S89° 59' 12"E Length: 100.00'
North: 711,489.764' East: 225,742.671'

Segment# 2: Line
Course: S0° 00' 48"W Length: 52.37'
North: 711,437.394' East: 225,742.659'

Segment# 3: Line
Course: N89° 59' 12"W Length: 100.00'
North: 711,437.417' East: 225,642.659'

Segment# 4: Line
Course: N0° 00' 48"E Length: 52.37'
North: 711,489.787' East: 225,642.671'

Perimeter: 304.74' Area: 5,237Sq.Ft.
Error Closure: 0.000 Course: N0° 00' 00"E
Error North : 0.0000 East: 0.0000

Precision 1: 304,740,000.00

Parcel Name: PLAT - B10 L12
Description: 12
Process segment order counterclockwise: False
Enable mapcheck across chord: False
North:711,489.764' East:225,742.671'

Segment# 1: Line
Course: N89° 59' 12"W Length: 100.00'
North: 711,489.787' East: 225,642.671'

Segment# 2: Line
Course: N0° 00' 48"E Length: 52.37'
North: 711,542.157' East: 225,642.683'

Segment# 3: Line
Course: S89° 59' 12"E Length: 85.00'
North: 711,542.137' East: 225,727.683'

Segment# 4: Curve
Length: 23.56' Radius: 15.00'
Delta: 90°00'00" Tangent: 15.00'
Chord: 21.21' Course: S44° 59' 12"E
Course In: S0° 00' 48"W Course Out: S89° 59' 12"E
RP North: 711,527.137' East: 225,727.680'
End North: 711,527.134' East: 225,742.680'

Segment# 5: Line

Course: S0° 00' 48"W Length: 37.37'
North: 711,489.764' East: 225,742.671'

Perimeter: 298.31' Area: 5,189Sq.Ft.
Error Closure: 0.000 Course: N0° 00' 00"E
Error North : 0.0000 East: 0.0000

Precision 1: 298,300,000.00

Parcel Name: PLAT - B11 L01
Description: 1
Process segment order counterclockwise: False
Enable mapcheck across chord: False
North:711,063.980' East:225,422.571'

Segment# 1: Line
Course: N0° 00' 48"E Length: 100.00'
North: 711,163.980' East: 225,422.594'

Segment# 2: Line
Course: S89° 59' 12"E Length: 45.00'
North: 711,163.970' East: 225,467.594'

Segment# 3: Line
Course: S0° 00' 48"W Length: 100.00'
North: 711,063.970' East: 225,467.571'

Segment# 4: Line
Course: N89° 59' 12"W Length: 45.00'
North: 711,063.980' East: 225,422.571'

Perimeter: 290.00' Area: 4,500Sq.Ft.
Error Closure: 0.000 Course: N0° 00' 00"E
Error North : 0.0000 East: 0.0000

Precision 1: 290,000,000.00

Parcel Name: PLAT - B11 L02
Description: 2
Process segment order counterclockwise: False
Enable mapcheck across chord: False
North:711,063.959' East:225,512.571'

Segment# 1: Line
Course: N89° 59' 12"W Length: 45.00'
North: 711,063.969' East: 225,467.571'

Segment# 2: Line
Course: N0° 00' 48"E Length: 100.00'
North: 711,163.969' East: 225,467.594'

Segment# 3: Line
Course: S89° 59' 12"E Length: 45.00'
North: 711,163.959' East: 225,512.594'

Segment# 4: Line
Course: S0° 00' 48"W Length: 100.00'
North: 711,063.959' East: 225,512.571'

Perimeter: 290.00' Area: 4,500Sq.Ft.
Error Closure: 0.000 Course: N0° 00' 00"E
Error North : 0.0000 East: 0.0000

Precision 1: 290,000,000.00

Parcel Name: PLAT - B11 L03
Description: 3
Process segment order counterclockwise: False
Enable mapcheck across chord: False
North:711,063.948' East:225,557.571'

Segment# 1: Line
Course: N89° 59' 12"W Length: 45.00'
North: 711,063.959' East: 225,512.571'

Segment# 2: Line
Course: N0° 00' 48"E Length: 100.00'
North: 711,163.959' East: 225,512.594'

Segment# 3: Line
Course: S89° 59' 12"E Length: 45.00'
North: 711,163.948' East: 225,557.594'

Segment# 4: Line
Course: S0° 00' 48"W Length: 100.00'
North: 711,063.948' East: 225,557.571'

Perimeter: 290.00' Area: 4,500Sq.Ft.
Error Closure: 0.000 Course: N0° 00' 00"E
Error North : 0.0000 East: 0.0000

Precision 1: 290,000,000.00

Parcel Name: PLAT - B11 L04
Description: 4
Process segment order counterclockwise: False
Enable mapcheck across chord: False
North:711,063.938' East:225,602.571'

Segment# 1: Line

Course: N89° 59' 12"W Length: 45.00'
North: 711,063.948' East: 225,557.571'

Segment# 2: Line
Course: N0° 00' 48"E Length: 100.00'
North: 711,163.948' East: 225,557.594'

Segment# 3: Line
Course: S89° 59' 12"E Length: 45.00'
North: 711,163.938' East: 225,602.594'

Segment# 4: Line
Course: S0° 00' 48"W Length: 100.00'
North: 711,063.938' East: 225,602.571'

Perimeter: 290.00' Area: 4,500Sq.Ft.
Error Closure: 0.000 Course: N0° 00' 00"E
Error North : 0.0000 East: 0.0000

Precision 1: 290,000,000.00

Parcel Name: PLAT - B11 L05
Description: 5
Process segment order counterclockwise: False
Enable mapcheck across chord: False
North:711,063.927' East:225,647.571'

Segment# 1: Line
Course: N89° 59' 12"W Length: 45.00'
North: 711,063.938' East: 225,602.571'

Segment# 2: Line
Course: N0° 00' 48"E Length: 100.00'
North: 711,163.938' East: 225,602.594'

Segment# 3: Line
Course: S89° 59' 12"E Length: 45.00'
North: 711,163.927' East: 225,647.594'

Segment# 4: Line
Course: S0° 00' 48"W Length: 100.00'
North: 711,063.927' East: 225,647.571'

Perimeter: 290.00' Area: 4,500Sq.Ft.
Error Closure: 0.000 Course: N0° 00' 00"E
Error North : 0.0000 East: 0.0000

Precision 1: 290,000,000.00

Parcel Name: PLAT - B11 L06

Description: 6
Process segment order counterclockwise: False
Enable mapcheck across chord: False
North:711,063.917' East:225,692.571'

Segment# 1: Line
Course: N89° 59' 12"W Length: 45.00'
North: 711,063.927' East: 225,647.571'

Segment# 2: Line
Course: N0° 00' 48"E Length: 100.00'
North: 711,163.927' East: 225,647.594'

Segment# 3: Line
Course: S89° 59' 12"E Length: 45.00'
North: 711,163.917' East: 225,692.594'

Segment# 4: Line
Course: S0° 00' 48"W Length: 100.00'
North: 711,063.917' East: 225,692.571'

Perimeter: 290.00' Area: 4,500Sq.Ft.
Error Closure: 0.000 Course: N0° 00' 00"E
Error North : 0.0000 East: 0.0000

Precision 1: 290,000,000.00

Parcel Name: PLAT - B11 L07
Description: 7
Process segment order counterclockwise: False
Enable mapcheck across chord: False
North:711,063.905' East:225,742.571'

Segment# 1: Line
Course: N89° 59' 12"W Length: 50.00'
North: 711,063.916' East: 225,692.571'

Segment# 2: Line
Course: N0° 00' 48"E Length: 100.00'
North: 711,163.916' East: 225,692.594'

Segment# 3: Line
Course: S89° 59' 12"E Length: 35.00'
North: 711,163.908' East: 225,727.594'

Segment# 4: Curve
Length: 23.56' Radius: 15.00'
Delta: 90°00'00" Tangent: 15.00'
Chord: 21.21' Course: S44° 59' 12"E
Course In: S0° 00' 48"W Course Out: S89° 59' 12"E

RP North: 711,148.908' East: 225,727.591'
End North: 711,148.905' East: 225,742.591'

Segment# 5: Line

Course: S0° 00' 49"W Length: 85.00'
North: 711,063.905' East: 225,742.570'

Perimeter: 293.56' Area: 4,952Sq.Ft.
Error Closure: 0.000 Course: N89° 59' 11"W
Error North : 0.0000 East: -0.0004

Precision 1: 293,560,000.00

Parcel Name: PLAT - B11 L08

Description: 8

Process segment order counterclockwise: False

Enable mapcheck across chord: False

North:710,963.908' East:225,727.547'

Segment# 1: Line

Course: N89° 59' 12"W Length: 35.00'
North: 710,963.916' East: 225,692.547'

Segment# 2: Line

Course: N0° 00' 48"E Length: 100.00'
North: 711,063.916' East: 225,692.571'

Segment# 3: Line

Course: S89° 59' 12"E Length: 50.00'
North: 711,063.905' East: 225,742.571'

Segment# 4: Line

Course: S0° 00' 49"W Length: 85.00'
North: 710,978.905' East: 225,742.550'

Segment# 5: Curve

Length: 23.56' Radius: 15.00'
Delta: 90°00'00" Tangent: 15.00'
Chord: 21.21' Course: S45° 00' 48"W
Course In: N89° 59' 12"W Course Out: S0° 00' 48"W
RP North: 710,978.908' East: 225,727.550'
End North: 710,963.908' East: 225,727.547'

Perimeter: 293.56' Area: 4,952Sq.Ft.
Error Closure: 0.000 Course: N89° 59' 11"W
Error North : 0.0000 East: -0.0004

Precision 1: 293,560,000.00

Parcel Name: PLAT - B11 L09

Description: 9
Process segment order counterclockwise: False
Enable mapcheck across chord: False
North:710,963.917' East:225,692.547'

Segment# 1: Line
Course: N89° 59' 12"W Length: 45.00'
North: 710,963.927' East: 225,647.547'

Segment# 2: Line
Course: N0° 00' 48"E Length: 100.00'
North: 711,063.927' East: 225,647.571'

Segment# 3: Line
Course: S89° 59' 12"E Length: 45.00'
North: 711,063.917' East: 225,692.571'

Segment# 4: Line
Course: S0° 00' 48"W Length: 100.00'
North: 710,963.917' East: 225,692.547'

Perimeter: 290.00' Area: 4,500Sq.Ft.
Error Closure: 0.000 Course: N0° 00' 00"E
Error North : 0.0000 East: 0.0000

Precision 1: 290,000,000.00

Parcel Name: PLAT - B11 L10
Description: 10
Process segment order counterclockwise: False
Enable mapcheck across chord: False
North:710,963.927' East:225,647.547'

Segment# 1: Line
Course: N89° 59' 12"W Length: 45.00'
North: 710,963.938' East: 225,602.548'

Segment# 2: Line
Course: N0° 00' 48"E Length: 100.00'
North: 711,063.938' East: 225,602.571'

Segment# 3: Line
Course: S89° 59' 12"E Length: 45.00'
North: 711,063.927' East: 225,647.571'

Segment# 4: Line
Course: S0° 00' 48"W Length: 100.00'
North: 710,963.927' East: 225,647.547'

Perimeter: 290.00' Area: 4,500Sq.Ft.

Error Closure: 0.000 Course: N0° 00' 00"E
Error North : 0.0000 East: 0.0000

Precision 1: 290,000,000.00

Parcel Name: PLAT - B11 L11
Description: 11
Process segment order counterclockwise: False
Enable mapcheck across chord: False
North:710,963.938' East:225,602.548'

Segment# 1: Line
Course: N89° 59' 12"W Length: 45.00'
North: 710,963.948' East: 225,557.548'

Segment# 2: Line
Course: N0° 00' 48"E Length: 100.00'
North: 711,063.948' East: 225,557.571'

Segment# 3: Line
Course: S89° 59' 12"E Length: 45.00'
North: 711,063.938' East: 225,602.571'

Segment# 4: Line
Course: S0° 00' 48"W Length: 100.00'
North: 710,963.938' East: 225,602.548'

Perimeter: 290.00' Area: 4,500Sq.Ft.
Error Closure: 0.000 Course: N0° 00' 00"E
Error North : 0.0000 East: 0.0000

Precision 1: 290,000,000.00

Parcel Name: PLAT - B11 L12
Description: 12
Process segment order counterclockwise: False
Enable mapcheck across chord: False
North:710,963.948' East:225,557.548'

Segment# 1: Line
Course: N89° 59' 12"W Length: 45.00'
North: 710,963.959' East: 225,512.548'

Segment# 2: Line
Course: N0° 00' 48"E Length: 100.00'
North: 711,063.959' East: 225,512.571'

Segment# 3: Line
Course: S89° 59' 12"E Length: 45.00'
North: 711,063.948' East: 225,557.571'

Segment# 4: Line
Course: S0° 00' 48"W Length: 100.00'
North: 710,963.948' East: 225,557.548'

Perimeter: 290.00' Area: 4,500Sq.Ft.
Error Closure: 0.000 Course: N0° 00' 00"E
Error North : 0.0000 East: 0.0000

Precision 1: 290,000,000.00

Parcel Name: PLAT - B11 L13
Description: 13
Process segment order counterclockwise: False
Enable mapcheck across chord: False
North:710,963.959' East:225,512.548'

Segment# 1: Line
Course: N89° 59' 12"W Length: 45.00'
North: 710,963.969' East: 225,467.548'

Segment# 2: Line
Course: N0° 00' 48"E Length: 100.00'
North: 711,063.969' East: 225,467.571'

Segment# 3: Line
Course: S89° 59' 12"E Length: 45.00'
North: 711,063.959' East: 225,512.571'

Segment# 4: Line
Course: S0° 00' 48"W Length: 100.00'
North: 710,963.959' East: 225,512.548'

Perimeter: 290.00' Area: 4,500Sq.Ft.
Error Closure: 0.000 Course: N0° 00' 00"E
Error North : 0.0000 East: 0.0000

Precision 1: 290,000,000.00

Parcel Name: PLAT - B11 L14
Description: 14
Process segment order counterclockwise: False
Enable mapcheck across chord: False
North:710,963.969' East:225,467.548'

Segment# 1: Line
Course: N89° 59' 12"W Length: 45.00'
North: 710,963.980' East: 225,422.548'

Segment# 2: Line

Course: N0° 00' 48"E Length: 100.00'
North: 711,063.980' East: 225,422.571'

Segment# 3: Line
Course: S89° 59' 12"E Length: 45.00'
North: 711,063.969' East: 225,467.571'

Segment# 4: Line
Course: S0° 00' 48"W Length: 100.00'
North: 710,963.969' East: 225,467.548'

Perimeter: 290.00' Area: 4,500Sq.Ft.
Error Closure: 0.000 Course: N0° 00' 00"E
Error North : 0.0000 East: 0.0000

Precision 1: 290,000,000.00

Parcel Name: PLAT - B11 L15
Description: 15
Process segment order counterclockwise: False
Enable mapcheck across chord: False
North:710,963.980' East:225,422.548'

Segment# 1: Line
Course: N89° 59' 12"W Length: 45.00'
North: 710,963.990' East: 225,377.548'

Segment# 2: Line
Course: N0° 00' 48"E Length: 100.00'
North: 711,063.990' East: 225,377.571'

Segment# 3: Line
Course: S89° 59' 12"E Length: 45.00'
North: 711,063.980' East: 225,422.571'

Segment# 4: Line
Course: S0° 00' 48"W Length: 100.00'
North: 710,963.980' East: 225,422.548'

Perimeter: 290.00' Area: 4,500Sq.Ft.
Error Closure: 0.000 Course: N0° 00' 00"E
Error North : 0.0000 East: 0.0000

Precision 1: 290,000,000.00

Parcel Name: PLAT - B11 L16
Description: 16
Process segment order counterclockwise: False
Enable mapcheck across chord: False
North:710,963.991' East:225,377.548'

Segment# 1: Line
Course: N89° 59' 12"W Length: 45.00'
North: 710,964.001' East: 225,332.548'

Segment# 2: Line
Course: N0° 00' 48"E Length: 100.00'
North: 711,064.001' East: 225,332.571'

Segment# 3: Line
Course: S89° 59' 12"E Length: 45.00'
North: 711,063.991' East: 225,377.571'

Segment# 4: Line
Course: S0° 00' 48"W Length: 100.00'
North: 710,963.991' East: 225,377.548'

Perimeter: 290.00' Area: 4,500Sq.Ft.
Error Closure: 0.000 Course: N0° 00' 00"E
Error North : 0.0000 East: 0.0000

Precision 1: 290,000,000.00

Parcel Name: PLAT - B12 L01
Description: 1
Process segment order counterclockwise: False
Enable mapcheck across chord: False
North:711,477.981' East:225,906.668'

Segment# 1: Line
Course: N89° 59' 12"W Length: 100.00'
North: 711,478.005' East: 225,806.668'

Segment# 2: Line
Course: N0° 00' 48"E Length: 49.12'
North: 711,527.125' East: 225,806.680'

Segment# 3: Curve
Length: 23.56' Radius: 15.00'
Delta: 90°00'00" Tangent: 15.00'
Chord: 21.21' Course: N45° 00' 48"E
Course In: S89° 59' 12"E Course Out: N0° 00' 48"E
RP North: 711,527.121' East: 225,821.680'
End North: 711,542.121' East: 225,821.683'

Segment# 4: Line
Course: S89° 59' 12"E Length: 85.00'
North: 711,542.101' East: 225,906.683'

Segment# 5: Line

Course: S0° 00' 48"W Length: 23.23'
North: 711,518.871' East: 225,906.678'

Segment# 6: Line
Course: S0° 00' 48"W Length: 40.88'
North: 711,477.991' East: 225,906.668'

Perimeter: 321.79' Area: 6,363Sq.Ft.
Error Closure: 0.010 Course: N0° 00' 48"E
Error North : 0.0100 East: 0.0000

Precision 1: 32,179.00

Parcel Name: PLAT - B12 L02
Description: 2
Process segment order counterclockwise: False
Enable mapcheck across chord: False
North:711,432.981' East:225,906.658'

Segment# 1: Line
Course: N89° 59' 12"W Length: 100.00'
North: 711,433.005' East: 225,806.658'

Segment# 2: Line
Course: N0° 00' 48"E Length: 45.00'
North: 711,478.005' East: 225,806.668'

Segment# 3: Line
Course: S89° 59' 12"E Length: 100.00'
North: 711,477.981' East: 225,906.668'

Segment# 4: Line
Course: S0° 00' 48"W Length: 9.12'
North: 711,468.861' East: 225,906.666'

Segment# 5: Line
Course: S0° 00' 48"W Length: 35.88'
North: 711,432.981' East: 225,906.658'

Perimeter: 290.00' Area: 4,500Sq.Ft.
Error Closure: 0.000 Course: S0° 00' 00"E
Error North : 0.0000 East: 0.0000

Precision 1: 290,000,000.00

Parcel Name: PLAT - B12 L03
Description: 3
Process segment order counterclockwise: False
Enable mapcheck across chord: False
North:711,387.981' East:225,906.647'

Segment# 1: Line
Course: N89° 59' 12"W Length: 100.00'
North: 711,388.005' East: 225,806.647'

Segment# 2: Line
Course: N0° 00' 48"E Length: 45.00'
North: 711,433.005' East: 225,806.658'

Segment# 3: Line
Course: S89° 59' 12"E Length: 100.00'
North: 711,432.981' East: 225,906.658'

Segment# 4: Line
Course: S0° 00' 48"W Length: 14.12'
North: 711,418.861' East: 225,906.654'

Segment# 5: Line
Course: S0° 00' 48"W Length: 30.88'
North: 711,387.981' East: 225,906.647'

Perimeter: 290.00' Area: 4,500Sq.Ft.
Error Closure: 0.000 Course: S0° 00' 00"E
Error North : 0.0000 East: 0.0000

Precision 1: 290,000,000.00

Parcel Name: PLAT - B12 L04
Description: 4
Process segment order counterclockwise: False
Enable mapcheck across chord: False
North:711,342.981' East:225,906.637'

Segment# 1: Line
Course: N89° 59' 12"W Length: 100.00'
North: 711,343.005' East: 225,806.637'

Segment# 2: Line
Course: N0° 00' 48"E Length: 45.00'
North: 711,388.005' East: 225,806.647'

Segment# 3: Line
Course: S89° 59' 12"E Length: 100.00'
North: 711,387.981' East: 225,906.647'

Segment# 4: Line
Course: S0° 00' 48"W Length: 19.12'
North: 711,368.861' East: 225,906.643'

Segment# 5: Line

Course: S0° 00' 48"W Length: 25.88'
North: 711,342.981' East: 225,906.637'

Perimeter: 290.00' Area: 4,500Sq.Ft.
Error Closure: 0.000 Course: S14° 02' 10"E
Error North : 0.0000 East: 0.0000

Precision 1: 290,000,000.00

Parcel Name: PLAT - B12 L05
Description: 5
Process segment order counterclockwise: False
Enable mapcheck across chord: False
North:711,297.981' East:225,906.626'

Segment# 1: Line
Course: N89° 59' 12"W Length: 100.00'
North: 711,298.005' East: 225,806.626'

Segment# 2: Line
Course: N0° 00' 48"E Length: 45.00'
North: 711,343.005' East: 225,806.636'

Segment# 3: Line
Course: S89° 59' 12"E Length: 100.00'
North: 711,342.981' East: 225,906.636'

Segment# 4: Line
Course: S0° 00' 48"W Length: 24.12'
North: 711,318.861' East: 225,906.631'

Segment# 5: Line
Course: S0° 00' 48"W Length: 20.88'
North: 711,297.981' East: 225,906.626'

Perimeter: 290.00' Area: 4,500Sq.Ft.
Error Closure: 0.000 Course: N0° 00' 00"E
Error North : 0.0000 East: 0.0000

Precision 1: 290,000,000.00

Parcel Name: PLAT - B12 L06
Description: 6
Process segment order counterclockwise: False
Enable mapcheck across chord: False
North:711,252.981' East:225,906.615'

Segment# 1: Line
Course: N89° 59' 12"W Length: 100.00'
North: 711,253.005' East: 225,806.615'

Segment# 2: Line
Course: N0° 00' 48"E Length: 45.00'
North: 711,298.005' East: 225,806.626'

Segment# 3: Line
Course: S89° 59' 12"E Length: 100.00'
North: 711,297.981' East: 225,906.626'

Segment# 4: Line
Course: S0° 00' 48"W Length: 29.12'
North: 711,268.861' East: 225,906.619'

Segment# 5: Line
Course: S0° 00' 48"W Length: 15.88'
North: 711,252.981' East: 225,906.615'

Perimeter: 290.00' Area: 4,500Sq.Ft.
Error Closure: 0.000 Course: N90° 00' 00"E
Error North : 0.0000 East: 0.0000

Precision 1: 290,000,000.00

Parcel Name: PLAT - B12 L07
Description: 7
Process segment order counterclockwise: False
Enable mapcheck across chord: False
North:711,207.981' East:225,906.605'

Segment# 1: Line
Course: N89° 59' 12"W Length: 100.00'
North: 711,208.005' East: 225,806.605'

Segment# 2: Line
Course: N0° 00' 48"E Length: 45.00'
North: 711,253.005' East: 225,806.615'

Segment# 3: Line
Course: S89° 59' 12"E Length: 100.00'
North: 711,252.981' East: 225,906.615'

Segment# 4: Line
Course: S0° 00' 48"W Length: 34.12'
North: 711,218.861' East: 225,906.607'

Segment# 5: Line
Course: S0° 00' 48"W Length: 10.88'
North: 711,207.981' East: 225,906.605'

Perimeter: 290.00' Area: 4,500Sq.Ft.

Error Closure: 0.000 Course: N90° 00' 00"E
Error North : 0.0000 East: 0.0000

Precision 1: 290,000,000.00

Parcel Name: PLAT - B12 L08
Description: 8
Process segment order counterclockwise: False
Enable mapcheck across chord: False
North:711,162.981' East:225,906.594'

Segment# 1: Line
Course: N89° 59' 12"W Length: 100.00'
North: 711,163.005' East: 225,806.594'

Segment# 2: Line
Course: N0° 00' 48"E Length: 45.00'
North: 711,208.005' East: 225,806.605'

Segment# 3: Line
Course: S89° 59' 12"E Length: 100.00'
North: 711,207.981' East: 225,906.605'

Segment# 4: Line
Course: S0° 00' 48"W Length: 39.12'
North: 711,168.861' East: 225,906.596'

Segment# 5: Line
Course: S0° 00' 48"W Length: 5.88'
North: 711,162.981' East: 225,906.594'

Perimeter: 290.00' Area: 4,500Sq.Ft.
Error Closure: 0.000 Course: N0° 00' 00"E
Error North : 0.0000 East: 0.0000

Precision 1: 290,000,000.00

Parcel Name: PLAT - B12 L09
Description: 9
Process segment order counterclockwise: False
Enable mapcheck across chord: False
North:711,117.981' East:225,906.584'

Segment# 1: Line
Course: N89° 59' 12"W Length: 100.00'
North: 711,118.005' East: 225,806.584'

Segment# 2: Line
Course: N0° 00' 48"E Length: 45.00'
North: 711,163.005' East: 225,806.594'

Segment# 3: Line
Course: S89° 59' 12"E Length: 100.00'
North: 711,162.981' East: 225,906.594'

Segment# 4: Line
Course: S0° 00' 48"W Length: 44.12'
North: 711,118.861' East: 225,906.584'

Segment# 5: Line
Course: S0° 00' 48"W Length: 0.88'
North: 711,117.981' East: 225,906.584'

Perimeter: 290.00' Area: 4,500Sq.Ft.
Error Closure: 0.000 Course: N90° 00' 00"E
Error North : 0.0000 East: 0.0000

Precision 1: 290,000,000.00

Parcel Name: PLAT - B12 L10
Description: 10
Process segment order counterclockwise: False
Enable mapcheck across chord: False
North:711,117.981' East:225,906.584'

Segment# 1: Line
Course: S0° 00' 48"W Length: 45.00'
North: 711,072.982' East: 225,906.573'

Segment# 2: Line
Course: N89° 59' 12"W Length: 100.00'
North: 711,073.005' East: 225,806.573'

Segment# 3: Line
Course: N0° 00' 48"E Length: 45.00'
North: 711,118.005' East: 225,806.584'

Segment# 4: Line
Course: S89° 59' 12"E Length: 100.00'
North: 711,117.981' East: 225,906.584'

Perimeter: 290.00' Area: 4,500Sq.Ft.
Error Closure: 0.000 Course: N0° 00' 00"E
Error North : 0.0000 East: 0.0000

Precision 1: 290,000,000.00

Parcel Name: PLAT - B12 L11
Description: 11
Process segment order counterclockwise: False

Enable mapcheck across chord: False
North:711,027.982' East:225,906.563'

Segment# 1: Line
Course: N89° 59' 12"W Length: 100.00'
North: 711,028.005' East: 225,806.563'

Segment# 2: Line
Course: N0° 00' 48"E Length: 45.00'
North: 711,073.005' East: 225,806.573'

Segment# 3: Line
Course: S89° 59' 12"E Length: 100.00'
North: 711,072.982' East: 225,906.573'

Segment# 4: Line
Course: S0° 00' 48"W Length: 4.12'
North: 711,068.862' East: 225,906.572'

Segment# 5: Line
Course: S0° 00' 48"W Length: 40.88'
North: 711,027.982' East: 225,906.563'

Perimeter: 290.00' Area: 4,500Sq.Ft.
Error Closure: 0.000 Course: S14° 02' 10"E
Error North : 0.0000 East: 0.0000

Precision 1: 290,000,000.00

Parcel Name: PLAT - B12 L12
Description: 12
Process segment order counterclockwise: False
Enable mapcheck across chord: False
North:710,963.866' East:225,906.547'

Segment# 1: Line
Course: N89° 59' 12"W Length: 85.00'
North: 710,963.886' East: 225,821.547'

Segment# 2: Curve
Length: 23.56' Radius: 15.00'
Delta: 90°00'00" Tangent: 15.00'
Chord: 21.21' Course: N44° 59' 11"W
Course In: N0° 00' 49"E Course Out: N89° 59' 11"W
RP North: 710,978.886' East: 225,821.551'
End North: 710,978.890' East: 225,806.551'

Segment# 3: Line
Course: N0° 00' 48"E Length: 49.12'
North: 711,028.010' East: 225,806.562'

Segment# 4: Line
Course: S89° 59' 12"E Length: 100.00'
North: 711,027.986' East: 225,906.562'

Segment# 5: Line
Course: S0° 00' 48"W Length: 9.12'
North: 711,018.866' East: 225,906.560'

Segment# 6: Line
Course: S0° 00' 48"W Length: 55.00'
North: 710,963.866' East: 225,906.548'

Perimeter: 321.79' Area: 6,363Sq.Ft.
Error Closure: 0.000 Course: N45° 00' 49"E
Error North : 0.0001 East: 0.0001

Precision 1: 321,800,000.00

Parcel Name: PLAT - B12 L13
Description: 13
Process segment order counterclockwise: False
Enable mapcheck across chord: False
North:711,018.866' East:225,906.560'

Segment# 1: Line
Course: S89° 59' 12"E Length: 100.00'
North: 711,018.843' East: 226,006.560'

Segment# 2: Line
Course: S0° 00' 48"W Length: 40.00'
North: 710,978.843' East: 226,006.551'

Segment# 3: Curve
Length: 23.56' Radius: 15.00'
Delta: 90°00'00" Tangent: 15.00'
Chord: 21.21' Course: S45° 00' 48"W
Course In: N89° 59' 12"W Course Out: S0° 00' 48"W
RP North: 710,978.846' East: 225,991.551'
End North: 710,963.846' East: 225,991.548'

Segment# 4: Line
Course: N89° 59' 12"W Length: 85.00'
North: 710,963.866' East: 225,906.548'

Segment# 5: Line
Course: N0° 00' 48"E Length: 55.00'
North: 711,018.866' East: 225,906.560'

Perimeter: 303.56' Area: 5,452Sq.Ft.

Error Closure: 0.000 Course: N0° 00' 00"E
Error North : 0.0000 East: 0.0000

Precision 1: 303,560,000.00

Parcel Name: PLAT - B12 L14
Description: 14
Process segment order counterclockwise: False
Enable mapcheck across chord: False
North: 711,018.843' East: 226,006.560'

Segment# 1: Line
Course: N89° 59' 12"W Length: 100.00'
North: 711,018.866' East: 225,906.560'

Segment# 2: Line
Course: N0° 00' 48"E Length: 9.12'
North: 711,027.986' East: 225,906.563'

Segment# 3: Line
Course: N0° 00' 48"E Length: 40.88'
North: 711,068.866' East: 225,906.572'

Segment# 4: Line
Course: S89° 59' 12"E Length: 100.00'
North: 711,068.843' East: 226,006.572'

Segment# 5: Line
Course: S0° 00' 48"W Length: 50.00'
North: 711,018.843' East: 226,006.560'

Perimeter: 300.00' Area: 5,000Sq.Ft.
Error Closure: 0.000 Course: N0° 00' 00"E
Error North : 0.0000 East: 0.0000

Precision 1: 300,000,000.00

Parcel Name: PLAT - B12 L15
Description: 15
Process segment order counterclockwise: False
Enable mapcheck across chord: False
North: 711,068.843' East: 226,006.572'

Segment# 1: Line
Course: N89° 59' 12"W Length: 100.00'
North: 711,068.866' East: 225,906.572'

Segment# 2: Line
Course: N0° 00' 48"E Length: 4.12'
North: 711,072.986' East: 225,906.573'

Segment# 3: Line
Course: N0° 00' 48"E Length: 45.00'
North: 711,117.986' East: 225,906.584'

Segment# 4: Line
Course: N0° 00' 48"E Length: 0.88'
North: 711,118.866' East: 225,906.584'

Segment# 5: Line
Course: S89° 59' 12"E Length: 100.00'
North: 711,118.843' East: 226,006.584'

Segment# 6: Line
Course: S0° 00' 48"W Length: 50.00'
North: 711,068.843' East: 226,006.572'

Perimeter: 300.00' Area: 5,000Sq.Ft.
Error Closure: 0.000 Course: N0° 00' 00"E
Error North : 0.0000 East: 0.0000

Precision 1: 300,000,000.00

Parcel Name: PLAT - B12 L16
Description: 16
Process segment order counterclockwise: False
Enable mapcheck across chord: False
North:711,118.843' East:226,006.584'

Segment# 1: Line
Course: N89° 59' 12"W Length: 100.00'
North: 711,118.866' East: 225,906.584'

Segment# 2: Line
Course: N0° 00' 48"E Length: 44.12'
North: 711,162.986' East: 225,906.594'

Segment# 3: Line
Course: N0° 00' 48"E Length: 5.88'
North: 711,168.866' East: 225,906.596'

Segment# 4: Line
Course: S89° 59' 12"E Length: 100.00'
North: 711,168.843' East: 226,006.596'

Segment# 5: Line
Course: S0° 00' 48"W Length: 50.00'
North: 711,118.843' East: 226,006.584'

Perimeter: 300.00' Area: 5,000Sq.Ft.

Error Closure: 0.000 Course: N0° 00' 00"E
Error North : 0.0000 East: 0.0000

Precision 1: 300,000,000.00

Parcel Name: PLAT - B12 L17
Description: 17
Process segment order counterclockwise: False
Enable mapcheck across chord: False
North: 711,168.843' East: 226,006.596'

Segment# 1: Line
Course: N89° 59' 12"W Length: 100.00'
North: 711,168.866' East: 225,906.596'

Segment# 2: Line
Course: N0° 00' 48"E Length: 39.12'
North: 711,207.986' East: 225,906.605'

Segment# 3: Line
Course: N0° 00' 48"E Length: 10.88'
North: 711,218.866' East: 225,906.607'

Segment# 4: Line
Course: S89° 59' 12"E Length: 100.00'
North: 711,218.843' East: 226,006.607'

Segment# 5: Line
Course: S0° 00' 48"W Length: 50.00'
North: 711,168.843' East: 226,006.596'

Perimeter: 300.00' Area: 5,000Sq.Ft.
Error Closure: 0.000 Course: N0° 00' 00"E
Error North : 0.0000 East: 0.0000

Precision 1: 300,000,000.00

Parcel Name: PLAT - B12 L18
Description: 18
Process segment order counterclockwise: False
Enable mapcheck across chord: False
North: 711,218.843' East: 226,006.607'

Segment# 1: Line
Course: N89° 59' 12"W Length: 100.00'
North: 711,218.866' East: 225,906.607'

Segment# 2: Line
Course: N0° 00' 48"E Length: 34.12'
North: 711,252.986' East: 225,906.615'

Segment# 3: Line
Course: N0° 00' 48"E Length: 15.88'
North: 711,268.866' East: 225,906.619'

Segment# 4: Line
Course: S89° 59' 12"E Length: 100.00'
North: 711,268.843' East: 226,006.619'

Segment# 5: Line
Course: S0° 00' 48"W Length: 50.00'
North: 711,218.843' East: 226,006.607'

Perimeter: 300.00' Area: 5,000Sq.Ft.
Error Closure: 0.000 Course: N0° 00' 00"E
Error North : 0.0000 East: 0.0000

Precision 1: 300,000,000.00

Parcel Name: PLAT - B12 L19
Description: 19
Process segment order counterclockwise: False
Enable mapcheck across chord: False
North:711,268.843' East:226,006.619'

Segment# 1: Line
Course: N89° 59' 12"W Length: 100.00'
North: 711,268.866' East: 225,906.619'

Segment# 2: Line
Course: N0° 00' 48"E Length: 29.12'
North: 711,297.986' East: 225,906.626'

Segment# 3: Line
Course: N0° 00' 48"E Length: 20.88'
North: 711,318.866' East: 225,906.631'

Segment# 4: Line
Course: S89° 59' 12"E Length: 100.00'
North: 711,318.843' East: 226,006.631'

Segment# 5: Line
Course: S0° 00' 48"W Length: 50.00'
North: 711,268.843' East: 226,006.619'

Perimeter: 300.00' Area: 5,000Sq.Ft.
Error Closure: 0.000 Course: N0° 00' 00"E
Error North : 0.0000 East: 0.0000

Precision 1: 300,000,000.00

Parcel Name: PLAT - B12 L20
Description: 20
Process segment order counterclockwise: False
Enable mapcheck across chord: False
North:711,318.843' East:226,006.631'

Segment# 1: Line
Course: N89° 59' 12"W Length: 100.00'
North: 711,318.866' East: 225,906.631'

Segment# 2: Line
Course: N0° 00' 48"E Length: 24.12'
North: 711,342.986' East: 225,906.637'

Segment# 3: Line
Course: N0° 00' 48"E Length: 25.88'
North: 711,368.866' East: 225,906.643'

Segment# 4: Line
Course: S89° 59' 12"E Length: 100.00'
North: 711,368.843' East: 226,006.643'

Segment# 5: Line
Course: S0° 00' 48"W Length: 50.00'
North: 711,318.843' East: 226,006.631'

Perimeter: 300.00' Area: 5,000Sq.Ft.
Error Closure: 0.000 Course: N0° 00' 00"E
Error North : 0.0000 East: 0.0000

Precision 1: 300,000,000.00

Parcel Name: PLAT - B12 L21
Description: 21
Process segment order counterclockwise: False
Enable mapcheck across chord: False
North:711,368.843' East:226,006.643'

Segment# 1: Line
Course: N89° 59' 12"W Length: 100.00'
North: 711,368.866' East: 225,906.643'

Segment# 2: Line
Course: N0° 00' 48"E Length: 19.12'
North: 711,387.986' East: 225,906.647'

Segment# 3: Line
Course: N0° 00' 48"E Length: 30.88'
North: 711,418.866' East: 225,906.654'

Segment# 4: Line
Course: S89° 59' 12"E Length: 100.00'
North: 711,418.843' East: 226,006.654'

Segment# 5: Line
Course: S0° 00' 48"W Length: 50.00'
North: 711,368.843' East: 226,006.643'

Perimeter: 300.00' Area: 5,000Sq.Ft.
Error Closure: 0.000 Course: N0° 00' 00"E
Error North : 0.0000 East: 0.0000

Precision 1: 300,000,000.00

Parcel Name: PLAT - B12 L22
Description: 22
Process segment order counterclockwise: False
Enable mapcheck across chord: False
North:711,418.843' East:226,006.654'

Segment# 1: Line
Course: N89° 59' 12"W Length: 100.00'
North: 711,418.866' East: 225,906.654'

Segment# 2: Line
Course: N0° 00' 48"E Length: 14.12'
North: 711,432.986' East: 225,906.658'

Segment# 3: Line
Course: N0° 00' 48"E Length: 35.88'
North: 711,468.866' East: 225,906.666'

Segment# 4: Line
Course: S89° 59' 12"E Length: 100.00'
North: 711,468.843' East: 226,006.666'

Segment# 5: Line
Course: S0° 00' 48"W Length: 50.00'
North: 711,418.843' East: 226,006.654'

Perimeter: 300.00' Area: 5,000Sq.Ft.
Error Closure: 0.000 Course: N14° 02' 10"E
Error North : 0.0000 East: 0.0000

Precision 1: 300,000,000.00

Parcel Name: PLAT - B12 L23
Description: 23
Process segment order counterclockwise: False

Enable mapcheck across chord: False
North:711,468.843' East:226,006.666'

Segment# 1: Line
Course: N89° 59' 12"W Length: 100.00'
North: 711,468.866' East: 225,906.666'

Segment# 2: Line
Course: N0° 00' 48"E Length: 9.12'
North: 711,477.986' East: 225,906.668'

Segment# 3: Line
Course: N0° 00' 48"E Length: 40.88'
North: 711,518.866' East: 225,906.678'

Segment# 4: Line
Course: S89° 59' 12"E Length: 100.00'
North: 711,518.843' East: 226,006.678'

Segment# 5: Line
Course: S0° 00' 48"W Length: 50.00'
North: 711,468.843' East: 226,006.666'

Perimeter: 300.00' Area: 5,000Sq.Ft.
Error Closure: 0.000 Course: N0° 00' 00"E
Error North : 0.0000 East: 0.0000

Precision 1: 300,000,000.00

Parcel Name: PLAT - B13 L01
Description: 1
Process segment order counterclockwise: False
Enable mapcheck across chord: False
North:711,706.093' East:225,923.279'

Segment# 1: Line
Course: S89° 59' 12"E Length: 55.00'
North: 711,706.080' East: 225,978.279'

Segment# 2: Line
Course: S0° 00' 48"W Length: 100.00'
North: 711,606.080' East: 225,978.256'

Segment# 3: Line
Course: N89° 59' 12"W Length: 49.49'
North: 711,606.092' East: 225,928.766'

Segment# 4: Curve
Length: 23.56' Radius: 15.00'
Delta: 90°00'00" Tangent: 15.00'

Chord: 21.21' Course: N44° 59' 12"W
Course In: N0° 00' 48"E Course Out: N89° 59' 12"W
RP North: 711,621.092' East: 225,928.769'
End North: 711,621.095' East: 225,913.769'

Segment# 5: Line
Course: N0° 00' 48"E Length: 2.64'
North: 711,623.735' East: 225,913.770'

Segment# 6: Line
Course: N7° 15' 00"E Length: 75.66'
North: 711,698.790' East: 225,923.318'

Segment# 7: Line
Course: N0° 20' 41"W Length: 7.30'
North: 711,706.090' East: 225,923.274'

Perimeter: 313.65' Area: 5,973Sq.Ft.
Error Closure: 0.006 Course: S59° 52' 36"W
Error North : -0.0028 East: -0.0049

Precision 1: 52,275.00

Parcel Name: PLAT - B13 L02
Description: 2
Process segment order counterclockwise: False
Enable mapcheck across chord: False
North: 711,706.080' East: 225,978.279'

Segment# 1: Line
Course: S89° 59' 12"E Length: 50.00'
North: 711,706.068' East: 226,028.279'

Segment# 2: Line
Course: S0° 00' 48"W Length: 100.00'
North: 711,606.068' East: 226,028.256'

Segment# 3: Line
Course: N89° 59' 12"W Length: 50.00'
North: 711,606.080' East: 225,978.256'

Segment# 4: Line
Course: N0° 00' 48"E Length: 100.00'
North: 711,706.080' East: 225,978.279'

Perimeter: 300.00' Area: 5,000Sq.Ft.
Error Closure: 0.000 Course: N0° 00' 00"E
Error North : 0.0000 East: 0.0000

Precision 1: 300,000,000.00

Parcel Name: PLAT - B13 L03
Description: 3
Process segment order counterclockwise: False
Enable mapcheck across chord: False
North:711,706.068' East:226,028.279'

Segment# 1: Line
Course: S89° 59' 12"E Length: 50.00'
North: 711,706.057' East: 226,078.279'

Segment# 2: Line
Course: S0° 00' 48"W Length: 100.00'
North: 711,606.057' East: 226,078.256'

Segment# 3: Line
Course: N89° 59' 12"W Length: 50.00'
North: 711,606.068' East: 226,028.256'

Segment# 4: Line
Course: N0° 00' 48"E Length: 100.00'
North: 711,706.068' East: 226,028.279'

Perimeter: 300.00' Area: 5,000Sq.Ft.
Error Closure: 0.000 Course: N0° 00' 00"E
Error North : 0.0000 East: 0.0000

Precision 1: 300,000,000.00

Parcel Name: PLAT - B13 L04
Description: 4
Process segment order counterclockwise: False
Enable mapcheck across chord: False
North:711,706.056' East:226,078.279'

Segment# 1: Line
Course: S89° 59' 12"E Length: 50.00'
North: 711,706.045' East: 226,128.279'

Segment# 2: Line
Course: S0° 00' 48"W Length: 100.00'
North: 711,606.045' East: 226,128.256'

Segment# 3: Line
Course: N89° 59' 12"W Length: 50.00'
North: 711,606.056' East: 226,078.256'

Segment# 4: Line
Course: N0° 00' 48"E Length: 100.00'
North: 711,706.056' East: 226,078.279'

Perimeter: 300.00' Area: 5,000Sq.Ft.
Error Closure: 0.000 Course: N0° 00' 00"E
Error North : 0.0000 East: 0.0000

Precision 1: 300,000,000.00

Parcel Name: PLAT - B13 L05
Description: 5
Process segment order counterclockwise: False
Enable mapcheck across chord: False
North:711,706.045' East:226,128.279'

Segment# 1: Line
Course: S89° 59' 12"E Length: 25.00'
North: 711,706.039' East: 226,153.279'

Segment# 2: Line
Course: N84° 40' 39"E Length: 25.11'
North: 711,708.368' East: 226,178.281'

Segment# 3: Line
Course: S0° 00' 48"W Length: 102.33'
North: 711,606.038' East: 226,178.257'

Segment# 4: Line
Course: N89° 59' 12"W Length: 50.00'
North: 711,606.050' East: 226,128.257'

Segment# 5: Line
Course: N0° 00' 48"E Length: 100.00'
North: 711,706.050' East: 226,128.280'

Perimeter: 302.44' Area: 5,029Sq.Ft.
Error Closure: 0.005 Course: N13° 15' 39"E
Error North : 0.0051 East: 0.0012

Precision 1: 60,488.00

Parcel Name: PLAT - B13 L06
Description: 6
Process segment order counterclockwise: False
Enable mapcheck across chord: False
North:711,708.368' East:226,178.279'

Segment# 1: Line
Course: N84° 40' 39"E Length: 50.22'
North: 711,713.026' East: 226,228.283'

Segment# 2: Line

Course: S0° 00' 48"W Length: 101.04'
North: 711,611.986' East: 226,228.259'

Segment# 3: Curve

Length: 4.24' Radius: 95.00'
Delta: 2°33'16" Tangent: 2.12'
Chord: 4.24' Course: S76° 55' 34"W
Course In: S11° 47' 48"E Course Out: N14° 21' 04"W
RP North: 711,518.993' East: 226,247.681'
End North: 711,611.028' East: 226,224.134'

Segment# 4: Curve

Length: 40.11' Radius: 160.00'
Delta: 14°21'53" Tangent: 20.16'
Chord: 40.01' Course: S82° 49' 52"W
Course In: N14° 21' 04"W Course Out: S0° 00' 48"W
RP North: 711,766.036' East: 226,184.476'
End North: 711,606.036' East: 226,184.439'

Segment# 5: Line

Course: N89° 59' 12"W Length: 6.18'
North: 711,606.037' East: 226,178.259'

Segment# 6: Line

Course: N0° 00' 48"E Length: 102.33'
North: 711,708.367' East: 226,178.282'

Perimeter: 304.13' Area: 5,145Sq.Ft.
Error Closure: 0.003 Course: S74° 14' 43"E
Error North : -0.0009 East: 0.0031

Precision 1: 101,373.33

Parcel Name: PLAT - B13 L07

Description: 7

Process segment order counterclockwise: False

Enable mapcheck across chord: False

North:711,713.026' East:226,228.280'

Segment# 1: Line

Course: N84° 40' 39"E Length: 38.21'
North: 711,716.570' East: 226,266.326'

Segment# 2: Line

Course: S73° 53' 40"E Length: 36.89'
North: 711,706.337' East: 226,301.768'

Segment# 3: Line

Course: S16° 06' 20"W Length: 100.00'
North: 711,610.262' East: 226,274.027'

Segment# 4: Curve

Length: 46.26' Radius: 95.00'

Delta: 27°54'08" Tangent: 23.60'

Chord: 45.81' Course: N87° 50' 44"W

Course In: S16° 06' 20"W Course Out: N11° 47' 48"W

RP North: 711,518.990' East: 226,247.673'

End North: 711,611.984' East: 226,228.252'

Segment# 5: Line

Course: N0° 00' 48"E Length: 101.04'

North: 711,713.024' East: 226,228.275'

Perimeter: 322.41' Area: 6,108Sq.Ft.

Error Closure: 0.006 Course: S66° 29' 37"W

Error North : -0.0023 East: -0.0053

Precision 1: 53,733.33

Parcel Name: PLAT - B13 L08

Description: 8

Process segment order counterclockwise: False

Enable mapcheck across chord: False

North:711,601.895' East:226,294.063'

Segment# 1: Line

Course: N29° 13' 35"E Length: 100.00'

North: 711,689.165' East: 226,342.889'

Segment# 2: Line

Course: S60° 46' 25"E Length: 36.02'

North: 711,671.578' East: 226,374.324'

Segment# 3: Line

Course: S39° 50' 34"E Length: 54.25'

North: 711,629.924' East: 226,409.081'

Segment# 4: Line

Course: S55° 29' 58"W Length: 100.85'

North: 711,572.801' East: 226,325.968'

Segment# 5: Curve

Length: 43.56' Radius: 95.00'

Delta: 26°16'23" Tangent: 22.17'

Chord: 43.18' Course: N47° 38' 14"W

Course In: S55° 29' 58"W Course Out: N29° 13' 35"E

RP North: 711,518.992' East: 226,247.677'

End North: 711,601.898' East: 226,294.062'

Perimeter: 334.69' Area: 6,732Sq.Ft.

Error Closure: 0.003 Course: N24° 11' 04"W
Error North : 0.0031 East: -0.0014

Precision 1: 111,560.00

Parcel Name: PLAT - B13 L09
Description: 9
Process segment order counterclockwise: False
Enable mapcheck across chord: False
North: 711,590.170' East: 226,442.253'

Segment# 1: Line
Course: S0° 20' 44"E Length: 43.01'
North: 711,547.161' East: 226,442.512'

Segment# 2: Line
Course: S81° 46' 21"W Length: 101.86'
North: 711,532.584' East: 226,341.701'

Segment# 3: Curve
Length: 43.56' Radius: 95.00'
Delta: 26°16'23" Tangent: 22.17'
Chord: 43.18' Course: N21° 21' 51"W
Course In: S81° 46' 21"W Course Out: N55° 29' 58"E
RP North: 711,518.989' East: 226,247.678'
End North: 711,572.799' East: 226,325.970'

Segment# 4: Line
Course: N55° 29' 58"E Length: 100.85'
North: 711,629.922' East: 226,409.082'

Segment# 5: Line
Course: S39° 50' 34"E Length: 51.77'
North: 711,590.172' East: 226,442.251'

Perimeter: 341.06' Area: 7,172Sq.Ft.
Error Closure: 0.003 Course: N44° 41' 35"W
Error North : 0.0023 East: -0.0023

Precision 1: 113,683.33

Parcel Name: PLAT - B13 L10
Description: 10
Process segment order counterclockwise: False
Enable mapcheck across chord: False
North: 711,547.160' East: 226,442.512'

Segment# 1: Line
Course: S0° 20' 44"E Length: 62.30'
North: 711,484.861' East: 226,442.888'

Segment# 2: Line

Course: N89° 59' 12"W Length: 105.51'
North: 711,484.886' East: 226,337.378'

Segment# 3: Curve

Length: 10.73' Radius: 160.00'
Delta: 3°50'31" Tangent: 5.37'
Chord: 10.73' Course: N12° 28' 56"E
Course In: S79° 26' 19"E Course Out: N75° 35' 48"W
RP North: 711,455.560' East: 226,494.667'
End North: 711,495.359' East: 226,339.696'

Segment# 4: Curve

Length: 37.52' Radius: 95.00'
Delta: 22°37'51" Tangent: 19.01'
Chord: 37.28' Course: N3° 05' 16"E
Course In: N75° 35' 48"W Course Out: N81° 46' 21"E
RP North: 711,518.990' East: 226,247.682'
End North: 711,532.585' East: 226,341.704'

Segment# 5: Line

Course: N81° 46' 21"E Length: 101.86'
North: 711,547.161' East: 226,442.516'

Perimeter: 317.93' Area: 5,582Sq.Ft.
Error Closure: 0.004 Course: N73° 25' 04"E
Error North : 0.0012 East: 0.0040

Precision 1: 79,480.00

Parcel Name: PLAT - B13 L11

Description: 11

Process segment order counterclockwise: False

Enable mapcheck across chord: False

North:711,484.860' East:226,442.888'

Segment# 1: Line

Course: S0° 20' 44"E Length: 50.00'
North: 711,434.861' East: 226,443.189'

Segment# 2: Line

Course: N89° 59' 12"W Length: 108.53'
North: 711,434.887' East: 226,334.659'

Segment# 3: Line

Course: N0° 00' 48"E Length: 20.71'
North: 711,455.597' East: 226,334.664'

Segment# 4: Curve

Length: 29.46' Radius: 160.00'
Delta: 10°32'53" Tangent: 14.77'
Chord: 29.41' Course: N5° 17' 15"E
Course In: S89° 59' 12"E Course Out: N79° 26' 19"W
RP North: 711,455.559' East: 226,494.664'
End North: 711,484.886' East: 226,337.375'

Segment# 5: Line
Course: S89° 59' 12"E Length: 105.51'
North: 711,484.861' East: 226,442.885'

Perimeter: 314.21' Area: 5,392Sq.Ft.
Error Closure: 0.003 Course: N78° 54' 58"W
Error North : 0.0006 East: -0.0031

Precision 1: 104,736.67

Parcel Name: PLAT - B13 L12
Description: 12
Process segment order counterclockwise: False
Enable mapcheck across chord: False
North:711,434.860' East:226,443.189'

Segment# 1: Line
Course: S0° 20' 44"E Length: 50.00'
North: 711,384.861' East: 226,443.491'

Segment# 2: Line
Course: N89° 59' 12"W Length: 108.84'
North: 711,384.887' East: 226,334.651'

Segment# 3: Line
Course: N0° 00' 48"E Length: 50.00'
North: 711,434.887' East: 226,334.662'

Segment# 4: Line
Course: S89° 59' 12"E Length: 108.53'
North: 711,434.861' East: 226,443.192'

Perimeter: 317.38' Area: 5,434Sq.Ft.
Error Closure: 0.003 Course: N72° 54' 34"E
Error North : 0.0010 East: 0.0032

Precision 1: 105,790.00

Parcel Name: PLAT - B13 L13
Description: 13
Process segment order counterclockwise: False
Enable mapcheck across chord: False
North:711,384.860' East:226,443.491'

Segment# 1: Line
Course: S0° 20' 44"E Length: 50.00'
North: 711,334.861' East: 226,443.792'

Segment# 2: Line
Course: N89° 59' 12"W Length: 109.16'
North: 711,334.887' East: 226,334.632'

Segment# 3: Line
Course: N0° 00' 48"E Length: 50.00'
North: 711,384.887' East: 226,334.644'

Segment# 4: Line
Course: S89° 59' 12"E Length: 108.84'
North: 711,384.861' East: 226,443.484'

Perimeter: 318.00' Area: 5,450Sq.Ft.
Error Closure: 0.007 Course: N81° 47' 36"W
Error North : 0.0010 East: -0.0068

Precision 1: 45,428.57

Parcel Name: PLAT - B13 L14
Description: 14
Process segment order counterclockwise: False
Enable mapcheck across chord: False
North:711,334.860' East:226,443.792'

Segment# 1: Line
Course: S0° 20' 44"E Length: 50.00'
North: 711,284.861' East: 226,444.094'

Segment# 2: Line
Course: N89° 59' 12"W Length: 109.47'
North: 711,284.887' East: 226,334.624'

Segment# 3: Line
Course: N0° 00' 48"E Length: 50.00'
North: 711,334.887' East: 226,334.635'

Segment# 4: Line
Course: S89° 59' 12"E Length: 109.16'
North: 711,334.861' East: 226,443.795'

Perimeter: 318.63' Area: 5,466Sq.Ft.
Error Closure: 0.003 Course: N72° 54' 34"E
Error North : 0.0010 East: 0.0032

Precision 1: 106,210.00

Parcel Name: PLAT - B13 L15
Description: 15
Process segment order counterclockwise: False
Enable mapcheck across chord: False
North:711,284.860' East:226,444.094'

Segment# 1: Line
Course: S0° 20' 44"E Length: 55.00'
North: 711,229.861' East: 226,444.425'

Segment# 2: Line
Course: N89° 59' 12"W Length: 94.81'
North: 711,229.883' East: 226,349.615'

Segment# 3: Curve
Length: 23.56' Radius: 15.00'
Delta: 90°00'00" Tangent: 15.00'
Chord: 21.21' Course: N44° 59' 12"W
Course In: N0° 00' 48"E Course Out: N89° 59' 12"W
RP North: 711,244.883' East: 226,349.619'
End North: 711,244.887' East: 226,334.619'

Segment# 4: Line
Course: N0° 00' 48"E Length: 40.00'
North: 711,284.887' East: 226,334.628'

Segment# 5: Line
Course: S89° 59' 12"E Length: 109.47'
North: 711,284.861' East: 226,444.098'

Perimeter: 322.85' Area: 5,982Sq.Ft.
Error Closure: 0.005 Course: N76° 32' 54"E
Error North : 0.0011 East: 0.0045

Precision 1: 64,568.00

Parcel Name: PLAT - B14 L01
Description: 1
Process segment order counterclockwise: False
Enable mapcheck across chord: False
North:711,468.828' East:226,070.666'

Segment# 1: Line
Course: N0° 00' 48"E Length: 50.23'
North: 711,519.058' East: 226,070.678'

Segment# 2: Line
Course: S89° 59' 12"E Length: 100.00'
North: 711,519.034' East: 226,170.678'

Segment# 3: Line
Course: S0° 00' 48"W Length: 50.23'
North: 711,468.804' East: 226,170.666'

Segment# 4: Line
Course: N89° 59' 12"W Length: 100.00'
North: 711,468.828' East: 226,070.666'

Perimeter: 300.46' Area: 5,023Sq.Ft.
Error Closure: 0.000 Course: N0° 00' 00"E
Error North : 0.0000 East: 0.0000

Precision 1: 300,460,000.00

Parcel Name: PLAT - B14 L02
Description: 2
Process segment order counterclockwise: False
Enable mapcheck across chord: False
North:711,418.828' East:226,070.654'

Segment# 1: Line
Course: N0° 00' 48"E Length: 50.00'
North: 711,468.828' East: 226,070.666'

Segment# 2: Line
Course: S89° 59' 12"E Length: 100.00'
North: 711,468.804' East: 226,170.666'

Segment# 3: Line
Course: S0° 00' 48"W Length: 50.00'
North: 711,418.804' East: 226,170.654'

Segment# 4: Line
Course: N89° 59' 12"W Length: 100.00'
North: 711,418.828' East: 226,070.654'

Perimeter: 300.00' Area: 5,000Sq.Ft.
Error Closure: 0.000 Course: N0° 00' 00"E
Error North : 0.0000 East: 0.0000

Precision 1: 300,000,000.00

Parcel Name: PLAT - B14 L03
Description: 3
Process segment order counterclockwise: False
Enable mapcheck across chord: False
North:711,368.828' East:226,070.643'

Segment# 1: Line

Course: N0° 00' 48"E Length: 50.00'
North: 711,418.828' East: 226,070.654'

Segment# 2: Line
Course: S89° 59' 12"E Length: 100.00'
North: 711,418.804' East: 226,170.654'

Segment# 3: Line
Course: S0° 00' 48"W Length: 50.00'
North: 711,368.804' East: 226,170.643'

Segment# 4: Line
Course: N89° 59' 12"W Length: 100.00'
North: 711,368.828' East: 226,070.643'

Perimeter: 300.00' Area: 5,000Sq.Ft.
Error Closure: 0.000 Course: N0° 00' 00"E
Error North : 0.0000 East: 0.0000

Precision 1: 300,000,000.00

Parcel Name: PLAT - B14 L04
Description: 4
Process segment order counterclockwise: False
Enable mapcheck across chord: False
North:711,318.828' East:226,070.631'

Segment# 1: Line
Course: N0° 00' 48"E Length: 50.00'
North: 711,368.828' East: 226,070.643'

Segment# 2: Line
Course: S89° 59' 12"E Length: 100.00'
North: 711,368.804' East: 226,170.643'

Segment# 3: Line
Course: S0° 00' 48"W Length: 50.00'
North: 711,318.804' East: 226,170.631'

Segment# 4: Line
Course: N89° 59' 12"W Length: 100.00'
North: 711,318.828' East: 226,070.631'

Perimeter: 300.00' Area: 5,000Sq.Ft.
Error Closure: 0.000 Course: N0° 00' 00"E
Error North : 0.0000 East: 0.0000

Precision 1: 300,000,000.00

Parcel Name: PLAT - B14 L05

Description: 5
Process segment order counterclockwise: False
Enable mapcheck across chord: False
North:711,268.828' East:226,070.619'

Segment# 1: Line
Course: N0° 00' 48"E Length: 50.00'
North: 711,318.828' East: 226,070.631'

Segment# 2: Line
Course: S89° 59' 12"E Length: 100.00'
North: 711,318.804' East: 226,170.631'

Segment# 3: Line
Course: S0° 00' 48"W Length: 50.00'
North: 711,268.804' East: 226,170.619'

Segment# 4: Line
Course: N89° 59' 12"W Length: 100.00'
North: 711,268.828' East: 226,070.619'

Perimeter: 300.00' Area: 5,000Sq.Ft.
Error Closure: 0.000 Course: N0° 00' 00"E
Error North : 0.0000 East: 0.0000

Precision 1: 300,000,000.00

Parcel Name: PLAT - B14 L06
Description: 6
Process segment order counterclockwise: False
Enable mapcheck across chord: False
North:711,218.828' East:226,070.607'

Segment# 1: Line
Course: N0° 00' 48"E Length: 50.00'
North: 711,268.828' East: 226,070.619'

Segment# 2: Line
Course: S89° 59' 12"E Length: 100.00'
North: 711,268.804' East: 226,170.619'

Segment# 3: Line
Course: S0° 00' 48"W Length: 50.00'
North: 711,218.804' East: 226,170.607'

Segment# 4: Line
Course: N89° 59' 12"W Length: 100.00'
North: 711,218.828' East: 226,070.607'

Perimeter: 300.00' Area: 5,000Sq.Ft.

Error Closure: 0.000 Course: N0° 00' 00"E
Error North : 0.0000 East: 0.0000

Precision 1: 300,000,000.00

Parcel Name: PLAT - B14 L07
Description: 7
Process segment order counterclockwise: False
Enable mapcheck across chord: False
North:711,168.828' East:226,070.596'

Segment# 1: Line
Course: N0° 00' 48"E Length: 50.00'
North: 711,218.828' East: 226,070.607'

Segment# 2: Line
Course: S89° 59' 12"E Length: 100.00'
North: 711,218.804' East: 226,170.607'

Segment# 3: Line
Course: S0° 00' 48"W Length: 50.00'
North: 711,168.804' East: 226,170.596'

Segment# 4: Line
Course: N89° 59' 12"W Length: 100.00'
North: 711,168.828' East: 226,070.596'

Perimeter: 300.00' Area: 5,000Sq.Ft.
Error Closure: 0.000 Course: N0° 00' 00"E
Error North : 0.0000 East: 0.0000

Precision 1: 300,000,000.00

Parcel Name: PLAT - B14 L08
Description: 8
Process segment order counterclockwise: False
Enable mapcheck across chord: False
North:711,118.828' East:226,070.584'

Segment# 1: Line
Course: N0° 00' 48"E Length: 50.00'
North: 711,168.828' East: 226,070.596'

Segment# 2: Line
Course: S89° 59' 12"E Length: 100.00'
North: 711,168.804' East: 226,170.596'

Segment# 3: Line
Course: S0° 00' 48"W Length: 50.00'
North: 711,118.804' East: 226,170.584'

Segment# 4: Line
Course: N89° 59' 12"W Length: 100.00'
North: 711,118.828' East: 226,070.584'

Perimeter: 300.00' Area: 5,000Sq.Ft.
Error Closure: 0.000 Course: N0° 00' 00"E
Error North : 0.0000 East: 0.0000

Precision 1: 300,000,000.00

Parcel Name: PLAT - B14 L09
Description: 9
Process segment order counterclockwise: False
Enable mapcheck across chord: False
North:711,068.828' East:226,070.572'

Segment# 1: Line
Course: N0° 00' 48"E Length: 50.00'
North: 711,118.828' East: 226,070.584'

Segment# 2: Line
Course: S89° 59' 12"E Length: 100.00'
North: 711,118.804' East: 226,170.584'

Segment# 3: Line
Course: S0° 00' 48"W Length: 50.00'
North: 711,068.804' East: 226,170.572'

Segment# 4: Line
Course: N89° 59' 12"W Length: 100.00'
North: 711,068.828' East: 226,070.572'

Perimeter: 300.00' Area: 5,000Sq.Ft.
Error Closure: 0.000 Course: N0° 00' 00"E
Error North : 0.0000 East: 0.0000

Precision 1: 300,000,000.00

Parcel Name: PLAT - B14 L10
Description: 10
Process segment order counterclockwise: False
Enable mapcheck across chord: False
North:711,018.828' East:226,070.560'

Segment# 1: Line
Course: N0° 00' 48"E Length: 50.00'
North: 711,068.828' East: 226,070.572'

Segment# 2: Line

Course: S89° 59' 12"E Length: 100.00'
North: 711,068.804' East: 226,170.572'

Segment# 3: Line
Course: S0° 00' 48"W Length: 50.00'
North: 711,018.804' East: 226,170.560'

Segment# 4: Line
Course: N89° 59' 12"W Length: 100.00'
North: 711,018.828' East: 226,070.560'

Perimeter: 300.00' Area: 5,000Sq.Ft.
Error Closure: 0.000 Course: N0° 00' 00"E
Error North : 0.0000 East: 0.0000

Precision 1: 300,000,000.00

Parcel Name: PLAT - B14 L11
Description: 11
Process segment order counterclockwise: False
Enable mapcheck across chord: False
North:710,963.824' East:226,085.547'

Segment# 1: Curve
Length: 23.56' Radius: 15.00'
Delta: 90°00'00" Tangent: 15.00'
Chord: 21.21' Course: N44° 59' 12"W
Course In: N0° 00' 48"E Course Out: N89° 59' 12"W
RP North: 710,978.824' East: 226,085.551'
End North: 710,978.828' East: 226,070.551'

Segment# 2: Line
Course: N0° 00' 48"E Length: 40.00'
North: 711,018.828' East: 226,070.560'

Segment# 3: Line
Course: S89° 59' 12"E Length: 100.00'
North: 711,018.804' East: 226,170.560'

Segment# 4: Line
Course: S0° 00' 48"W Length: 55.00'
North: 710,963.804' East: 226,170.547'

Segment# 5: Line
Course: N89° 59' 12"W Length: 85.00'
North: 710,963.824' East: 226,085.547'

Perimeter: 303.56' Area: 5,452Sq.Ft.
Error Closure: 0.000 Course: S0° 00' 00"E
Error North : 0.0000 East: 0.0000

Precision 1: 303,560,000.00

Parcel Name: PLAT - B14 L12

Description: 12

Process segment order counterclockwise: False

Enable mapcheck across chord: False

North: 710,963.804' East: 226,170.547'

Segment# 1: Line

Course: N0° 00' 48"E Length: 55.00'

North: 711,018.804' East: 226,170.560'

Segment# 2: Line

Course: S89° 59' 12"E Length: 100.00'

North: 711,018.781' East: 226,270.560'

Segment# 3: Line

Course: S0° 00' 48"W Length: 32.00'

North: 710,986.781' East: 226,270.553'

Segment# 4: Curve

Length: 36.13' Radius: 23.00'

Delta: 90°00'00" Tangent: 23.00'

Chord: 32.53' Course: S45° 00' 48"W

Course In: N89° 59' 12"W Course Out: S0° 00' 48"W

RP North: 710,986.786' East: 226,247.553'

End North: 710,963.786' East: 226,247.547'

Segment# 5: Line

Course: N89° 59' 12"W Length: 77.00'

North: 710,963.804' East: 226,170.547'

Perimeter: 300.13' Area: 5,386Sq.Ft.

Error Closure: 0.000 Course: N0° 00' 00"E

Error North : 0.0000 East: 0.0000

Precision 1: 300,130,000.00

Parcel Name: PLAT - B14 L13

Description: 13

Process segment order counterclockwise: False

Enable mapcheck across chord: False

North: 711,018.804' East: 226,170.560'

Segment# 1: Line

Course: N0° 00' 48"E Length: 50.00'

North: 711,068.804' East: 226,170.572'

Segment# 2: Line

Course: S89° 59' 12"E Length: 100.00'
North: 711,068.781' East: 226,270.572'

Segment# 3: Line
Course: S0° 00' 48"W Length: 50.00'
North: 711,018.781' East: 226,270.560'

Segment# 4: Line
Course: N89° 59' 12"W Length: 100.00'
North: 711,018.804' East: 226,170.560'

Perimeter: 300.00' Area: 5,000Sq.Ft.
Error Closure: 0.000 Course: N0° 00' 00"E
Error North : 0.0000 East: 0.0000

Precision 1: 300,000,000.00

Parcel Name: PLAT - B14 L14
Description: 14
Process segment order counterclockwise: False
Enable mapcheck across chord: False
North:711,068.804' East:226,170.572'

Segment# 1: Line
Course: N0° 00' 48"E Length: 50.00'
North: 711,118.804' East: 226,170.584'

Segment# 2: Line
Course: S89° 59' 12"E Length: 100.00'
North: 711,118.781' East: 226,270.584'

Segment# 3: Line
Course: S0° 00' 48"W Length: 50.00'
North: 711,068.781' East: 226,270.572'

Segment# 4: Line
Course: N89° 59' 12"W Length: 100.00'
North: 711,068.804' East: 226,170.572'

Perimeter: 300.00' Area: 5,000Sq.Ft.
Error Closure: 0.000 Course: N0° 00' 00"E
Error North : 0.0000 East: 0.0000

Precision 1: 300,000,000.00

Parcel Name: PLAT - B14 L15
Description: 15
Process segment order counterclockwise: False
Enable mapcheck across chord: False
North:711,118.804' East:226,170.584'

Segment# 1: Line
Course: N0° 00' 48"E Length: 50.00'
North: 711,168.804' East: 226,170.596'

Segment# 2: Line
Course: S89° 59' 12"E Length: 100.00'
North: 711,168.781' East: 226,270.596'

Segment# 3: Line
Course: S0° 00' 48"W Length: 50.00'
North: 711,118.781' East: 226,270.584'

Segment# 4: Line
Course: N89° 59' 12"W Length: 100.00'
North: 711,118.804' East: 226,170.584'

Perimeter: 300.00' Area: 5,000Sq.Ft.
Error Closure: 0.000 Course: N0° 00' 00"E
Error North : 0.0000 East: 0.0000

Precision 1: 300,000,000.00

Parcel Name: PLAT - B14 L16
Description: 16
Process segment order counterclockwise: False
Enable mapcheck across chord: False
North:711,168.804' East:226,170.596'

Segment# 1: Line
Course: N0° 00' 48"E Length: 50.00'
North: 711,218.804' East: 226,170.607'

Segment# 2: Line
Course: S89° 59' 12"E Length: 100.00'
North: 711,218.781' East: 226,270.607'

Segment# 3: Line
Course: S0° 00' 48"W Length: 50.00'
North: 711,168.781' East: 226,270.596'

Segment# 4: Line
Course: N89° 59' 12"W Length: 100.00'
North: 711,168.804' East: 226,170.596'

Perimeter: 300.00' Area: 5,000Sq.Ft.
Error Closure: 0.000 Course: N0° 00' 00"E
Error North : 0.0000 East: 0.0000

Precision 1: 300,000,000.00

Parcel Name: PLAT - B14 L17
Description: 17
Process segment order counterclockwise: False
Enable mapcheck across chord: False
North:711,218.804' East:226,170.607'

Segment# 1: Line
Course: N0° 00' 48"E Length: 50.00'
North: 711,268.804' East: 226,170.619'

Segment# 2: Line
Course: S89° 59' 12"E Length: 100.00'
North: 711,268.781' East: 226,270.619'

Segment# 3: Line
Course: S0° 00' 48"W Length: 50.00'
North: 711,218.781' East: 226,270.607'

Segment# 4: Line
Course: N89° 59' 12"W Length: 100.00'
North: 711,218.804' East: 226,170.607'

Perimeter: 300.00' Area: 5,000Sq.Ft.
Error Closure: 0.000 Course: N0° 00' 00"E
Error North : 0.0000 East: 0.0000

Precision 1: 300,000,000.00

Parcel Name: PLAT - B14 L18
Description: 18
Process segment order counterclockwise: False
Enable mapcheck across chord: False
North:711,268.804' East:226,170.619'

Segment# 1: Line
Course: N0° 00' 48"E Length: 50.00'
North: 711,318.804' East: 226,170.631'

Segment# 2: Line
Course: S89° 59' 12"E Length: 100.00'
North: 711,318.781' East: 226,270.631'

Segment# 3: Line
Course: S0° 00' 48"W Length: 50.00'
North: 711,268.781' East: 226,270.619'

Segment# 4: Line
Course: N89° 59' 12"W Length: 100.00'
North: 711,268.804' East: 226,170.619'

Perimeter: 300.00' Area: 5,000Sq.Ft.
Error Closure: 0.000 Course: N0° 00' 00"E
Error North : 0.0000 East: 0.0000

Precision 1: 300,000,000.00

Parcel Name: PLAT - B14 L19
Description: 19
Process segment order counterclockwise: False
Enable mapcheck across chord: False
North:711,318.804' East:226,170.631'

Segment# 1: Line
Course: N0° 00' 48"E Length: 50.00'
North: 711,368.804' East: 226,170.643'

Segment# 2: Line
Course: S89° 59' 12"E Length: 100.00'
North: 711,368.781' East: 226,270.643'

Segment# 3: Line
Course: S0° 00' 48"W Length: 50.00'
North: 711,318.781' East: 226,270.631'

Segment# 4: Line
Course: N89° 59' 12"W Length: 100.00'
North: 711,318.804' East: 226,170.631'

Perimeter: 300.00' Area: 5,000Sq.Ft.
Error Closure: 0.000 Course: N0° 00' 00"E
Error North : 0.0000 East: 0.0000

Precision 1: 300,000,000.00

Parcel Name: PLAT - B14 L20
Description: 20
Process segment order counterclockwise: False
Enable mapcheck across chord: False
North:711,368.804' East:226,170.643'

Segment# 1: Line
Course: N0° 00' 48"E Length: 50.00'
North: 711,418.804' East: 226,170.654'

Segment# 2: Line
Course: S89° 59' 12"E Length: 100.00'
North: 711,418.781' East: 226,270.654'

Segment# 3: Line

Course: S0° 00' 48"W Length: 50.00'
North: 711,368.781' East: 226,270.643'

Segment# 4: Line

Course: N89° 59' 12"W Length: 100.00'
North: 711,368.804' East: 226,170.643'

Perimeter: 300.00' Area: 5,000Sq.Ft.
Error Closure: 0.000 Course: N0° 00' 00"E
Error North : 0.0000 East: 0.0000

Precision 1: 300,000,000.00

Parcel Name: PLAT - B14 L21

Description: 21

Process segment order counterclockwise: False

Enable mapcheck across chord: False

North:711,418.804' East:226,170.654'

Segment# 1: Line

Course: N0° 00' 48"E Length: 50.00'
North: 711,468.804' East: 226,170.666'

Segment# 2: Line

Course: S89° 59' 12"E Length: 100.00'
North: 711,468.781' East: 226,270.666'

Segment# 3: Line

Course: S0° 00' 48"W Length: 50.00'
North: 711,418.781' East: 226,270.654'

Segment# 4: Line

Course: N89° 59' 12"W Length: 100.00'
North: 711,418.804' East: 226,170.654'

Perimeter: 300.00' Area: 5,000Sq.Ft.
Error Closure: 0.000 Course: N0° 00' 00"E
Error North : 0.0000 East: 0.0000

Precision 1: 300,000,000.00

Parcel Name: PLAT - B14 L22

Description: 22

Process segment order counterclockwise: False

Enable mapcheck across chord: False

North:711,468.804' East:226,170.666'

Segment# 1: Line

Course: N0° 00' 48"E Length: 50.23'
North: 711,519.034' East: 226,170.678'

Segment# 2: Line
Course: S89° 59' 12"E Length: 100.00'
North: 711,519.011' East: 226,270.678'

Segment# 3: Line
Course: S0° 00' 48"W Length: 50.23'
North: 711,468.781' East: 226,270.666'

Segment# 4: Line
Course: N89° 59' 12"W Length: 100.00'
North: 711,468.804' East: 226,170.666'

Perimeter: 300.46' Area: 5,023Sq.Ft.
Error Closure: 0.000 Course: N0° 00' 00"E
Error North : 0.0000 East: 0.0000

Precision 1: 300,460,000.00

Parcel Name: PLAT - B15 L01
Description: 1
Process segment order counterclockwise: False
Enable mapcheck across chord: False
North:710,800.003' East:225,324.218'

Segment# 1: Line
Course: N0° 00' 48"E Length: 100.00'
North: 710,900.003' East: 225,324.241'

Segment# 2: Line
Course: S89° 59' 12"E Length: 45.00'
North: 710,899.993' East: 225,369.241'

Segment# 3: Line
Course: S0° 00' 48"W Length: 100.00'
North: 710,799.993' East: 225,369.218'

Segment# 4: Line
Course: N89° 59' 12"W Length: 45.00'
North: 710,800.003' East: 225,324.218'

Perimeter: 290.00' Area: 4,500Sq.Ft.
Error Closure: 0.000 Course: N0° 00' 00"E
Error North : 0.0000 East: 0.0000

Precision 1: 290,000,000.00

Parcel Name: PLAT - B15 L02
Description: 2
Process segment order counterclockwise: False

Enable mapcheck across chord: False
North:710,799.993' East:225,369.218'

Segment# 1: Line
Course: N0° 00' 48"E Length: 100.00'
North: 710,899.993' East: 225,369.241'

Segment# 2: Line
Course: S89° 59' 12"E Length: 45.00'
North: 710,899.982' East: 225,414.241'

Segment# 3: Line
Course: S0° 00' 48"W Length: 100.00'
North: 710,799.982' East: 225,414.218'

Segment# 4: Line
Course: N89° 59' 12"W Length: 45.00'
North: 710,799.993' East: 225,369.218'

Perimeter: 290.00' Area: 4,500Sq.Ft.
Error Closure: 0.000 Course: N0° 00' 00"E
Error North : 0.0000 East: 0.0000

Precision 1: 290,000,000.00

Parcel Name: PLAT - B15 L03
Description: 3
Process segment order counterclockwise: False
Enable mapcheck across chord: False
North:710,799.982' East:225,414.218'

Segment# 1: Line
Course: N0° 00' 48"E Length: 100.00'
North: 710,899.982' East: 225,414.241'

Segment# 2: Line
Course: S89° 59' 12"E Length: 45.00'
North: 710,899.971' East: 225,459.241'

Segment# 3: Line
Course: S0° 00' 48"W Length: 100.00'
North: 710,799.971' East: 225,459.218'

Segment# 4: Line
Course: N89° 59' 12"W Length: 45.00'
North: 710,799.982' East: 225,414.218'

Perimeter: 290.00' Area: 4,500Sq.Ft.
Error Closure: 0.000 Course: N0° 00' 00"E
Error North : 0.0000 East: 0.0000

Precision 1: 290,000,000.00

Parcel Name: PLAT - B15 L04

Description: 4

Process segment order counterclockwise: False

Enable mapcheck across chord: False

North:710,799.971' East:225,459.218'

Segment# 1: Line

Course: N0° 00' 48"E Length: 100.00'

North: 710,899.971' East: 225,459.241'

Segment# 2: Line

Course: S89° 59' 12"E Length: 45.00'

North: 710,899.961' East: 225,504.241'

Segment# 3: Line

Course: S0° 00' 48"W Length: 100.00'

North: 710,799.961' East: 225,504.218'

Segment# 4: Line

Course: N89° 59' 12"W Length: 45.00'

North: 710,799.971' East: 225,459.218'

Perimeter: 290.00' Area: 4,500Sq.Ft.

Error Closure: 0.000 Course: N0° 00' 00"E

Error North : 0.0000 East: 0.0000

Precision 1: 290,000,000.00

Parcel Name: PLAT - B15 L05

Description: 5

Process segment order counterclockwise: False

Enable mapcheck across chord: False

North:710,799.961' East:225,504.218'

Segment# 1: Line

Course: N0° 00' 48"E Length: 100.00'

North: 710,899.961' East: 225,504.241'

Segment# 2: Line

Course: S89° 59' 12"E Length: 45.00'

North: 710,899.950' East: 225,549.241'

Segment# 3: Line

Course: S0° 00' 48"W Length: 100.00'

North: 710,799.950' East: 225,549.218'

Segment# 4: Line

Course: N89° 59' 12"W Length: 45.00'
North: 710,799.961' East: 225,504.218'

Perimeter: 290.00' Area: 4,500Sq.Ft.
Error Closure: 0.000 Course: N0° 00' 00"E
Error North : 0.0000 East: 0.0000

Precision 1: 290,000,000.00

Parcel Name: PLAT - B15 L06
Description: 6
Process segment order counterclockwise: False
Enable mapcheck across chord: False
North:710,799.950' East:225,549.218'

Segment# 1: Line
Course: N0° 00' 48"E Length: 100.00'
North: 710,899.950' East: 225,549.241'

Segment# 2: Line
Course: S89° 59' 12"E Length: 45.00'
North: 710,899.940' East: 225,594.241'

Segment# 3: Line
Course: S0° 00' 48"W Length: 100.00'
North: 710,799.940' East: 225,594.218'

Segment# 4: Line
Course: N89° 59' 12"W Length: 45.00'
North: 710,799.950' East: 225,549.218'

Perimeter: 290.00' Area: 4,500Sq.Ft.
Error Closure: 0.000 Course: N0° 00' 00"E
Error North : 0.0000 East: 0.0000

Precision 1: 290,000,000.00

Parcel Name: PLAT - B15 L07
Description: 7
Process segment order counterclockwise: False
Enable mapcheck across chord: False
North:710,799.940' East:225,594.218'

Segment# 1: Line
Course: N0° 00' 48"E Length: 100.00'
North: 710,899.940' East: 225,594.241'

Segment# 2: Line
Course: S89° 59' 12"E Length: 45.00'
North: 710,899.929' East: 225,639.241'

Segment# 3: Line
Course: S0° 00' 48"W Length: 100.00'
North: 710,799.929' East: 225,639.218'

Segment# 4: Line
Course: N89° 59' 12"W Length: 45.00'
North: 710,799.940' East: 225,594.218'

Perimeter: 290.00' Area: 4,500Sq.Ft.
Error Closure: 0.000 Course: N0° 00' 00"E
Error North : 0.0000 East: 0.0000

Precision 1: 290,000,000.00

Parcel Name: PLAT - B15 L08
Description: 8
Process segment order counterclockwise: False
Enable mapcheck across chord: False
North:710,799.929' East:225,639.218'

Segment# 1: Line
Course: N0° 00' 48"E Length: 100.00'
North: 710,899.929' East: 225,639.241'

Segment# 2: Line
Course: S89° 59' 12"E Length: 45.00'
North: 710,899.919' East: 225,684.241'

Segment# 3: Line
Course: S0° 00' 48"W Length: 100.00'
North: 710,799.919' East: 225,684.218'

Segment# 4: Line
Course: N89° 59' 12"W Length: 45.00'
North: 710,799.929' East: 225,639.218'

Perimeter: 290.00' Area: 4,500Sq.Ft.
Error Closure: 0.000 Course: N0° 00' 00"E
Error North : 0.0000 East: 0.0000

Precision 1: 290,000,000.00

Parcel Name: PLAT - B15 L09
Description: 9
Process segment order counterclockwise: False
Enable mapcheck across chord: False
North:710,799.918' East:225,684.218'

Segment# 1: Line

Course: N0° 00' 48"E Length: 100.00'
North: 710,899.918' East: 225,684.241'

Segment# 2: Line
Course: S89° 59' 12"E Length: 45.00'
North: 710,899.908' East: 225,729.241'

Segment# 3: Line
Course: S0° 00' 48"W Length: 100.00'
North: 710,799.908' East: 225,729.218'

Segment# 4: Line
Course: N89° 59' 12"W Length: 45.00'
North: 710,799.918' East: 225,684.218'

Perimeter: 290.00' Area: 4,500Sq.Ft.
Error Closure: 0.000 Course: N0° 00' 00"E
Error North : 0.0000 East: 0.0000

Precision 1: 290,000,000.00

Parcel Name: PLAT - B15 L10
Description: 10
Process segment order counterclockwise: False
Enable mapcheck across chord: False
North:710,799.908' East:225,729.218'

Segment# 1: Line
Course: N0° 00' 48"E Length: 100.00'
North: 710,899.908' East: 225,729.241'

Segment# 2: Line
Course: S89° 59' 12"E Length: 45.00'
North: 710,899.897' East: 225,774.241'

Segment# 3: Line
Course: S0° 00' 48"W Length: 100.00'
North: 710,799.897' East: 225,774.218'

Segment# 4: Line
Course: N89° 59' 12"W Length: 45.00'
North: 710,799.908' East: 225,729.218'

Perimeter: 290.00' Area: 4,500Sq.Ft.
Error Closure: 0.000 Course: N0° 00' 00"E
Error North : 0.0000 East: 0.0000

Precision 1: 290,000,000.00

Parcel Name: PLAT - B15 L11

Description: 11
Process segment order counterclockwise: False
Enable mapcheck across chord: False
North:710,799.897' East:225,774.218'

Segment# 1: Line
Course: N0° 00' 48"E Length: 100.00'
North: 710,899.897' East: 225,774.241'

Segment# 2: Line
Course: S89° 59' 12"E Length: 45.00'
North: 710,899.887' East: 225,819.241'

Segment# 3: Line
Course: S0° 00' 48"W Length: 100.00'
North: 710,799.887' East: 225,819.218'

Segment# 4: Line
Course: N89° 59' 12"W Length: 45.00'
North: 710,799.897' East: 225,774.218'

Perimeter: 290.00' Area: 4,500Sq.Ft.
Error Closure: 0.000 Course: N0° 00' 00"E
Error North : 0.0000 East: 0.0000

Precision 1: 290,000,000.00

Parcel Name: PLAT - B15 L12
Description: 12
Process segment order counterclockwise: False
Enable mapcheck across chord: False
North:710,799.887' East:225,819.218'

Segment# 1: Line
Course: N0° 00' 48"E Length: 100.00'
North: 710,899.887' East: 225,819.241'

Segment# 2: Line
Course: S89° 59' 12"E Length: 45.00'
North: 710,899.876' East: 225,864.241'

Segment# 3: Line
Course: S0° 00' 48"W Length: 100.00'
North: 710,799.876' East: 225,864.218'

Segment# 4: Line
Course: N89° 59' 12"W Length: 45.00'
North: 710,799.887' East: 225,819.218'

Perimeter: 290.00' Area: 4,500Sq.Ft.

Error Closure: 0.000 Course: N0° 00' 00"E
Error North : 0.0000 East: 0.0000

Precision 1: 290,000,000.00

Parcel Name: PLAT - B15 L13
Description: 13
Process segment order counterclockwise: False
Enable mapcheck across chord: False
North: 710,799.876' East: 225,864.218'

Segment# 1: Line
Course: N0° 00' 48"E Length: 100.00'
North: 710,899.876' East: 225,864.241'

Segment# 2: Line
Course: S89° 59' 12"E Length: 45.00'
North: 710,899.866' East: 225,909.241'

Segment# 3: Line
Course: S0° 00' 48"W Length: 100.00'
North: 710,799.866' East: 225,909.218'

Segment# 4: Line
Course: N89° 59' 12"W Length: 45.00'
North: 710,799.876' East: 225,864.218'

Perimeter: 290.00' Area: 4,500Sq.Ft.
Error Closure: 0.000 Course: N0° 00' 00"E
Error North : 0.0000 East: 0.0000

Precision 1: 290,000,000.00

Parcel Name: PLAT - B15 L14
Description: 14
Process segment order counterclockwise: False
Enable mapcheck across chord: False
North: 710,799.858' East: 225,942.852'

Segment# 1: Line
Course: N0° 00' 48"E Length: 100.00'
North: 710,899.858' East: 225,942.875'

Segment# 2: Line
Course: S89° 59' 12"E Length: 50.00'
North: 710,899.846' East: 225,992.875'

Segment# 3: Line
Course: S0° 00' 48"W Length: 100.00'
North: 710,799.846' East: 225,992.852'

Segment# 4: Line
Course: N89° 59' 12"W Length: 50.00'
North: 710,799.858' East: 225,942.852'

Perimeter: 300.00' Area: 5,000Sq.Ft.
Error Closure: 0.000 Course: N0° 00' 00"E
Error North : 0.0000 East: 0.0000

Precision 1: 300,000,000.00

Parcel Name: PLAT - B15 L15
Description: 15
Process segment order counterclockwise: False
Enable mapcheck across chord: False
North:710,799.846' East:225,992.852'

Segment# 1: Line
Course: N0° 00' 48"E Length: 100.00'
North: 710,899.846' East: 225,992.875'

Segment# 2: Line
Course: S89° 59' 12"E Length: 50.00'
North: 710,899.834' East: 226,042.875'

Segment# 3: Line
Course: S0° 00' 48"W Length: 100.00'
North: 710,799.834' East: 226,042.852'

Segment# 4: Line
Course: N89° 59' 12"W Length: 50.00'
North: 710,799.846' East: 225,992.852'

Perimeter: 300.00' Area: 5,000Sq.Ft.
Error Closure: 0.000 Course: N0° 00' 00"E
Error North : 0.0000 East: 0.0000

Precision 1: 300,000,000.00

Parcel Name: PLAT - B15 L16
Description: 16
Process segment order counterclockwise: False
Enable mapcheck across chord: False
North:710,799.834' East:226,042.852'

Segment# 1: Line
Course: N0° 00' 48"E Length: 100.00'
North: 710,899.834' East: 226,042.875'

Segment# 2: Line

Course: S89° 59' 12"E Length: 50.00'
North: 710,899.823' East: 226,092.875'

Segment# 3: Line
Course: S0° 00' 48"W Length: 100.00'
North: 710,799.823' East: 226,092.852'

Segment# 4: Line
Course: N89° 59' 12"W Length: 50.00'
North: 710,799.834' East: 226,042.852'

Perimeter: 300.00' Area: 5,000Sq.Ft.
Error Closure: 0.000 Course: N0° 00' 00"E
Error North : 0.0000 East: 0.0000

Precision 1: 300,000,000.00

Parcel Name: PLAT - B15 L17
Description: 17
Process segment order counterclockwise: False
Enable mapcheck across chord: False
North:710,799.822' East:226,092.852'

Segment# 1: Line
Course: N0° 00' 48"E Length: 100.00'
North: 710,899.822' East: 226,092.875'

Segment# 2: Line
Course: S89° 59' 12"E Length: 50.00'
North: 710,899.811' East: 226,142.875'

Segment# 3: Line
Course: S0° 00' 48"W Length: 100.00'
North: 710,799.811' East: 226,142.852'

Segment# 4: Line
Course: N89° 59' 12"W Length: 50.00'
North: 710,799.822' East: 226,092.852'

Perimeter: 300.00' Area: 5,000Sq.Ft.
Error Closure: 0.000 Course: N0° 00' 00"E
Error North : 0.0000 East: 0.0000

Precision 1: 300,000,000.00

Parcel Name: PLAT - B15 L18
Description: 18
Process segment order counterclockwise: False
Enable mapcheck across chord: False
North:710,799.811' East:226,142.852'

Segment# 1: Line
Course: N0° 00' 48"E Length: 100.00'
North: 710,899.811' East: 226,142.875'

Segment# 2: Line
Course: S89° 59' 12"E Length: 41.28'
North: 710,899.801' East: 226,184.155'

Segment# 3: Curve
Length: 8.72' Radius: 160.00'
Delta: 3°07'21" Tangent: 4.36'
Chord: 8.72' Course: S88° 25' 31"E
Course In: S0° 00' 48"W Course Out: N3° 08' 10"E
RP North: 710,739.801' East: 226,184.118'
End North: 710,899.561' East: 226,192.871'

Segment# 4: Line
Course: S0° 00' 48"W Length: 100.40'
North: 710,799.162' East: 226,192.848'

Segment# 5: Line
Course: N89° 15' 26"W Length: 50.00'
North: 710,799.810' East: 226,142.852'

Perimeter: 300.41' Area: 5,015Sq.Ft.
Error Closure: 0.001 Course: S9° 34' 06"E
Error North : -0.0010 East: 0.0002

Precision 1: 300,400.00

Parcel Name: PLAT - B15 L19
Description: 19
Process segment order counterclockwise: False
Enable mapcheck across chord: False
North:710,799.163' East:226,192.852'

Segment# 1: Line
Course: N0° 00' 48"E Length: 100.40'
North: 710,899.563' East: 226,192.875'

Segment# 2: Curve
Length: 31.46' Radius: 160.00'
Delta: 11°16'02" Tangent: 15.78'
Chord: 31.41' Course: S81° 13' 49"E
Course In: S3° 08' 10"W Course Out: N14° 24' 12"E
RP North: 710,739.802' East: 226,184.122'
End North: 710,894.773' East: 226,223.921'

Segment# 3: Curve

Length: 19.20' Radius: 95.00'
Delta: 11°34'49" Tangent: 9.63'
Chord: 19.17' Course: S81° 23' 13"E
Course In: N14° 24' 12"E Course Out: S2° 49' 22"W
RP North: 710,986.787' East: 226,247.552'
End North: 710,891.902' East: 226,242.874'

Segment# 4: Line
Course: S0° 00' 48"W Length: 100.06'
North: 710,791.842' East: 226,242.850'

Segment# 5: Line
Course: N89° 59' 12"W Length: 16.81'
North: 710,791.846' East: 226,226.040'

Segment# 6: Line
Course: N77° 34' 07"W Length: 33.98'
North: 710,799.161' East: 226,192.857'

Perimeter: 301.92' Area: 5,082Sq.Ft.
Error Closure: 0.005 Course: S76° 13' 49"E
Error North : -0.0013 East: 0.0053

Precision 1: 60,382.00

Parcel Name: PLAT - B15 L20
Description: 20
Process segment order counterclockwise: False
Enable mapcheck across chord: False
North:710,791.843' East:226,242.850'

Segment# 1: Line
Course: N0° 00' 48"E Length: 100.06'
North: 710,891.903' East: 226,242.873'

Segment# 2: Curve
Length: 44.20' Radius: 95.00'
Delta: 26°39'23" Tangent: 22.51'
Chord: 43.80' Course: N79° 29' 41"E
Course In: N2° 49' 22"E Course Out: S23° 50' 01"E
RP North: 710,986.788' East: 226,247.552'
End North: 710,899.889' East: 226,285.940'

Segment# 3: Line
Course: S23° 50' 01"E Length: 107.63'
North: 710,801.437' East: 226,329.431'

Segment# 4: Line
Course: S76° 42' 09"W Length: 41.74'
North: 710,791.837' East: 226,288.810'

Segment# 5: Line
Course: N89° 59' 12"W Length: 45.96'
North: 710,791.847' East: 226,242.850'

Perimeter: 339.59' Area: 6,771Sq.Ft.
Error Closure: 0.005 Course: N0° 30' 06"W
Error North : 0.0046 East: 0.0000

Precision 1: 67,918.00

Parcel Name: PLAT - B15 L21
Description: 21
Process segment order counterclockwise: False
Enable mapcheck across chord: False
North:710,801.433' East:226,329.432'

Segment# 1: Line
Course: N23° 50' 01"W Length: 107.63'
North: 710,899.885' East: 226,285.941'

Segment# 2: Curve
Length: 43.56' Radius: 95.00'
Delta: 26°16'23" Tangent: 22.17'
Chord: 43.18' Course: N53° 01' 47"E
Course In: N23° 50' 01"W Course Out: S50° 06' 24"E
RP North: 710,986.783' East: 226,247.553'
End North: 710,925.854' East: 226,320.441'

Segment# 3: Line
Course: S50° 06' 24"E Length: 102.89'
North: 710,859.865' East: 226,399.382'

Segment# 4: Line
Course: S30° 04' 59"W Length: 56.10'
North: 710,811.321' East: 226,371.262'

Segment# 5: Line
Course: S76° 42' 09"W Length: 42.98'
North: 710,801.436' East: 226,329.434'

Perimeter: 353.17' Area: 7,682Sq.Ft.
Error Closure: 0.003 Course: N37° 44' 03"E
Error North : 0.0024 East: 0.0019

Precision 1: 117,720.00

Parcel Name: PLAT - B15 L22
Description: 22
Process segment order counterclockwise: False

Enable mapcheck across chord: False
North:710,859.865' East:226,399.384'

Segment# 1: Line
Course: N50° 06' 24"W Length: 102.89'
North: 710,925.855' East: 226,320.443'

Segment# 2: Curve
Length: 43.56' Radius: 95.00'
Delta: 26°16'23" Tangent: 22.17'
Chord: 43.18' Course: N26° 45' 24"E
Course In: N50° 06' 24"W Course Out: S76° 22' 47"E
RP North: 710,986.784' East: 226,247.555'
End North: 710,964.413' East: 226,339.884'

Segment# 3: Line
Course: S77° 23' 06"E Length: 108.92'
North: 710,940.625' East: 226,446.174'

Segment# 4: Line
Course: S30° 04' 59"W Length: 93.33'
North: 710,859.866' East: 226,399.392'

Perimeter: 348.71' Area: 6,940Sq.Ft.
Error Closure: 0.008 Course: N81° 10' 29"E
Error North : 0.0012 East: 0.0078

Precision 1: 43,587.50

Parcel Name: PLAT - B15 L23
Description: 23
Process segment order counterclockwise: False
Enable mapcheck across chord: False
North:711,010.885' East:226,339.447'

Segment# 1: Line
Course: S89° 59' 12"E Length: 106.30'
North: 711,010.860' East: 226,445.747'

Segment# 2: Line
Course: S0° 20' 44"E Length: 70.23'
North: 710,940.631' East: 226,446.171'

Segment# 3: Line
Course: N77° 23' 06"W Length: 108.92'
North: 710,964.419' East: 226,339.880'

Segment# 4: Curve
Length: 46.42' Radius: 95.00'
Delta: 27°59'44" Tangent: 23.68'

Chord: 45.96' Course: N0° 22' 39"W
Course In: N76° 22' 47"W Course Out: N75° 37' 29"E
RP North: 710,986.790' East: 226,247.552'
End North: 711,010.376' East: 226,339.577'

Segment# 5: Curve
Length: 0.53' Radius: 160.00'
Delta: 0°11'22" Tangent: 0.26'
Chord: 0.53' Course: N14° 16' 50"W
Course In: N75° 37' 29"E Course Out: S75° 48' 51"W
RP North: 711,050.100' East: 226,494.568'
End North: 711,010.889' East: 226,339.447'

Perimeter: 332.40' Area: 6,108Sq.Ft.
Error Closure: 0.004 Course: N4° 56' 38"W
Error North : 0.0042 East: -0.0004

Precision 1: 83,100.00

Parcel Name: PLAT - B15 L24
Description: 24
Process segment order counterclockwise: False
Enable mapcheck across chord: False
North:711,010.860' East:226,445.746'

Segment# 1: Line
Course: N89° 59' 12"W Length: 106.30'
North: 711,010.884' East: 226,339.446'

Segment# 2: Curve
Length: 39.65' Radius: 160.00'
Delta: 14°11'58" Tangent: 19.93'
Chord: 39.55' Course: N7° 05' 10"W
Course In: N75° 48' 51"E Course Out: N89° 59' 12"W
RP North: 711,050.095' East: 226,494.566'
End North: 711,050.133' East: 226,334.566'

Segment# 3: Line
Course: N0° 00' 48"E Length: 10.75'
North: 711,060.883' East: 226,334.569'

Segment# 4: Line
Course: S89° 59' 12"E Length: 110.87'
North: 711,060.857' East: 226,445.439'

Segment# 5: Line
Course: S0° 20' 44"E Length: 50.00'
North: 711,010.858' East: 226,445.741'

Perimeter: 317.58' Area: 5,488Sq.Ft.

Error Closure: 0.005 Course: S67° 14' 11"W
Error North : -0.0021 East: -0.0050

Precision 1: 63,514.00

Parcel Name: PLAT - B15 L25
Description: 25
Process segment order counterclockwise: False
Enable mapcheck across chord: False
North: 711,060.860' East: 226,445.444'

Segment# 1: Line
Course: N89° 59' 12"W Length: 110.87'
North: 711,060.886' East: 226,334.574'

Segment# 2: Line
Course: N0° 00' 48"E Length: 50.00'
North: 711,110.886' East: 226,334.586'

Segment# 3: Line
Course: S89° 59' 12"E Length: 110.56'
North: 711,110.860' East: 226,445.146'

Segment# 4: Line
Course: S0° 20' 44"E Length: 50.00'
North: 711,060.861' East: 226,445.447'

Perimeter: 321.43' Area: 5,536Sq.Ft.
Error Closure: 0.003 Course: N72° 54' 34"E
Error North : 0.0010 East: 0.0032

Precision 1: 107,143.33

Parcel Name: PLAT - B15 L26
Description: 26
Process segment order counterclockwise: False
Enable mapcheck across chord: False
North: 711,110.860' East: 226,445.143'

Segment# 1: Line
Course: N89° 59' 12"W Length: 110.56'
North: 711,110.886' East: 226,334.583'

Segment# 2: Line
Course: N0° 00' 48"E Length: 40.00'
North: 711,150.886' East: 226,334.592'

Segment# 3: Curve
Length: 23.56' Radius: 15.00'
Delta: 90°00'00" Tangent: 15.00'

Chord: 21.21' Course: N45° 00' 48"E
Course In: S89° 59' 12"E Course Out: N0° 00' 48"E
RP North: 711,150.882' East: 226,349.592'
End North: 711,165.882' East: 226,349.595'

Segment# 4: Line
Course: S89° 59' 12"E Length: 95.22'
North: 711,165.860' East: 226,444.815'

Segment# 5: Line
Course: S0° 20' 44"E Length: 55.00'
North: 711,110.861' East: 226,445.147'

Perimeter: 324.34' Area: 6,023Sq.Ft.
Error Closure: 0.005 Course: N76° 32' 54"E
Error North : 0.0011 East: 0.0045

Precision 1: 64,868.00

Parcel Map Check Report

Date: 4/24/2024 9:41:20 AM

Parcel Name: PLAT - ROW

Description:

Process segment order counterclockwise: False

Enable mapcheck across chord: False

North: 711,737.953' East: 225,824.418'

Segment# 1: Line

Course: N89° 08' 12"E Length: 123.45'

North: 711,739.813' East: 225,947.854'

Segment# 2: Curve

Length: 39.04' Radius: 25.00'

Delta: 89°28'53" Tangent: 24.77'

Chord: 35.19' Course: S44° 23' 46"W

Course In: S0° 51' 48"E Course Out: S89° 39' 19"W

RP North: 711,714.816' East: 225,948.231'

End North: 711,714.665' East: 225,923.231'

Segment# 3: Line

Course: S0° 20' 41"E Length: 8.57'

North: 711,706.095' East: 225,923.283'

Segment# 4: Line

Course: S0° 20' 41"E Length: 7.30'

North: 711,698.796' East: 225,923.327'

Segment# 5: Line

Course: S7° 15' 00"W Length: 75.66'

North: 711,623.741' East: 225,913.779'

Segment# 6: Line

Course: S0° 00' 48"W Length: 2.64'

North: 711,621.101' East: 225,913.778'

Segment# 7: Curve

Length: 23.56' Radius: 15.00'

Delta: 90°00'00" Tangent: 15.00'

Chord: 21.21' Course: S44° 59' 12"E

Course In: S89° 59' 12"E Course Out: S0° 00' 48"W

RP North: 711,621.097' East: 225,928.778'

End North: 711,606.097' East: 225,928.775'

Segment# 8: Line

Course: S89° 59' 12"E Length: 49.49'

North: 711,606.086' East: 225,978.265'

Segment# 9: Line

Course: S89° 59' 12"E Length: 50.00'
North: 711,606.074' East: 226,028.265'

Segment# 10: Line
Course: S89° 59' 12"E Length: 50.00'
North: 711,606.062' East: 226,078.265'

Segment# 11: Line
Course: S89° 59' 12"E Length: 50.00'
North: 711,606.051' East: 226,128.265'

Segment# 12: Line
Course: S89° 59' 12"E Length: 50.00'
North: 711,606.039' East: 226,178.265'

Segment# 13: Line
Course: S89° 59' 12"E Length: 6.18'
North: 711,606.038' East: 226,184.445'

Segment# 14: Curve
Length: 40.11' Radius: 160.00'
Delta: 14°21'53" Tangent: 20.16'
Chord: 40.01' Course: N82° 49' 52"E
Course In: N0° 00' 48"E Course Out: S14° 21' 04"E
RP North: 711,766.038' East: 226,184.482'
End North: 711,611.030' East: 226,224.140'

Segment# 15: Curve
Length: 4.24' Radius: 95.00'
Delta: 2°33'16" Tangent: 2.12'
Chord: 4.24' Course: N76° 55' 34"E
Course In: S14° 21' 04"E Course Out: N11° 47' 48"W
RP North: 711,518.995' East: 226,247.687'
End North: 711,611.988' East: 226,228.265'

Segment# 16: Curve
Length: 46.26' Radius: 95.00'
Delta: 27°54'08" Tangent: 23.60'
Chord: 45.81' Course: S87° 50' 44"E
Course In: S11° 47' 48"E Course Out: N16° 06' 20"E
RP North: 711,518.995' East: 226,247.687'
End North: 711,610.266' East: 226,274.041'

Segment# 17: Curve
Length: 21.75' Radius: 95.00'
Delta: 13°07'15" Tangent: 10.93'
Chord: 21.71' Course: S67° 20' 03"E
Course In: S16° 06' 20"W Course Out: N29° 13' 35"E
RP North: 711,518.995' East: 226,247.687'
End North: 711,601.901' East: 226,294.072'

Segment# 18: Curve

Length: 43.56' Radius: 95.00'
Delta: 26°16'23" Tangent: 22.17'
Chord: 43.18' Course: S47° 38' 14"E
Course In: S29° 13' 35"W Course Out: N55° 29' 58"E
RP North: 711,518.995' East: 226,247.687'
End North: 711,572.804' East: 226,325.978'

Segment# 19: Curve

Length: 43.56' Radius: 95.00'
Delta: 26°16'23" Tangent: 22.17'
Chord: 43.18' Course: S21° 21' 51"E
Course In: S55° 29' 58"W Course Out: N81° 46' 21"E
RP North: 711,518.995' East: 226,247.687'
End North: 711,532.590' East: 226,341.709'

Segment# 20: Curve

Length: 37.52' Radius: 95.00'
Delta: 22°37'51" Tangent: 19.01'
Chord: 37.28' Course: S3° 05' 16"W
Course In: S81° 46' 21"W Course Out: S75° 35' 48"E
RP North: 711,518.995' East: 226,247.687'
End North: 711,495.364' East: 226,339.701'

Segment# 21: Curve

Length: 10.73' Radius: 160.00'
Delta: 3°50'31" Tangent: 5.37'
Chord: 10.73' Course: S12° 28' 56"W
Course In: S75° 35' 48"E Course Out: N79° 26' 19"W
RP North: 711,455.565' East: 226,494.672'
End North: 711,484.891' East: 226,337.383'

Segment# 22: Curve

Length: 29.46' Radius: 160.00'
Delta: 10°32'53" Tangent: 14.77'
Chord: 29.41' Course: S5° 17' 15"W
Course In: S79° 26' 19"E Course Out: N89° 59' 12"W
RP North: 711,455.565' East: 226,494.672'
End North: 711,455.602' East: 226,334.672'

Segment# 23: Line

Course: S0° 00' 48"W Length: 20.71'
North: 711,434.892' East: 226,334.667'

Segment# 24: Line

Course: S0° 00' 48"W Length: 50.00'
North: 711,384.892' East: 226,334.656'

Segment# 25: Line

Course: S0° 00' 48"W Length: 50.00'
North: 711,334.892' East: 226,334.644'

Segment# 26: Line
Course: S0° 00' 48"W Length: 50.00'
North: 711,284.892' East: 226,334.632'

Segment# 27: Line
Course: S0° 00' 48"W Length: 40.00'
North: 711,244.892' East: 226,334.623'

Segment# 28: Curve
Length: 23.56' Radius: 15.00'
Delta: 90°00'00" Tangent: 15.00'
Chord: 21.21' Course: S44° 59' 12"E
Course In: S89° 59' 12"E Course Out: S0° 00' 48"W
RP North: 711,244.888' East: 226,349.623'
End North: 711,229.888' East: 226,349.620'

Segment# 29: Line
Course: S89° 59' 12"E Length: 94.81'
North: 711,229.866' East: 226,444.430'

Segment# 30: Line
Course: S89° 59' 12"E Length: 54.03'
North: 711,229.854' East: 226,498.460'

Segment# 31: Line
Course: S0° 20' 41"E Length: 64.00'
North: 711,165.855' East: 226,498.845'

Segment# 32: Line
Course: N89° 59' 12"W Length: 54.03'
North: 711,165.867' East: 226,444.815'

Segment# 33: Line
Course: N89° 59' 12"W Length: 95.22'
North: 711,165.890' East: 226,349.595'

Segment# 34: Curve
Length: 23.56' Radius: 15.00'
Delta: 90°00'00" Tangent: 15.00'
Chord: 21.21' Course: S45° 00' 48"W
Course In: S0° 00' 48"W Course Out: N89° 59' 12"W
RP North: 711,150.890' East: 226,349.591'
End North: 711,150.893' East: 226,334.591'

Segment# 35: Line
Course: S0° 00' 48"W Length: 40.00'
North: 711,110.893' East: 226,334.582'

Segment# 36: Line
Course: S0° 00' 48"W Length: 50.00'
North: 711,060.893' East: 226,334.570'

Segment# 37: Line
Course: S0° 00' 48"W Length: 10.75'
North: 711,050.143' East: 226,334.568'

Segment# 38: Curve
Length: 39.65' Radius: 160.00'
Delta: 14°11'58" Tangent: 19.93'
Chord: 39.55' Course: S7° 05' 10"E
Course In: S89° 59' 12"E Course Out: S75° 48' 51"W
RP North: 711,050.106' East: 226,494.568'
End North: 711,010.895' East: 226,339.447'

Segment# 39: Curve
Length: 0.53' Radius: 160.00'
Delta: 0°11'22" Tangent: 0.26'
Chord: 0.53' Course: S14° 16' 50"E
Course In: N75° 48' 51"E Course Out: S75° 37' 29"W
RP North: 711,050.106' East: 226,494.568'
End North: 711,010.382' East: 226,339.577'

Segment# 40: Curve
Length: 46.42' Radius: 95.00'
Delta: 27°59'44" Tangent: 23.68'
Chord: 45.96' Course: S0° 22' 39"E
Course In: S75° 37' 29"W Course Out: S76° 22' 47"E
RP North: 710,986.796' East: 226,247.552'
End North: 710,964.425' East: 226,339.880'

Segment# 41: Curve
Length: 43.56' Radius: 95.00'
Delta: 26°16'23" Tangent: 22.17'
Chord: 43.18' Course: S26° 45' 24"W
Course In: N76° 22' 47"W Course Out: S50° 06' 24"E
RP North: 710,986.796' East: 226,247.552'
End North: 710,925.867' East: 226,320.439'

Segment# 42: Curve
Length: 43.56' Radius: 95.00'
Delta: 26°16'23" Tangent: 22.17'
Chord: 43.18' Course: S53° 01' 47"W
Course In: N50° 06' 24"W Course Out: S23° 50' 01"E
RP North: 710,986.796' East: 226,247.552'
End North: 710,899.898' East: 226,285.939'

Segment# 43: Curve

Length: 44.20' Radius: 95.00'
Delta: 26°39'23" Tangent: 22.51'
Chord: 43.80' Course: S79° 29' 41"W
Course In: N23° 50' 01"W Course Out: S2° 49' 22"W
RP North: 710,986.796' East: 226,247.552'
End North: 710,891.912' East: 226,242.873'

Segment# 44: Curve
Length: 19.20' Radius: 95.00'
Delta: 11°34'49" Tangent: 9.63'
Chord: 19.17' Course: N81° 23' 13"W
Course In: N2° 49' 22"E Course Out: S14° 24' 12"W
RP North: 710,986.796' East: 226,247.552'
End North: 710,894.782' East: 226,223.921'

Segment# 45: Curve
Length: 31.46' Radius: 160.00'
Delta: 11°16'02" Tangent: 15.78'
Chord: 31.41' Course: N81° 13' 49"W
Course In: S14° 24' 12"W Course Out: N3° 08' 10"E
RP North: 710,739.811' East: 226,184.121'
End North: 710,899.572' East: 226,192.875'

Segment# 46: Curve
Length: 8.72' Radius: 160.00'
Delta: 3°07'21" Tangent: 4.36'
Chord: 8.72' Course: N88° 25' 31"W
Course In: S3° 08' 10"W Course Out: N0° 00' 48"E
RP North: 710,739.811' East: 226,184.121'
End North: 710,899.811' East: 226,184.159'

Segment# 47: Line
Course: N89° 59' 12"W Length: 41.28'
North: 710,899.821' East: 226,142.879'

Segment# 48: Line
Course: N89° 59' 12"W Length: 50.00'
North: 710,899.833' East: 226,092.879'

Segment# 49: Line
Course: N89° 59' 12"W Length: 50.00'
North: 710,899.844' East: 226,042.879'

Segment# 50: Line
Course: N89° 59' 12"W Length: 50.00'
North: 710,899.856' East: 225,992.879'

Segment# 51: Line
Course: N89° 59' 12"W Length: 50.00'
North: 710,899.868' East: 225,942.879'

Segment# 52: Line
Course: N89° 59' 12"W Length: 33.63'
North: 710,899.875' East: 225,909.249'

Segment# 53: Line
Course: N89° 59' 12"W Length: 45.00'
North: 710,899.886' East: 225,864.249'

Segment# 54: Line
Course: N89° 59' 12"W Length: 45.00'
North: 710,899.896' East: 225,819.249'

Segment# 55: Line
Course: N89° 59' 12"W Length: 45.00'
North: 710,899.907' East: 225,774.249'

Segment# 56: Line
Course: N89° 59' 12"W Length: 45.00'
North: 710,899.917' East: 225,729.249'

Segment# 57: Line
Course: N89° 59' 12"W Length: 45.00'
North: 710,899.928' East: 225,684.249'

Segment# 58: Line
Course: N89° 59' 12"W Length: 45.00'
North: 710,899.938' East: 225,639.249'

Segment# 59: Line
Course: N89° 59' 12"W Length: 45.00'
North: 710,899.949' East: 225,594.249'

Segment# 60: Line
Course: N89° 59' 12"W Length: 45.00'
North: 710,899.959' East: 225,549.249'

Segment# 61: Line
Course: N89° 59' 12"W Length: 45.00'
North: 710,899.970' East: 225,504.249'

Segment# 62: Line
Course: N89° 59' 12"W Length: 45.00'
North: 710,899.980' East: 225,459.249'

Segment# 63: Line
Course: N89° 59' 12"W Length: 45.00'
North: 710,899.991' East: 225,414.249'

Segment# 64: Line

Course: N89° 59' 12"W Length: 45.00'
North: 710,900.001' East: 225,369.249'

Segment# 65: Line
Course: N89° 59' 12"W Length: 45.00'
North: 710,900.012' East: 225,324.249'

Segment# 66: Line
Course: N0° 00' 48"E Length: 64.00'
North: 710,964.012' East: 225,324.263'

Segment# 67: Line
Course: S89° 59' 12"E Length: 8.29'
North: 710,964.010' East: 225,332.553'

Segment# 68: Line
Course: S89° 59' 12"E Length: 45.00'
North: 710,963.999' East: 225,377.553'

Segment# 69: Line
Course: S89° 59' 12"E Length: 45.00'
North: 710,963.989' East: 225,422.553'

Segment# 70: Line
Course: S89° 59' 12"E Length: 45.00'
North: 710,963.978' East: 225,467.553'

Segment# 71: Line
Course: S89° 59' 12"E Length: 45.00'
North: 710,963.968' East: 225,512.553'

Segment# 72: Line
Course: S89° 59' 12"E Length: 45.00'
North: 710,963.957' East: 225,557.553'

Segment# 73: Line
Course: S89° 59' 12"E Length: 45.00'
North: 710,963.947' East: 225,602.553'

Segment# 74: Line
Course: S89° 59' 12"E Length: 45.00'
North: 710,963.936' East: 225,647.553'

Segment# 75: Line
Course: S89° 59' 12"E Length: 45.00'
North: 710,963.926' East: 225,692.553'

Segment# 76: Line
Course: S89° 59' 12"E Length: 35.00'
North: 710,963.918' East: 225,727.553'

Segment# 77: Curve
Length: 23.56' Radius: 15.00'
Delta: 90°00'00" Tangent: 15.00'
Chord: 21.21' Course: N45° 00' 48"E
Course In: N0° 00' 48"E Course Out: S89° 59' 12"E
RP North: 710,978.918' East: 225,727.557'
End North: 710,978.914' East: 225,742.557'

Segment# 78: Line
Course: N0° 00' 49"E Length: 85.00'
North: 711,063.914' East: 225,742.577'

Segment# 79: Line
Course: N0° 00' 49"E Length: 85.00'
North: 711,148.914' East: 225,742.597'

Segment# 80: Curve
Length: 23.56' Radius: 15.00'
Delta: 90°00'00" Tangent: 15.00'
Chord: 21.21' Course: N44° 59' 12"W
Course In: N89° 59' 12"W Course Out: N0° 00' 48"E
RP North: 711,148.918' East: 225,727.597'
End North: 711,163.918' East: 225,727.601'

Segment# 81: Line
Course: N89° 59' 12"W Length: 35.00'
North: 711,163.926' East: 225,692.601'

Segment# 82: Line
Course: N89° 59' 12"W Length: 45.00'
North: 711,163.936' East: 225,647.601'

Segment# 83: Line
Course: N89° 59' 12"W Length: 45.00'
North: 711,163.947' East: 225,602.601'

Segment# 84: Line
Course: N89° 59' 12"W Length: 45.00'
North: 711,163.957' East: 225,557.601'

Segment# 85: Line
Course: N89° 59' 12"W Length: 45.00'
North: 711,163.968' East: 225,512.601'

Segment# 86: Line
Course: N89° 59' 12"W Length: 45.00'
North: 711,163.978' East: 225,467.601'

Segment# 87: Line

Course: N89° 59' 12"W Length: 45.00'
North: 711,163.989' East: 225,422.601'

Segment# 88: Line
Course: N89° 59' 12"W Length: 98.29'
North: 711,164.012' East: 225,324.311'

Segment# 89: Line
Course: N0° 00' 48"E Length: 64.00'
North: 711,228.012' East: 225,324.326'

Segment# 90: Line
Course: S89° 59' 12"E Length: 14.29'
North: 711,228.008' East: 225,338.616'

Segment# 91: Line
Course: S89° 59' 12"E Length: 45.00'
North: 711,227.998' East: 225,383.616'

Segment# 92: Line
Course: S89° 59' 12"E Length: 45.00'
North: 711,227.987' East: 225,428.616'

Segment# 93: Line
Course: S89° 59' 12"E Length: 35.00'
North: 711,227.979' East: 225,463.616'

Segment# 94: Curve
Length: 23.56' Radius: 15.00'
Delta: 90°00'00" Tangent: 15.00'
Chord: 21.21' Course: N45° 00' 49"E
Course In: N0° 00' 49"E Course Out: S89° 59' 11"E
RP North: 711,242.979' East: 225,463.619'
End North: 711,242.976' East: 225,478.619'

Segment# 95: Line
Course: N0° 00' 48"E Length: 85.00'
North: 711,327.976' East: 225,478.639'

Segment# 96: Line
Course: N0° 00' 48"E Length: 68.23'
North: 711,396.206' East: 225,478.655'

Segment# 97: Line
Course: N0° 00' 48"E Length: 131.00'
North: 711,527.206' East: 225,478.685'

Segment# 98: Curve
Length: 23.51' Radius: 15.00'
Delta: 89°48'31" Tangent: 14.95'

Chord: 21.18' Course: N44° 53' 26"W
Course In: N89° 59' 10"W Course Out: N0° 12' 18"E
RP North: 711,527.209' East: 225,463.685'
End North: 711,542.209' East: 225,463.739'

Segment# 99: Curve
Length: 20.46' Radius: 15.00'
Delta: 78°09'50" Tangent: 12.18'
Chord: 18.91' Course: S50° 55' 55"W
Course In: S0° 00' 50"W Course Out: N78° 09' 00"W
RP North: 711,527.209' East: 225,463.735'
End North: 711,530.289' East: 225,449.055'

Segment# 100: Curve
Length: 40.92' Radius: 63.00'
Delta: 37°12'43" Tangent: 21.21'
Chord: 40.20' Course: S30° 27' 23"W
Course In: N78° 08' 58"W Course Out: S40° 56' 16"E
RP North: 711,543.227' East: 225,387.398'
End North: 711,495.635' East: 225,428.678'

Segment# 101: Curve
Length: 48.74' Radius: 63.00'
Delta: 44°19'34" Tangent: 25.66'
Chord: 47.53' Course: S71° 13' 31"W
Course In: N40° 56' 16"W Course Out: S3° 23' 18"W
RP North: 711,543.227' East: 225,387.398'
End North: 711,480.337' East: 225,383.674'

Segment# 102: Curve
Length: 51.97' Radius: 63.00'
Delta: 47°15'47" Tangent: 27.57'
Chord: 50.51' Course: N62° 58' 48"W
Course In: N3° 23' 18"E Course Out: S50° 39' 06"W
RP North: 711,543.227' East: 225,387.398'
End North: 711,503.283' East: 225,338.680'

Segment# 103: Curve
Length: 101.90' Radius: 63.00'
Delta: 92°40'36" Tangent: 66.01'
Chord: 91.15' Course: N6° 59' 24"E
Course In: N50° 39' 06"E Course Out: N36° 40' 18"W
RP North: 711,543.227' East: 225,387.398'
End North: 711,593.757' East: 225,349.772'

Segment# 104: Curve
Length: 40.34' Radius: 63.00'
Delta: 36°41'06" Tangent: 20.89'
Chord: 39.65' Course: N71° 40' 15"E
Course In: S36° 40' 18"E Course Out: N0° 00' 48"E

RP North: 711,543.227' East: 225,387.398'
End North: 711,606.227' East: 225,387.413'

Segment# 105: Curve
Length: 0.00' Radius: 78.82'
Delta: 0°00'01" Tangent: 0.00'
Chord: 0.00' Course: S89° 59' 11"E
Course In: S0° 00' 48"W Course Out: N0° 00' 49"E
RP North: 711,527.407' East: 225,387.394'
End North: 711,606.227' East: 225,387.413'

Segment# 106: Line
Course: S89° 59' 12"E Length: 7.36'
North: 711,606.225' East: 225,394.773'

Segment# 107: Line
Course: S89° 59' 12"E Length: 45.00'
North: 711,606.215' East: 225,439.773'

Segment# 108: Line
Course: S89° 59' 12"E Length: 45.00'
North: 711,606.204' East: 225,484.773'

Segment# 109: Line
Course: S89° 59' 12"E Length: 45.00'
North: 711,606.194' East: 225,529.773'

Segment# 110: Line
Course: S89° 59' 12"E Length: 45.00'
North: 711,606.183' East: 225,574.773'

Segment# 111: Line
Course: S89° 59' 12"E Length: 45.00'
North: 711,606.173' East: 225,619.773'

Segment# 112: Line
Course: S89° 59' 12"E Length: 45.00'
North: 711,606.162' East: 225,664.773'

Segment# 113: Line
Course: S89° 59' 12"E Length: 45.00'
North: 711,606.152' East: 225,709.773'

Segment# 114: Line
Course: S89° 59' 12"E Length: 45.00'
North: 711,606.142' East: 225,754.773'

Segment# 115: Line
Course: S89° 59' 12"E Length: 45.00'
North: 711,606.131' East: 225,799.773'

Segment# 116: Line
Course: S89° 59' 12"E Length: 35.00'
North: 711,606.123' East: 225,834.773'

Segment# 117: Curve
Length: 23.56' Radius: 15.00'
Delta: 90°00'00" Tangent: 15.00'
Chord: 21.21' Course: N45° 00' 48"E
Course In: N0° 00' 48"E Course Out: S89° 59' 12"E
RP North: 711,621.123' East: 225,834.776'
End North: 711,621.119' East: 225,849.776'

Segment# 118: Line
Course: N0° 00' 48"E Length: 85.00'
North: 711,706.119' East: 225,849.796'

Segment# 119: Line
Course: N0° 00' 48"E Length: 6.84'
North: 711,712.959' East: 225,849.798'

Segment# 120: Curve
Length: 39.65' Radius: 25.00'
Delta: 90°52'36" Tangent: 25.39'
Chord: 35.62' Course: N45° 25' 30"W
Course In: N89° 59' 12"W Course Out: N0° 51' 48"W
RP North: 711,712.965' East: 225,824.798'
End North: 711,737.962' East: 225,824.421'

Perimeter: 9,257.29' Area: 313,570Sq.Ft.
Error Closure: 0.010 Course: N15° 52' 06"E
Error North : 0.0095 East: 0.0027

Precision 1: 519,999.00

Parcel Map Check Report

Date: 4/24/2024 9:42:07 AM
Parcel Name: PLAT - TRACT A
Description: TRACT A
Process segment order counterclockwise: False
Enable mapcheck across chord: False
North: 711,718.318' East: 225,317.883'

Segment# 1: Line

Course: N89° 08' 12"E Length: 1.27'
North: 711,718.338' East: 225,319.153'

Segment# 2: Curve

Length: 29.86' Radius: 64.50'
Delta: 26°31'31" Tangent: 15.20'
Chord: 29.59' Course: N75° 52' 26"E
Course In: N0° 51' 48"W Course Out: S27° 23' 19"E
RP North: 711,782.830' East: 225,318.181'
End North: 711,725.560' East: 225,347.853'

Segment# 3: Curve

Length: 22.92' Radius: 49.50'
Delta: 26°31'31" Tangent: 11.67'
Chord: 22.71' Course: N75° 52' 26"E
Course In: S27° 23' 19"E Course Out: N0° 51' 48"W
RP North: 711,681.609' East: 225,370.624'
End North: 711,731.103' East: 225,369.878'

Segment# 4: Line

Course: N89° 08' 12"E Length: 454.59'
North: 711,737.953' East: 225,824.416'

Segment# 5: Curve

Length: 39.65' Radius: 25.00'
Delta: 90°52'36" Tangent: 25.39'
Chord: 35.62' Course: S45° 25' 30"E
Course In: S0° 51' 48"E Course Out: S89° 59' 12"E
RP North: 711,712.956' East: 225,824.793'
End North: 711,712.950' East: 225,849.793'

Segment# 6: Line

Course: S0° 00' 48"W Length: 6.84'
North: 711,706.110' East: 225,849.791'

Segment# 7: Line

Course: N89° 59' 12"W Length: 50.00'
North: 711,706.121' East: 225,799.791'

Segment# 8: Line

Course: N89° 59' 12"W Length: 45.00'
North: 711,706.132' East: 225,754.791'

Segment# 9: Line
Course: N89° 59' 12"W Length: 45.00'
North: 711,706.142' East: 225,709.791'

Segment# 10: Line
Course: N89° 59' 12"W Length: 45.00'
North: 711,706.153' East: 225,664.791'

Segment# 11: Line
Course: N89° 59' 12"W Length: 45.00'
North: 711,706.163' East: 225,619.791'

Segment# 12: Line
Course: N89° 59' 12"W Length: 45.00'
North: 711,706.174' East: 225,574.791'

Segment# 13: Line
Course: N89° 59' 12"W Length: 45.00'
North: 711,706.184' East: 225,529.791'

Segment# 14: Line
Course: N89° 59' 12"W Length: 45.00'
North: 711,706.195' East: 225,484.791'

Segment# 15: Line
Course: N89° 59' 12"W Length: 45.00'
North: 711,706.205' East: 225,439.791'

Segment# 16: Line
Course: N89° 59' 12"W Length: 45.00'
North: 711,706.216' East: 225,394.791'

Segment# 17: Line
Course: N89° 59' 12"W Length: 45.00'
North: 711,706.226' East: 225,349.791'

Segment# 18: Line
Course: S0° 00' 48"W Length: 112.48'
North: 711,593.746' East: 225,349.765'

Segment# 19: Curve
Length: 101.90' Radius: 63.00'
Delta: 92°40'36" Tangent: 66.01'
Chord: 91.15' Course: S6° 59' 24"W
Course In: S36° 40' 18"E Course Out: S50° 39' 06"W
RP North: 711,543.216' East: 225,387.391'
End North: 711,503.272' East: 225,338.672'

Segment# 20: Line
 Course: S0° 00' 48"W Length: 107.04'
 North: 711,396.232' East: 225,338.647'

Segment# 21: Line
 Course: S89° 59' 12"E Length: 40.00'
 North: 711,396.222' East: 225,378.647'

Segment# 22: Line
 Course: S0° 00' 48"W Length: 68.23'
 North: 711,327.992' East: 225,378.632'

Segment# 23: Line
 Course: N89° 59' 12"W Length: 40.00'
 North: 711,328.002' East: 225,338.632'

Segment# 24: Line
 Course: S0° 00' 48"W Length: 100.00'
 North: 711,228.002' East: 225,338.608'

Segment# 25: Line
 Course: N89° 59' 12"W Length: 14.29'
 North: 711,228.005' East: 225,324.318'

Segment# 26: Curve
 Length: 31.42' Radius: 20.00'
 Delta: 90°00'00" Tangent: 20.00'
 Chord: 28.28' Course: N44° 59' 12"W
 Course In: N0° 00' 48"E Course Out: N89° 59' 12"W
 RP North: 711,248.005' East: 225,324.323'
 End North: 711,248.010' East: 225,304.323'

Segment# 27: Line
 Course: N0° 00' 48"E Length: 243.88'
 North: 711,491.890' East: 225,304.380'

Segment# 28: Line
 Course: N4° 46' 38"E Length: 120.42'
 North: 711,611.891' East: 225,314.408'

Segment# 29: Line
 Course: N0° 00' 48"E Length: 93.77'
 North: 711,705.661' East: 225,314.430'

Segment# 30: Curve
 Length: 13.29' Radius: 25.00'
 Delta: 30°27'20" Tangent: 6.81'
 Chord: 13.13' Course: N15° 14' 28"E
 Course In: S89° 59' 12"E Course Out: N59° 31' 52"W

RP North: 711,705.655' East: 225,339.430'
End North: 711,718.332' East: 225,317.883'

Perimeter: 2,141.84' Area: 32,548Sq.Ft.
Error Closure: 0.014 Course: N1° 32' 05"W
Error North : 0.0137 East: -0.0004

Precision 1: 152,989.29

Parcel Name: PLAT - TRACT B

Description:

Process segment order counterclockwise: False

Enable mapcheck across chord: False

North:711,739.813' East:225,947.850'

Segment# 1: Line

Course: N89° 08' 12"E Length: 493.51'
North: 711,747.249' East: 226,441.304'

Segment# 2: Line

Course: S0° 20' 44"E Length: 157.08'
North: 711,590.172' East: 226,442.251'

Segment# 3: Line

Course: N39° 50' 34"W Length: 51.77'
North: 711,629.921' East: 226,409.083'

Segment# 4: Line

Course: N39° 50' 34"W Length: 54.25'
North: 711,671.574' East: 226,374.326'

Segment# 5: Line

Course: N60° 46' 25"W Length: 36.02'
North: 711,689.162' East: 226,342.892'

Segment# 6: Line

Course: S29° 13' 35"W Length: 100.00'
North: 711,601.892' East: 226,294.066'

Segment# 7: Curve

Length: 21.75' Radius: 95.00'
Delta: 13°07'15" Tangent: 10.93'
Chord: 21.71' Course: N67° 20' 03"W
Course In: S29° 13' 35"W Course Out: N16° 06' 20"E
RP North: 711,518.986' East: 226,247.681'
End North: 711,610.257' East: 226,274.034'

Segment# 8: Line

Course: N16° 06' 20"E Length: 100.00'
North: 711,706.332' East: 226,301.775'

Segment# 9: Line
 Course: N73° 53' 40"W Length: 36.89'
 North: 711,716.566' East: 226,266.333'

Segment# 10: Line
 Course: S84° 40' 39"W Length: 38.21'
 North: 711,713.021' East: 226,228.288'

Segment# 11: Line
 Course: S84° 40' 39"W Length: 50.22'
 North: 711,708.363' East: 226,178.284'

Segment# 12: Line
 Course: S84° 40' 39"W Length: 25.11'
 North: 711,706.034' East: 226,153.283'

Segment# 13: Line
 Course: N89° 59' 12"W Length: 25.00'
 North: 711,706.040' East: 226,128.283'

Segment# 14: Line
 Course: N89° 59' 12"W Length: 50.00'
 North: 711,706.051' East: 226,078.283'

Segment# 15: Line
 Course: N89° 59' 12"W Length: 50.00'
 North: 711,706.063' East: 226,028.283'

Segment# 16: Line
 Course: N89° 59' 12"W Length: 50.00'
 North: 711,706.074' East: 225,978.283'

Segment# 17: Line
 Course: N89° 59' 12"W Length: 55.00'
 North: 711,706.087' East: 225,923.283'

Segment# 18: Line
 Course: N0° 20' 41"W Length: 8.57'
 North: 711,714.657' East: 225,923.231'

Segment# 19: Curve
 Length: 39.04' Radius: 25.00'
 Delta: 89°28'53" Tangent: 24.77'
 Chord: 35.19' Course: N44° 23' 46"E
 Course In: N89° 39' 19"E Course Out: N0° 51' 48"W
 RP North: 711,714.807' East: 225,948.231'
 End North: 711,739.805' East: 225,947.854'

Perimeter: 1,442.44' Area: 27,905Sq.Ft.

Error Closure: 0.009 Course: S24° 33' 15"E
Error North : -0.0082 East: 0.0038

Precision 1: 160,268.89

Parcel Name: PLAT - TRACT C

Description:

Process segment order counterclockwise: False

Enable mapcheck across chord: False

North: 710,964.003' East: 225,324.256'

Segment# 1: Curve

Length: 31.42' Radius: 20.00'

Delta: 89°59'59" Tangent: 20.00'

Chord: 28.28' Course: N44° 59' 07"W

Course In: N0° 00' 53"E Course Out: N89° 59' 08"W

RP North: 710,984.003' East: 225,324.261'

End North: 710,984.008' East: 225,304.261'

Segment# 2: Line

Course: N0° 00' 48"E Length: 160.00'

North: 711,144.008' East: 225,304.298'

Segment# 3: Curve

Length: 31.42' Radius: 20.00'

Delta: 90°00'00" Tangent: 20.00'

Chord: 28.28' Course: N45° 00' 48"E

Course In: S89° 59' 12"E Course Out: N0° 00' 48"E

RP North: 711,144.003' East: 225,324.298'

End North: 711,164.003' East: 225,324.303'

Segment# 4: Line

Course: S89° 59' 12"E Length: 98.29'

North: 711,163.981' East: 225,422.593'

Segment# 5: Line

Course: S0° 00' 48"W Length: 100.00'

North: 711,063.981' East: 225,422.570'

Segment# 6: Line

Course: N89° 59' 12"W Length: 45.00'

North: 711,063.991' East: 225,377.570'

Segment# 7: Line

Course: N89° 59' 12"W Length: 45.00'

North: 711,064.002' East: 225,332.570'

Segment# 8: Line

Course: S0° 00' 48"W Length: 100.00'

North: 710,964.002' East: 225,332.547'

Segment# 9: Line
Course: N89° 59' 12"W Length: 8.29'
North: 710,964.003' East: 225,324.257'

Perimeter: 619.41' Area: 14,487Sq.Ft.
Error Closure: 0.001 Course: N51° 21' 15"E
Error North : 0.0004 East: 0.0005

Precision 1: 619,420.00

Parcel Name: PLAT - TRACT D
Description:
Process segment order counterclockwise: False
Enable mapcheck across chord: False
North:711,518.843' East:226,006.678'

Segment# 1: Line
Course: N89° 59' 12"W Length: 100.00'
North: 711,518.866' East: 225,906.678'

Segment# 2: Line
Course: N0° 00' 48"E Length: 23.23'
North: 711,542.096' East: 225,906.683'

Segment# 3: Line
Course: S89° 59' 12"E Length: 85.00'
North: 711,542.076' East: 225,991.683'

Segment# 4: Curve
Length: 23.56' Radius: 15.00'
Delta: 90°00'00" Tangent: 15.00'
Chord: 21.22' Course: S44° 59' 34"E
Course In: S0° 00' 26"W Course Out: S89° 59' 34"E
RP North: 711,527.076' East: 225,991.681'
End North: 711,527.074' East: 226,006.681'

Segment# 5: Line
Course: S0° 00' 48"W Length: 8.23'
North: 711,518.844' East: 226,006.680'

Perimeter: 240.02' Area: 2,275Sq.Ft.
Error Closure: 0.002 Course: N45° 00' 37"E
Error North : 0.0016 East: 0.0016

Precision 1: 120,010.00

Parcel Name: PLAT - TRACT E
Description:
Process segment order counterclockwise: False

Enable mapcheck across chord: False
North:711,542.055' East:226,085.683'

Segment# 1: Line
Course: S89° 59' 12"E Length: 162.00'
North: 711,542.017' East: 226,247.683'

Segment# 2: Line
Course: S89° 59' 07"E Length: 0.00'
North: 711,542.017' East: 226,247.683'

Segment# 3: Curve
Length: 36.13' Radius: 23.00'
Delta: 89°59'38" Tangent: 23.00'
Chord: 32.53' Course: S44° 59' 00"E
Course In: S0° 01' 11"W Course Out: S89° 59' 12"E
RP North: 711,519.017' East: 226,247.675'
End North: 711,519.012' East: 226,270.675'

Segment# 4: Line
Course: N89° 59' 12"W Length: 100.00'
North: 711,519.035' East: 226,170.675'

Segment# 5: Line
Course: N89° 59' 12"W Length: 100.00'
North: 711,519.058' East: 226,070.675'

Segment# 6: Line
Course: N0° 00' 48"E Length: 8.00'
North: 711,527.058' East: 226,070.677'

Segment# 7: Curve
Length: 23.56' Radius: 15.00'
Delta: 90°00'00" Tangent: 15.00'
Chord: 21.21' Course: N45° 00' 48"E
Course In: S89° 59' 12"E Course Out: N0° 00' 48"E
RP North: 711,527.055' East: 226,085.677'
End North: 711,542.055' East: 226,085.681'

Perimeter: 429.69' Area: 4,438Sq.Ft.
Error Closure: 0.003 Course: N89° 59' 00"W
Error North : 0.0000 East: -0.0026

Precision 1: 143,230.00

Parcel Name: PLAT - TRACT F
Description:
Process segment order counterclockwise: False
Enable mapcheck across chord: False
North:710,900.003' East:225,324.241'

Segment# 1: Line
Course: S0° 00' 48"W Length: 100.00'
North: 710,800.003' East: 225,324.218'

Segment# 2: Line
Course: N89° 59' 12"W Length: 20.00'
North: 710,800.008' East: 225,304.218'

Segment# 3: Line
Course: N0° 00' 48"E Length: 80.00'
North: 710,880.008' East: 225,304.237'

Segment# 4: Curve
Length: 31.42' Radius: 20.00'
Delta: 90°00'00" Tangent: 20.00'
Chord: 28.28' Course: N45° 00' 48"E
Course In: S89° 59' 12"E Course Out: N0° 00' 48"E
RP North: 710,880.003' East: 225,324.237'
End North: 710,900.003' East: 225,324.241'

Perimeter: 231.42' Area: 1,914Sq.Ft.
Error Closure: 0.000 Course: N0° 00' 00"E
Error North : 0.0000 East: 0.0000

Precision 1: 231,420,000.00

Parcel Name: PLAT - TRACT G
Description:
Process segment order counterclockwise: False
Enable mapcheck across chord: False
North:710,799.866' East:225,909.218'

Segment# 1: Line
Course: N0° 00' 48"E Length: 100.00'
North: 710,899.866' East: 225,909.241'

Segment# 2: Line
Course: S89° 59' 12"E Length: 33.63'
North: 710,899.858' East: 225,942.871'

Segment# 3: Line
Course: S0° 00' 48"W Length: 100.00'
North: 710,799.858' East: 225,942.848'

Segment# 4: Line
Course: N89° 59' 12"W Length: 33.63'
North: 710,799.866' East: 225,909.218'

Perimeter: 267.27' Area: 3,363Sq.Ft.

Error Closure: 0.000 Course: N0° 00' 00"E
Error North : 0.0000 East: 0.0000

Precision 1: 267,260,000.00

Parcel Name: PLAT - TRACT H

Description:

Process segment order counterclockwise: False

Enable mapcheck across chord: False

North: 710,940.628' East: 226,446.169'

Segment# 1: Line

Course: S0° 20' 44"E Length: 128.89'

North: 710,811.740' East: 226,446.946'

Segment# 2: Line

Course: S89° 40' 56"W Length: 75.68'

North: 710,811.320' East: 226,371.267'

Segment# 3: Line

Course: N30° 04' 59"E Length: 56.10'

North: 710,859.864' East: 226,399.388'

Segment# 4: Line

Course: N30° 04' 59"E Length: 93.33'

North: 710,940.622' East: 226,446.170'

Perimeter: 354.01' Area: 4,878Sq.Ft.

Error Closure: 0.006 Course: S10° 12' 11"E

Error North : -0.0057 East: 0.0010

Precision 1: 59,000.00