

COLORADO LAND SURVEY MONUMENT RECORD

REPORT ONE MONUMENT ONLY ON THIS FORM
REPRODUCTION OF THIS FORM IS AUTHORIZED

008364

All items to be filled in by the Land Surveyor using permanent black lettering and lines which can be reproduced. (Except)*

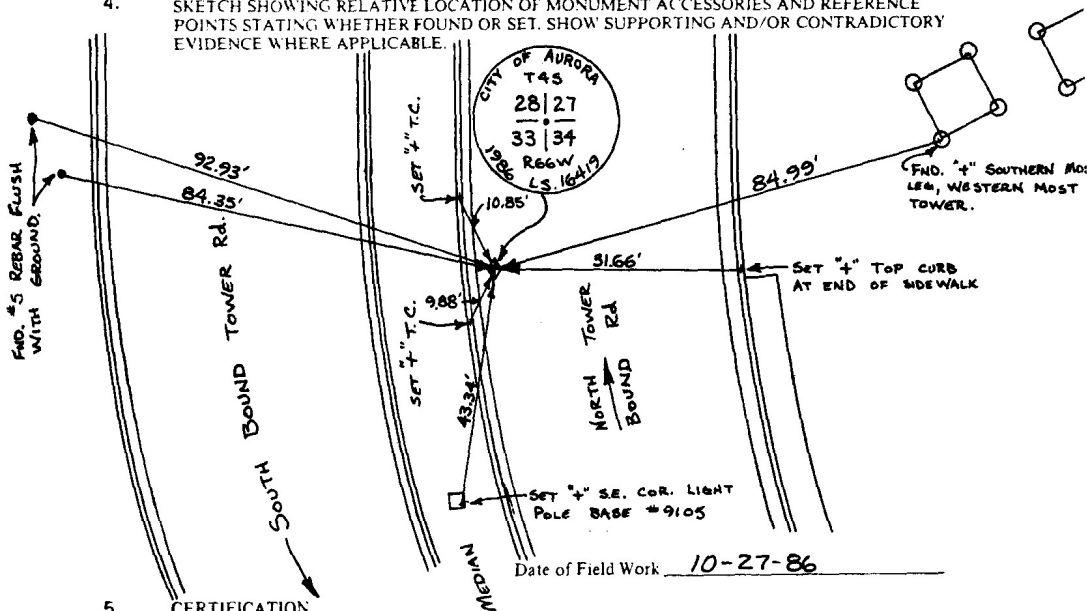
1. TYPE OF MONUMENT ☒ Section Corner ☐ Bench mark
(Check one) ☐ Quarter Corner ☐ Other _____

2. DESCRIPTION OF MONUMENT FOUND.

FOUND P.K. NAIL IN ASPHALT ROADWAY.

3. DESCRIPTION OF MONUMENT AND/OR ACCESSORIES ESTABLISHED BY YOU TO PERPETUATE THE LOCATION OF THIS POINT. IF AN EXISTING MONUMENT, TELL WHY YOU ACCEPTED IT AS VALID. IF YOU ESTABLISHED OR RESTORED A PUBLIC LAND SURVEY MONUMENT, DESCRIBE PROCEDURE AND CONTROL USED. SET 30" PIPE WITH 3" BRASS CAP IN CITY OF AURORA RANGE BOX FLUSH WITH ASPHALT. CORNER REFERENCED BY BR+ E ENG. PRIOR TO CONSTRUCTION OF ROADWAY. ABOVE TIES IN AGREEMENT WITH CITY TIES. ADDED THREE TIES ON TOP OF CURB.

4. SKETCH SHOWING RELATIVE LOCATION OF MONUMENT ACCESSORIES AND REFERENCE POINTS STATING WHETHER FOUND OR SET. SHOW SUPPORTING AND/OR CONTRADICTIONARY EVIDENCE WHERE APPLICABLE.

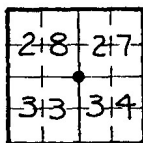


5. CERTIFICATION
This is to certify that I was in responsible charge of the surveying work described in this record and that to the best of my knowledge the information presented herein is true and correct.

Date October 31, 1986

Signature Kenneth A. Rice

6. LOCATION DIAGRAM
1" = 1 Mile



• = Location of Monument



Surveyor's Seal

RECEIVED FEB 03 1987

*(Do not fill in)

Accepted for Filing

State Board of Registration for Professional Engineers and Land Surveyors:

By Jody Swante

Date FEB 13 1987

RECEIVED AT OFFICE OF THE COUNTY CLERK;

_____ COUNTY

By _____

Date _____

Record to be filed by Index Reference Number, numerically, then alphabetically, under appropriate Township, Range, and Meridian.

7. COUNTY ARAP INDEX REF. NO. 13-E

COUNTY _____ INDEX REF. NO. _____

8. SEC. 28, T 4S, R 66W, 6TH P.M.