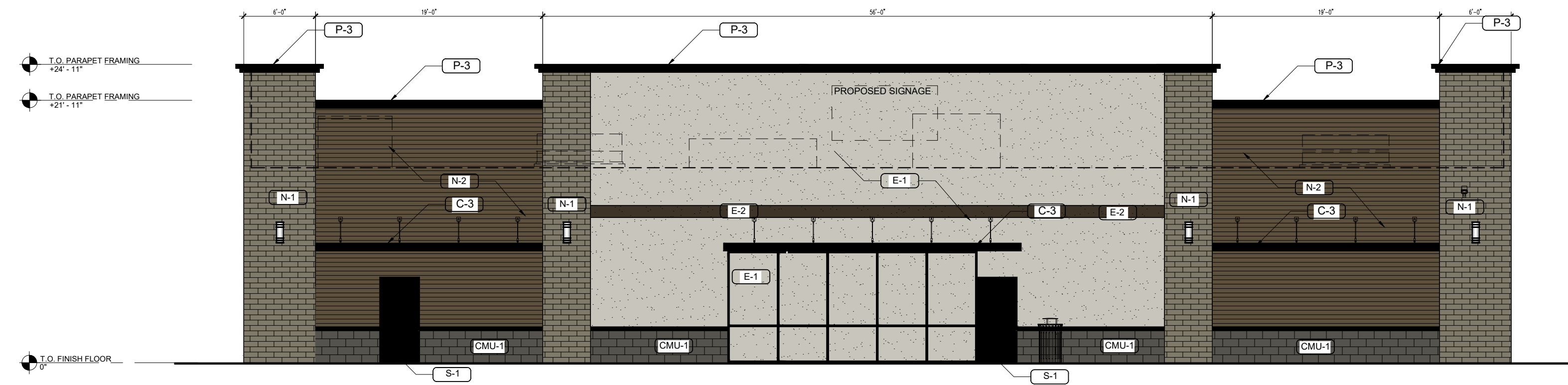
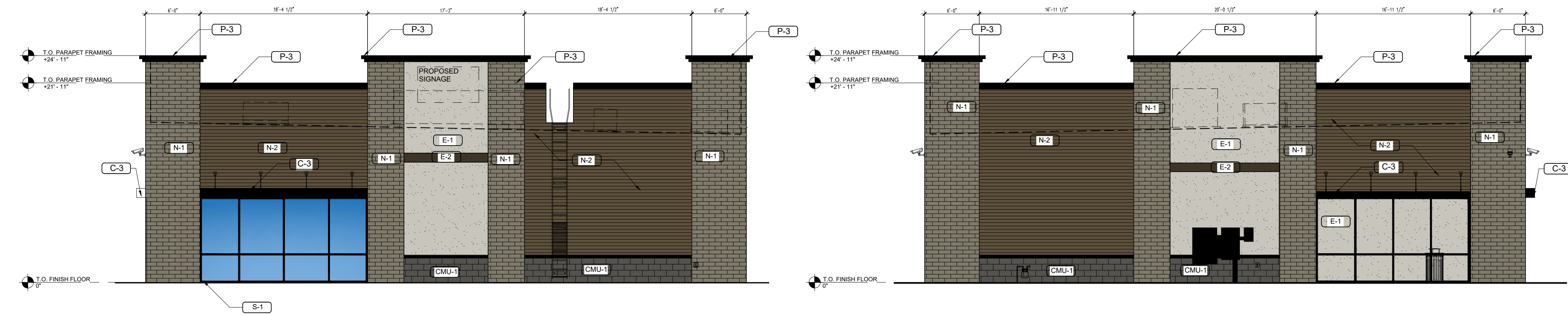


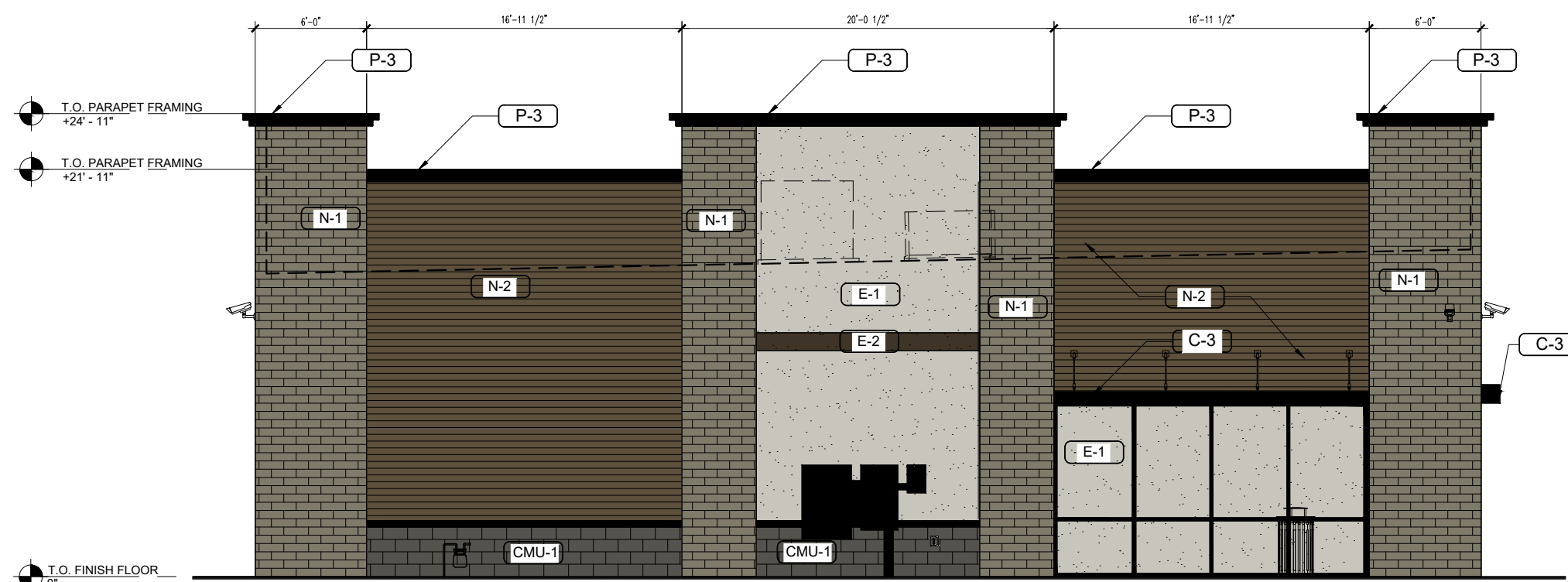
1 ELEVATION - SOUTH  
1/8" = 1'-0"



3 ELEVATION - NORTH  
1/8" = 1'-0"



2 ELEVATION - EAST  
1/8" = 1'-0"



4 ELEVATION - WEST  
1/8" = 1'-0"

| EXTERIOR MATERIALS SCHEDULE<br>(NOT ALL MATERIALS IN SCHEDULE ARE USED) |                                      |   |
|---|--------------------------------------|---|
| N.O.  | MATERIAL                             | MANUF.-COLOR  |
| N-1   | HANDCRAFTED VENEER STONE             | STONE STYLER - PA MASONRY   |
| N-2   | FIBERON COMPOSITE WOOD PANELING      | FIBERON - MORA  |
| CMU-1   | SPLIT-FACE CONCRETE MASONRY UNIT     | BASALITE - SPLIT FACE - EBONY   |
| E-1   | THREE COAT STUCCO SYSTEM - STAINLESS | THREE COAT STUCCO SYSTEM - STAINLESS  |
| E-2   | THREE COAT STUCCO SYSTEM             | THREE COAT STUCCO SYSTEM - FLINT  |
| S-1   | ALUMINUM STOREFRONT GLAZING          | METAL ACCENTS - SW 7675 'SEAL SKIN'   |
| P-3   | PREFINISHED PARAPET CAP              | 20 GA. PREFINISHED METAL CAP- DARK BRONZE                                   |
| C-1   | PREFINISHED ALUMINUM CANOPY          | MAPES LUMISHADE CANOPY - ALUMINUM - BAKED ENAMEL W/ REAR GUTTER CONNECTIONS |
| C-2   | FUELING CANOPY                       | 20 GA. PREFINISHED METAL - DARK BRONZE                                      |

| Table 4.8-8<br>Façade Character Elements for Four-Sided Building Design |   |                  |              |  |
|---|---|------------------|--------------|--|
| BUILDING FACE   | Mixed-Use and Multifamily Residential Districts |                  |              |  |
|   | PRIMARY FAÇADE                                  | SECONDARY FAÇADE | MINOR FAÇADE |  |
| <b>Massing</b>  |   |                  |              |  |
| General   | 3   | 2                | 1            |  |
| Wall off-set (min. 3 ft.)   | x   | x                | x            |  |
| Wall/parapet height change (min. 3 ft.)                                 | x   | x                | x            |  |
| Roof form change  |   |                  |              |  |
| Upper floor stepback  |   |                  |              |  |
| Wall notch (min. 12 in.)  | x   | x                | x            |  |
| <b>Materials</b>  |   |                  |              |  |
| General   | 2   | 2                | 1            |  |
| Change in material  | x   | x                | x            |  |
| Change in color   | x   | x                | x            |  |
| Change in texture   | x   | x                | x            |  |
| Use of masonry (min. 40% of façade)                                     |   |                  |              |  |
| Use of panelized materials (min. 40% of façade)                         |   |                  |              |  |
| Variety of window sizes   |   |                  |              |  |
| Transparency and glazing (min 70% transparent glass)                    |   |                  |              |  |
| <b>Human Scale</b>  |   |                  |              |  |
| General   | 3   | 2                | 1            |  |
| Architectural detailing   | x   | x                | x            |  |
| Display cases on ground floor (for mixed-use)                           |   |                  |              |  |
| Building-mounted lighting fixtures                                      | x   | x                | x            |  |
| Awnings or shutters   | x   | x                | x            |  |
| Entry definition (pronounced massing/roof form, stoop, porch, etc.)     | x   | x                | x            |  |
| Building corner enhancements  | x   | x                | x            |  |
| Wall art  |   |                  |              |  |
| Balconies   |   |                  |              |  |
| Landscape wall/decorative screen for vines                              |   |                  |              |  |

